

8 7 6 5 4 3 2 1

D

D

C

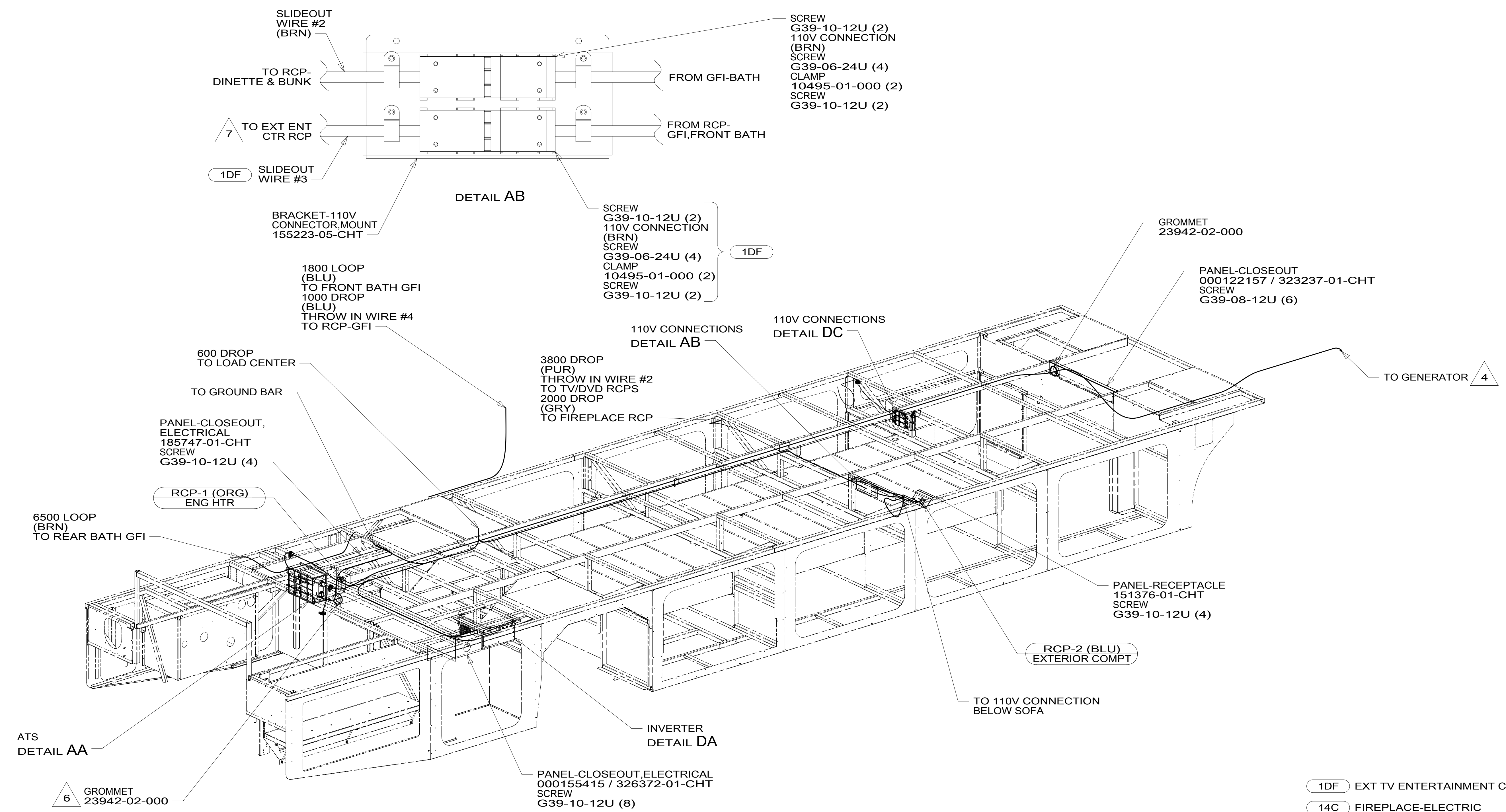
C

B

B

A

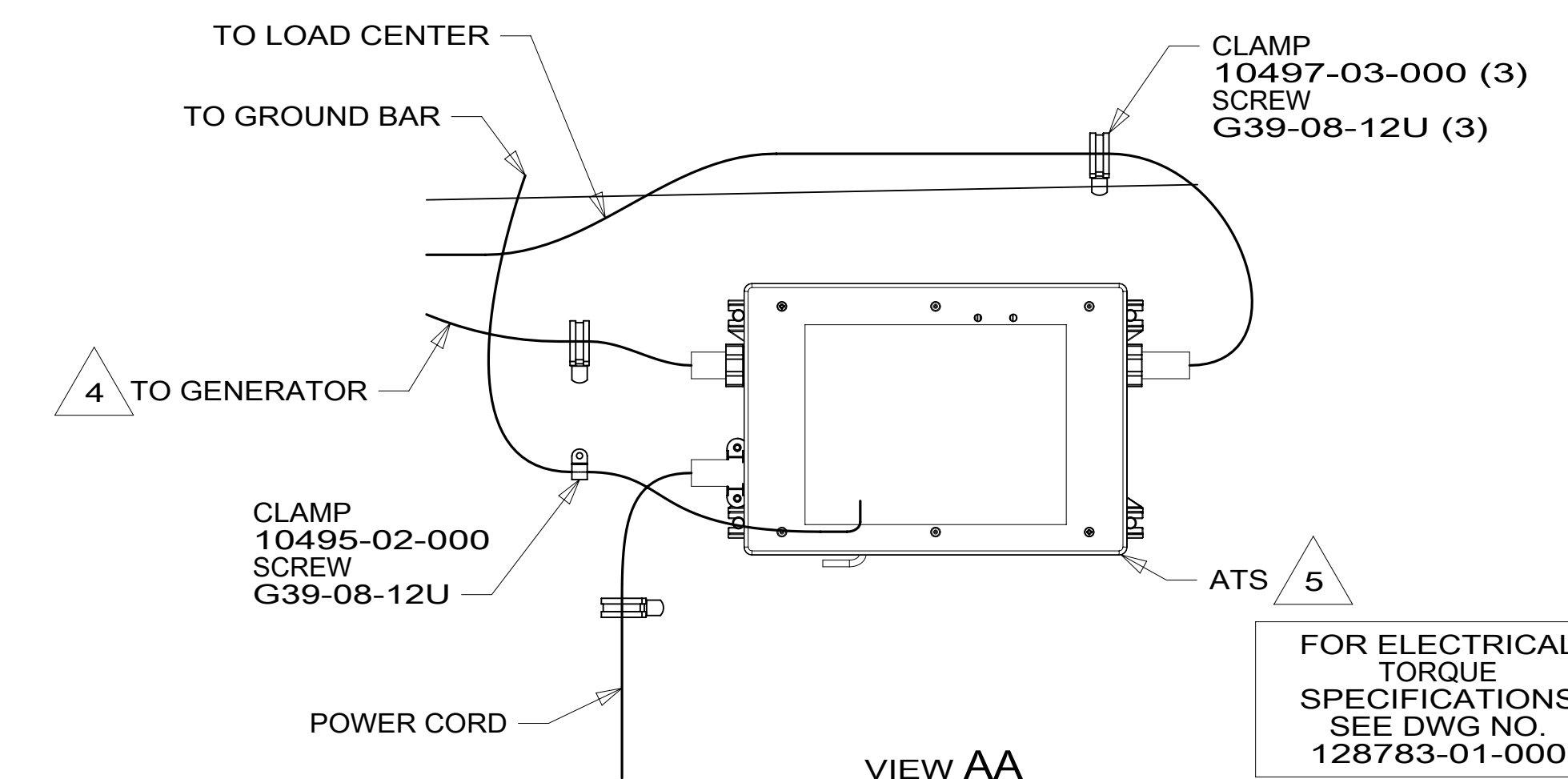
A



- 1DF EXT TV ENTERTAINMENT CENTER
- 14C FIREPLACE-ELECTRIC
- 78J ELECTRICAL SYSTEM-50 AMP
- 265 CODES/STANDARDS-CSA/CMVSS
- 1B1 CODES/STANDARDS USA

<small>COPYRIGHT 2016 WINNEBAGO INDUSTRIES, INC.</small>	
DSNR:	ALL DIMENSIONS ARE IN MILLIMETERS
DFFR:	
UNSPECIFIED TOLERANCES:	MATERIAL:
WHOLE DIM (X) : 3	
ONE-PLACE (X.X) : 1.5	
TWO-PLACE (X.XX) : 0.50	
ANGLE : 1°	
REFER TO ES0018 FOR FASTENER TIGHTENING GUIDELINES	WEIGHT: (LBS) FIRST USED: 17 L38W
DESCRIPTION: WIRING INSTL-BODY, 110V	
SHEET: 1 OF 5	ITEM/PART NO: 000211500 / 30128501000
REF:	1 02-Apr-2018

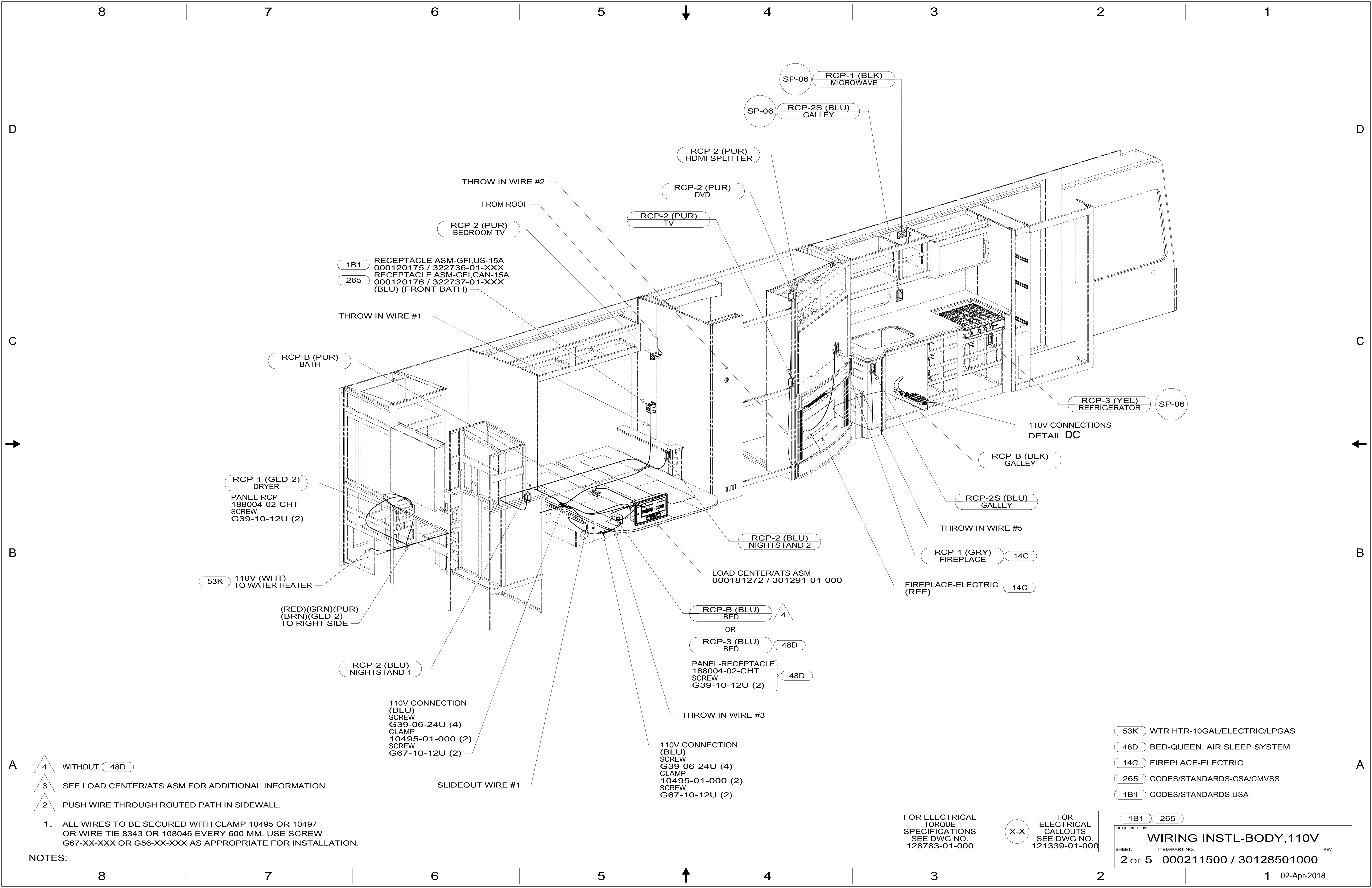
- NOTES:
1. ALL WIRES TO BE SECURED WITH CLAMP 10495 OR 10497 OR WIRE TIE 8343 OR 108046 EVERY 600 MM. USE SCREW G67-XX-XXX OR G56-XX-XXX AS APPROPRIATE FOR INSTALLATION.
 2. CLAMP TO FLOOR SUPPORT TUBES AS NECESSARY WITH CLAMP 10497-01-000.
 3. WIRES THAT REST ON WIRE TRAYS ARE TO BE TIED DOWN WITH WIRE TIE 8343-04-000.
 4. SEE GENERATOR INSTL FOR ADDITIONAL INFORMATION.
 5. SEE LOAD CENTER/ATS ASM FOR ADDITIONAL INFORMATION.
 6. ROUTE ENGINE HEATER POWER CORD THROUGH GROMMET.
 7. WIRE IN SIDEWALL.



FOR ELECTRICAL TORQUE SPECIFICATIONS SEE DWG NO. 128783-01-000

FOR ELECTRICAL CALLOUTS SEE DWG NO. 121339-01-000

8 7 6 5 4 3 2 1



1B1 RECEPTACLE ASM-GFI,US-15A
000120175 / 322736-01-XXX
265 RECEPTACLE ASM-GFI,CAN-15A
000120176 / 322737-01-XXX
(BLU) (FRONT BATH)

RCP-1 (GLD-2) DRYER
PANEL-RCP
188004-02-CHT
SCREW
G39-10-12U (2)

53K 110V (WHT)
TO WATER HEATER

(RED)(GRN)(PUR)
(BRN)(GLD-2)
TO RIGHT SIDE

RCP-2 (BLU)
NIGHTSTAND 1

110V CONNECTION
(BLU)
SCREW
G39-06-24U (4)
CLAMP
10495-01-000 (2)
SCREW
G67-10-12U (2)

110V CONNECTION
(BLU)
SCREW
G39-06-24U (4)
CLAMP
10495-01-000 (2)
SCREW
G67-10-12U (2)

LOAD CENTER/ATS ASM
000181272 / 301291-01-000

RCP-B (BLU) BED 4

OR
RCP-3 (BLU) BED 48D

PANEL-RECEPTACLE
188004-02-CHT
SCREW
G39-10-12U (2) 48D

THROW IN WIRE #3

RCP-2 (BLU)
NIGHTSTAND 2

RCP-1 (GRY) FIREPLACE 14C

FIREPLACE-ELECTRIC (REF) 14C

RCP-2S (BLU) GALLEY

RCP-B (BLK) GALLEY

110V CONNECTIONS
DETAIL DC

RCP-3 (YEL) REFRIGERATOR SP-06

SP-06 RCP-2S (BLU) GALLEY

SP-06 RCP-1 (BLK) MICROWAVE

RCP-2 (PUR) HDMI SPLITTER

RCP-2 (PUR) DVD

RCP-2 (PUR) TV

RCP-2 (PUR) BEDROOM TV

THROW IN WIRE #2

FROM ROOF

THROW IN WIRE #1

RCP-B (PUR) BATH

SLIDEOUT WIRE #1

4 WITHOUT 48D

3 SEE LOAD CENTER/ATS ASM FOR ADDITIONAL INFORMATION.

2 PUSH WIRE THROUGH ROUTED PATH IN SIDEWALL.

1. ALL WIRES TO BE SECURED WITH CLAMP 10495 OR 10497 OR WIRE TIE 8343 OR 108046 EVERY 600 MM. USE SCREW G67-XX-XXX OR G56-XX-XXX AS APPROPRIATE FOR INSTALLATION.

FOR ELECTRICAL TORQUE SPECIFICATIONS SEE DWG NO. 128783-01-000

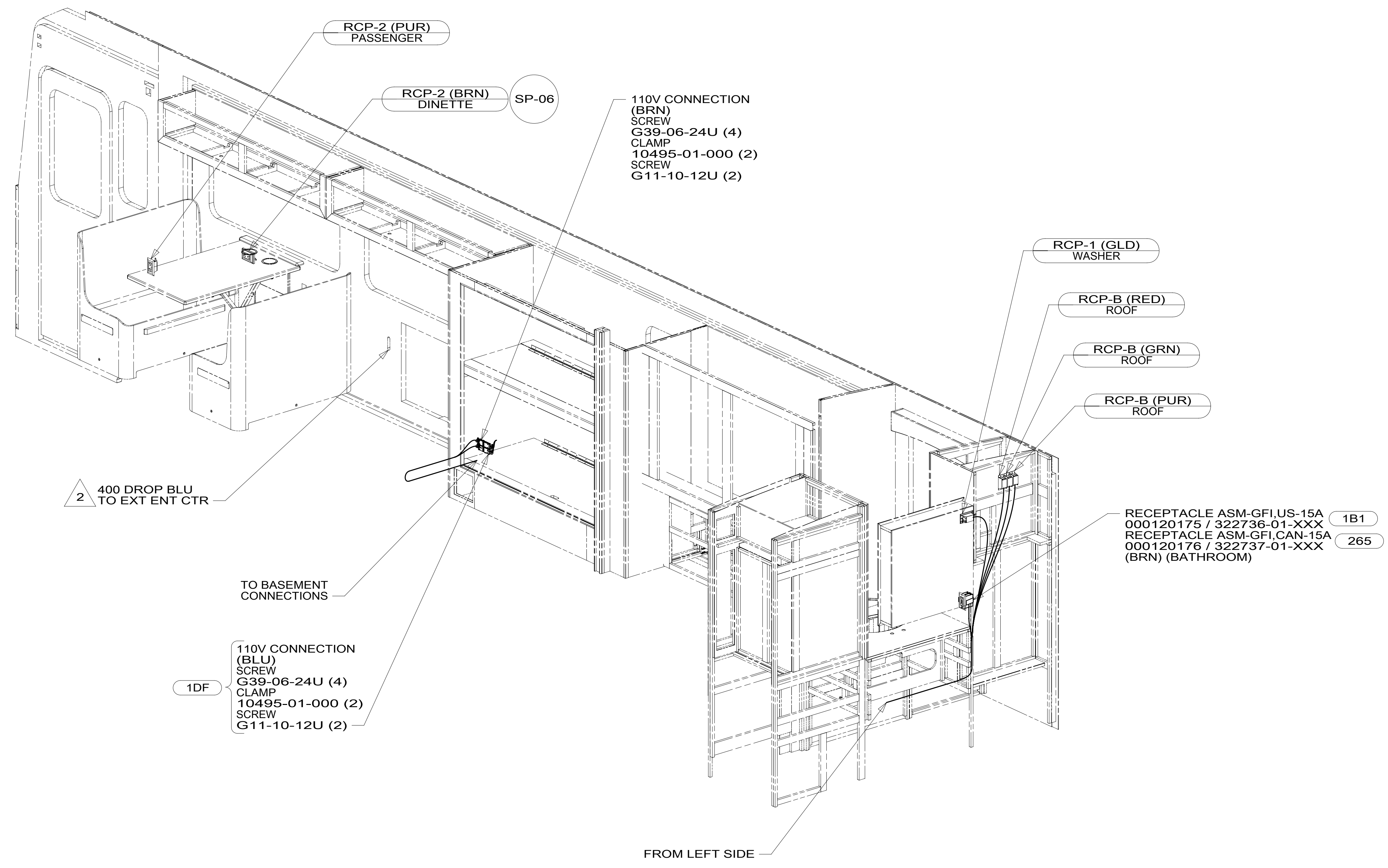
FOR ELECTRICAL CALLOUTS SEE DWG NO. 121339-01-000

- 53K WTR HTR-10GAL/ELECTRIC/LPGAS
- 48D BED-QUEEN, AIR SLEEP SYSTEM
- 14C FIREPLACE-ELECTRIC
- 265 CODES/STANDARDS-CSA/CMVSS
- 1B1 CODES/STANDARDS USA

DESCRIPTION:		1B1 265	
WIRING INSTL-BODY, 110V			
SHEET:	ITEM/PART NO.:	REV:	
2 OF 5	000211500 / 30128501000		

8 7 6 5 4 3 2 1

D
C
B
A



2 SEE ENTERTAINMENT CTR COMPL-TV FOR ADDITIONAL INFORMATION.

1. ALL WIRES TO BE SECURED WITH CLAMP 10495 OR 10497 OR WIRE TIE 8343 OR 108046 EVERY 600 MM. USE SCREW G67-XX-XXX OR G56-XX-XXX AS APPROPRIATE FOR INSTALLATION.

NOTES:

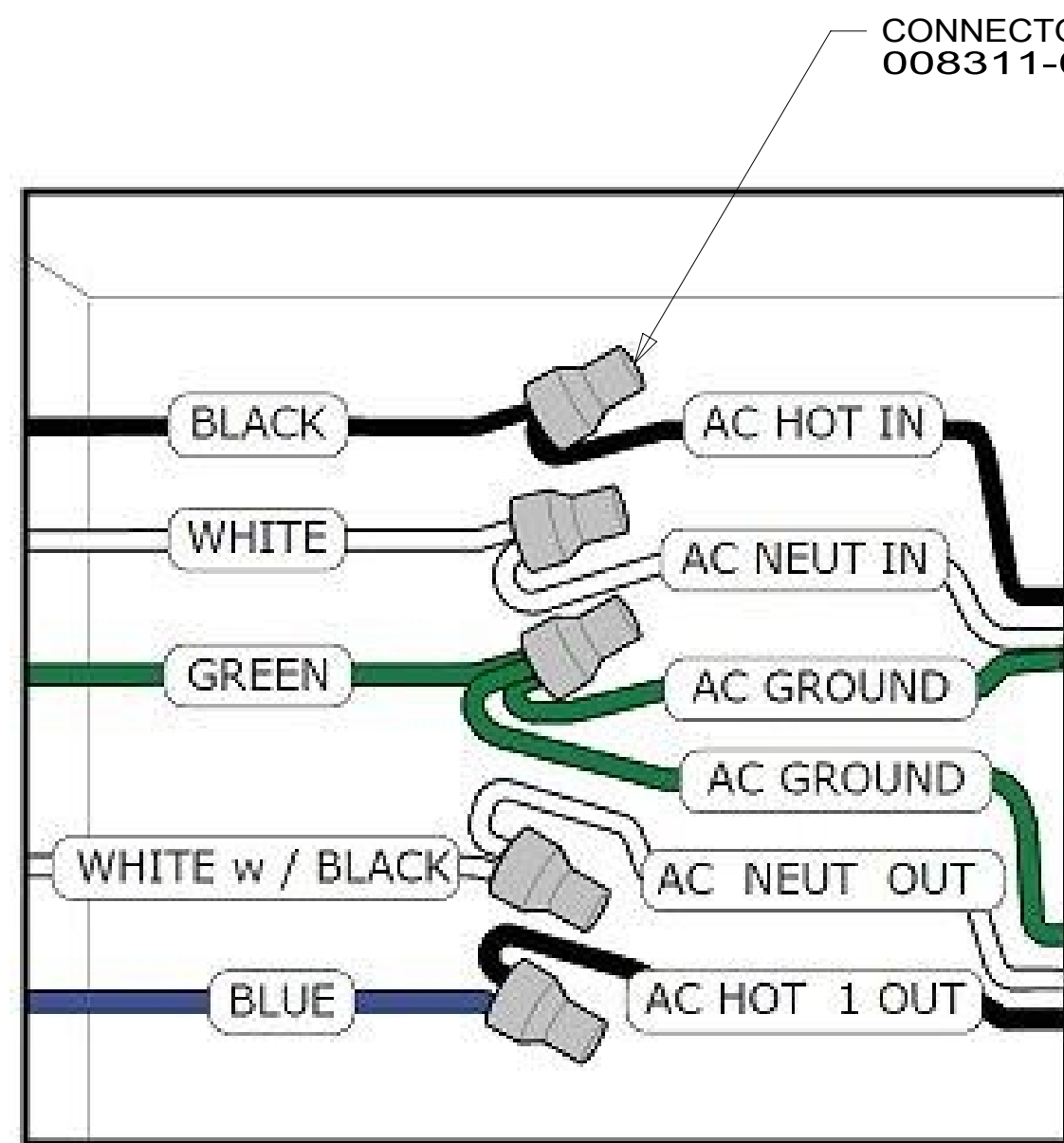
FOR ELECTRICAL TORQUE SPECIFICATIONS SEE DWG NO. 128783-01-000

FOR ELECTRICAL CALLOUTS SEE DWG NO. 121339-01-000

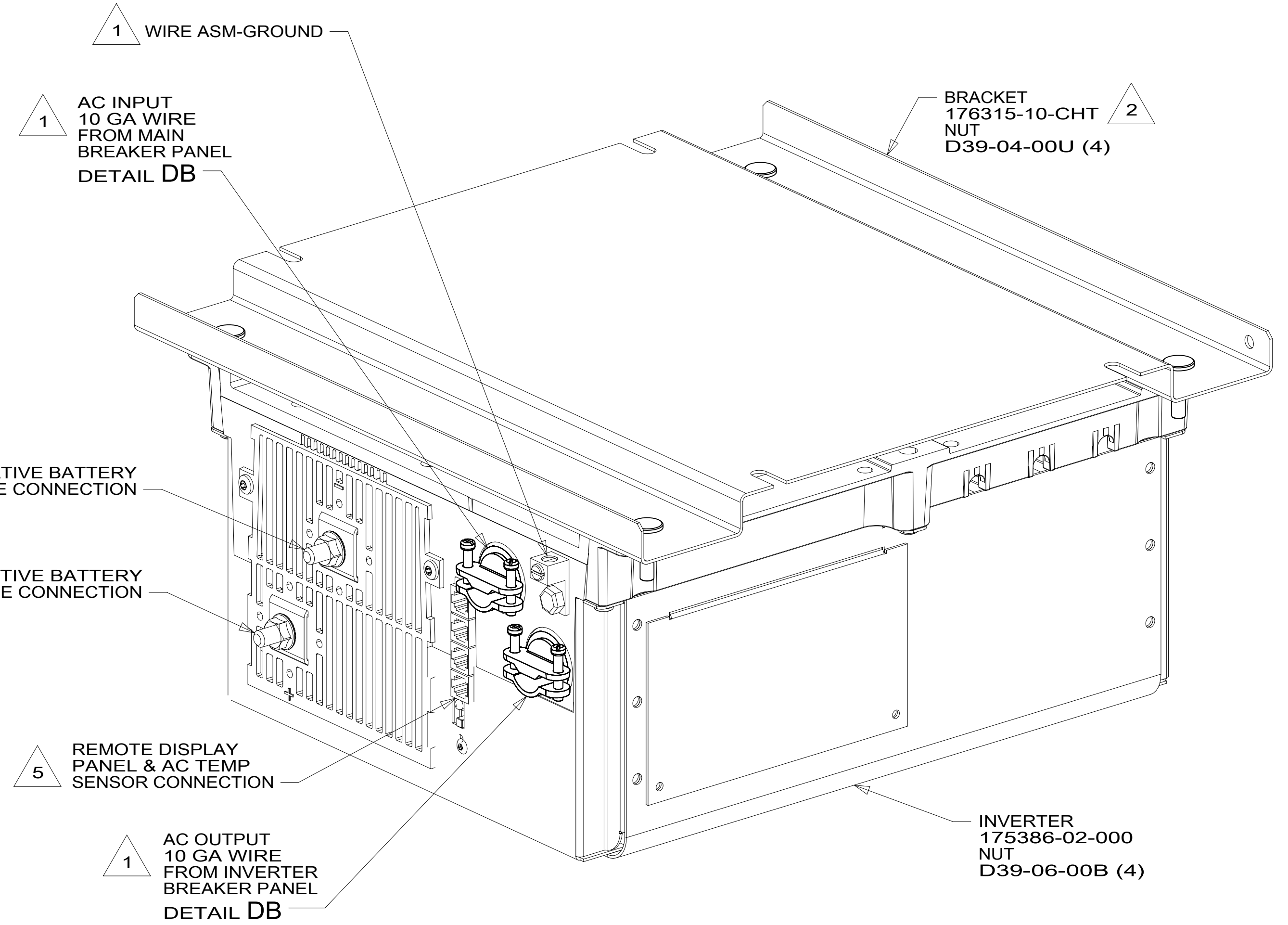
- 1DF EXT TV ENTERTAINMENT CENTER
- 14C FIREPLACE-ELECTRIC
- 265 CODES/STANDARDS-CSA/CMVSS
- 1B1 CODES/STANDARDS USA

DESCRIPTION:	
WIRING INSTL-BODY, 110V	
SHEET:	ITEM/PART NO. REV
3 OF 5	000211500 / 30128501000

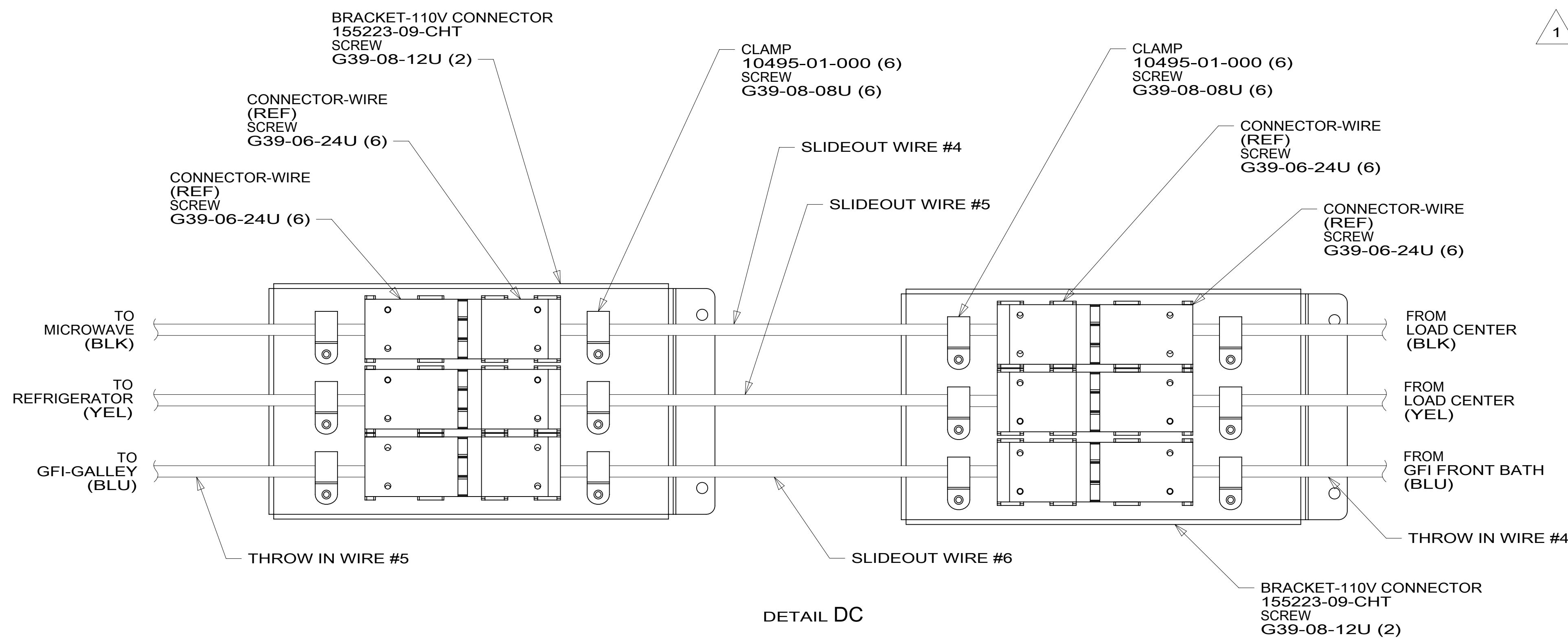
8 7 6 5 4 3 2 1 02-Apr-2018



DETAIL DB



DETAIL DA



DETAIL DC

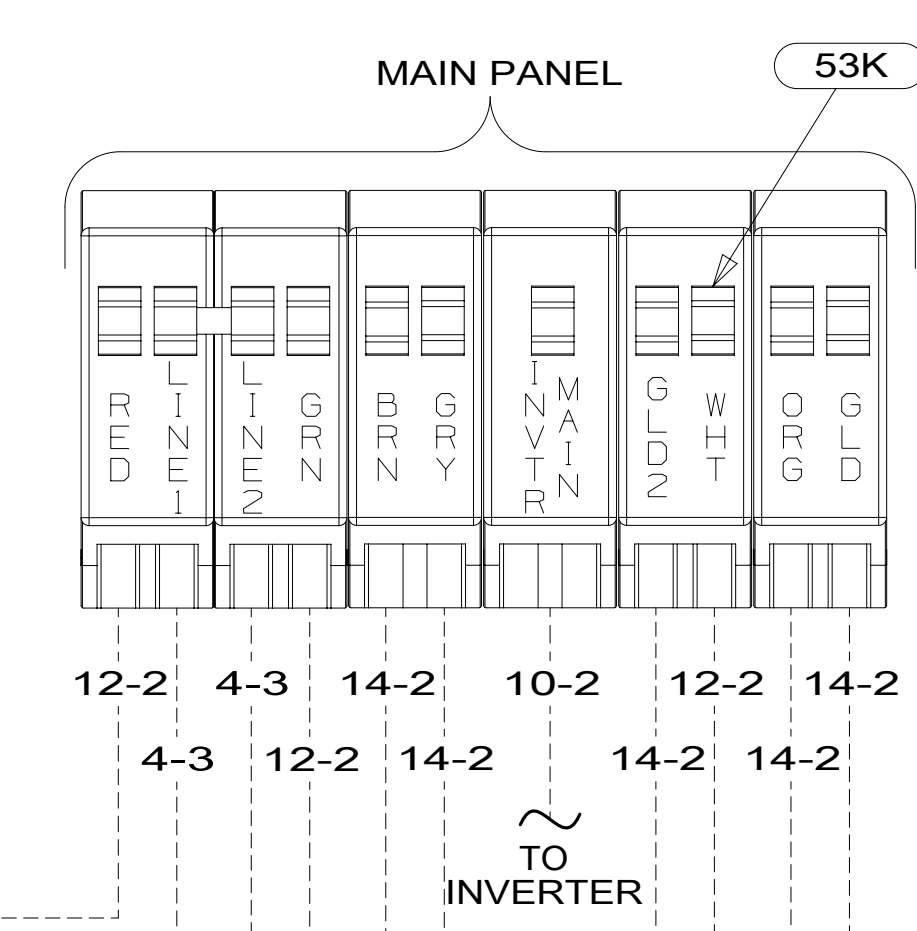
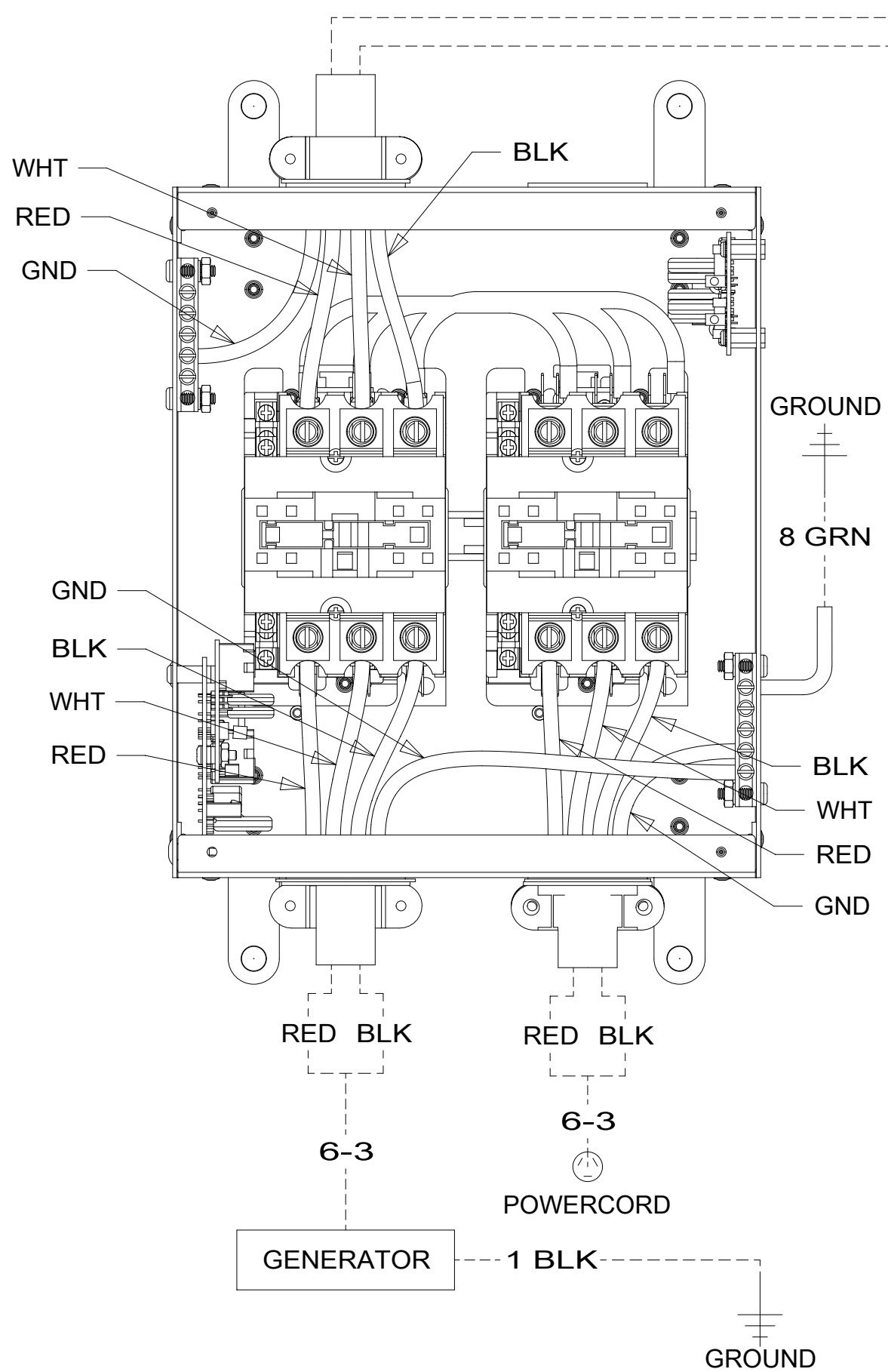
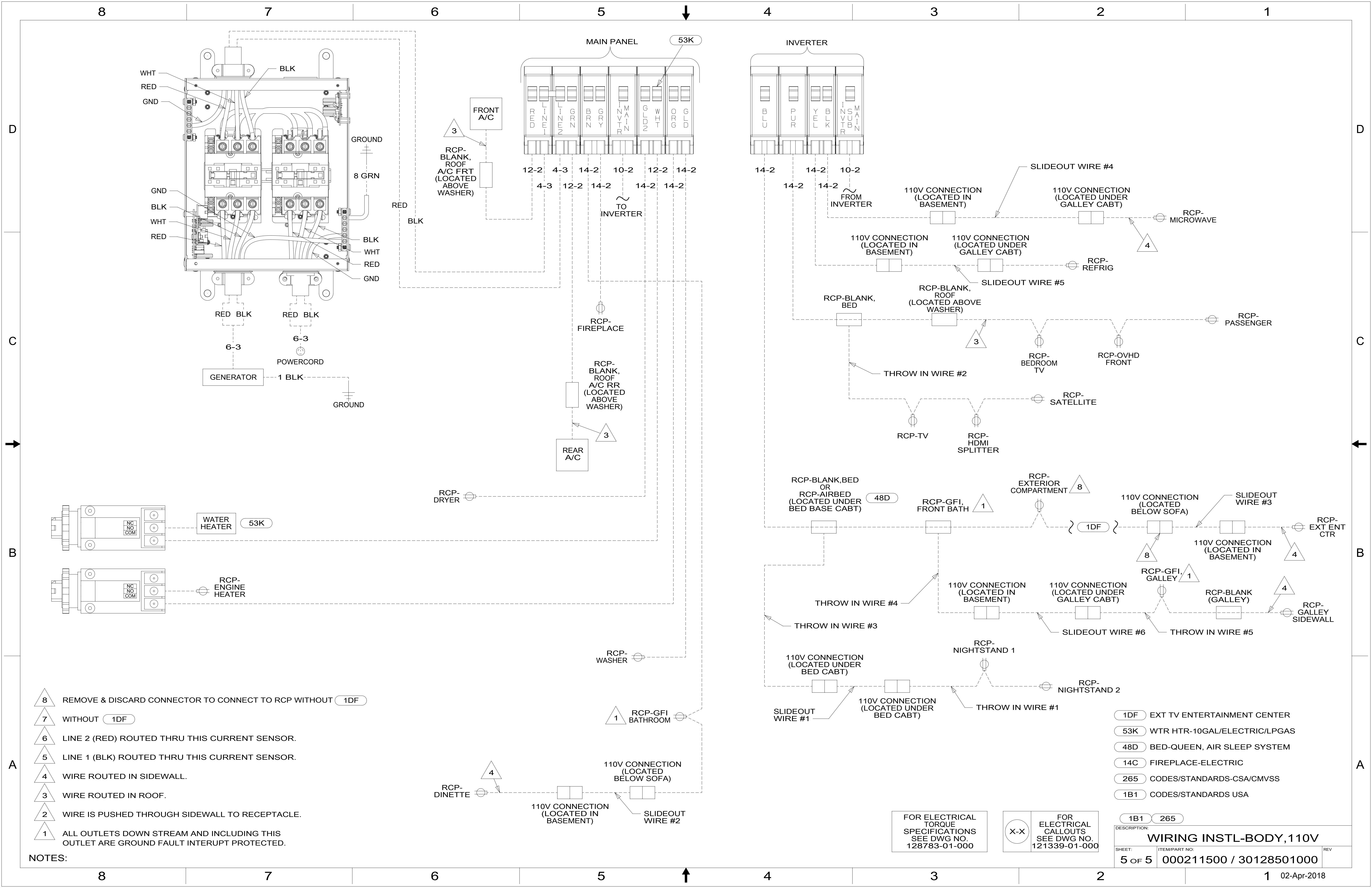
- NOTES:
- 6 DO NOT USE POWER/AIR TOOL TO INSTALL NUT. TORQUE TO 10-12 FT LBS. DO NOT USE A HAMMER.
 - 5 CABLES PART OF WIRE ASM-COACH.
 - 4 SEE INVERTER/CHARGER OWNER'S MANUAL FOR ADDITIONAL INFORMATION.
 - 3 SEE WIRING INSTL-CHASSIS FOR ADDITIONAL INFORMATION.
 - 2 BRACKET IS LOCATED BY HOLES ON BRACKET.
 - 1 SEE LOAD CENTER/ATS ASM FOR ADDITIONAL INFORMATION.

FOR ELECTRICAL TORQUE SPECIFICATIONS SEE DWG NO. 128783-01-000

FOR ELECTRICAL CALLOUTS SEE DWG NO. 121339-01-000

265 CODES/STANDARDS-CSA/CMVSS
1B1 CODES/STANDARDS USA

DESCRIPTION:	
WIRING INSTL-BODY, 110V	
SHEET:	ITEM/PART NO.:
4 OF 5	000211500 / 30128501000
REV	



- NOTES:**
- 8 REMOVE & DISCARD CONNECTOR TO CONNECT TO RCP WITHOUT 1DF
 - 7 WITHOUT 1DF
 - 6 LINE 2 (RED) ROUTED THRU THIS CURRENT SENSOR.
 - 5 LINE 1 (BLK) ROUTED THRU THIS CURRENT SENSOR.
 - 4 WIRE ROUTED IN SIDEWALL.
 - 3 WIRE ROUTED IN ROOF.
 - 2 WIRE IS PUSHED THROUGH SIDEWALL TO RECEPTACLE.
 - 1 ALL OUTLETS DOWN STREAM AND INCLUDING THIS OUTLET ARE GROUND FAULT INTERRUPT PROTECTED.

- 1DF EXT TV ENTERTAINMENT CENTER
- 53K WTR HTR-10GAL/ELECTRIC/LPGAS
- 48D BED-QUEEN, AIR SLEEP SYSTEM
- 14C FIREPLACE-ELECTRIC
- 265 CODES/STANDARDS-CSA/CMVSS
- 1B1 CODES/STANDARDS USA

FOR ELECTRICAL TORQUE SPECIFICATIONS SEE DWG NO. 128783-01-000

FOR ELECTRICAL CALLOUTS SEE DWG NO. 121339-01-000

DESCRIPTION:	
1B1 265	
WIRING INSTL-BODY, 110V	
SHEET:	ITEM/PART NO.:
5 OF 5	000211500 / 30128501000
REV	
1 02-Apr-2018	