

BA

7 ROUTE CAMERA CABLE BEHIND SHOWER

8 ROUTE CAMERA CABLE BEHIND SHOWER

8 ROUTED THROUGH FLOOR IN THIS AREA

6 ANTENNA-SATELLITE RADIO (CHASSIS SUPPLIED) PLATE-SATELLITE PREP 177256-06-CHT 177256-06-CHT SCREW G11-08-08U (4)

6 EXTENSION-ANTENNA, SAT RADIO 181908-04-000

6 MONITOR-POWER SUPPLY DETAIL AA

5 MONITOR-POWER SUPPLY SCREW G67-08-12U (2)

5 WIRE ASM-CHASSIS

4 MONITOR-WINDSHIELD MOUNT 000026027 / 315477-01-000

7 ROUTED THROUGH FLOOR IN THIS AREA

1 2 CABLE ASM-MONITOR

1 3 CIRCUITS TR,UR,KE

ROUTE CAMERA CABLE BELOW BEDBOARD

8 423F ROUTING.

7 423A ROUTING.

6 REMOVE ANTENNA FROM CHASSIS CAB ROOF AND RELOCATE TO MAIN ROOF. USE ANTENNA EXTENSION BETWEEN CHASSIS ANTENNA CABLE AND ANTENNA WHEN RELOCATING ANTENNA. SECURE BOTH ENDS OF ANTENNA EXTENSION WITH TAPE.

5 ROUTE CAMERA CABLE, 6-PIN HSG, AND FUSE THROUGH HOLE IN CABINET. CONNECT TO MONITOR POWER SUPPLY.

4 ROUTE CAMERA WIRE ABOVE HEADLINER.

3 ROUTE CAMERA CABLE UP B-PILLAR.

2 ROUTE REAR MONITOR CAMERA CABLE ALONG FRAME RAIL WITH WIRE ASM-CHASSIS. SEE WIRING INSTL-CHASSIS FOR ADDITIONL INFORMATION.

1 SEE WIRE ASM-CHASSIS FOR ADDITIONAL INFORMATION.

NOTES:

265 CODES/STANDARDS-CSA/CMVSS

1B1 CODES/STANDARDS USA

1B1 265



DSNR:	ALL DIMENSIONS ARE IN MILLIMETERS	
DIFTR:		
UNSPECIFIED TOLERANCES:		
WHOLE DIM (X)	: 3	
ONE-PLACE (X.X)	: 1.5	
TWO-PLACE (X.XX)	: 0.50	
ANGLE	: 1°	
REFER TO ES0018 FOR FASTENER TIGHTENING GUIDELINES	WEIGHT: (LBS)	FIRST USED:
		16 423A

FOR ELECTRICAL TORQUE SPECIFICATIONS SEE DWG NO. 128783-01-000

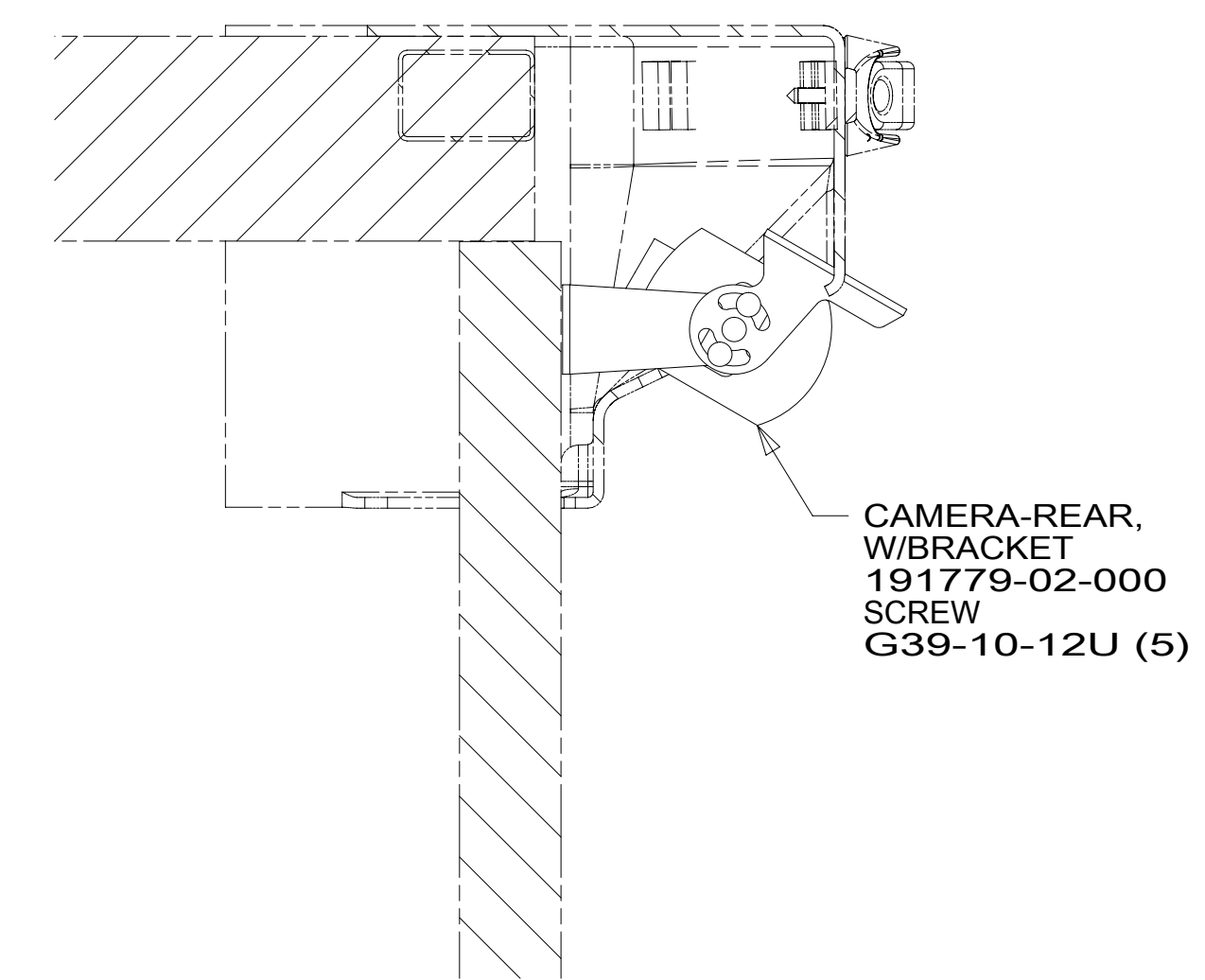
FOR ELECTRICAL CALLOUTS SEE DWG NO. 121339-01-000

DESCRIPTION: RADIO/MONITOR INSTL

SHEET: 1 OF 3 ITEM/PART NO.: 000211425 / 30099801000 REF:

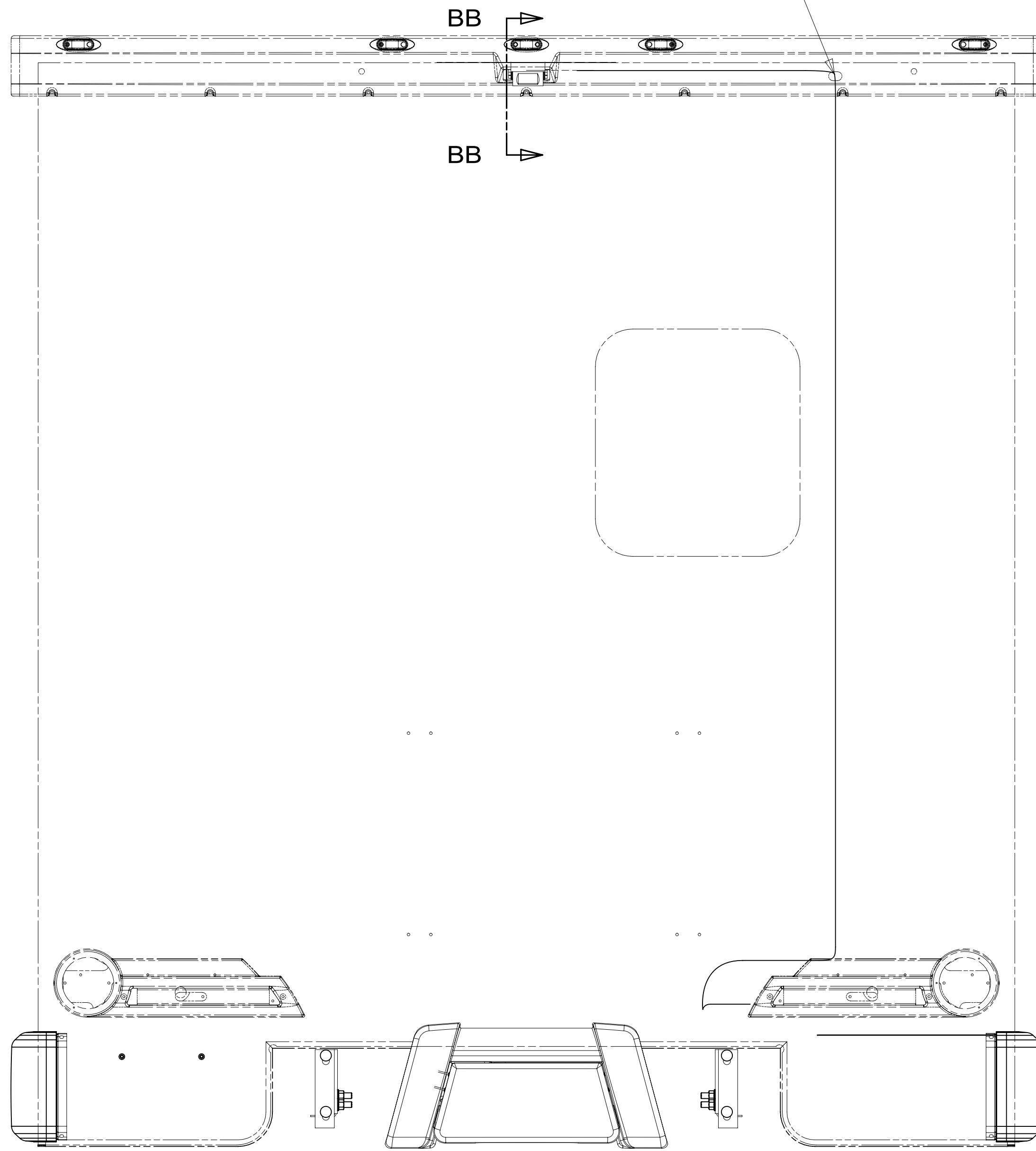
1 15-Jan-2018

8 7 6 5 4 3 2 1

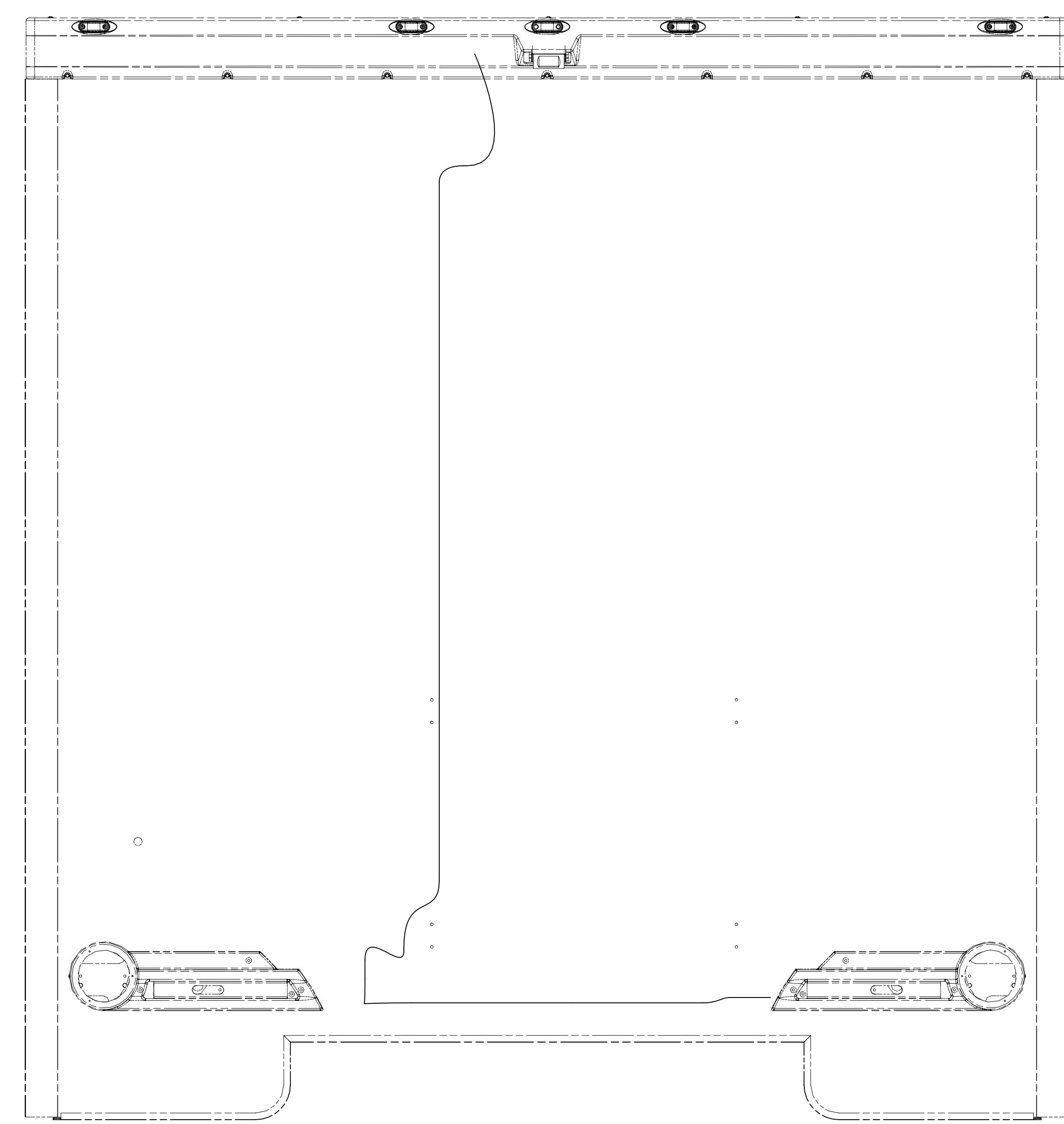


SECTION BB-BB

ROUTE CAMERA CABLE THROUGH BACKWALL



VIEW BA (423A)



VIEW BA (423F)

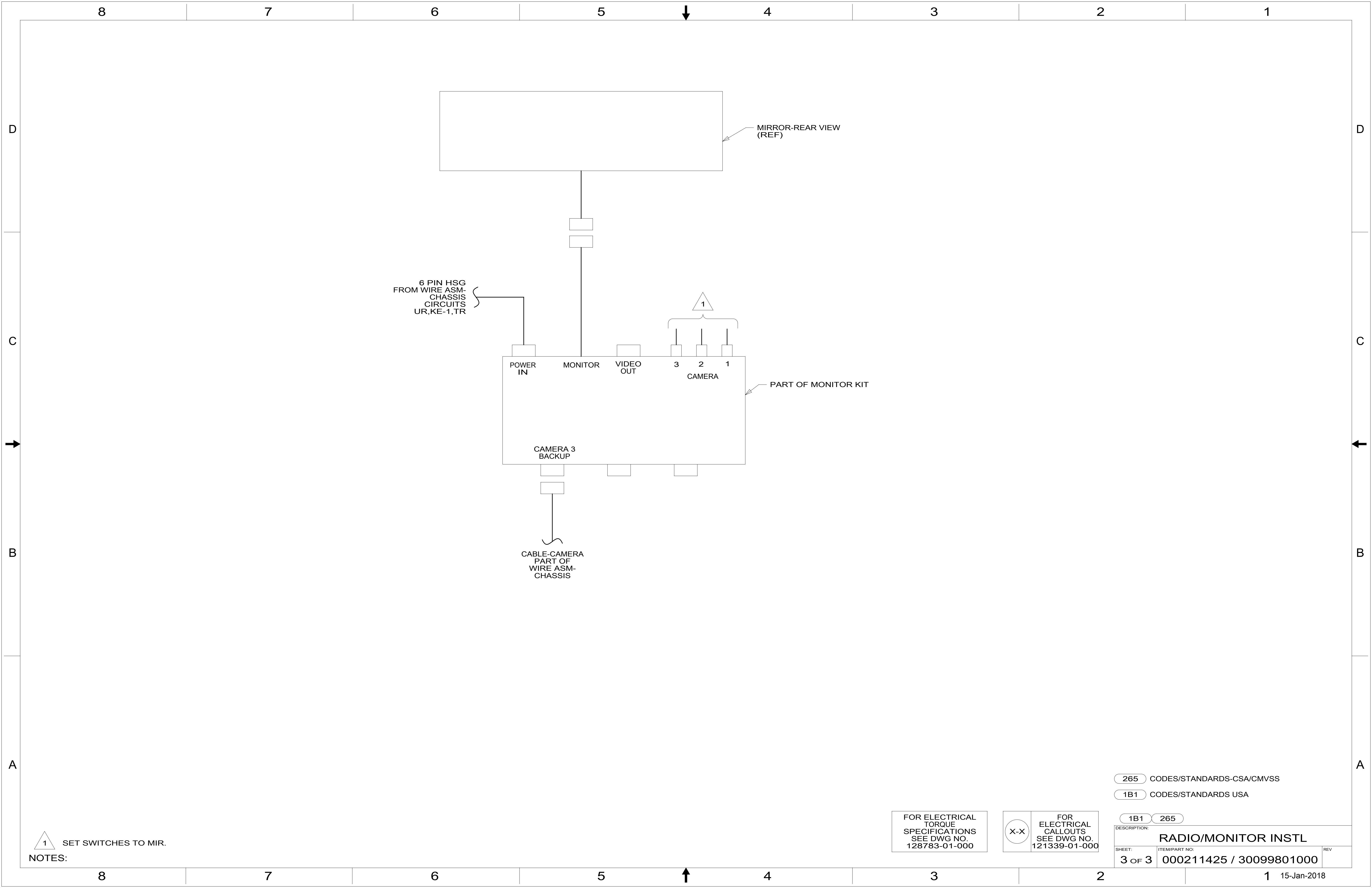
FOR ELECTRICAL TORQUE SPECIFICATIONS SEE DWG NO. 128783-01-000

FOR ELECTRICAL CALLOUTS SEE DWG NO. 121339-01-000

- 265 CODES/STANDARDS-CSA/CMVSS
- 1B1 CODES/STANDARDS USA

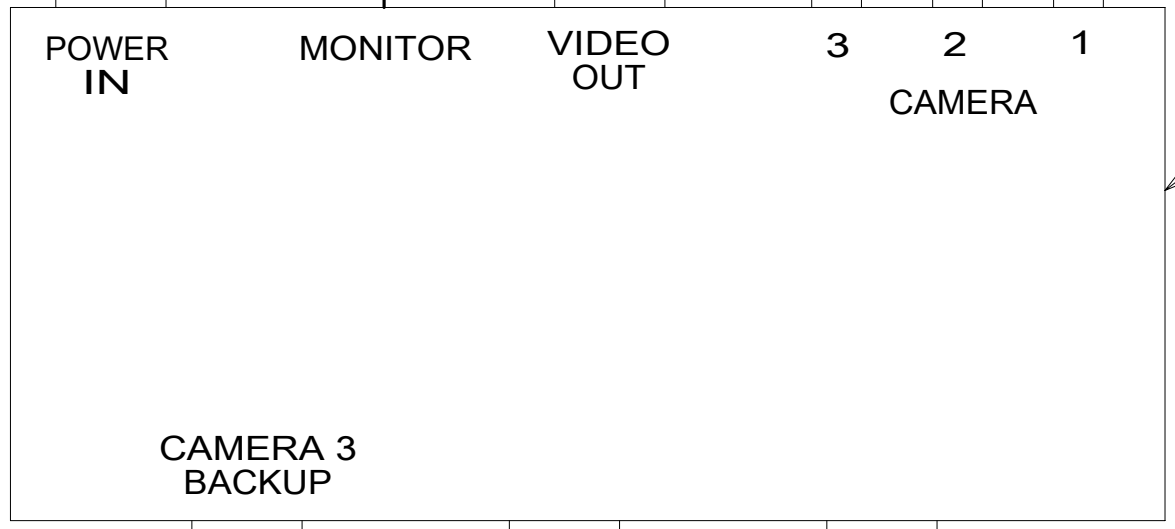
DESCRIPTION:		1B1 265	
RADIO/MONITOR INSTL			
SHEET:	ITEM/PART NO.:	REV	
2 OF 3	000211425 / 30099801000		

8 7 6 5 4 3 2 1 15-Jan-2018



6 PIN HSG
FROM WIRE ASM-
CHASSIS
CIRCUITS
UR,KE-1,TR

MIRROR-REAR VIEW
(REF)



PART OF MONITOR KIT

CABLE-CAMERA
PART OF
WIRE ASM-
CHASSIS

1 SET SWITCHES TO MIR.
NOTES:

FOR ELECTRICAL
TORQUE
SPECIFICATIONS
SEE DWG NO.
128783-01-000

FOR
ELECTRICAL
CALLOUTS
SEE DWG NO.
121339-01-000

265 CODES/STANDARDS-CSA/CMVSS
1B1 CODES/STANDARDS USA

DESCRIPTION:		1B1 265
RADIO/MONITOR INSTL		
SHEET:	ITEM/PART NO.:	REV
3 OF 3	000211425 / 30099801000	