

8 7 6 5 4 3 2 1

DVD PLAYER  
302822-01-000  
FASTENER-DUAL LOCK  
85774-01-000 (200 MM)  
85774-02-000 (200 MM)

PLATE-WALL  
149557-10-CHT  
SCREW  
G67-10-08U (2)

PLATE-WALL,HDMI  
175530-04-CHT  
SCREW  
G67-10-08U (2)

SPLITTER-HDMI, 1X2  
178632-01-000  
FASTENER-DUAL LOCK  
85774-01-000 (100 MM)  
85744-02-000 (100 MM)

783&45B BRACKET-ANTENNA,SATELLITE  
000023112 / 314657-01-CHT  
SCREW  
000G39-08-12U (2)

RCP-2 (PUR)  
OVHD FRONT  
PLATE-WALL,  
POWER SUPPLY  
179004-02-CHT

PANEL ASM  
155127-35-XXX ← 783 45D  
155127-36-XXX ← 78C 45D  
000007511 / 310614-01-XXX ← 45B

GROMMET-EDGE LINER  
114208-05-000

CONTROL-INTERIOR  
183415-05-000  
FASTENER-DUAL LOCK  
85774-01-000 (200 MM)  
85774-02-000 (200 MM)

BOLT-HOOD ADJUSTING  
058786-01-000 (2)  
NUT  
D39-05-00U (2)

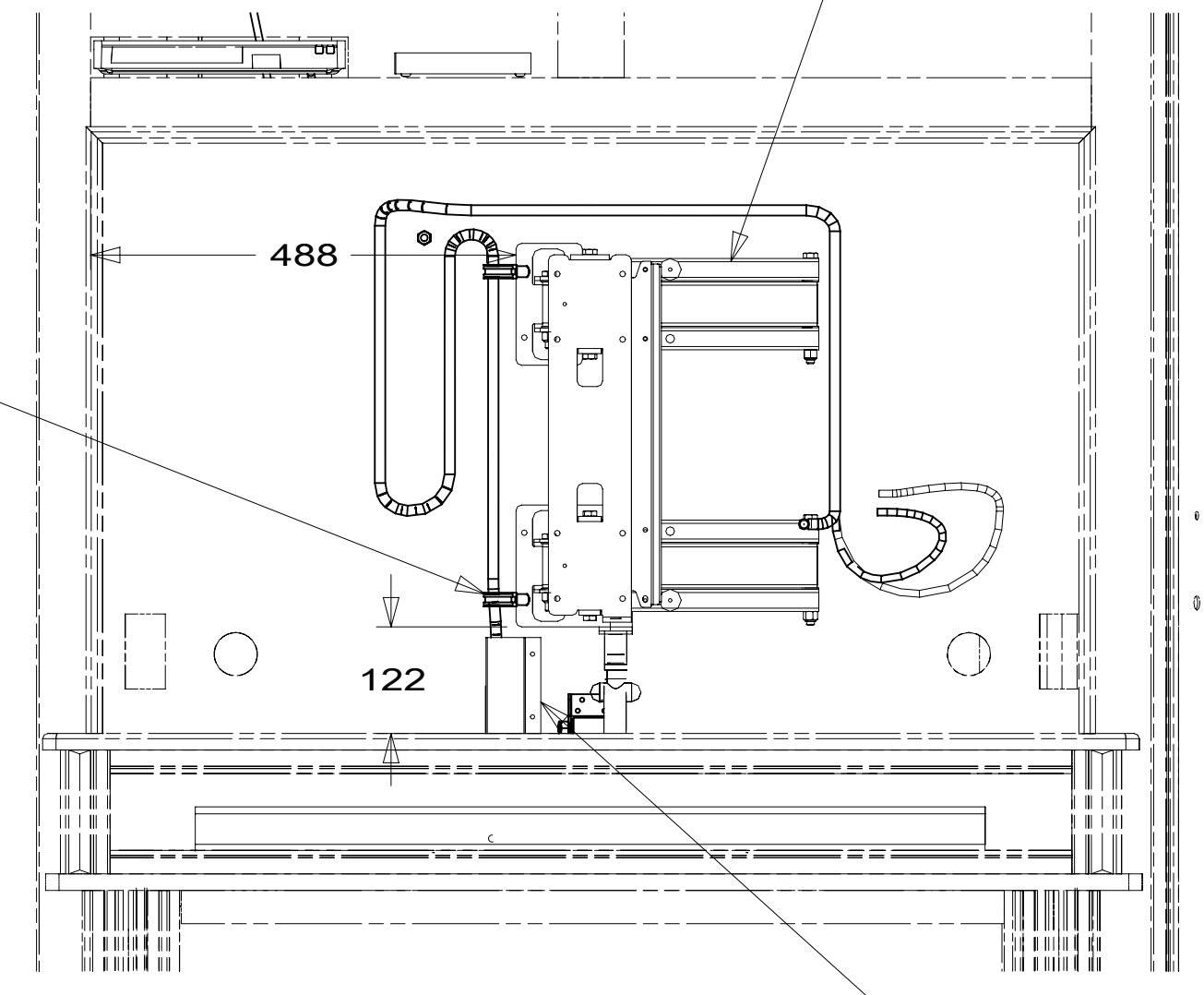
TV-50" FLAT  
PANEL ELED, HDTV  
194671-01-000  
BRACKET-MOUNT,TV  
195253-01-CHT  
SCREW  
G11-08-12U (4)  
PLATE ASM-MOUNTIN,TV  
302680-01-CHT  
SCREW  
G39-10-12U (4)

BRACKET-TV SWING MOUNT  
179241-04-CHT  
SCREW  
G42-04-16U (8)

CLAMP  
10497-03-000 (2)  
SCREW  
G39-08-12U (2)

SPEAKER-SOUNDBAR, WIRELESS SUB, SAMSUNG  
000170008 / 330888-01-000  
FASTENER-DUAL LOCK  
085774-01-000 (50 MM)(2)  
085774-02-000 (50 MM)(2)

COVER-WIRE  
176981-01-CHT



VIEW AA

FOR ELECTRICAL  
TORQUE  
SPECIFICATIONS  
SEE DWG NO.  
128783-01-000

FOR ELECTRICAL  
CALLOUTS  
SEE DWG NO.  
121339-01-000

- 45D LOFT BED - WITHOUT
- 45B LOFT BED
- 78C SATELLITE SYSTEM READY
- 783 SATELLITE HD TV SYSTEM AUTOC
- 265 CODES/STANDARDS-CSA/CMVSS
- 1B1 CODES/STANDARDS USA

1B1 265

COPYRIGHT 2016 WINNEBAGO INDUSTRIES, INC.

DSNR:		ALL DIMENSIONS ARE IN MILLIMETERS	
DIFFR:		MATERIAL:	
UNSPECIFIED TOLERANCES:		WEIGHT: (LBS)	FIRST USED:
WHOLE DIM (X)	: 3		17 L38W
ONE-PLACE (X.X)	: 1.5		
TWO-PLACE (X.XX)	: 0.50		
ANGLE	: 1°		
REFER TO ES0018 FOR FASTENER TIGHTENING GUIDELINES			
DESCRIPTION: <b>WIRING INSTL-TV/DVD</b>			
SHEET:	ITEM/PART NO.:	REV:	
1 OF 3	000181274 / 30129201000		
REF:		1 07-Nov-2018	

2 USE TIE-WIRE 8343-01 TO SUPPORT WIRE HERE.

1 INTERIOR CONTROL CONNECTS TO SATELLITE DATA CABLE. SEE ROOF ASM FOR ADDITIONAL INFORMATION.

NOTES:

8 7 6 5 4 3 2 1

8 7 6 5 4 3 2 1



D

D

C

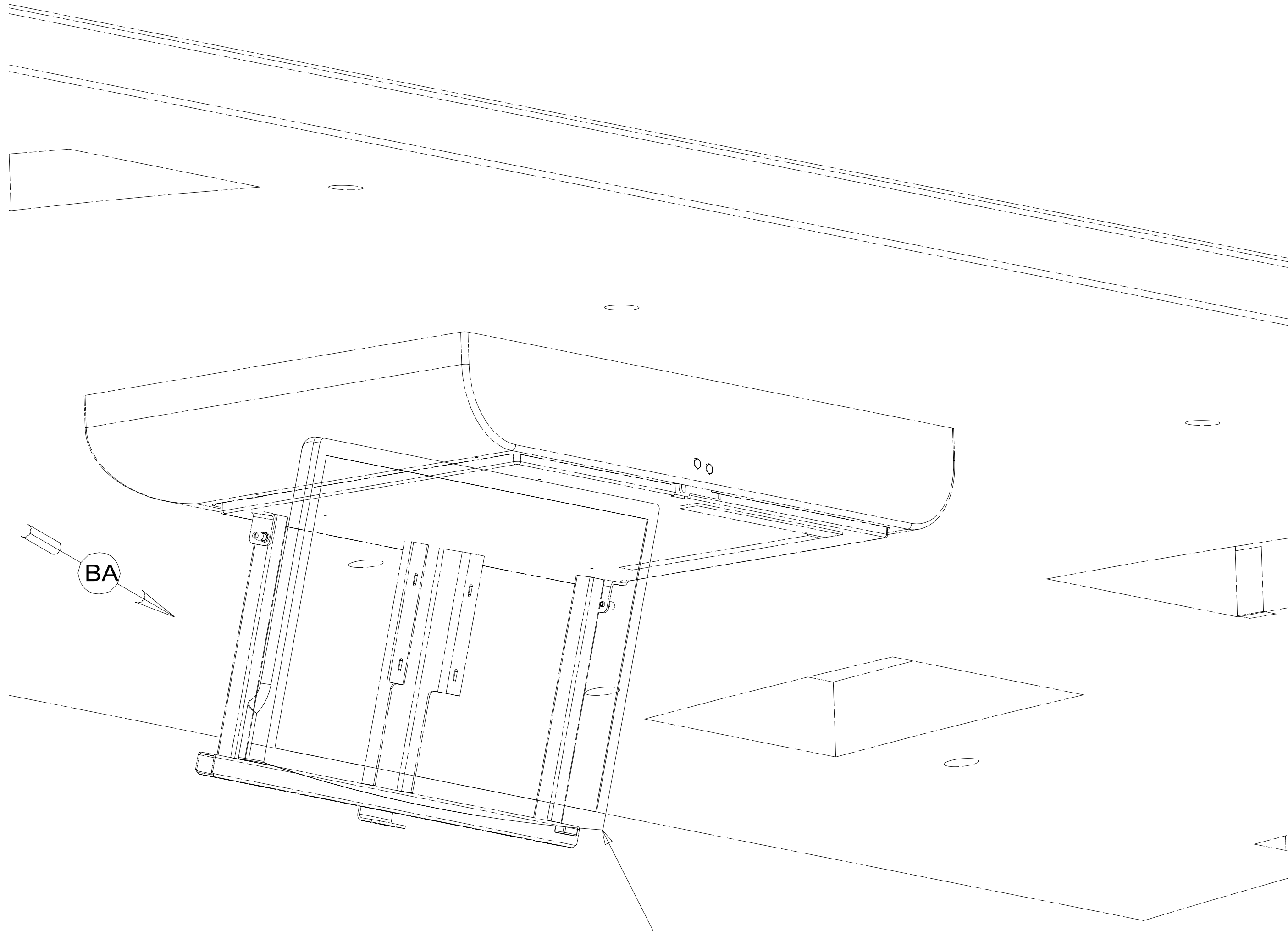
C

B

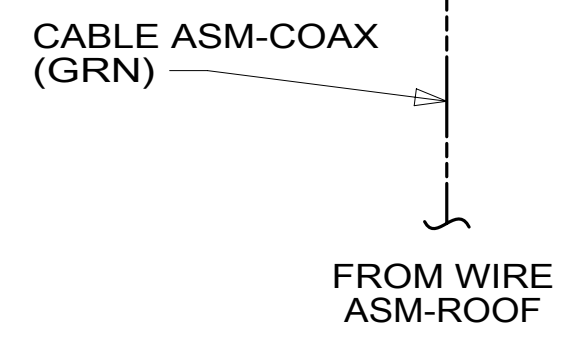
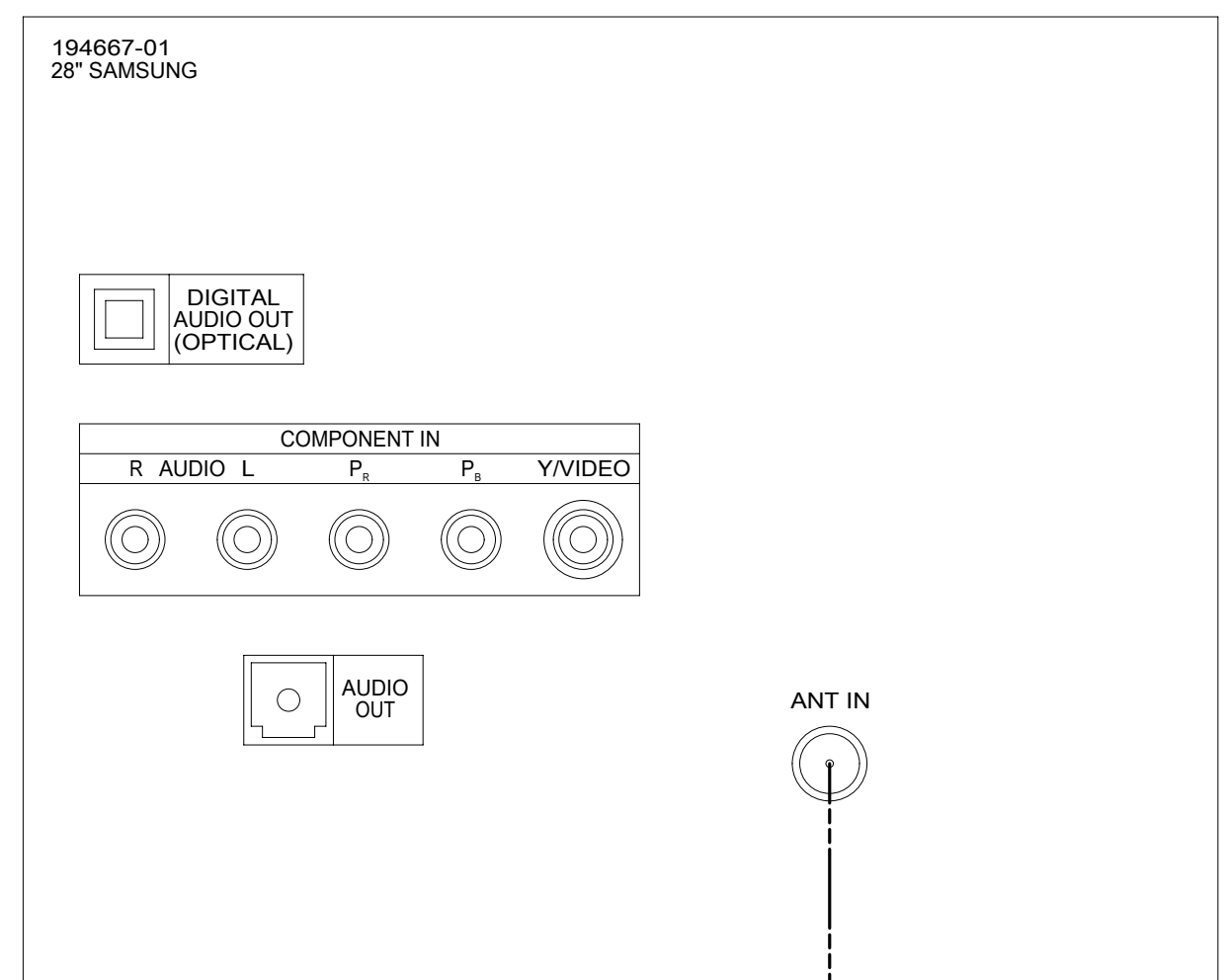
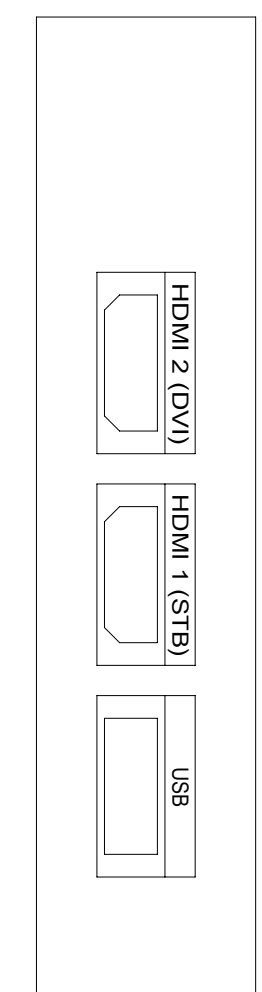
B

A

A



TV-28" FLAT  
 PANEL ELED.HDTV  
 194667-01-000  
 SCREW-VESA  
 OMG02U-06-010 (4)  
 SCREW BASE  
 (SUPPLIED W/ TV)  
 SCREW  
 G39-08-12U



VIEW BA

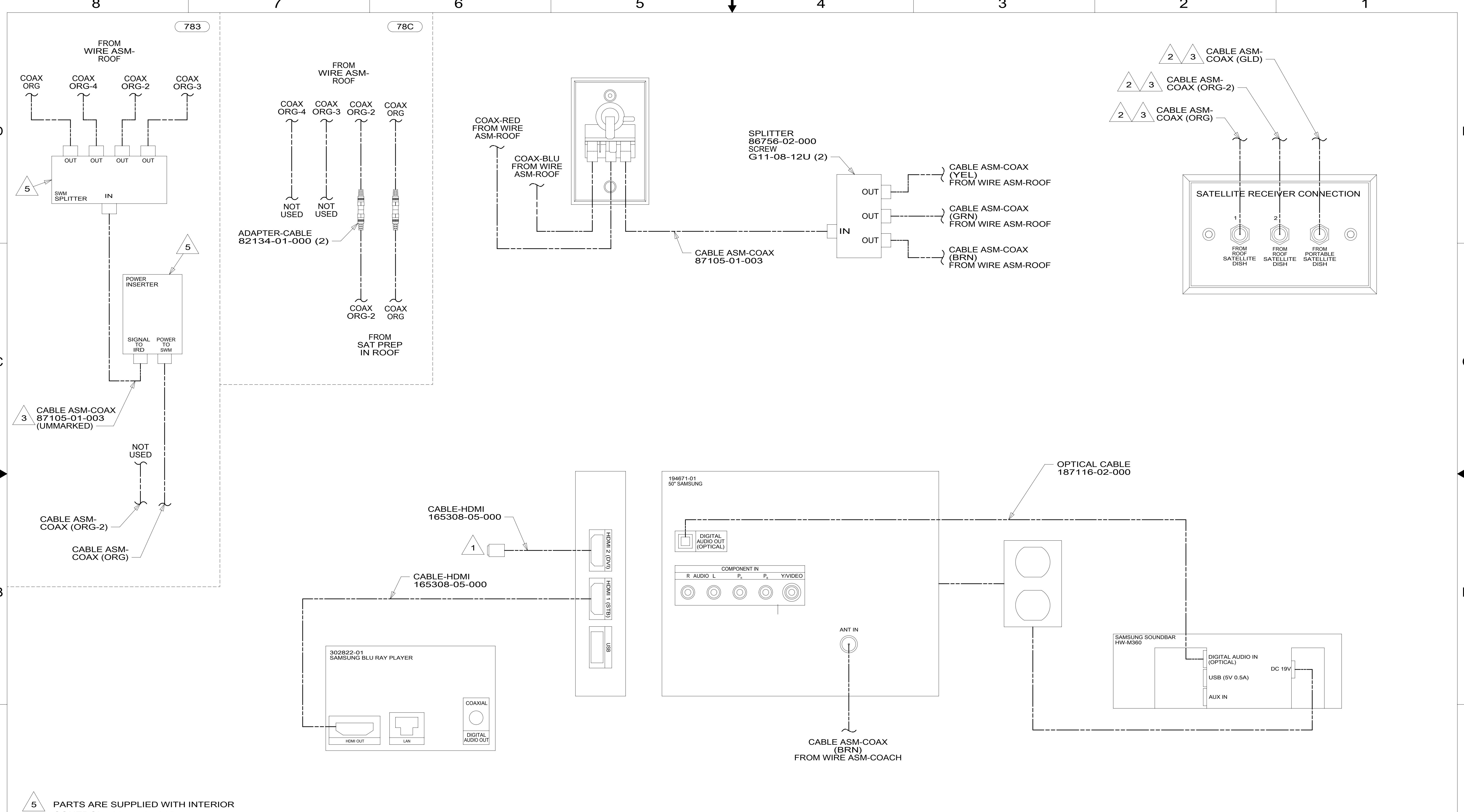
265 CODES/STANDARDS-CSA/CMVSS  
 1B1 CODES/STANDARDS USA

FOR ELECTRICAL  
 TORQUE  
 SPECIFICATIONS  
 SEE DWG NO.  
 128783-01-000

FOR ELECTRICAL  
 CALLOUTS  
 SEE DWG NO.  
 121339-01-000

DESCRIPTION:		1B1	265
<b>WIRING INSTL-TV/DVD</b>			
SHEET:	ITEM/PART NO.:	REV	
2 OF 3	000181274 / 30129201000		

8 7 6 5 4 3 2 1 07-Nov-2018



- NOTES:
- 5 PARTS ARE SUPPLIED WITH INTERIOR CONTROL 183415-05-000.
  - 4 CONNECT ANTENNA CABLES TO SOUND BAR AND MOUNT ANTENNA BEHIND FIREPLACE.
  - 3 CABLE ROUTED IN ROOF.
  - 2 CABLE CONNECTS TO REAR SIDE OF PLATE.
  - 1 COIL IN AV PREP SHELF AREA.

VIEW CA

FOR ELECTRICAL TORQUE SPECIFICATIONS SEE DWG NO. 128783-01-000

FOR ELECTRICAL CALLOUTS SEE DWG NO. 121339-01-000

- 783 SATELLITE HD TV SYSTEM AUTOC
- 265 CODES/STANDARDS-CSA/CMVSS
- 1B1 CODES/STANDARDS USA

DESCRIPTION:		<b>WIRING INSTL-TV/DVD</b>	
SHEET:	ITEM/PART NO.:	REV	
3 OF 3	000181274 / 30129201000		