

RED	1B1	136135-07-081
	265	136136-07-081
GRN	1B1	136135-08-081
	265	136136-08-081
YEL	1B1	136131-05-058
	265	136134-05-058
GLD	1B1	136131-10-083
	265	136134-10-083
GLD-2	1B1	136131-20-065
	265	136134-20-065
BLU	1B1	136131-02-113
	265	136134-02-113
BRN	1B1	136131-03-200
	265	136134-03-200
PUR	1B1	136131-04-090
	265	136134-04-090
WHT	1B1	136135-09-045
	265	136136-09-045

1  
1

1  
1  
1  
1

53K  
53K

ORG	1B1	136131-16-028
	265	136134-16-028
BLK	1B1	136131-06-058
	265	136134-06-058
GRY	1B1	136131-15-065
	265	136134-15-065
INVERTER CHARGER MAIN	1B1	136137-01-040
	265	136138-01-040
INVERTER CHARGER SUB MAIN	1B1	136137-01-040
	265	136138-01-040
CABLE ASM-MAIN, 6 AWG		176841-01-034
MAIN GROUND		136145-01-025
ATS GROUND		136145-01-020
INVERTER GROUND		136145-04-022
GENERATOR CABLE ASM		136148-02-109

1  
1

14C  
14C

- 53K WTR HTR-10GAL/ELECTRIC/LPGAS
- 14C FIREPLACE-ELECTRIC
- 265 CODES/STANDARDS-CSA/CMVSS
- 1B1 CODES/STANDARDS USA

1B1 265



DSNR:	ALL DIMENSIONS ARE IN MILLIMETERS	
DIFTR:		
UNSPECIFIED TOLERANCES:		
WHOLE DIM (X)	: 3	
ONE-PLACE (X.X)	: 1.5	
TWO-PLACE (X.XX)	: 0.50	
ANGLE	: 1°	
REFER TO ES0018 FOR FASTENER TIGHTENING GUIDELINES	WEIGHT: (LBS)	FIRST USED:
		17 L38W

FOR ELECTRICAL TORQUE SPECIFICATIONS SEE DWG NO. 128783-01-000

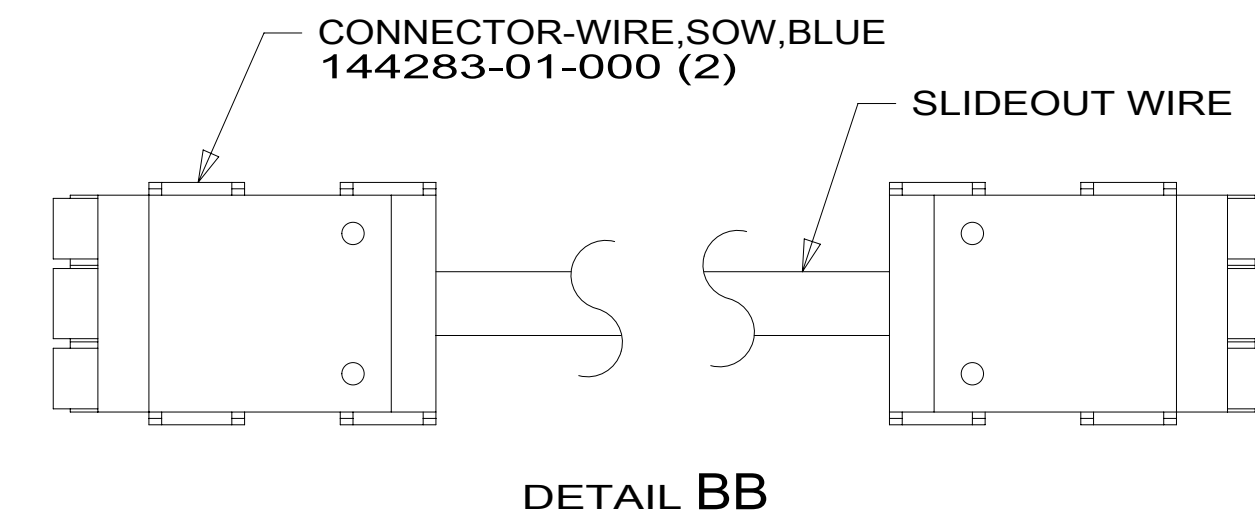
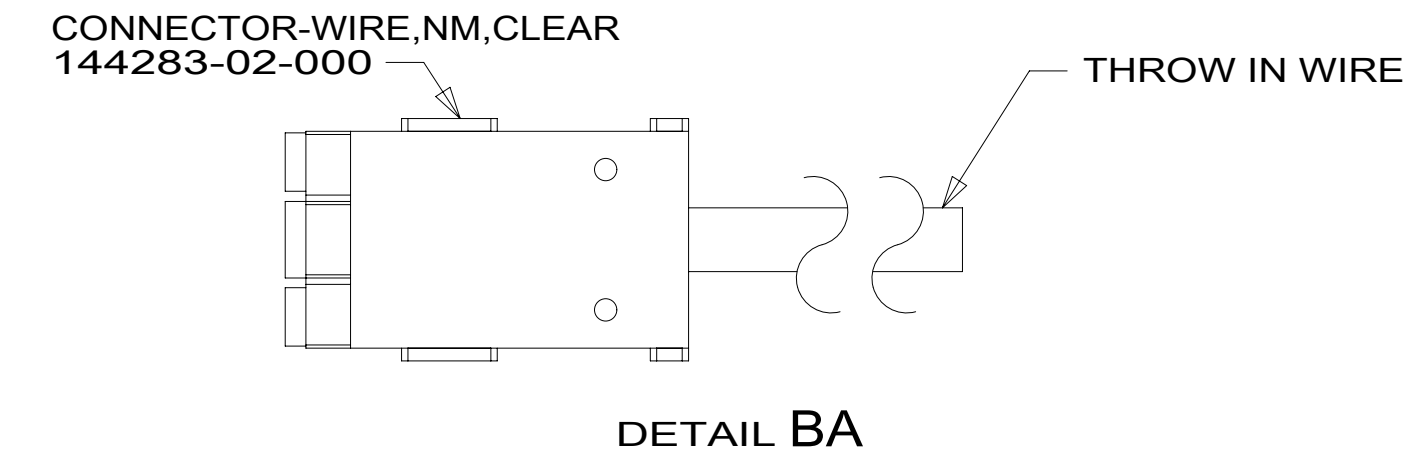
FOR ELECTRICAL CALLOUTS SEE DWG NO. 121339-01-000

DESCRIPTION: <b>LOAD CENTER/ATS ASM</b>		
SHEET: 1 OF 4	ITEM/PART NO: 000181272 / 30129101000	REV:
REF:		1 12-Jan-2018

NOTES:  
1 SEE DETAIL BA FOR CONNECTOR INSTALLATION.

THROW IN WIRE #1	1B1	136131-02-055	1
	265	136134-02-055	1
THROW IN WIRE #2	1B1	136131-04-090	
	265	136134-04-090	
THROW IN WIRE #3	1B1	136131-02-003	1
	265	136134-02-003	1
THROW IN WIRE #4	1B1	136131-02-075	1
	265	136134-02-075	1
THROW IN WIRE #5	1B1	136131-02-056	1
	265	136134-02-056	1

SLIDEOUT WIRE #1	136151-02-014	2
SLIDEOUT WIRE #2	136151-03-028	2
SLIDEOUT WIRE #3	136151-02-028	2 1DF
SLIDEOUT WIRE #4	136151-06-022	2
SLIDEOUT WIRE #5	136151-05-022	2
SLIDEOUT WIRE #6	136151-02-022	2



- 1DF EXT TV ENTERTAINMENT CENTER
- 265 CODES/STANDARDS-CSA/CMVSS
- 1B1 CODES/STANDARDS USA

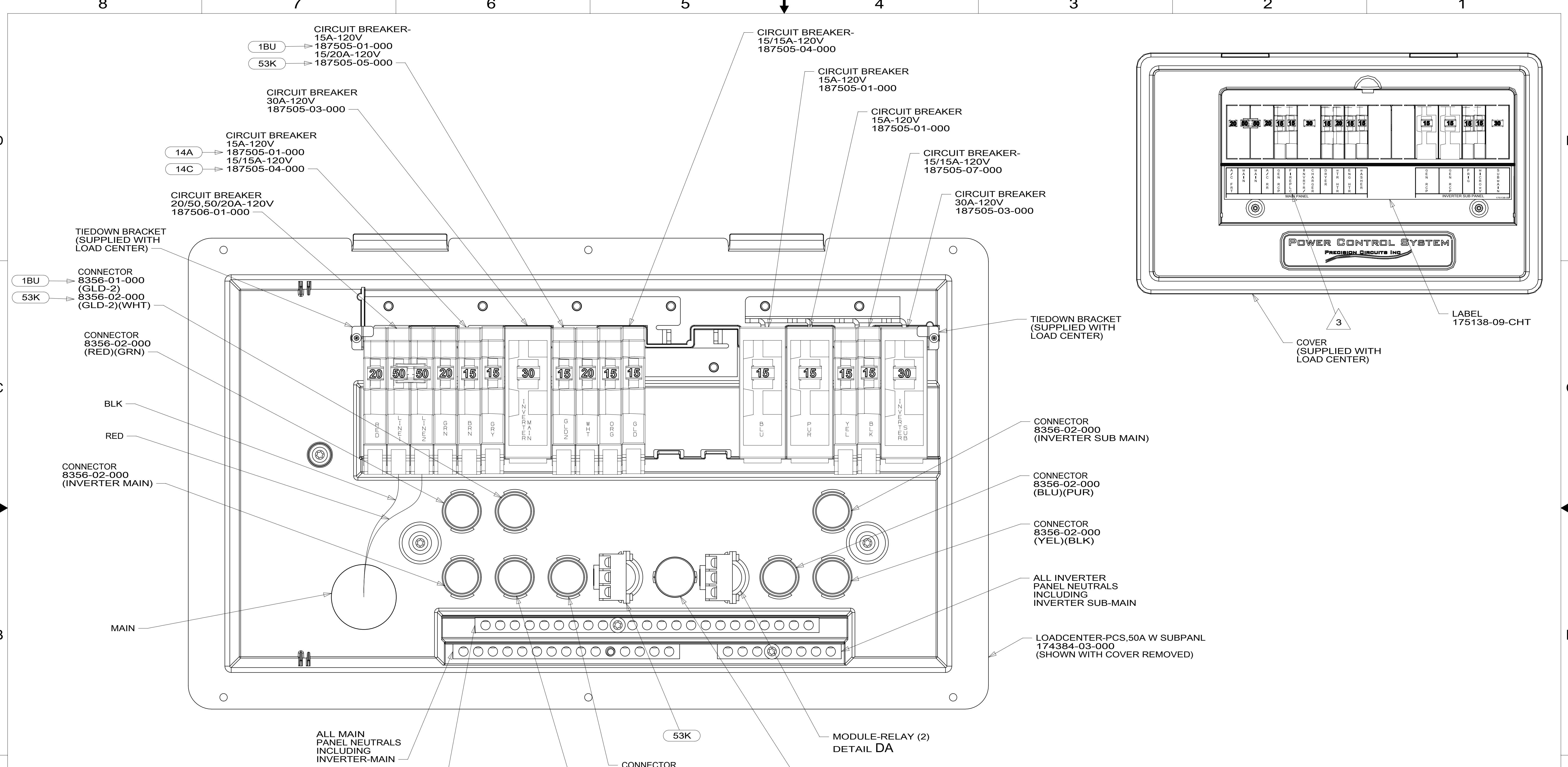
2 SEE DETAIL BB FOR CONNECTOR INSTALLATION.  
1 SEE DETAIL BA FOR CONNECTOR INSTALLATION.

NOTES:

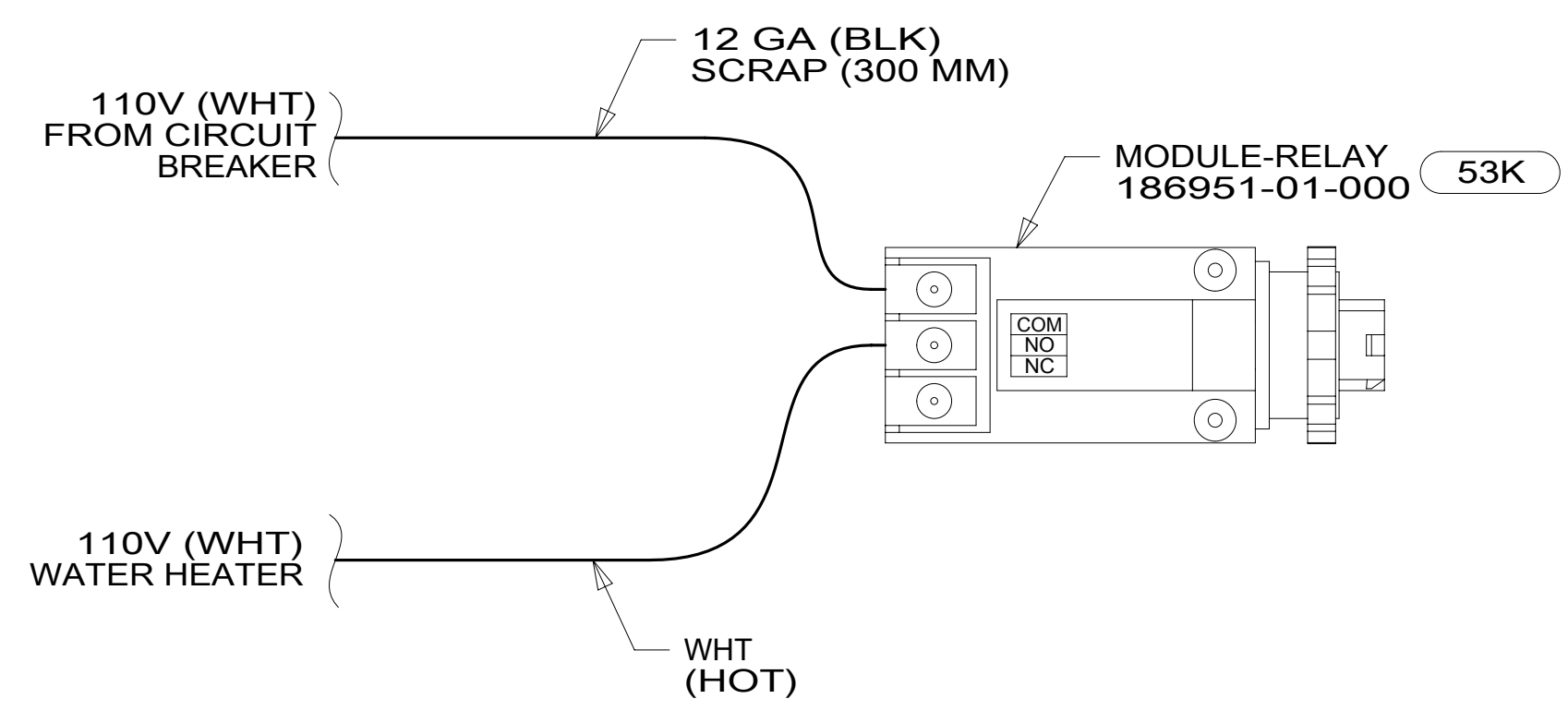
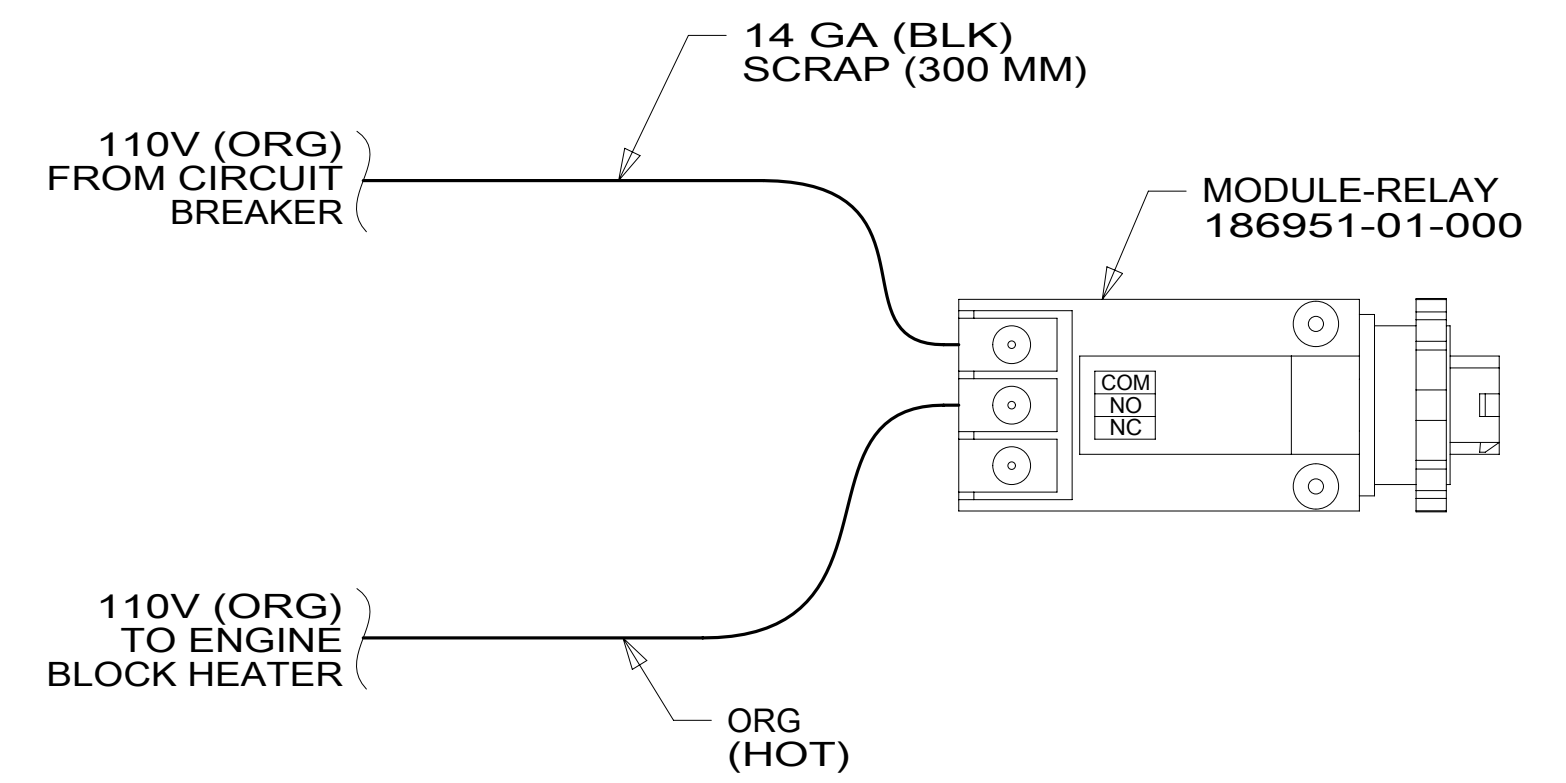
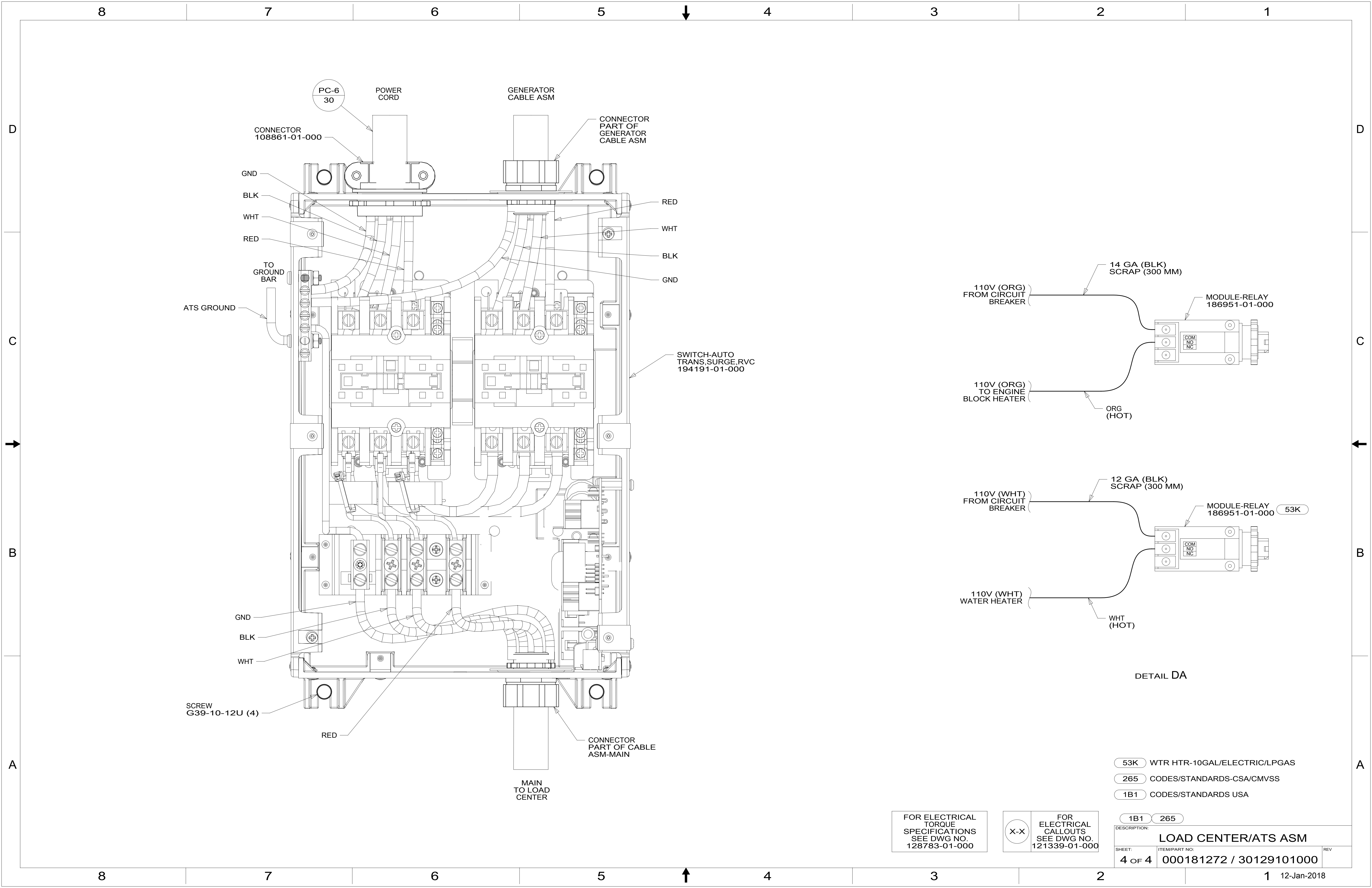
FOR ELECTRICAL TORQUE SPECIFICATIONS SEE DWG NO. 128783-01-000

FOR ELECTRICAL CALLOUTS SEE DWG NO. 121339-01-000

DESCRIPTION:	1B1 265	
LOAD CENTER/ATS ASM		
SHEET:	ITEM/PART NO:	REV
2 OF 4	000181272 / 30129101000	



- NOTES:**
- ALL GROUND WIRES TO BE COVERED WITH TUBING 8041-02-000.
  - REMOVE 400MM FROM OUTER JACKET ON ALL WIRES ENTERING LOAD CENTER AND TRIM INDIVIDUAL CONDUCTORS AS REQUIRED TO MAKE INTERNAL CONNECTIONS
  - BLACKEN OUT FIREPLACE WITH OPTION 14A
- LEGEND:**
- 1BU WTR HTR TKLS W/RECIRCUL PUMP
  - 53K WTR HTR-10GAL/ELECTRIC/LPGAS
  - 14C FIREPLACE-ELECTRIC
  - 14A FIREPLACE-ELECTRIC WITHOUT
  - 32W GENERATOR-START,AUTO SYSTEM
  - 265 CODES/STANDARDS-CSA/CMVSS
  - 1B1 CODES/STANDARDS USA
- FOR ELECTRICAL TORQUE SPECIFICATIONS SEE DWG NO. 128783-01-000**
- FOR ELECTRICAL CALLOUTS SEE DWG NO. 121339-01-000**
- |                            |                         |     |
|----------------------------|-------------------------|-----|
| DESCRIPTION:               | 1B1 265                 |     |
| <b>LOAD CENTER/ATS ASM</b> |                         |     |
| SHEET:                     | ITEM/PART NO:           | REV |
| 3 OF 4                     | 000181272 / 30129101000 |     |



DETAIL DA

- 53K WTR HTR-10GAL/ELECTRIC/LPGAS
- 265 CODES/STANDARDS-CSA/CMVSS
- 1B1 CODES/STANDARDS USA

FOR ELECTRICAL TORQUE SPECIFICATIONS SEE DWG NO. 128783-01-000

FOR ELECTRICAL CALLOUTS SEE DWG NO. 121339-01-000

DESCRIPTION:	1B1 265	
<b>LOAD CENTER/ATS ASM</b>		
SHEET:	ITEM/PART NO.:	REV
4 OF 4	000181272 / 30129101000	