

8

7

6

5

4

3

2

1



D

D

CABLE ASM (YEL) FROM COACH BATTERY FUSE TO COACH SIDE OF AUX START SOLENOID	175207-52-037
CABLE ASM (ORG) FROM COACH BATTERY TO INVERTER FUSE	175207-62-003
CABLE ASM (ORG) FROM INVERTER FUSE TO INVERTER DISCONNECT	175207-62-012
CABLE ASM (ORG) FROM INVERTER DISCONNECT TO INVERTER POSITIVE TERMINAL	175207-62-005
CABLE ASM (BLK) FROM BATTERY TO INVERTER NEGATIVE TERMINAL	175211-01-018
CABLE ASM (BLK) FROM COACH BATTERY TO FRAME RAIL GROUND	175211-02-030
CABLE ASM (BLU) FROM CHASSIS ISOLATED STUD TO LEVELING SYSTEM PUMP	141416-26-198
CABLE ASM (BLK) FROM LEVELING SYSTEM TO FRAME RAIL GROUND	133567-11-005
CABLE ASM (GRN) FROM COACH BAT DISC RELAY FUSE TO PASS THRU STUD IN FRONT LEFT COMPT	175207-42-122
CABLE ASM (GRN) FROM PASS THRU STUD IN FRONT LEFT COMPT TO GENERATOR	175207-42-024
CABLE ASM (BLK) FROM GENERATOR TO FRAME RAIL GROUND BOLT	175211-02-013
CABLE ASM (YEL) JUMPER BETWEEN POSITIVE POSTS ON COACH BATTERY	141417-51-002 (3)
CABLE ASM (BLK) JUMPER BETWEEN NEGATIVE POSTS ON COACH BATTERY	133568-11-002 (3)
CABLE ASM (RED) JUMPER BETWEEN POSITIVE POSTS IN LEFT FRONT COMPT	141417-32-002
CABLE ASM-TEMPERATURE,BATTERY	175385-03-000
CABLE ASM (RED) FROM CHASSIS BATTERY FUSE TO CHASSIS SIDE OF AUX START SOLENOID	175207-35-009
CABLE ASM (RED) FROM CHASSIS BATTERY TO CHASSIS BATTERY FUSE	175207-35-005
CABLE ASM (YEL) FROM COACH BATTERY TO COACH BATTERY FUSE	175207-52-003

C

C



B

B

A

A

8

7

6

5

4

3

2

1



265 CODES/STANDARDS-CSA/CMVSS

1B1 CODES/STANDARDS USA

1B1 265



COPYRIGHT 2016 WINNEBAGO INDUSTRIES, INC.

DSNR:		ALL DIMENSIONS ARE IN MILLIMETERS		
DFFR:		MATERIAL:		
UNSPECIFIED TOLERANCES:				
WHOLE DIM (X)	: 3			
ONE-PLACE (X.X)	: 1.5			
TWO-PLACE (X.XX)	: 0.50			
ANGLE	: 1°			

REFER TO ES0018 FOR FASTENER TIGHTENING GUIDELINES

WEIGHT: (LBS) FIRST USED: 17 L38W

DESCRIPTION: BATTERY INSTL

SHEET: 1 OF 4 ITEM/PART NO: 000180353 / 30129001000 REF: 1 18-Jan-2023

FOR ELECTRICAL TORQUE SPECIFICATIONS SEE DWG NO. 128783-01-000

FOR ELECTRICAL CALLOUTS SEE DWG 000228177 344479-01-000

8 7 6 5 4 3 2 1

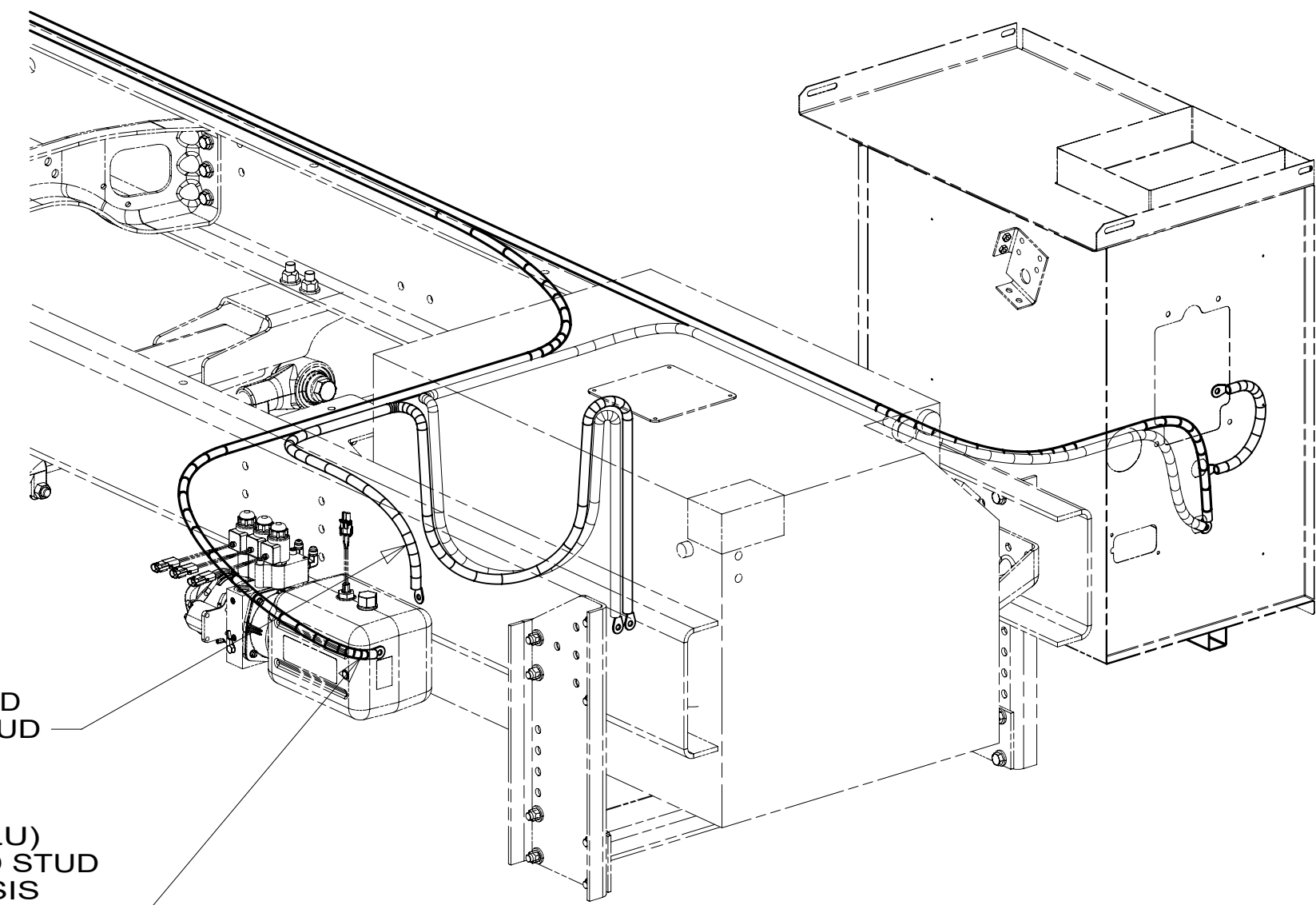
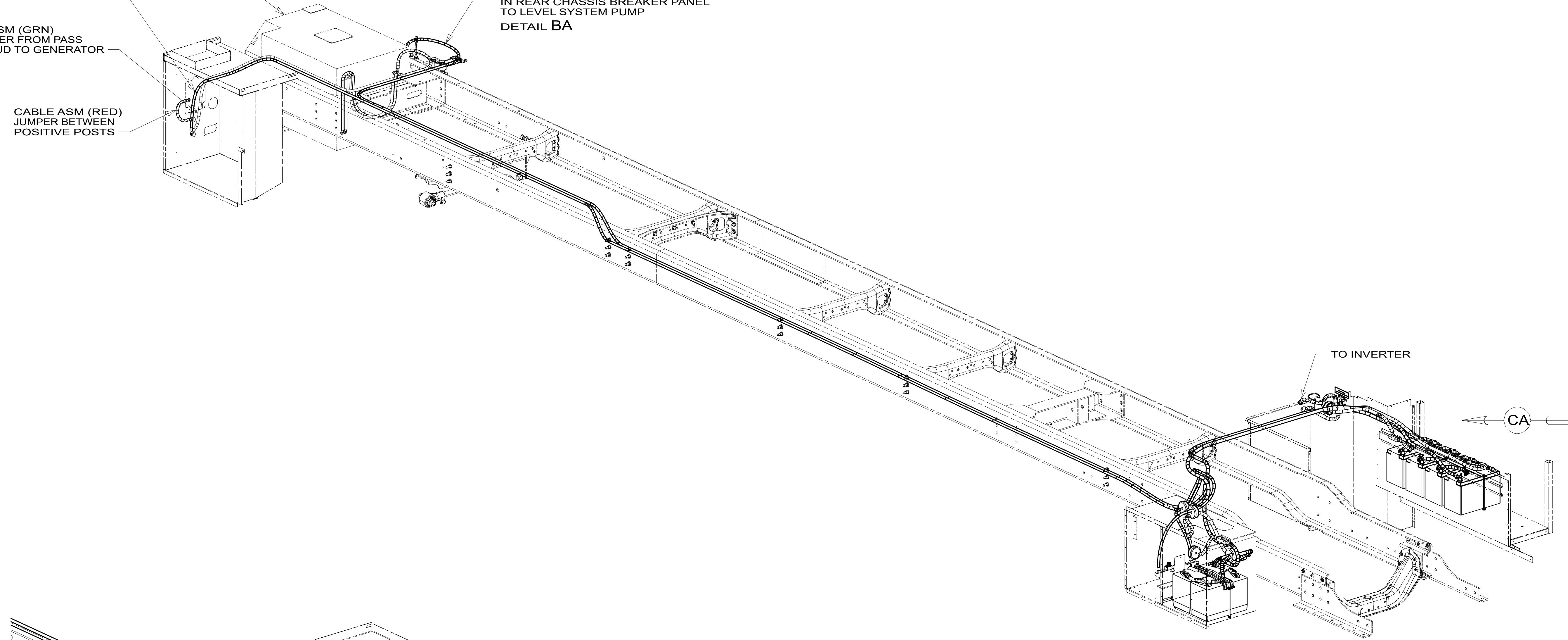
CABLE ASM (GRN)  
FROM COACH BAT DISC  
RELAY TO PASS THRU STUD

GENERATOR  
(REF)

CABLE ASM (BLU)  
FROM ISOLATED STUD  
IN REAR CHASSIS BREAKER PANEL  
TO LEVEL SYSTEM PUMP  
DETAIL BA

CABLE ASM (GRN)  
GENERATOR FROM PASS  
THRU STUD TO GENERATOR

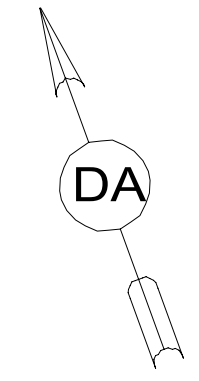
CABLE ASM (RED)  
JUMPER BETWEEN  
POSITIVE POSTS



DETAIL BA

CABLE ASM (BLK)  
GENERATOR GROUND  
FROM GENERATOR GROUND STUD  
TO LEVEL SYSTEM GROUND STUD

CABLE ASM (BLU)  
FROM ISOLATED STUD  
IN REAR CHASSIS  
BREAKER PANEL TO  
LEVEL SYSTEM PUMP



265 CODES/STANDARDS-CSA/CMVSS

1B1 CODES/STANDARDS USA

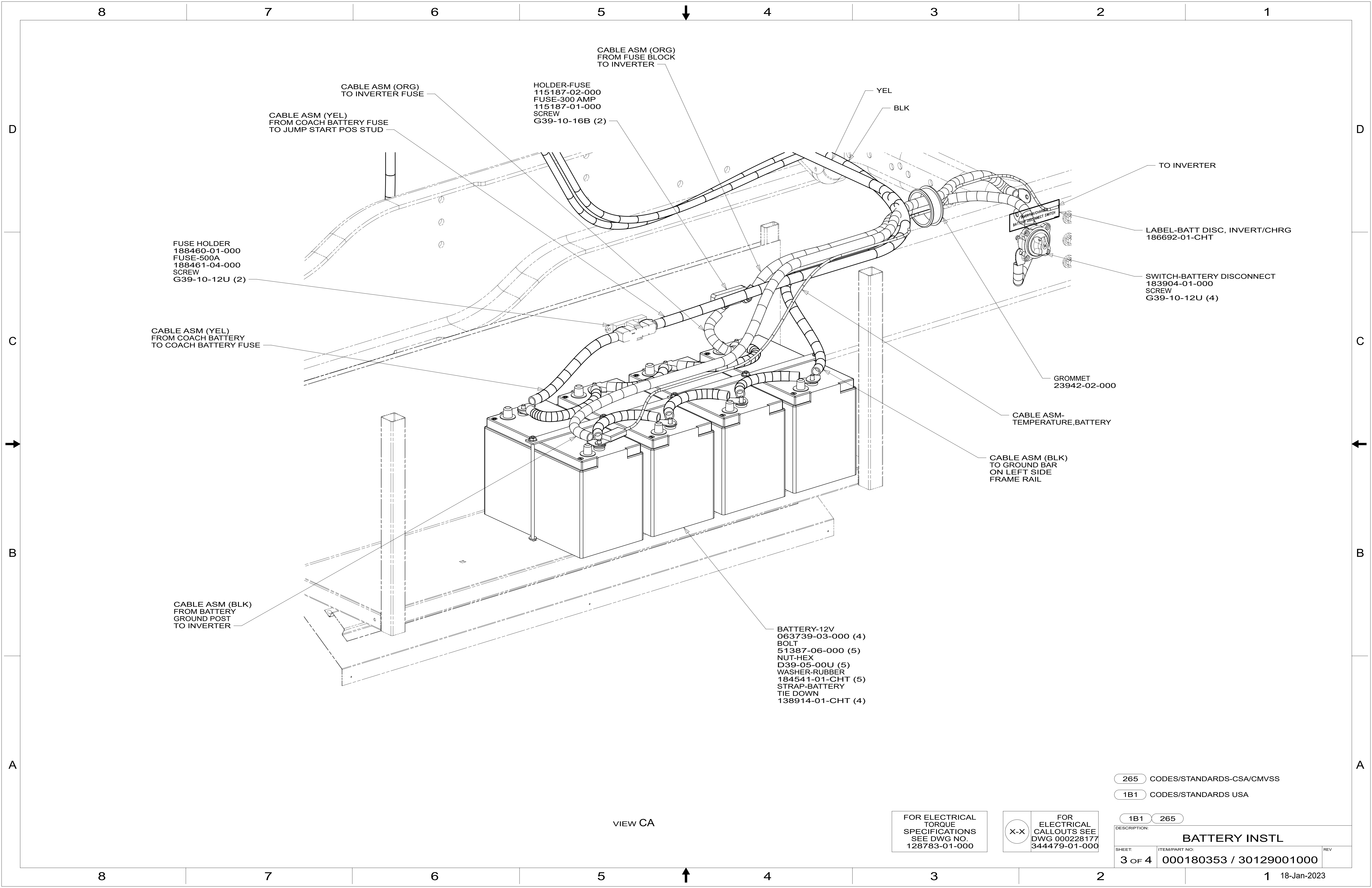
1B1 265

FOR ELECTRICAL  
TORQUE  
SPECIFICATIONS  
SEE DWG NO.  
128783-01-000

FOR  
ELECTRICAL  
CALLOUTS SEE  
DWG 000228177  
344479-01-000

DESCRIPTION: <b>BATTERY INSTL</b>		
SHEET: 2 OF 4	ITEM/PART NO: 000180353 / 30129001000	REV

8 7 6 5 4 3 2 1 18-Jan-2023



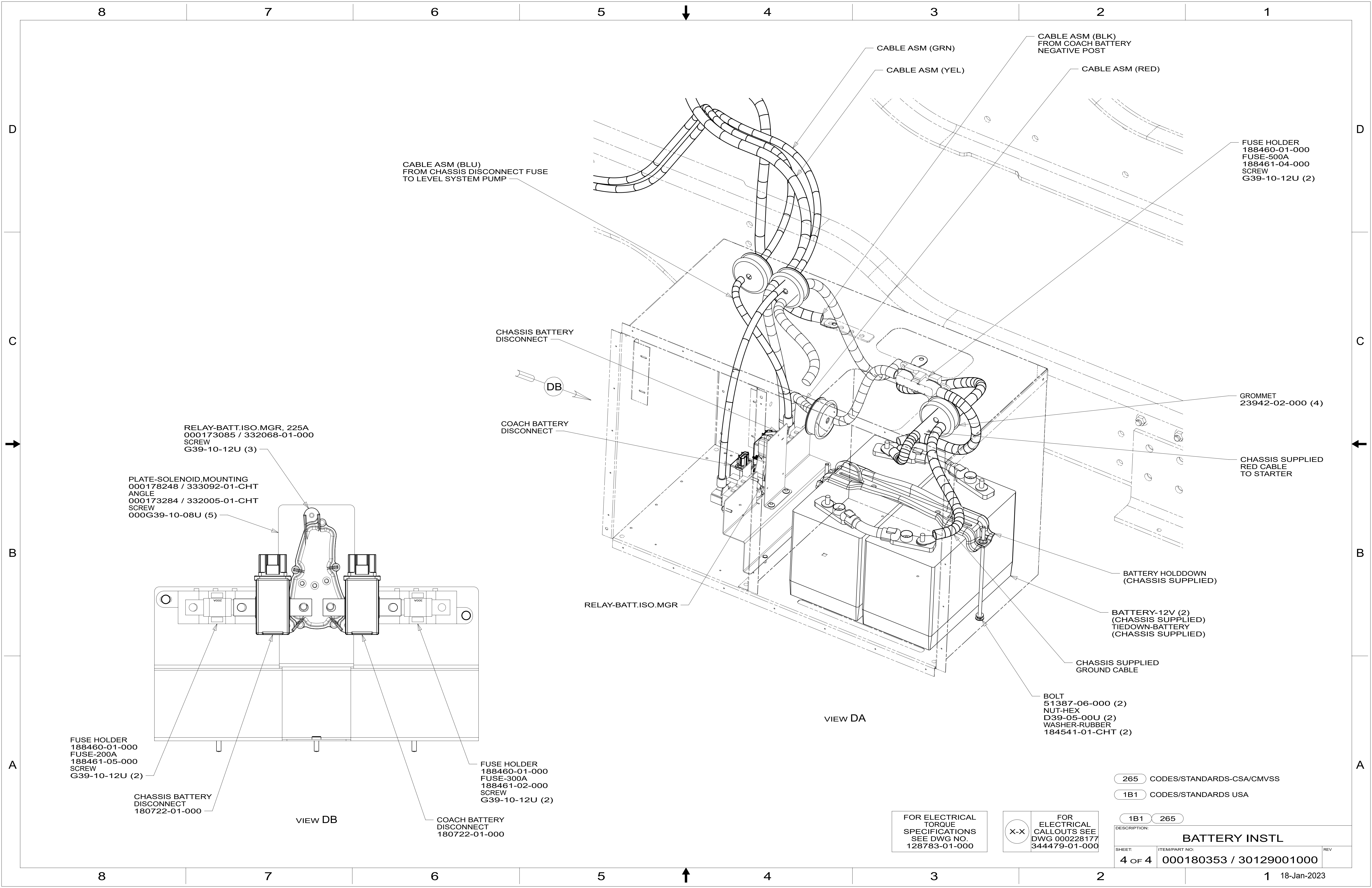
VIEW CA

FOR ELECTRICAL TORQUE SPECIFICATIONS SEE DWG NO. 128783-01-000

FOR ELECTRICAL CALLOUTS SEE DWG 000228177 344479-01-000

- 265 CODES/STANDARDS-CSA/CMVSS
- 1B1 CODES/STANDARDS USA

DESCRIPTION:		1B1	265
<b>BATTERY INSTL</b>			
SHEET:	ITEM/PART NO.:	REV	
3 OF 4	000180353 / 30129001000		



265 CODES/STANDARDS-CSA/CMVSS

1B1 CODES/STANDARDS USA

1B1 265

FOR ELECTRICAL TORQUE SPECIFICATIONS SEE DWG NO. 128783-01-000

FOR ELECTRICAL CALLOUTS SEE DWG 000228177 344479-01-000

DESCRIPTION:		
<b>BATTERY INSTL</b>		
SHEET:	ITEM/PART NO.:	REV:
4 OF 4	000180353 / 30129001000	