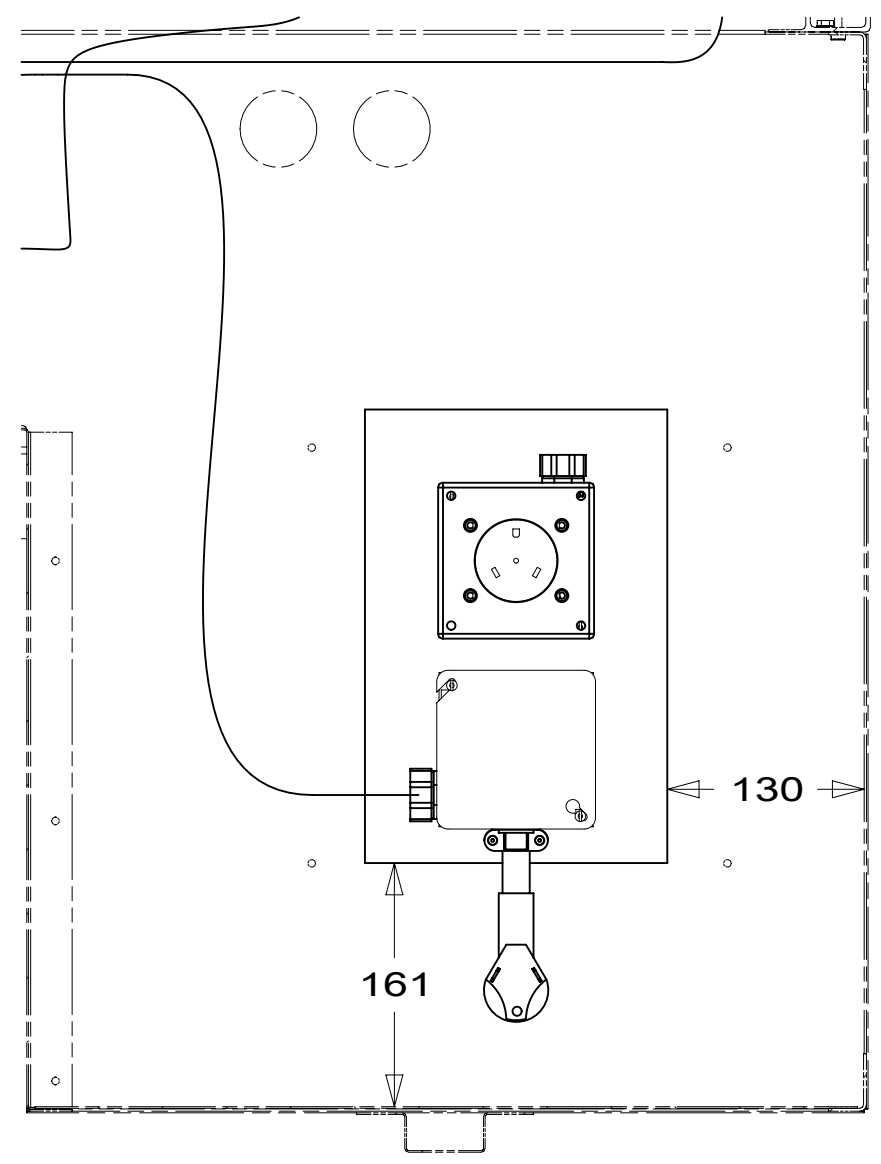


8 7 6 5 4 3 2 1



VIEW AA

POWER CORD BOX ASM  
000159448 / 327642-01-000

THROW IN #4 (BRN-2) 4300 DROP  
THRU RCP-FRONT NIGHTSTAND  
TO RCP-REAR NIGHTSTAND

THROW IN #1  
FROM RCP-BLANK WARDROBE  
TO RCP-EXTERIOR COMPARTMENT

110V CONNECTORS  
(BRN-2,BLK,BLU)  
DETAIL DB

THROW IN WIRE #4  
(TO EXT ENT CTR) 1DF 3

RCP-2 (BLU)  
EXT COMPT

(BLU) FROM LOAD CENTER  
THRU RCP-GFI GALLEY  
THRU RCP-BLANK WARDROBE  
TO 110V CONNECTORS  
(BLK) FROM LOAD CENTER  
TO 110V CONNECTORS  
THROW IN #3 (BRN-2) FROM  
RCP-BLANK WARDROBE  
TO 110V CONNECTORS

AA

3

1DF 3

1DF EXT TV ENTERTAINMENT CENTER

265 CODES/STANDARDS-CSA/CMVSS

1B1 CODES/STANDARDS USA

1B1 265



DSNR:	ALL DIMENSIONS ARE IN MILLIMETERS	
DIFFR:	MATERIAL:	
UNSPECIFIED TOLERANCES:		
WHOLE DIM (X)	: 3	
ONE-PLACE (X.X)	: 1.5	
TWO-PLACE (X.XX)	: 0.50	
ANGLE	: 1°	
REFER TO ES0018 FOR FASTENER TIGHTENING GUIDELINES	WEIGHT: (LBS)	FIRST USED:
		18 E27PE

**WIRING INSTL-BODY, 110V**

SHEET:	ITEM/PART NO.:	REV:
1 OF 7	000152864 / 32593001000	

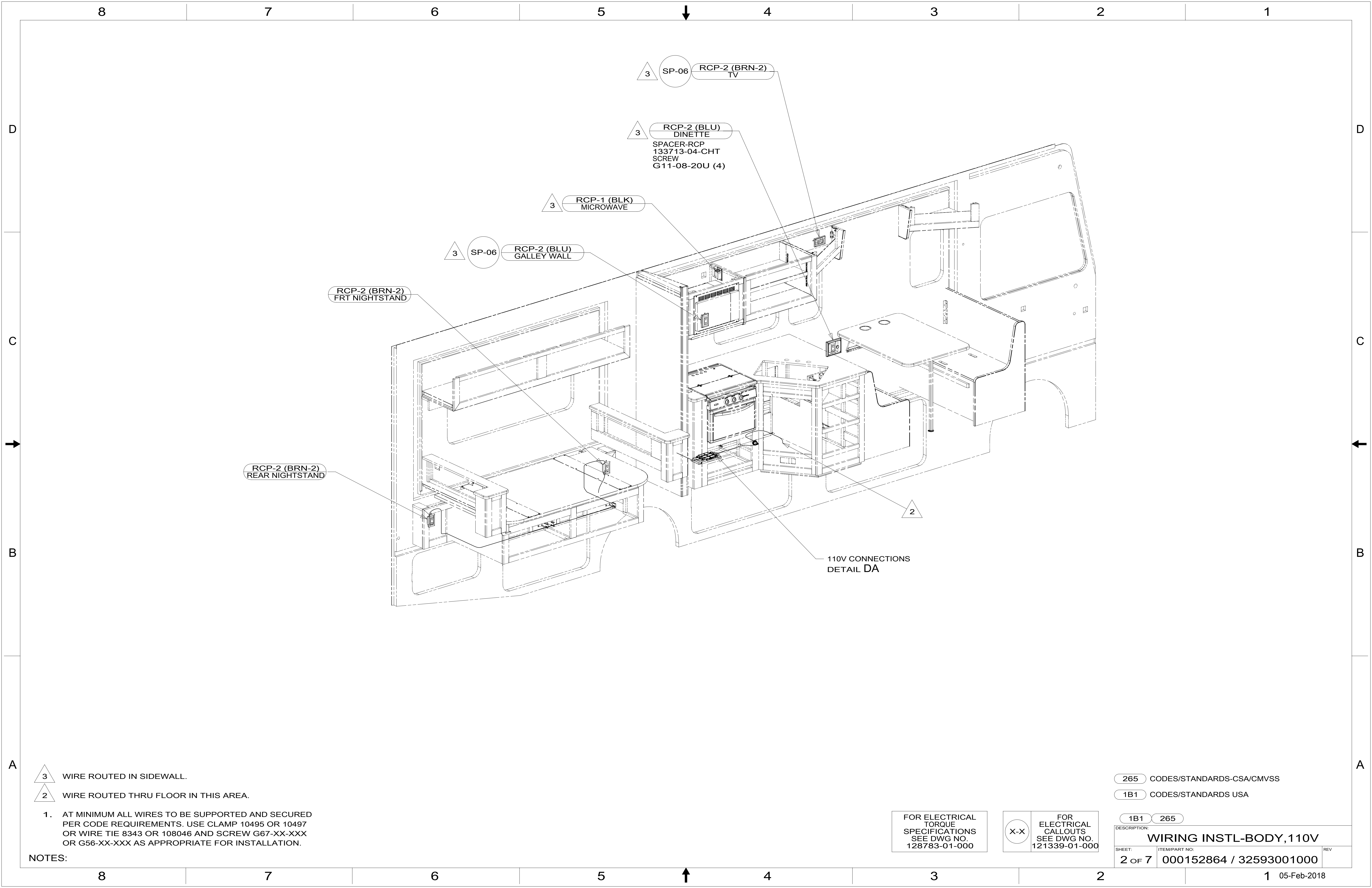
REF: 1 05-Feb-2018

- NOTES:
- 1. WIRES ROUTED UNDER FLOOR.
  - 2. AT MINIMUM ALL WIRES TO BE SUPPORTED AND SECURED PER CODE REQUIREMENTS. USE CLAMP 10495 OR 10497 OR WIRE TIE 8343 OR 108046 AND SCREW G67-XX-XXX OR G56-XX-XXX AS APPROPRIATE FOR INSTALLATION.

FOR ELECTRICAL TORQUE SPECIFICATIONS SEE DWG NO. 128783-01-000

FOR ELECTRICAL CALLOUTS SEE DWG NO. 121339-01-000

8 7 6 5 4 3 2 1



3 WIRE ROUTED IN SIDEWALL.

2 WIRE ROUTED THRU FLOOR IN THIS AREA.

1. AT MINIMUM ALL WIRES TO BE SUPPORTED AND SECURED PER CODE REQUIREMENTS. USE CLAMP 10495 OR 10497 OR WIRE TIE 8343 OR 108046 AND SCREW G67-XX-XXX OR G56-XX-XXX AS APPROPRIATE FOR INSTALLATION.

NOTES:

265 CODES/STANDARDS-CSA/CMVSS

1B1 CODES/STANDARDS USA

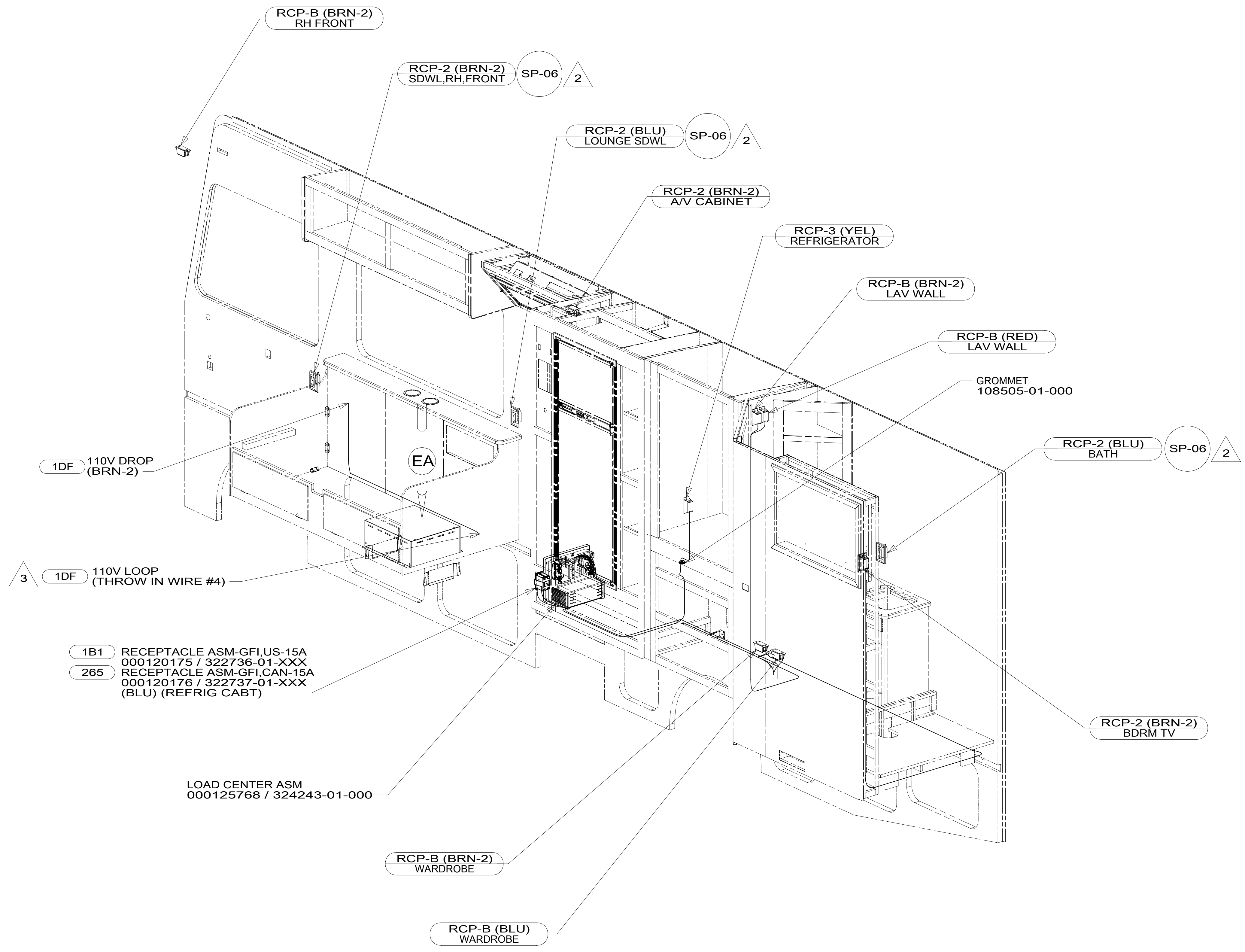
1B1 265

FOR ELECTRICAL TORQUE SPECIFICATIONS SEE DWG NO. 128783-01-000

FOR ELECTRICAL CALLOUTS SEE DWG NO. 121339-01-000

DESCRIPTION:  
**WIRING INSTL-BODY, 110V**

SHEET:	ITEM/PART NO.:	REV
2 OF 7	000152864 / 32593001000	



- 3 ROUTE WIRE UNDER FLOOR TO THE RCP BLANK UNDER THE WARDROBE.
- 2 WIRE ROUTED IN SIDEWALL.
1. AT MINIMUM ALL WIRES TO BE SUPPORTED AND SECURED PER CODE REQUIREMENTS. USE CLAMP 10495 OR 10497 OR WIRE TIE 8343 OR 108046 AND SCREW G67-XX-XXX OR G56-XX-XXX AS APPROPRIATE FOR INSTALLATION.

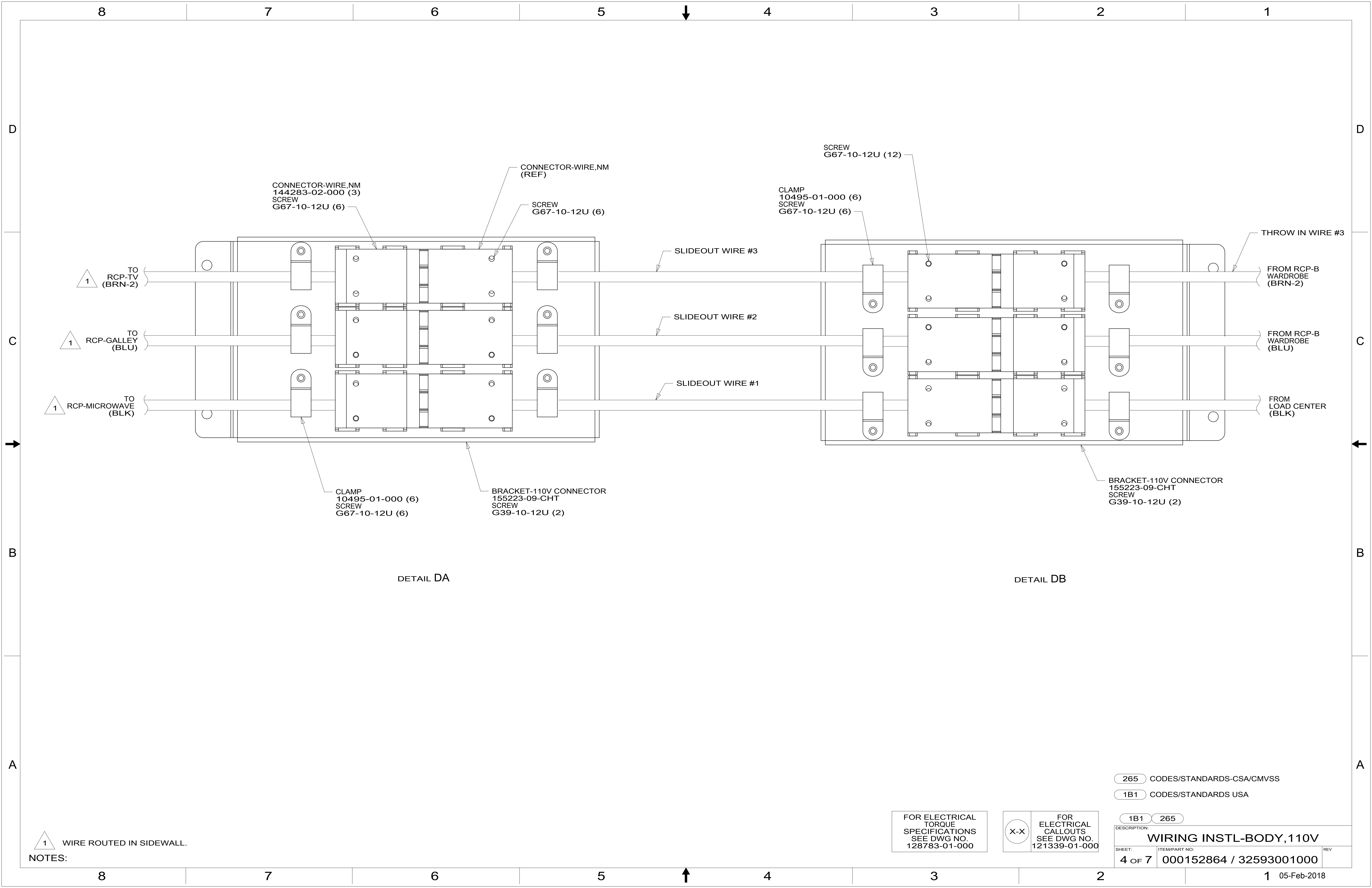
NOTES:

- 1DF EXT TV ENTERTAINMENT CENTER
- 265 CODES/STANDARDS-CSA/CMVSS
- 1B1 CODES/STANDARDS USA

FOR ELECTRICAL TORQUE SPECIFICATIONS SEE DWG NO. 128783-01-000

FOR ELECTRICAL CALLOUTS SEE DWG NO. 121339-01-000

DESCRIPTION:	
1B1 265	
WIRING INSTL-BODY, 110V	
SHEET:	ITEM/PART NO:
3 OF 7	000152864 / 32593001000
REV	



CONNECTOR-WIRE,NM  
144283-02-000 (3)  
SCREW  
G67-10-12U (6)

CONNECTOR-WIRE,NM  
(REF)

SCREW  
G67-10-12U (6)

CLAMP  
10495-01-000 (6)  
SCREW  
G67-10-12U (6)

SCREW  
G67-10-12U (12)

THROW IN WIRE #3

FROM RCP-B  
WARDROBE  
(BRN-2)

FROM RCP-B  
WARDROBE  
(BLU)

FROM LOAD CENTER  
(BLK)

SLIDEOUT WIRE #3

SLIDEOUT WIRE #2

SLIDEOUT WIRE #1

CLAMP  
10495-01-000 (6)  
SCREW  
G67-10-12U (6)

BRACKET-110V CONNECTOR  
155223-09-CHT  
SCREW  
G39-10-12U (2)

BRACKET-110V CONNECTOR  
155223-09-CHT  
SCREW  
G39-10-12U (2)

DETAIL DA

DETAIL DB

1 WIRE ROUTED IN SIDEWALL.  
NOTES:

FOR ELECTRICAL  
TORQUE  
SPECIFICATIONS  
SEE DWG NO.  
128783-01-000

X-X  
FOR ELECTRICAL  
CALLOUTS  
SEE DWG NO.  
121339-01-000

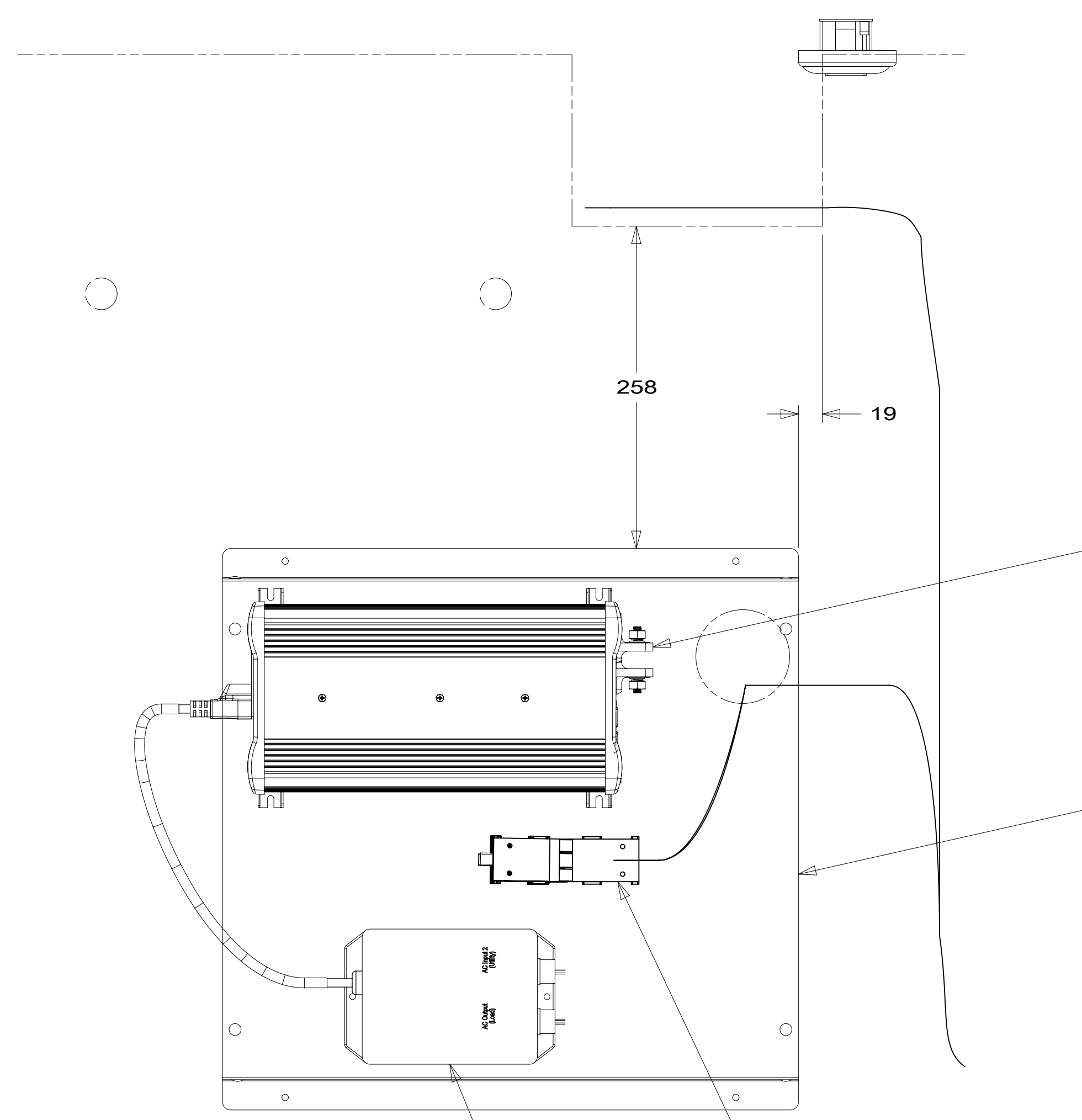
- 265 CODES/STANDARDS-CSA/CMVSS
- 1B1 CODES/STANDARDS USA

DESCRIPTION: <b>WIRING INSTL-BODY, 110V</b>	
SHEET: 4 OF 7	ITEM/PART NO: 000152864 / 32593001000
REV	

8 7 6 5 4 3 2 1

D  
C  
B  
A

D  
C  
B  
A



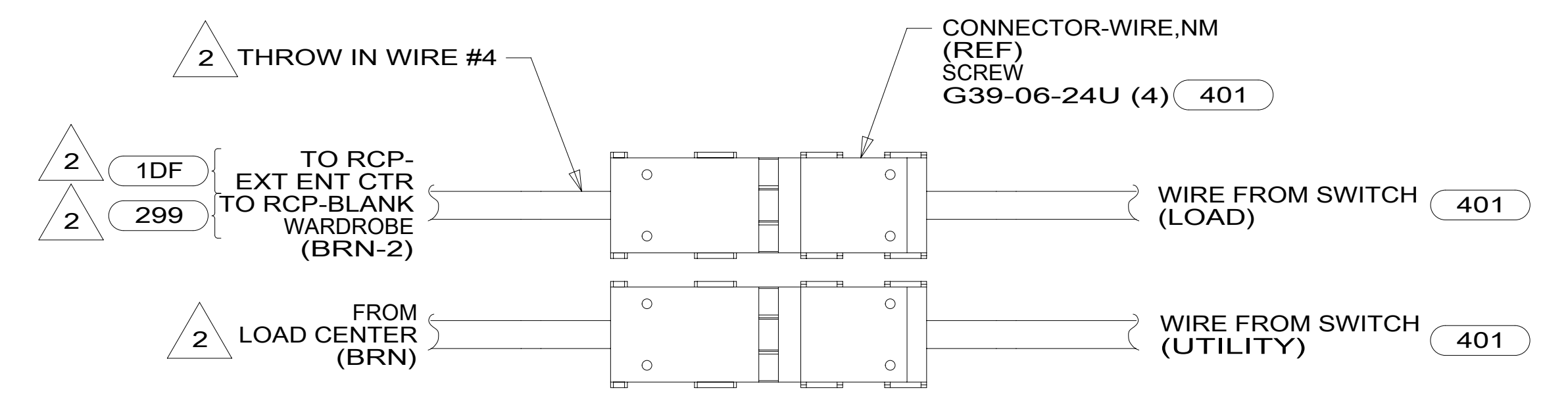
INVERTER-1000W, NO TRANSFER  
000033749 / 318692-01-000  
SCREW  
G67-10-12U (4) } 401

COVER ASM-INVERTER  
000046432 / 321279-01-CHT  
SCREW  
G67-08-12U (4) } 401

110V CONNECTIONS  
DETAIL EB  
(CONNECTORS ARE STACKED)

SWITCH-TRANSFER,  
INVERTER, 15 AMP  
000033766 / 318693-01-000  
SCREW  
G67-10-12U (2) } 401

DETAIL EA



DETAIL EB  
(STACKED CONNECTORS SHOWN  
SEPERATE FOR CLARITY)

- 299 ENTERTAINMENT CENTER EXT.W/O
- 1DF EXT TV ENTERTAINMENT CENTER
- 401 INVERTER-DC/AC, 1000 WATT
- 265 CODES/STANDARDS-CSA/CMVSS
- 1B1 CODES/STANDARDS USA

2 WITHOUT INVERTER, THROW IN WIRE #4 (BRN-2) CONNECTS TO (BRN) FROM LOAD CENTER.

1. IF NO INVERTER, SECURE CONNECTORS BELOW FLOOR IN COMPARTMENT.

NOTES:

FOR ELECTRICAL  
TORQUE  
SPECIFICATIONS  
SEE DWG NO.  
128783-01-000

FOR  
ELECTRICAL  
CALLOUTS  
SEE DWG NO.  
121339-01-000

DESCRIPTION: <b>WIRING INSTL-BODY, 110V</b>	
SHEET: 5 OF 7	ITEM/PART NO: 000152864 / 32593001000
REV	05-Feb-2018

8 7 6 5 4 3 2 1

8 7 6 5 4 3 2 1

D

D

C

C

B

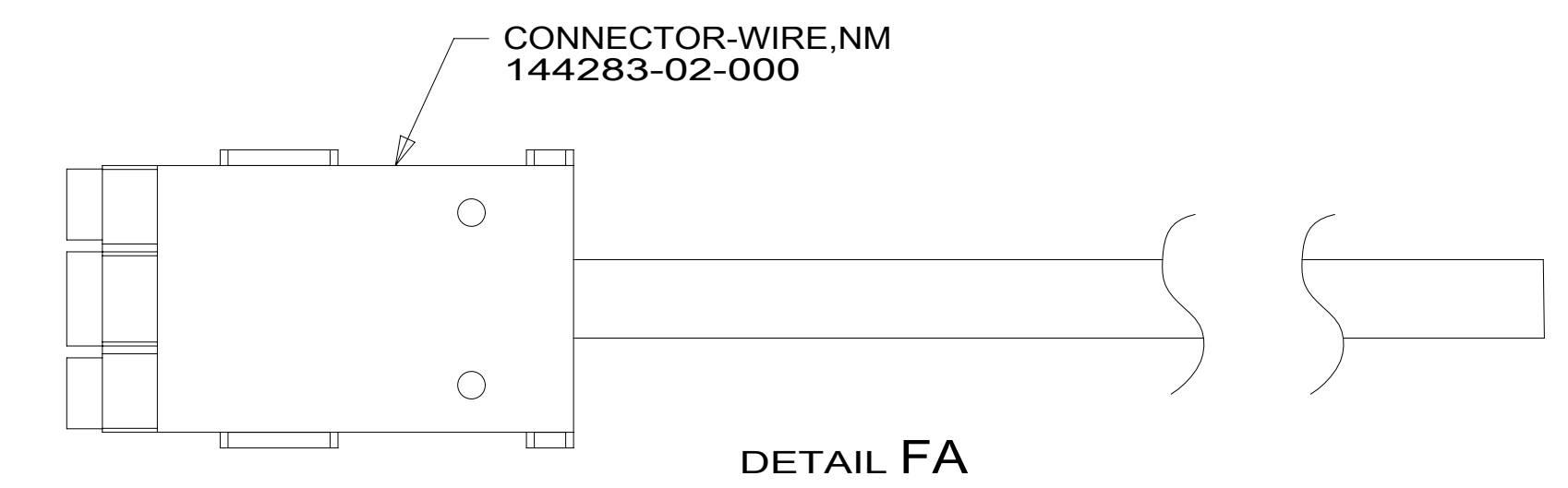
B

A

A

RED	1B1	136135-07-056	
	265	136136-07-056	
YEL	1B1	136131-05-030	
	265	136134-05-030	
BRN	1B1	136131-03-035	
	265	136134-03-035	
BLU	1B1	136131-02-090	2
	265	136134-02-090	2
MAIN	1B1	136137-01-071	4
	265	136138-01-071	4
BLK	1B1	136131-06-071	2
	265	136134-06-071	2
SLIDEOUT WIRE #1		136151-06-023	3
SLIDEOUT WIRE #2		136151-02-023	3
SLIDEOUT WIRE #3		136151-19-023	3
GROUND MAIN		178545-01-025	

THROW IN WIRE #1	1B1	136131-02-050	
	265	136134-02-050	
THROW IN WIRE #2	1B1	136131-19-050	
	265	136134-19-050	
THROW IN WIRE #3	1B1	136131-19-048	2
	265	136134-19-048	2
THROW IN WIRE #4	1B1	136131-19-235	2
	265	136134-19-235	2



- NOTES:
- 4 ATTACH ONE END OF MAIN TO LAD CENTER. COVER OTHER END OF MAIN CABLE ASM WITH 2000 MM OF CONDUIT 091234-02-000. SECURE WITH TAPE 8363-01-000.
  - 3 SEE DETAIL **FB** FOR CONNECTOR INSTALLATION.
  - 2 SEE DETAIL **FA** FOR CONNECTOR INSTALLATION.
  - 1. ALL GROUNDS WIRES TO BE COVERED WITH TUBING 8041-02-000.

265 CODES/STANDARDS-CSA/CMVSS  
 1B1 CODES/STANDARDS USA

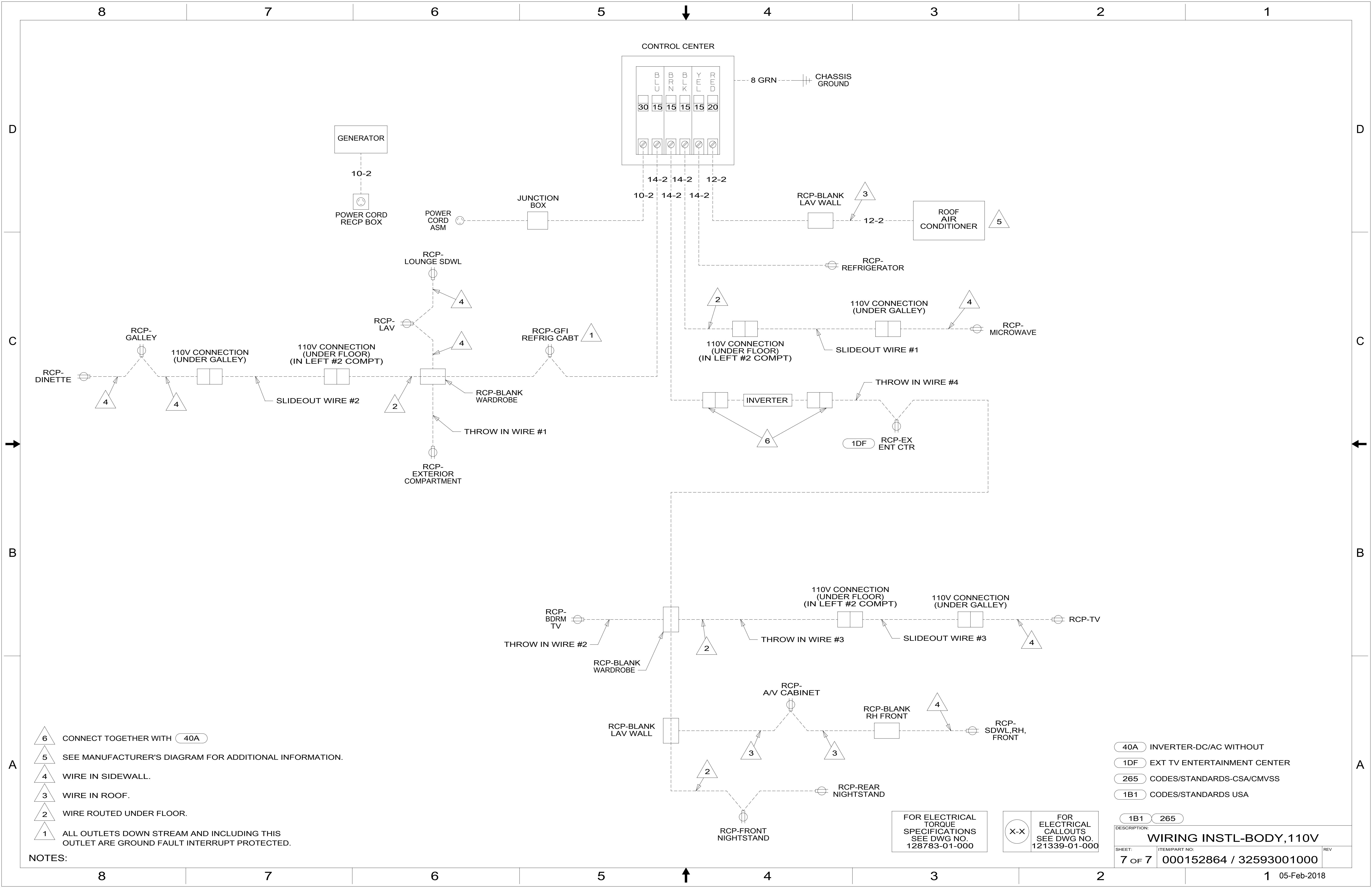
FOR ELECTRICAL TORQUE SPECIFICATIONS SEE DWG NO. 128783-01-000

FOR ELECTRICAL CALLOUTS SEE DWG NO. 121339-01-000

DESCRIPTION: 1B1 265  
**WIRING INSTL-BODY, 110V**

SHEET: 6 OF 7 ITEM/PART NO: 000152864 / 32593001000 REV

8 7 6 5 4 3 2 1 05-Feb-2018



- NOTES:
- 6 CONNECT TOGETHER WITH 40A
  - 5 SEE MANUFACTURER'S DIAGRAM FOR ADDITIONAL INFORMATION.
  - 4 WIRE IN SIDEWALL.
  - 3 WIRE IN ROOF.
  - 2 WIRE ROUTED UNDER FLOOR.
  - 1 ALL OUTLETS DOWN STREAM AND INCLUDING THIS OUTLET ARE GROUND FAULT INTERRUPT PROTECTED.

- 40A INVERTER-DC/AC WITHOUT
- 1DF EXT TV ENTERTAINMENT CENTER
- 265 CODES/STANDARDS-CSA/CMVSS
- 1B1 CODES/STANDARDS USA

FOR ELECTRICAL TORQUE SPECIFICATIONS SEE DWG NO. 128783-01-000

FOR ELECTRICAL CALLOUTS SEE DWG NO. 121339-01-000

DESCRIPTION: <b>WIRING INSTL-BODY, 110V</b>		
SHEET: 7 OF 7	ITEM/PART NO: 000152864 / 32593001000	REV