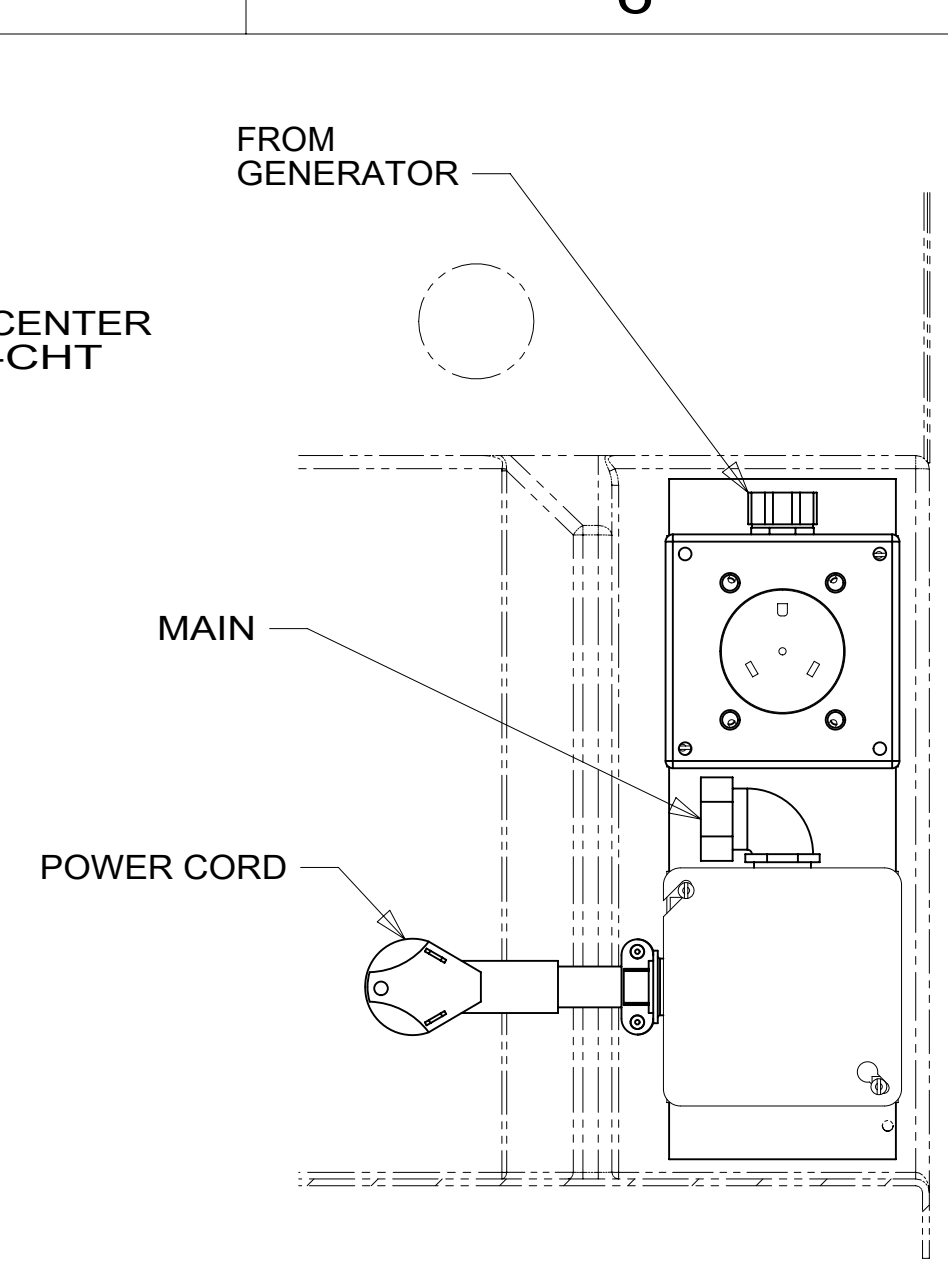
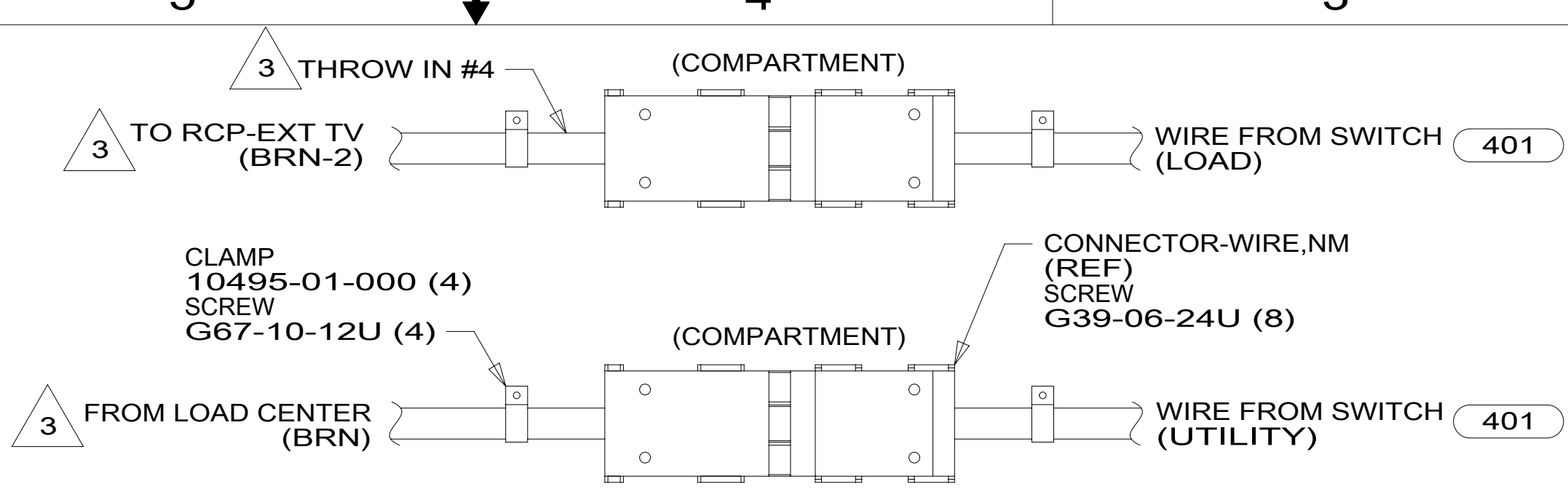


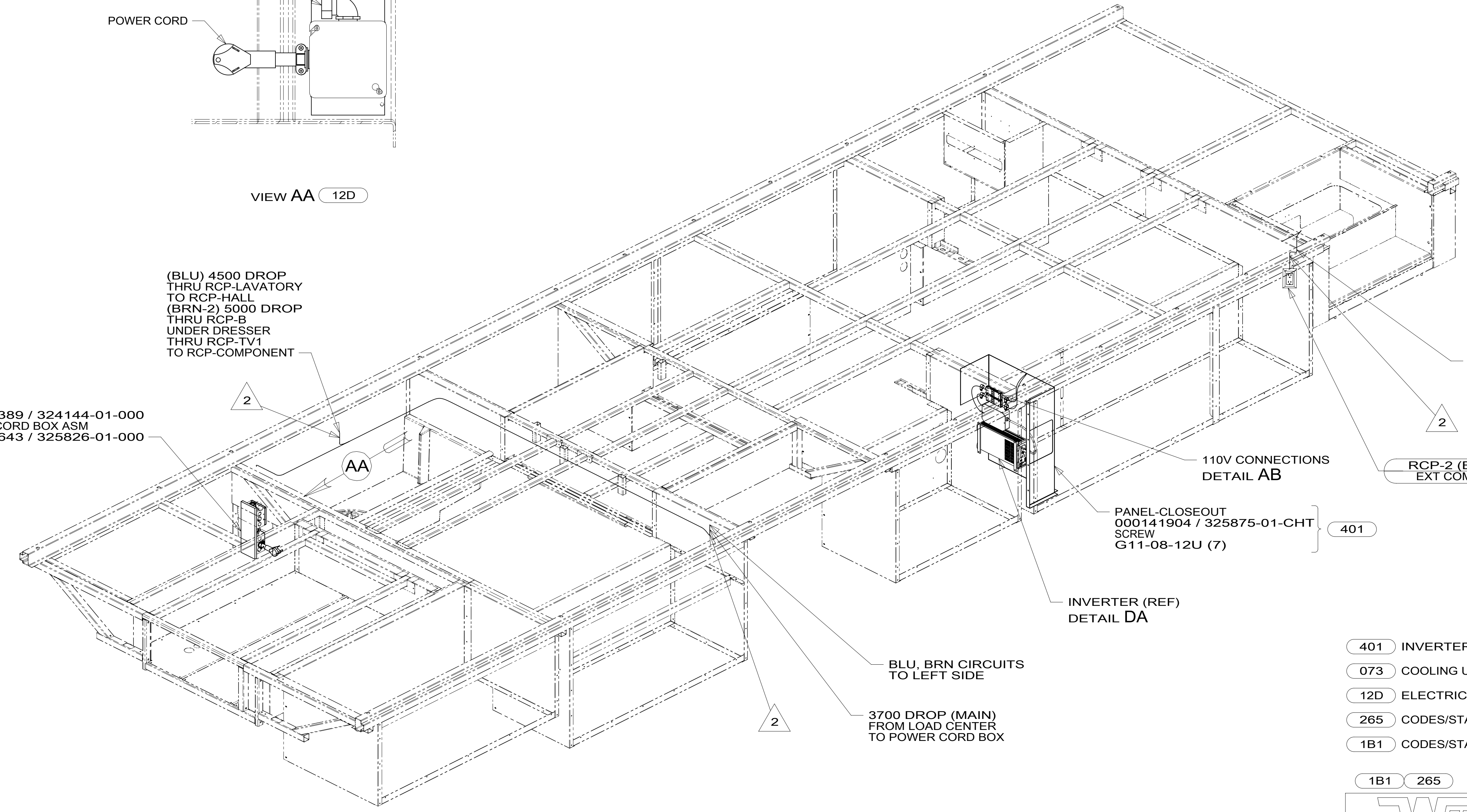
VIEW AA 073



VIEW AA 12D



DETAIL AB



- 073 ATS ASM
000125389 / 324144-01-000
- 12D POWER CORD BOX ASM
000140643 / 325826-01-000

- 401 INVERTER-DC/AC, 1000 WATT
- 073 COOLING UPGRADE PACKAGE
- 12D ELECTRICAL SYSTEM 30 AMP
- 265 CODES/STANDARDS-CSA/CMVSS
- 1B1 CODES/STANDARDS USA

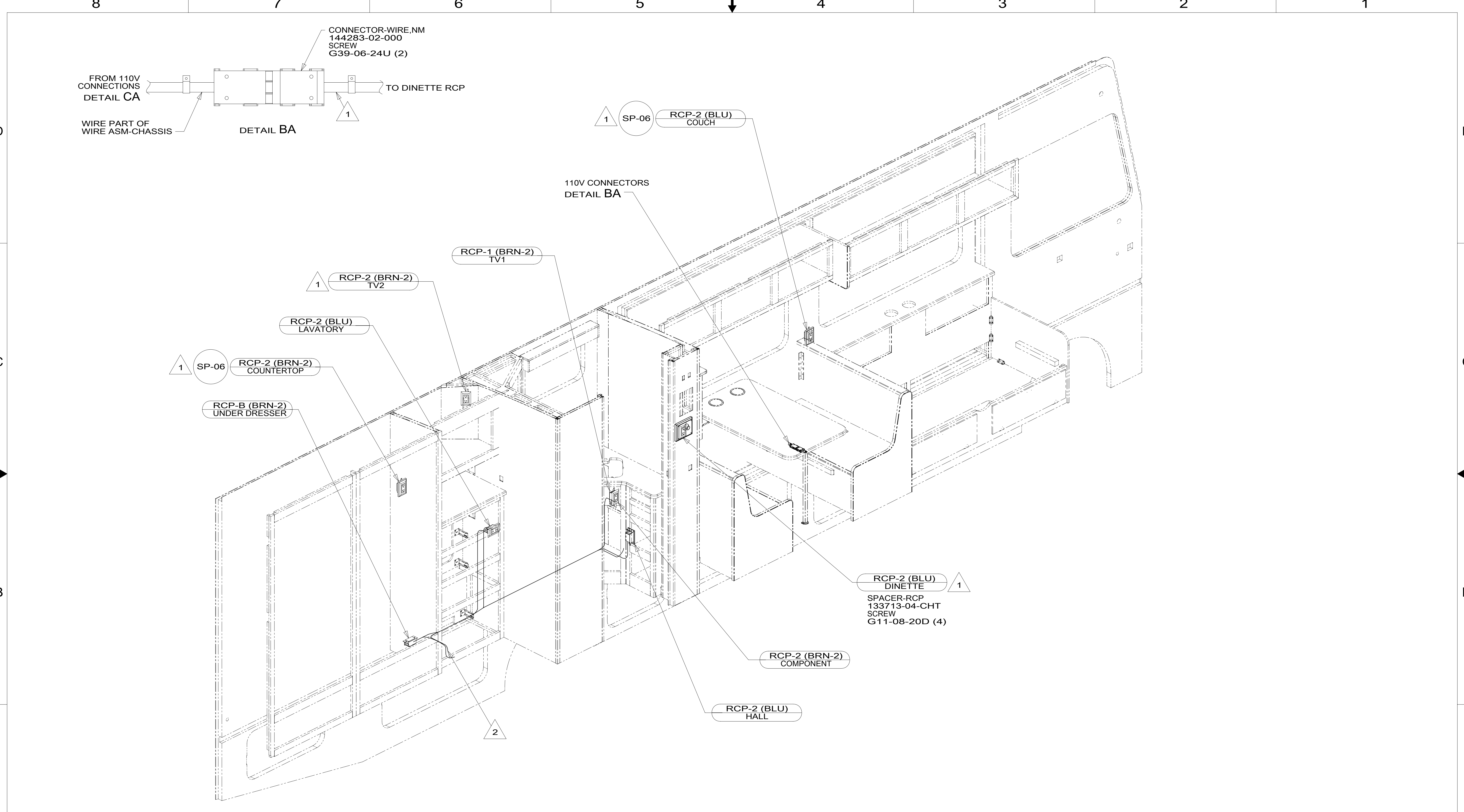
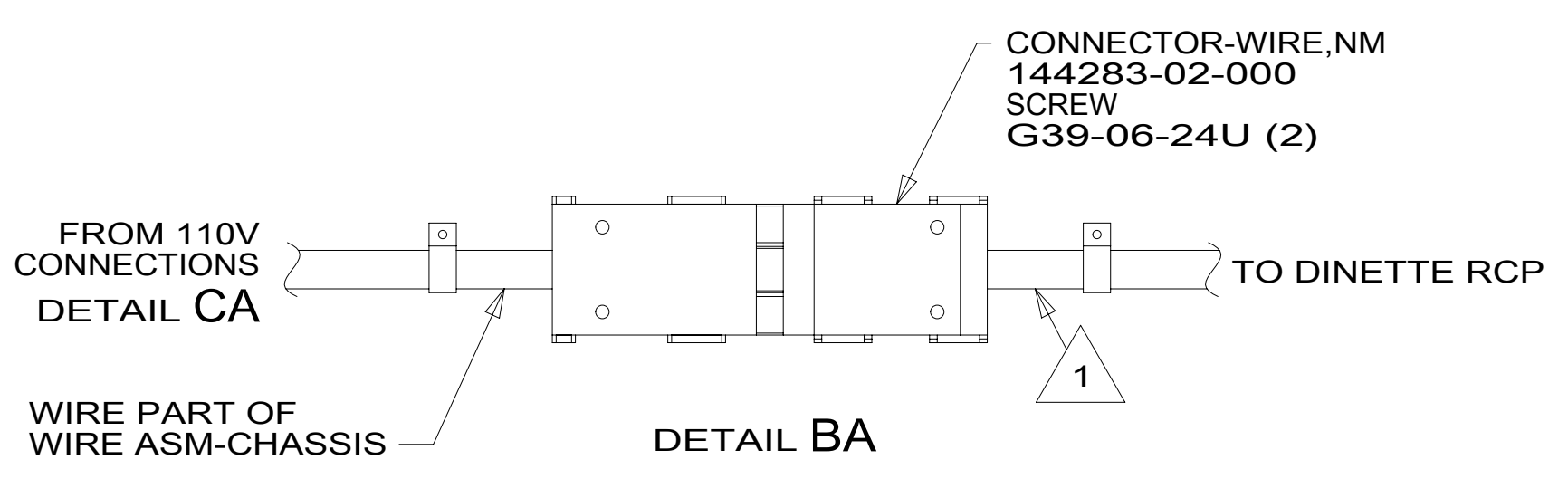
WINNEBAGO
COPYRIGHT 2016 WINNEBAGO INDUSTRIES, INC.

DSNR:	ALL DIMENSIONS ARE IN MILLIMETERS
DFFR:	MATERIAL:
UNSPECIFIED TOLERANCES:	WEIGHT: (LBS)
WHOLE DIM (X) : 3	FIRST USED:
ONE-PLACE (X.X) : 1.5	18 E32YE
TWO-PLACE (X.XX) : 0.50	
ANGLE : 1°	
REFER TO ES0018 FOR FASTENER TIGHTENING GUIDELINES	
DESCRIPTION:	
WIRING INSTL-BODY, 110V	
SHEET: 1 OF 7	ITEM/PART NO: 000131233 / 32567401000
REF:	1 12-Jan-2018

4. AT MINIMUM ALL WIRES TO BE SUPPORTED AND SECURED PER CODE REQUIREMENTS. USE CLAMP 10495 OR 10497 OR WIRE TIE 8343 OR 108046 AND SCREW G67-XX-XXX OR G56-XX-XXX AS APPROPRIATE FOR INSTALLATION.
- 3 WITHOUT INVERTER, THROW IN WIRE #4 (BRN-2) CONNECTS TO (BRN) FROM LOAD CENTER.
- 2 WIRE ROUTES THROUGH FLOOR IN THIS AREA.
- 1 WIRES ROUTED UNDER FLOOR.
- NOTES:

FOR ELECTRICAL TORQUE SPECIFICATIONS SEE DWG NO. 128783-01-000

FOR ELECTRICAL CALLOUTS SEE DWG NO. 121339-01-000



3. AT MINIMUM ALL WIRES TO BE SUPPORTED AND SECURED PER CODE REQUIREMENTS. USE CLAMP 10495 OR 10497 OR WIRE TIE 8343 OR 108046 AND SCREW G67-XX-XXX OR G56-XX-XXX AS APPROPRIATE FOR INSTALLATION.

- 2 WIRE ROUTED THRU FLOOR IN THIS AREA.
- 1 WIRE ROUTED IN SIDEWALL.

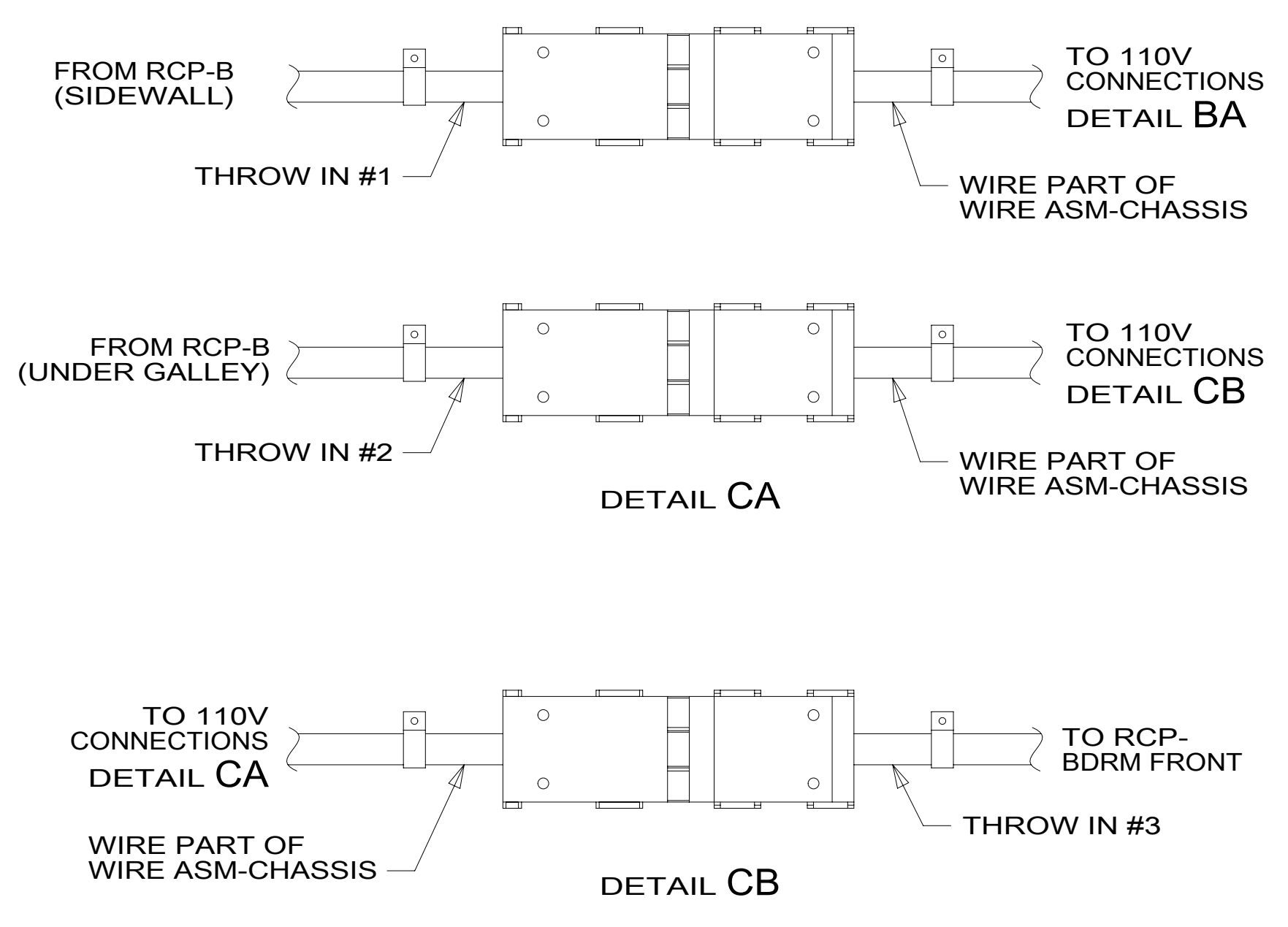
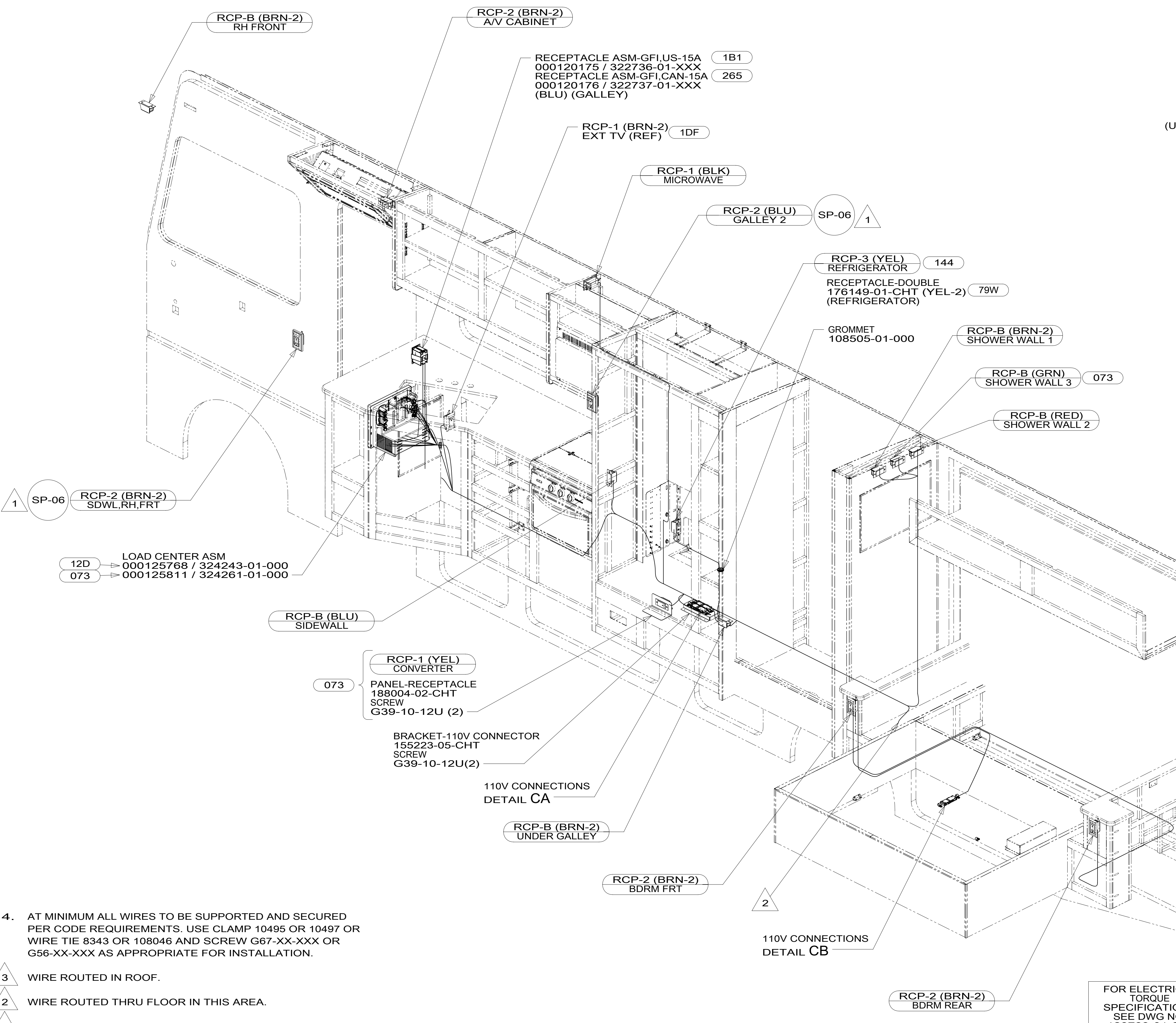
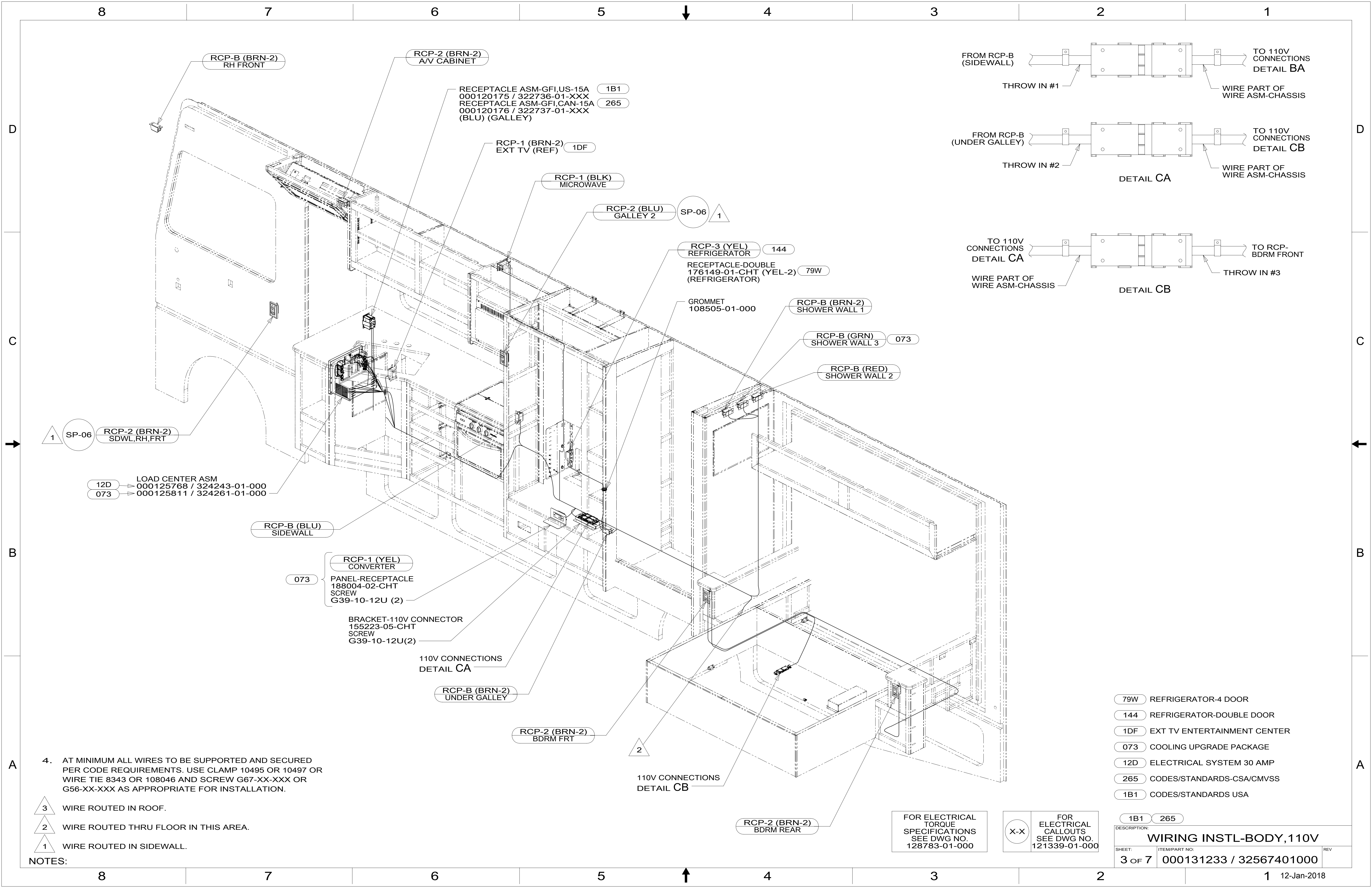
NOTES:

265 CODES/STANDARDS-CSA/CMVSS
 1B1 CODES/STANDARDS USA

FOR ELECTRICAL TORQUE SPECIFICATIONS SEE DWG NO. 128783-01-000

FOR ELECTRICAL CALLOUTS SEE DWG NO. 121339-01-000

DESCRIPTION:	
WIRING INSTL-BODY, 110V	
SHEET:	ITEM/PART NO. REV
2 OF 7	000131233 / 32567401000



NOTES:

4. AT MINIMUM ALL WIRES TO BE SUPPORTED AND SECURED PER CODE REQUIREMENTS. USE CLAMP 10495 OR 10497 OR WIRE TIE 8343 OR 108046 AND SCREW G67-XX-XXX OR G56-XX-XXX AS APPROPRIATE FOR INSTALLATION.

3 WIRE ROUTED IN ROOF.

2 WIRE ROUTED THRU FLOOR IN THIS AREA.

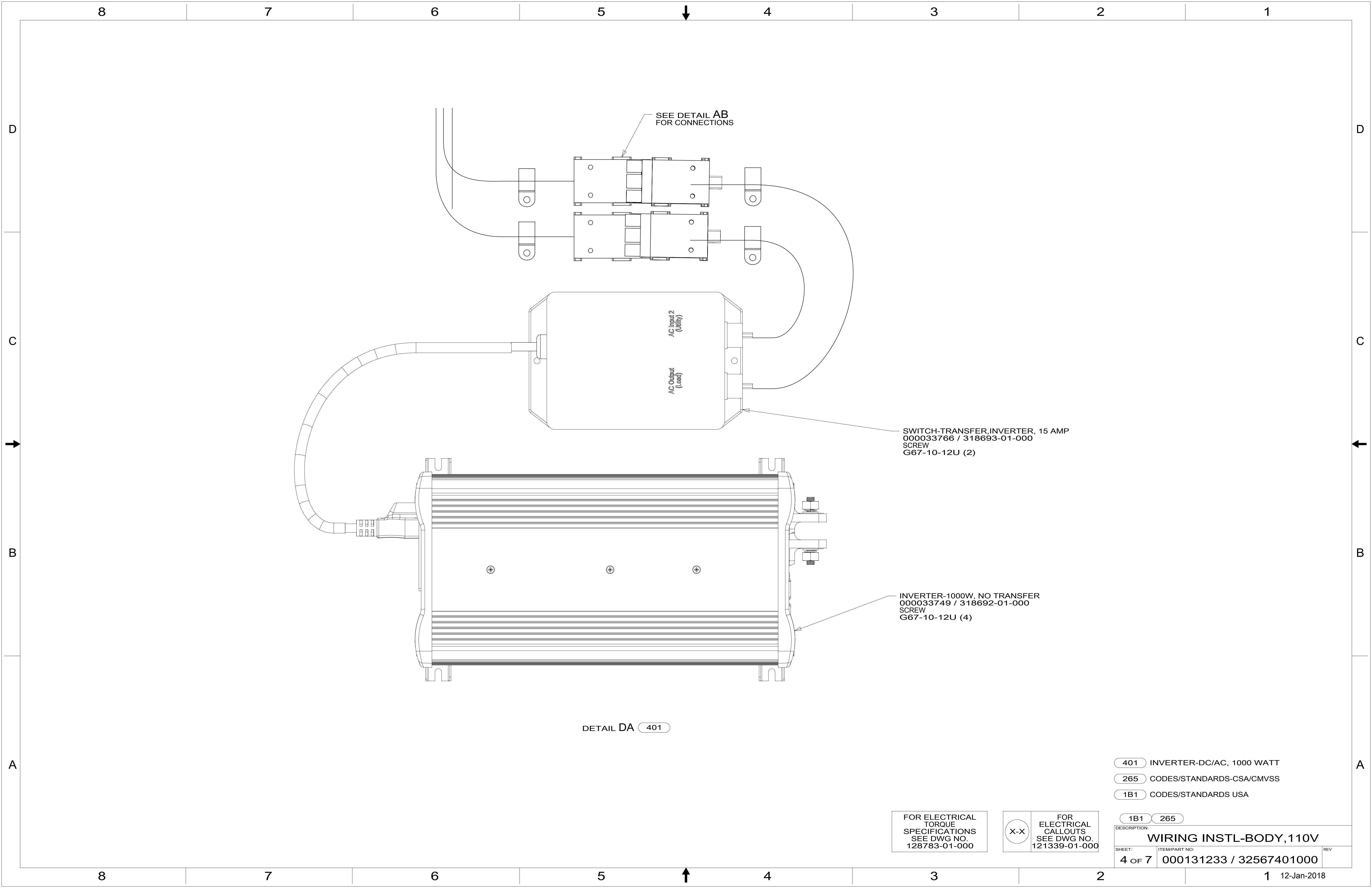
1 WIRE ROUTED IN SIDEWALL.

- (79W) REFRIGERATOR-4 DOOR
- (144) REFRIGERATOR-DOUBLE DOOR
- (1DF) EXT TV ENTERTAINMENT CENTER
- (073) COOLING UPGRADE PACKAGE
- (12D) ELECTRICAL SYSTEM 30 AMP
- (265) CODES/STANDARDS-CSA/CMVSS
- (1B1) CODES/STANDARDS USA

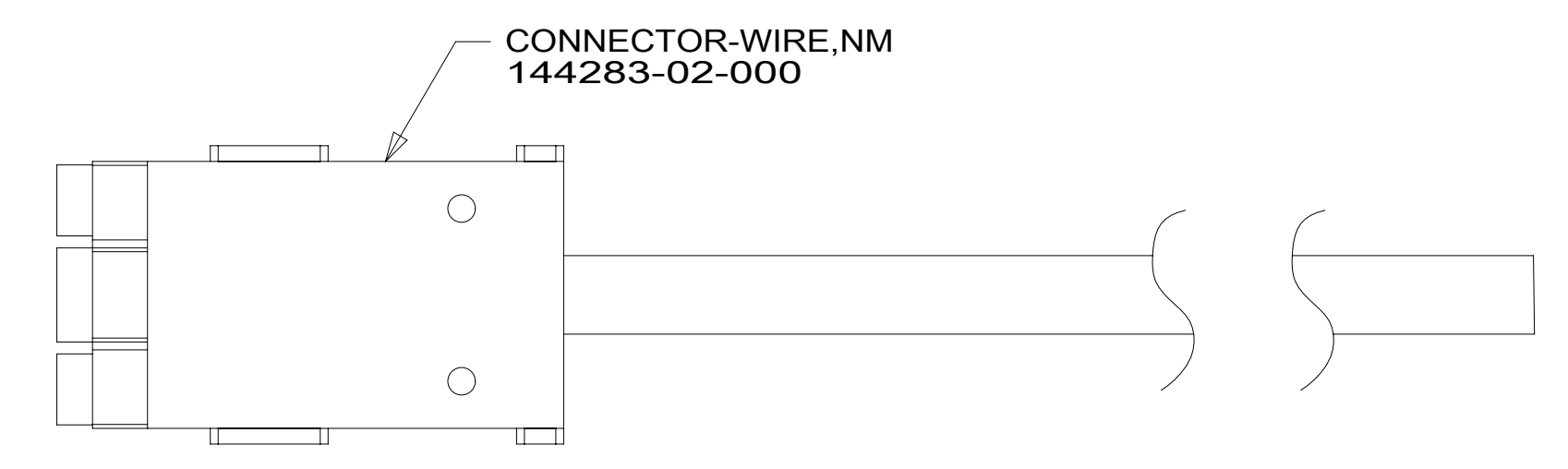
FOR ELECTRICAL TORQUE SPECIFICATIONS SEE DWG NO. 128783-01-000

FOR ELECTRICAL CALLOUTS SEE DWG NO. 121339-01-000

DESCRIPTION:		1B1 265	
WIRING INSTL-BODY, 110V			
SHEET:	ITEM/PART NO.:	REV:	
3 OF 7	000131233 / 32567401000		



RED	1B1	136135-07-080	
	265	136136-07-080	
YEL	1B1	136131-05-051	12D
	265	136134-05-051	12D
YEL	1B1	136131-05-042	073
	265	136134-05-042	073
YEL-2	1B1	136131-13-051	073
	265	136134-13-051	073
BRN	1B1	136131-03-037	
	265	136134-03-037	
BLU	1B1	136131-02-163	
	265	136134-02-163	
MAIN	1B1	136137-01-100	12D 3
	265	136138-01-100	12D 3
MAIN	1B1	136139-01-100	073 3
	265	136140-01-100	073 3
GRN	1B1	136135-08-080	073
	265	136136-08-080	073
BLK	1B1	136131-06-064	
	265	136134-06-064	
THROW IN WIRE #1	1B1	136131-02-018	2
	265	136134-02-018	2
THROW IN WIRE #2	1B1	136131-19-006	2
	265	136134-19-006	2
THROW IN WIRE #3	1B1	136131-03-075	2
	265	136134-03-075	2
THROW IN WIRE #4	1B1	136131-19-218	2
	265	136134-19-218	2
GROUND ATS		136145-01-010	073



DETAIL EA

3 ATTACH ONE END OF MAIN TO LOAD CENTER. COVER OTHER END OF MAIN CABLE ASM WITH 1700 MM OF CONDUIT 091234-02-000. SECURE WITH TAPE 8363-01-000.

2 SEE DETAIL EA FOR CONNECTOR INSTALLATION.

1. ALL GROUND WIRES TO BE COVERED WITH TUBING 8041-02-000.

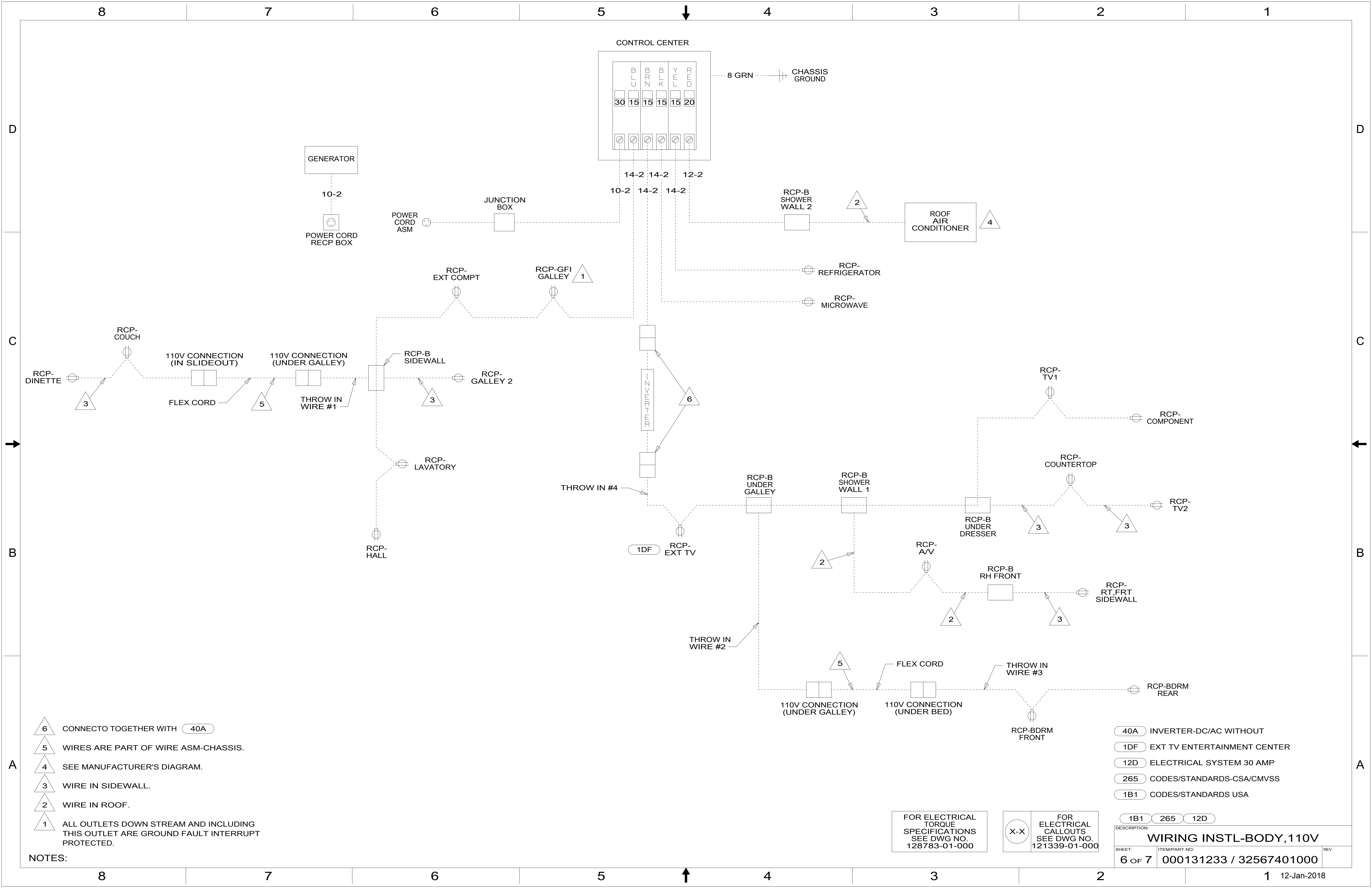
NOTES:

- 12D ELECTRICAL SYSTEM 30 AMP
- 073 COOLING UPGRADE PACKAGE
- 265 CODES/STANDARDS-CSA/CMVSS
- 1B1 CODES/STANDARDS USA

FOR ELECTRICAL TORQUE SPECIFICATIONS SEE DWG NO. 128783-01-000

FOR ELECTRICAL CALLOUTS SEE DWG NO. 121339-01-000

1B1	265
DESCRIPTION:	
WIRING INSTL-BODY, 110V	
SHEET:	ITEM/PART NO:
5 OF 7	000131233 / 32567401000
REV	



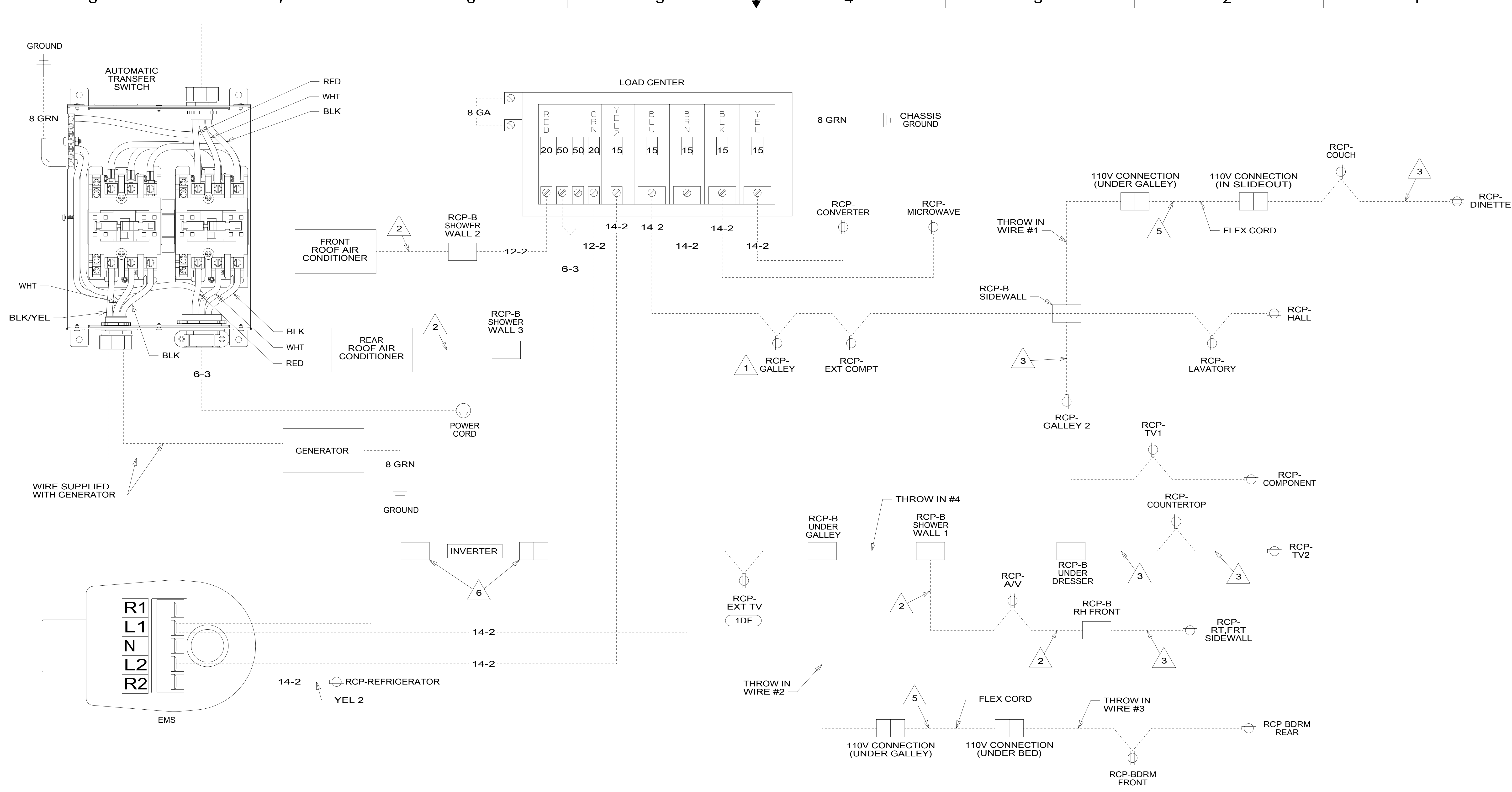
- 6 CONNECTO TOGETHER WITH 40A
- 5 WIRES ARE PART OF WIRE ASM-CHASSIS.
- 4 SEE MANUFACTURER'S DIAGRAM.
- 3 WIRE IN SIDEWALL.
- 2 WIRE IN ROOF.
- 1 ALL OUTLETS DOWN STREAM AND INCLUDING THIS OUTLET ARE GROUND FAULT INTERRUPT PROTECTED.

- 40A INVERTER-DC/AC WITHOUT
- 1DF EXT TV ENTERTAINMENT CENTER
- 12D ELECTRICAL SYSTEM 30 AMP
- 265 CODES/STANDARDS-CSA/CMVSS
- 1B1 CODES/STANDARDS USA

FOR ELECTRICAL TORQUE SPECIFICATIONS SEE DWG NO. 128783-01-000

FOR ELECTRICAL CALLOUTS SEE DWG NO. 121339-01-000

DESCRIPTION: WIRING INSTL-BODY, 110V		
SHEET: 6 OF 7	ITEM/PART NO: 000131233 / 32567401000	REV



- NOTES:**
- △ 6 CONNECT TO TOGETHER WITH 40A
 - △ 5 WIRES ARE PART OF WIRE ASM-CHASSIS.
 - △ 4 SEE MANUFACTURER'S DIAGRAM.
 - △ 3 WIRE IN SIDEWALL.
 - △ 2 WIRE IN ROOF.
 - △ 1 ALL OUTLETS DOWN STREAM AND INCLUDING THIS OUTLET ARE GROUND FAULT INTERRUPT PROTECTED.

- 40A INVERTER-DC/AC WITHOUT
- 1DF EXT TV ENTERTAINMENT CENTER
- 073 COOLING UPGRADE PACKAGE
- 265 CODES/STANDARDS-CSA/CMVSS
- 1B1 CODES/STANDARDS USA

FOR ELECTRICAL TORQUE SPECIFICATIONS SEE DWG NO. 128783-01-000

FOR ELECTRICAL CALLOUTS SEE DWG NO. 121339-01-000

DESCRIPTION:	1B1 265 073	
WIRING INSTL-BODY, 110V		
SHEET:	ITEM/PART NO.:	REV
7 OF 7	000131233 / 32567401000	