

WALL PLATE-BLANK, PLASTIC  
192613-01-CHT (2)

PANEL-COVER, BRACKET  
194672-03-CHT  
SCREW  
G67-08-08U

CABINET ASM-OVHD, DOOR (REF)

PLATE-WALL, TRIPLE COAX HORIZ  
149557-04-CHT

CONNECTOR-F, 90 RIGHT ANGLE  
176986-01-000 (3)

CLAMP  
10497-01-000  
SCREW  
G11-08-12U

RCP-TV (REF)

SLIDEOUT ROOM CEILING (REF)

BRACKET-MOUNTING, TV  
175053-16-CHT  
SCREW  
G39-08-12U (5)

SWITCH-VID, ANT, DVD PWR SUP  
193571-01-000

BRACKET-VIDEO SWITCH  
156586-01-CHT

FASTENER-DUAL LOCK  
085774-01-000 (200 MM)(2)  
085774-02-000 (200 MM)(2)

PANEL-COVER, BRACKET  
000122894 / 323485-01-CHT  
SCREW  
G67-08-08U

CLAMP  
10497-02-000  
SCREW  
G11-08-12U

CLIP-TRIM  
130034-01-CHT  
SCREW  
G39-08-12U (4)

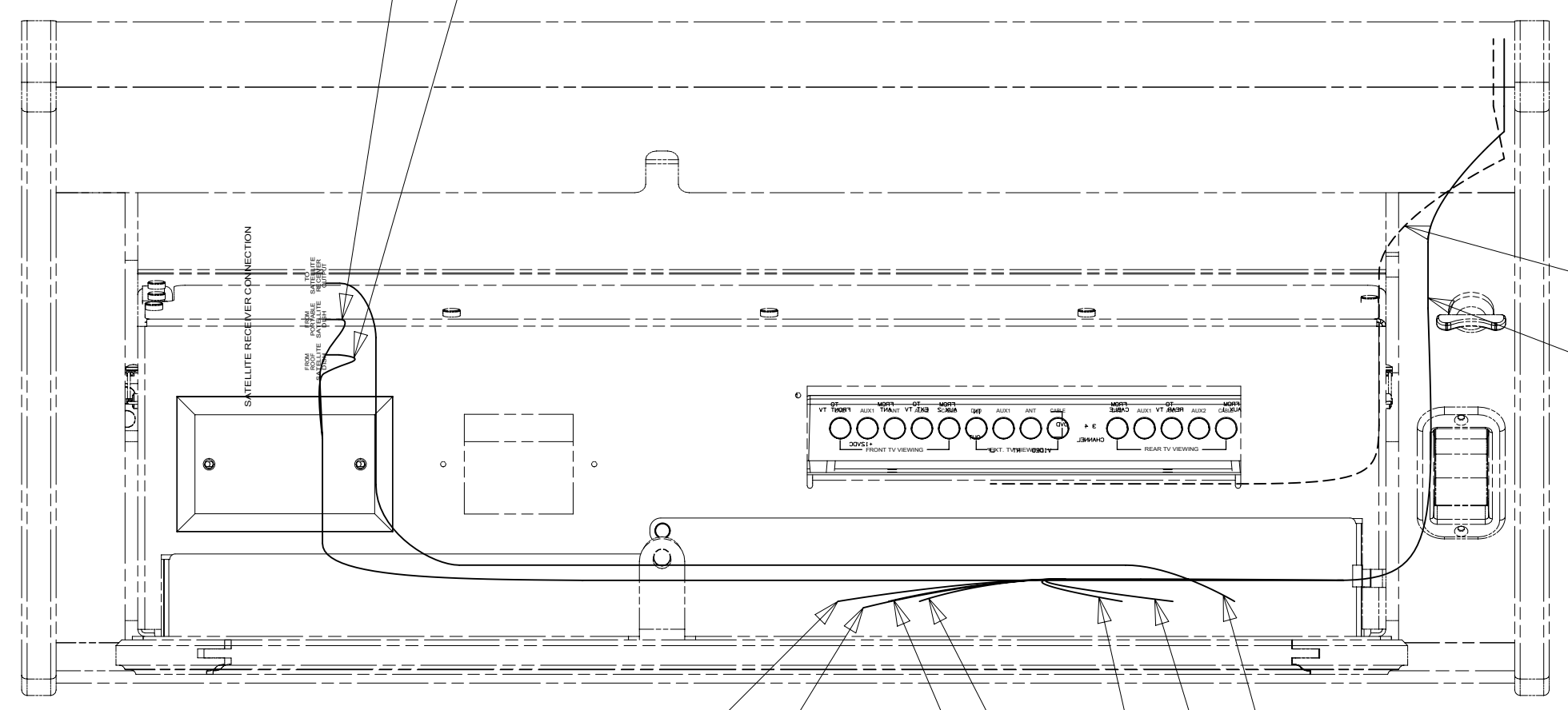
VIEW AA  
(TV NOT SHOWN)

456

591

COAX (GLD)  
TO SAT PREP PLATE

COAX (ORG)  
TO SAT PREP PLATE



110V (BRN-2)  
FROM ROOF TO OUTLET

12V AND COAX  
FROM ROOF

COAX (BRN)  
TO VIDEO SWITCHER

12V TO  
VIDEO SWITCHER

COAX (RED/RED)  
TO VIDEO SWITCHER

COAX (GRN)  
TO VIDEO SWITCHER

COAX (RED)  
TO VIDEO SWITCHER

COAX (YEL)  
TO VIDEO SWITCHER

COAX (BLU)  
TO VIDEO SWITCHER

VIEW AB

TV-39", FLAT PANEL DLED, HDTV  
000023379 / 314833-01-000  
SCREW  
0MG02U-06-010 (4)  
(VESA MOUNT)  
SCREW  
SUPPLIED WITH TV  
(LOWER MOUNT)

FOR ELECTRICAL  
TORQUE  
SPECIFICATIONS  
SEE DWG NO.  
128783-01-000

FOR ELECTRICAL  
CALLOUTS  
SEE DWG NO.  
121339-01-000

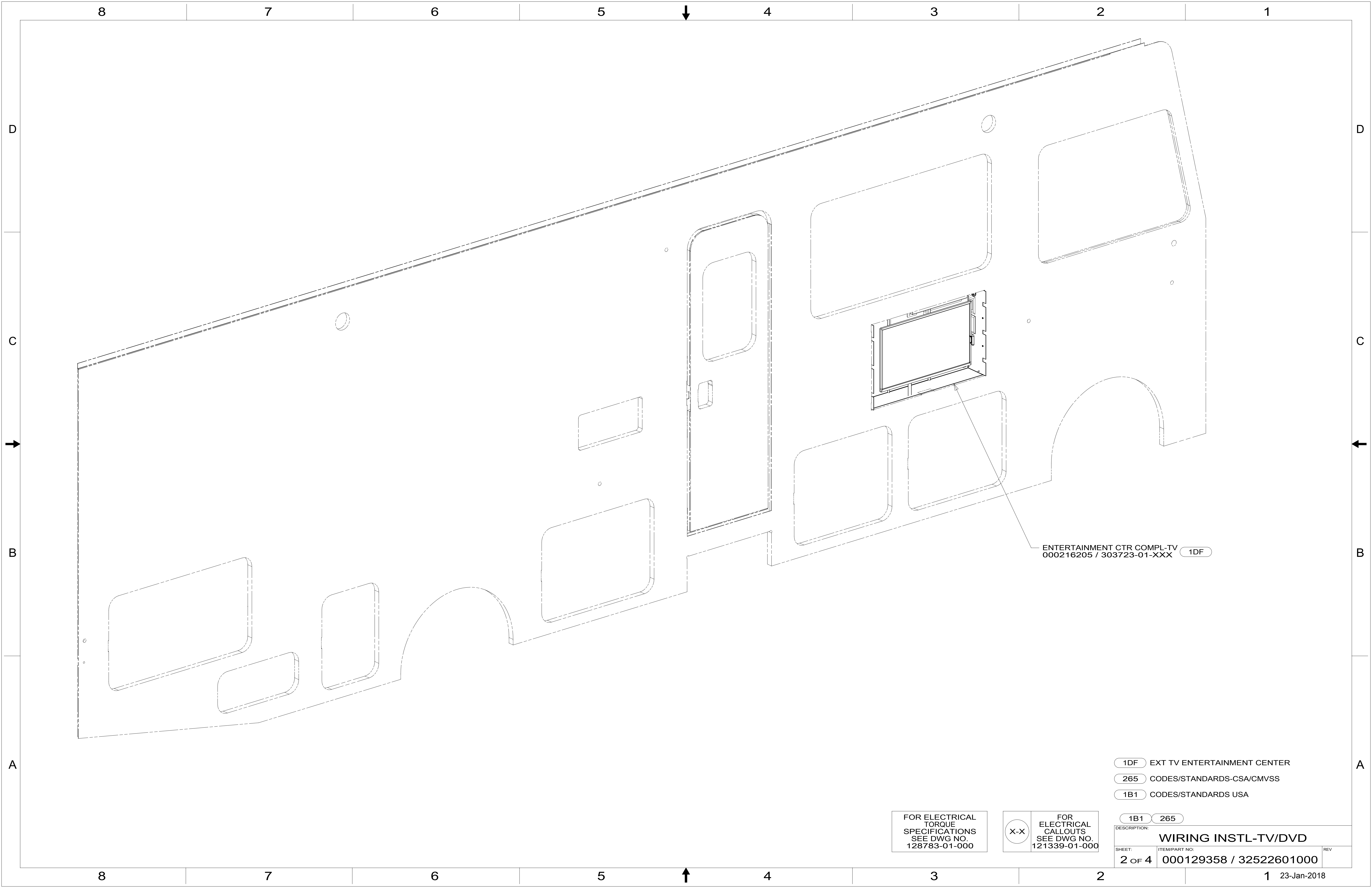
- NOTES:
1. 110V WIRE TO BE CLAMPED WITH CLAMP 10497-05-000 WITHIN 200MM OF OUTLET BOXES, USE SCREW G67-10-12B.
  2. ALL WIRES TO BE SECURED WITH CLAMP 10495-01-000 OR CLIP 80734-01-000 EVERY 600MM. USE SCREW G67-10-12B UNLESS OTHERWISE SPECIFIED.
  3. WHERE WIRES PASS THROUGH HOLES IN STEEL AND NOT OTHERWISE PROTECTED, USE GROMMET 92908-02-000.

265 CODES/STANDARDS-CSA/CMVSS

1B1 CODES/STANDARDS USA

1B1 265

<b>WINNEBAGO</b> COPYRIGHT 2016 WINNEBAGO INDUSTRIES, INC.	
DSNR:	ALL DIMENSIONS ARE IN MILLIMETERS
DIFTR:	
UNSPECIFIED TOLERANCES:	MATERIAL:
WHOLE DIM (X) : 3	
ONE-PLACE (X.X) : 1.5	
TWO-PLACE (X.XX) : 0.50	
ANGLE : 1°	
REFER TO ES0018 FOR FASTENER TIGHTENING GUIDELINES	WEIGHT: (LBS) FIRST USED: <b>18 E31BE</b>
<b>DESCRIPTION:</b> <b>WIRING INSTL-TV/DVD</b>	
SHEET: <b>1 OF 4</b>	ITEM/PART NO.: <b>000129358 / 32522601000</b>
REF:	REV:



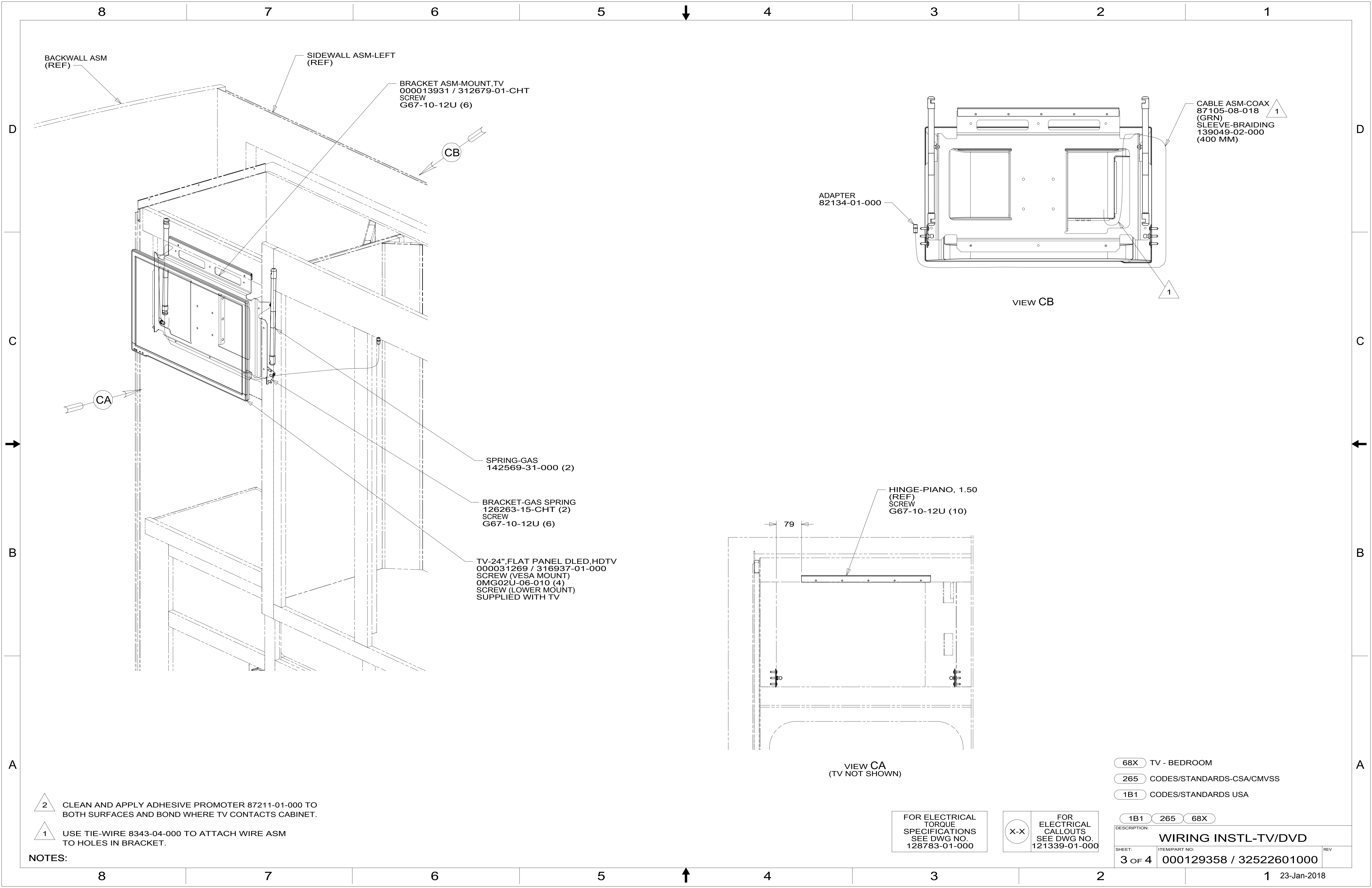
ENTERTAINMENT CTR COMPL-TV  
000216205 / 303723-01-XXX 1DF

- 1DF EXT TV ENTERTAINMENT CENTER
- 265 CODES/STANDARDS-CSA/CMVSS
- 1B1 CODES/STANDARDS USA

FOR ELECTRICAL  
TORQUE  
SPECIFICATIONS  
SEE DWG NO.  
128783-01-000

FOR  
ELECTRICAL  
CALLOUTS  
SEE DWG NO.  
121339-01-000

DESCRIPTION:		1B1 265
<b>WIRING INSTL-TV/DVD</b>		
SHEET:	ITEM/PART NO.:	REV
2 OF 4	000129358 / 32522601000	



BACKWALL ASM (REF)

SIDEWALL ASM-LEFT (REF)

BRACKET ASM-MOUNT, TV  
000013931 / 312679-01-CHT  
SCREW  
G67-10-12U (6)

CB

CA

SPRING-GAS  
142569-31-000 (2)

BRACKET-GAS SPRING  
126263-15-CHT (2)  
SCREW  
G67-10-12U (6)

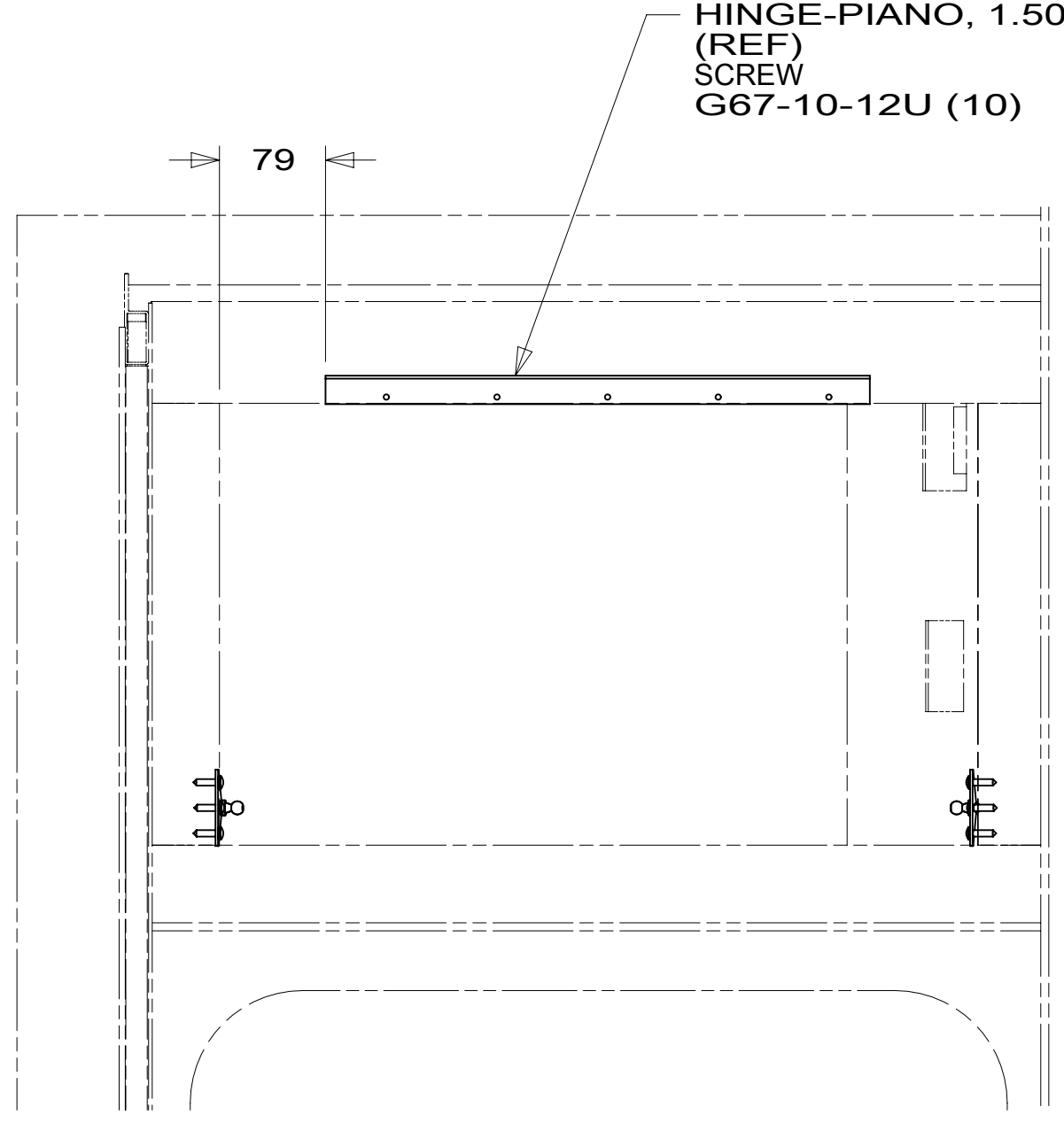
TV-24", FLAT PANEL DLED, HDTV  
000031269 / 316937-01-000  
SCREW (VESA MOUNT)  
OMG02U-06-010 (4)  
SCREW (LOWER MOUNT)  
SUPPLIED WITH TV

HINGE-PIANO, 1.50  
(REF)  
SCREW  
G67-10-12U (10)

ADAPTER  
82134-01-000

CABLE ASM-COAX  
87105-08-018  
(GRN)  
SLEEVE-BRAIDING  
139049-02-000  
(400 MM)

VIEW CB



VIEW CA  
(TV NOT SHOWN)

2 CLEAN AND APPLY ADHESIVE PROMOTER 87211-01-000 TO BOTH SURFACES AND BOND WHERE TV CONTACTS CABINET.

1 USE TIE-WIRE 8343-04-000 TO ATTACH WIRE ASM TO HOLES IN BRACKET.

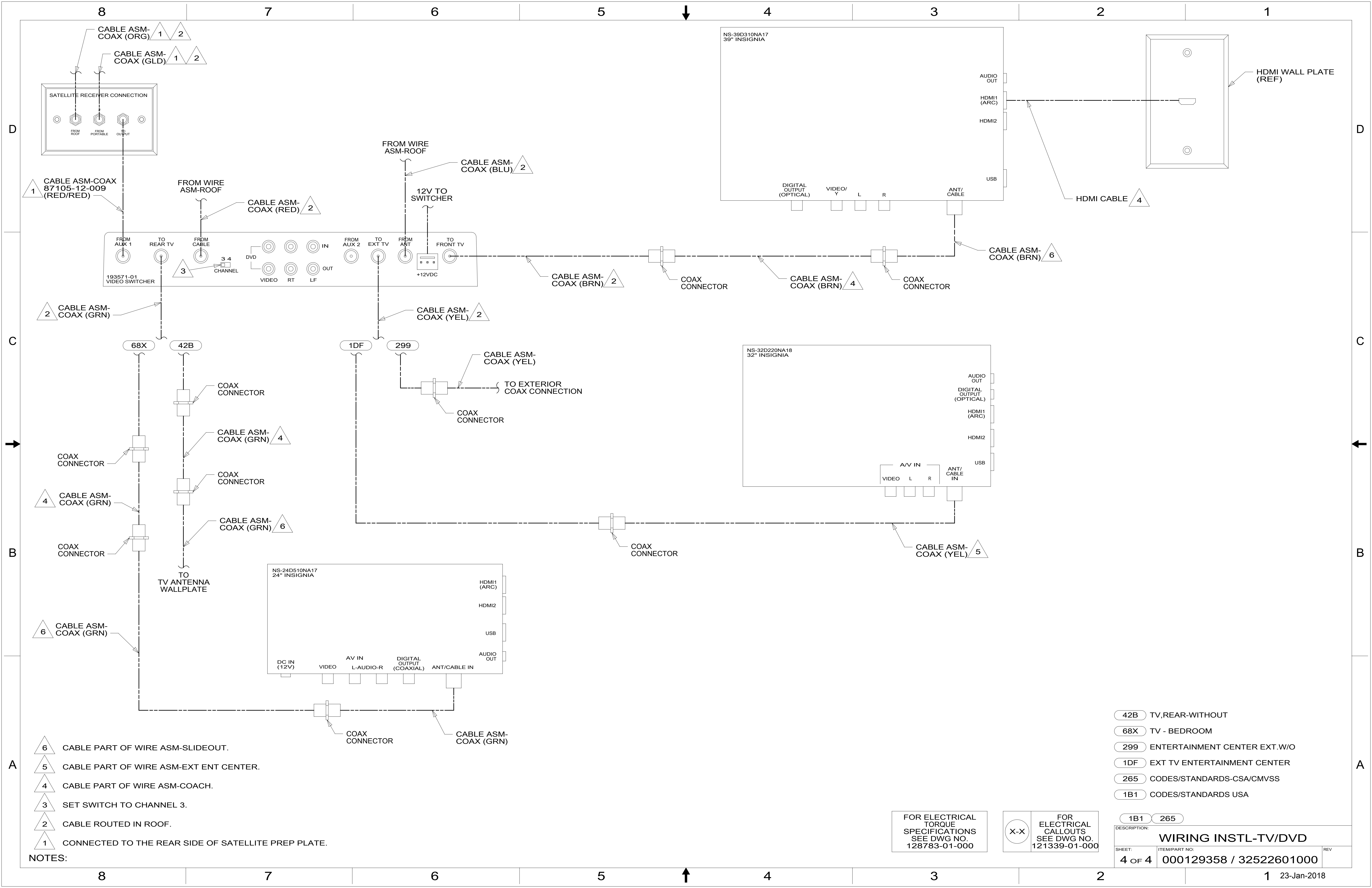
NOTES:

FOR ELECTRICAL TORQUE SPECIFICATIONS SEE DWG NO. 128783-01-000

FOR ELECTRICAL CALLOUTS SEE DWG NO. 121339-01-000

- 68X TV - BEDROOM
- 265 CODES/STANDARDS-CSA/CMVSS
- 1B1 CODES/STANDARDS USA

DESCRIPTION: <b>WIRING INSTL-TV/DVD</b>		
1B1	265	68X
SHEET: 3 OF 4	ITEM/PART NO: 000129358 / 32522601000	REV



- 6 CABLE PART OF WIRE ASM-SLIDEOUT.
- 5 CABLE PART OF WIRE ASM-EXT ENT CENTER.
- 4 CABLE PART OF WIRE ASM-COACH.
- 3 SET SWITCH TO CHANNEL 3.
- 2 CABLE ROUTED IN ROOF.
- 1 CONNECTED TO THE REAR SIDE OF SATELLITE PREP PLATE.

NOTES:

- 42B TV, REAR-WITHOUT
- 68X TV - BEDROOM
- 299 ENTERTAINMENT CENTER EXT. W/O
- 1DF EXT TV ENTERTAINMENT CENTER
- 265 CODES/STANDARDS-CSA/CMVSS
- 1B1 CODES/STANDARDS USA

FOR ELECTRICAL TORQUE SPECIFICATIONS SEE DWG NO. 128783-01-000

FOR ELECTRICAL CALLOUTS SEE DWG NO. 121339-01-000

DESCRIPTION:		1B1 265	
<b>WIRING INSTL-TV/DVD</b>			
SHEET:	ITEM/PART NO.:	REV	
4 OF 4	000129358 / 32522601000		