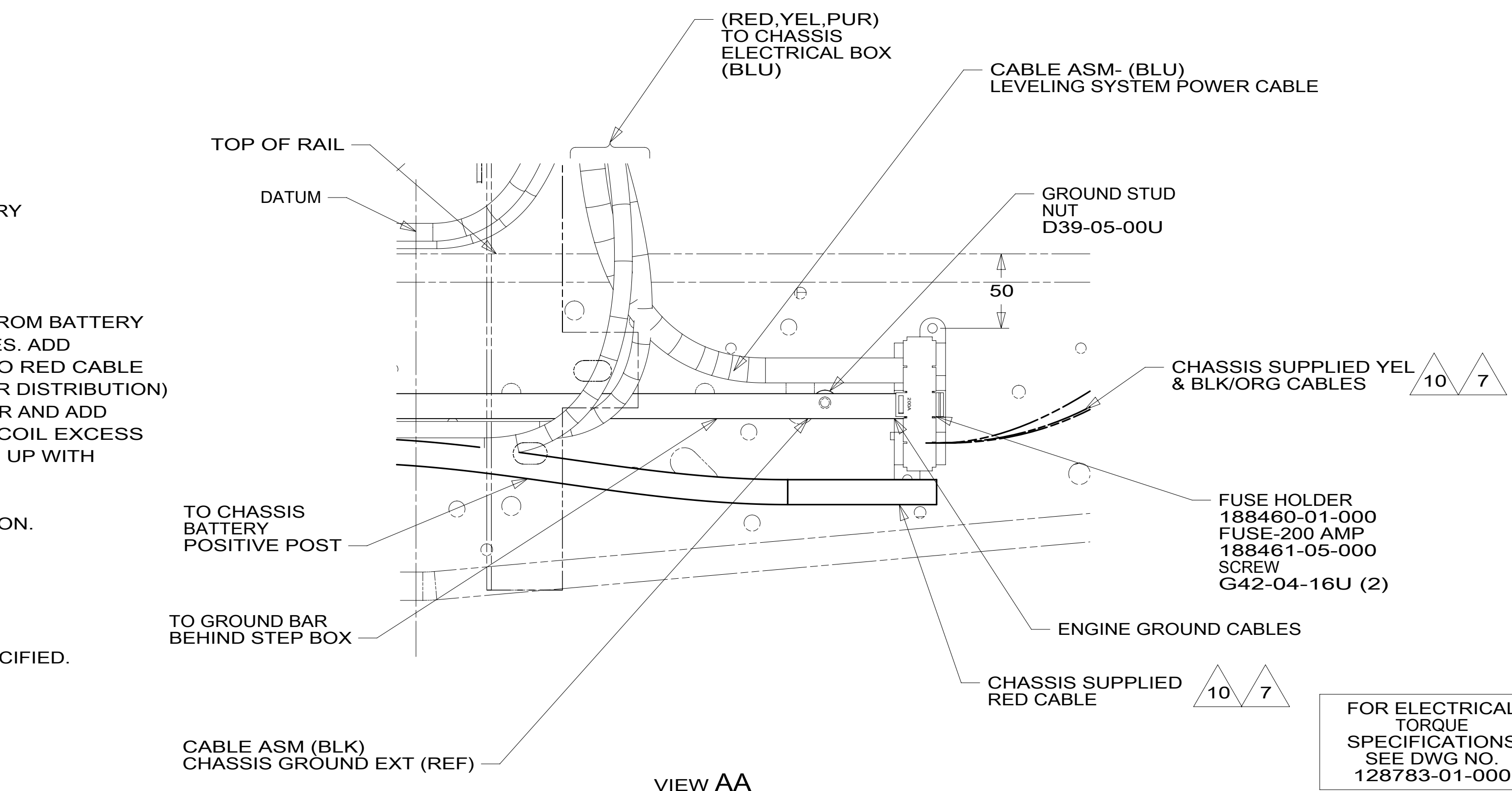


4 PIN HOUSING TO ELECTRIC STEP
 MP.KD TO STEP DOOR JAMB SWITCH
 BATTERY INSTL 000129419 / 325258-01-000
 MAIN DROP TO WIRE ASM-COACH
 GROUNDS DETAIL BB
 GROMMET 023942-01-000
 SEAL-TRIM 113452-02-000 (153 MM) 8
 MP.JT TO LP TANK
 TO FORD SUPPLIED TAILLAMP CIRCUIT

TO GROUND BOLT
 7 PIN HSG TO TRAILER CONNECTOR
 600 DROP JM,JJ,JB,JH TO FURNACE
 6 PIN HSG TO BACKWALL
 TO LEFT SLIDEOUT REAR MOTOR
 CABLE ASM-GENERATOR GND (BLK) TO GROUND STUD 4
 8 PIN HOUSING TO GENERATOR
 6691
 CABLE ASM-GENERATOR (GRN) 4
 GROMMET 023942-01-000
 TO SLIDEOUT CONTROL MODULE
 2340
 GROMMET 023942-01-000 (2)
 CHASSIS ELECTRICAL BOX ASM 000126353 / 324384-01-000
 TO WIRE ASM-ELECTRICAL BOX
 TO FRONT LEFT SLIDEOUT FRONT MOTOR
 LEVELING SYSTEM POWER CABLE 4
 697
 DATUM
 FRONT AXLE
 WIRE ASM-CHASSIS 000129420 / 325262-01-000
 TO WIRE ASM-IP.MAIN (THRU HOLE IN FLOOR)
 BY TO PASS THRU STUD 6



- 10 SUPPLIED WITH CHASSIS
- 9 CUT CHASSIS SUPPLIED BATTERY CABLE 700MM FROM BATTERY TERMINAL AND ADD TERMINAL 8348-01-000 TO CUT END.
- 8 COVER SHARP EDGES WHERE WIRE CROSSES FRAME RAILS.
- 7 CUT CHASSIS SUPPLIED POSITIVE BATTERY CABLE 150 MM FROM BATTERY TERMINAL END,DISCARD TERMINAL END AND SEPARATE WIRES. ADD TERMINAL 8348-01-000 AND HEAT SHRINK 176567-04-000 TO RED CABLE (CHASSIS STARTER) AND COMBINE YELLOW (CHASSIS POWER DISTRIBUTION) AND BLACK/ORANGE (CHASSIS ALTERNATOR) WIRES TOGETHER AND ADD TERMINAL 8348-01-000 AND HEAT SHRINK 176567-02-000. COIL EXCESS CABLE ALONG FRAME RAIL JUST BEHIND RADIATOR AND TIE UP WITH TIE-WIRE 8343-04-000.

- 6 SEE WIRING INSTL-FRONT END FOR ADDITIONAL INFORMATION.
 - 5 CLAMP 83610-01-000, SCREW G11-10-16B.
 - 4 SEE BATTERY INSTALLATION FOR ADDITIONAL INFORMATION.
3. ALL DIMENSIONS ARE FROM DATUM UNLESS OTHERWISE SPECIFIED.
 2. SECURE CONDUIT 41953, TAB AS REQUIRED, OVER ALL WIRES IN CONTACT WITH SHARP EDGES.
 1. WIRE TIE 8343-04-000. FASTEN EVERY 600MM MINIMUM.

NOTES:

265 CODES/STANDARDS-CSA/CMVSS
 1B1 CODES/STANDARDS USA
 1B1 265

WINNEBAGO
 COPYRIGHT 2016 WINNEBAGO INDUSTRIES, INC.

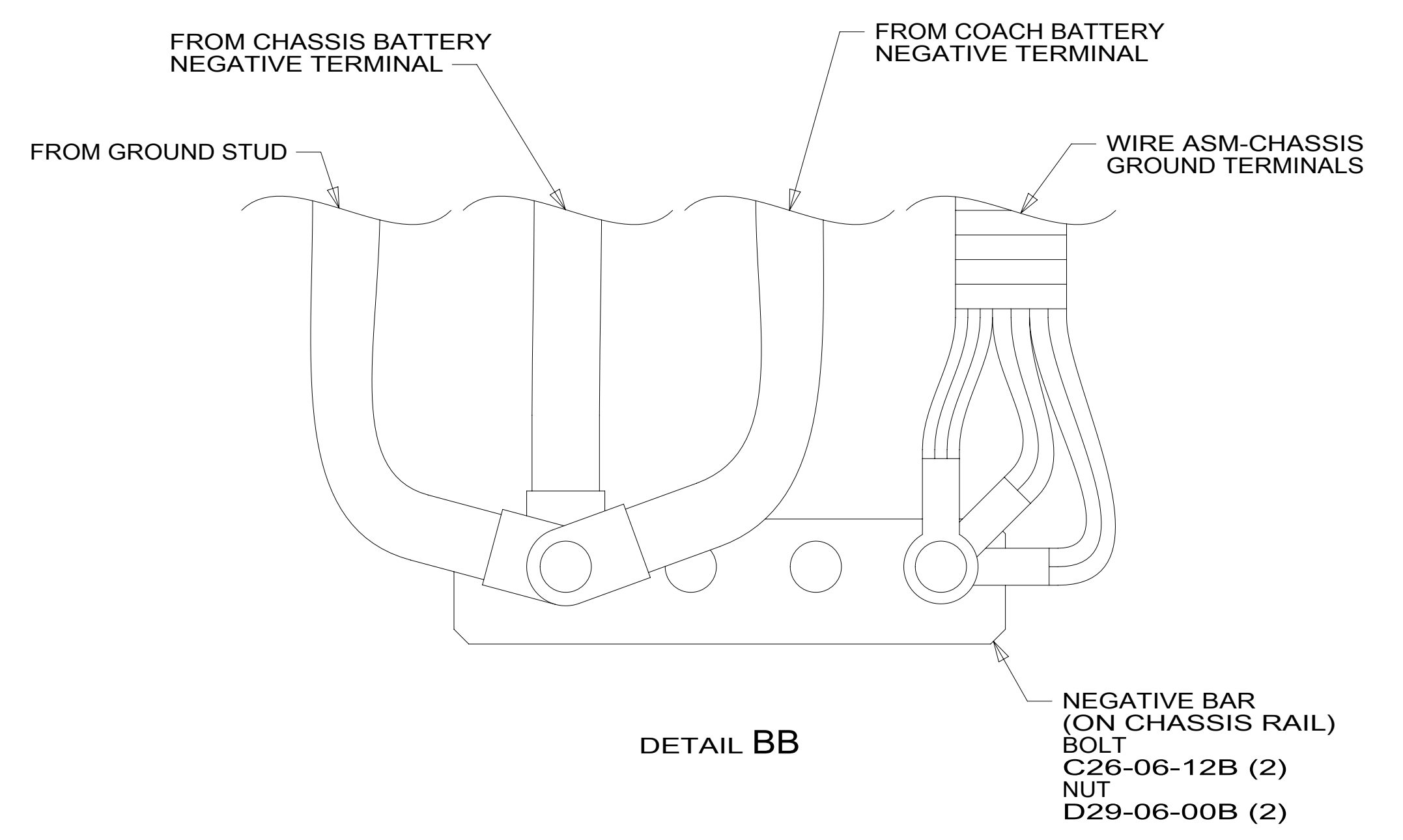
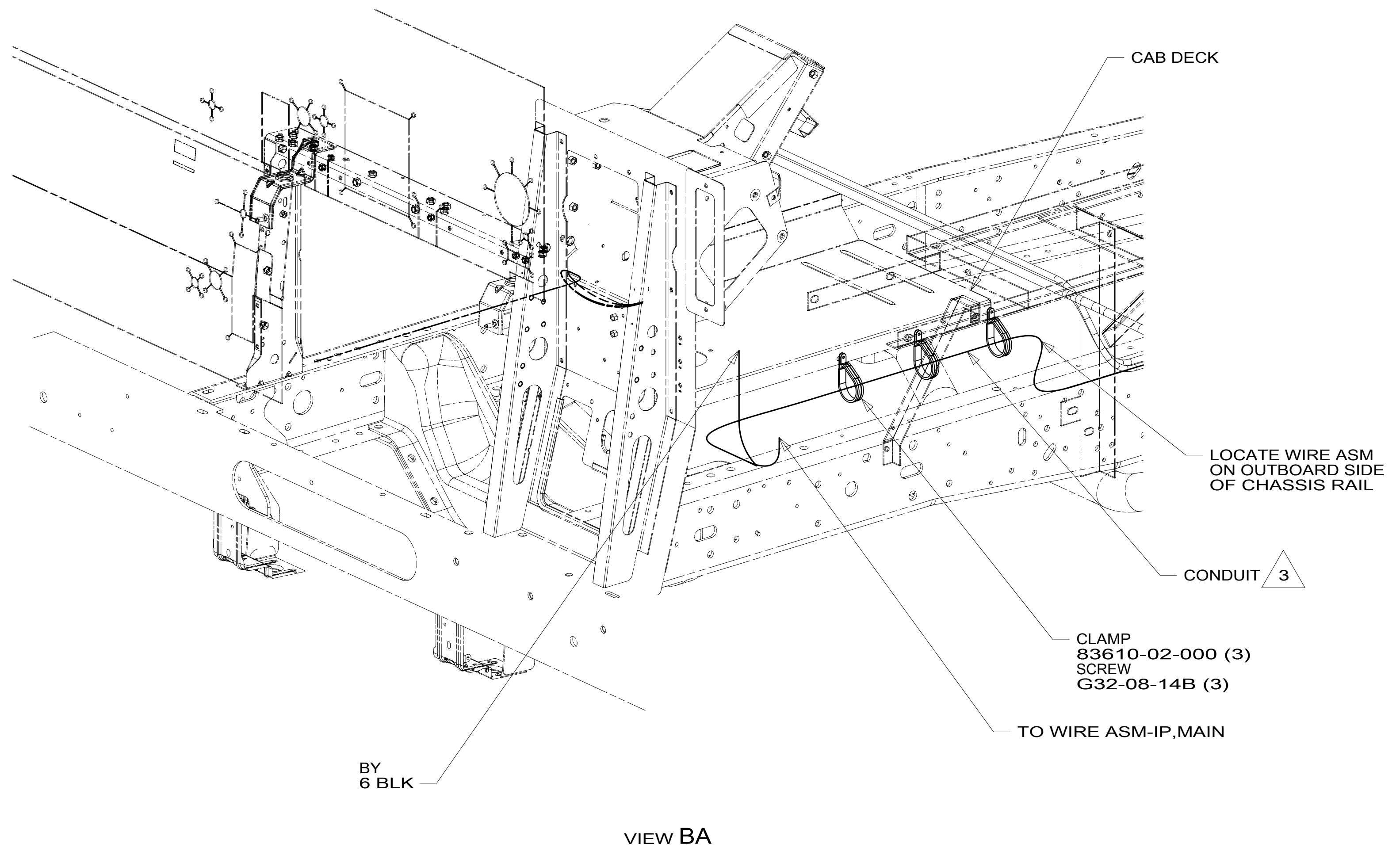
DSNR:	ALL DIMENSIONS ARE IN MILLIMETERS
DFFR:	
UNSPECIFIED TOLERANCES:	MATERIAL:
WHOLE DIM (X) : 3	
ONE-PLACE (X.X) : 1.5	
TWO-PLACE (X.XX) : 0.50	
ANGLE : 1°	
REFER TO ES0018 FOR FASTENER TIGHTENING GUIDELINES	WEIGHT: (LBS) FIRST USED:
	18 E31BE
DESCRIPTION: WIRING INSTL-CHASSIS	
SHEET: 1 OF 2	ITEM/PART NO: 000129353 / 32522301000
REF:	1 12-Jan-2018

FOR ELECTRICAL TORQUE SPECIFICATIONS SEE DWG NO. 128783-01-000

FOR ELECTRICAL CALLOUTS SEE DWG NO. 121339-01-000

8 7 6 5 4 3 2 1

D
C
B
A



3 COVER WITH CONDUIT 41953-10-000 AND 41953-11-000 AS REQUIRED.

- CONNECT CABLES TO COACH SIDE OF BATTERY DISCONNECT WHEN BATTERY DISCONNECT IS USED.
- CUT OFF EXCESS END OF WIRE TIE.

NOTES:

FOR ELECTRICAL TORQUE SPECIFICATIONS SEE DWG NO. 128783-01-000

FOR ELECTRICAL CALLOUTS SEE DWG NO. 121339-01-000

265 CODES/STANDARDS-CSA/CMVSS
1B1 CODES/STANDARDS USA

DESCRIPTION:		1B1 265
WIRING INSTL-CHASSIS		
SHEET:	ITEM/PART NO.:	REV
2 OF 2	000129353 / 32522301000	

8 7 6 5 4 3 2 1 12-Jan-2018