

BATTERY INSTL
00002471 / 312007-01-000

4 PIN HOUSING
TO ELECTRIC STEP

MP,KD
TO STEP DOOR
JAMB SWITCH

BC

MP,JT
TO LP TANK

GROUNDS
DETAIL BB

MAIN 12V DROP
TO WIRE ASM-COACH

110V (BRN) TO COACH

TO FORD SUPPLIED
TAILLAMP CIRCUITS

CABLE ASM-
GENERATOR (GRN) 4

8 PIN HOUSING
TO GENERATOR

7 SEAL-TRIM
113452-02-000 (153 MM) 7

SEAL-TRIM
113452-02-000 (153 MM) 7

SEAL-TRIM
113452-02-000 (153 MM) 7

5

5

5

2622

5

5

4181

5

5

5

7155

5

8043

7 PIN HOUSING
TO TRAILER
CONNECTOR

TO GROUND BOLT

8 PIN HOUSING
TO BACKWALL

WIRE ASM-CHASSIS
000159183 / 327549-01-000

DATUM

697

FRONT AXLE

TO BUSS BAR
IN CHASSIS
FUSE BOX 6

TO WIRE ASM-IP,MAIN
(THRU HOLE IN FLOOR)

BATTERY INSTL
(REF)

WIRING TO INVERTER
DATA CABLES
CABLE ASM-FROM FUSE TO INVERTER (ORG)(REF)
CABLE ASM-FROM BATTERY TO INVERTER (BLK)(REF)
CABLE ASM-TEMPERATURE (REF)
CABLE ASM-INVERTER GROUND (REF) 8

WIRING TO SLIDEOUT ROOM
4-PIN HSG
110V (BRN)

2- 2 PIN HSGS, 4 PIN HSG,2- 6 PIN HSGS
TO SLIDEOUT MODULE

GROMMET
023942-02-000
SEAL

CHASSIS ELECTRICAL BOX ASM
191494-06-000

GROMMET
023942-01-000 (6)
SEAL

ROUTE SLIDEOUT MOTOR
WIRES THROUGH HOLE
IN COMPARTMENT

- 8 RUN ALL CABLES THROUGH GROMMET BEFORE SEALING.
- 7 COVER SHARP EDGES WHERE WIRE CROSSES FRAME RAILS.
- 6 SEE WIRING INSTL-FRONT END FOR ADDITIONAL INFORMATION.
- 5 CLAMP 83610-01-000, SCREW G11-10-16B.
- 4 SEE BATTERY INSTL FOR ADDITIONAL INFORMATION.

- 3. WIRE TIE 8343-04-000. FASTEN EVERY 600MM MINIMUM.
- 2. ALL DIMENSIONS ARE FROM DATUM UNLESS OTHERWISE SPECIFIED.
- 1. SECURE CONDUIT 41953, TAB AS REQUIRED, OVER ALL WIRES IN CONTACT WITH SHARP EDGES.

NOTES:

- 16L FORD 22,000#-22.5 AL WHL
- 265 CODES/STANDARDS-CSA/CMVSS
- 1B1 CODES/STANDARDS USA

1B1 265 16L



COPYRIGHT 2016 WINNEBAGO INDUSTRIES, INC.

DSNR:		ALL DIMENSIONS ARE IN MILLIMETERS	
DFFR:		MATERIAL:	
UNSPECIFIED TOLERANCES:		WEIGHT: (LBS)	FIRST USED:
WHOLE DIM (X)	: 3		18 E35F
ONE-PLACE (X.X)	: 1.5		
TWO-PLACE (X.XX)	: 0.50		
ANGLE	: 1°		

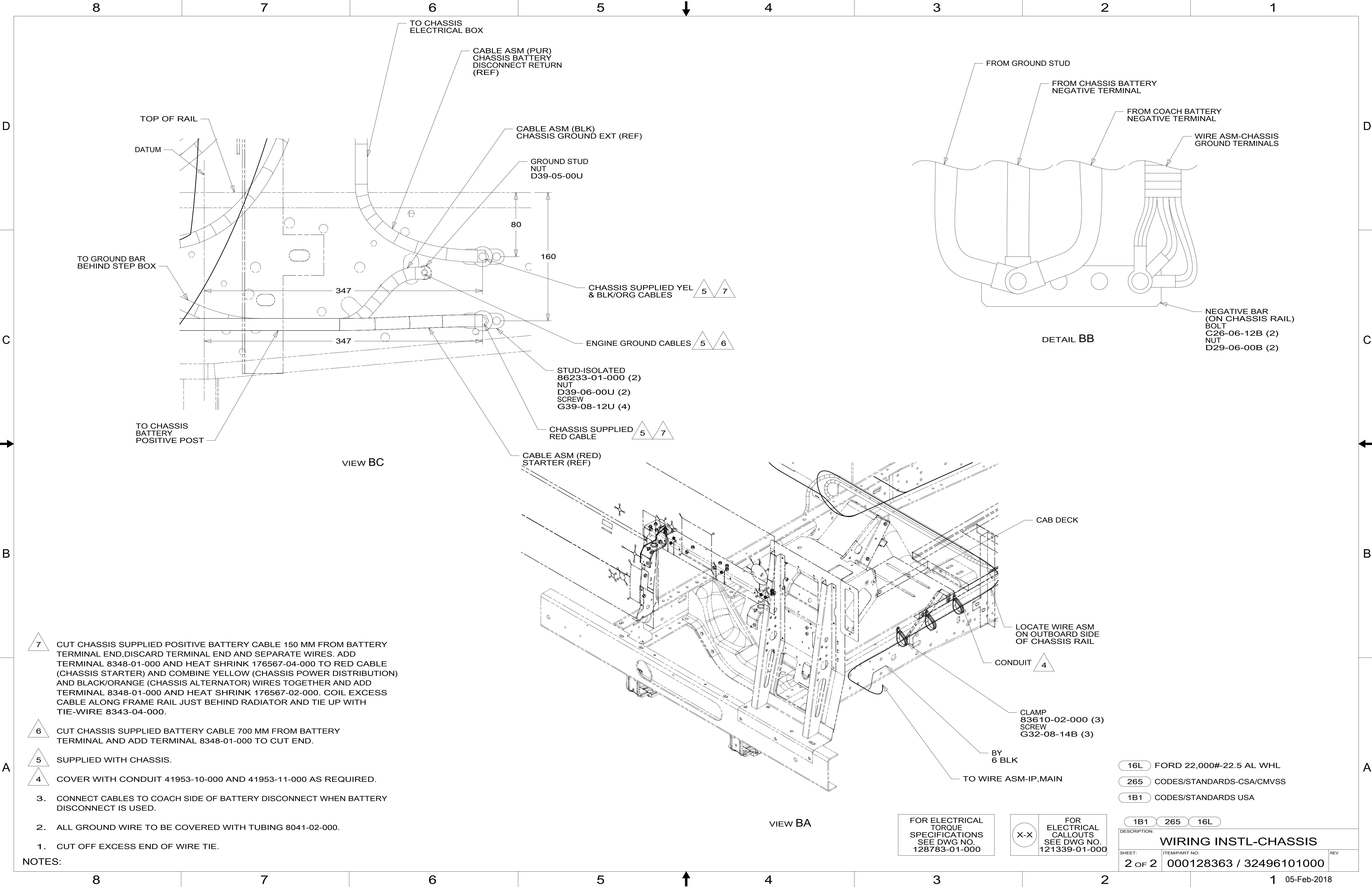
REFER TO ES0018 FOR FASTENER TIGHTENING GUIDELINES

WIRING INSTL-CHASSIS

SHEET: 1 OF 2 ITEM/PART NO: 000128363 / 32496101000 REV

FOR ELECTRICAL TORQUE SPECIFICATIONS SEE DWG NO. 128783-01-000

FOR ELECTRICAL CALLOUTS SEE DWG NO. 121339-01-000



TO CHASSIS ELECTRICAL BOX

CABLE ASM (PUR)
CHASSIS BATTERY DISCONNECT RETURN (REF)

CABLE ASM (BLK)
CHASSIS GROUND EXT (REF)

GROUND STUD NUT
D39-05-00U

80

160

CHASSIS SUPPLIED YEL & BLK/ORG CABLES 5 7

ENGINE GROUND CABLES 5 6

STUD-ISOLATED 86233-01-000 (2)
NUT D39-06-00U (2)
SCREW G39-08-12U (4)

CHASSIS SUPPLIED RED CABLE 5 7

CABLE ASM (RED) STARTER (REF)

TO CHASSIS BATTERY POSITIVE POST

TO GROUND BAR BEHIND STEP BOX

DATUM

TOP OF RAIL

347

347

FROM GROUND STUD

FROM CHASSIS BATTERY NEGATIVE TERMINAL

FROM COACH BATTERY NEGATIVE TERMINAL

WIRE ASM-CHASSIS GROUND TERMINALS

NEGATIVE BAR (ON CHASSIS RAIL)
BOLT C26-06-12B (2)
NUT D29-06-00B (2)

DETAIL BB

- 7 CUT CHASSIS SUPPLIED POSITIVE BATTERY CABLE 150 MM FROM BATTERY TERMINAL END, DISCARD TERMINAL END AND SEPARATE WIRES. ADD TERMINAL 8348-01-000 AND HEAT SHRINK 176567-04-000 TO RED CABLE (CHASSIS STARTER) AND COMBINE YELLOW (CHASSIS POWER DISTRIBUTION) AND BLACK/ORANGE (CHASSIS ALTERNATOR) WIRES TOGETHER AND ADD TERMINAL 8348-01-000 AND HEAT SHRINK 176567-02-000. COIL EXCESS CABLE ALONG FRAME RAIL JUST BEHIND RADIATOR AND TIE UP WITH TIE-WIRE 8343-04-000.
- 6 CUT CHASSIS SUPPLIED BATTERY CABLE 700 MM FROM BATTERY TERMINAL AND ADD TERMINAL 8348-01-000 TO CUT END.
- 5 SUPPLIED WITH CHASSIS.
- 4 COVER WITH CONDUIT 41953-10-000 AND 41953-11-000 AS REQUIRED.
3. CONNECT CABLES TO COACH SIDE OF BATTERY DISCONNECT WHEN BATTERY DISCONNECT IS USED.
2. ALL GROUND WIRE TO BE COVERED WITH TUBING 8041-02-000.
1. CUT OFF EXCESS END OF WIRE TIE.

CAB DECK

LOCATE WIRE ASM ON OUTBOARD SIDE OF CHASSIS RAIL

CONDUIT 4

CLAMP 83610-02-000 (3)
SCREW G32-08-14B (3)

BY 6 BLK

TO WIRE ASM-IP, MAIN

- 16L FORD 22,000#-22.5 AL WHL
- 265 CODES/STANDARDS-CSA/CMVSS
- 1B1 CODES/STANDARDS USA

FOR ELECTRICAL TORQUE SPECIFICATIONS SEE DWG NO. 128783-01-000

X-X

FOR ELECTRICAL CALLOUTS SEE DWG NO. 121339-01-000

DESCRIPTION:	1B1 265 16L	
WIRING INSTL-CHASSIS		
SHEET:	ITEM/PART NO.:	REV
2 OF 2	000128363 / 32496101000	