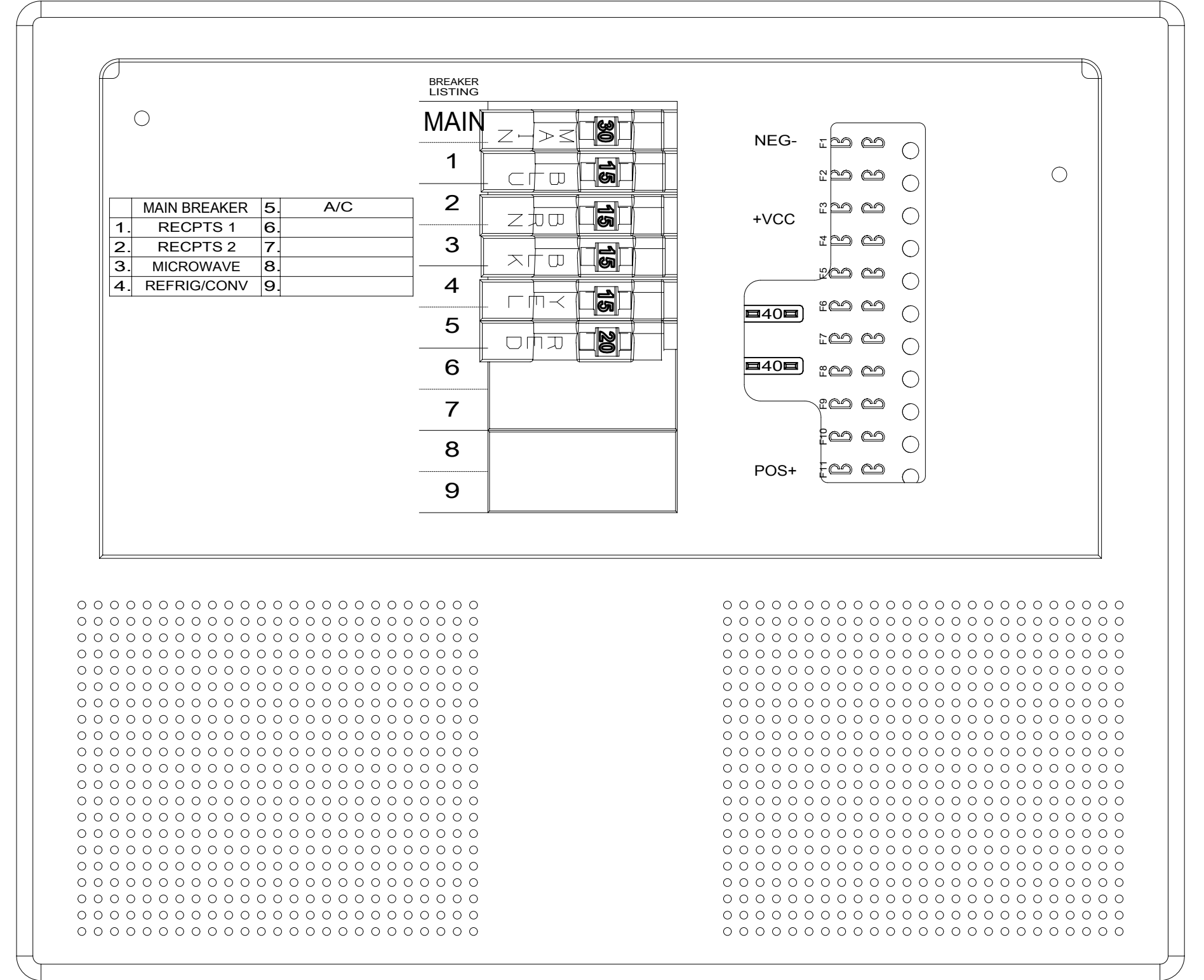
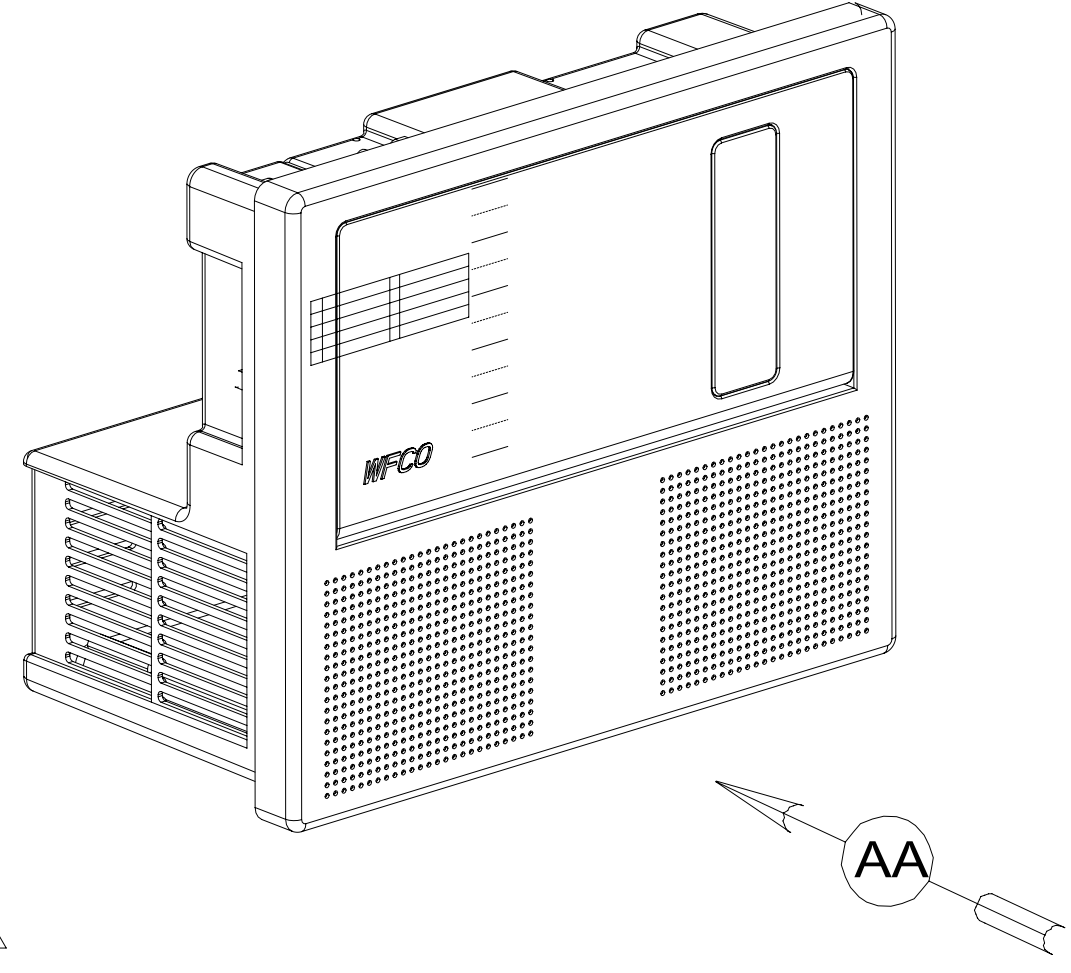
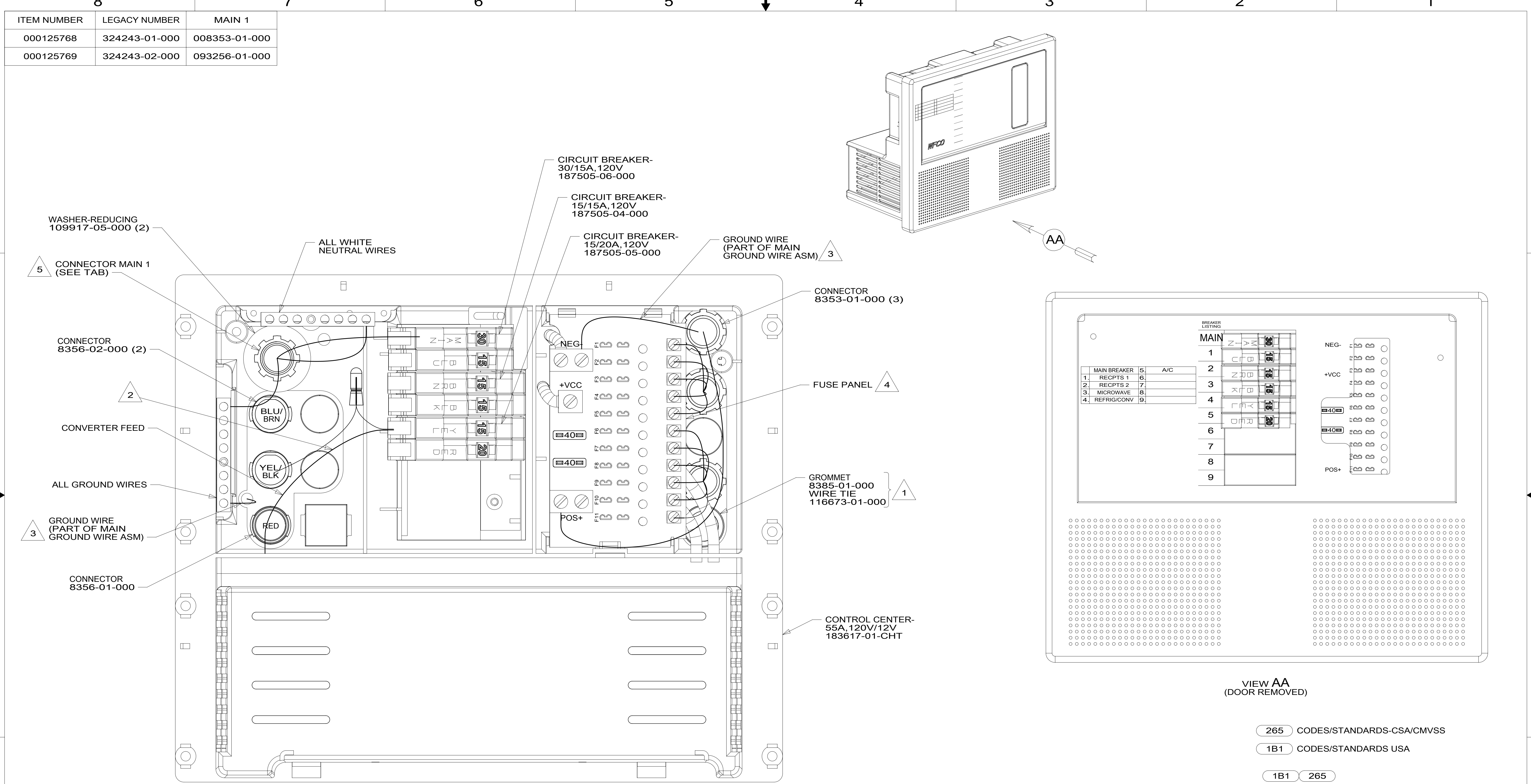


ITEM NUMBER	LEGACY NUMBER	MAIN 1
000125768	324243-01-000	008353-01-000
000125769	324243-02-000	093256-01-000



VIEW AA
(COVER REMOVED)

VIEW AA
(DOOR REMOVED)

- NOTES:
- 5 ATTACH MAIN DURING ASSEMBLY OF LOAD CENTER.
 - 4 SEE WIRING INSTL-BODY, 12V FOR ADDITIONAL INFORMATION.
 - 3 SEE WIRING INSTL-BODY, 110V FOR ADDITIONAL INFORMATION.
 - 2 CONNECT CONVERTER POWER CIRCUIT INTO YELLOW BREAKER. USE SUPPLIED WIRE NUT TO CONNECT TO YELLOW CIRCUIT WIRE.
 - 1 INSERT GROMMET FROM THE INSIDE OF CONTROL CENTER. SECURE 110V WIRES TO BACKSIDE OF CONTROL CENTER WITH WIRE TIE.

FOR ELECTRICAL TORQUE SPECIFICATIONS SEE DWG NO. 128783-01-000

FOR ELECTRICAL CALLOUTS SEE DWG NO. 121339-01-000

- 265 CODES/STANDARDS-CSA/CMVSS
- 1B1 CODES/STANDARDS USA
- 1B1 265

WINNEBAGO
COPYRIGHT 2016 WINNEBAGO INDUSTRIES, INC.

DSNR:	ALL DIMENSIONS ARE IN MILLIMETERS
DFTF:	MATERIAL:
UNSPECIFIED TOLERANCES:	
WHOLE DIM (X) :	3
ONE-PLACE (X.X) :	1.5
TWO-PLACE (X.XX) :	0.50
ANGLE :	1°
REFER TO ES0018 FOR FASTENER TIGHTENING GUIDELINES	WEIGHT: (LBS) FIRST USED: 18 E-SER
DESCRIPTION: LOAD CENTER ASM	
SHEET: 1 OF 1	ITEM/PART NO: 000125732 / 32424300T01
REF:	1 29-Jan-2018