

PLATE-WALL, TRIPLE COAX HORIZ 149557-04-CHT

CONNECTOR-F.90 RIGHT ANGLE 176986-01-000 (3)

MODULE-INTERFACE, IR IMPACT 149750-09-000

WIRE ASM-EXTENSION, 2 PIN 000028274 / 316209-01-000

DETAIL AA

CABINET ASM-OVHD, DOOR (REF)

RCP-2 (BRN-2) SAT PREP

RCP-2 (BRN-2) OVHD A/V CAB

SPLITTER-TV, 2 WAY 086756-01-000 (68R)

CLAMP 10497-01-000

WALL PLATE-BLANK, PLASTIC 192613-01-CHT (2)

PANEL-COVER, BRACKET 194672-03-CHT

SCREW 000G67-08-08U

PANEL-COVER, BRACKET 000122894 / 323485-01-CHT

SCREW 000G67-08-08U

4 TRANSMITTER-INFRARED, IMPACT 149750-11-000

SWITCH-VID, ANT, DVD PWR SUP 193571-01-000

BRACKET-VIDEO SWITCH 156586-01-CHT

FASTENER-DUAL LOCK 085774-01-000 (200 MM) (2)

085774-02-000 (200 MM) (2)

CLAMP 10497-02-000

COAX (GLD) TO SAT PREP PLATE

COAX (ORG) TO SAT PREP PLATE

12V TO IR MODULE

IR RECEIVER CABLE

110V (BRN-2) FROM ROOF TO OUTLET

12V AND COAX FROM ROOF

COAX (GRN) TO SPLITTER (68R)

COAX (BRN) TO VIDEO SWITCHER

12V TO VIDEO SWITCHER

COAX (BLU) TO VIDEO SWITCHER

68R COAX (UNMARKED) TO VIDEO SWITCHER OR

1H5 COAX (YEL) TO VIDEO SWITCHER

RCA, 3-WAY TO VIDEO SWITCHER

COAX (YEL) TO SPLITTER (68R)

COAX (RED/RED) TO VIDEO SWITCHER

COAX (UNMARKED) TO VIDEO SWITCHER OR

COAX (GRN) TO VIDEO SWITCHER (1H5)

COAX (RED) TO VIDEO SWITCHER

HDMI TO SAT PREP AREA

68R TV - FRONT

1H5 TV, FRONT-WITHOUT

265 CODES/STANDARDS-CSA/CMVSS

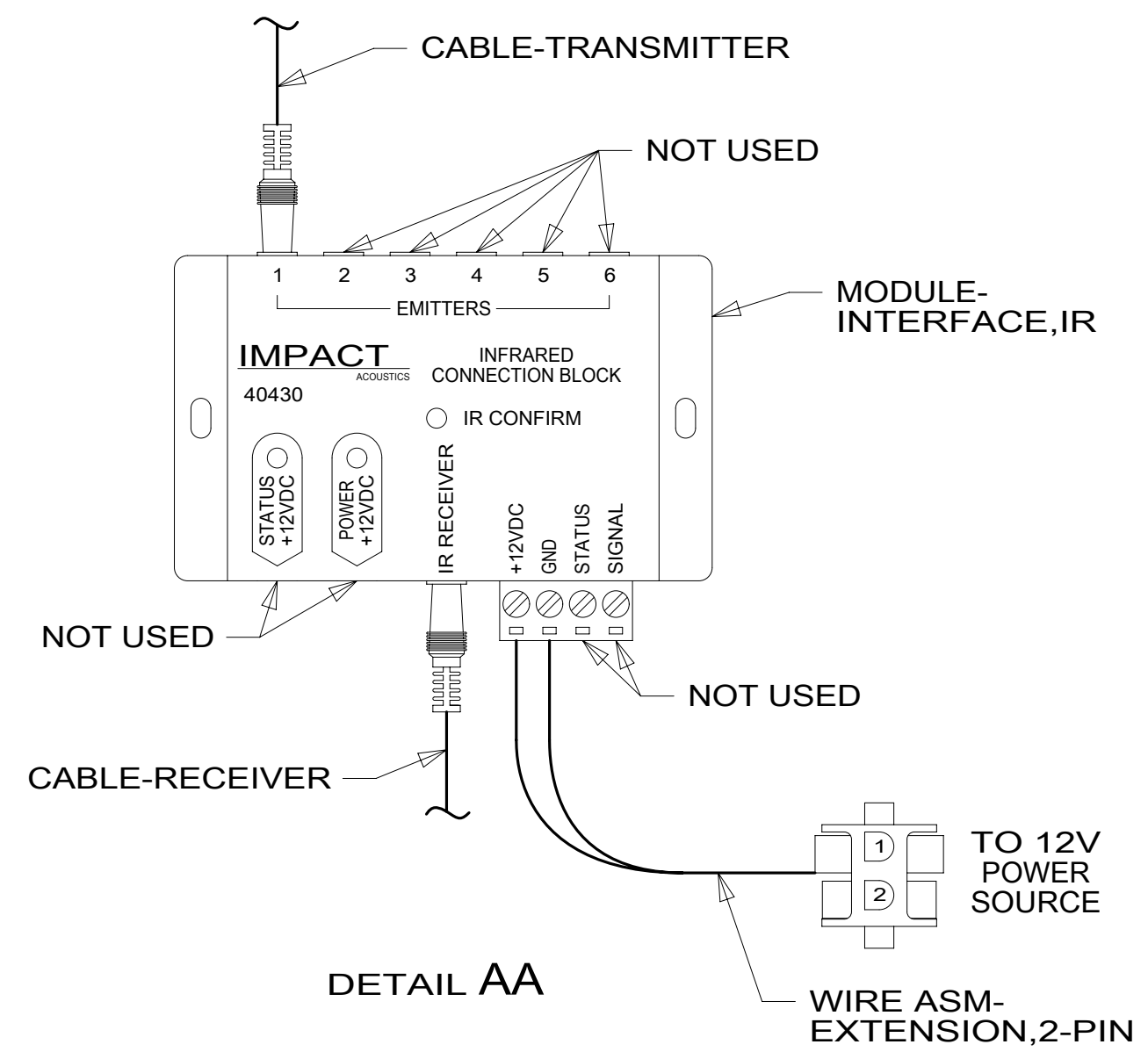
1B1 CODES/STANDARDS USA

1B1 265

<b>WINNEBAGO</b>		COPYRIGHT 2016 WINNEBAGO INDUSTRIES, INC.	
DSNR:		ALL DIMENSIONS ARE IN MILLIMETERS	
DIFFR:		MATERIAL:	
UNSPECIFIED TOLERANCES:			
WHOLE DIM (X)	: 3		
ONE-PLACE (X.X)	: 1.5		
TWO-PLACE (X.XX)	: 0.50		
ANGLE	: 1°		
REFER TO ES0018 FOR FASTENER TIGHTENING GUIDELINES	WEIGHT: (LBS)	FIRST USED:	
		<b>18 E27N</b>	
<b>DESCRIPTION: WIRING INSTL-TV/DVD</b>			
SHEET:	ITEM/PART NO:	REV:	
<b>1 OF 4</b>	<b>000124494 / 32393901000</b>		
REF:			

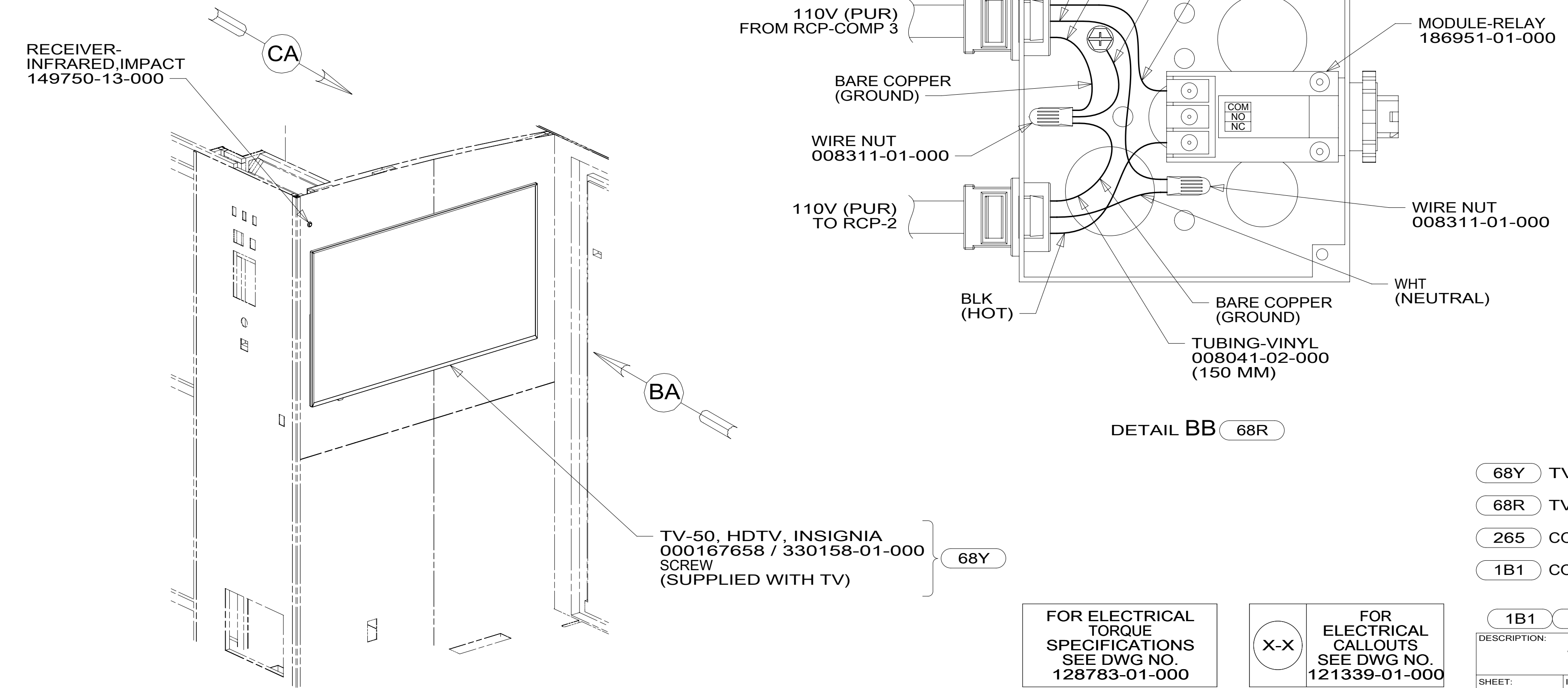
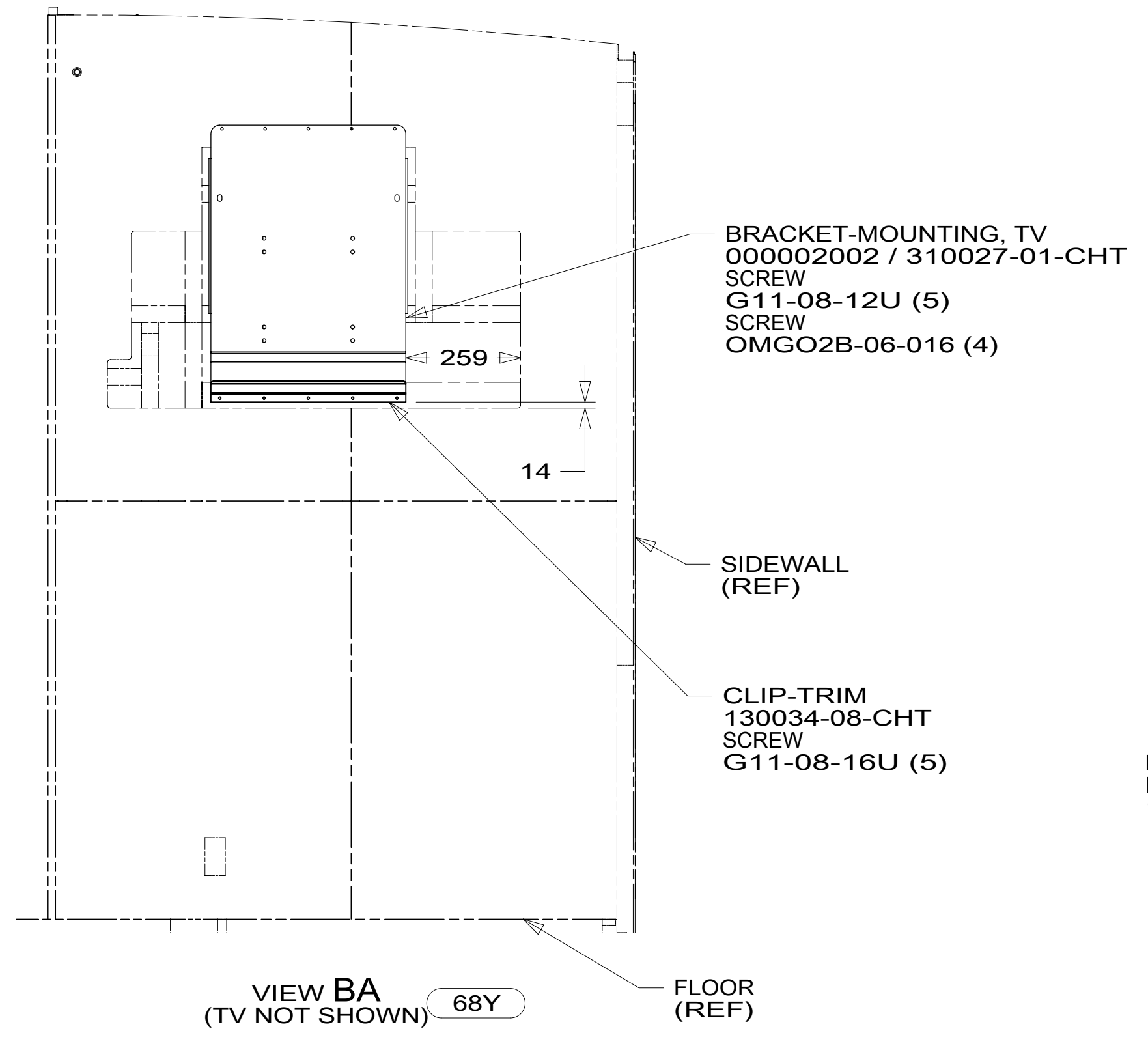
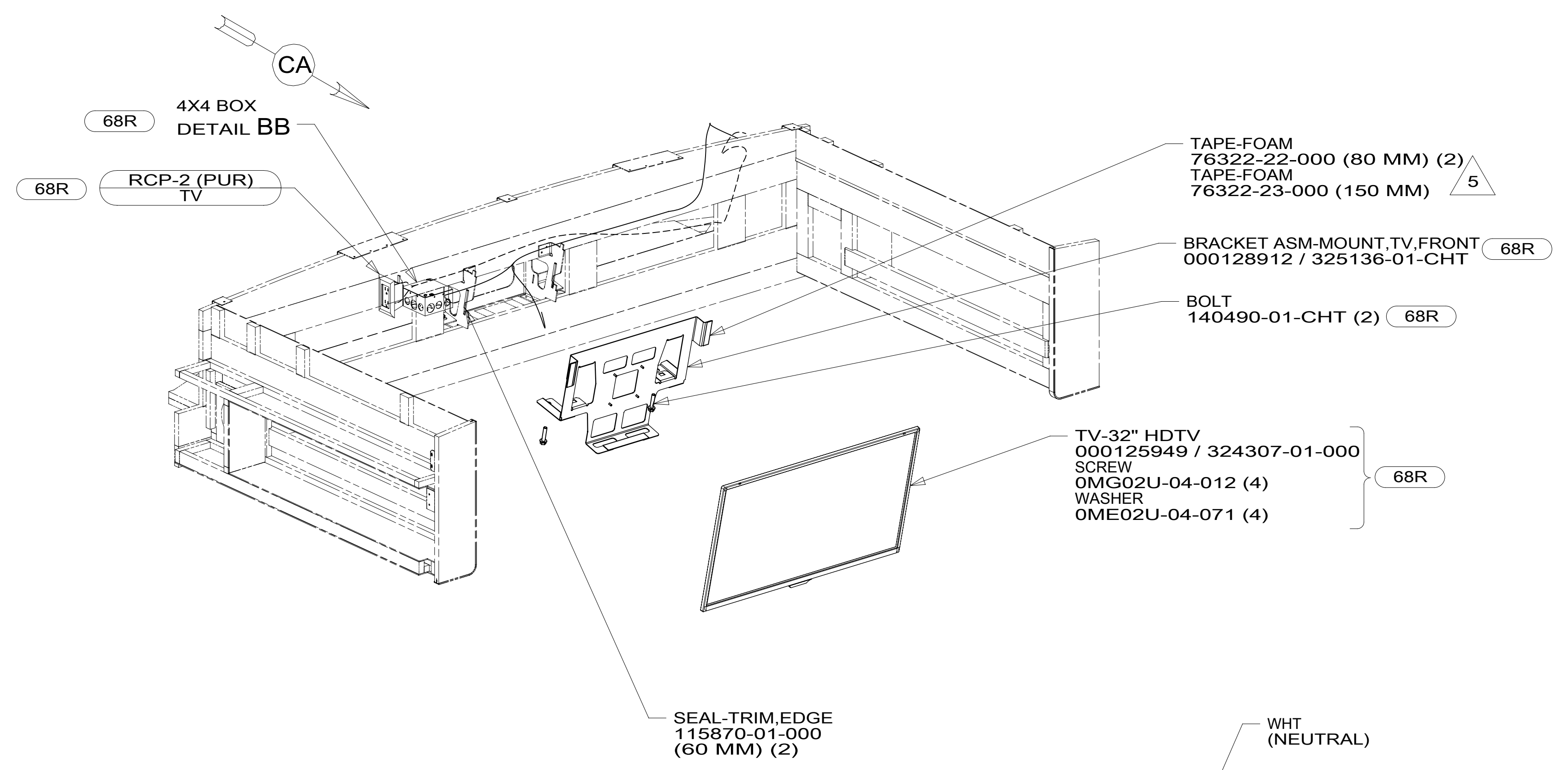
FOR ELECTRICAL TORQUE SPECIFICATIONS SEE DWG NO. 128783-01-000

FOR ELECTRICAL CALLOUTS SEE DWG NO. 121339-01-000



- 4 TAPE IR TRANSMITTER TO BACK OF COVER PANEL 194672-02-CHT USING TAPE 8363-01-000.
3. WHERE WIRES PASS THROUGH HOLES IN STEEL AND NOT OTHERWISE PROTECTED, USE GROMMET 92908-02-000.
2. ALL WIRES TO BE SECURED WITH CLAMP 10495-01-000 OR CLIP 80734-01-000 EVERY 600 MM. USE SCREW G67-10-12U UNLESS OTHERWISE SPECIFIED.
1. 110V WIRE TO BE CLAMPED WITH CLAMP 10497-05-000 WITHIN 200MM OF OUTLET BOXES, USE SCREW G67-10-12U.

NOTES:



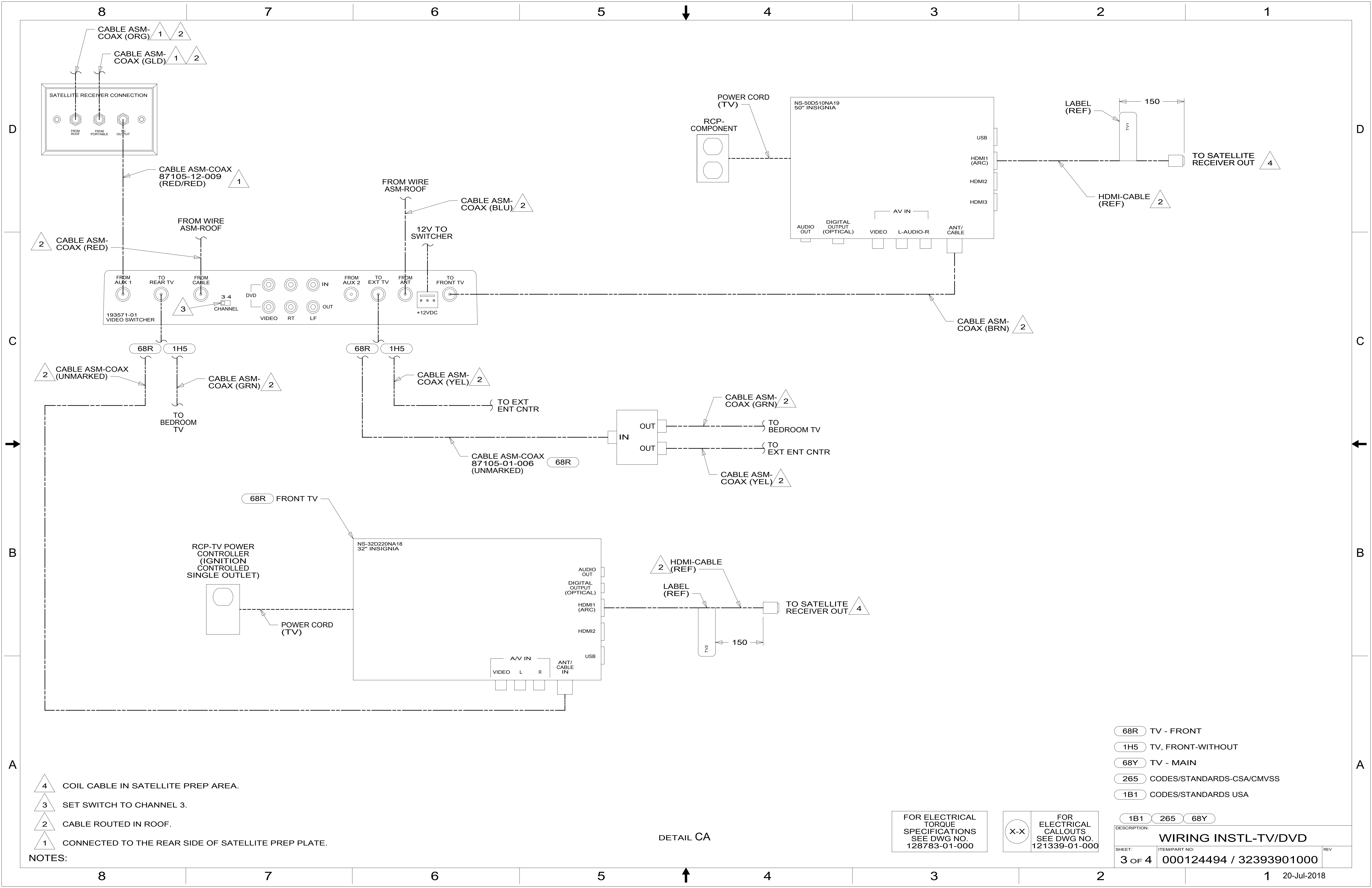
- 6 SEE LOAD CENTER/ATS ASM FOR ADDITIONAL INFORMATION.
- 5 PREP BOTH SURFACES WITH ADHESIVE-PROMOTER, 087211-01-000.
- 4 ROUTE 110V & 12V IN OPPOSITE ENDS OF ELECTRICAL BOX.
3. WHERE WIRES PASS THROUGH HOLES IN STEEL AND NOT OTHERWISE PROTECTED, USE GROMMET 92908-02-000.
2. AT MINIMUM ALL WIRES TO BE SUPPORTED AND SECURED PER CODE REQUIREMENTS. USE CLAMP 10495 OR 10497 OR WIRE TIE 8343 OR 108046 AND SCREW G67-XX-XXX OR G56-XX-XXX AS APPROPRIATE FOR INSTALLATION.
1. 110V WIRE TO BE CLAMPED WITH CLAMP 10497-05-000 WITHIN 200MM OF OUTLET BOXES, USE SCREW G67-10-12B.

FOR ELECTRICAL TORQUE SPECIFICATIONS SEE DWG NO. 128783-01-000

FOR ELECTRICAL CALLOUTS SEE DWG NO. 121339-01-000

- 68Y TV - MAIN
- 68R TV - FRONT
- 265 CODES/STANDARDS-CSA/CMVSS
- 1B1 CODES/STANDARDS USA

DESCRIPTION: <b>WIRING INSTL-TV/DVD</b>	
SHEET: 2 OF 4	ITEM/PART NO: 000124494 / 32393901000
REV 20-Jul-2018	



- NOTES:
- 4 COIL CABLE IN SATELLITE PREP AREA.
  - 3 SET SWITCH TO CHANNEL 3.
  - 2 CABLE ROUTED IN ROOF.
  - 1 CONNECTED TO THE REAR SIDE OF SATELLITE PREP PLATE.

- 68R TV - FRONT
- 1H5 TV, FRONT-WITHOUT
- 68Y TV - MAIN
- 265 CODES/STANDARDS-CSA/CMVSS
- 1B1 CODES/STANDARDS USA

FOR ELECTRICAL TORQUE SPECIFICATIONS SEE DWG NO. 128783-01-000

FOR ELECTRICAL CALLOUTS SEE DWG NO. 121339-01-000

DESCRIPTION:		
1B1 265 68Y		
WIRING INSTL-TV/DVD		
SHEET:	ITEM/PART NO.:	REV
3 OF 4	000124494 / 32393901000	

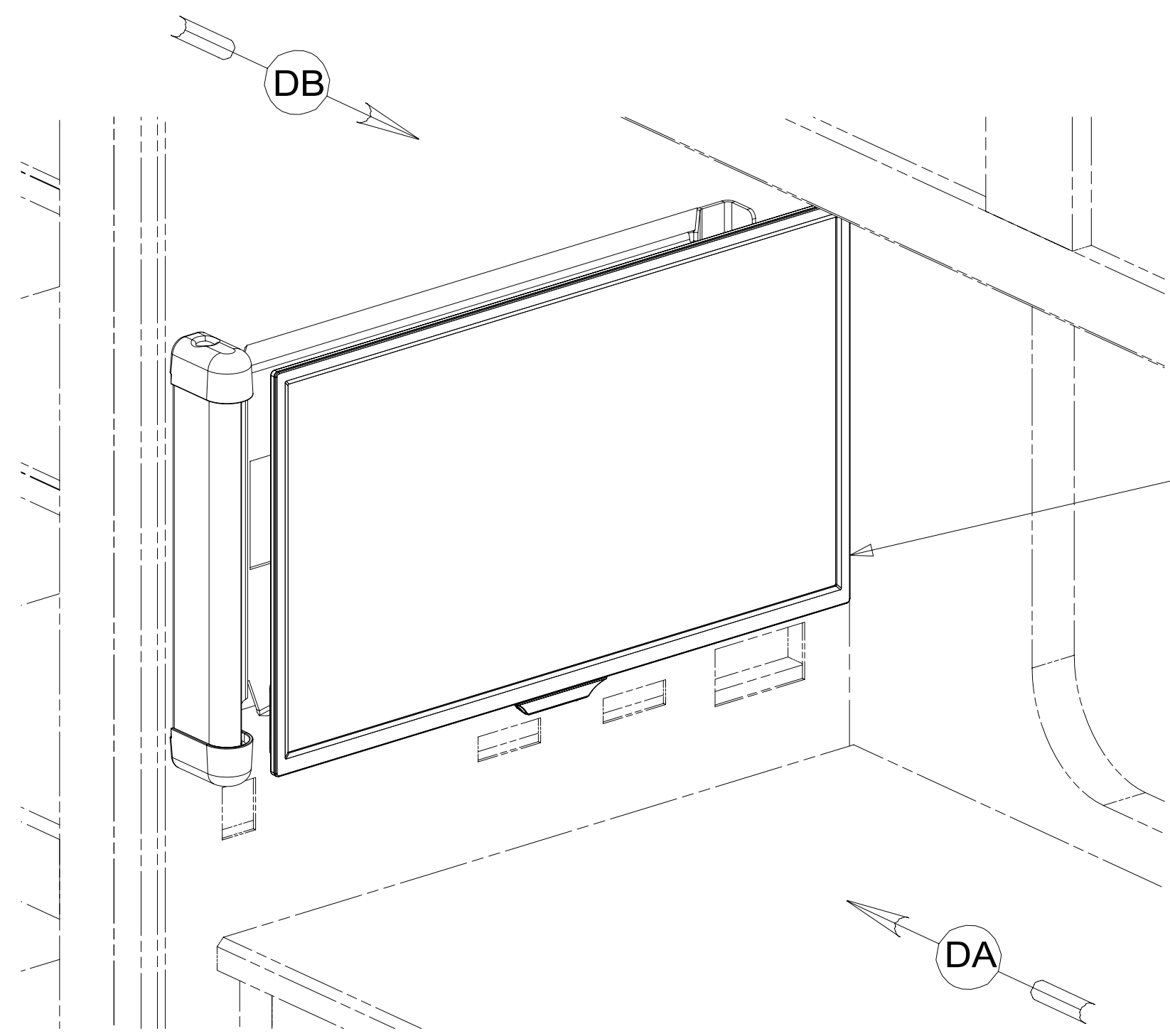
DETAIL CA

8 7 6 5 4 3 2 1

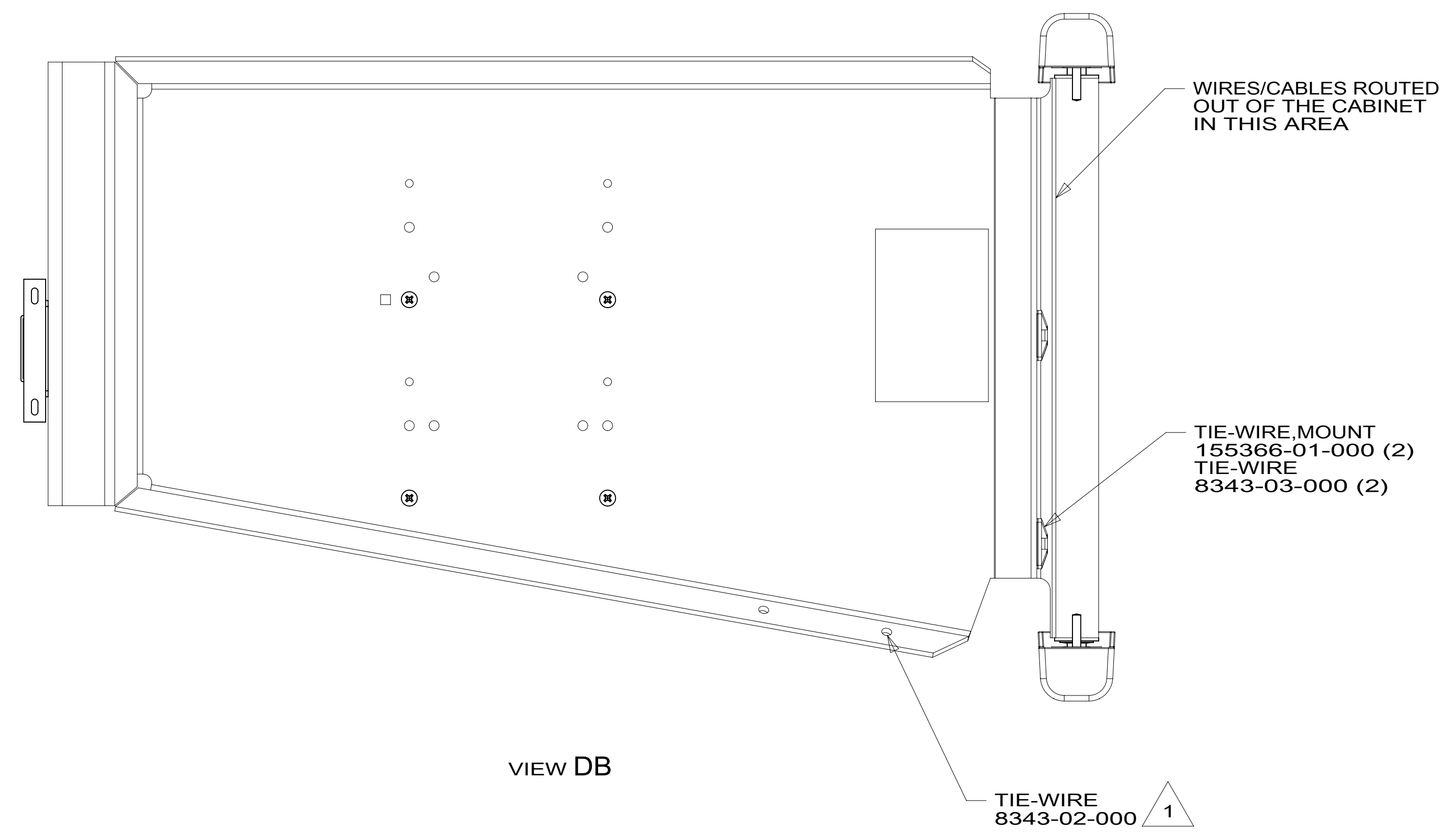


D  
C  
B  
A

D  
C  
B  
A



TV-24" HDTV,INSIGNIA  
000167921 / 330227-01-000  
BRACKET ASM-MOUNT,TV  
000033449 / 317568-01-XXX  
SCREW  
OMG02U-04-012 (4)  
WASHER  
OME02U-04-071 (4)  
SCREW  
G39-10-16U (5)



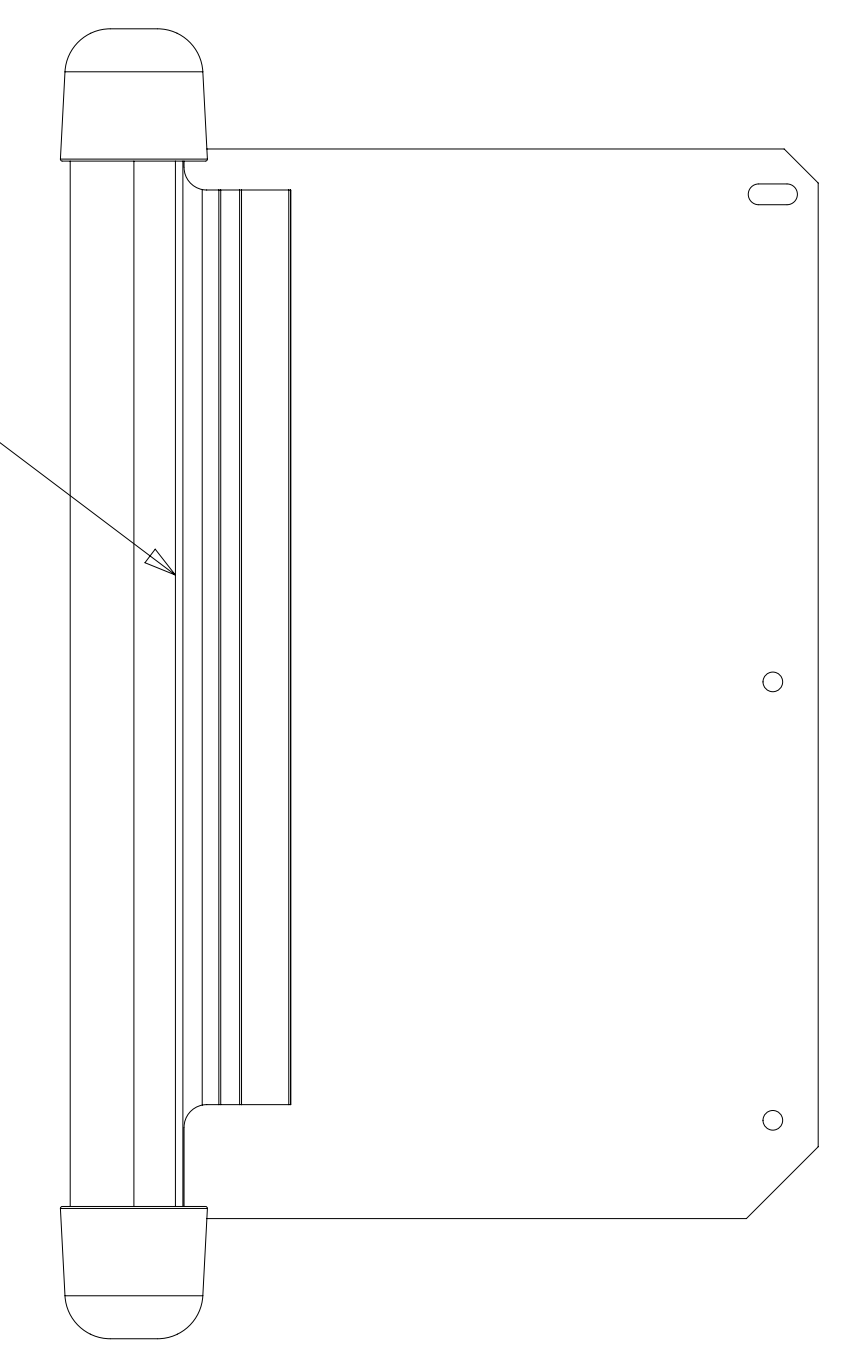
VIEW DB

TIE-WIRE  
8343-02-000 1

WIRES/CABLES ROUTED  
OUT OF THE CABINET  
IN THIS AREA

TIE-WIRE,MOUNT  
155366-01-000 (2)  
TIE-WIRE  
8343-03-000 (2)

MOUNT TV BRACKET SO  
THAT SLOT IN BRACKET  
LINES UP WITH SLOT  
IN CABINET



VIEW DA

1 USE HOLES IN BRACKET ASM-MOUNT,TV TO ATTACH  
WIRE ASM TO BRACKET ASM-MOUNT,TV WITH WIRE TIES.

NOTES:

FOR ELECTRICAL  
TORQUE  
SPECIFICATIONS  
SEE DWG NO.  
128783-01-000

FOR  
ELECTRICAL  
CALLOUTS  
SEE DWG NO.  
121339-01-000

- 68X TV - BEDROOM
- 265 CODES/STANDARDS-CSA/CMVSS
- 1B1 CODES/STANDARDS USA

1B1 265 68X

DESCRIPTION: <b>WIRING INSTL-TV/DVD</b>		
SHEET: <b>4 OF 4</b>	ITEM/PART NO: <b>000124494 / 32393901000</b>	REV

8 7 6 5 4 3 2 1 20-Jul-2018