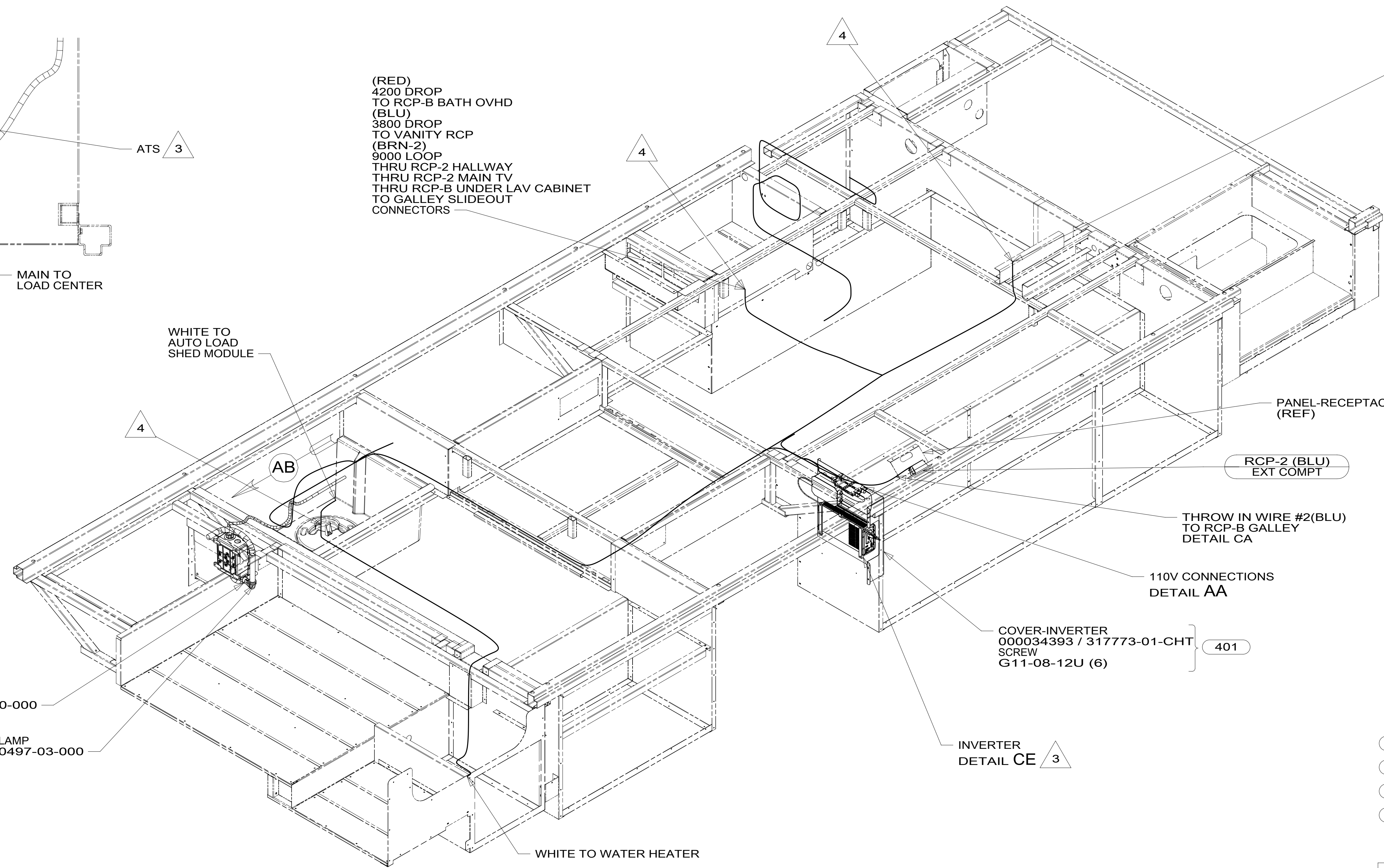


VIEW AB



(RED)
4200 DROP
TO RCP-B BATH OVHD
(BLU)
3800 DROP
TO VANITY RCP
(BRN-2)
9000 LOOP
THRU RCP-2 HALLWAY
THRU RCP-2 MAIN TV
THRU RCP-B UNDER LAV CABINET
TO GALLEY SLIDEOUT
CONNECTORS

(BLU)
1600 LOOP
THRU GALLEY GFI RCP
THRU GALLEY RCP-B
(BLU THROW IN WIRE #2)
1500 DROP
THRU RCP-B GALLEY
DETAIL CA
(BRN-2, YEL, BLK)
1200 DROP
TO SLIDEOUT CONNECTORS
DETAIL DA

WHITE TO
AUTO LOAD
SHED MODULE

CLAMP
10497-10-000

CLAMP
10497-03-000

PANEL-RECEPTACLE
(REF)

RCP-2 (BLU)
EXT COMPT

THROW IN WIRE #2(BLU)
TO RCP-B GALLEY
DETAIL CA

110V CONNECTIONS
DETAIL AA

COVER-INVERTER
000034393 / 317773-01-CHT
SCREW
G11-08-12U (6)

401

INVERTER
DETAIL CE

WHITE TO WATER HEATER

- 401 INVERTER-DC/AC, 1000 WATT
- 12D ELECTRICAL SYSTEM 30 AMP
- 265 CODES/STANDARDS-CSA/CMVSS
- 1B1 CODES/STANDARDS USA



DSNR:		ALL DIMENSIONS ARE IN MILLIMETERS
DIFTR:		
UNSPECIFIED TOLERANCES:		MATERIAL:
WHOLE DIM (X)	: 3	
ONE-PLACE (X.X)	: 1.5	
TWO-PLACE (X.XX)	: 0.50	
ANGLE	: 1°	
REFER TO ES0018 FOR FASTENER TIGHTENING GUIDELINES	WEIGHT: (LBS)	FIRST USED:
		18 E27N

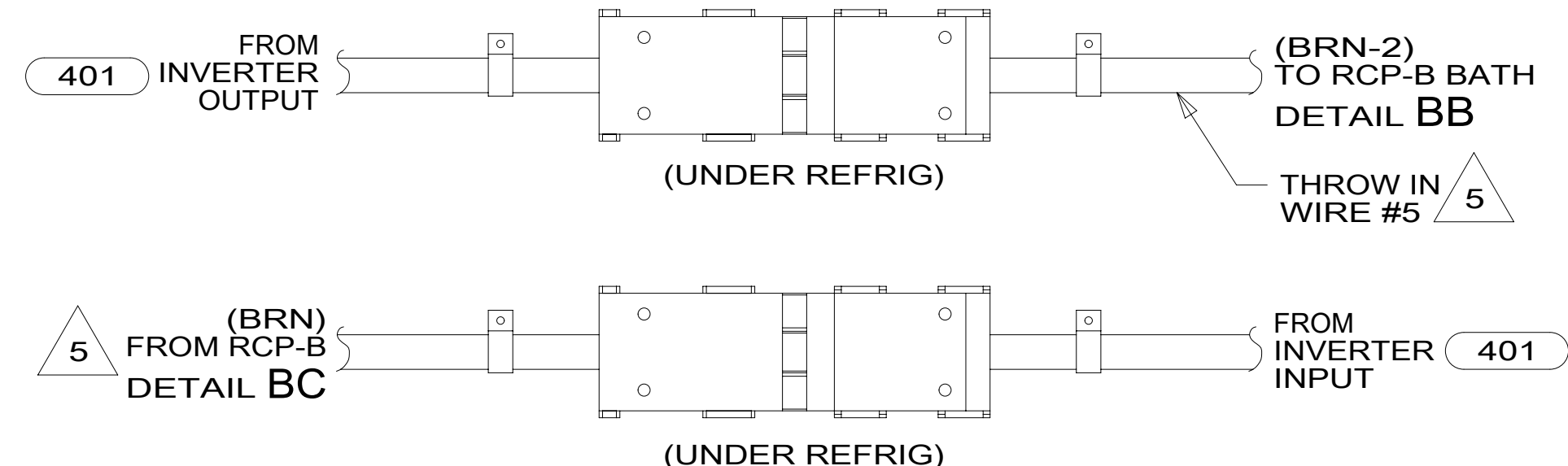
DESCRIPTION:
WIRING INSTL-BODY, 110V

SHEET:	ITEM/PART NO.:	REV:
1 OF 5	000124487 / 32393701000	

- 5 WITHOUT INVERTER THROW IN #2 (BRN-2) CONNECTS TO (BRN) FROM LOAD CENTER.
- 4 WIRE ROUTED THROUGH FLOOR IN THIS AREA.
- 3 SEE LOAD CENTER/ATS ASM FOR ADDITIONAL INFORMATION.

- 2. WIRES ROUTED UNDER FLOOR.
- 1. AT MINIMUM ALL WIRES TO BE SUPPORTED AND SECURED PER CODE REQUIREMENTS. USE CLAMP 10495 OR 10497 OR WIRE TIE 8343 OR 108046 AND SCREW G67-XX-XXX OR G56-XX-XXX AS APPROPRIATE FOR INSTALLATION.

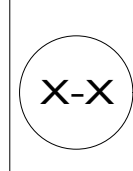
NOTES:

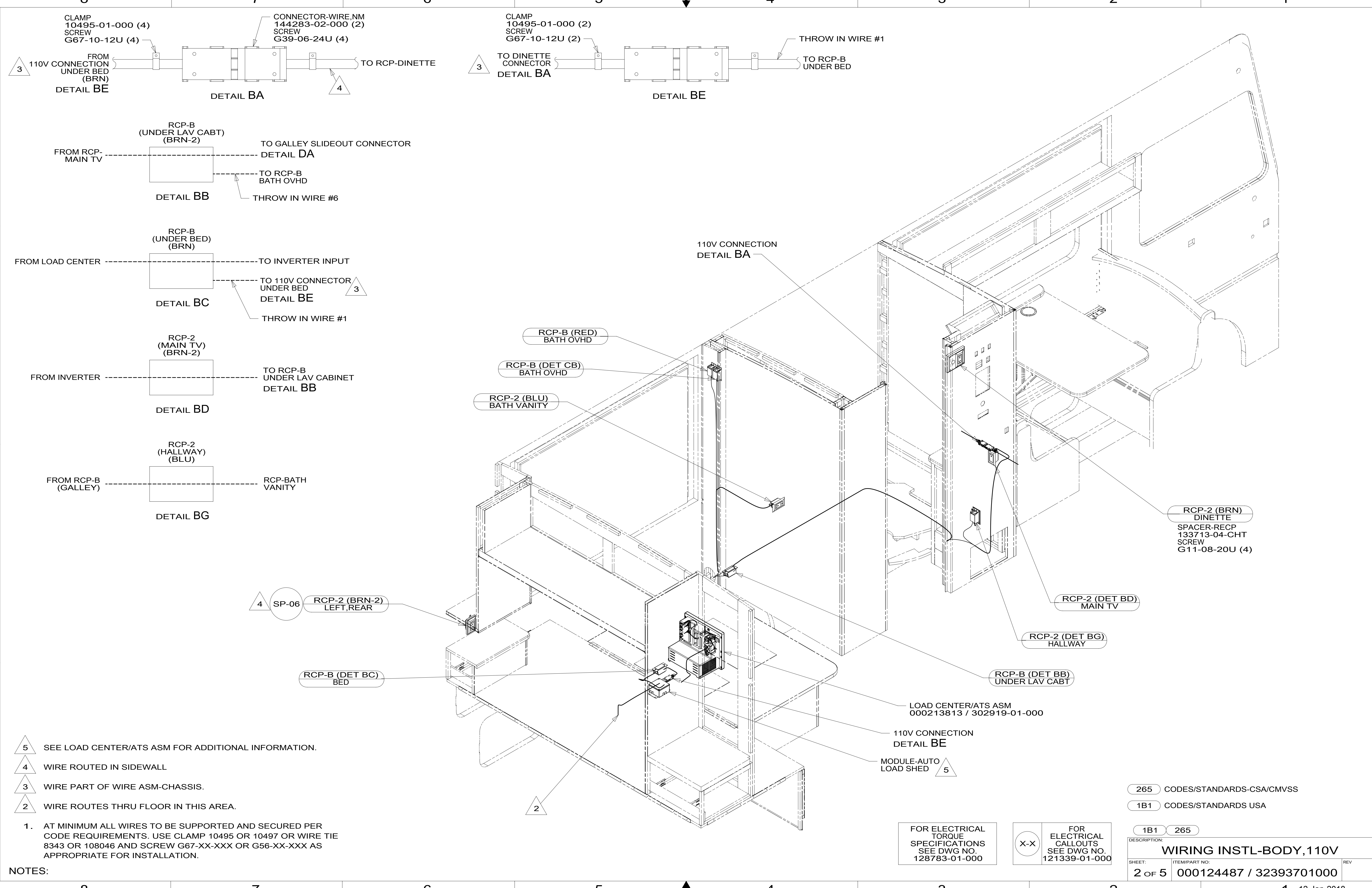


DETAIL AA

FOR ELECTRICAL TORQUE SPECIFICATIONS SEE DWG NO. 128783-01-000

FOR ELECTRICAL CALLOUTS SEE DWG NO. 121339-01-000





- 5 SEE LOAD CENTER/ATS ASM FOR ADDITIONAL INFORMATION.
- 4 WIRE ROUTED IN SIDEWALL
- 3 WIRE PART OF WIRE ASM-CHASSIS.
- 2 WIRE ROUTES THRU FLOOR IN THIS AREA.

1. AT MINIMUM ALL WIRES TO BE SUPPORTED AND SECURED PER CODE REQUIREMENTS. USE CLAMP 10495 OR 10497 OR WIRE TIE 8343 OR 108046 AND SCREW G67-XX-XXX OR G56-XX-XXX AS APPROPRIATE FOR INSTALLATION.

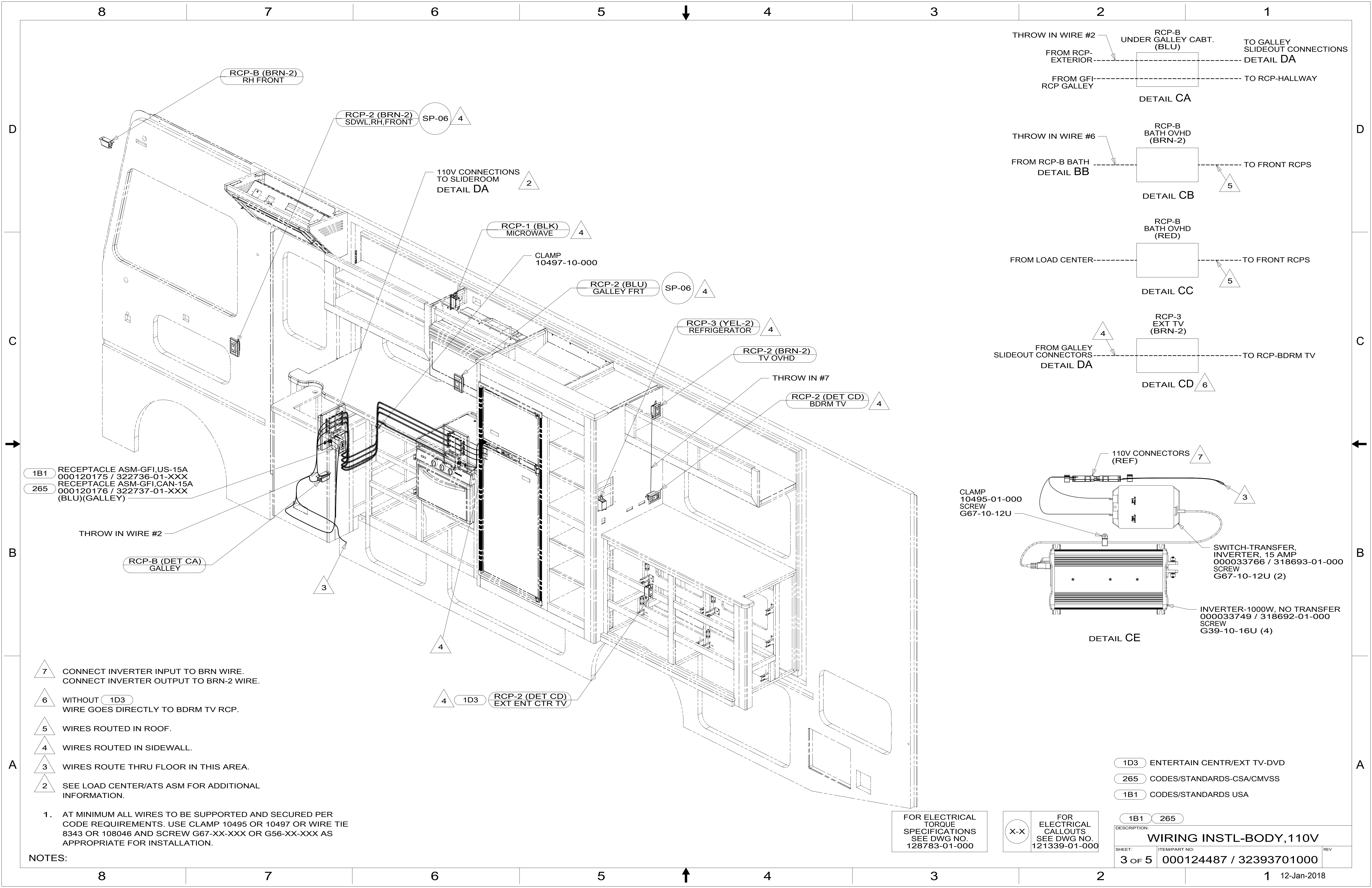
NOTES:

FOR ELECTRICAL TORQUE SPECIFICATIONS SEE DWG NO. 128783-01-000

FOR ELECTRICAL CALLOUTS SEE DWG NO. 121339-01-000

- 265 CODES/STANDARDS-CSA/CMVSS
- 1B1 CODES/STANDARDS USA

DESCRIPTION:		1B1 265	
WIRING INSTL-BODY, 110V			
SHEET:	ITEM/PART NO.:	REV	
2 OF 5	000124487 / 32393701000		



RCP-B (BRN-2)
RH FRONT

RCP-2 (BRN-2)
SDWL,RH,FRONT

SP-06 4

110V CONNECTIONS
TO SLIDEROOM
DETAIL DA

RCP-1 (BLK)
MICROWAVE

CLAMP
10497-10-000

RCP-2 (BLU)
GALLEY FRT

RCP-3 (YEL-2)
REFRIGERATOR

RCP-2 (BRN-2)
TV OVHD

RCP-2 (DET CD)
BDRM TV

1B1 RECEPTACLE ASM-GFI,US-15A
000120175 / 322736-01-XXX
265 RECEPTACLE ASM-GFI,CAN-15A
000120176 / 322737-01-XXX
(BLU)(GALLEY)

THROW IN WIRE #2

RCP-B (DET CA)
GALLEY

THROW IN WIRE #2
FROM RCP-
EXTERIOR

RCP-B
UNDER
GALLEY CABT.
(BLU)

TO GALLEY
SLIDEOUT CONNECTIONS
DETAIL DA

FROM GFI-
RCP GALLEY

TO RCP-HALLWAY

DETAIL CA

THROW IN WIRE #6

FROM RCP-B BATH
DETAIL BB

RCP-B
BATH OVHD
(BRN-2)

TO FRONT RCPS

DETAIL CB

FROM LOAD CENTER

RCP-B
BATH OVHD
(RED)

TO FRONT RCPS

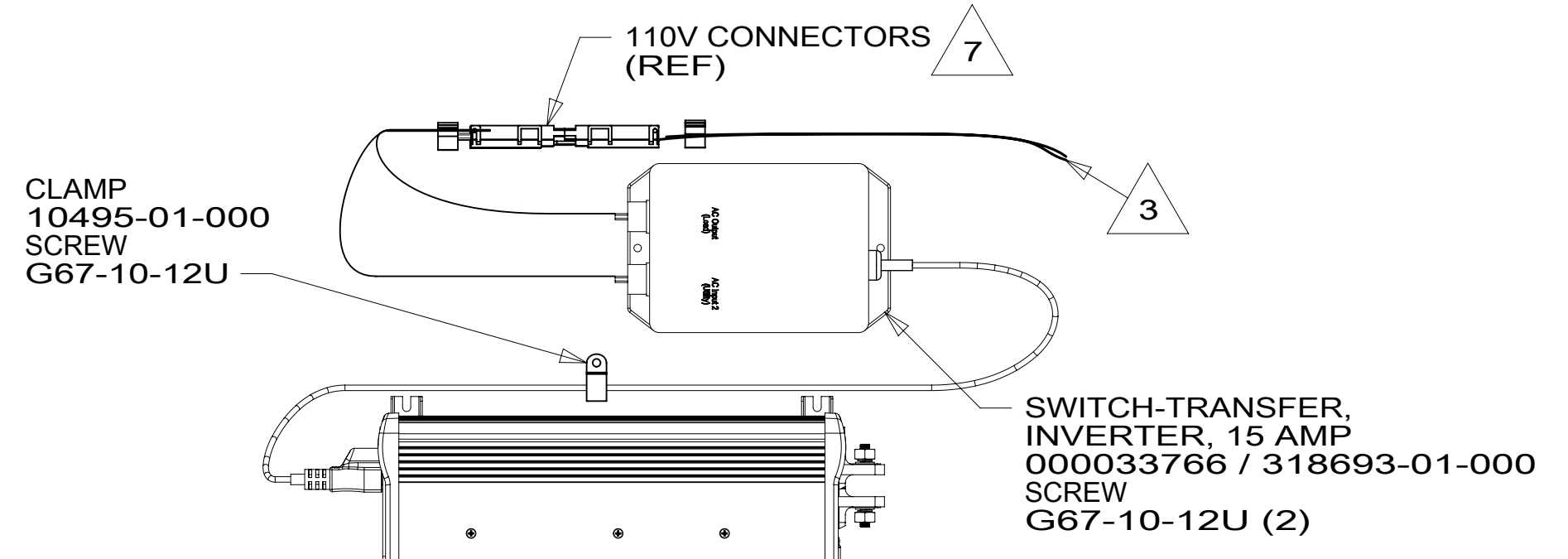
DETAIL CC

FROM GALLEY
SLIDEOUT
CONNECTORS
DETAIL DA

RCP-3
EXT TV
(BRN-2)

TO RCP-BDRM TV

DETAIL CD



DETAIL CE

7 CONNECT INVERTER INPUT TO BRN WIRE.
CONNECT INVERTER OUTPUT TO BRN-2 WIRE.

6 WITHOUT 1D3
WIRE GOES DIRECTLY TO BDRM TV RCP.

5 WIRES ROUTED IN ROOF.

4 WIRES ROUTED IN SIDEWALL.

3 WIRES ROUTE THRU FLOOR IN THIS AREA.

2 SEE LOAD CENTER/ATS ASM FOR ADDITIONAL
INFORMATION.

1. AT MINIMUM ALL WIRES TO BE SUPPORTED AND SECURED PER
CODE REQUIREMENTS. USE CLAMP 10495 OR 10497 OR WIRE TIE
8343 OR 108046 AND SCREW G67-XX-XXX OR G56-XX-XXX AS
APPROPRIATE FOR INSTALLATION.

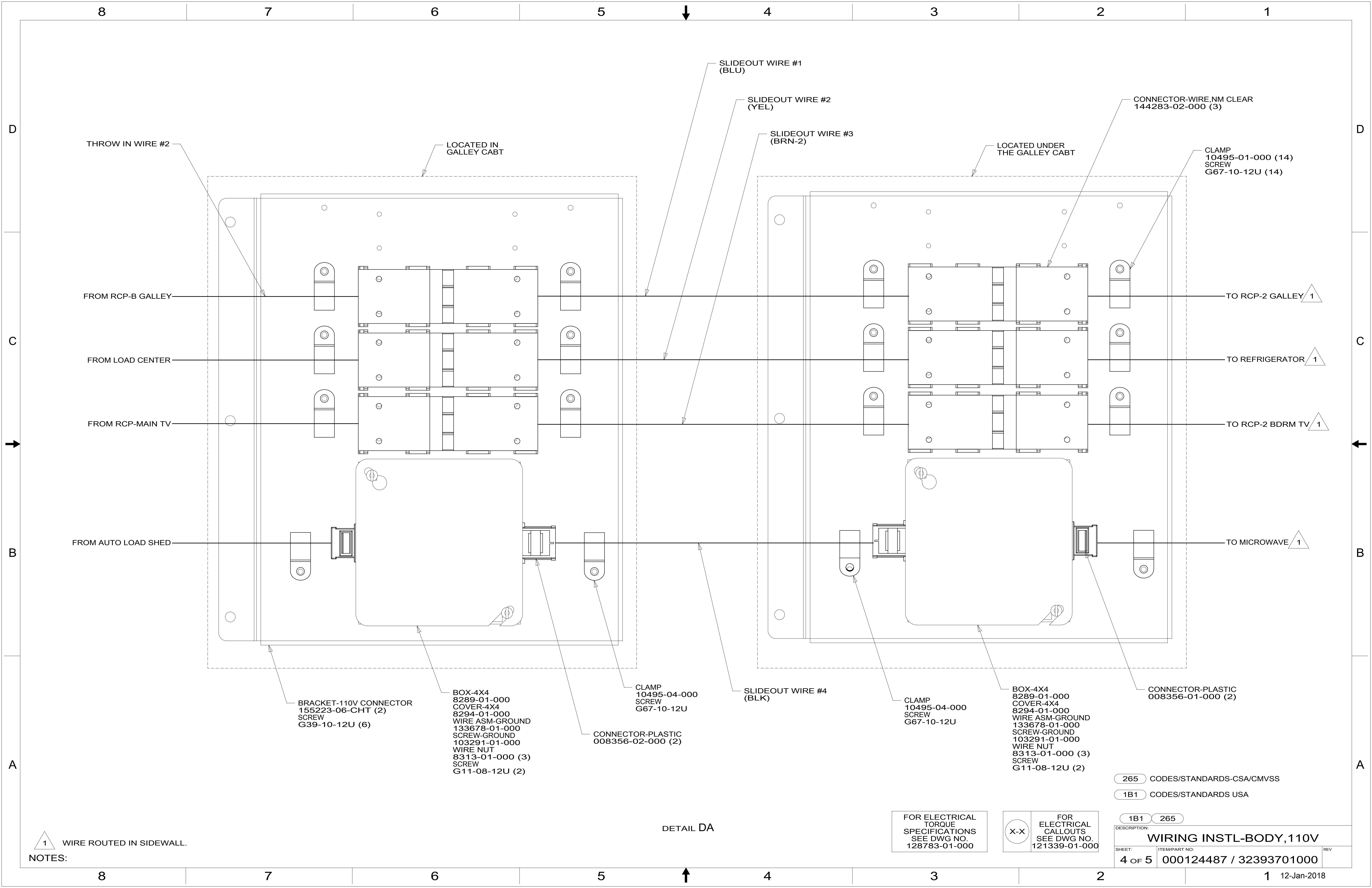
NOTES:

FOR ELECTRICAL
TORQUE
SPECIFICATIONS
SEE DWG NO.
128783-01-000

FOR
ELECTRICAL
CALLOUTS
SEE DWG NO.
121339-01-000

- 1D3 ENTERTAIN CENTR/EXT TV-DVD
- 265 CODES/STANDARDS-CSA/CMVSS
- 1B1 CODES/STANDARDS USA

DESCRIPTION:		1B1 265	
WIRING INSTL-BODY, 110V			
SHEET:	ITEM/PART NO.:	REV:	
3 OF 5	000124487 / 32393701000		



THROW IN WIRE #2

LOCATED IN GALLEY CABT

SLIDEOUT WIRE #1 (BLU)

SLIDEOUT WIRE #2 (YEL)

SLIDEOUT WIRE #3 (BRN-2)

LOCATED UNDER THE GALLEY CABT

CONNECTOR-WIRE,NM CLEAR 144283-02-000 (3)

CLAMP 10495-01-000 (14)
SCREW G67-10-12U (14)

FROM RCP-B GALLEY

TO RCP-2 GALLEY 1

FROM LOAD CENTER

TO REFRIGERATOR 1

FROM RCP-MAIN TV

TO RCP-2 BDRM TV 1

FROM AUTO LOAD SHED

TO MICROWAVE 1

BRACKET-110V CONNECTOR 155223-06-CHT (2)
SCREW G39-10-12U (6)

BOX-4X4 8289-01-000
COVER-4X4 8294-01-000
WIRE ASM-GROUND 133678-01-000
SCREW-GROUND 103291-01-000
WIRE NUT 8313-01-000 (3)
SCREW G11-08-12U (2)

CONNECTOR-PLASTIC 008356-02-000 (2)

CLAMP 10495-04-000
SCREW G67-10-12U

SLIDEOUT WIRE #4 (BLK)

CLAMP 10495-04-000
SCREW G67-10-12U

BOX-4X4 8289-01-000
COVER-4X4 8294-01-000
WIRE ASM-GROUND 133678-01-000
SCREW-GROUND 103291-01-000
WIRE NUT 8313-01-000 (3)
SCREW G11-08-12U (2)

CONNECTOR-PLASTIC 008356-01-000 (2)

265 CODES/STANDARDS-CSA/CMVSS

1B1 CODES/STANDARDS USA

1B1 265

FOR ELECTRICAL TORQUE SPECIFICATIONS SEE DWG NO. 128783-01-000

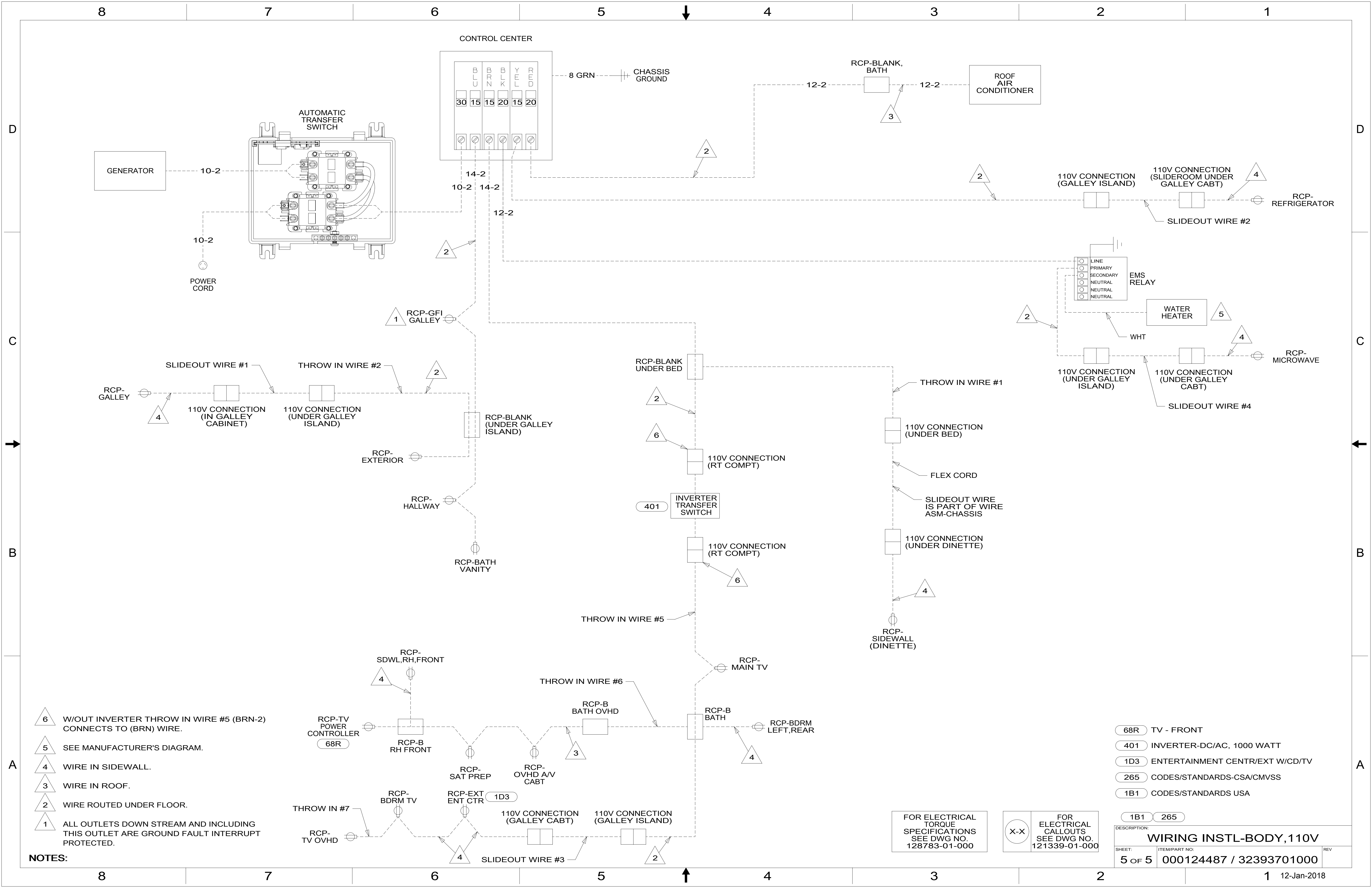
FOR ELECTRICAL CALLOUTS SEE DWG NO. 121339-01-000

DESCRIPTION: WIRING INSTL-BODY, 110V

SHEET: 4 OF 5 ITEM/PART NO.: 000124487 / 32393701000 REV

NOTES: 1 WIRE ROUTED IN SIDEWALL.

DETAIL DA



- NOTES:**
- 6 W/O INVERTER THROW IN WIRE #5 (BRN-2) CONNECTS TO (BRN) WIRE.
 - 5 SEE MANUFACTURER'S DIAGRAM.
 - 4 WIRE IN SIDEWALL.
 - 3 WIRE IN ROOF.
 - 2 WIRE ROUTED UNDER FLOOR.
 - 1 ALL OUTLETS DOWN STREAM AND INCLUDING THIS OUTLET ARE GROUND FAULT INTERRUPT PROTECTED.

- 68R TV - FRONT
- 401 INVERTER-DC/AC, 1000 WATT
- 1D3 ENTERTAINMENT CENTR/EXT W/CD/TV
- 265 CODES/STANDARDS-CSA/CMVSS
- 1B1 CODES/STANDARDS USA

FOR ELECTRICAL TORQUE SPECIFICATIONS SEE DWG NO. 128783-01-000

FOR ELECTRICAL CALLOUTS SEE DWG NO. 121339-01-000

DESCRIPTION: WIRING INSTL-BODY, 110V		
SHEET: 5 OF 5	ITEM/PART NO: 000124487 / 32393701000	REV
12-Jan-2018		