

8

7

6

5



4

3

2

1

D

D

C

C

B

B

A

A

CABLE ASM-CHASSIS BATTERY (RED)	192678-02-000
CABLE ASM-COACH BATTERY (YEL)	141415-59-025
CABLE ASM-COACH BATTERY GND (BLK)	133566-12-012
CABLE ASM-GENERATOR (GRN)	141415-42-055
CABLE ASM-GENERATOR GND (BLK)	133566-12-020
CABLE ASM-JUMPER,POS	141415-59-035
CABLE ASM-JUMPER,NEG	133566-12-035
CABLE ASM-INVERTER FUSE (ORG)	141415-61-002
CABLE ASM-INVERTER (ORG)	141415-66-032
CABLE ASM-INVERTER GND (BLK)	133567-12-058
CABLE ASM-INVERTER CASE GND (GRN)	136145-05-020

265 CODES/STANDARDS-CSA/CMVSS

1B1 CODES/STANDARDS USA

1B1 265



COPYRIGHT 2016 WINNEBAGO INDUSTRIES, INC.

DSNR:		ALL DIMENSIONS ARE IN MILLIMETERS	
DFFR:		MATERIAL:	
UNSPECIFIED TOLERANCES:			
WHOLE DIM (X)	: 3		
ONE-PLACE (X.X)	: 1.5		
TWO-PLACE (X.XX)	: 0.50		
ANGLE	: 1°		

REFER TO ES0018 FOR FASTENER TIGHTENING GUIDELINES	WEIGHT: (LBS)	FIRST USED:
		18 170M

DESCRIPTION:		
BATTERY INSTL		

SHEET:	ITEM/PART NO:	REV
1 OF 4	000124312 / 32387501000	

REF: 1 20-Sep-2018

FOR ELECTRICAL TORQUE SPECIFICATIONS SEE DWG NO. 128783-01-000

FOR ELECTRICAL CALLOUTS SEE DWG NO. 121339-01-000

8

7

6

5



4

3

2

1

CABLE ASM-CHASSIS BATTERY (RED) TO CHASSIS BATTERY

CABLE ASM-GENERATOR (GRN) TO BATT. DISCONNECT

CABLE ASM-COACH BATTERY (YEL) TO BATT. MODE SOLENOID

CABLE ASM-CHASSIS BATTERY (RED) TO BATT. MODE SOLENOID

CABLE ASM-COACH BATTERY POS (YEL)

TO INVERTER

CABLE ASM-INVERTER (ORG)

CABLE ASM-INVERTER FUSE (ORG)

CABLE ASM-COACH BATTERY GND (BLK)

CABLE ASM-COACH BATTERY GND (BLK) AND CABLE ASM-GENERATOR GND (BLK) AND CABLE ASM-INVERTER CASE GND (GRN) TO GROUND BOLT

CABLE ASM-INVERTER GND (BLK)

CLAMP 083609-01-000 (5)  
SCREW G39-10-12U (5)

CABLE ASM-GENERATOR (GRN) TO GENERATOR

CABLE ASM-GENERATOR GND (BLK) TO GENERATOR

- 7 CABLES ROUTED THROUGH FLOOR IN THIS AREA.
- 6 ROUTE CABLES OVER EXHAUST HEAT SHIELD AND DRIVETRAIN. SECURE CABLES SO THAT THEY DO NOT CONTACT HEAT SHIELD AND DRIVETRAIN.
- 5 USE CLAMPS TO SECURE CABLES TO CROSSMEMBERS. KEEP CABLES CLEAR FROM EXHAUST AND DRIVETRAIN.
- 4 CABLES ROUTED THROUGH TROUGH BETWEEN CAB SEATS IN THIS AREA.
- 3 ROUTE CABLES THROUGH GROMMET UNDER DRIVERS SEAT.

- 2. SEE WIRING INSTL-CHASSIS FOR ADDITIONAL INFORMATION.
- 1. AT MINIMUM ALL WIRES TO BE SUPPORTED AND SECURED PER CODE REQUIREMENTS. USE CLAMP 10495 OR 10497 OR WIRE TIE 8343 OR 108046 AND SCREW G67-XX-XXX OR G56-XX-XXX AS APPROPRIATE FOR INSTALLATION.

NOTES:

FOR ELECTRICAL TORQUE SPECIFICATIONS SEE DWG NO. 128783-01-000

FOR ELECTRICAL CALLOUTS SEE DWG NO. 121339-01-000

265 CODES/STANDARDS-CSA/CMVSS  
1B1 CODES/STANDARDS USA

DESCRIPTION:	1B1 265	
<b>BATTERY INSTL</b>		
SHEET:	ITEM/PART NO:	REV
2 OF 4	000124312 / 32387501000	

8 7 6 5 4 3 2 1

D

D

C

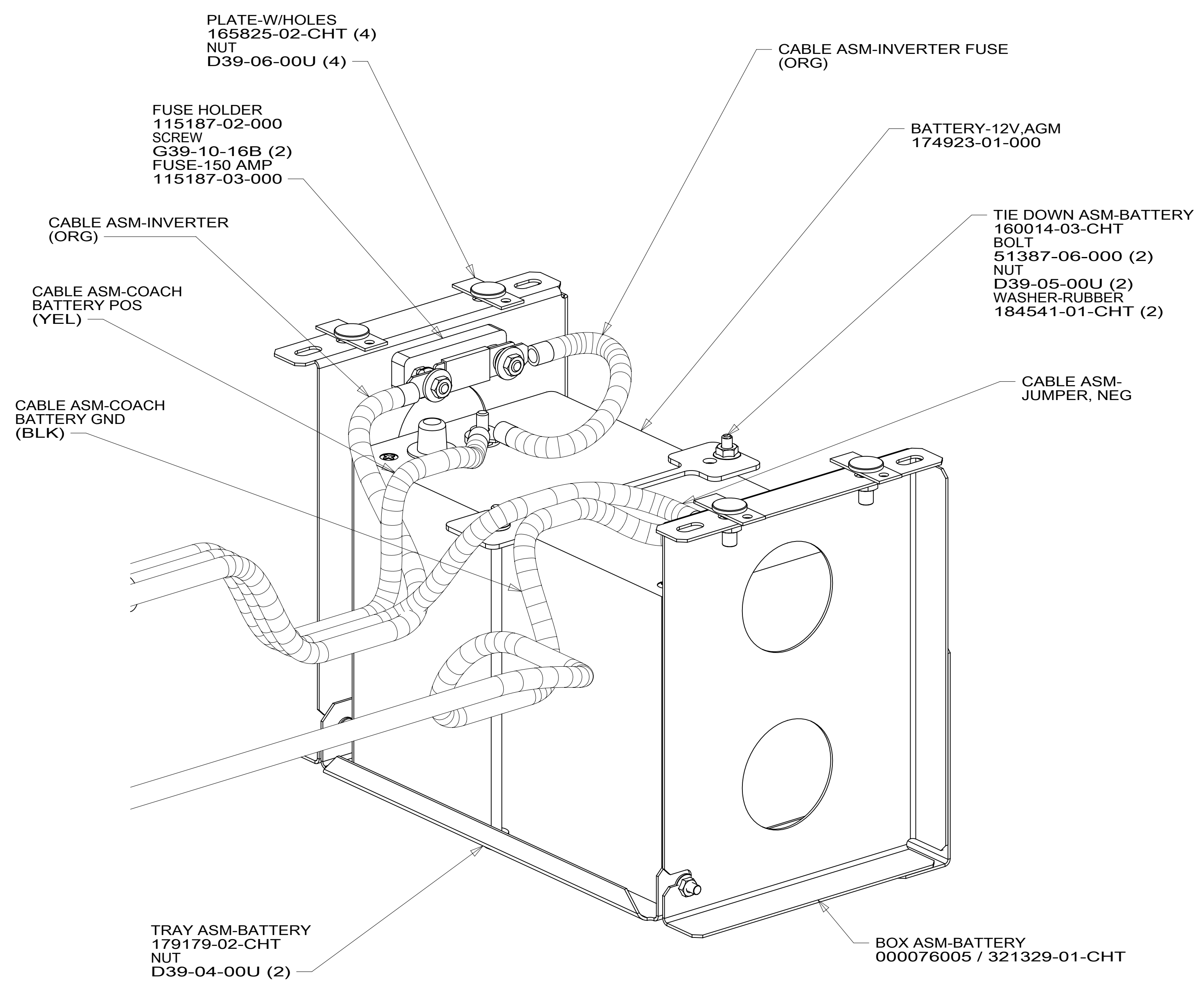
C

B

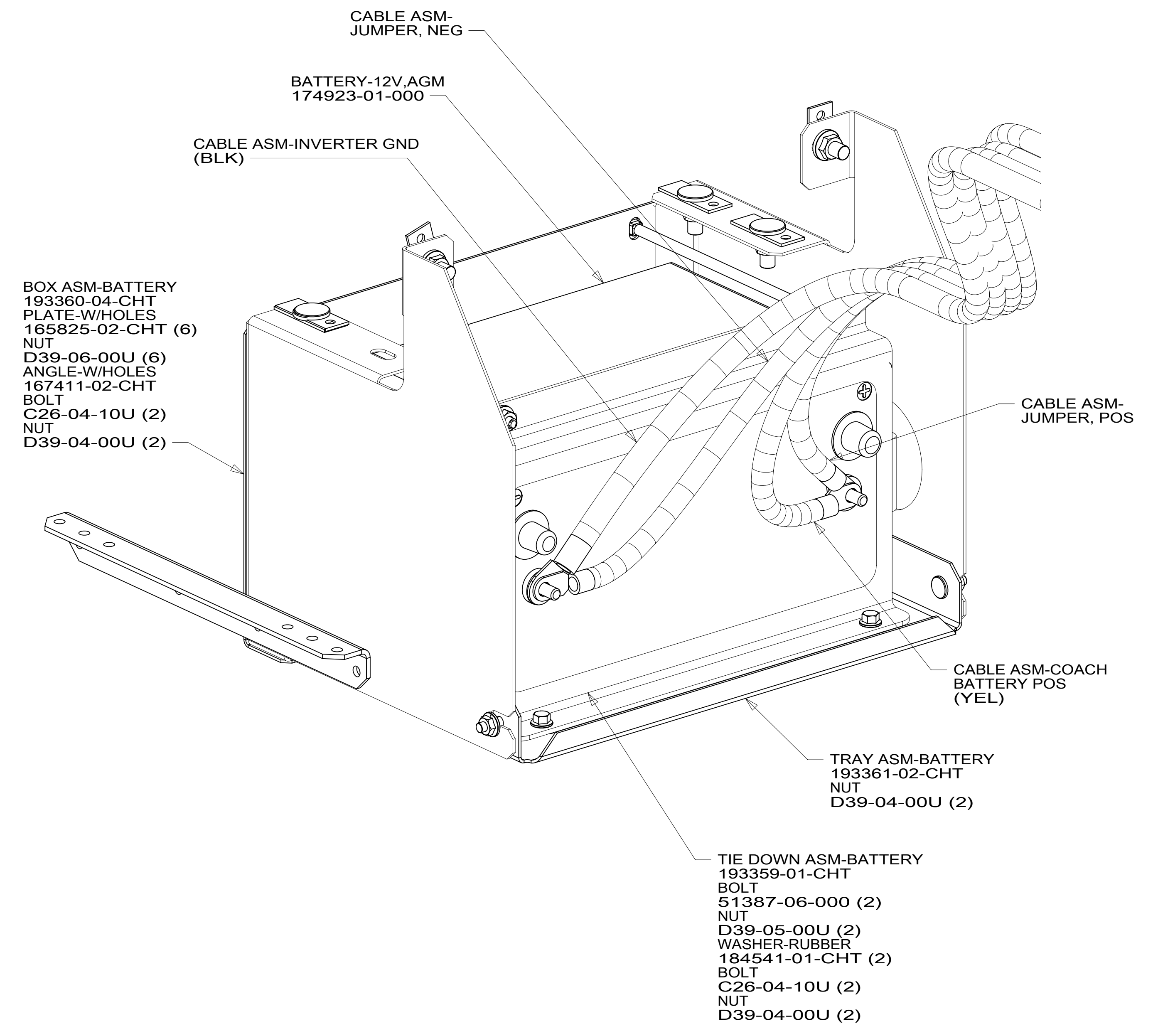
B

A

A



VIEW CA



VIEW CB

2. SEE WIRING INSTL-CHASSIS FOR ADDITIONAL INFORMATION.

1. AT MINIMUM ALL WIRES TO BE SUPPORTED AND SECURED PER CODE REQUIREMENTS. USE CLAMP 10495 OR 10497 OR WIRE TIE 8343 OR 108046 AND SCREW G67-XX-XXX OR G56-XX-XXX AS APPROPRIATE FOR INSTALLATION.

NOTES:

265 CODES/STANDARDS-CSA/CMVSS  
1B1 CODES/STANDARDS USA

FOR ELECTRICAL TORQUE SPECIFICATIONS SEE DWG NO. 128783-01-000

FOR ELECTRICAL CALLOUTS SEE DWG NO. 121339-01-000

DESCRIPTION:	1B1 265	
<b>BATTERY INSTL</b>		
SHEET:	ITEM/PART NO:	REV
3 OF 4	000124312 / 32387501000	

8 7 6 5 4 3 2 1 20-Sep-2018





NUT  
OMD29K-08-000

CABLE ASM-  
CHASSIS BATTERY

VIEW DA

2. SEE WIRING INSTL-CHASSIS FOR ADDITIONAL INFORMATION.
1. AT MINIMUM ALL WIRES TO BE SUPPORTED AND SECURED PER CODE REQUIREMENTS. USE CLAMP 10495 OR 10497 OR WIRE TIE 8343 OR 108046 AND SCREW G67-XX-XXX OR G56-XX-XXX AS APPROPRIATE FOR INSTALLATION.

NOTES:

265 CODES/STANDARDS-CSA/CMVSS  
1B1 CODES/STANDARDS USA

FOR ELECTRICAL  
TORQUE  
SPECIFICATIONS  
SEE DWG NO.  
128783-01-000

FOR  
ELECTRICAL  
CALLOUTS  
SEE DWG NO.  
121339-01-000

1B1 265	
DESCRIPTION: <b>BATTERY INSTL</b>	
SHEET: 4 OF 4	ITEM/PART NO: 000124312 / 32387501000