

D

D

C

C

B

B

A

A

INLET-30A,125V,EXTERIOR
000037518 / 318581-01-CHT
BRACKET-PLUG
168924-01-CHT
SCREW
000G11-07-12U (4)

RCP-2 (BLU)
GALLEY,REAR

RCP-2 (YEL)
CAB OVHD

TO RIGHT SIDE

3 4 ATS ASM
000017748 / 313448-01-000

J-GEN
30

CONNECTOR
093256-01-000

1B1 RECEPTACLE ASM-GFI,US-20A
000120177 / 322738-01-XXX
265 RECEPTACLE ASM-GFI,CAN-20A
000120178 / 322739-01-XXX
(WHT) (HEATER)
PANEL-RCP,GFCI
188004-03-CHT
SCREW
G67-10-10U (2)

RECEPTACLE ASM-GFI,US-15A 1B1
000120175 / 322736-01-XXX
RECEPTACLE ASM-GFI,CAN-15A 265
000120176 / 322737-01-XXX
(BLU) (GALLEY)

INVERTER
DETAIL CA

RCP-3 (BLK)
MICROWAVE

TO GENERATOR

GROMMET
23942-01-000

- 12D ELECTRICAL SYSTEM 30 AMP
- 265 CODES/STANDARDS-CSA/CMVSS
- 1B1 CODES/STANDARDS USA

1B1 265 12D



DSNR:	ALL DIMENSIONS ARE IN MILLIMETERS	
DFFR:	MATERIAL:	
UNSPECIFIED TOLERANCES:		
WHOLE DIM (X)	: 3	
ONE-PLACE (X.X)	: 1.5	
TWO-PLACE (X.XX)	: 0.50	
ANGLE	: 1°	
REFER TO ES0018 FOR FASTENER TIGHTENING GUIDELINES	WEIGHT: (LBS)	FIRST USED:
		18 170X

WIRING INSTL-BODY,110V

SHEET:	ITEM/PART NO.:	REV:
1 OF 5	000123710 / 32389001000	

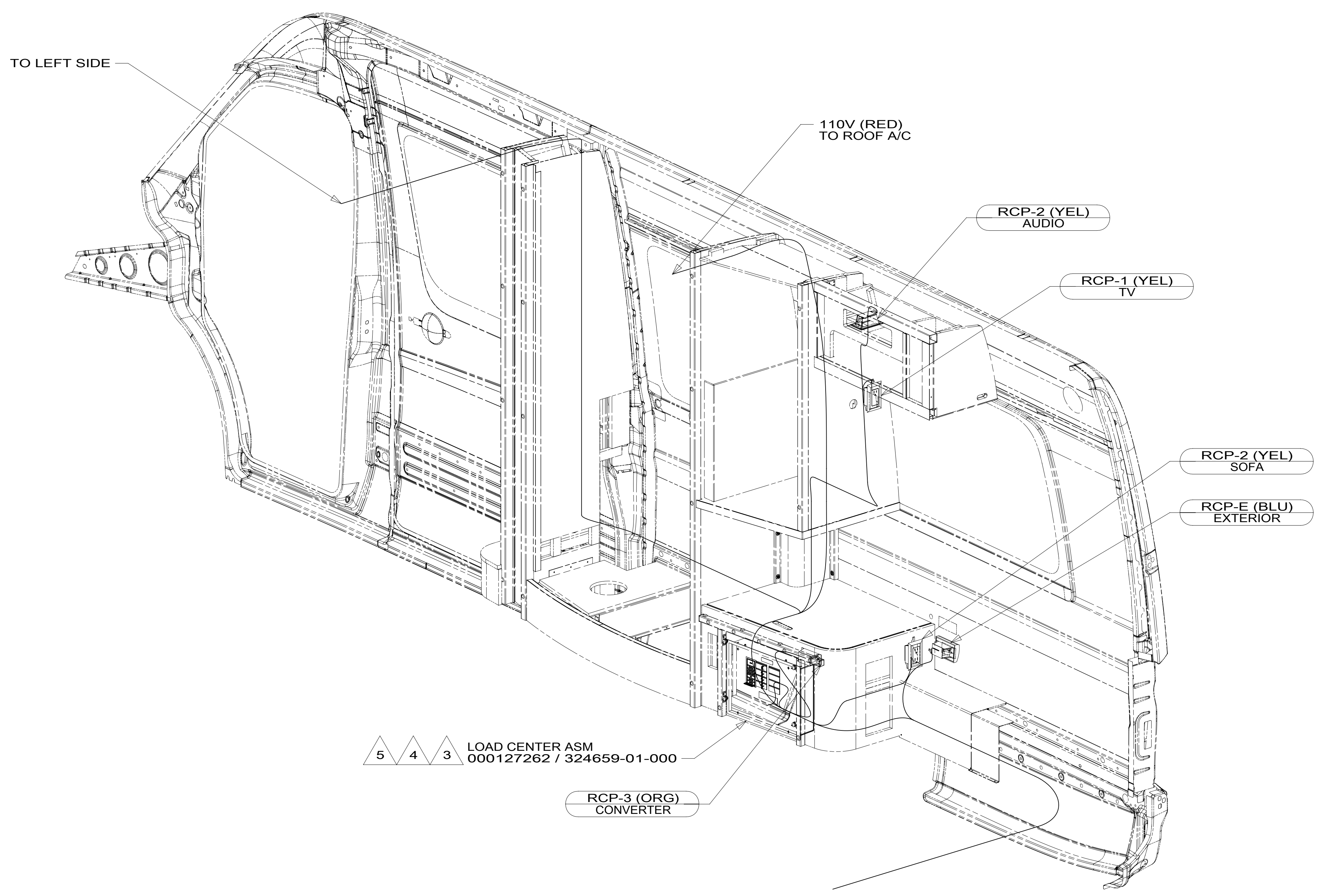
FOR ELECTRICAL TORQUE SPECIFICATIONS SEE DWG NO. 128783-01-000

FOR ELECTRICAL CALLOUTS SEE DWG NO. 121339-01-000

- NOTES:
4. GROUND WIRES (8 GA WIRE) FROM LOAD CENTER AND ATS ROUTES THROUGH FLOOR TO GROUND BOLT UNDER DRIVER'S SEAT.
 3. LOAD CENTER AND ATS GROUND WIRES MUST BE ATTACHED DIRECTLY TO CHASSIS GROUND.
 2. ALL 110V WIRES TO BE CLAMPED WITH CLAMP 10497-05-000 WITHIN 200MM OF OUTLET BOXES, USE SCREW G67-10-12B.
 1. AT MINIMUM ALL WIRES TO BE SUPPORTED AND SECURED PER CODE REQUIREMENTS. USE CLAMP 10495 OR 10497 OR WIRE TIE 8343 OR 108046 AND SCREW G67-XX-XXX OR G56-XX-XXX AS APPROPRIATE FOR INSTALLATION.

8 7 6 5 4 3 2 1

D
C
B
A



- 5 LOAD CENTER AND ATS GROUND WIRES MUST BE ATTACHED DIRECTLY TO CHASSIS GROUND.
- 4 GROUND WIRES (8 GA WIRE) FROM LOAD CENTER AND ATS ROUTES THROUGH FLOOR TO GROUND BOLT UNDER DRIVER'S SEAT.
- 3 SEE SHEET 4 FOR ADDITIONAL INFORMATION.
2. ALL 110V WIRES TO BE CLAMPED WITH CLAMP 10497-05-000 WITHIN 200MM OF OUTLET BOXES, USE SCREW G67-10-12B.
1. AT MINIMUM ALL WIRES TO BE SUPPORTED AND SECURED PER CODE REQUIREMENTS. USE CLAMP 10495 OR 10497 OR WIRE TIE 8343 OR 108046 AND SCREW G67-XX-XXX OR G56-XX-XXX AS APPROPRIATE FOR INSTALLATION.

NOTES:

5 4 3 LOAD CENTER ASM
000127262 / 324659-01-000

RCP-3 (ORG)
CONVERTER

RCP-2 (YEL)
AUDIO

RCP-1 (YEL)
TV

RCP-2 (YEL)
SOFA

RCP-E (BLU)
EXTERIOR

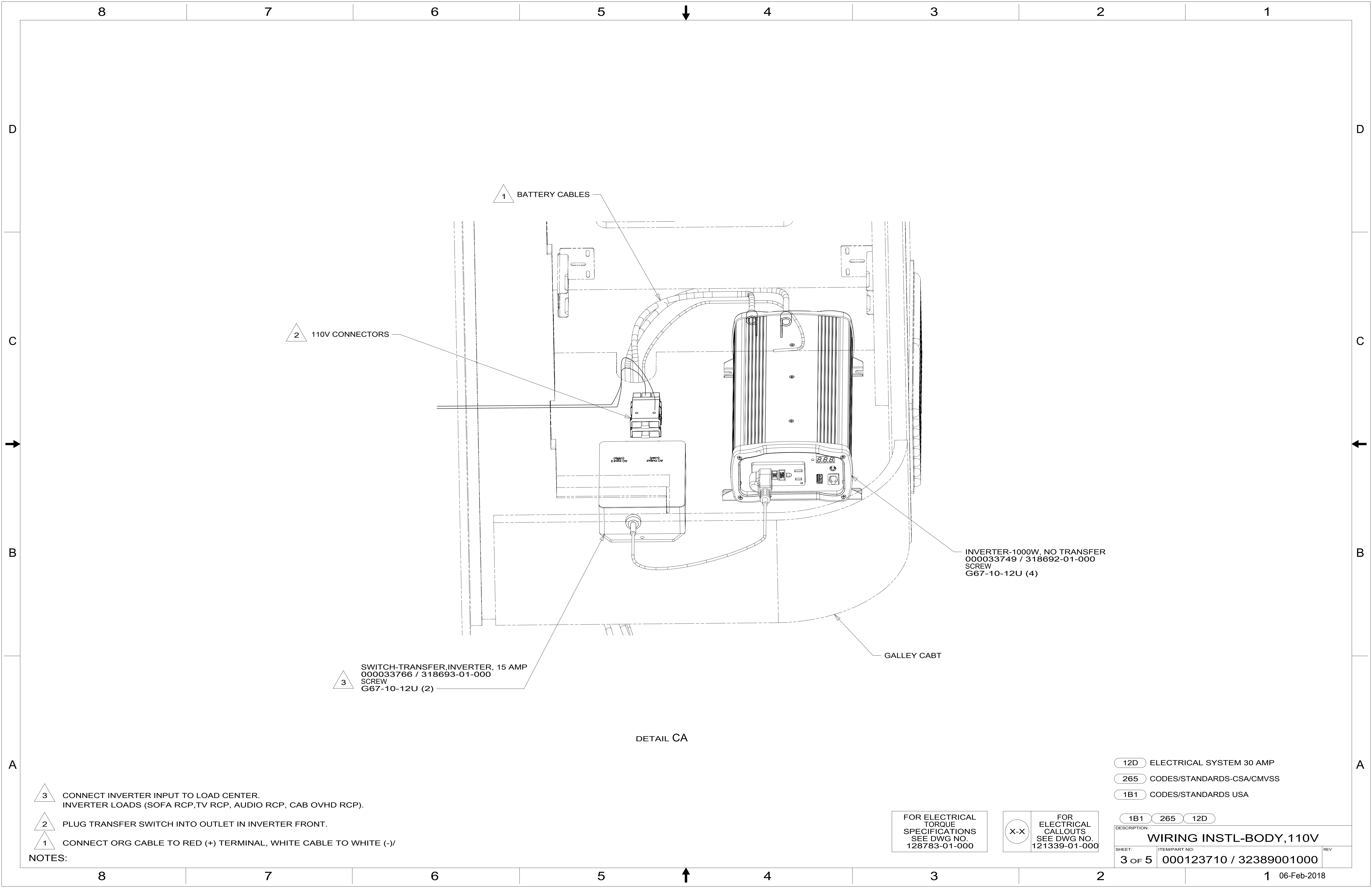
FOR ELECTRICAL
TORQUE
SPECIFICATIONS
SEE DWG NO.
128783-01-000

FOR
ELECTRICAL
CALLOUTS
SEE DWG NO.
121339-01-000

- 12D ELECTRICAL SYSTEM 30 AMP
- 265 CODES/STANDARDS-CSA/CMVSS
- 1B1 CODES/STANDARDS USA

DESCRIPTION: WIRING INSTL-BODY, 110V		
SHEET: 2 OF 5	ITEM/PART NO: 000123710 / 32389001000	REV

8 7 6 5 4 3 2 1 06-Feb-2018



1 BATTERY CABLES

2 110V CONNECTORS

3 SWITCH-TTRANSFER,INVERTER, 15 AMP
000033766 / 318693-01-000
SCREW
G67-10-12U (2)

INVERTER-1000W, NO TRANSFER
000033749 / 318692-01-000
SCREW
G67-10-12U (4)

GALLEY CABT

DETAIL CA

- NOTES:
- 3 CONNECT INVERTER INPUT TO LOAD CENTER.
INVERTER LOADS (SOFA RCP,TV RCP, AUDIO RCP, CAB OVHD RCP).
 - 2 PLUG TRANSFER SWITCH INTO OUTLET IN INVERTER FRONT.
 - 1 CONNECT ORG CABLE TO RED (+) TERMINAL, WHITE CABLE TO WHITE (-)

- 12D ELECTRICAL SYSTEM 30 AMP
- 265 CODES/STANDARDS-CSA/CMVSS
- 1B1 CODES/STANDARDS USA

FOR ELECTRICAL
TORQUE
SPECIFICATIONS
SEE DWG NO.
128783-01-000

FOR
ELECTRICAL
CALLOUTS
SEE DWG NO.
121339-01-000

DESCRIPTION: WIRING INSTL-BODY, 110V		
SHEET: 3 OF 5	ITEM/PART NO: 000123710 / 32389001000	REV

8

7

6

5

4

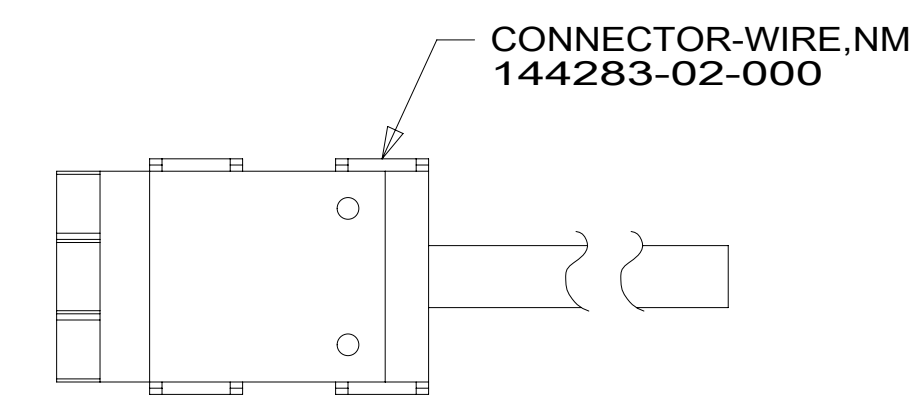
3

2

1



RED	1B1	136135-07-045	
	265	136136-07-045	
ORG	1B1	136131-16-015	
	265	136134-16-015	
BLK	1B1	136131-06-065	
	265	136134-06-065	
BLU	1B1	136131-02-170	
	265	136134-02-170	
WHT	1B1	136135-09-045	
	265	136136-09-045	
YEL	1B1	136131-05-075	6
	265	136134-05-075	6
MAIN	1B1	136137-01-060	
	265	136138-01-060	
GROUND MAIN		136145-05-075	4
MAIN EXTENSION	1B1	136137-01-025	
	265	136138-01-025	
CORD-POWER ASM		183140-01-000	5
GROUND ATS		136145-05-066	4
GENERATOR EXTENSION	1B1	136137-01-020	
	265	136138-01-020	
THROW IN WIRE #1	1B1	136131-05-110	6
	265	136134-05-110	6
THROW IN WIRE #2	1B1	136131-05-084	
	265	136134-05-084	



DETAIL DA

- 6 FOR CONNECTOR INSTALLATION, SEE DETAIL DA.
- 5 DO NOT HI-POT POWER CORD, LED INDICATOR LIGHT MAY FAIL.
- 4 GROUND WIRES TO BE INSTALLED ON MFG LINE. SHIP GROUND WIRES LOOSE WITH LOAD CENTER.
- 3. SEE WIRING INSTL-BODY,12V FOR ADDITIONAL INFORMATION.
- 2. SECURE WIRES TO BACKSIDE OF LOAD CENTER WITH WIRE TIE 116673-01-000.
- 1. ALL GROUNDS WIRES TO BE COVERED WITH TUBING 8041-02-000.

NOTES:

- 12D ELECTRICAL SYSTEM 30 AMP
- 265 CODES/STANDARDS-CSA/CMVSS
- 1B1 CODES/STANDARDS USA

FOR ELECTRICAL TORQUE SPECIFICATIONS SEE DWG NO. 128783-01-000

FOR ELECTRICAL CALLOUTS SEE DWG NO. 121339-01-000

1B1	265	12D
DESCRIPTION: WIRING INSTL-BODY,110V		
SHEET: 4 OF 5	ITEM/PART NO: 000123710 / 32389001000	REV

8

7

6

5

4

3

2

1

06-Feb-2018



D

D

C

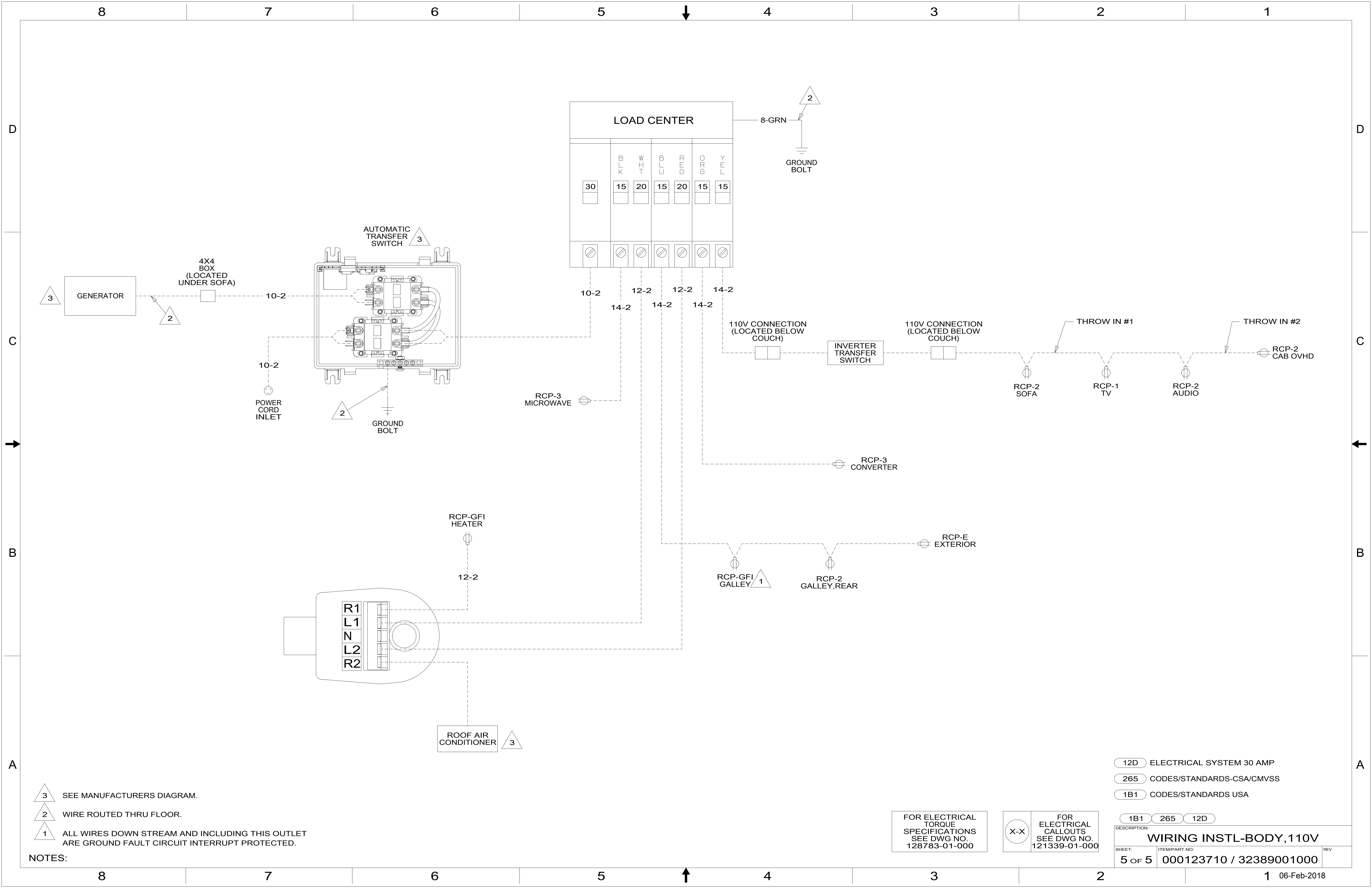
C

B

B

A

A



- NOTES:
- 3 SEE MANUFACTURERS DIAGRAM.
 - 2 WIRE ROUTED THRU FLOOR.
 - 1 ALL WIRES DOWN STREAM AND INCLUDING THIS OUTLET ARE GROUND FAULT CIRCUIT INTERRUPT PROTECTED.

FOR ELECTRICAL TORQUE SPECIFICATIONS SEE DWG NO. 128783-01-000

FOR ELECTRICAL CALLOUTS SEE DWG NO. 121339-01-000

- 12D ELECTRICAL SYSTEM 30 AMP
- 265 CODES/STANDARDS-CSA/CMVSS
- 1B1 CODES/STANDARDS USA

DESCRIPTION:		
WIRING INSTL-BODY, 110V		
SHEET:	ITEM/PART NO.:	REV:
5 OF 5	000123710 / 32389001000	