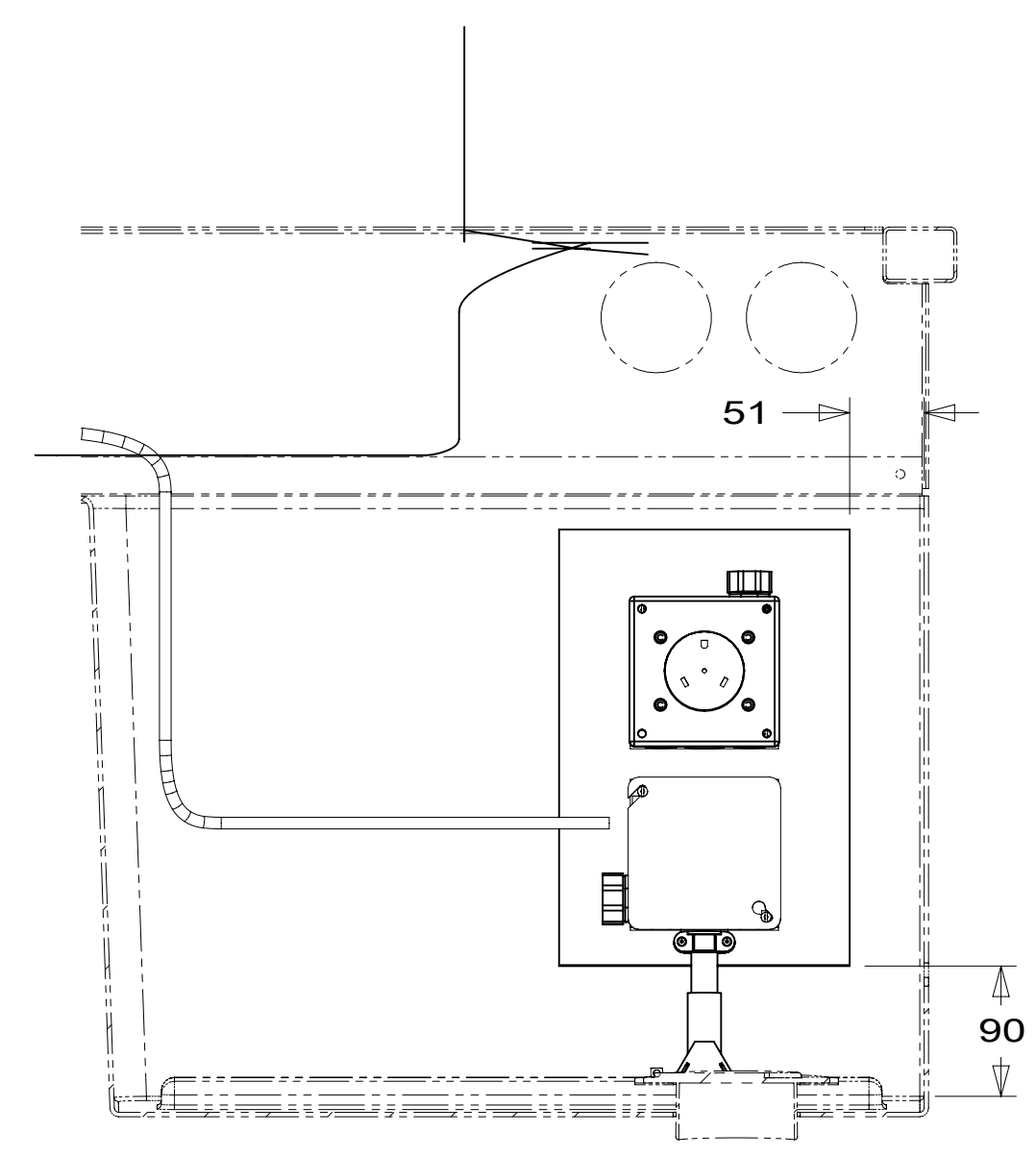


8 7 6 5 4 3 2 1



VIEW AA

110V CONNECTORS  
(MOUNTED TO UNDERSIDE  
OF FLOOR)  
DETAIL GD

POWER CORD BOX ASM  
000040479 / 319425-01-000

ROUTE MAIN WIRE  
IN BETWEEN TANK AND  
BRACKETS ON REAR  
SIDE OF TANKS

3200 DROP (10-GA)  
FROM LOAD CENTER  
TO POWER CORD BOX

BLK, THROW IN #3 (YEL-2), THROW IN #5 (BLU)  
TO LEFT SIDE. ROUTE WIRES FORWARD THROUGH  
COMPARTMENT THEN ACROSS COACH WITH THE  
WATER LINES UNDER THE DRAINAGE TANK. THEN  
RUN WIRES FORWARD TO FRONT OF COMPARTMENT  
AND TERMINATE AT MOUNTING PLATE.

3. AT MINIMUM ALL WIRES TO BE SUPPORTED AND SECURED  
PER CODE REQUIREMENTS. USE CLAMP 10495 OR 10497 OR 083610  
OR WIRE TIE 8343 OR 108046 AND SCREW G67-XX-XXX OR  
G56-XX-XXX AS APPROPRIATE FOR INSTALLATION.

2 WIRE ROUTES THROUGH FLOOR IN THIS AREA.

1. WIRES ROUTED UNDER FLOOR.

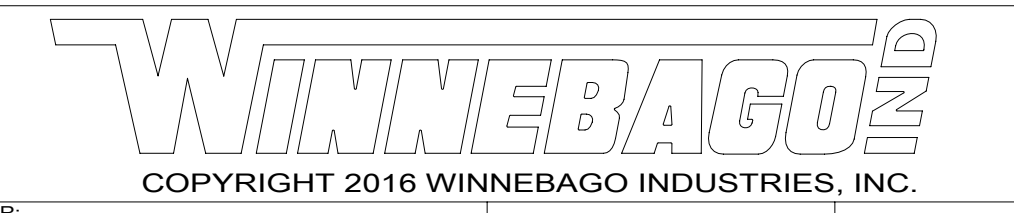
NOTES:

FOR ELECTRICAL  
TORQUE  
SPECIFICATIONS  
SEE DWG NO.  
128783-01-000

FOR ELECTRICAL  
CALLOUTS  
SEE DWG NO.  
121339-01-000

265 CODES/STANDARDS-CSA/CMVSS  
1B1 CODES/STANDARDS USA

1B1 265



DSNR:	ALL DIMENSIONS ARE IN MILLIMETERS	
DFFR:		
UNSPECIFIED TOLERANCES:	MATERIAL:	
WHOLE DIM (X) :	3	
ONE-PLACE (X.X) :	1.5	
TWO-PLACE (X.XX) :	0.50	
ANGLE :	1°	
REFER TO ES0018 FOR FASTENER TIGHTENING GUIDELINES	WEIGHT: (LBS)	FIRST USED: <b>18 V29L</b>

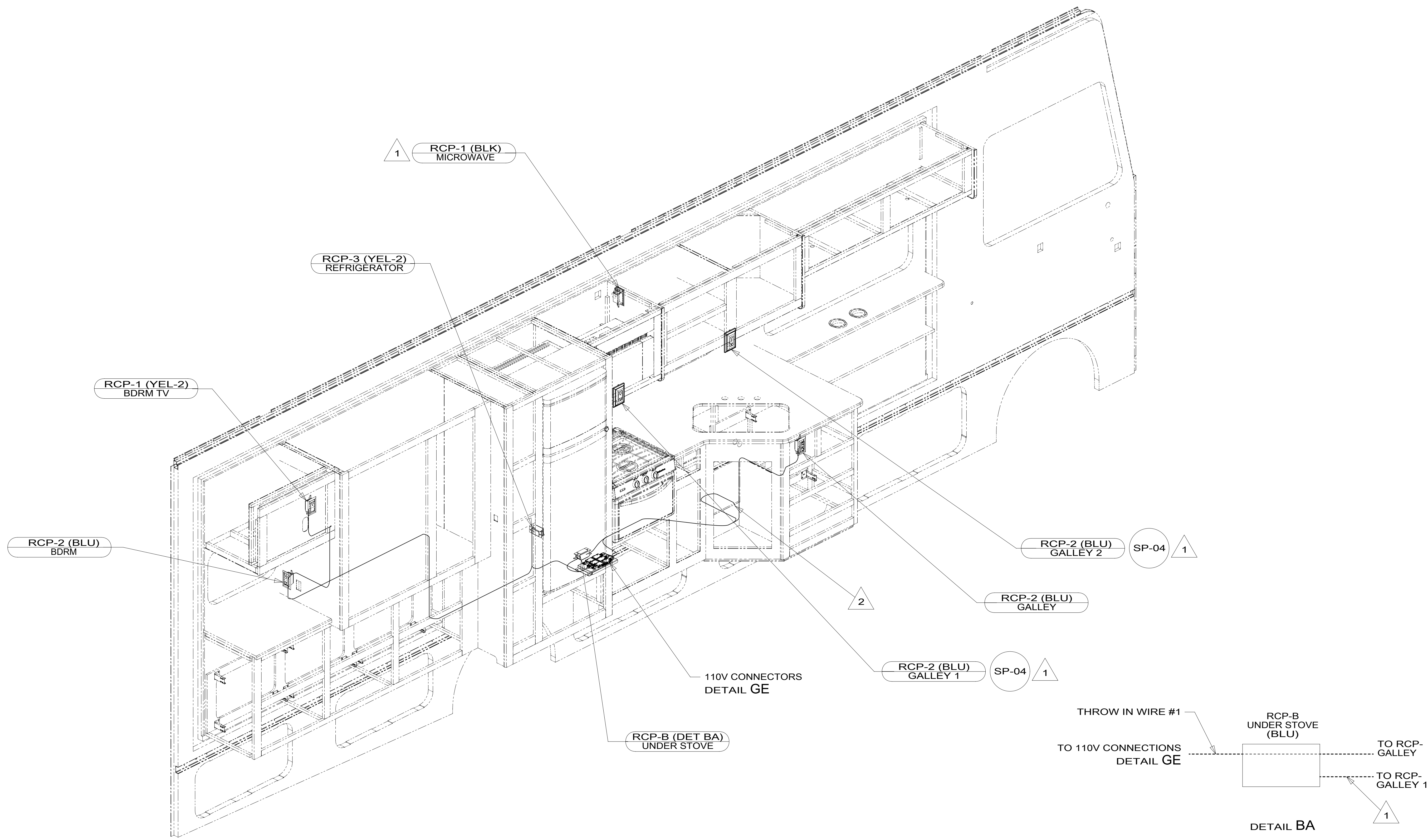
**WIRING INSTL-BODY, 110V**

SHEET:	ITEM/PART NO.:	REV:
<b>1 OF 8</b>	<b>000122522 / 32333101000</b>	

8 7 6 5 4 3 2 1

8 7 6 5 4 3 2 1

D  
C  
B  
A



3. AT MINIMUM ALL WIRES TO BE SUPPORTED AND SECURED PER CODE REQUIREMENTS. USE CLAMP 10495 OR 10497 OR 083610 OR WIRE TIE 8343 OR 108046 AND SCREW G67-XX-XXX OR G56-XX-XXX AS APPROPRIATE FOR INSTALLATION.

- 2 WIRE ROUTED THRU FLOOR IN THIS AREA.
- 1 WIRE ROUTED IN SIDEWALL.

NOTES:

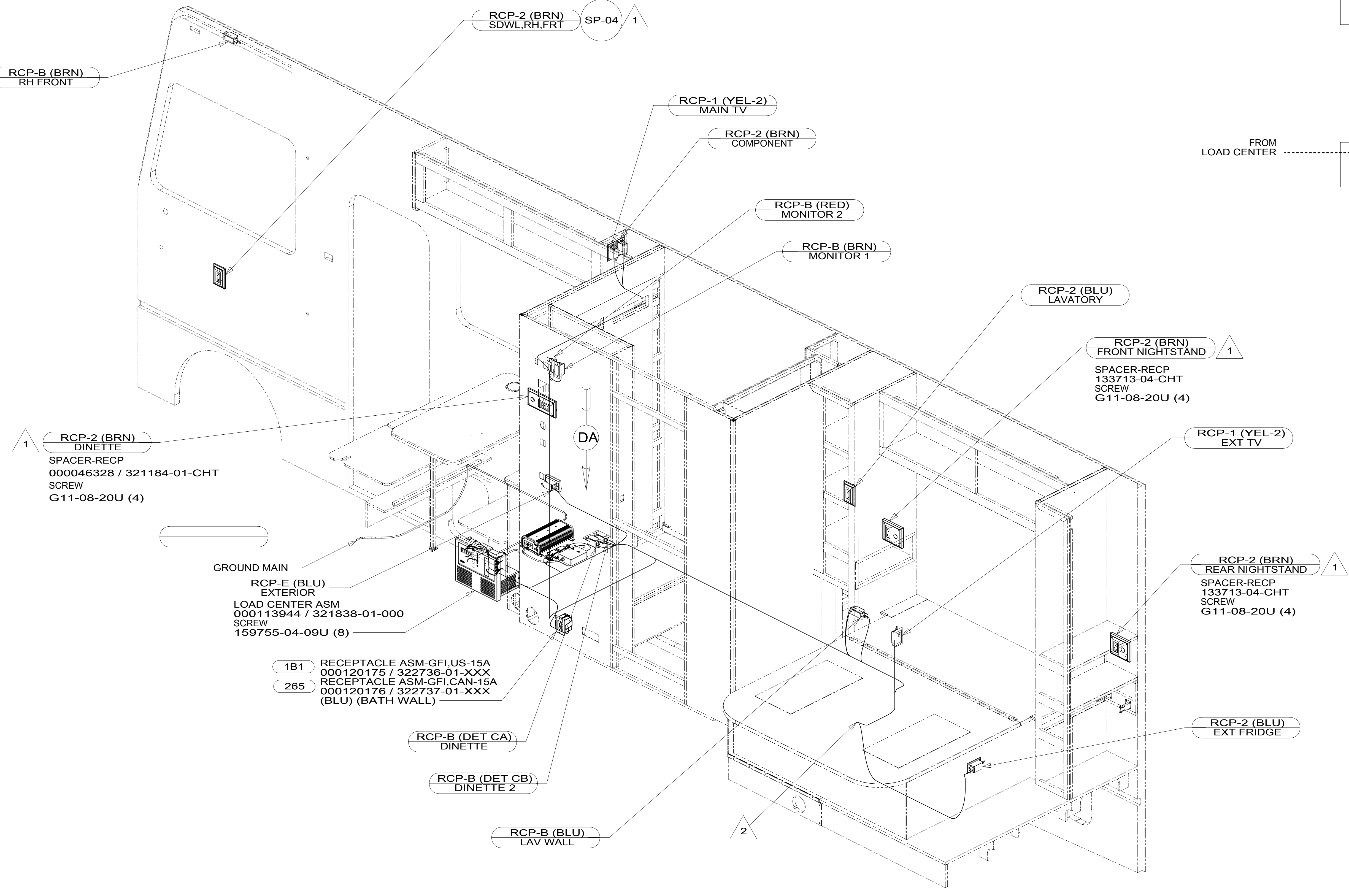
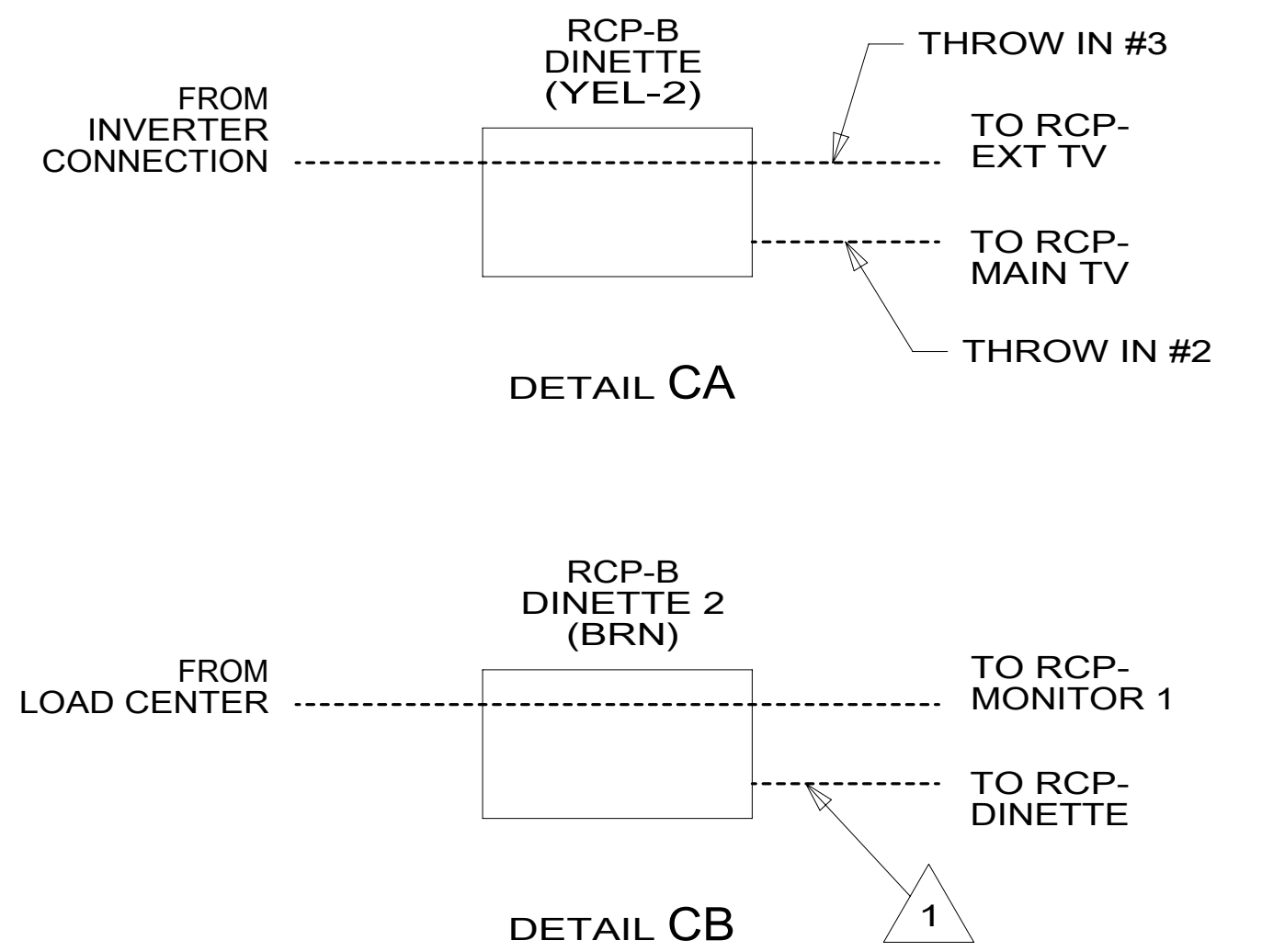
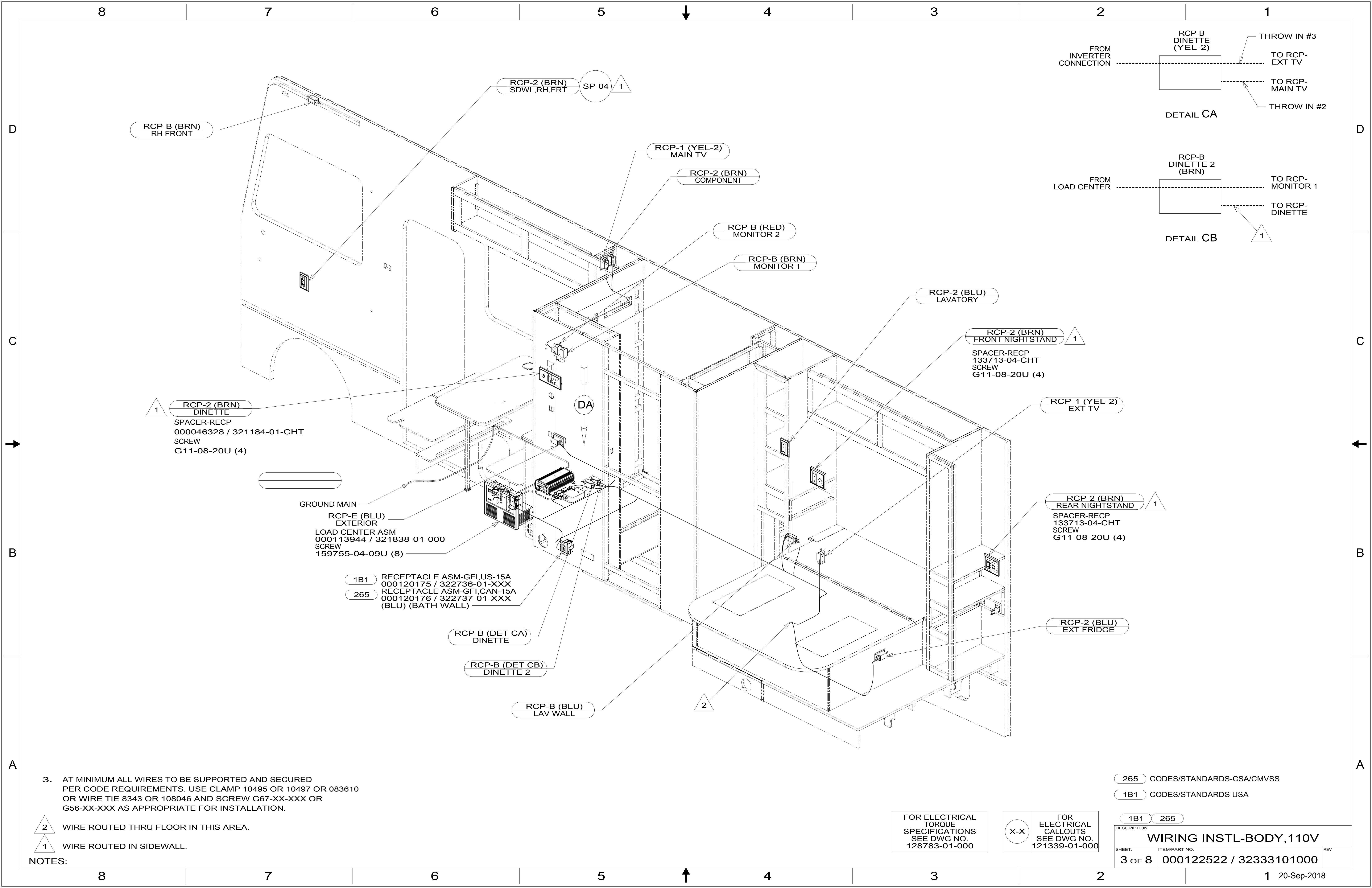
265 CODES/STANDARDS-CSA/CMVSS  
 1B1 CODES/STANDARDS USA

FOR ELECTRICAL TORQUE SPECIFICATIONS SEE DWG NO. 128783-01-000

FOR ELECTRICAL CALLOUTS SEE DWG NO. 121339-01-000

DESCRIPTION: <b>WIRING INSTL-BODY, 110V</b>	
SHEET: 2 OF 8	ITEM/PART NO.: 000122522 / 32333101000
REV 1 20-Sep-2018	

8 7 6 5 4 3 2 1



1 RCP-2 (BRN) DINETTE  
 SPACER-RECP  
 000046328 / 321184-01-CHT  
 SCREW  
 G11-08-20U (4)

GROUND MAIN  
 RCP-E (BLU) EXTERIOR  
 LOAD CENTER ASM  
 000113944 / 321838-01-000  
 SCREW  
 159755-04-09U (8)

1B1 RECEPTACLE ASM-GFI,US-15A  
 000120175 / 322736-01-XXX  
 265 RECEPTACLE ASM-GFI,CAN-15A  
 000120176 / 322737-01-XXX  
 (BLU) (BATH WALL)

1 RCP-2 (BRN) FRONT NIGHTSTAND  
 SPACER-RECP  
 133713-04-CHT  
 SCREW  
 G11-08-20U (4)

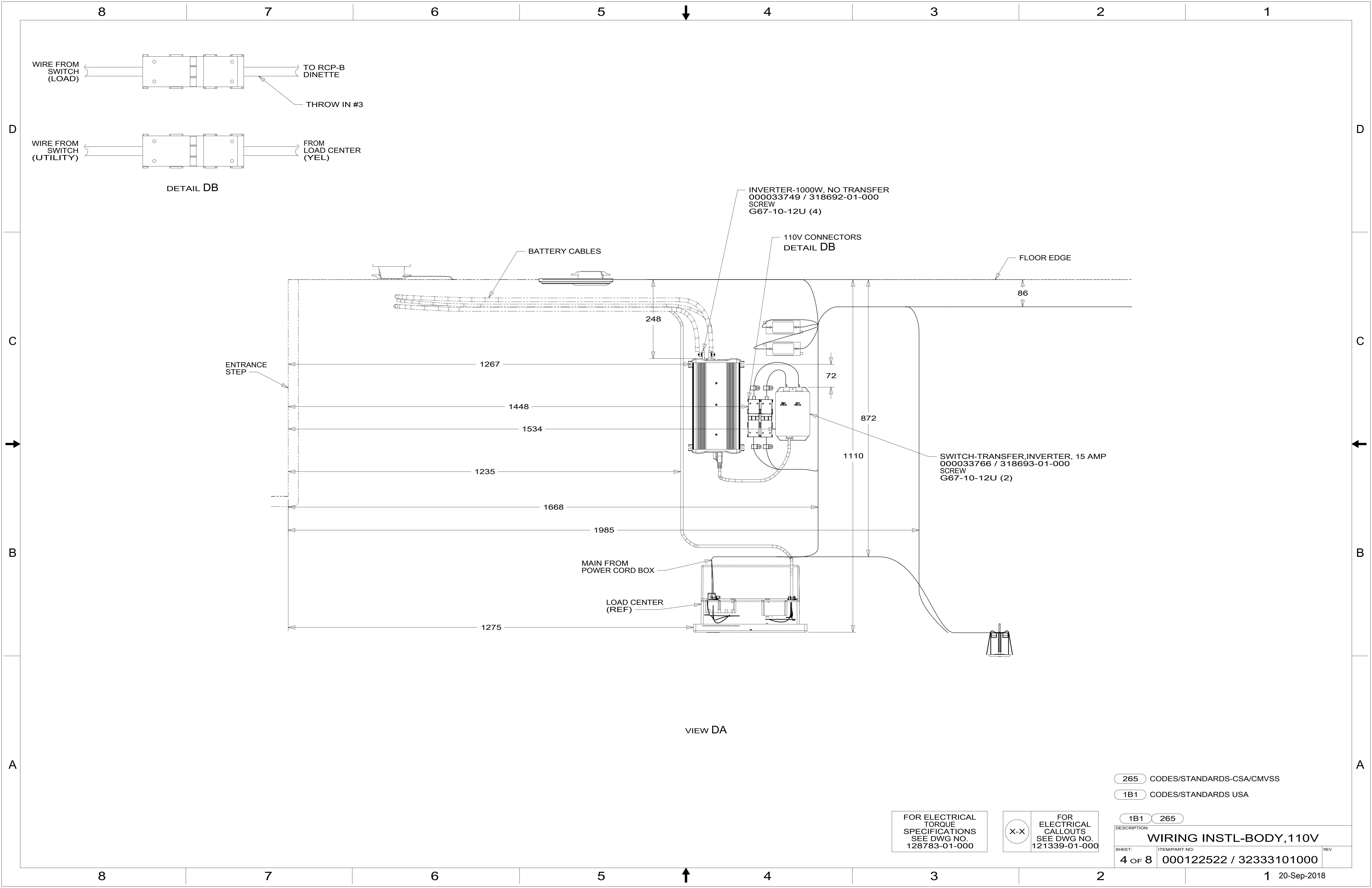
1 RCP-2 (BRN) REAR NIGHTSTAND  
 SPACER-RECP  
 133713-04-CHT  
 SCREW  
 G11-08-20U (4)

3. AT MINIMUM ALL WIRES TO BE SUPPORTED AND SECURED PER CODE REQUIREMENTS. USE CLAMP 10495 OR 10497 OR 083610 OR WIRE TIE 8343 OR 108046 AND SCREW G67-XX-XXX OR G56-XX-XXX AS APPROPRIATE FOR INSTALLATION.

2 WIRE ROUTED THRU FLOOR IN THIS AREA.  
 1 WIRE ROUTED IN SIDEWALL.

FOR ELECTRICAL TORQUE SPECIFICATIONS SEE DWG NO. 128783-01-000  
 X-X FOR ELECTRICAL CALLOUTS SEE DWG NO. 121339-01-000

265	CODES/STANDARDS-CSA/CMVSS
1B1	CODES/STANDARDS USA
1B1	265
DESCRIPTION: <b>WIRING INSTL-BODY,110V</b>	
SHEET: 3 OF 8	ITEM/PART NO: 000122522 / 32333101000
REV	
1 20-Sep-2018	

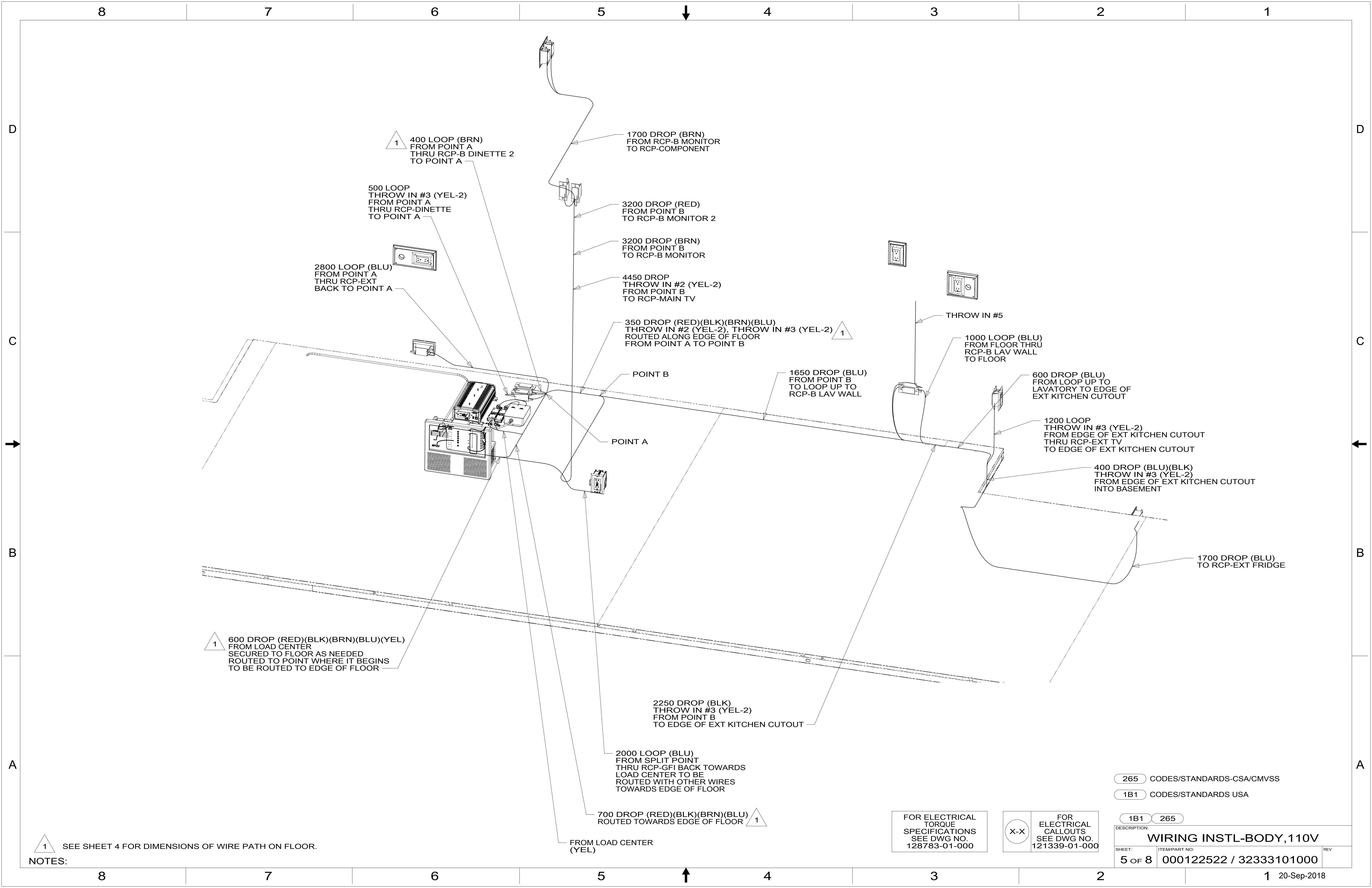


265 CODES/STANDARDS-CSA/CMVSS  
1B1 CODES/STANDARDS USA

FOR ELECTRICAL TORQUE SPECIFICATIONS SEE DWG NO. 128783-01-000

FOR ELECTRICAL CALLOUTS SEE DWG NO. 121339-01-000

DESCRIPTION:	
1B1 265	
WIRING INSTL-BODY, 110V	
SHEET:	ITEM/PART NO:
4 OF 8	000122522 / 32333101000
REV	



1 SEE SHEET 4 FOR DIMENSIONS OF WIRE PATH ON FLOOR.

NOTES:

FOR ELECTRICAL TORQUE SPECIFICATIONS SEE DWG NO. 128783-01-000

FOR ELECTRICAL CALLOUTS SEE DWG NO. 121339-01-000

- 265 CODES/STANDARDS-CSA/CMVSS
- 1B1 CODES/STANDARDS USA

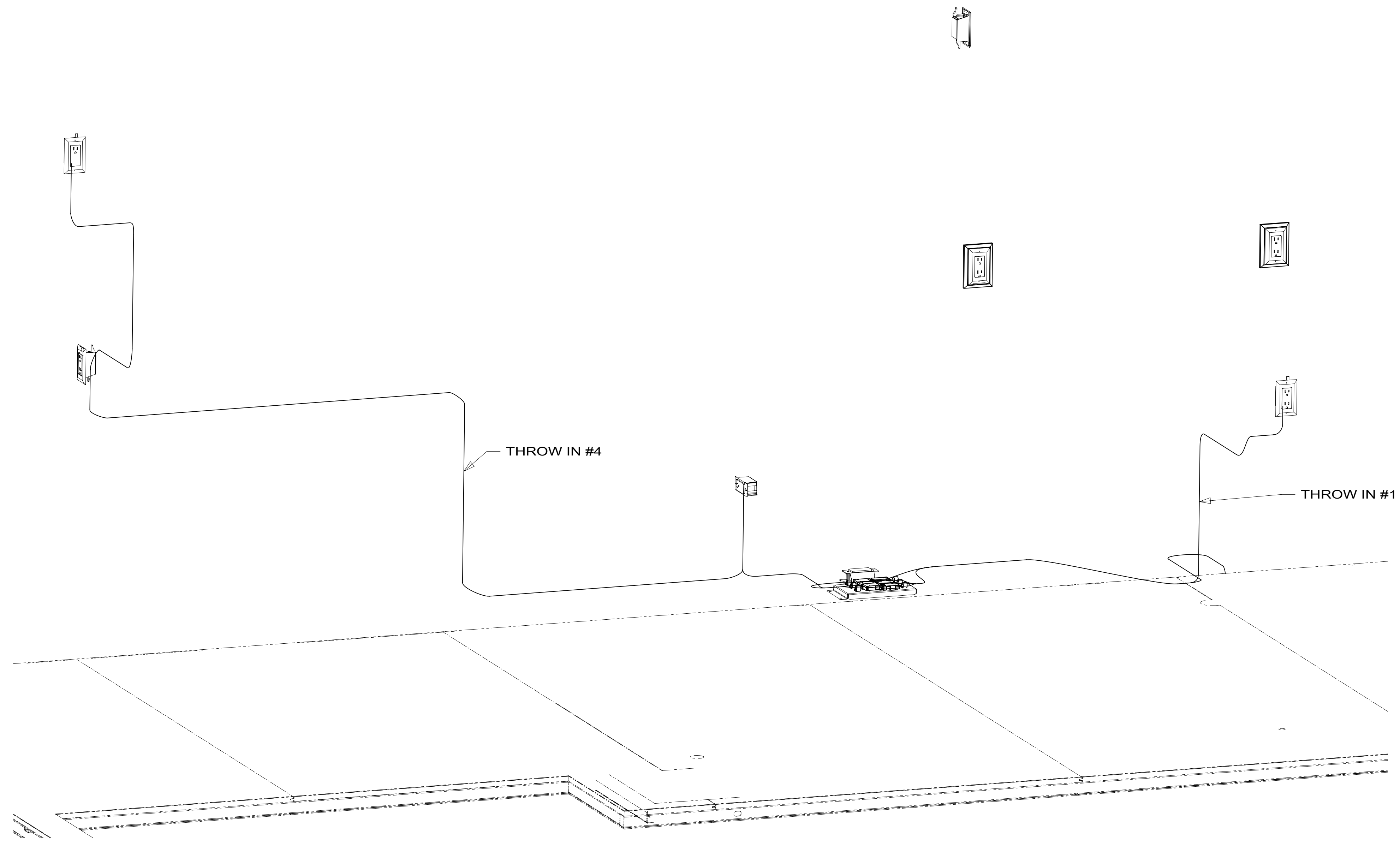
DESCRIPTION:	
<b>WIRING INSTL-BODY, 110V</b>	
SHEET:	ITEM/PART NO.:
5 OF 8	000122522 / 32333101000
REV	

8 7 6 5 4 3 2 1



D  
C  
B  
A

D  
C  
B  
A



8 7 6 5 4 3 2 1



FOR ELECTRICAL  
TORQUE  
SPECIFICATIONS  
SEE DWG NO.  
128783-01-000

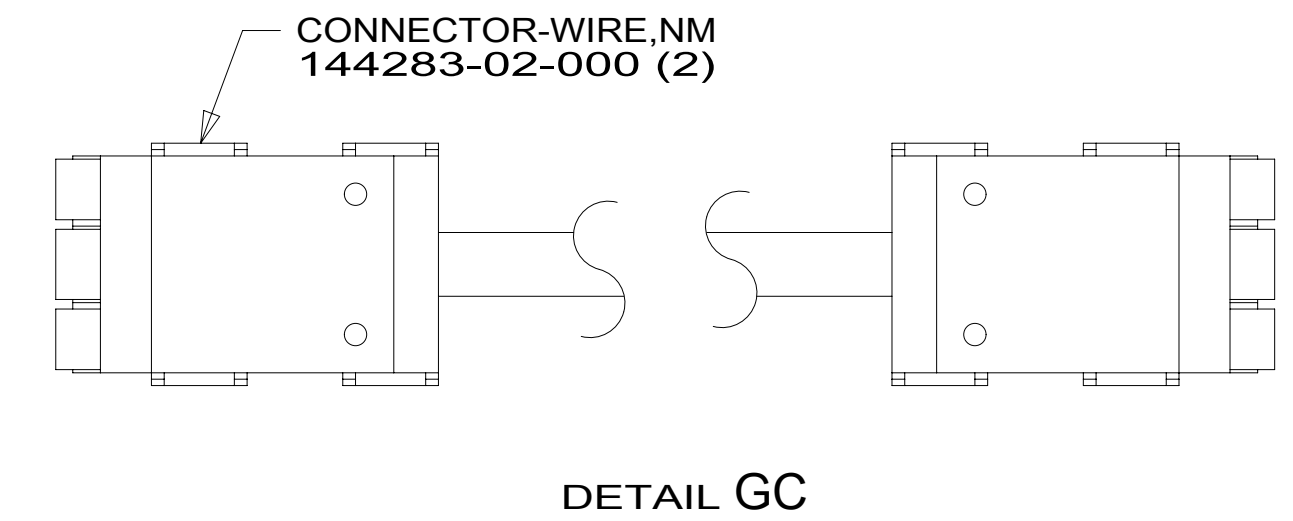
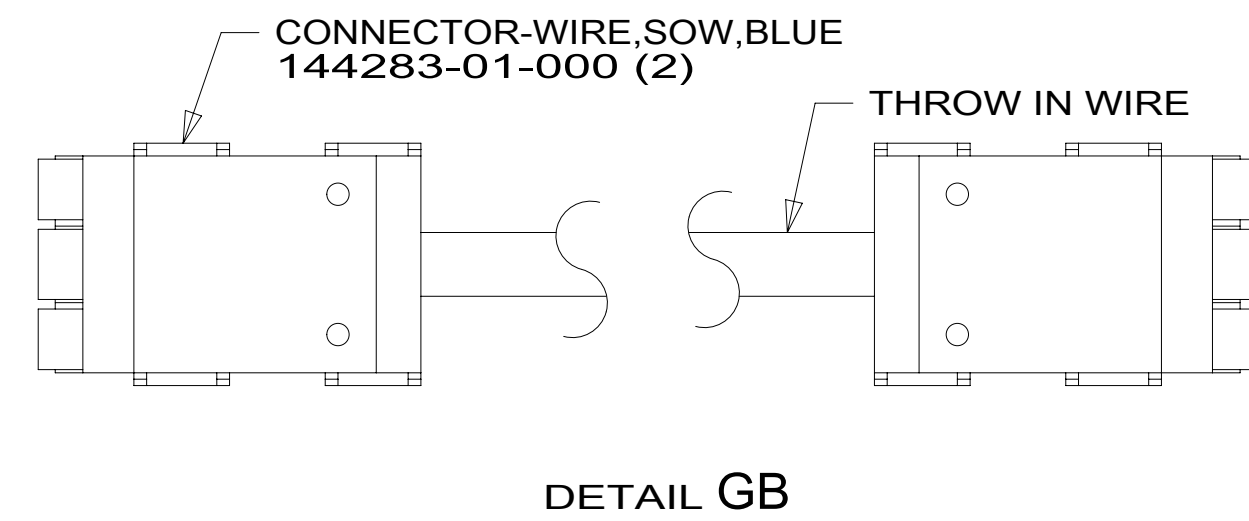
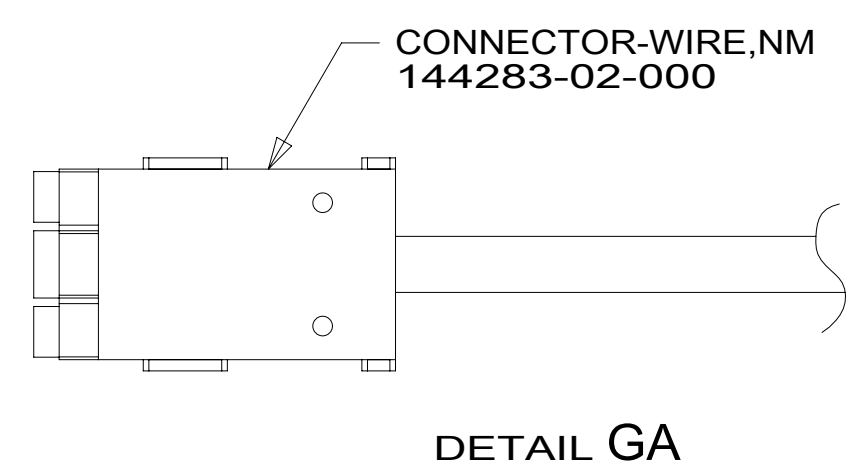
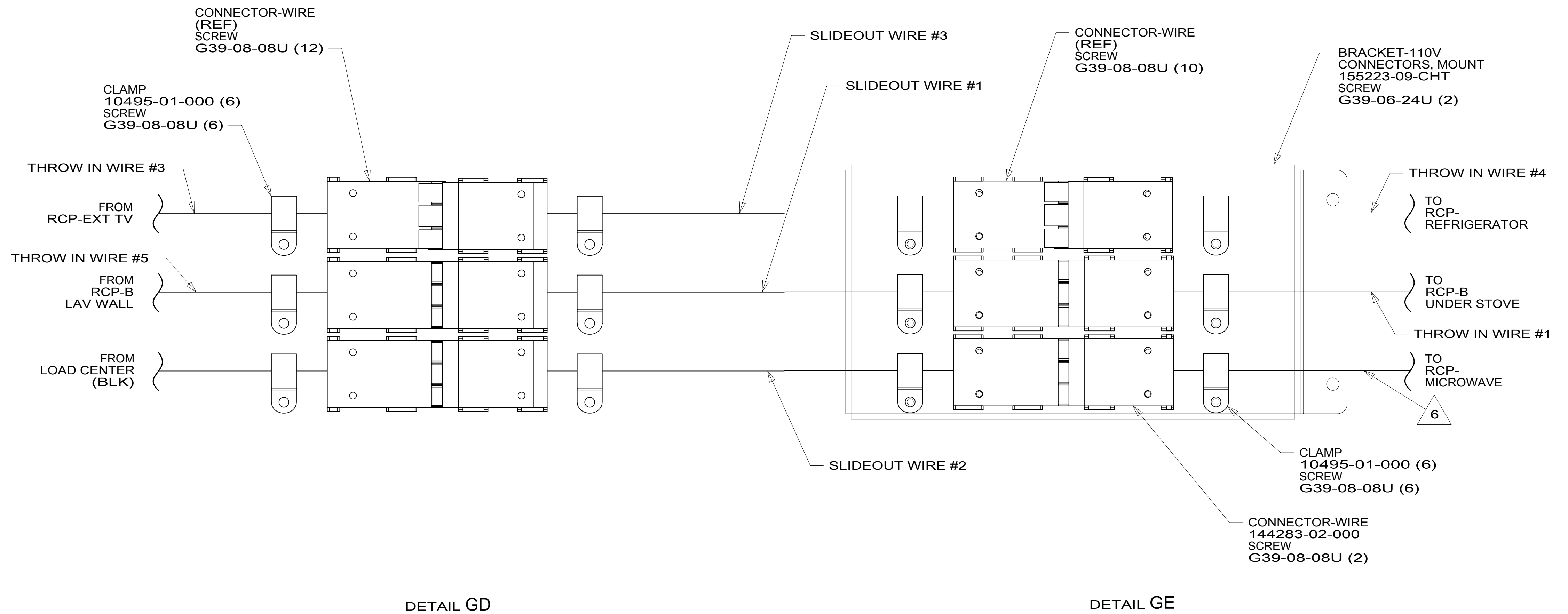
FOR  
ELECTRICAL  
CALLOUTS  
SEE DWG NO.  
121339-01-000

- 265 CODES/STANDARDS-CSA/CMVSS
- 1B1 CODES/STANDARDS USA

DESCRIPTION: <b>WIRING INSTL-BODY, 110V</b>	
SHEET: <b>6 OF 8</b>	ITEM/PART NO.: <b>000122522 / 32333101000</b>
REV	1 20-Sep-2018



RED	1B1	136135-07-051	
	265	136136-07-051	
YEL	1B1	136131-05-014	3
	265	136134-05-014	3
BRN	1B1	136131-03-077	
	265	136134-03-077	
BLU	1B1	136131-02-127	
	265	136134-02-127	
MAIN	1B1	136137-01-073	7
	265	136138-01-073	7
BLK	1B1	136131-06-091	3
	265	136134-06-091	3
THROW IN WIRE #1	1B1	136131-02-092	3
	265	136134-02-092	3
THROW IN WIRE #2	1B1	136131-13-050	
	265	136134-13-050	
THROW IN WIRE #3	1B1	136131-13-103	5
	265	136134-13-103	5
THROW IN WIRE #4	1B1	136131-13-060	3
	265	136134-13-060	3
THROW IN WIRE #5	1B1	136131-02-073	3
	265	136134-02-073	3
GROUND MAIN		178545-01-037	
SLIDEOUT #1		136151-02-030	4
SLIDEOUT #2		136151-06-030	4
SLIDEOUT #3		136151-13-030	4



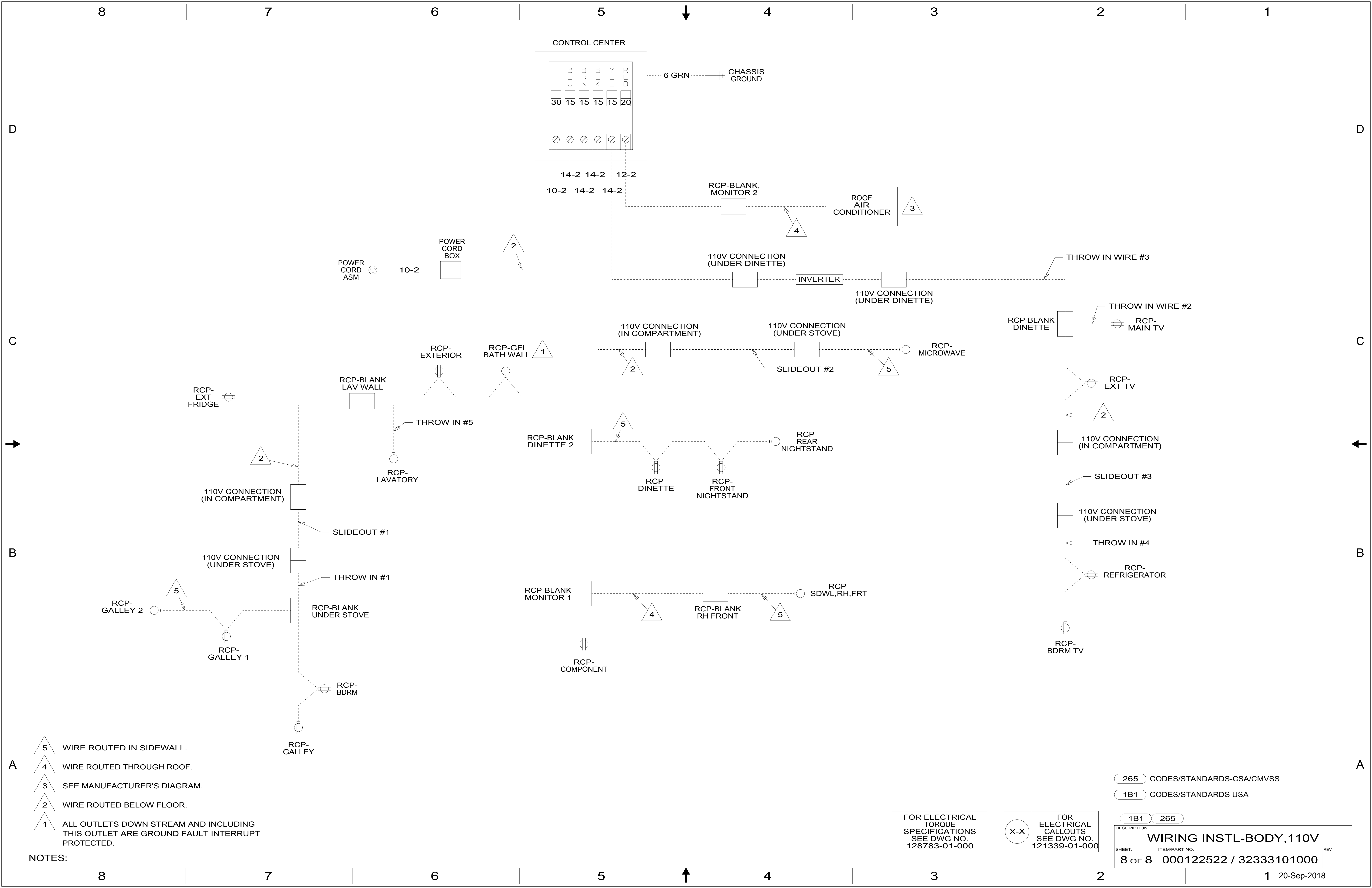
- 7 ATTACH ONE END OF MAIN TO LOAD CENTER. COVER OTHER END OF MAIN CABLE ASM WITH 1000 MM OF CONDUIT 091234-02-000. SECURE WITH TAPE 8363-01-000.
- 6 WIRE ROUTED IN SIDEWALL.
- 5 SEE DETAIL GC FOR CONNECTOR INSTALLATION.
- 4 SEE DETAIL GB FOR CONNECTOR INSTALLATION.
- 3 SEE DETAIL GA FOR CONNECTOR INSTALLATION.
2. SECURE WIRES TO BACKSIDE OF LOAD CENTER WITH WIRE TIE 116673-01-000.
1. ALL GROUNDS WIRES TO BE COVERED WITH TUBING 8041-02-000.
- NOTES:

265 CODES/STANDARDS-CSA/CMVSS  
1B1 CODES/STANDARDS USA

FOR ELECTRICAL TORQUE SPECIFICATIONS SEE DWG NO. 128783-01-000

FOR ELECTRICAL CALLOUTS SEE DWG NO. 121339-01-000

1B1	265
DESCRIPTION:	
WIRING INSTL-BODY, 110V	
SHEET:	ITEM/PART NO.:
7 OF 8	000122522 / 32333101000
REV	



- NOTES:
- 5 WIRE ROUTED IN SIDEWALL.
  - 4 WIRE ROUTED THROUGH ROOF.
  - 3 SEE MANUFACTURER'S DIAGRAM.
  - 2 WIRE ROUTED BELOW FLOOR.
  - 1 ALL OUTLETS DOWN STREAM AND INCLUDING THIS OUTLET ARE GROUND FAULT INTERRUPT PROTECTED.

FOR ELECTRICAL TORQUE SPECIFICATIONS SEE DWG NO. 128783-01-000

FOR ELECTRICAL CALLOUTS SEE DWG NO. 121339-01-000

265 CODES/STANDARDS-CSA/CMVSS  
 1B1 CODES/STANDARDS USA

DESCRIPTION:	
<b>WIRING INSTL-BODY, 110V</b>	
SHEET:	ITEM/PART NO.:
8 OF 8	000122522 / 32333101000
REV	
	1 20-Sep-2018