

- 6 WIRES MARKED WITH RED TAPE.
- 5 WIRES MARKED WITH ORG TAPE.
- 4 WIRES MARKED WITH BLU TAPE.
- 3 SEE DETAIL EA FOR CONNECTION TO SENSOR PROBES.
- 2 WIRE PASSES THROUGH FLOOR IN THIS AREA.

1. AT MINIMUM ALL WIRES TO BE SUPPORTED AND SECURED PER CODE REQUIREMENTS. USE CLAMP 10495 OR 10497 OR 083610 OR WIRE TIE 8343 OR 108046 AND SCREW G67-XX-XXX OR G56-XX-XXX AS APPROPRIATE FOR INSTALLATION.

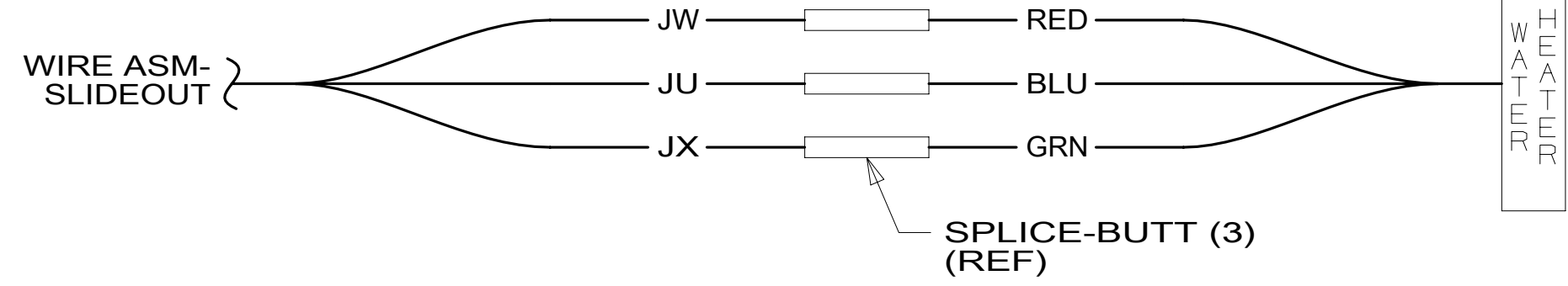
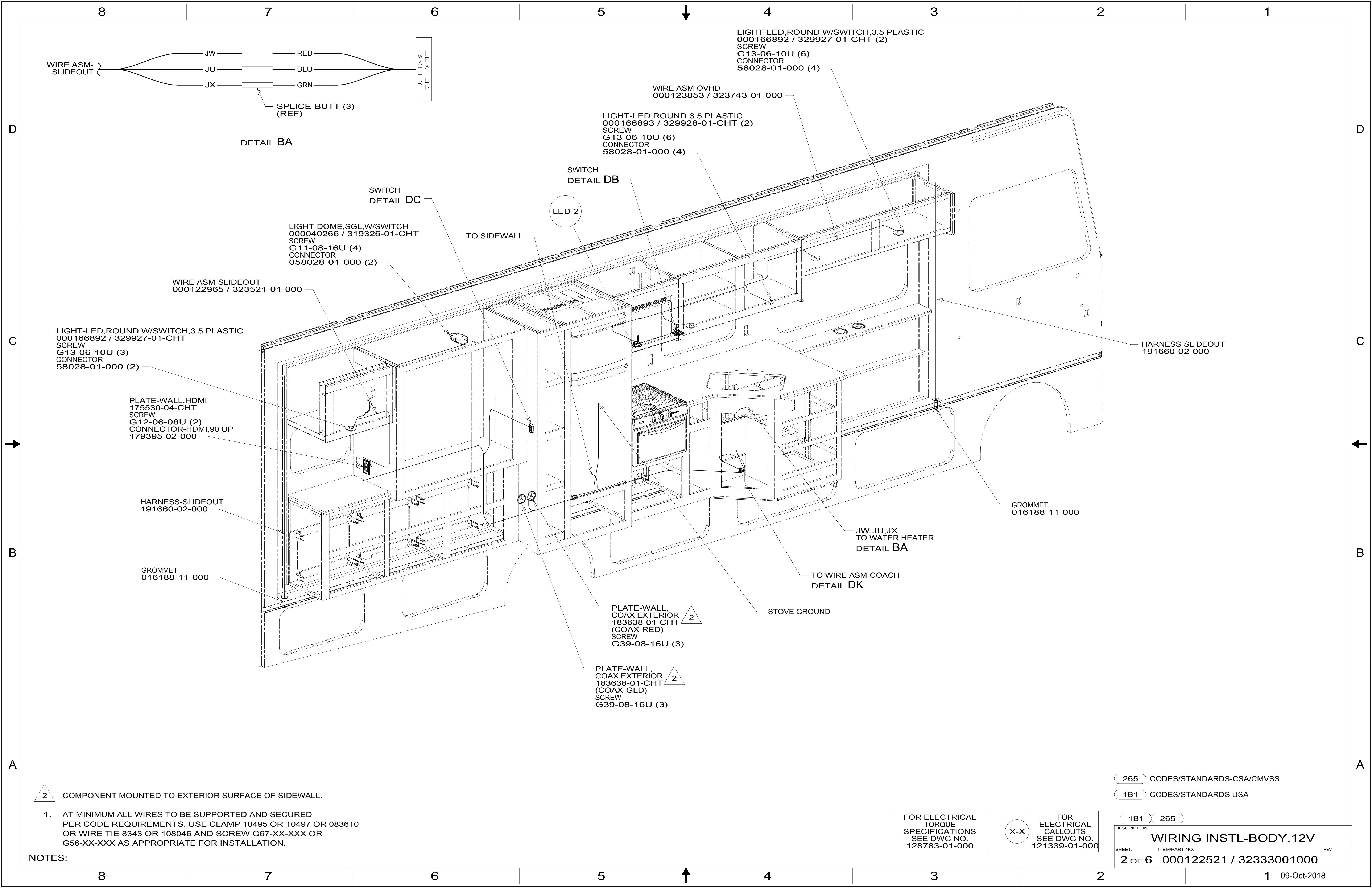
NOTES:

FOR ELECTRICAL TORQUE SPECIFICATIONS SEE DWG NO. 128783-01-000

FOR ELECTRICAL CALLOUTS SEE DWG NO. 121339-01-000

- 265 CODES/STANDARDS-CSA/CMVSS
- 1B1 CODES/STANDARDS USA
- 1B1 265

WINNEBAGO COPYRIGHT 2016 WINNEBAGO INDUSTRIES, INC.	
DSNR:	ALL DIMENSIONS ARE IN MILLIMETERS
DIFTR:	MATERIAL:
UNSPECIFIED TOLERANCES:	WEIGHT: (LBS)
WHOLE DIM (X) : 3	FIRST USED:
ONE-PLACE (X.X) : 1.5	18 V29L
TWO-PLACE (X.XX) : 0.50	
ANGLE : 1°	
REFER TO ES0018 FOR FASTENER TIGHTENING GUIDELINES	
DESCRIPTION: WIRING INSTL-BODY, 12V	
SHEET: 1 OF 6	ITEM/PART NO: 000122521 / 32333001000
REF:	1 09-Oct-2018



DETAIL BA

SWITCH
DETAIL DC

LED-2
DETAIL DB

LIGHT-DOME,SGL,W/SWITCH
000040266 / 319326-01-CHT
SCREW
G11-08-16U (4)
CONNECTOR
058028-01-000 (2)

WIRE ASM-SLIDEOUT
000122965 / 323521-01-000

LIGHT-LED,ROUND W/SWITCH,3.5 PLASTIC
000166892 / 329927-01-CHT
SCREW
G13-06-10U (3)
CONNECTOR
58028-01-000 (2)

PLATE-WALL,HDMI
175530-04-CHT
SCREW
G12-06-08U (2)
CONNECTOR-HDMI,90 UP
179395-02-000

HARNESS-SLIDEOUT
191660-02-000

GROMMET
016188-11-000

WIRE ASM-OVHD
000123853 / 323743-01-000

LIGHT-LED,ROUND 3.5 PLASTIC
000166893 / 329928-01-CHT (2)
SCREW
G13-06-10U (6)
CONNECTOR
58028-01-000 (4)

LIGHT-LED,ROUND W/SWITCH,3.5 PLASTIC
000166892 / 329927-01-CHT (2)
SCREW
G13-06-10U (6)
CONNECTOR
58028-01-000 (4)

HARNESS-SLIDEOUT
191660-02-000

GROMMET
016188-11-000

JW,JU,JX
TO WATER HEATER
DETAIL BA

TO WIRE ASM-COACH
DETAIL DK

STOVE GROUND

PLATE-WALL,
COAX EXTERIOR
183638-01-CHT (2)
(COAX-RED)
SCREW
G39-08-16U (3)

PLATE-WALL,
COAX EXTERIOR
183638-01-CHT (2)
(COAX-GLD)
SCREW
G39-08-16U (3)

2 COMPONENT MOUNTED TO EXTERIOR SURFACE OF SIDEWALL.

1. AT MINIMUM ALL WIRES TO BE SUPPORTED AND SECURED PER CODE REQUIREMENTS. USE CLAMP 10495 OR 10497 OR 083610 OR WIRE TIE 8343 OR 108046 AND SCREW G67-XX-XXX OR G56-XX-XXX AS APPROPRIATE FOR INSTALLATION.

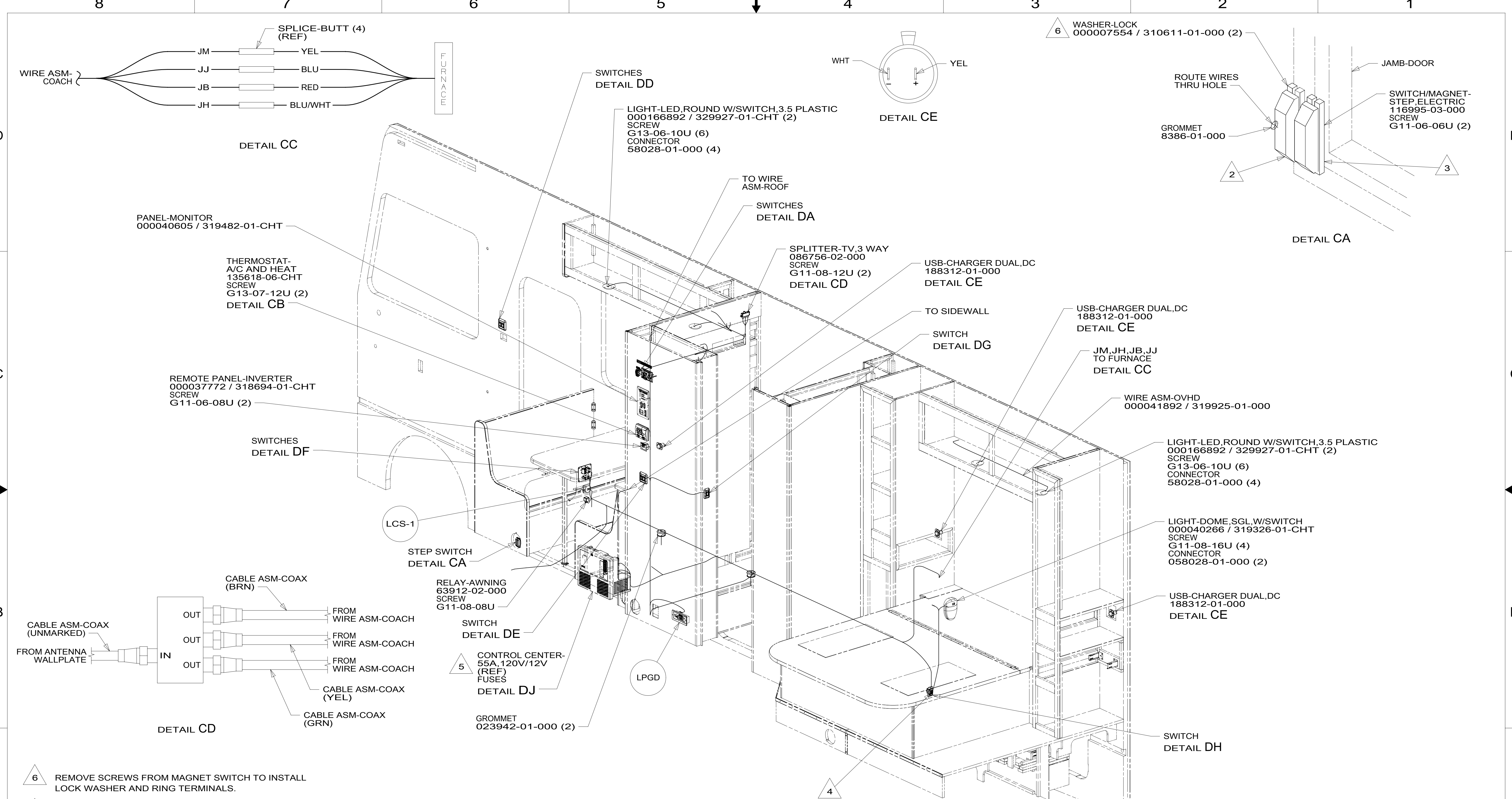
NOTES:

265 CODES/STANDARDS-CSA/CMVSS
1B1 CODES/STANDARDS USA

FOR ELECTRICAL TORQUE SPECIFICATIONS SEE DWG NO. 128783-01-000

FOR ELECTRICAL CALLOUTS SEE DWG NO. 121339-01-000

DESCRIPTION: WIRING INSTL-BODY, 12V		
SHEET: 2 OF 6	ITEM/PART NO: 000122521 / 32333001000	REV
		09-Oct-2018

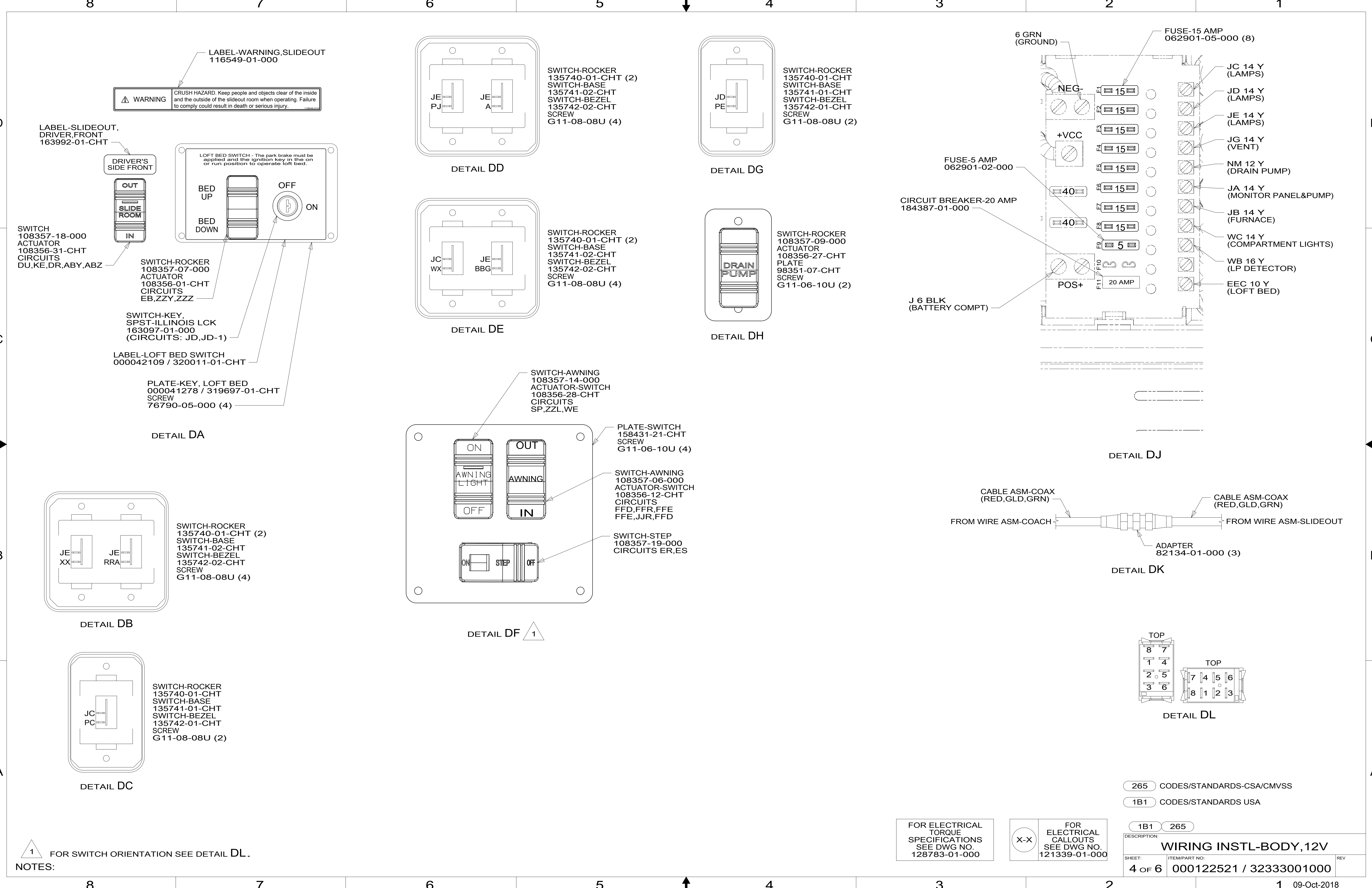


- 6 REMOVE SCREWS FROM MAGNET SWITCH TO INSTALL LOCK WASHER AND RING TERMINALS.
- 5 SEE LOAD CENTER ASM FOR ADDITIONAL INFORMATION.
- 4 WIRE PASSES THROUGH FLOOR IN THIS AREA.
- 3 MOUNT MAGNET TO SCREEN DOOR FRAME, MOUNT WITH MAGNET TOWARD SWITCH.
- 2 MOUNT SWITCH TO DOOR JAMB WITH TAPE 076322-21-000.
1. AT MINIMUM ALL WIRES TO BE SUPPORTED AND SECURED PER CODE REQUIREMENTS. USE CLAMP 10495 OR 10497 OR 083610 OR WIRE TIE 8343 OR 108046 AND SCREW G67-XX-XXX OR G56-XX-XXX AS APPROPRIATE FOR INSTALLATION.

FOR ELECTRICAL TORQUE SPECIFICATIONS SEE DWG NO. 128783-01-000

FOR ELECTRICAL CALLOUTS SEE DWG NO. 121339-01-000

265	CODES/STANDARDS-CSA/CMVSS
1B1	CODES/STANDARDS USA
1B1	265
DESCRIPTION: WIRING INSTL-BODY, 12V	
SHEET: 3 OF 6	ITEM/PART NO: 000122521 / 32333001000
REV 09-Oct-2018	



8 7 6 5 4 3 2 1

D

C

B

A

D

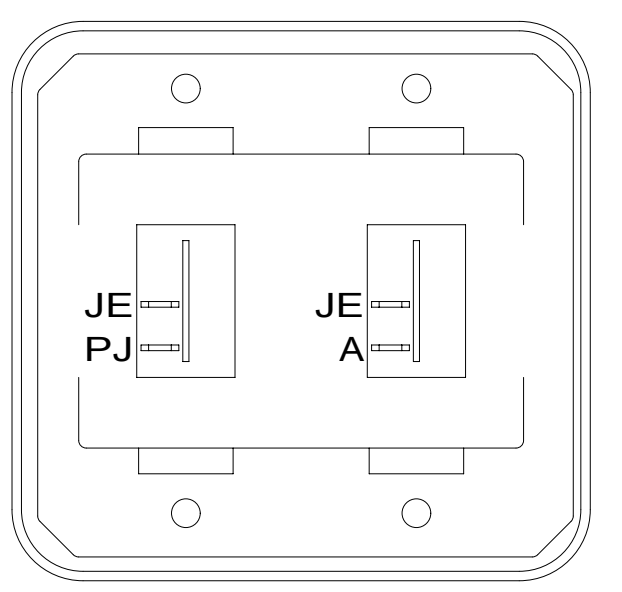
C

B

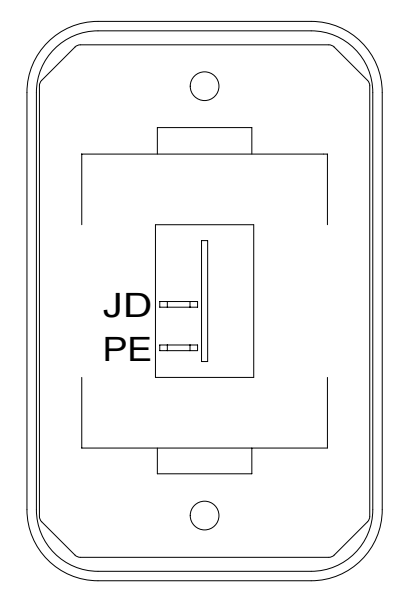
A

LABEL-WARNING,SLIDEOUT
116549-01-000

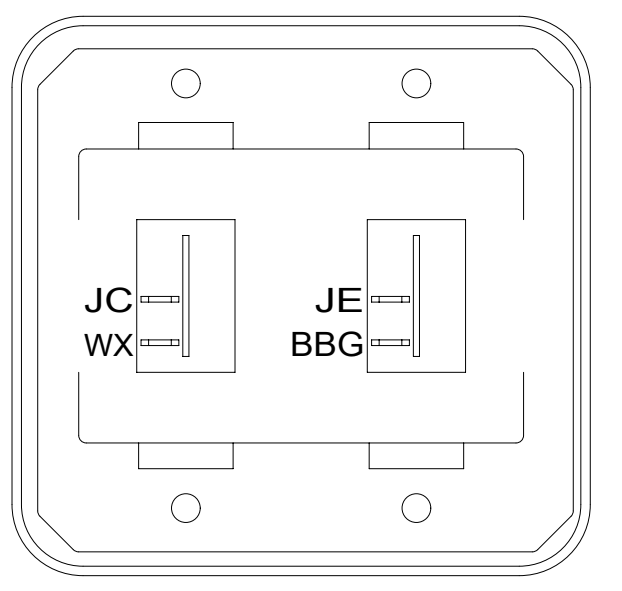
WARNING CRUSH HAZARD: Keep people and objects clear of the inside and the outside of the slideout room when operating. Failure to comply could result in death or serious injury.



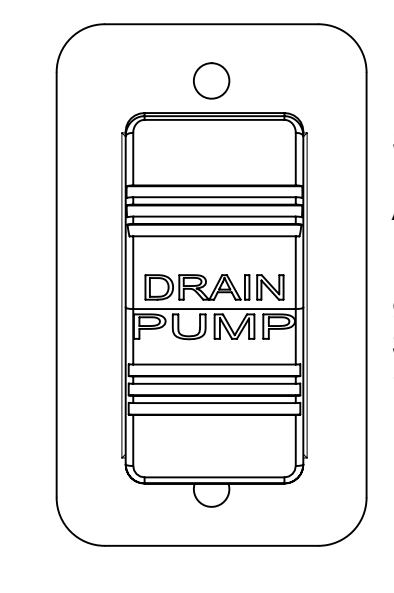
SWITCH-ROCKER
135740-01-CHT (2)
SWITCH-BASE
135741-02-CHT
SWITCH-BEZEL
135742-02-CHT
SCREW
G11-08-08U (4)



SWITCH-ROCKER
135740-01-CHT
SWITCH-BASE
135741-01-CHT
SWITCH-BEZEL
135742-01-CHT
SCREW
G11-08-08U (2)



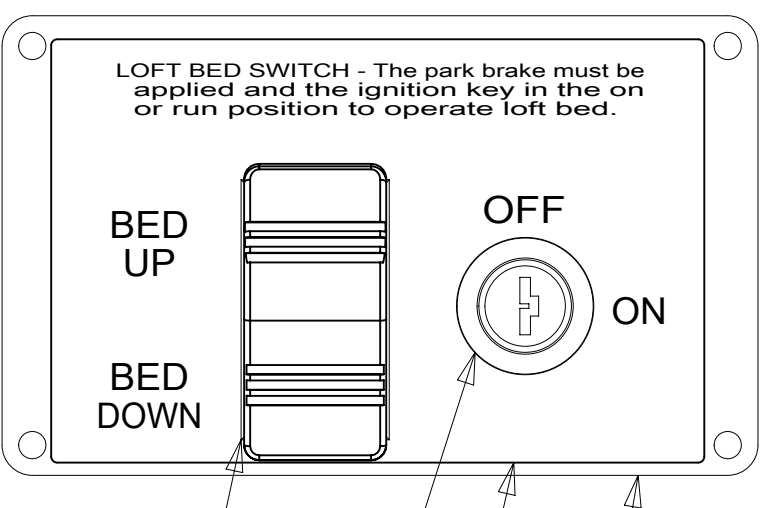
SWITCH-ROCKER
135740-01-CHT (2)
SWITCH-BASE
135741-02-CHT
SWITCH-BEZEL
135742-02-CHT
SCREW
G11-08-08U (4)



SWITCH-ROCKER
108357-09-000
ACTUATOR
108356-27-CHT
PLATE
98351-07-CHT
SCREW
G11-06-10U (2)

LABEL-SLIDEOUT,
DRIVER,FRONT
163992-01-CHT

SWITCH
108357-18-000
ACTUATOR
108356-31-CHT
CIRCUITS
DU,KE,DR,ABY,ABZ



SWITCH-ROCKER
108357-07-000
ACTUATOR
108356-01-CHT
CIRCUITS
EB,ZZY,ZZZ

SWITCH-KEY,
SPST-ILLINOIS LCK
163097-01-000
(CIRCUITS: JD,JD-1)

LABEL-LOFT BED SWITCH
000042109 / 320011-01-CHT

PLATE-KEY, LOFT BED
000041278 / 319697-01-CHT
SCREW
76790-05-000 (4)

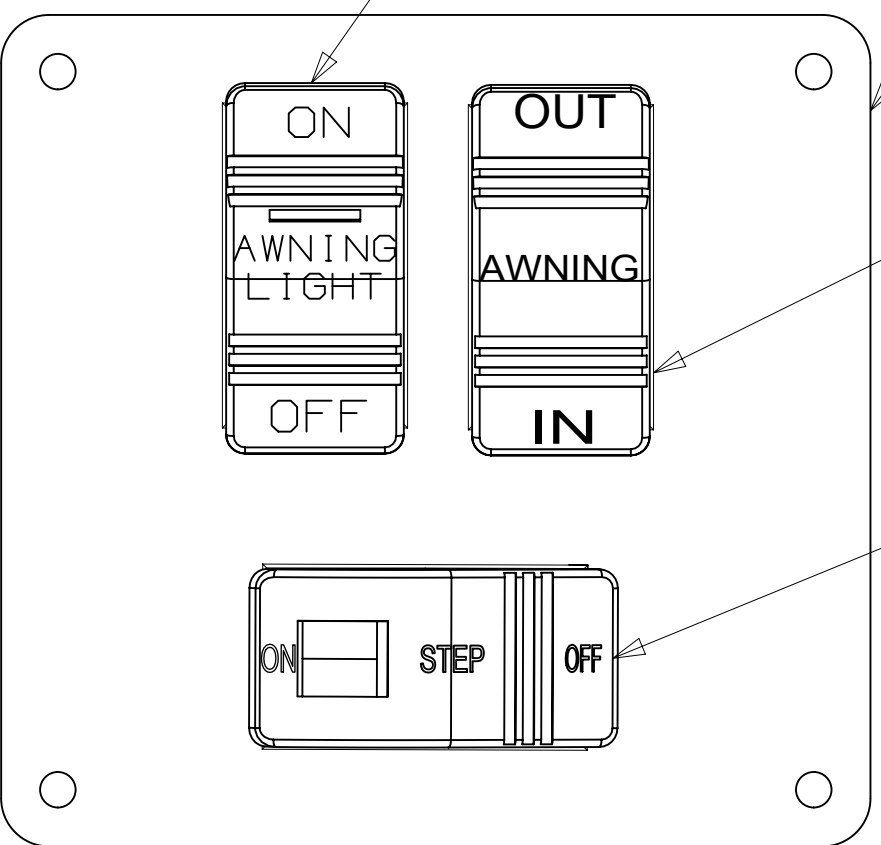
DETAIL DA

SWITCH-AWNING
108357-14-000
ACTUATOR-SWITCH
108356-28-CHT
CIRCUITS
SP,ZZL,WE

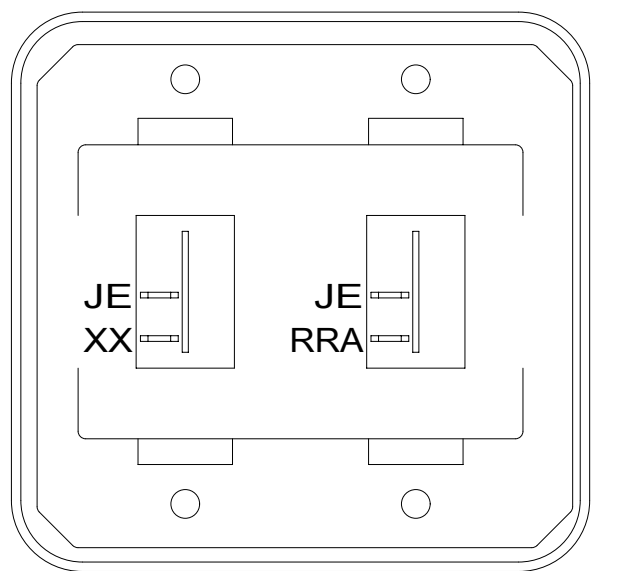
PLATE-SWITCH
158431-21-CHT
SCREW
G11-06-10U (4)

SWITCH-AWNING
108357-06-000
ACTUATOR-SWITCH
108356-12-CHT
CIRCUITS
FFD,FFR,FFE
FFE,JJR,FFD

SWITCH-STEP
108357-19-000
CIRCUITS ER,ES

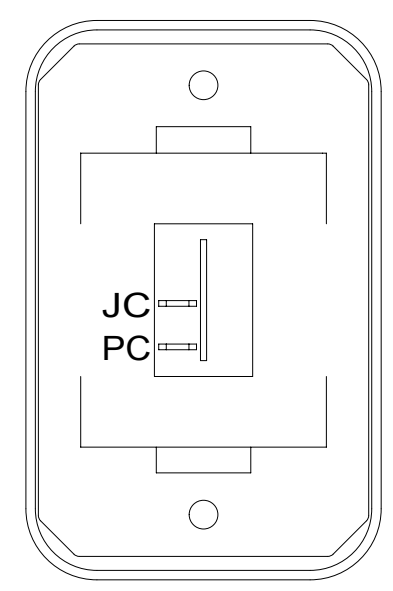


DETAIL DF 1



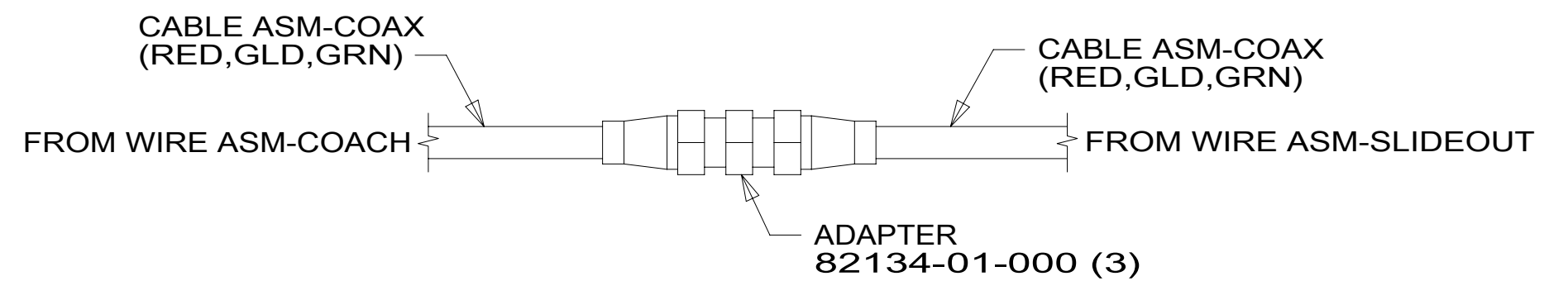
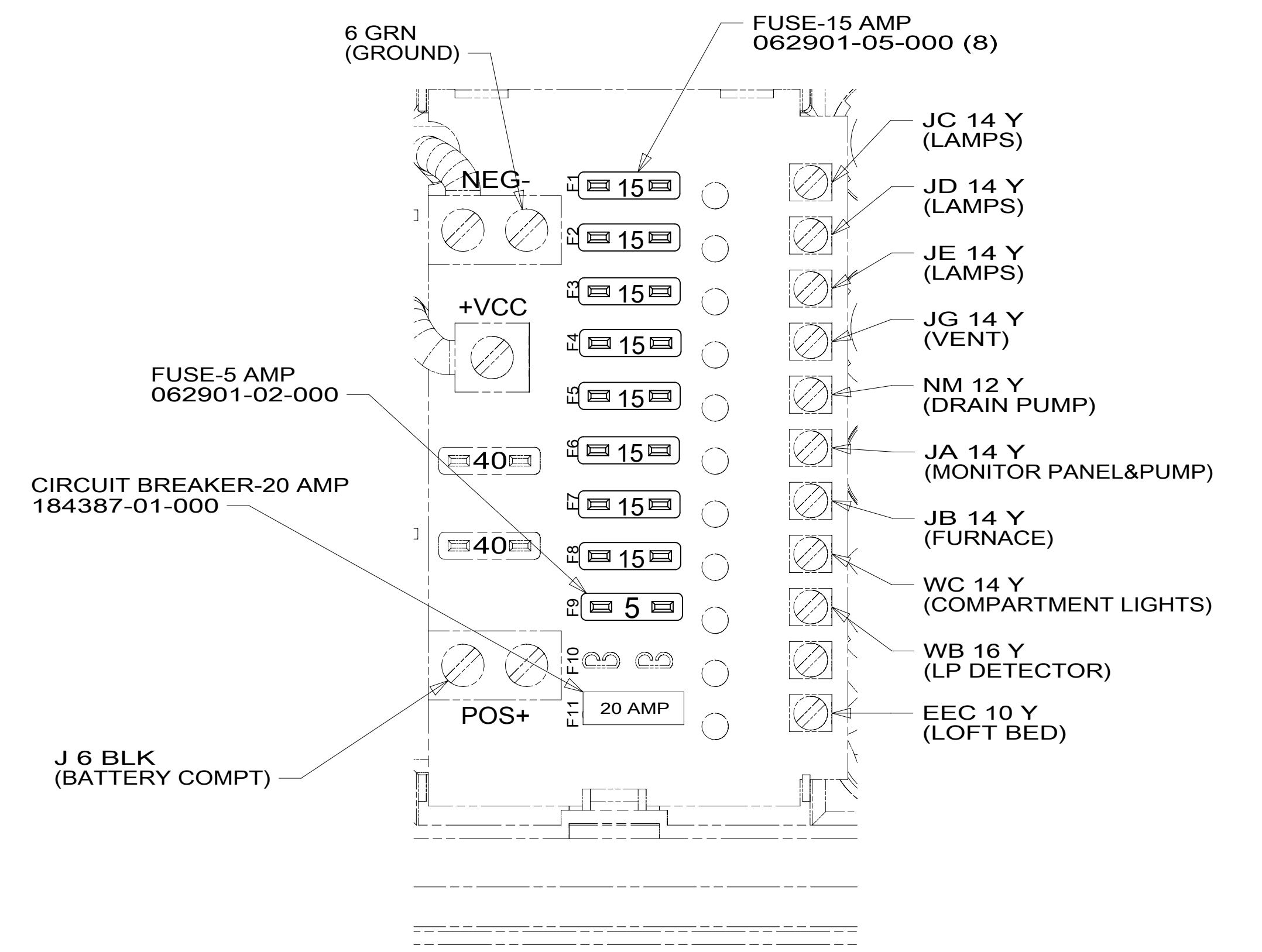
SWITCH-ROCKER
135740-01-CHT (2)
SWITCH-BASE
135741-02-CHT
SWITCH-BEZEL
135742-02-CHT
SCREW
G11-08-08U (4)

DETAIL DB



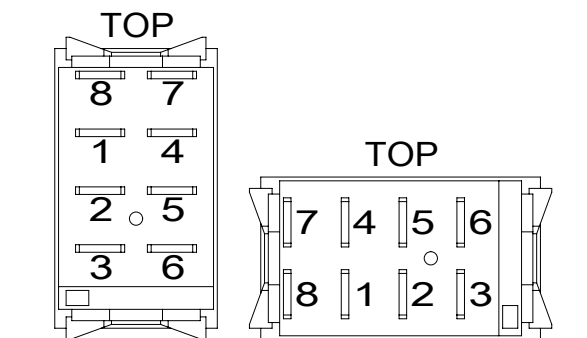
SWITCH-ROCKER
135740-01-CHT
SWITCH-BASE
135741-01-CHT
SWITCH-BEZEL
135742-01-CHT
SCREW
G11-08-08U (2)

DETAIL DC



DETAIL DJ

DETAIL DK



DETAIL DL

265 CODES/STANDARDS-CSA/CMVSS
1B1 CODES/STANDARDS USA

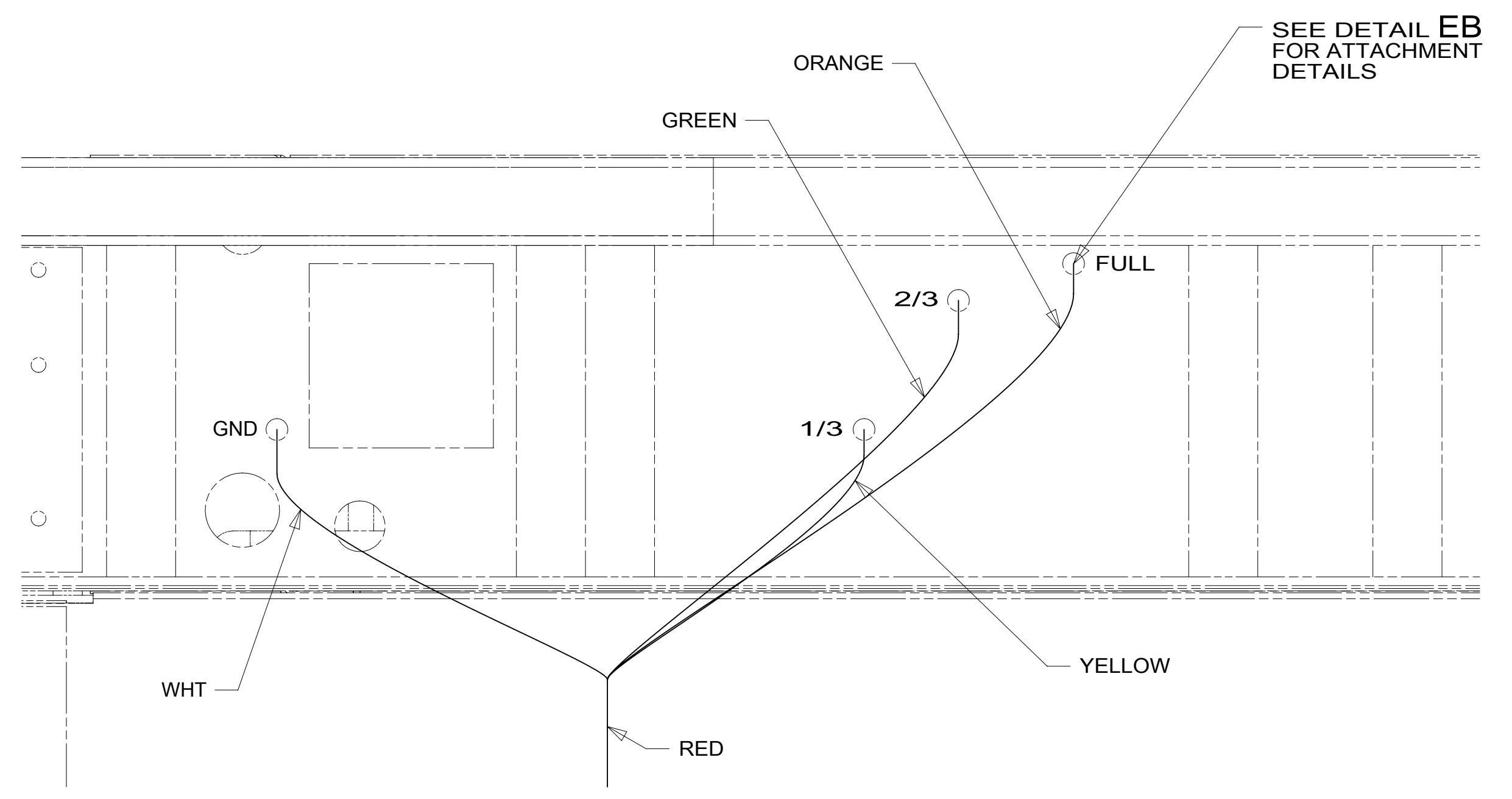
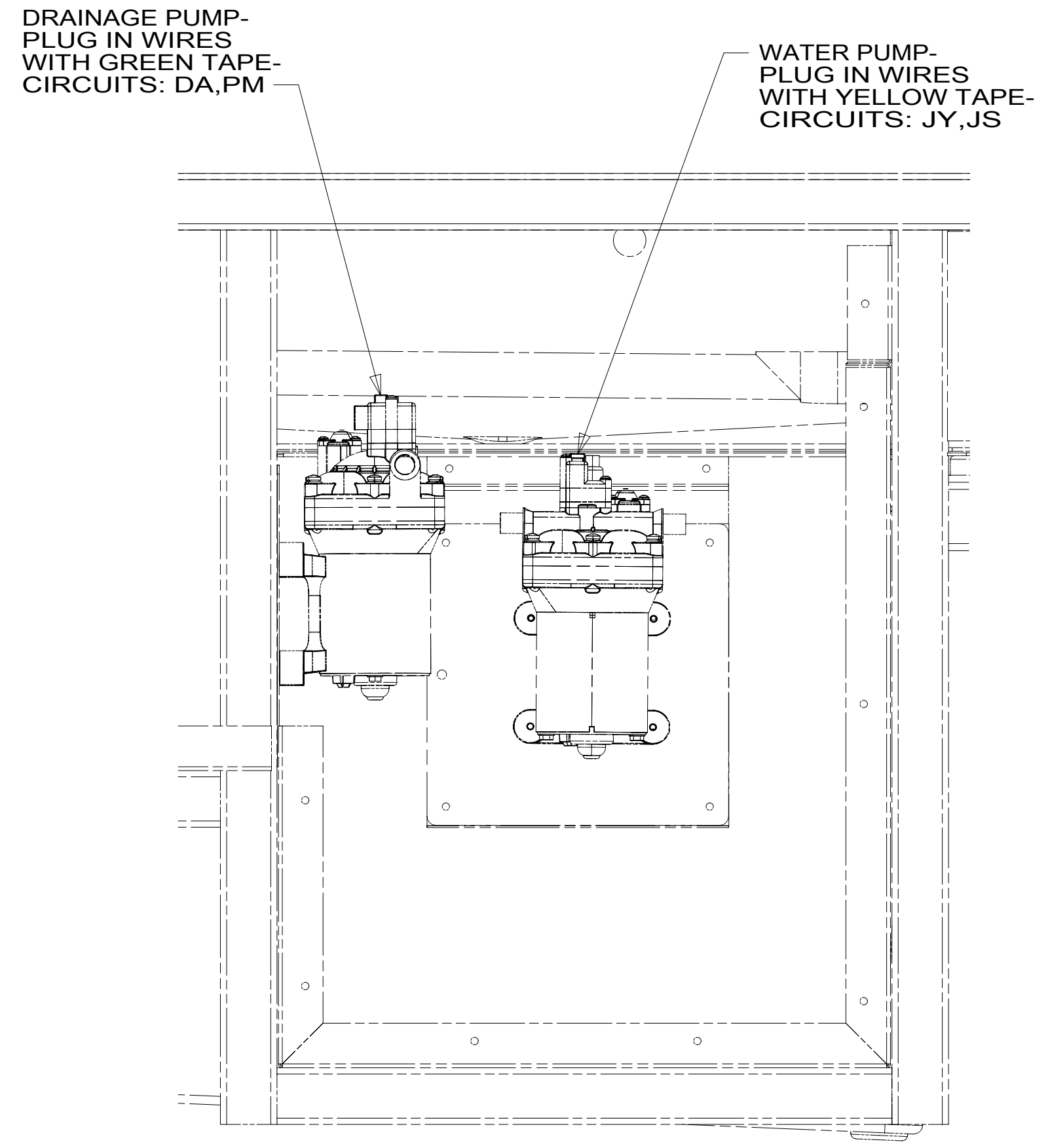
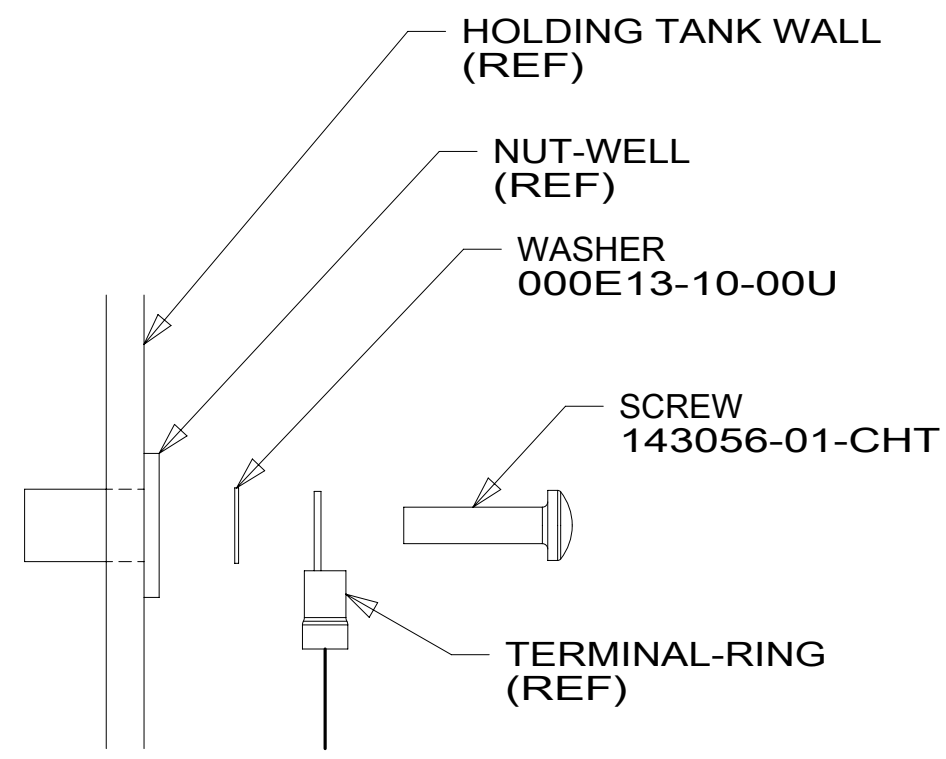
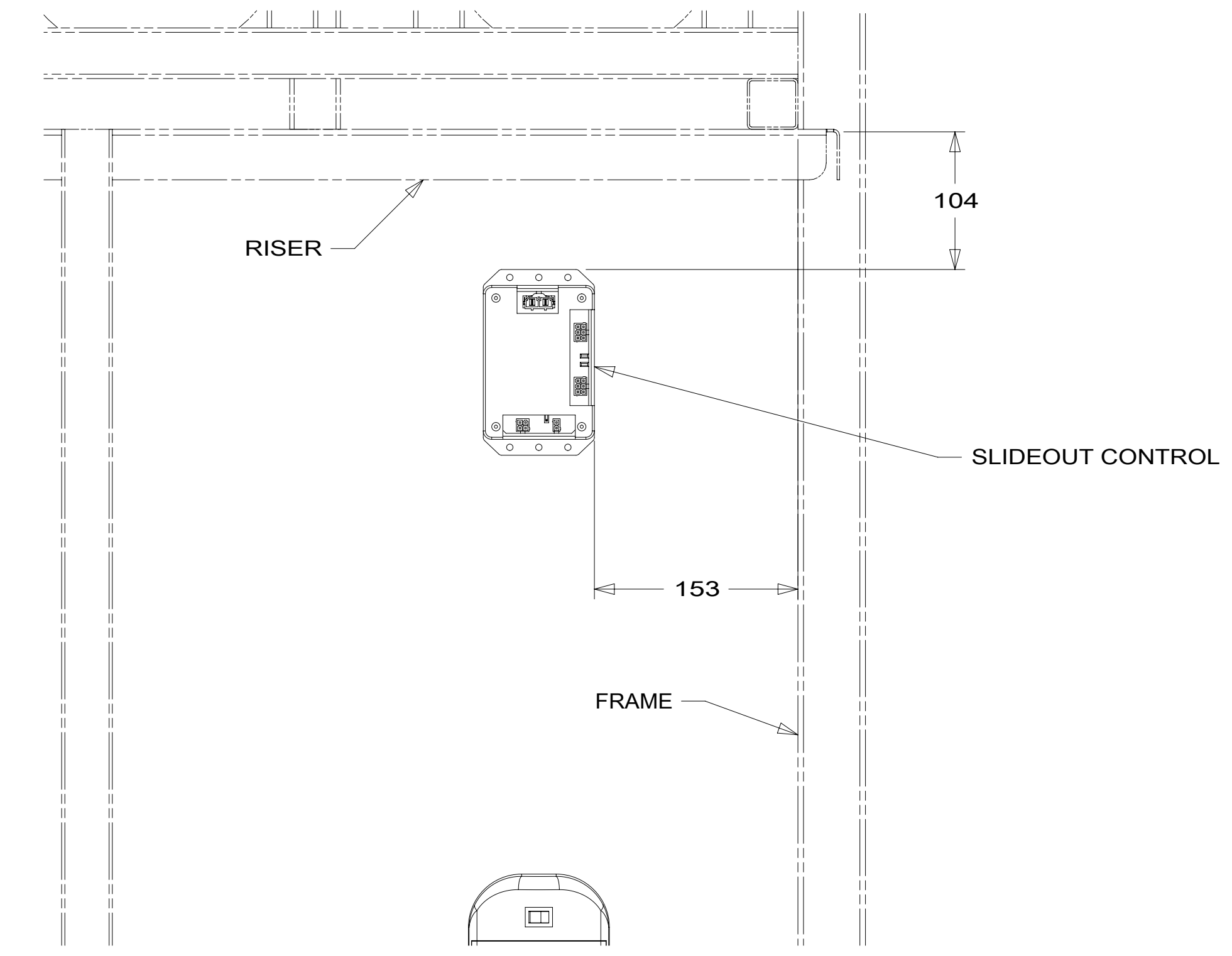
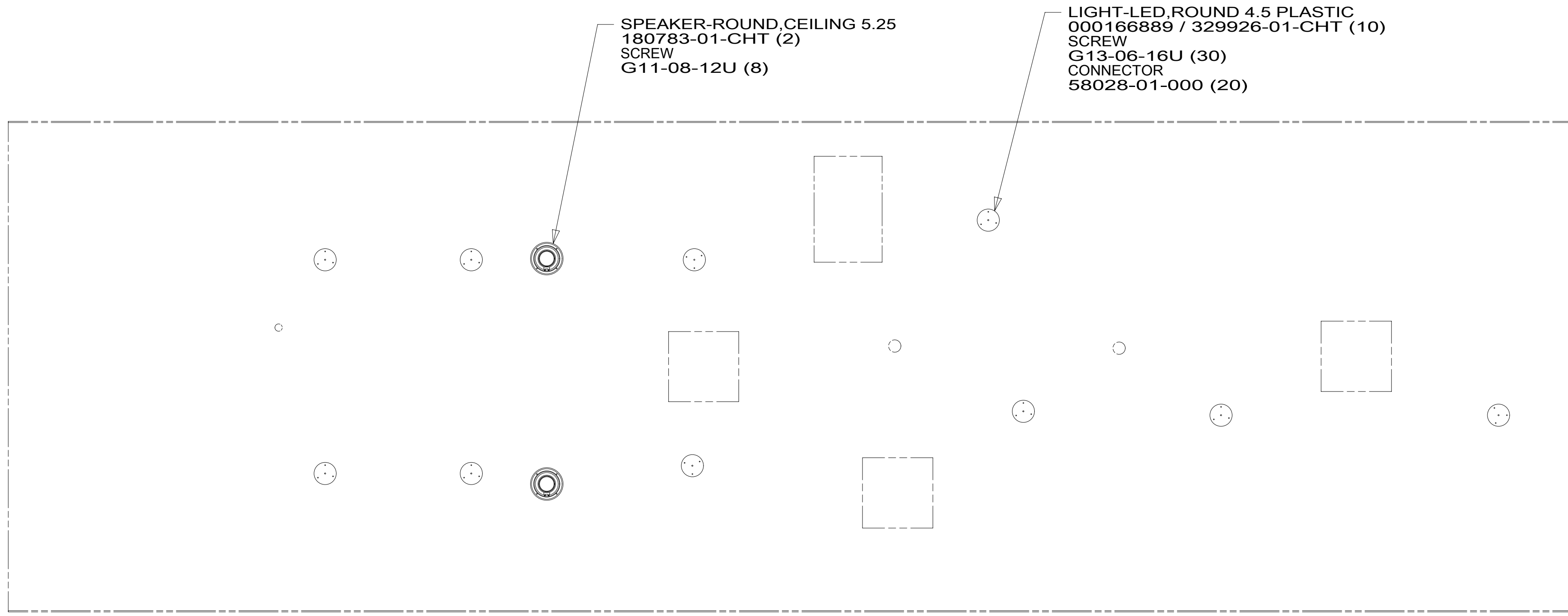
FOR ELECTRICAL
TORQUE
SPECIFICATIONS
SEE DWG NO.
128783-01-000

FOR
ELECTRICAL
CALLOUTS
SEE DWG NO.
121339-01-000

DESCRIPTION:
WIRING INSTL-BODY, 12V
SHEET: 4 OF 6 ITEM/PART NO: 000122521 / 32333001000 REV

NOTES:
1 FOR SWITCH ORIENTATION SEE DETAIL DL.

8 7 6 5 4 3 2 1 09-Oct-2018



1 TYPICAL WIRE ATTACHMENT AT ALL LEVEL PROBES (4 EACH) FOR WATER, MAIN, AND AUX HOLDING TANKS.

FOR ELECTRICAL TORQUE SPECIFICATIONS SEE DWG NO. 128783-01-000

FOR ELECTRICAL CALLOUTS SEE DWG NO. 121339-01-000

- 265 CODES/STANDARDS-CSA/CMVSS
- 1B1 CODES/STANDARDS USA

DESCRIPTION:		1B1 265	
WIRING INSTL-BODY, 12V			
SHEET:	ITEM/PART NO.:	REV	
5 OF 6	000122521 / 32333001000		

8 7 6 5 4 3 2 1

D

D

C

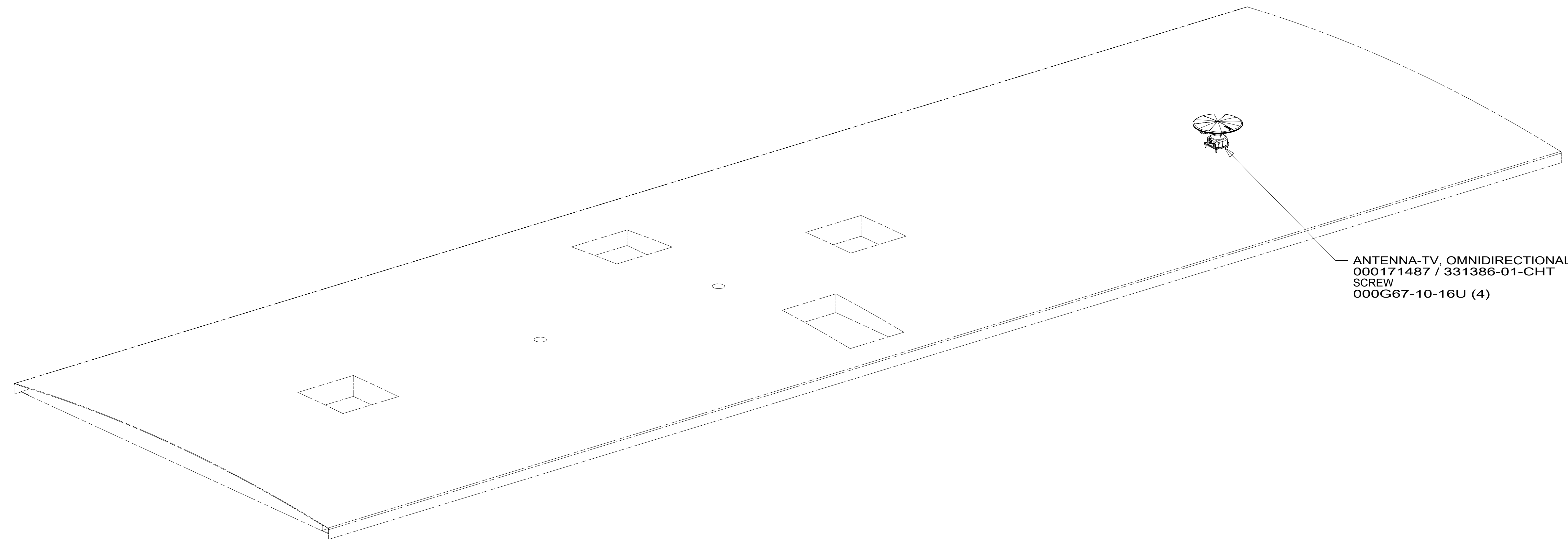
C

B

B

A

A



ANTENNA-TV, OMNIDIRECTIONAL
 000171487 / 331386-01-CHT
 SCREW
 000G67-10-16U (4) 1

1 SEE ANTENNA INSTALLATION MANUAL FOR CORRECT
 INSTALLATION PROCEDURE.

NOTES:

FOR ELECTRICAL
 TORQUE
 SPECIFICATIONS
 SEE DWG NO.
 128783-01-000

FOR
 ELECTRICAL
 CALLOUTS
 SEE DWG NO.
 121339-01-000

265 CODES/STANDARDS-CSA/CMVSS
1B1 CODES/STANDARDS USA

1B1 265

DESCRIPTION:
WIRING INSTL-BODY, 12V

SHEET: 6 OF 6	ITEM/PART NO: 000122521 / 32333001000	REV
------------------	--	-----

8 7 6 5 4 3 2 1 09-Oct-2018