

8 7 6 5 4 3 2 1

D

D

C

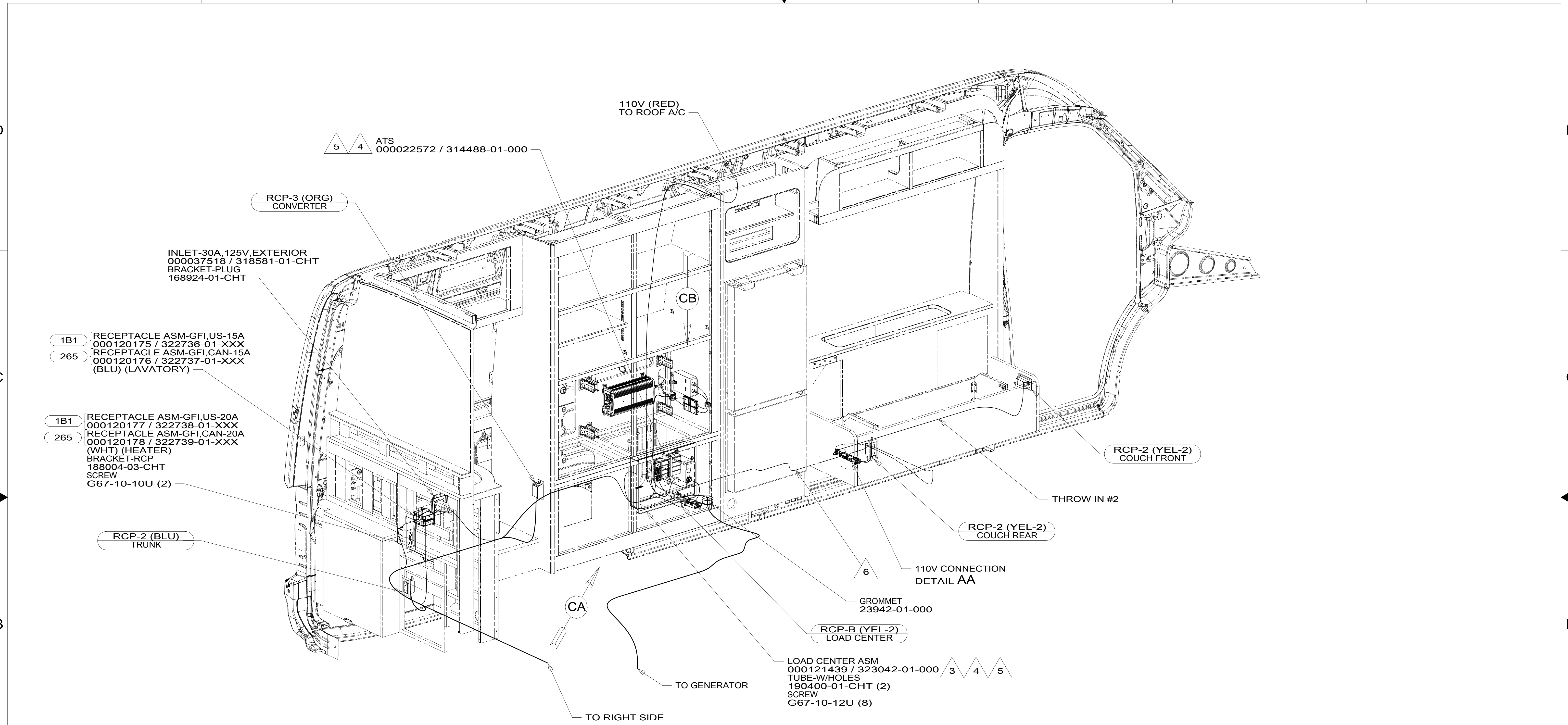
C

B

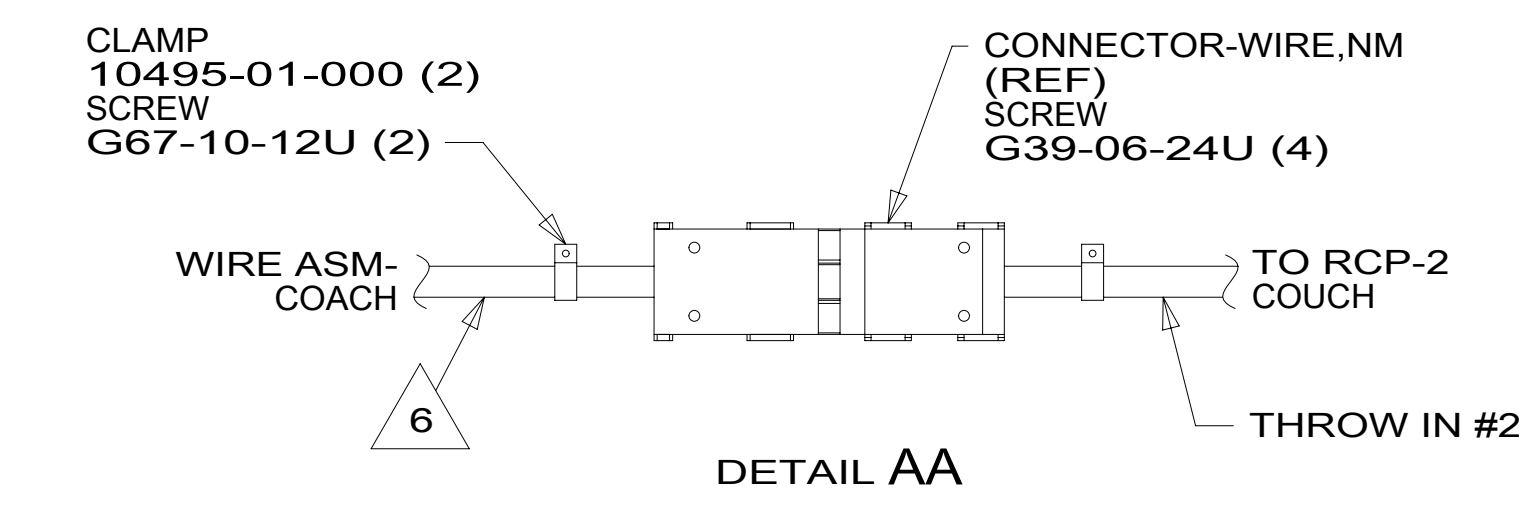
B

A

A



- NOTES:
- 1. AT MINIMUM ALL WIRES TO BE SUPPORTED AND SECURED PER CODE REQUIREMENTS. USE CLAMP 10495 OR 10497 OR WIRE TIE 8343 OR 108046 AND SCREW G67-XX-XXX OR G56-XX-XXX AS APPROPRIATE FOR INSTALLATION.
 - 2. ALL 110V WIRES TO BE CLAMPED WITH CLAMP 10495-05-000 WITHIN 200MM OF OUTLET BOXES, USE SCREW G67-10-12U.



FOR ELECTRICAL TORQUE SPECIFICATIONS SEE DWG NO. 128783-01-000

FOR ELECTRICAL CALLOUTS SEE DWG NO. 121339-01-000

265 CODES/STANDARDS-CSA/CMVSS
 1B1 CODES/STANDARDS USA

1B1 265

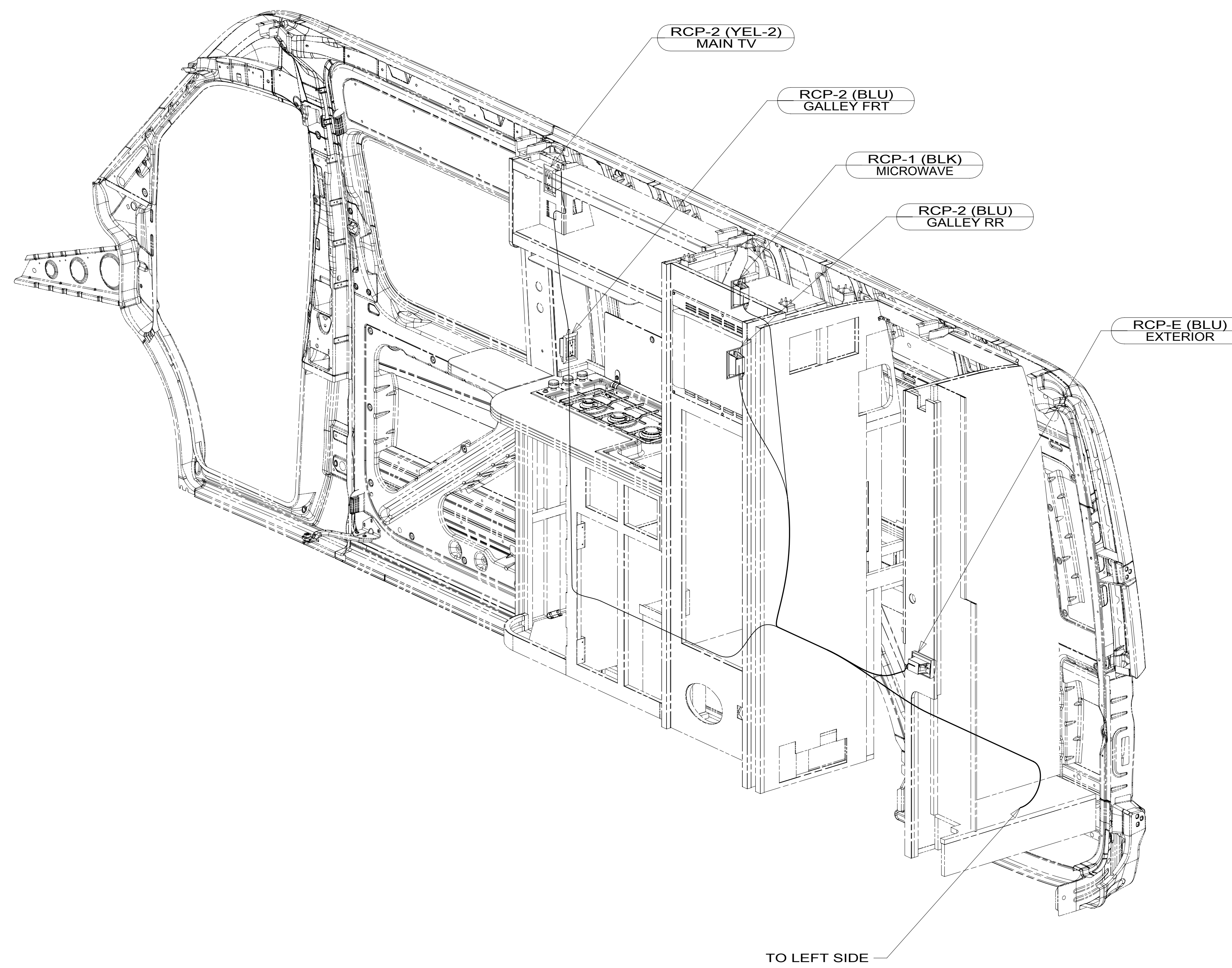
WINNEBAGO
 COPYRIGHT 2016 WINNEBAGO INDUSTRIES, INC.

DSNR:	ALL DIMENSIONS ARE IN MILLIMETERS	
DFFR:		
UNSPECIFIED TOLERANCES:	MATERIAL:	
WHOLE DIM (X) : 3		
ONE-PLACE (X.X) : 1.5		
TWO-PLACE (X.XX) : 0.50		
ANGLE : 1°		
REFER TO ES0018 FOR FASTENER TIGHTENING GUIDELINES	WEIGHT: (LBS)	FIRST USED: 18 170M
DESCRIPTION: WIRING INSTL-BODY, 110V		
SHEET: 1 OF 5	ITEM/PART NO: 000121781 / 32310301000	REV:
REF: 1		22-Mar-2018

8 7 6 5 4 3 2 1

8 7 6 5 4 3 2 1

D
C
B
A



- NOTES:
1. AT MINIMUM ALL WIRES TO BE SUPPORTED AND SECURED PER CODE REQUIREMENTS. USE CLAMP 10495 OR 10497 OR WIRE TIE 8343 OR 108046 AND SCREW G67-XX-XXX OR G56-XX-XXX AS APPROPRIATE FOR INSTALLATION.
 2. ALL 110V WIRES TO BE CLAMPED WITH CLAMP 10497-05-000 WITHIN 200MM OF OUTLET BOXES, USE SCREW G67-10-12B.

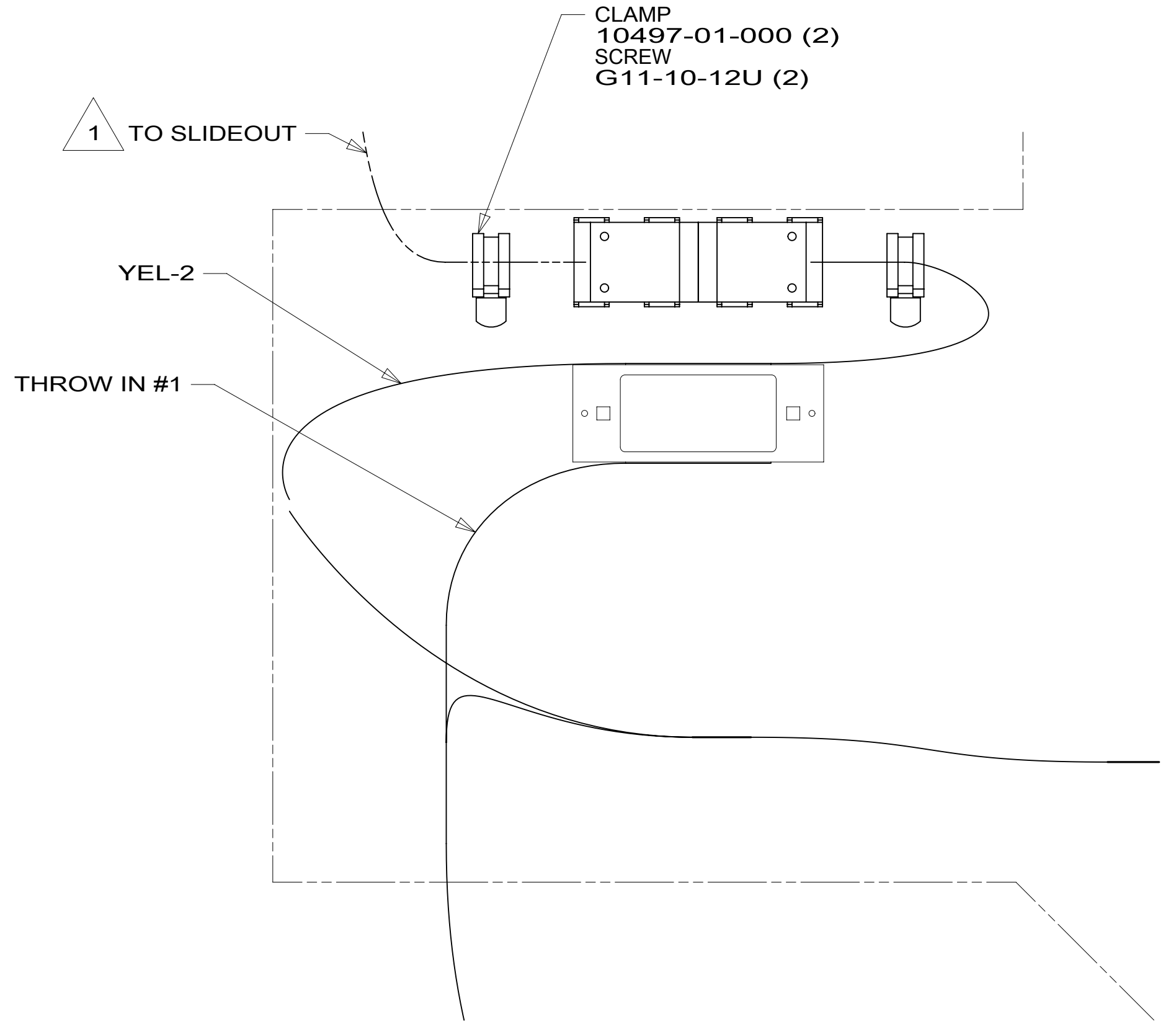
265 CODES/STANDARDS-CSA/CMVSS
 1B1 CODES/STANDARDS USA

FOR ELECTRICAL TORQUE SPECIFICATIONS SEE DWG NO. 128783-01-000

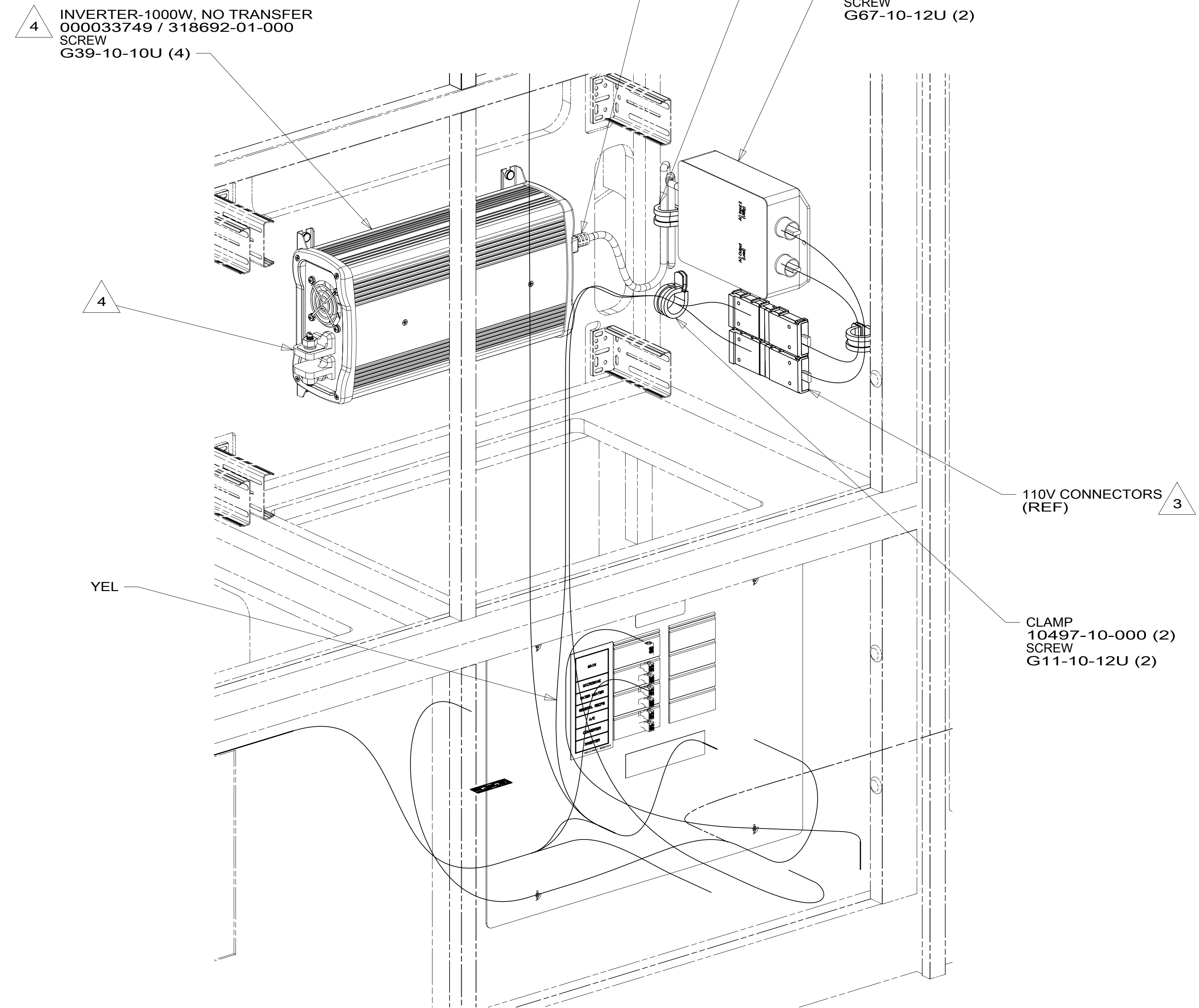
FOR ELECTRICAL CALLOUTS SEE DWG NO. 121339-01-000

DESCRIPTION:	1B1 265	
WIRING INSTL-BODY, 110V		
SHEET:	ITEM/PART NO.:	REV
2 OF 5	000121781 / 32310301000	

8 7 6 5 4 3 2 1 22-Mar-2018



VIEW CB



VIEW CA

- NOTES:
- 4 CONNECT ORG CABLE TO RED(+) TERMINAL, BLK CABLE TO WHITE(-) TERMINAL, GROUND TO GROUND LUG.
 - 3 CONNECT INVERTER INPUT TO YEL WIRE AND INVERTER OUTPUT TO YEL-2 WIRE.
 - 2 PLUG TRANSFER SWITCH INTO 110V OUTLET IN INVERTER FRONT.
 - 1 WIRE IS PART OF WIRE ASM-COACH.

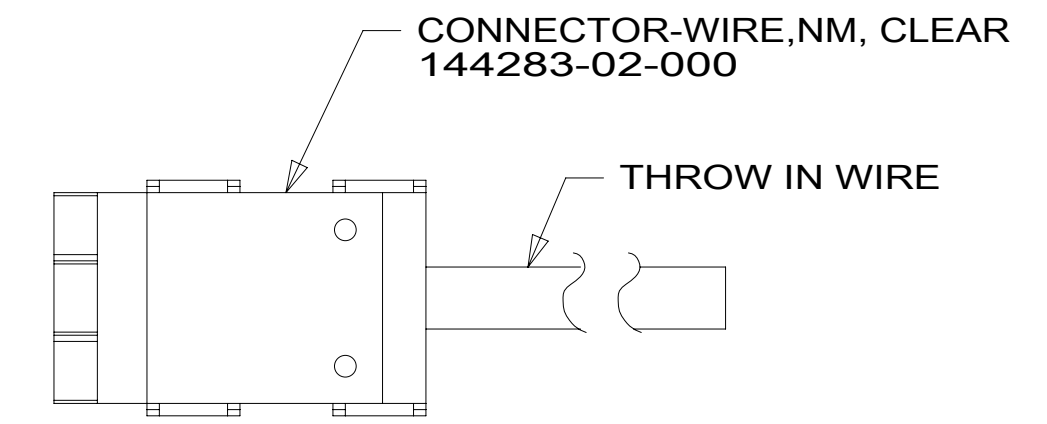
265 CODES/STANDARDS-CSA/CMVSS
1B1 CODES/STANDARDS USA

FOR ELECTRICAL TORQUE SPECIFICATIONS SEE DWG NO. 128783-01-000

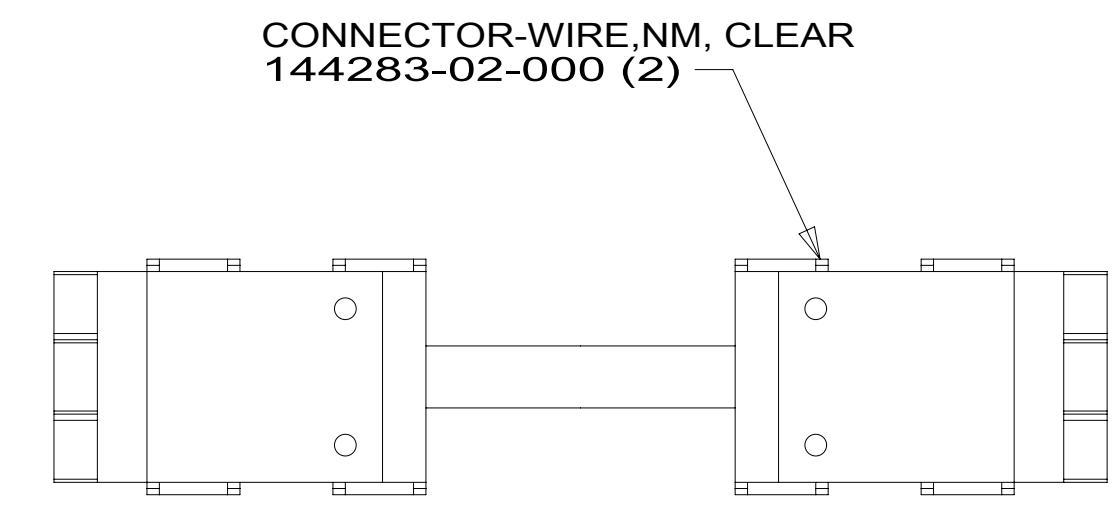
FOR ELECTRICAL CALLOUTS SEE DWG NO. 121339-01-000

DESCRIPTION:	1B1 265	
WIRING INSTL-BODY, 110V		
SHEET:	ITEM/PART NO:	REV
3 OF 5	000121781 / 32310301000	

RED	1B1	136135-07-040	
	265	136136-07-040	
ORG	1B1	136131-05-040	
	265	136134-05-040	
BLK	1B1	136131-06-090	
	265	136134-06-090	
BLU	1B1	136131-02-175	
	265	136134-02-175	
WHT	1B1	136135-09-045	
	265	136136-09-045	
YEL	1B1	136131-05-020	6
	265	136134-05-020	6
YEL-2	1B1	136131-13-016	7
	265	136134-13-016	7
MAIN	1B1	136137-01-018	
	265	136138-01-018	
THROW IN #1	1B1	136131-13-090	
	265	136134-13-090	
THROW IN #2	1B1	136131-13-030	6
	265	136134-13-030	6
MAIN EXTENSION	1B1	136137-01-026	
	265	136138-01-026	
GROUND MAIN		136145-05-066	4
CORD-POWER ASM		183140-01-000	5
GROUND ATS		136145-05-066	4



DETAIL DA



DETAIL DB

- 7 FOR CONNECTOR INSTALLATION SEE DETAIL DB.
- 6 FOR CONNECTOR INSTALLATION SEE DETAIL DA.
- 5 DO NOT HI-POT POWER CORD, LED INDICATOR LIGHT MAY FAIL.
- 4 GROUND WIRES TO BE INSTALLED ON MFG LINE. SHIP GROUND WIRES LOOSE WITH LOAD CENTER.
3. SEE WIRING INSTL-BODY, 12V FOR ADDITIONAL INFORMATION.
2. SECURE WIRES TO BACKSIDE OF LOAD CENTER WITH WIRE TIE 116673-01-000.
1. ALL GROUNDS WIRES TO BE COVERED WITH TUBING 8041-02-000.
- NOTES:

265 CODES/STANDARDS-CSA/CMVSS
1B1 CODES/STANDARDS USA

FOR ELECTRICAL TORQUE SPECIFICATIONS SEE DWG NO. 128783-01-000

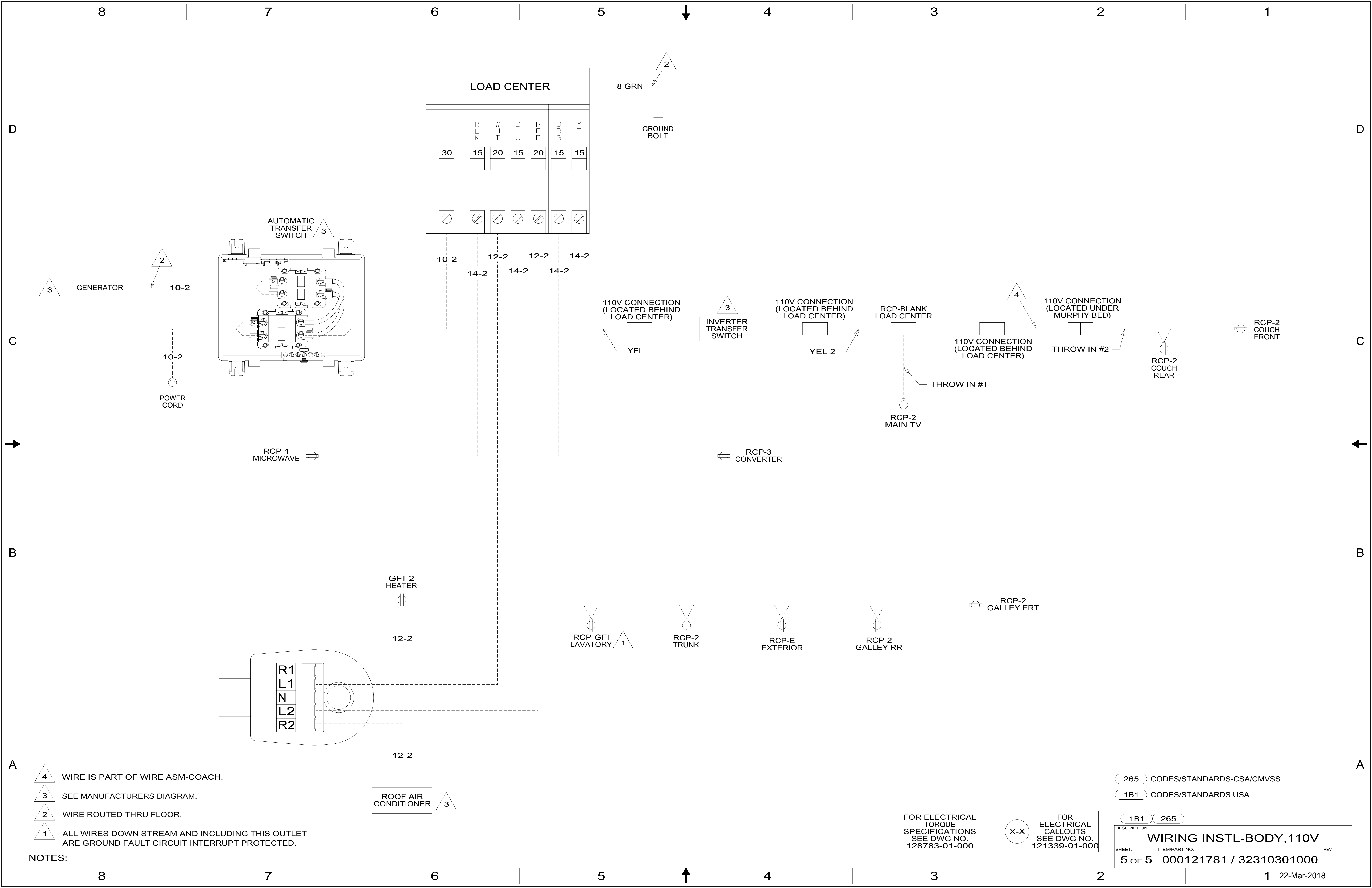
FOR ELECTRICAL CALLOUTS SEE DWG NO. 121339-01-000

1B1 265

DESCRIPTION:
WIRING INSTL-BODY, 110V

SHEET: 4 OF 5 ITEM/PART NO: 000121781 / 32310301000 REV

1 22-Mar-2018



- NOTES:
- 4 WIRE IS PART OF WIRE ASM-COACH.
 - 3 SEE MANUFACTURERS DIAGRAM.
 - 2 WIRE ROUTED THRU FLOOR.
 - 1 ALL WIRES DOWN STREAM AND INCLUDING THIS OUTLET ARE GROUND FAULT CIRCUIT INTERRUPT PROTECTED.

265 CODES/STANDARDS-CSA/CMVSS
 1B1 CODES/STANDARDS USA

FOR ELECTRICAL TORQUE SPECIFICATIONS SEE DWG NO. 128783-01-000

FOR ELECTRICAL CALLOUTS SEE DWG NO. 121339-01-000

DESCRIPTION:	1B1 265	
WIRING INSTL-BODY, 110V		
SHEET:	ITEM/PART NO:	REV
5 OF 5	000121781 / 32310301000	