

8 7 6 5 4 3 2 1

D

D

C

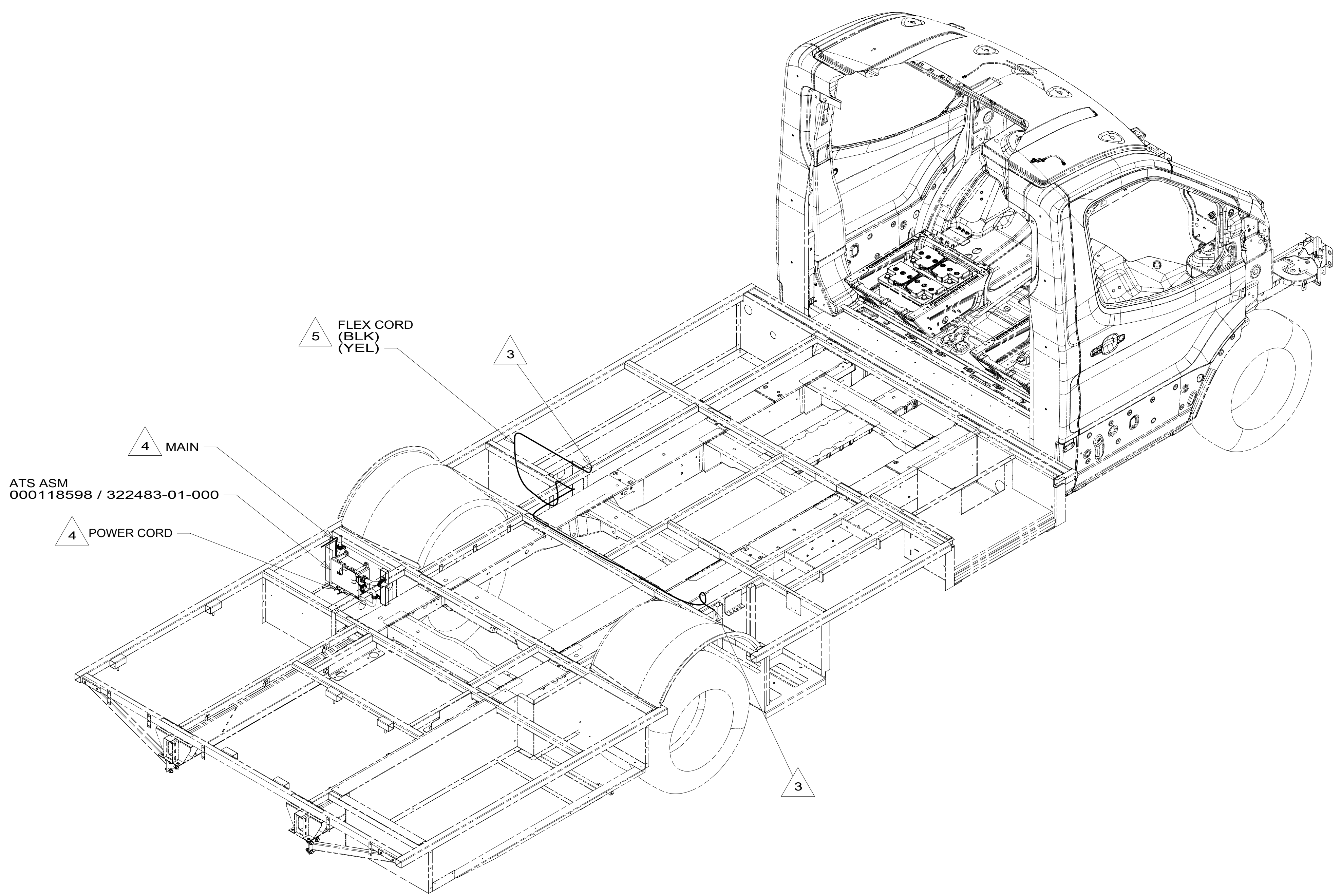
C

B

B

A

A



- 5 PART OF WIRE ASM-CHASSIS.
- 4 SEE ATS ASM FOR ADDITIONAL INFORMATION.
- 3 ROUTE WIRE THRU FLOOR.

2. ALL 110V WIRE TO BE CLAMPED WITH CLAMP 10497-05-000 WITHIN 200MM OF OUTLET BOXES, USE SCREW G67-10-12B.
1. AT MINIMUM ALL WIRES TO BE SUPPORTED AND SECURED PER CODE REQUIREMENTS. USE CLAMP 10495 OR 10497 OR WIRE TIE 8343 OR 108046 AND SCREW G67-XX-XXX OR G56-XX-XXX AS APPROPRIATE FOR INSTALLATION.

NOTES:

FOR ELECTRICAL TORQUE SPECIFICATIONS SEE DWG NO. 128783-01-000

FOR ELECTRICAL CALLOUTS SEE DWG NO. 121339-01-000

- 12D ELECTRICAL SYSTEM 30 AMP
- 265 CODES/STANDARDS-CSA/CMVSS
- 1B1 CODES/STANDARDS USA

1B1 265 12D



DSNR:	ALL DIMENSIONS ARE IN MILLIMETERS	
DIFFR:	MATERIAL:	
UNSPECIFIED TOLERANCES:	WHOLE DIM (X) :	3
ONE-PLACE (X.X) :	TWO-PLACE (X.XX) :	0.50
ANGLE :		1°
REFER TO ES0018 FOR FASTENER TIGHTENING GUIDELINES	WEIGHT: (LBS)	FIRST USED: 18 423A

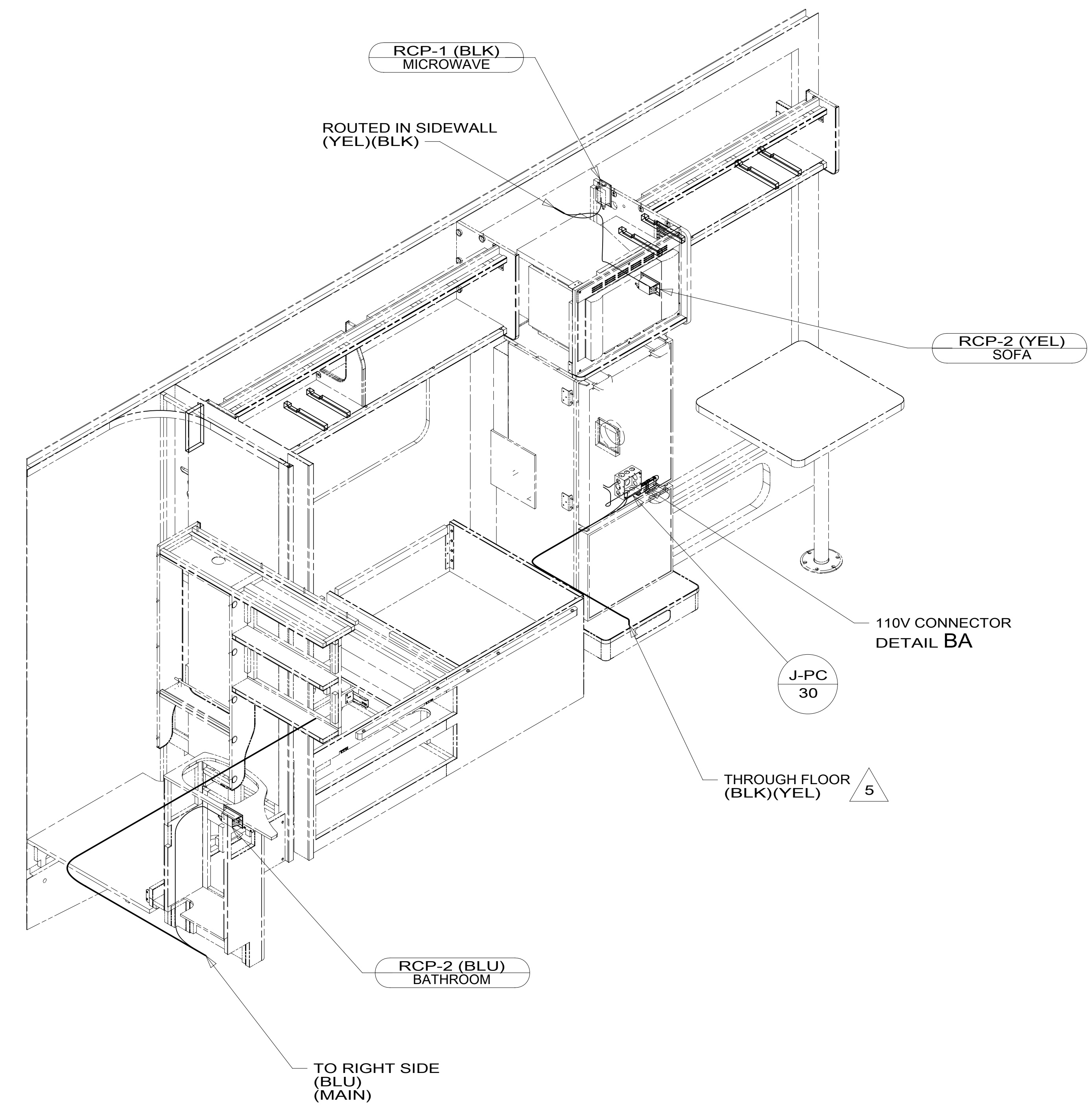
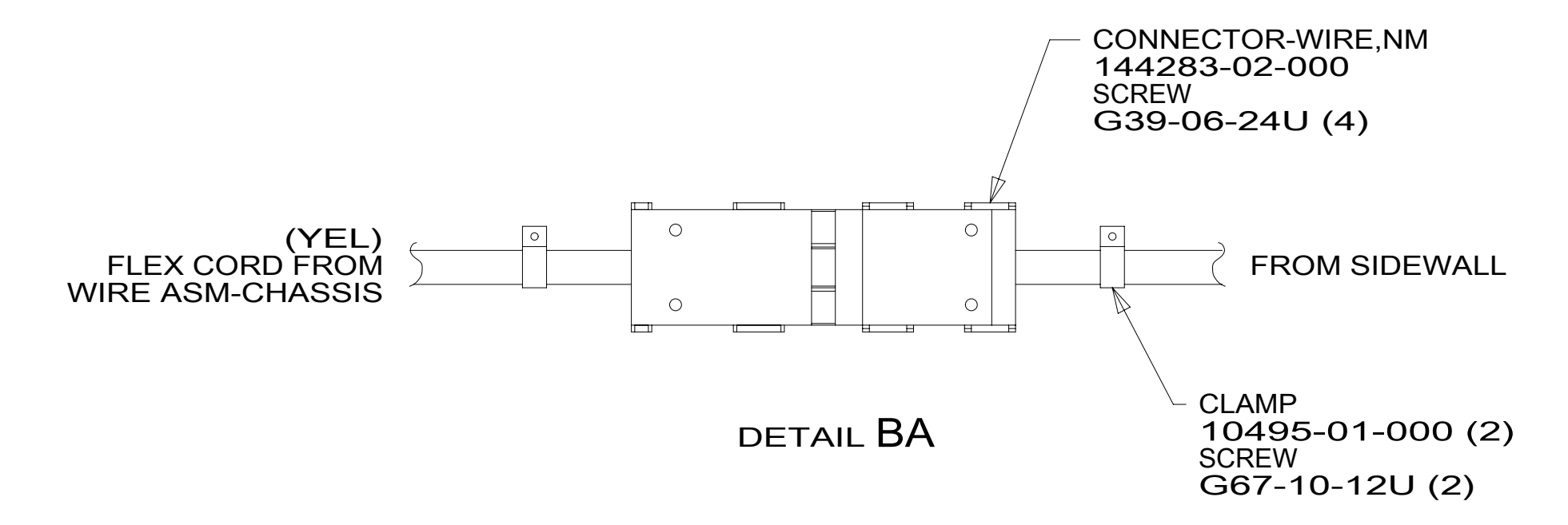
WIRING INSTL-BODY, 110V

SHEET:	ITEM/PART NO.:	REV:
1 OF 6	000120973 / 32288801000	

REF: 1 12-Dec-2017

8 7 6 5 4 3 2 1

8 7 6 5 4 3 2 1



- 5 PART OF WIRE ASM-CHASSIS.
4. FOR MORE INFORMATION SEE WIRING DIAGRAM-BODY,110V.
3. ALL GROUND WIRE TO BE COVERED WITH TUBING 8041-02-000.
2. ALL 110V WIRE TO BE CLAMPED WITH CLAMP 10497-05-000 WITHIN 200MM OF OUTLET BOXES, USE SCREW G67-10-12B.
1. AT MINIMUM ALL WIRES TO BE SUPPORTED AND SECURED PER CODE REQUIREMENTS. USE CLAMP 10495 OR 10497 OR WIRE TIE 8343 OR 108046 AND SCREW G67-XX-XXX OR G56-XX-XXX AS APPROPRIATE FOR INSTALLATION.

NOTES:

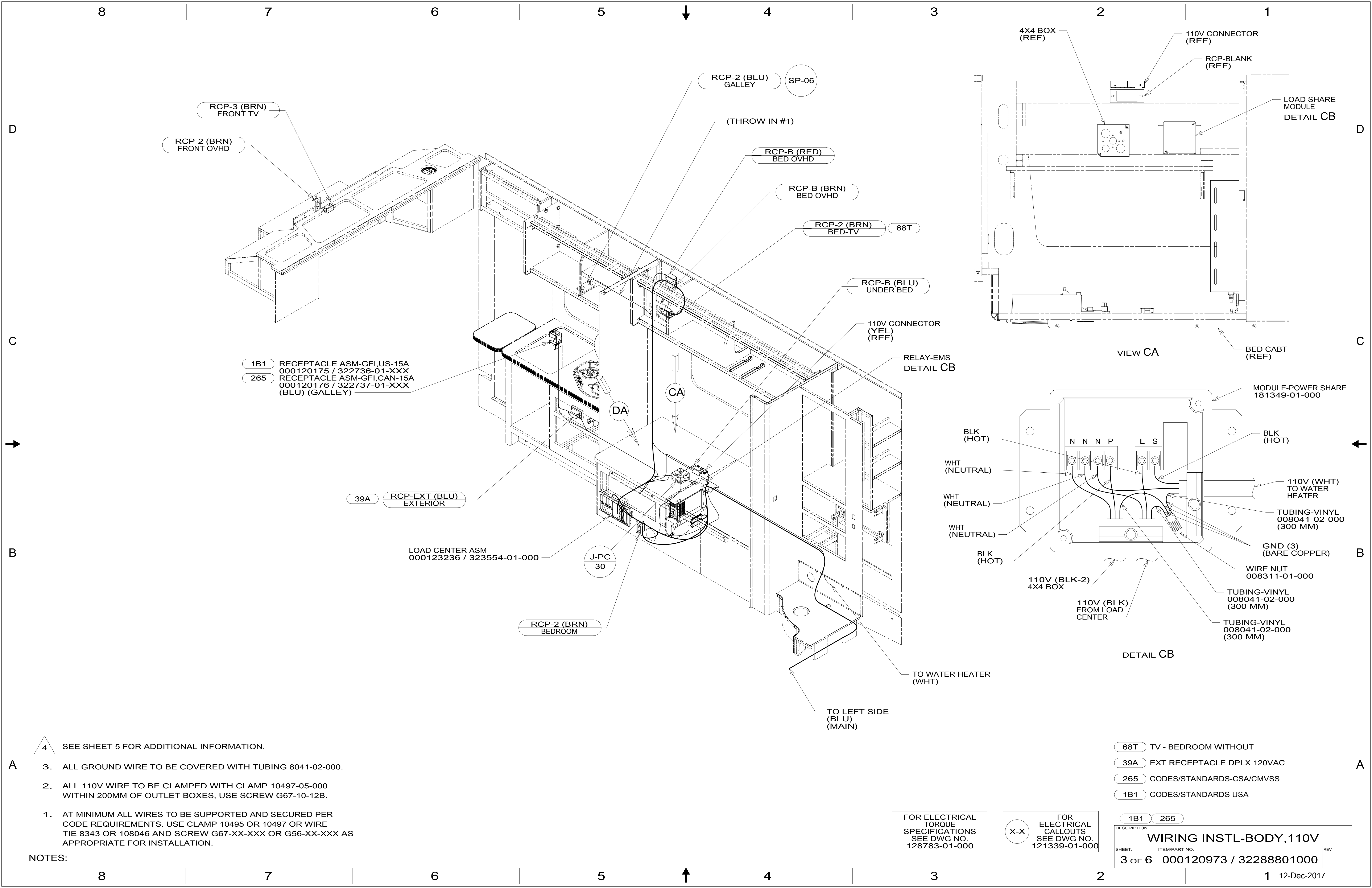
265 CODES/STANDARDS-CSA/CMVSS
1B1 CODES/STANDARDS USA

FOR ELECTRICAL TORQUE SPECIFICATIONS SEE DWG NO. 128783-01-000

FOR ELECTRICAL CALLOUTS SEE DWG NO. 121339-01-000

1B1	265	
DESCRIPTION: WIRING INSTL-BODY,110V		
SHEET: 2 OF 6	ITEM/PART NO: 000120973 / 32288801000	REV

8 7 6 5 4 3 2 1 12-Dec-2017



1B1 RECEPTACLE ASM-GFI,US-15A
000120175 / 322736-01-XXX
265 RECEPTACLE ASM-GFI,CAN-15A
000120176 / 322737-01-XXX
(BLU) (GALLEY)

LOAD CENTER ASM
000123236 / 323554-01-000

FOR ELECTRICAL
TORQUE
SPECIFICATIONS
SEE DWG NO.
128783-01-000

FOR
ELECTRICAL
CALLOUTS
SEE DWG NO.
121339-01-000

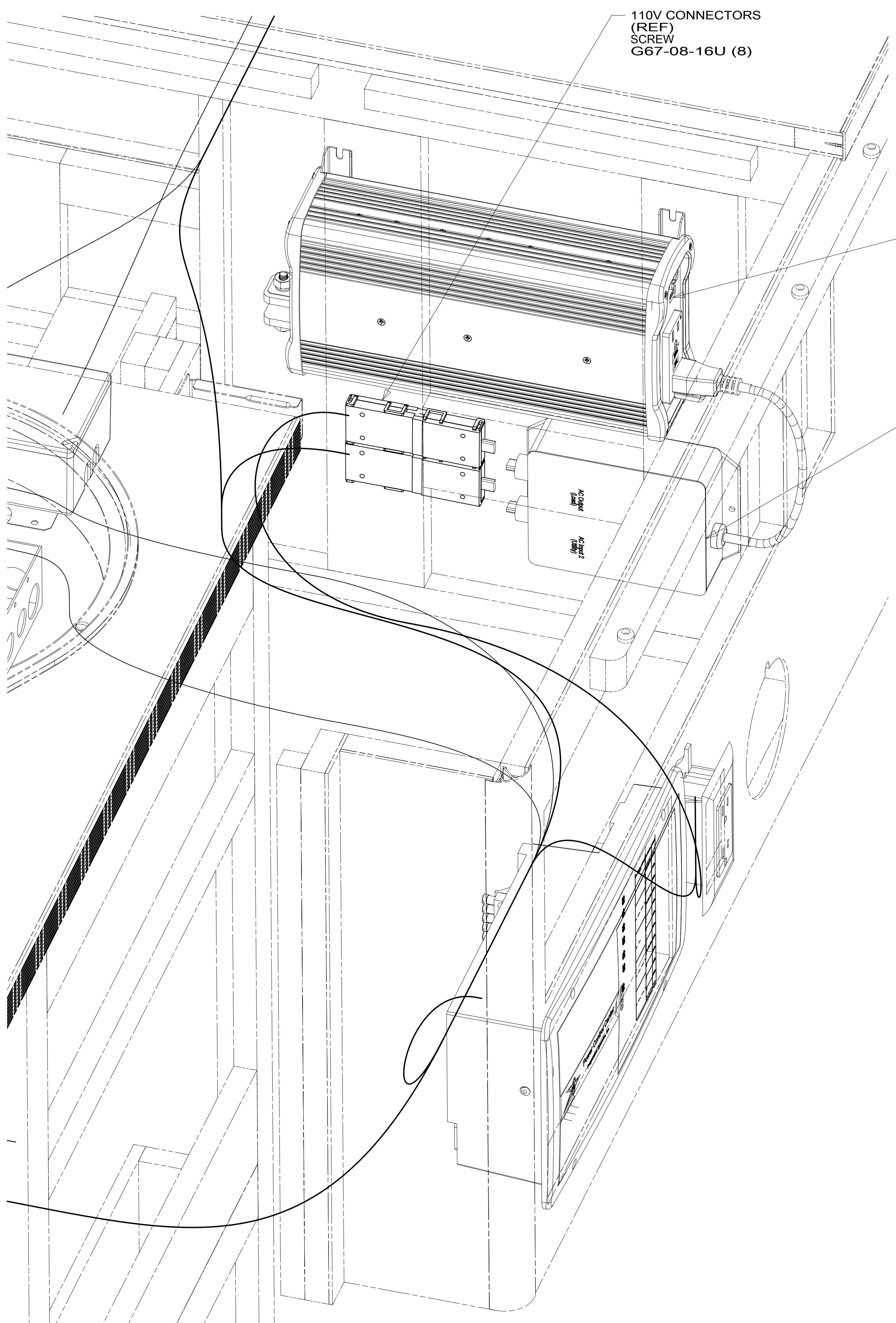
- 68T TV - BEDROOM WITHOUT
- 39A EXT RECEPTACLE DPLX 120VAC
- 265 CODES/STANDARDS-CSA/CMVSS
- 1B1 CODES/STANDARDS USA

DESCRIPTION:	
WIRING INSTL-BODY, 110V	
SHEET:	ITEM/PART NO.:
3 OF 6	000120973 / 32288801000
REV	

- NOTES:
1. AT MINIMUM ALL WIRES TO BE SUPPORTED AND SECURED PER CODE REQUIREMENTS. USE CLAMP 10495 OR 10497 OR WIRE TIE 8343 OR 108046 AND SCREW G67-XX-XXX OR G56-XX-XXX AS APPROPRIATE FOR INSTALLATION.
 2. ALL 110V WIRE TO BE CLAMPED WITH CLAMP 10497-05-000 WITHIN 200MM OF OUTLET BOXES, USE SCREW G67-10-12B.
 3. ALL GROUND WIRE TO BE COVERED WITH TUBING 8041-02-000.



SEE SHEET 5 FOR ADDITIONAL INFORMATION.

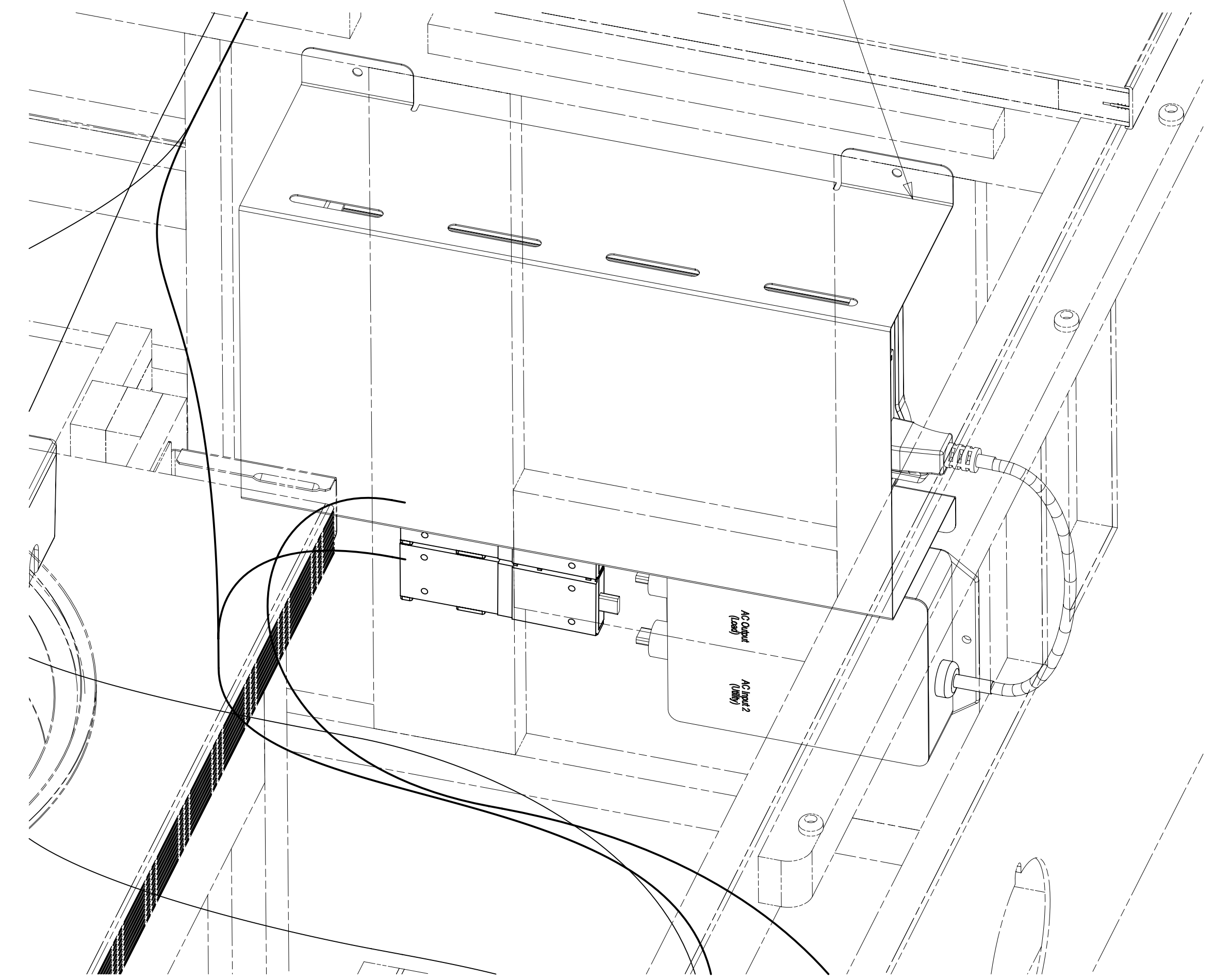


110V CONNECTORS
(REF)
SCREW
G67-08-16U (8)

INVERTER-1000W, NO TRANSFER
000033749 / 318692-01-000
SCREW
G67-10-12U (4)

SWITCH-TRANSFER,INVERTER, 15 AMP
000033766 / 318693-01-000
SCREW
G67-10-12U (2)

COVER-FORMED,INVERTER
000046434 / 321281-01-CHT
SCREW
G67-08-12U (4)



VIEW DA

VIEW DA
(COVER NOT SHOWN)

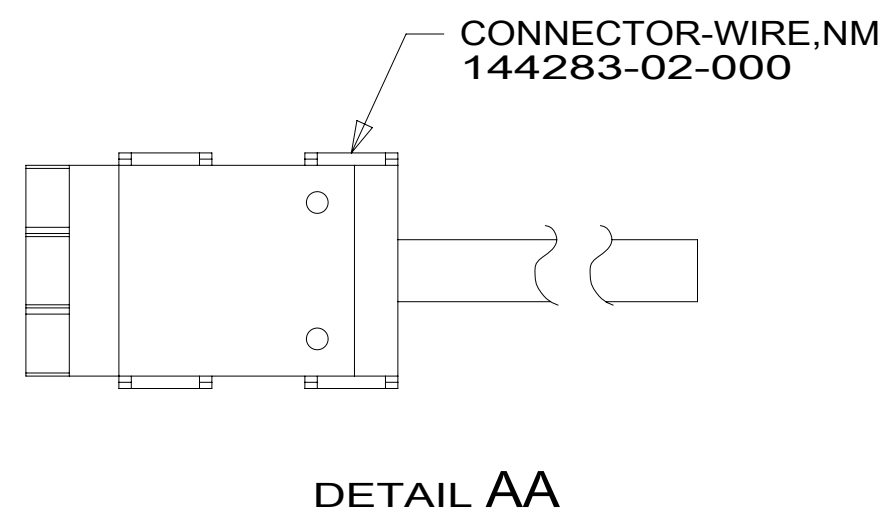
- 401 INVERTER-DC/AC, 1000 WATT
- 12D ELECTRICAL SYSTEM 30 AMP
- 265 CODES/STANDARDS-CSA/CMVSS
- 1B1 CODES/STANDARDS USA

FOR ELECTRICAL
TORQUE
SPECIFICATIONS
SEE DWG NO.
128783-01-000

FOR
ELECTRICAL
CALLOUTS
SEE DWG NO.
121339-01-000

1B1 265 12D 401

DESCRIPTION: WIRING INSTL-BODY,110V		
SHEET: 4 OF 6	ITEM/PART NO: 000120973 / 32288801000	REV



RED	1B1	136135-07-034	
	265	136136-07-034	
YEL	1B1	136131-05-018	2
	265	136134-05-018	2
BLK	1B1	136135-06-018	
	265	136136-06-018	
BRN	1B1	136131-03-013	2
	265	136134-03-013	2
BRN-2	1B1	136131-19-045	2
	265	136134-19-045	2
BLU	1B1	136131-02-115	
	265	136134-02-115	
MAIN	1B1	136137-01-074	
	265	136138-01-074	
BLK-2	1B1	136135-22-006	
	265	136136-22-006	
WHT	1B1	136135-09-025	
	265	136136-09-025	
THROW IN WIRE #1	1B1	136131-02-028	
	265	136134-02-028	

2 FOR CONNECTOR INSTALLATION, SEE DETAIL AA.
 1. ALL GROUND WIRES TO BE COVERED WITH TUBING 8041-02-000.

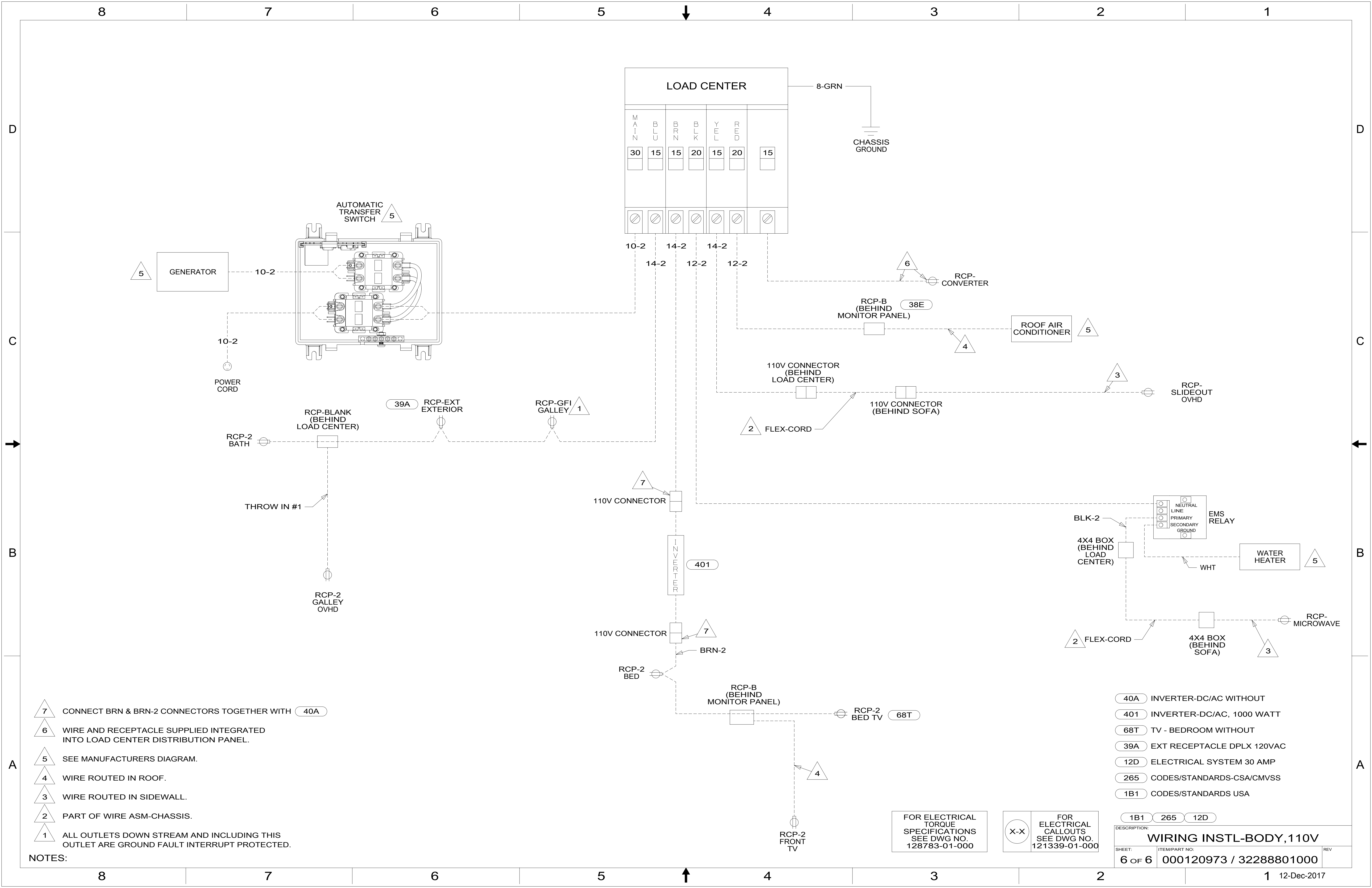
NOTES:

FOR ELECTRICAL TORQUE SPECIFICATIONS SEE DWG NO. 128783-01-000

FOR ELECTRICAL CALLOUTS SEE DWG NO. 121339-01-000

- 12D ELECTRICAL SYSTEM 30 AMP
- 265 CODES/STANDARDS-CSA/CMVSS
- 1B1 CODES/STANDARDS USA

1B1	265	12D
DESCRIPTION: WIRING INSTL-BODY, 110V		
SHEET: 5 OF 6	ITEM/PART NO: 000120973 / 32288801000	REV



- 7 CONNECT BRN & BRN-2 CONNECTORS TOGETHER WITH 40A
- 6 WIRE AND RECEPTACLE SUPPLIED INTEGRATED INTO LOAD CENTER DISTRIBUTION PANEL.
- 5 SEE MANUFACTURERS DIAGRAM.
- 4 WIRE ROUTED IN ROOF.
- 3 WIRE ROUTED IN SIDEWALL.
- 2 PART OF WIRE ASM-CHASSIS.
- 1 ALL OUTLETS DOWN STREAM AND INCLUDING THIS OUTLET ARE GROUND FAULT INTERRUPT PROTECTED.

- 40A INVERTER-DC/AC WITHOUT
- 401 INVERTER-DC/AC, 1000 WATT
- 68T TV - BEDROOM WITHOUT
- 39A EXT RECEPTACLE DPLX 120VAC
- 12D ELECTRICAL SYSTEM 30 AMP
- 265 CODES/STANDARDS-CSA/CMVSS
- 1B1 CODES/STANDARDS USA

FOR ELECTRICAL TORQUE SPECIFICATIONS SEE DWG NO. 128783-01-000

FOR ELECTRICAL CALLOUTS SEE DWG NO. 121339-01-000

DESCRIPTION:		
WIRING INSTL-BODY, 110V		
SHEET:	ITEM/PART NO.:	REV:
6 OF 6	000120973 / 32288801000	