

8 7 6 5 4 3 2 1

D
C
B
A

D
C
B
A

CABLE ASM-CHASSIS BATTERY (RED)	141415-37-018	3
CABLE ASM-COACH BATTERY (YEL)	141415-52-019	
CABLE ASM-COACH BATTERY GND (BLK)	133567-12-007	
CABLE ASM-GENERATOR (GRN)	141415-42-039	3
CABLE ASM-GENERATOR GND (BLK)	133566-12-005	3
CABLE ASM-FRAME GND	133566-12-003	
CABLE ASM-INVERTER FUSE (ORG)	141415-62-005	401
CABLE ASM-INVERTER (ORG)	141415-62-020	401
CABLE ASM-INVERTER GND (BLK)	133566-12-020	401
CABLE ASM-INVERTER CASE GND (GRN)	136145-05-016	401

- 401 INVERTER-DC/AC, 1000 WATT
- 265 CODES/STANDARDS-CSA/CMVSS
- 1B1 CODES/STANDARDS USA

1B1 265



DSNR:		ALL DIMENSIONS ARE IN MILLIMETERS	
DIFFR:		MATERIAL:	
UNSPECIFIED TOLERANCES:			
WHOLE DIM (X)	: 3		
ONE-PLACE (X.X)	: 1.5		
TWO-PLACE (X.XX)	: 0.50		
ANGLE	: 1°		
REFER TO ES0018 FOR FASTENER TIGHTENING GUIDELINES	WEIGHT: (LBS)	FIRST USED:	18 423A

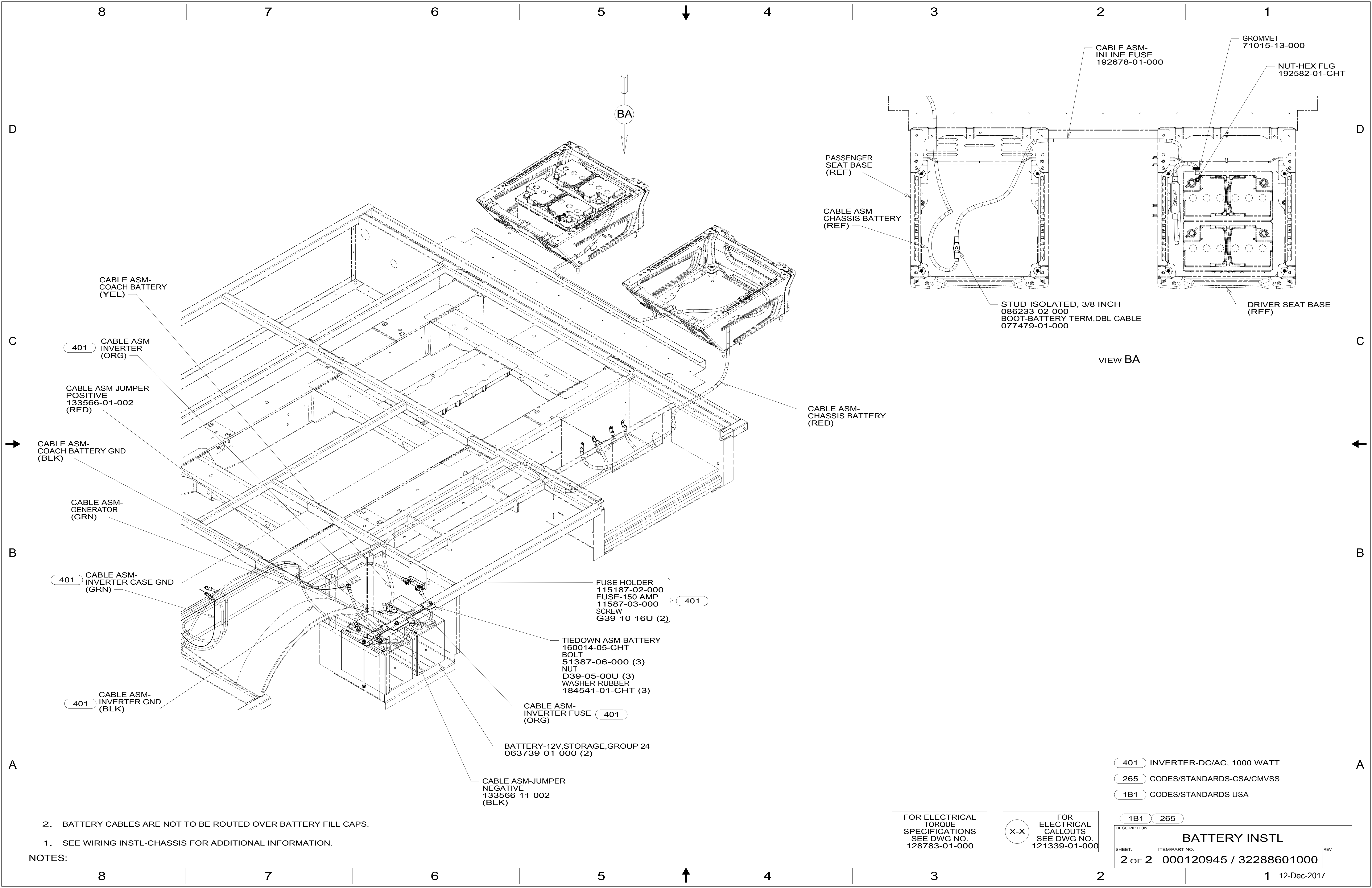
DESCRIPTION: BATTERY INSTL		
SHEET: 1 OF 2	ITEM/PART NO: 000120945 / 32288601000	REV:
REF:		1 12-Dec-2017

FOR ELECTRICAL TORQUE SPECIFICATIONS SEE DWG NO. 128783-01-000

FOR ELECTRICAL CALLOUTS SEE DWG NO. 121339-01-000

- 3 ROUTING OF CABLE SHOWN IN WIRING INSTL-CHASSIS ONLY.
2. BATTERY CABLES ARE NOT TO BE ROUTED OVER BATTERY FILL CAPS.
 1. SEE WIRING INSTL-CHASSIS FOR ADDITIONAL INFORMATION.
- NOTES:

8 7 6 5 4 3 2 1



8 7 6 5 4 3 2 1

D

D

C

C

B

B

A

A

BA

VIEW BA

CABLE ASM-COACH BATTERY (YEL)

401 CABLE ASM-INVERTER (ORG)

CABLE ASM-JUMPER POSITIVE 133566-01-002 (RED)

CABLE ASM-COACH BATTERY GND (BLK)

CABLE ASM-GENERATOR (GRN)

401 CABLE ASM-INVERTER CASE GND (GRN)

401 CABLE ASM-INVERTER GND (BLK)

FUSE HOLDER 115187-02-000
FUSE-150 AMP 11587-03-000
SCREW G39-10-16U (2)

401

TIEDOWN ASM-BATTERY 160014-05-CHT
BOLT 51387-06-000 (3)
NUT D39-05-00U (3)
WASHER-RUBBER 184541-01-CHT (3)

CABLE ASM-INVERTER FUSE 401 (ORG)

BATTERY-12V, STORAGE, GROUP 24 063739-01-000 (2)

CABLE ASM-JUMPER NEGATIVE 133566-11-002 (BLK)

PASSENGER SEAT BASE (REF)

CABLE ASM-CHASSIS BATTERY (REF)

CABLE ASM-CHASSIS BATTERY (RED)

CABLE ASM-INLINE FUSE 192678-01-000

GROMMET 71015-13-000

NUT-HEX FLG 192582-01-CHT

STUD-ISOLATED, 3/8 INCH 086233-02-000
BOOT-BATTERY TERM, DBL. CABLE 077479-01-000

DRIVER SEAT BASE (REF)

2. BATTERY CABLES ARE NOT TO BE ROUTED OVER BATTERY FILL CAPS.

1. SEE WIRING INSTL-CHASSIS FOR ADDITIONAL INFORMATION.

NOTES:

FOR ELECTRICAL TORQUE SPECIFICATIONS SEE DWG NO. 128783-01-000

FOR ELECTRICAL CALLOUTS SEE DWG NO. 121339-01-000

- 401 INVERTER-DC/AC, 1000 WATT
- 265 CODES/STANDARDS-CSA/CMVSS
- 1B1 CODES/STANDARDS USA

DESCRIPTION:		1B1 265	
BATTERY INSTL			
SHEET:	ITEM/PART NO.:	REV	
2 OF 2	000120945 / 32288601000		

8 7 6 5 4 3 2 1 12-Dec-2017