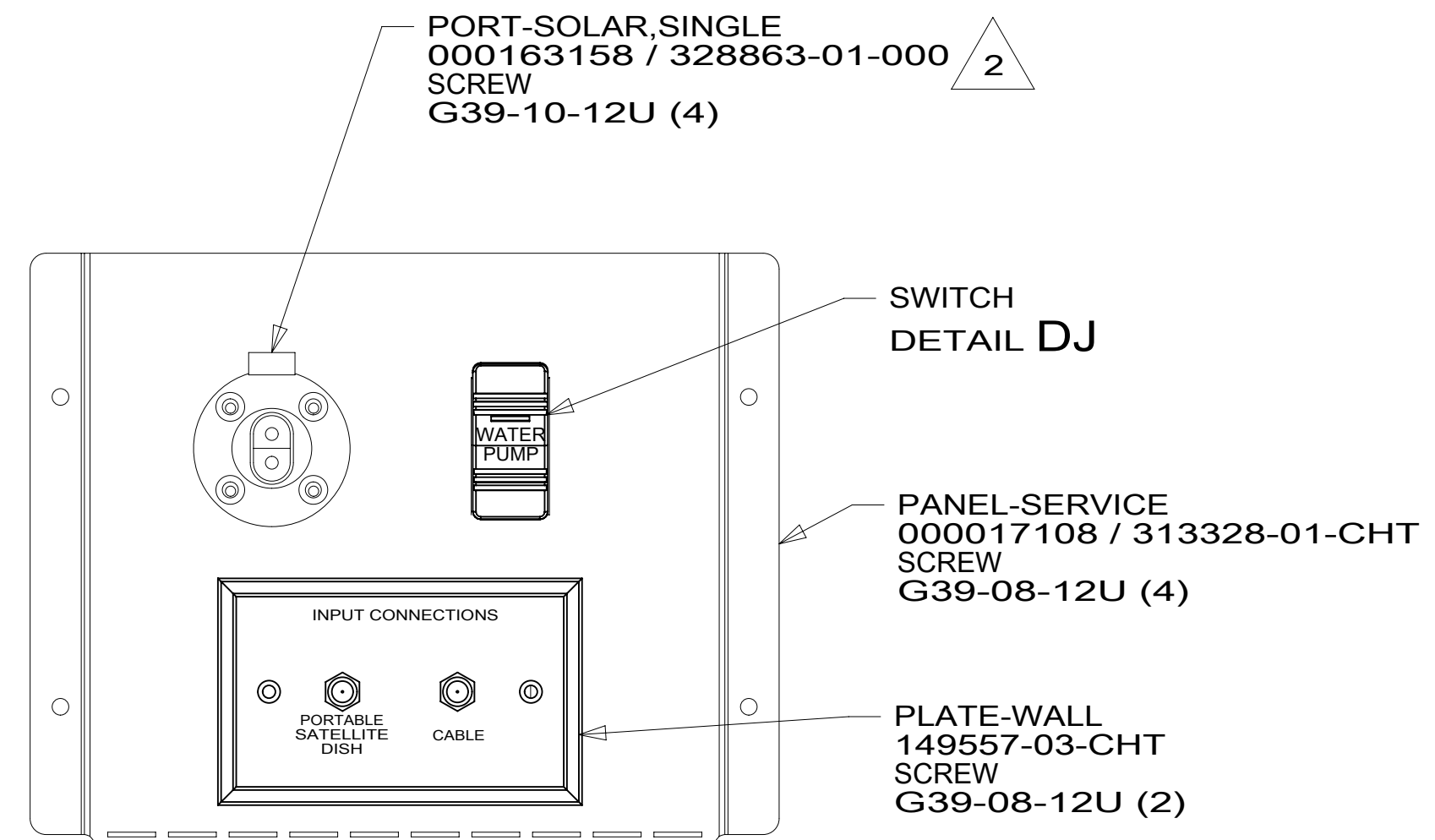


8 7 6 5 4 3 2 1



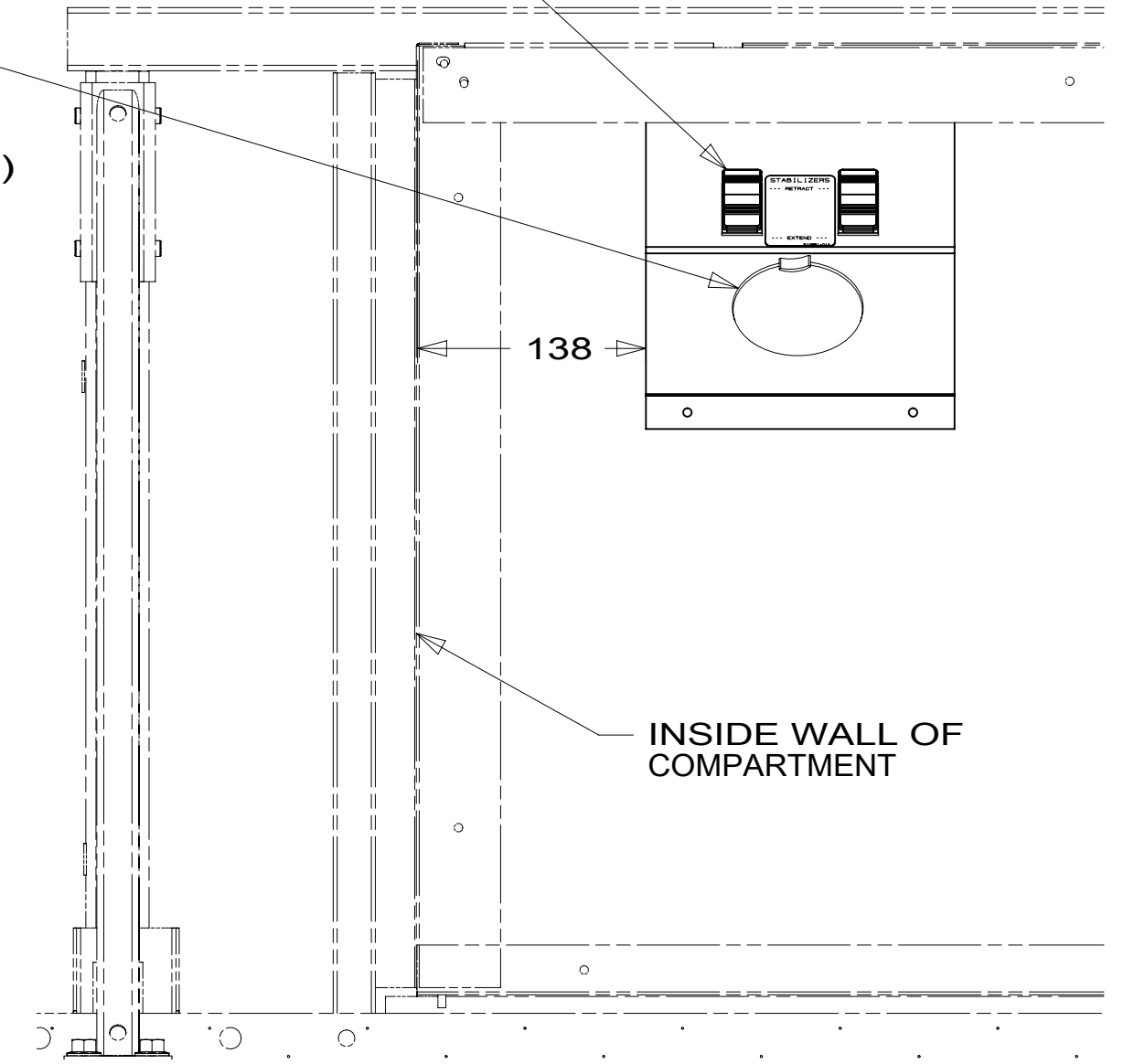
VIEW AA

HARNESS-SLIDEOUT MOTOR
191660-01-000

HARNESS-SLIDEOUT MOTOR
191660-01-000

PANEL-SWITCH
000028367 / 316237-01-CHT
SWITCH-ROCKER
108357-06-000 (2)
ACTUATOR
108356-01-CHT (2)
LABEL-STABILIZER
000007799 / 310651-01-CHT

64A
PSSLED-2
SCREW
G39-08-12U (2)



VIEW AB

WIRE ASM-TANK,
AUX HOLDING
151316-04-000

GROMMET
023942-01-000

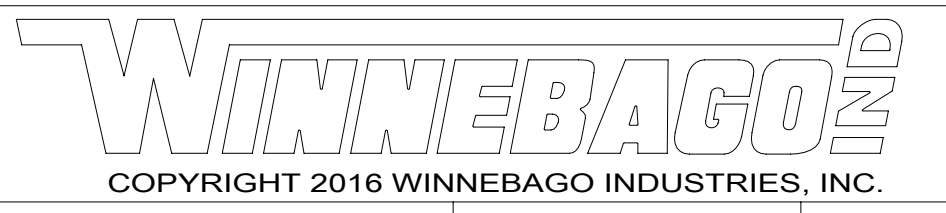
23R 23T
WIRE ASM-
HEATER, TANKS
191919-01-000

WIRE ASM-TANK,
MAIN HOLDING
151317-04-000

GROMMET
114208-06-000

- 60T JACKS-STABILIZING,ELECT W/O
- 64A JACKS-STABILIZING, ELECTRIC
- 23T DRAINAGE SYSTEM-HEATED
- 23R DRAINAGE SYSTEM/HEAT-PREWIRE
- 265 CODES/STANDARDS-CSA/CMVSS
- 1B1 CODES/STANDARDS USA

1B1 265



DSNR:	ALL DIMENSIONS ARE IN MILLIMETERS	
DFFR:	MATERIAL:	
UNSPECIFIED TOLERANCES:		
WHOLE DIM (X) :	3	
ONE-PLACE (X.X) :	1.5	
TWO-PLACE (X.XX) :	0.50	
ANGLE :	1°	
REFER TO ES0018 FOR FASTENER TIGHTENING GUIDELINES	WEIGHT: (LBS)	FIRST USED:
		18 423A

DESCRIPTION:
WIRING INSTL-BODY, 12V

SHEET:	ITEM/PART NO.:	REV:
1 OF 6	000120921 / 32287801000	

FOR ELECTRICAL TORQUE SPECIFICATIONS SEE DWG NO. 128783-01-000

FOR ELECTRICAL CALLOUTS SEE DWG NO. 121339-01-000

- 4 WITH 60AMP TO BE MOUNTED ON UNDERSIDE OF FLOOR.
- 3 WIRE PASSES THROUGH FLOOR IN THIS AREA.
- 2 SPLICE YELLOW TO RED AND WHITE TO BLACK.

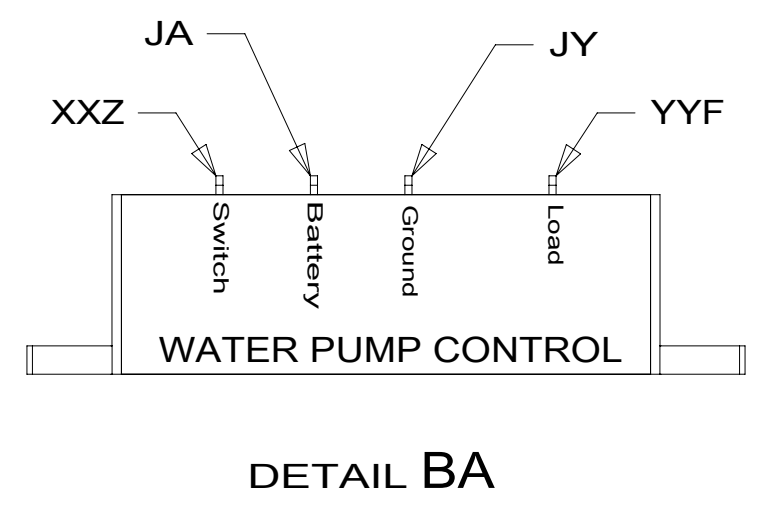
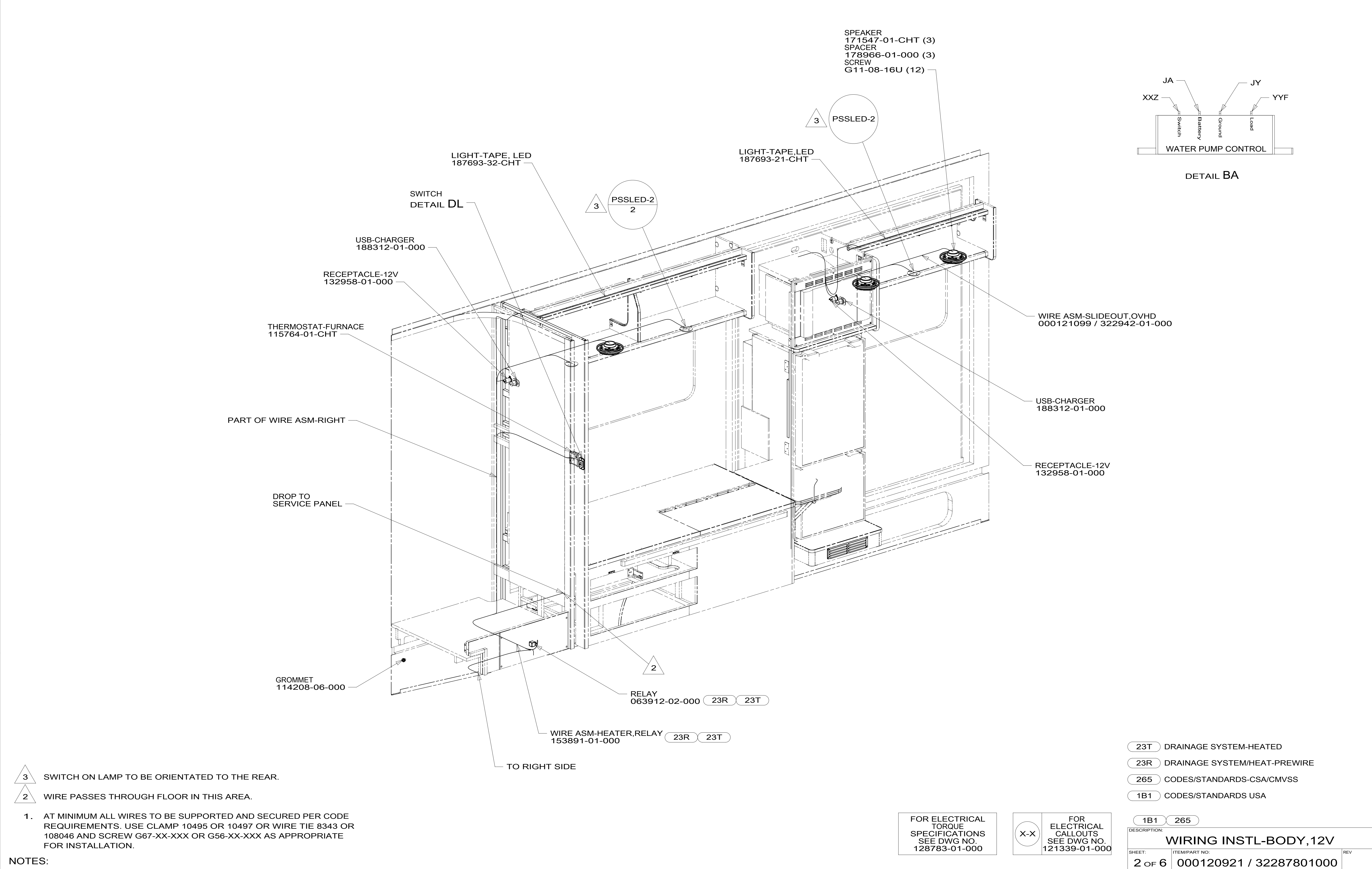
1. AT MINIMUM ALL WIRES TO BE SUPPORTED AND SECURED PER CODE REQUIREMENTS. USE CLAMP 10495 OR 10497 OR WIRE TIE 8343 OR 108046 AND SCREW G67-XX-XXX OR G56-XX-XXX AS APPROPRIATE FOR INSTALLATION.

NOTES:

8 7 6 5 4 3 2 1

8 7 6 5 4 3 2 1

D
C
B
A



- 3 SWITCH ON LAMP TO BE ORIENTATED TO THE REAR.
- 2 WIRE PASSES THROUGH FLOOR IN THIS AREA.

1. AT MINIMUM ALL WIRES TO BE SUPPORTED AND SECURED PER CODE REQUIREMENTS. USE CLAMP 10495 OR 10497 OR WIRE TIE 8343 OR 108046 AND SCREW G67-XX-XXX OR G56-XX-XXX AS APPROPRIATE FOR INSTALLATION.

NOTES:

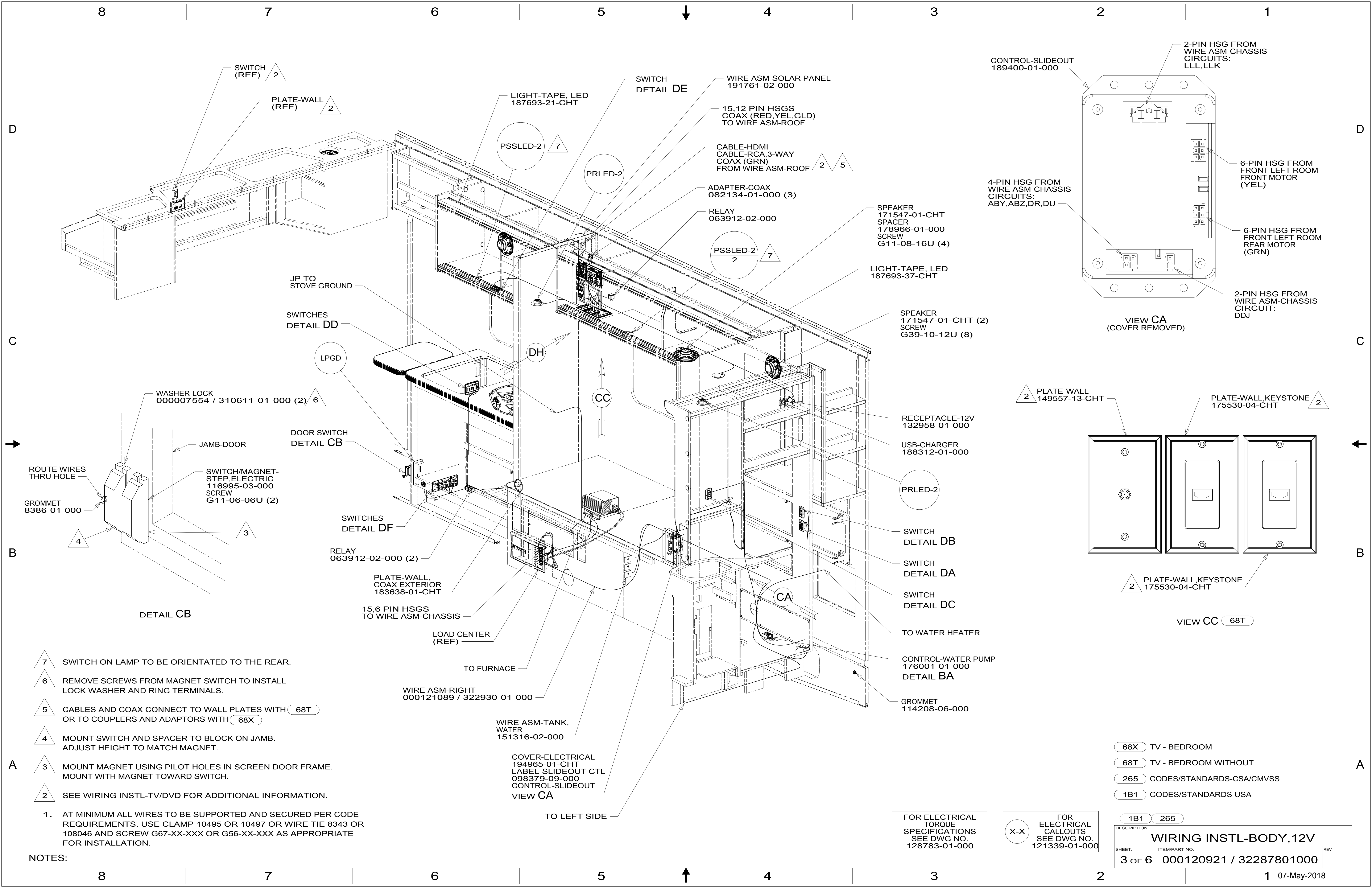
- 23T DRAINAGE SYSTEM-HEATED
- 23R DRAINAGE SYSTEM/HEAT-PREWIRE
- 265 CODES/STANDARDS-CSA/CMVSS
- 1B1 CODES/STANDARDS USA

FOR ELECTRICAL TORQUE SPECIFICATIONS SEE DWG NO. 128783-01-000

FOR ELECTRICAL CALLOUTS SEE DWG NO. 121339-01-000

DESCRIPTION: WIRING INSTL-BODY, 12V		
SHEET: 2 OF 6	ITEM/PART NO.: 000120921 / 32287801000	REV

8 7 6 5 4 3 2 1 07-May-2018



- 7 SWITCH ON LAMP TO BE ORIENTATED TO THE REAR.
- 6 REMOVE SCREWS FROM MAGNET SWITCH TO INSTALL LOCK WASHER AND RING TERMINALS.
- 5 CABLES AND COAX CONNECT TO WALL PLATES WITH (68T) OR TO COUPLERS AND ADAPTORS WITH (68X)
- 4 MOUNT SWITCH AND SPACER TO BLOCK ON JAMB. ADJUST HEIGHT TO MATCH MAGNET.
- 3 MOUNT MAGNET USING PILOT HOLES IN SCREEN DOOR FRAME. MOUNT WITH MAGNET TOWARD SWITCH.
- 2 SEE WIRING INSTL-TV/DVD FOR ADDITIONAL INFORMATION.

1. AT MINIMUM ALL WIRES TO BE SUPPORTED AND SECURED PER CODE REQUIREMENTS. USE CLAMP 10495 OR 10497 OR WIRE TIE 8343 OR 108046 AND SCREW G67-XX-XXX OR G56-XX-XXX AS APPROPRIATE FOR INSTALLATION.

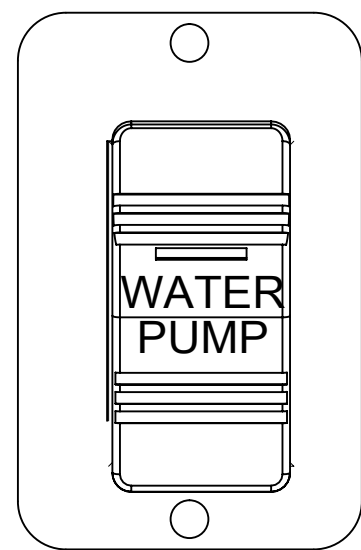
NOTES:

FOR ELECTRICAL TORQUE SPECIFICATIONS SEE DWG NO. 128783-01-000

FOR ELECTRICAL CALLOUTS SEE DWG NO. 121339-01-000

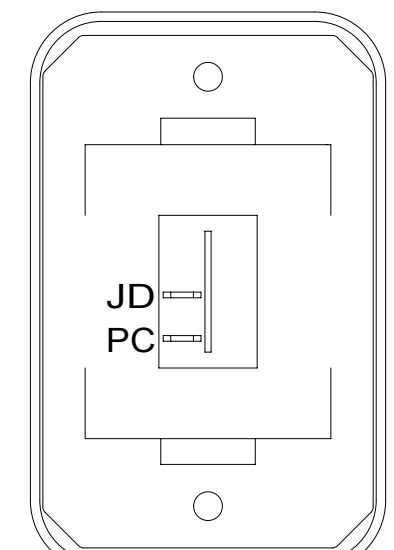
- (68X) TV - BEDROOM
- (68T) TV - BEDROOM WITHOUT
- (265) CODES/STANDARDS-CSA/CMVSS
- (1B1) CODES/STANDARDS USA

DESCRIPTION:		WIRING INSTL-BODY, 12V	
SHEET:	ITEM/PART NO.:	REV:	
3 OF 6	000120921 / 32287801000		



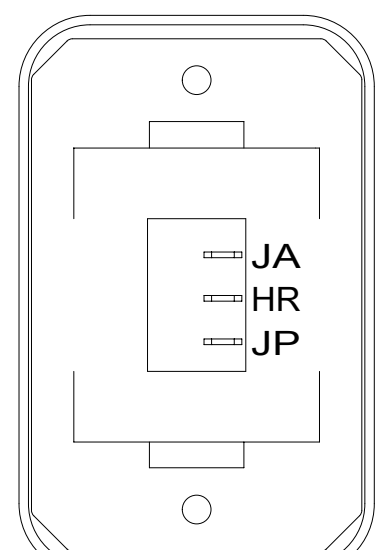
SWITCH-ROCKER
108357-21-000
ACTUATOR-SWITCH
108356-23-CHT
PLATE-SWITCH
144363-02-CHT
SCREW
G11-06-10U (2)

DETAIL DA

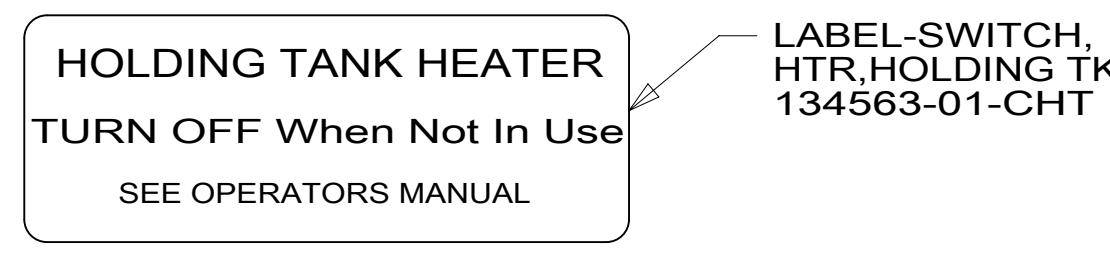


SWITCH-ROCKER
135740-01-CHT
SWITCH-BASE
135741-01-CHT
SWITCH-BEZEL
135742-01-CHT
SCREW
G11-08-08U (2)

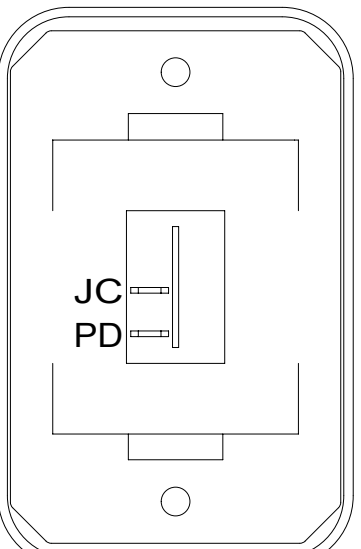
DETAIL DE



SWITCH-ROCKER
135740-06-CHT
SWITCH-BASE
135741-01-CHT
SWITCH-BEZEL
135742-01-CHT
SCREW
G11-08-08U (2)



DETAIL DG 23T 23R



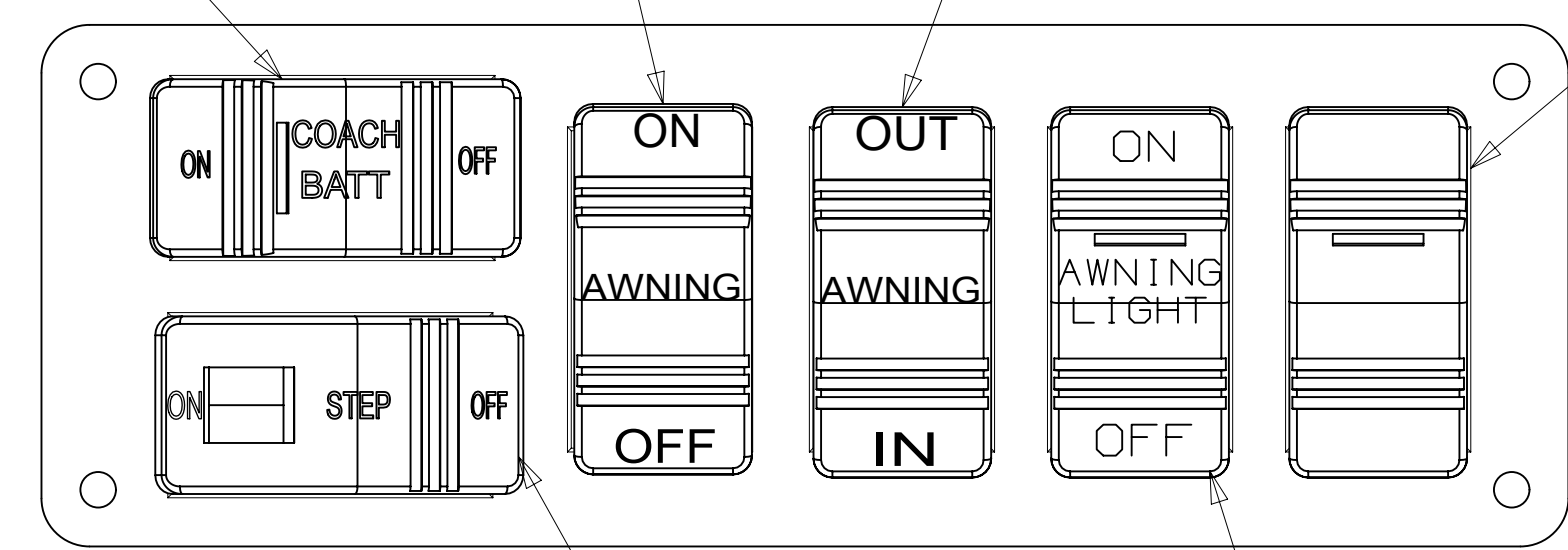
SWITCH-ROCKER
135740-01-CHT
SWITCH-BASE
135741-01-CHT
SWITCH-BEZEL
135742-01-CHT
SCREW
G11-08-08U (2)

DETAIL DB

SWITCH-BATTERY
108357-18-000
ACTUATOR-SWITCH
108356-19-CHT
CIRCUITS LH,LG,
LJ-1,JC,NC
WIRE ASM-THERMISTOR
186796-01-000

SWITCH-ROCKER
108357-01-000
ACTUATOR-SWITCH
108356-22-CHT
CIRCUITS
FFD,FFT

SWITCH-ROCKER
108357-06-000
ACTUATOR-SWITCH
108356-12-CHT
CIRCUITS FFN,FFP,FFR

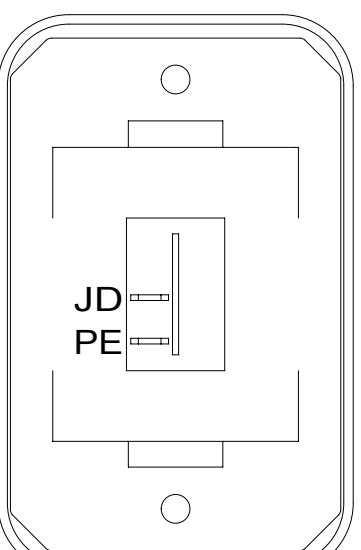


SWITCH-ROCKER
108357-14-000
ACTUATOR-SWITCH
108356-03-000
CIRCUITS AES,AET,NC

PLATE-SWITCH
00022055 / 314395-01-CHT
SCREW
G11-06-10U (4)

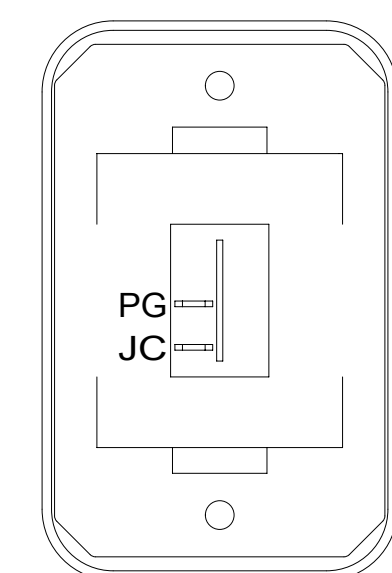
SWITCH-ROCKER
108357-19-000
CIRCUITS ER,ES

SWITCH-ROCKER
108357-14-000
ACTUATOR-SWITCH
108356-28-CHT
CIRCUITS RS,ZZK,NC



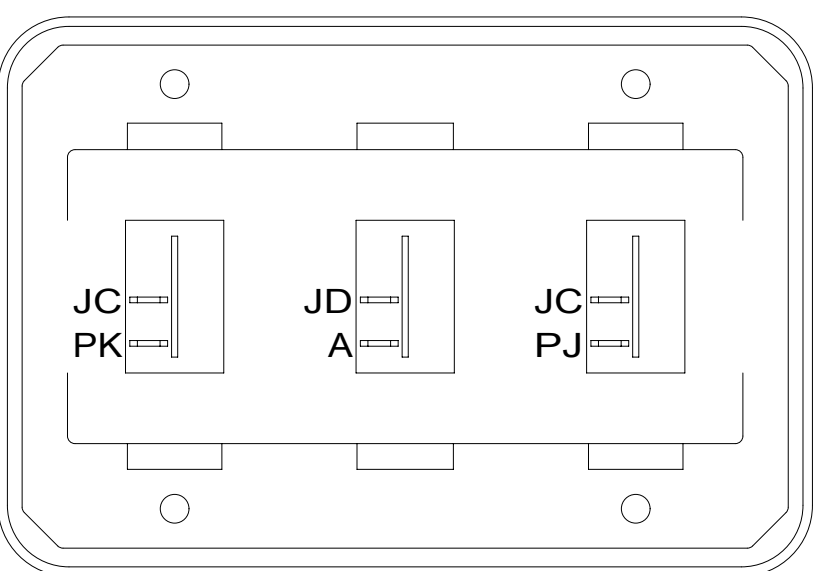
SWITCH-ROCKER
135740-01-CHT
SWITCH-BASE
135741-01-CHT
SWITCH-BEZEL
135742-01-CHT
SCREW
G11-08-08U (2)

DETAIL DC



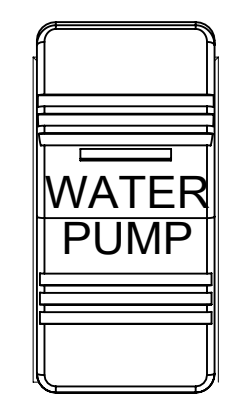
SWITCH-ROCKER
135740-01-CHT
SWITCH-BASE
135741-01-CHT
SWITCH-BEZEL
135742-01-CHT
SCREW
G11-08-08U (2)

DETAIL DL



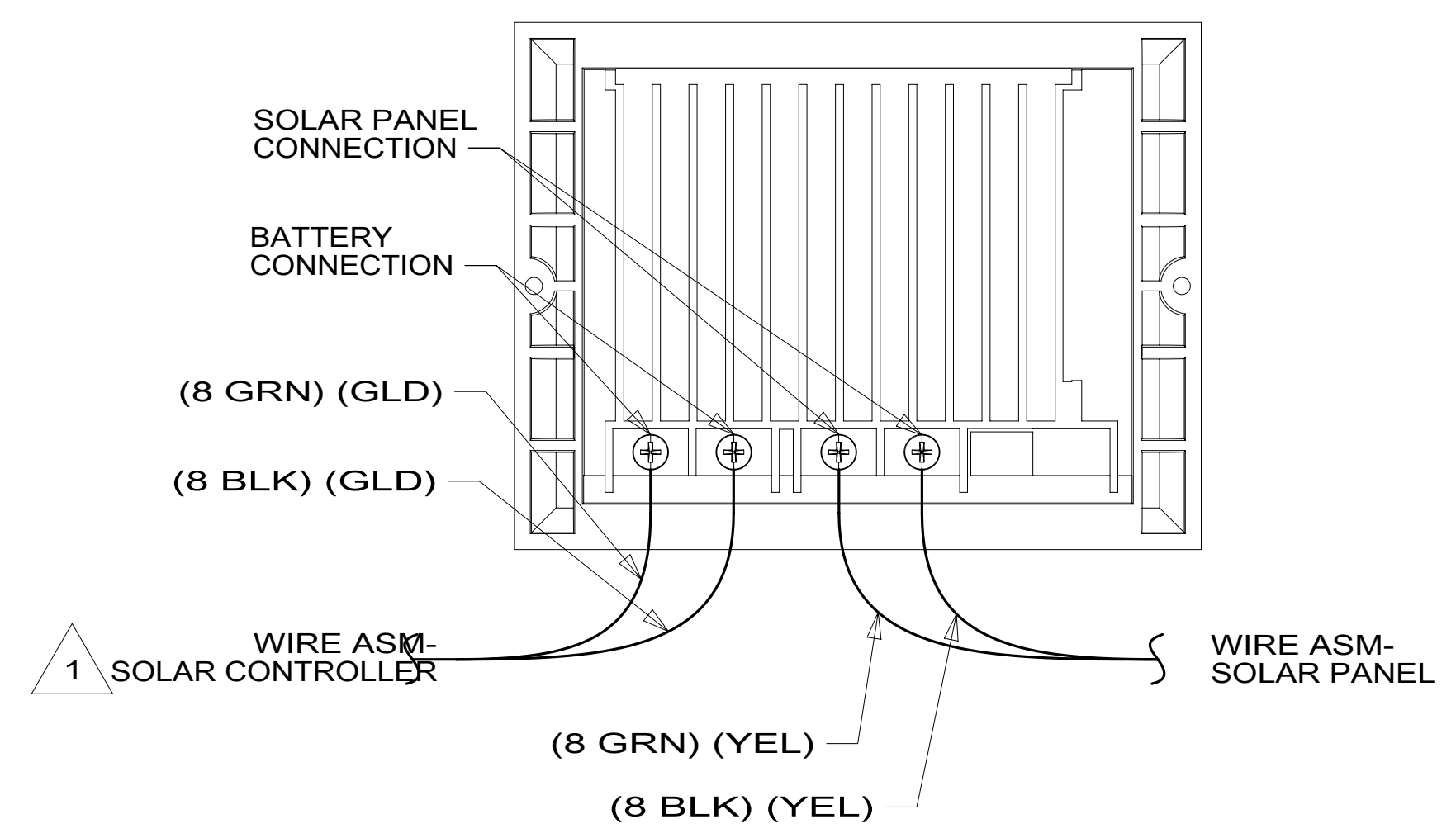
SWITCH-ROCKER
135740-01-CHT (3)
SWITCH-BASE
135741-03-CHT
SWITCH-BEZEL
135742-03-CHT
SCREW
G11-08-08U (4)

DETAIL DD



SWITCH-ROCKER
108357-21-000
ACTUATOR-SWITCH
108356-23-CHT

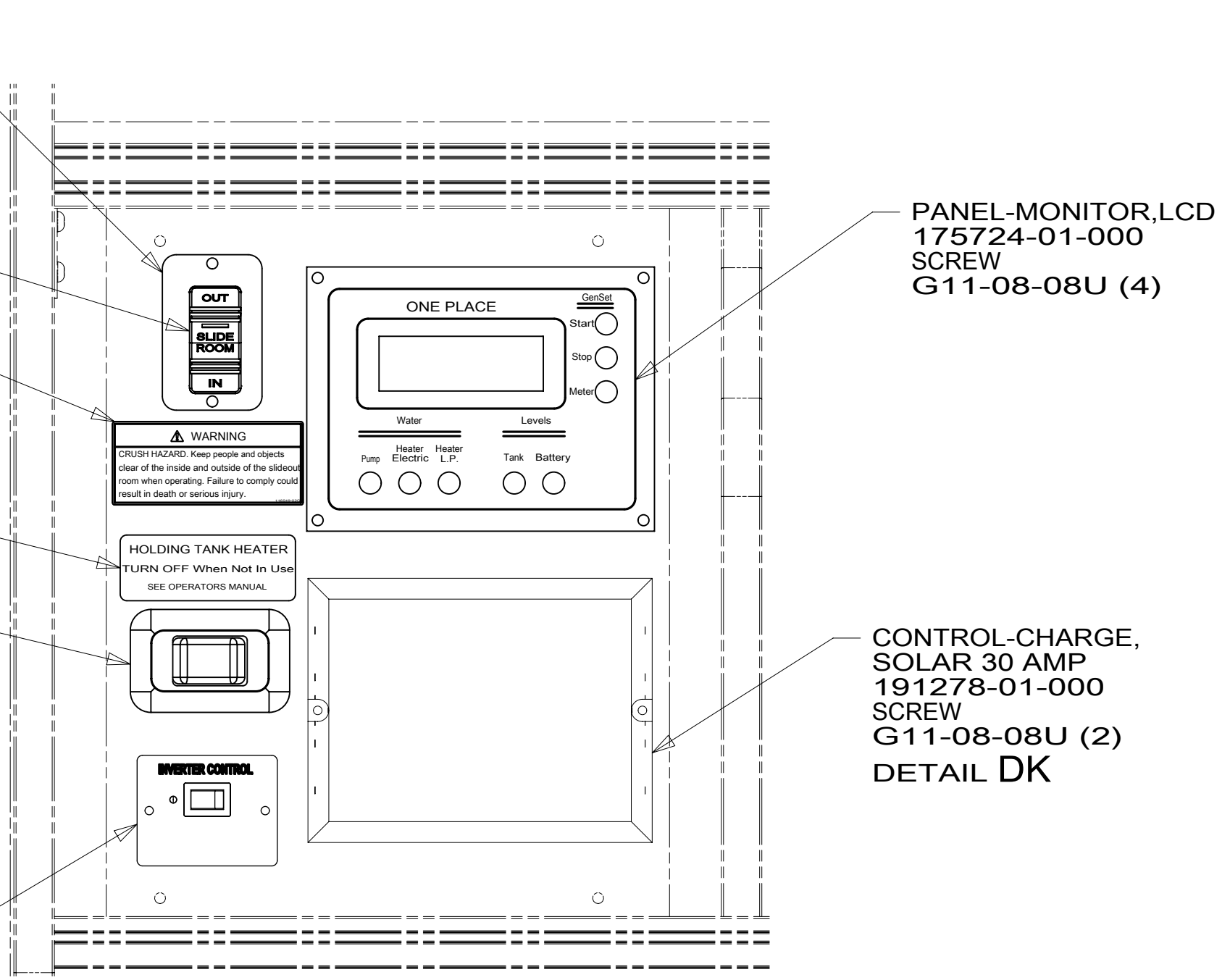
DETAIL DJ



DETAIL DK

FOR ELECTRICAL
TORQUE
SPECIFICATIONS
SEE DWG NO.
128783-01-000

FOR
ELECTRICAL
CALLOUTS
SEE DWG NO.
121339-01-000



VIEW DH

PANEL-MONITOR,LCD
175724-01-000
SCREW
G11-08-08U (4)

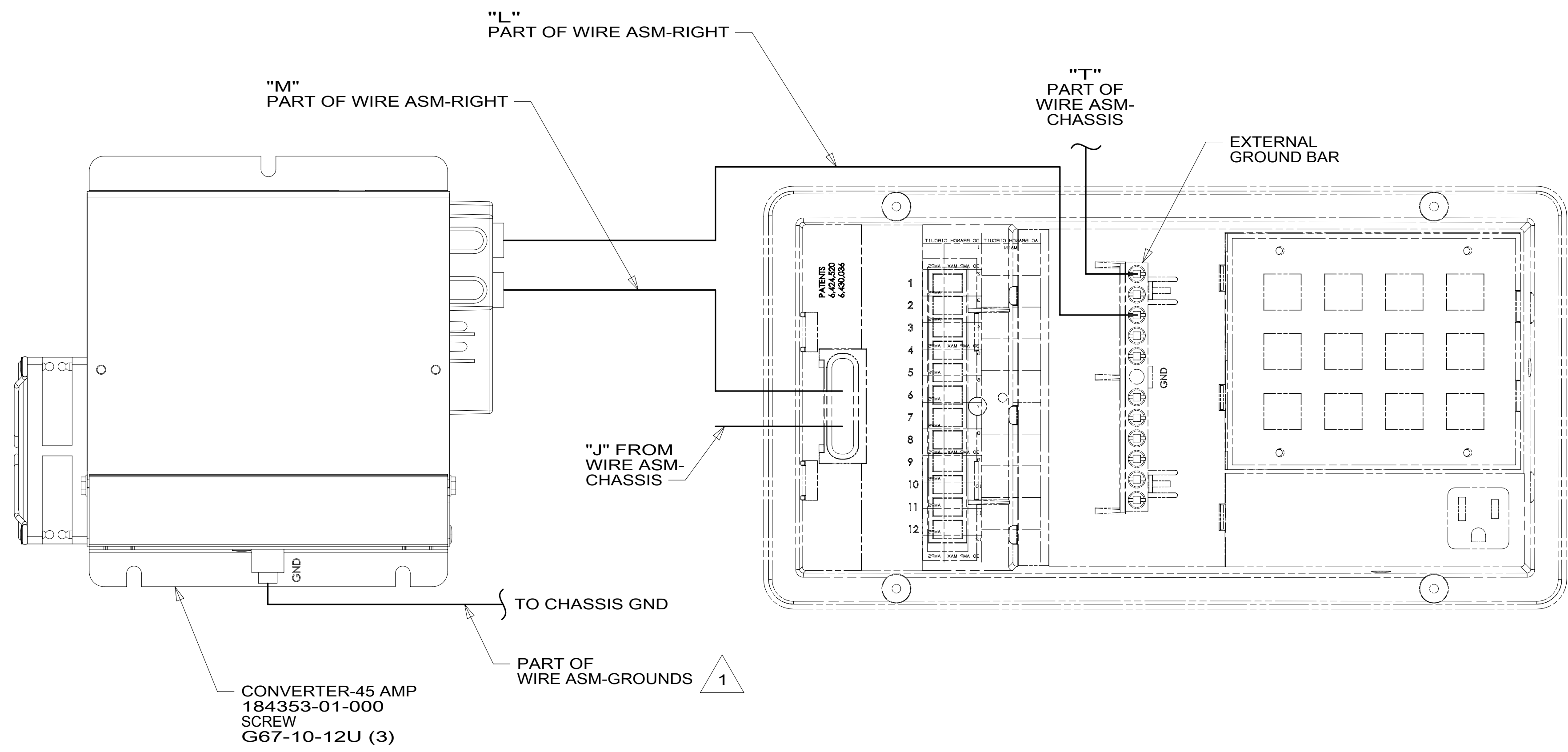
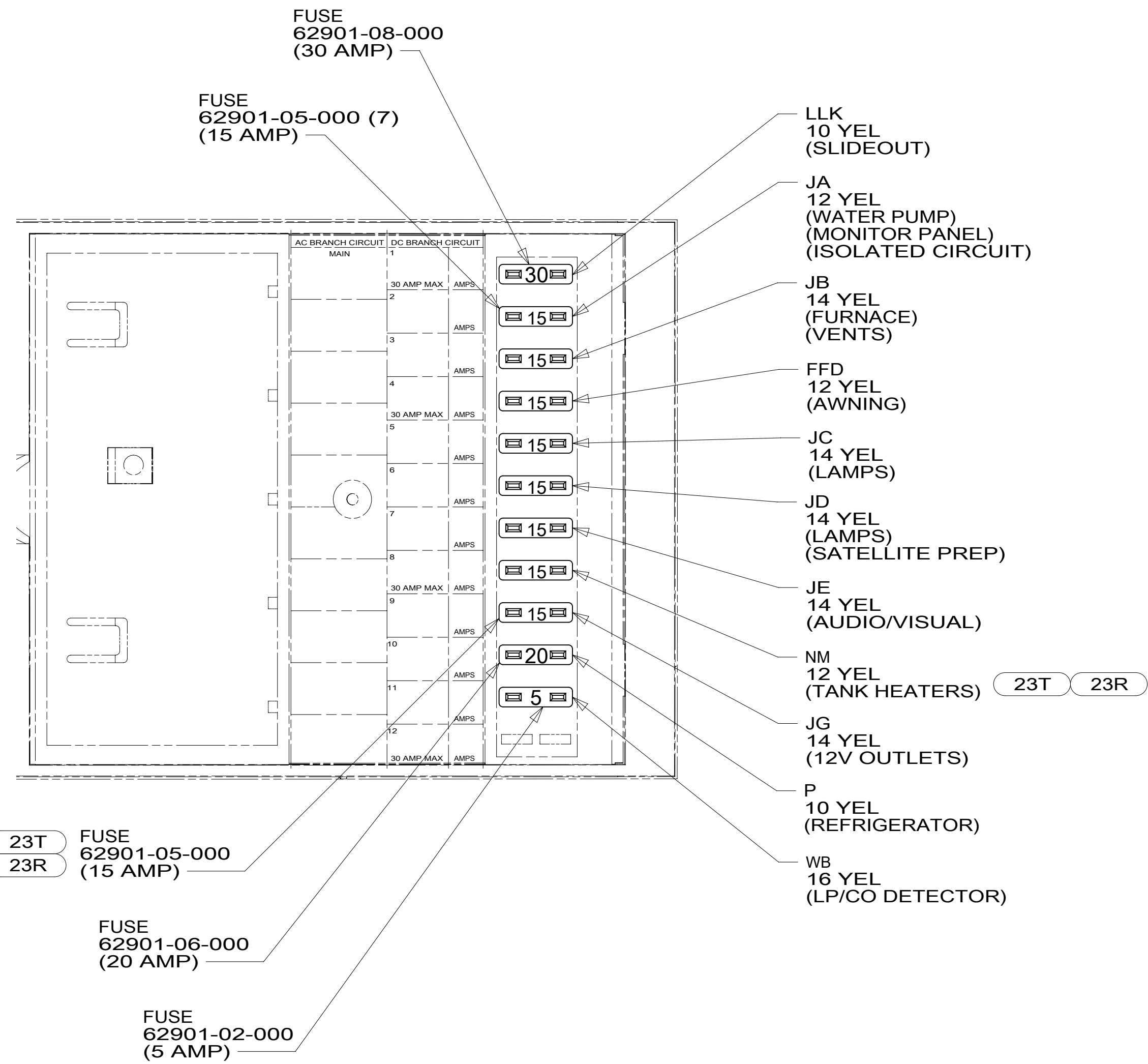
CONTROL-CHARGE,
SOLAR 30 AMP
191278-01-000
SCREW
G11-08-08U (2)
DETAIL DK

NOTES:
1 SEE WIRING INSTL-CHASSIS FOR ADDITIONAL INFORMATION.

- 401 INVERTER-DC/AC, 1000 WATT
- 23R DRAINAGE SYSTEM/HEAT-PREWIRED
- 23T DRAINAGE SYSTEM-HEATED
- 265 CODES/STANDARDS-CSA/CMVSS
- 1B1 CODES/STANDARDS USA

DESCRIPTION: WIRING INSTL-BODY, 12V	
SHEET: 4 OF 6	ITEM/PART NO: 000120921 / 32287801000
REV 07-May-2018	

8 7 6 5 4 3 2 1



D
C
B
A

D
C
B
A

1 SEE WIRING INSTL-CHASSIS FOR ADDITIONAL INFORMATION.
NOTES:

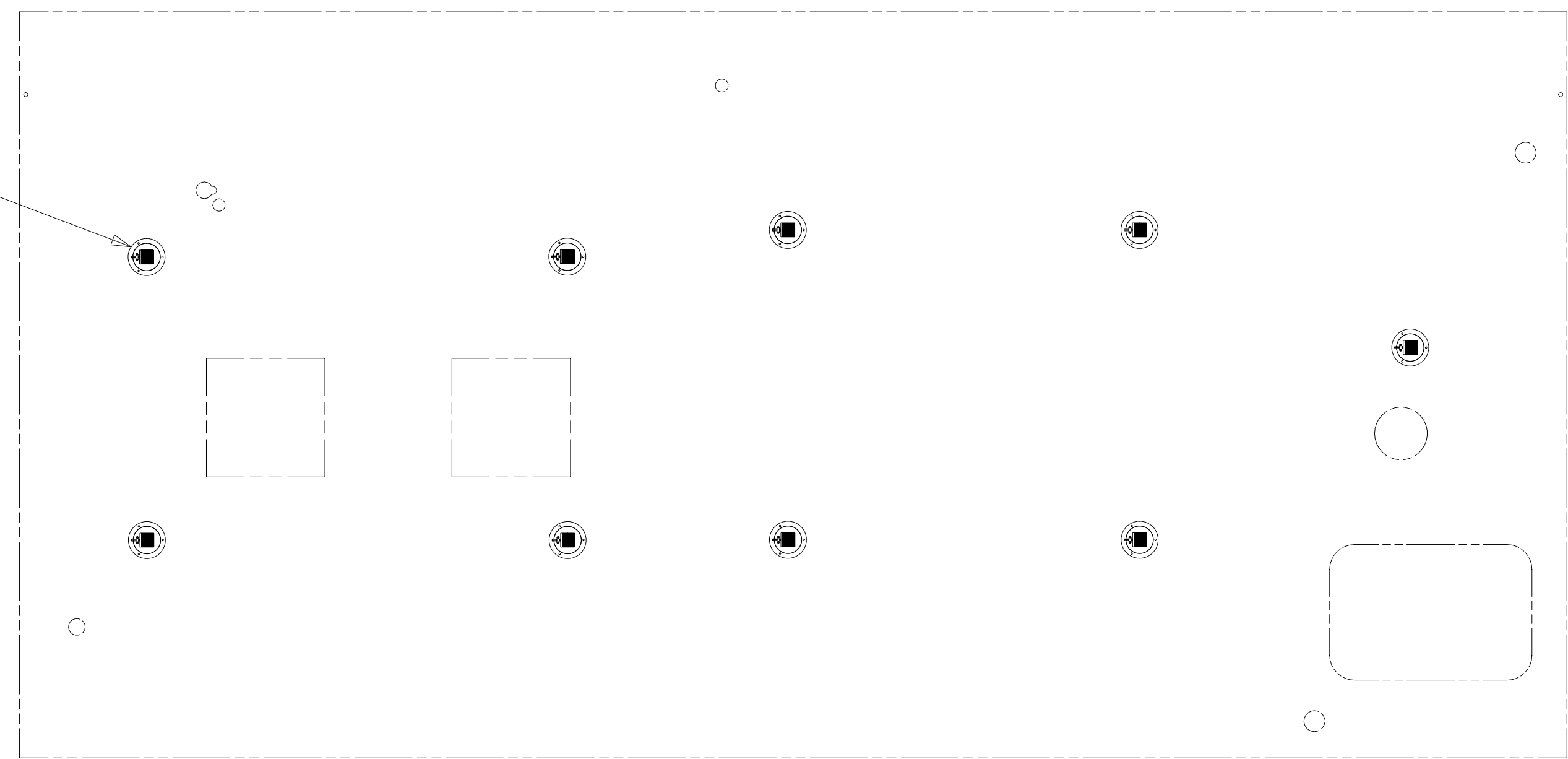
FOR ELECTRICAL TORQUE SPECIFICATIONS SEE DWG NO. 128783-01-000

X-X FOR ELECTRICAL CALLOUTS SEE DWG NO. 121339-01-000

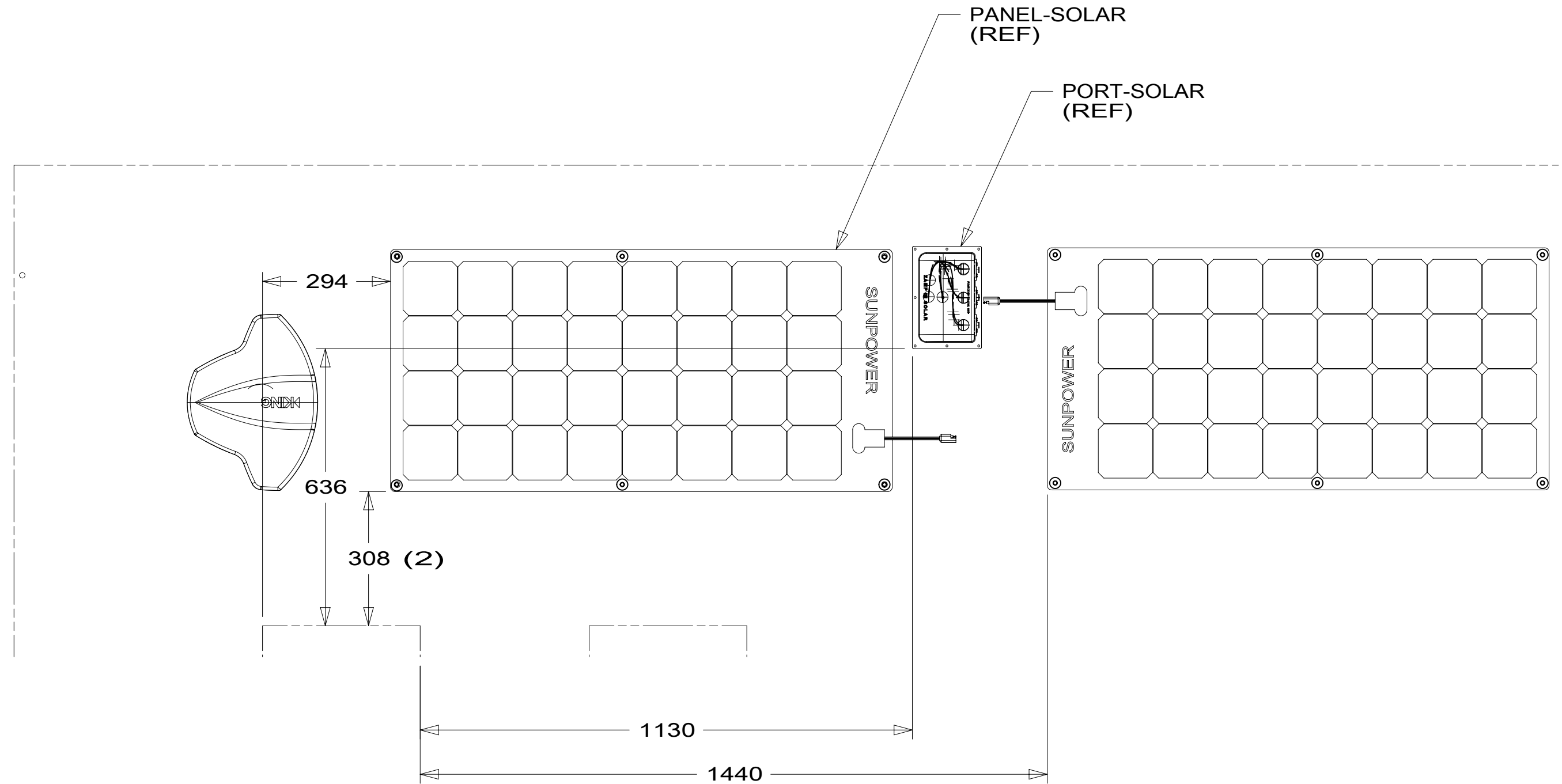
- 23R DRAINAGE SYSTEM/HEAT-PREWIRE
- 23T DRAINAGE SYSTEM-HEATED
- 265 CODES/STANDARDS-CSA/CMVSS
- 1B1 CODES/STANDARDS USA

DESCRIPTION: WIRING INSTL-BODY, 12V	
SHEET: 5 OF 6	ITEM/PART NO.: 000120921 / 32287801000
REV 1 07-May-2018	

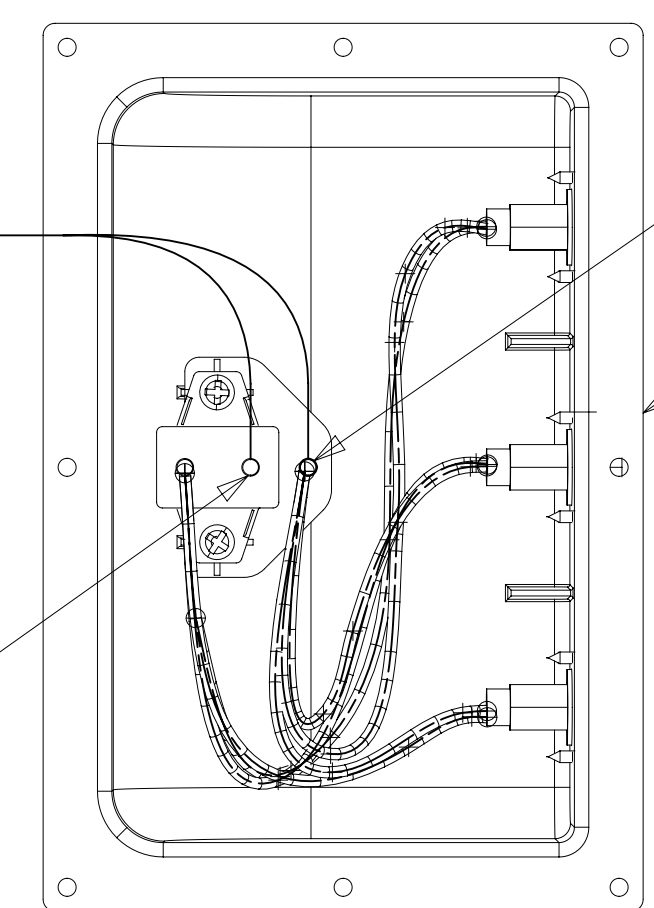
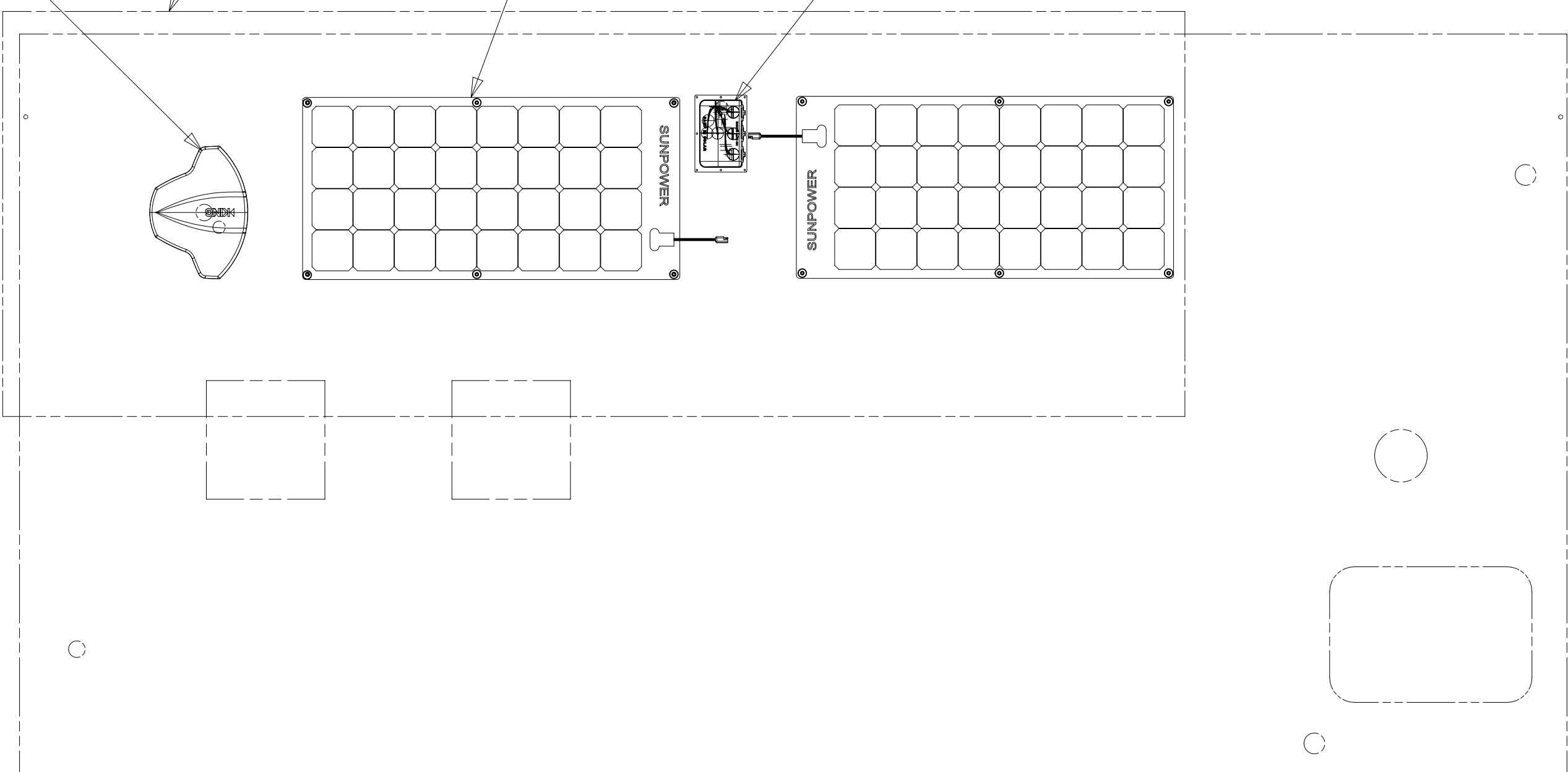
8 7 6 5 4 3 2 1



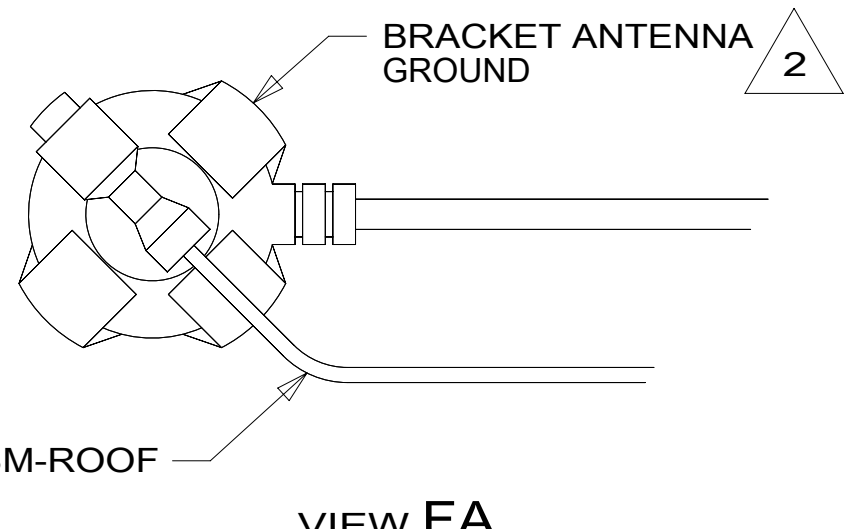
PRLED-4
9



DETAIL FB



DETAIL FC



- NOTES:
- 2 WRAP BRACKET LEGS AROUND ANTENNA BASE.
 - 1 SEE ANTENNA INSTALLATION MANUAL FOR CORRECT INSTALLATION PROCEDURE.

FOR ELECTRICAL TORQUE SPECIFICATIONS SEE DWG NO. 128783-01-000

FOR ELECTRICAL CALLOUTS SEE DWG NO. 121339-01-000

- 265 CODES/STANDARDS-CSA/CMVSS
- 1B1 CODES/STANDARDS USA

DESCRIPTION:		1B1 265	
WIRING INSTL-BODY, 12V			
SHEET:	ITEM/PART NO.:	REV	
6 OF 6	000120921 / 32287801000		