

8

7

6

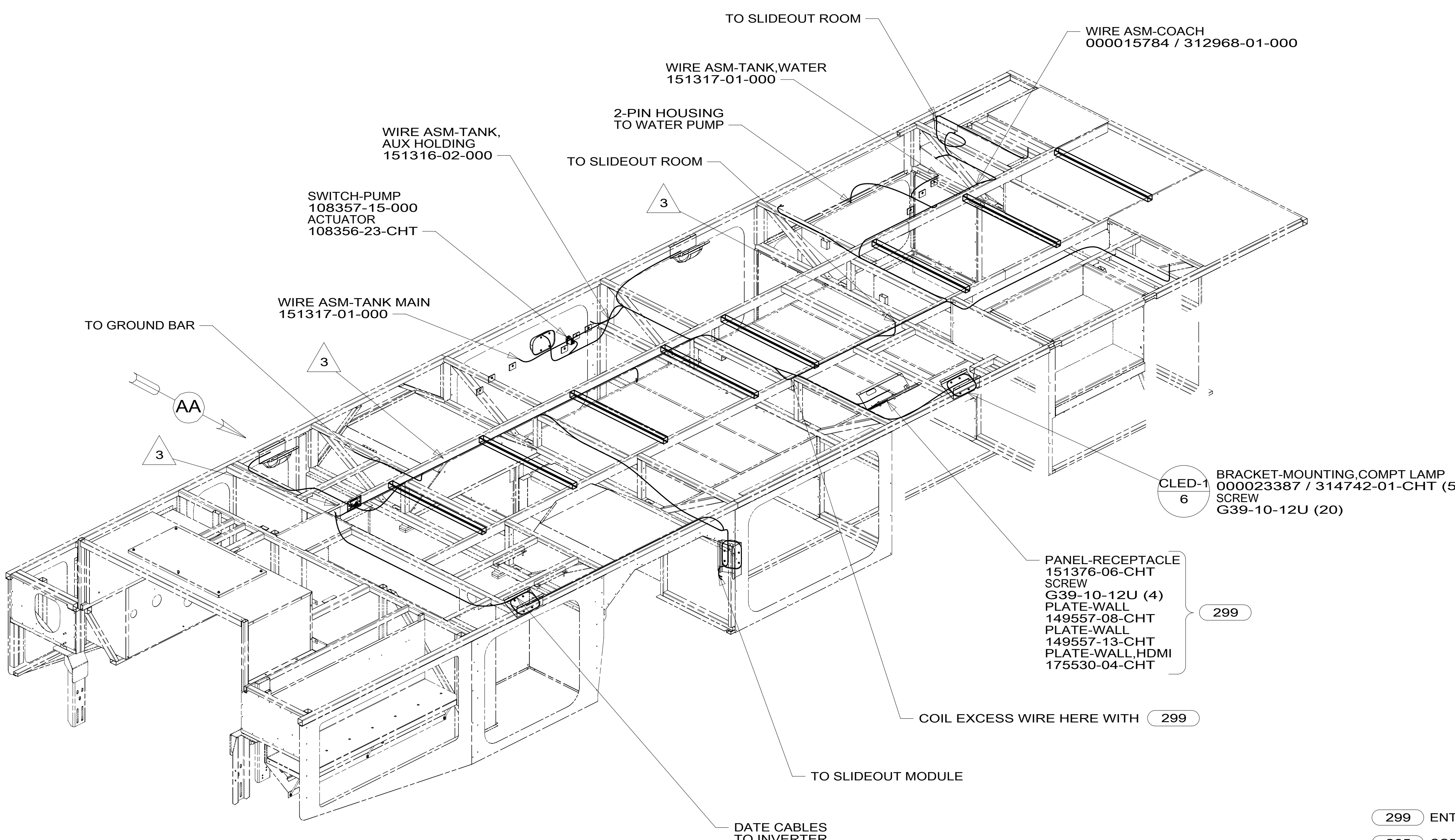
5

4

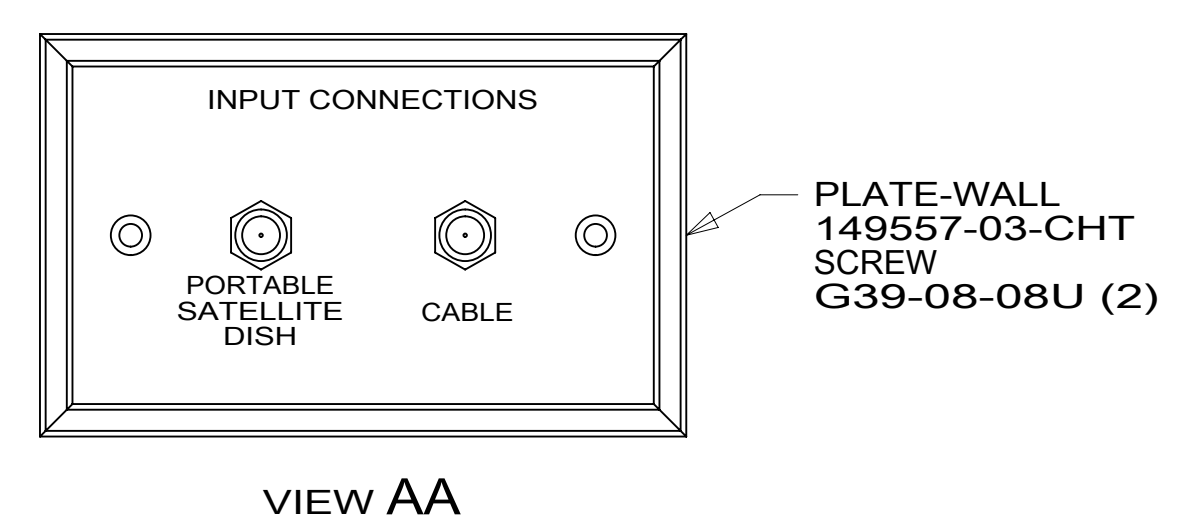
3

2

1



- 3 WIRE PASSES THROUGH FLOOR IN THIS AREA.
2. ROUTE TANK SENSOR WIRES SO THEY DO NOT PASS OVER SENSORS. USE WIRE TIE MOUNT 155366-01-000 AND WIRE TIE 8343-01-000 AS NEEDED. TANK SURFACE MUST BE CLEANED USING ISOPROPYL ALCOHOL AND PRIMED WITH PRIMER 94.
1. AT MINIMUM ALL WIRES TO BE SUPPORTED AND SECURED PER CODE REQUIREMENTS. USE CLAMP 10495 OR 10497 OR WIRE TIE 8343 OR 108046 AND SCREW G67-XX-XXX OR G56-XX-XXX AS APPROPRIATE FOR INSTALLATION.



FOR ELECTRICAL TORQUE SPECIFICATIONS SEE DWG NO. 128783-01-000

FOR ELECTRICAL CALLOUTS SEE DWG NO. 121339-01-000

- 299 ENTERTAINMENT CENTER EXT.W/O
- 265 CODES/STANDARDS-CSA/CMVSS
- 1B1 CODES/STANDARDS USA
- 1B1 265

WINNEBAGO
COPYRIGHT 2016 WINNEBAGO INDUSTRIES, INC.

DSNR:		ALL DIMENSIONS ARE IN MILLIMETERS	
DFFR:		MATERIAL:	
UNSPECIFIED TOLERANCES:			
WHOLE DIM (X)	: 3		
ONE-PLACE (X.X)	: 1.5		
TWO-PLACE (X.XX)	: 0.50		
ANGLE	: 1°		
REFER TO ES0018 FOR FASTENER TIGHTENING GUIDELINES		WEIGHT: (LBS)	FIRST USED:
			18 L34T
DESCRIPTION:			
WIRING INSTL-BODY, 12V			
SHEET:	ITEM/PART NO.:	REV:	
1 OF 8	000119412 / 32256201000		
REF:	1 07-Nov-2017		

8

7

6

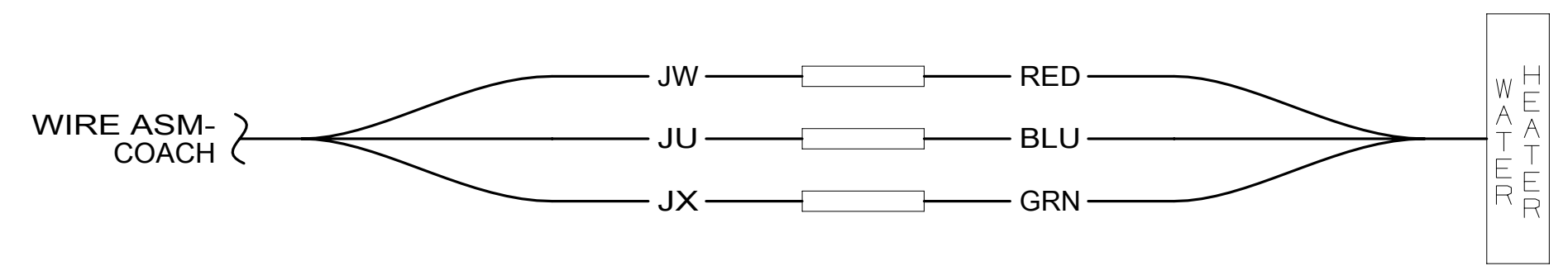
5

4

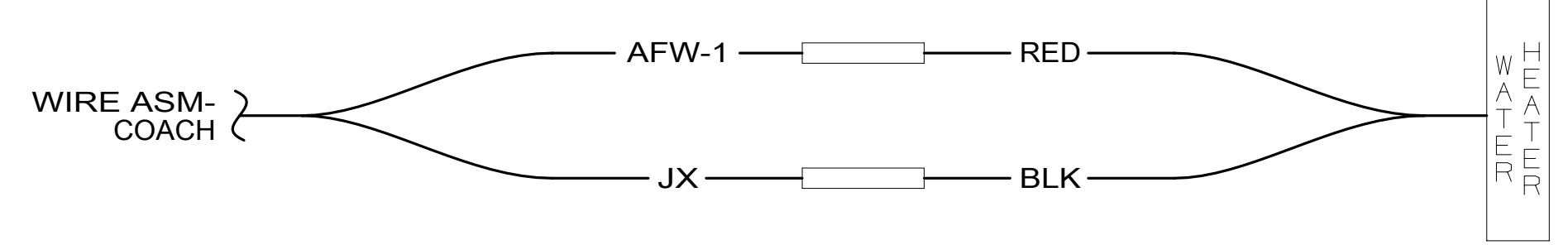
3

2

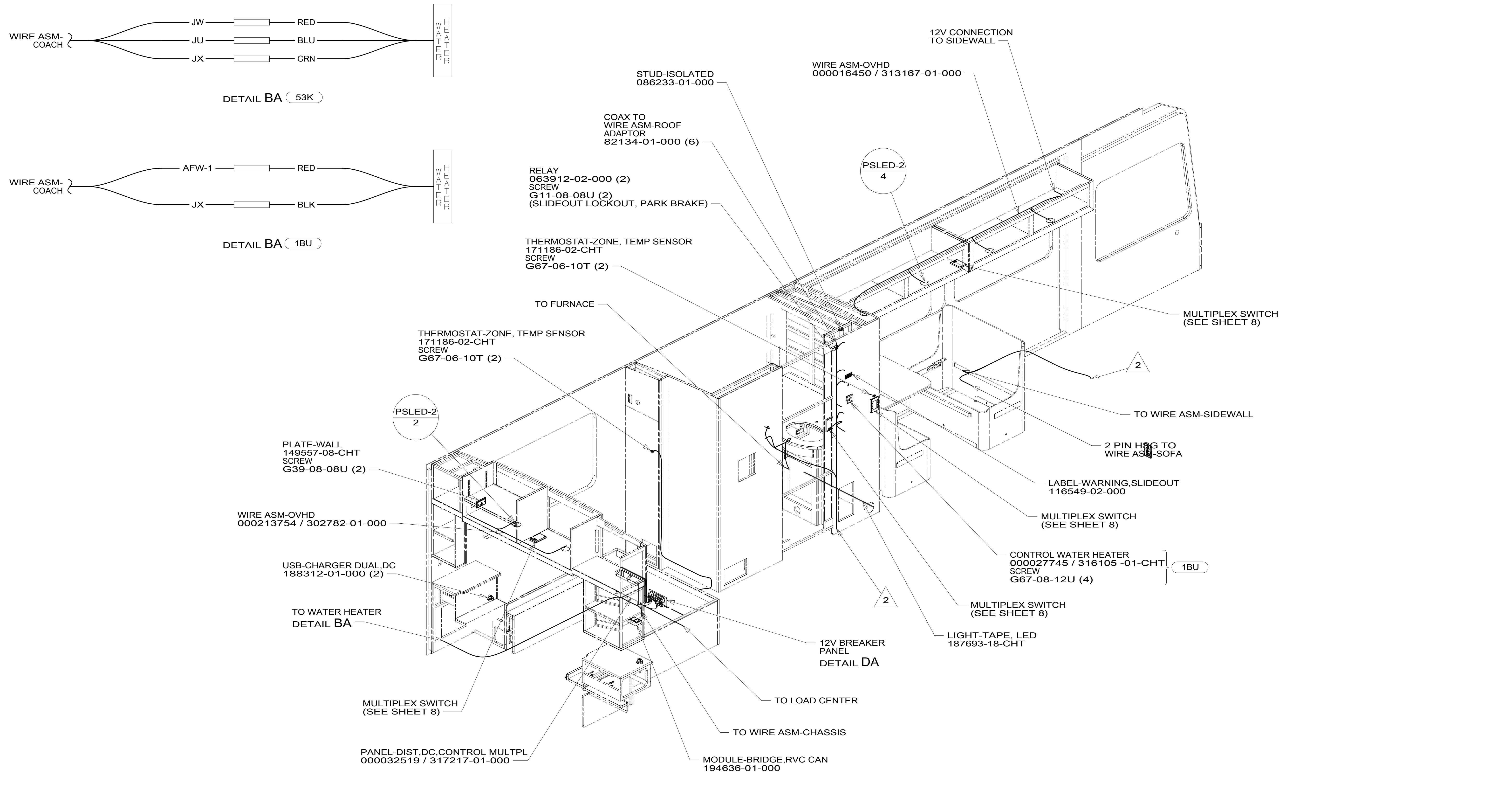
1



DETAIL BA 53K



DETAIL BA 1BU



2 WIRE PASSES THROUGH FLOOR IN THIS AREA.

1. AT MINIMUM ALL WIRES TO BE SUPPORTED AND SECURED PER CODE REQUIREMENTS. USE CLAMP 10495 OR 10497 OR WIRE TIE 8343 OR 108046 AND SCREW G67-XX-XXX OR G56-XX-XXX AS APPROPRIATE FOR INSTALLATION.

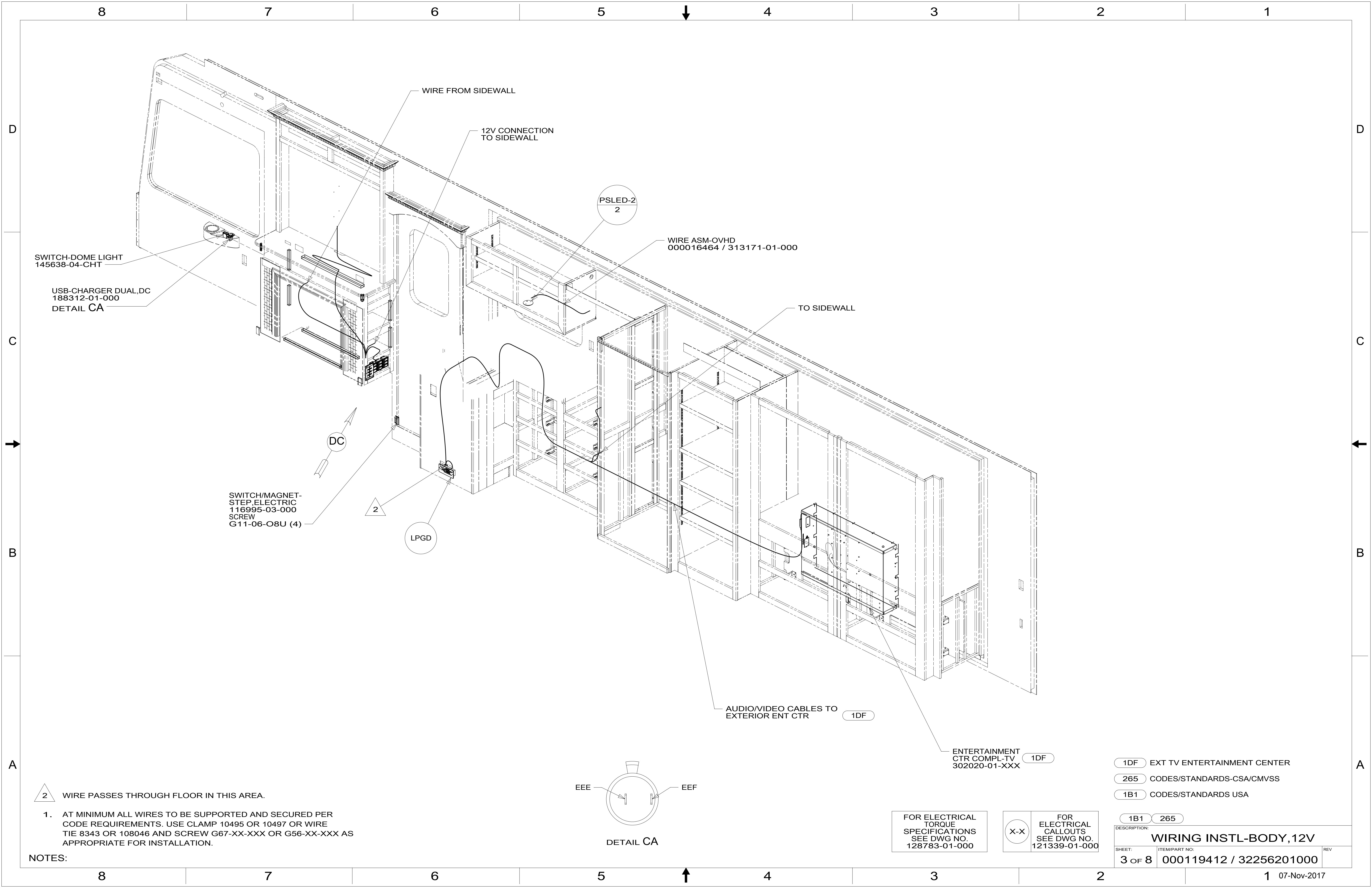
NOTES:

FOR ELECTRICAL TORQUE SPECIFICATIONS SEE DWG NO. 128783-01-000

FOR ELECTRICAL CALLOUTS SEE DWG NO. 121339-01-000

- 53K WTR HTR-10GAL/ELECTRIC/LPGAS
- 1BU WTR HTR TKLS W/RECIRCUL PUMP
- 265 CODES/STANDARDS-CSA/CMVSS
- 1B1 CODES/STANDARDS USA

DESCRIPTION:		1B1 265	
WIRING INSTL-BODY, 12V			
SHEET:	ITEM/PART NO.:	REV	
2 OF 8	000119412 / 32256201000		



SWITCH-DOME LIGHT
145638-04-CHT

USB-CHARGER DUAL,DC
188312-01-000
DETAIL CA

WIRE FROM SIDEWALL

12V CONNECTION
TO SIDEWALL

PSLED-2
2

WIRE ASM-OVHD
000016464 / 313171-01-000

TO SIDEWALL

SWITCH/MAGNET-
STEP,ELECTRIC
116995-03-000
SCREW
G11-06-O8U (4)

DC

2

LPGD

AUDIO/VIDEO CABLES TO
EXTERIOR ENT CTR

1DF

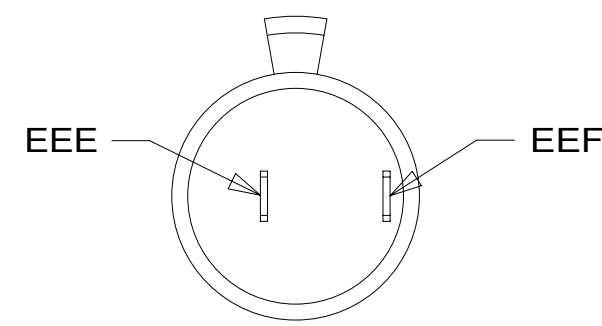
ENTERTAINMENT
CTR COMPL-TV
302020-01-XXX

1DF

2 WIRE PASSES THROUGH FLOOR IN THIS AREA.

1. AT MINIMUM ALL WIRES TO BE SUPPORTED AND SECURED PER
CODE REQUIREMENTS. USE CLAMP 10495 OR 10497 OR WIRE
TIE 8343 OR 108046 AND SCREW G67-XX-XXX OR G56-XX-XXX AS
APPROPRIATE FOR INSTALLATION.

NOTES:



DETAIL CA

FOR ELECTRICAL
TORQUE
SPECIFICATIONS
SEE DWG NO.
128783-01-000

FOR
ELECTRICAL
CALLOUTS
SEE DWG NO.
121339-01-000

1DF EXT TV ENTERTAINMENT CENTER

265 CODES/STANDARDS-CSA/CMVSS

1B1 CODES/STANDARDS USA

1B1 265

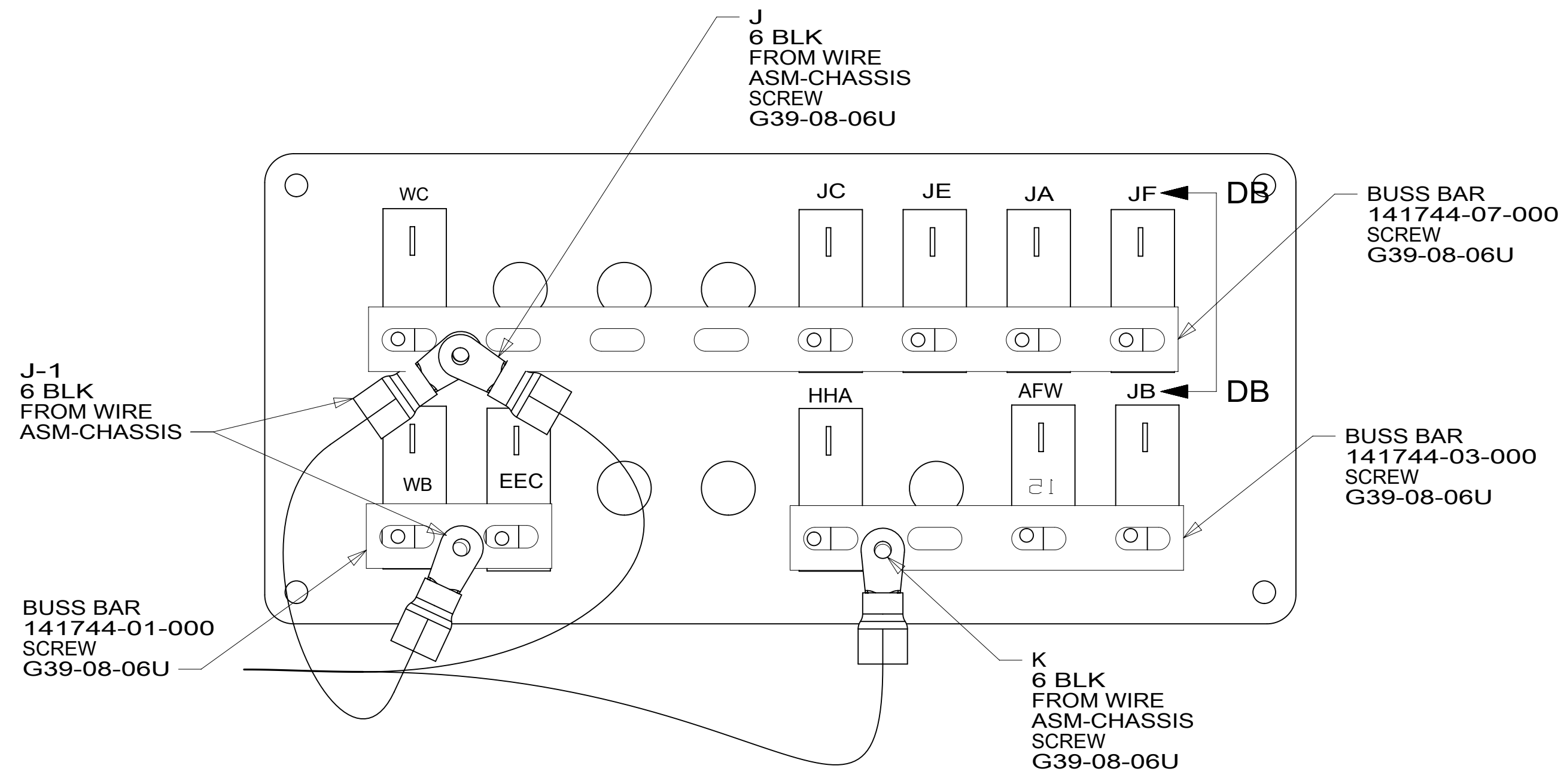
DESCRIPTION:
WIRING INSTL-BODY, 12V

SHEET:
3 OF 8

ITEM/PART NO:
000119412 / 32256201000

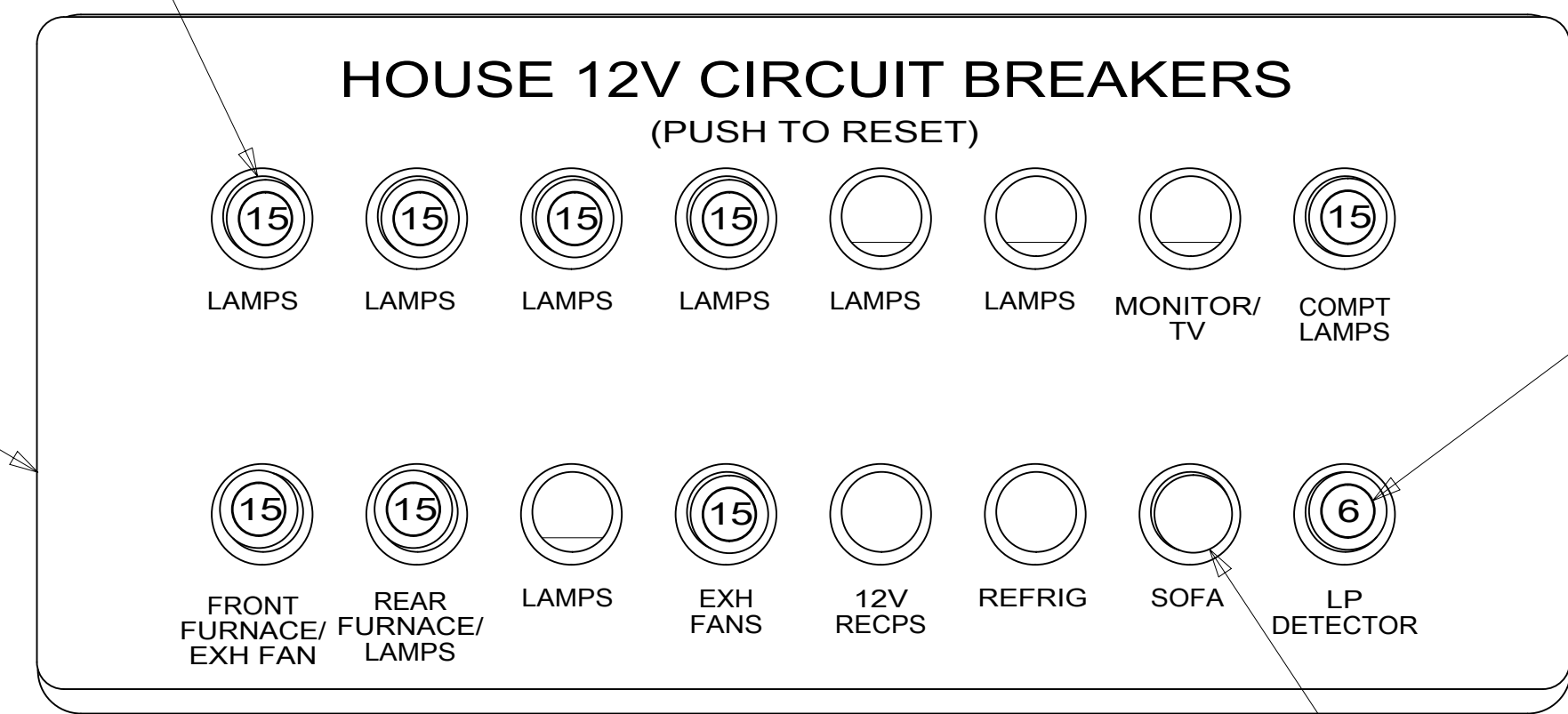
REV

1 07-Nov-2017



DETAIL DA (BACK VIEW)

CIRCUIT BREAKER
93654-02-000 (8)
(15 AMP)
SCREW
G52-06-04U (8)
WASHER
OME02B-04-071 (8)

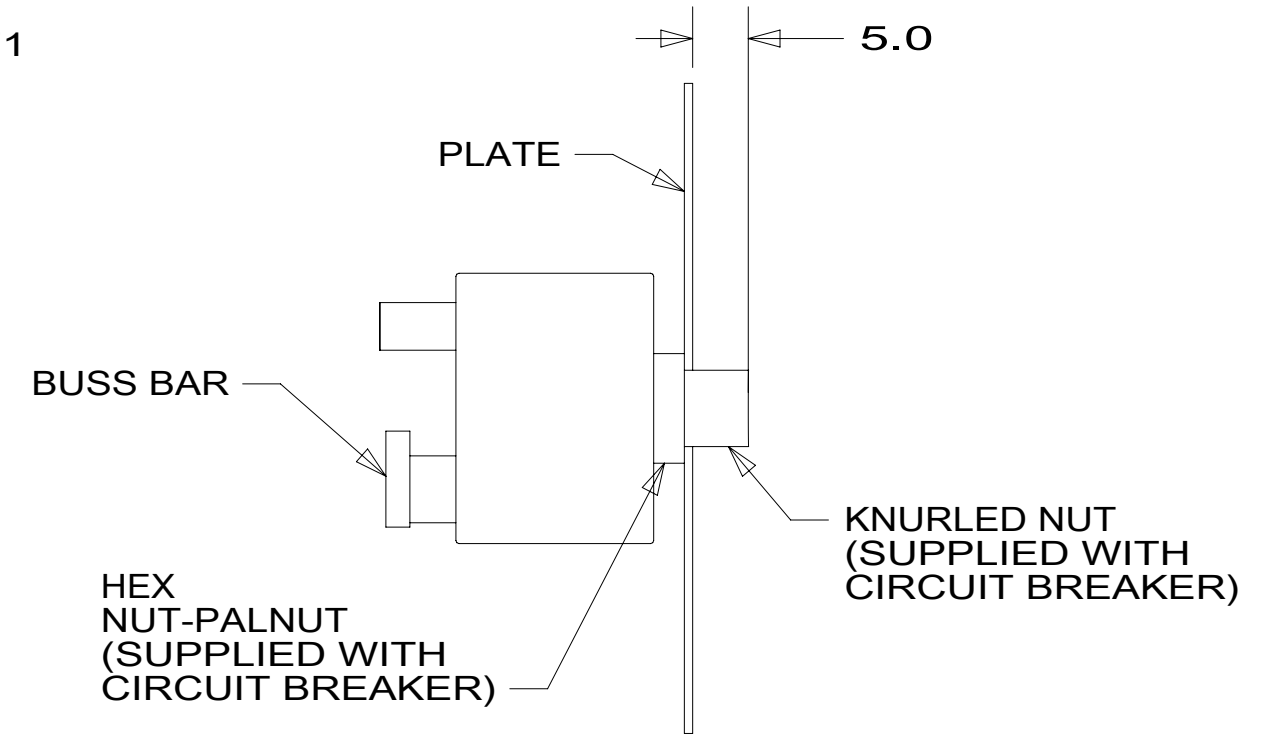


DETAIL DA (FRONT VIEW)

PLATE
139067-05-CHT
LABEL
92547-13-000
SCREW
G11-10-12U (4)

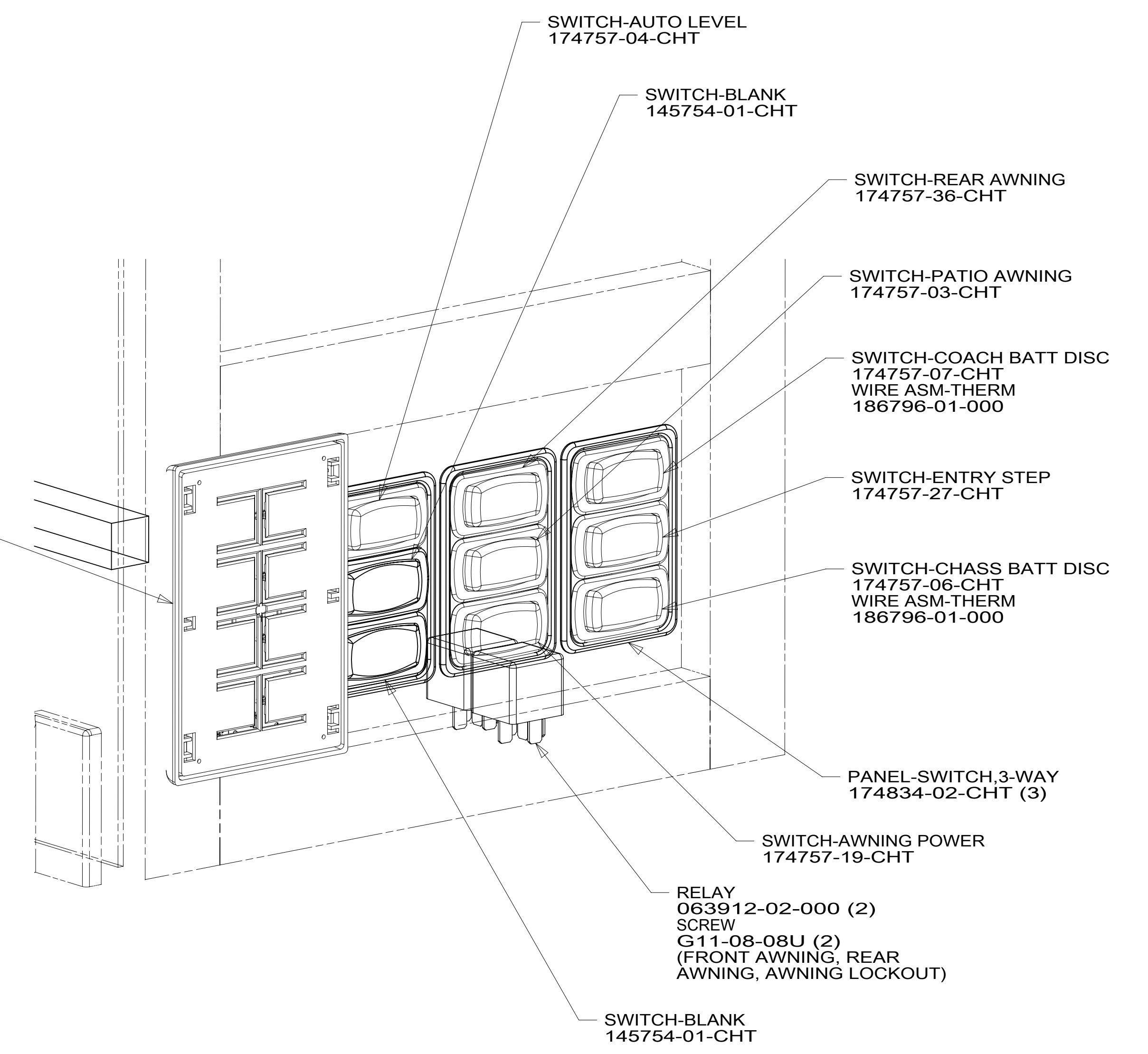
CIRCUIT BREAKER
93654-01-000
(6 AMP)
SCREW
G52-06-04U
WASHER
OME02B-04-071

CIRCUIT BREAKER
182283-01-000
(20 AMP)
SCREW
G52-06-04U
WASHER
OME02B-04-071



VIEW DB-DB

MULTIPLEX SWITCH (SEE SHEET 8)



DETAIL DC

FOR ELECTRICAL TORQUE SPECIFICATIONS SEE DWG NO. 128783-01-000

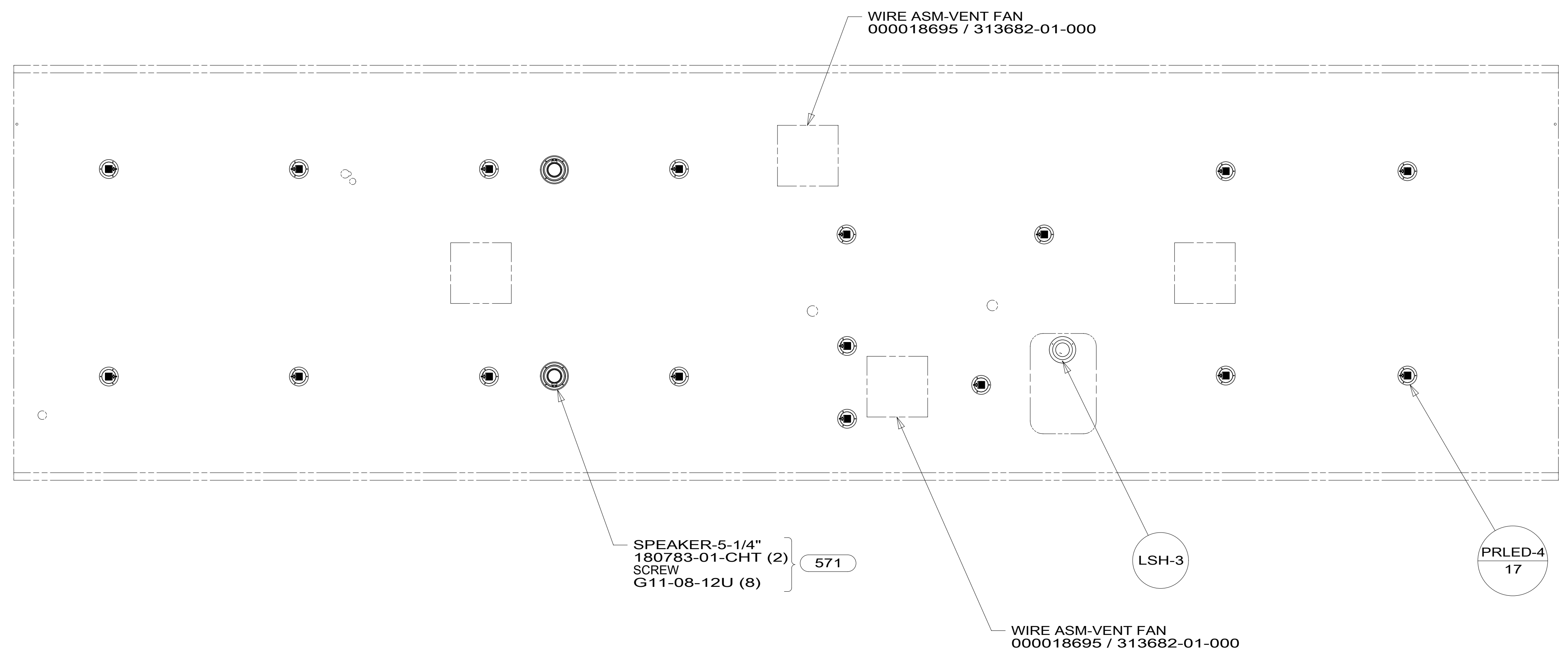
FOR ELECTRICAL CALLOUTS SEE DWG NO. 121339-01-000

265 CODES/STANDARDS-CSA/CMVSS
1B1 CODES/STANDARDS USA

DESCRIPTION: WIRING INSTL-BODY, 12V	
SHEET: 4 OF 8	ITEM/PART NO.: 000119412 / 32256201000
REV	

8 7 6 5 4 3 2 1

D
C
B
A



WIRE ASM-VENT FAN
000018695 / 313682-01-000

SPEAKER-5-1/4"
180783-01-CHT (2)
SCREW
G11-08-12U (8)

571

LSH-3

PRLED-4
17

WIRE ASM-VENT FAN
000018695 / 313682-01-000

- 571 RADIO SPEAKERS
- 265 CODES/STANDARDS-CSA/CMVSS
- 1B1 CODES/STANDARDS USA

FOR ELECTRICAL
TORQUE
SPECIFICATIONS
SEE DWG NO.
128783-01-000

FOR
ELECTRICAL
CALLOUTS
SEE DWG NO.
121339-01-000

DESCRIPTION:		1B1 265	
WIRING INSTL-BODY, 12V			
SHEET:	ITEM/PART NO.:	REV	
5 OF 8	000119412 / 32256201000		

8 7 6 5 4 3 2 1 07-Nov-2017

8

7

6

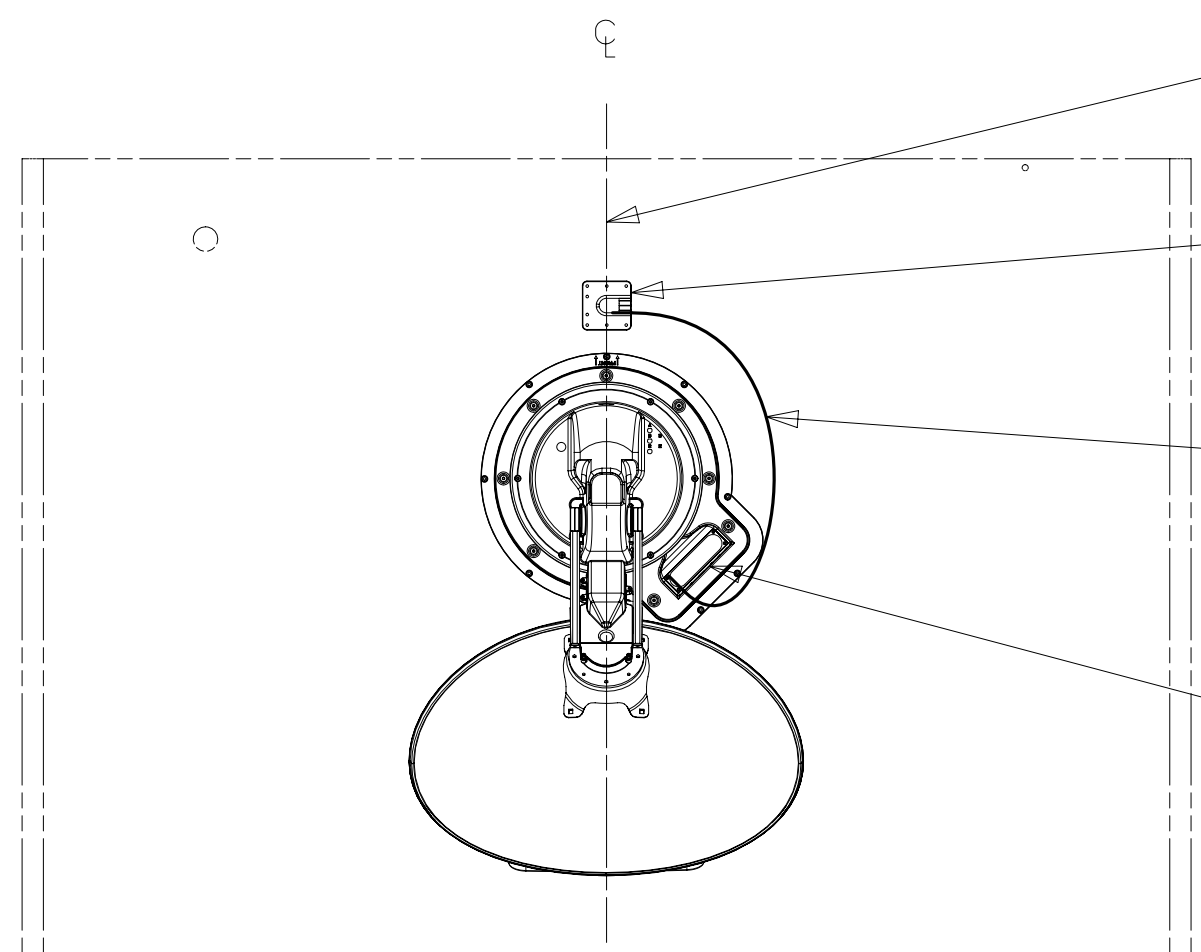
5

4

3

2

1



DETAIL FA

THE SATELLITE DISH AND WIRE CONNECTIONS ARE TO BE PLACED ON THE CENTERLINE OF THE MOTORHOME FACING FORWARD.

SEPARATE CABLES AND INSTALL WIRE COVER OVER HOLE IN ROOF ASM WITH CABLES EXITING ON PASSENGERS SIDE.

WHEN APPLYING ROOF SEALANT TO SATELLITE DISH, PLACE ROOF SEALANT HERE (APPROX. 75MM WIDE) AND PUSH THE CABLES INTO THE SEALANT TO STABILIZE THEM.

CONNECT CABLE ASM-COAX FROM ROOF ASM TO COAX CABLES ON SATELLITE DISH AND CONNECT 10' CABLE-DATA FROM ROOF ASM TO DATA CABLE FROM SATELLITE DISH AND PLACE ALL CONNECTIONS BACK INTO ROOF ASM.

1 783
DETAIL FA

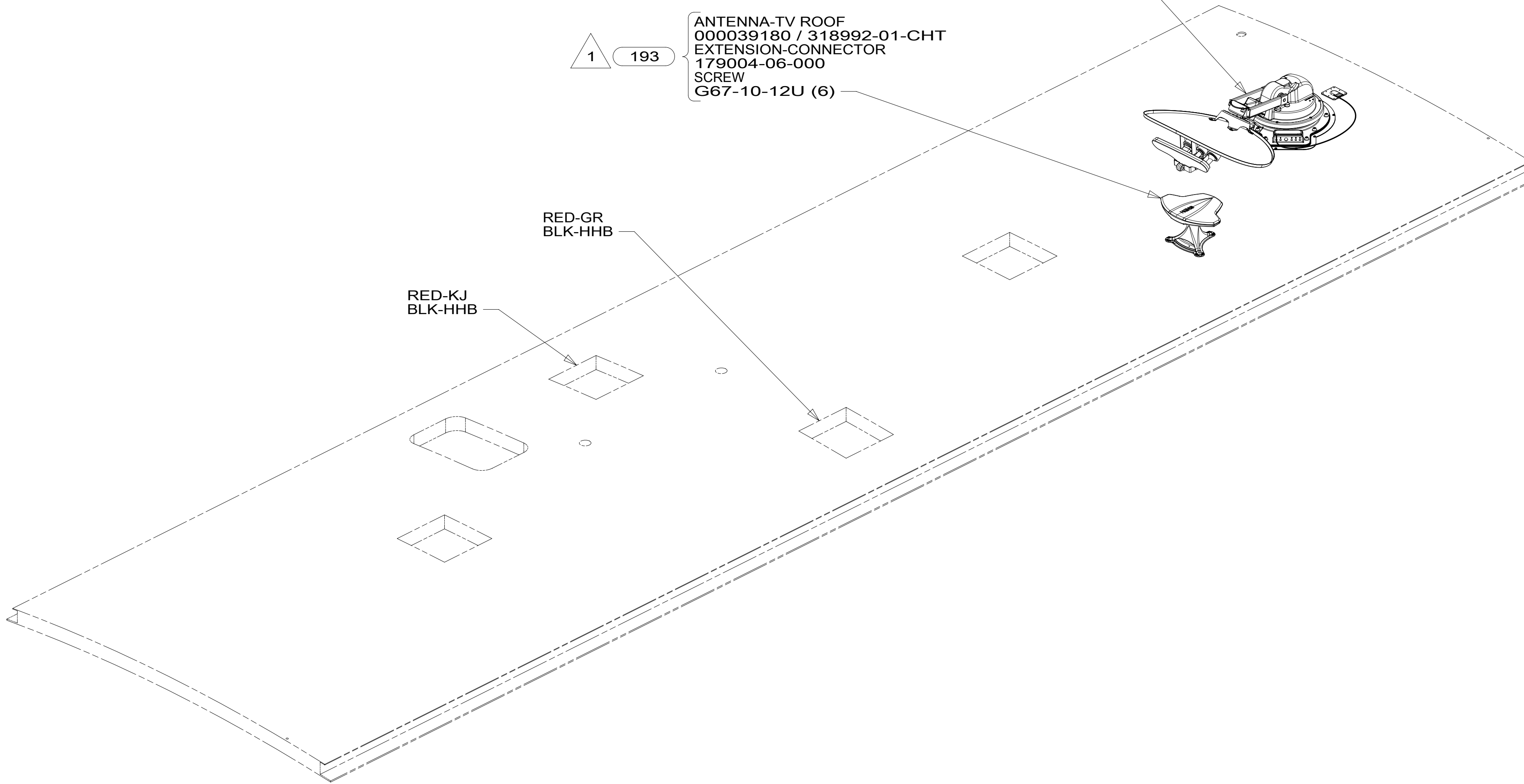
DA-4

1 193

ANTENNA-TV ROOF
000039180 / 318992-01-CHT
EXTENSION-CONNECTOR
179004-06-000
SCREW
G67-10-12U (6)

RED-GR
BLK-HHB

RED-KJ
BLK-HHB



783 SATELLITE HD TV SYSTEM AUTOC

193 TV ANTENNA-AMPLIFIED SYSTEM

265 CODES/STANDARDS-CSA/CMVSS

1B1 CODES/STANDARDS USA

1B1 265

FOR ELECTRICAL TORQUE SPECIFICATIONS SEE DWG NO. 128783-01-000

FOR ELECTRICAL CALLOUTS SEE DWG NO. 121339-01-000

1 SEE MANUFACTURER'S INSTALLATION FOR ADDITIONAL INFORMATION.

NOTES:

DESCRIPTION: WIRING INSTL-BODY, 12V

SHEET: 6 OF 8 ITEM/PART NO.: 000119412 / 32256201000 REV

8

7

6

5

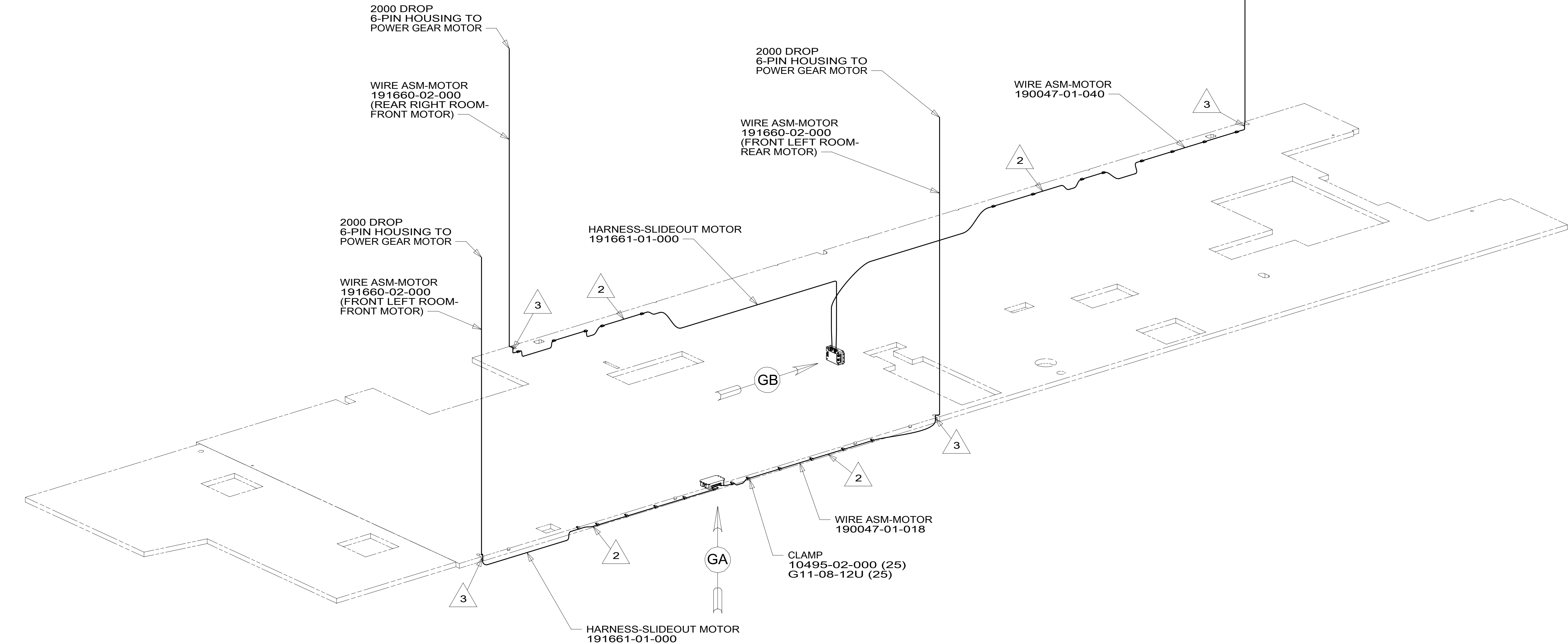
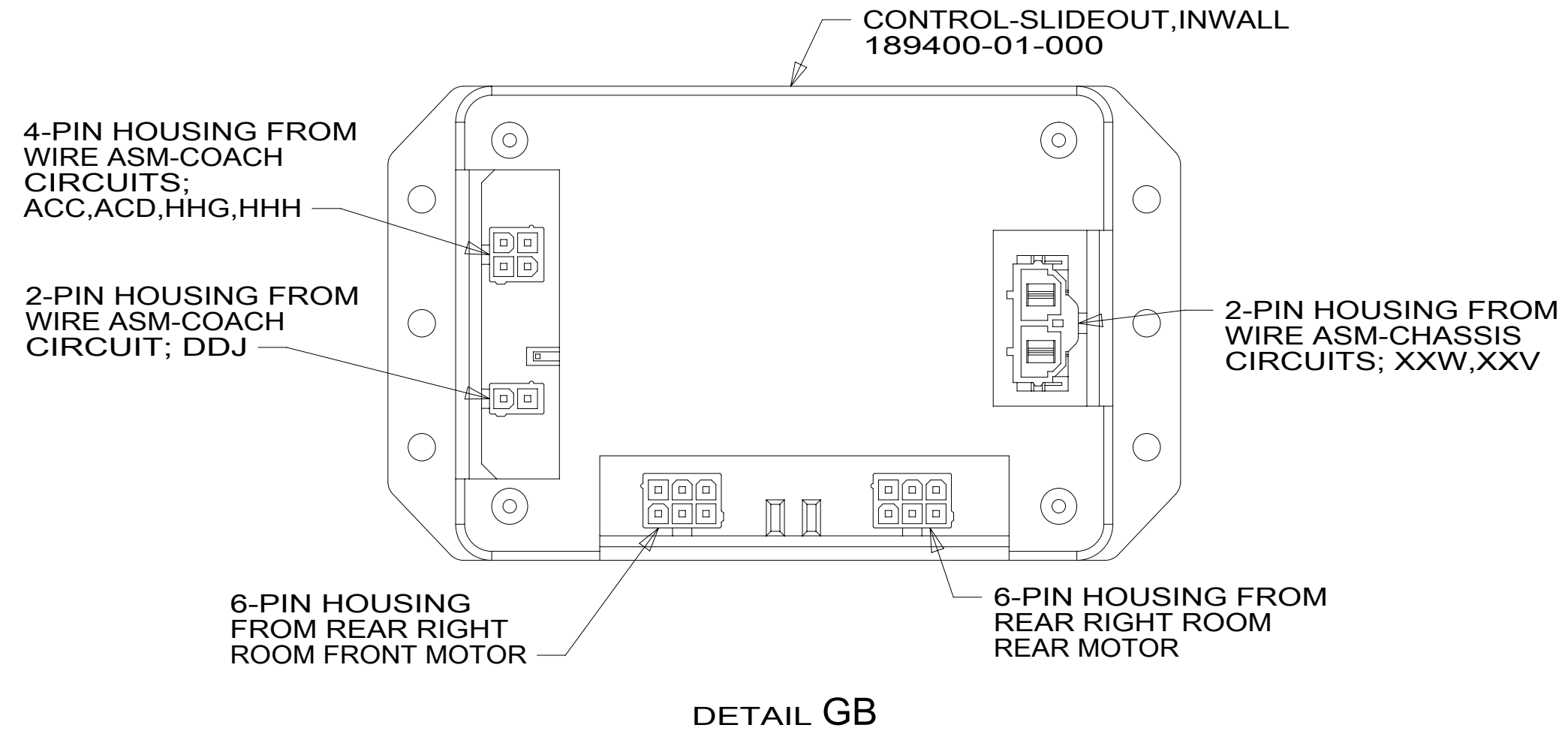
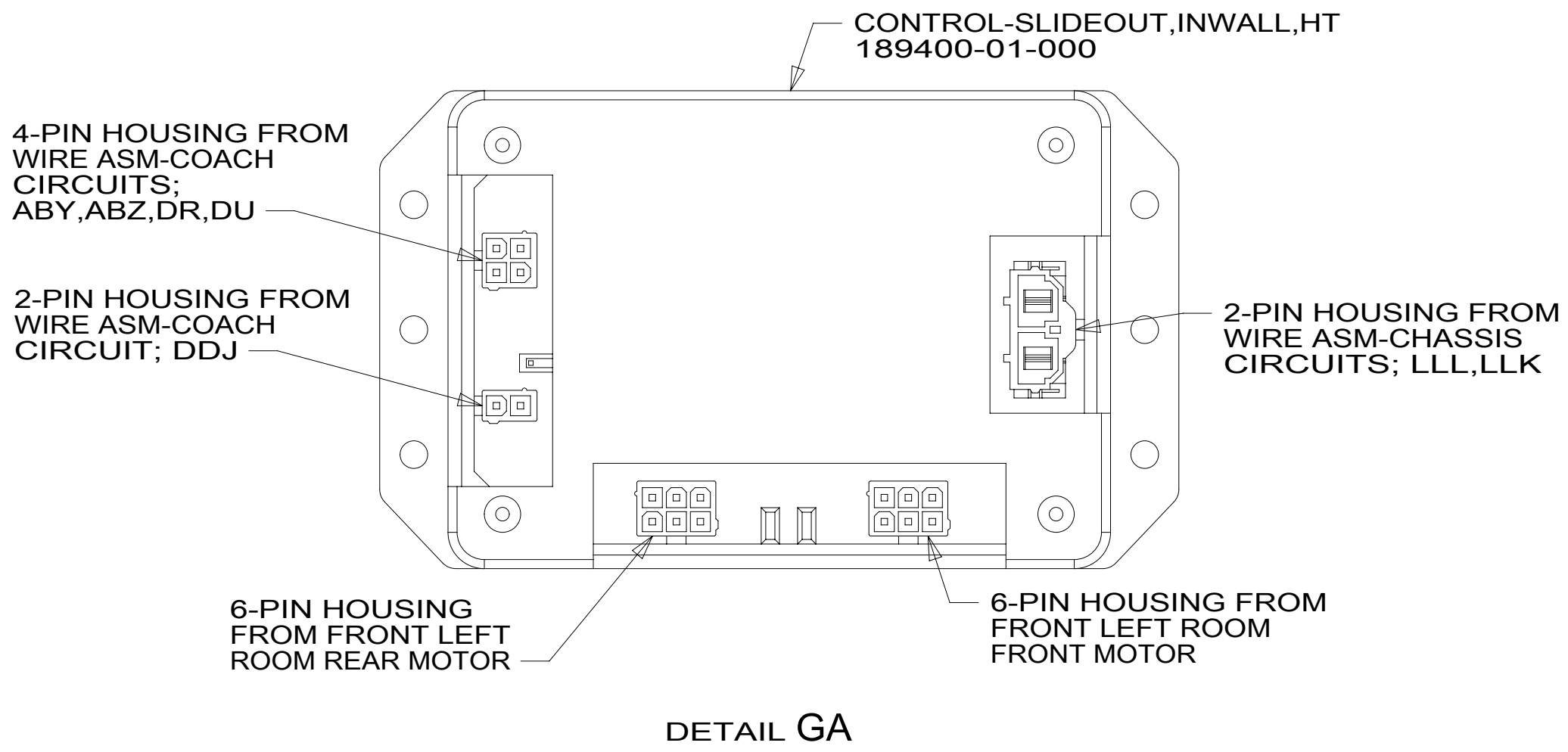
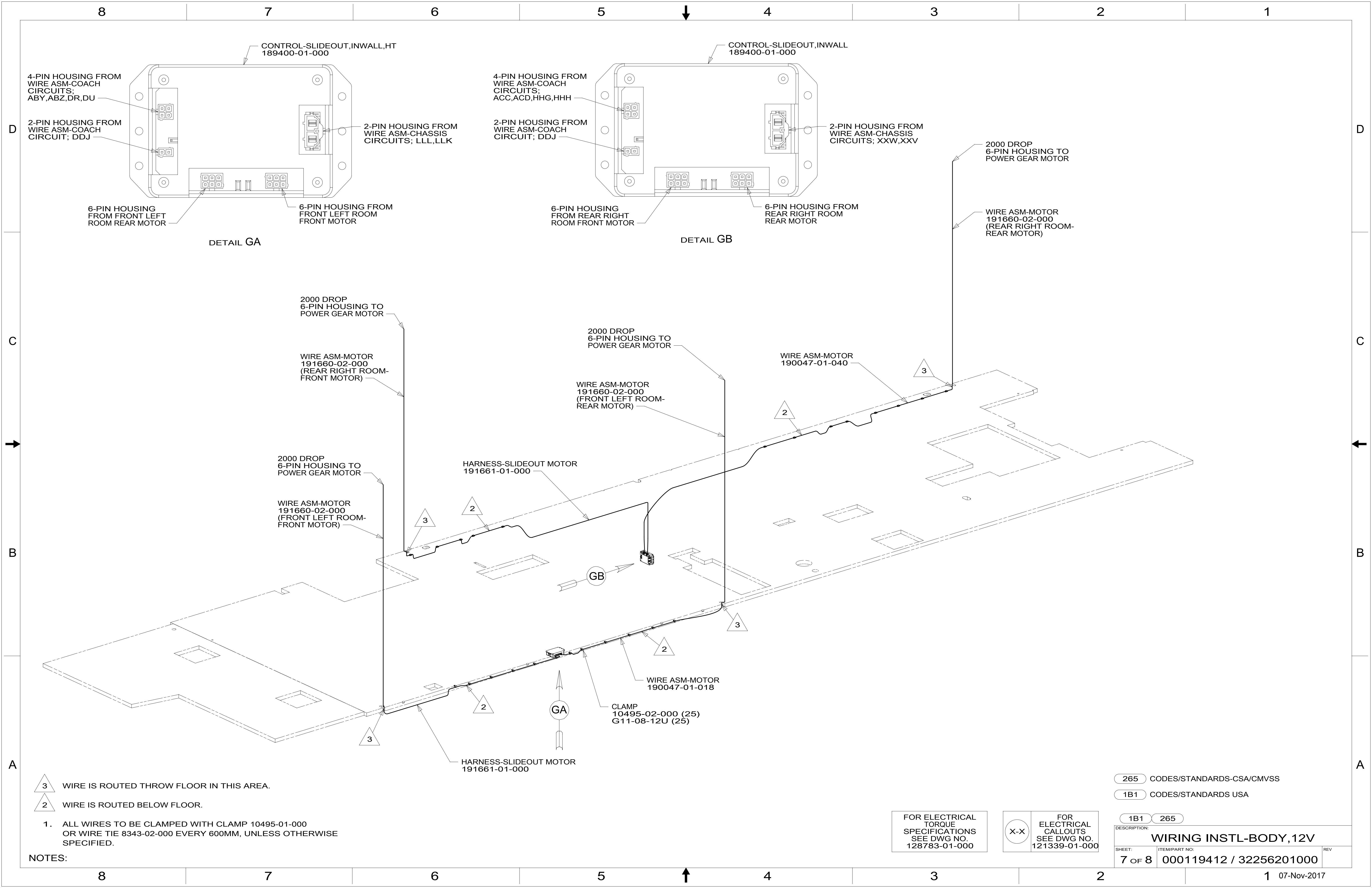
4

3

2

1

07-Nov-2017



- 3 WIRE IS ROUTED THROU FLOOR IN THIS AREA.
- 2 WIRE IS ROUTED BELOW FLOOR.

1. ALL WIRES TO BE CLAMPED WITH CLAMP 10495-01-000 OR WIRE TIE 8343-02-000 EVERY 600MM, UNLESS OTHERWISE SPECIFIED.

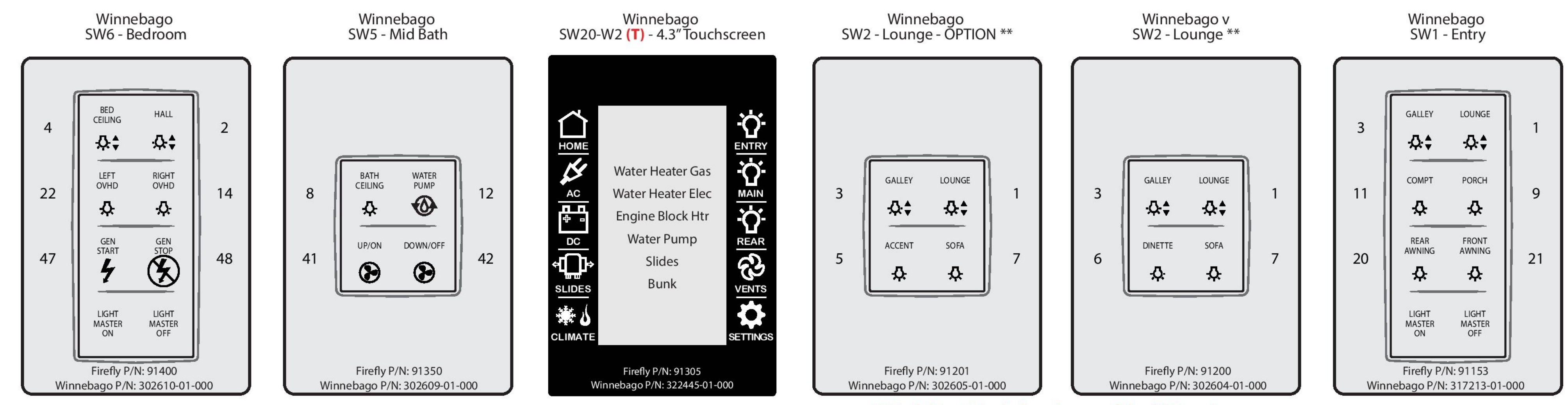
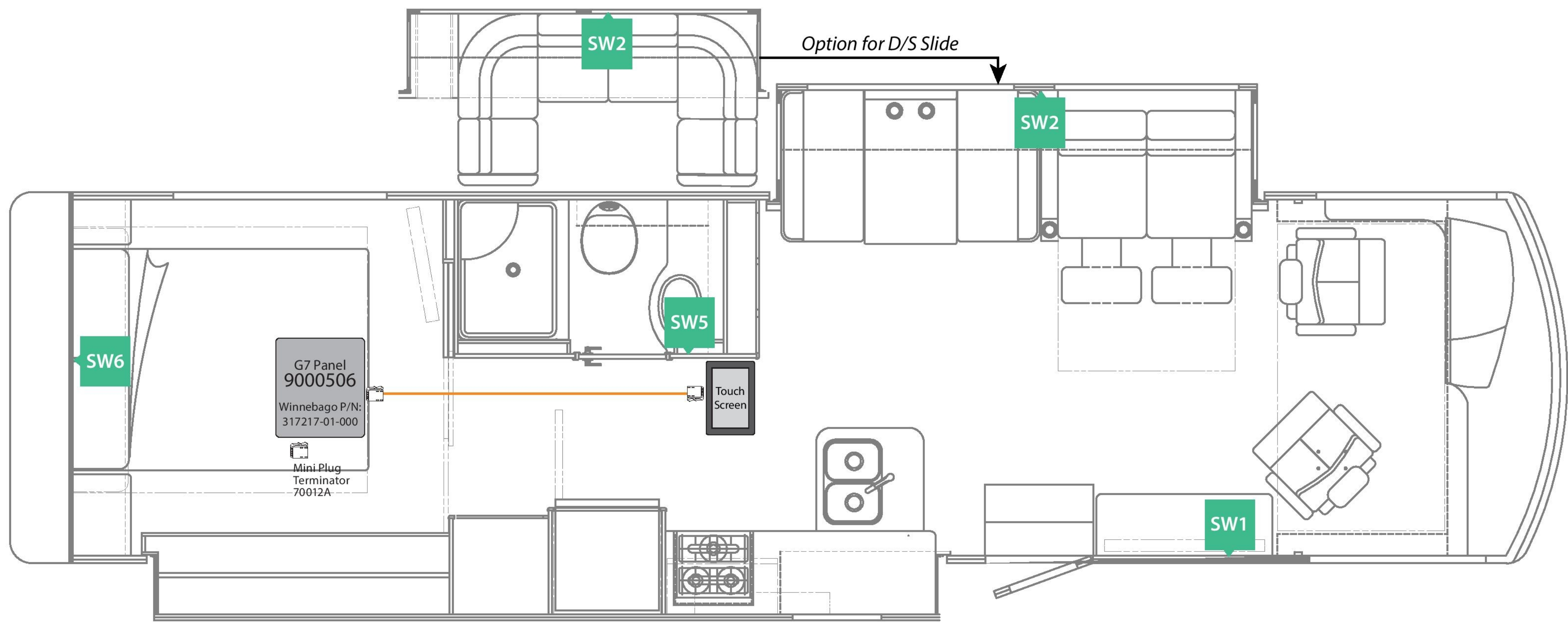
NOTES:

265 CODES/STANDARDS-CSA/CMVSS
1B1 CODES/STANDARDS USA

FOR ELECTRICAL TORQUE SPECIFICATIONS SEE DWG NO. 128783-01-000

FOR ELECTRICAL CALLOUTS SEE DWG NO. 121339-01-000

DESCRIPTION:	
WIRING INSTL-BODY, 12V	
SHEET:	ITEM/PART NO:
7 OF 8	000119412 / 32256201000
REV	
1 07-Nov-2017	



** Each kit will include only one of the SW2 options

L34T KIT*: Firefly P/N: 90850AC
 L34T Winnebago P/N: 322446-01-000
 L34T OPTION KIT*: Firefly P/N: 90850AF
 L34T OPTION Winnebago P/N: 322447-01-000
 * Kits may not include all components shown on print.

WINNEBAGO - L34T - V3			DI: AD/MD	Network Legend	
Network Wiring Diagram and Switch Panel Layout			PI: AD/AA		
SSP-17 & 4.3" Screen (6v9)	Rev. 0v1	05/10/17		Trunk Cable	
				Drop Cable	
				Switch Position	

- 421 SOFA/DINETTE SECTIONAL
- 22P DINETTE & LOVE SEAT
- 265 CODES/STANDARDS-CSA/CMVSS
- 1B1 CODES/STANDARDS USA

NOTES:
 1. USE KIT # 000118588 / 322446-01-000 FOR 22P
 OR USE KIT 3 000118587 / 322447-01-000 FOR 421

FOR ELECTRICAL TORQUE SPECIFICATIONS SEE DWG NO. 128783-01-000

X-X

FOR ELECTRICAL CALLOUTS SEE DWG NO. 121339-01-000

DESCRIPTION:	WIRING INSTL-BODY, 12V	
SHEET:	ITEM/PART NO:	REV
8 OF 8	000119412 / 32256201000	