

8 7 6 5 4 3 2 1

D

D

C

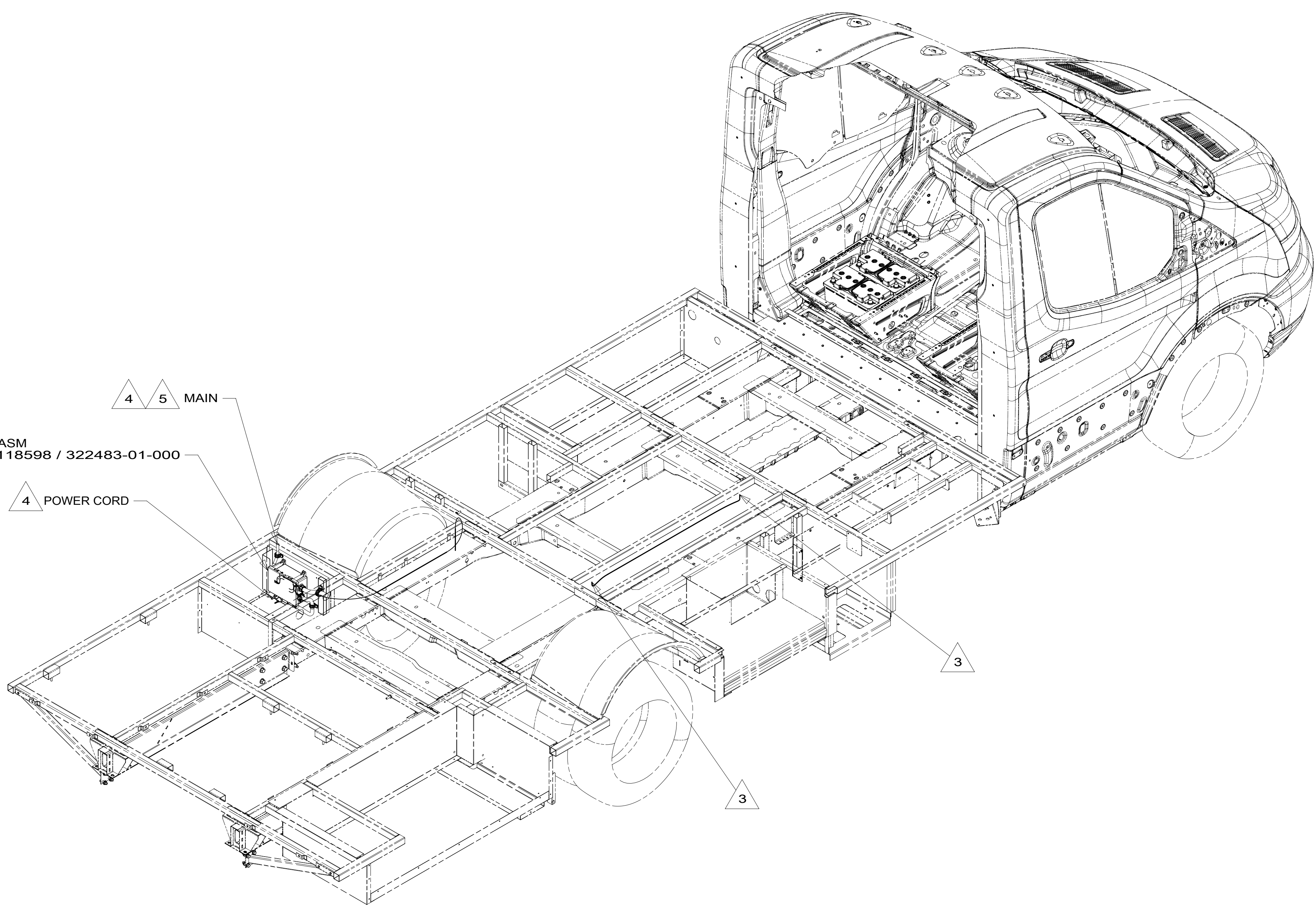
C

B

B

A

A



ATS ASM
000118598 / 322483-01-000

- 5 MAIN IS RUN UP THROUGH FLOOR, THEN IN FLOOR (WITH BLUE CIRCUIT) TO RIGHT SIDE TO LOAD CENTER.
 - 4 SEE ATS ASM FOR ADDITIONAL INFORMATION.
 - 3 ROUTE WIRE THRU FLOOR.
2. ALL 110V WIRE TO BE CLAMPED WITH CLAMP 10497-05-000 WITHIN 200MM OF OUTLET BOXES, USE SCREW G67-10-12B.
 1. AT MINIMUM ALL WIRES TO BE SUPPORTED AND SECURED PER CODE REQUIREMENTS. USE CLAMP 10495 OR 10497 OR WIRE TIE 8343 OR 108046 AND SCREW G67-XX-XXX OR G56-XX-XXX AS APPROPRIATE FOR INSTALLATION.

NOTES:

FOR ELECTRICAL TORQUE SPECIFICATIONS SEE DWG NO. 128783-01-000

FOR ELECTRICAL CALLOUTS SEE DWG NO. 121339-01-000

- 265 CODES/STANDARDS-CSA/CMVSS
- 1B1 CODES/STANDARDS USA
- 1B1 265



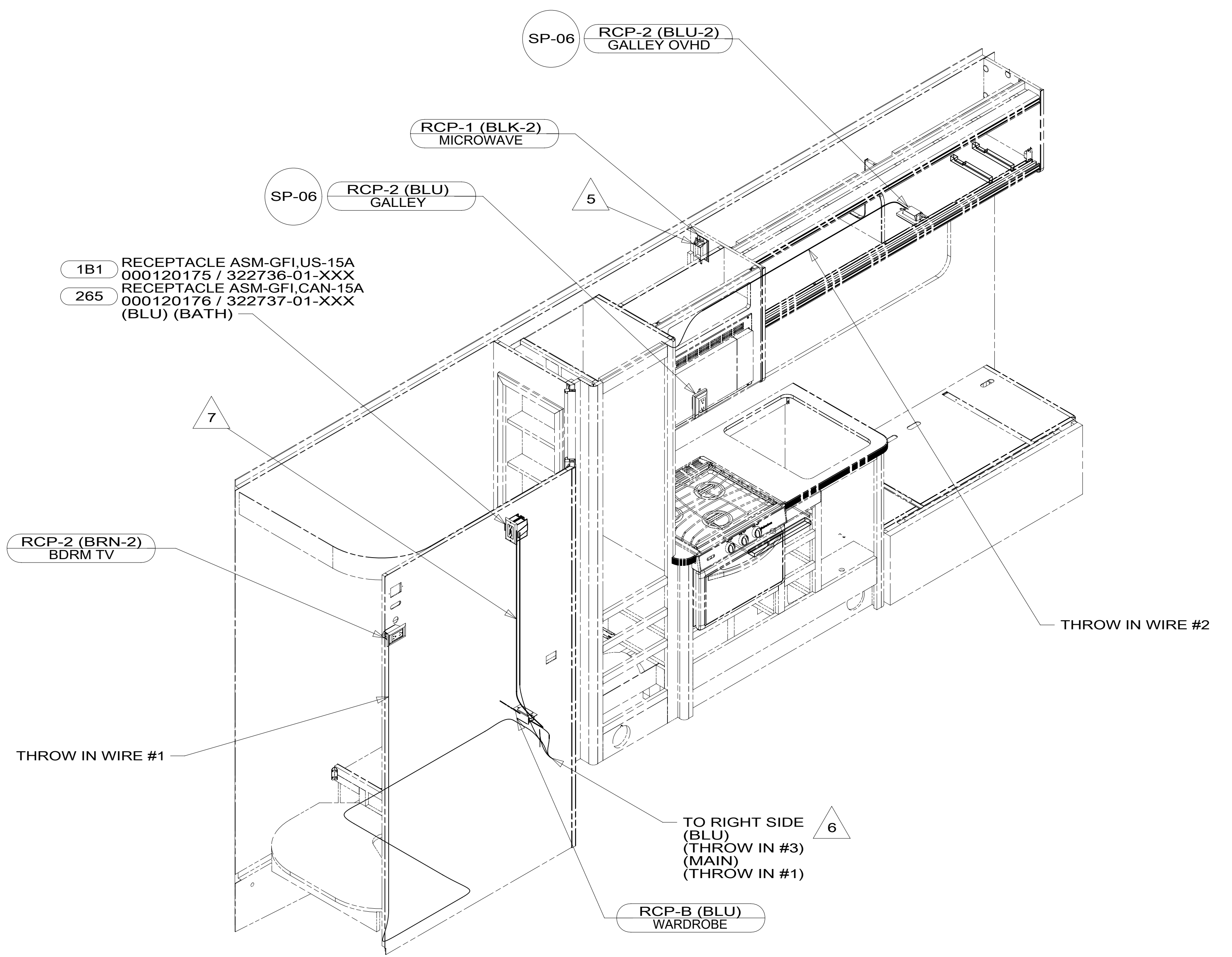
DSNR:		ALL DIMENSIONS ARE IN MILLIMETERS	
DFFR:		MATERIAL:	
UNSPECIFIED TOLERANCES:		WEIGHT: (LBS)	FIRST USED:
WHOLE DIM (X)	: 3		18 423T
ONE-PLACE (X.X)	: 1.5		
TWO-PLACE (X.XX)	: 0.50		
ANGLE	: 1°		

REFER TO ES0018 FOR FASTENER TIGHTENING GUIDELINES

WIRING INSTL-BODY, 110V

SHEET:	ITEM/PART NO.:	REF:
1 OF 6	000118423 / 32242401000	1 21-Nov-2017

8 7 6 5 4 3 2 1



- 7 1400MM LOOP, BLUE WIRE, FROM OUT OF FLOOR THRU BLANK, UP TO GFI & BACK TO GFI PROTECTED BLANK. (BLU#2)
- 6 THRU ROUTED PATH IN FLOOR ASM. (BLU, THROW-IN #3, MAIN.
- 5 WIRE ROUTED IN ROOF.
- 4. FOR MORE INFORMATION SEE WIRING DIAGRAM-BODY,110V.
- 3. ALL GROUND WIRE TO BE COVERED WITH TUBING 8041-02-000.
- 2. ALL 110V WIRE TO BE CLAMPED WITH CLAMP 10497-05-000 WITHIN 200MM OF OUTLET BOXES, USE SCREW G67-10-12B.
- 1. AT MINIMUM ALL WIRES TO BE SUPPORTED AND SECURED PER CODE REQUIREMENTS. USE CLAMP 10495 OR 10497 OR WIRE TIE 8343 OR 108046 AND SCREW G67-XX-XXX OR G56-XX-XXX AS APPROPRIATE FOR INSTALLATION.

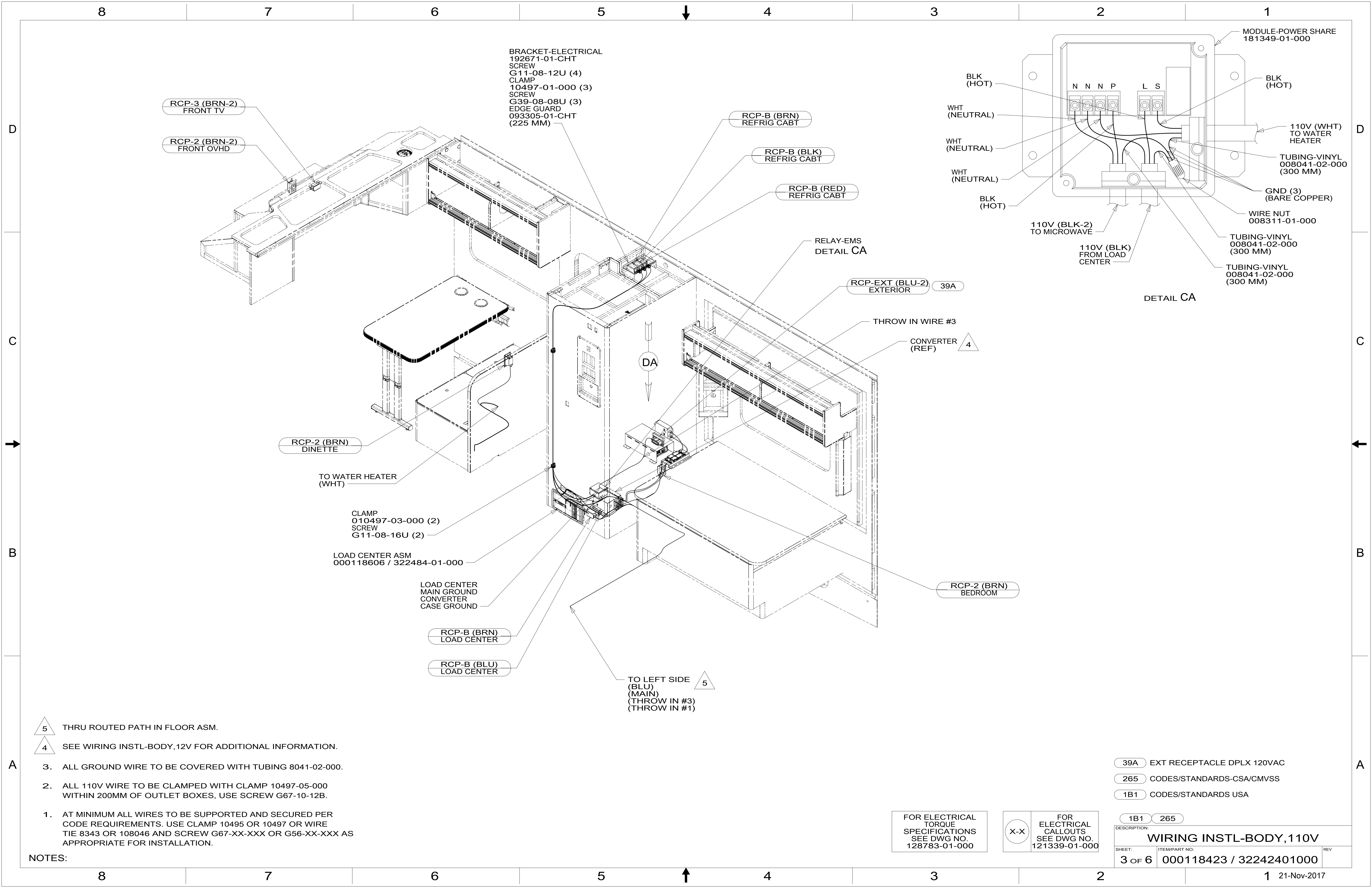
NOTES:

265 CODES/STANDARDS-CSA/CMVSS
1B1 CODES/STANDARDS USA

FOR ELECTRICAL TORQUE SPECIFICATIONS SEE DWG NO. 128783-01-000

FOR ELECTRICAL CALLOUTS SEE DWG NO. 121339-01-000

DESCRIPTION:	
WIRING INSTL-BODY, 110V	
SHEET:	ITEM/PART NO. REV
2 OF 6	000118423 / 32242401000



RCP-3 (BRN-2)
FRONT TV

RCP-2 (BRN-2)
FRONT OVHD

BRACKET-ELECTRICAL
192671-01-CHT
SCREW
G11-08-12U (4)
CLAMP
10497-01-000 (3)
SCREW
G39-08-08U (3)
EDGE GUARD
093305-01-CHT
(225 MM)

RCP-B (BRN)
REFRIG CABT

RCP-B (BLK)
REFRIG CABT

RCP-B (RED)
REFRIG CABT

RELAY-EMS
DETAIL CA

RCP-EXT (BLU-2)
EXTERIOR 39A

THROW IN WIRE #3

CONVERTER (REF) 4

RCP-2 (BRN)
DINETTE

TO WATER HEATER
(WHT)

CLAMP
010497-03-000 (2)
SCREW
G11-08-16U (2)

LOAD CENTER ASM
000118606 / 322484-01-000

LOAD CENTER
MAIN GROUND
CONVERTER
CASE GROUND

RCP-B (BRN)
LOAD CENTER

RCP-B (BLU)
LOAD CENTER

TO LEFT SIDE
(BLU)
(MAIN)
(THROW IN #3)
(THROW IN #1) 5

BLK (HOT)

WHT (NEUTRAL)

WHT (NEUTRAL)

WHT (NEUTRAL)

BLK (HOT)

110V (BLK-2)
TO MICROWAVE

110V (BLK)
FROM LOAD
CENTER

DETAIL CA

MODULE-POWER SHARE
181349-01-000

BLK (HOT)

110V (WHT)
TO WATER
HEATER

TUBING-VINYL
008041-02-000
(300 MM)

GND (3)
(BARE COPPER)

WIRE NUT
008311-01-000

TUBING-VINYL
008041-02-000
(300 MM)

TUBING-VINYL
008041-02-000
(300 MM)

- 5 THRU ROUTED PATH IN FLOOR ASM.
- 4 SEE WIRING INSTL-BODY, 12V FOR ADDITIONAL INFORMATION.

- 3. ALL GROUND WIRE TO BE COVERED WITH TUBING 8041-02-000.
- 2. ALL 110V WIRE TO BE CLAMPED WITH CLAMP 10497-05-000 WITHIN 200MM OF OUTLET BOXES, USE SCREW G67-10-12B.
- 1. AT MINIMUM ALL WIRES TO BE SUPPORTED AND SECURED PER CODE REQUIREMENTS. USE CLAMP 10495 OR 10497 OR WIRE TIE 8343 OR 108046 AND SCREW G67-XX-XXX OR G56-XX-XXX AS APPROPRIATE FOR INSTALLATION.

NOTES:

- 39A EXT RECEPTACLE DPLX 120VAC
- 265 CODES/STANDARDS-CSA/CMVSS
- 1B1 CODES/STANDARDS USA

FOR ELECTRICAL
TORQUE
SPECIFICATIONS
SEE DWG NO.
128783-01-000

FOR
ELECTRICAL
CALLOUTS
SEE DWG NO.
121339-01-000

DESCRIPTION:	1B1 265	
WIRING INSTL-BODY, 110V		
SHEET:	ITEM/PART NO:	REV
3 OF 6	000118423 / 32242401000	

8 7 6 5 4 3 2 1

D

D

C

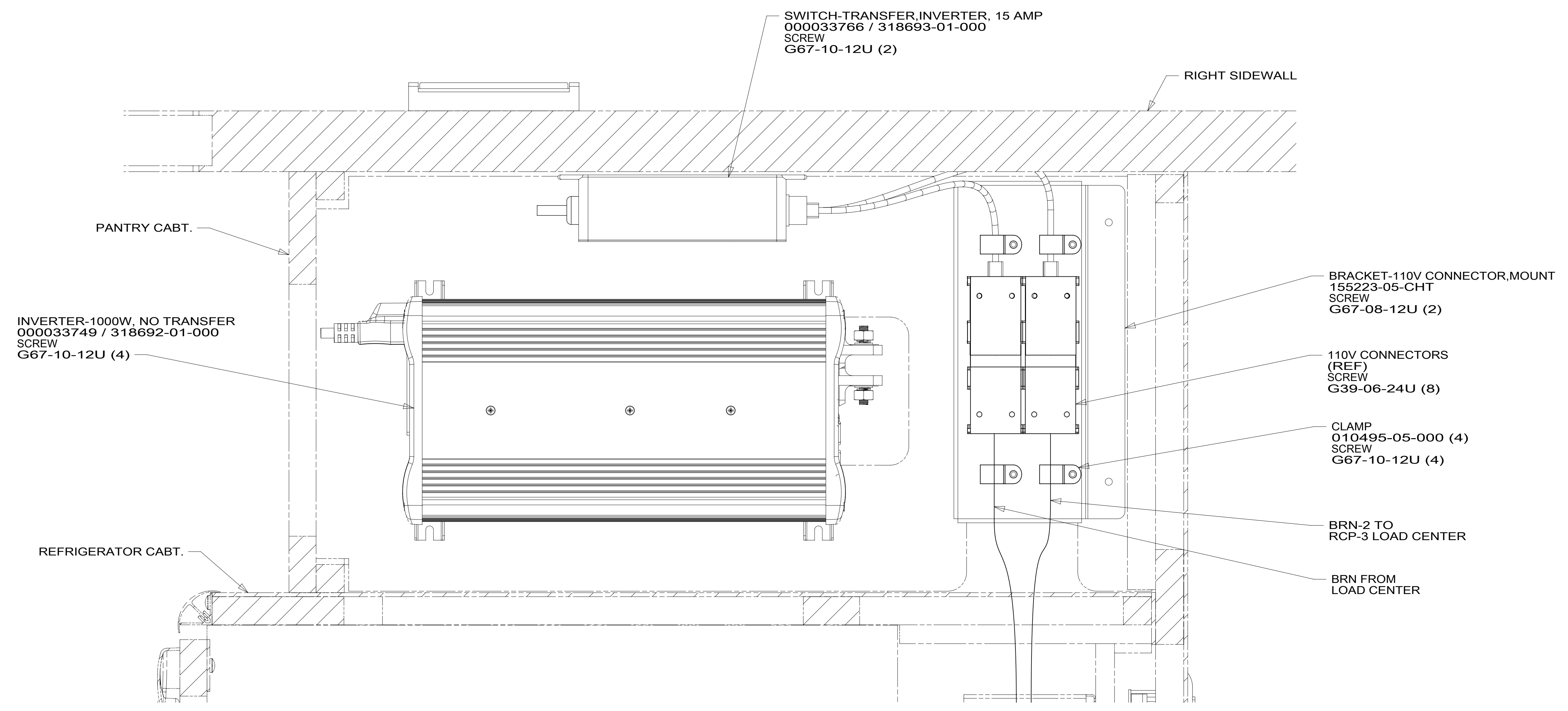
C

B

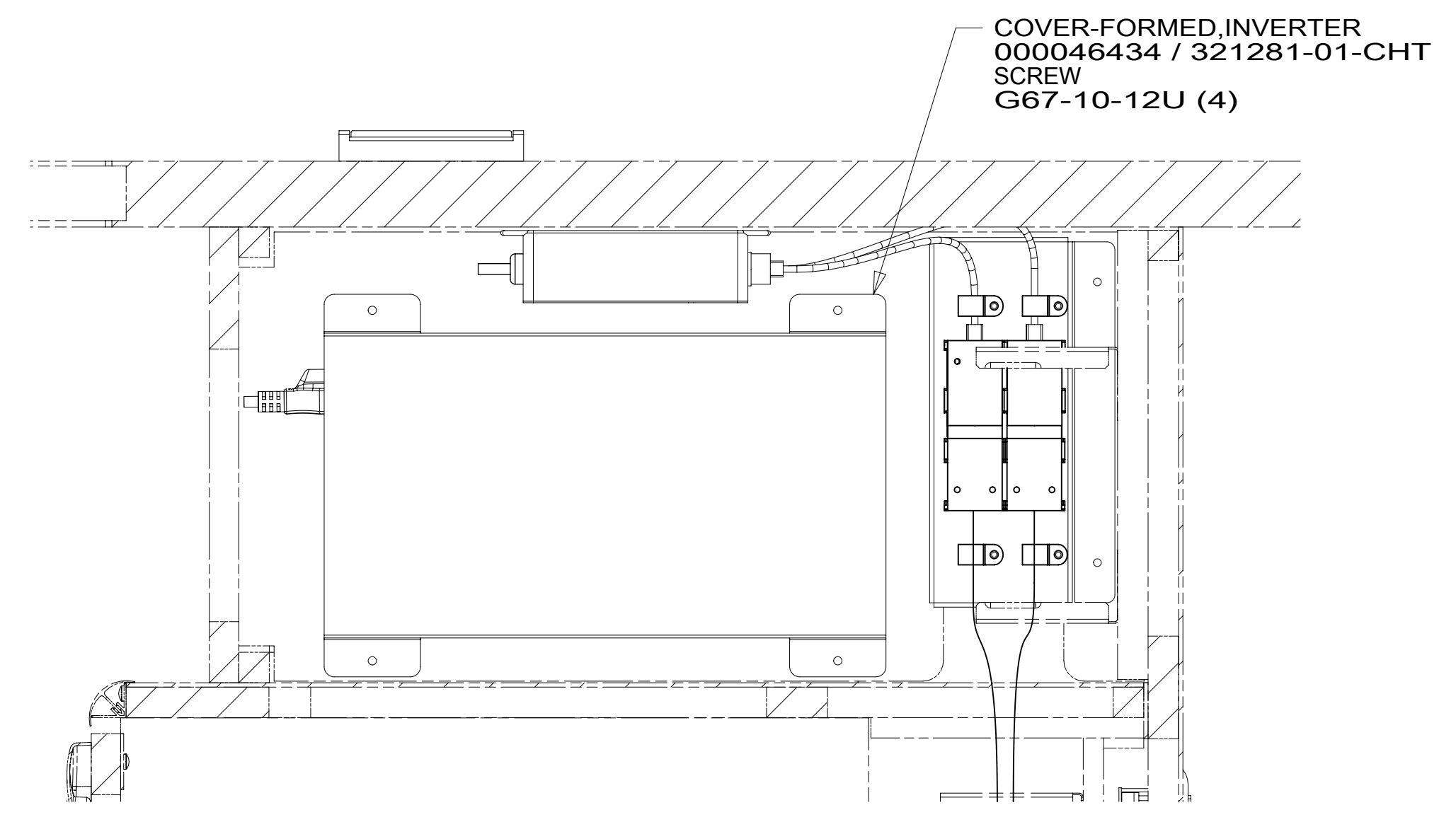
B

A

A



DETAIL DA
(COVER NOT SHOWN)



DETAIL DA

- 401 INVERTER-DC/AC, 1000 WATT
- 265 CODES/STANDARDS-CSA/CMVSS
- 1B1 CODES/STANDARDS USA

1B1 265 401

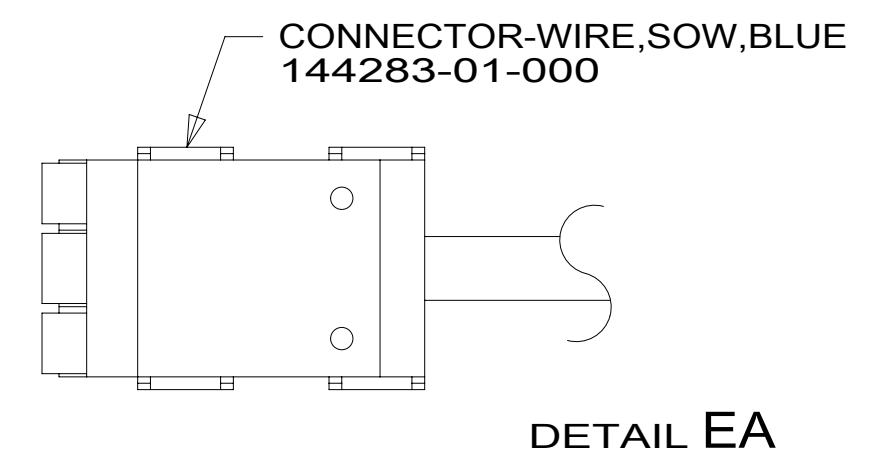
FOR ELECTRICAL TORQUE SPECIFICATIONS SEE DWG NO. 128783-01-000

FOR ELECTRICAL CALLOUTS SEE DWG NO. 121339-01-000

DESCRIPTION:		
WIRING INSTL-BODY, 110V		
SHEET:	ITEM/PART NO.:	REV:
4 OF 6	000118423 / 32242401000	

8 7 6 5 4 3 2 1 21-Nov-2017

RED	1B1	136135-07-040	
	265	136136-07-040	
BLK	1B1	136135-06-010	
	265	136136-06-010	
BRN	1B1	136131-03-016	2
	265	136134-03-016	2
BRN-2	1B1	136131-19-045	2
	265	136134-19-045	2
BLU	1B1	136131-02-065	
	265	136134-02-065	
MAIN	1B1	136137-01-040	
	265	136138-01-040	
BLK-2	1B1	136135-22-040	
	265	136136-22-040	
WHT	1B1	136135-09-027	
	265	136136-09-027	
THROW IN WIRE #1	1B1	136131-03-080	
	265	136134-03-080	
THROW IN WIRE #2	1B1	136131-02-024	
	265	136134-02-024	
THROW IN WIRE #3	1B1	136131-02-038	
	265	136134-02-038	
THROW IN WIRE #4	1B1	136131-02-045	
	265	136134-02-045	



2 SEE DETAIL EA FOR CONNECTOR INSTALLATION.
1. ALL GROUND WIRES TO BE COVERED WITH TUBING 8041-02-000.

NOTES:

FOR ELECTRICAL TORQUE SPECIFICATIONS SEE DWG NO. 128783-01-000

FOR ELECTRICAL CALLOUTS SEE DWG NO. 121339-01-000

265 CODES/STANDARDS-CSA/CMVSS
1B1 CODES/STANDARDS USA

1B1	265
DESCRIPTION: WIRING INSTL-BODY, 110V	
SHEET: 5 OF 6	ITEM/PART NO: 000118423 / 32242401000
REV 1 21-Nov-2017	

