

8

7

6

5



4

3

2

1

CABLE ASM-CHASSIS BATTERY (RED)	141415-37-030	
CABLE ASM-COACH BATTERY (YEL)	141415-52-007	
CABLE ASM-COACH BATTERY GND (BLK)	133567-12-007	
CABLE ASM-GENERATOR (GRN)	141415-42-039	
CABLE ASM-GENERATOR GND (BLK)	133566-12-005	
CABLE ASM-FRAME GND	133566-12-003	
CABLE ASM-INVERTER FUSE (ORG)	141415-62-007	
CABLE ASM-INVERTER (ORG)	141415-62-026	
CABLE ASM-INVERTER GND (BLK)	133566-12-030	
CABLE ASM-INVERTER CASE GND (GRN)	136145-05-022	

D

D

C

C

B

B

A

A

- ROUTING OF CABLE SHOWN IN WIRING INSTL-CHASSIS ONLY.
- BATTERY CABLES ARE NOT TO BE ROUTED OVER BATTERY FILL CAPS.
 - SEE WIRING INSTL-CHASSIS FOR ADDITIONAL INFORMATION.

NOTES:

FOR ELECTRICAL TORQUE SPECIFICATIONS SEE DWG NO. 128783-01-000

FOR ELECTRICAL CALLOUTS SEE DWG NO. 121339-01-000

- INVERTER-DC/AC, 1000 WATT
- CODES/STANDARDS-CSA/CMVSS
- CODES/STANDARDS USA

-

WINNEBAGO
COPYRIGHT 2016 WINNEBAGO INDUSTRIES, INC.

DSNR:		ALL DIMENSIONS ARE IN MILLIMETERS	
DFFR:			
UNSPECIFIED TOLERANCES:	MATERIAL:		
WHOLE DIM (X) :		3	
ONE-PLACE (X.X) :		1.5	
TWO-PLACE (X.XX) :		0.50	
ANGLE :		1°	
REFER TO ES0018 FOR FASTENER TIGHTENING GUIDELINES	WEIGHT: (LBS)	FIRST USED: 18 423T	
DESCRIPTION: BATTERY INSTL			
SHEET: 1 OF 2	ITEM/PART NO: 000118416 / 32242201000	REV:	

8

7

6

5

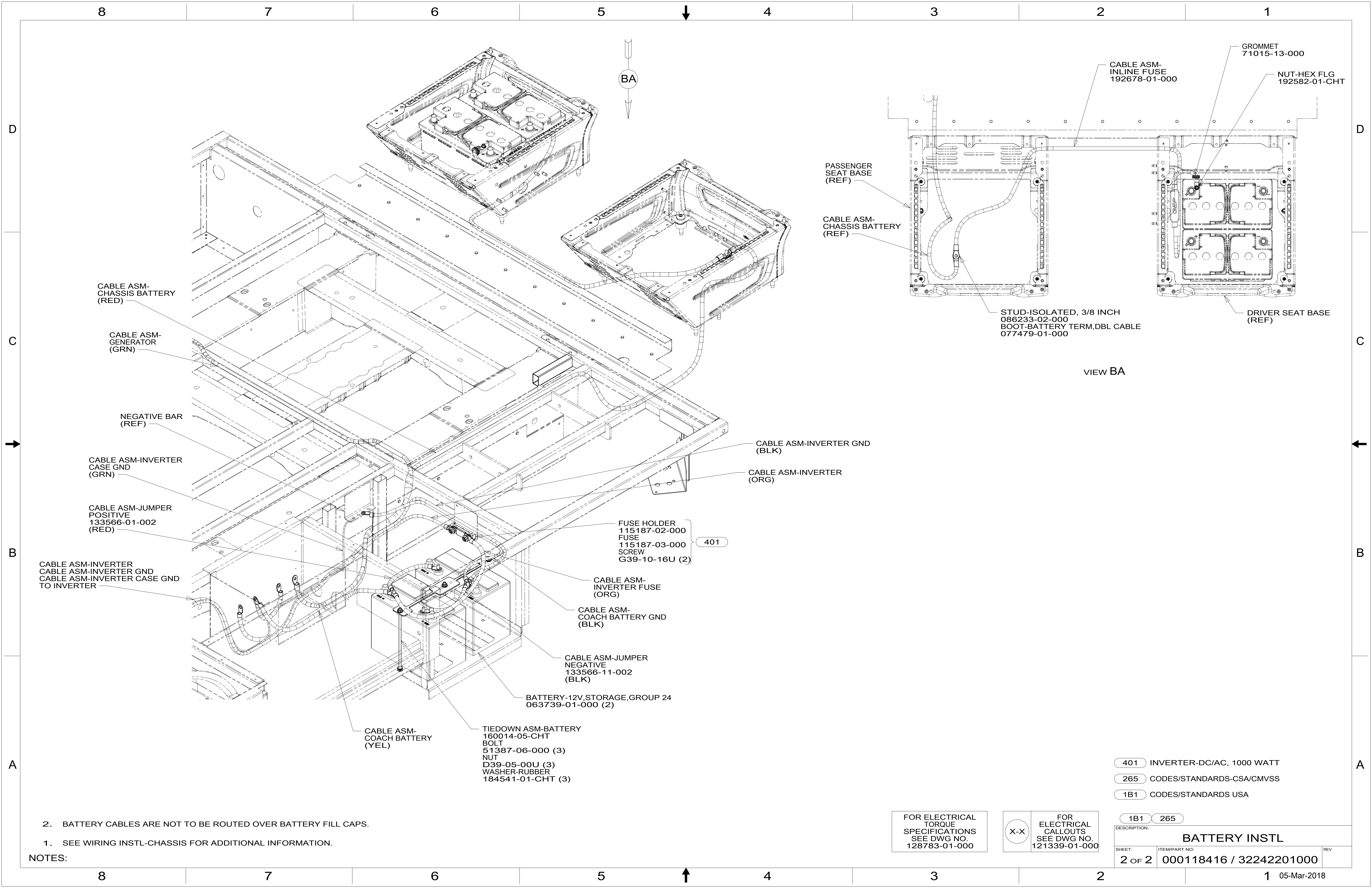


4

3

2

1 05-Mar-2018



8 7 6 5 4 3 2 1

BA

PASSENGER SEAT BASE (REF)

CABLE ASM-CHASSIS BATTERY (REF)

CABLE ASM-INLINE FUSE 192678-01-000

GROMMET 71015-13-000

NUT-HEX FLG 192582-01-CHT

STUD-ISOLATED, 3/8 INCH 086233-02-000
BOOT-BATTERY TERM, DBL CABLE 077479-01-000

DRIVER SEAT BASE (REF)

VIEW BA

CABLE ASM-CHASSIS BATTERY (RED)

CABLE ASM-GENERATOR (GRN)

NEGATIVE BAR (REF)

CABLE ASM-INVERTER CASE GND (GRN)

CABLE ASM-JUMPER POSITIVE 133566-01-002 (RED)

CABLE ASM-INVERTER CASE GND TO INVERTER

CABLE ASM-INVERTER GND (BLK)

CABLE ASM-INVERTER (ORG)

FUSE HOLDER 115187-02-000
FUSE 115187-03-000
SCREW G39-10-16U (2)

401

CABLE ASM-INVERTER FUSE (ORG)

CABLE ASM-COACH BATTERY GND (BLK)

CABLE ASM-JUMPER NEGATIVE 133566-11-002 (BLK)

BATTERY-12V, STORAGE, GROUP 24 063739-01-000 (2)

CABLE ASM-COACH BATTERY (YEL)

TIEDOWN ASM-BATTERY 160014-05-CHT
BOLT 51387-06-000 (3)
NUT D39-05-00U (3)
WASHER-RUBBER 184541-01-CHT (3)

401 INVERTER-DC/AC, 1000 WATT

265 CODES/STANDARDS-CSA/CMVSS

1B1 CODES/STANDARDS USA

2. BATTERY CABLES ARE NOT TO BE ROUTED OVER BATTERY FILL CAPS.

1. SEE WIRING INSTL-CHASSIS FOR ADDITIONAL INFORMATION.

NOTES:

FOR ELECTRICAL TORQUE SPECIFICATIONS SEE DWG NO. 128783-01-000

FOR ELECTRICAL CALLOUTS SEE DWG NO. 121339-01-000

1B1 265

DESCRIPTION:		
BATTERY INSTL		
SHEET:	ITEM/PART NO.:	REV:
2 OF 2	000118416 / 32242201000	

8 7 6 5 4 3 2 1 05-Mar-2018