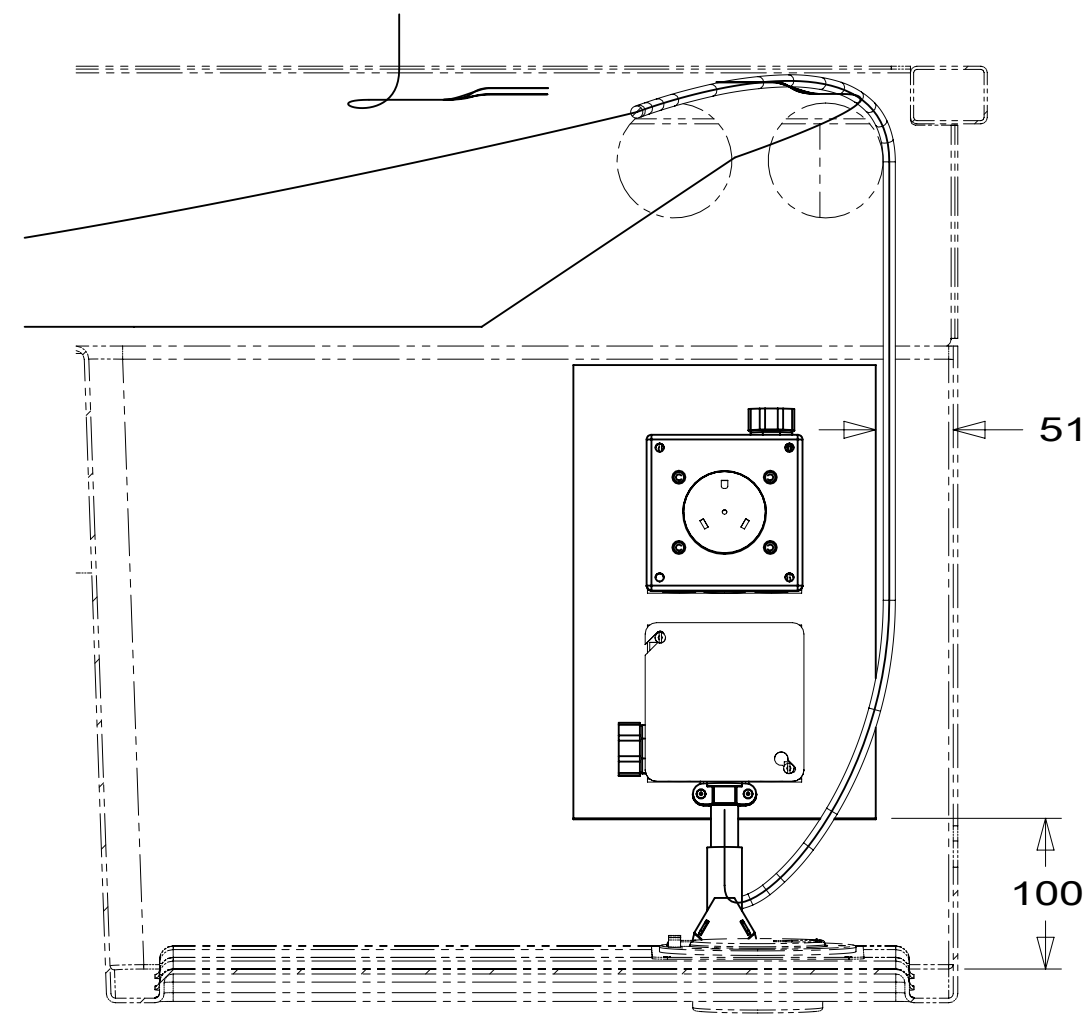


8 7 6 5 4 3 2 1



VIEW AA

CLAMP MAIN POWER TO UNDERSIDE OF FLOOR IN COMPARTMENT, THEN ROUTE WIRE ACROSS COACH ON THE FORWARD SIDE OF THE DRAINAGE TANK

POWER CORD BOX ASM  
000040479 / 319425-01-000

110V CONNECTORS  
(MOUNTED TO UNDERSIDE  
OF FLOOR)  
DETAIL ED

4600 DROP (10-GA)  
FROM LOAD CENTER  
TO POWER CORD BOX

BRN,BLK.THROW IN #1 (YEL-2),  
THROW IN #4 (BLU) TO LEFT SIDE.  
ROUTE WIRES ALONG WITH WATER  
LINES FORWARD THROUGH  
COMPARTMENT THEN ACROSS COACH  
UNDER THE DRAINAGE TANK. RUN WIRES  
THROUGH HOLE IN RISER AND TERMINATE  
AT MOUNTING PLATE.

(BLU)  
TO EXT FRIDGE

4. AT MINIMUM ALL WIRES TO BE SUPPORTED AND SECURED PER CODE REQUIREMENTS. USE CLAMP 10495 OR 10497 OR 083610 OR WIRE TIE 8343 OR 108046 AND SCREW G67-XX-XXX OR G56-XX-XXX AS APPROPRIATE FOR INSTALLATION.

3 CORD & CONNECTOR ARE PART OF WIRE ASM-CHASSIS.

2 WIRE ROUTES THROUGH FLOOR IN THIS AREA.

1. WIRES ROUTED UNDER FLOOR.

NOTES:

265 CODES/STANDARDS-CSA/CMVSS

1B1 CODES/STANDARDS USA

1B1 265



COPYRIGHT 2016 WINNEBAGO INDUSTRIES, INC.

DSNR:		ALL DIMENSIONS ARE IN MILLIMETERS	
DFFR:		MATERIAL:	
UNSPECIFIED TOLERANCES:			
WHOLE DIM (X)	: 3		
ONE-PLACE (X.X)	: 1.5		
TWO-PLACE (X.XX)	: 0.50		
ANGLE	: 1°		

REFER TO ES0018 FOR FASTENER TIGHTENING GUIDELINES

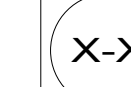
WEIGHT: (LBS) FIRST USED:  
**18 V31P**

**WIRING INSTL-BODY, 110V**

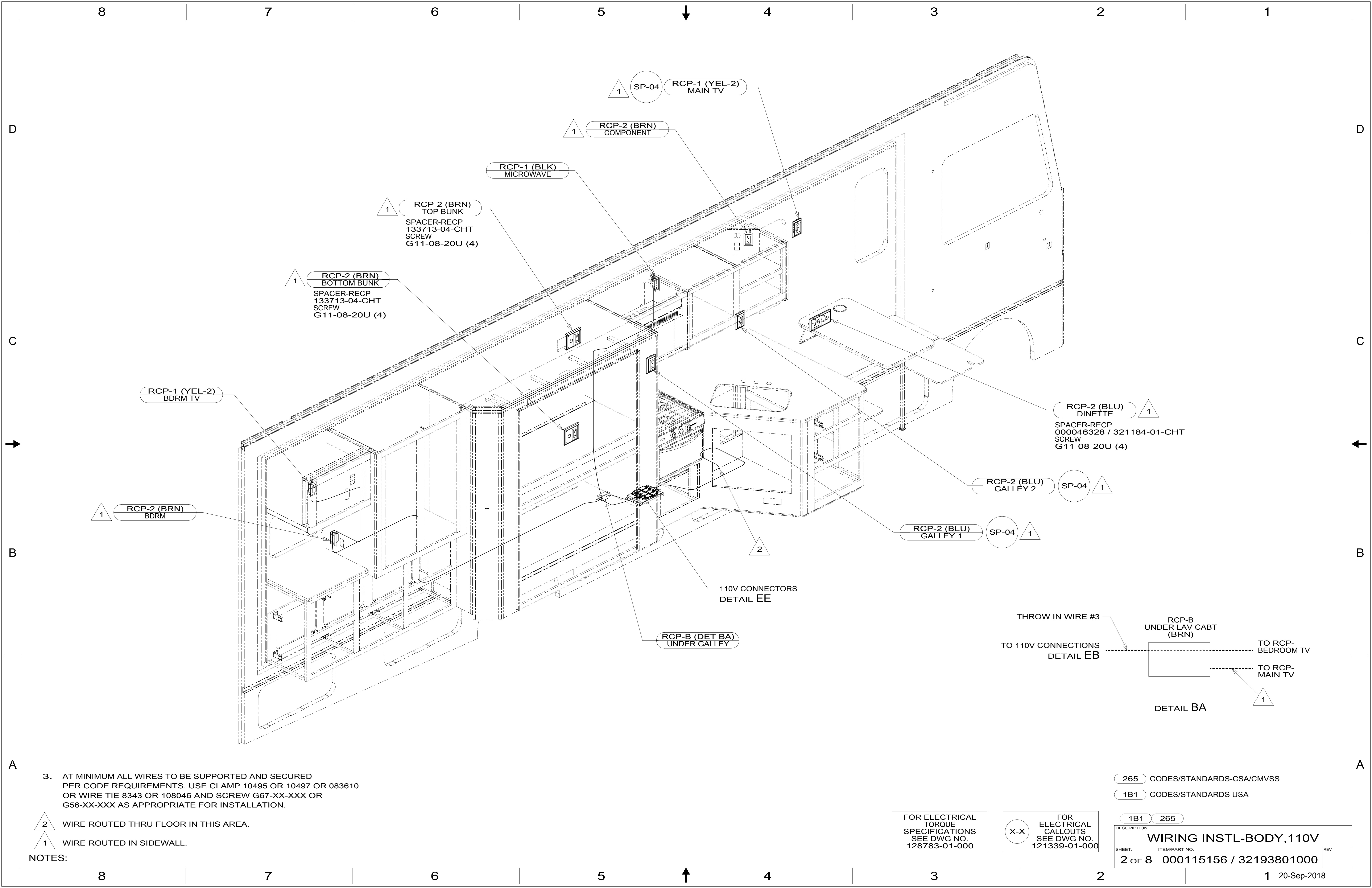
SHEET:	ITEM/PART NO.:	REV:
<b>1 OF 8</b>	<b>000115156 / 32193801000</b>	

FOR ELECTRICAL TORQUE SPECIFICATIONS SEE DWG NO. 128783-01-000

FOR ELECTRICAL CALLOUTS SEE DWG NO. 121339-01-000



8 7 6 5 4 3 2 1



3. AT MINIMUM ALL WIRES TO BE SUPPORTED AND SECURED PER CODE REQUIREMENTS. USE CLAMP 10495 OR 10497 OR 083610 OR WIRE TIE 8343 OR 108046 AND SCREW G67-XX-XXX OR G56-XX-XXX AS APPROPRIATE FOR INSTALLATION.

- 2 WIRE ROUTED THRU FLOOR IN THIS AREA.
- 1 WIRE ROUTED IN SIDEWALL.

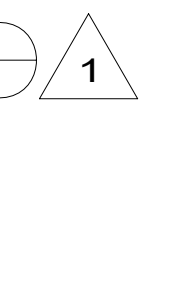
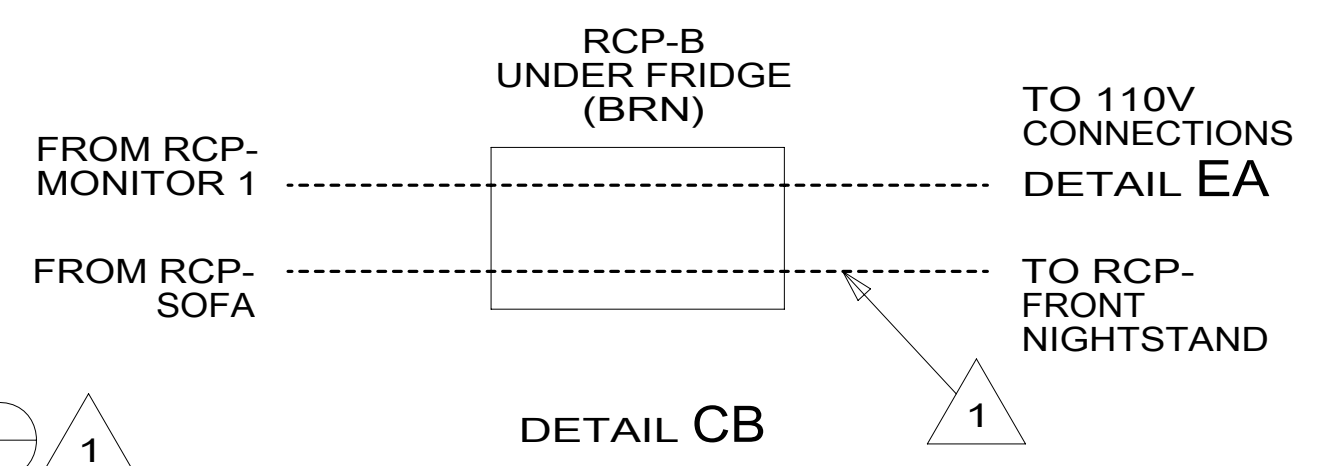
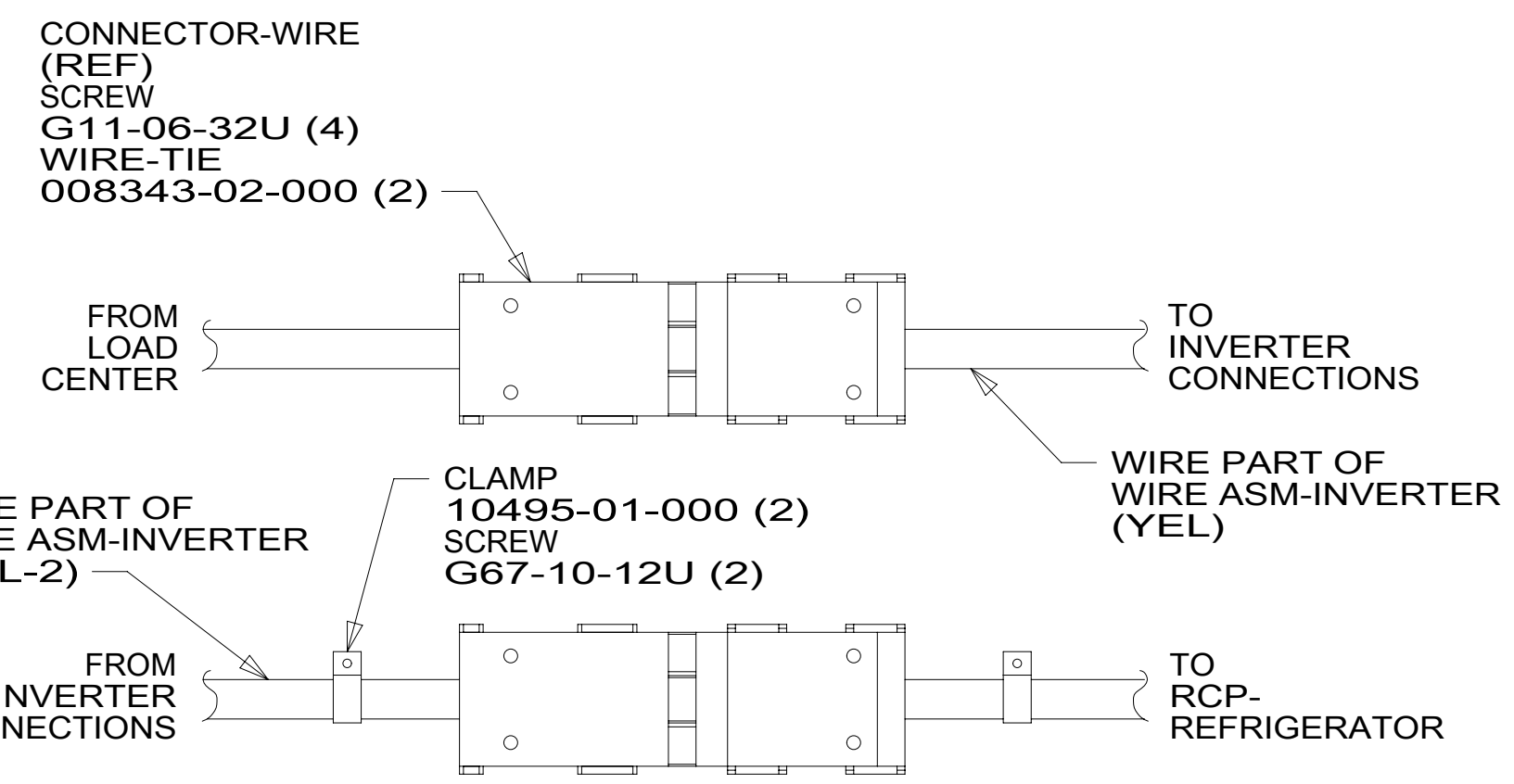
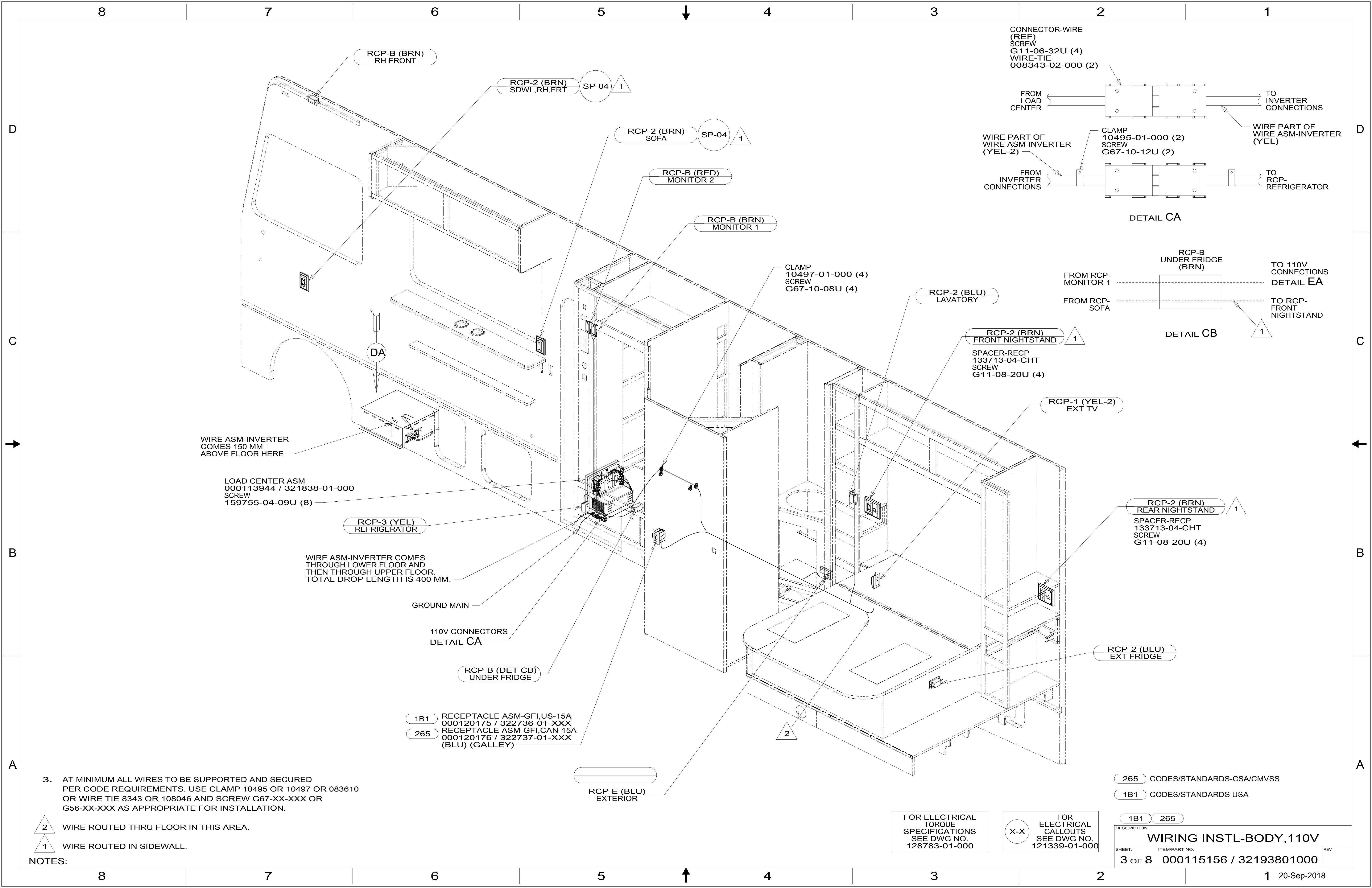
NOTES:

265 CODES/STANDARDS-CSA/CMVSS  
1B1 CODES/STANDARDS USA

FOR ELECTRICAL TORQUE SPECIFICATIONS SEE DWG NO. 128783-01-000

FOR ELECTRICAL CALLOUTS SEE DWG NO. 121339-01-000

<span style="border: 1px solid black; border-radius: 50%; padding: 2px;">1B1</span> <span style="border: 1px solid black; border-radius: 50%; padding: 2px;">265</span>	
<b>DESCRIPTION:</b> <b>WIRING INSTL-BODY, 110V</b>	
SHEET:	ITEM/PART NO.:
2 OF 8	000115156 / 32193801000
REV	REV



WIRE ASM-INVERTER COMES 150 MM ABOVE FLOOR HERE

LOAD CENTER ASM  
000113944 / 321838-01-000  
SCREW  
159755-04-09U (8)

WIRE ASM-INVERTER COMES THROUGH LOWER FLOOR AND THEN THROUGH UPPER FLOOR. TOTAL DROP LENGTH IS 400 MM.

GROUND MAIN


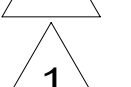
110V CONNECTORS  
DETAIL CA

RCP-B (DET CB)  
UNDER FRIDGE

1B1 RECEPTACLE ASM-GFI,US-15A  
000120175 / 322736-01-XXX  
265 RECEPTACLE ASM-GFI,CAN-15A  
000120176 / 322737-01-XXX  
(BLU) (GALLEY)

RCP-E (BLU)  
EXTERIOR

3. AT MINIMUM ALL WIRES TO BE SUPPORTED AND SECURED PER CODE REQUIREMENTS. USE CLAMP 10495 OR 10497 OR 083610 OR WIRE TIE 8343 OR 108046 AND SCREW G67-XX-XXX OR G56-XX-XXX AS APPROPRIATE FOR INSTALLATION.

-  WIRE ROUTED THRU FLOOR IN THIS AREA.
-  WIRE ROUTED IN SIDEWALL.

FOR ELECTRICAL TORQUE SPECIFICATIONS SEE DWG NO. 128783-01-000

FOR ELECTRICAL CALLOUTS SEE DWG NO. 121339-01-000

265 CODES/STANDARDS-CSA/CMVSS  
1B1 CODES/STANDARDS USA

DESCRIPTION:	
<b>WIRING INSTL-BODY, 110V</b>	
SHEET:	ITEM/PART NO. REV
3 OF 8	000115156 / 32193801000

COVER ASM-INVERTER  
000046432 / 321279-01-CHT  
SCREW  
G67-08-12U (4)

FLOOR EDGE

398

ENTRANCE  
STEP

877

VIEW DA

SWITCH-TRANSFER, INVERTER, 15 AMP  
000033766 / 318693-01-000  
SCREW  
G67-10-12U (2)

DETAIL DB

FLOOR EDGE

YEL, YEL-2  
PART OF WIRE ASM-  
INVERTER, 110V

610

426

941

919

ENTRANCE  
STEP

CLAMP  
10497-01-000  
SCREW  
G67-10-12U

INVERTER-1000W, NO TRANSFER  
000033749 / 318692-01-000  
SCREW  
G67-10-12U (4)

VIEW DA  
(INVERTER COVER  
NOT SHOWN)

WIRE PART OF  
WIRE ASM-INVERTER  
(YEL-2)

CONNECTORS PART  
OF WIRE ASM

TO CONNECTION  
BY LOAD CENTER

WIRE FROM SWITCH  
(LOAD)

WIRE PART OF  
WIRE ASM-INVERTER  
(YEL)

FROM CONNECTION  
BY LOAD CENTER

WIRE FROM SWITCH  
(UTILITY)

DETAIL DB

265 CODES/STANDARDS-CSA/CMVSS

1B1 CODES/STANDARDS USA

1B1 265

FOR ELECTRICAL  
TORQUE  
SPECIFICATIONS  
SEE DWG NO.  
128783-01-000

X-X

FOR  
ELECTRICAL  
CALLOUTS  
SEE DWG NO.  
121339-01-000

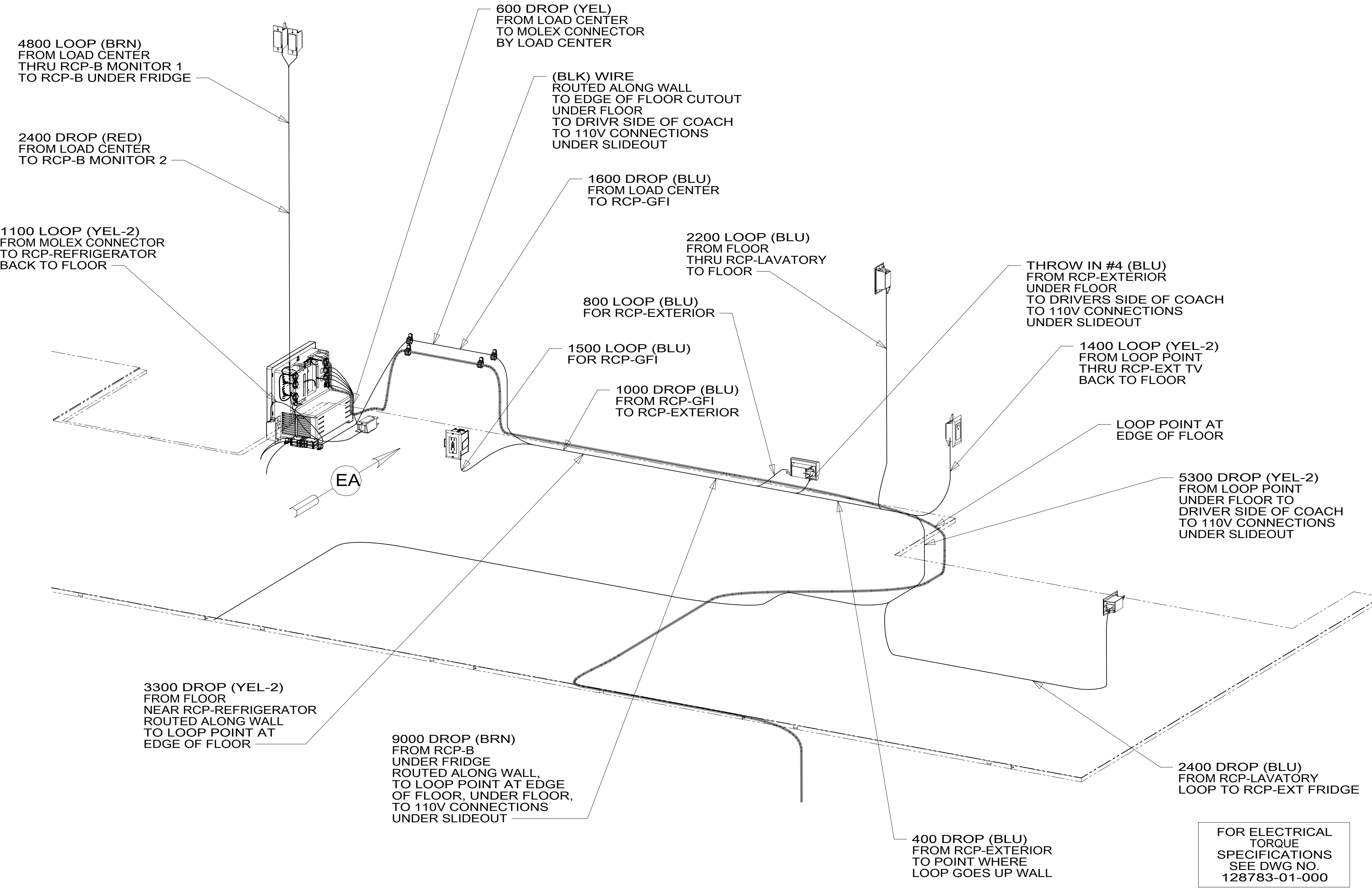
DESCRIPTION:  
**WIRING INSTL-BODY, 110V**

SHEET: 4 OF 8 ITEM/PART NO: 000115156 / 32193801000 REV

1 20-Sep-2018



VIEW EA



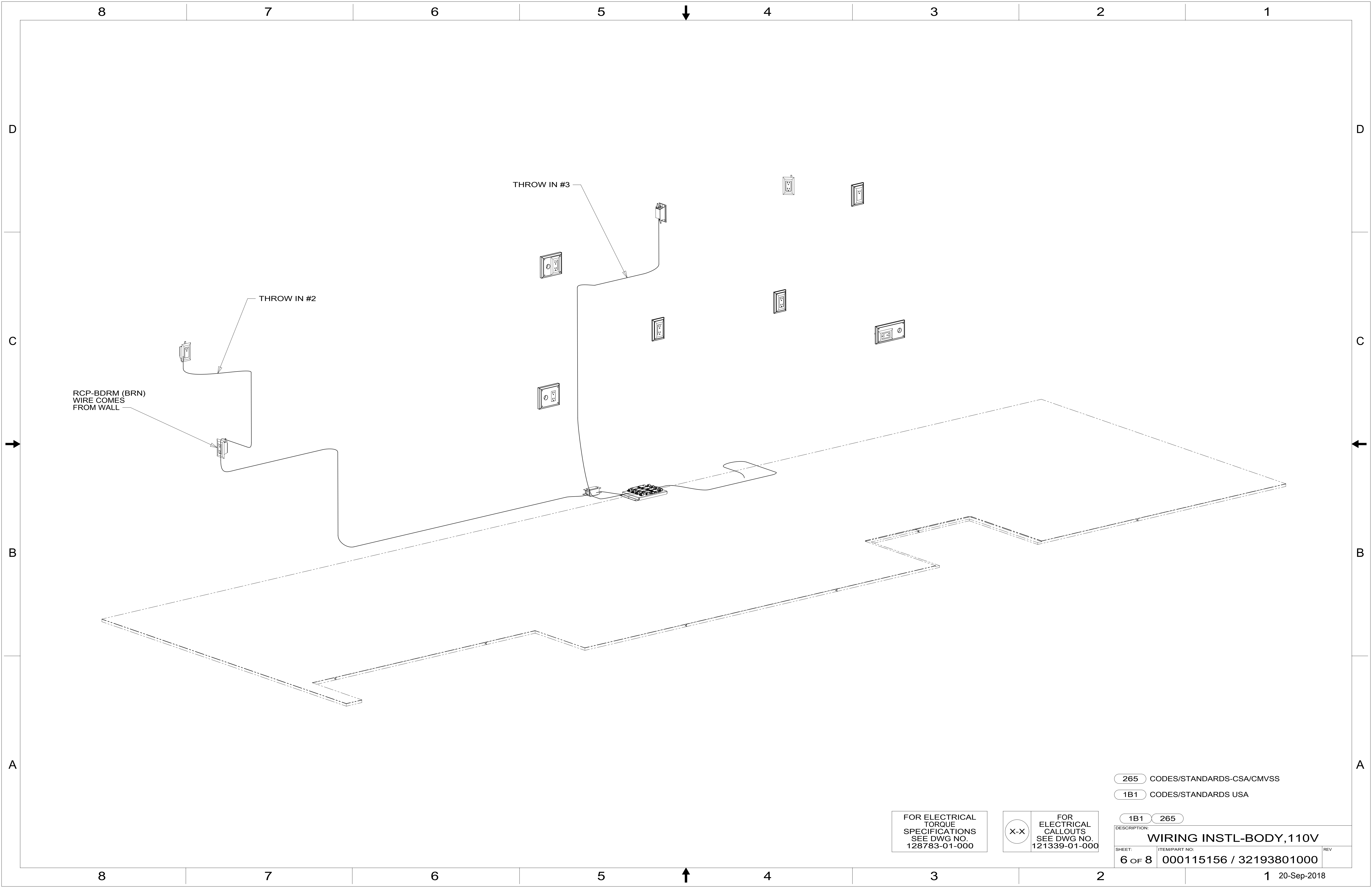
- 265 CODES/STANDARDS-CSA/CMVSS
- 1B1 CODES/STANDARDS USA

FOR ELECTRICAL TORQUE SPECIFICATIONS SEE DWG NO. 128783-01-000

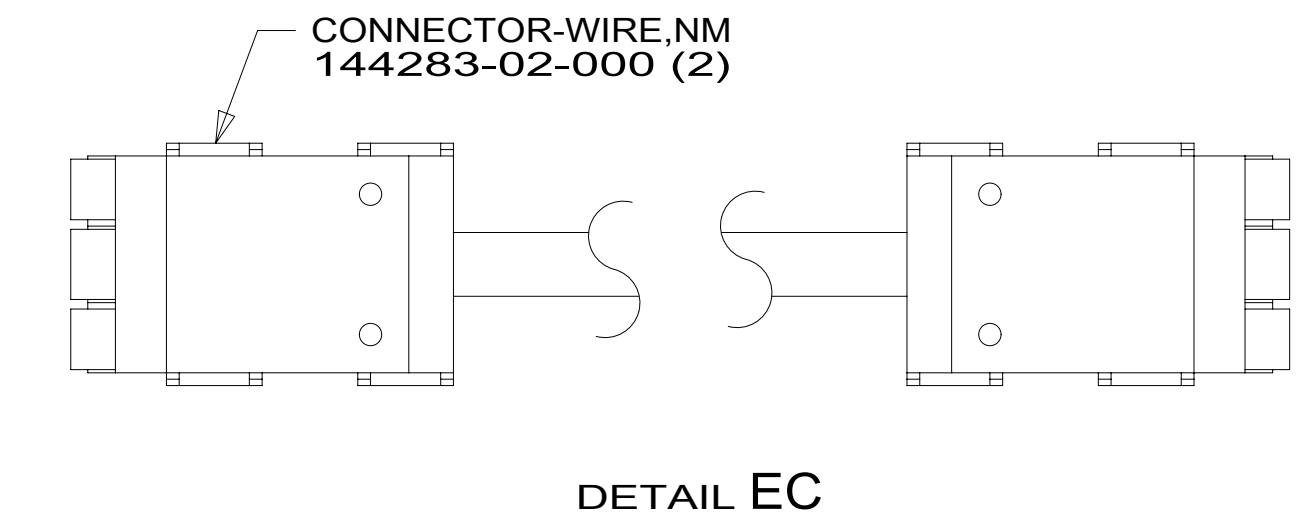
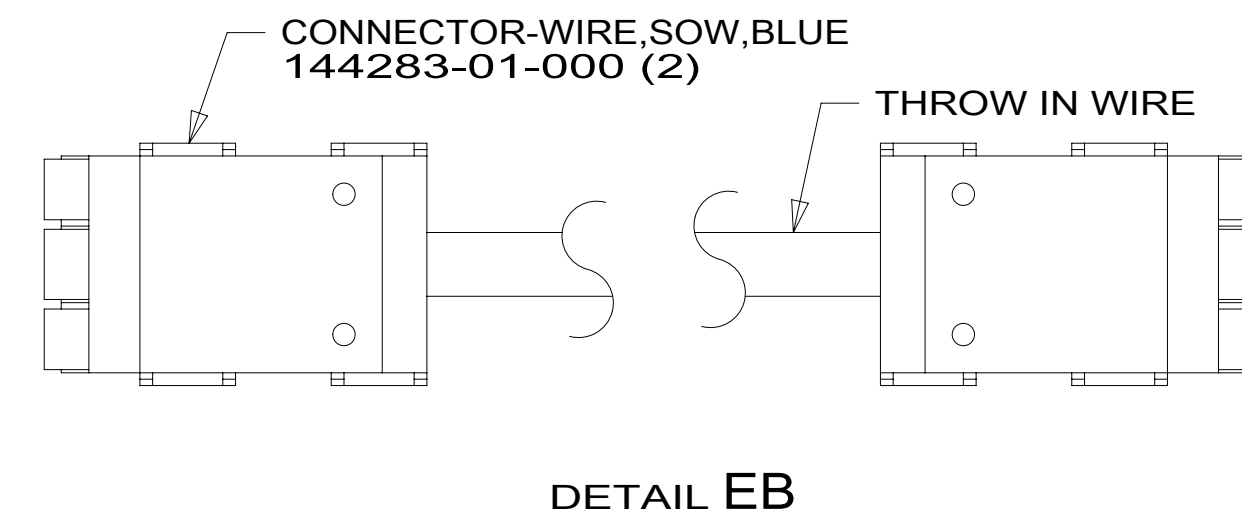
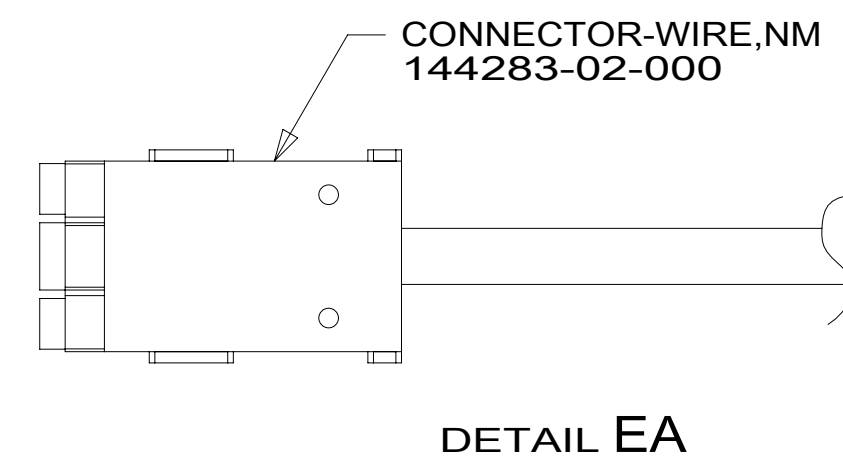
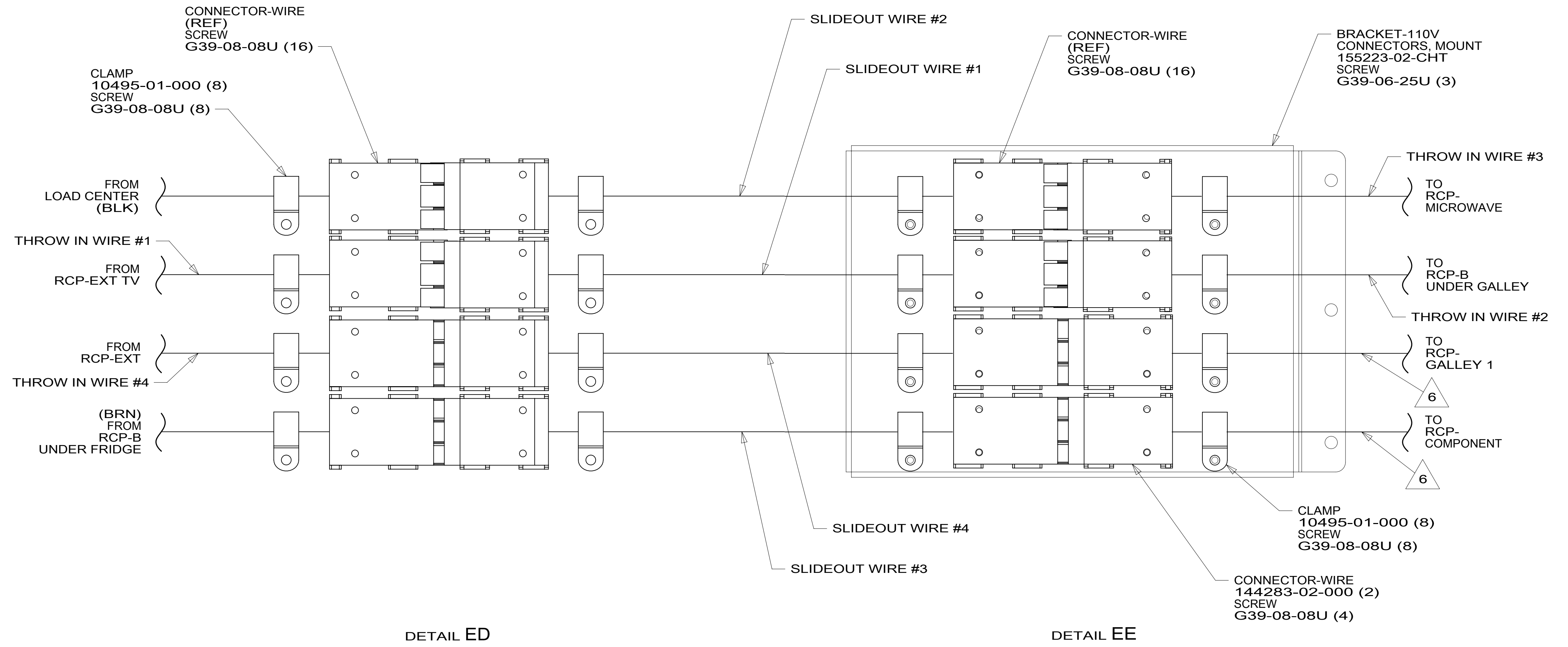
X-X

FOR ELECTRICAL CALLOUTS SEE DWG NO. 121339-01-000

DESCRIPTION:	1B1 265	
<b>WIRING INSTL-BODY, 110V</b>		
SHEET:	ITEM/PART NO.:	REV:
5 OF 8	000115156 / 32193801000	



RED	1B1	136135-07-030	
	265	136136-07-030	
YEL	1B1	136131-05-012	3
	265	136134-05-012	3
BRN	1B1	136131-03-144	3
	265	136134-03-144	3
BLU	1B1	136131-02-106	
	265	136134-02-106	
MAIN	1B1	136137-01-084	7
	265	136138-01-084	7
BLK	1B1	136131-06-090	3
	265	136134-06-090	3
THROW IN WIRE #1	1B1	136131-13-112	5
	265	136134-13-112	5
THROW IN WIRE #2	1B1	136131-13-061	3
	265	136134-13-061	3
THROW IN WIRE #3	1B1	136131-06-031	3
	265	136134-06-031	3
THROW IN WIRE #4	1B1	136131-02-064	3
	265	136134-02-064	3
GROUND MAIN		178545-01-015	8
SLIDEOUT #1		136151-13-024	4
SLIDEOUT #2		136151-06-024	4
SLIDEOUT #3		136151-03-024	4
SLIDEOUT #4		136151-02-024	4
WIRE ASM-INVERTER	1B1	000118099 / 322321-01-000	
	265	000154180 / 326099-01-000	



- NOTES:
- 7 ATTACH ONE END OF MAIN TO LOAD CENTER. COVER ONE END OF MAIN CABLE ASM WITH 2500 MM OF CONDUIT 091234-02-000. SECURE WITH TAPE 8363-01-000.
  - 6 WIRE ROUTED IN SIDEWALL.
  - 5 SEE DETAIL EC FOR CONNECTOR INSTALLATION.
  - 4 SEE DETAIL EB FOR CONNECTOR INSTALLATION.
  - 3 SEE DETAIL EA FOR CONNECTOR INSTALLATION.
  - 2. SECURE WIRES TO BACKSIDE OF LOAD CENTER WITH WIRE TIE 116673-01-000.
  - 1. ALL GROUNDS WIRES TO BE COVERED WITH TUBING 8041-02-000.

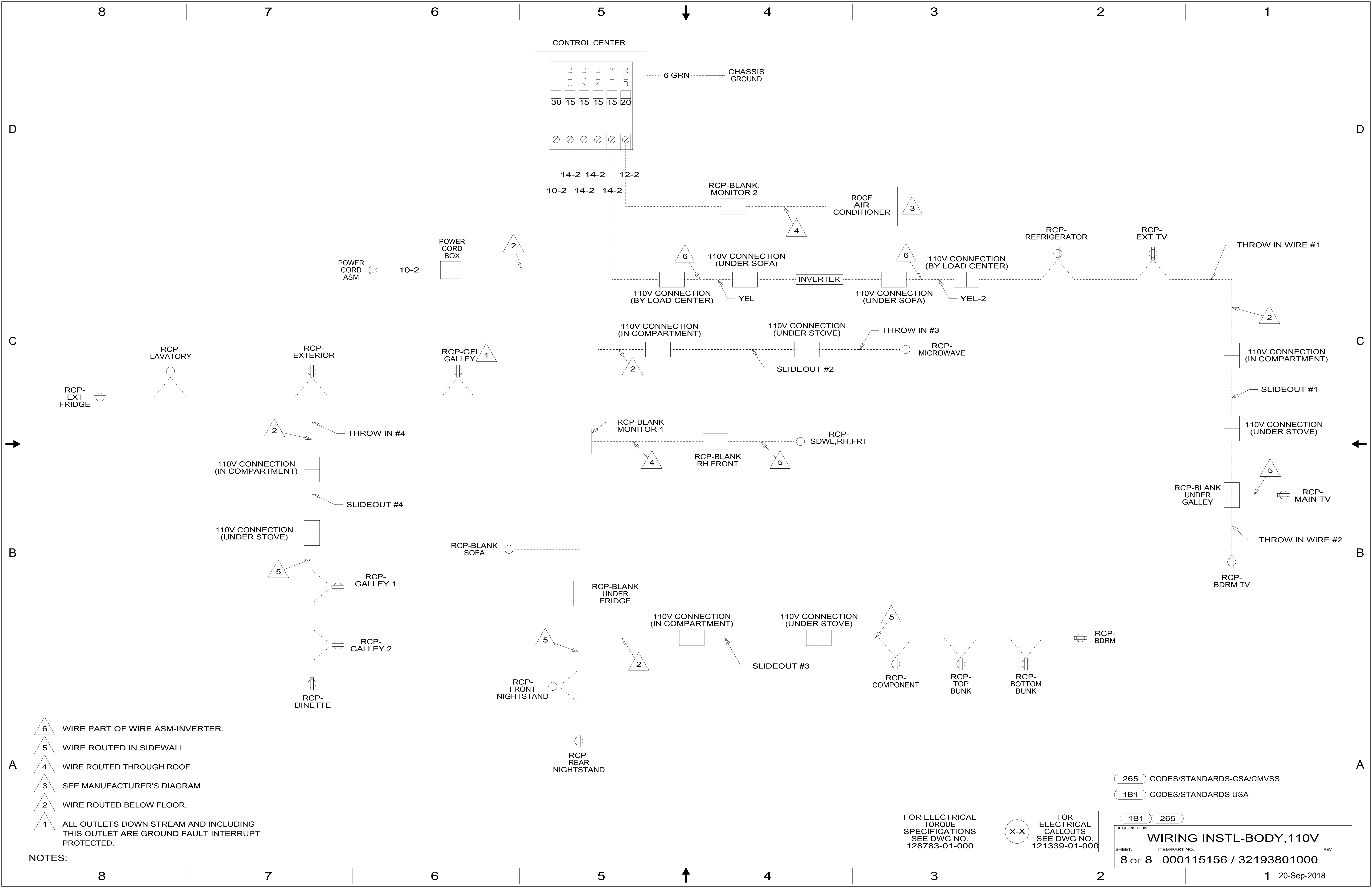
8 SEND WIRE LOOSE WITH ASSEMBLED CABINET TO BE INSTALLED ON THE LINE.

FOR ELECTRICAL TORQUE SPECIFICATIONS SEE DWG NO. 128783-01-000

FOR ELECTRICAL CALLOUTS SEE DWG NO. 121339-01-000

265 CODES/STANDARDS-CSA/CMVSS  
1B1 CODES/STANDARDS USA

1B1	265
DESCRIPTION: <b>WIRING INSTL-BODY, 110V</b>	
SHEET: 7 OF 8	ITEM/PART NO: 000115156 / 32193801000
REV	



- NOTES:
- 6 WIRE PART OF WIRE ASM-INVERTER.
  - 5 WIRE ROUTED IN SIDEWALL.
  - 4 WIRE ROUTED THROUGH ROOF.
  - 3 SEE MANUFACTURER'S DIAGRAM.
  - 2 WIRE ROUTED BELOW FLOOR.
  - 1 ALL OUTLETS DOWN STREAM AND INCLUDING THIS OUTLET ARE GROUND FAULT INTERRUPT PROTECTED.

FOR ELECTRICAL TORQUE SPECIFICATIONS SEE DWG NO. 128783-01-000

FOR ELECTRICAL CALLOUTS SEE DWG NO. 121339-01-000

- 265 CODES/STANDARDS-CSA/CMVSS
- 1B1 CODES/STANDARDS USA

DESCRIPTION: <b>WIRING INSTL-BODY, 110V</b>		
SHEET: 8 OF 8	ITEM/PART NO: 000115156 / 32193801000	REV
1 20-Sep-2018		