

- 6 WIRES MARKED WITH RED TAPE.
- 5 WIRES MARKED WITH ORG TAPE.
- 4 WIRES MARKED WITH BLU TAPE.
- 3 SEE DETAIL EA FOR CONNECTION TO SENSOR PROBES.
- 2 WIRE PASSES THROUGH FLOOR IN THIS AREA.

1. AT MINIMUM ALL WIRES TO BE SUPPORTED AND SECURED PER CODE REQUIREMENTS. USE CLAMP 10495 OR 10497 OR 083610 OR WIRE TIE 8343 OR 108046 AND SCREW G67-XX-XXX OR G56-XX-XXX AS APPROPRIATE FOR INSTALLATION.

NOTES:

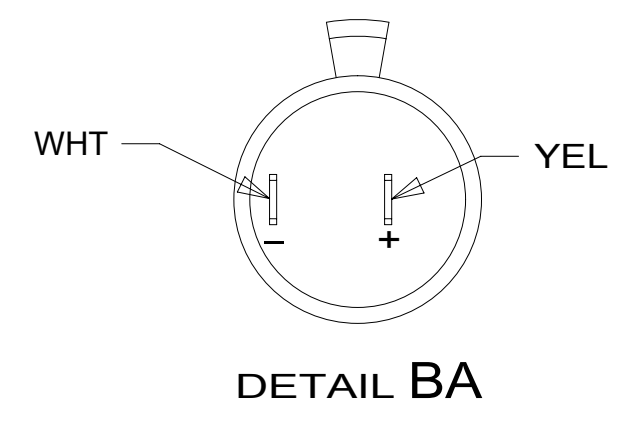
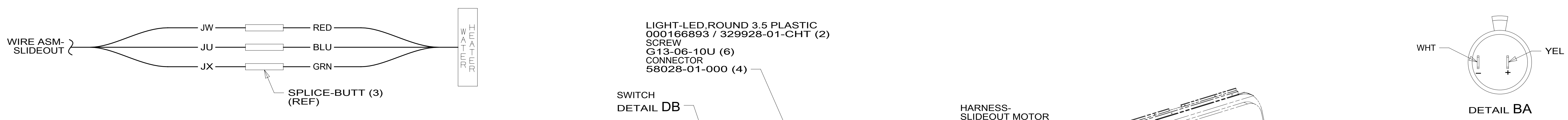
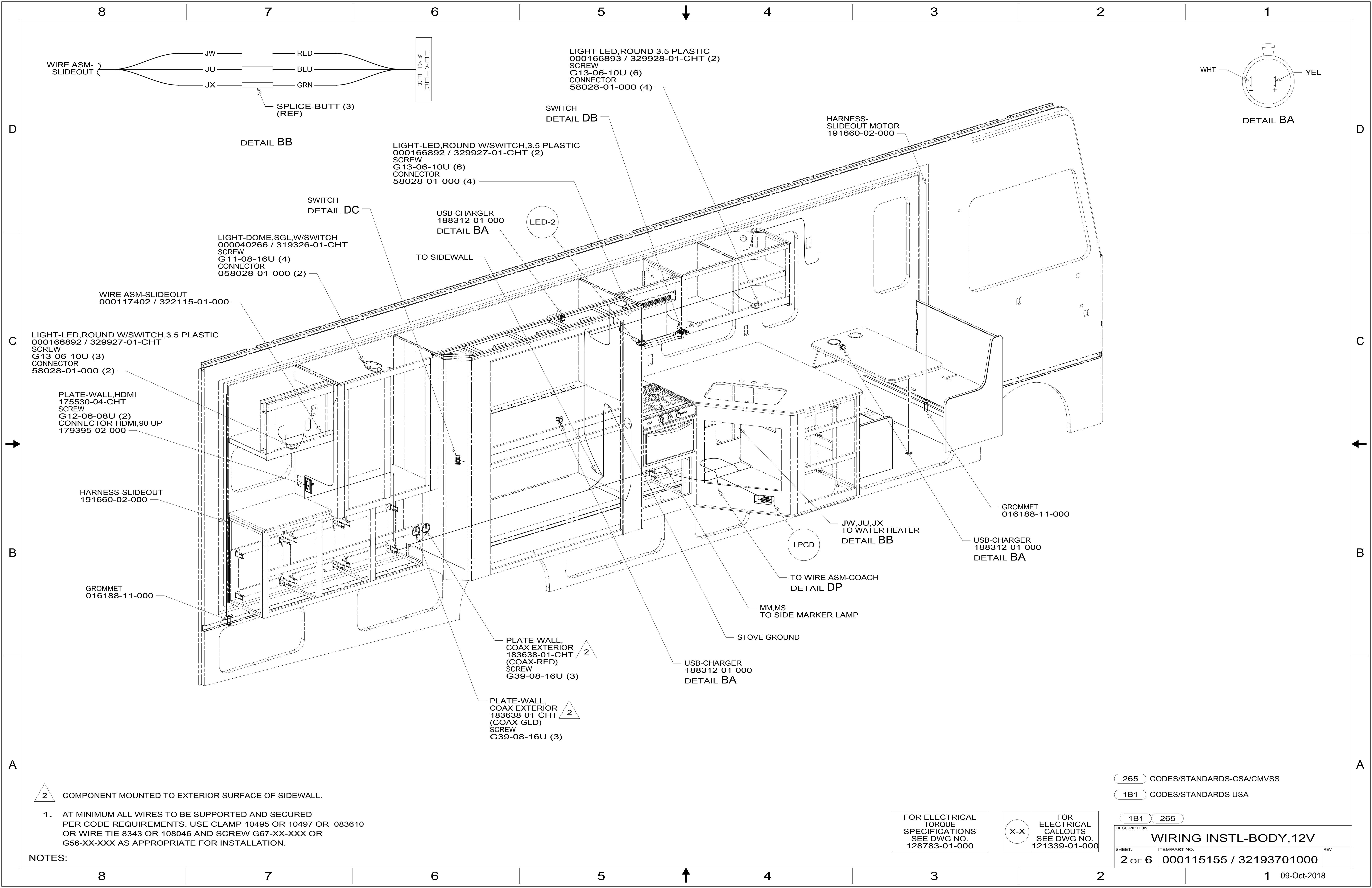
FOR ELECTRICAL TORQUE SPECIFICATIONS SEE DWG NO. 128783-01-000

FOR ELECTRICAL CALLOUTS SEE DWG NO. 121339-01-000

- 265 CODES/STANDARDS-CSA/CMVSS
- 1B1 CODES/STANDARDS USA
- 1B1 265

WINNEBAGO
COPYRIGHT 2016 WINNEBAGO INDUSTRIES, INC.

| | | |
|--|---|-------------------------------|
| DSNR: | ALL DIMENSIONS ARE IN MILLIMETERS | |
| DFFR: | MATERIAL: | |
| UNSPECIFIED TOLERANCES: | | |
| WHOLE DIM (X) : | 3 | |
| ONE-PLACE (X.X) : | 1.5 | |
| TWO-PLACE (X.XX) : | 0.50 | |
| ANGLE : | 1° | |
| REFER TO ES0018 FOR FASTENER TIGHTENING GUIDELINES | WEIGHT: (LBS) | FIRST USED: 18 V31P |
| DESCRIPTION: WIRING INSTL-BODY, 12V | | |
| SHEET: 1 OF 6 | ITEM/PART NO: 000115155 / 32193701000 | REV: |
| REF: | | 1 09-Oct-2018 |



D
C
B
A

D
C
B
A

A

A

2 COMPONENT MOUNTED TO EXTERIOR SURFACE OF SIDEWALL.

1. AT MINIMUM ALL WIRES TO BE SUPPORTED AND SECURED PER CODE REQUIREMENTS. USE CLAMP 10495 OR 10497 OR 083610 OR WIRE TIE 8343 OR 108046 AND SCREW G67-XX-XXX OR G56-XX-XXX AS APPROPRIATE FOR INSTALLATION.

NOTES:

265 CODES/STANDARDS-CSA/CMVSS

1B1 CODES/STANDARDS USA

1B1 265

FOR ELECTRICAL TORQUE SPECIFICATIONS SEE DWG NO. 128783-01-000

FOR ELECTRICAL CALLOUTS SEE DWG NO. 121339-01-000

DESCRIPTION:
WIRING INSTL-BODY, 12V

SHEET: 2 OF 6 ITEM/PART NO.: 000115155 / 32193701000 REV

8

7

6

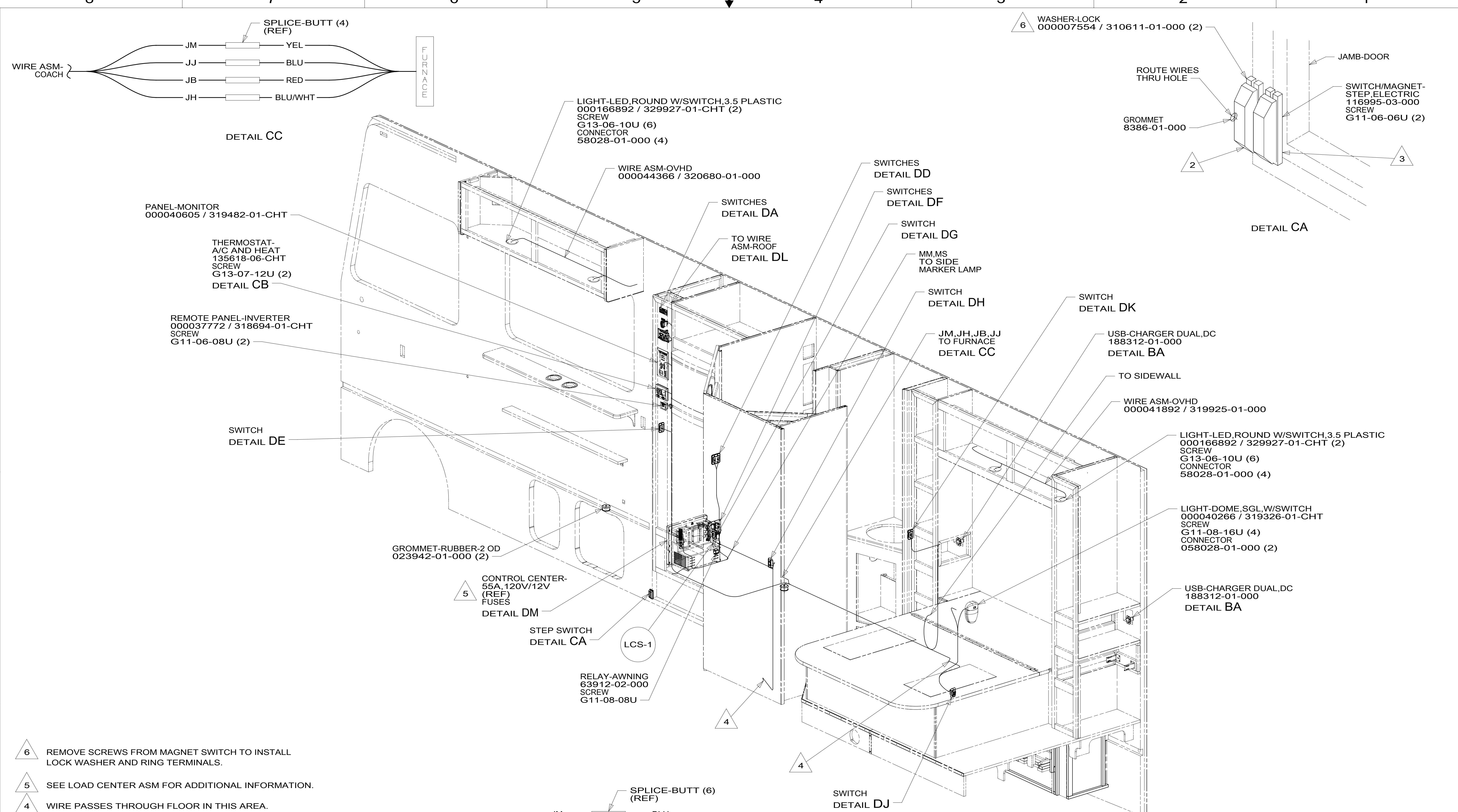
5

4

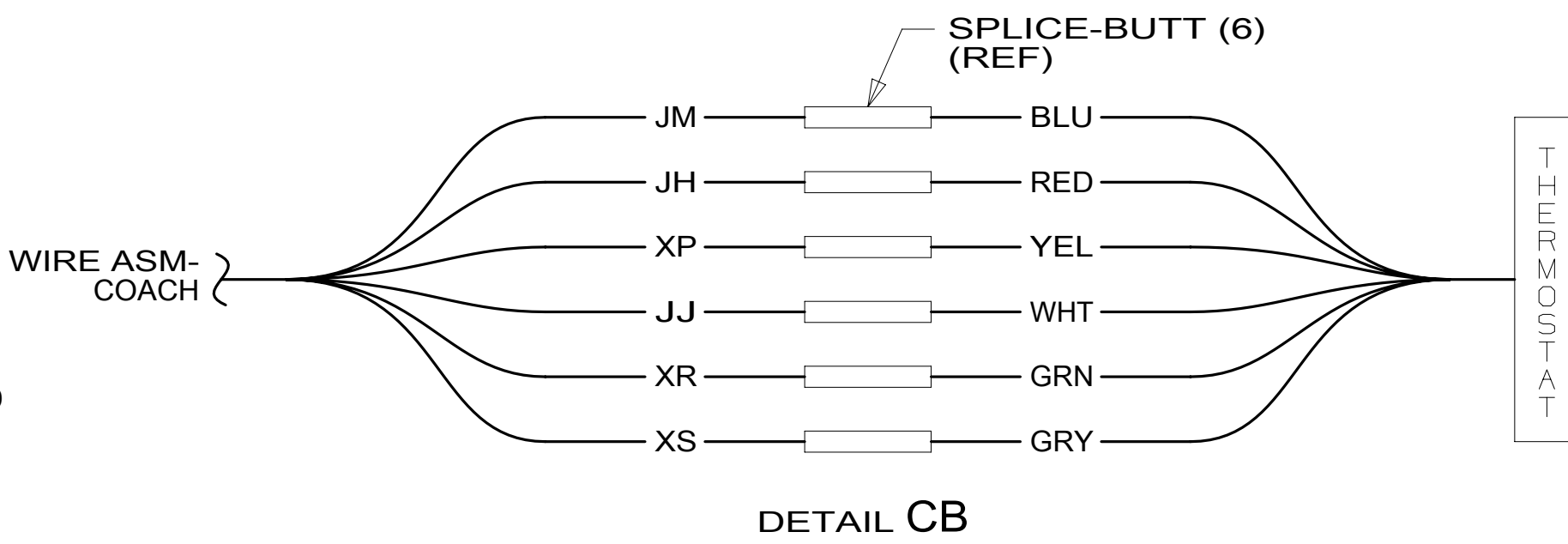
3

2

1 09-Oct-2018



- 6 REMOVE SCREWS FROM MAGNET SWITCH TO INSTALL LOCK WASHER AND RING TERMINALS.
- 5 SEE LOAD CENTER ASM FOR ADDITIONAL INFORMATION.
- 4 WIRE PASSES THROUGH FLOOR IN THIS AREA.
- 3 MOUNT MAGNET TO SCREEN DOOR FRAME, MOUNT WITH MAGNET TOWARD SWITCH.
- 2 MOUNT SWITCH TO DOOR JAMB WITH TAPE 076322-21-000.
1. AT MINIMUM ALL WIRES TO BE SUPPORTED AND SECURED PER CODE REQUIREMENTS. USE CLAMP 10495 OR 10497 OR 083610 OR WIRE TIE 8343 OR 108046 AND SCREW G67-XX-XXX OR G56-XX-XXX AS APPROPRIATE FOR INSTALLATION.



FOR ELECTRICAL TORQUE SPECIFICATIONS SEE DWG NO. 128783-01-000

FOR ELECTRICAL CALLOUTS SEE DWG NO. 121339-01-000

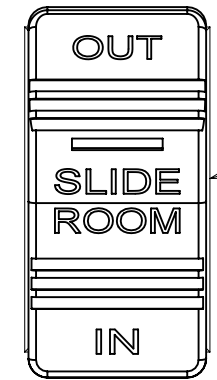
| | |
|---|--|
| 265 | CODES/STANDARDS-CSA/CMVSS |
| 1B1 | CODES/STANDARDS USA |
| 1B1 | 265 |
| DESCRIPTION: WIRING INSTL-BODY, 12V | |
| SHEET: 3 OF 6 | ITEM/PART NO: 000115155 / 32193701000 |
| REV 09-Oct-2018 | |

WARNING
 CRUSH HAZARD. Keep people and objects clear of the inside and outside of the slideout room when operating. Failure to comply could result in death or serious injury.

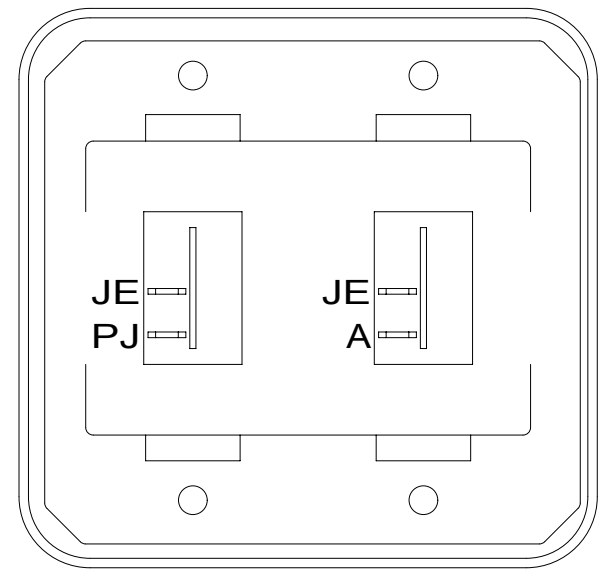
LABEL-WARNING,SLIDEOUT
 116549-02-000

DRIVER'S
 SIDE FRONT

LABEL-SLIDEOUT,
 DRIVER,FRONT
 163992-01-CHT

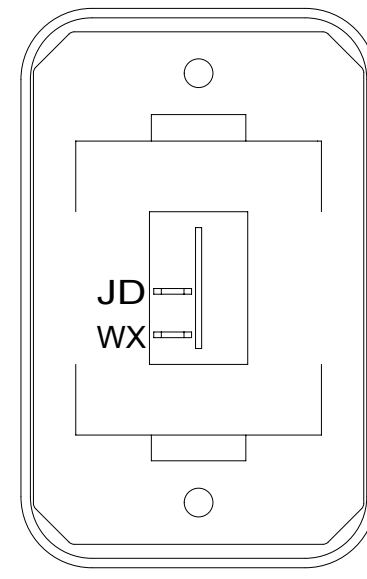


SWITCH
 108357-18-000
 ACTUATOR
 108356-31-CHT
 CIRCUITS
 DU,KE,DR,ABY,ABZ



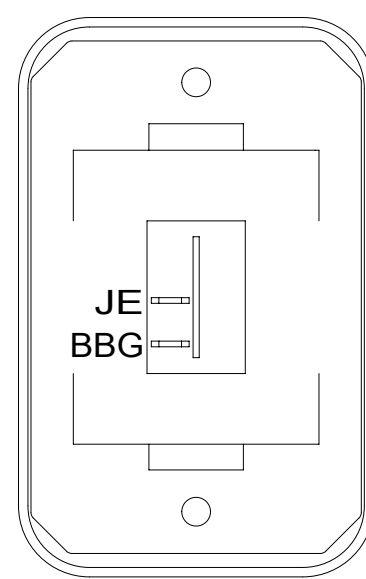
DETAIL DD

SWITCH-ROCKER
 135740-01-CHT (2)
 SWITCH-BASE
 135741-02-CHT
 SWITCH-BEZEL
 135742-02-CHT
 SCREW
 G11-08-08U (4)



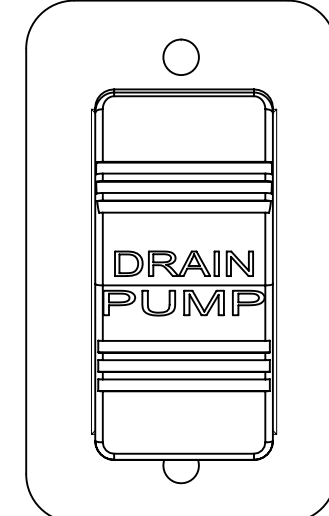
DETAIL DH

SWITCH-ROCKER
 135740-01-CHT
 SWITCH-BASE
 135741-01-CHT
 SWITCH-BEZEL
 135742-01-CHT
 SCREW
 G11-08-08U (2)



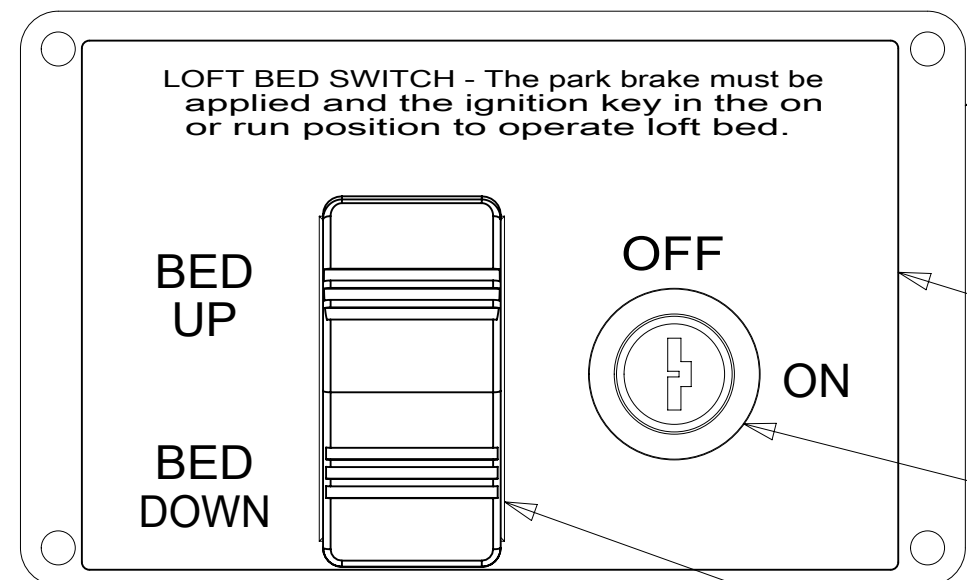
DETAIL DE

SWITCH-ROCKER
 135740-01-CHT
 SWITCH-BASE
 135741-01-CHT
 SWITCH-BEZEL
 135742-01-CHT
 SCREW
 G11-08-08U (2)



DETAIL DJ

SWITCH-ROCKER
 108357-09-000
 ACTUATOR
 108356-27-CHT
 PLATE
 98351-07-CHT
 SCREW
 G11-06-10U (2)



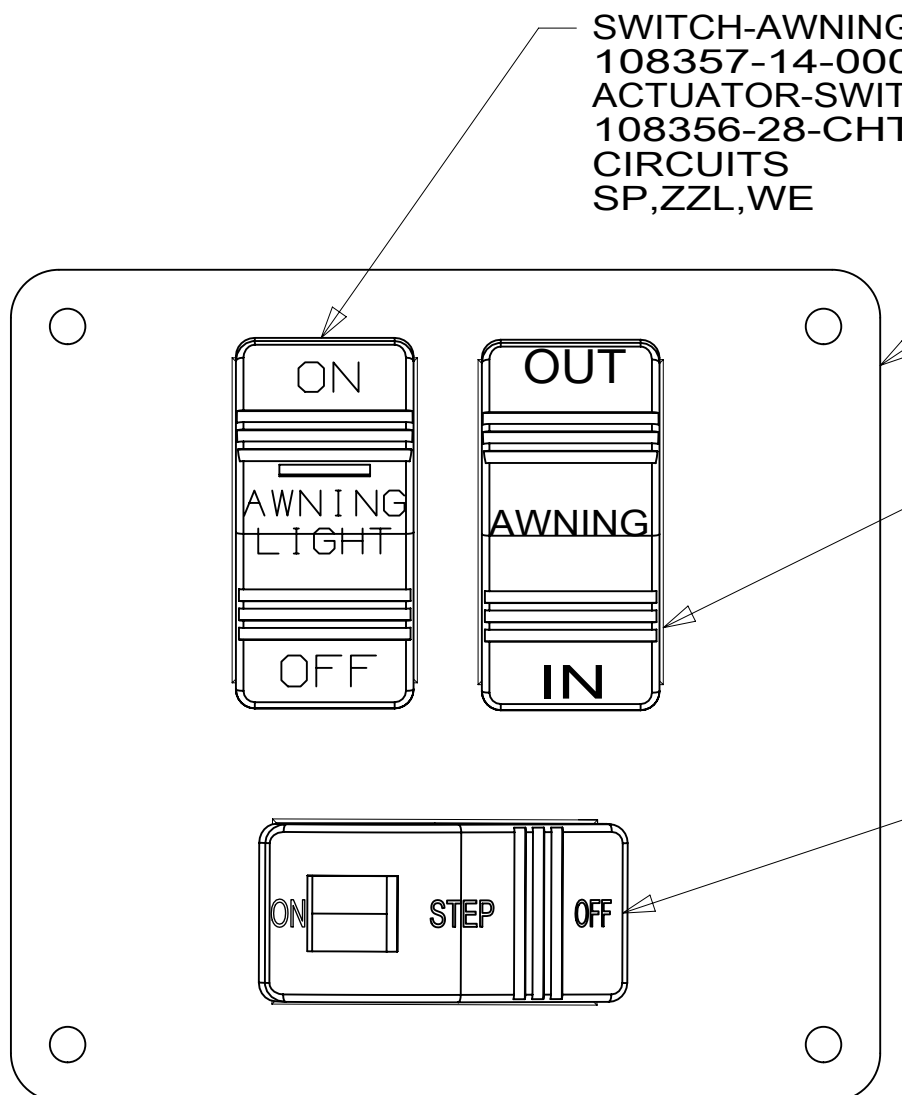
DETAIL DA

PLATE-KEY, LOFT BED
 000041278 / 319697-01-CHT
 SCREW
 76790-05-000 (4)

LABEL-LOFT BED SWITCH
 000042109 / 320011-01-CHT

SWITCH-KEY,
 SPST-ILLINOIS LCK
 163097-01-000
 (CIRCUITS: JD,JD-1)

SWITCH-ROCKER
 108357-07-000
 ACTUATOR
 108356-01-CHT
 CIRCUITS
 EB,ZZY,ZZZ



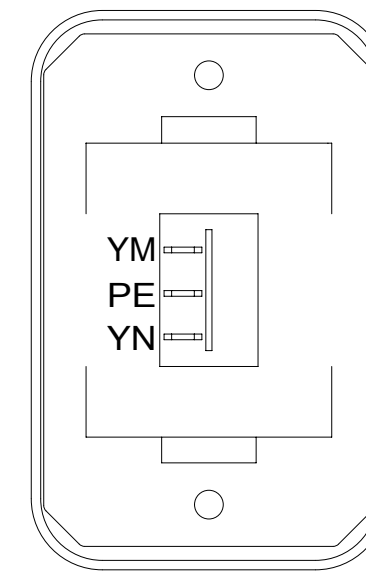
DETAIL DF 1

SWITCH-AWNING
 108357-14-000
 ACTUATOR-SWITCH
 108356-28-CHT
 CIRCUITS
 SP,ZZL,WE

PLATE-SWITCH
 158431-21-CHT
 SCREW
 G11-06-10U (4)

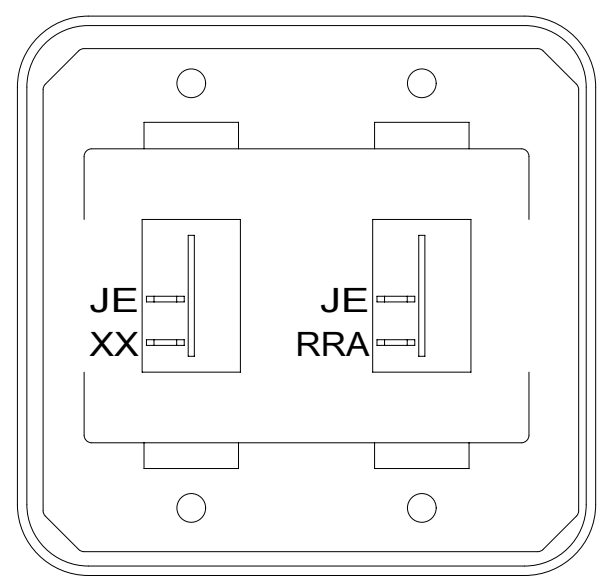
SWITCH-AWNING
 108357-06-000
 ACTUATOR-SWITCH
 108356-12-CHT
 CIRCUITS
 FFD,FFR,FFE
 FFE,JJR,FFD

SWITCH-STEP
 108357-19-000
 CIRCUITS ER,ES



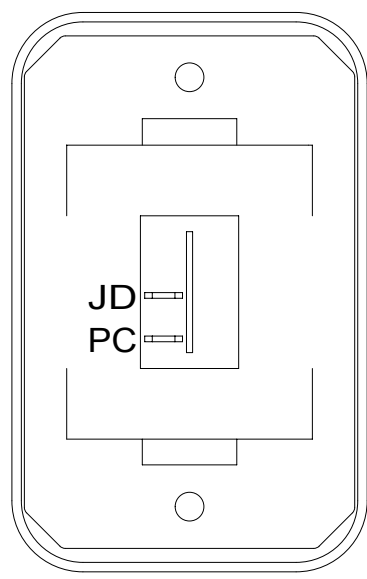
DETAIL DK

SWITCH-ROCKER
 135740-02-CHT
 SWITCH-BASE
 135741-01-CHT
 SWITCH-BEZEL
 135742-01-CHT
 SCREW
 G11-08-08U (2)



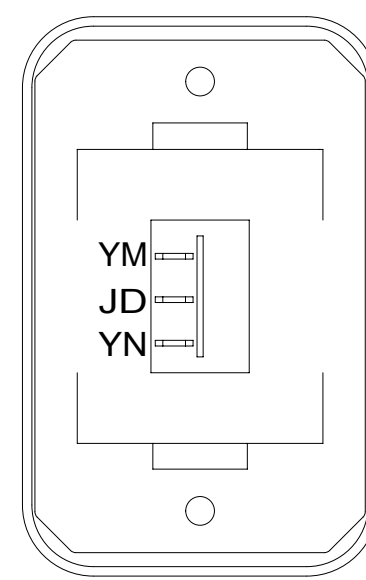
DETAIL DB

SWITCH-ROCKER
 135740-01-CHT (2)
 SWITCH-BASE
 135741-02-CHT
 SWITCH-BEZEL
 135742-02-CHT
 SCREW
 G11-08-08U (4)



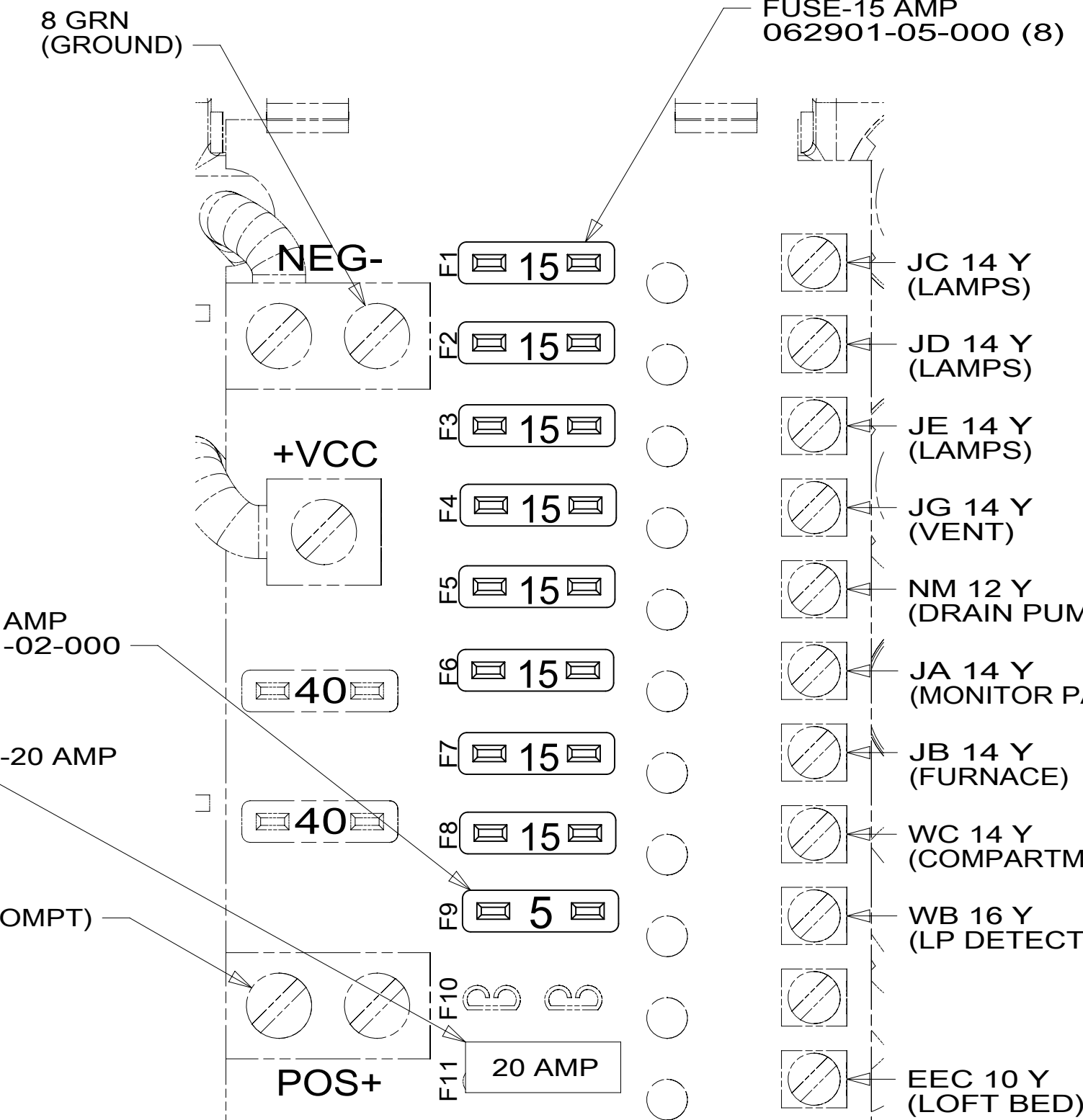
DETAIL DC

SWITCH-ROCKER
 135740-01-CHT
 SWITCH-BASE
 135741-01-CHT
 SWITCH-BEZEL
 135742-01-CHT
 SCREW
 G11-08-08U (2)



DETAIL DG

SWITCH-ROCKER
 135740-02-CHT
 SWITCH-BASE
 135741-01-CHT
 SWITCH-BEZEL
 135742-01-CHT
 SCREW
 G11-08-08U (2)

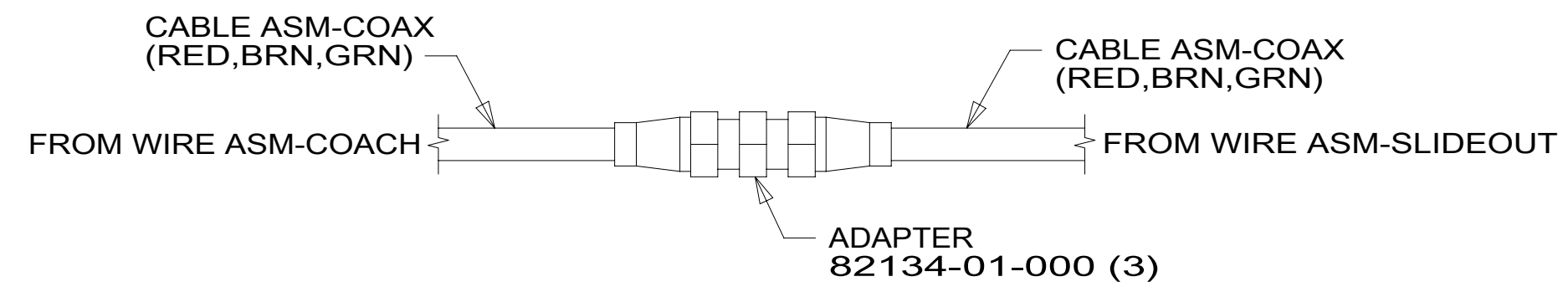


DETAIL DM

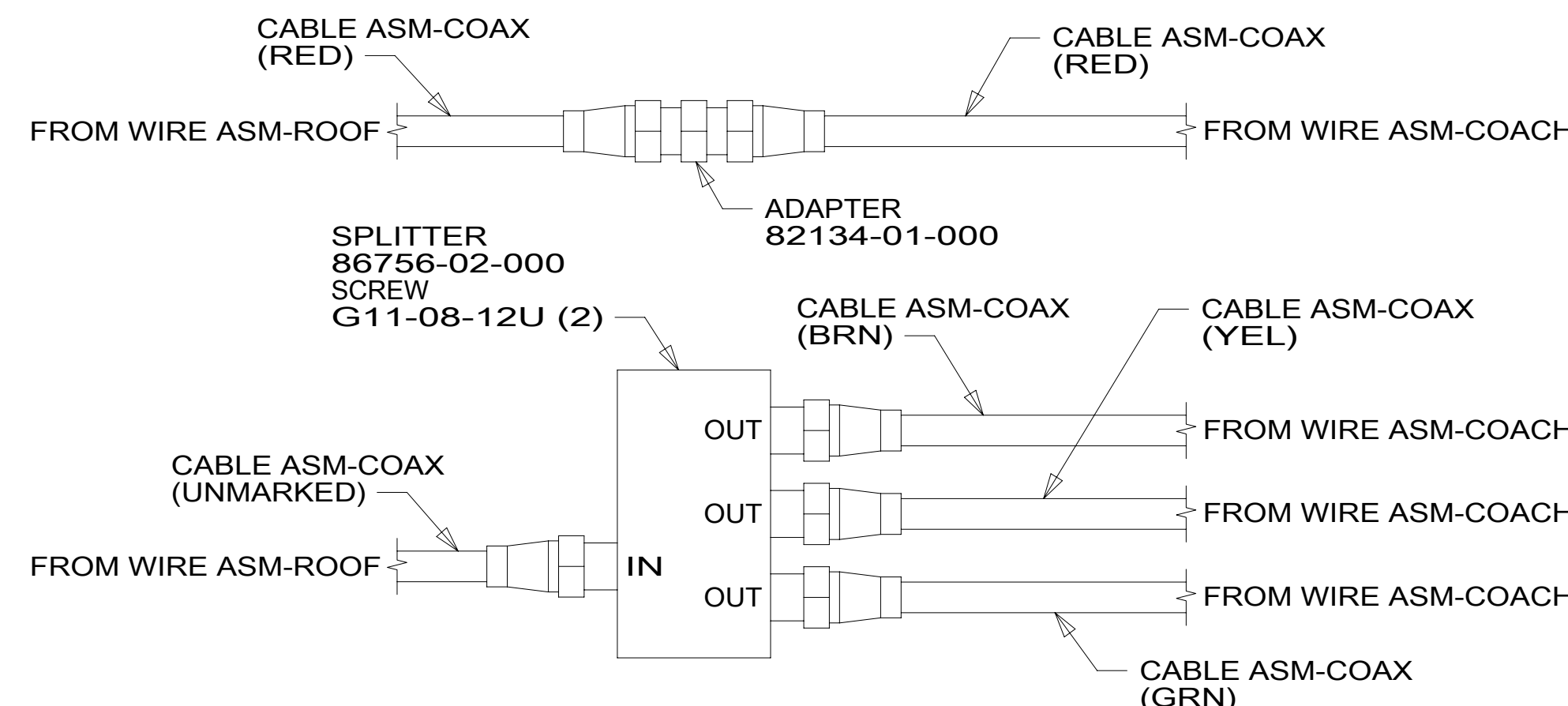
FUSE-5 AMP
 062901-02-000

CIRCUIT BREAKER-20 AMP
 184387-01-000

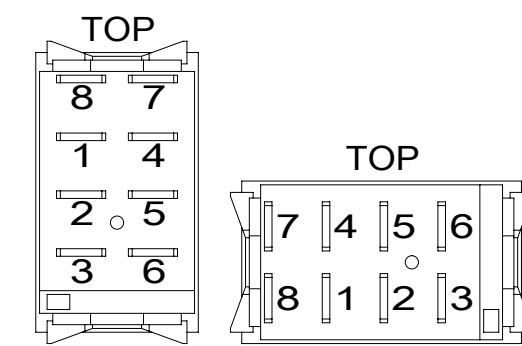
J 6 BLK
 (BATTERY COMPT)



DETAIL DP



DETAIL DL



DETAIL DN

265 CODES/STANDARDS-CSA/CMVSS

1B1 CODES/STANDARDS USA

1B1 265

DESCRIPTION:
WIRING INSTL-BODY, 12V

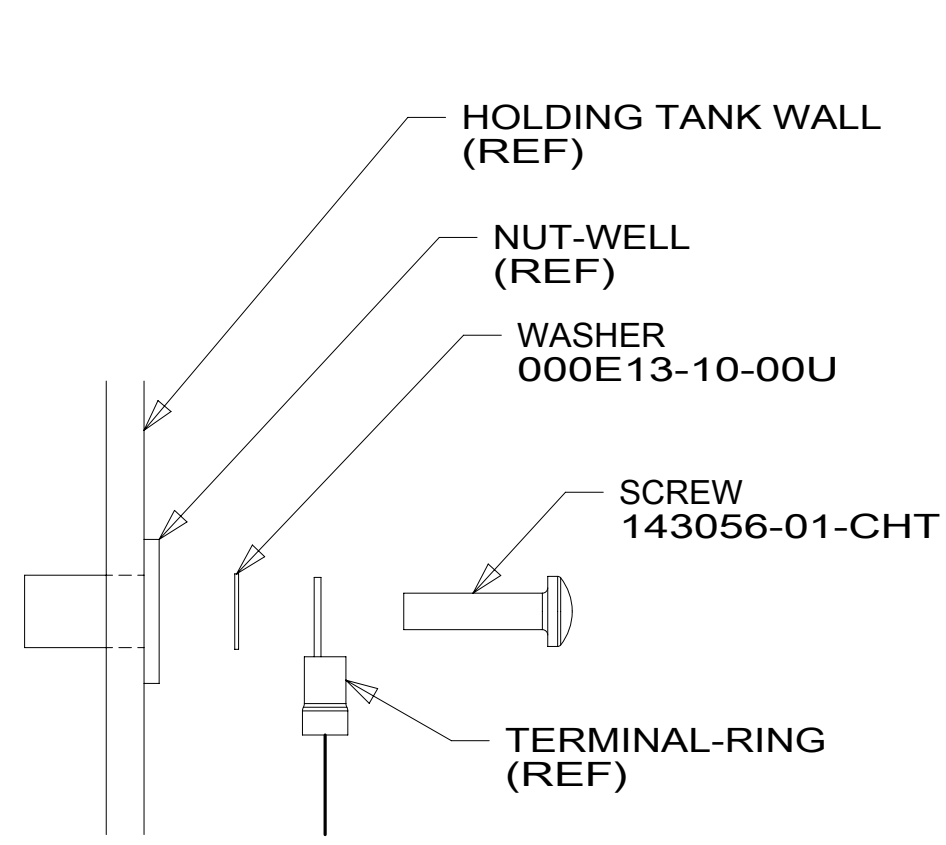
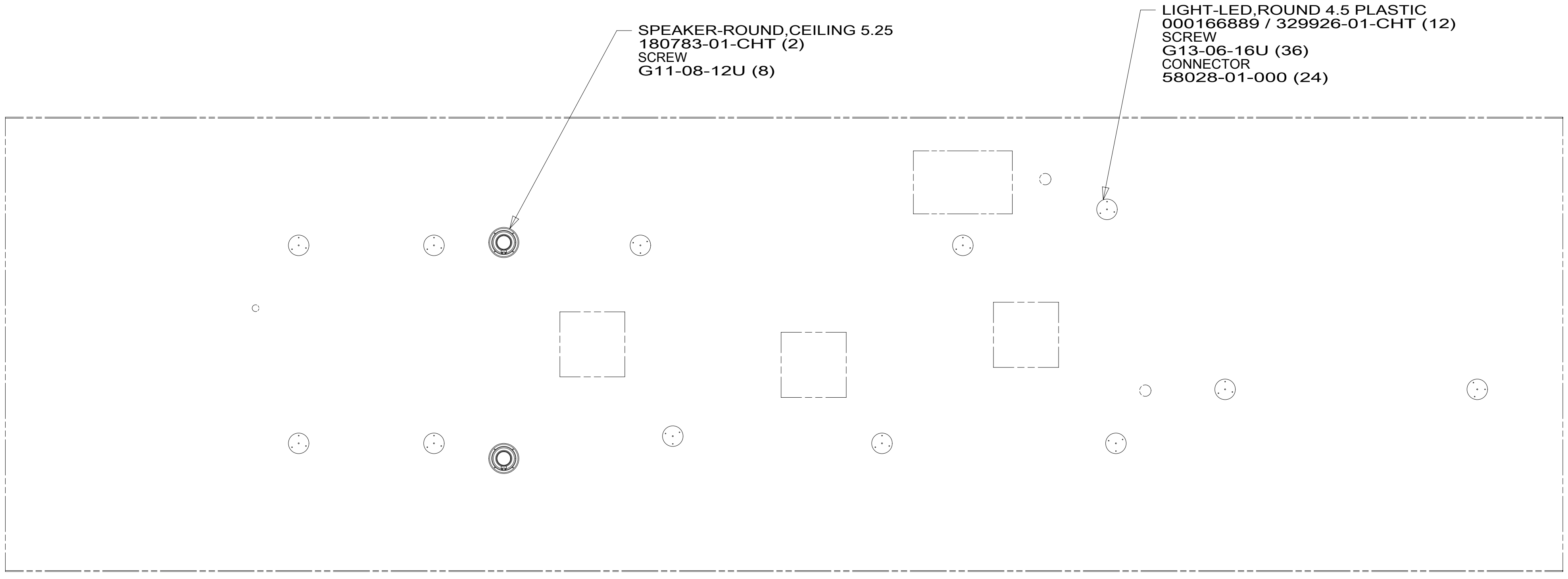
SHEET: 4 OF 6 ITEM PART NO: 000115155 / 32193701000 REV

FOR ELECTRICAL
 TORQUE
 SPECIFICATIONS
 SEE DWG NO.
 128783-01-000

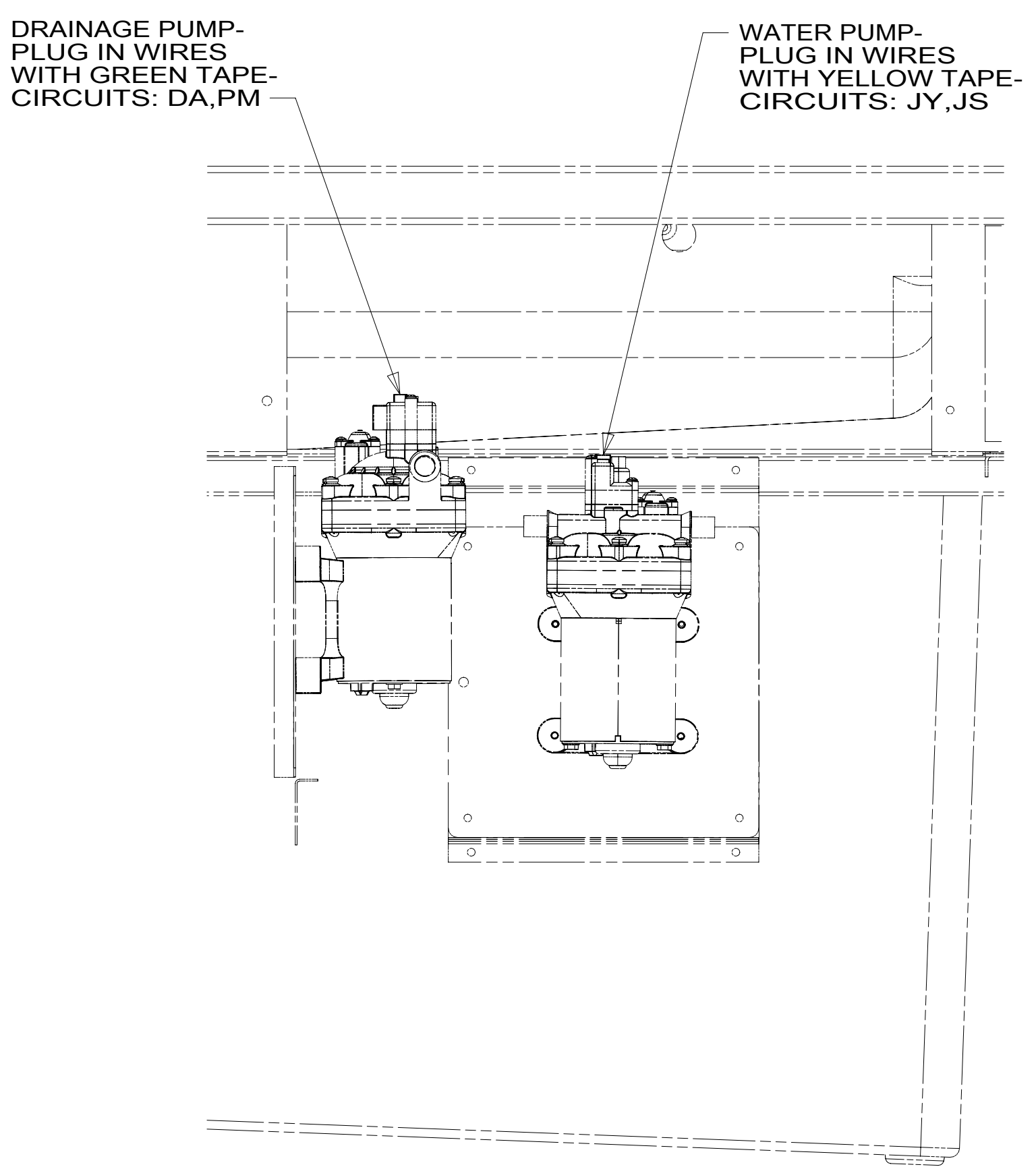
FOR ELECTRICAL
 CALLOUTS
 SEE DWG NO.
 121339-01-000

NOTES:
 1 FOR SWITCH ORIENTATION SEE DETAIL DN.

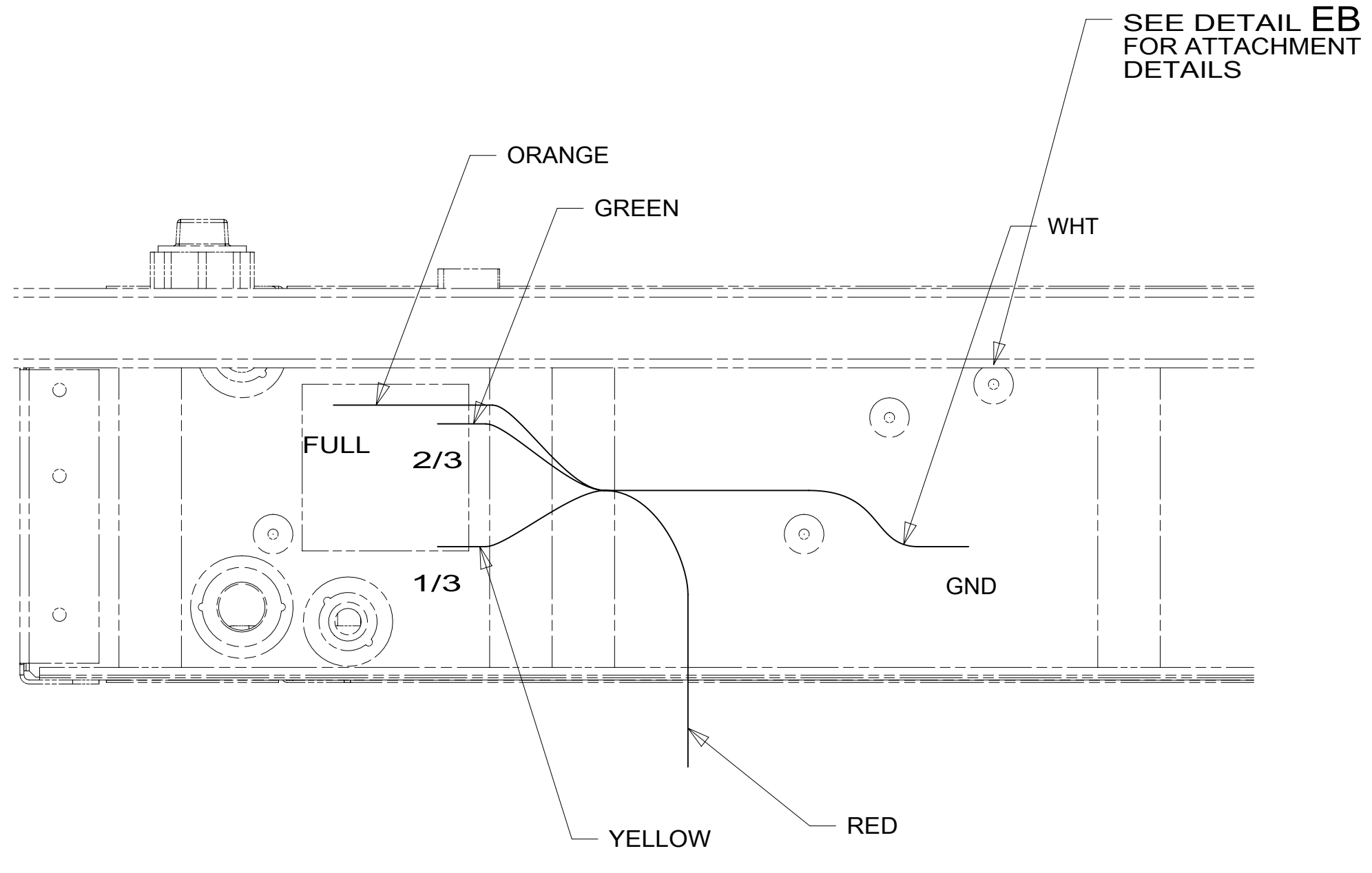
8 7 6 5 4 3 2 1



DETAIL EB 1



DETAIL EC



DETAIL EA

1 TYPICAL WIRE ATTACHMENT AT ALL LEVEL PROBES (4 EACH) FOR WATER, MAIN, AND AUX HOLDING TANKS.

NOTES:

265 CODES/STANDARDS-CSA/CMVSS
1B1 CODES/STANDARDS USA

FOR ELECTRICAL TORQUE SPECIFICATIONS SEE DWG NO. 128783-01-000

FOR ELECTRICAL CALLOUTS SEE DWG NO. 121339-01-000

| | |
|------------------------|-------------------------|
| DESCRIPTION: | |
| 1B1 265 | |
| WIRING INSTL-BODY, 12V | |
| SHEET: | ITEM/PART NO: |
| 5 OF 6 | 000115155 / 32193701000 |
| REV | |

8 7 6 5 4 3 2 1 09-Oct-2018

8 7 6 5 4 3 2 1

D

D

C

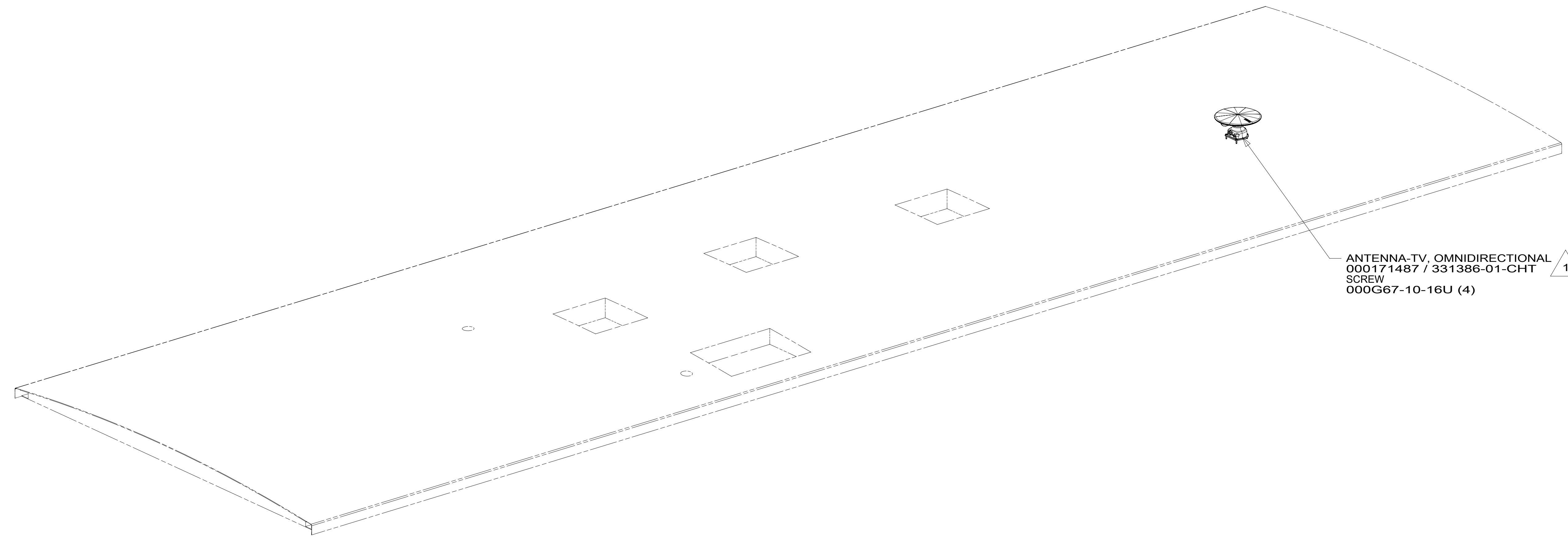
C

B

B

A

A



ANTENNA-TV, OMNIDIRECTIONAL
000171487 / 331386-01-CHT
SCREW
000G67-10-16U (4) 1

1 SEE ANTENNA INSTALLATION MANUAL FOR CORRECT
INSTALLATION PROCEDURE.

NOTES:

FOR ELECTRICAL
TORQUE
SPECIFICATIONS
SEE DWG NO.
128783-01-000

FOR
ELECTRICAL
CALLOUTS
SEE DWG NO.
121339-01-000

265 CODES/STANDARDS-CSA/CMVSS
1B1 CODES/STANDARDS USA

1B1 265

DESCRIPTION:
WIRING INSTL-BODY, 12V

SHEET: 6 OF 6 ITEM/PART NO: 000115155 / 32193701000 REV

8 7 6 5 4 3 2 1 09-Oct-2018