

8

7

6

5



4

3

2

1

D

D

C

C



B

B

A

A

8

7

6

5



4

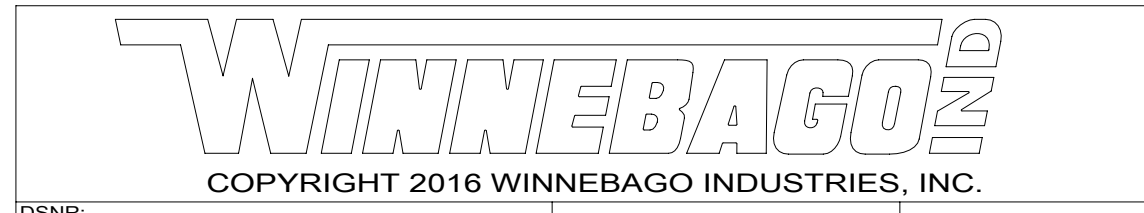
3

2

1

CABLE ASM-CHASSIS BATTERY (RED)	192678-02-000
CABLE ASM-COACH BATTERY (YEL)	141415-59-064
CABLE ASM-COACH BATTERY GND (BLK)	133566-12-029
CABLE ASM-GENERATOR (GRN)	141415-42-055
CABLE ASM-GENERATOR GND (BLK)	133566-12-020
CABLE ASM-JUMPER,POS	141415-59-018
CABLE ASM-JUMPER,NEG	133566-12-020
CABLE ASM-INVERTER FUSE (ORG)	141415-61-002
CABLE ASM-INVERTER (ORG)	141415-66-012
CABLE ASM-INVERTER GND (BLK)	133566-12-025
CABLE ASM-INVERTER CASE GND (GRN)	136145-05-037

- 265 CODES/STANDARDS-CSA/CMVSS
- 1B1 CODES/STANDARDS USA
- 1B1 265



DSNR:		ALL DIMENSIONS ARE IN MILLIMETERS	
DIFFR:		MATERIAL:	
UNSPECIFIED TOLERANCES:			
WHOLE DIM (X)	: 3		
ONE-PLACE (X.X)	: 1.5		
TWO-PLACE (X.XX)	: 0.50		
ANGLE	: 1°		

FOR ELECTRICAL TORQUE SPECIFICATIONS SEE DWG NO. 128783-01-000

FOR ELECTRICAL CALLOUTS SEE DWG NO. 121339-01-000

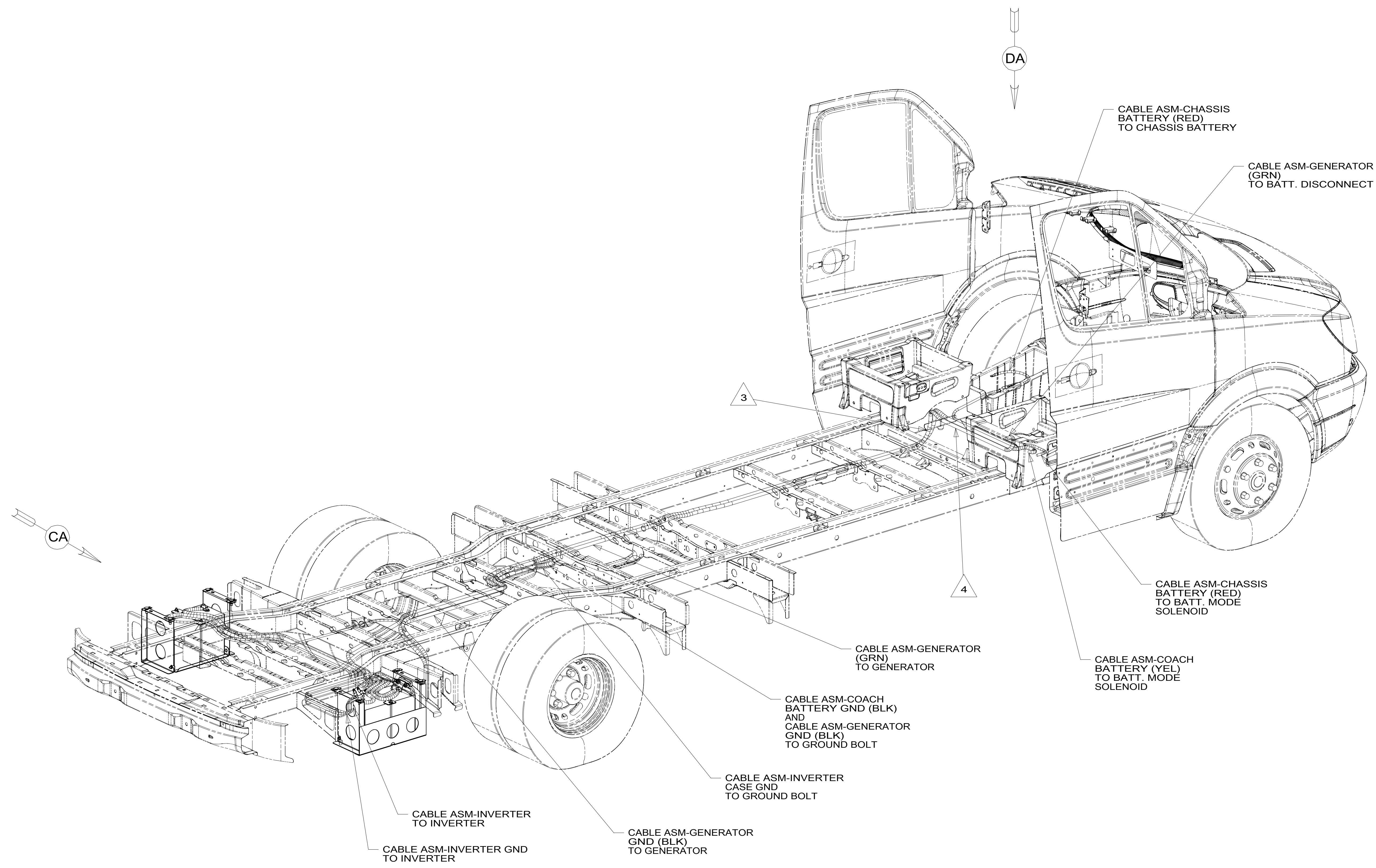
REFER TO ES0018 FOR FASTENER TIGHTENING GUIDELINES	WEIGHT: (LBS)	FIRST USED:
		18 170B

DESCRIPTION: **BATTERY INSTL**

SHEET:	ITEM/PART NO.:	REV
1 OF 4	000112197 / 32291801000	

8 7 6 5 4 3 2 1

D
C
B
A



CABLE ASM-CHASSIS BATTERY (RED) TO CHASSIS BATTERY

CABLE ASM-GENERATOR (GRN) TO BATT. DISCONNECT

CABLE ASM-CHASSIS BATTERY (RED) TO BATT. MODE SOLENOID

CABLE ASM-COACH BATTERY (YEL) TO BATT. MODE SOLENOID

CABLE ASM-GENERATOR (GRN) TO GENERATOR

CABLE ASM-COACH BATTERY GND (BLK) AND CABLE ASM-GENERATOR GND (BLK) TO GROUND BOLT

CABLE ASM-INVERTER CASE GND TO GROUND BOLT

CABLE ASM-GENERATOR GND (BLK) TO GENERATOR

CABLE ASM-INVERTER TO INVERTER

CABLE ASM-INVERTER GND TO INVERTER

4 CABLES ROUTED THROUGH TROUGH BETWEEN CAB SEATS IN THIS AREA.

3 ROUTE CABLES THROUGH GROMMET UNDER DRIVERS SEAT.

2. SEE WIRING INSTL-CHASSIS FOR ADDITIONAL INFORMATION.

1. AT MINIMUM ALL WIRES TO BE SUPPORTED AND SECURED PER CODE REQUIREMENTS. USE CLAMP 10495 OR 10497 OR WIRE TIE 8343 OR 108046 AND SCREW G67-XX-XXX OR G56-XX-XXX AS APPROPRIATE FOR INSTALLATION.

NOTES:

265 CODES/STANDARDS-CSA/CMVSS

1B1 CODES/STANDARDS USA

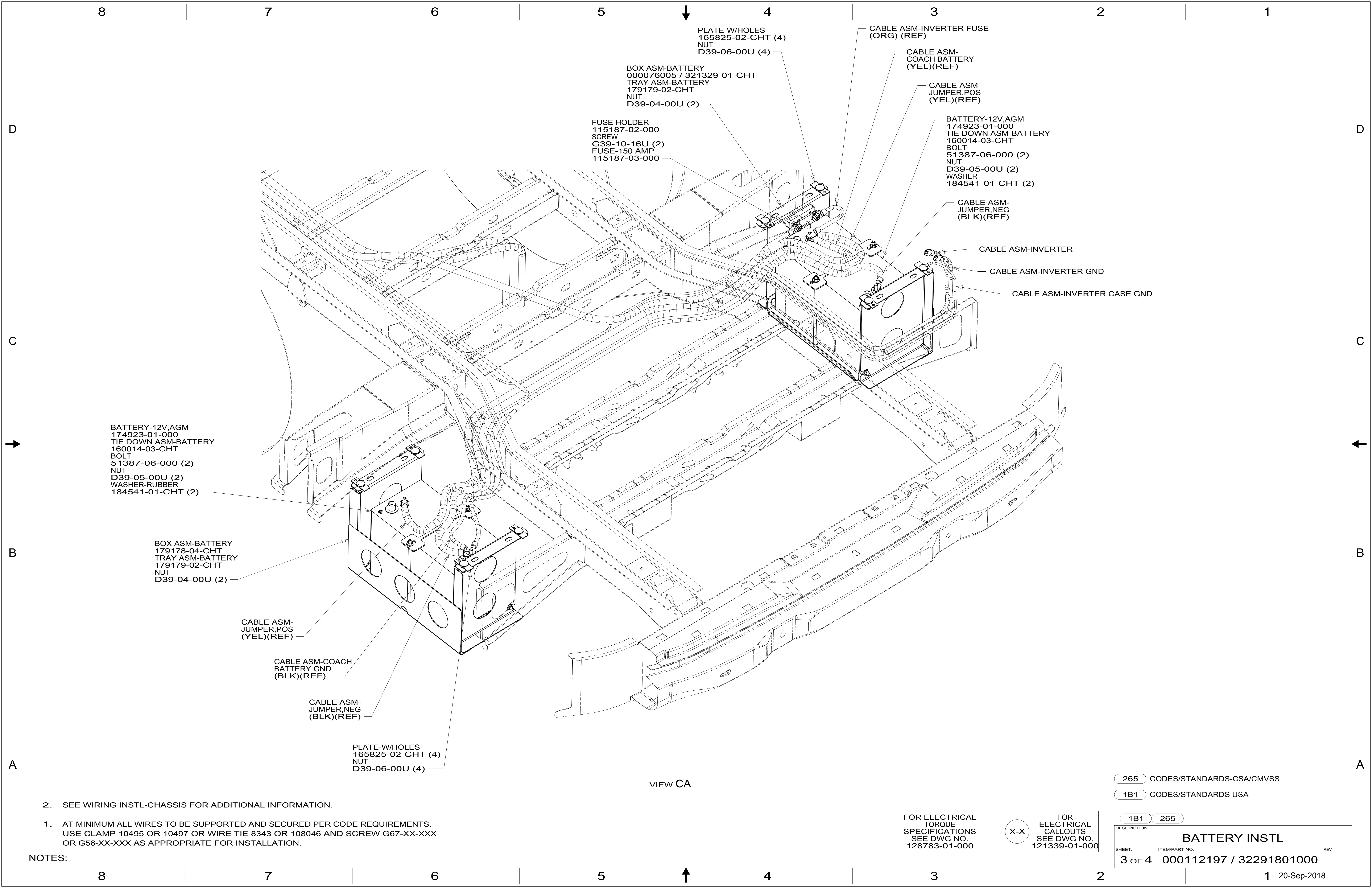
1B1 265

FOR ELECTRICAL TORQUE SPECIFICATIONS SEE DWG NO. 128783-01-000

FOR ELECTRICAL CALLOUTS SEE DWG NO. 121339-01-000

DESCRIPTION: BATTERY INSTL		
SHEET: 2 OF 4	ITEM/PART NO: 000112197 / 32291801000	REV

8 7 6 5 4 3 2 1 20-Sep-2018



VIEW CA

2. SEE WIRING INSTL-CHASSIS FOR ADDITIONAL INFORMATION.
1. AT MINIMUM ALL WIRES TO BE SUPPORTED AND SECURED PER CODE REQUIREMENTS. USE CLAMP 10495 OR 10497 OR WIRE TIE 8343 OR 108046 AND SCREW G67-XX-XXX OR G56-XX-XXX AS APPROPRIATE FOR INSTALLATION.

NOTES:

265 CODES/STANDARDS-CSA/CMVSS
 1B1 CODES/STANDARDS USA

FOR ELECTRICAL TORQUE SPECIFICATIONS SEE DWG NO. 128783-01-000

X-X FOR ELECTRICAL CALLOUTS SEE DWG NO. 121339-01-000

DESCRIPTION:		1B1	265
BATTERY INSTL			
SHEET:	ITEM/PART NO.:	REV	
3 OF 4	000112197 / 32291801000		



NUT
OMD29K-08-000

CABLE ASM-
CHASSIS BATTERY

VIEW DA

- 2. SEE WIRING INSTL-CHASSIS FOR ADDITIONAL INFORMATION.
- 1. AT MINIMUM ALL WIRES TO BE SUPPORTED AND SECURED PER CODE REQUIREMENTS. USE CLAMP 10495 OR 10497 OR WIRE TIE 8343 OR 108046 AND SCREW G67-XX-XXX OR G56-XX-XXX AS APPROPRIATE FOR INSTALLATION.

NOTES:

265 CODES/STANDARDS-CSA/CMVSS
 1B1 CODES/STANDARDS USA

FOR ELECTRICAL
 TORQUE
 SPECIFICATIONS
 SEE DWG NO.
 128783-01-000

FOR
 ELECTRICAL
 CALLOUTS
 SEE DWG NO.
 121339-01-000

DESCRIPTION:		1B1 265	
BATTERY INSTL			
SHEET:	ITEM/PART NO.:	REV	
4 OF 4	000112197 / 32291801000		