

WIRE ASM-CHASSIS
TO GROUND
BOLT UNDER
DRIVER'S SEAT
NUT
OMD54F-06-000 (2)

SJ,WJ,KE
TO SPRINTER WIRING
DETAIL CC

2 CABLE ASM-
STARTER (RED)

153 8 TEMP SENSOR
(REF)

FRONT
AXLE

1285

DATUM

TR
TO SPRINTER
WIRING
VIEW CB

ROUTE TEMPERATURE
SENSOR THROUGH
FIREWALL BOOT
IN THIS AREA

153 7

AEZ,AFA,AFB,AFC,AFT
TO PSM UNDER DRIVER'S SEAT
DETAIL CE

CLAMP
83610-02-000 (11)
RIVET
118626-01-CHT (11)

2 CABLE ASM-GENERATOR
(GRN)

JT,MP
TO LP TANK

1495

2013

8 PIN HSGS (3)
TO WATER PUMP SWITCH
TO DRAIN PUMP SWITCH
TO SERVICE LIGHT SWITCH

3

DA,PM
TO DRAIN PUMP

GROUND BOLT
NUT
OMD54F-06-000

4

GROMMET
023942-02-000

TO WIRE ASM-COACH

BATTERY INSTL
000112197 / 322918-01-000

2 CABLE ASM-
COACH BATTERY
(YEL)

HT TO BATTERY
NEGATIVE CABLE

TO WIRE ASM-COACH, LEFT

CLAMP
10497-10-000 (2)
RIVET
118626-01-CHT (2)

2 CABLE ASM-
JUMPER,GND
(BLK)

2 CABLE ASM-
COACH BATTERY GND
(BLK)

3 J TO ISOLATED STUD

GROMMET
023942-01-000

5 TO GENERATOR

2 CABLE ASM-GENERATOR GND
(BLK)

LOWER DASH PANEL
(LOCATED BELOW STEERING
WHEEL COLUMN)

6

SWITCH-RADIO
174757-12-CHT ← WITHOUT 8FV
PANEL-SWITCH
174834-01-CHT ← WITHOUT 8FV

8FV MERCEDES CHASSIS UPGRADE PKG

153 LG SCREEN-INFO/GPS SIRIUSXM

265 CODES/STANDARDS-CSA/CMVSS

1B1 CODES/STANDARDS USA

1B1 265

DESCRIPTION:
WIRING INSTL-CHASSIS

SHEET: 2 OF 7 ITEM/PART NO: 000112028 / 32261501000 REV

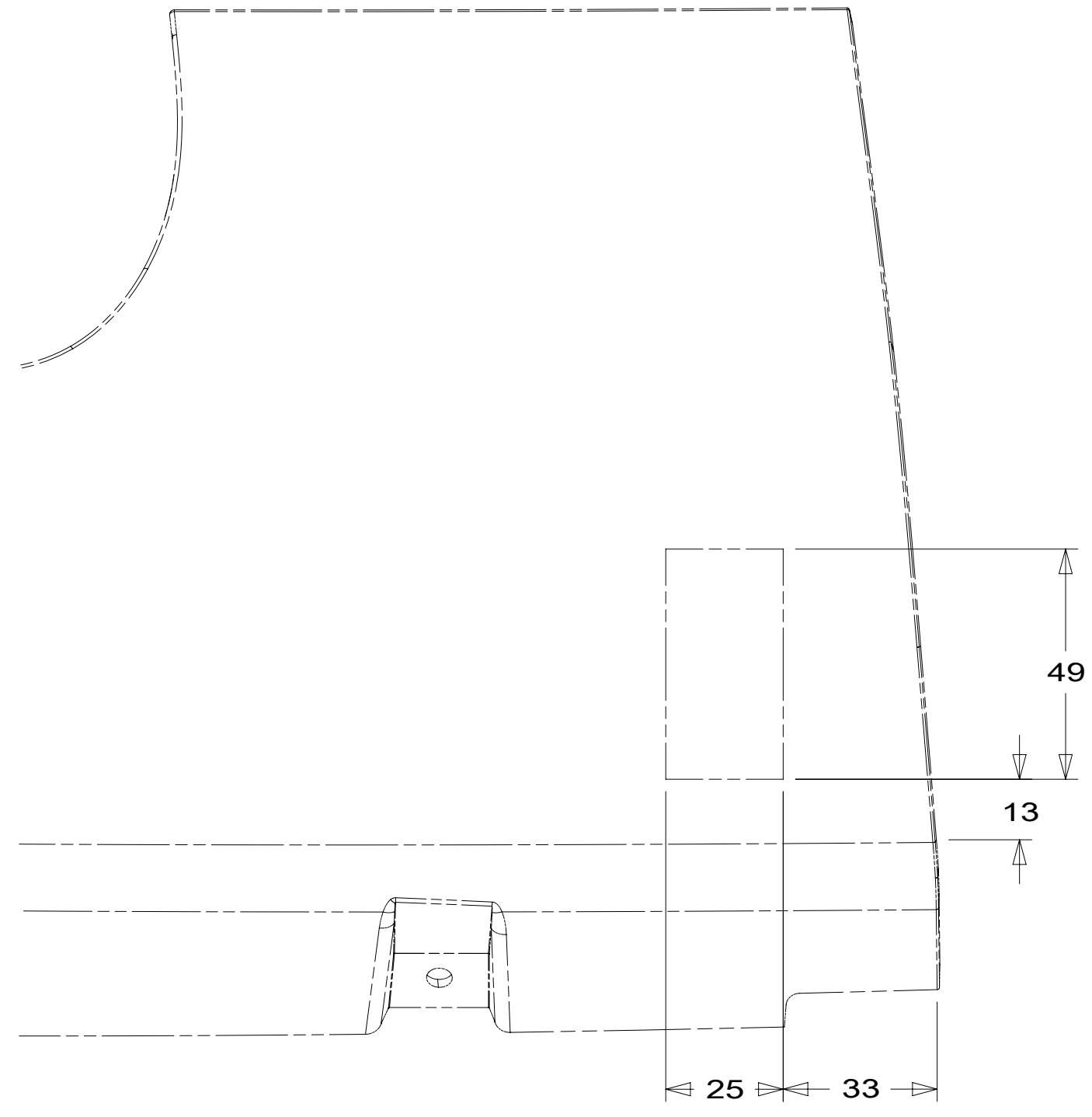
FOR ELECTRICAL
TORQUE
SPECIFICATIONS
SEE DWG NO.
128783-01-000

X-X

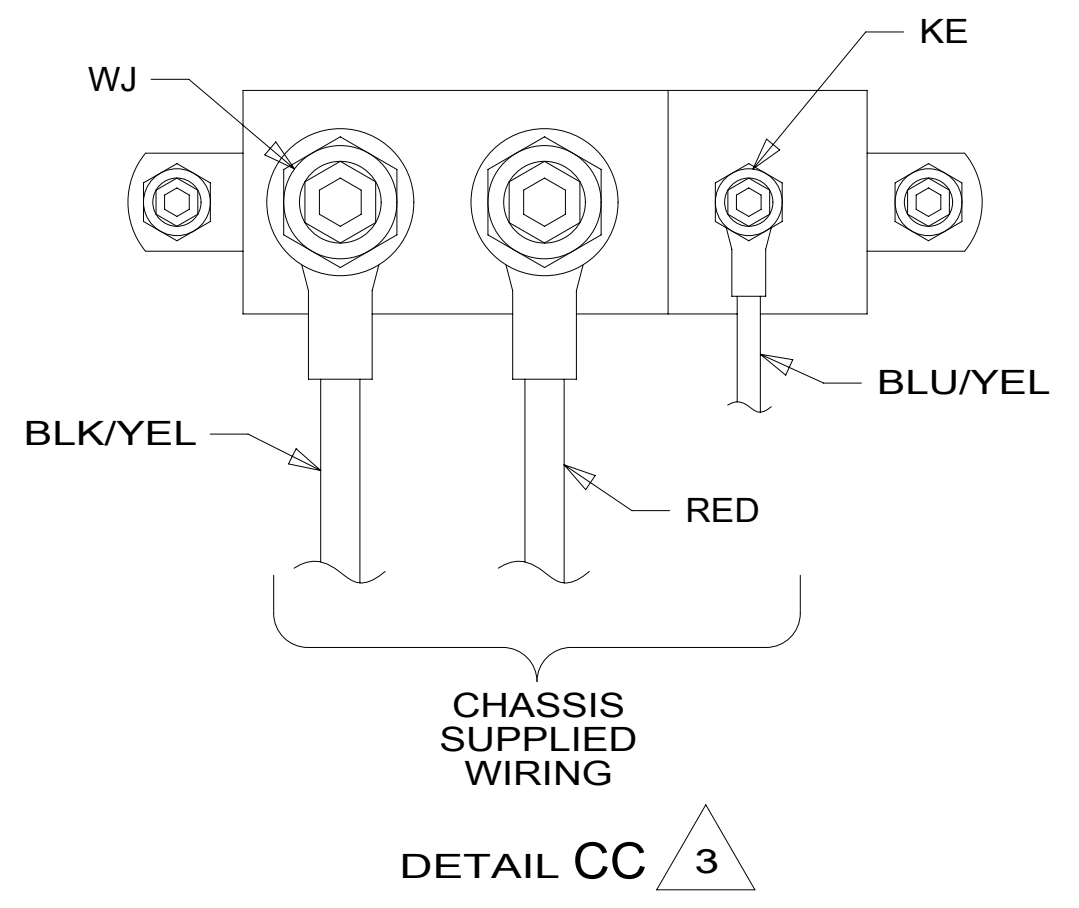
FOR
ELECTRICAL
CALLOUTS
SEE DWG NO.
121339-01-000

NOTES:
1. SECURE CONDUIT 41953, TAB AS REQUIRED,
OVER ALL WIRES IN CONTACT WITH SHARP EDGES.

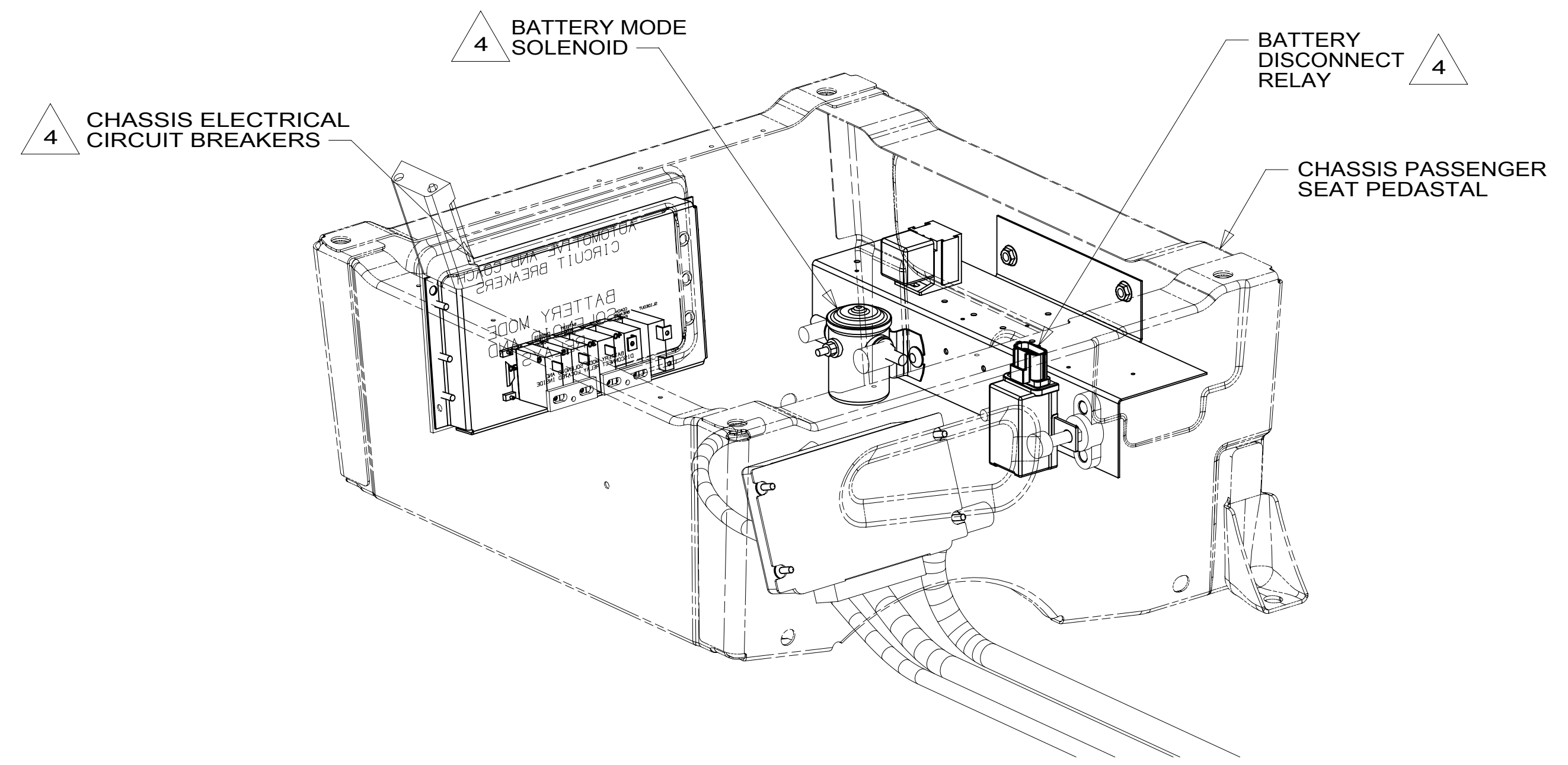
DETAIL BA



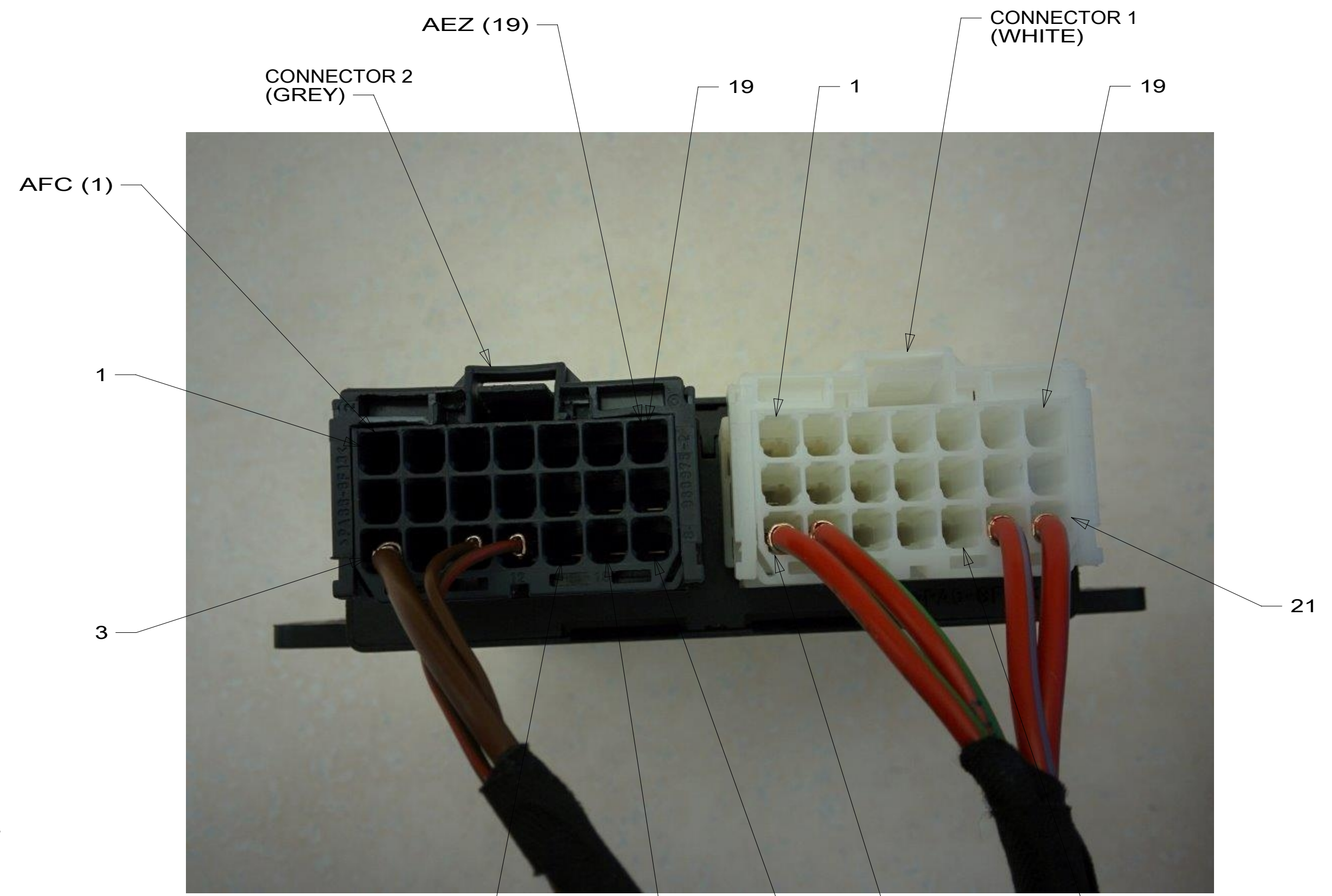
DETAIL CA



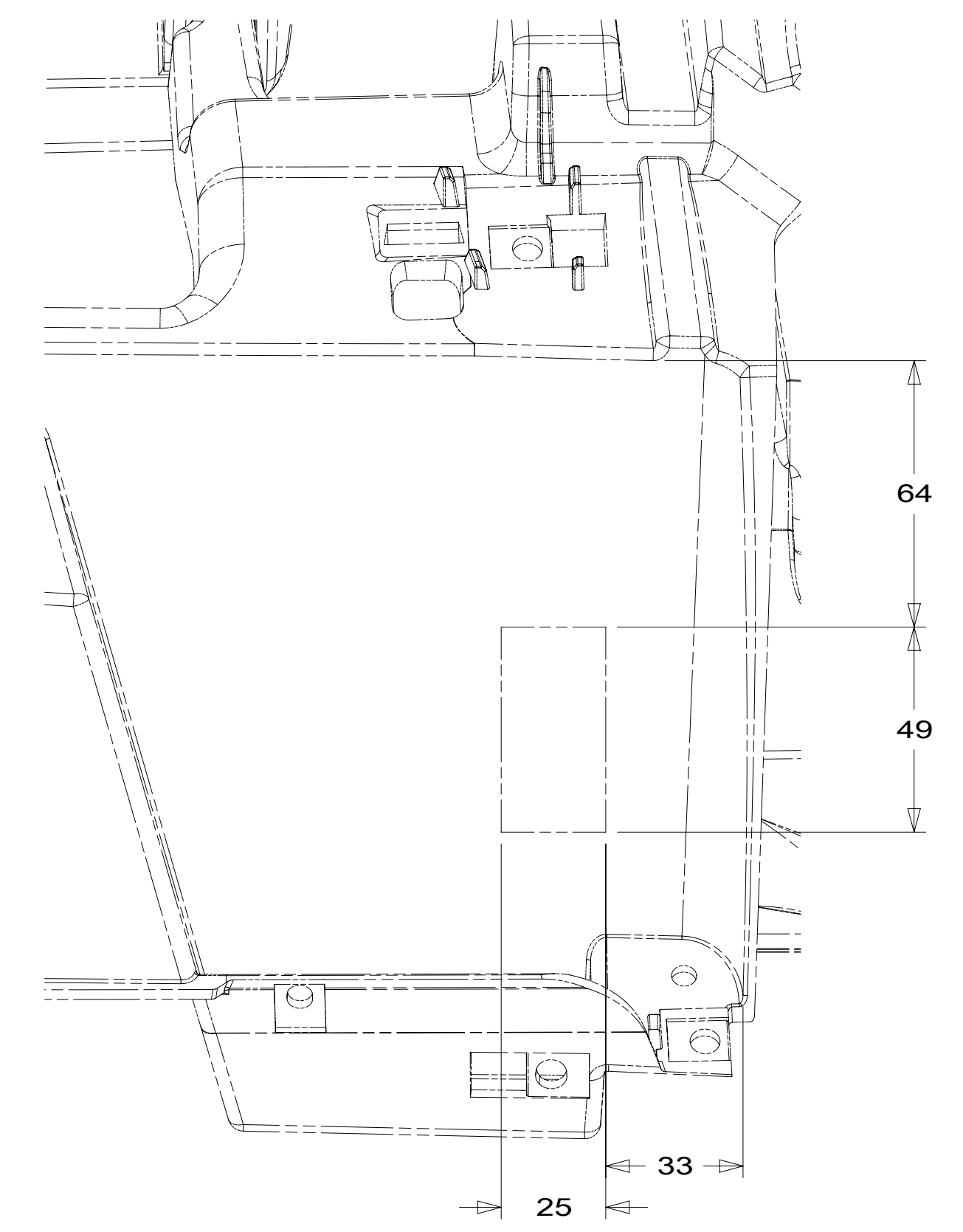
DETAIL CC 3



DETAIL CD



DETAIL CE 5



VIEW CB 2

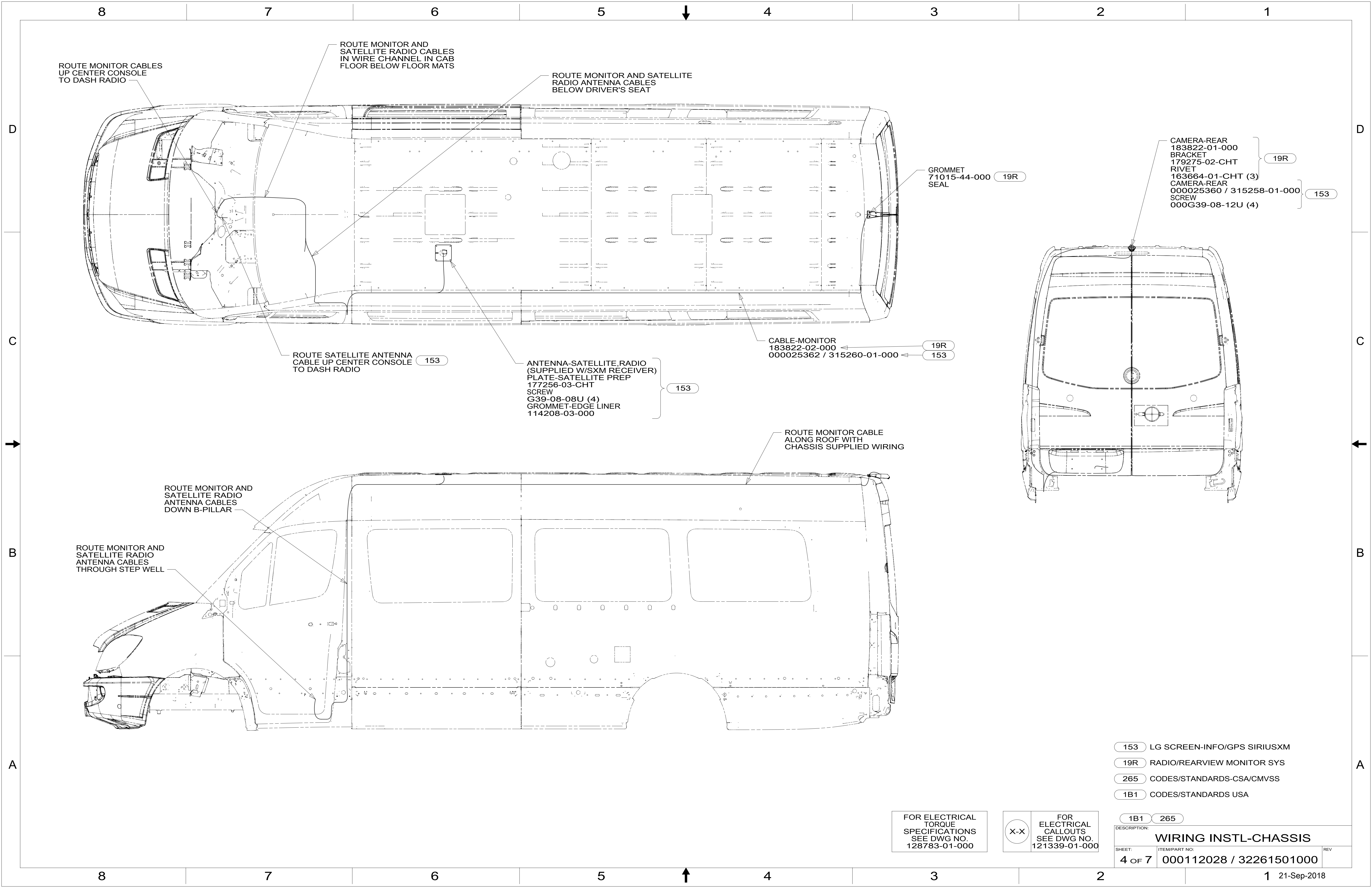
- NOTES:
- 5 LOCATED UNDER DRIVER'S SEAT.
 - 4 SEE CHASSIS ELECTRICAL BOX ASM FOR ADDITIONAL INFORMATION.
 - 3 CONNECTION POINT IS LOCATED UNDER DRIVERS SEAT.
 - 2 DASH STRUCTURE LOCATED BEHIND LOWER DASH PANEL.
1. SECURE CONDUIT 41953, TAB AS REQUIRED, OVER ALL WIRES IN CONTACT WITH SHARP EDGES.

FOR ELECTRICAL TORQUE SPECIFICATIONS SEE DWG NO. 128783-01-000

FOR ELECTRICAL CALLOUTS SEE DWG NO. 121339-01-000

265 CODES/STANDARDS-CSA/CMVSS
1B1 CODES/STANDARDS USA

DESCRIPTION:		1B1 265	
WIRING INSTL-CHASSIS			
SHEET:	ITEM/PART NO.:	REV	
3 OF 7	000112028 / 32261501000		



ROUTE MONITOR CABLES
UP CENTER CONSOLE
TO DASH RADIO

ROUTE MONITOR AND
SATELLITE RADIO CABLES
IN WIRE CHANNEL IN CAB
FLOOR BELOW FLOOR MATS

ROUTE MONITOR AND SATELLITE
RADIO ANTENNA CABLES
BELOW DRIVER'S SEAT

GROMMET
71015-44-000 (19R)
SEAL

CAMERA-REAR
183822-01-000
BRACKET
179275-02-CHT
RIVET
163664-01-CHT (3)
CAMERA-REAR
000025360 / 315258-01-000 (153)
SCREW
000G39-08-12U (4)

ROUTE SATELLITE ANTENNA
CABLE UP CENTER CONSOLE
TO DASH RADIO (153)

ANTENNA-SATELLITE_RADIO
(SUPPLIED W/SXM RECEIVER)
PLATE-SATELLITE PREP
177256-03-CHT
SCREW
G39-08-08U (4)
GROMMET-EDGE LINER
114208-03-000 (153)

CABLE-MONITOR
183822-02-000 (19R)
000025362 / 315260-01-000 (153)

ROUTE MONITOR CABLE
ALONG ROOF WITH
CHASSIS SUPPLIED WIRING

ROUTE MONITOR AND
SATELLITE RADIO
ANTENNA CABLES
DOWN B-PILLAR

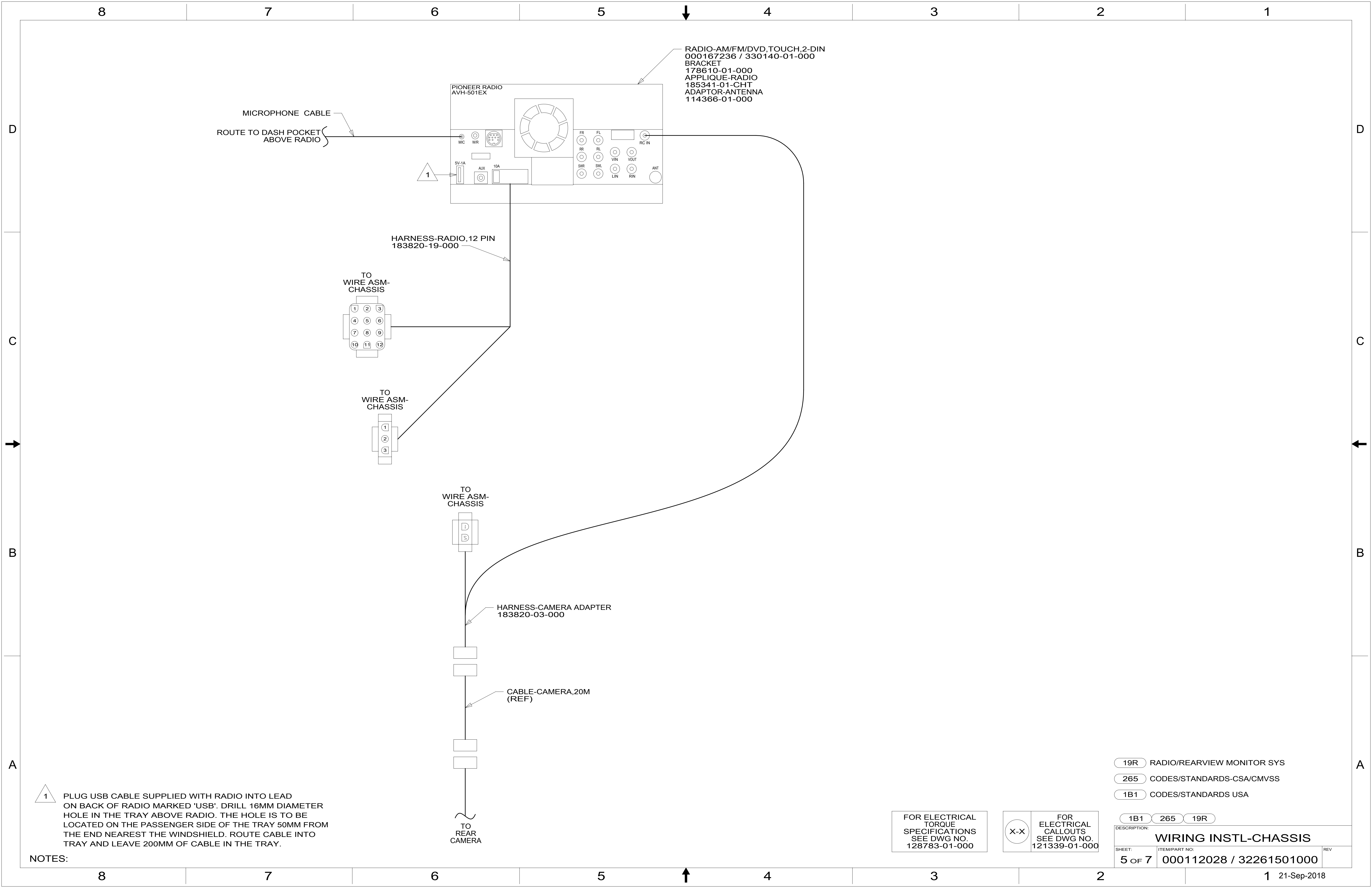
ROUTE MONITOR AND
SATELLITE RADIO
ANTENNA CABLES
THROUGH STEP WELL

- (153) LG SCREEN-INFO/GPS SIRIUSXM
- (19R) RADIO/REARVIEW MONITOR SYS
- (265) CODES/STANDARDS-CSA/CMVSS
- (1B1) CODES/STANDARDS USA

FOR ELECTRICAL
TORQUE
SPECIFICATIONS
SEE DWG NO.
128783-01-000

FOR
ELECTRICAL
CALLOUTS
SEE DWG NO.
121339-01-000

(1B1)	(265)
DESCRIPTION: WIRING INSTL-CHASSIS	
SHEET: 4 OF 7	ITEM/PART NO: 000112028 / 32261501000
REV	



↓

↑

1

→

←

D

C

B

A

D

C

B

A

8

7

6

5

4

3

2

1

8

7

6

5

4

3

2

1

D

C

B

A

D

C

B

A

D

C

B

A

D

C

B

A

D

C

B

A

D

C

B

A

D

C

B

A

D

C

B

A

D

C

B

A

D

C

B

A

D

C

B

A

D

C

B

A

D

C

B

A

D

C

B

A

D

C

B

A

D

C

B

A

D

C

B

A

D

C

B

A

D

C

B

A

D

C

B

A

D

C

B

A

D

C

B

A

D

C

B

A

D

C

B

A

D

C

B

A

D

C

B

A

D

C

B

A

D

C

B

A

D

C

B

A

D

C

B

A

D

C

B

A

D

C

B

A

D

C

B

A

D

C

B

A

D

C

B

A

D

C

B

A

D

C

B

A

D

C

B

A

D

C

B

A

D

C

B

A

D

C

B

A

D

C

B

A

D

C

B

A

D

C

B

A

D

C

B

A

D

C

B

A

D

C

B

A

D

C

B

A

D

C

B

A

D

C

B

A

D

C

B

A

D

C

B

A

D

C

B

A

D

C

B

A

D

C

B

A

D

C

B

A

D

C

B

A

D

C

B

A

D

C

B

A

D

C

B

A

D

C

B

A

D

C

B

A

D

C

B

A

D

C

B

A

D

C

B

A

D

C

B

A

D

C

B

A

D

C

B

A

D

C

B

A

D

C

B

A

D

C

B

A

D

C

B

A

D

C

B

A

D

C

B

A

D

C

B

A

D

C

B

A

D

C

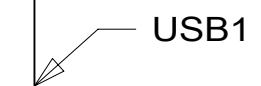
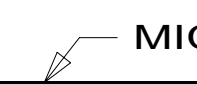
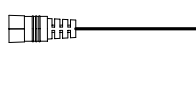
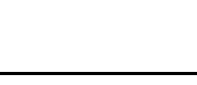
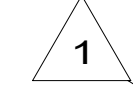
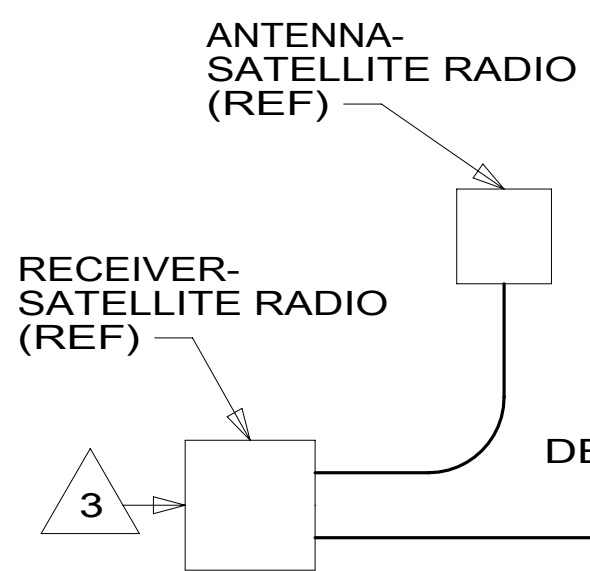
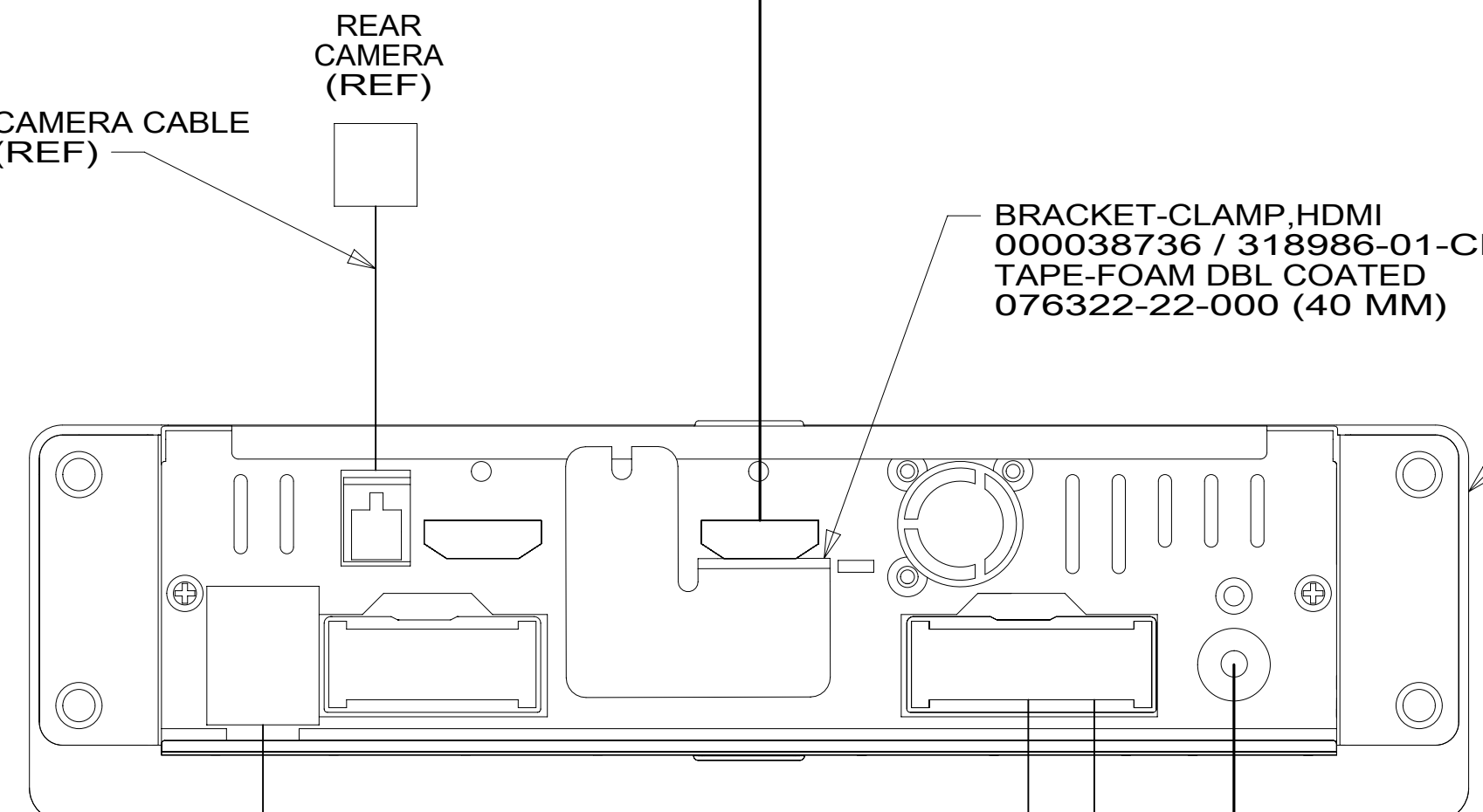
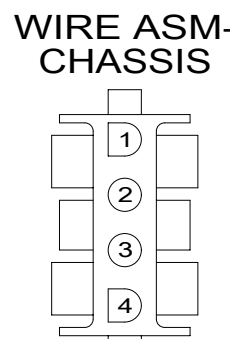
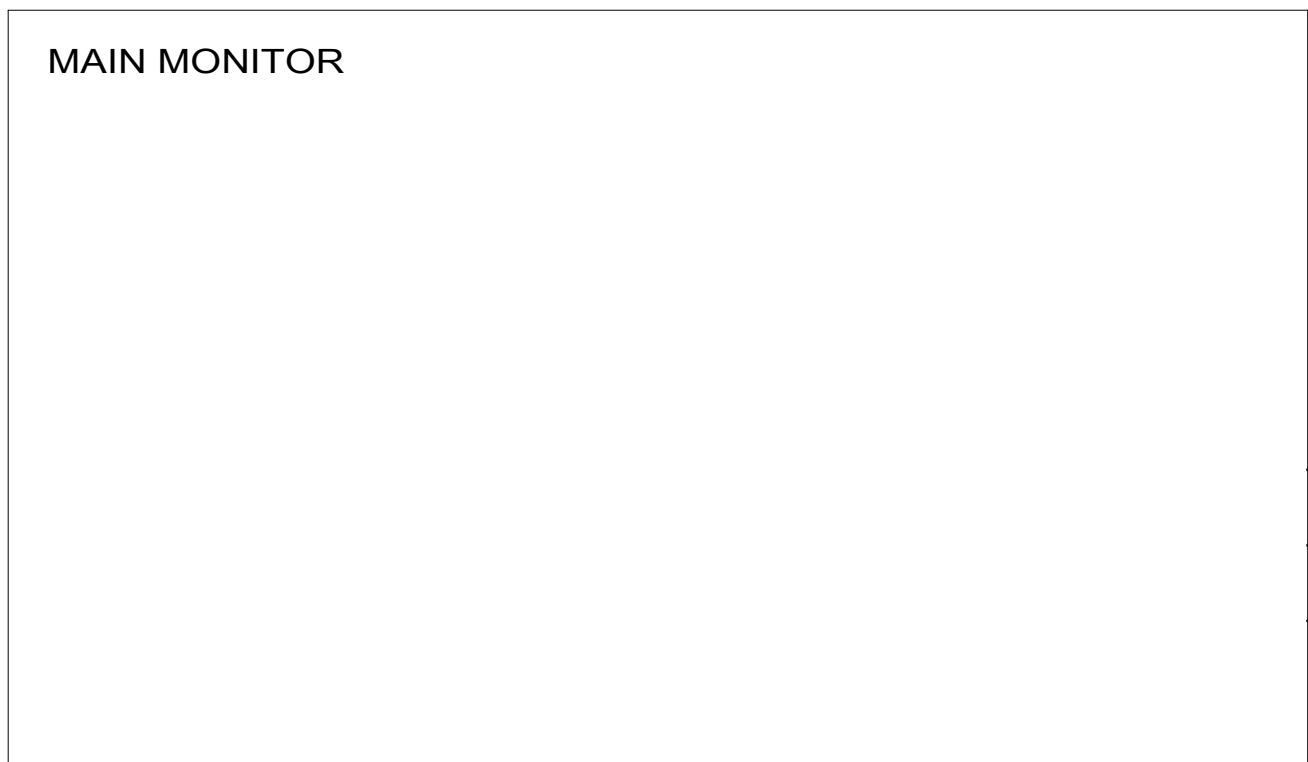
B

A

D

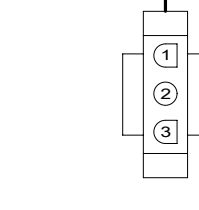
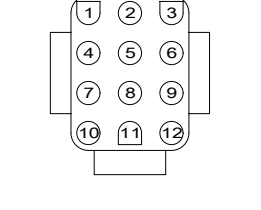
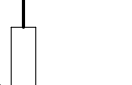
C

B



BRACKET-CLAMP,HDMI
000038736 / 318986-01-CHT
TAPE-FOAM DBL COATED
076322-22-000 (40 MM)

RADIO-INFOTAINMENT, 9"
000025353 /315254-01-000
REMOTE
176654-04-000
RADIO-KIT,SXM
000111632 / 321635-01-000
TEMP SENSOR
176654-13-000
ADAPTOR-ANTENNA
114366-01-000



- NOTES:
- 3 WIRE TIE TO DASH RADIO WIRING BEHIND THE RADIO.
 - 2 PLUG CABLE INTO LEAD ON BACK OF RADIO.
 - 1 MOUNT GPS ANTENNA TO TOP OF DEFROST PLENUM BEHIND RADIO.

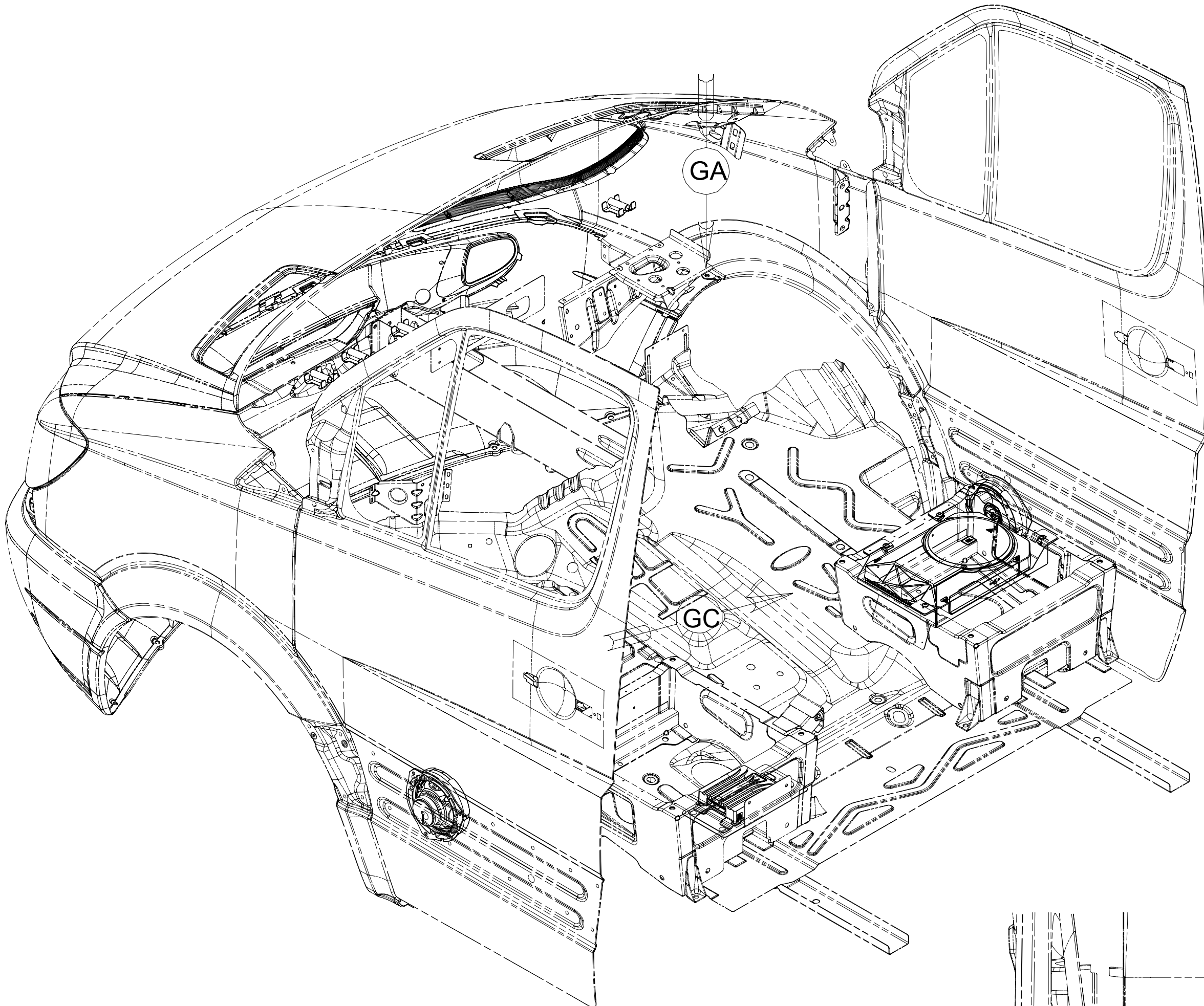
FOR ELECTRICAL TORQUE SPECIFICATIONS SEE DWG NO. 128783-01-000

FOR ELECTRICAL CALLOUTS SEE DWG NO. 121339-01-000

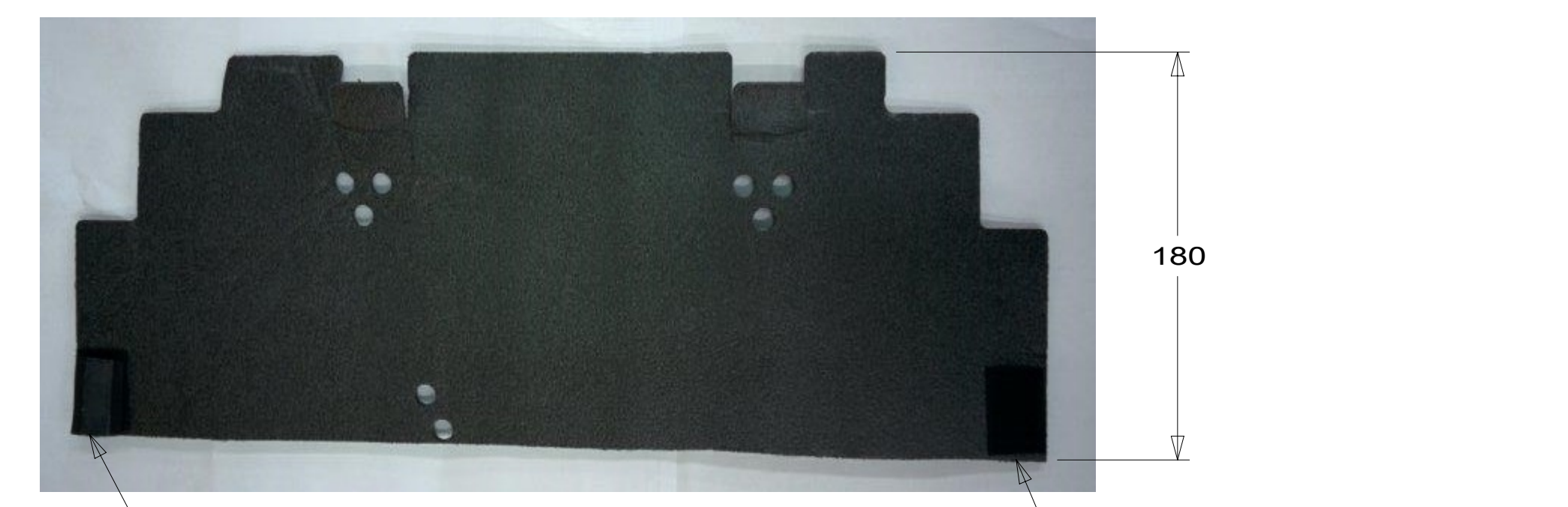
- 153 LG SCREEN-INFO/GPS SIRIUSXM
- 265 CODES/STANDARDS-CSA/CMVSS
- 1B1 CODES/STANDARDS USA

DESCRIPTION: WIRING INSTL-CHASSIS		
SHEET: 6 OF 7	ITEM/PART NO: 000112028 / 32261501000	REV

8 7 6 5 4 3 2 1



DETAIL GC
LOGO-JBL
302951-01-000 (2) 1



VELCRO- 1/2"
088792-08-000 (50 MM)
TAPE
086276-01-000 (2) (50 MM)

DETAIL GB 4

2
SPEAKER-6.25",
MIDRANGE,JBL
194528-01-000
SPACER-SPEAKER
000025517 / 315320-01-000
ADAPTER-SPEAKER,
SPRINTER
194530-01-000

WIRE ASM-CHASSIS
(REFERENCE)

3
WIRE ASM-AMP, INPUT
194532-01-000
WIRE ASM-AMP, OUTPUT
194532-02-000

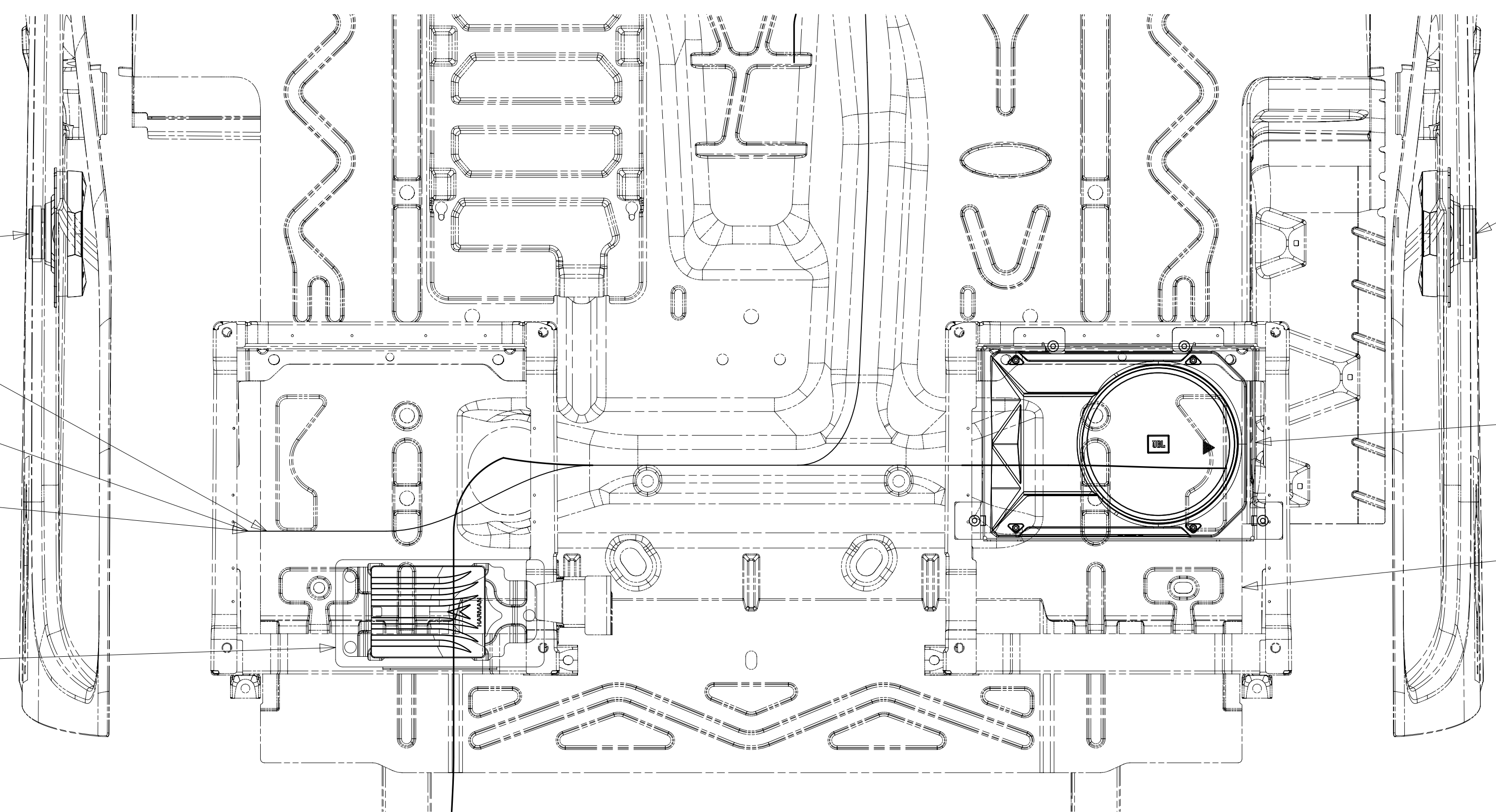
AMPLIFIER-PREMIUM AUDIO,100
000031855 / 312664-02-000
PANEL-AMPLIFIER
195229-01-CHT
RIVET
165072-01-CHT (3)
NUT
OMD54F-06-000 (2)

2
SPEAKER-6.25",
MIDRANGE,JBL
194528-01-000
SPACER-SPEAKER
000025517 / 315320-01-000
ADAPTER-SPEAKER,
SPRINTER
194530-01-000

5
SUBWOOFER ASM-SUB W/ BRACKET
000025680 / 315383-01-XXX

COVER-SEAT
DETAIL GB

- 5 RELOCATE 4WD MODULE TO SUBWOOFER BRACKET WHEN NEEDED.
- 4 CUT SEAT PEDESTAL COVER THAT IS SUPPLIED WITH CHASSIS. PLACE COVER SO THAT IT DOES NOT COVER SUBWOOFER. SECURE COVER IN PLACE WITH VELCRO.
- 3 WITH 57P CONNECT 15 PIN HSGS FROM WIRE ASM-CHASSIS TO WIRE ASM-AMP WITHOUT 57P CONNECT 15 PIN HSGS IN WIRE ASM-CHASSIS TOGETHER.
- 2 REPLACE FACTORY DOOR SPEAKER WITH SPEAKER CALLED OUT.
- 1 CENTER ON BOTTOM OF SPEAKER GRILL ON DOOR PANEL. CLEAN SURFACE WITH PROMOTER 087211-01-000.



VIEW GA

- 57P RADIO SPEAKERS-PREMIUM SOUND
- 265 CODES/STANDARDS-CSA/CMVSS
- 1B1 CODES/STANDARDS USA

FOR ELECTRICAL TORQUE SPECIFICATIONS SEE DWG NO. 128783-01-000

FOR ELECTRICAL CALLOUTS SEE DWG NO. 121339-01-000

DESCRIPTION: WIRING INSTL-CHASSIS		
SHEET: 7 OF 7	ITEM/PART NO.: 000112028 / 32261501000	REV