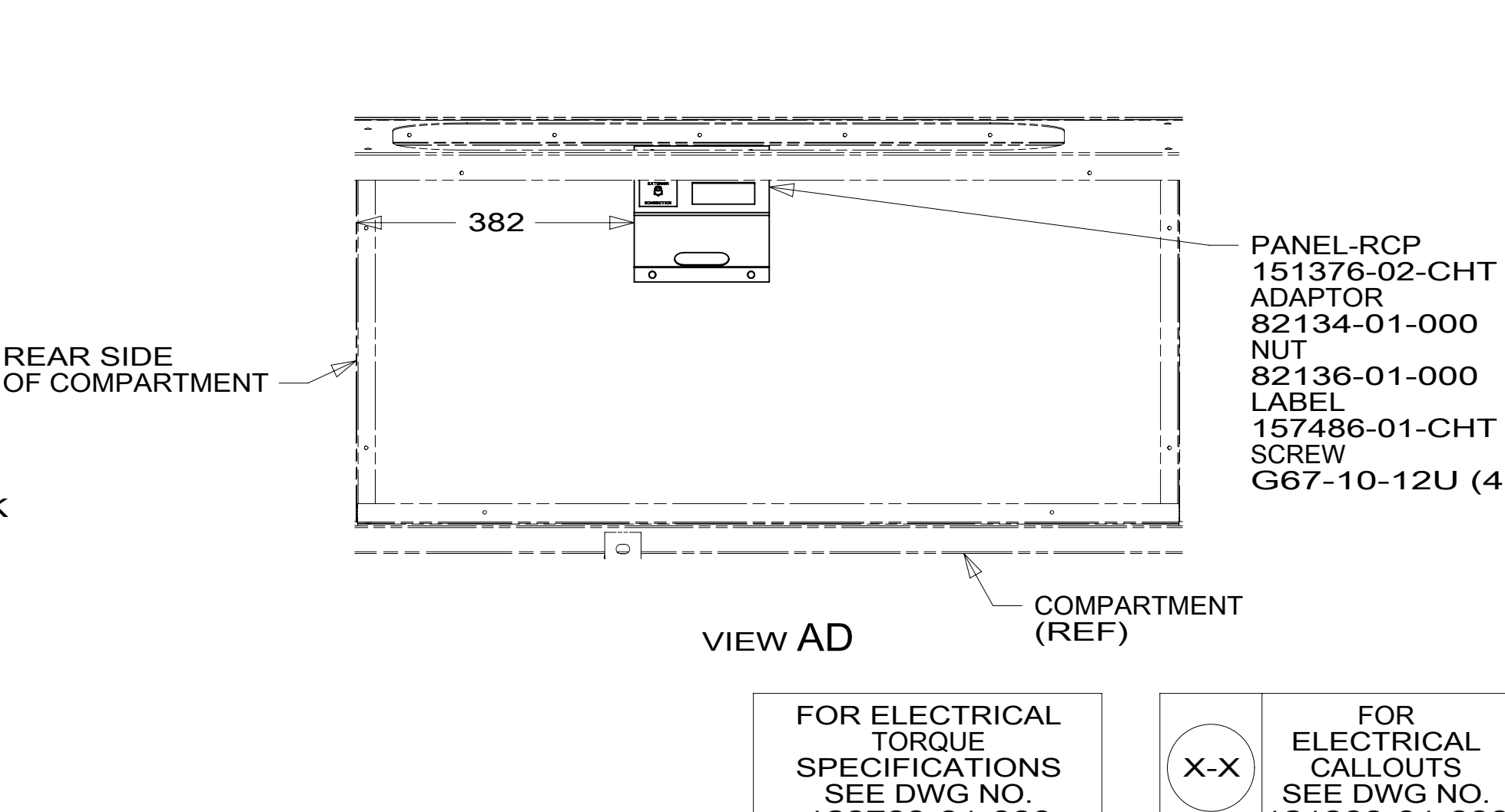
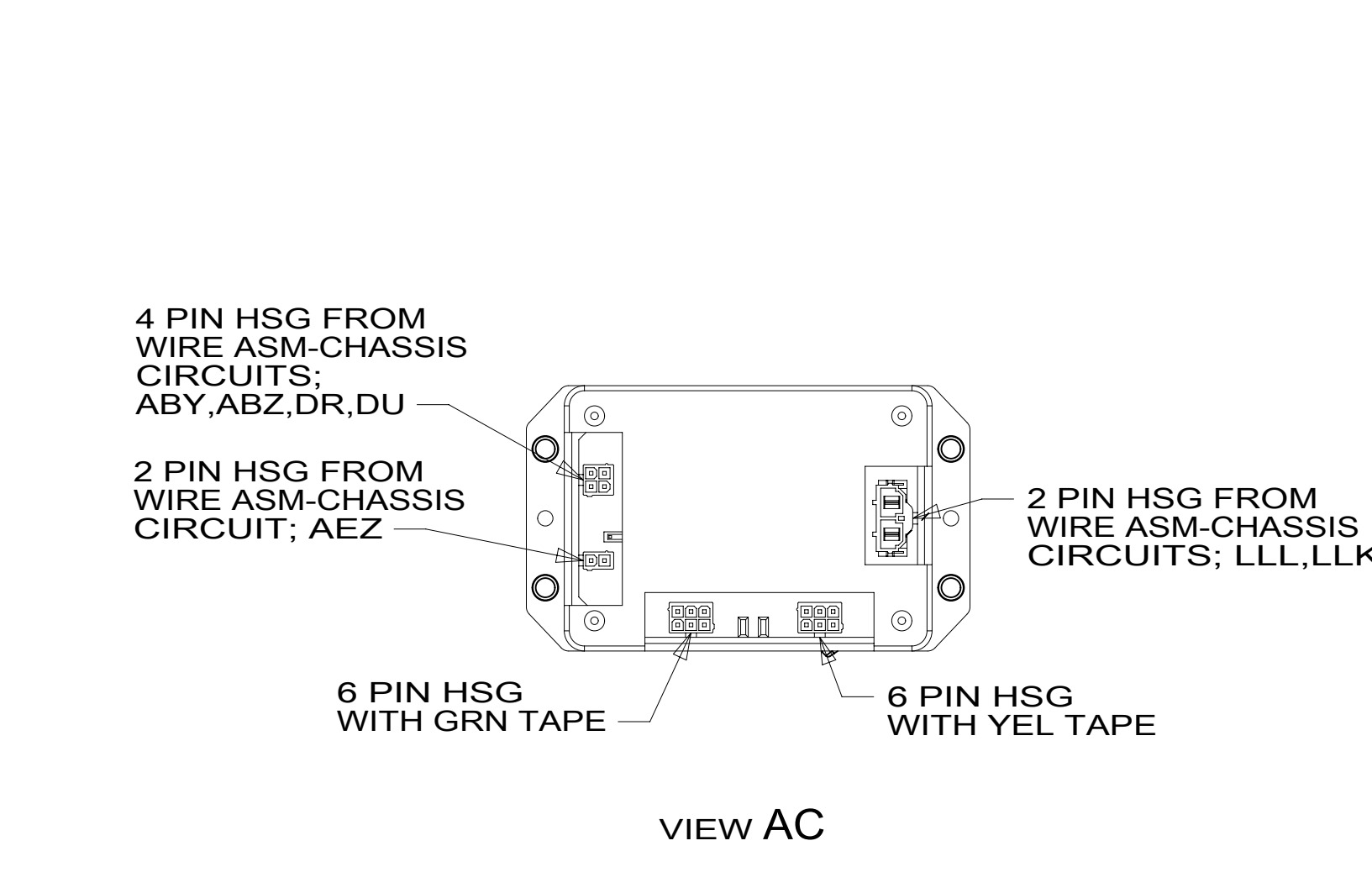


- 6 SPLICE YELLOW TO RED AND WHITE TO BLACK.
- 5 SECURE WIRE ASM TO HOLDING TANK CRADLE ASM.
- 4 WIRE PASSES THROUGH FLOOR IN THIS AREA.
- 3 PLACE CROSS LOCATOR ON SENSORS OVER DIMPLES ON TANK.
2. ROUTE TANK SENSOR WIRES SO THEY DO NOT PASSOVER SENSORS. USE WIRE TIE MOUNT 155366-01-000 AND WIRE TIE 8343-01-000 AS NEEDED. TANK SURFACE MUST BE CLEANED USING ISOPROPYL ALCOHOL AND PRIMED WITH PRIMER 94.
1. AT MINIMUM ALL WIRES TO BE SUPPORTED AND SECURED PER CODE REQUIREMENTS. USE CLAMP 10495 OR 10497 OR WIRE TIE 8343 OR 108046 AND SCREW G67-XX-XXX OR G56-XX-XXX AS APPROPRIATE FOR INSTALLATION.



- 23R DRAINAGE SYSTEM/HEAT-PREWIRE
- 64A JACKS-STABILIZING, ELECTRIC
- 23T DRAINAGE SYSTEM-HEATED
- 265 CODES/STANDARDS-CSA/CMVSS
- 1B1 CODES/STANDARDS USA

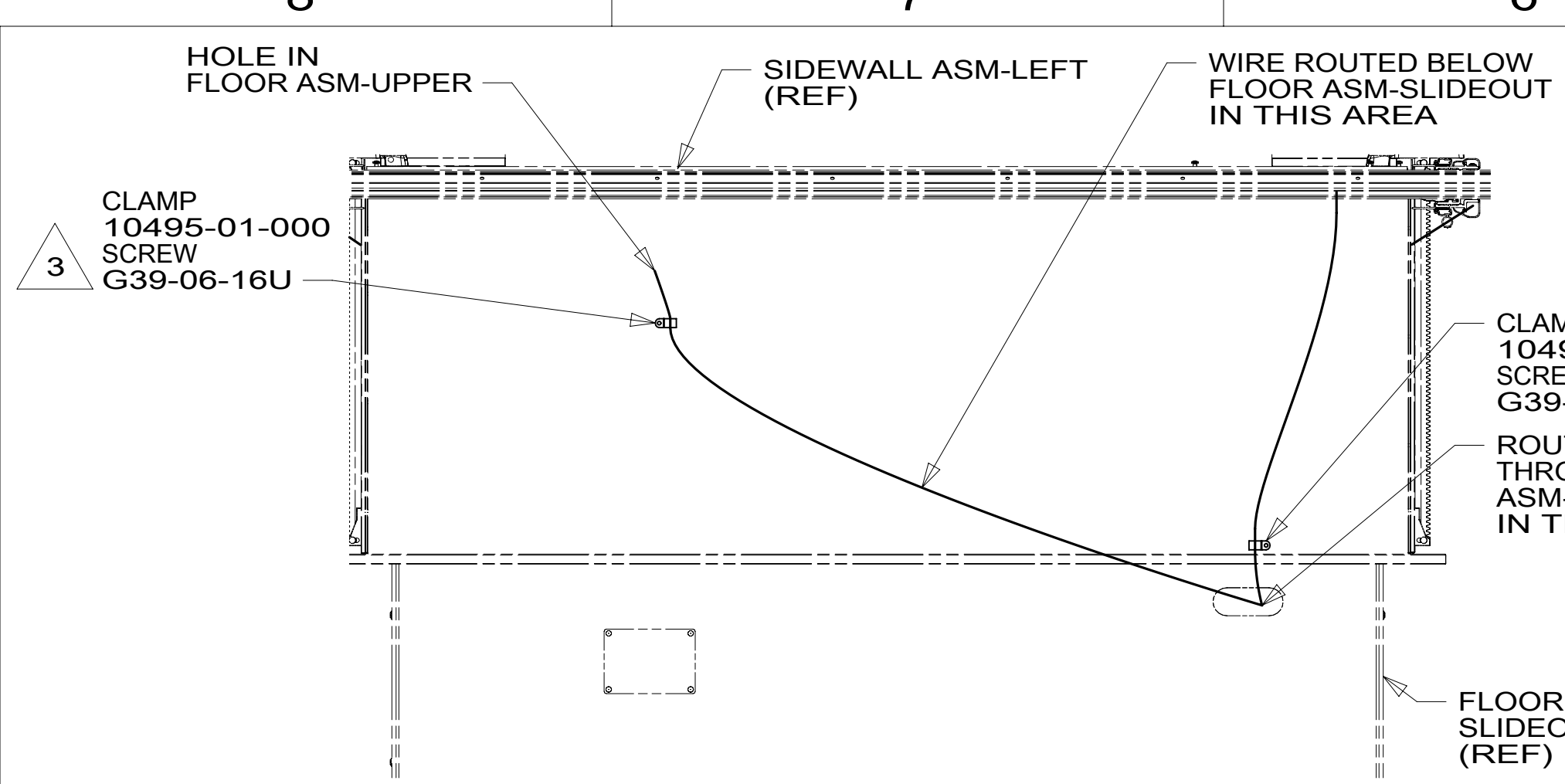
1B1 265

COPYRIGHT 2016 WINNEBAGO INDUSTRIES, INC.

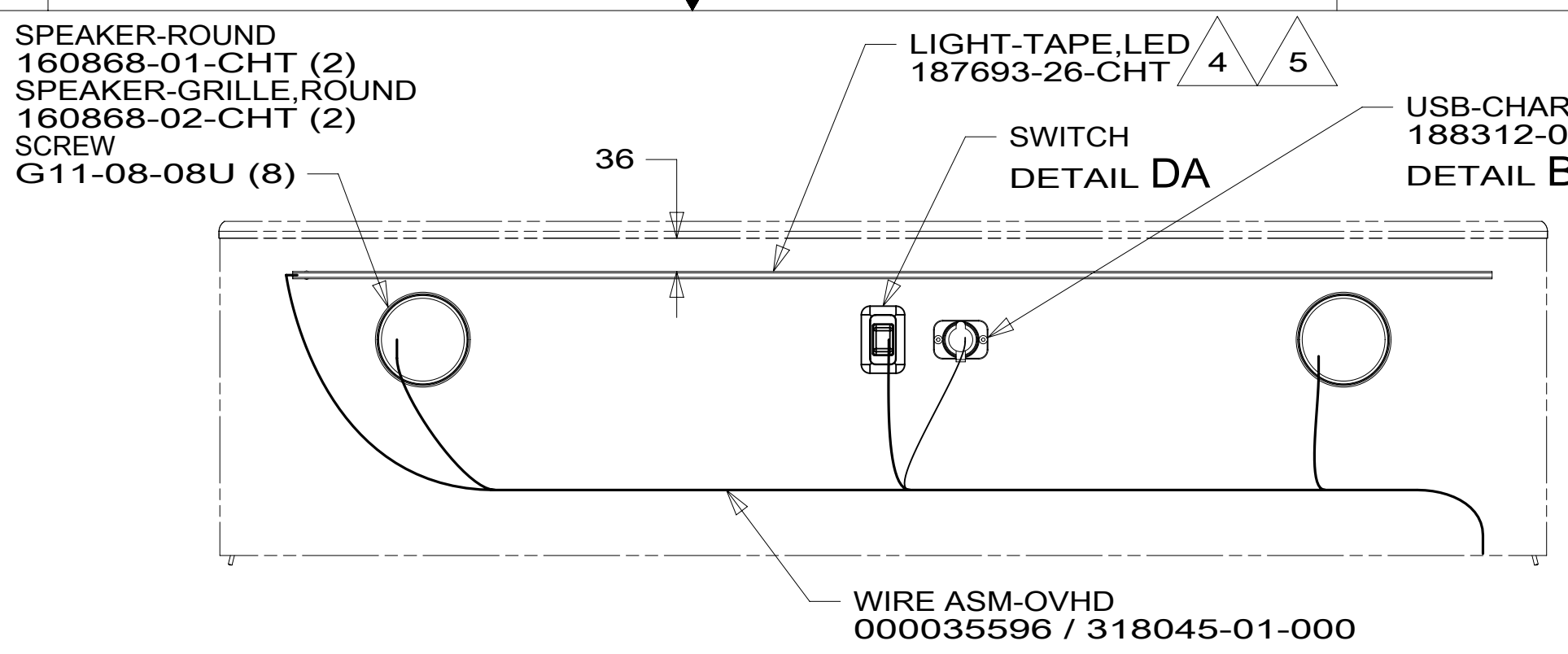
DSNR:	ALL DIMENSIONS ARE IN MILLIMETERS	
DFFR:	MATERIAL:	
UNSPECIFIED TOLERANCES:		
WHOLE DIM (X)	: 3	
ONE-PLACE (X.X)	: 1.5	
TWO-PLACE (X.XX)	: 0.50	
ANGLE	: 1°	
REFER TO ES0018 FOR FASTENER TIGHTENING GUIDELINES	WEIGHT: (LBS)	FIRST USED:
		18 524V
DESCRIPTION:		
WIRING INSTL-BODY, 12V		
SHEET:	ITEM/PART NO.	REV
1 OF 7	000110332 / 32153801000	

FOR ELECTRICAL TORQUE SPECIFICATIONS SEE DWG NO. 128783-01-000

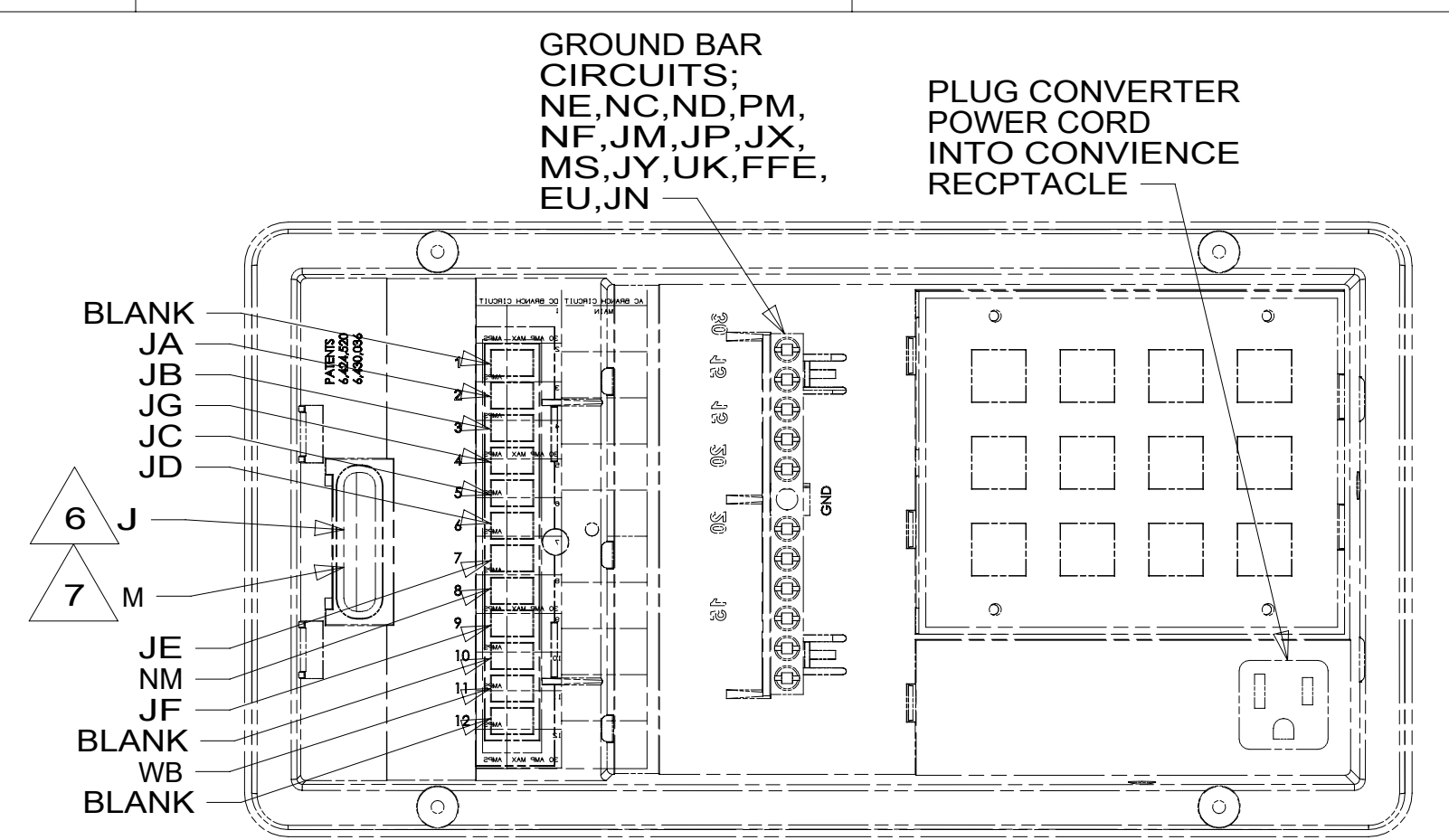
FOR ELECTRICAL CALLOUTS SEE DWG NO. 121339-01-000



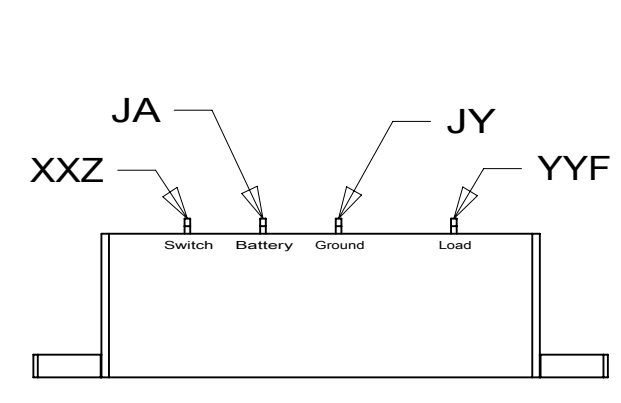
VIEW BB



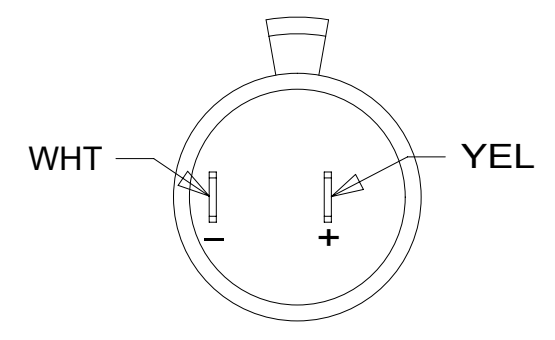
VIEW BA



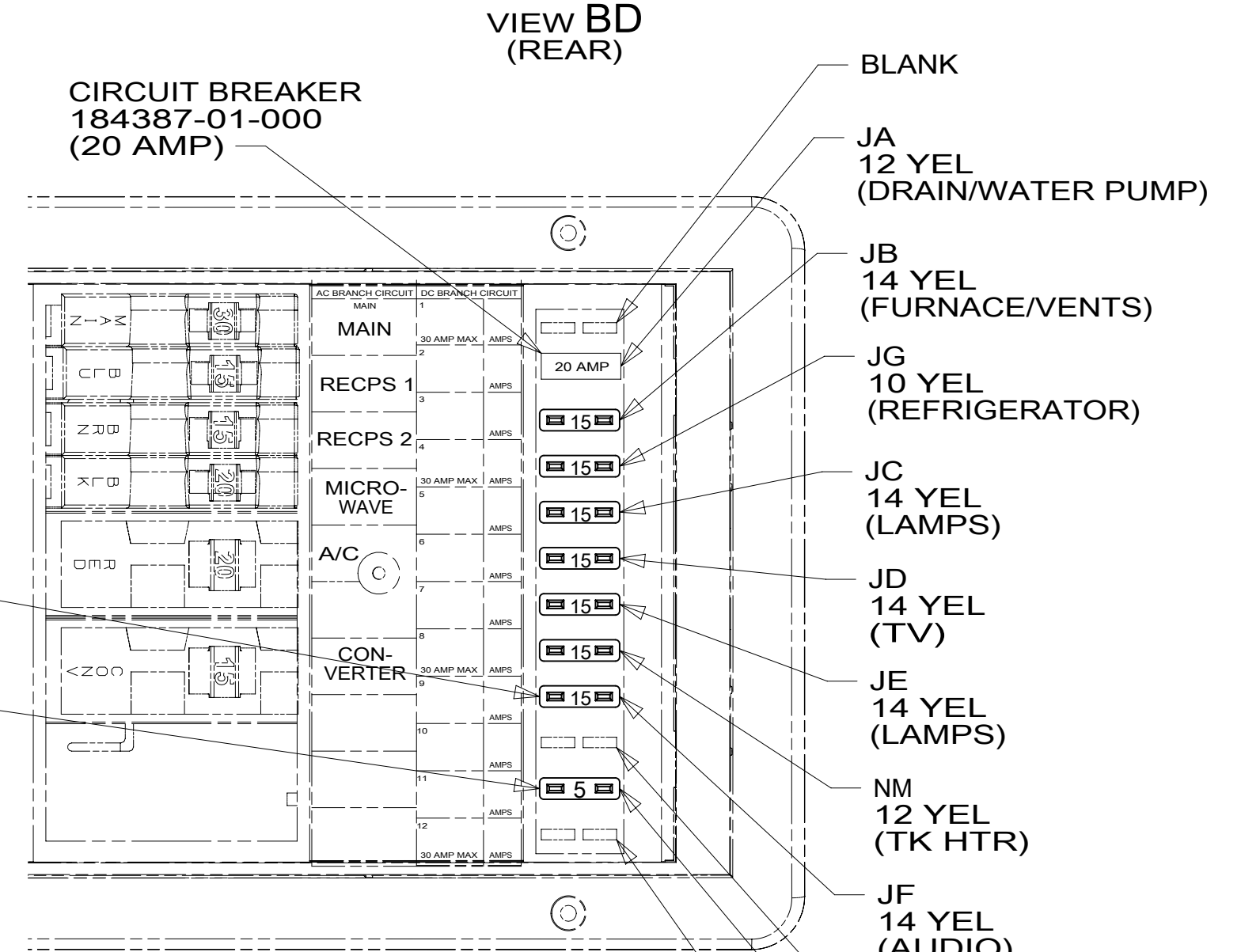
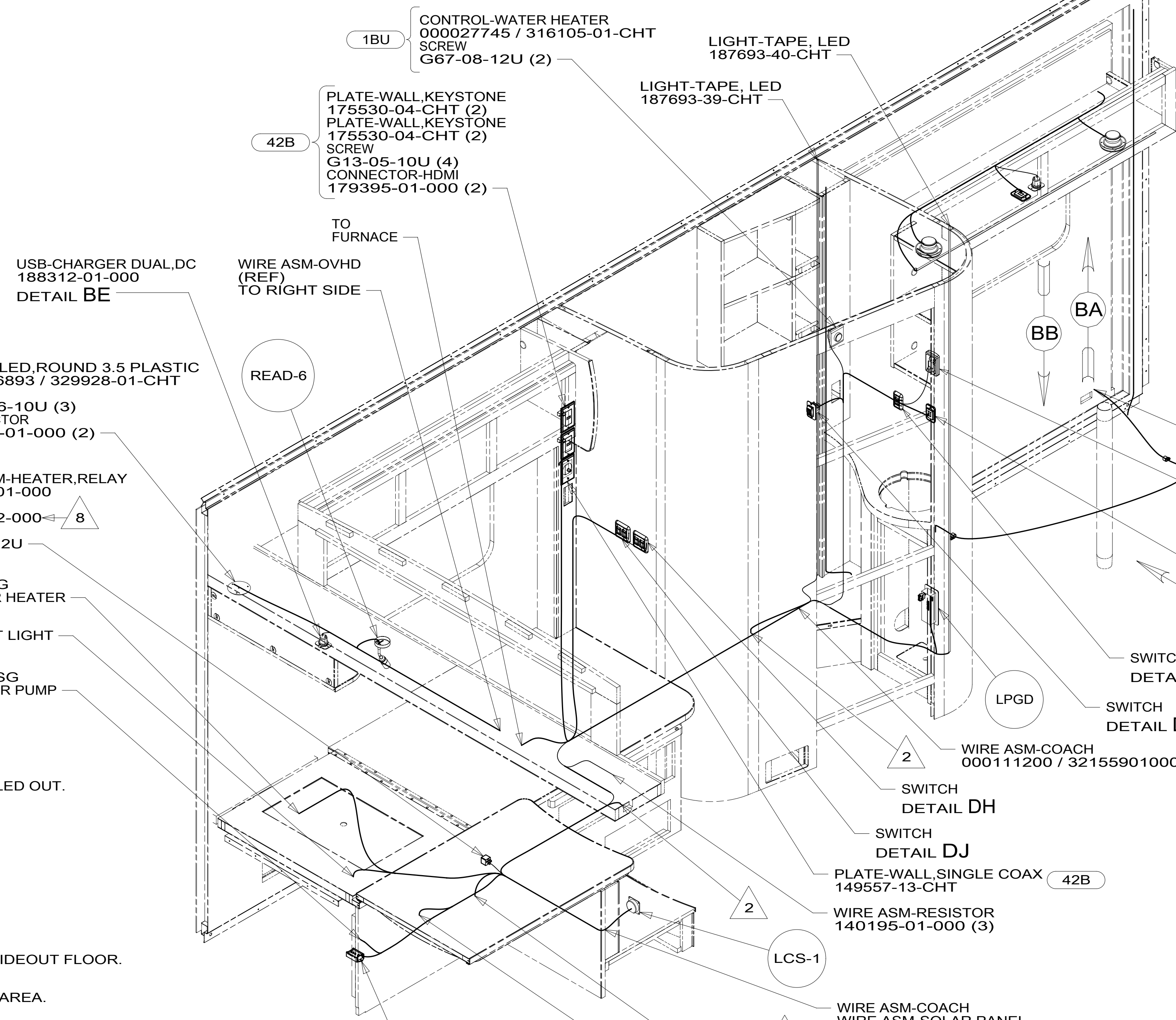
VIEW BD (REAR)



DETAIL BC



DETAIL BE



VIEW BD (FRONT)

- 8 SECURE ABOVE FLOOR WITH SCREW CALLED OUT.
- 7 CIRCUIT FROM WIRE ASM-COACH.
- 6 CIRCUIT FROM WIRE ASM-CHASSIS.
- 5 CLEAN SURFACE WITH CLEAN TOWEL.
- 4 CENTER LIGHT STRIP.
- 3 CLAMP TO BE ATTACHED TO EDGE OF SLIDEOUT FLOOR.
- 2 WIRE PASSES THROUGH FLOOR IN THIS AREA.

1. AT MINIMUM ALL WIRES TO BE SUPPORTED AND SECURED PER CODE REQUIREMENTS. USE CLAMP 10495 OR 10497 OR WIRE TIE 8343 OR 108046 AND SCREW G67-XX-XXX OR G56-XX-XXX AS APPROPRIATE FOR INSTALLATION.

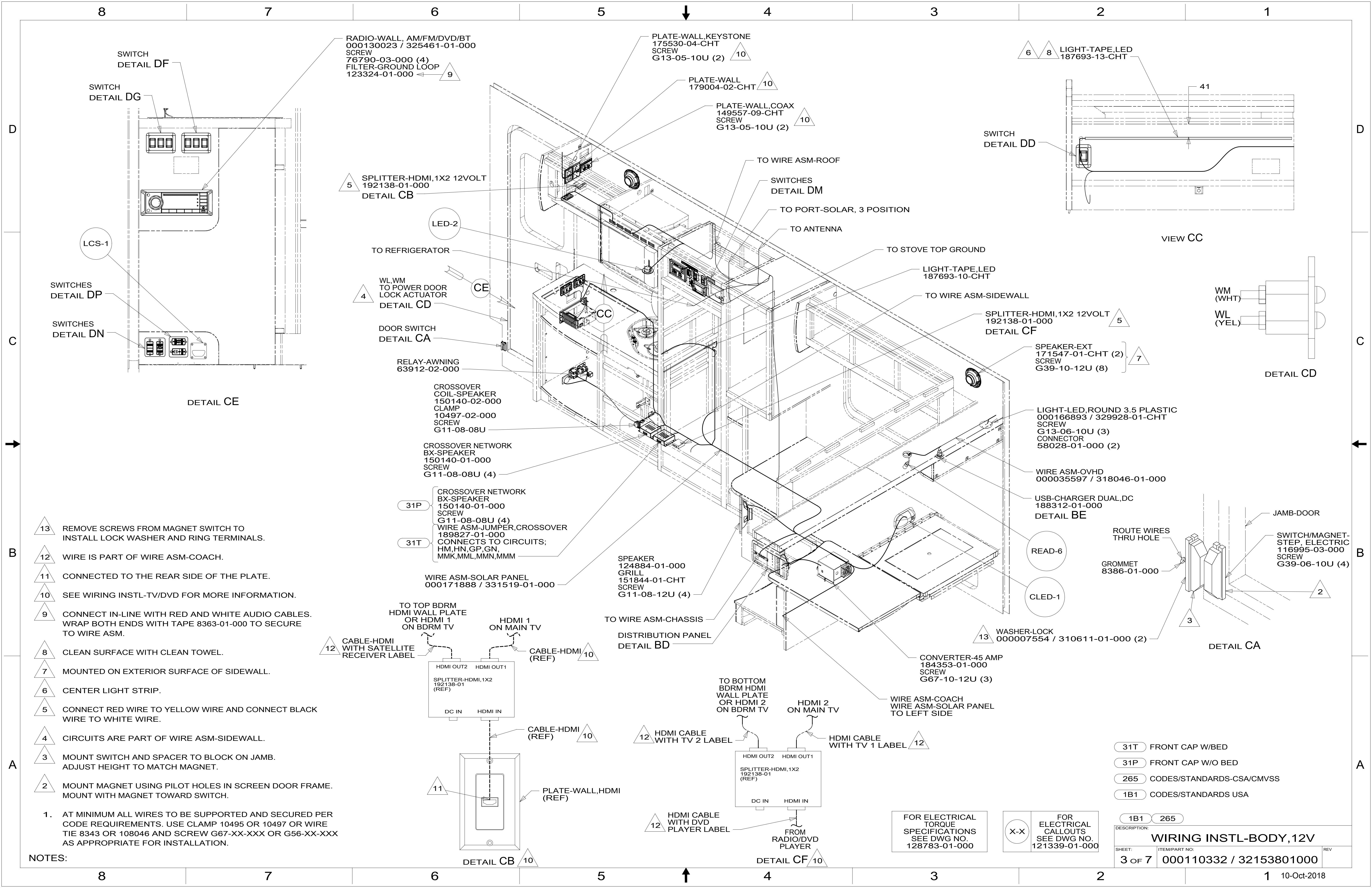
NOTES:

FOR ELECTRICAL TORQUE SPECIFICATIONS SEE DWG NO. 128783-01-000

FOR ELECTRICAL CALLOUTS SEE DWG NO. 121339-01-000

- 1BU WTR HTR TKLS W/RECIRCUL PUMP
- 42B TV,REAR-WITHOUT
- 29Z A/C 14,800 - HEAT PUMP
- 25Q A/C ROOF-MOUNT
- 23T DRAINAGE SYSTEM-HEATED
- 23R DRAINAGE SYSTEM/HEAT-PREWIRE
- 265 CODES/STANDARDS-CSA/CMVSS
- 1B1 CODES/STANDARDS USA

DESCRIPTION: **WIRING INSTL-BODY, 12V**  
 SHEET: 2 OF 7 ITEM PART NO: 000110332 / 32153801000 REV



RADIO-WALL, AM/FM/DVD/BT  
000130023 / 325461-01-000  
SCREW  
76790-03-000 (4)  
FILTER-GROUND LOOP  
123324-01-000

PLATE-WALL,KEYSTONE  
175530-04-CHT  
SCREW  
G13-05-10U (2)

LIGHT-TAPE,LED  
187693-13-CHT

SWITCH  
DETAIL DF  
SWITCH  
DETAIL DG

PLATE-WALL  
179004-02-CHT

PLATE-WALL,COAX  
149557-09-CHT  
SCREW  
G13-05-10U (2)

SWITCH  
DETAIL DD

SPLITTER-HDMI,1X2 12VOLT  
192138-01-000  
DETAIL CB

TO WIRE ASM-ROOF

SWITCHES  
DETAIL DM

TO PORT-SOLAR, 3 POSITION

TO ANTENNA

TO STOVE TOP GROUND

LIGHT-TAPE,LED  
187693-10-CHT

TO WIRE ASM-SIDEWALL

SPLITTER-HDMI,1X2 12VOLT  
192138-01-000  
DETAIL CF

SPEAKER-EXT  
171547-01-CHT (2)  
SCREW  
G39-10-12U (8)

LIGHT-LED,ROUND 3.5 PLASTIC  
000166893 / 329928-01-CHT  
SCREW  
G13-06-10U (3)  
CONNECTOR  
58028-01-000 (2)

WIRE ASM-OVHD  
000035597 / 318046-01-000

USB-CHARGER DUAL,DC  
188312-01-000  
DETAIL BE

READ-6

CLED-1

WASHER-LOCK  
000007554 / 310611-01-000 (2)

CONVERTER-45 AMP  
184353-01-000  
SCREW  
G67-10-12U (3)

WIRE ASM-COACH  
WIRE ASM-SOLAR PANEL  
TO LEFT SIDE

SPEAKER  
124884-01-000  
GRILL  
151844-01-CHT  
SCREW  
G11-08-12U (4)

TO WIRE ASM-CHASSIS

DISTRIBUTION PANEL  
DETAIL BD

CROSSOVER  
COIL-SPEAKER  
150140-02-000  
CLAMP  
10497-02-000  
SCREW  
G11-08-08U

CROSSOVER NETWORK  
BX-SPEAKER  
150140-01-000  
SCREW  
G11-08-08U (4)

CROSSOVER NETWORK  
BX-SPEAKER  
150140-01-000  
SCREW  
G11-08-08U (4)  
WIRE ASM-JUMPER,CROSSOVER  
189827-01-000  
CONNECTS TO CIRCUITS;  
HM,HN,GP,GN,  
MMK,MML,MMN,MMM

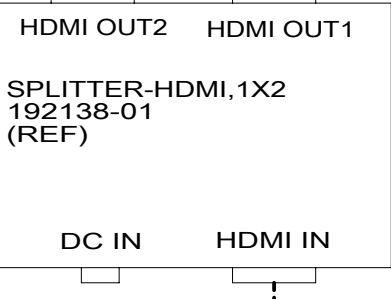
WIRE ASM-SOLAR PANEL  
000171888 / 331519-01-000

TO TOP BDRM  
HDMI WALL PLATE  
OR HDMI 1  
ON BDRM TV

HDMI 1  
ON MAIN TV

CABLE-HDMI  
(REF)

CABLE-HDMI  
WITH SATELLITE  
RECEIVER LABEL



CABLE-HDMI  
(REF)

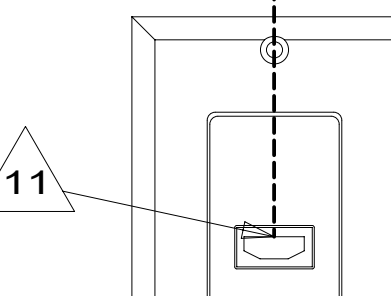


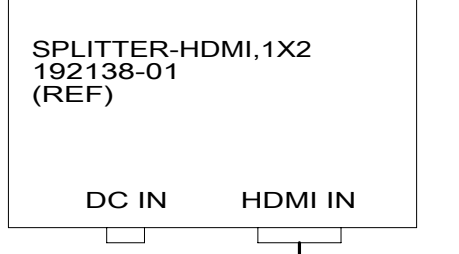
PLATE-WALL,HDMI  
(REF)

TO BOTTOM  
BDRM HDMI  
WALL PLATE  
OR HDMI 2  
ON BDRM TV

HDMI 2  
ON MAIN TV

HDMI CABLE  
WITH TV 2 LABEL

HDMI CABLE  
WITH TV 1 LABEL



HDMI CABLE  
WITH DVD  
PLAYER LABEL

FROM  
RADIO/DVD  
PLAYER

FOR ELECTRICAL  
TORQUE  
SPECIFICATIONS  
SEE DWG NO.  
128783-01-000

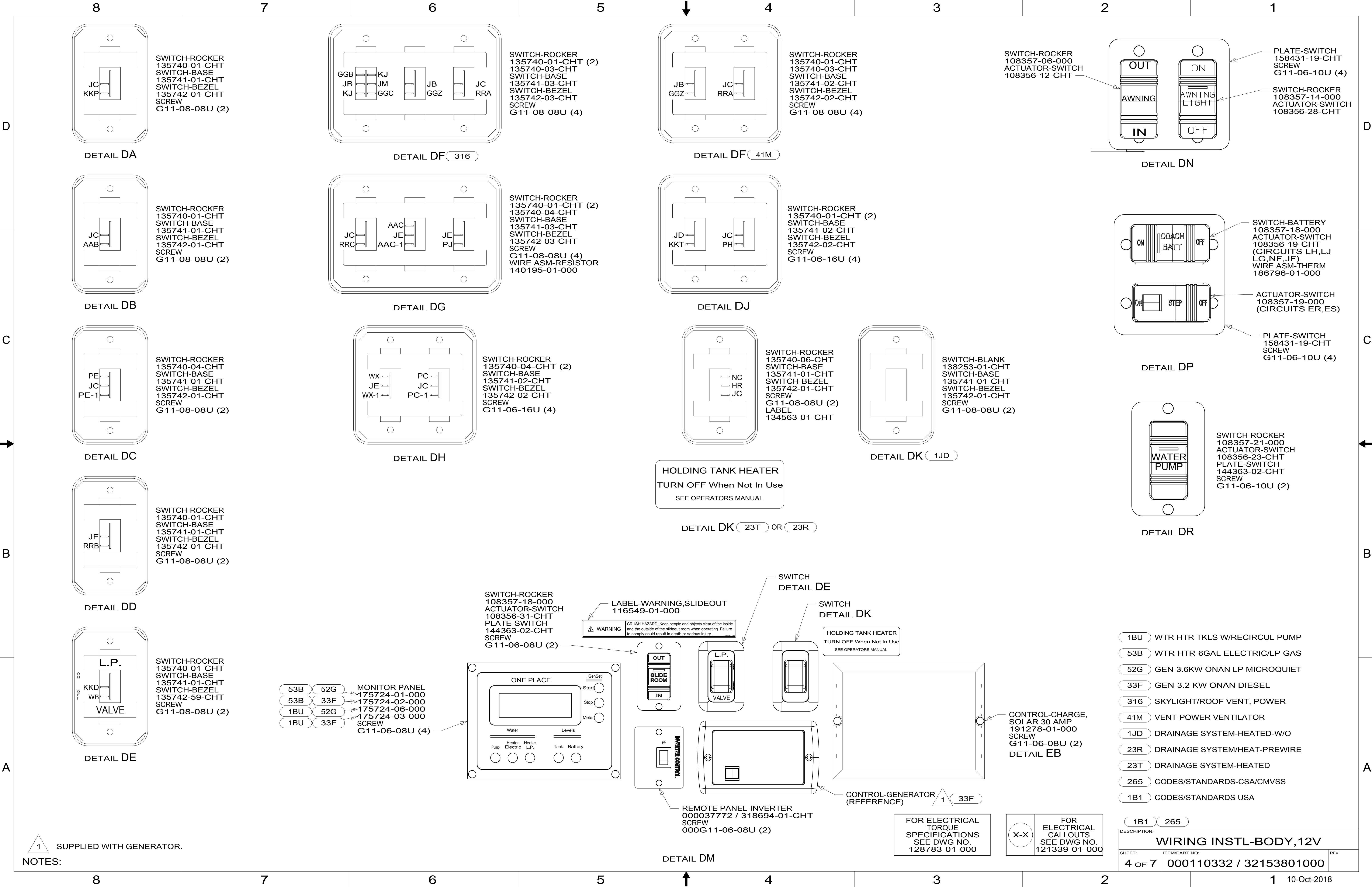
FOR  
ELECTRICAL  
CALLOUTS  
SEE DWG NO.  
121339-01-000

- 31T FRONT CAP W/BED
- 31P FRONT CAP W/O BED
- 265 CODES/STANDARDS-CSA/CMVSS
- 1B1 CODES/STANDARDS USA

DESCRIPTION:  
**WIRING INSTL-BODY, 12V**  
SHEET: 3 OF 7 ITEM/PART NO: 000110332 / 32153801000 REV

- 13 REMOVE SCREWS FROM MAGNET SWITCH TO INSTALL LOCK WASHER AND RING TERMINALS.
- 12 WIRE IS PART OF WIRE ASM-COACH.
- 11 CONNECTED TO THE REAR SIDE OF THE PLATE.
- 10 SEE WIRING INSTL-TV/DVD FOR MORE INFORMATION.
- 9 CONNECT IN-LINE WITH RED AND WHITE AUDIO CABLES. WRAP BOTH ENDS WITH TAPE 8363-01-000 TO SECURE TO WIRE ASM.
- 8 CLEAN SURFACE WITH CLEAN TOWEL.
- 7 MOUNTED ON EXTERIOR SURFACE OF SIDEWALL.
- 6 CENTER LIGHT STRIP.
- 5 CONNECT RED WIRE TO YELLOW WIRE AND CONNECT BLACK WIRE TO WHITE WIRE.
- 4 CIRCUITS ARE PART OF WIRE ASM-SIDEWALL.
- 3 MOUNT SWITCH AND SPACER TO BLOCK ON JAMB. ADJUST HEIGHT TO MATCH MAGNET.
- 2 MOUNT MAGNET USING PILOT HOLES IN SCREEN DOOR FRAME. MOUNT WITH MAGNET TOWARD SWITCH.

1. AT MINIMUM ALL WIRES TO BE SUPPORTED AND SECURED PER CODE REQUIREMENTS. USE CLAMP 10495 OR 10497 OR WIRE TIE 8343 OR 108046 AND SCREW G67-XX-XXX OR G56-XX-XXX AS APPROPRIATE FOR INSTALLATION.



SWITCH-ROCKER  
135740-01-CHT  
SWITCH-BASE  
135741-01-CHT  
SWITCH-BEZEL  
135742-01-CHT  
SCREW  
G11-08-08U (2)

DETAIL DA

SWITCH-ROCKER  
135740-01-CHT  
SWITCH-BASE  
135741-01-CHT  
SWITCH-BEZEL  
135742-01-CHT  
SCREW  
G11-08-08U (2)

DETAIL DB

SWITCH-ROCKER  
135740-04-CHT  
SWITCH-BASE  
135741-01-CHT  
SWITCH-BEZEL  
135742-01-CHT  
SCREW  
G11-08-08U (2)

DETAIL DC

SWITCH-ROCKER  
135740-01-CHT  
SWITCH-BASE  
135741-01-CHT  
SWITCH-BEZEL  
135742-01-CHT  
SCREW  
G11-08-08U (2)

DETAIL DD

SWITCH-ROCKER  
135740-01-CHT  
SWITCH-BASE  
135741-01-CHT  
SWITCH-BEZEL  
135742-59-CHT  
SCREW  
G11-08-08U (2)

DETAIL DE

GGB KJ  
JB JM  
KJ GGC JB GGZ  
JC RRA

DETAIL DF 316

JC AAC  
RRC AAC-1 JE PJ

DETAIL DG

WX PC  
JE JC  
WX-1 PC-1

DETAIL DH

SWITCH-ROCKER  
135740-01-CHT (2)  
135740-03-CHT  
SWITCH-BASE  
135741-03-CHT  
SWITCH-BEZEL  
135742-03-CHT  
SCREW  
G11-08-08U (4)

SWITCH-ROCKER  
135740-01-CHT (2)  
135740-04-CHT  
SWITCH-BASE  
135741-03-CHT  
SWITCH-BEZEL  
135742-03-CHT  
SCREW  
G11-08-08U (4)  
WIRE ASM-RESISTOR  
140195-01-000

SWITCH-ROCKER  
135740-04-CHT (2)  
SWITCH-BASE  
135741-02-CHT  
SWITCH-BEZEL  
135742-02-CHT  
SCREW  
G11-06-16U (4)

SWITCH-ROCKER  
108357-18-000  
ACTUATOR-SWITCH  
108356-31-CHT  
PLATE-SWITCH  
144363-02-CHT  
SCREW  
G11-06-08U (2)

SWITCH-ROCKER  
135740-01-CHT  
135740-03-CHT  
SWITCH-BASE  
135741-02-CHT  
SWITCH-BEZEL  
135742-02-CHT  
SCREW  
G11-08-08U (4)

DETAIL DF 41M

SWITCH-ROCKER  
135740-01-CHT (2)  
SWITCH-BASE  
135741-02-CHT  
SWITCH-BEZEL  
135742-02-CHT  
SCREW  
G11-06-16U (4)

DETAIL DJ

SWITCH-ROCKER  
135740-06-CHT  
SWITCH-BASE  
135741-01-CHT  
SWITCH-BEZEL  
135742-01-CHT  
SCREW  
G11-08-08U (2)  
LABEL  
134563-01-CHT

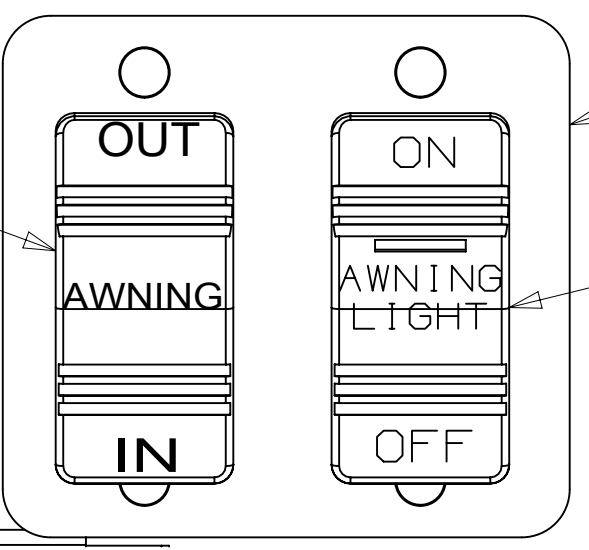
HOLDING TANK HEATER  
TURN OFF When Not In Use  
SEE OPERATORS MANUAL

DETAIL DK 23T OR 23R

SWITCH-BLANK  
138253-01-CHT  
SWITCH-BASE  
135741-01-CHT  
SWITCH-BEZEL  
135742-01-CHT  
SCREW  
G11-08-08U (2)

DETAIL DK 1JD

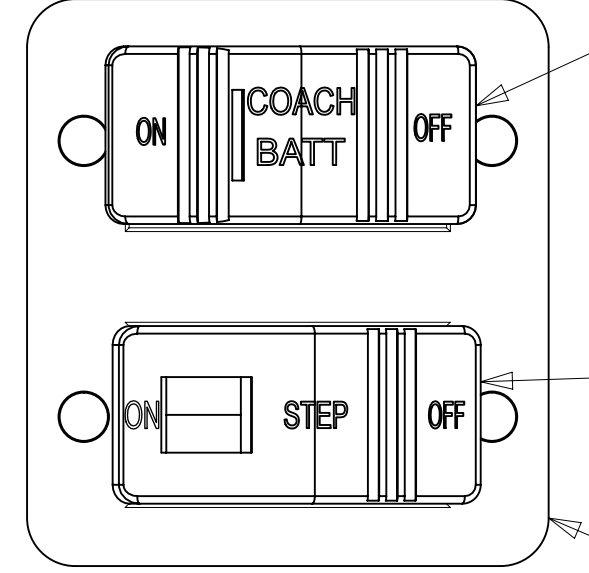
SWITCH-ROCKER  
108357-06-000  
ACTUATOR-SWITCH  
108356-12-CHT



DETAIL DN

PLATE-SWITCH  
158431-19-CHT  
SCREW  
G11-06-10U (4)

SWITCH-ROCKER  
108357-14-000  
ACTUATOR-SWITCH  
108356-28-CHT

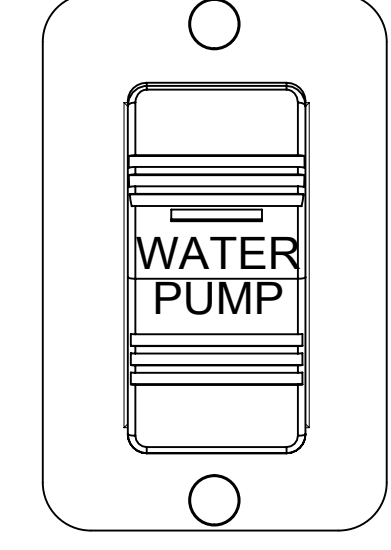


DETAIL DP

SWITCH-BATTERY  
108357-18-000  
ACTUATOR-SWITCH  
108356-19-CHT  
(CIRCUITS LH,LJ  
LG,NF,JF)  
WIRE ASM-THERM  
186796-01-000

ACTUATOR-SWITCH  
108357-19-000  
(CIRCUITS ER,ES)

PLATE-SWITCH  
158431-19-CHT  
SCREW  
G11-06-10U (4)

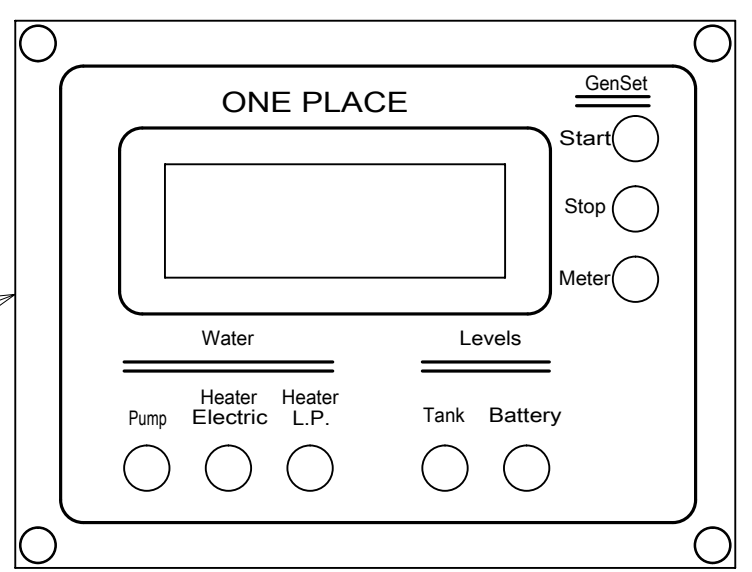


DETAIL DR

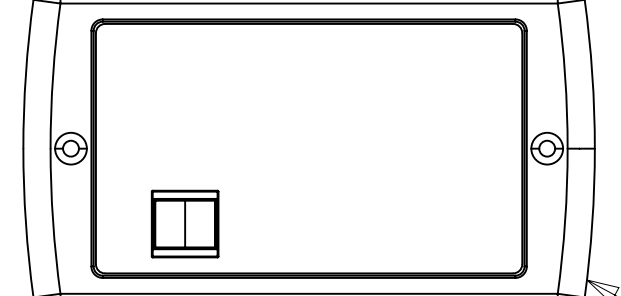
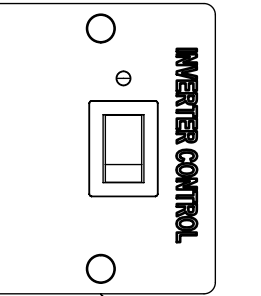
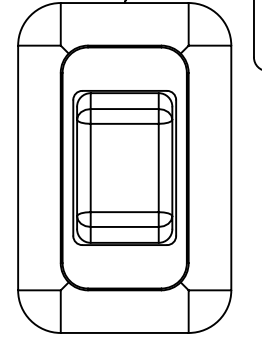
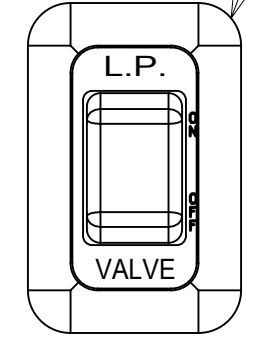
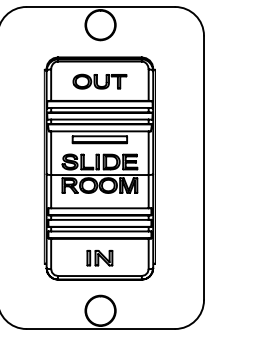
SWITCH-ROCKER  
108357-21-000  
ACTUATOR-SWITCH  
108356-23-CHT  
PLATE-SWITCH  
144363-02-CHT  
SCREW  
G11-06-10U (2)

- 53B 52G MONITOR PANEL
- 53B 33F 175724-01-000
- 1BU 52G 175724-02-000
- 1BU 33F 175724-06-000
- 1BU 33F 175724-03-000

SCREW  
G11-06-08U (4)



WARNING CRUSH HAZARD Keep people and objects clear of the inside and the outside of the slideout room when operating. Failure to comply could result in death or serious injury.

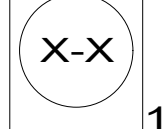


DETAIL DM

REMOTE PANEL-INVERTER  
000037772 / 318694-01-CHT  
SCREW  
000G11-06-08U (2)

FOR ELECTRICAL  
TORQUE  
SPECIFICATIONS  
SEE DWG NO.  
128783-01-000

FOR ELECTRICAL  
CALLOUTS  
SEE DWG NO.  
121339-01-000



- 1BU WTR HTR TKLS W/RECIRCUL PUMP
- 53B WTR HTR-6GAL ELECTRIC/LP GAS
- 52G GEN-3.6KW ONAN LP MICROQUIET
- 33F GEN-3.2 KW ONAN DIESEL
- 316 SKYLIGHT/ROOF VENT, POWER
- 41M VENT-POWER VENTILATOR
- 1JD DRAINAGE SYSTEM-HEATED-W/O
- 23R DRAINAGE SYSTEM/HEAT-PREWIRE
- 23T DRAINAGE SYSTEM-HEATED
- 265 CODES/STANDARDS-CSA/CMVSS
- 1B1 CODES/STANDARDS USA

DESCRIPTION: <b>WIRING INSTL-BODY, 12V</b>		
SHEET: 4 OF 7	ITEM/PART NO: 000110332 / 32153801000	REV

NOTES:  
1 SUPPLIED WITH GENERATOR.

A

A

B

B

C

C

D

D

D

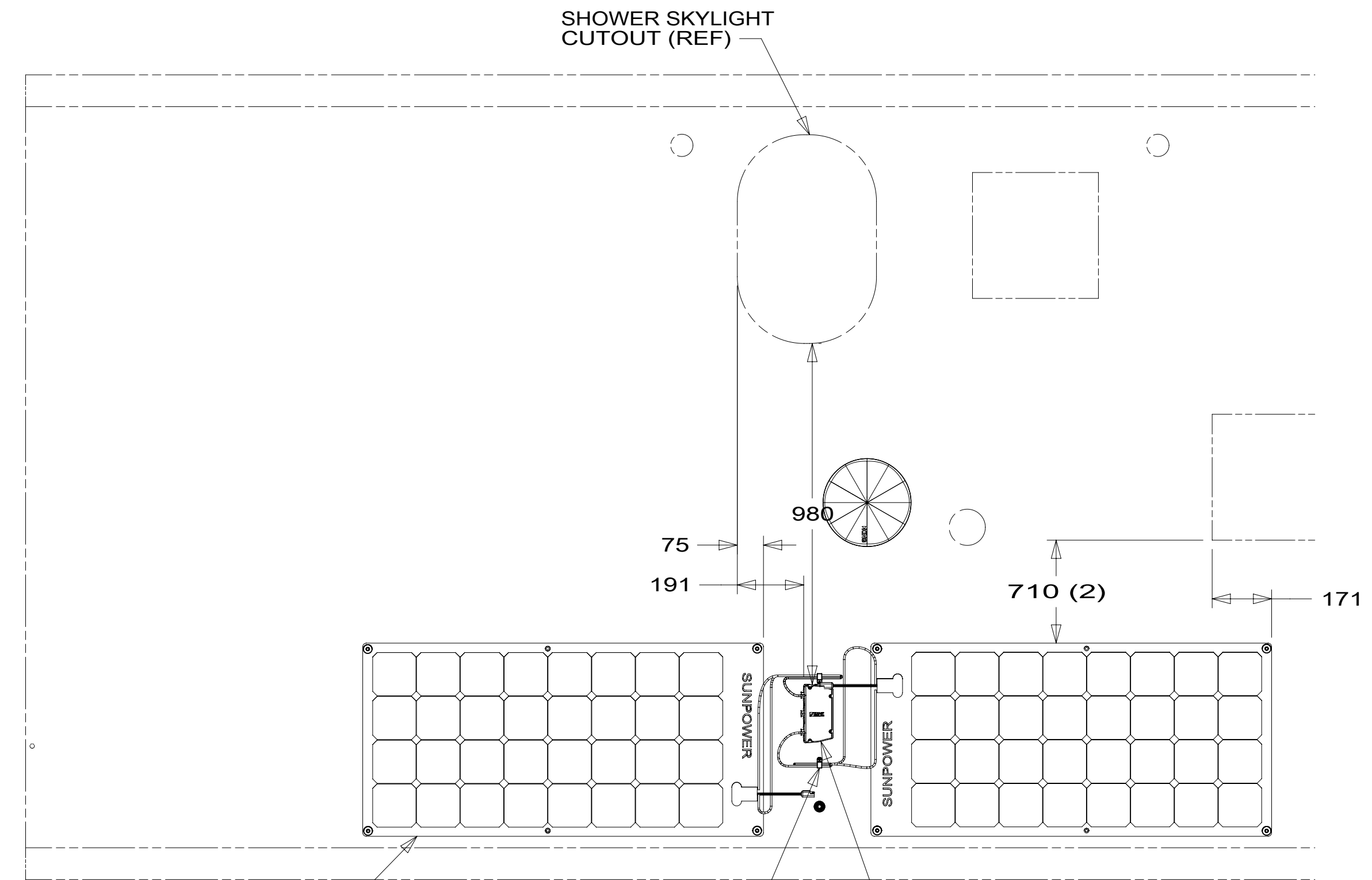
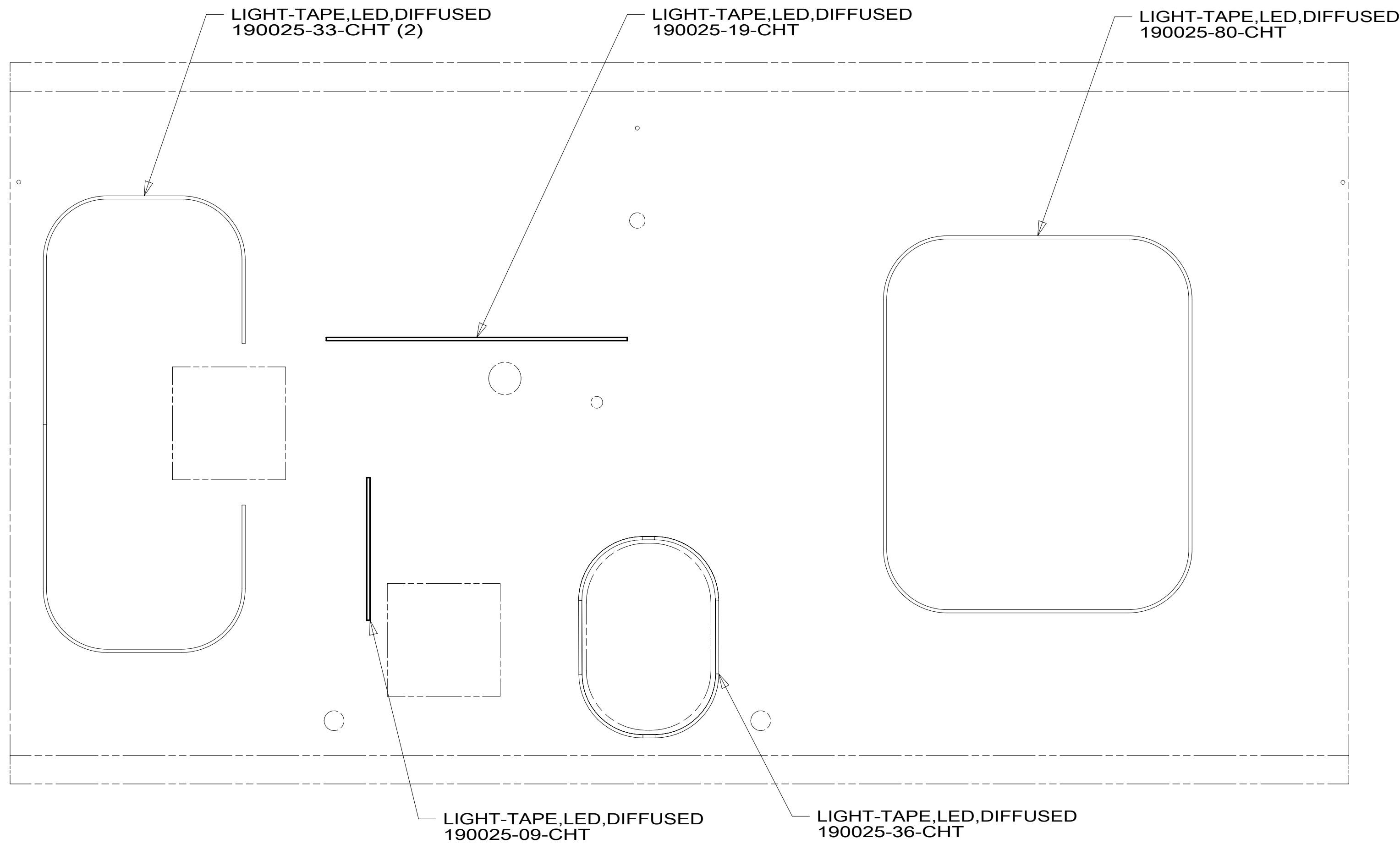
B

B

B

A

A

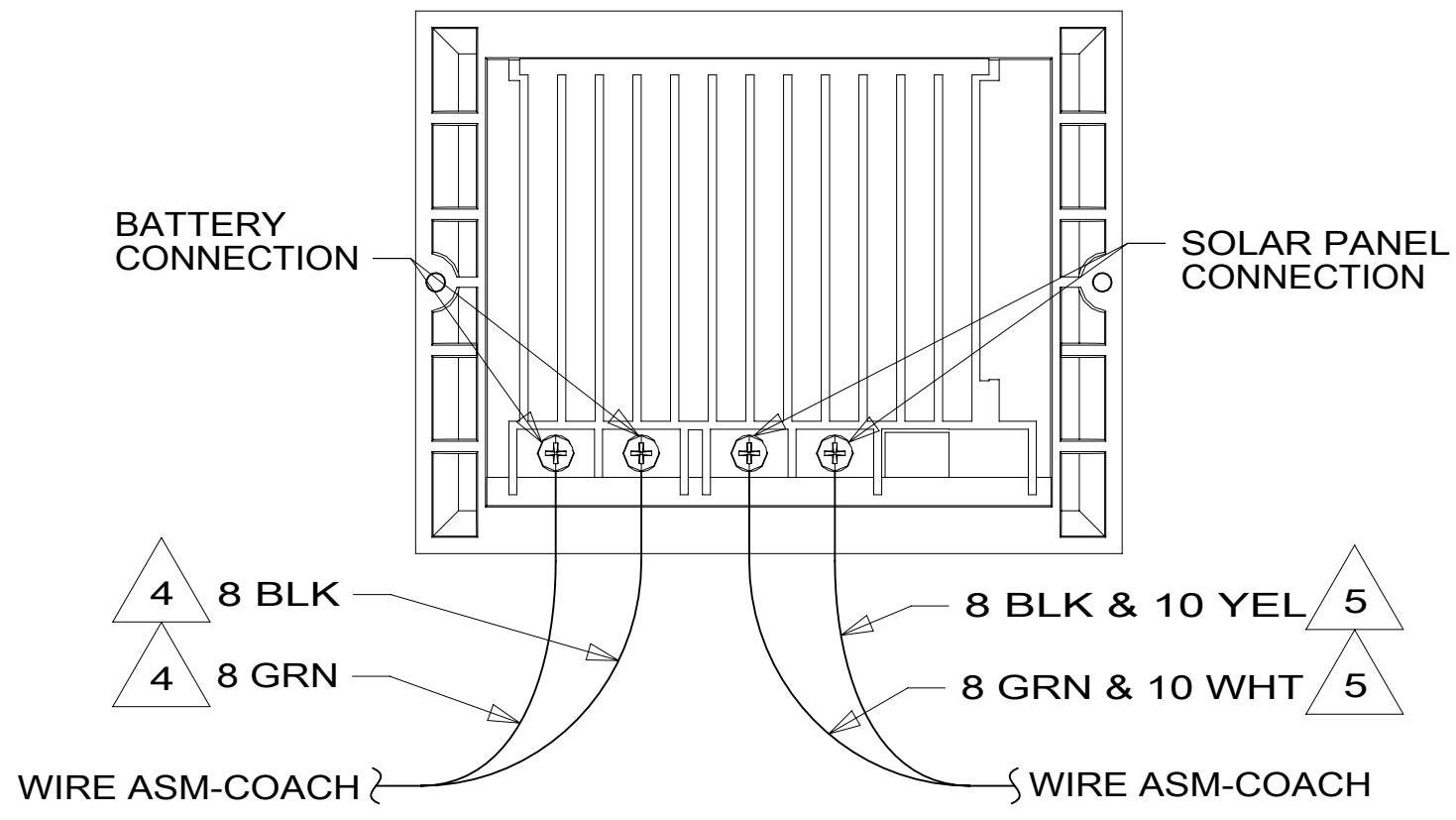


PANEL-SOLAR 100 WATT, FLEXIBLE  
000131101 / 325665-01-000 (2)  
WASHER  
077071-01-000 (8)  
SCREW  
000G39-10-16U (8)

CLAMP  
010495-01-000 (2)

PORT-SOLAR, 3 POSITION  
000170803 / 331218-01-CHT  
DETAIL ED

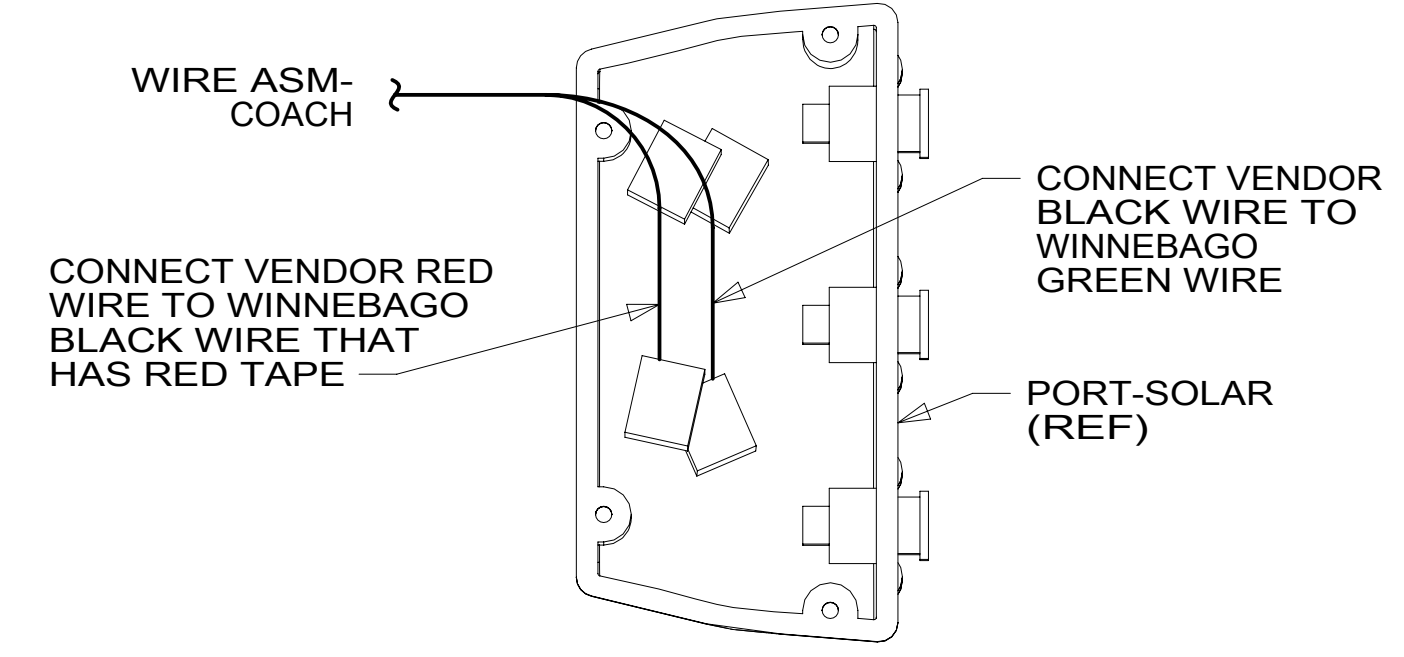
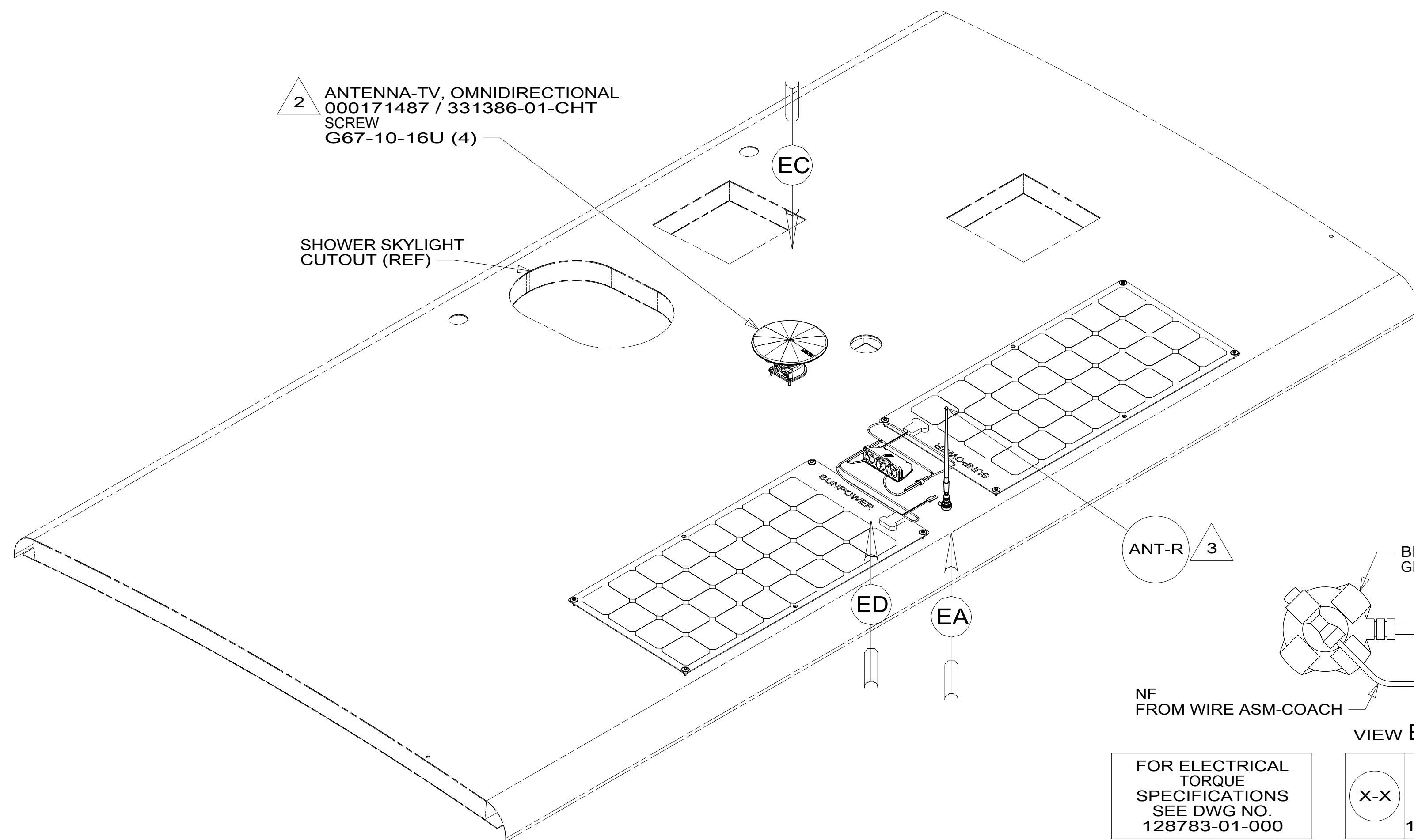
DETAIL EC



DETAIL EB

ANTENNA-TV, OMNIDIRECTIONAL  
000171487 / 331386-01-CHT  
SCREW  
G67-10-16U (4)

SHOWER SKYLIGHT  
CUTOUT (REF)



DETAIL ED

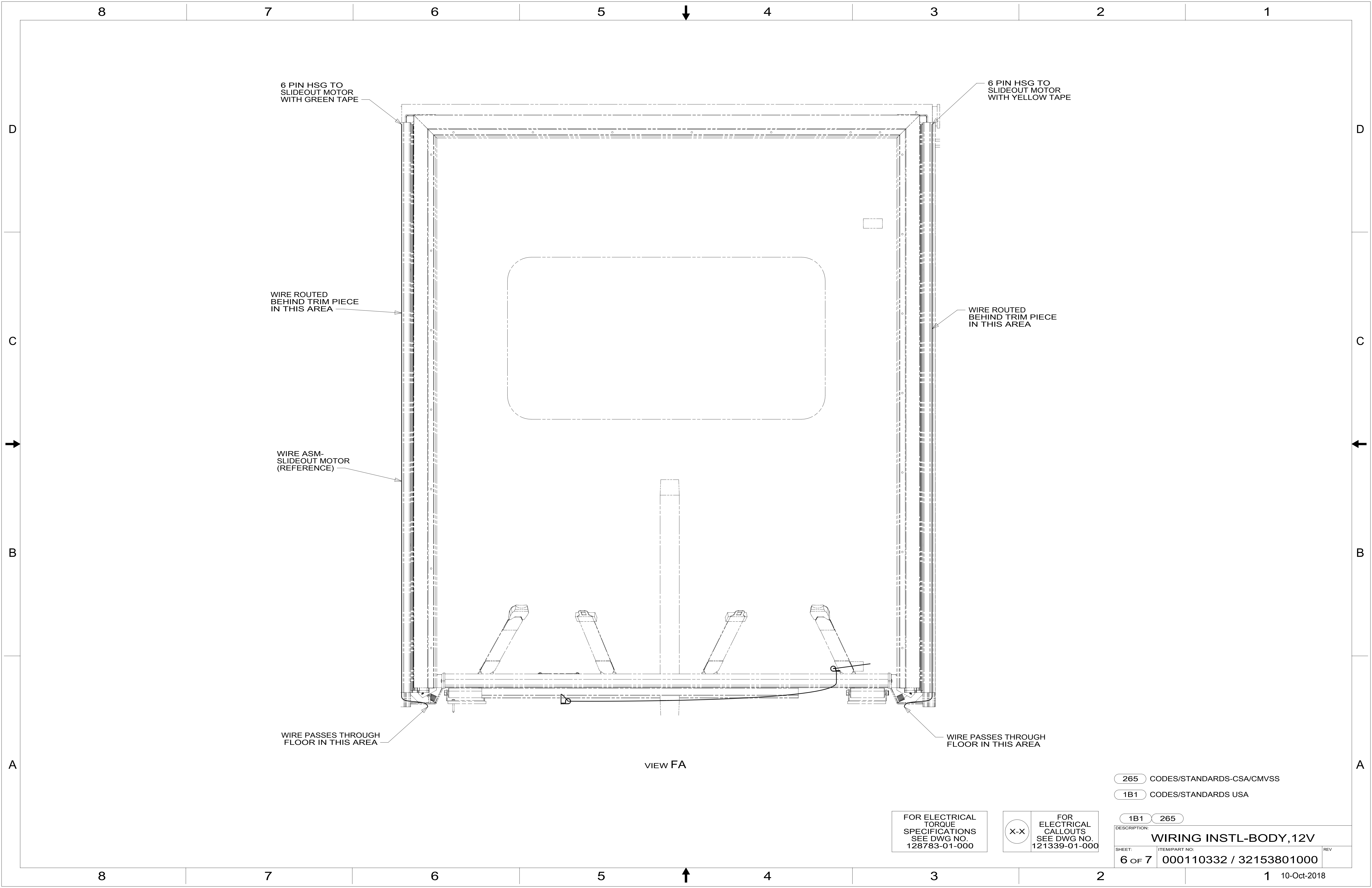
- NOTES:
- 6 COIL AND SECURE SOLAR PANEL WIRES ON EACH SIDE OF SOLAR PORT WITH CLAMPS CALLED OUT.
  - 5 WIRE IS MARKED WITH YELLOW TAPE.
  - 4 WIRE IS MARKED WITH GOLD TAPE.
  - 3 REMOVE GROUND WIRE FROM ANTENNA BASE.
  - 2 SEE ANTENNA INSTALLATION MANUAL FOR CORRECT INSTALLATION PROCEDURE.
  - 1 WRAP BRACKET LEGS AROUND ANTENNA BASE.

FOR ELECTRICAL TORQUE SPECIFICATIONS SEE DWG NO. 128783-01-000

FOR ELECTRICAL CALLOUTS SEE DWG NO. 121339-01-000

265 CODES/STANDARDS-CSA/CMVSS  
1B1 CODES/STANDARDS USA

DESCRIPTION:	
<b>WIRING INSTL-BODY, 12V</b>	
SHEET:	ITEM/PART NO. REV
5 OF 7	000110332 / 32153801000



6 PIN HSG TO  
SLIDEOUT MOTOR  
WITH GREEN TAPE

6 PIN HSG TO  
SLIDEOUT MOTOR  
WITH YELLOW TAPE

WIRE ROUTED  
BEHIND TRIM PIECE  
IN THIS AREA

WIRE ROUTED  
BEHIND TRIM PIECE  
IN THIS AREA

WIRE ASM-  
SLIDEOUT MOTOR  
(REFERENCE)

WIRE PASSES THROUGH  
FLOOR IN THIS AREA

WIRE PASSES THROUGH  
FLOOR IN THIS AREA

VIEW FA

265 CODES/STANDARDS-CSA/CMVSS

1B1 CODES/STANDARDS USA

1B1 265

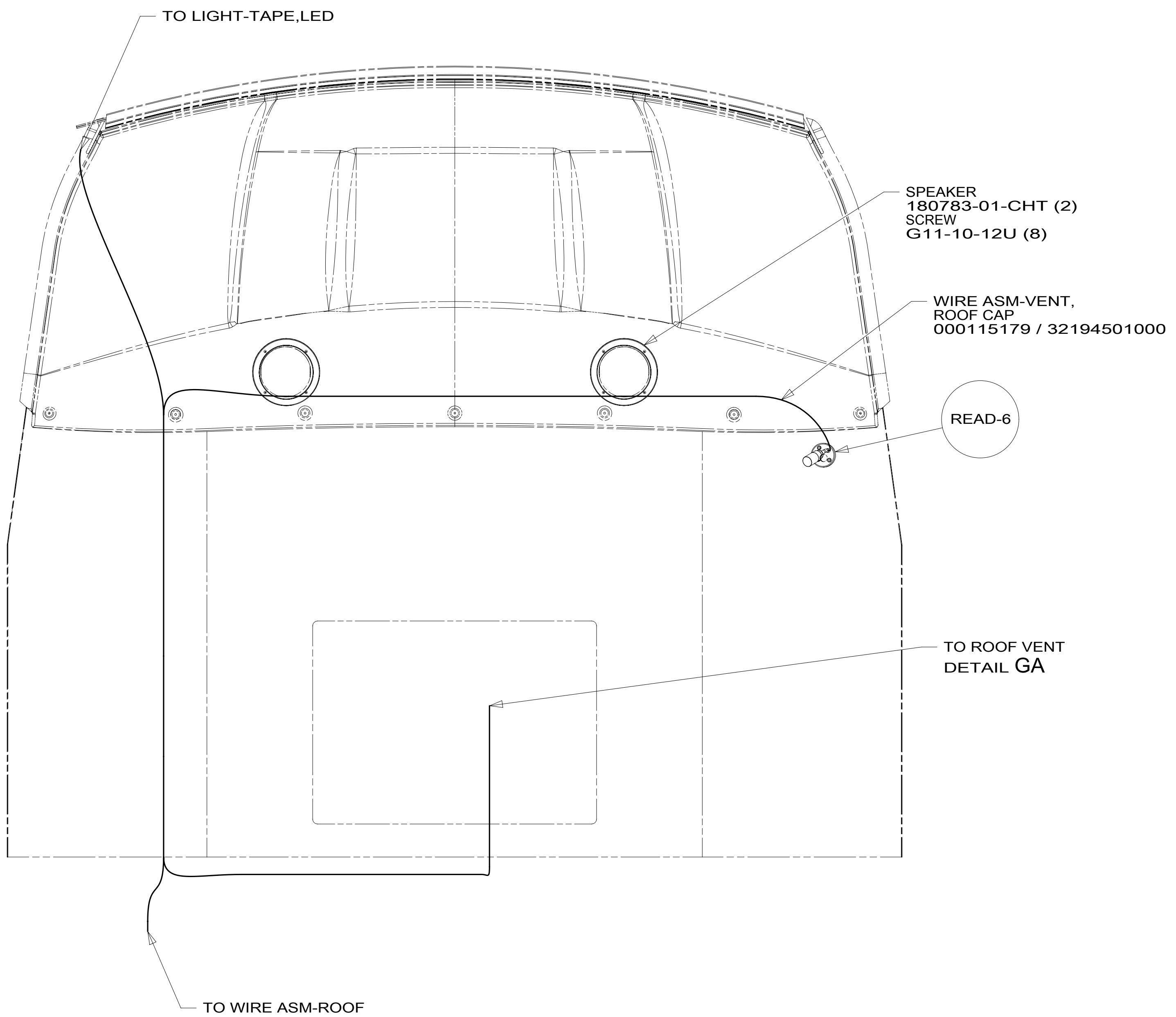
FOR ELECTRICAL  
TORQUE  
SPECIFICATIONS  
SEE DWG NO.  
128783-01-000

FOR  
ELECTRICAL  
CALLOUTS  
SEE DWG NO.  
121339-01-000

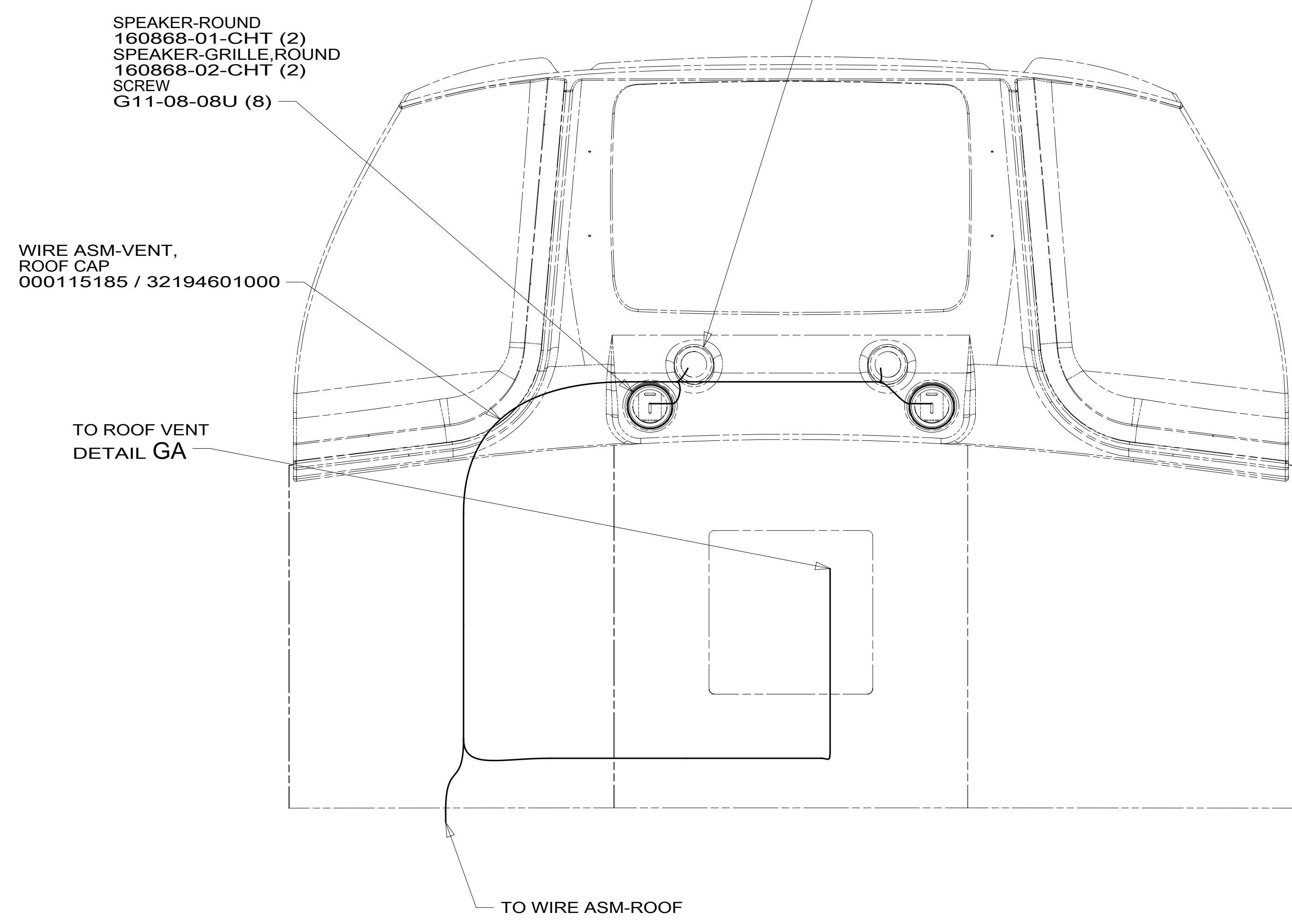
DESCRIPTION:  
**WIRING INSTL-BODY, 12V**

SHEET: 6 OF 7 ITEM/PART NO: 000110332 / 32153801000 REV

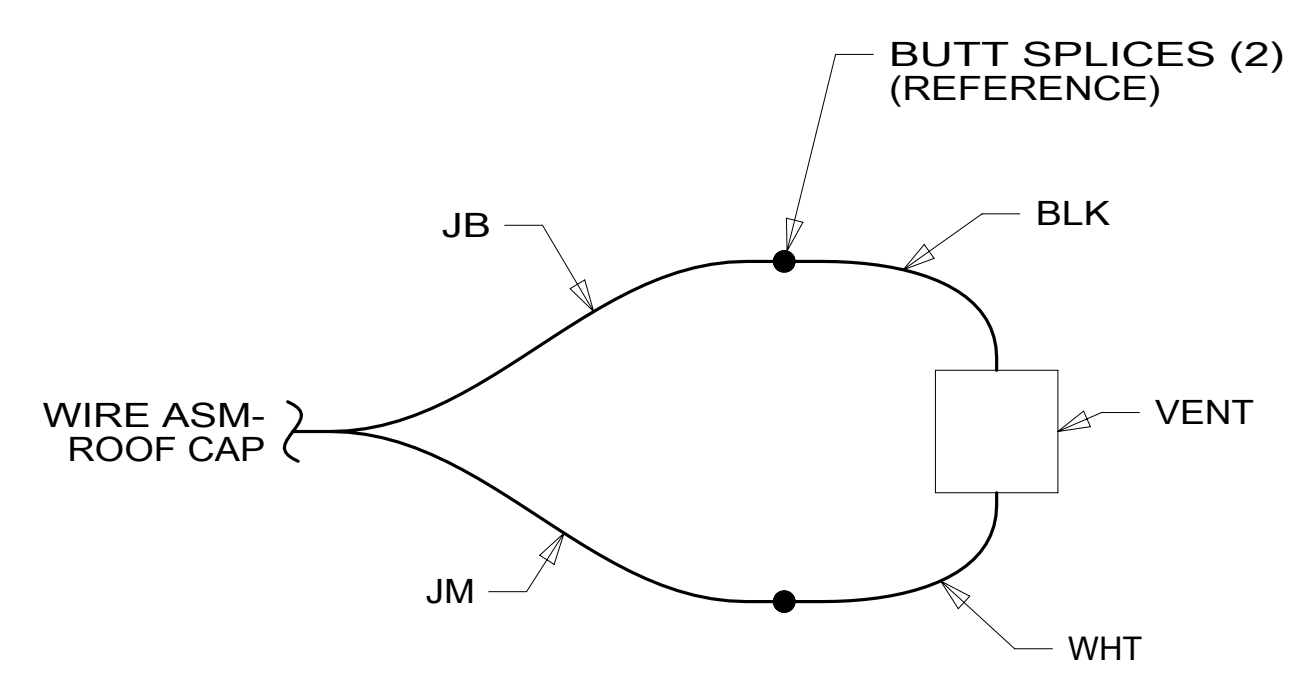
1 10-Oct-2018



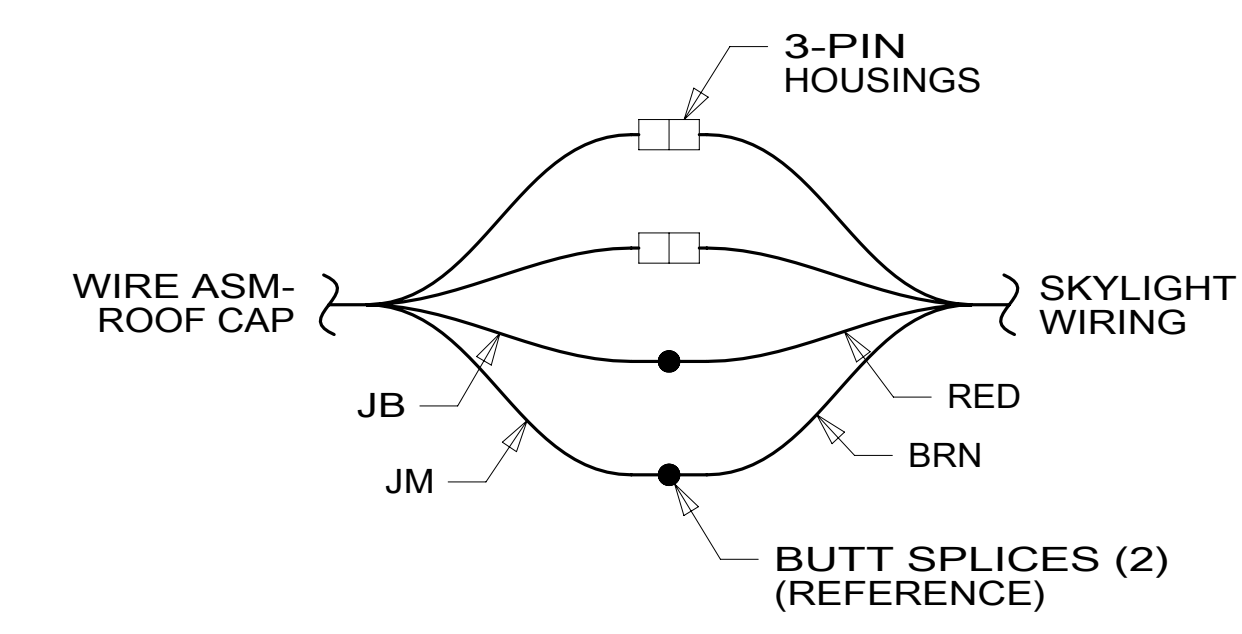
31T



31P



DETAIL GA 41M



DETAIL GA 316

FOR ELECTRICAL TORQUE SPECIFICATIONS SEE DWG NO. 128783-01-000

FOR ELECTRICAL CALLOUTS SEE DWG NO. 121339-01-000

- 41M VENT-POWER VENTILATOR
- 316 SKYLIGHT/ROOF VENT, POWER
- 31T FRONT CAP W/BED
- 31P FRONT CAP W/O BED
- 265 CODES/STANDARDS-CSA/CMVSS
- 1B1 CODES/STANDARDS USA

1B1 265		DESCRIPTION:	
<b>WIRING INSTL-BODY,12V</b>			
SHEET:	ITEM/PART NO.:	REV	
7 OF 7	000110332 / 32153801000		