

8 7 6 5 4 3 2 1

D

D

C

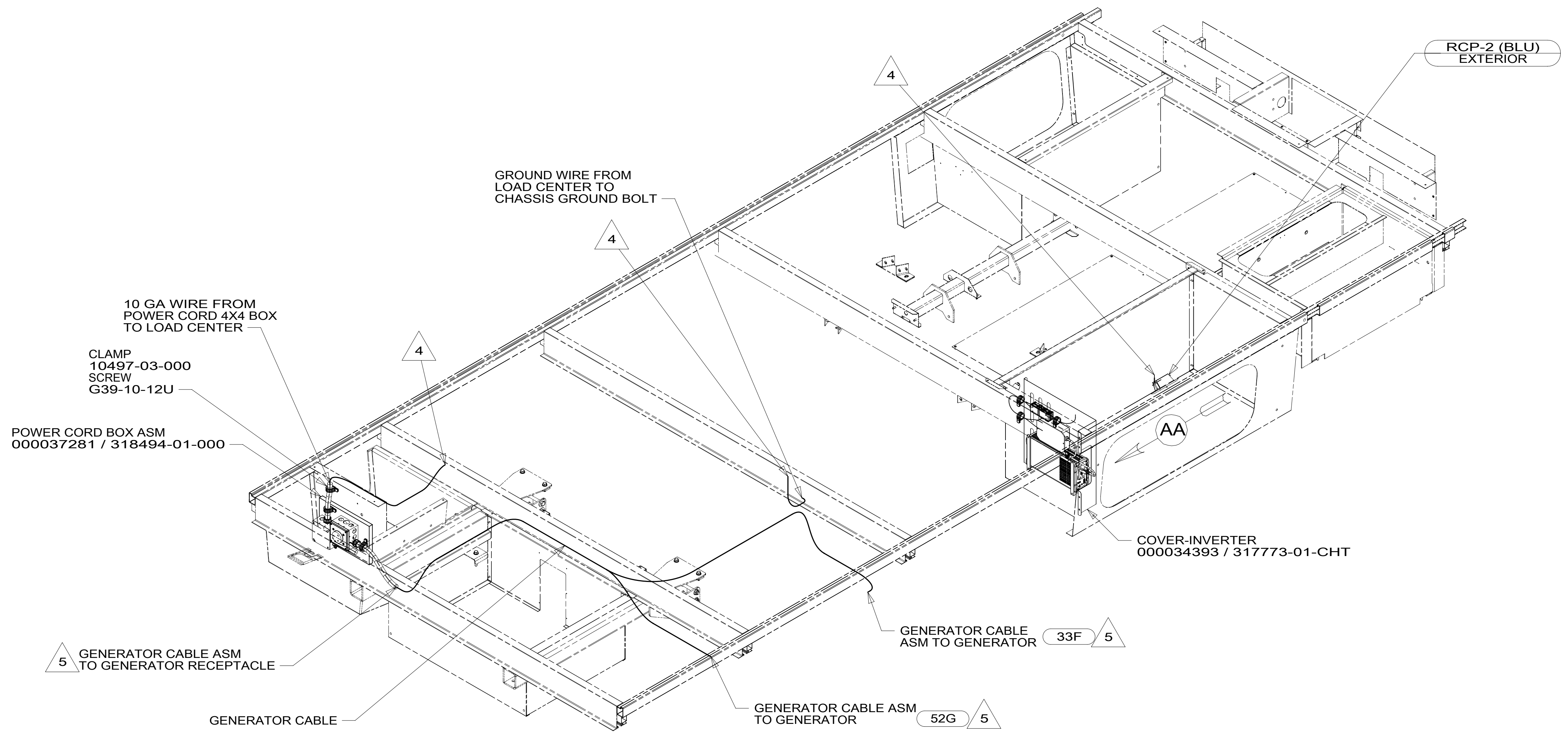
C

B

B

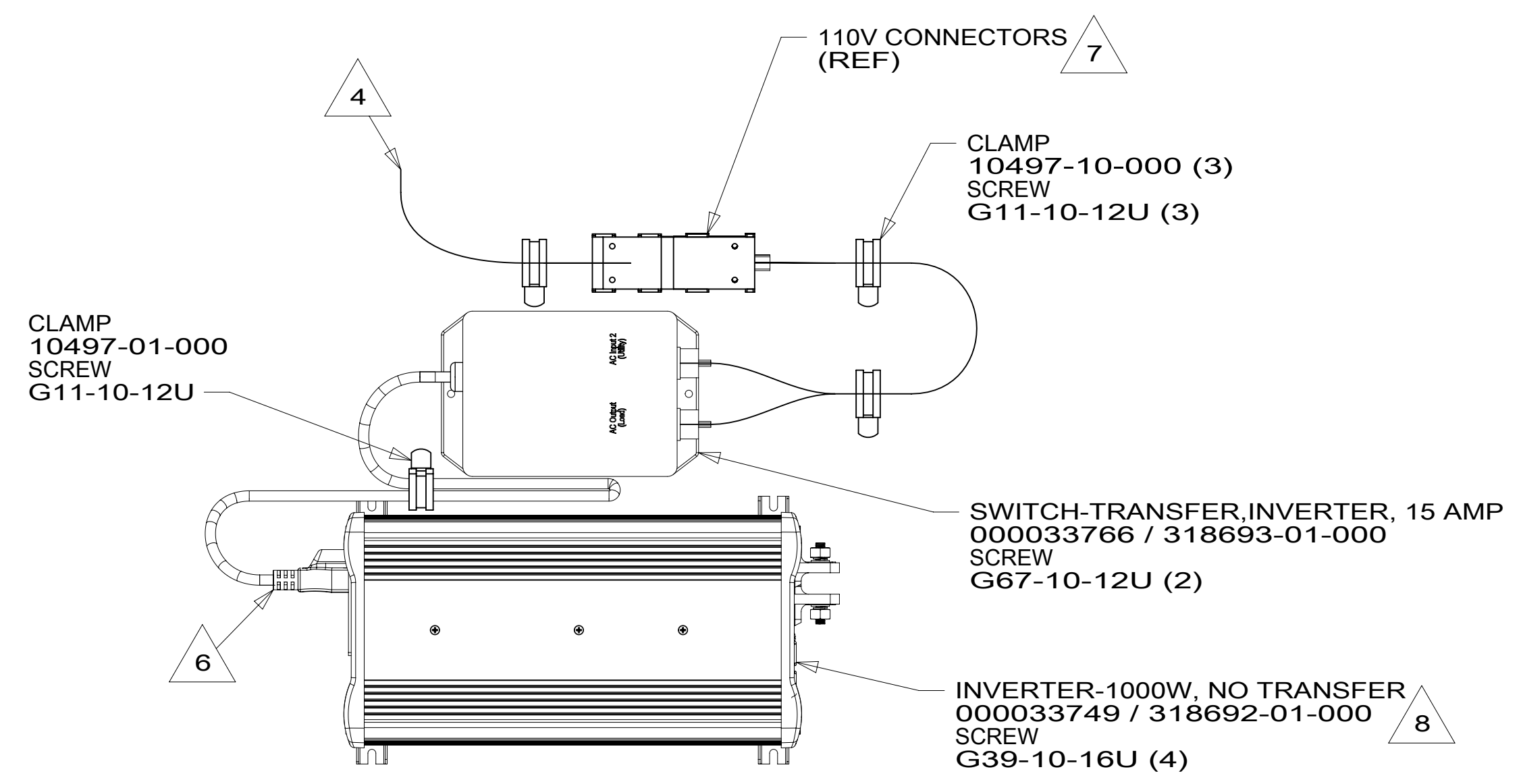
A

A



- 8 CONNECT ORG CABLE TO RED(+) TERMINAL, BLK CABLE TO WHITE(-) TERMINAL, GROUND TO GROUND LUG.
 - 7 CONNECT INVERTER INPUT TO BRN WIRE AND INVERTER OUTPUT TO BRN-2 WIRE.
 - 6 PLUG TRANSFER SWITCH INTO 110V OUTLET IN INVERTER FRONT.
 - 5 SEE GENERATOR INSTL FOR ADDITIONAL INFORMATION.
 - 4 WIRES ROUTED THROUGH FLOOR IN THIS AREA.
3. ALL GROUND WIRES TO BE COVERED WITH TUBING 8041-02-000.
2. ALL 110V WIRE ARE TO BE CLAMPED WITH CLAMP 10497-05-000 WITHIN 200MM OF OUTLET BOXES, USE SCREW G67-10-12U.
1. AT MINIMUM ALL WIRES TO BE SUPPORTED AND SECURED PER CODE REQUIREMENTS. USE CLAMP 10495 OR 10497 OR WIRE TIE 8343 OR 108046 AND SCREW G67-XX-XXX OR G56-XX-XXX AS APPROPRIATE FOR INSTALLATION.

NOTES:



VIEW AA

FOR ELECTRICAL TORQUE SPECIFICATIONS SEE DWG NO. 128783-01-000

FOR ELECTRICAL CALLOUTS SEE DWG NO. 121339-01-000

- 52G GEN-3.6KW ONAN LP MICROQUIET
- 33F GEN-3.2 KW ONAN DIESEL
- 265 CODES/STANDARDS-CSA-CMVSS
- 1B1 CODES/STANDARDS USA

1B1 265

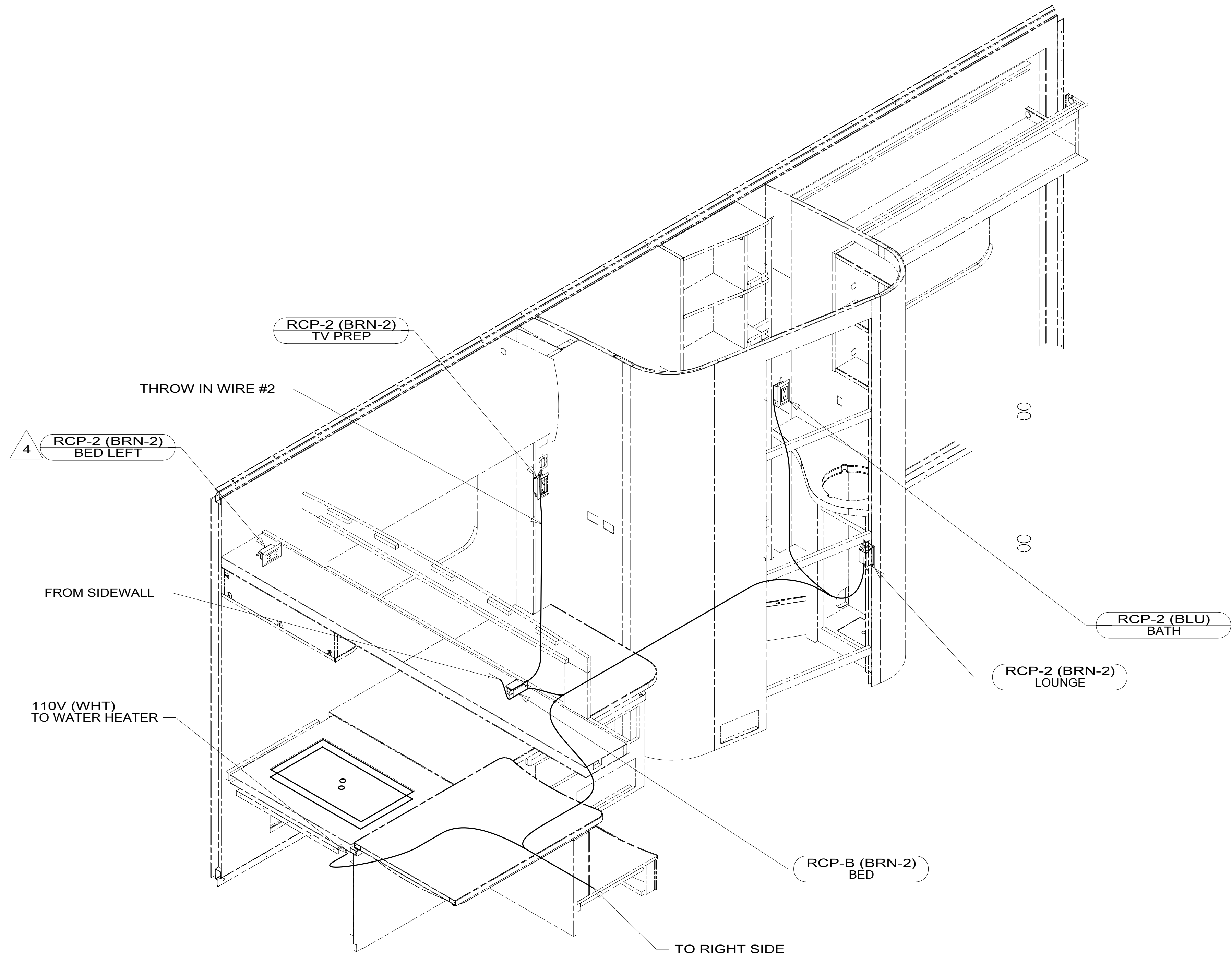
COPYRIGHT 2016 WINNEBAGO INDUSTRIES, INC.

| | | | |
|--|---------------------------------------|-----------------------------------|---------|
| DSNR: | | ALL DIMENSIONS ARE IN MILLIMETERS | |
| DFFR: | | | |
| UNSPECIFIED TOLERANCES: | | MATERIAL: | |
| WHOLE DIM (X) | ± 3 | | |
| ONE-PLACE (X.X) | ± 1.5 | | |
| TWO-PLACE (X.XX) | ± 0.50 | | |
| ANGLE | ± 1° | | |
| REFER TO ES0018 FOR FASTENER TIGHTENING GUIDELINES | WEIGHT: (LBS) | FIRST USED: | 18 524V |
| DESCRIPTION: WIRING INSTL-BODY, 110V | | | |
| SHEET: 1 OF 6 | ITEM/PART NO: 000110331 / 32153701000 | REV: | |

8 7 6 5 4 3 2 1

8 7 6 5 4 3 2 1

D
C
B
A



- 4 WIRE ROUTED IN SIDEWALL.
- ALL GROUND WIRES TO BE COVERED WITH TUBING 8041-02-000.
 - ALL WIRING TO BE SECURED WITHIN 200MM OF OUTLET BOXES.
 - AT MINIMUM ALL WIRES TO BE SUPPORTED AND SECURED PER CODE REQUIREMENTS. USE CLAMP 10495 OR 10497 OR WIRE TIE 8343 OR 108046 AND SCREW G67-XX-XXX OR G56-XX-XXX AS APPROPRIATE FOR INSTALLATION.

NOTES:

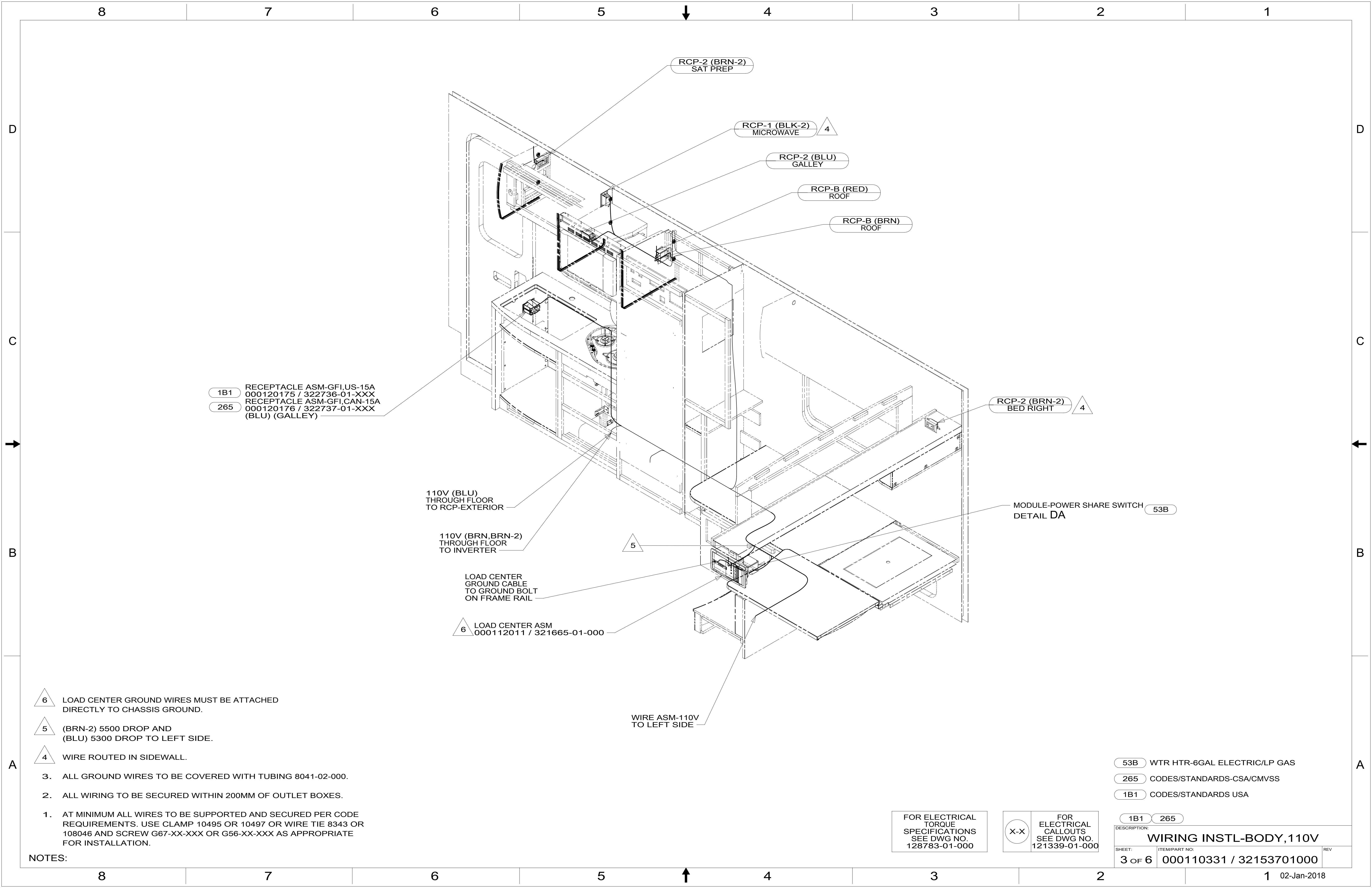
FOR ELECTRICAL TORQUE SPECIFICATIONS SEE DWG NO. 128783-01-000

FOR ELECTRICAL CALLOUTS SEE DWG NO. 121339-01-000

265 CODES/STANDARDS-CSA/CMVSS
1B1 CODES/STANDARDS USA

| | |
|--|--|
| 1B1 265 | |
| DESCRIPTION: WIRING INSTL-BODY, 110V | |
| SHEET: 2 OF 6 | ITEM/PART NO: 000110331 / 32153701000 |
| REV | |

8 7 6 5 4 3 2 1 02-Jan-2018



1B1 RECEPTACLE ASM-GFI,US-15A
000120175 / 322736-01-XXX
265 RECEPTACLE ASM-GFI,CAN-15A
000120176 / 322737-01-XXX
(BLU) (GALLEY)

110V (BLU)
THROUGH FLOOR
TO RCP-EXTERIOR

110V (BRN, BRN-2)
THROUGH FLOOR
TO INVERTER

LOAD CENTER
GROUND CABLE
TO GROUND BOLT
ON FRAME RAIL

6 LOAD CENTER ASM
000112011 / 321665-01-000

WIRE ASM-110V
TO LEFT SIDE

MODULE-POWER SHARE SWITCH
DETAIL DA (53B)

6 LOAD CENTER GROUND WIRES MUST BE ATTACHED DIRECTLY TO CHASSIS GROUND.

5 (BRN-2) 5500 DROP AND (BLU) 5300 DROP TO LEFT SIDE.

4 WIRE ROUTED IN SIDEWALL.

3. ALL GROUND WIRES TO BE COVERED WITH TUBING 8041-02-000.

2. ALL WIRING TO BE SECURED WITHIN 200MM OF OUTLET BOXES.

1. AT MINIMUM ALL WIRES TO BE SUPPORTED AND SECURED PER CODE REQUIREMENTS. USE CLAMP 10495 OR 10497 OR WIRE TIE 8343 OR 108046 AND SCREW G67-XX-XXX OR G56-XX-XXX AS APPROPRIATE FOR INSTALLATION.

NOTES:

53B WTR HTR-6GAL ELECTRIC/LP GAS

265 CODES/STANDARDS-CSA/CMVSS

1B1 CODES/STANDARDS USA

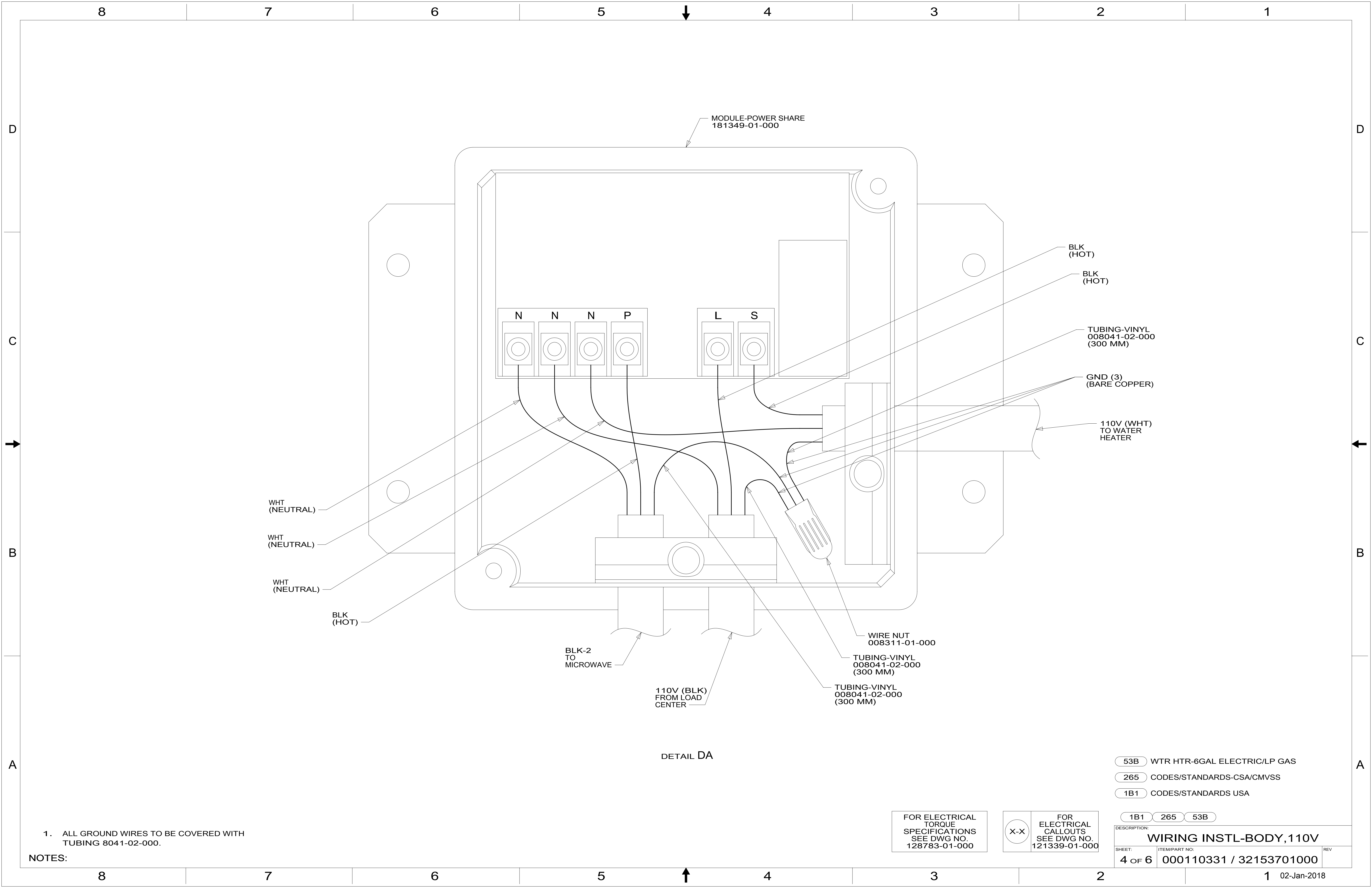
1B1 265

FOR ELECTRICAL TORQUE SPECIFICATIONS SEE DWG NO. 128783-01-000

FOR ELECTRICAL CALLOUTS SEE DWG NO. 121339-01-000

DESCRIPTION: WIRING INSTL-BODY, 110V

SHEET: 3 OF 6 ITEM/PART NO: 000110331 / 32153701000 REV



DETAIL DA

1. ALL GROUND WIRES TO BE COVERED WITH TUBING 8041-02-000.

NOTES:

FOR ELECTRICAL TORQUE SPECIFICATIONS SEE DWG NO. 128783-01-000

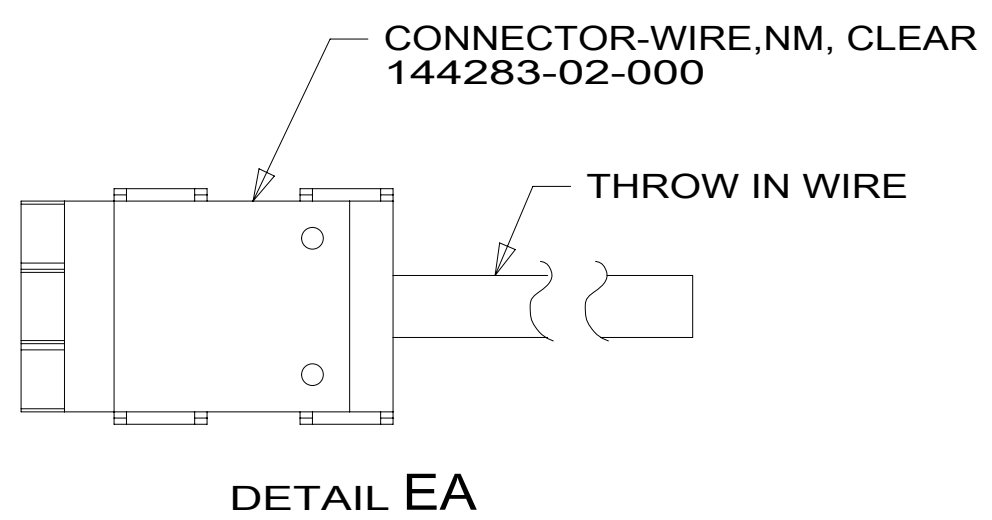
FOR ELECTRICAL CALLOUTS SEE DWG NO. 121339-01-000

- 53B WTR HTR-6GAL ELECTRIC/LP GAS
- 265 CODES/STANDARDS-CSA/CMVSS
- 1B1 CODES/STANDARDS USA

1B1 265 53B

| | | |
|--------------------------------|-------------------------|-----|
| DESCRIPTION: | | |
| WIRING INSTL-BODY, 110V | | |
| SHEET: | ITEM/PART NO.: | REV |
| 4 OF 6 | 000110331 / 32153701000 | |

| | | | |
|---------------------|-----|---------------|-----|
| RED | 1B1 | 136135-07-045 | |
| | 265 | 136136-07-045 | |
| BLK | 1B1 | 136135-06-012 | 53B |
| | 265 | 136136-06-012 | 53B |
| BLK | 1B1 | 136135-06-060 | 1BU |
| | 265 | 136136-06-060 | 1BU |
| BLK-2 | 1B1 | 136135-22-052 | 53B |
| | 265 | 136136-22-052 | 53B |
| BRN | 1B1 | 136131-03-030 | 2 |
| | 265 | 136134-03-030 | 2 |
| BRN-2 | 1B1 | 136131-19-160 | 2 |
| | 265 | 136134-19-160 | 2 |
| BLU | 1B1 | 136131-02-225 | |
| | 265 | 136134-02-225 | |
| WHT | 1B1 | 136135-09-028 | 53B |
| | 265 | 136136-09-028 | 53B |
| MAIN | 1B1 | 136137-01-042 | |
| | 265 | 136138-01-042 | |
| THROW IN WIRE #2 | 1B1 | 136131-19-017 | |
| | 265 | 136134-19-017 | |
| GENERATOR CABLE ASM | 1B1 | 164957-02-042 | 33F |
| | 265 | 164957-04-042 | 33F |
| GROUND | | 136145-02-015 | |



- 2 FOR CONNECTOR INSTALLATION SEE DETAIL EA.
1. ALL GROUND WIRES TO BE COVERED WITH TUBING 8041-02-000.

NOTES:

FOR ELECTRICAL TORQUE SPECIFICATIONS SEE DWG NO. 128783-01-000

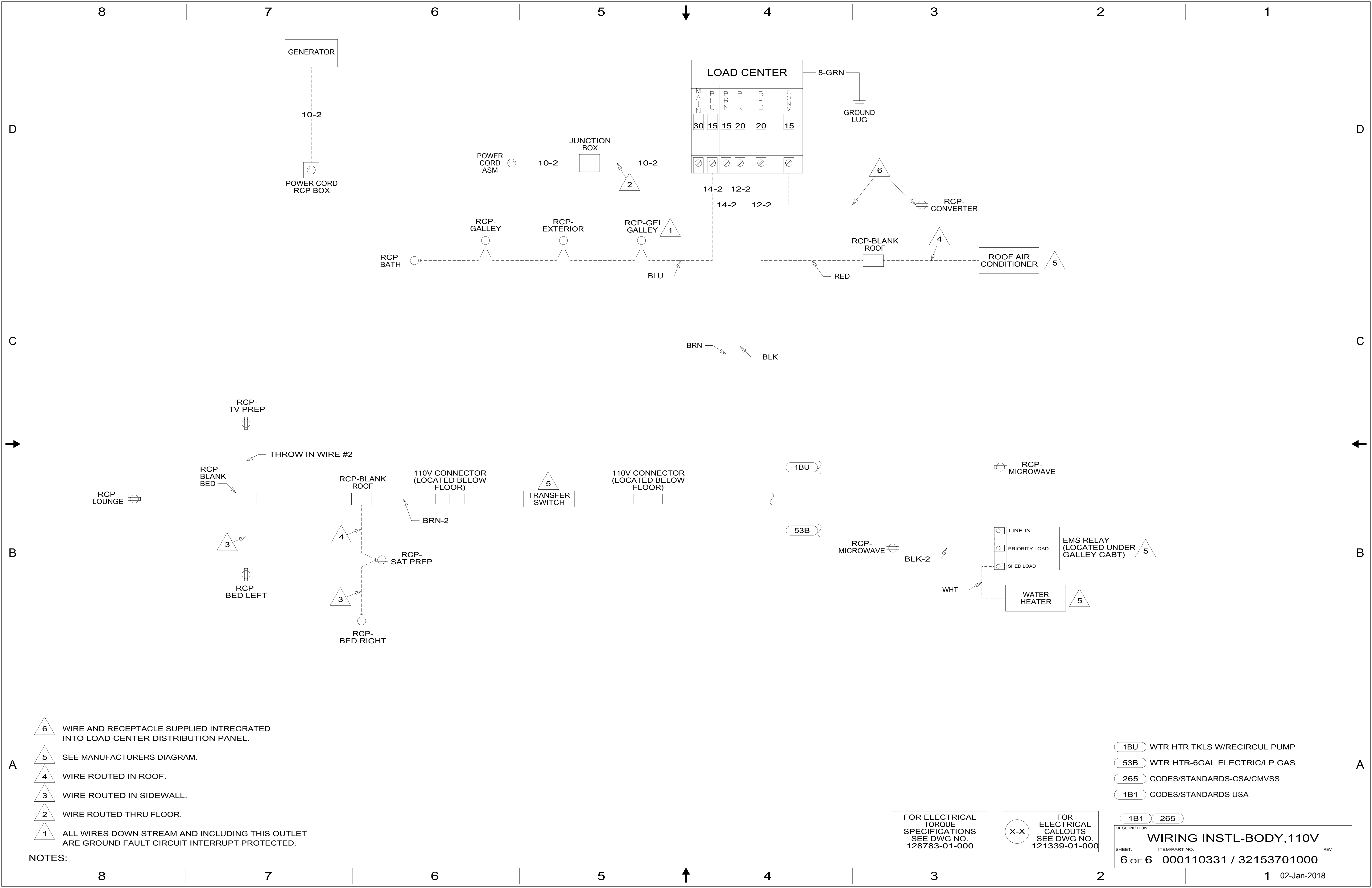
FOR ELECTRICAL CALLOUTS SEE DWG NO. 121339-01-000

- 1BU WTR HTR TKLS W/RECIRCUL PUMP
- 53B WTR HTR-6GAL ELECTRIC/LP GAS
- 33F GEN-3.5 KW ONAN DIESEL
- 265 CODES/STANDARDS-CSA/CMVSS
- 1B1 CODES/STANDARDS USA

1B1 265

DESCRIPTION:
WIRING INSTL-BODY, 110V

SHEET: 5 OF 6 ITEM/PART NO: 000110331 / 32153701000 REV



- NOTES:
- 6 WIRE AND RECEPTACLE SUPPLIED INTREGATED INTO LOAD CENTER DISTRIBUTION PANEL.
 - 5 SEE MANUFACTURERS DIAGRAM.
 - 4 WIRE ROUTED IN ROOF.
 - 3 WIRE ROUTED IN SIDEWALL.
 - 2 WIRE ROUTED THRU FLOOR.
 - 1 ALL WIRES DOWN STREAM AND INCLUDING THIS OUTLET ARE GROUND FAULT CIRCUIT INTERRUPT PROTECTED.

FOR ELECTRICAL TORQUE SPECIFICATIONS SEE DWG NO. 128783-01-000

FOR ELECTRICAL CALLOUTS SEE DWG NO. 121339-01-000

- 1BU WTR HTR TKLS W/RECIRCUL PUMP
- 53B WTR HTR-6GAL ELECTRIC/LP GAS
- 265 CODES/STANDARDS-CSA/CMVSS
- 1B1 CODES/STANDARDS USA

| | | | |
|--------------|-------------------------|--------------------------------|--|
| DESCRIPTION: | | WIRING INSTL-BODY, 110V | |
| SHEET: | ITEM/PART NO.: | REV: | |
| 6 OF 6 | 000110331 / 32153701000 | | |