

8

7

6

5



4

3

2

1

D

D

C

C



B

B

A

A

8

7

6

5



4

3

2

1

CABLE ASM-STARTER (RED)	141415-32-058	
CABLE ASM-COACH BATTERY (YEL)	141415-52-014	
CABLE ASM-COACH BATTERY GND (BLK)	133566-12-008	
CABLE ASM-GENERATOR (GRN)	141415-42-033	
CABLE ASM-GENERATOR GND (BLK)	133566-12-008	
CABLE ASM-STARTER,EXT (RED 2)	141415-32-007	
LEVELING SYSTEM GROUND CABLE (BLK)	133566-12-005	60M
LEVELING SYSTEM POWER CABLE (BLU)	141415-22-022	60M
CABLE ASM-INVERTER FUSE (ORG)	141415-62-008	401
CABLE ASM-INVERTER (ORG)	141415-61-019	401
CABLE ASM-INVERTER GND (BLK)	133566-12-020	401
CABLE ASM-INVERTER CASE GND (BLK)	136145-05-012	401

60M

60M

401

401

401

401

60M HYDRAULIC LEVEL JACKS-AUTO

401 INVERTER-DC/AC, 1000 WATT

265 CODES/STANDARDS-CSA/CMVSS

1B1 CODES/STANDARDS USA

1B1 265



COPYRIGHT 2016 WINNEBAGO INDUSTRIES, INC.

DSNR:		ALL DIMENSIONS ARE IN MILLIMETERS		
DFFR:		MATERIAL:		
UNSPECIFIED TOLERANCES:				
WHOLE DIM (X)	: 3			
ONE-PLACE (X.X)	: 1.5			
TWO-PLACE (X.XX)	: 0.50			
ANGLE	: 1°			

REFER TO ES0018 FOR FASTENER TIGHTENING GUIDELINES

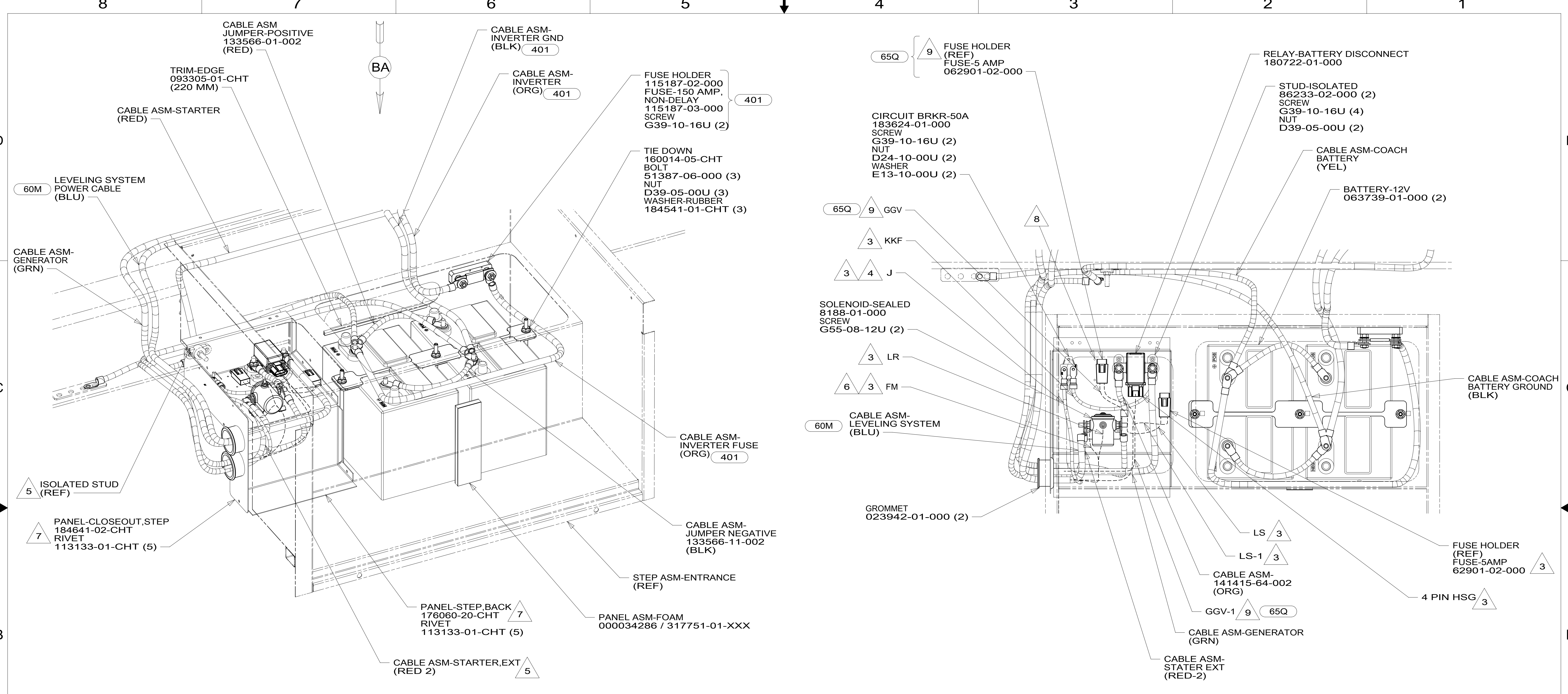
WEIGHT: (LBS) FIRST USED: 18 331G

BATTERY INSTL

SHEET:	ITEM/PART NO.:	REV:
1 OF 2	000092746 / 32138501000	

FOR ELECTRICAL TORQUE SPECIFICATIONS SEE DWG NO. 128783-01-000

FOR ELECTRICAL CALLOUTS SEE DWG NO. 121339-01-000



VIEW BA

- 9 FUSE HOLDER AND WIRING ARE PART OF WIRE ASM-GPS TRANSMITTER POWER.
 - 8 PLUG BREAKER MOUNTING HOLES WITH SCREW G39-10-12U (2).
 - 7 MOUNT ELECTRICAL COMPONENTS TO PANELS AND CONNECT CABLES TO THE COMPONENTS. PANELS WILL BE MOUNTED TO STEP BOX IN MOTORHOME PLANT AFTER FLOOR IS SET.
 - 6 SECURE WITH SOLENOID MOUNTING SCREWS.
 - 5 CABLE ASM-STARTER, EXT (RED 2) WILL BE CONNECTED TO ISOLATED STUD ON CHASSIS IN MOTORHOME PLANT AFTER ALL CONNECTIONS IN BATTERY BOX ARE COMPLETED AND STEP ASM IS INSTALLED AFTER FLOOR IS SET.
 - 4 WIRE MARKED WITH ORANGE TAPE.
 - 3 WIRES ARE PART OF WIRE ASM-CHASSIS.
2. BATTERY CABLES ARE NOT TO BE ROUTED OVER BATTERY FILL CAPS.
1. SEE WIRING INSTL-CHASSIS FOR ADDITIONAL INFORMATION.

NOTES:

- 65Q RENTAL - APOLLO
- 60M HYDRAULIC LEVEL JACKS-AUTO
- 401 INVERTER-DC/AC, 1000 WATT
- 265 CODES/STANDARDS-CSA/CMVSS
- 1B1 CODES/STANDARDS USA

FOR ELECTRICAL TORQUE SPECIFICATIONS SEE DWG NO. 128783-01-000

FOR ELECTRICAL CALLOUTS SEE DWG NO. 121339-01-000

DESCRIPTION:		1B1 265	
BATTERY INSTL			
SHEET:	ITEM/PART NO.:	REV:	
2 OF 2	000092746 / 32138501000		