

- 5 SEE GENERATOR INSTL FOR ADDITIONAL INFORMATION.
- 4 CORD IS PART OF WIRE ASM-CHASSIS.
- 3 ROUTE WIRE THRU FLOOR.
- 2. ALL 110V WIRE TO BE CLAMPED WITH CLAMP 10497-05-000 WITHIN 200MM OF OUTLET BOXES, USE SCREW G67-10-12U.
- 1. AT MINIMUM ALL WIRES TO BE SUPPORTED AND SECURED PER CODE REQUIREMENTS. USE CLAMP 10495 OR 10497 OR WIRE TIE 8343 OR 108046 AND SCREW G67-XX-XXX OR G56-XX-XXX AS APPROPRIATE FOR INSTALLATION.

NOTES:

- 401 INVERTER-DC/AC, 1000 WATT
- 09A PREMIUM PACKAGE
- 093 PREMIUM PACKAGE WITHOUT
- 12D ELECTRICAL SYSTEM 30 AMP
- 265 CODES/STANDARDS-CSA/CMVSS
- 1B1 CODES/STANDARDS USA

1B1 265

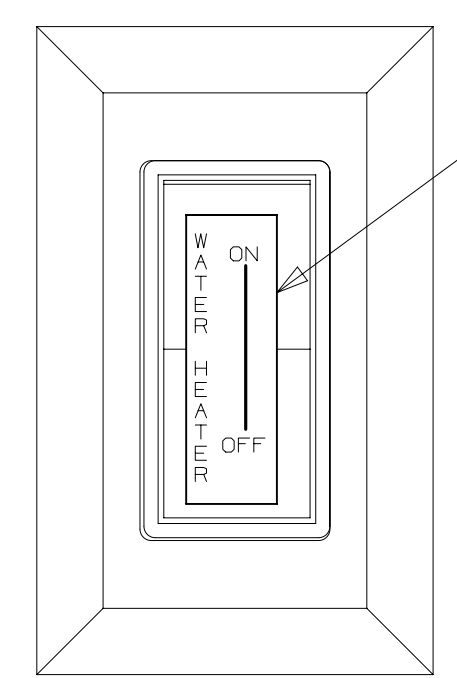


| | | | |
|--|--------|-----------------------------------|-------------|
| DSNR: | | ALL DIMENSIONS ARE IN MILLIMETERS | |
| DFFR: | | MATERIAL: | |
| UNSPECIFIED TOLERANCES: | | | |
| WHOLE DIM (X) | : 3 | | |
| ONE-PLACE (X.X) | : 1.5 | | |
| TWO-PLACE (X.XX) | : 0.50 | | |
| ANGLE | : 1° | | |
| REFER TO ES0018 FOR FASTENER TIGHTENING GUIDELINES | | WEIGHT: (LBS) | FIRST USED: |
| | | | 18 331G |

FOR ELECTRICAL TORQUE SPECIFICATIONS SEE DWG NO. 128783-01-000

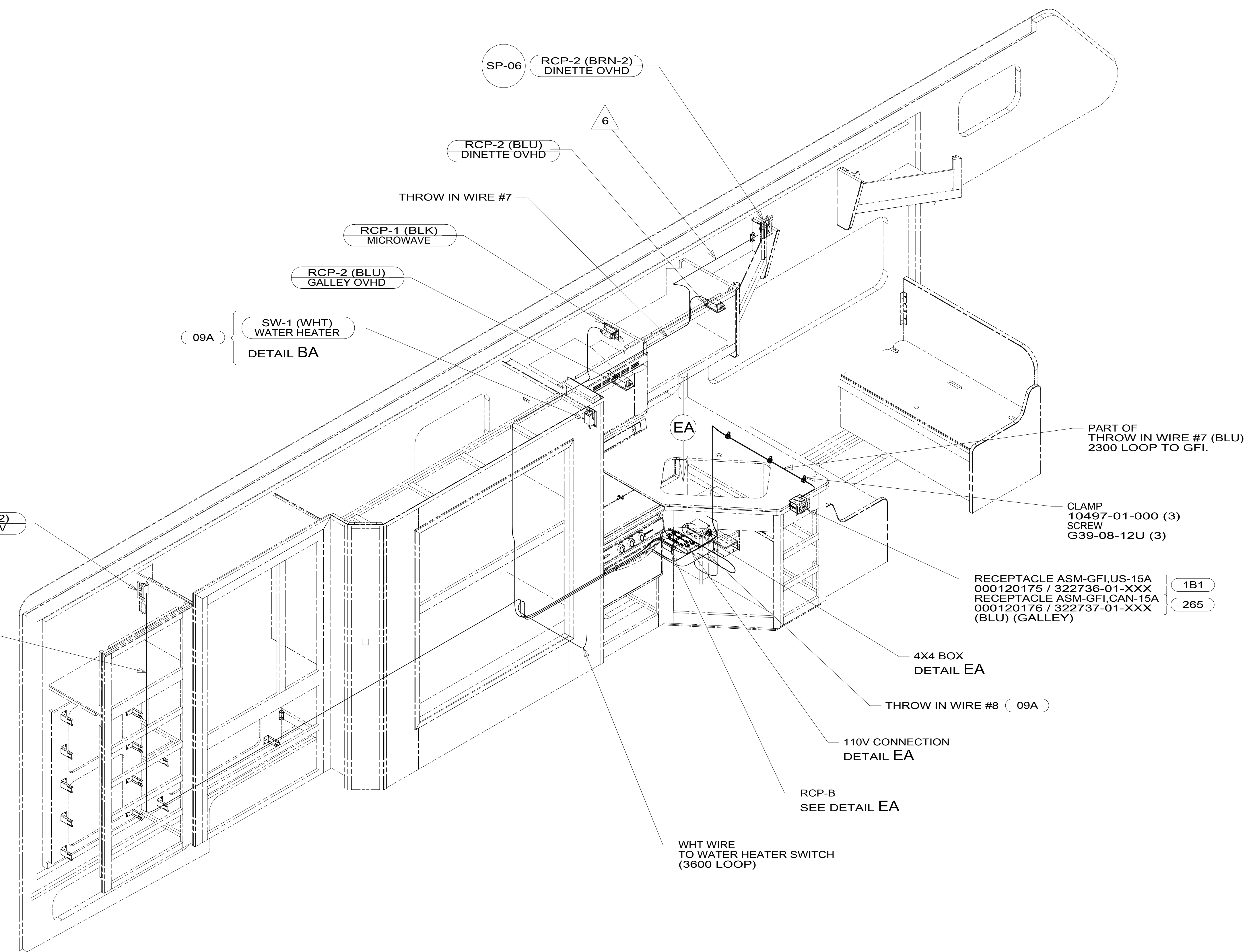
FOR ELECTRICAL CALLOUTS SEE DWG NO. 121339-01-000

DESCRIPTION:
WIRING INSTL-BODY, 110V



LABEL-ON/OFF, WATER HEATER
083588-01-000

DETAIL BA 09A



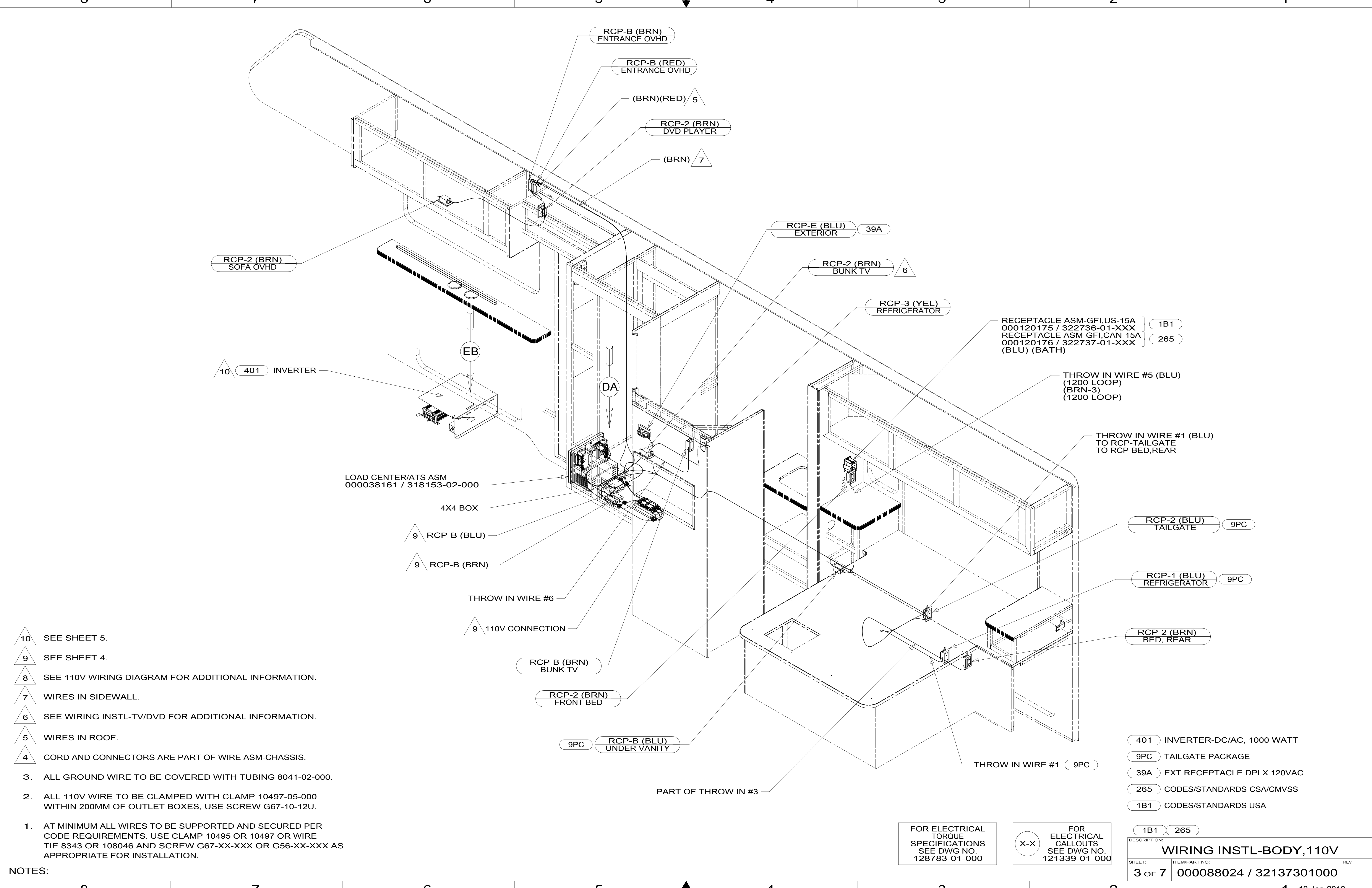
- NOTES:
- 7 BRN WIRE TO BE PUSHED THROUGH ROUTED PATH IN SIDEWALL.
 - 6 APPLY LABEL DIRECTLY TO FACE OF THE SWITCH.
 - 5 CORD & CONNECTORS ARE PART OF WIRE ASM-CHASSIS.
 4. FOR MORE INFORMATION SEE WIRING DIAGRAM-BODY, 110V.
 3. ALL GROUND WIRE TO BE COVERED WITH TUBING 8041-02-000.
 2. ALL 110V WIRE TO BE CLAMPED WITH CLAMP 10497-05-000 WITHIN 200MM OF OUTLET BOXES, USE SCREW G67-10-12U.
 1. AT MINIMUM ALL WIRES TO BE SUPPORTED AND SECURED PER CODE REQUIREMENTS. USE CLAMP 10495 OR 10497 OR WIRE TIE 8343 OR 108046 AND SCREW G67-XX-XXX OR G56-XX-XXX AS APPROPRIATE FOR INSTALLATION.

FOR ELECTRICAL TORQUE SPECIFICATIONS SEE DWG NO. 128783-01-000

FOR ELECTRICAL CALLOUTS SEE DWG NO. 121339-01-000

- 09A PREMIUM PACKAGE
- 265 CODES/STANDARDS-CSA/CMVSS
- 1B1 CODES/STANDARDS USA

| | | |
|--|--|-----|
| DESCRIPTION: WIRING INSTL-BODY, 110V | | |
| SHEET: 2 OF 7 | ITEM/PART NO: 000088024 / 32137301000 | REV |



- 10 SEE SHEET 5.
 - 9 SEE SHEET 4.
 - 8 SEE 110V WIRING DIAGRAM FOR ADDITIONAL INFORMATION.
 - 7 WIRES IN SIDEWALL.
 - 6 SEE WIRING INSTL-TV/DVD FOR ADDITIONAL INFORMATION.
 - 5 WIRES IN ROOF.
 - 4 CORD AND CONNECTORS ARE PART OF WIRE ASM-CHASSIS.
3. ALL GROUND WIRE TO BE COVERED WITH TUBING 8041-02-000.
 2. ALL 110V WIRE TO BE CLAMPED WITH CLAMP 10497-05-000 WITHIN 200MM OF OUTLET BOXES, USE SCREW G67-10-12U.
 1. AT MINIMUM ALL WIRES TO BE SUPPORTED AND SECURED PER CODE REQUIREMENTS. USE CLAMP 10495 OR 10497 OR WIRE TIE 8343 OR 108046 AND SCREW G67-XX-XXX OR G56-XX-XXX AS APPROPRIATE FOR INSTALLATION.

NOTES:

LOAD CENTER/ATS ASM
000038161 / 318153-02-000

4X4 BOX

9 RCP-B (BLU)

9 RCP-B (BRN)

THROW IN WIRE #6

9 110V CONNECTION

RECEPTACLE ASM-GFI,US-15A
000120175 / 322736-01-XXX } 1B1
RECEPTACLE ASM-GFI,CAN-15A
000120176 / 322737-01-XXX } 265
(BLU) (BATH)

THROW IN WIRE #5 (BLU)
(1200 LOOP)
(BRN-3)
(1200 LOOP)

THROW IN WIRE #1 (BLU)
TO RCP-TAILGATE
TO RCP-BED,REAR

RCP-2 (BLU) TAILGATE 9PC

RCP-1 (BLU) REFRIGERATOR 9PC

RCP-2 (BRN) BED, REAR

RCP-B (BRN) BUNK TV

RCP-2 (BRN) FRONT BED

9PC RCP-B (BLU) UNDER VANITY

THROW IN WIRE #1 9PC

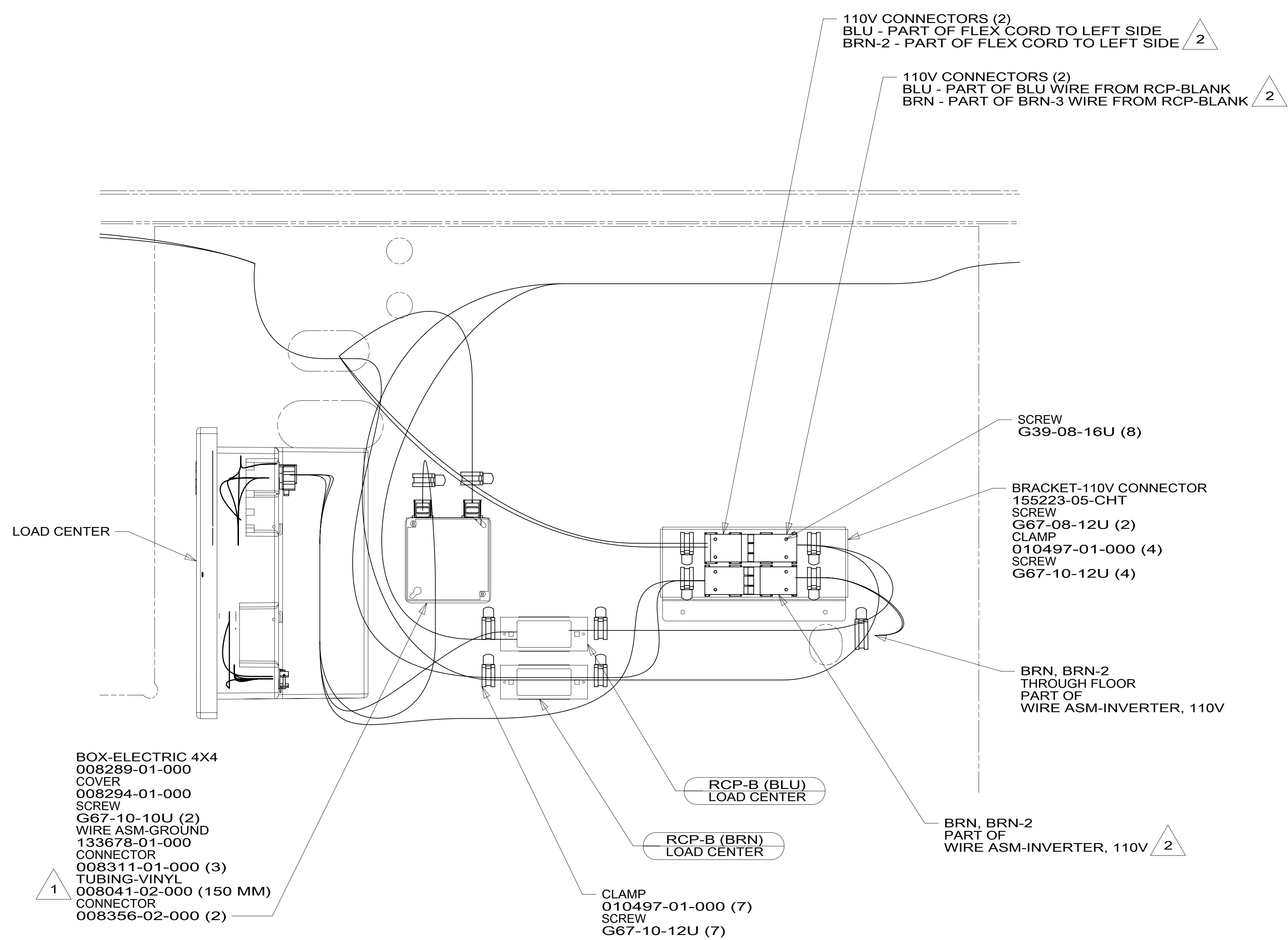
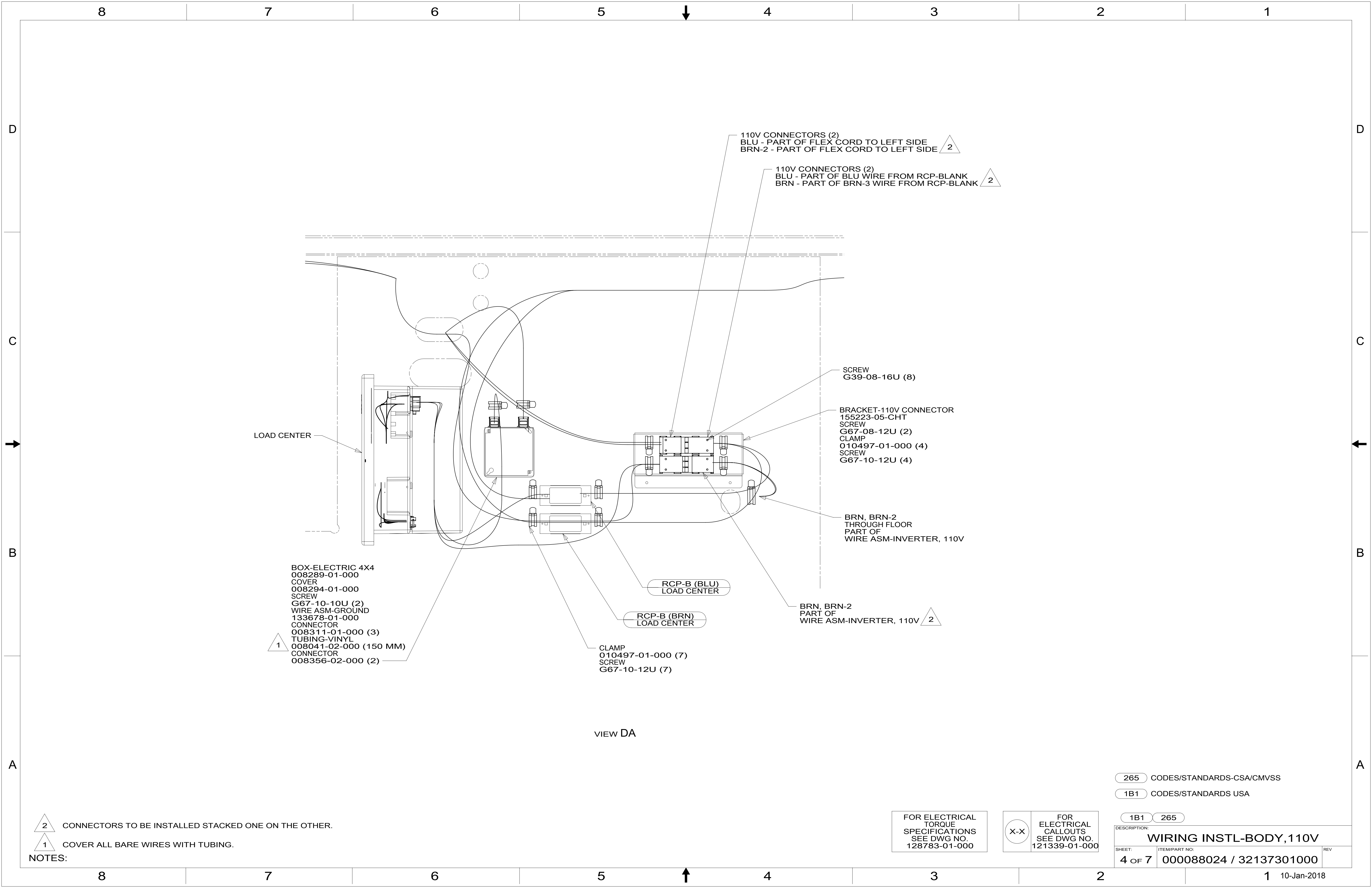
PART OF THROW IN #3

FOR ELECTRICAL TORQUE SPECIFICATIONS SEE DWG NO. 128783-01-000

FOR ELECTRICAL CALLOUTS SEE DWG NO. 121339-01-000

- 401 INVERTER-DC/AC, 1000 WATT
- 9PC TAILGATE PACKAGE
- 39A EXT RECEPTACLE DPLX 120VAC
- 265 CODES/STANDARDS-CSA/CMVSS
- 1B1 CODES/STANDARDS USA

| | | | |
|--------------------------------|-------------------------|---------|--|
| DESCRIPTION: | | 1B1 265 | |
| WIRING INSTL-BODY, 110V | | | |
| SHEET: | ITEM/PART NO.: | REV | |
| 3 OF 7 | 000088024 / 32137301000 | | |



VIEW DA

- 2 CONNECTORS TO BE INSTALLED STACKED ONE ON THE OTHER.
- 1 COVER ALL BARE WIRES WITH TUBING.

NOTES:

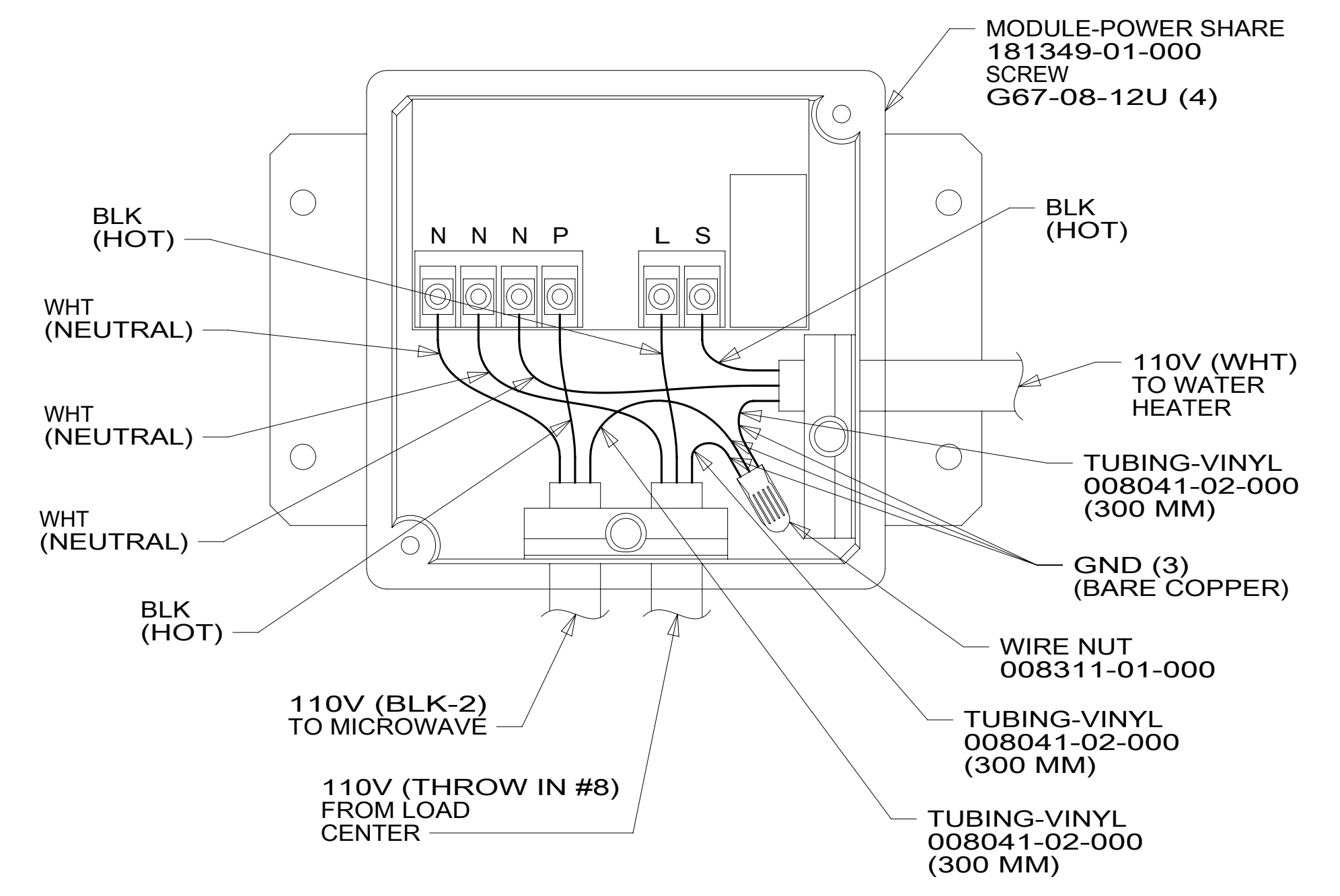
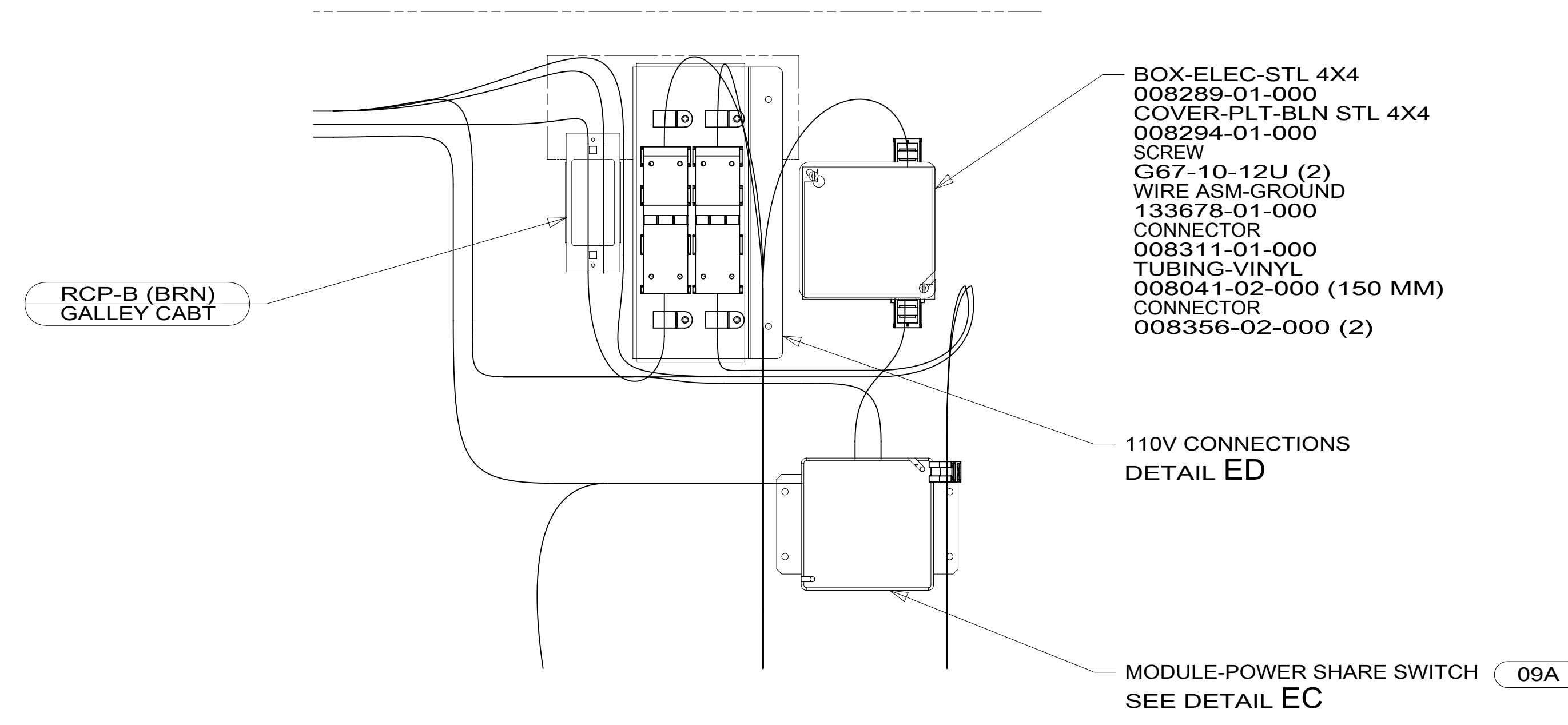
- 265 CODES/STANDARDS-CSA/CMVSS
- 1B1 CODES/STANDARDS USA

FOR ELECTRICAL
 TORQUE
 SPECIFICATIONS
 SEE DWG NO.
 128783-01-000

FOR
 ELECTRICAL
 CALLOUTS
 SEE DWG NO.
 121339-01-000

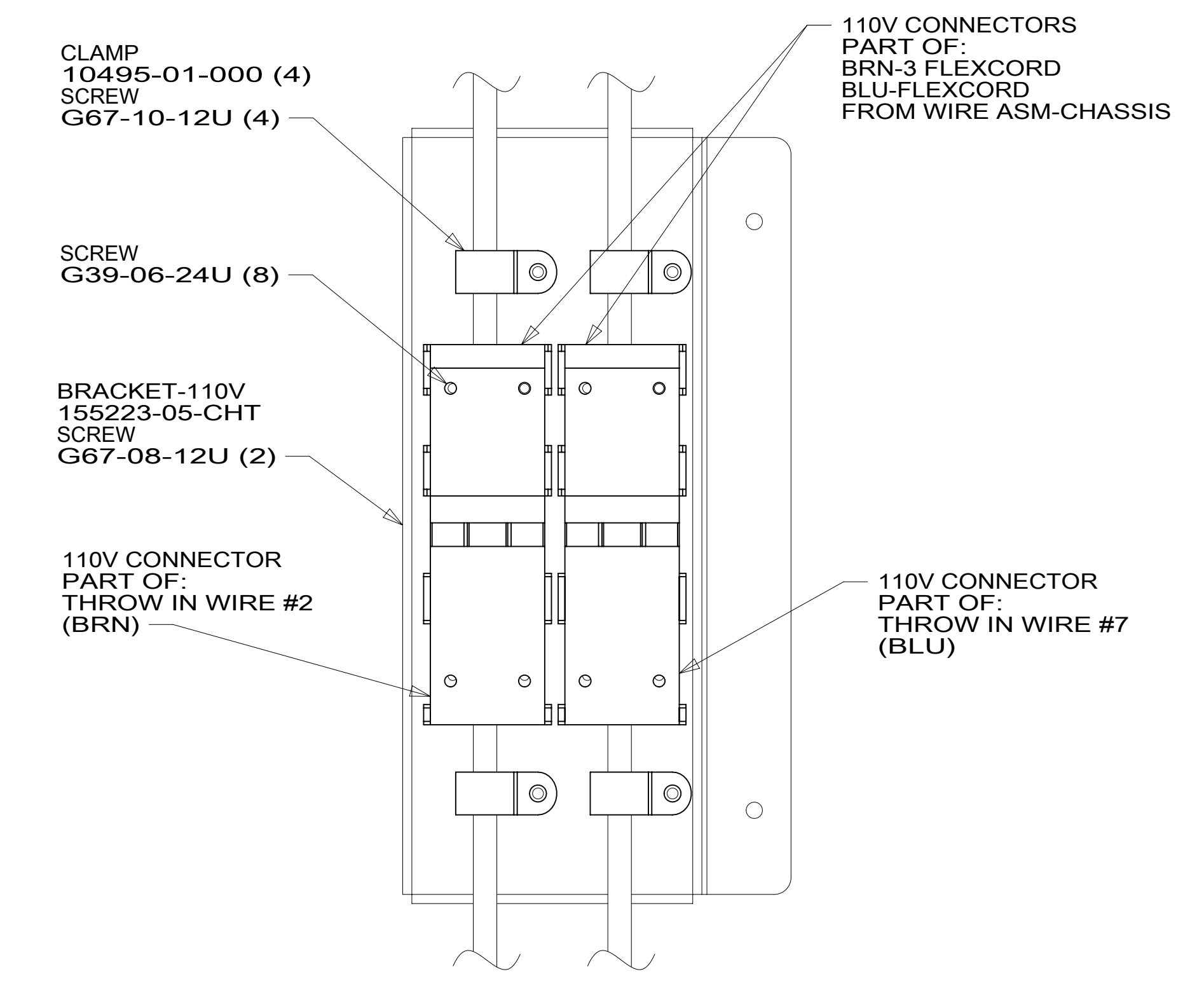
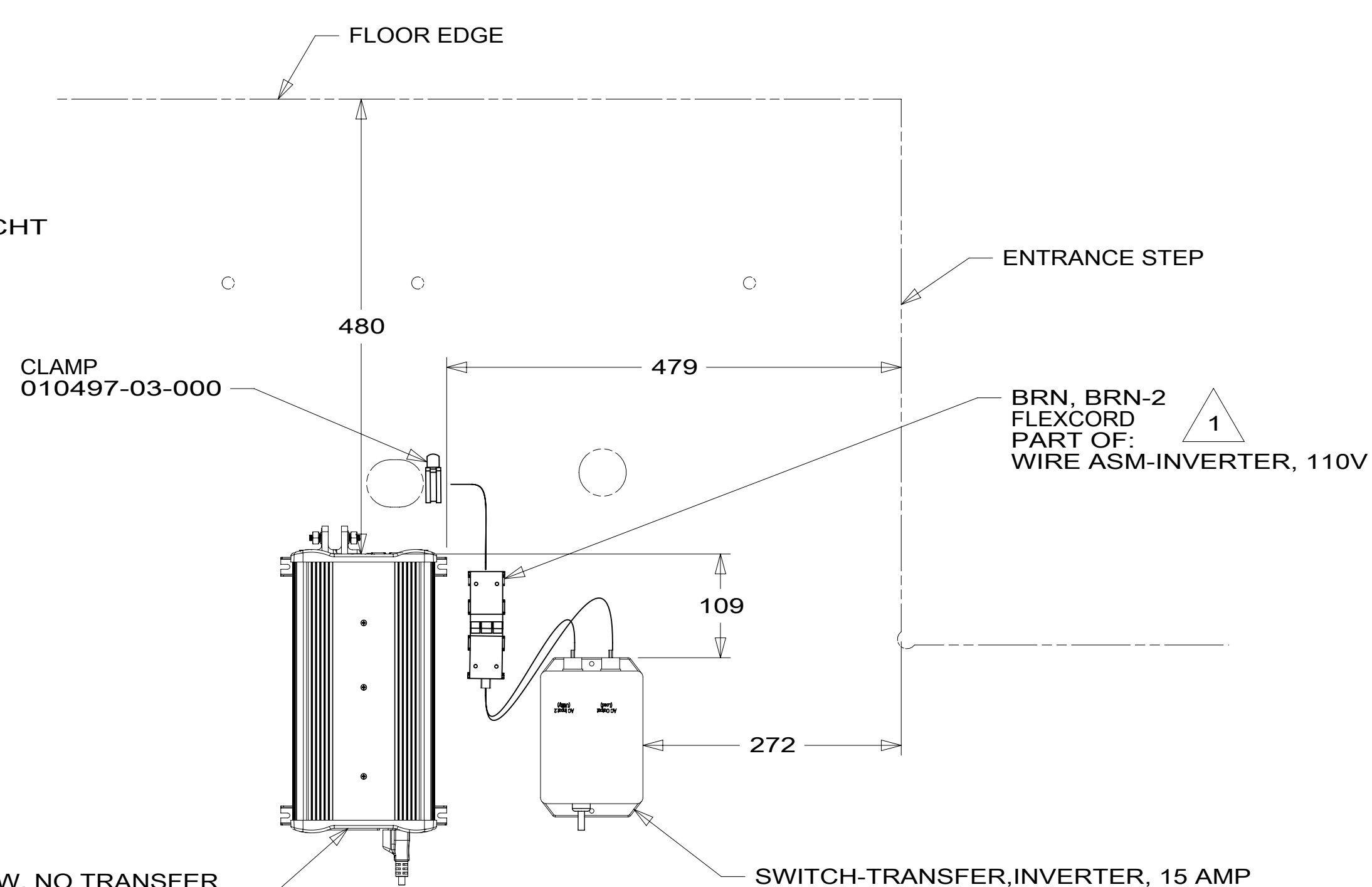
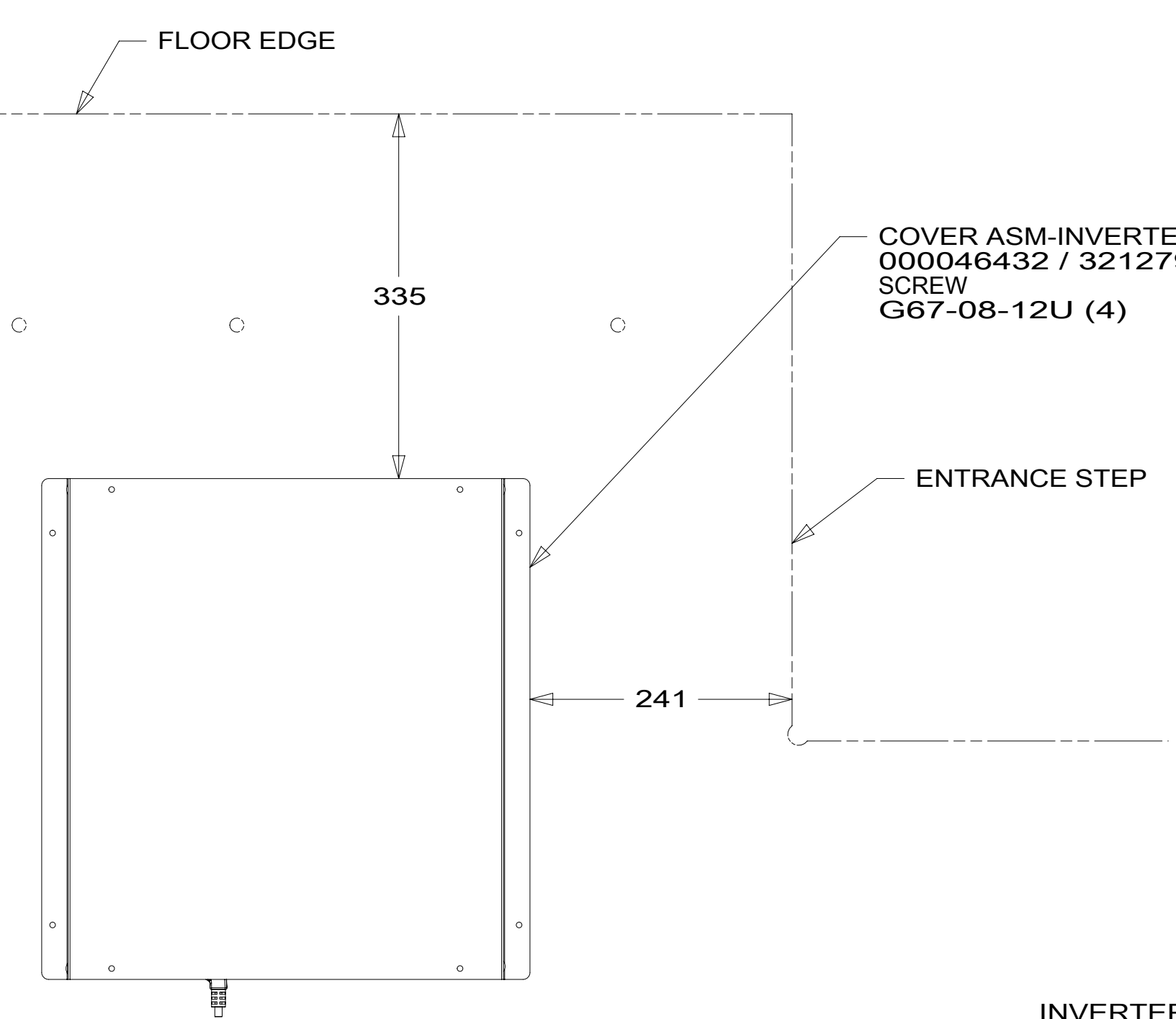
| | |
|---|--|
| 1B1 265 | |
| WIRING INSTL-BODY, 110V | |
| SHEET: 4 OF 7 | ITEM/PART NO: 000088024 / 32137301000 |
| REV 1 10-Jan-2018 | |

8 7 6 5 4 3 2 1



DETAIL EA

DETAIL EC 09A



DETAIL EB 401

DETAIL EB INVERTER COVER NOT SHOWN 401

VIEW ED

- 401 INVERTER-DC/AC, 1000 WATT
- 09A PREMIUM PACKAGE
- 265 CODES/STANDARDS-CSA/CMVSS
- 1B1 CODES/STANDARDS USA

NOTES:
 1 110V CONNECTORS TO BE INSTALLED STACKED ONE ON TOP OF EACH OTHER.

FOR ELECTRICAL TORQUE SPECIFICATIONS SEE DWG NO. 128783-01-000

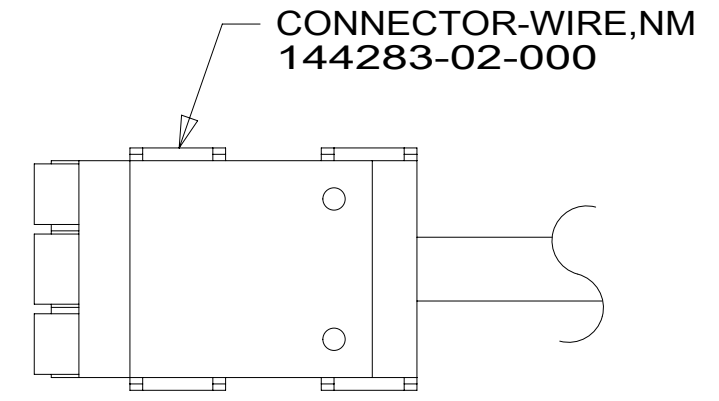
FOR ELECTRICAL CALLOUTS SEE DWG NO. 121339-01-000

| | |
|--------------------------------|--|
| DESCRIPTION: | |
| WIRING INSTL-BODY, 110V | |
| SHEET: 5 OF 7 | ITEM/PART NO.: 000088024 / 32137301000 |
| REV | |

8 7 6 5 4 3 2 1 10-Jan-2018

| | | | |
|-------|-----|---------------|-----|
| RED | 1B1 | 136135-07-035 | |
| | 265 | 136136-07-035 | |
| YEL | 1B1 | 136131-05-020 | |
| | 265 | 136134-05-020 | |
| BLK | 1B1 | 136135-06-015 | |
| | 265 | 136136-06-015 | |
| BLK-2 | 1B1 | 136135-22-044 | |
| | 265 | 136136-22-044 | |
| BRN | 1B1 | 136131-03-012 | 4 |
| | 265 | 136134-03-012 | 4 |
| BRN-2 | 1B1 | 136131-19-056 | 4 |
| | 265 | 136134-19-056 | 4 |
| BRN-3 | 1B1 | 136131-22-088 | 4 |
| | 265 | 136134-22-088 | 4 |
| BLU | 1B1 | 136131-02-019 | 4 |
| | 265 | 136134-02-019 | 4 |
| WHT | 1B1 | 136135-09-099 | 09A |
| | 265 | 136136-09-099 | 09A |

| | | | |
|--------------------------|-----|---------------------------|-------|
| THROW IN WIRE #1 | 1B1 | 136131-02-031 | 9PC |
| | 265 | 136134-02-031 | 9PC |
| THROW IN WIRE #2 | 1B1 | 136131-03-057 | |
| | 265 | 136134-03-057 | |
| THROW IN WIRE #4 | 1B1 | 136131-03-065 | |
| | 265 | 136134-03-065 | |
| THROW IN WIRE #5 | 1B1 | 136131-02-081 | |
| | 265 | 136134-02-081 | |
| THROW IN WIRE #6 | 1B1 | 136131-03-008 | |
| | 265 | 136134-03-008 | |
| THROW IN WIRE #7 | 1B1 | 136131-02-095 | 4 |
| | 265 | 136134-02-095 | 4 |
| THROW IN WIRE #8 | 1B1 | 136135-06-008 | 09A |
| | 265 | 136136-06-008 | 09A |
| MAIN EXTENSION CABLE ASM | 1B1 | 164957-13-045 | 5 093 |
| | 265 | 164957-14-045 | 5 093 |
| MAIN EXTENSION CABLE ASM | 1B1 | 164957-15-045 | 5 09A |
| | 265 | 164957-16-045 | 5 09A |
| GENERATOR CABLE ASM | 1B1 | 164957-15-032 | 6 093 |
| | 265 | 164957-16-032 | 6 093 |
| GENERATOR CABLE ASM | 1B1 | 164957-09-036 | 6 09A |
| | 265 | 164957-10-036 | 6 09A |
| GROUND MAIN | | 136145-06-020 | |
| WIRE ASM-INVERTER,110V | 1B1 | 000112201 / 321712-01-000 | 401 |
| | 265 | 000154181 / 326100-01-000 | 401 |



DETAIL FA

- 6 WIRE PREP TO INSTALL ON POWER CORD BOX OR AUTO TRANSFER SWITCH ASM. GENERATOR END WILL BE INSTALLED TO WEATHERPROOF BOX ON THE LINE.
- 5 WIRE PREP TO INSTALL ON POWER CORD BOX OR AUTO TRANSFER SWITCH ASM. LOAD CENTER END WILL BE INSTALLED ON THE LINE.
- 4 SEE DETAIL FA FOR CONNECTOR INSTALLATION.

- 3. SEE WIRING INSTL-BODY, 12V FOR ADDITIONAL INFORMATION.
- 2. SECURE WIRES TO BACKSIDE OF LOAD CENTER WITH WIRE TIE 116673-01-000.
- 1. ALL GROUND WIRES TO BE COVERED WITH TUBING 8041-02-000.

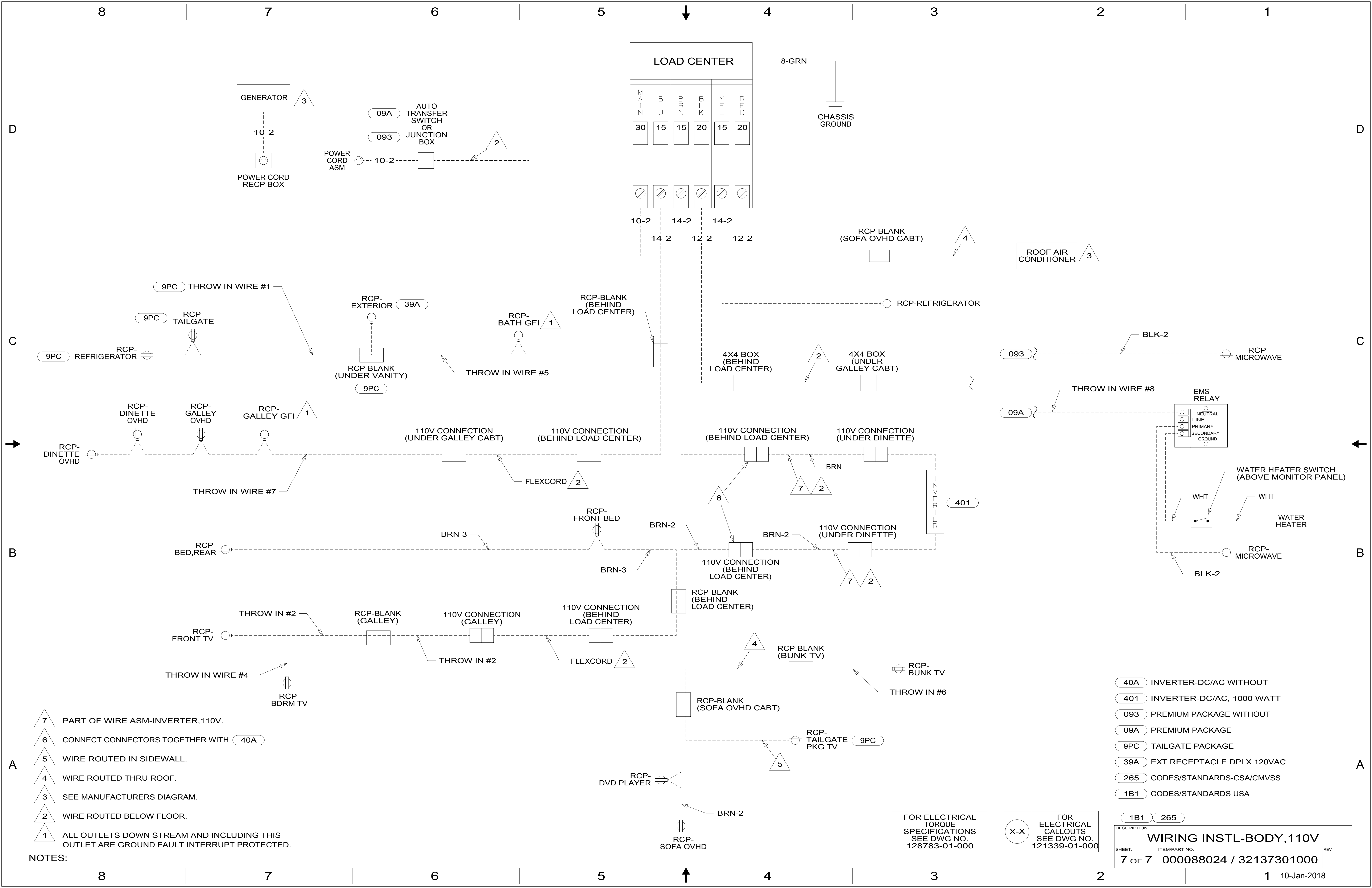
NOTES:

- 401 INVERTER-DC/AC, 1000 WATT
- 093 PREMIUM PACKAGE WITHOUT
- 09A PREMIUM PACKAGE
- 9PC TAILGATE PACKAGE
- 265 CODES/STANDARDS-CSA/CMVSS
- 1B1 CODES/STANDARDS USA

FOR ELECTRICAL TORQUE SPECIFICATIONS SEE DWG NO. 128783-01-000

FOR ELECTRICAL CALLOUTS SEE DWG NO. 121339-01-000

| | |
|--------------------------------|-------------------------|
| DESCRIPTION: | 1B1 265 |
| WIRING INSTL-BODY, 110V | |
| SHEET: | 6 OF 7 |
| ITEM/PART NO.: | 000088024 / 32137301000 |
| REV | |



- NOTES:
- △ 7 PART OF WIRE ASM-INVERTER, 110V.
 - △ 6 CONNECT CONNECTORS TOGETHER WITH 40A
 - △ 5 WIRE ROUTED IN SIDEWALL.
 - △ 4 WIRE ROUTED THRU ROOF.
 - △ 3 SEE MANUFACTURERS DIAGRAM.
 - △ 2 WIRE ROUTED BELOW FLOOR.
 - △ 1 ALL OUTLETS DOWN STREAM AND INCLUDING THIS OUTLET ARE GROUND FAULT INTERRUPT PROTECTED.

- 40A INVERTER-DC/AC WITHOUT
- 401 INVERTER-DC/AC, 1000 WATT
- 093 PREMIUM PACKAGE WITHOUT
- 09A PREMIUM PACKAGE
- 9PC TAILGATE PACKAGE
- 39A EXT RECEPTACLE DPLX 120VAC
- 265 CODES/STANDARDS-CSA/CMVSS
- 1B1 CODES/STANDARDS USA

FOR ELECTRICAL TORQUE SPECIFICATIONS SEE DWG NO. 128783-01-000

FOR ELECTRICAL CALLOUTS SEE DWG NO. 121339-01-000

| | | |
|--------------------------------|-------------------------|------|
| DESCRIPTION: | | |
| WIRING INSTL-BODY, 110V | | |
| SHEET: | ITEM/PART NO.: | REV: |
| 7 OF 7 | 000088024 / 32137301000 | |