

- 13. WHEN INSTALLING TOILET, SCRAP THE SUPPLIED LAGGING BOLTS FOR PLASTIC BRACKET TO FLOOR ONLY. USE SCREW 000G11-08-06U (2) TO LOCATE AND FASTEN STEEL BRACKET TO FLOOR. THEN FASTEN DOWN PLASTIC BRACKETS TO FLOOR USING SCREW 000G42-04-24U (2) AND SUPPLIED PLASTIC ANCHORS. PLACE TOILET OVER THE BRACKETS AND FASTEN USING SUPPLIED HARDWARE AND THEN USE WHITE CAPS TO COVER SCREWS.
- 12. REPLACE SUPPLIED STUD AND WINGNUT WITH FASTENER AND INSTALL WITH SUPPLIED RETAINING ANGLE.
- 11. PREP THE SURFACE PER MANUFACTURERS INSTRUCTIONS BEFORE APPLYING THE HEATING PAD.
- 10. SEE WIRING INSTL-BODY FOR ELECTRICAL CONNECTION.
- 9. SEE DRAWING 061607 FOR INSTALLATION OF GROMMETS.
- 8. SECURE DRAINAGE PIPES TO CABINET USING WIRE TIE 108046-02-000, AND SCREW 000G67-10-12U AT INTERVALS OF NOT OF NOT MORE THAN 4 FEET APART.
- 7. SECURE VENT PIPE TO FLOOR WITH CLAMP 000156237 / 326663-02-000 (2), SCREW 000G67-10-12U (2), BRACKET 136878-01-CHT (2).
- 6. VENT PIPE MUST PROJECT 51 MIN AND 64 MAX ABOVE ROOF FOR PROPER FIT AND FUNCTION. ADD S-1 (000156099 / 326607-01-CHT SEAL-VENT PIPE) AROUND PIPE ON ROOF BEFORE VENT CAP IS INSTALLED.
- 5. SEAL AROUND SHOWER WITH SILICONE.
- 4. USE SMOOTH PLUMBERS PUTTY 167459-01-000 TO SEAL STRAINER (0.2 PER STRAINER).
- 3. ALL PIPE AND FITTINGS TO BE ASSEMBLED WITH SOLVENT 004020-01-000 (USA), 004020-02-000 (CAN)
- 2. SLOPE OF TRAP ARM MUST BE 6 PER 305 mm.
- 1. SLOPE OF HORIZONTAL PIPING TO BE MINIMUM OF 3 PER 305 mm.

NOTES:

- 23T DRAINAGE SYSTEM-HEATED
- 265 CODES/STANDARDS-CSA/CMVSS
- 1B1 CODES/STANDARDS USA

WINNEBAGO
COPYRIGHT 2018 WINNEBAGO INDUSTRIES, INC.

DSNR:		ALL DIMENSIONS ARE IN MILLIMETERS	
DIFTR:			
UNSPECIFIED TOLERANCES:	MATERIAL:		
WHOLE DIM (X) :	3		
ONE-PLACE (X.X) :	1.5		
TWO-PLACE (X.XX) :	0.50		
ANGLE :	1°		
REFER TO ES0018 FOR FASTENER TIGHTENING GUIDELINES	WEIGHT: (LBS)	FIRST USED: (REF)	
		18 524G	
DESCRIPTION:			
DRAINAGE SYSTEM INSTL			
SHEET:	ITEM/PART NO.:	REV	
1 OF 4	000046932 / 32129001000		
REF:		1 02-Jul-2018	

FOR DRAINAGE CALLOUTS SEE DWG NO. 000211962 / 303370-01-000

8 7 6 5 4 3 2 1

D
C
B
A

SINK-GALLEY
 00013705 / 311763-01-CHT
 SCREW-METRIC
 OMG02U-04-030 (6) Δ 12
 SCREW-PFH
 000G13-07-12U (6)
 STRAINER-SINK
 092303-01-000 (2) Δ 4
 SEAL
 091255-03-000
 (2130)

DETAIL BB

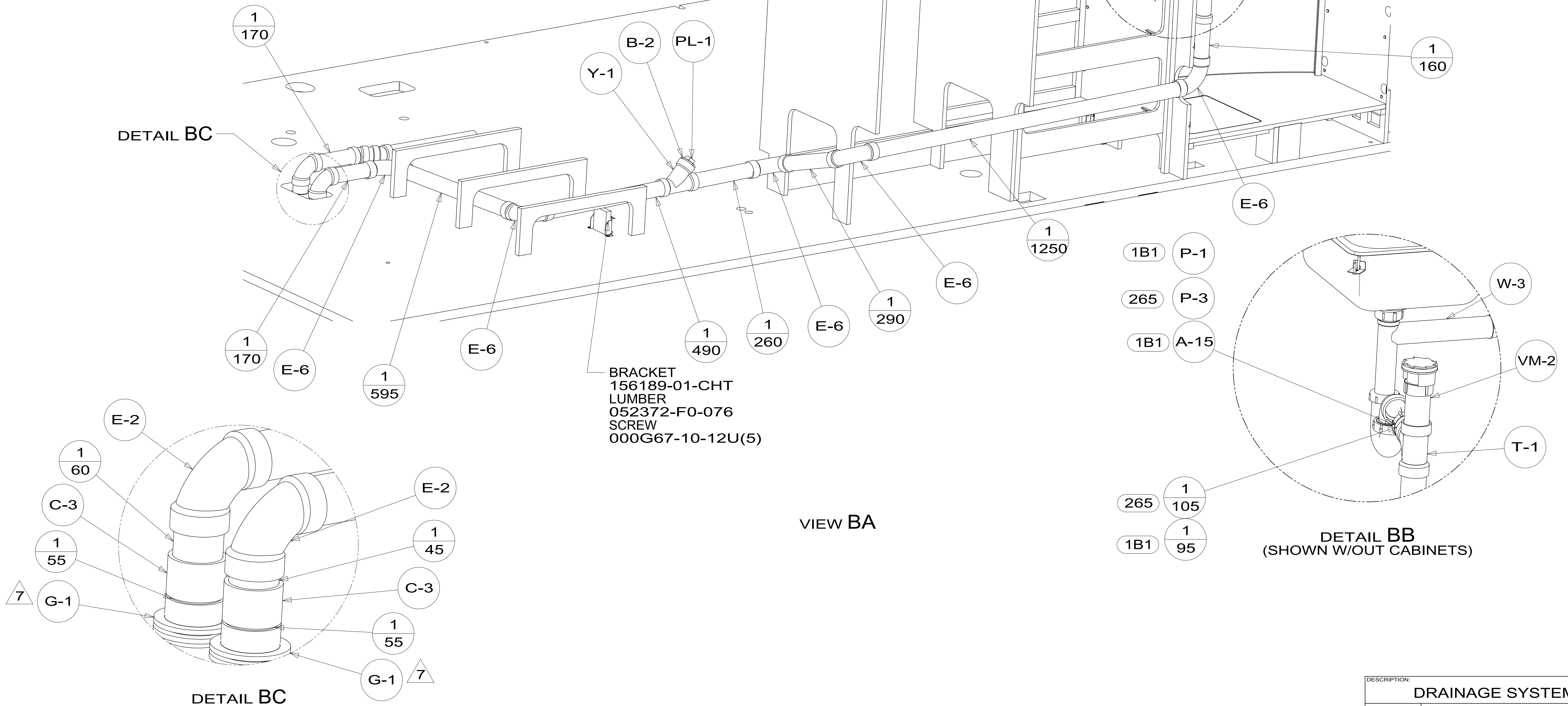
DETAIL BC

BRACKET
 156189-01-CHT
 LUMBER
 052372-F0-076
 SCREW
 000G67-10-12U(5)

VIEW BA

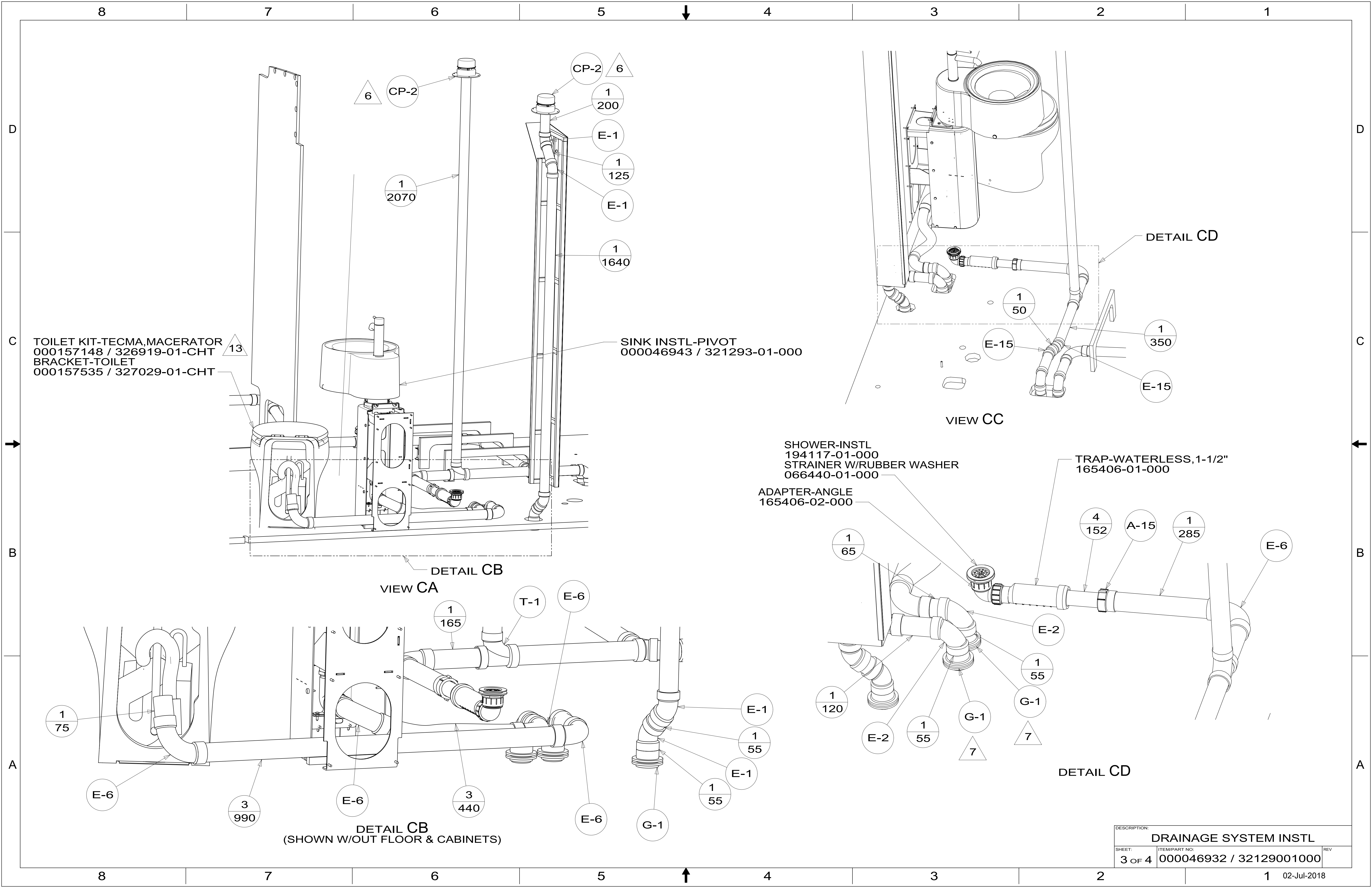
DETAIL BB
 (SHOWN W/OUT CABINETS)

DETAIL BC



DESCRIPTION:		
DRAINAGE SYSTEM INSTL		
SHEET:	ITEM/PART NO:	REV
2 OF 4	000046932 / 32129001000	

8 7 6 5 4 3 2 1 02-Jul-2018



TOILET KIT-TECMA,MACERATOR
000157148 / 326919-01-CHT
BRACKET-TOILET
000157535 / 327029-01-CHT

SINK INSTL-PIVOT
000046943 / 321293-01-000

SHOWER-INSTL
194117-01-000
STRAINER W/RUBBER WASHER
066440-01-000

TRAP-WATERLESS,1-1/2"
165406-01-000

DETAIL CB
(SHOWN W/OUT FLOOR & CABINETS)

DETAIL CD

DESCRIPTION: DRAINAGE SYSTEM INSTL		
SHEET: 3 OF 4	ITEM/PART NO: 000046932 / 32129001000	REV

02-Jul-2018

8 7 6 5 4 3 2 1

CRADLE ASM-HOLDING TANK
137611-04-CHT
ULOCK-RISER
151437-10-CHT (2)
BOLT
000C12-06-20U (4)
NUT
000D39-06-00U (4)

HANGER-STRAP
140220-19-CHT
NUT
000D39-06-00U

TANK ASM-HOLDING,40 GAL
172748-05-000

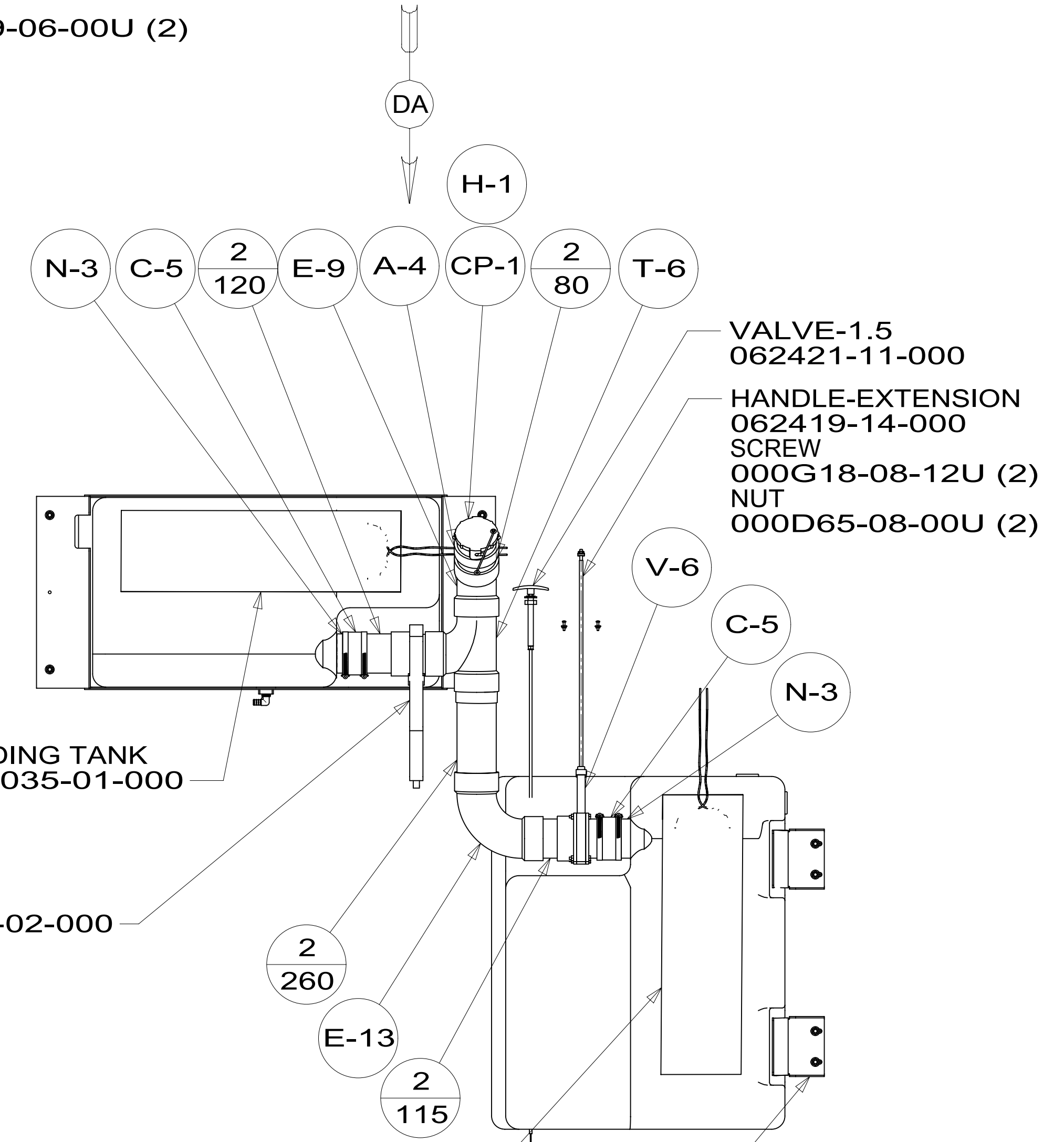
TANK ASM-HOLDING,34 GAL
000158930 / 327499-01-000

INSULATION-DRAINAGE COMPT
168508-40-000

BRACKET ASM-TANK MOUNT
167936-03-CHT
ULOCK-RISER
151437-12-CHT
BOLT
000C12-06-20U (2)
NUT
000D39-06-00U (2)

HOLDER-RING
141443-05-CHT
BOLT
000C26-05-16U
NUT
000D39-05-00U

VIEW DA



10 11

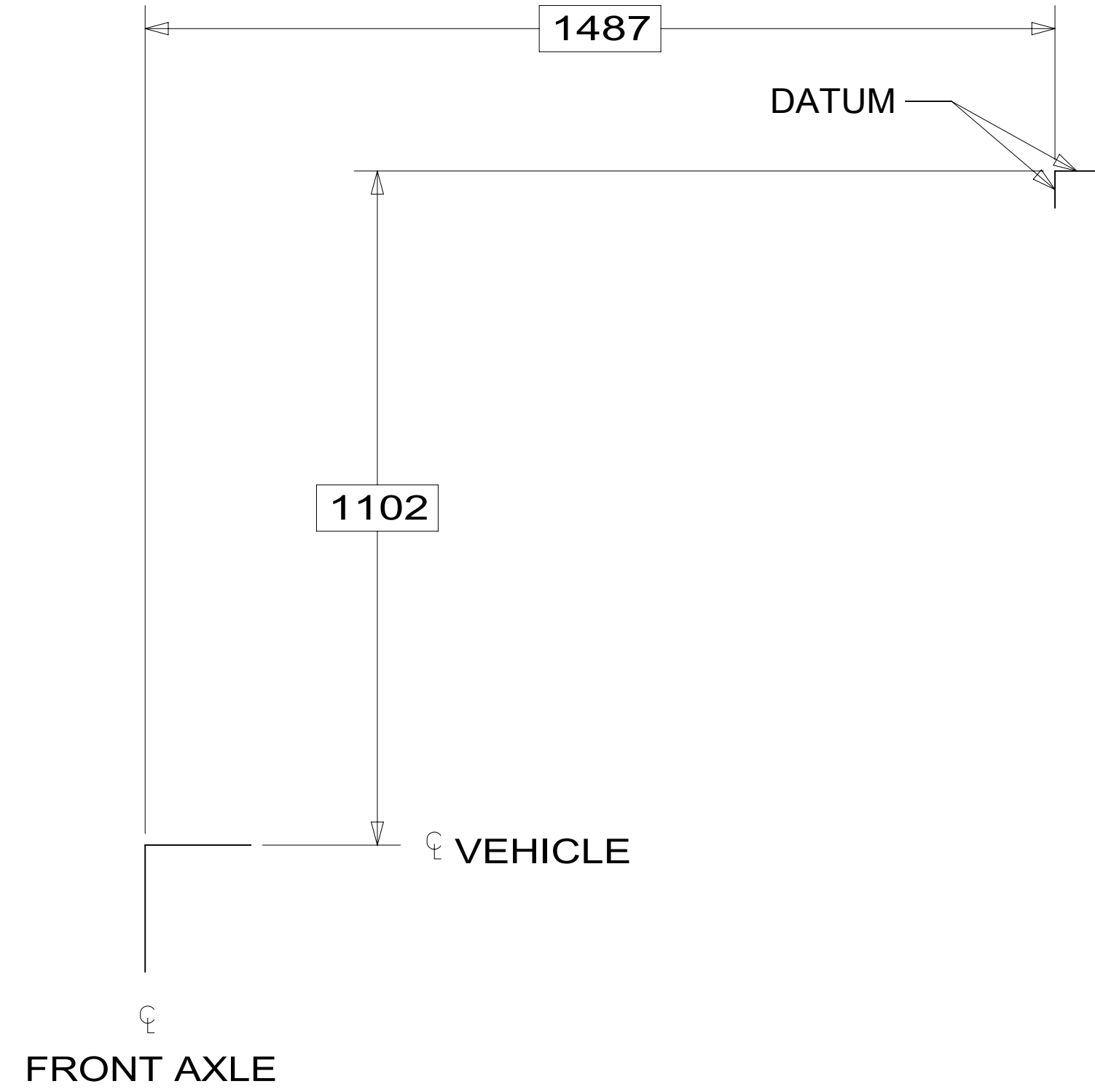
23T PAD-HEATER,HOLDING TANK
000167187 / 330035-01-000

VALVE
129147-02-000

10 11

23T PAD-HEATER,HOLDING TANK
000167187 / 330035-01-000

BRACKET ASM-TANK MOUNT
167936-05-CHT
ULOCK-RISER
151437-12-CHT
BOLT
000C12-06-20U (2)
NUT
000D39-06-00U (2)



BOTTOM VIEW SHOWING ONLY DRAINS AND TANKS

DESCRIPTION: DRAINAGE SYSTEM INSTL		
SHEET: 4 OF 4	ITEM/PART NO: 000046932 / 32129001000	REV

8 7 6 5 4 3 2 1 02-Jul-2018