

8 7 6 5 4 3 2 1

D

D

C

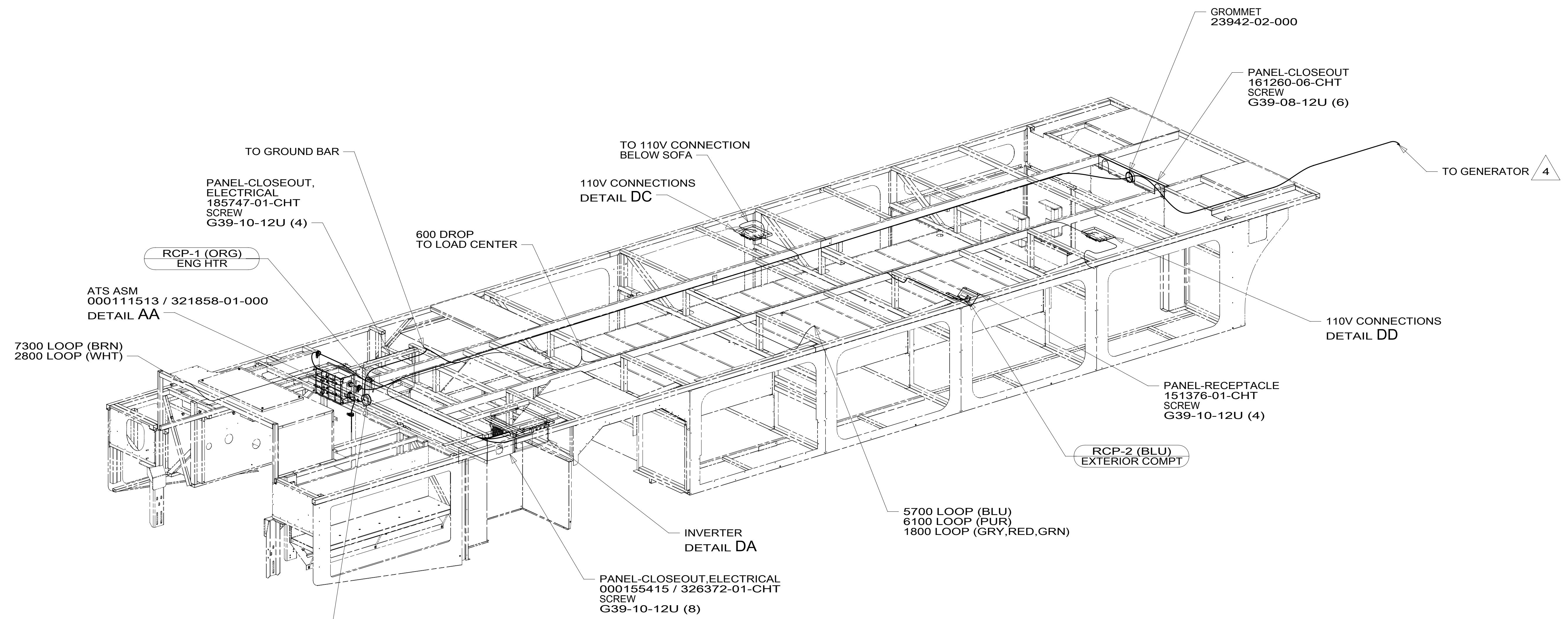
C

B

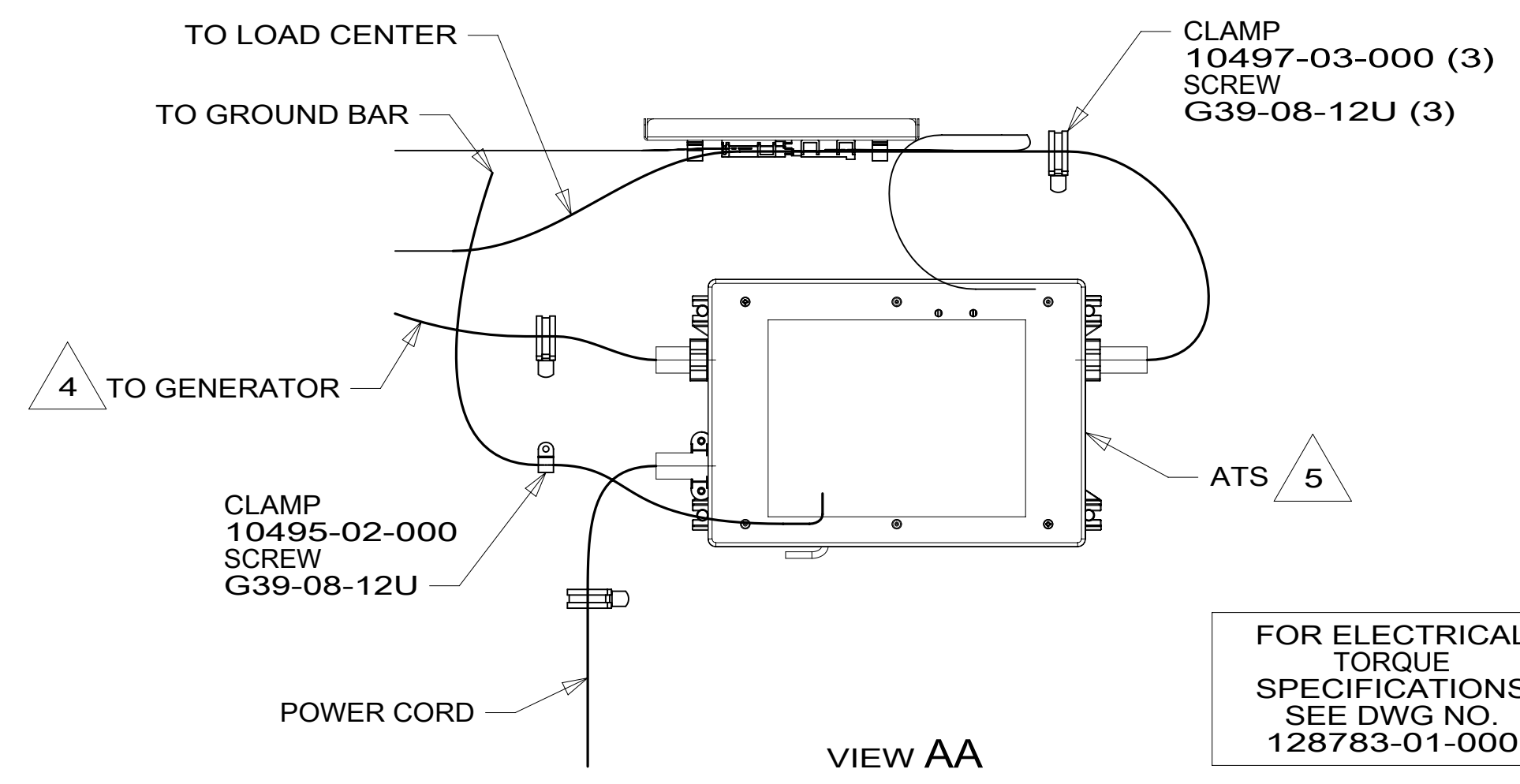
B

A

A



- NOTES:
- 6 ROUTE ENGINE HEATER POWER CORD THROUGH GROMMET.
 - 5 SEE LOAD CENTER/ATS ASM FOR ADDITIONAL INFORMATION.
 - 4 SEE GENERATOR INSTL FOR ADDITIONAL INFORMATION.
 - 3. WIRES THAT REST ON WIRE TRAYS ARE TO BE TIED DOWN WITH WIRE TIE 8343-04-000.
 - 2. CLAMP TO FLOOR SUPPORT TUBES AS NECESSARY WITH CLAMP 10497-01-000.
 - 1. ALL WIRES TO BE SECURED WITH CLAMP 10495 OR 10497 OR WIRE TIE 8343 OR 108046 EVERY 600 MM. USE SCREW G67-XX-XXX OR G56-XX-XXX AS APPROPRIATE FOR INSTALLATION.



FOR ELECTRICAL TORQUE SPECIFICATIONS SEE DWG NO. 128783-01-000

FOR ELECTRICAL CALLOUTS SEE DWG NO. 121339-01-000

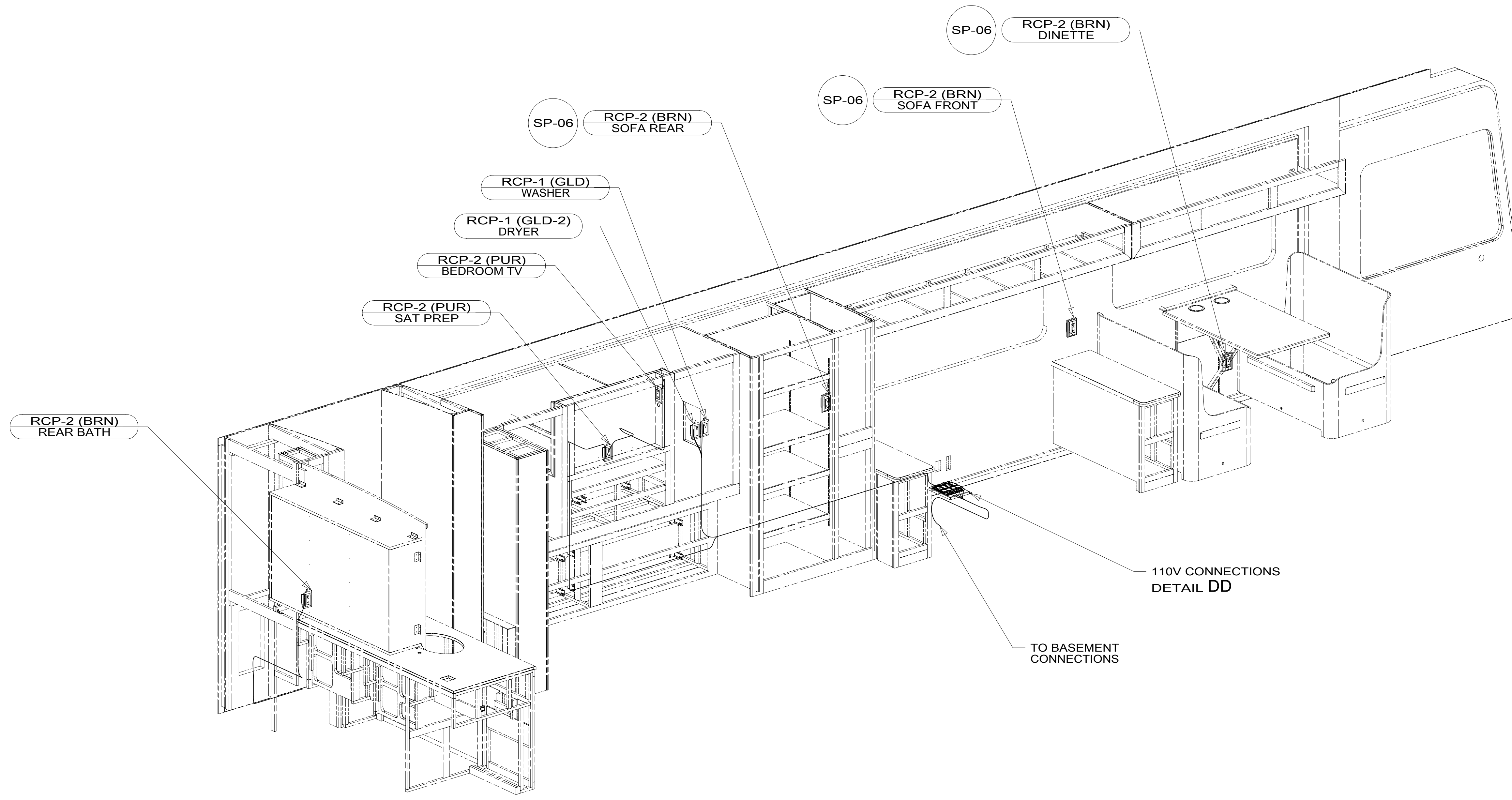
- 265 CODES/STANDARDS-CSA/CMVSS
- 1B1 CODES/STANDARDS USA
- 1B1 265

WINNEBAGO
COPYRIGHT 2016 WINNEBAGO INDUSTRIES, INC.

| | | |
|--|-----------------------------------|-------------|
| DSNR: | ALL DIMENSIONS ARE IN MILLIMETERS | |
| DFFR: | MATERIAL: | |
| UNSPECIFIED TOLERANCES: | WHOLE DIM (X) : | 3 |
| | ONE-PLACE (X.X) : | 1.5 |
| | TWO-PLACE (X.XX) : | 0.50 |
| | ANGLE : | 1° |
| REFER TO ES0018 FOR FASTENER TIGHTENING GUIDELINES | WEIGHT: (LBS) | FIRST USED: |
| | | 18 L38F |
| WIRING INSTL-BODY, 110V | | |
| SHEET: | ITEM/PART NO.: | REV: |
| 1 OF 6 | 000045775 / 32106301000 | |
| REF: | 1 02-Apr-2018 | |

8 7 6 5 4 3 2 1

D
C
B
A



NOTES:
 1. ALL WIRES TO BE SECURED WITH CLAMP 10495 OR 10497 OR WIRE TIE 8343 OR 108046 EVERY 600 MM. USE SCREW G67-XX-XXX OR G56-XX-XXX AS APPROPRIATE FOR INSTALLATION.

FOR ELECTRICAL TORQUE SPECIFICATIONS SEE DWG NO. 128783-01-000

FOR ELECTRICAL CALLOUTS SEE DWG NO. 121339-01-000

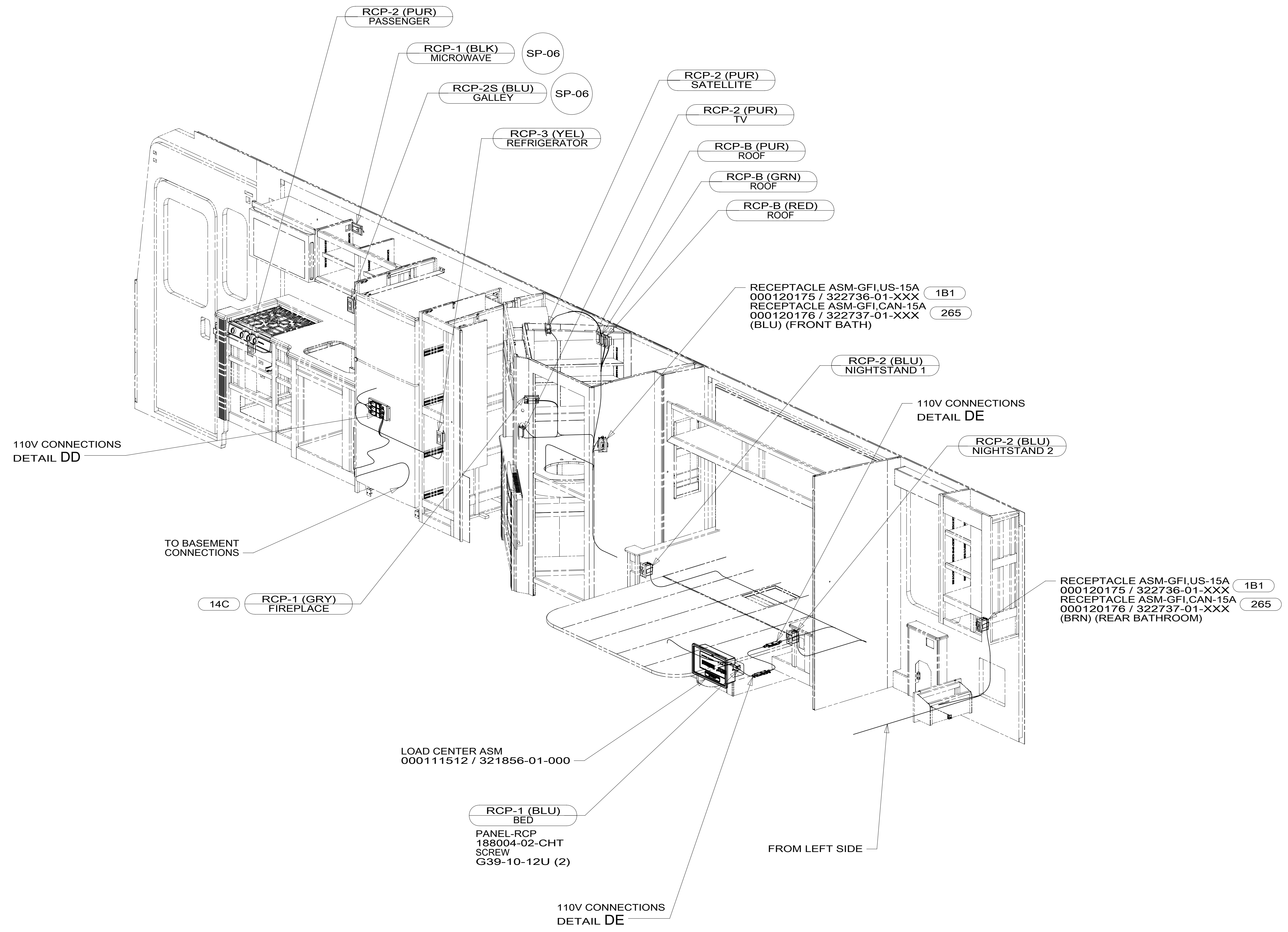
265 CODES/STANDARDS-CSA/CMVSS
 1B1 CODES/STANDARDS USA

| | | |
|--------------------------------|-------------------------|-----|
| DESCRIPTION: | 1B1 265 | |
| WIRING INSTL-BODY, 110V | | |
| SHEET: | ITEM/PART NO.: | REV |
| 2 OF 6 | 000045775 / 32106301000 | |

8 7 6 5 4 3 2 1 02-Apr-2018

8 7 6 5 4 3 2 1

D
C
B
A



- 14C FIREPLACE-ELECTRIC
- 265 CODES/STANDARDS-CSA/CMVSS
- 1B1 CODES/STANDARDS USA

NOTES:

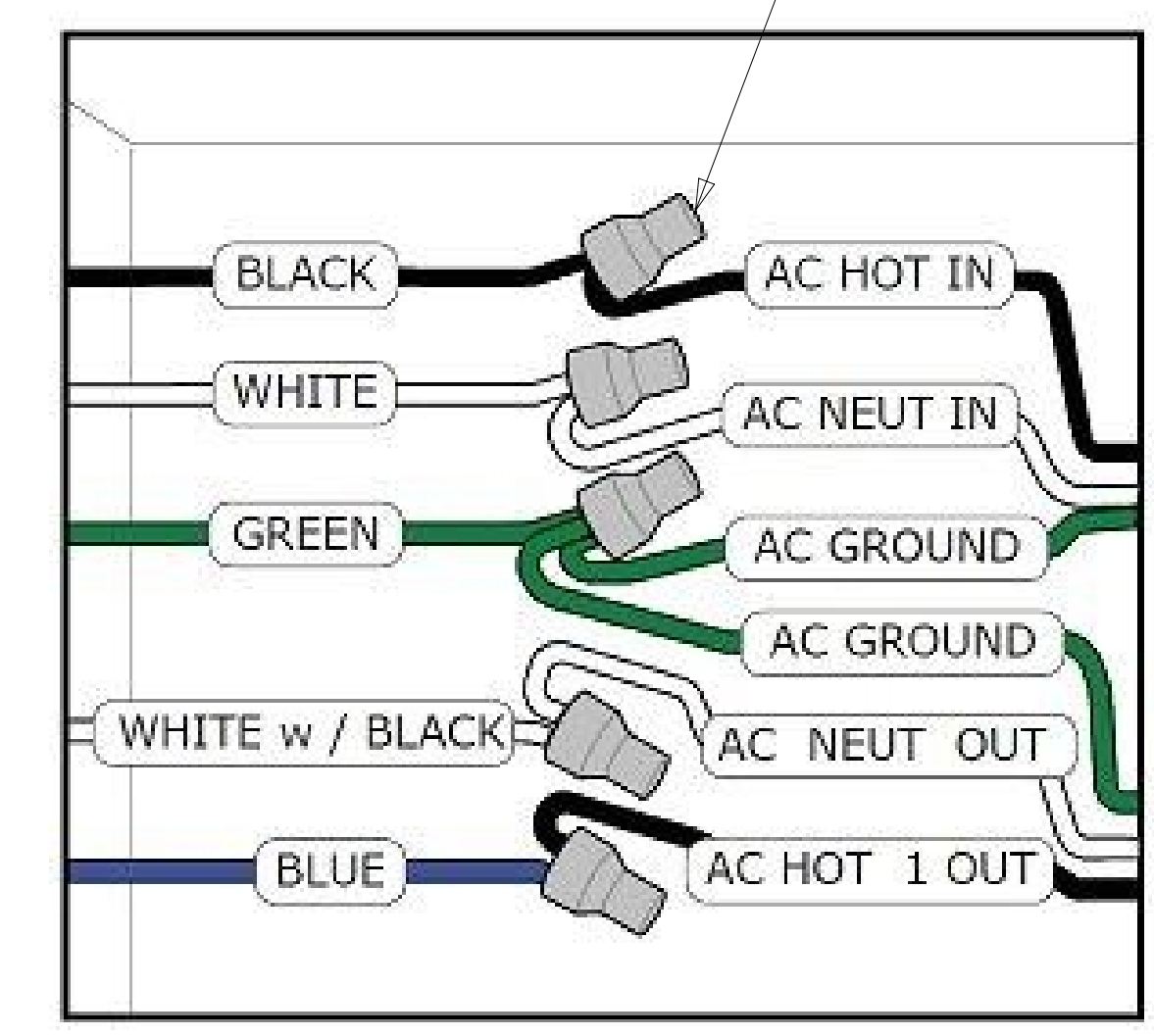
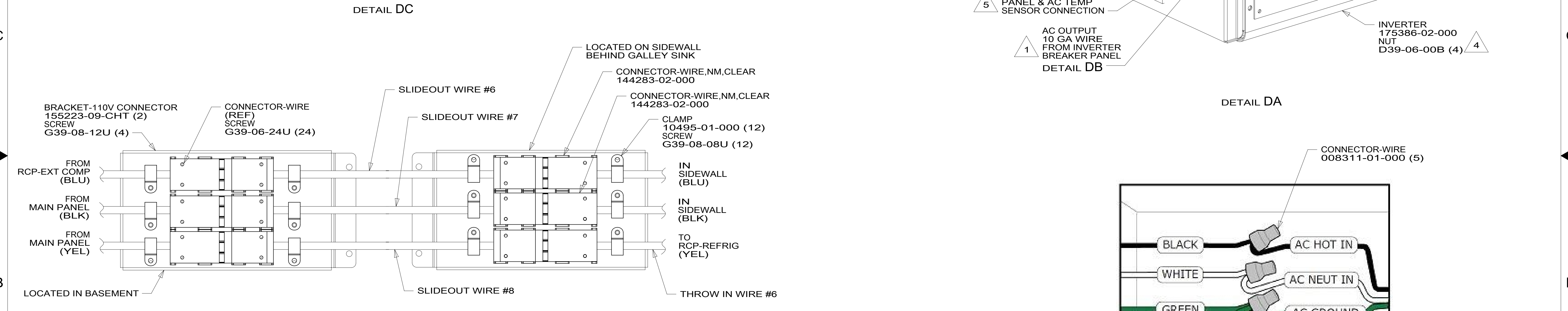
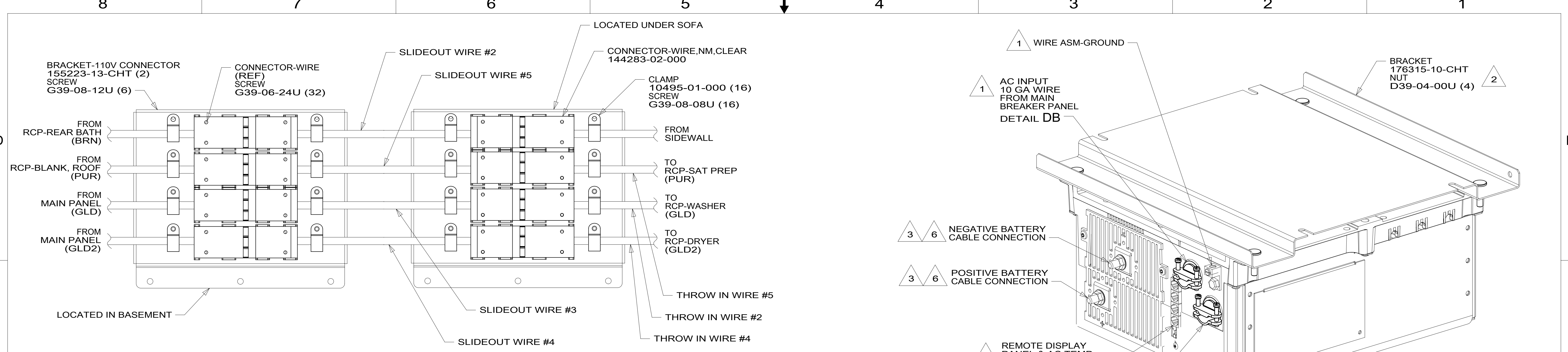
1. ALL WIRES TO BE SECURED WITH CLAMP 10495 OR 10497 OR WIRE TIE 8343 OR 108046 EVERY 600 MM. USE SCREW G67-XX-XXX OR G56-XX-XXX AS APPROPRIATE FOR INSTALLATION.

FOR ELECTRICAL TORQUE SPECIFICATIONS SEE DWG NO. 128783-01-000

FOR ELECTRICAL CALLOUTS SEE DWG NO. 121339-01-000

| | | |
|--------------------------------|-------------------------|-----|
| DESCRIPTION: | 1B1 265 | |
| WIRING INSTL-BODY, 110V | | |
| SHEET: | ITEM/PART NO.: | REV |
| 3 OF 6 | 000045775 / 32106301000 | |

8 7 6 5 4 3 2 1 02-Apr-2018



- NOTES:
- 6 DO NOT USE POWER/AIR TOOL TO INSTALL NUT. TORQUE TO 10-12 FT LBS. DO NOT USE A HAMMER.
 - 5 CABLES PART OF WIRE ASM-COACH.
 - 4 SEE INVERTER/CHARGER OWNER'S MANUAL FOR ADDITIONAL INFORMATION.
 - 3 SEE WIRING INSTL-CHASSIS FOR ADDITIONAL INFORMATION.
 - 2 BRACKET IS LOCATED BY HOLES ON BRACKET.
 - 1 SEE LOAD CENTER/ATS ASM FOR ADDITIONAL INFORMATION.

FOR ELECTRICAL TORQUE SPECIFICATIONS SEE DWG NO. 128783-01-000

FOR ELECTRICAL CALLOUTS SEE DWG NO. 121339-01-000

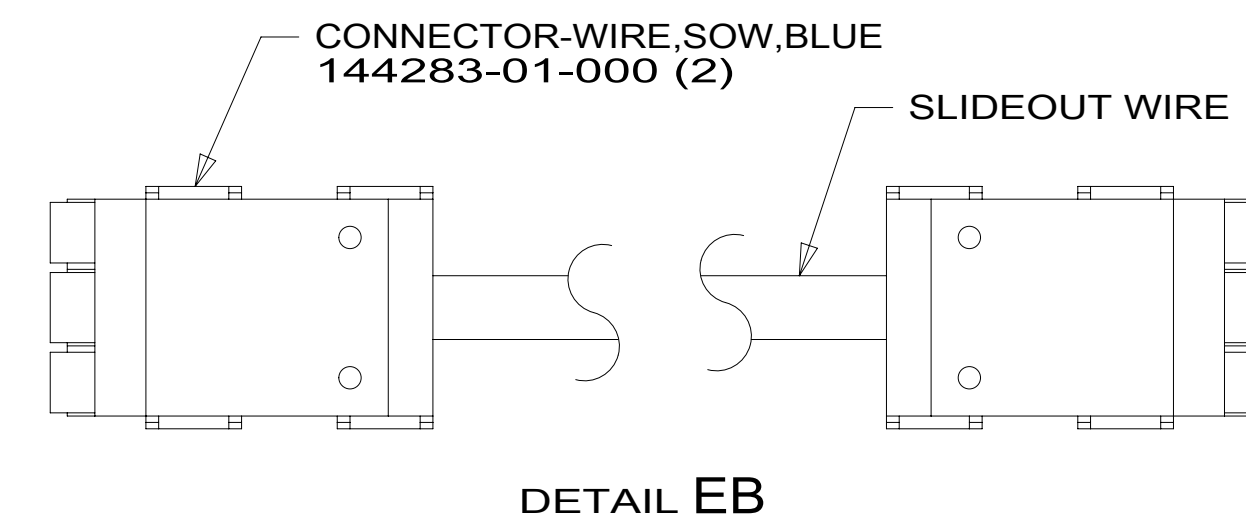
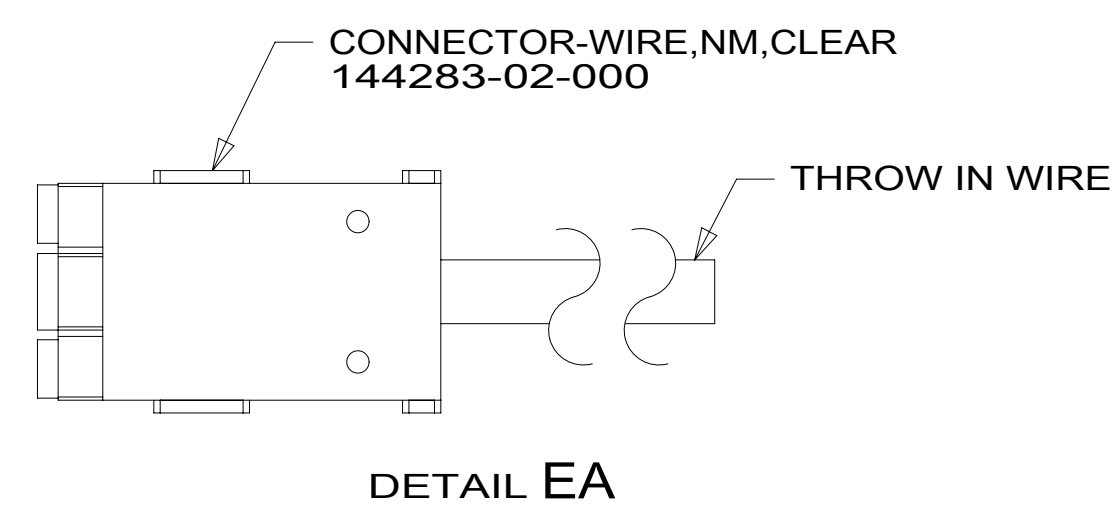
| | |
|--|--|
| 265 | CODES/STANDARDS-CSA/CMVSS |
| 1B1 | CODES/STANDARDS USA |
| 1B1 | 265 |
| DESCRIPTION: WIRING INSTL-BODY, 110V | |
| SHEET: 4 OF 6 | ITEM/PART NO: 000045775 / 32106301000 |
| REV 02-Apr-2018 | |

| | | | |
|-------|-----|---------------|-----|
| RED | 1B1 | 136135-07-068 | |
| | 265 | 136136-07-068 | |
| GRN | 1B1 | 136135-08-068 | |
| | 265 | 136136-08-068 | |
| YEL | 1B1 | 136131-05-085 | 1 |
| | 265 | 136134-05-085 | 1 |
| GLD | 1B1 | 136131-10-060 | 1 |
| | 265 | 136134-10-060 | 1 |
| GLD-2 | 1B1 | 136131-20-060 | 1 |
| | 265 | 136134-20-060 | 1 |
| BLU | 1B1 | 136131-02-171 | 1 |
| | 265 | 136134-02-171 | 1 |
| BRN | 1B1 | 136131-03-226 | 1 |
| | 265 | 136134-03-226 | 1 |
| PUR | 1B1 | 136131-04-154 | 1 |
| | 265 | 136134-04-154 | 1 |
| WHT | 1B1 | 136135-09-095 | 53K |
| | 265 | 136136-09-095 | 53K |

| | | | |
|---------------------------|-----|---------------|-----|
| ORG | 1B1 | 136131-16-045 | |
| | 265 | 136134-16-045 | |
| BLK | 1B1 | 136131-06-073 | 1 |
| | 265 | 136134-06-073 | 1 |
| GRY | 1B1 | 136131-15-069 | 14C |
| | 265 | 136134-15-069 | 14C |
| INVERTER CHARGER MAIN | 1B1 | 136137-01-060 | |
| | 265 | 136138-01-060 | |
| INVERTER CHARGER SUB MAIN | 1B1 | 136137-01-060 | |
| | 265 | 136138-01-060 | |
| CABLE ASM-MAIN,6 AWG | | 176841-01-041 | |
| MAIN GROUND | | 136145-01-029 | |
| ATS GROUND | | 136145-01-015 | |
| INVERTER GROUND | | 136145-04-027 | |
| GENERATOR CABLE ASM | | 136148-02-109 | |

| | | | |
|------------------|-----|---------------|---|
| THROW IN WIRE #1 | 1B1 | 136131-02-064 | 1 |
| | 265 | 136134-02-064 | 1 |
| THROW IN WIRE #2 | 1B1 | 136131-10-032 | 1 |
| | 265 | 136134-10-032 | 1 |
| THROW IN WIRE #3 | 1B1 | 136131-02-003 | 1 |
| | 265 | 136134-02-003 | 1 |
| THROW IN WIRE #4 | 1B1 | 136131-20-032 | 1 |
| | 265 | 136134-20-032 | 1 |
| THROW IN WIRE #5 | 1B1 | 136131-04-072 | 1 |
| | 265 | 136134-04-072 | 1 |
| THROW IN WIRE #6 | 1B1 | 136131-05-018 | 1 |
| | 265 | 136134-05-018 | 1 |

| | | |
|------------------|---------------|---|
| SLIDEOUT WIRE #1 | 136151-02-014 | 2 |
| SLIDEOUT WIRE #2 | 136151-03-022 | 2 |
| SLIDEOUT WIRE #3 | 136151-10-022 | 2 |
| SLIDEOUT WIRE #4 | 136151-20-022 | 2 |
| SLIDEOUT WIRE #5 | 136151-04-022 | 2 |
| SLIDEOUT WIRE #6 | 136151-02-029 | 2 |
| SLIDEOUT WIRE #7 | 136151-06-029 | 2 |
| SLIDEOUT WIRE #8 | 136151-05-029 | 2 |



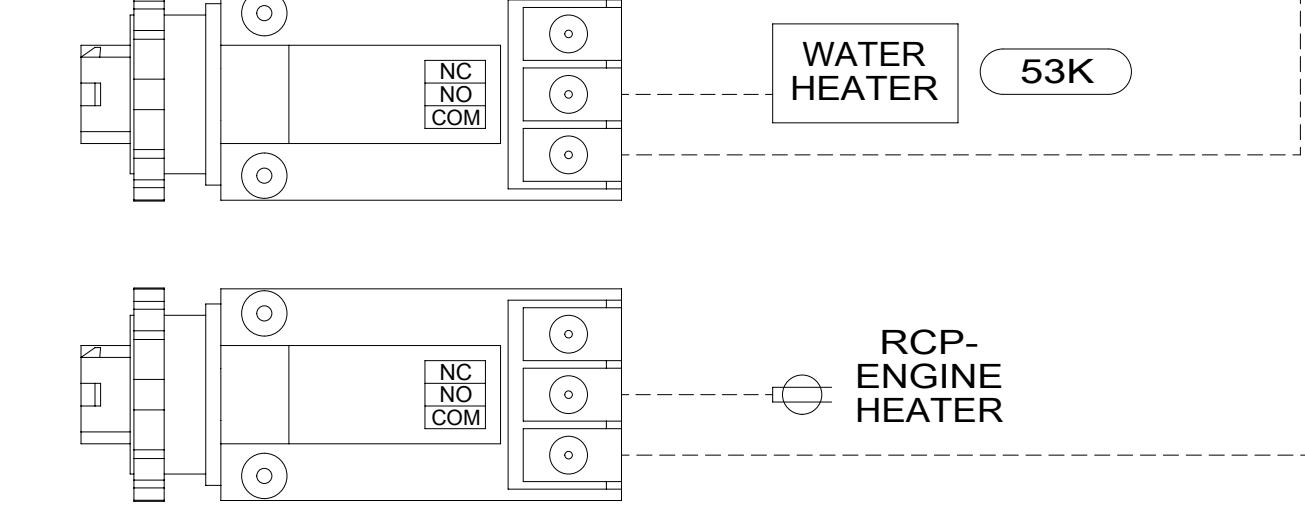
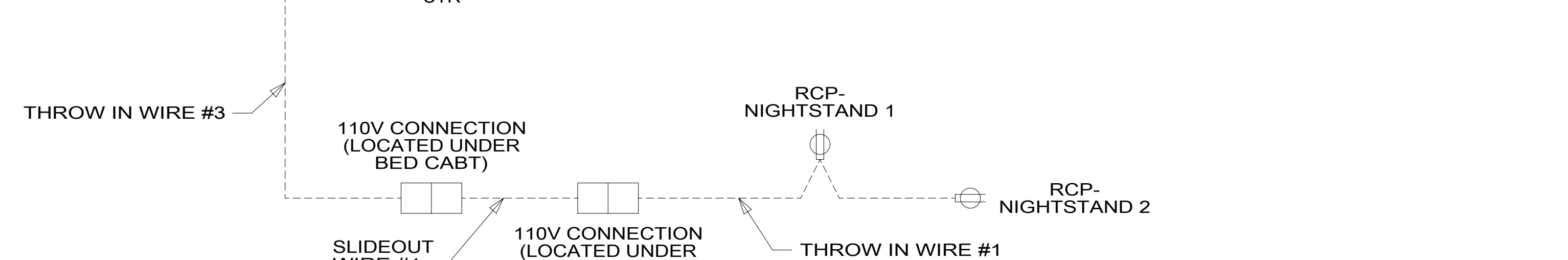
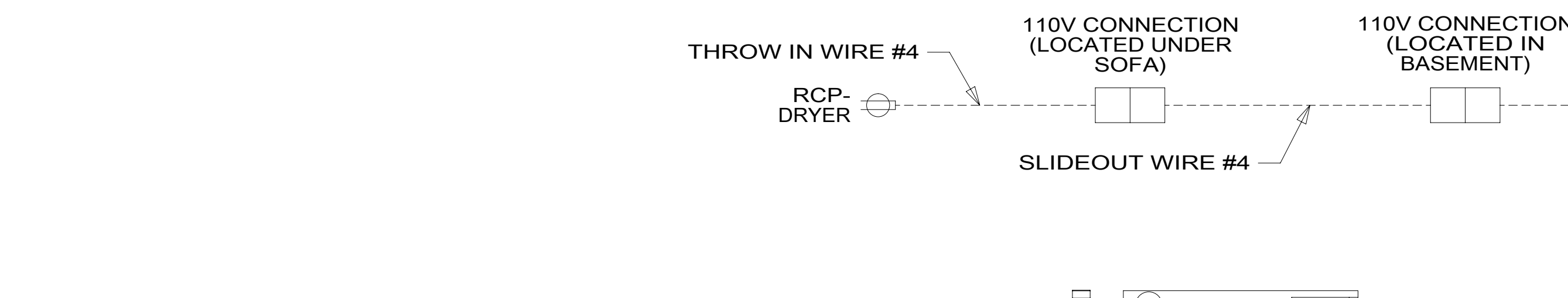
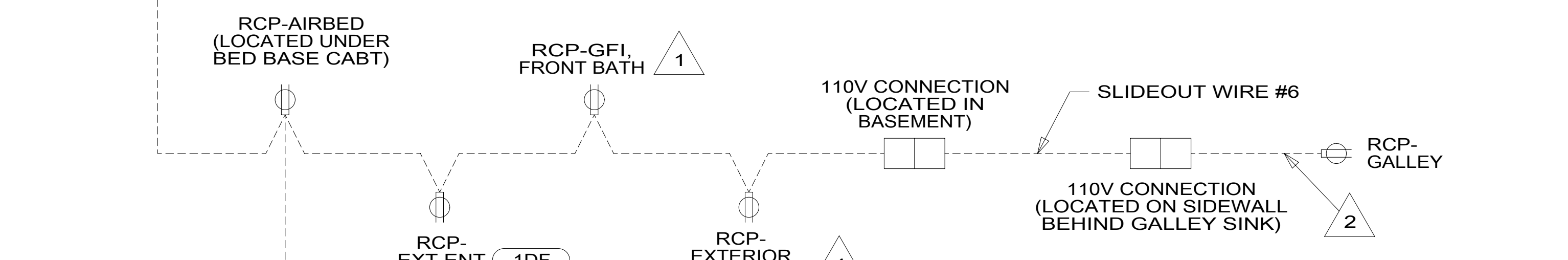
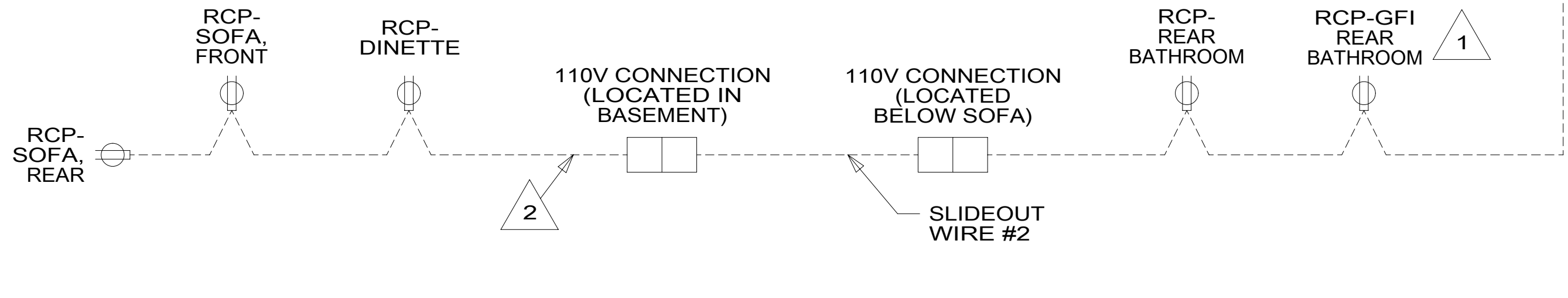
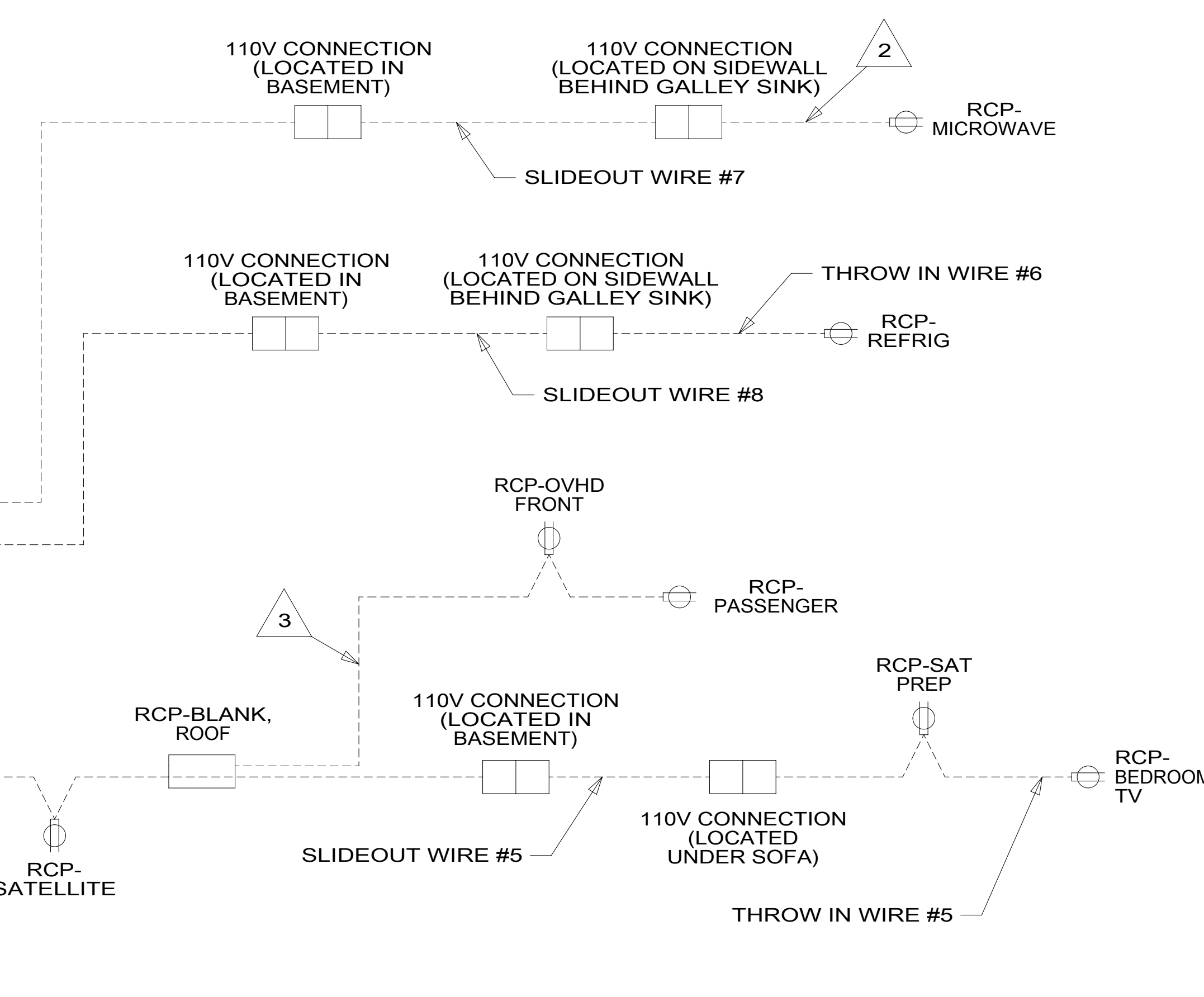
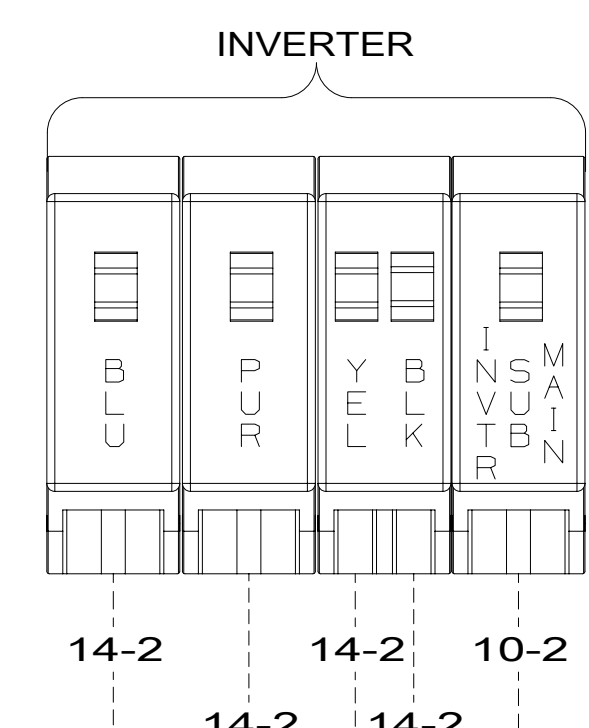
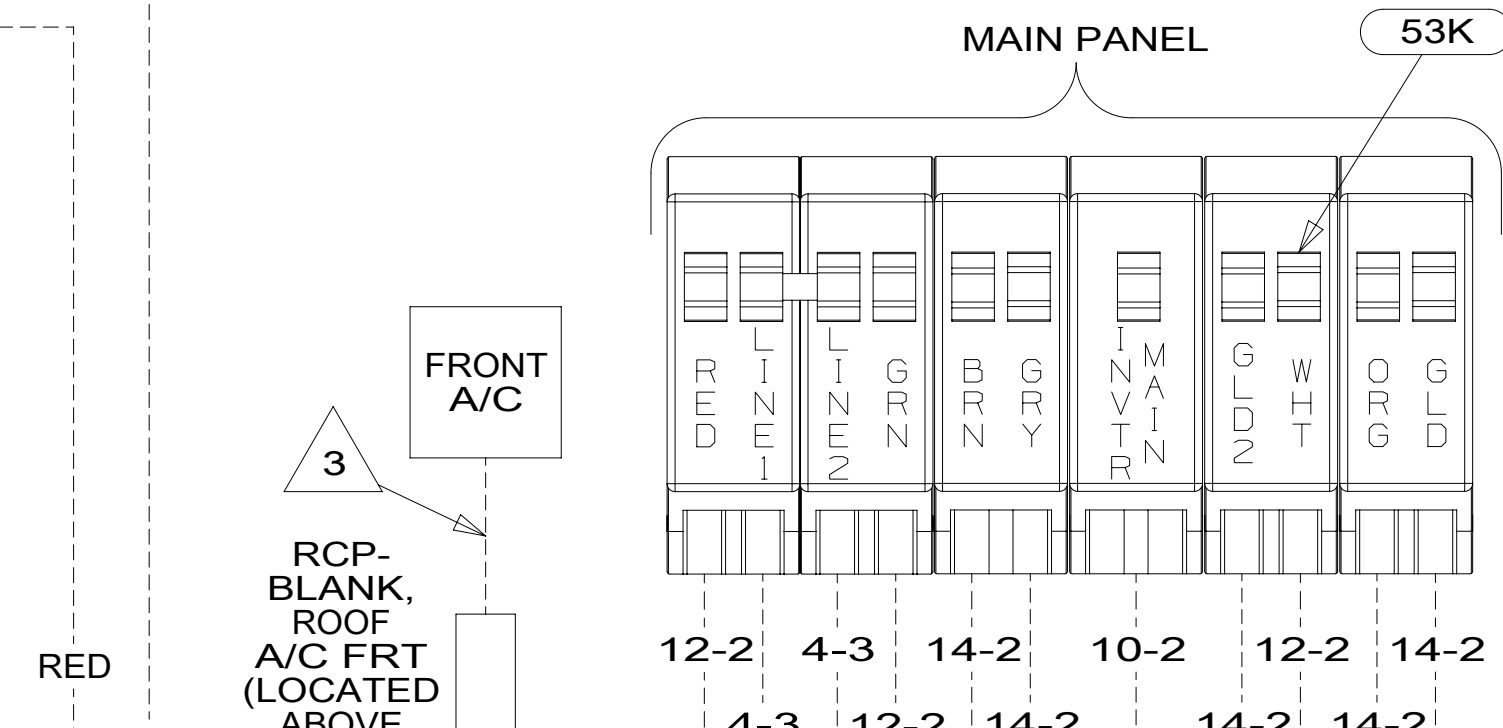
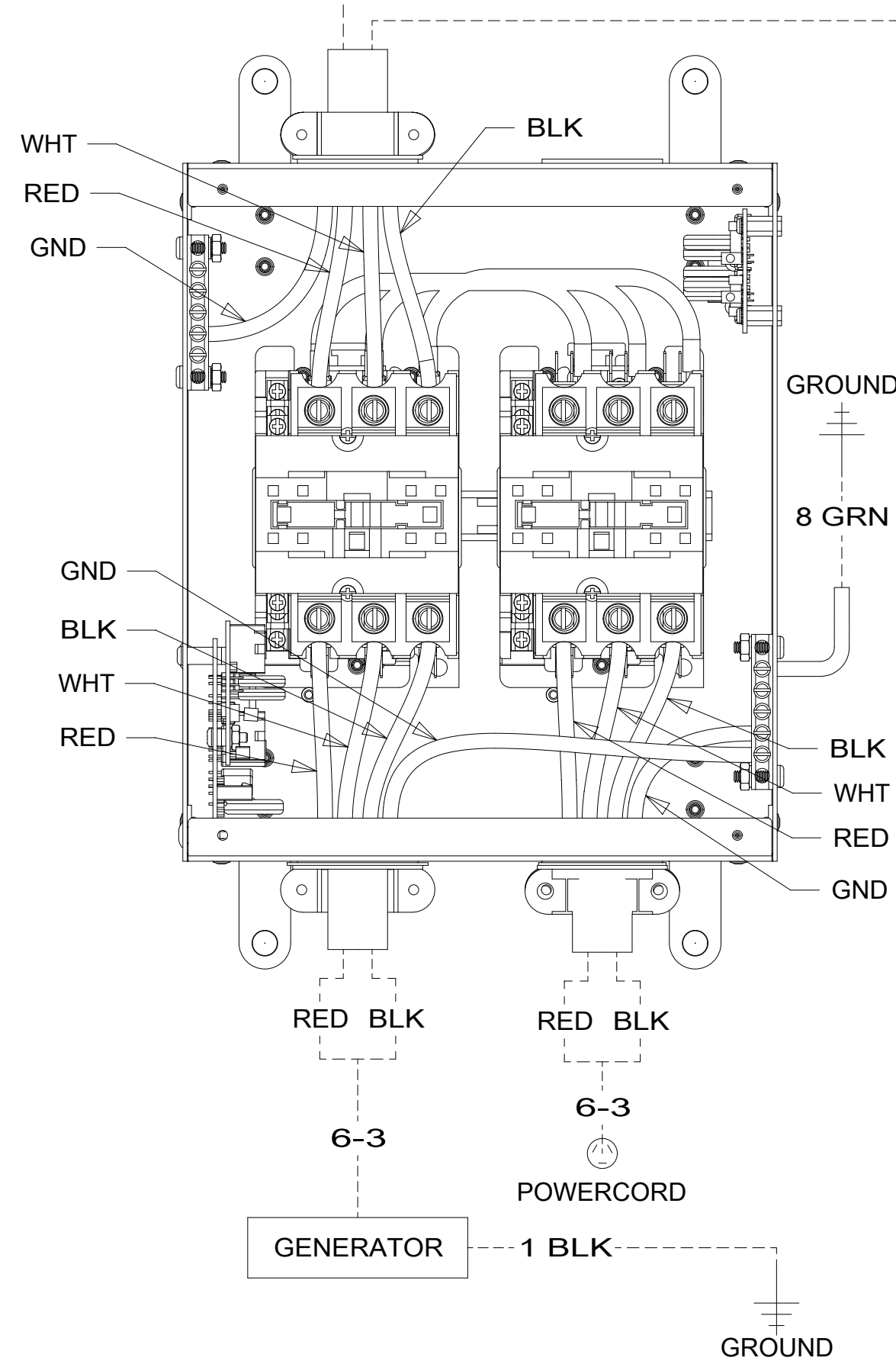
- 53K WTR HTR-10GAL/ELECTRIC/LPGAS
- 14C FIREPLACE-ELECTRIC
- 265 CODES/STANDARDS-CSA/CMVSS
- 1B1 CODES/STANDARDS USA

2 SEE DETAIL EB FOR CONNECTOR INSTALLATION.
1 SEE DETAIL EA FOR CONNECTOR INSTALLATION.

FOR ELECTRICAL TORQUE SPECIFICATIONS SEE DWG NO. 128783-01-000

FOR ELECTRICAL CALLOUTS SEE DWG NO. 121339-01-000

| | | |
|--------------------------------|-------------------------|-----|
| DESCRIPTION: | 1B1 265 | |
| WIRING INSTL-BODY, 110V | | |
| SHEET: | ITEM/PART NO: | REV |
| 5 OF 6 | 000045775 / 32106301000 | |



- NOTES:
- 4 REMOVE & DISCARD CONNECTOR TO CONNECT TO RCP WITHOUT 1DF
 - 3 WIRE ROUTED IN ROOF.
 - 2 WIRE ROUTED IN SIDEWALL.
 - 1 ALL OUTLETS DOWN STREAM AND INCLUDING THIS OUTLET ARE GROUND FAULT INTERRUPT PROTECTED.

- 1DF EXT TV ENTERTAINMENT CENTER
- 53K WTR HTR-10GAL/ELECTRIC/LPGAS
- 265 CODES/STANDARDS-CSA/CMVSS
- 1B1 CODES/STANDARDS USA

FOR ELECTRICAL TORQUE SPECIFICATIONS SEE DWG NO. 128783-01-000

FOR ELECTRICAL CALLOUTS SEE DWG NO. 121339-01-000

| | | |
|---|---------------------------------------|------|
| DESCRIPTION: WIRING INSTL-BODY, 110V | | |
| SHEET: 6 OF 6 | ITEM/PART NO: 000045775 / 32106301000 | REV: |
| 02-Apr-2018 | | |