

- 10 ROUTE STABILIZER WIRING WITH CHASSIS LOOM TO HITCH AREA.
- 9 SEE SHEET 3 FOR ADDITIONAL INFORMATION.
- 8 SEE WIRING INSTL-BODY, 12V FOR ADDITIONAL INFORMATION.
- 7 SEE ATS ASM FOR ADDITIONAL INFORMATION.
- 6 SEE RADIO/MONITOR INSTL FOR ADDITIONAL INFORMATION.
- 5 FUSE LOCATED UNDER DASH BY PARK BRAKE ASM.
- 4 FUSE LOCATED UNDER DASH BY STEERING COLUMN.
- 3 CUT LTGRN/RED WIRE FROM PARK BRAKE SWITCH AND RECONNECT TO CIRCUIT DY OF CHASSIS ASM AS SHOWN.

2. SECURE CONDUIT 41953, TAB AS REQUIRED, OVER ALL WIRES IN CONTACT WITH SHARP EDGES.
1. USE WIRE TIES 8343-04-000 AND 116673-01-000 APPROXIMATELY 600MM ON CENTER UNLESS OTHERWISE SPECIFIED.

NOTES:

- 401 INVERTER-DC/AC, 1000 WATT
- 965 SEAT PEDESTALS-SWIVEL/SLIDE
- 09A PREMIUM PACKAGE
- 64A JACKS-STABILIZING, ELECTRIC
- 283 MIRRORS-UPGRADE W/CAMERA
- 16Y FORD CHASSIS - 14,500#_GVWR
- 265 CODES/STANDARDS-CSA/CMVSS
- 1B1 CODES/STANDARDS USA

WINNEBAGO
COPYRIGHT 2016 WINNEBAGO INDUSTRIES, INC.

DSNR:	ALL DIMENSIONS ARE IN MILLIMETERS
DIFTR:	MATERIAL:
UNSPECIFIED TOLERANCES:	WEIGHT: (LBS)
WHOLE DIM (X) : 3	FIRST USED: 18 326A
ONE-PLACE (X.X) : 1.5	
TWO-PLACE (X.XX) : 0.50	
ANGLE : 1°	

REFER TO ES0018 FOR FASTENER TIGHTENING GUIDELINES

DESCRIPTION: **WIRING INSTL-CHASSIS**

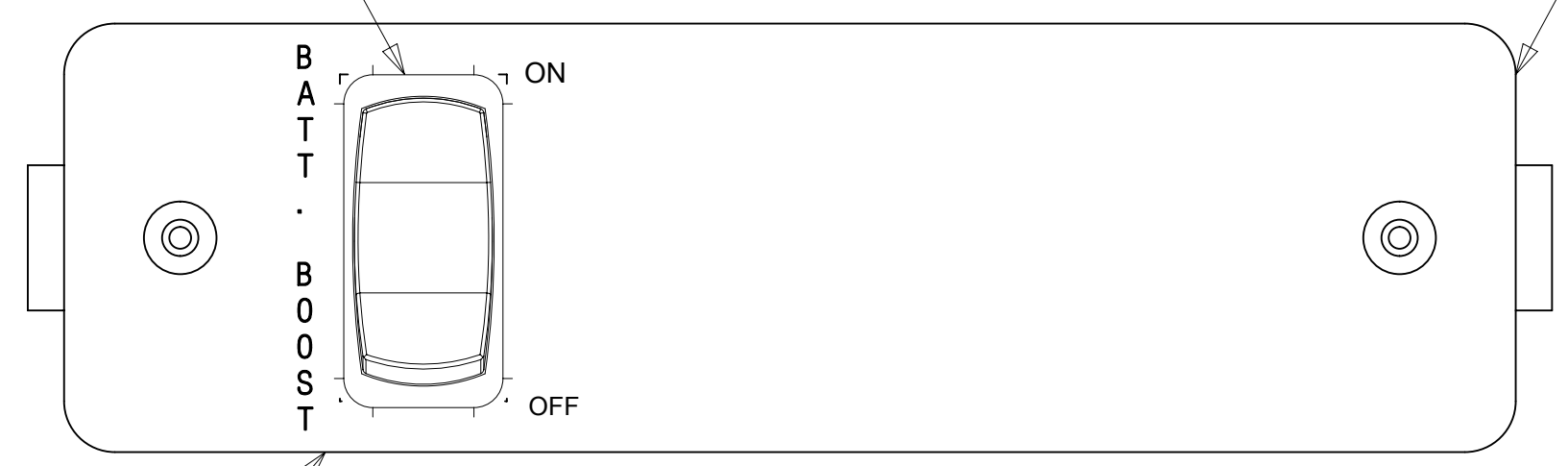
SHEET: 1 OF 3 ITEM/PART NO.: 000045562 / 32098101000 REF: 1

DATE: 21-Nov-2017

FOR ELECTRICAL TORQUE SPECIFICATIONS SEE DWG NO. 128783-01-000

FOR ELECTRICAL CALLOUTS SEE DWG NO. 121339-01-000

SWITCH
145638-04-CHT
(CIRCUITS LS,LR,KE)



LABEL
132954-15-CHT

VIEW BD

PLATE-SWITCH,MOUNTING
152419-03-CHT
PLATE-SWITCH
144363-16-CHT
SCREW
G11-06-08T (2)

CABLE ASM-INVERTER
CABLE ASM-INVERTER GND
CABLE ASM-INVERTER CASE GND
TO INVERTER

401

TO BATTERY DISCONNECT

RED AND GREEN
BATTERY CABLES
110V FLEX CORD
CROSS CHASSIS
IN THIS AREA

300 DROP
GROUNDS TO
CHASSIS RAIL

RELAY HSG
COAX (RED)
CIRCUITS: HR,PM,NM
2- 15 PIN HSGS
2,8,4 PIN HSGS

2000 DROP
2- 8 PIN HSGS TO
SLIDEOUT SWITCHES

150 DROP
MM,MS
TO SIDEMARKER

WIRE ASM-FUEL
TANK EXTENSION
172924-01-000

STABILIZER WIRING
2-8 PIN HSG
1-RELAY HSG
1-4 PIN HSG

64A

CAMERA CABLE
JD,ND
4- 2 PIN HSGS
1- 3 PIN HSG
SLIDEOUT CONTROL WIRING
SLIDEOUT CABLES THRU FLOOR

2 PIN HSG
4 PIN HSG
TO STABILIZERS

64A

500 DROP
TO TRAILER
PLUG ASM

GROUND MS, RRJ
TO CHASSIS RAIL

400 DROP
8 PIN HSG
TO BACKWALL

150 DROP
MM,MS
TO SIDEMARKER

PLUGS TO
FORD WIRE ASM (3)

COAX (RED)
WB,UK,JC,NC,
WX,YP,WR,JH,
JM,XP,XR,XS

7 6

SLIDEOUT MOTOR
(GRN)

GROUND TO ATS

900 DROP
8 PIN HSG
TO GENERATOR

CABLE ASM-
GENERATOR
GND (BLK)
NUT
D39-05-00B

CABLE ASM-GENERATOR (GRN)
(TO GENERATOR)

SLIDEOUT MOTOR
(YEL)

12V
JD,ND
110V (BRN)
TO WIRE CARRIER

ISOLATED STUD
CABLE ASM-
STARTER EXT
J TO
LOAD CENTER

CABLE ASM-
STARTER (RED)
(TO STARTER
SOLENOID)

STABILIZERS
INDICATOR LAMP
DETAILS CE & CF

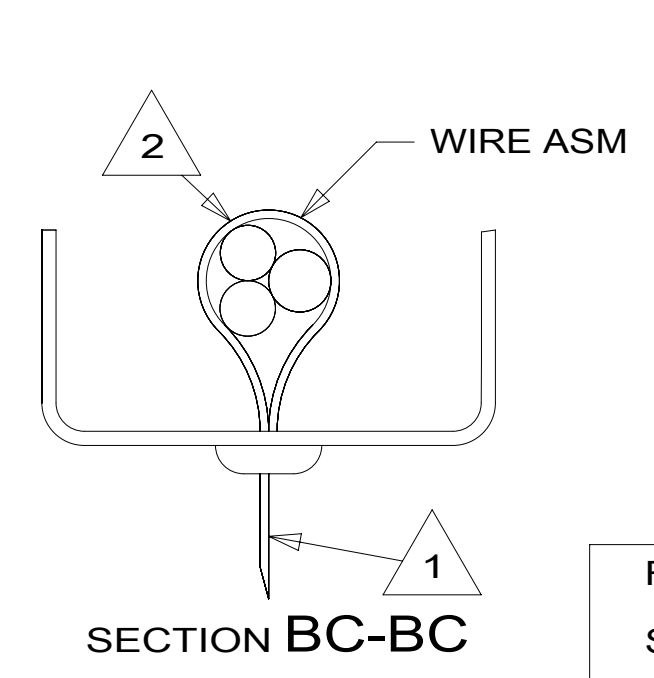
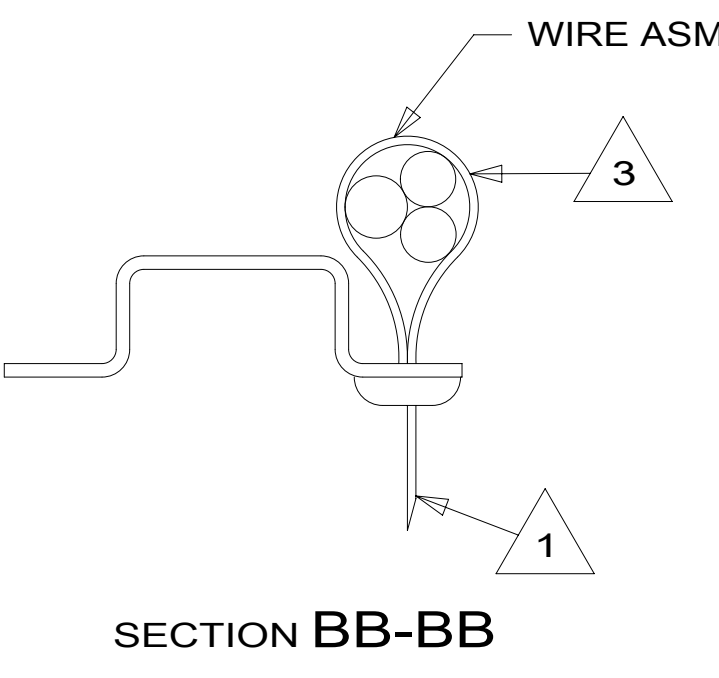
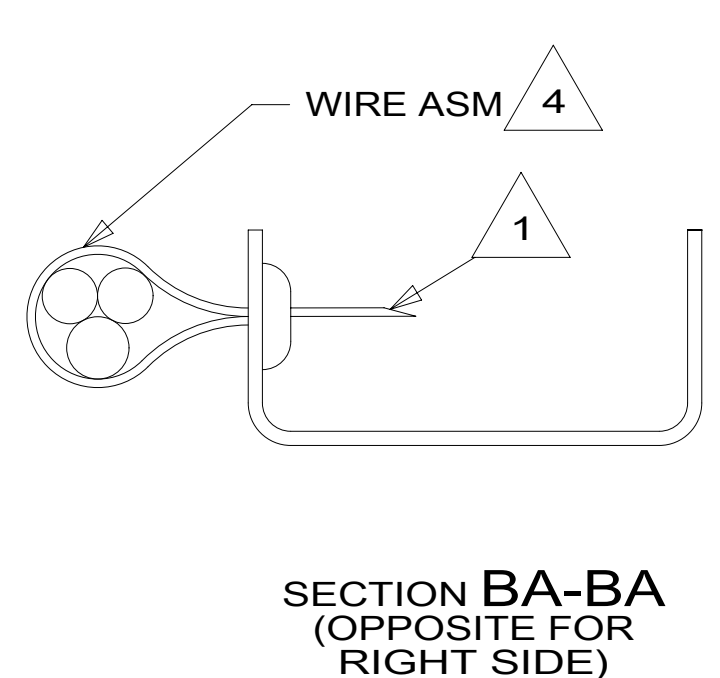
STABILIZER ALARM
DETAILS CA

DATUM

1473

FRONT
AXLE

- NOTES:
- 7 SEE WIRING INSTL-BODY, 12V FOR ADDITIONAL INFORMATION.
 - 6 WIRING PASSES THROUGH FLOOR IN THIS AREA.
 - 5 SEE BATTERY INSTL FOR ADDITIONAL INFORMATION.
 - 4 WIRES TO BE TIED TO CROSS MEMBER USING EXISTING HOLES.
 - 3 WIRES TO BE TIED TO TOP OF RAIL USING EXISTING HOLES.
 - 2 WIRES TO BE TIED TO INSIDE OF RAIL USING EXISTING HOLES.
 - 1 CUT OFF EXCESS END OF WIRE TIE.

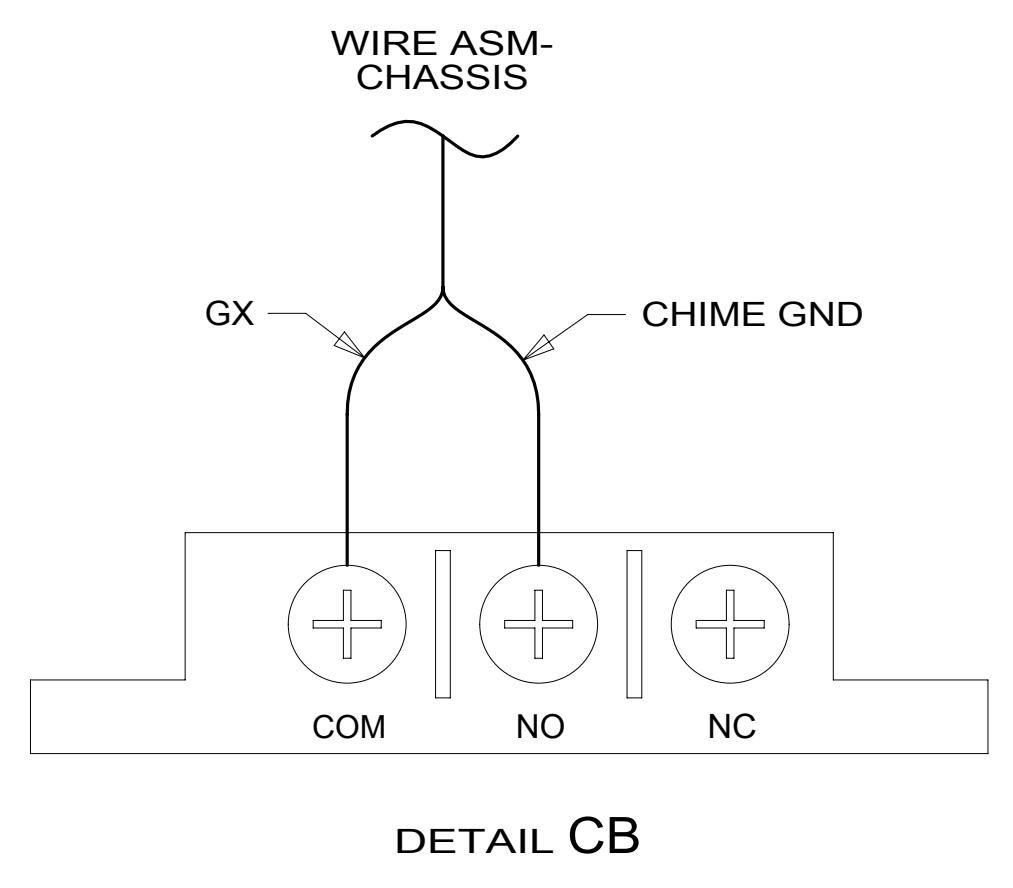
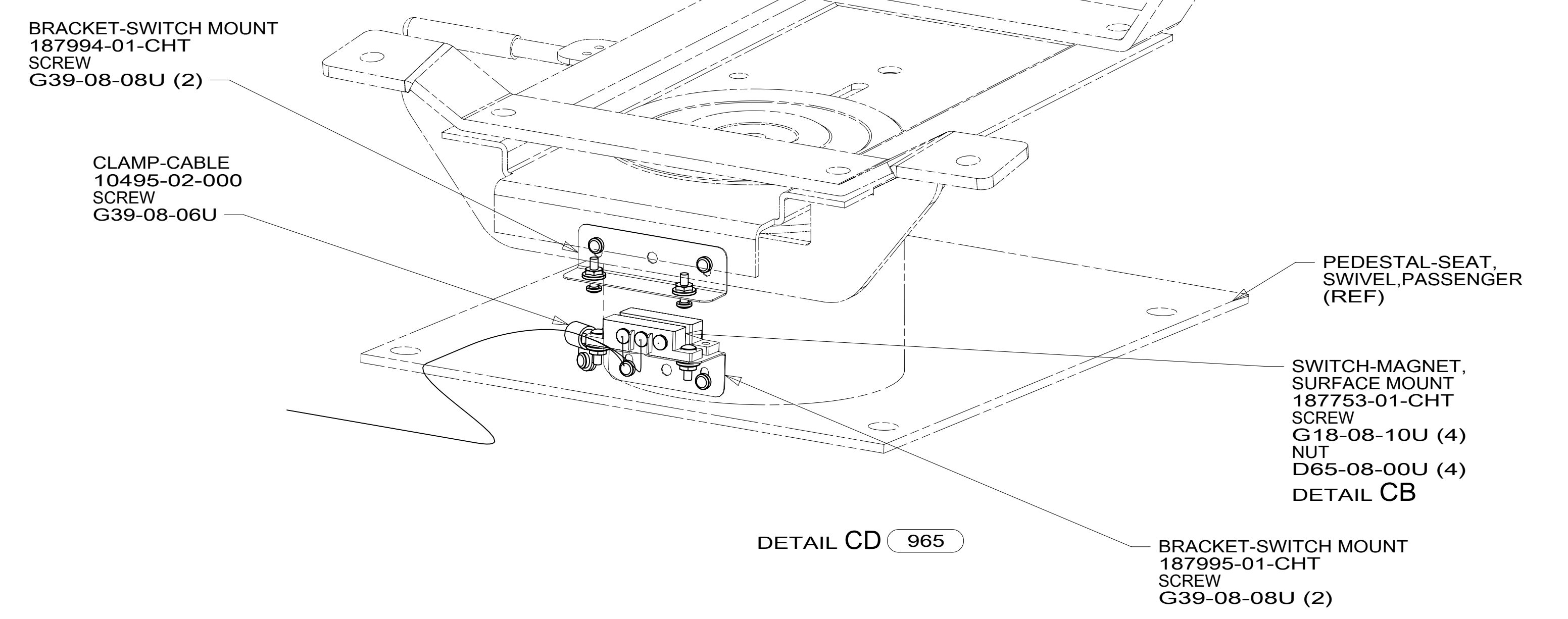
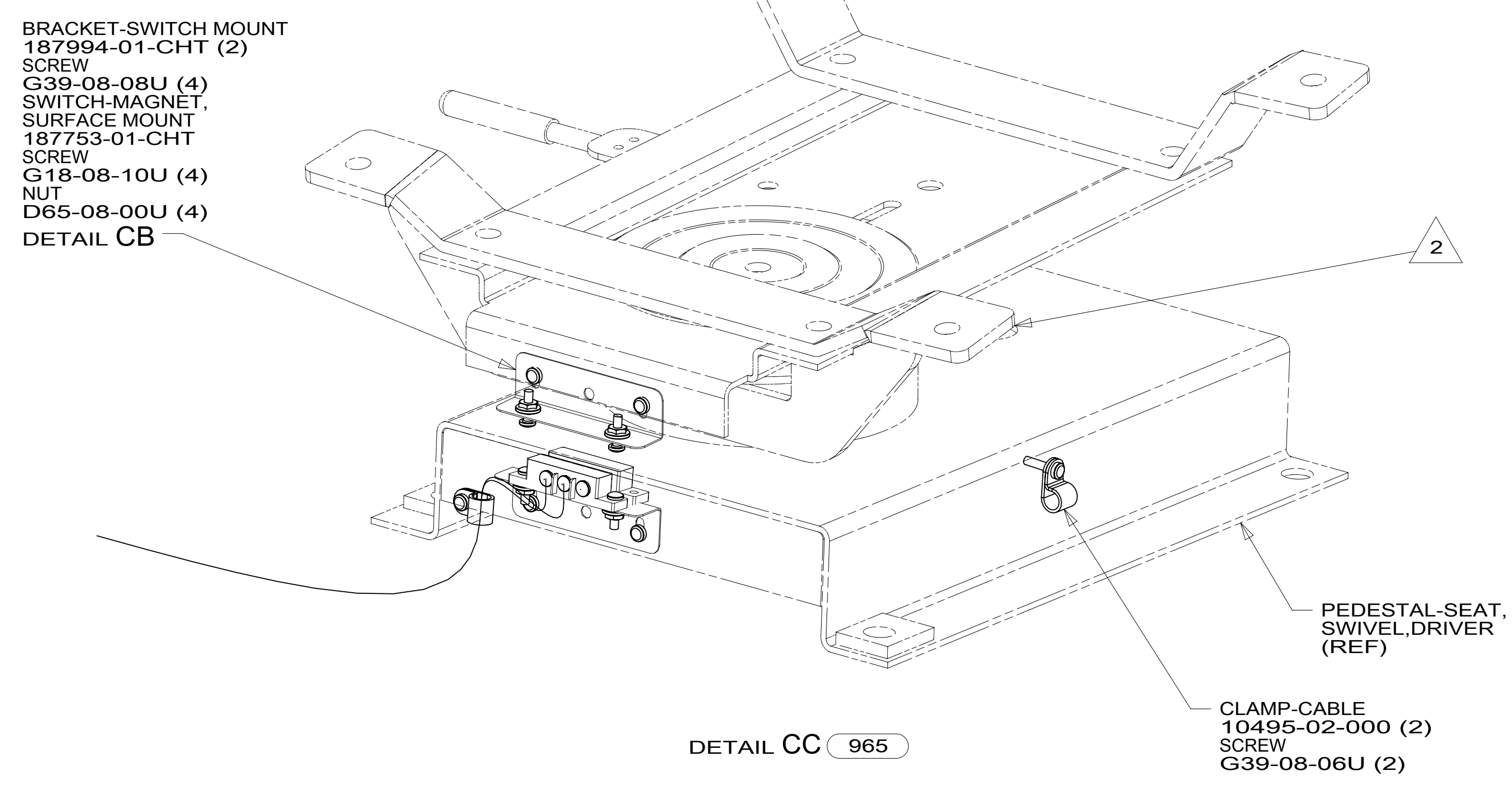
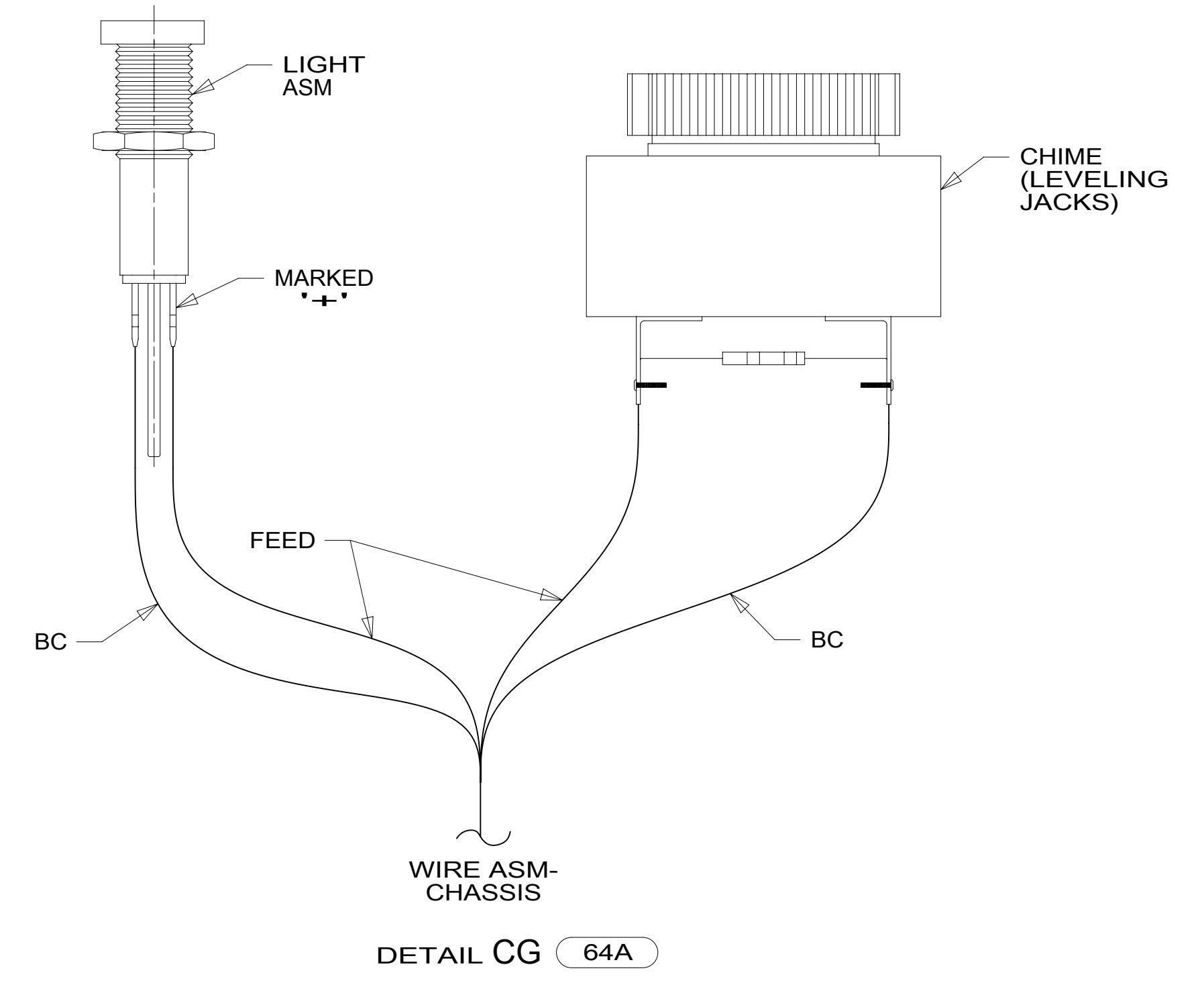
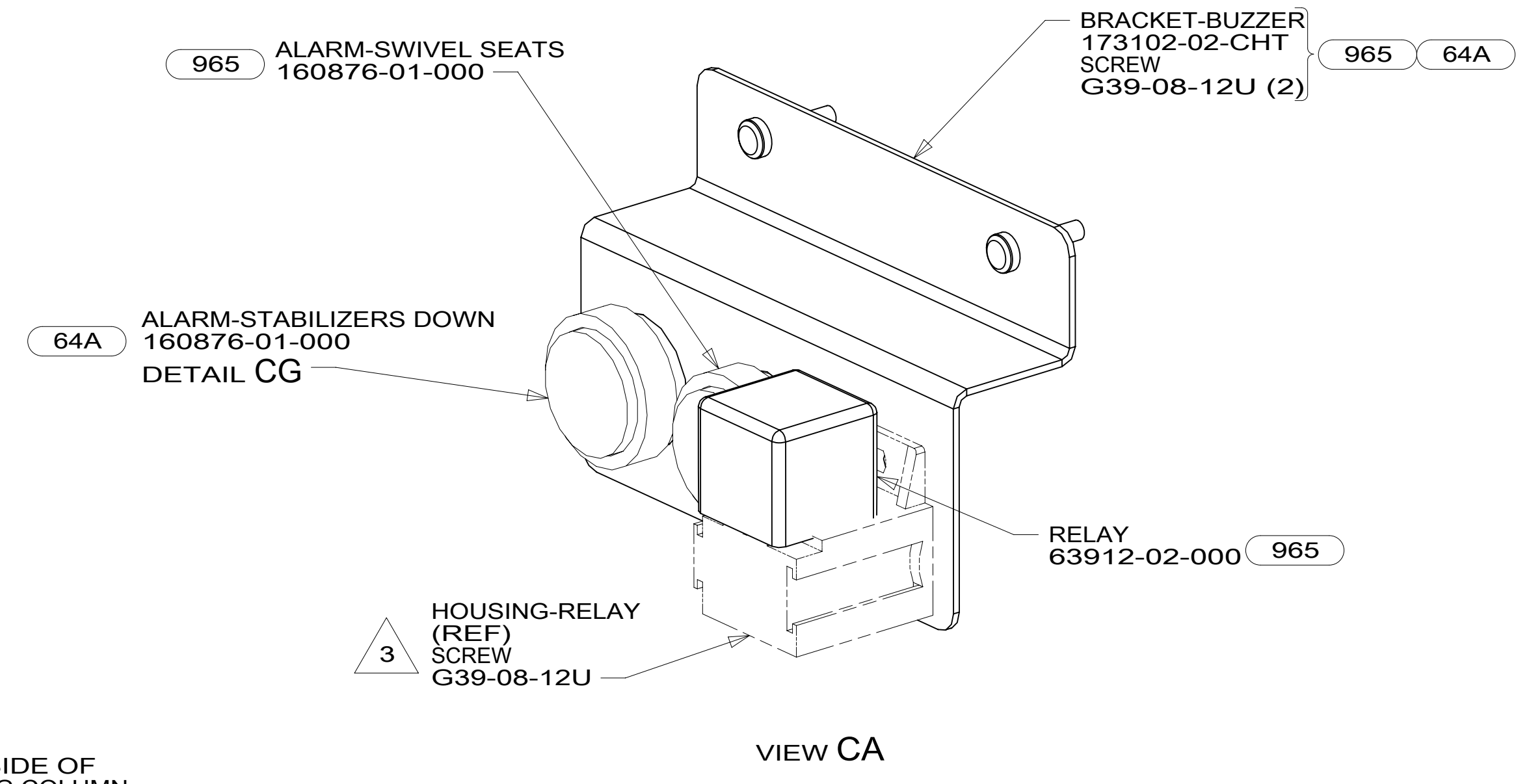
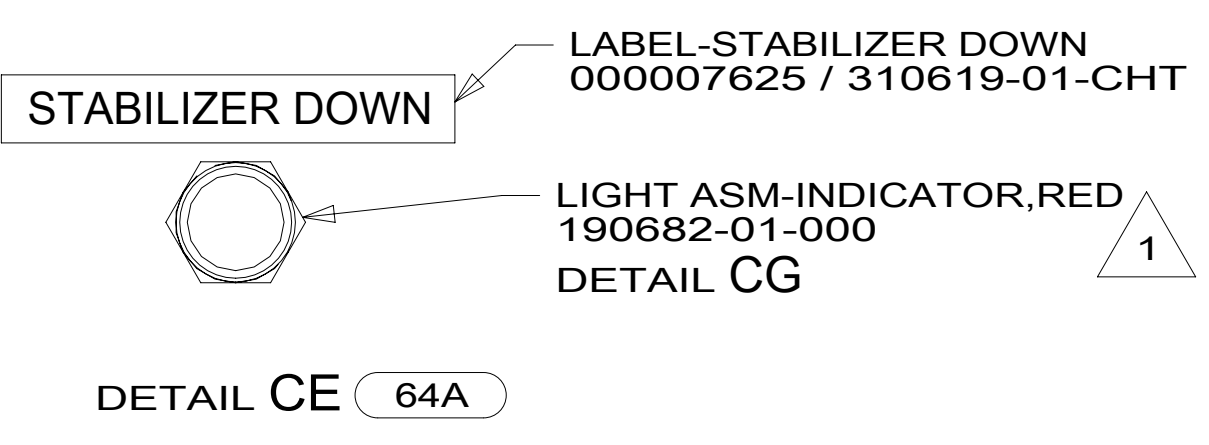


FOR ELECTRICAL
TORQUE
SPECIFICATIONS
SEE DWG NO.
128783-01-000

FOR
ELECTRICAL
CALLOUTS
SEE DWG NO.
121339-01-000

- 401 INVERTER-DC/AC, 1000 WATT
- 64A JACKS-STABILIZING, ELECTRIC
- 16Y FORD CHASSIS - 14,500#_GVWR
- 265 CODES/STANDARDS-CSA/CMVSS
- 1B1 CODES/STANDARDS USA

DESCRIPTION:	1B1 265 16Y	
WIRING INSTL-CHASSIS		
SHEET:	ITEM/PART NO:	REV
2 OF 3	000045562 / 32098101000	



- NOTES:
- 3 PART OF WIRE ASM-SWIVEL SEATS.
 - 2 COVER FORD WIRING WITH CONVOLUTE 41953-01-000 (150 MM) TO PROTECT WIRES FROM SHARP EDGES WHERE THEY PASS THROUGH SEAT PEDESTAL. SECURE BOTH ENDS TO WIRES WITH TAPE 8363-01-000.
 - 1 PART OF WIRE ASM-CHASSIS.

FOR ELECTRICAL TORQUE SPECIFICATIONS SEE DWG NO. 128783-01-000

FOR ELECTRICAL CALLOUTS SEE DWG NO. 121339-01-000

- 64A JACKS-STABILIZING, ELECTRIC
- 965 SEAT PEDESTALS-SWIVEL/SLIDE
- 16Y FORD CHASSIS - 14,500#_GVWR
- 265 CODES/STANDARDS-CSA/CMVSS
- 1B1 CODES/STANDARDS USA

DESCRIPTION:	1B1 265 16Y	
WIRING INSTL-CHASSIS		
SHEET:	ITEM/PART NO:	REV
3 OF 3	000045562 / 32098101000	