

8 7 6 5 4 3 2 1

D

D

C

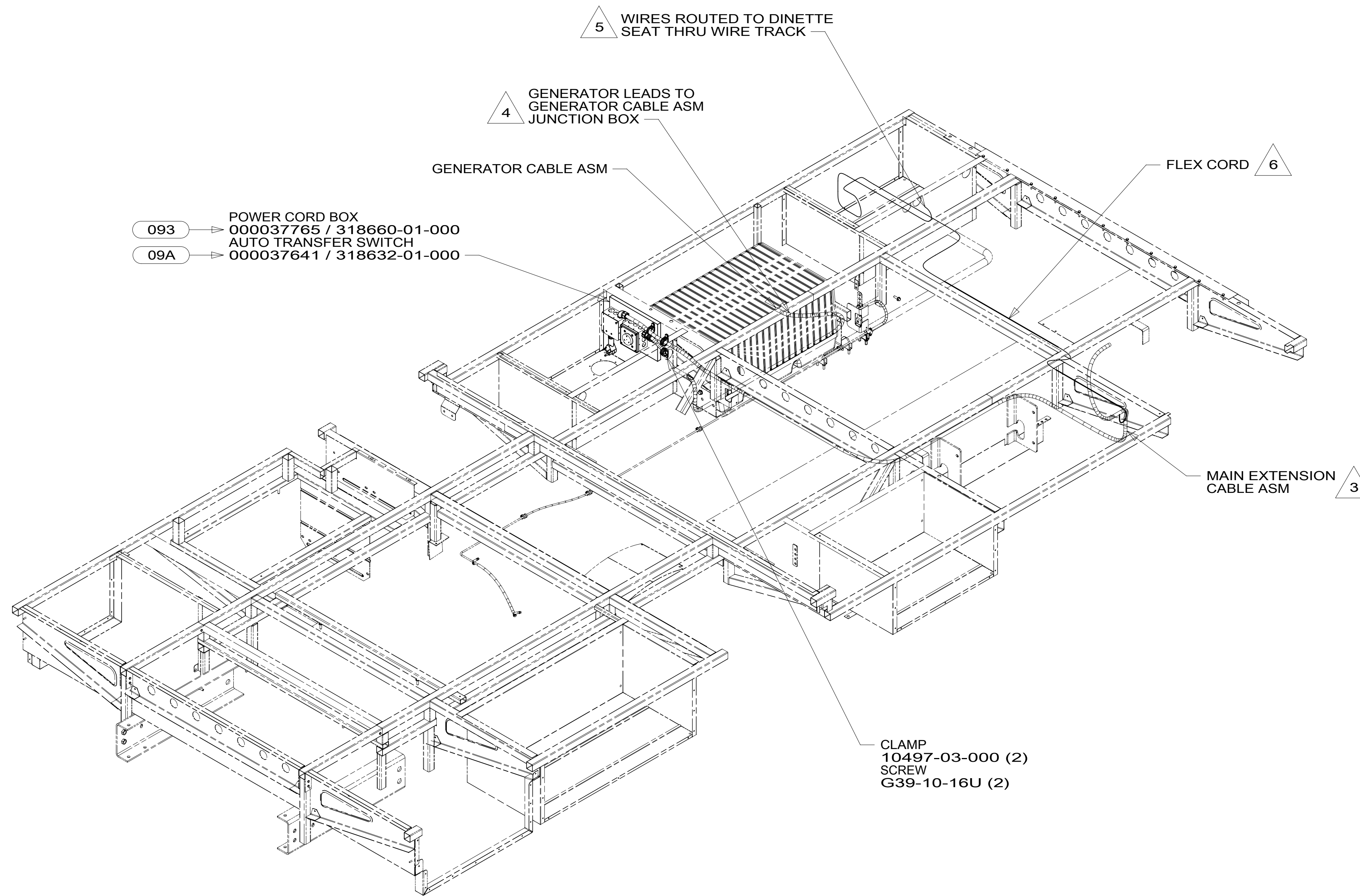
C

B

B

A

A



- 5 WIRE IS PART OF WIRE ASM-CHASSIS.
- 4 SEE GENERATOR INSTL FOR ADDITIONAL INFORMATION.
- 3 ROUTE WIRE THRU FLOOR.

- 2. ALL 110V WIRE TO BE CLAMPED WITH CLAMP 10495 OR 10497 OR WIRE TIE 8343 OR 108046 AND SCREW G67-XX-XXX OR G56-XX-XXX AS APPROPRIATE FOR INSTALLATION.
- 1. AT MINIMUM ALL WIRES TO BE SUPPORTED AND SECURED PER CODE REQUIREMENTS. USE CLAMP 10495 OR 10497 OR WIRE TIE 8343 OR 108046 AND SCREW G67-XX-XXX OR G56-XX-XXX AS APPROPRIATE FOR INSTALLATION.

NOTES:

- 093 PREMIUM PACKAGE WITHOUT
- 09A PREMIUM PACKAGE
- 265 CODES/STANDARDS-CSA/CMVSS
- 1B1 CODES/STANDARDS USA
- 1B1 265



|                         |        |                                   |             |
|-------------------------|--------|-----------------------------------|-------------|
| DSNR:                   |        | ALL DIMENSIONS ARE IN MILLIMETERS |             |
| DFFR:                   |        | MATERIAL:                         |             |
| UNSPECIFIED TOLERANCES: |        | WEIGHT: (LBS)                     | FIRST USED: |
| WHOLE DIM (X)           | : 3    |                                   | 18 326A     |
| ONE-PLACE (X.X)         | : 1.5  |                                   |             |
| TWO-PLACE (X.XX)        | : 0.50 |                                   |             |
| ANGLE                   | : 1°   |                                   |             |

REFER TO ES0018 FOR FASTENER TIGHTENING GUIDELINES

**WIRING INSTL-BODY, 110V**

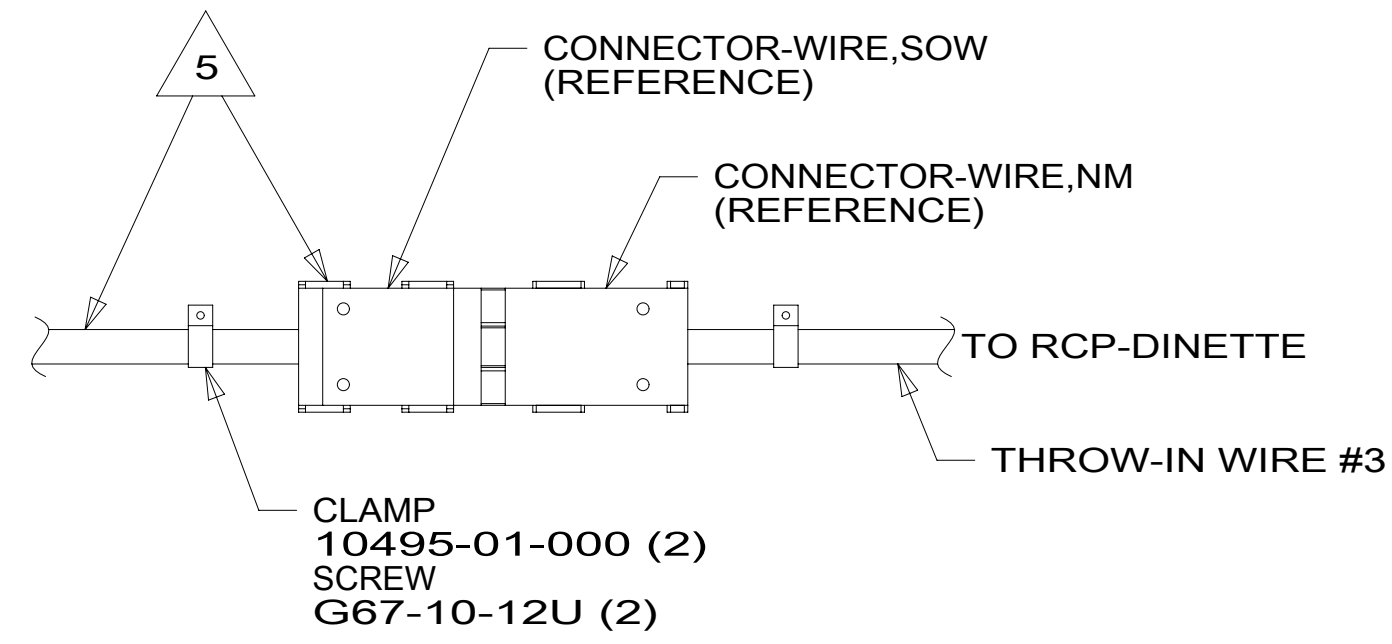
|        |                         |      |
|--------|-------------------------|------|
| SHEET: | ITEM/PART NO.:          | REV: |
| 1 OF 6 | 000045560 / 32097901000 |      |

FOR ELECTRICAL TORQUE SPECIFICATIONS SEE DWG NO. 128783-01-000

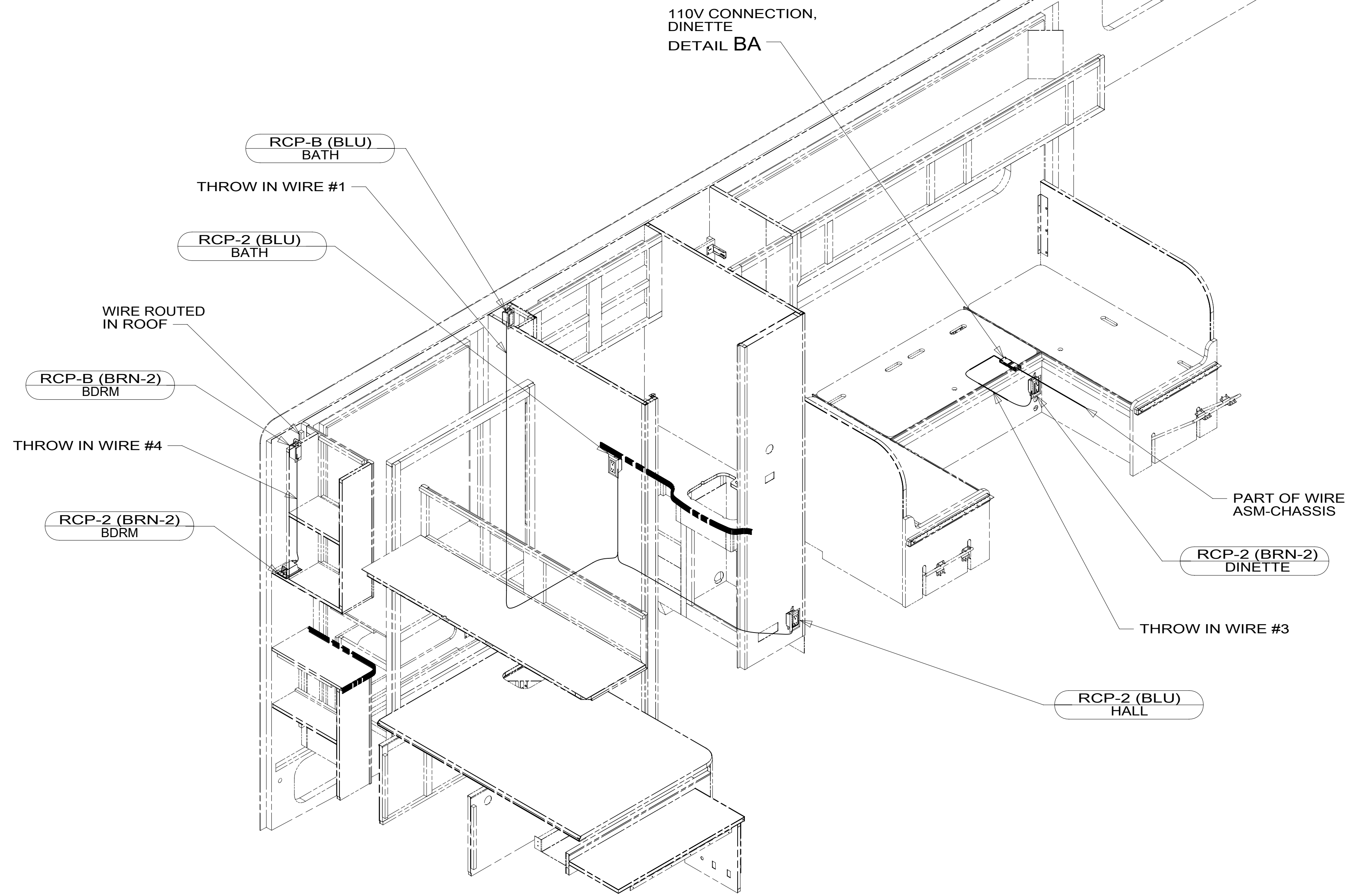
FOR ELECTRICAL CALLOUTS SEE DWG NO. 121339-01-000

8 7 6 5 4 3 2 1





DETAIL BA



- 5 CORD & CONNECTOR ARE PART OF WIRE ASM-CHASSIS.
4. FOR MORE INFORMATION SEE WIRING DIAGRAM-BODY, 110V.
3. ALL GROUND WIRE TO BE COVERED WITH TUBING 8041-02-000.
2. ALL 110V WIRE TO BE CLAMPED WITH CLAMP 10497-05-000 WITHIN 200MM OF OUTLET BOXES, USE SCREW G67-10-12U.
1. AT MINIMUM ALL WIRES TO BE SUPPORTED AND SECURED PER CODE REQUIREMENTS. USE CLAMP 10495 OR 10497 OR WIRE TIE 8343 OR 108046 AND SCREW G67-XX-XXX OR G56-XX-XXX AS APPROPRIATE FOR INSTALLATION.

NOTES:

265 CODES/STANDARDS-CSA/CMVSS

1B1 CODES/STANDARDS USA

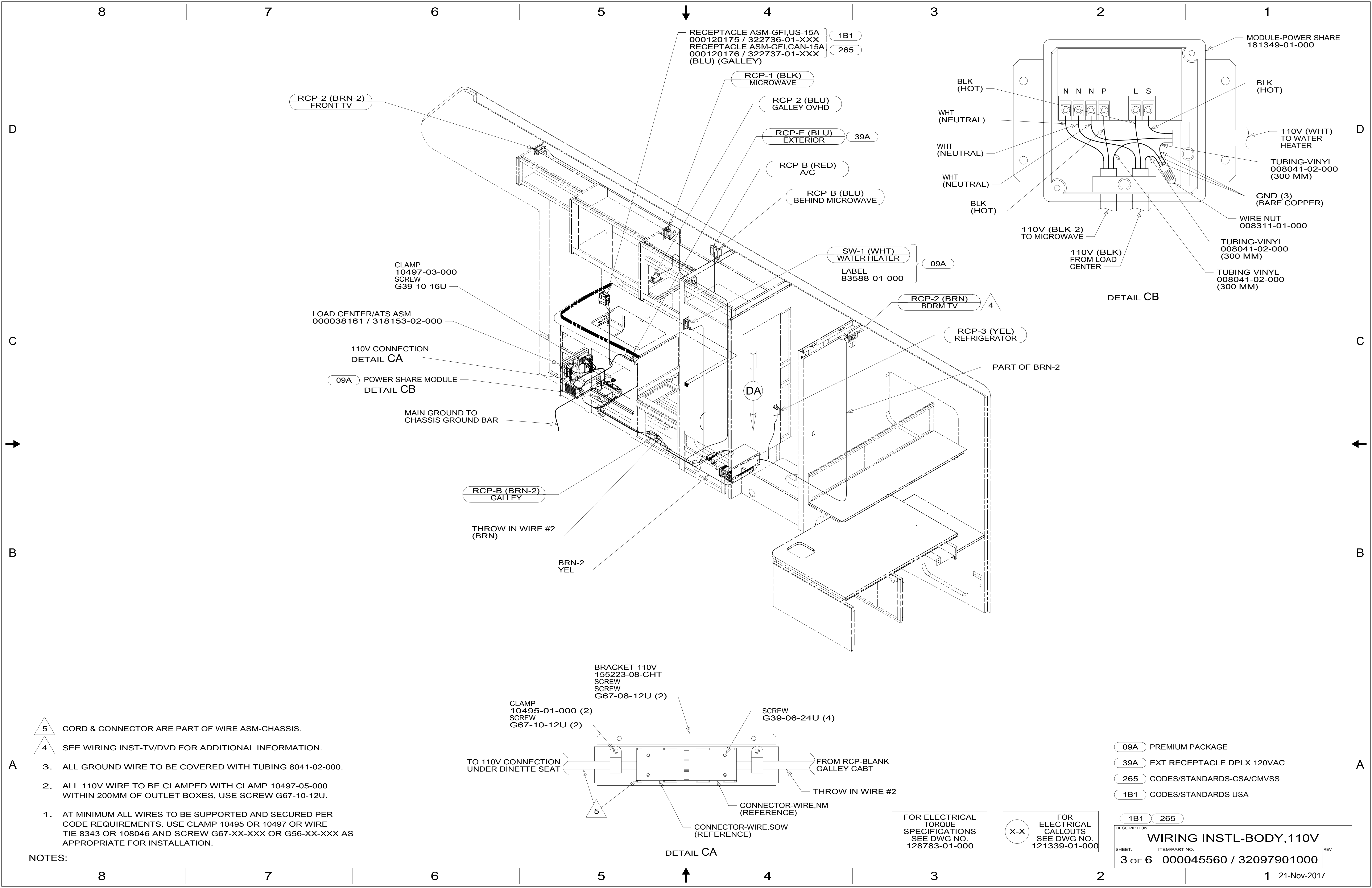
1B1 265

FOR ELECTRICAL TORQUE SPECIFICATIONS SEE DWG NO. 128783-01-000

FOR ELECTRICAL CALLOUTS SEE DWG NO. 121339-01-000

DESCRIPTION:  
**WIRING INSTL-BODY, 110V**

SHEET: 2 OF 6 ITEM/PART NO: 000045560 / 32097901000 REV



RECEPTACLE ASM-GFI,US-15A  
000120175 / 322736-01-XXX } 1B1  
RECEPTACLE ASM-GFI,CAN-15A } 265  
000120176 / 322737-01-XXX  
(BLU) (GALLEY)

RCP-2 (BRN-2)  
FRONT TV

RCP-1 (BLK)  
MICROWAVE

RCP-2 (BLU)  
GALLEY OVHD

RCP-E (BLU)  
EXTERIOR } 39A

RCP-B (RED)  
A/C

RCP-B (BLU)  
BEHIND MICROWAVE

SW-1 (WHT)  
WATER HEATER } 09A  
LABEL  
83588-01-000

RCP-2 (BRN)  
BDRM TV } 4

RCP-3 (YEL)  
REFRIGERATOR

CLAMP  
10497-03-000  
SCREW  
G39-10-16U

LOAD CENTER/ATS ASM  
000038161 / 318153-02-000

110V CONNECTION  
DETAIL CA

09A POWER SHARE MODULE  
DETAIL CB

MAIN GROUND TO  
CHASSIS GROUND BAR

RCP-B (BRN-2)  
GALLEY

THROW IN WIRE #2  
(BRN)

BRN-2  
YEL

BLK  
(HOT)

WHT  
(NEUTRAL)

WHT  
(NEUTRAL)

WHT  
(NEUTRAL)

BLK  
(HOT)

110V (BLK-2)  
TO MICROWAVE

110V (BLK)  
FROM LOAD  
CENTER

DETAIL CB

PART OF BRN-2

MODULE-POWER SHARE  
181349-01-000

BLK  
(HOT)

110V (WHT)  
TO WATER  
HEATER

TUBING-VINYL  
008041-02-000  
(300 MM)

GND (3)  
(BARE COPPER)

WIRE NUT  
008311-01-000

TUBING-VINYL  
008041-02-000  
(300 MM)

TUBING-VINYL  
008041-02-000  
(300 MM)

BRACKET-110V  
155223-08-CHT  
SCREW  
SCREW  
G67-08-12U (2)

CLAMP  
10495-01-000 (2)  
SCREW  
G67-10-12U (2)

SCREW  
G39-06-24U (4)

TO 110V CONNECTION  
UNDER DINETTE SEAT

FROM RCP-BLANK  
GALLEY CABT

THROW IN WIRE #2

CONNECTOR-WIRE,NM  
(REFERENCE)

CONNECTOR-WIRE,SOW  
(REFERENCE)

DETAIL CA

- NOTES:
1. AT MINIMUM ALL WIRES TO BE SUPPORTED AND SECURED PER CODE REQUIREMENTS. USE CLAMP 10495 OR 10497 OR WIRE TIE 8343 OR 108046 AND SCREW G67-XX-XXX OR G56-XX-XXX AS APPROPRIATE FOR INSTALLATION.
  2. ALL 110V WIRE TO BE CLAMPED WITH CLAMP 10497-05-000 WITHIN 200MM OF OUTLET BOXES, USE SCREW G67-10-12U.
  3. ALL GROUND WIRE TO BE COVERED WITH TUBING 8041-02-000.

FOR ELECTRICAL  
TORQUE  
SPECIFICATIONS  
SEE DWG NO.  
128783-01-000

FOR ELECTRICAL  
CALLOUTS  
SEE DWG NO.  
121339-01-000

- 09A PREMIUM PACKAGE
- 39A EXT RECEPTACLE DPLX 120VAC
- 265 CODES/STANDARDS-CSA/CMVSS
- 1B1 CODES/STANDARDS USA

|                                |                         |     |
|--------------------------------|-------------------------|-----|
| DESCRIPTION:                   | 1B1 265                 |     |
| <b>WIRING INSTL-BODY, 110V</b> |                         |     |
| SHEET:                         | ITEM/PART NO:           | REV |
| 3 OF 6                         | 000045560 / 32097901000 |     |

8 7 6 5 4 3 2 1

D

D

C

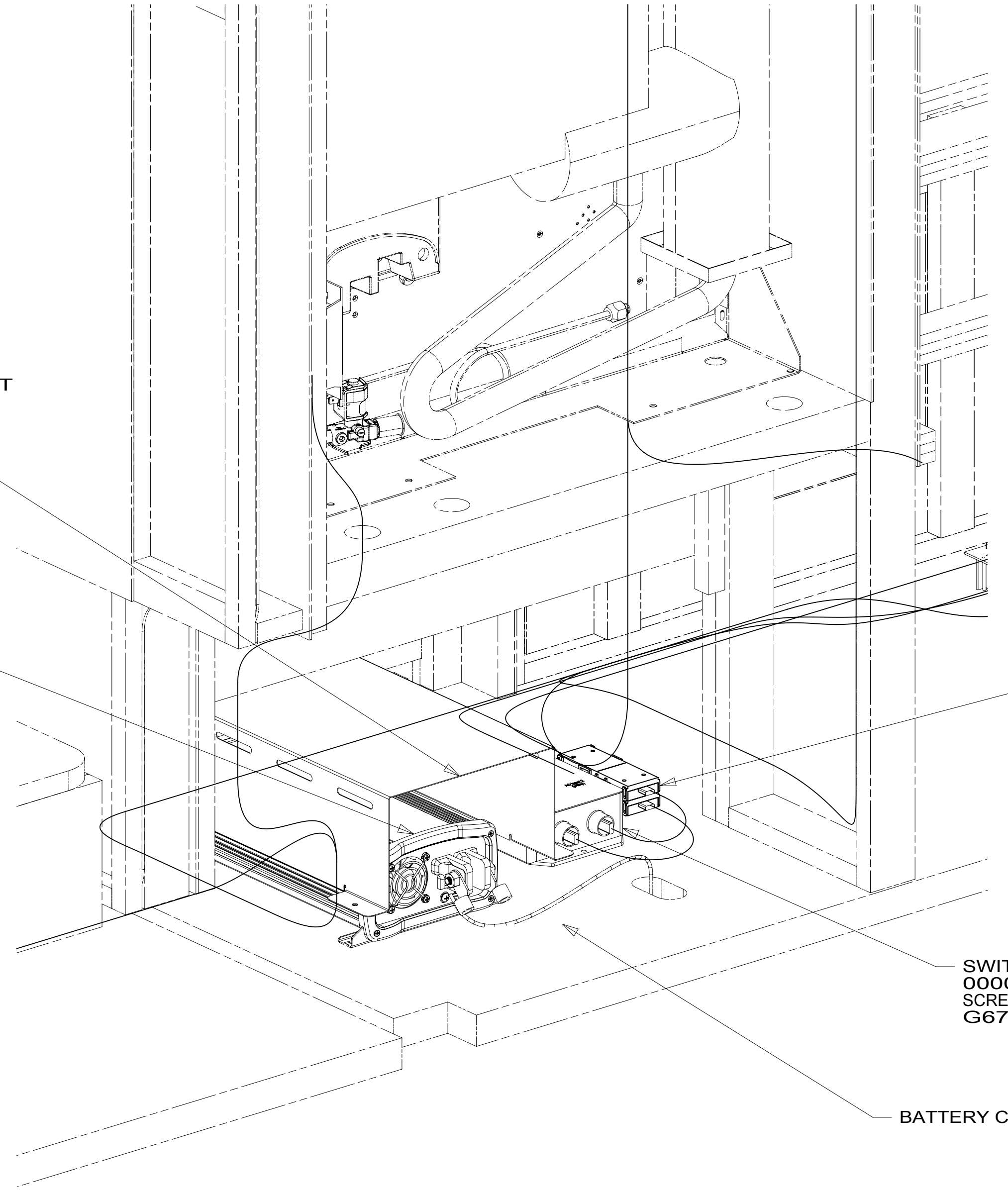
C

B

B

A

A



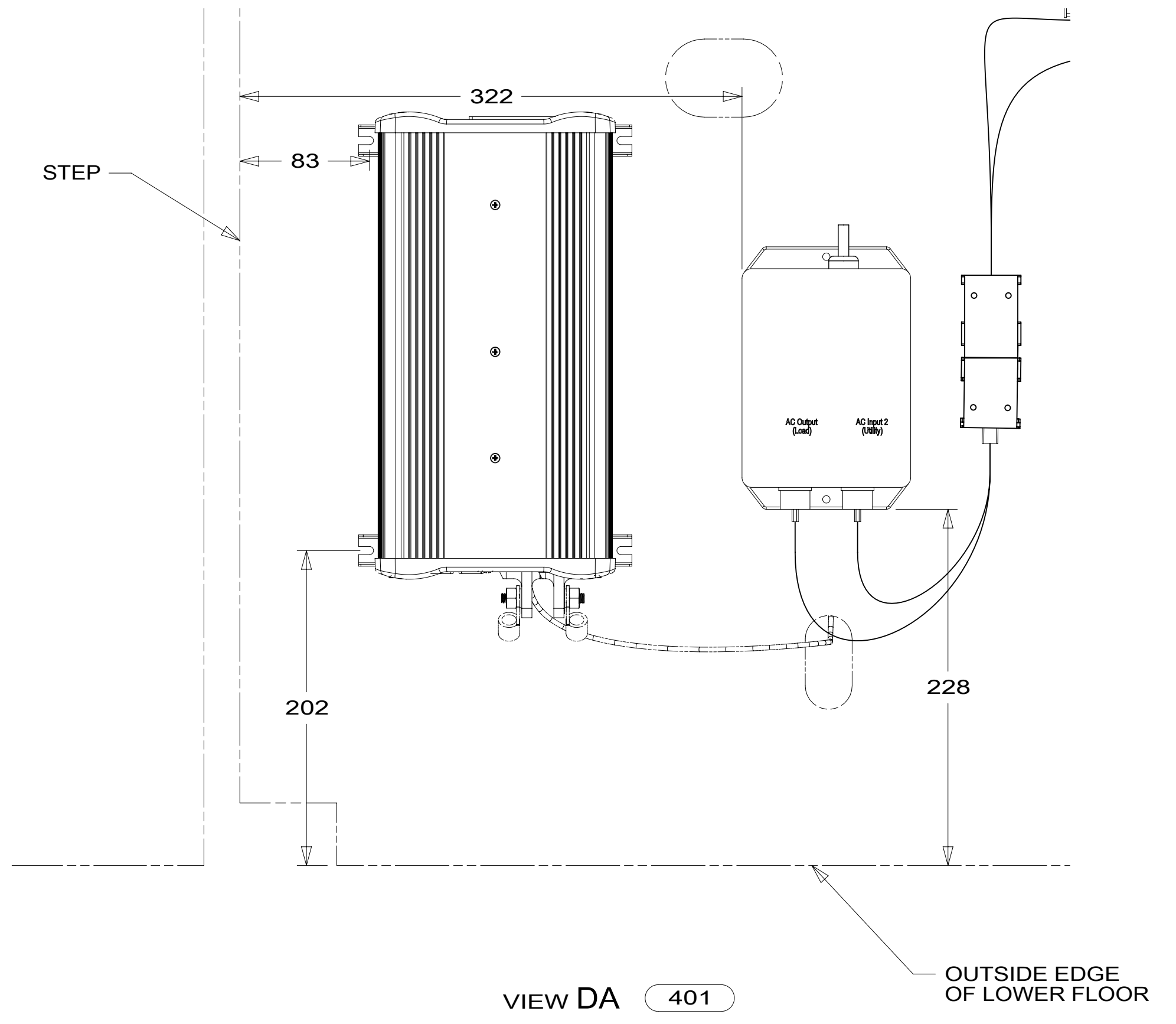
COVER-FORMED,INVERTER  
000046434 / 321281-01-CHT  
SCREW  
G67-10-12U (4)

INVERTER-1000W, NO TRANSFER  
000033749 / 318692-01-000  
SCREW  
G67-10-12U (4)

110V CONNECTORS (REF) 8

SWITCH-TRANSFER,INVERTER, 15 AMP  
000033766 / 318693-01-000  
SCREW  
G67-10-12U (2) 6

BATTERY CABLES 7



VIEW DA 401

OUTSIDE EDGE OF LOWER FLOOR

- NOTES:**
- 8 CONNECT INVERTER INPUT TO BRN WIRE, INVERTER OUTPUT TO BRN-2 WIRE.
  - 7 CONNECT ORG CABLE TO RED (+) TERMINAL, BLK CABLE TO WHITE (-) TERMINAL, GROUND TO GROUND LUG.
  - 6 PLUG TRANSFER SWITCH INTO 110V OUTLET IN INVERTER FRONT.
  - 5 ROUTE WIRE THRU FLOOR.
  - 4. FOR MORE INFORMATION SEE WIRING DIAGRAM-BODY,110V.
  - 3. ALL GROUND WIRE TO BE COVERED WITH TUBING 8041-02-000.
  - 2. ALL 110V WIRE TO BE CLAMPED WITH CLAMP 10497-05-000 WITHIN 200MM OF OUTLET BOXES, USE SCREW G67-10-12U.
  - 1. AT MINIMUM ALL WIRES TO BE SUPPORTED AND SECURED PER CODE REQUIREMENTS. USE CLAMP 10495 OR 10497 OR WIRE TIE 8343 OR 108046 AND SCREW G67-XX-XXX OR G56-XX-XXX AS APPROPRIATE FOR INSTALLATION.

FOR ELECTRICAL TORQUE SPECIFICATIONS SEE DWG NO. 128783-01-000

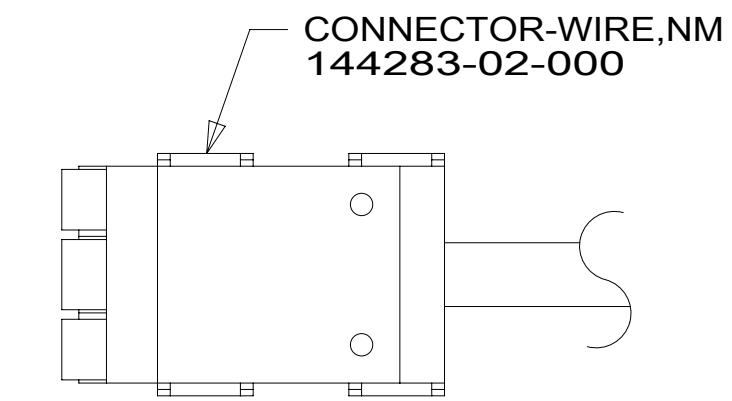
FOR ELECTRICAL CALLOUTS SEE DWG NO. 121339-01-000

- 401 INVERTER-DC/AC, 1000 WATT
- 265 CODES/STANDARDS-CSA/CMVSS
- 1B1 CODES/STANDARDS USA

|              |                         |                               |  |
|--------------|-------------------------|-------------------------------|--|
| DESCRIPTION: |                         | <b>WIRING INSTL-BODY,110V</b> |  |
| SHEET:       | ITEM/PART NO.:          | REV                           |  |
| 4 OF 6       | 000045560 / 32097901000 |                               |  |

8 7 6 5 4 3 2 1 21-Nov-2017

|                  |     |               |     |
|------------------|-----|---------------|-----|
| RED              | 1B1 | 136135-07-052 |     |
|                  | 265 | 136136-07-052 |     |
| YEL              | 1B1 | 136131-05-033 |     |
|                  | 265 | 136134-05-033 |     |
| BLK              | 1B1 | 136135-06-046 | 093 |
|                  | 265 | 136136-06-046 | 093 |
| BLK              | 1B1 | 136135-06-012 | 09A |
|                  | 265 | 136136-06-012 | 09A |
| BLK-2            | 1B1 | 136135-06-048 | 09A |
|                  | 265 | 136136-06-048 | 09A |
| BRN              | 1B1 | 136131-03-026 | 4   |
|                  | 265 | 136134-03-026 | 4   |
| BRN-2            | 1B1 | 136131-03-058 | 4   |
|                  | 265 | 136134-03-058 | 4   |
| BLU              | 1B1 | 136131-02-086 |     |
|                  | 265 | 136134-02-086 |     |
| WHT              | 1B1 | 136135-09-056 | 09A |
|                  | 265 | 136136-09-056 | 09A |
| THROW IN WIRE #1 | 1B1 | 136131-02-053 |     |
|                  | 265 | 136134-02-053 |     |
| THROW IN WIRE #2 | 1B1 | 136131-03-070 | 4   |
|                  | 265 | 136134-03-070 | 4   |
| THROW IN WIRE #3 | 1B1 | 136131-03-013 | 4   |
|                  | 265 | 136134-03-013 | 4   |
| THROW IN WIRE #4 | 1B1 | 136131-03-010 |     |
|                  | 265 | 136134-03-010 |     |
| MAIN             | 1B1 | 164957-07-044 | 5   |
|                  | 265 | 164957-08-044 | 5   |
| GROUND MAIN      |     | 136145-06-017 |     |



DETAIL EA

5 WIRE PREP TO INSTALL ON POWER CORD BOX ASM OR AUTO TRANSFER SWITCH ASM. LOAD CENTER END WILL BE INSTALLED ON LINE.

4 SEE DETAIL EA FOR CONNECTOR INSTALLATION.

3. SEE WIRING INSTL-BODY, 12V FOR ADDITIONAL INFORMATION.

2. SECURE WIRES TO BACKSIDE OF LOAD CENTER WITH WIRE TIE 116673-01-000.

1. ALL GROUND WIRES TO BE COVERED WITH TUBING 8041-02-000.

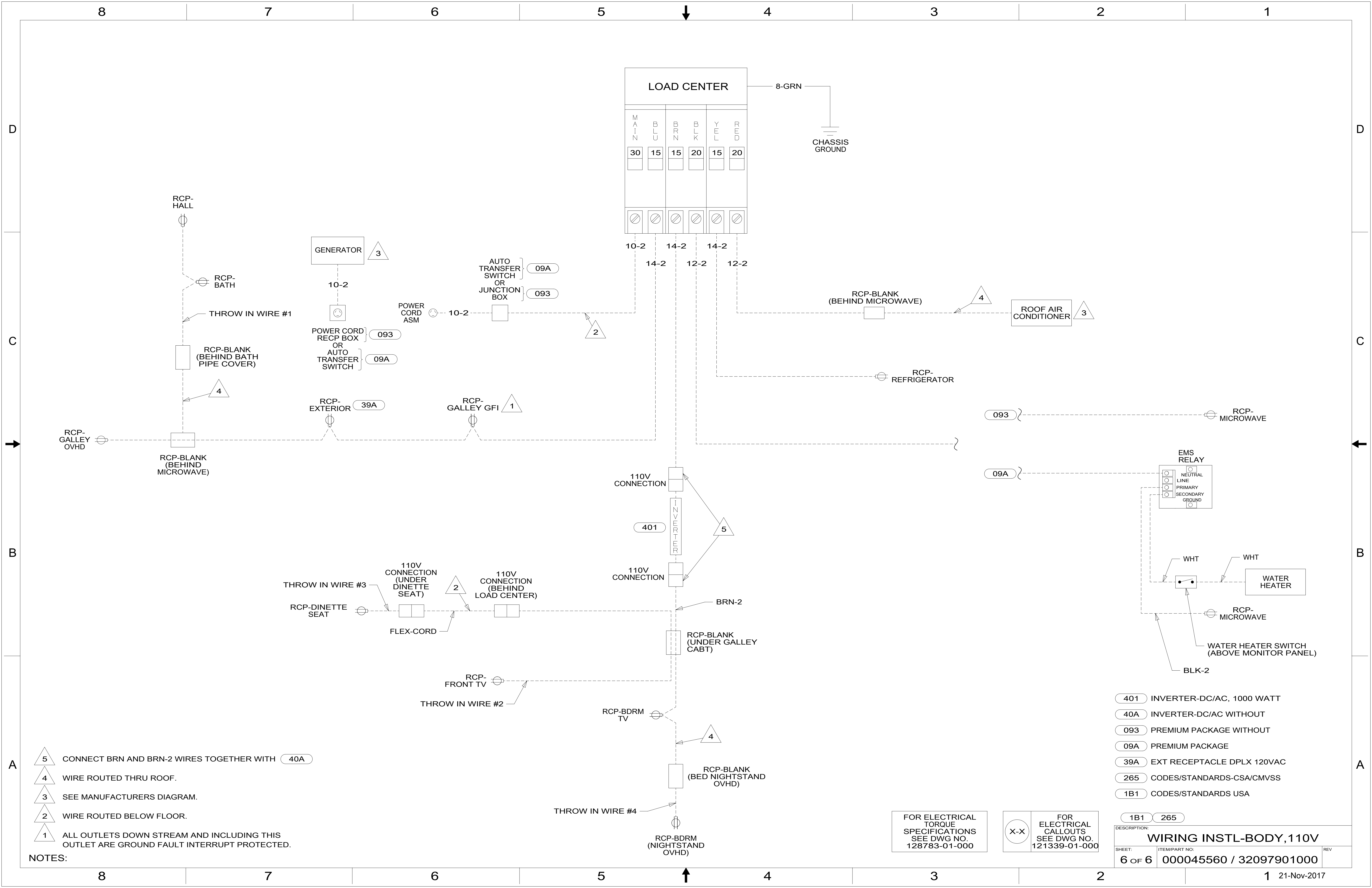
NOTES:

- 093 PREMIUM PACKAGE WITHOUT
- 09A PREMIUM PACKAGE
- 265 CODES/STANDARDS-CSA/CMVSS
- 1B1 CODES/STANDARDS USA

FOR ELECTRICAL TORQUE SPECIFICATIONS SEE DWG NO. 128783-01-000

FOR ELECTRICAL CALLOUTS SEE DWG NO. 121339-01-000

|                                |                         |
|--------------------------------|-------------------------|
| 1B1                            | 265                     |
| DESCRIPTION:                   |                         |
| <b>WIRING INSTL-BODY, 110V</b> |                         |
| SHEET:                         | ITEM/PART NO:           |
| 5 OF 6                         | 000045560 / 32097901000 |
| REV                            |                         |



- NOTES:**
- 5 CONNECT BRN AND BRN-2 WIRES TOGETHER WITH 40A
  - 4 WIRE ROUTED THRU ROOF.
  - 3 SEE MANUFACTURERS DIAGRAM.
  - 2 WIRE ROUTED BELOW FLOOR.
  - 1 ALL OUTLETS DOWN STREAM AND INCLUDING THIS OUTLET ARE GROUND FAULT INTERRUPT PROTECTED.

- 401 INVERTER-DC/AC, 1000 WATT
- 40A INVERTER-DC/AC WITHOUT
- 093 PREMIUM PACKAGE WITHOUT
- 09A PREMIUM PACKAGE
- 39A EXT RECEPTACLE DPLX 120VAC
- 265 CODES/STANDARDS-CSA/CMVSS
- 1B1 CODES/STANDARDS USA

FOR ELECTRICAL TORQUE SPECIFICATIONS SEE DWG NO. 128783-01-000

FOR ELECTRICAL CALLOUTS SEE DWG NO. 121339-01-000

DESCRIPTION: **WIRING INSTL-BODY, 110V**

SHEET: 6 OF 6    ITEM/PART NO.: 000045560 / 32097901000    REV: 1

21-Nov-2017