

8

7

6

5



4

3

2

1

D

D

C

C



B

B

A

A

8

7

6

5



4

3

2

1

CABLE ASM-STARTER (RED)	141415-32-049
CABLE ASM-COACH BATTERY (YEL)	141415-52-016
CABLE ASM-COACH BATTERY GND (BLK)	133566-12-008
CABLE ASM-GENERATOR (GRN)	141415-42-052
CABLE ASM-GENERATOR GND (BLK)	133566-12-008
CABLE ASM-STARTER,EXT (RED 2)	141415-32-018
CABLE ASM-INVERTER FUSE (ORG)	141415-62-006
CABLE ASM-INVERTER (ORG)	141415-62-028
CABLE ASM-INVERTER GND (BLK)	133566-12-030
CABLE ASM-INVERTER CASE GND (GRN)	136145-05-025

401

401

401

401

401 INVERTER-DC/AC, 1000 WATT

265 CODES/STANDARDS-CSA/CMVSS

1B1 CODES/STANDARDS USA

1B1 265



COPYRIGHT 2016 WINNEBAGO INDUSTRIES, INC.

DSNR:	ALL DIMENSIONS ARE IN MILLIMETERS	
DIFFR:		
UNSPECIFIED TOLERANCES:	MATERIAL:	
WHOLE DIM (X) ± 3		
ONE-PLACE (X.X) ± 1.5		
TWO-PLACE (X.XX) ± 0.50		
ANGLE ± 1°		

REFER TO ES0018 FOR FASTENER TIGHTENING GUIDELINES

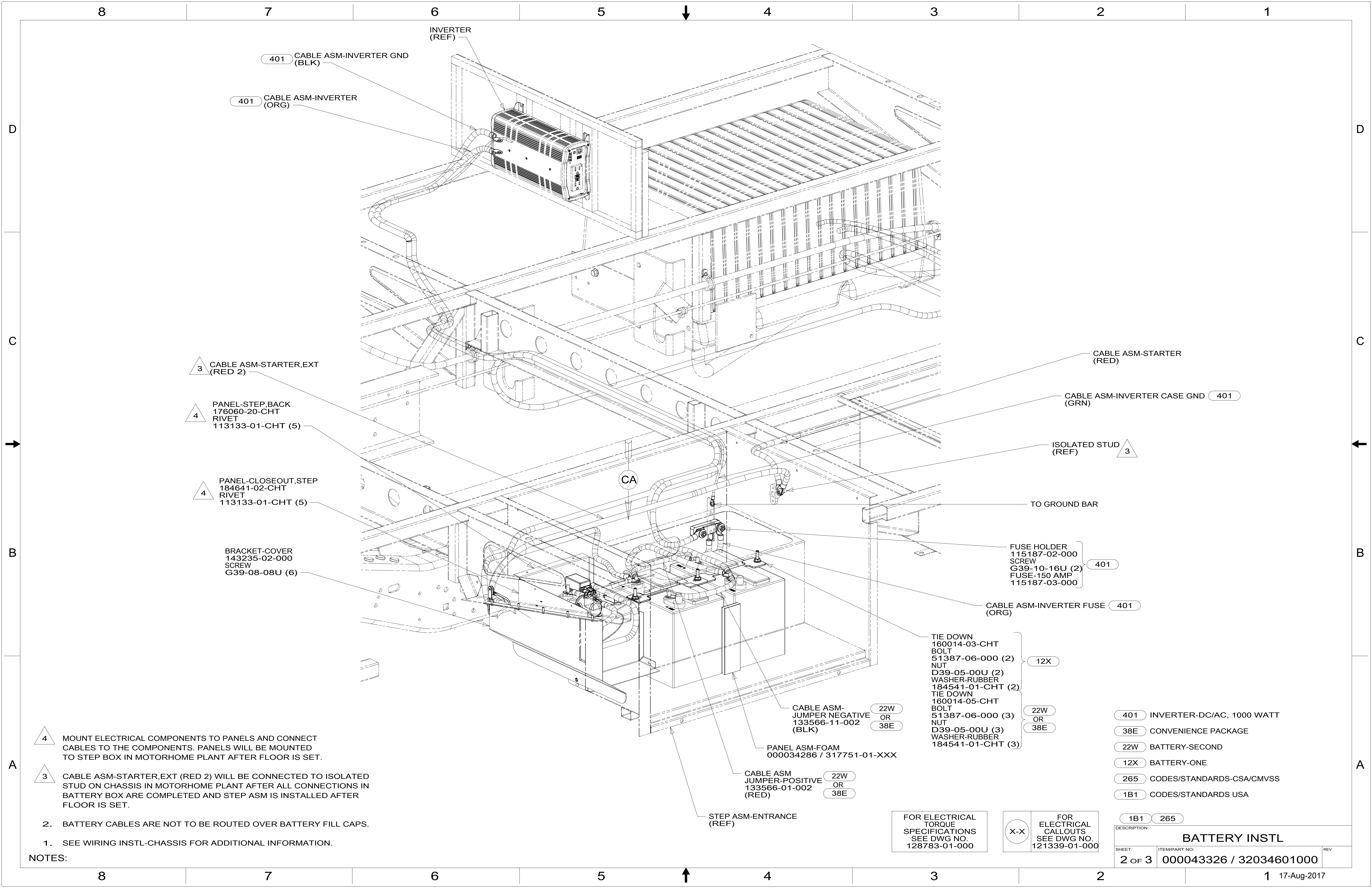
WEIGHT: (LBS) FIRST USED: 18 325B

BATTERY INSTL

SHEET: 1 OF 3	ITEM/PART NO: 000043326 / 32034601000	REV:
---------------	---------------------------------------	------

FOR ELECTRICAL TORQUE SPECIFICATIONS SEE DWG NO. 128783-01-000

FOR ELECTRICAL CALLOUTS SEE DWG NO. 121339-01-000



401 CABLE ASM-INVERTER GND (BLK)

401 CABLE ASM-INVERTER (ORG)

INVERTER (REF)

3 CABLE ASM-STARTER,EXT (RED 2)

4 PANEL-STEP,BACK 176060-20-CHT RIVET 113133-01-CHT (5)

4 PANEL-CLOSEOUT,STEP 184641-02-CHT RIVET 113133-01-CHT (5)

BRACKET-COVER 143235-02-000 SCREW G39-08-08U (6)

CABLE ASM-STARTER (RED)

CABLE ASM-INVERTER CASE GND (GRN) 401

ISOLATED STUD (REF) 3

TO GROUND BAR

FUSE HOLDER 115187-02-000 SCREW G39-10-16U (2) FUSE-150 AMP 115187-03-000 401

CABLE ASM-INVERTER FUSE (ORG) 401

TIE DOWN 160014-03-CHT BOLT 51387-06-000 (2) NUT D39-05-00U (2) WASHER-RUBBER 184541-01-CHT (2) TIE DOWN 160014-05-CHT BOLT 51387-06-000 (3) NUT D39-05-00U (3) WASHER-RUBBER 184541-01-CHT (3) 12X 22W OR 38E

CABLE ASM-JUMPER NEGATIVE (BLK) 22W OR 38E

PANEL ASM-FOAM 000034286 / 317751-01-XXX

CABLE ASM JUMPER-POSITIVE (RED) 22W OR 38E

STEP ASM-ENTRANCE (REF)

4 MOUNT ELECTRICAL COMPONENTS TO PANELS AND CONNECT CABLES TO THE COMPONENTS. PANELS WILL BE MOUNTED TO STEP BOX IN MOTORHOME PLANT AFTER FLOOR IS SET.

3 CABLE ASM-STARTER,EXT (RED 2) WILL BE CONNECTED TO ISOLATED STUD ON CHASSIS IN MOTORHOME PLANT AFTER ALL CONNECTIONS IN BATTERY BOX ARE COMPLETED AND STEP ASM IS INSTALLED AFTER FLOOR IS SET.

2. BATTERY CABLES ARE NOT TO BE ROUTED OVER BATTERY FILL CAPS.

1. SEE WIRING INSTL-CHASSIS FOR ADDITIONAL INFORMATION.

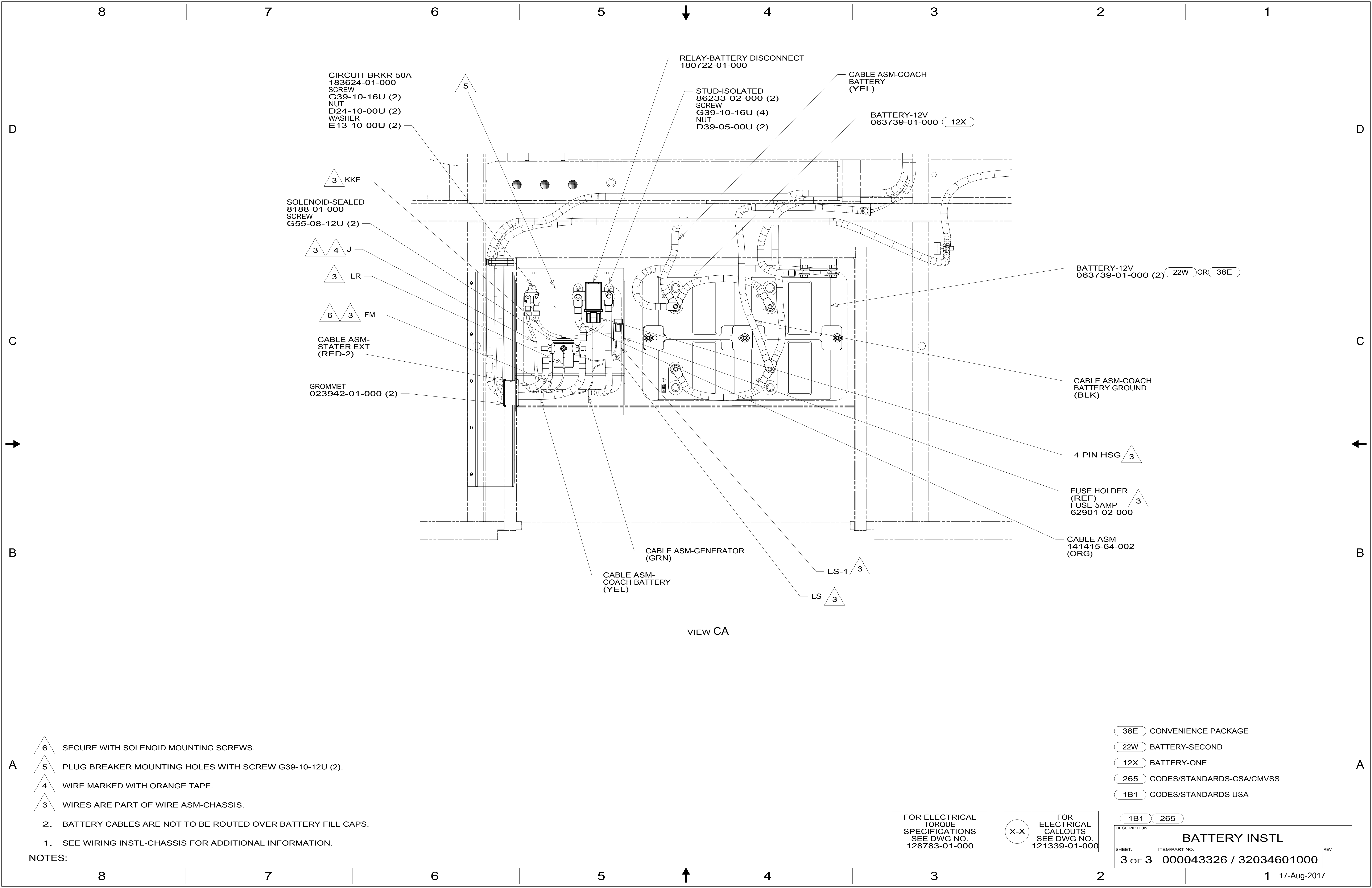
NOTES:

FOR ELECTRICAL TORQUE SPECIFICATIONS SEE DWG NO. 128783-01-000

FOR ELECTRICAL CALLOUTS SEE DWG NO. 121339-01-000

- 401 INVERTER-DC/AC, 1000 WATT
- 38E CONVENIENCE PACKAGE
- 22W BATTERY-SECOND
- 12X BATTERY-ONE
- 265 CODES/STANDARDS-CSA/CMVSS
- 1B1 CODES/STANDARDS USA

DESCRIPTION:		1B1 265
BATTERY INSTL		
SHEET:	ITEM/PART NO.:	REV:
2 OF 3	000043326 / 32034601000	



CIRCUIT BRKR-50A
183624-01-000
SCREW
G39-10-16U (2)
NUT
D24-10-00U (2)
WASHER
E13-10-00U (2)

RELAY-BATTERY DISCONNECT
180722-01-000

CABLE ASM-COACH
BATTERY
(YEL)

BATTERY-12V
063739-01-000 12X

STUD-ISOLATED
86233-02-000 (2)
SCREW
G39-10-16U (4)
NUT
D39-05-00U (2)

SOLENOID-SEALED
8188-01-000
SCREW
G55-08-12U (2)

BATTERY-12V
063739-01-000 (2) 22W OR 38E

3 4 J

CABLE ASM-COACH
BATTERY GROUND
(BLK)

3 LR

4 PIN HSG 3

6 3 FM

CABLE ASM-
STATER EXT
(RED-2)

FUSE HOLDER
(REF)
FUSE-5AMP
62901-02-000

GROMMET
023942-01-000 (2)

CABLE ASM-
141415-64-002
(ORG)

CABLE ASM-GENERATOR
(GRN)

LS-1 3

CABLE ASM-
COACH BATTERY
(YEL)

LS 3

VIEW CA

- 6 SECURE WITH SOLENOID MOUNTING SCREWS.
- 5 PLUG BREAKER MOUNTING HOLES WITH SCREW G39-10-12U (2).
- 4 WIRE MARKED WITH ORANGE TAPE.
- 3 WIRES ARE PART OF WIRE ASM-CHASSIS.

- 2. BATTERY CABLES ARE NOT TO BE ROUTED OVER BATTERY FILL CAPS.
- 1. SEE WIRING INSTL-CHASSIS FOR ADDITIONAL INFORMATION.

NOTES:

- 38E CONVENIENCE PACKAGE
- 22W BATTERY-SECOND
- 12X BATTERY-ONE
- 265 CODES/STANDARDS-CSA/CMVSS
- 1B1 CODES/STANDARDS USA

FOR ELECTRICAL
TORQUE
SPECIFICATIONS
SEE DWG NO.
128783-01-000

FOR ELECTRICAL
CALLOUTS
SEE DWG NO.
121339-01-000

DESCRIPTION:		1B1 265	
BATTERY INSTL			
SHEET:	ITEM/PART NO.:	REV	
3 OF 3	000043326 / 32034601000		