

- NOTES:**
- 3 SEE RADIO/MONITOR INSTL FOR ADDITIONAL INFORMATION.
 - 4 CUT LIGHT GREEN/RED WIRE FROM PARK BRAKE SWITCH AND RECONNECT TO CIRCUIT DY OF CHASSIS ASM AS SHOWN.
 - 5 FUSE LOCATED UNDER DASH BY STEERING COLUMN.
 - 6 FUSE LOCATED UNDER DASH BY PARK BRAKE ASM.
 - 7 COIL WIRES BACK AND SECURE TO LOOM WITH 60T
 - 2. AT MINIMUM ALL WIRES TO BE SUPPORTED AND SECURED PER CODE REQUIREMENTS. USE CLAMP 10495 OR 10497 OR WIRE TIE 8343 OR 108046 AND SCREW G67-XX-XXX OR G56-XX-XXX AS APPROPRIATE FOR INSTALLATION.
 - 1. SECURE CONDUIT 41953, TAB AS REQUIRED, OVER ALL WIRES IN CONTACT WITH SHARP EDGES.

- 64A JACKS-STABILIZING, ELECTRIC
- 60T JACKS-STABILIZING,ELECT W/O
- 283 MIRRORS-UPGRADE W/CAMERA
- 265 CODES/STANDARDS-CSA/CMVSS
- 1B1 CODES/STANDARDS USA
- 1B1 265

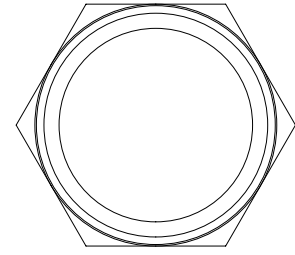
WINNEBAGO COPYRIGHT 2016 WINNEBAGO INDUSTRIES, INC.	
DSNR:	ALL DIMENSIONS ARE IN MILLIMETERS
DIFTR:	
UNSPECIFIED TOLERANCES:	MATERIAL:
WHOLE DIM (X) : 3	
ONE-PLACE (X.X) : 1.5	
TWO-PLACE (X.XX) : 0.50	
ANGLE : 1°	
REFER TO ES0018 FOR FASTENER TIGHTENING GUIDELINES	WEIGHT: (LBS) FIRST USED: 18 325B
DESCRIPTION: WIRING INSTL-CHASSIS	
SHEET: 1 OF 3	ITEM/PART NO: 000043291 / 32033501000
REF:	1 17-Aug-2017

FOR ELECTRICAL TORQUE SPECIFICATIONS SEE DWG NO. 128783-01-000

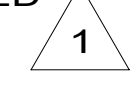
FOR ELECTRICAL CALLOUTS SEE DWG NO. 121339-01-000

STABILIZER DOWN

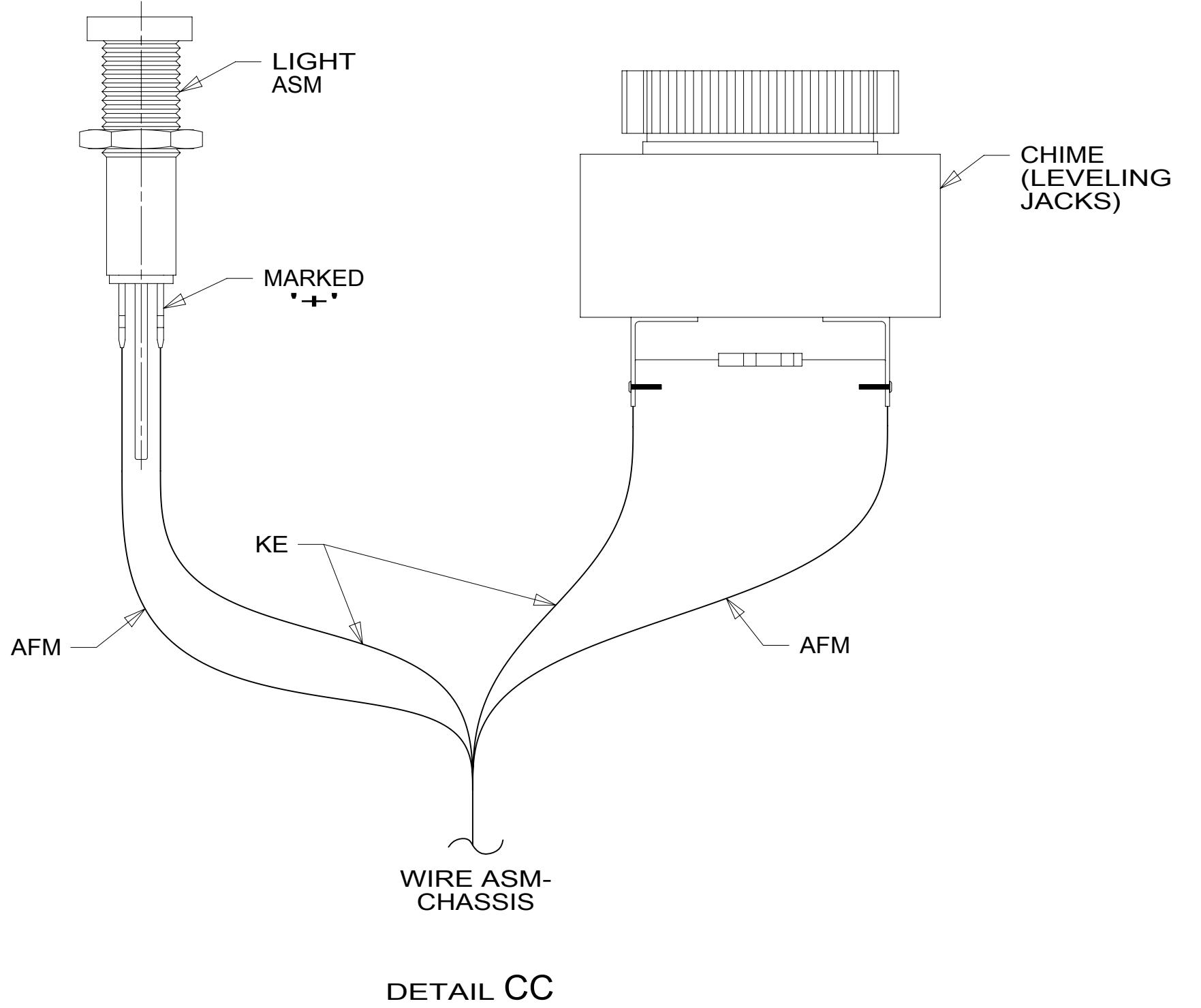
LABEL-STABILIZER DOWN
000007625 / 310619-01-CHT



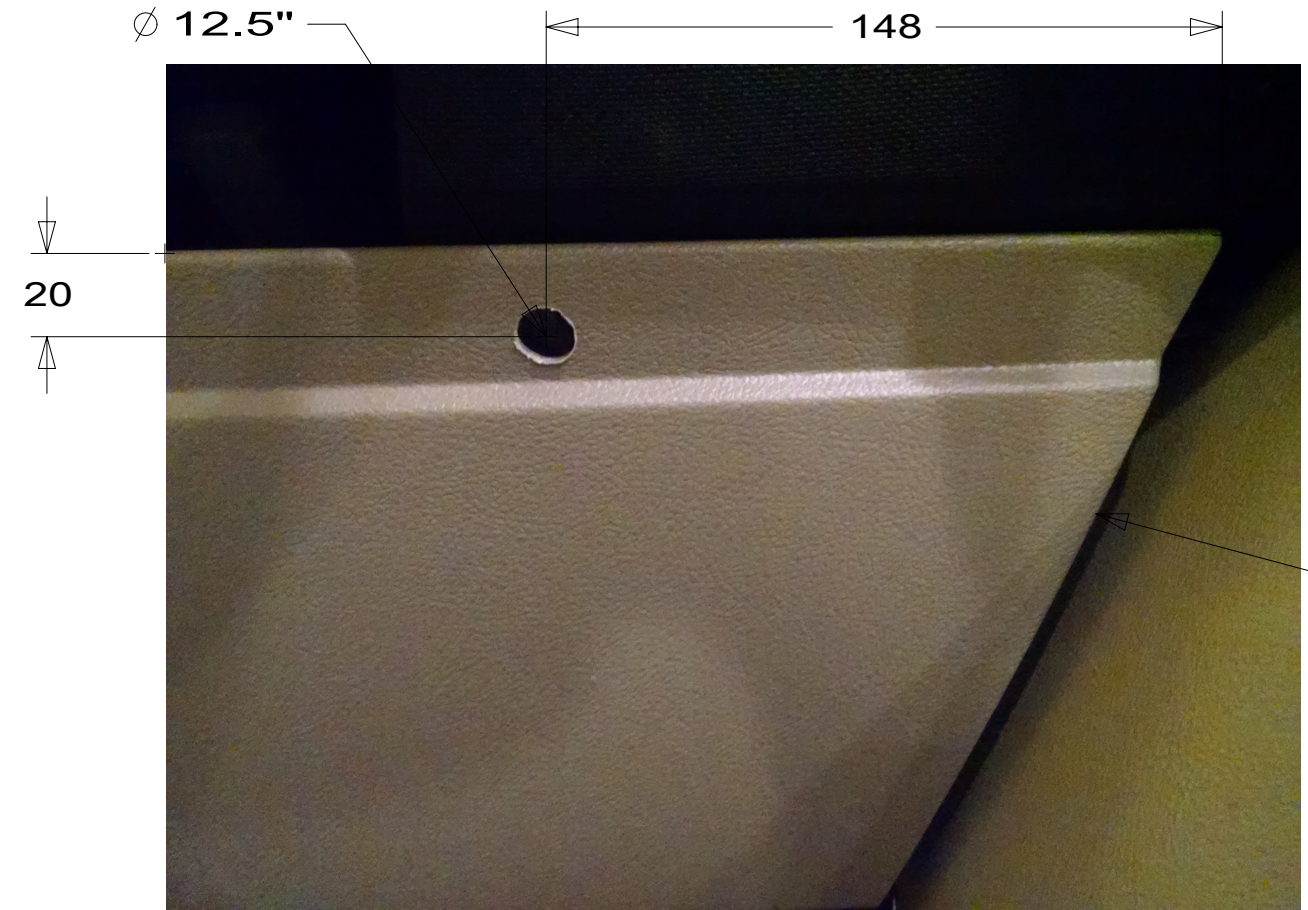
LIGHT ASM-INDICATOR, RED
190682-01-000
DETAIL CC



DETAIL CA

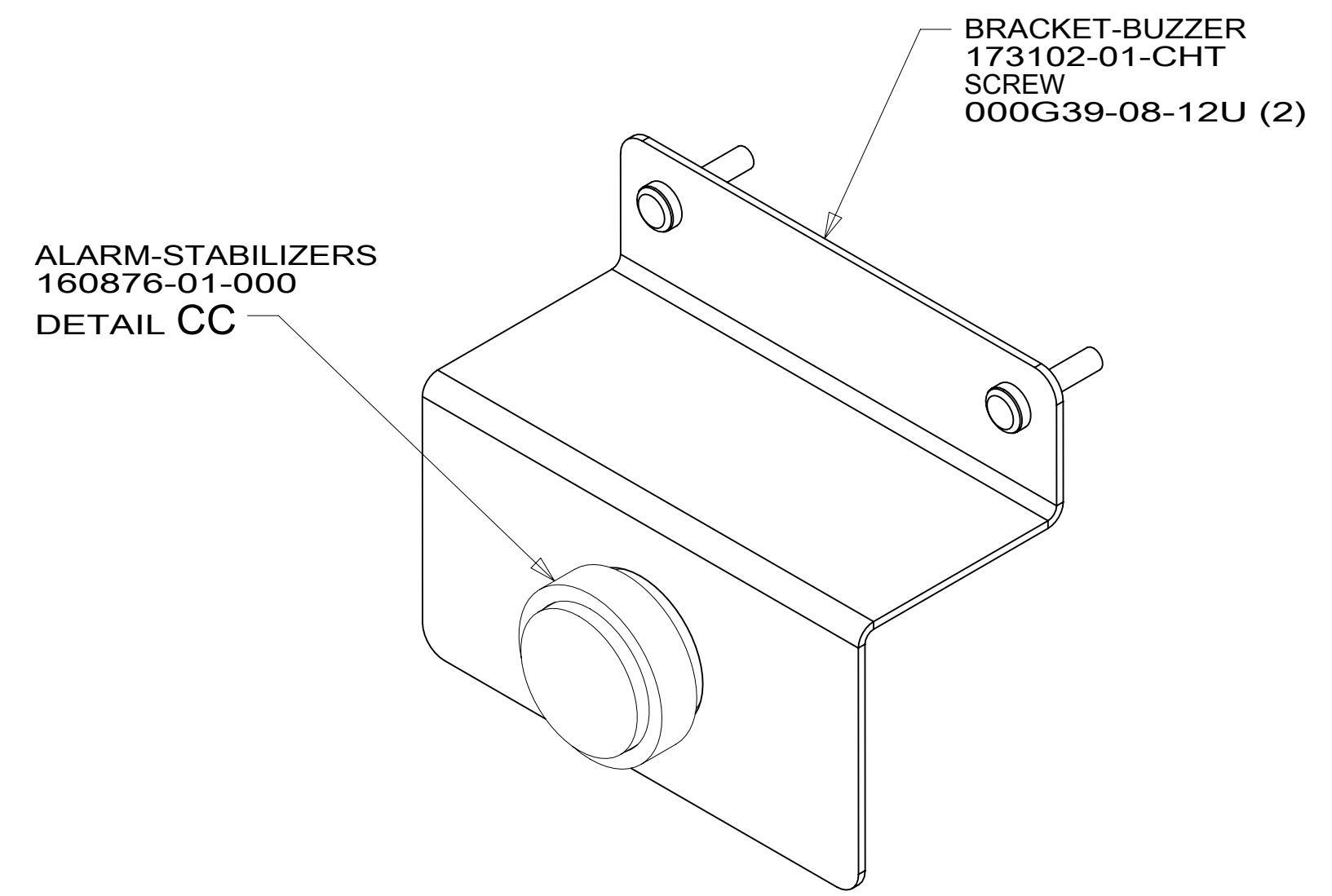


DETAIL CC



RIGHT SIDE OF STEERING COLUMN

DETAIL CB



ALARM-STABILIZERS
160876-01-000
DETAIL CC

BRACKET-BUZZER
173102-01-CHT
SCREW
000G39-08-12U (2)

DETAIL CD

NOTES:
1 FOR HOLE SIZE AND LOCATION SEE DETAIL CB.

FOR ELECTRICAL TORQUE SPECIFICATIONS SEE DWG NO. 128783-01-000

FOR ELECTRICAL CALLOUTS SEE DWG NO. 121339-01-000

- 64A JACKS-STABILIZING, ELECTRIC
- 265 CODES/STANDARDS-CSA/CMVSS
- 1B1 CODES/STANDARDS USA

DESCRIPTION: WIRING INSTL-CHASSIS		
SHEET: 3 OF 3	ITEM/PART NO: 000043291 / 32033501000	REV