

8 7 6 5 4 3 2 1

D

D

C

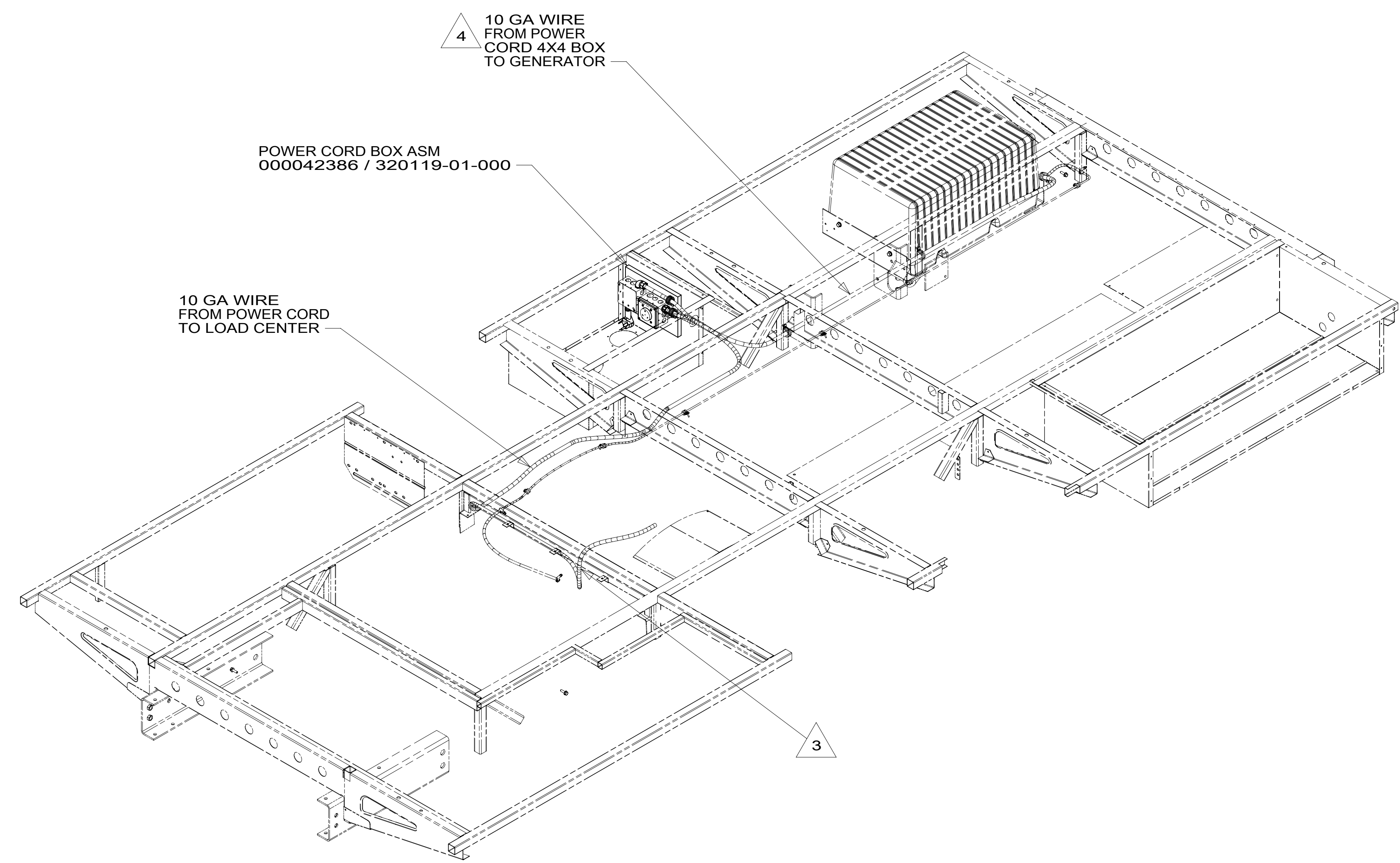
C

B

B

A

A



- 4 SEE GENERATOR INSTL FOR ADDITIONAL INFORMATION.
- 3 ROUTE WIRE THRU FLOOR.
- 2. ALL 110V WIRE TO BE CLAMPED WITH CLAMP 10497-05-000 WITHIN 200MM OF OUTLET BOXES, USE SCREW G67-10-12B.
- 1. AT MINIMUM ALL WIRES TO BE SUPPORTED AND SECURED PER CODE REQUIREMENTS. USE CLAMP 10495 OR 10497 OR WIRE TIE 8343 OR 108046 AND SCREW G67-XX-XXX OR G56-XX-XXX AS APPROPRIATE FOR INSTALLATION.

NOTES:

8 7 6 5 4 3 2 1

- 265 CODES/STANDARDS-CSA/CMVSS
- 1B1 CODES/STANDARDS USA
- 1B1 265

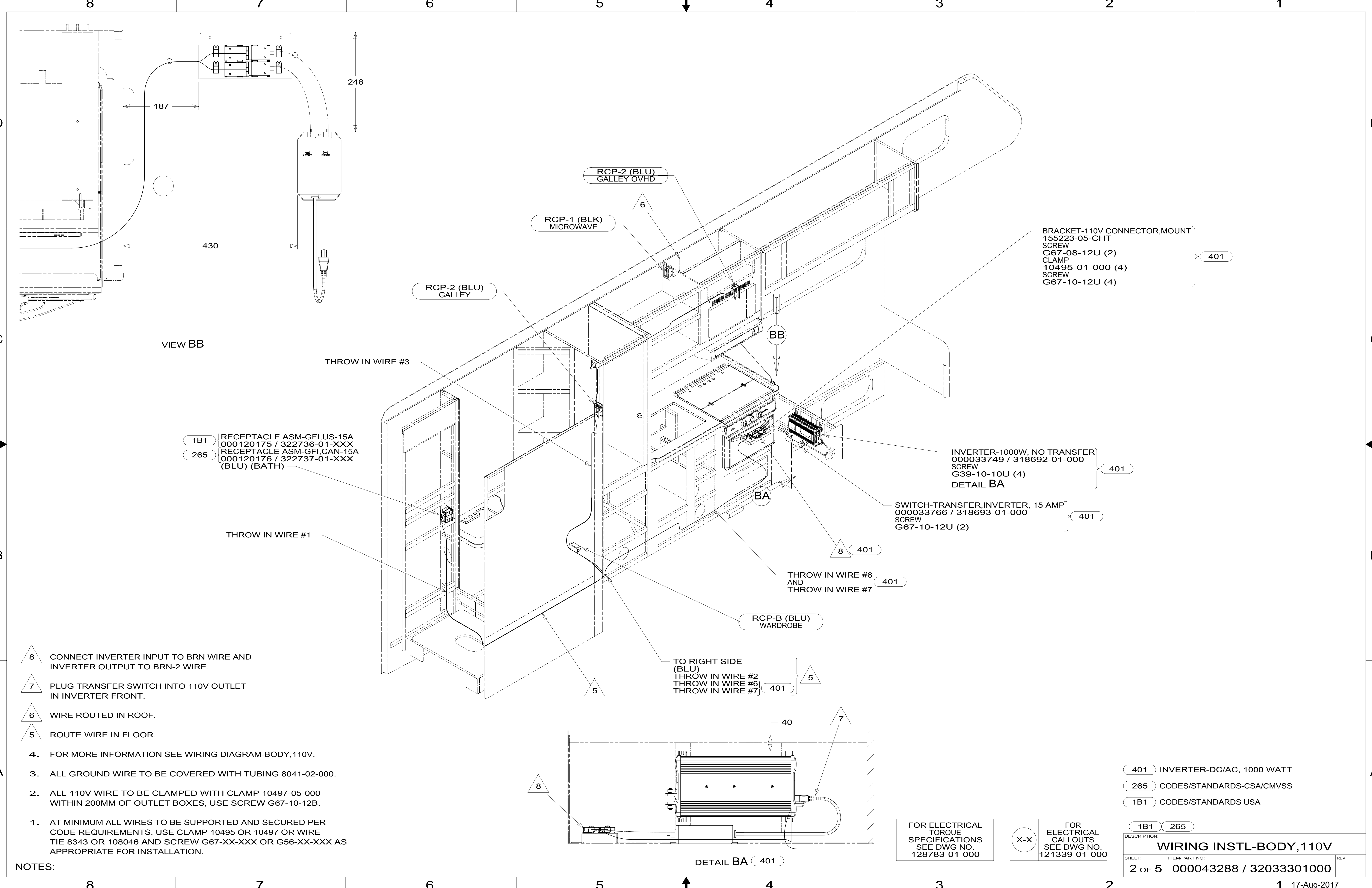


DSNR:		ALL DIMENSIONS ARE IN MILLIMETERS	
DFFR:		MATERIAL:	
UNSPECIFIED TOLERANCES:		WEIGHT: (LBS)	FIRST USED:
WHOLE DIM (X)	: 3		18 325B
ONE-PLACE (X.X)	: 1.5		
TWO-PLACE (X.XX)	: 0.50		
ANGLE	: 1°		

FOR ELECTRICAL TORQUE SPECIFICATIONS SEE DWG NO. 128783-01-000

FOR ELECTRICAL CALLOUTS SEE DWG NO. 121339-01-000

DESCRIPTION:		
WIRING INSTL-BODY, 110V		
SHEET:	ITEM/PART NO.:	REV:
1 OF 5	000043288 / 32033301000	
REF:		1 17-Aug-2017



VIEW BB

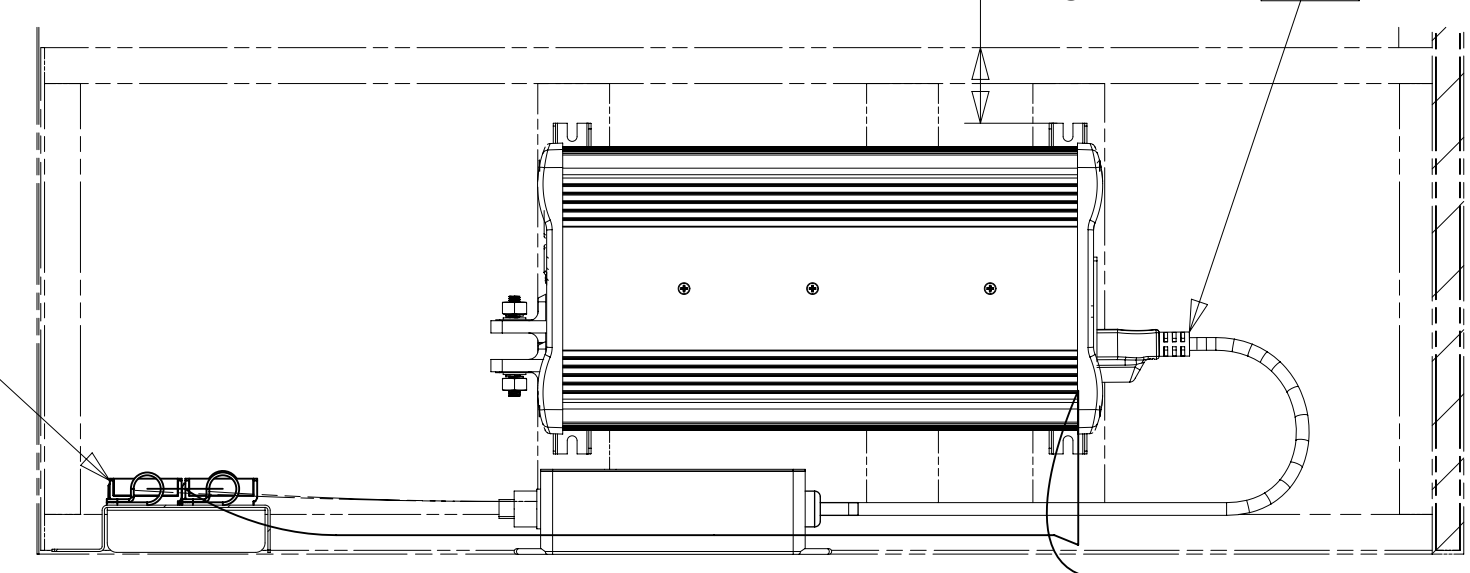
- 1B1 RECEPTACLE ASM-GFI,US-15A
000120175 / 322736-01-XXX
- 265 RECEPTACLE ASM-GFI,CAN-15A
000120176 / 322737-01-XXX
(BLU) (BATH)

- BRACKET-110V CONNECTOR,MOUNT
155223-05-CHT
SCREW
G67-08-12U (2)
CLAMP
10495-01-000 (4)
SCREW
G67-10-12U (4)

- INVERTER-1000W, NO TRANSFER
000033749 / 318692-01-000
SCREW
G39-10-10U (4)
DETAIL BA

- SWITCH-TRANSFER,INVERTER, 15 AMP
000033766 / 318693-01-000
SCREW
G67-10-12U (2)

- TO RIGHT SIDE
(BLU)
THROW IN WIRE #2
THROW IN WIRE #6
THROW IN WIRE #7



DETAIL BA 401

- 8 CONNECT INVERTER INPUT TO BRN WIRE AND
INVERTER OUTPUT TO BRN-2 WIRE.
- 7 PLUG TRANSFER SWITCH INTO 110V OUTLET
IN INVERTER FRONT.
- 6 WIRE ROUTED IN ROOF.
- 5 ROUTE WIRE IN FLOOR.
- 4. FOR MORE INFORMATION SEE WIRING DIAGRAM-BODY,110V.
- 3. ALL GROUND WIRE TO BE COVERED WITH TUBING 8041-02-000.
- 2. ALL 110V WIRE TO BE CLAMPED WITH CLAMP 10497-05-000
WITHIN 200MM OF OUTLET BOXES, USE SCREW G67-10-12B.
- 1. AT MINIMUM ALL WIRES TO BE SUPPORTED AND SECURED PER
CODE REQUIREMENTS. USE CLAMP 10495 OR 10497 OR WIRE
TIE 8343 OR 108046 AND SCREW G67-XX-XXX OR G56-XX-XXX AS
APPROPRIATE FOR INSTALLATION.

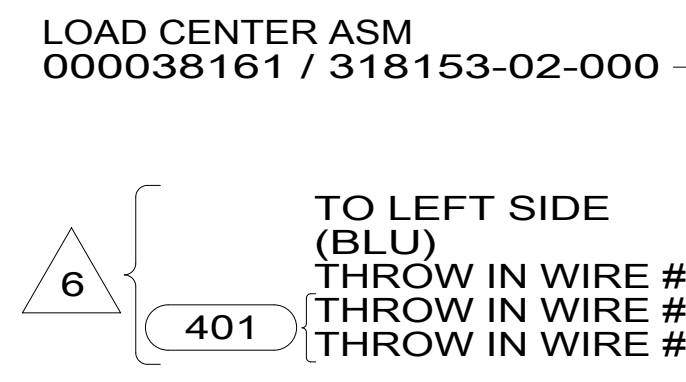
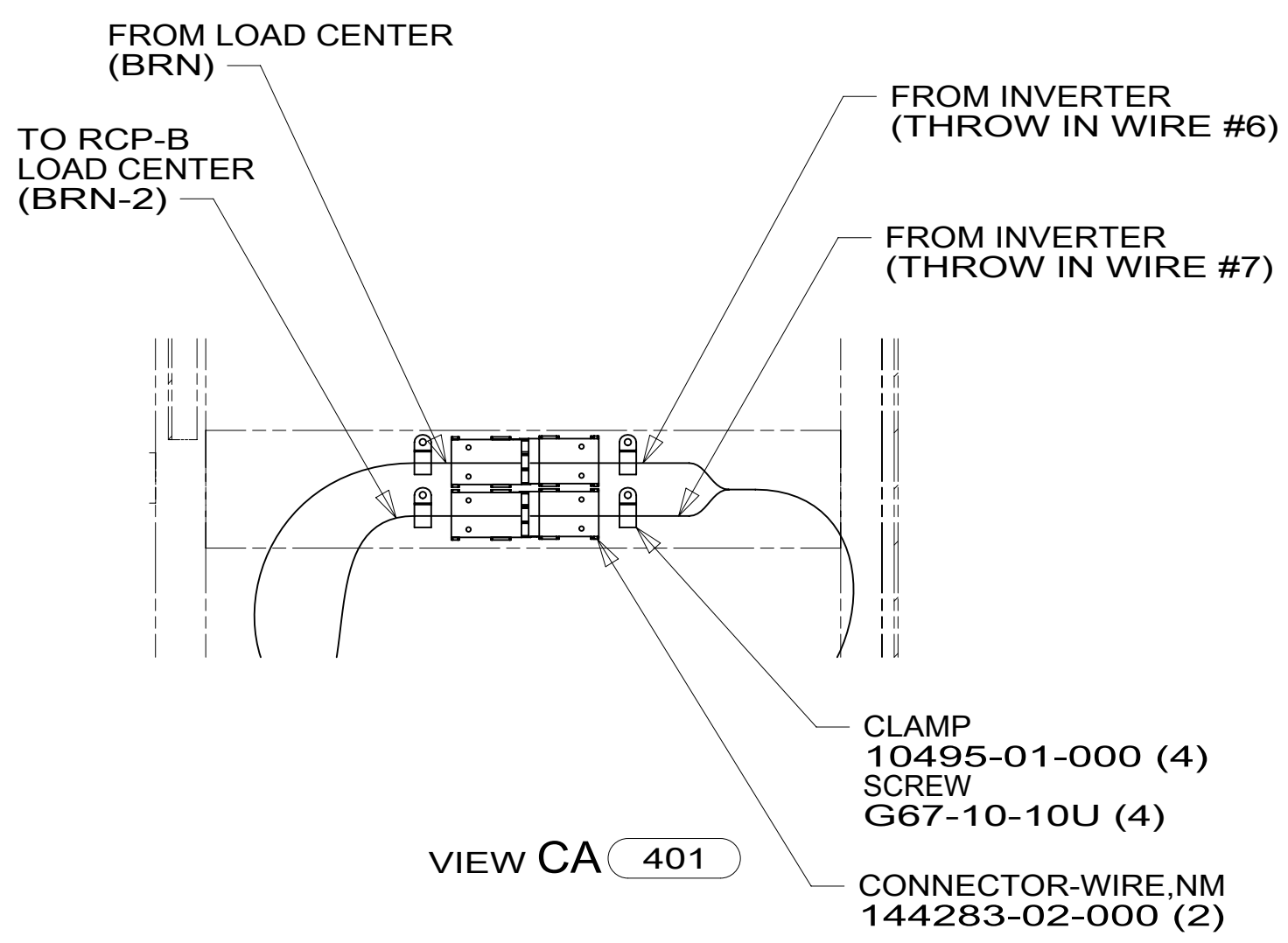
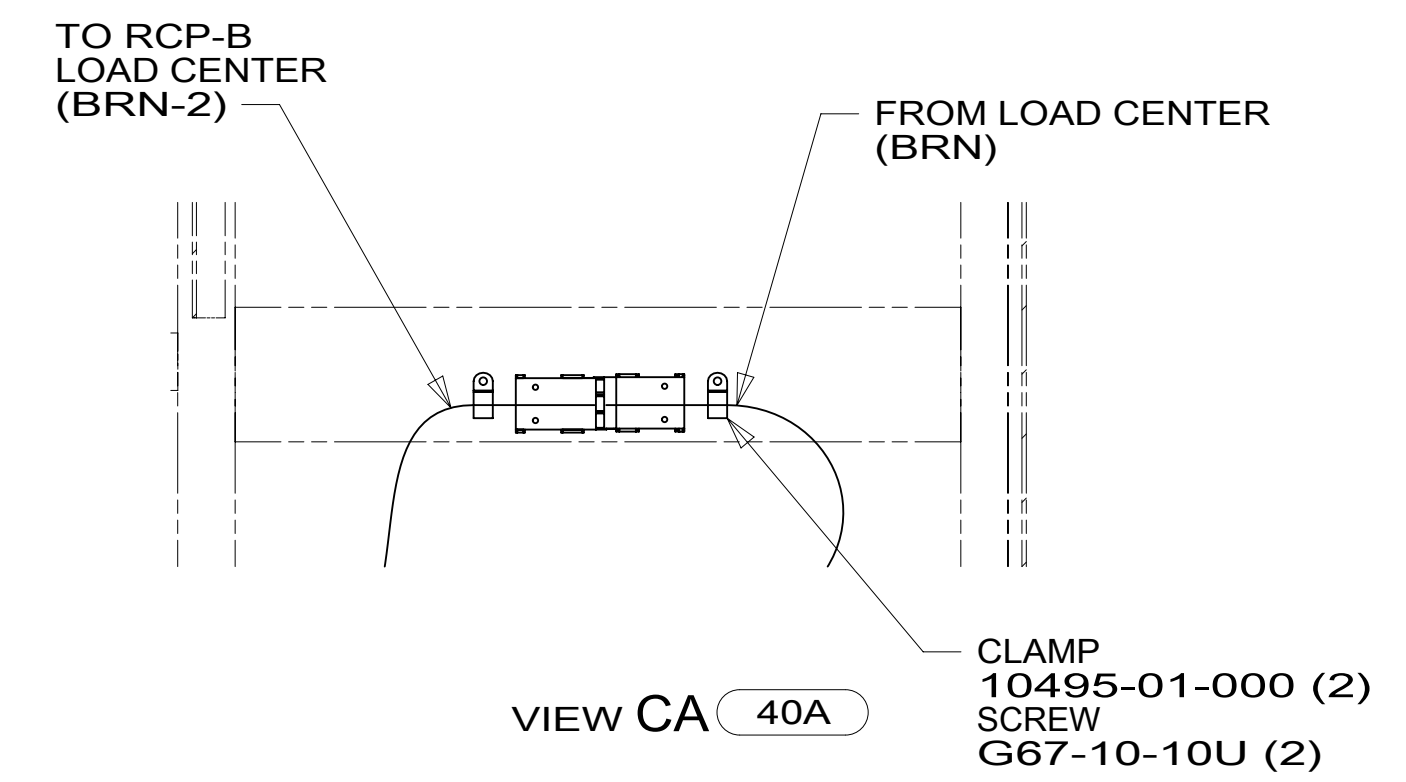
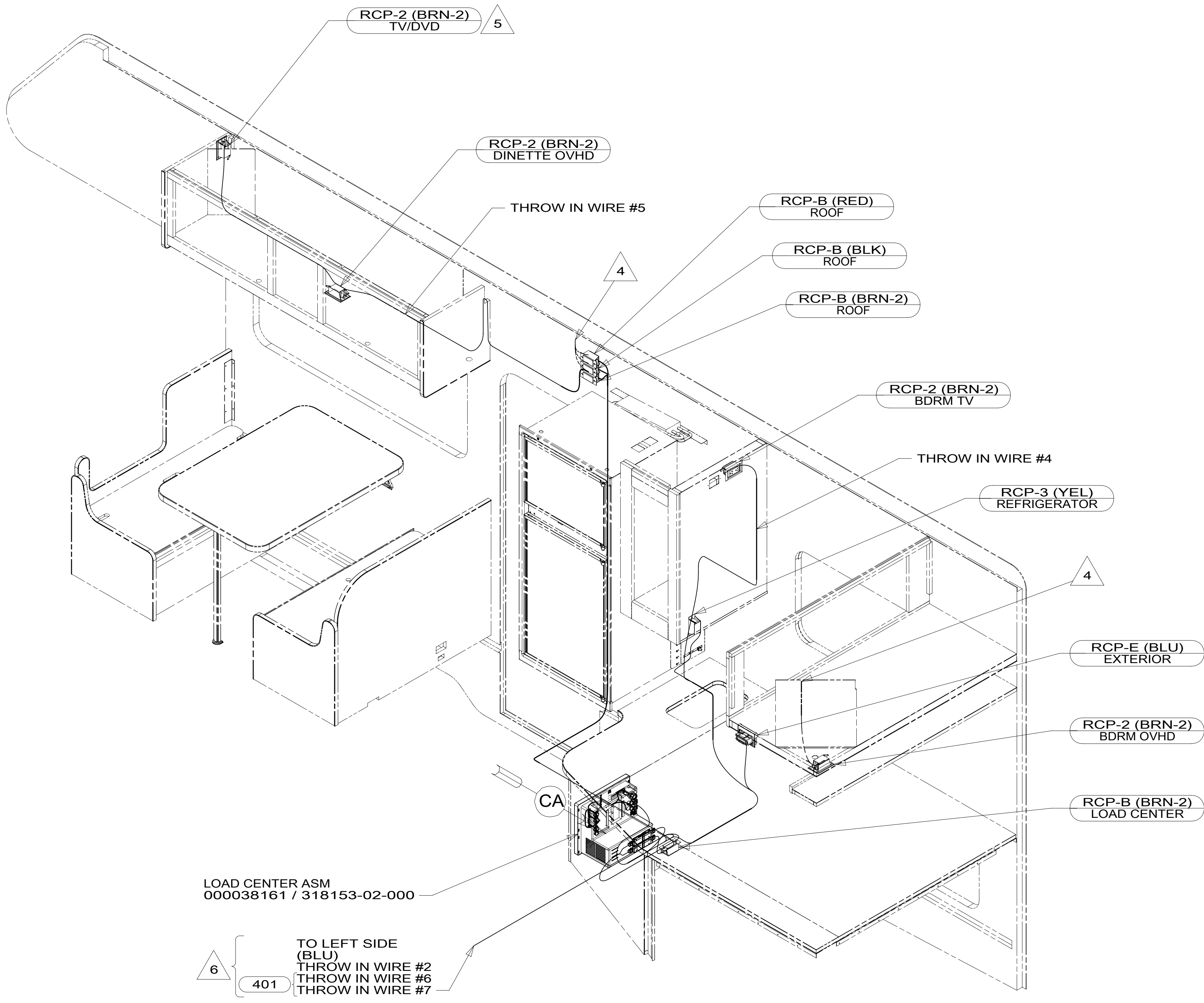
NOTES:

- 401 INVERTER-DC/AC, 1000 WATT
- 265 CODES/STANDARDS-CSA/CMVSS
- 1B1 CODES/STANDARDS USA

FOR ELECTRICAL
TORQUE
SPECIFICATIONS
SEE DWG NO.
128783-01-000

FOR
ELECTRICAL
CALLOUTS
SEE DWG NO.
121339-01-000

DESCRIPTION:		1B1 265	
WIRING INSTL-BODY, 110V			
SHEET:	ITEM/PART NO.:	REV	
2 OF 5	000043288 / 32033301000		



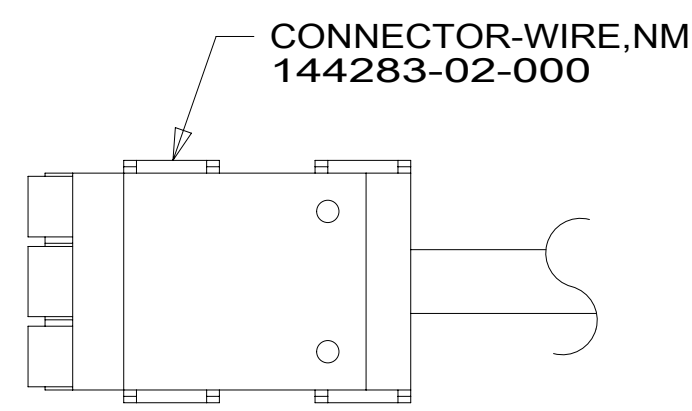
- NOTES:
- 6 WIRES ROUTED IN FLOOR.
 - 5 SEE WIRING INSTL-TV/DVD FOR ADDITIONAL INFORMATION.
 - 4 WIRES IN ROOF.
 - 3. ALL GROUND WIRE TO BE COVERED WITH TUBING 8041-02-000.
 - 2. ALL 110V WIRE TO BE CLAMPED WITH CLAMP 10497-05-000 WITHIN 200MM OF OUTLET BOXES, USE SCREW G67-10-12B.
 - 1. AT MINIMUM ALL WIRES TO BE SUPPORTED AND SECURED PER CODE REQUIREMENTS. USE CLAMP 10495 OR 10497 OR WIRE TIE 8343 OR 108046 AND SCREW G67-XX-XXX OR G56-XX-XXX AS APPROPRIATE FOR INSTALLATION.

- 401 INVERTER-DC/AC, 1000 WATT
- 40A INVERTER-DC/AC WITHOUT
- 265 CODES/STANDARDS-CSA/CMVSS
- 1B1 CODES/STANDARDS USA

FOR ELECTRICAL TORQUE SPECIFICATIONS SEE DWG NO. 128783-01-000

FOR ELECTRICAL CALLOUTS SEE DWG NO. 121339-01-000

DESCRIPTION:	
WIRING INSTL-BODY, 110V	
SHEET: 3 OF 5	ITEM/PART NO: 000043288 / 32033301000
REV	17-Aug-2017



DETAIL DA

RED	1B1	136135-07-041	
	265	136136-07-041	
YEL	1B1	136131-05-023	
	265	136134-05-023	
BLK	1B1	136135-06-041	
	265	136136-06-041	
BRN	1B1	136131-03-010	4
	265	136134-03-010	4
BRN-2	1B1	136131-19-044	4
	265	136134-19-044	4
BLU	1B1	136131-02-055	
	265	136134-02-055	
THROW IN WIRE #1	1B1	136131-02-035	
	265	136134-02-035	
THROW IN WIRE #2	1B1	136131-02-035	
	265	136134-02-035	
THROW IN WIRE #3	1B1	136131-02-042	
	265	136134-02-042	
THROW IN WIRE #4	1B1	136131-19-031	
	265	136134-19-031	
THROW IN WIRE #5	1B1	136131-19-037	
	265	136134-19-037	
THROW IN WIRE #6	1B1	136131-03-052	4 401
	265	136134-03-052	4 401
THROW IN WIRE #7	1B1	136131-19-052	4 401
	265	136134-19-052	4 401
MAIN	1B1	164957-13-036	5
	265	164957-14-036	5
GROUND MAIN		136145-06-018	

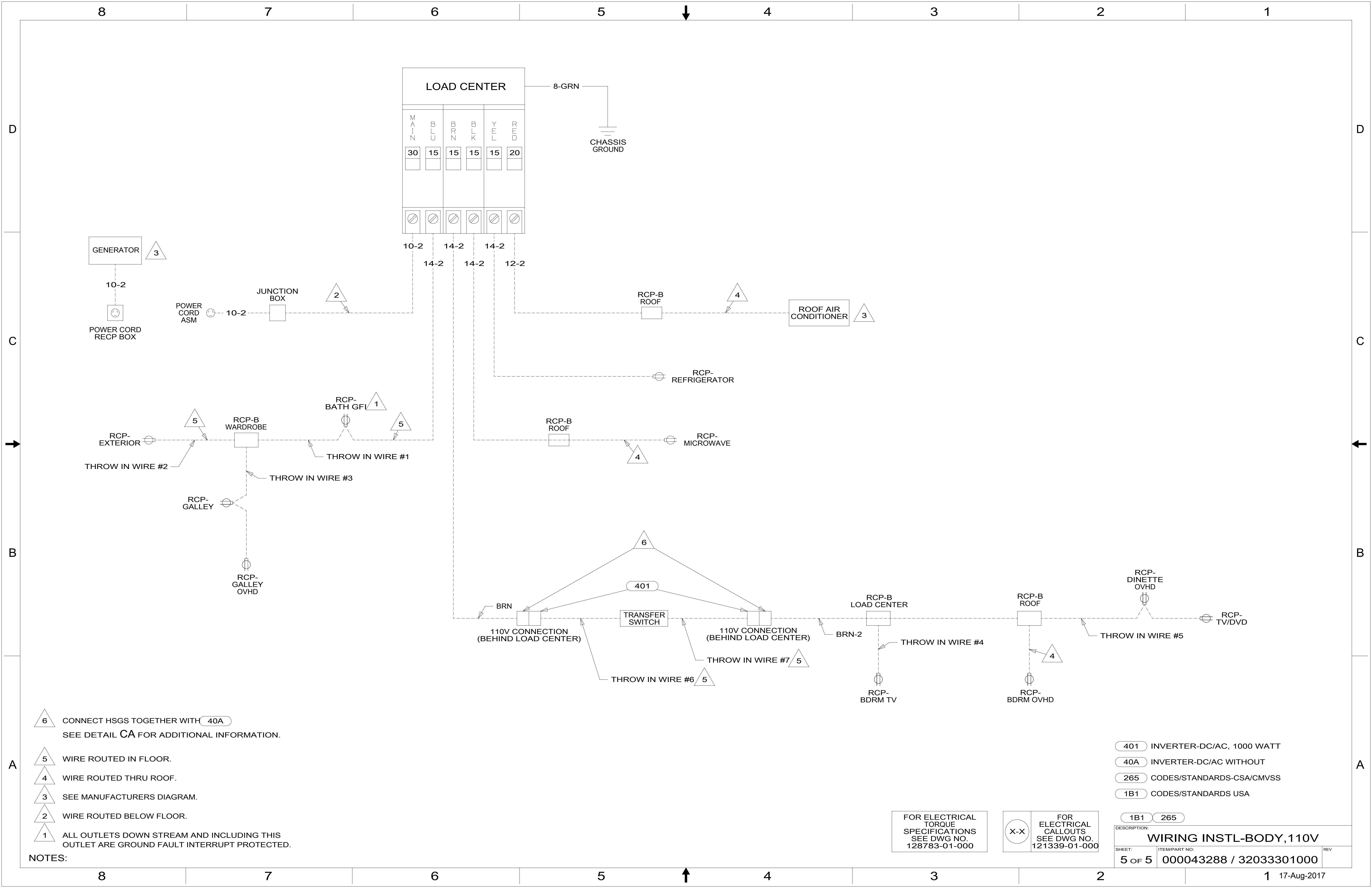
- NOTES:
- 5 WIRE PREP TO INSTALL ON POWER BOX ASM. LOAD CENTER END WILL BE INSTALLED ON LINE.
 - 4 SEE DETAIL DA FOR CONNECTOR INSTALLATION.
 - 3. SEE WIRING INSTL-BODY,12V FOR ADDITIONAL INFORMATION.
 - 2. SECURE WIRES TO BACKSIDE OF LOAD CENTER WITH WIRE TIE 116673-01-000.
 - 1. ALL GROUND WIRES TO BE COVERED WITH TUBING 8041-02-000.

- 401 INVERTER-DC/AC, 1000 WATT
- 265 CODES/STANDARDS-CSA/CMVSS
- 1B1 CODES/STANDARDS USA

FOR ELECTRICAL TORQUE SPECIFICATIONS SEE DWG NO. 128783-01-000

FOR ELECTRICAL CALLOUTS SEE DWG NO. 121339-01-000

DESCRIPTION: 1B1 265
WIRING INSTL-BODY, 110V
 SHEET: 4 OF 5 ITEM/PART NO: 000043288 / 32033301000 REV



- 6 CONNECT HSGS TOGETHER WITH 40A
 SEE DETAIL CA FOR ADDITIONAL INFORMATION.
- 5 WIRE ROUTED IN FLOOR.
- 4 WIRE ROUTED THRU ROOF.
- 3 SEE MANUFACTURERS DIAGRAM.
- 2 WIRE ROUTED BELOW FLOOR.
- 1 ALL OUTLETS DOWN STREAM AND INCLUDING THIS
 OUTLET ARE GROUND FAULT INTERRUPT PROTECTED.

NOTES:

- 401 INVERTER-DC/AC, 1000 WATT
 40A INVERTER-DC/AC WITHOUT
 265 CODES/STANDARDS-CSA/CMVSS
 1B1 CODES/STANDARDS USA

FOR ELECTRICAL
 TORQUE
 SPECIFICATIONS
 SEE DWG NO.
 128783-01-000

FOR ELECTRICAL
 CALLOUTS
 SEE DWG NO.
 121339-01-000

DESCRIPTION:	
WIRING INSTL-BODY, 110V	
SHEET:	ITEM/PART NO.:
5 OF 5	000043288 / 32033301000
REV	