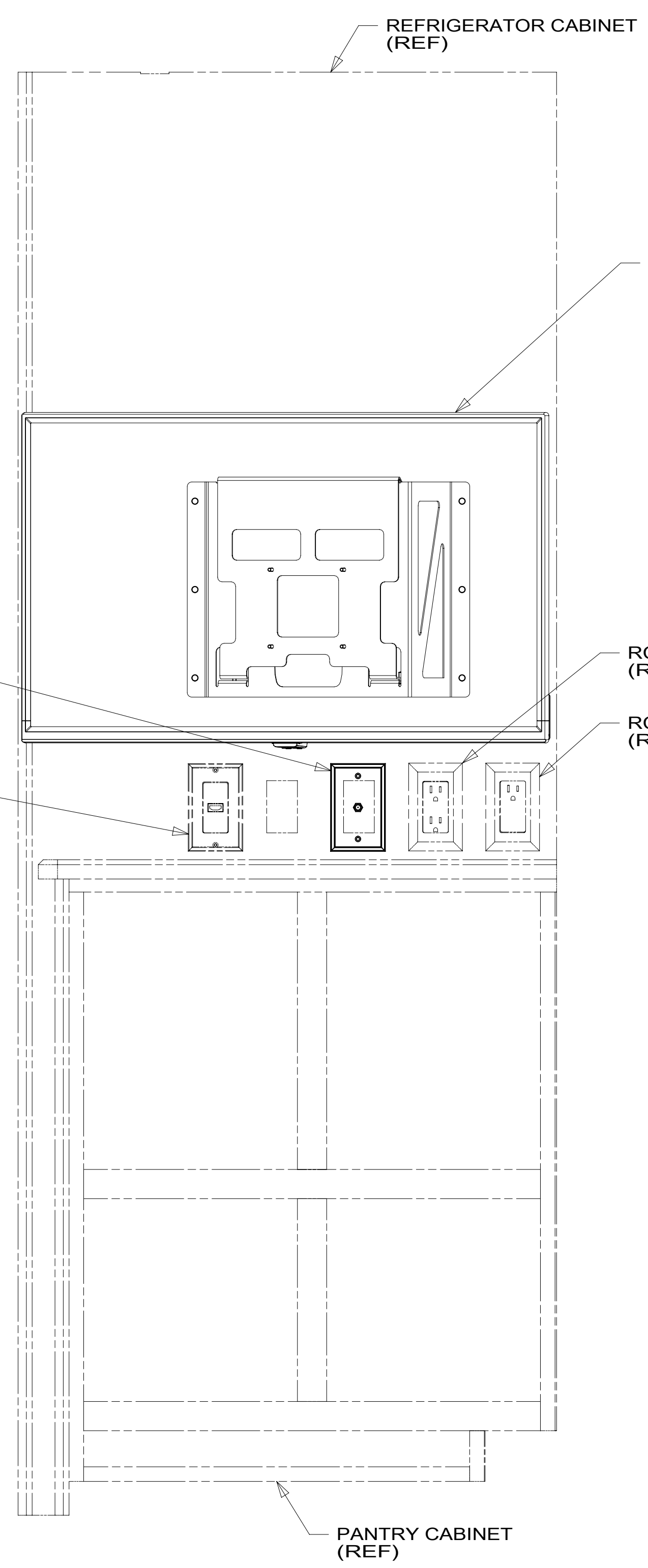


8 7 6 5 4 3 2 1

D
C
B
A

D
C
B
A



TV-32" HDTV, ATYME
000167368 / 330096-01-000
PLATE-MNTNG, TV, 32" ATYME
000173701 / 332090-01-CHT
SCREW
OMG02U-04-012 (4)
WASHER
OME02U-04-071 (4)

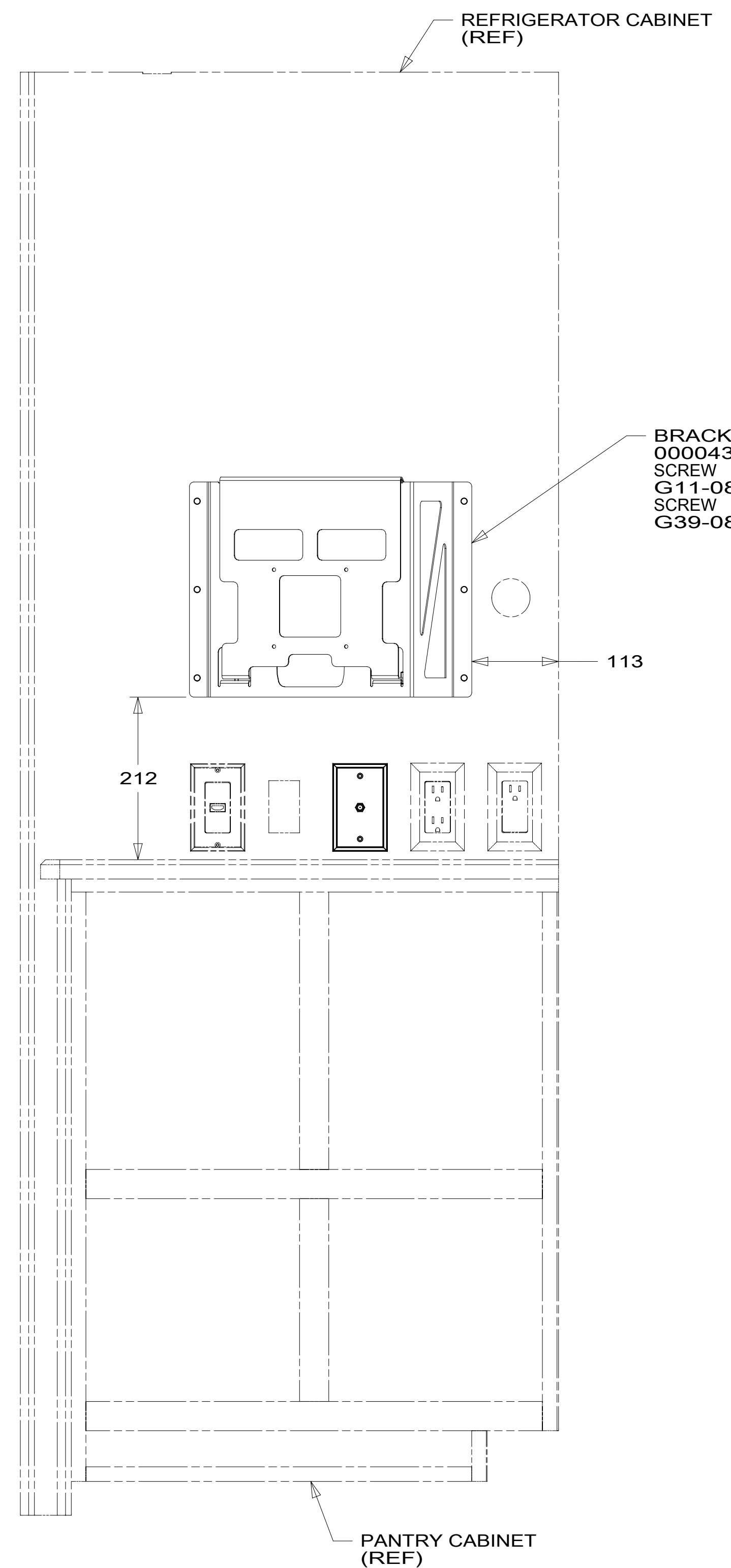
PLATE-WALL, SINGLE COAX
149557-13-CHT

HDMI PLATE
(REF)

RCP-2
(REF)

RCP-1
(REF)

PANTRY CABINET
(REF)



BRACKET-TV, 32" INSIGNIA
000043786 / 321108-01-CHT
SCREW
G11-08-16U (6)
SCREW
G39-08-08U (2)

113

212

PANTRY CABINET
(REF)

(TV NOT SHOWN)

2. ALL WIRES TO BE SECURED WITH CLAMP 10495-01-000 OR CLIP 80734-01-000 EVERY 600MM. USE SCREW G67-10-12U UNLESS OTHERWISE SPECIFIED.

1. WHERE WIRES PASS THROUGH HOLES IN STEEL AND NOT OTHERWISE PROTECTED, USE GROMMET 92908-02-000.

NOTES:

FOR ELECTRICAL TORQUE SPECIFICATIONS SEE DWG NO. 128783-01-000

FOR ELECTRICAL CALLOUTS SEE DWG NO. 121339-01-000

- 68Y TV - MAIN
- 265 CODES/STANDARDS-CSA/CMVSS
- 1B1 CODES/STANDARDS USA

1B1 265 68Y



DSNR:		ALL DIMENSIONS ARE IN MILLIMETERS	
DFFR:		MATERIAL:	
UNSPECIFIED TOLERANCES:			
WHOLE DIM (X)	± 3		
ONE-PLACE (X.X)	± 1.5		
TWO-PLACE (X.XX)	± 0.50		
ANGLE	± 1°		
REFER TO ES0018 FOR FASTENER TIGHTENING GUIDELINES		WEIGHT: (LBS)	FIRST USED:
			18 V26M

DESCRIPTION:
WIRING INSTL-TV/DVD

SHEET:	ITEM/PART NO.:	REV:
1 OF 4	000043021 / 32026301000	

8 7 6 5 4 3 2 1

8 7 6 5 4 3 2 1

TV-32" HDTV, ATYME
000167368 / 330096-01-000
SCREW
OMG02U-04-012 (4)
WASHER
OME02U-04-071 (4)

BRACKET-TV, 32", ATYME
000173564 / 332063-01-CHT
SCREW
G11-08-12U (5)
CLIP-TRIM
130034-08-CHT
SCREW
G11-08-12U (5)

PLATE-WALL, POWER SUPPLY
179004-02-CHT

15 160

(TV NOT SHOWN)

- NOTES:
- WHERE WIRES PASS THROUGH HOLES IN STEEL AND NOT OTHERWISE PROTECTED, USE GROMMET 92908-02-000.
 - ALL WIRES TO BE SECURED WITH CLAMP 10495-01-000 OR CLIP 80734-01-000 EVERY 600MM. USE SCREW G67-10-12U UNLESS OTHERWISE SPECIFIED.

FOR ELECTRICAL TORQUE SPECIFICATIONS SEE DWG NO. 128783-01-000

FOR ELECTRICAL CALLOUTS SEE DWG NO. 121339-01-000

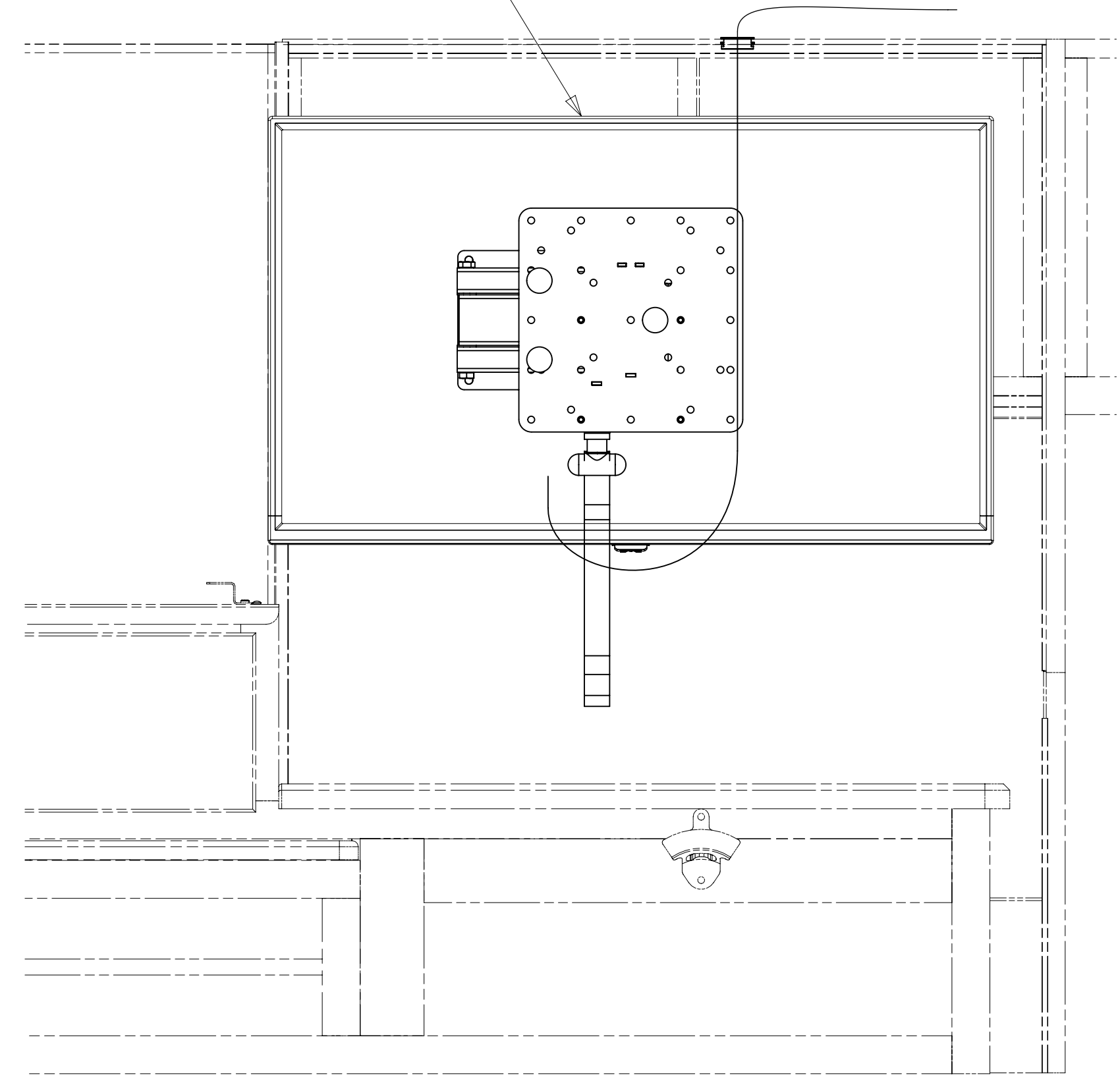
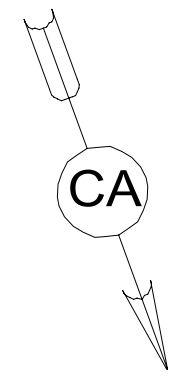
- 68X TV - BEDROOM
- 265 CODES/STANDARDS-CSA/CMVSS
- 1B1 CODES/STANDARDS USA

DESCRIPTION: WIRING INSTL-TV/DVD		
SHEET: 2 OF 4	ITEM/PART NO: 000043021 / 32026301000	REV

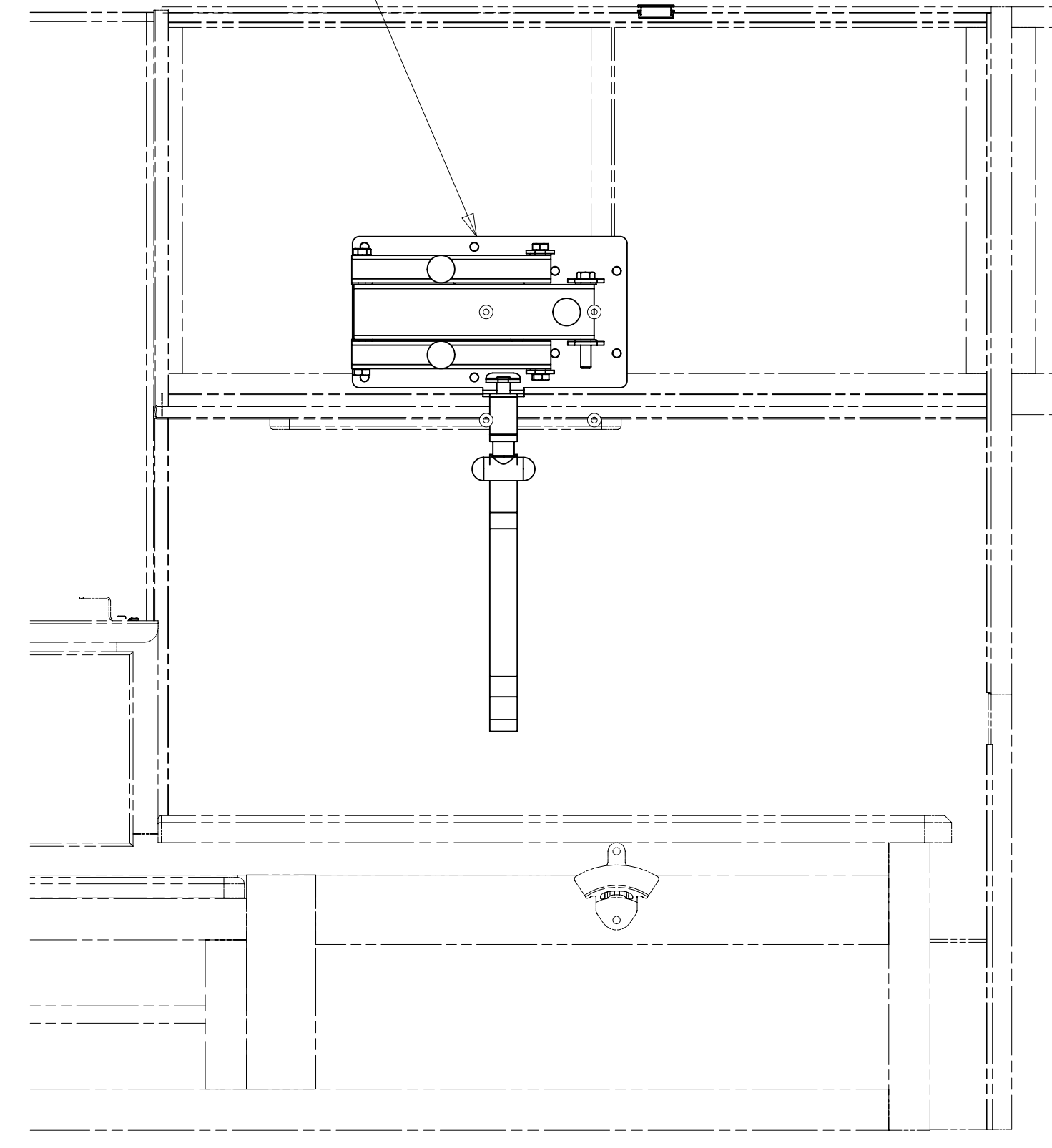
8 7 6 5 4 3 2 1 16-Jul-2019

8 7 6 5 4 3 2 1

TV-32" HDTV,ATYME
 000167368 / 330096-01-000
 PLATE-MNTNG,TV,32" INSIGNIA
 000127966 / 325048-01-CHT
 SCREW
 OMG02U-04-012 (4)
 WASHER
 000E13-10-00U (4)



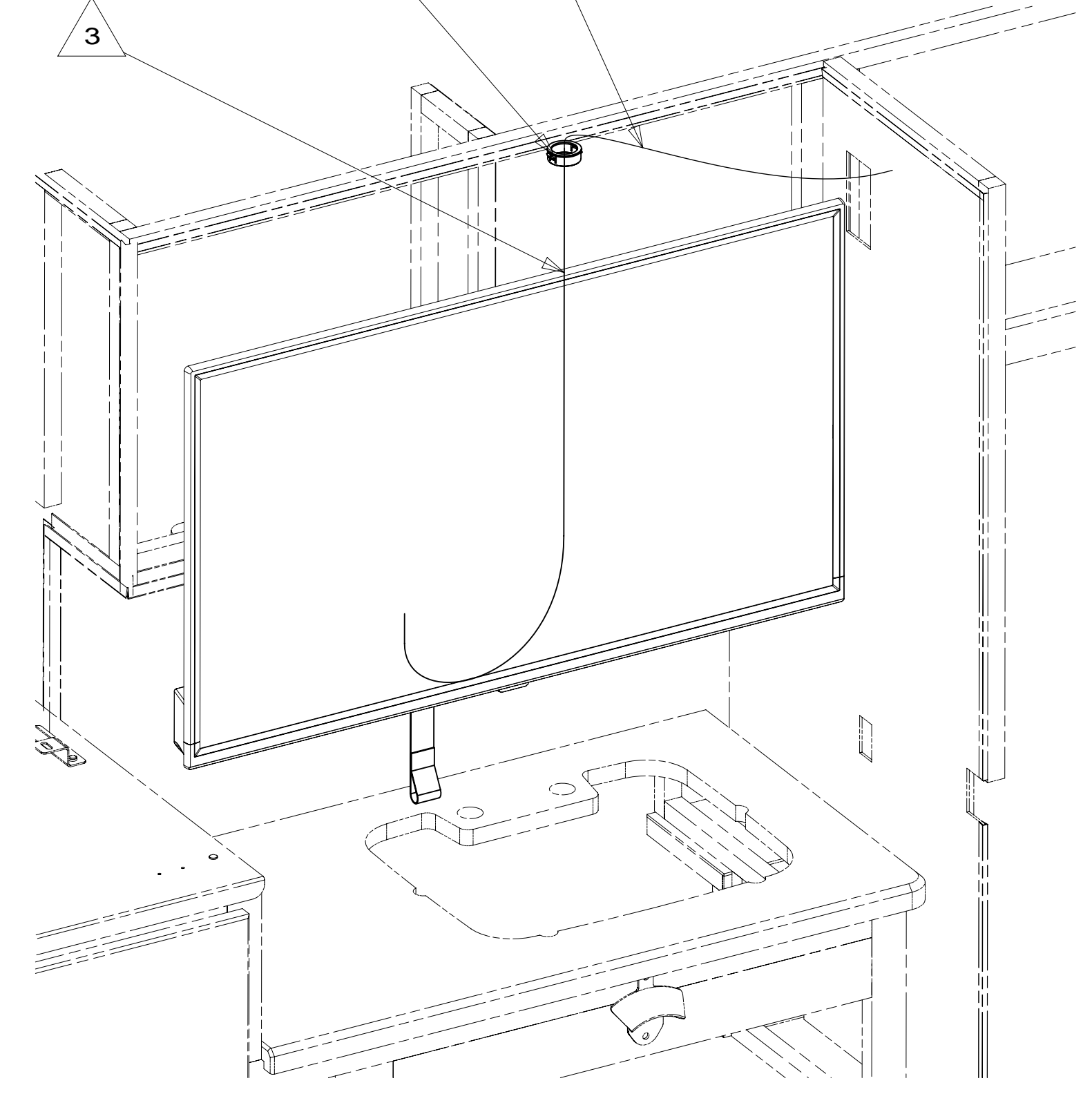
BRACKET-TV SWING MOUNT
 179241-01-CHT
 SCREW
 G11-08-12U (8)



(TV NOT SHOWN)

COAX (YEL)
 (REF)

GROMMET-EDGE LINER
 114208-07-000



VIEW CA

- 3 ROUTE COAX(YEL) AND TV POWER CORD TOGETHER, COVER WITH MINIMUM POSSIBLE DIAMETER BRAIDED SLEEVING 139049-01, -02, -03-000. SECURE BOTH ENDS WITH TAPE 8363-01-000. TIE CORDS TO TOP OF SWING ARM WITH TIE-WIRE 008343-03-000.
2. ALL WIRES TO BE SECURED WITH CLAMP 10495-01-000 OR CLIP 80734-01-000 EVERY 600MM. USE SCREW G67-10-12U UNLESS OTHERWISE SPECIFIED.
1. WHERE WIRES PASS THROUGH HOLES IN STEEL AND NOT OTHERWISE PROTECTED, USE GROMMET 92908-02-000.

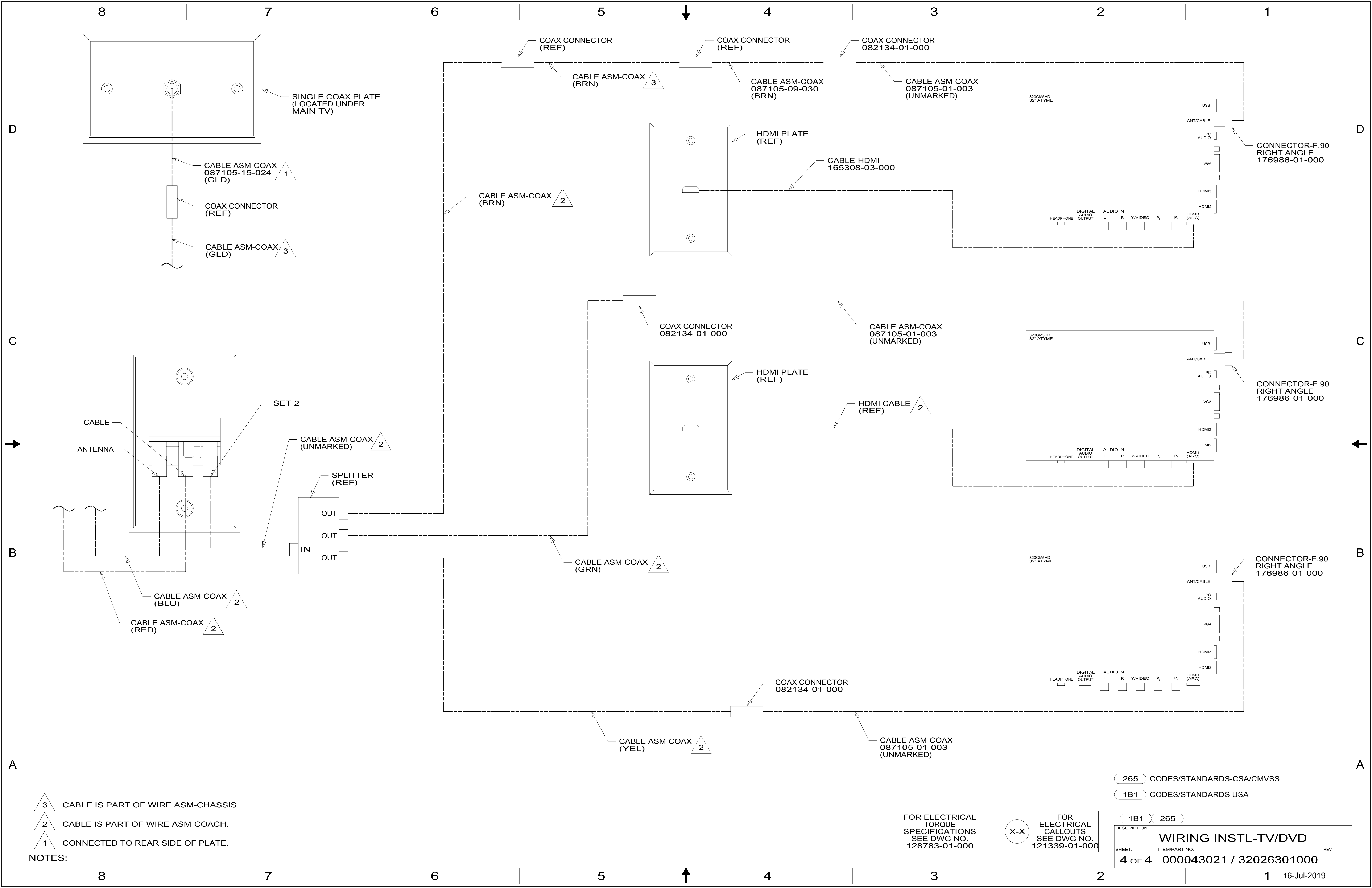
NOTES:

- 9PC TAILGATE PACKAGE
- 265 CODES/STANDARDS-CSA/CMVSS
- 1B1 CODES/STANDARDS USA

FOR ELECTRICAL TORQUE SPECIFICATIONS SEE DWG NO. 128783-01-000	X-X	FOR ELECTRICAL CALLOUTS SEE DWG NO. 121339-01-000
--	-----	---

DESCRIPTION:	WIRING INSTL-TV/DVD	
SHEET:	ITEM/PART NO:	REV
3 OF 4	000043021 / 32026301000	

8 7 6 5 4 3 2 1 16-Jul-2019



- 3 CABLE IS PART OF WIRE ASM-CHASSIS.
- 2 CABLE IS PART OF WIRE ASM-COACH.
- 1 CONNECTED TO REAR SIDE OF PLATE.

NOTES:

FOR ELECTRICAL TORQUE SPECIFICATIONS SEE DWG NO. 128783-01-000

FOR ELECTRICAL CALLOUTS SEE DWG NO. 121339-01-000

- 265 CODES/STANDARDS-CSA/CMVSS
- 1B1 CODES/STANDARDS USA

DESCRIPTION:		1B1 265	
WIRING INSTL-TV/DVD			
SHEET:	ITEM/PART NO.:	REV	
4 OF 4	000043021 / 32026301000		