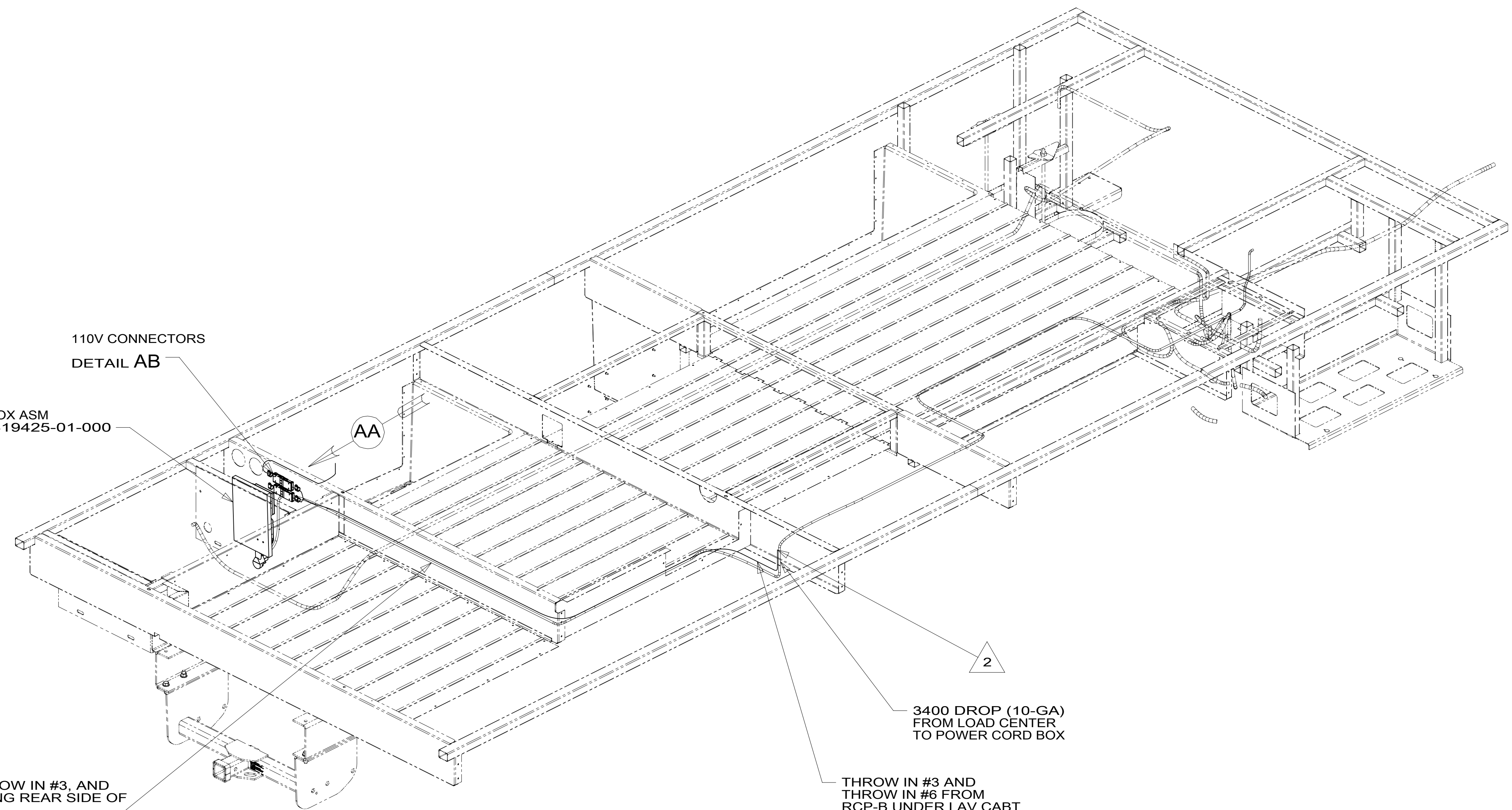


VIEW AA



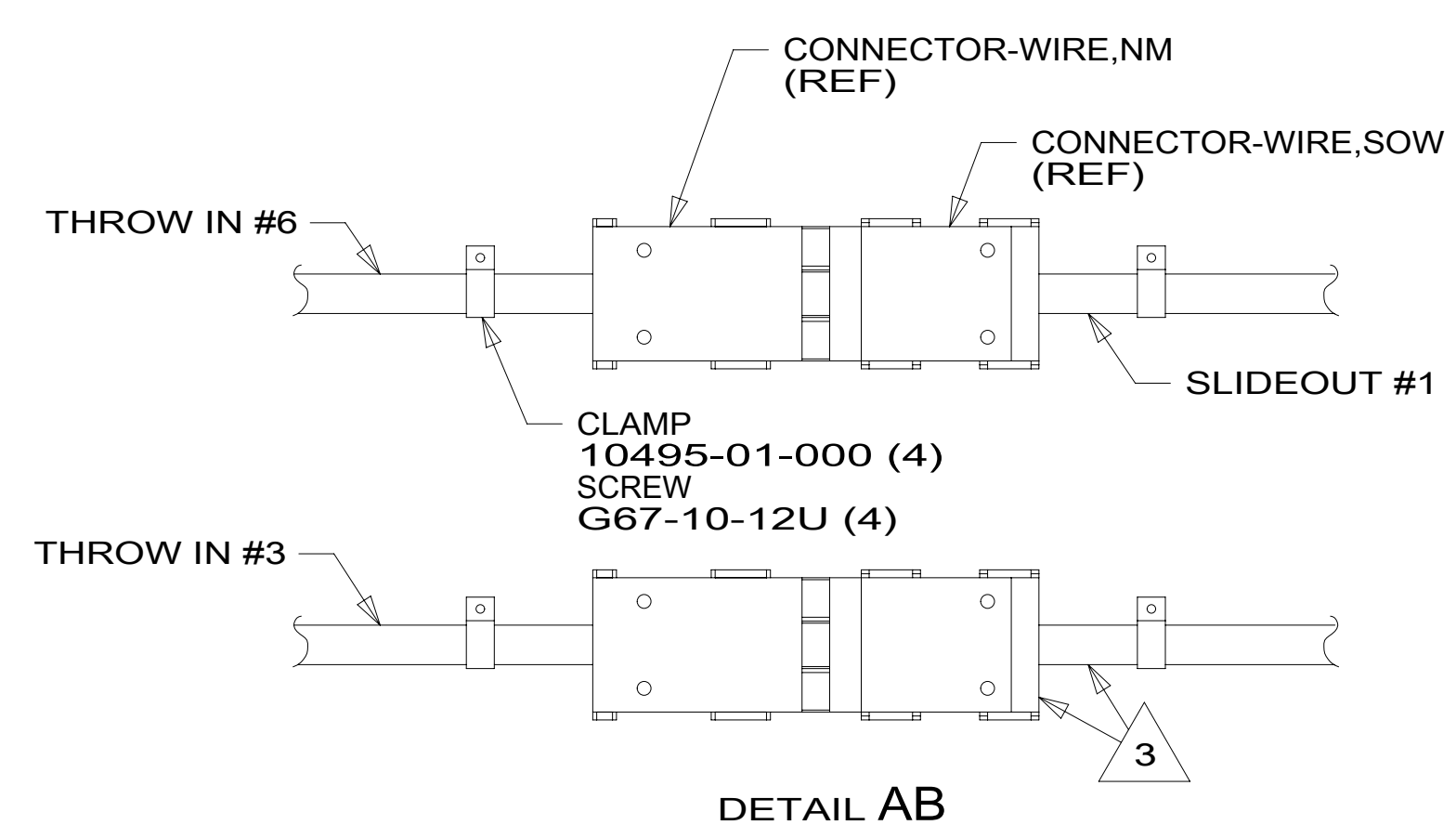
110V CONNECTORS
DETAIL AB

POWER CORD BOX ASM
000040479 / 319425-01-000

ROUTE MAIN, THROW IN #3, AND
THROW IN #6 ALONG REAR SIDE OF
DRAINAGE TANK

3400 DROP (10-GA)
FROM LOAD CENTER
TO POWER CORD BOX

THROW IN #3 AND
THROW IN #6 FROM
RCP-B UNDER LAV CABT
TO 110V CONNECTORS IN
REAR LEFT COMPARTMENT



DETAIL AB

FOR ELECTRICAL
TORQUE
SPECIFICATIONS
SEE DWG NO.
128783-01-000

FOR ELECTRICAL
CALLOUTS
SEE DWG NO.
121339-01-000

265 CODES/STANDARDS-CSA/CMVSS
1B1 CODES/STANDARDS USA

1B1 265



DSNR:	ALL DIMENSIONS ARE IN MILLIMETERS	
DFFR:	MATERIAL:	
UNSPECIFIED TOLERANCES:	WHOLE DIM (X) :	3
	ONE-PLACE (X.X) :	1.5
	TWO-PLACE (X.XX) :	0.50
	ANGLE :	1°
REFER TO ES0018 FOR FASTENER TIGHTENING GUIDELINES	WEIGHT: (LBS)	FIRST USED: 18 V26M

WIRING INSTL-BODY, 110V

SHEET:	ITEM/PART NO.:	REV
1 OF 8	000043019 / 32026201000	

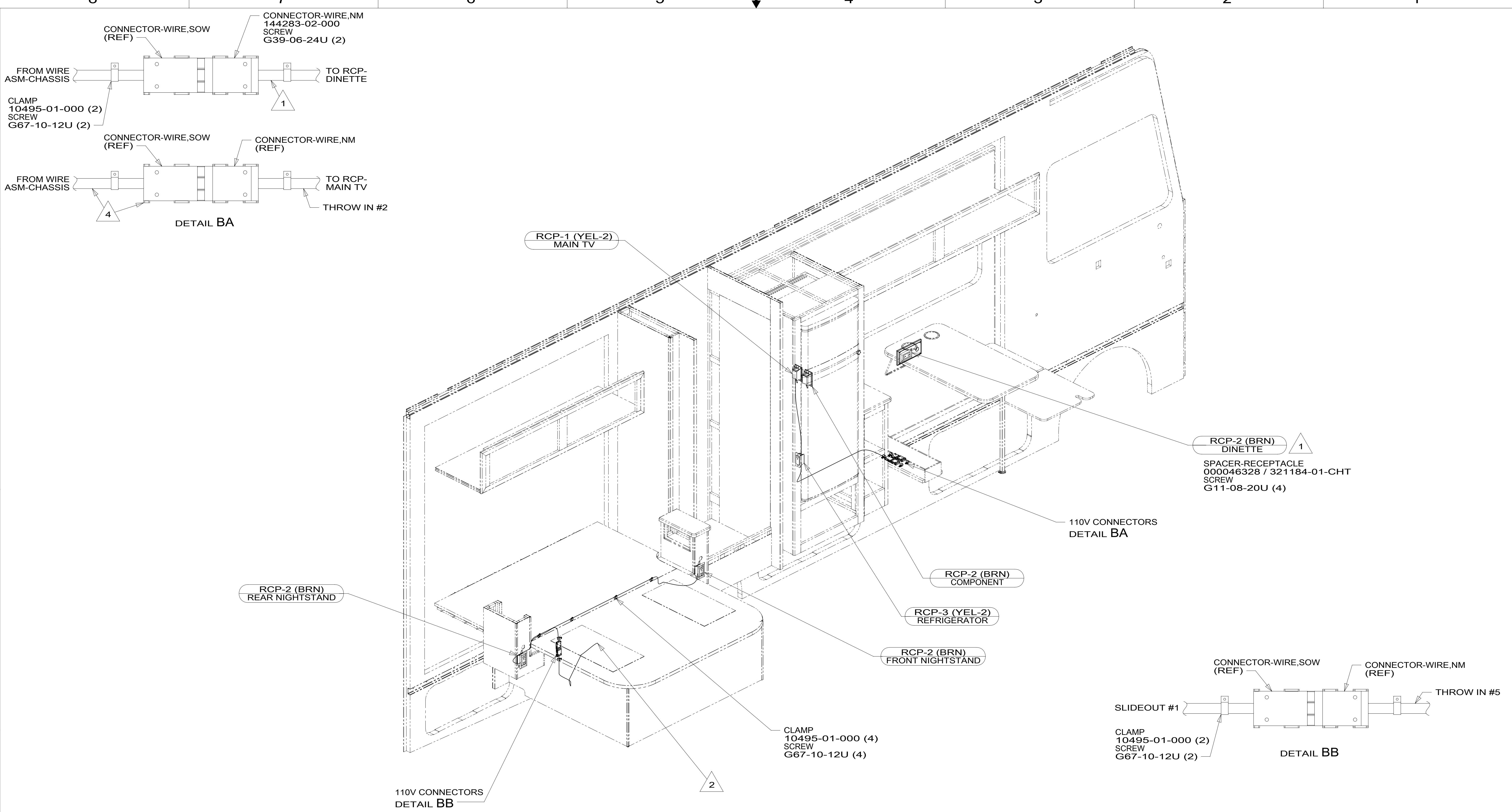
4. AT MINIMUM ALL WIRES TO BE SUPPORTED AND SECURED PER CODE REQUIREMENTS. USE CLAMP 10495 OR 10497 OR 083610 OR WIRE TIE 8343 OR 108046 AND SCREW G67-XX-XXX OR G56-XX-XXX AS APPROPRIATE FOR INSTALLATION.

3 CORD & CONNECTOR ARE PART OF WIRE ASM-CHASSIS.

2 WIRE ROUTES THROUGH FLOOR IN THIS AREA.

1. WIRES ROUTED UNDER FLOOR.

NOTES:



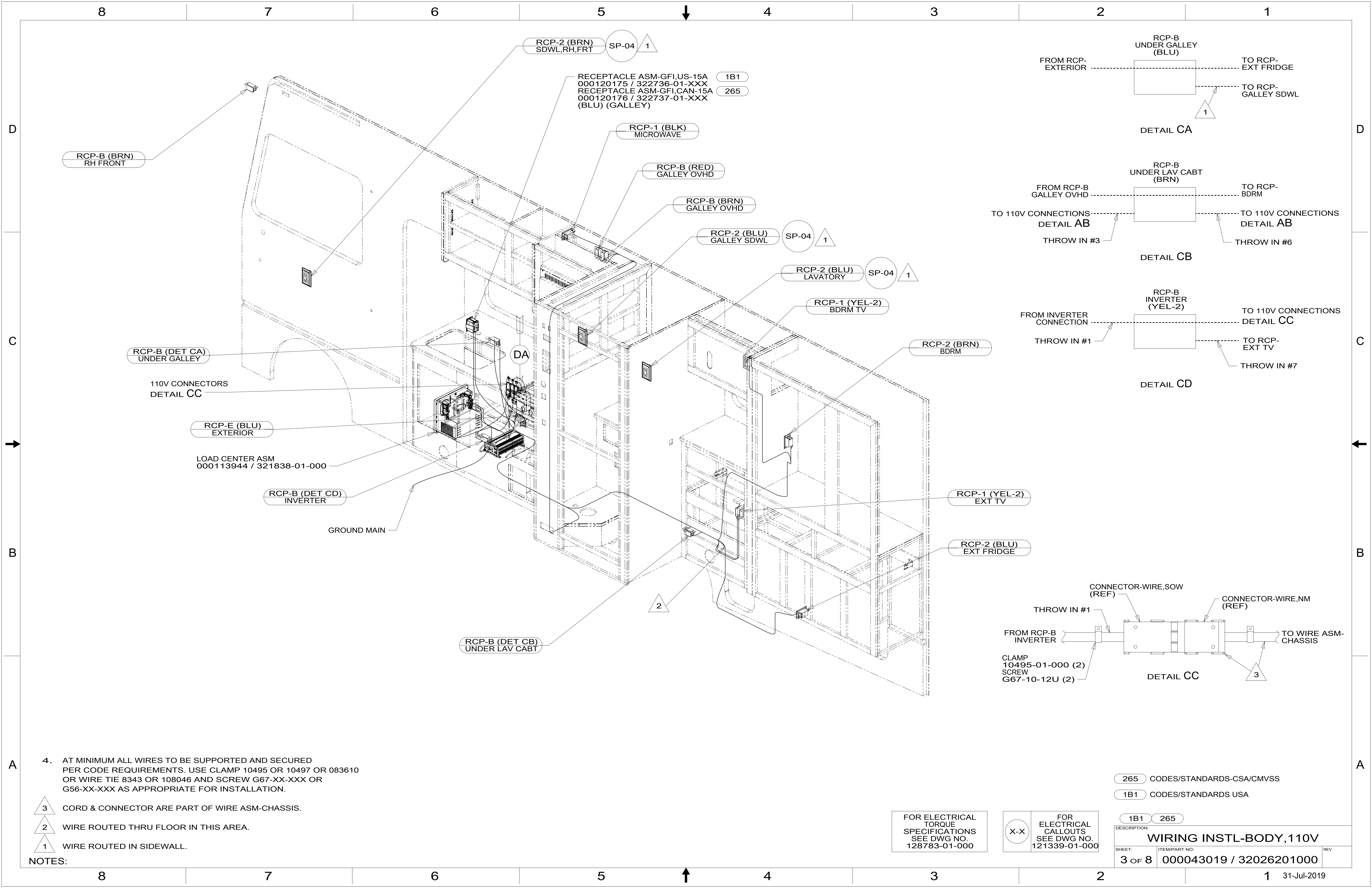
- NOTES:
- 4 CORD & CONNECTOR ARE PART OF WIRE ASM-CHASSIS.
 - 3. AT MINIMUM ALL WIRES TO BE SUPPORTED AND SECURED PER CODE REQUIREMENTS. USE CLAMP 10495 OR 10497 OR 083610 OR WIRE TIE 8343 OR 108046 AND SCREW G67-XX-XXX OR G56-XX-XXX AS APPROPRIATE FOR INSTALLATION.
 - 2 WIRE ROUTED THRU FLOOR IN THIS AREA.
 - 1 WIRE ROUTED IN SIDEWALL.

FOR ELECTRICAL TORQUE SPECIFICATIONS SEE DWG NO. 128783-01-000

FOR ELECTRICAL CALLOUTS SEE DWG NO. 121339-01-000

- 265 CODES/STANDARDS-CSA/CMVSS
- 1B1 CODES/STANDARDS USA

DESCRIPTION:		1B1	265
WIRING INSTL-BODY, 110V			
SHEET:	ITEM/PART NO.:	REV	
2 OF 8	000043019 / 32026201000		



RCP-B (BRN)
RH FRONT

RCP-2 (BRN)
SDWL,RH,FRT SP-04 1

RECEPTACLE ASM-GFI,US-15A
000120175 / 322736-01-XXX 1B1
RECEPTACLE ASM-GFI,CAN-15A
000120176 / 322737-01-XXX 265
(BLU) (GALLEY)

RCP-1 (BLK)
MICROWAVE

RCP-B (RED)
GALLEY OVHD

RCP-B (BRN)
GALLEY OVHD

RCP-2 (BLU)
GALLEY SDWL SP-04 1

RCP-2 (BLU)
LAVATORY SP-04 1

RCP-1 (YEL-2)
BDRM TV

RCP-2 (BRN)
BDRM

RCP-B (DET CA)
UNDER GALLEY

110V CONNECTORS
DETAIL CC

RCP-E (BLU)
EXTERIOR

LOAD CENTER ASM
000113944 / 321838-01-000

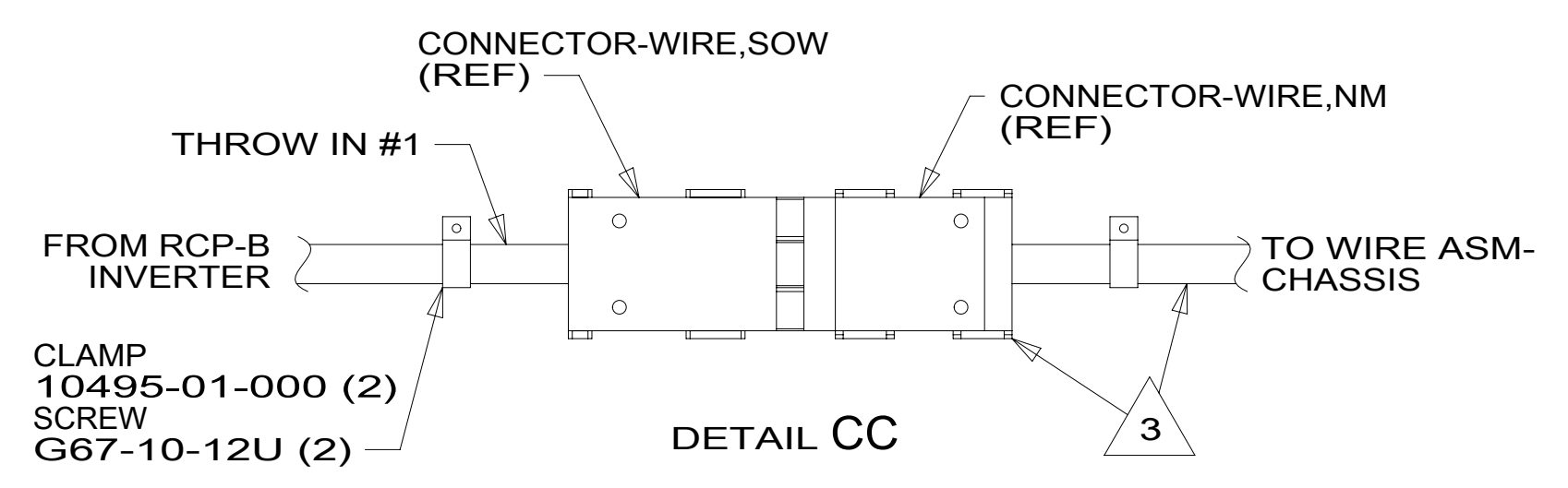
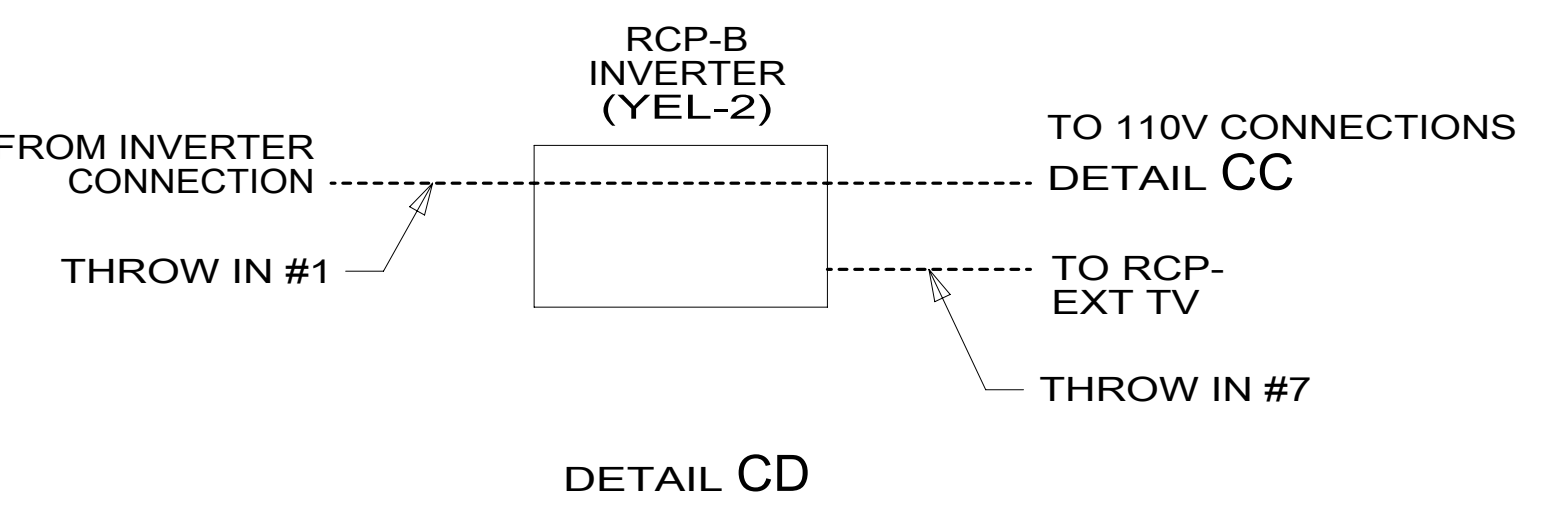
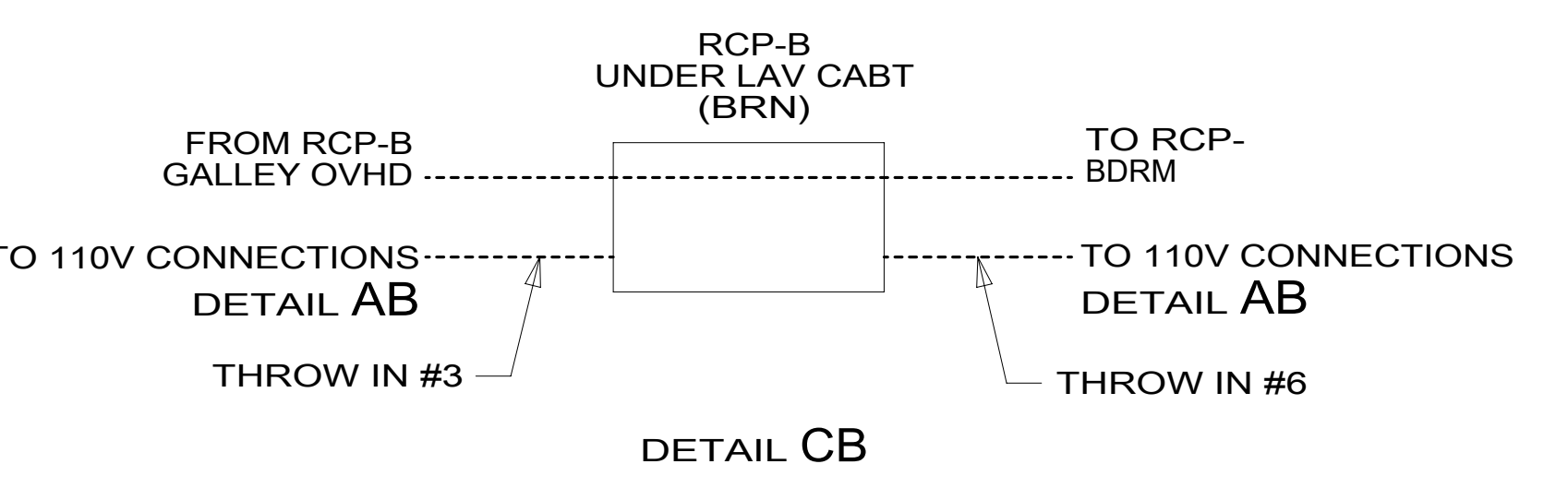
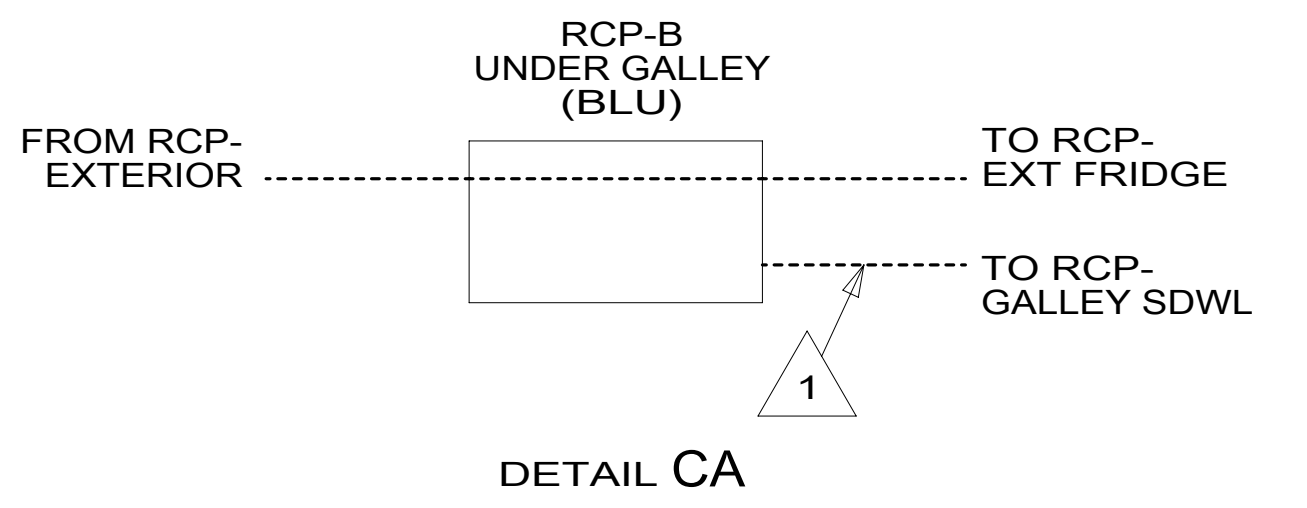
RCP-B (DET CD)
INVERTER

GROUND MAIN

RCP-B (DET CB)
UNDER LAV CABT

RCP-1 (YEL-2)
EXT TV

RCP-2 (BLU)
EXT FRIDGE



4. AT MINIMUM ALL WIRES TO BE SUPPORTED AND SECURED PER CODE REQUIREMENTS. USE CLAMP 10495 OR 10497 OR 083610 OR WIRE TIE 8343 OR 108046 AND SCREW G67-XX-XXX OR G56-XX-XXX AS APPROPRIATE FOR INSTALLATION.

- 3 CORD & CONNECTOR ARE PART OF WIRE ASM-CHASSIS.
- 2 WIRE ROUTED THRU FLOOR IN THIS AREA.
- 1 WIRE ROUTED IN SIDEWALL.

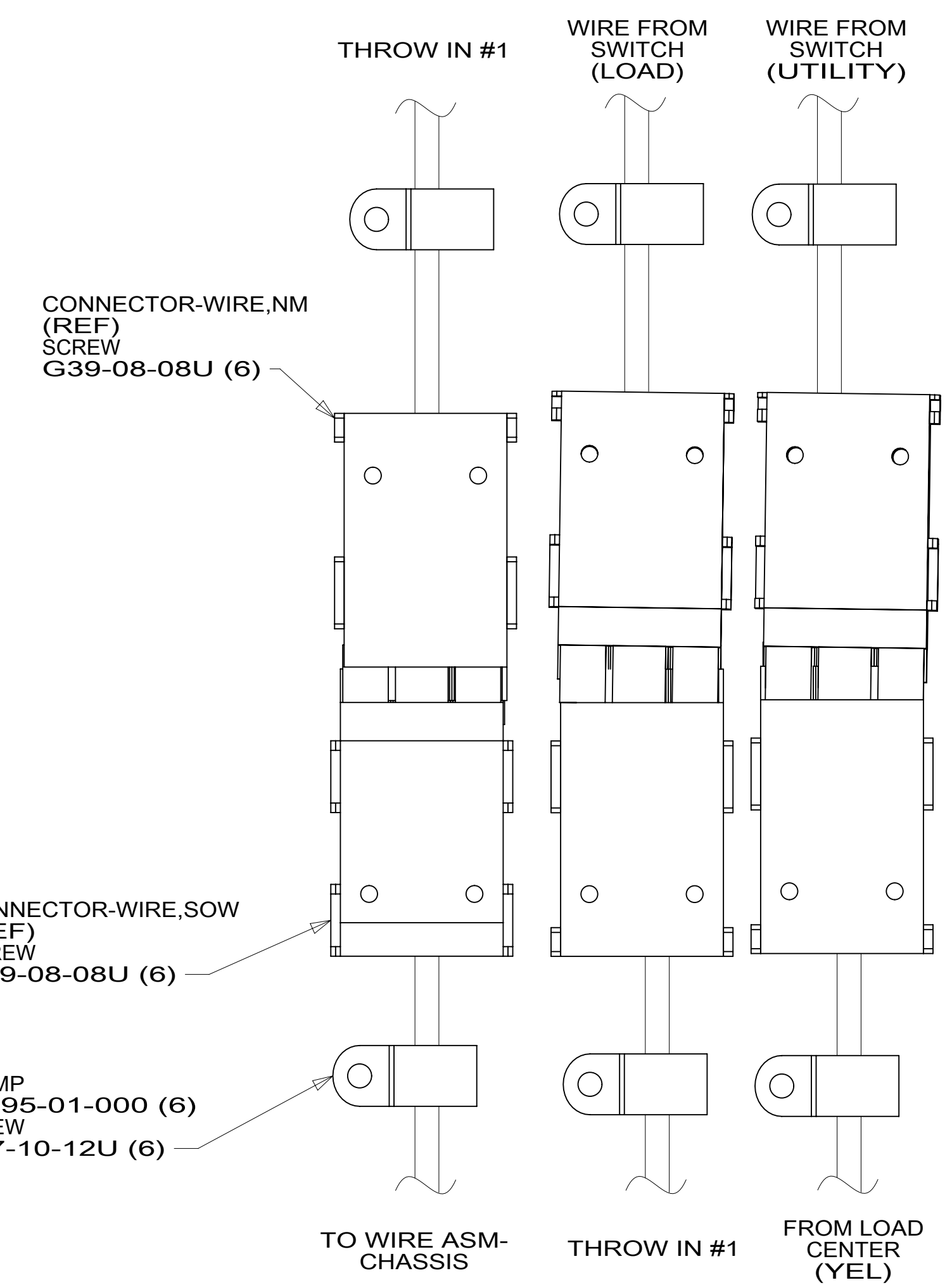
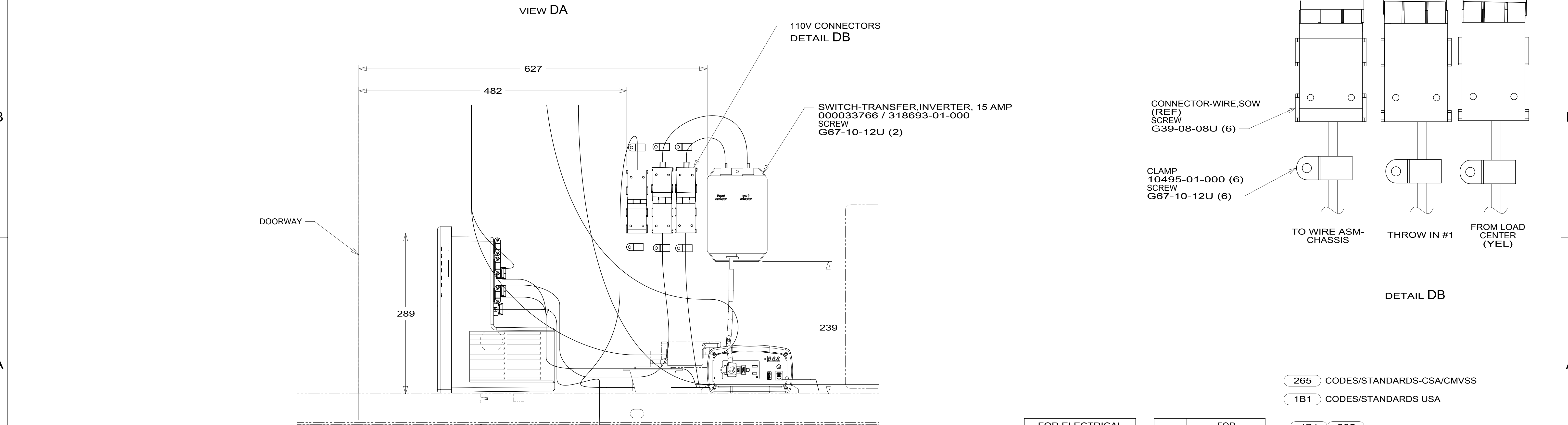
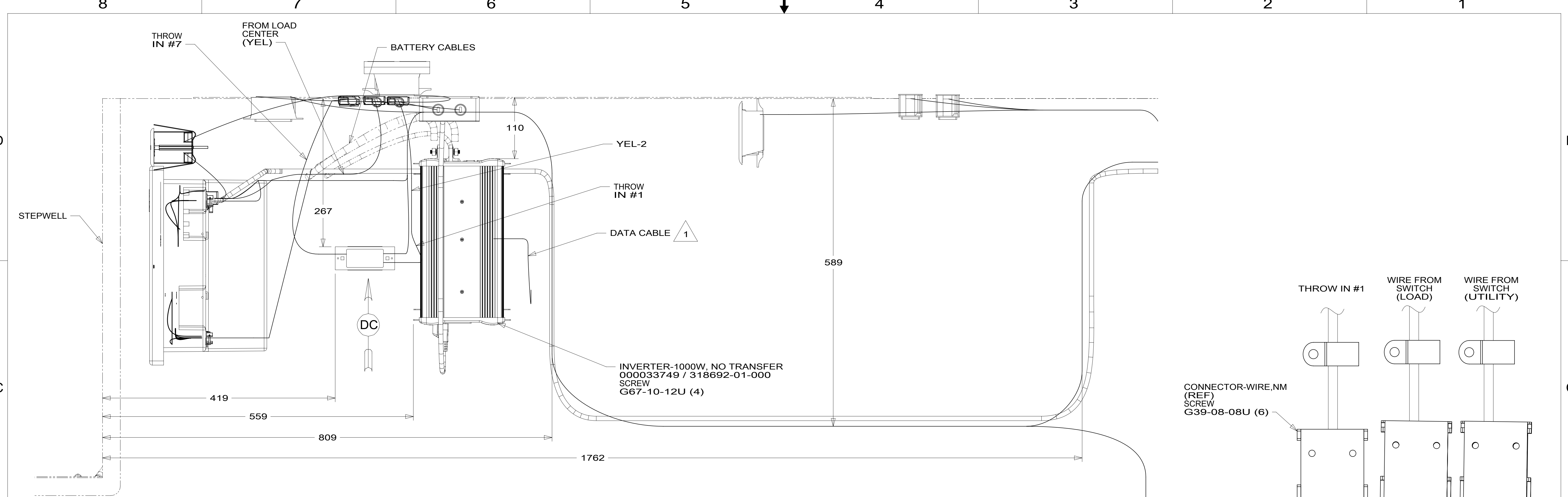
NOTES:

265 CODES/STANDARDS-CSA/CMVSS
1B1 CODES/STANDARDS USA

FOR ELECTRICAL TORQUE SPECIFICATIONS SEE DWG NO. 128783-01-000

FOR ELECTRICAL CALLOUTS SEE DWG NO. 121339-01-000

DESCRIPTION: WIRING INSTL-BODY, 110V		
SHEET: 3 OF 8	ITEM/PART NO: 000043019 / 32026201000	REV



1 DATA CABLE PART OF WIRE ASM-COACH.

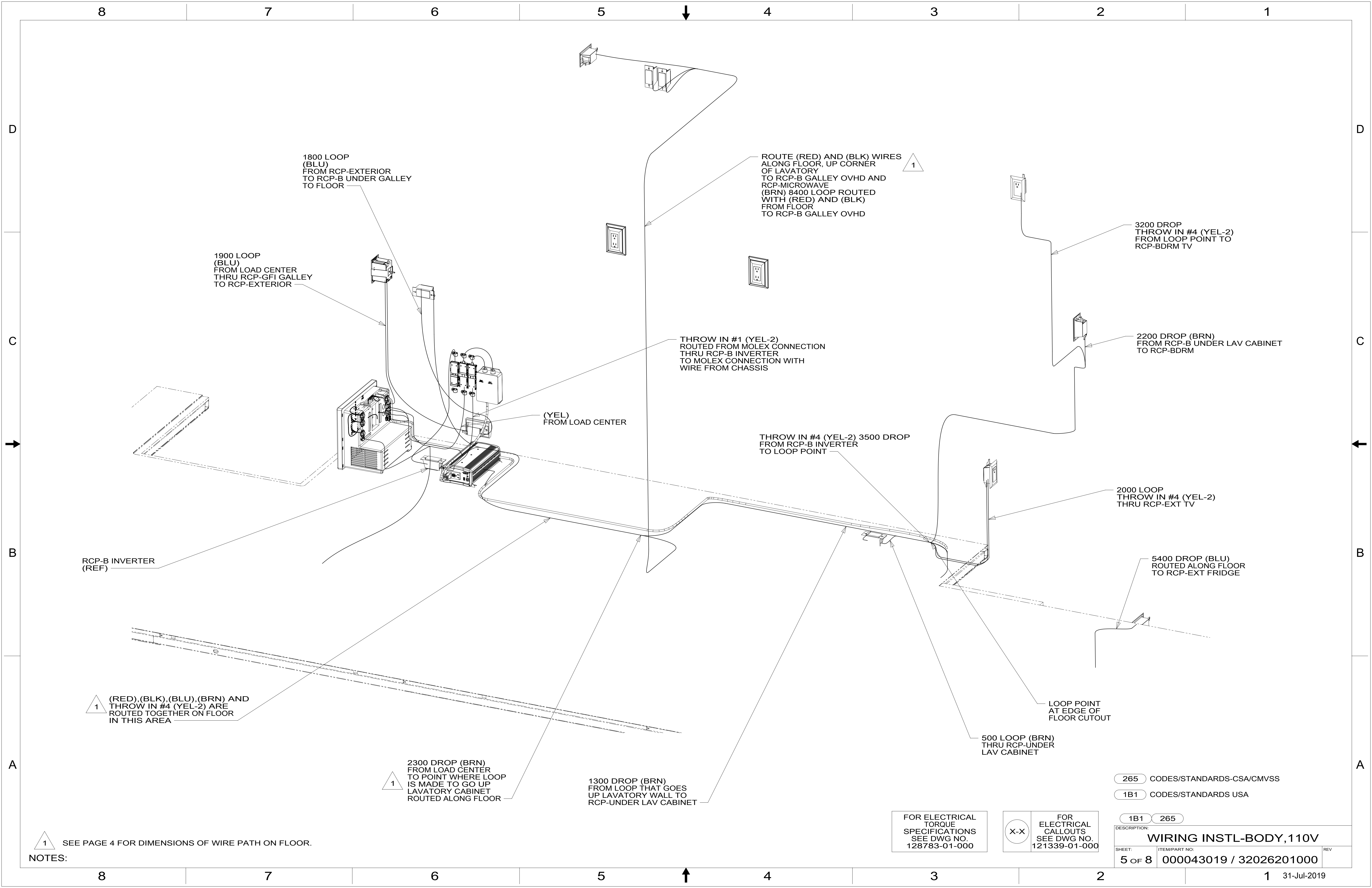
NOTES:

FOR ELECTRICAL TORQUE SPECIFICATIONS SEE DWG NO. 128783-01-000

FOR ELECTRICAL CALLOUTS SEE DWG NO. 121339-01-000

- 265 CODES/STANDARDS-CSA/CMVSS
- 1B1 CODES/STANDARDS USA

DESCRIPTION:		1B1	265
WIRING INSTL-BODY, 110V			
SHEET:	ITEM/PART NO.:	REV	
4 OF 8	000043019 / 32026201000		



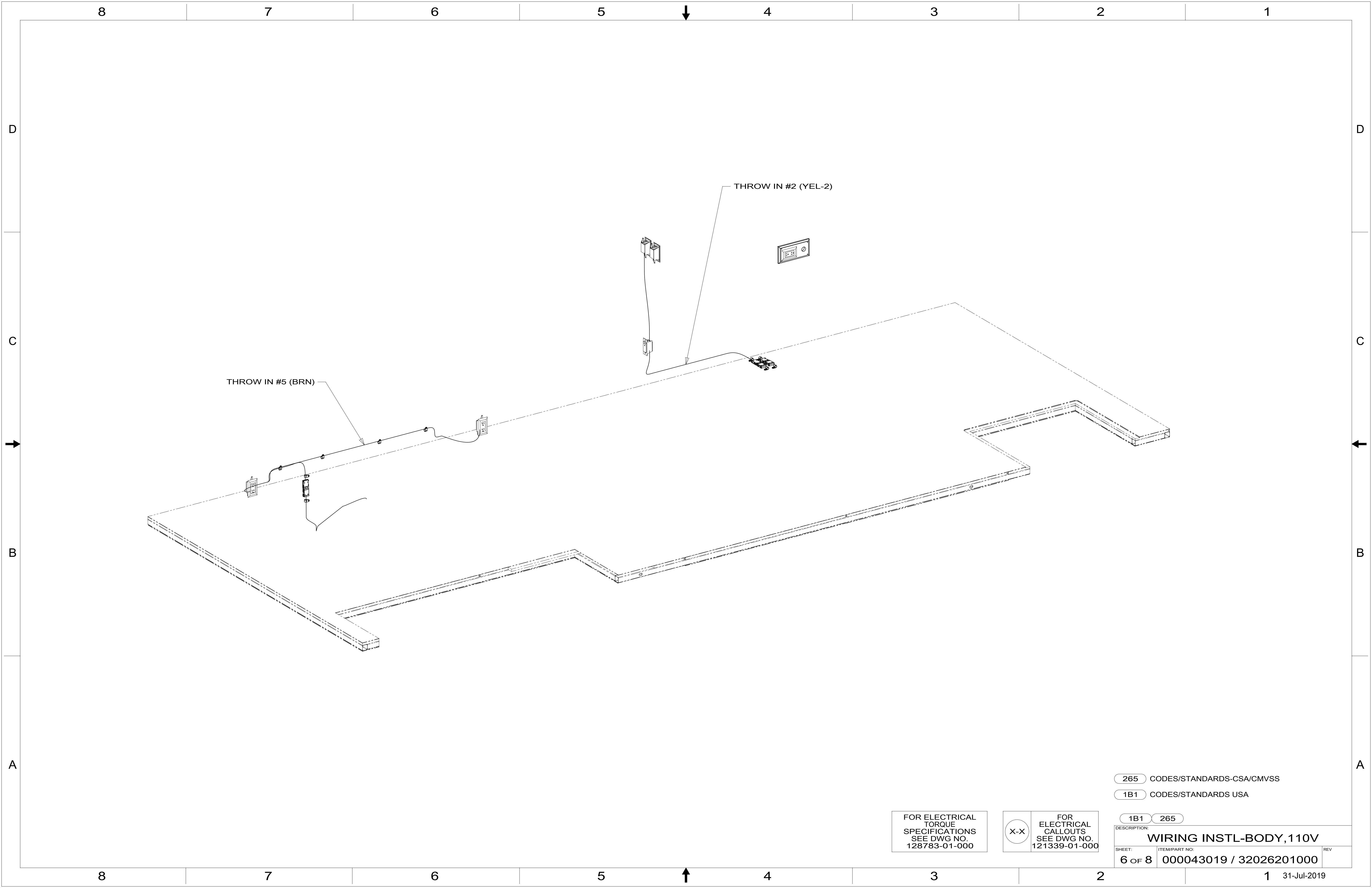
1 SEE PAGE 4 FOR DIMENSIONS OF WIRE PATH ON FLOOR.
 NOTES:

FOR ELECTRICAL TORQUE SPECIFICATIONS SEE DWG NO. 128783-01-000

FOR ELECTRICAL CALLOUTS SPECIFICATIONS SEE DWG NO. 121339-01-000

- 265 CODES/STANDARDS-CSA/CMVSS
- 1B1 CODES/STANDARDS USA

DESCRIPTION: WIRING INSTL-BODY, 110V		
SHEET: 5 OF 8	ITEM/PART NO: 000043019 / 32026201000	REV



THROW IN #5 (BRN)

THROW IN #2 (YEL-2)

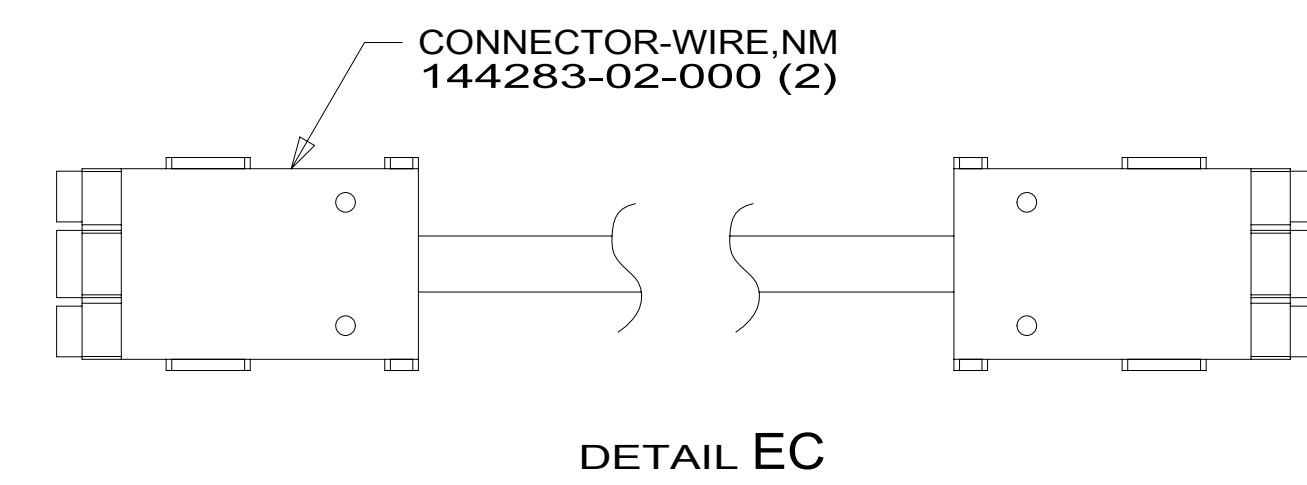
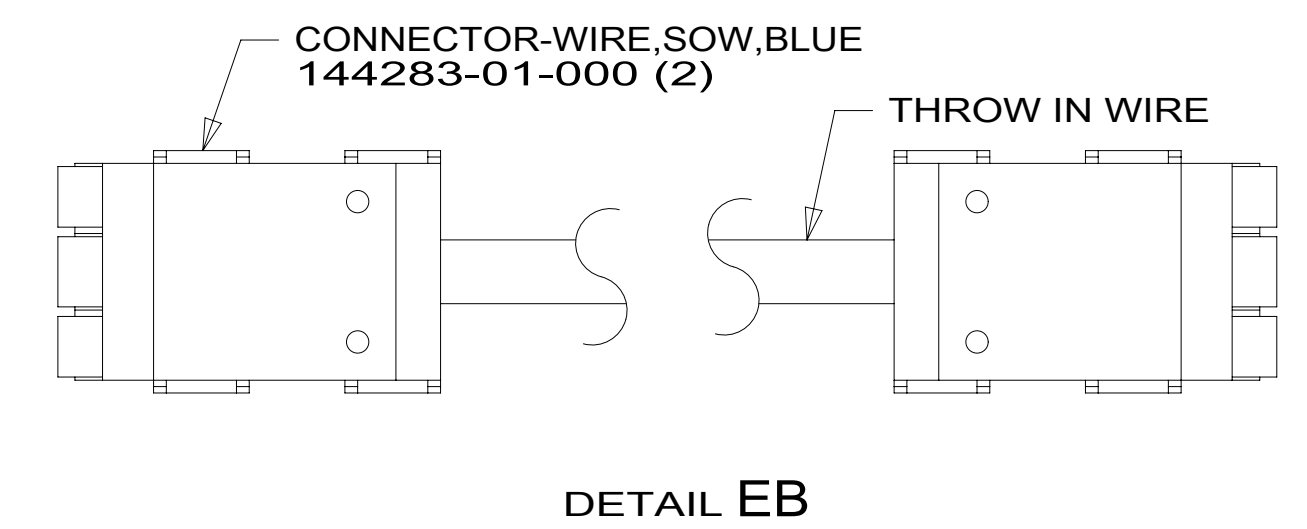
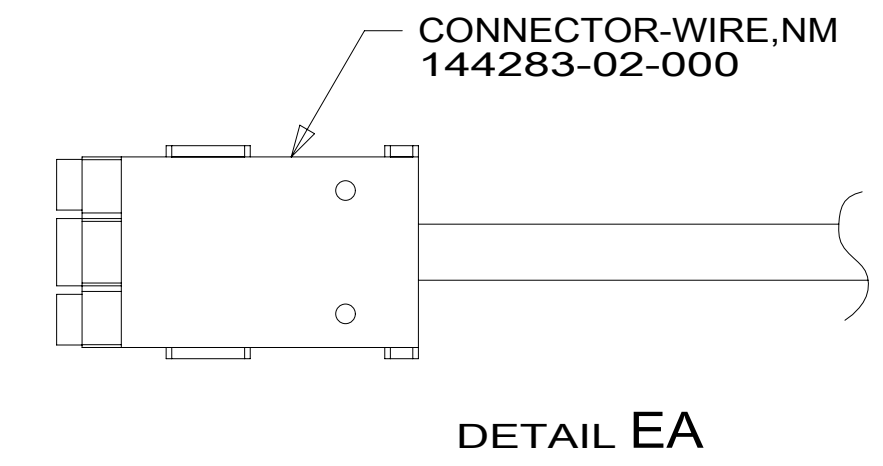
FOR ELECTRICAL TORQUE SPECIFICATIONS SEE DWG NO. 128783-01-000

FOR ELECTRICAL CALLOUTS SEE DWG NO. 121339-01-000

- 265 CODES/STANDARDS-CSA/CMVSS
- 1B1 CODES/STANDARDS USA

DESCRIPTION:	
WIRING INSTL-BODY, 110V	
SHEET:	ITEM/PART NO. REV
6 OF 8	000043019 / 32026201000

RED	1B1	136135-07-069
	265	136136-07-069
YEL	1B1	136131-05-011 ³
	265	136134-05-011 ³
BRN	1B1	136131-03-151
	265	136134-03-151
BLU	1B1	136131-02-095
	265	136134-02-095
MAIN	1B1	136137-01-076 ⁶
	265	136138-01-076 ⁶
BLK	1B1	136131-06-069
	265	136134-06-069
THROW IN WIRE #1	1B1	136131-13-015 ⁵
	265	136134-13-015 ⁵
THROW IN WIRE #2	1B1	136131-13-021 ³
	265	136134-13-021 ³
THROW IN WIRE #3	1B1	136131-03-036 ³
	265	136134-03-036 ³
THROW IN WIRE #4	1B1	136131-13-084
	265	136134-13-084
THROW IN WIRE #5	1B1	136131-03-035 ³
	265	136134-03-035 ³
THROW IN WIRE #6	1B1	136131-03-036 ³
	265	136134-03-036 ³
SLIDEOUT #1		136151-03-016 ⁴
GROUND MAIN		178545-01-016



⁶ ATTACH ONE END OF MAIN TO LOAD CENTER. COVER OTHER END OF MAIN CABLE ASM WITH 850 MM OF CONDUIT 091234-02-000. SECURE WITH TAPE 8363-01-000.

⁵ SEE DETAIL EC FOR CONNECTOR INSTALLATION.

⁴ SEE DETAIL EB FOR CONNECTOR INSTALLATION.

³ SEE DETAIL EA FOR CONNECTOR INSTALLATION.

2. SECURE WIRES TO BACKSIDE OF LOAD CENTER WITH WIRE TIE 116673-01-000.

1. ALL GROUNDS WIRES TO BE COVERED WITH TUBING 8041-02-000.

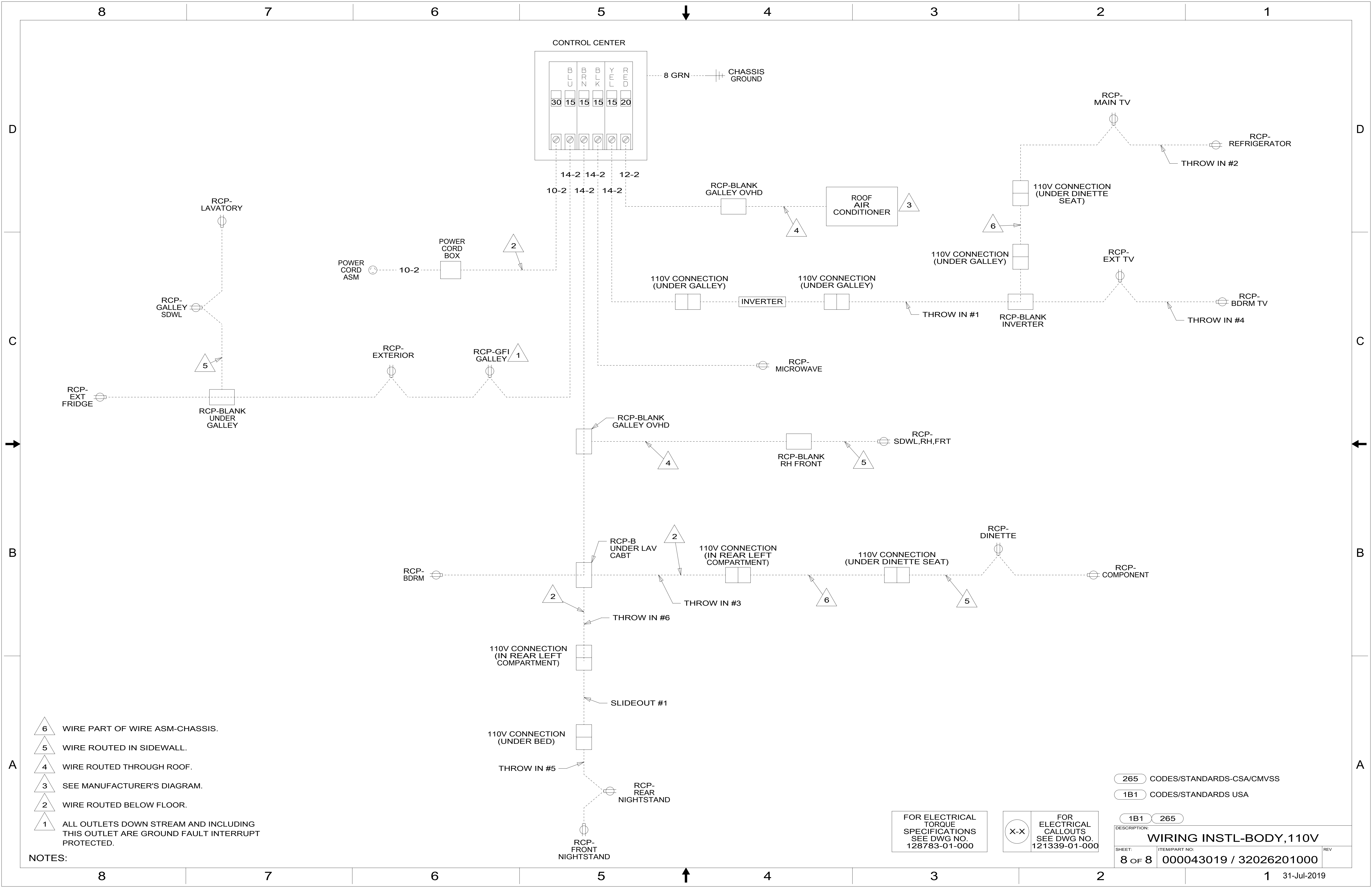
NOTES:

265 CODES/STANDARDS-CSA/CMVSS
1B1 CODES/STANDARDS USA

FOR ELECTRICAL TORQUE SPECIFICATIONS SEE DWG NO. 128783-01-000

FOR ELECTRICAL CALLOUTS SEE DWG NO. 121339-01-000

1B1	265
DESCRIPTION: WIRING INSTL-BODY, 110V	
SHEET: 7 OF 8	ITEM/PART NO: 000043019 / 32026201000
REV	



- NOTES:
- 6 WIRE PART OF WIRE ASM-CHASSIS.
 - 5 WIRE ROUTED IN SIDEWALL.
 - 4 WIRE ROUTED THROUGH ROOF.
 - 3 SEE MANUFACTURER'S DIAGRAM.
 - 2 WIRE ROUTED BELOW FLOOR.
 - 1 ALL OUTLETS DOWN STREAM AND INCLUDING THIS OUTLET ARE GROUND FAULT INTERRUPT PROTECTED.

FOR ELECTRICAL TORQUE SPECIFICATIONS SEE DWG NO. 128783-01-000

FOR ELECTRICAL CALLOUTS SEE DWG NO. 121339-01-000

- 265 CODES/STANDARDS-CSA/CMVSS
- 1B1 CODES/STANDARDS USA

DESCRIPTION: WIRING INSTL-BODY, 110V		
SHEET: 8 OF 8	ITEM/PART NO: 000043019 / 32026201000	REV