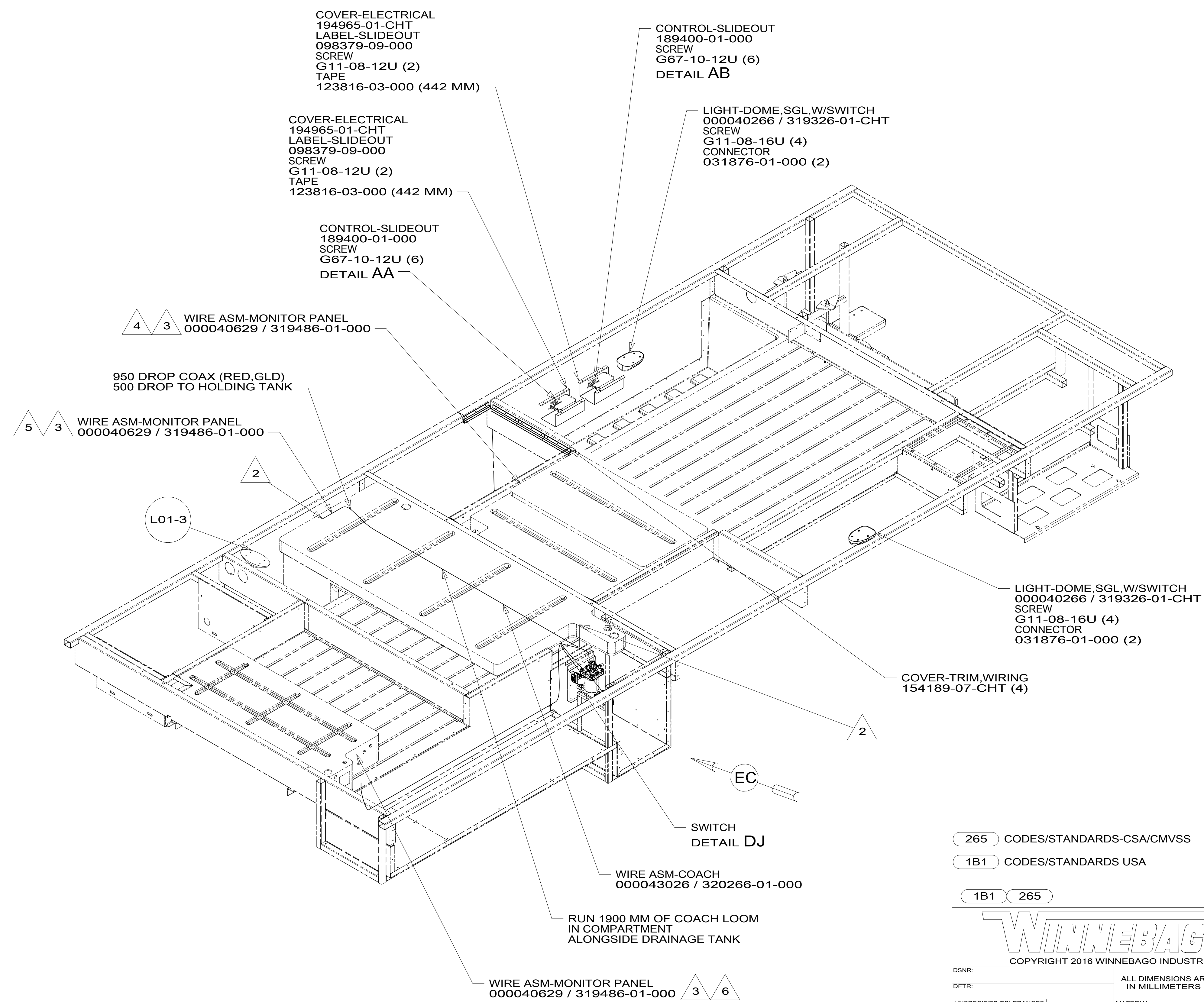
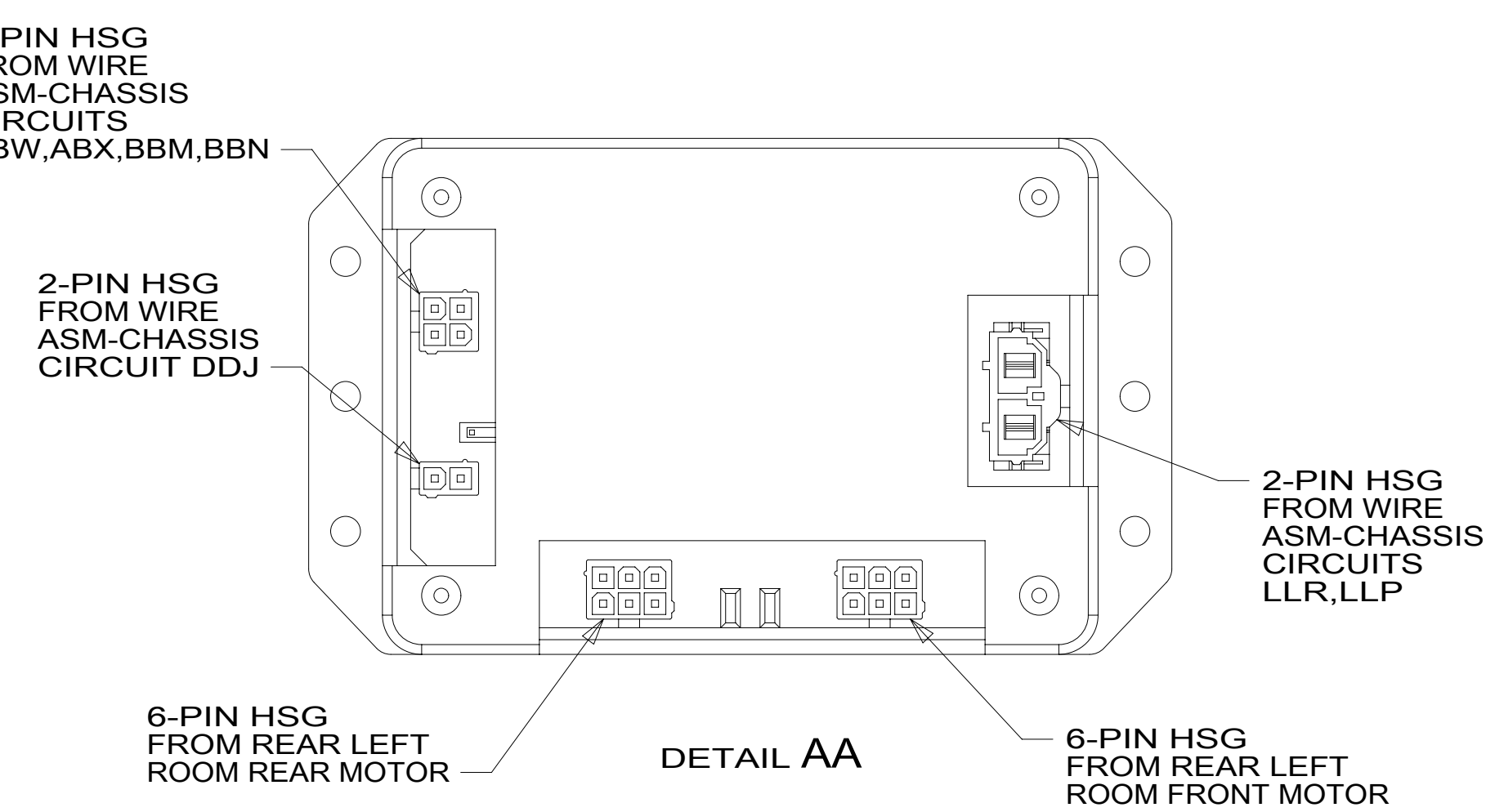
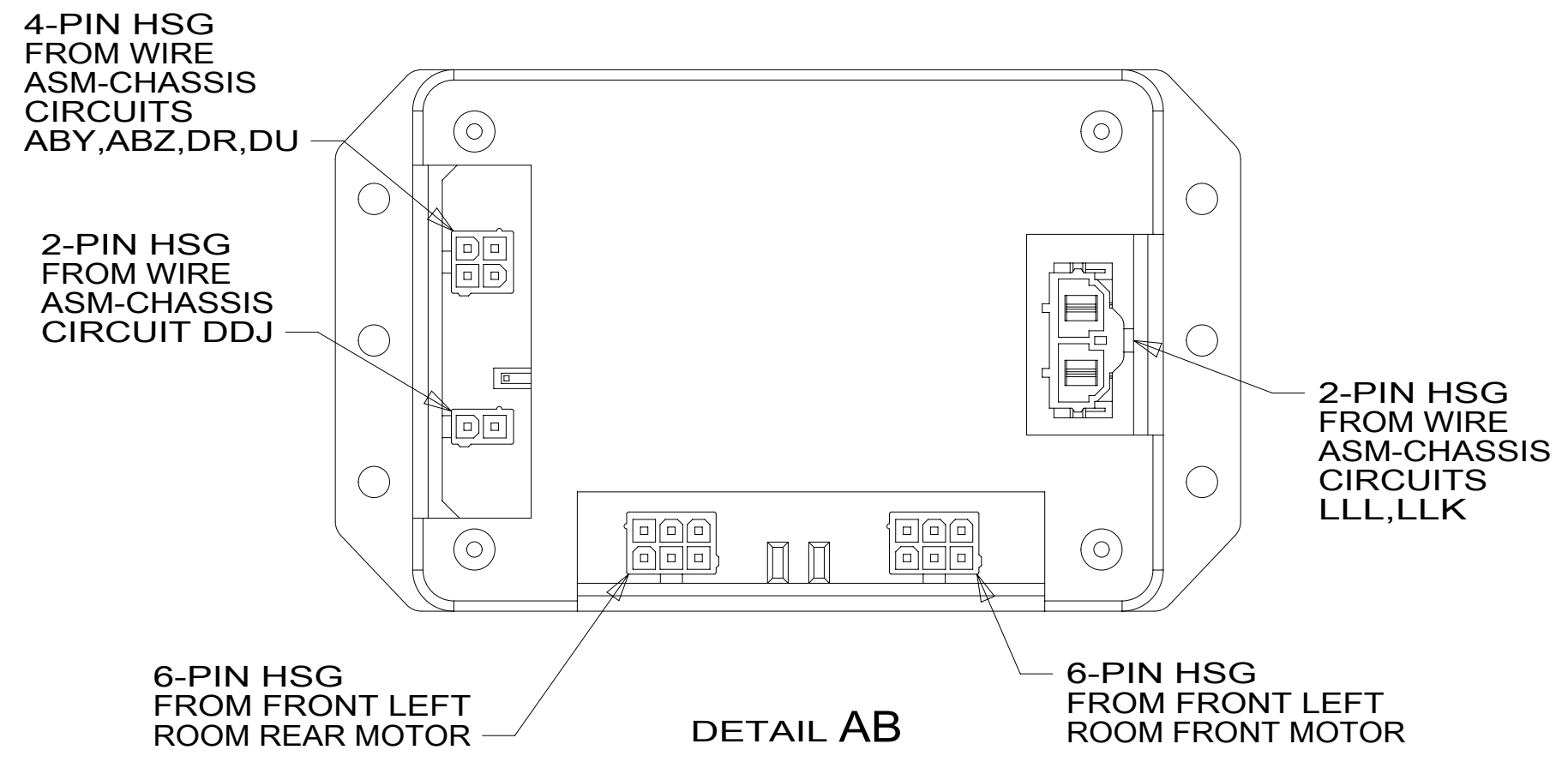


8 7 6 5 4 3 2 1



- 6 MARK WIRES WITH WRAP OF RED TAPE.
- 5 MARK WIRES WITH WRAP OF ORG TAPE.
- 4 MARK WIRES WITH WRAP OF BLU TAPE.
- 3 SEE DETAIL EA FOR CONNECTION TO SENSOR PROBES.
- 2 WIRE PASSES THROUGH FLOOR IN THIS AREA.

1. AT MINIMUM ALL WIRES TO BE SUPPORTED AND SECURED PER CODE REQUIREMENTS. USE CLAMP 10495 OR 10497 OR 083610 OR WIRE TIE 8343 OR 108046 AND SCREW G67-XX-XXX OR G56-XX-XXX AS APPROPRIATE FOR INSTALLATION.

NOTES:

FOR ELECTRICAL TORQUE SPECIFICATIONS SEE DWG NO. 128783-01-000

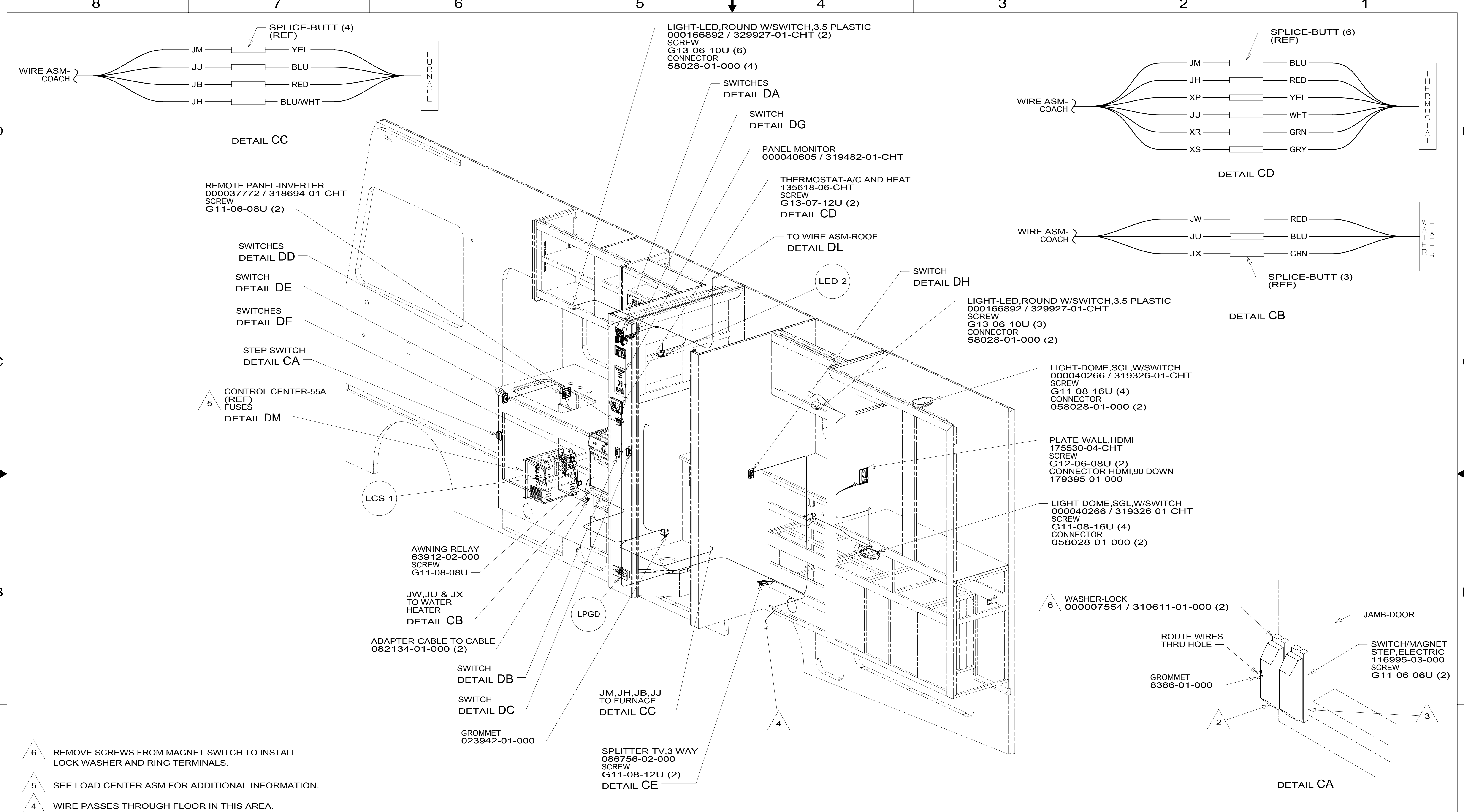
FOR ELECTRICAL CALLOUTS SEE DWG NO. 121339-01-000

- 265 CODES/STANDARDS-CSA/CMVSS
- 1B1 CODES/STANDARDS USA
- 1B1 265

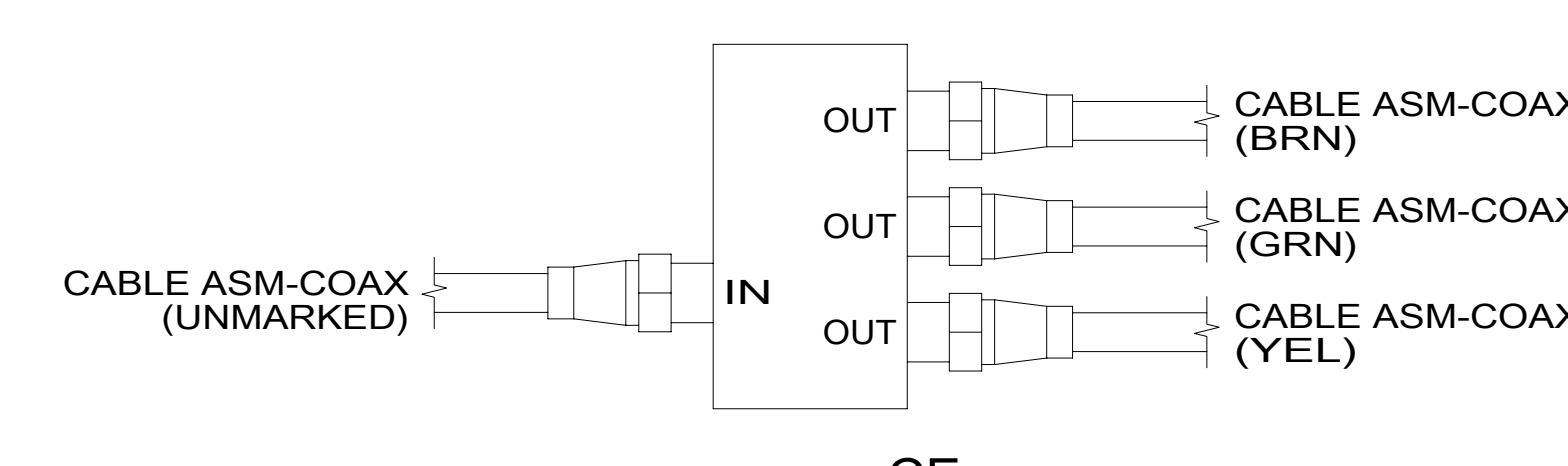
WINNEBAGO
COPYRIGHT 2016 WINNEBAGO INDUSTRIES, INC.

| | |
|--|---------------------------------------|
| DSNR: | ALL DIMENSIONS ARE IN MILLIMETERS |
| DFFR: | MATERIAL: |
| UNSPECIFIED TOLERANCES: | WEIGHT: (LBS) |
| WHOLE DIM (X) : | 3 |
| ONE-PLACE (X.X) : | 1.5 |
| TWO-PLACE (X.XX) : | 0.50 |
| ANGLE : | 1° |
| REFER TO ES0018 FOR FASTENER TIGHTENING GUIDELINES | FIRST USED: 18 V26M |
| DESCRIPTION: WIRING INSTL-BODY, 12V | |
| SHEET: 1 OF 6 | ITEM/PART NO: 000043015 / 32026101000 |
| REF: | 1 09-Oct-2018 |

8 7 6 5 4 3 2 1



- NOTES:**
1. AT MINIMUM ALL WIRES TO BE SUPPORTED AND SECURED PER CODE REQUIREMENTS. USE CLAMP 10495 OR 10497 OR 083610 OR WIRE TIE 8343 OR 108046 AND SCREW G67-XX-XXX OR G56-XX-XXX AS APPROPRIATE FOR INSTALLATION.
 2. MOUNT SWITCH TO DOOR JAMB WITH TAPE 076322-21-000.
 3. MOUNT MAGNET TO SCREEN DOOR FRAME, MOUNT WITH MAGNET TOWARD SWITCH.
 4. WIRE PASSES THROUGH FLOOR IN THIS AREA.
 5. SEE LOAD CENTER ASM FOR ADDITIONAL INFORMATION.
 6. REMOVE SCREWS FROM MAGNET SWITCH TO INSTALL LOCK WASHER AND RING TERMINALS.



FOR ELECTRICAL TORQUE SPECIFICATIONS SEE DWG NO. 128783-01-000

FOR ELECTRICAL CALLOUTS SEE DWG NO. 121339-01-000

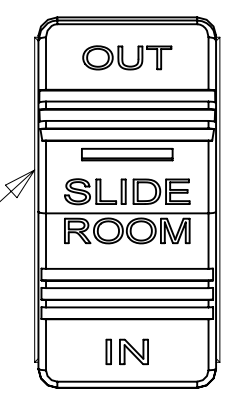
| | |
|---|---|
| 265 | CODES/STANDARDS-CSA/CMVSS |
| 1B1 | CODES/STANDARDS USA |
| 1B1 | 265 |
| DESCRIPTION: WIRING INSTL-BODY, 12V | |
| SHEET: 3 OF 6 | ITEM/PART NO: 000043015 / 3202610100 |
| REV | 09-Oct-2018 |

WARNING
 CRUSH HAZARD. Keep people and objects clear of the inside and outside of the slideout room when operating. Failure to comply could result in death or serious injury.

LABEL-WARNING, SLIDEOUT
 116549-02-000

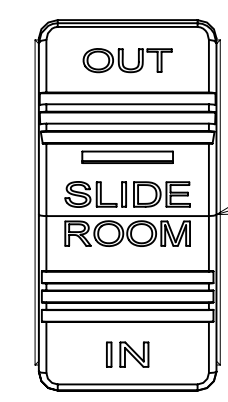
LABEL-SLIDEOUT, DRIVER, FRONT
 163992-01-CHT

DRIVER'S SIDE FRONT



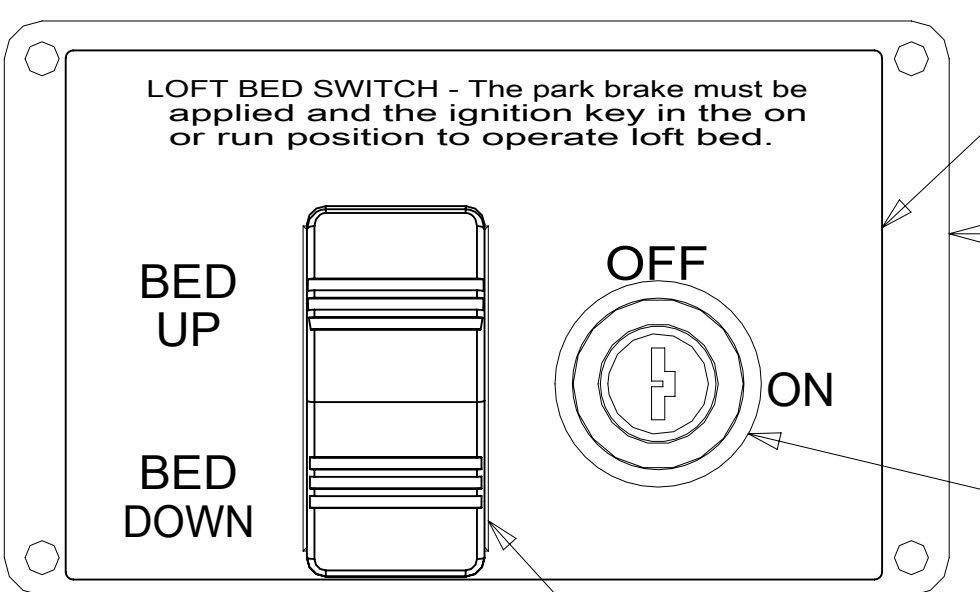
SWITCH 108357-18-000 ACTUATOR 108356-31-CHT CIRCUITS DU,KE,DR,ABY,ABZ

DRIVER'S SIDE REAR



LABEL-SLIDEOUT, DRIVER, REAR
 163992-02-CHT

SWITCH 108357-18-000 ACTUATOR 108356-31-CHT CIRCUITS BBM,KE,BBN,ABW,ABX



LABEL-LOFT BED SWITCH
 000042109 / 320011-01-CHT

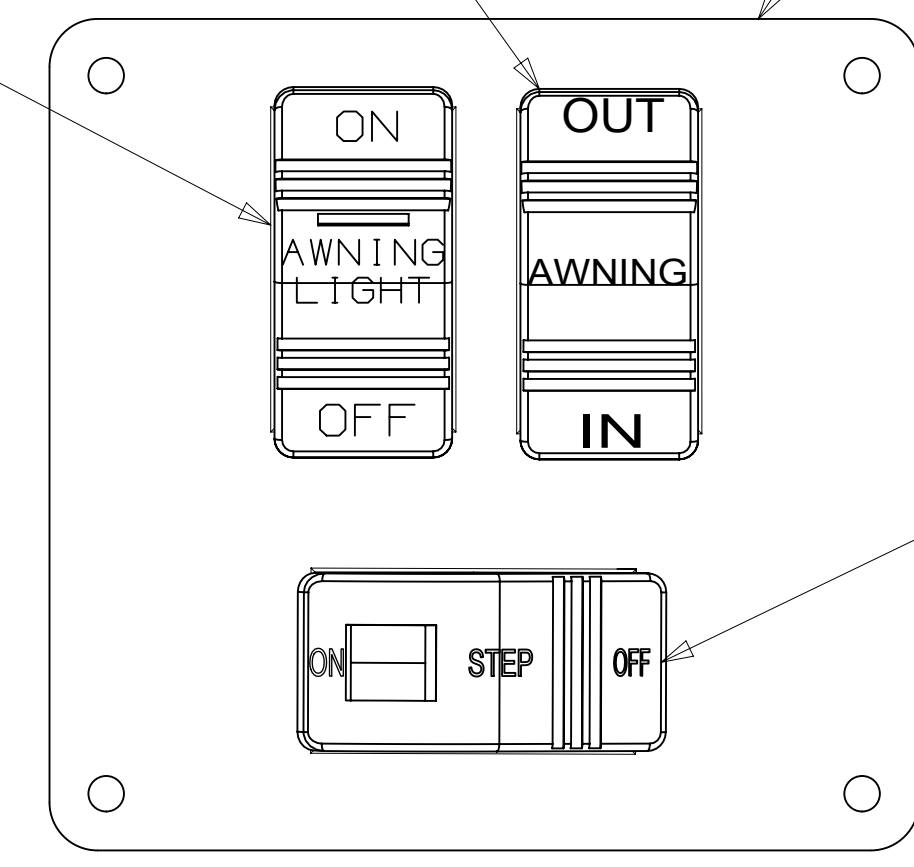
PLATE-KEY, LOFT BED
 000041278 / 319697-01-CHT SCREW 76790-05-000 (4)

SWITCH-KEY, SPST-ILLINOIS LCK
 163097-01-000 (CIRCUITS: JD,JD-1)

SWITCH 108357-07-000 ACTUATOR 108356-01-CHT CIRCUITS EB,ZZY,ZZZ

DETAIL DA

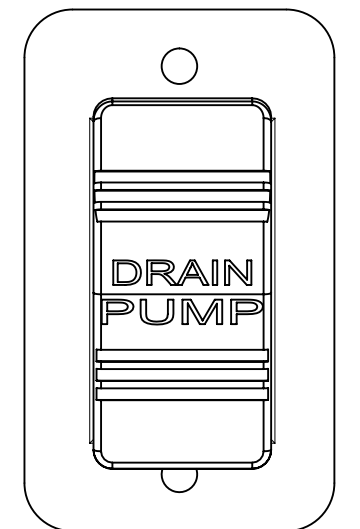
SWITCH-AWNING 108357-14-000 ACTUATOR-SWITCH 108356-28-CHT CIRCUITS SP,ZZL,WE



DETAIL DF 1

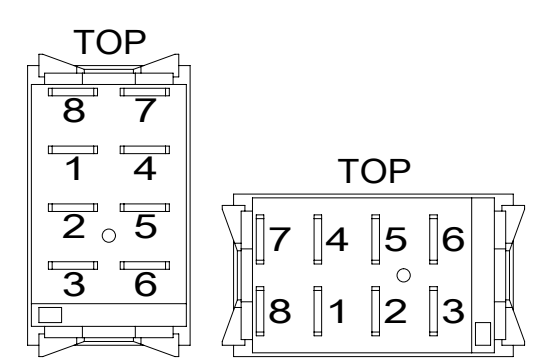
PLATE-SWITCH 158431-21-CHT SCREW G11-06-10U (4)

SWITCH-STEP 108357-19-000 CIRCUITS ER,ES

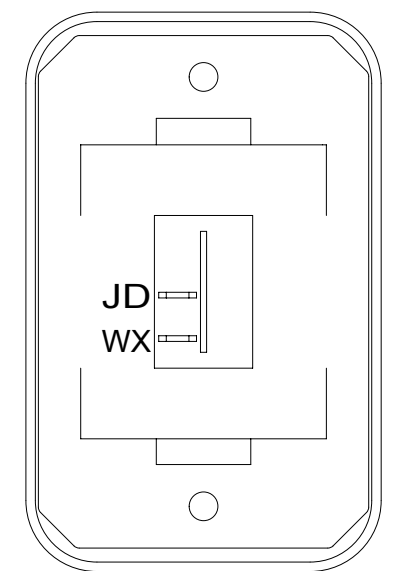


DETAIL DJ

SWITCH-ROCKER 108357-09-000 ACTUATOR 108356-27-CHT PLATE 98351-07-CHT SCREW G11-06-10U (2)

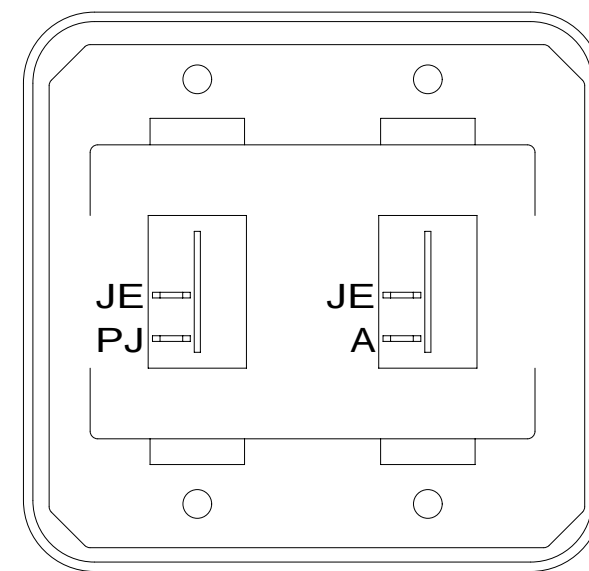


DETAIL DK



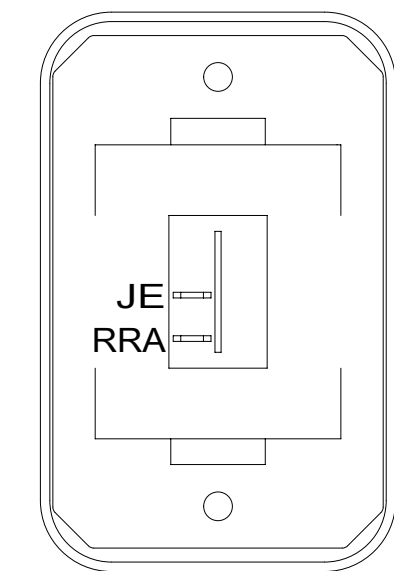
DETAIL DB

SWITCH-ROCKER 135740-01-CHT SWITCH-BASE 135741-01-CHT SWITCH-BEZEL 135742-01-CHT SCREW G11-08-08U (2)



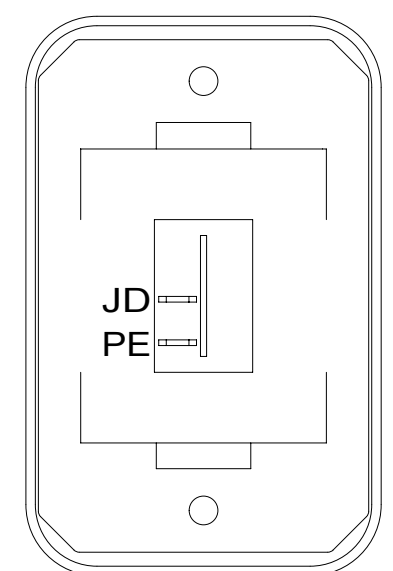
DETAIL DD

SWITCH-ROCKER 135740-01-CHT SWITCH-BASE 135741-02-CHT SWITCH-BEZEL 135742-02-CHT SCREW G11-08-08U (4)



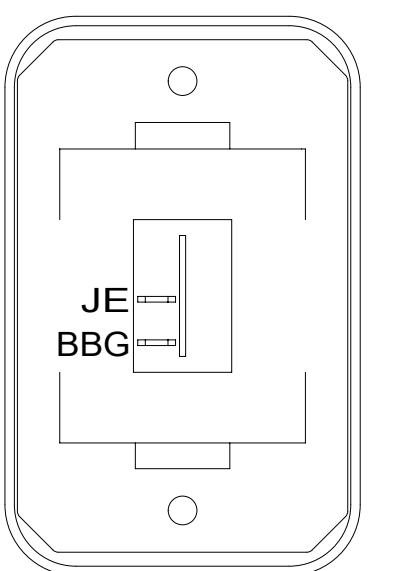
DETAIL DG

SWITCH-ROCKER 135740-01-CHT SWITCH-BASE 135741-01-CHT SWITCH-BEZEL 135742-01-CHT SCREW G11-08-08U (2)



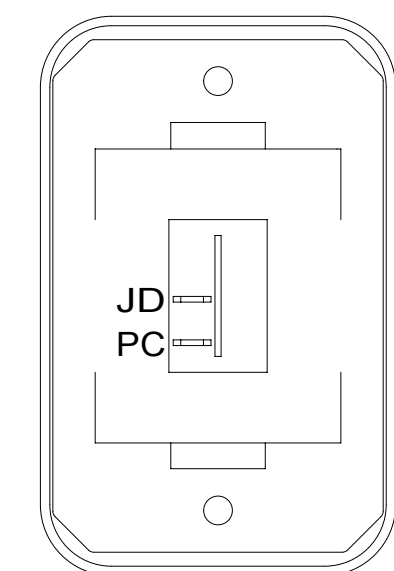
DETAIL DC

SWITCH-ROCKER 135740-01-CHT SWITCH-BASE 135741-01-CHT SWITCH-BEZEL 135742-01-CHT SCREW G11-08-08U (2)



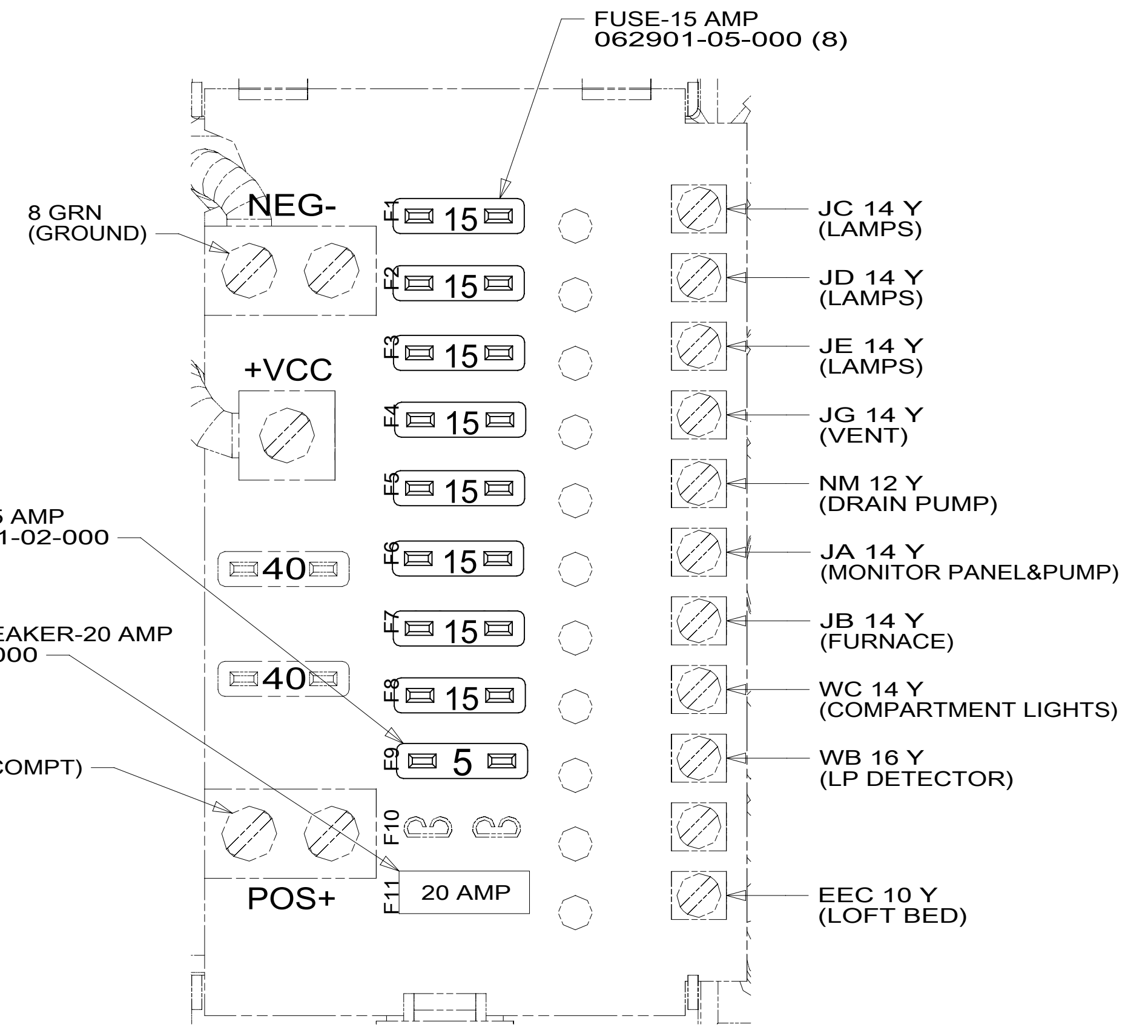
DETAIL DE

SWITCH-ROCKER 135740-01-CHT SWITCH-BASE 135741-01-CHT SWITCH-BEZEL 135742-01-CHT SCREW G11-08-08U (2)

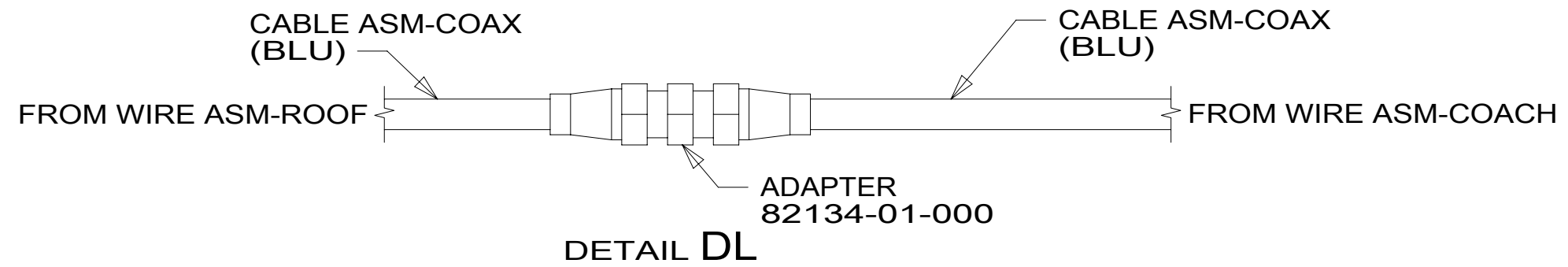


DETAIL DH

SWITCH-ROCKER 135740-01-CHT SWITCH-BASE 135741-01-CHT SWITCH-BEZEL 135742-01-CHT SCREW G11-08-08U (2)



DETAIL DM



DETAIL DL

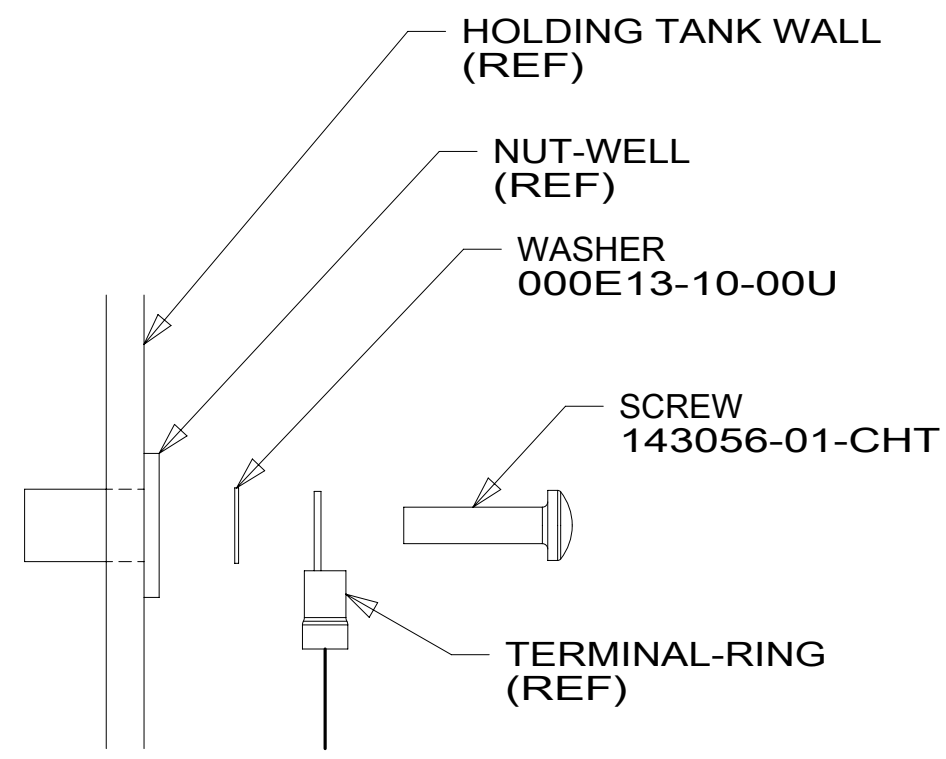
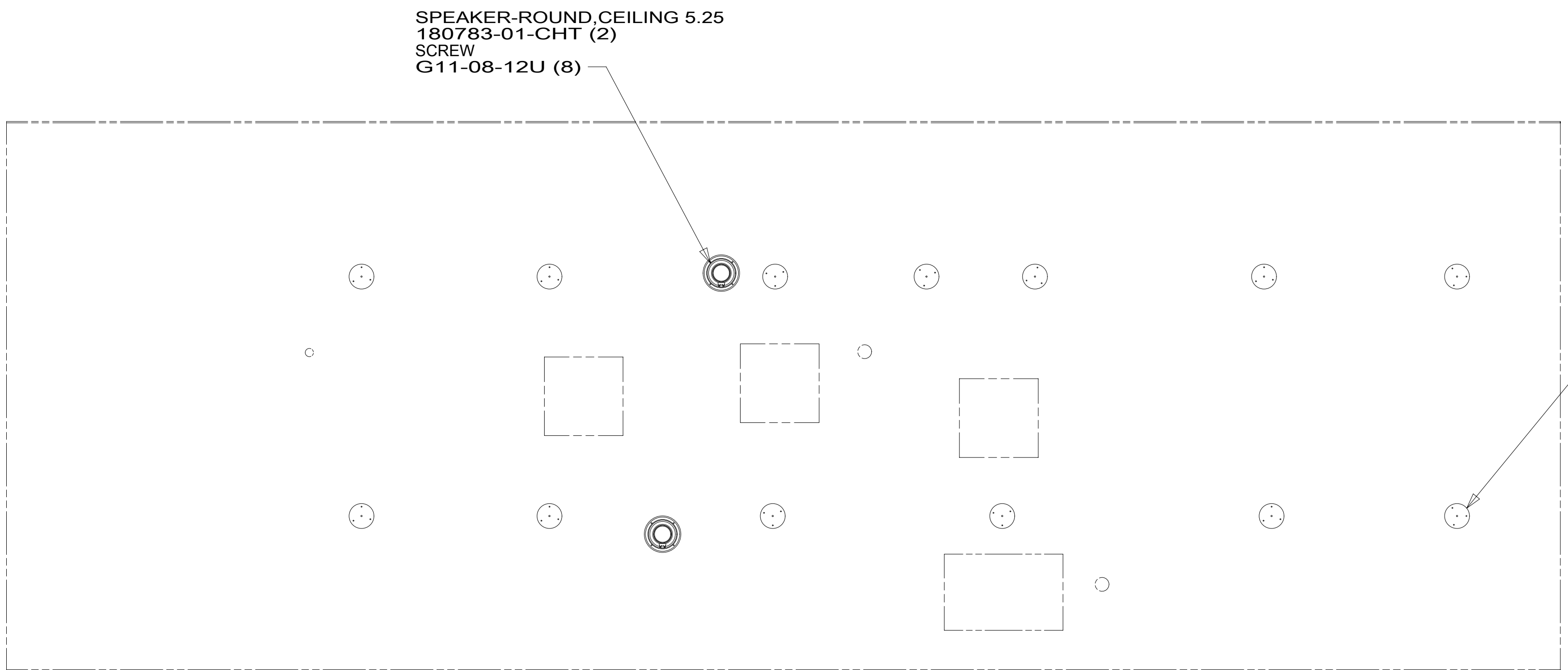
NOTES:
 1 FOR SWITCH ORIENTATION SEE DETAIL DK.

FOR ELECTRICAL TORQUE SPECIFICATIONS SEE DWG NO. 128783-01-000

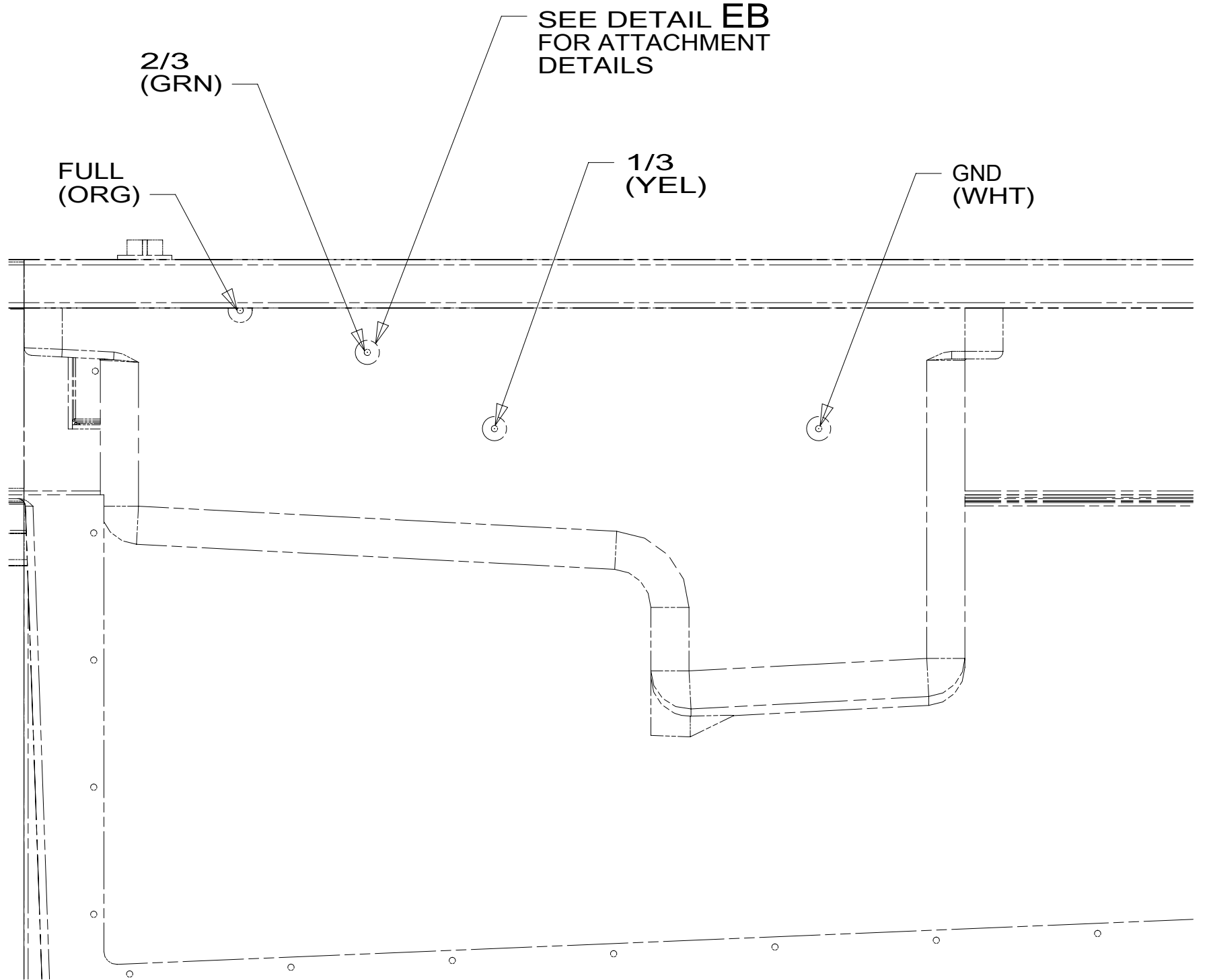
FOR ELECTRICAL CALLOUTS SEE DWG NO. 121339-01-000

- 265 CODES/STANDARDS-CSA/CMVSS
- 1B1 CODES/STANDARDS USA

| | |
|---|--|
| DESCRIPTION: WIRING INSTL-BODY, 12V | |
| SHEET: 4 OF 6 | ITEM/PART NO: 000043015 / 32026101000 |
| REV 09-Oct-2018 | |

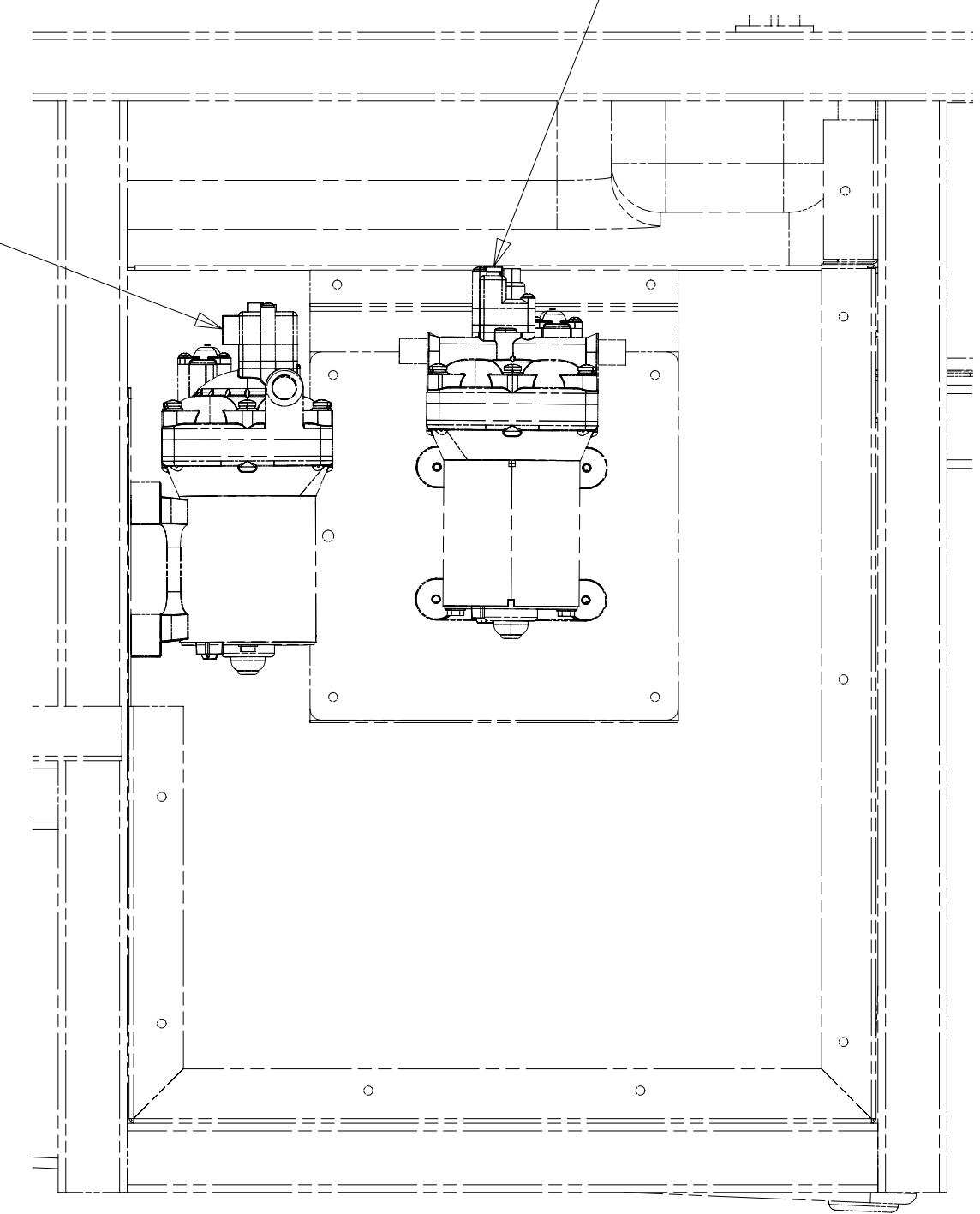


DETAIL EB 1



DETAIL EA 2

DRAINAGE PUMP-
PLUG IN WIRE W/ GRN TAPE
CIRCUITS: DA,PM



DETAIL EC

- NOTES:
- 2 RED WIRE FROM WIRE ASM-MONITOR PANEL CONNECTS TO WINNEBAGO WIRING HARNESS.
 - 1 TYPICAL WIRE ATTACHMENT AT ALL LEVEL PROBES (4 EACH) FOR WATER, MAIN, AND AUX HOLDING TANKS.

FOR ELECTRICAL TORQUE SPECIFICATIONS SEE DWG NO. 128783-01-000

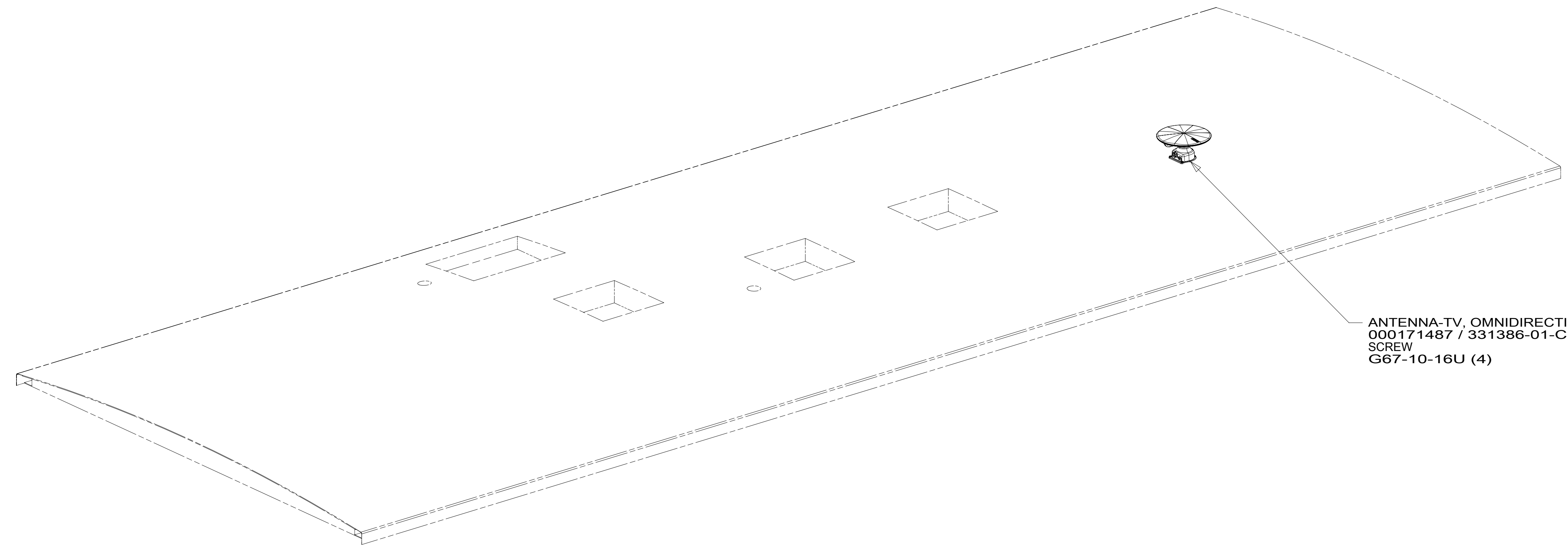
FOR ELECTRICAL CALLOUTS SEE DWG NO. 121339-01-000

- 265 CODES/STANDARDS-CSA/CMVSS
- 1B1 CODES/STANDARDS USA

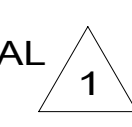
| | | | |
|-------------------------------|-------------------------|---------|--|
| DESCRIPTION: | | 1B1 265 | |
| WIRING INSTL-BODY, 12V | | | |
| SHEET: | ITEM/PART NO.: | REV | |
| 5 OF 6 | 000043015 / 32026101000 | | |

8 7 6 5 4 3 2 1

D
C
B
A



ANTENNA-TV, OMNIDIRECTIONAL
000171487 / 331386-01-CHT
SCREW
G67-10-16U (4)



1 SEE ANTENNA INSTALLATION MANUAL FOR CORRECT
INSTALLATION PROCEDURE.

NOTES:

FOR ELECTRICAL
TORQUE
SPECIFICATIONS
SEE DWG NO.
128783-01-000

FOR
ELECTRICAL
CALLOUTS
SEE DWG NO.
121339-01-000

265 CODES/STANDARDS-CSA/CMVSS
1B1 CODES/STANDARDS USA

| | |
|---|--|
| 1B1 265 | |
| DESCRIPTION: WIRING INSTL-BODY, 12V | |
| SHEET: 6 OF 6 | ITEM/PART NO: 000043015 / 32026101000 |
| REV 1 09-Oct-2018 | |

8 7 6 5 4 3 2 1