

8

7

6

5



4

3

2

1

D

D

C

C



B

B

A

A

8

7

6

5



4

3

2

1

CABLE ASM-CHASSIS BATTERY (RED)	192678-02-000
CABLE ASM-COACH BATTERY (YEL)	141417-52-030
CABLE ASM-JUMPER, POS 1 (YEL)	141417-52-015
CABLE ASM-JUMPER, POS 2 (YEL)	141417-52-031
CABLE ASM-JUMPER, NEG 1 (BLK)	141417-02-015
CABLE ASM-JUMPER, NEG 2 (BLK)	141417-02-033
CABLE ASM-INVERTER FUSE (ORG)	175207-61-004
CABLE ASM-INVERTER (ORG)	175207-66-020
CABLE ASM-INVERTER GND (BLK)	175211-02-052
CABLE ASM-COACH BATTERY GND (BLK)	141417-02-006

- 265 CODES/STANDARDS-CSA/CMVSS
- 1B1 CODES/STANDARDS USA
- 1B1 265



DSNR:		ALL DIMENSIONS ARE IN MILLIMETERS		
DIFFR:				
UNSPECIFIED TOLERANCES:		MATERIAL:		
WHOLE DIM (X)	: 3			
ONE-PLACE (X.X)	: 1.5			
TWO-PLACE (X.XX)	: 0.50			
ANGLE	: 1°			

FOR ELECTRICAL TORQUE SPECIFICATIONS SEE DWG NO. 128783-01-000

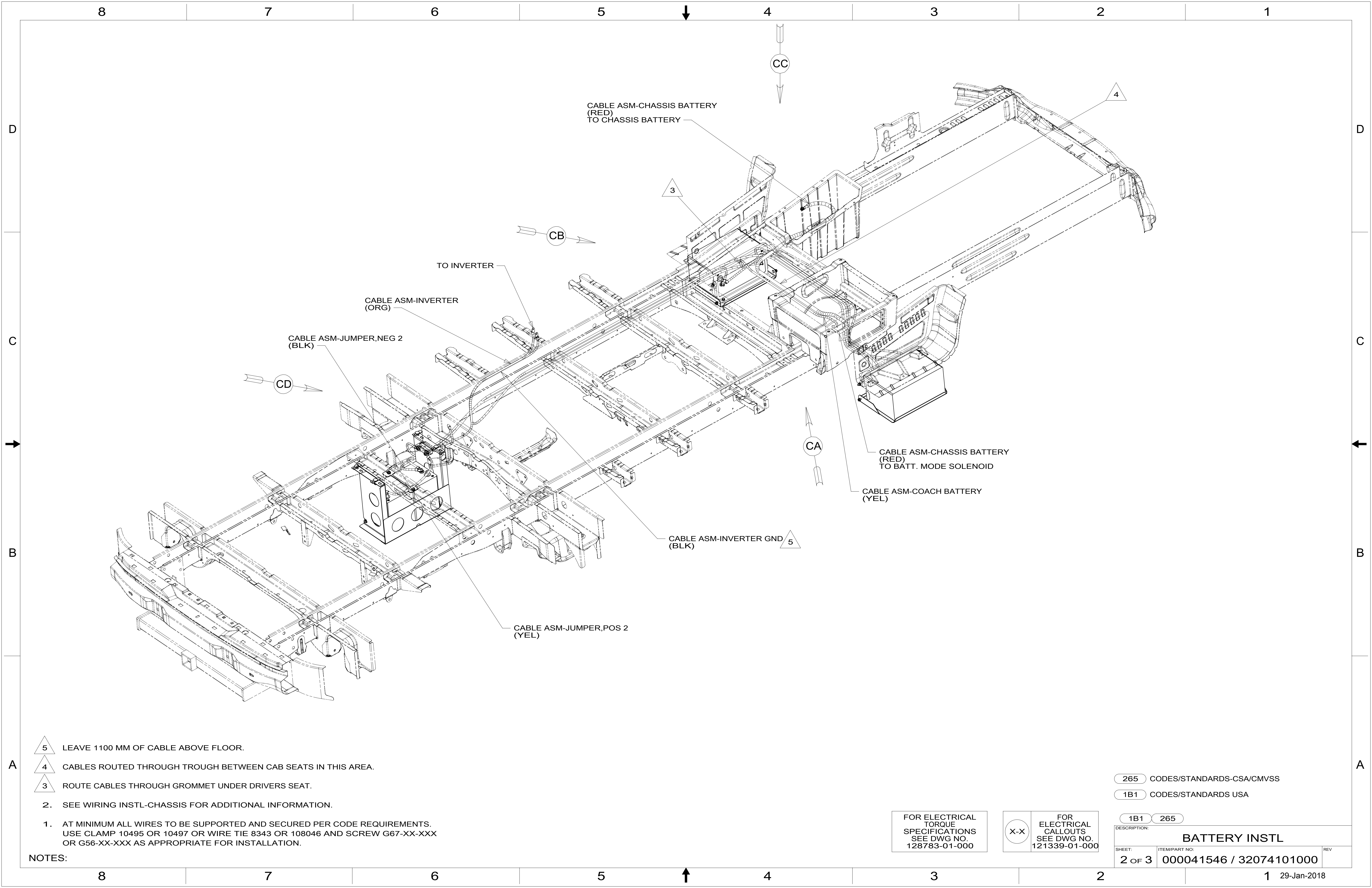
FOR ELECTRICAL CALLOUTS SEE DWG NO. 121339-01-000

REFER TO ES0018 FOR FASTENER TIGHTENING GUIDELINES

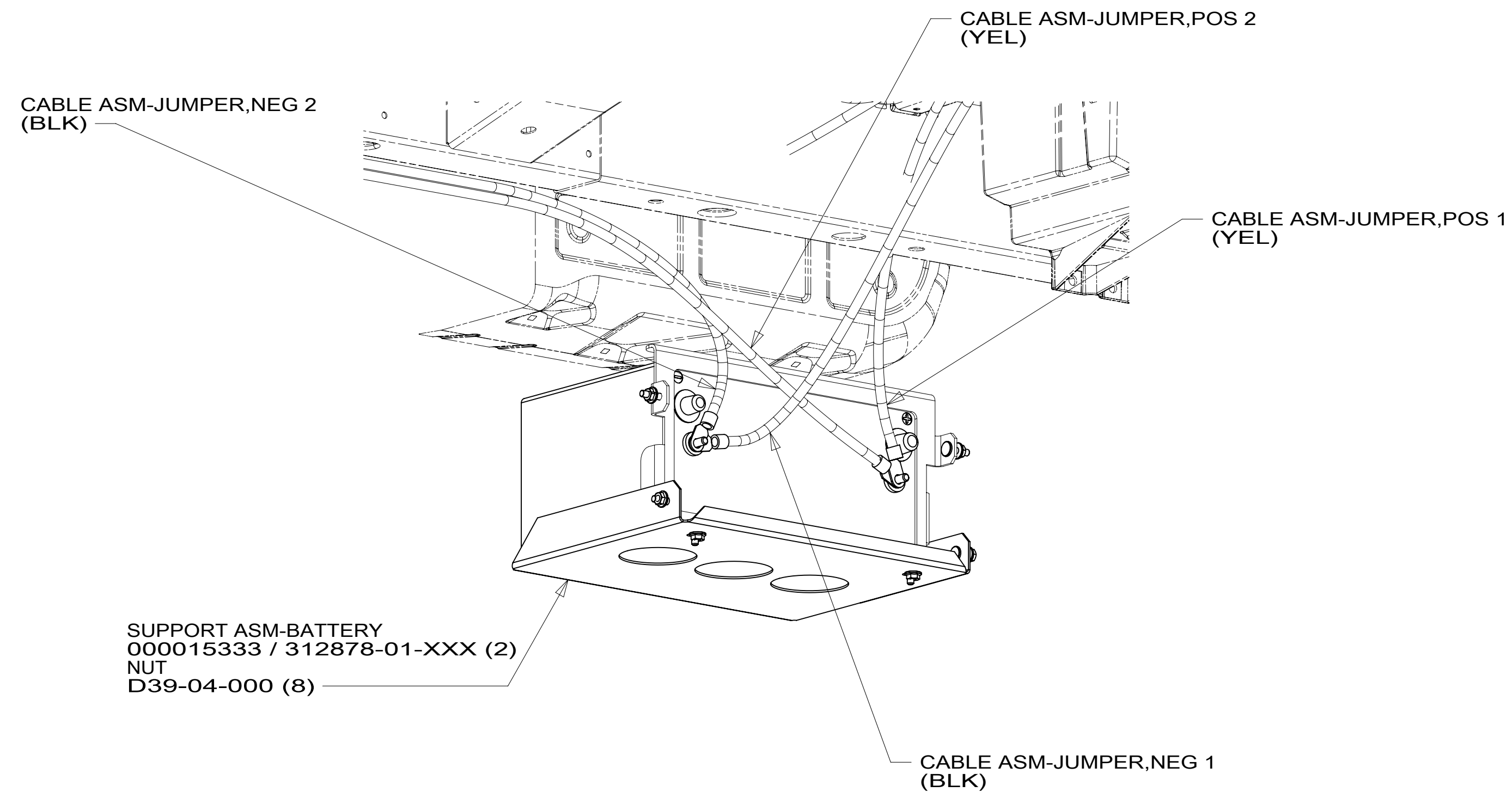
WEIGHT: (LBS) FIRST USED: **18 B44E**

DESCRIPTION: **BATTERY INSTL**

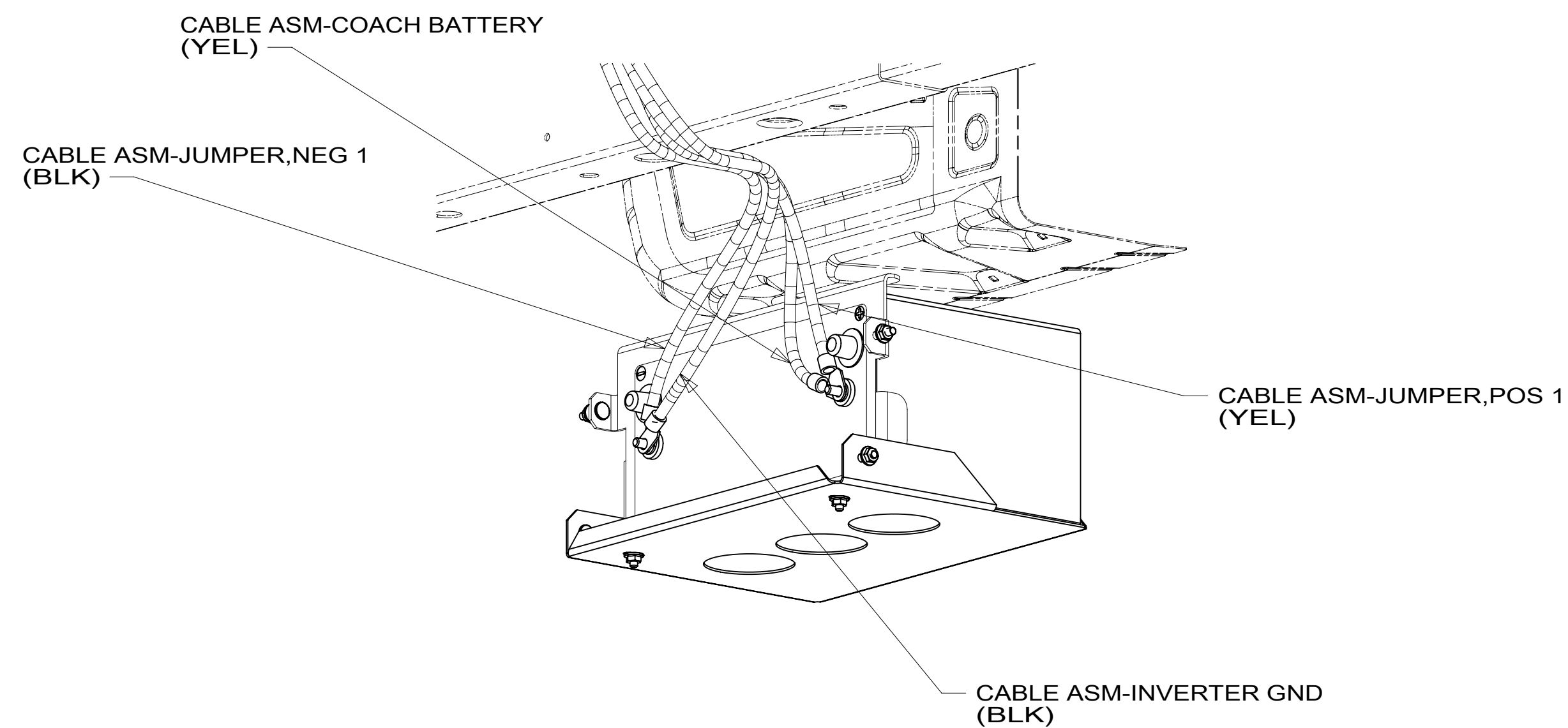
SHEET: **1 OF 3** ITEM/PART NO.: **000041546 / 32074101000** REF: **1** REV: **29-Jan-2018**



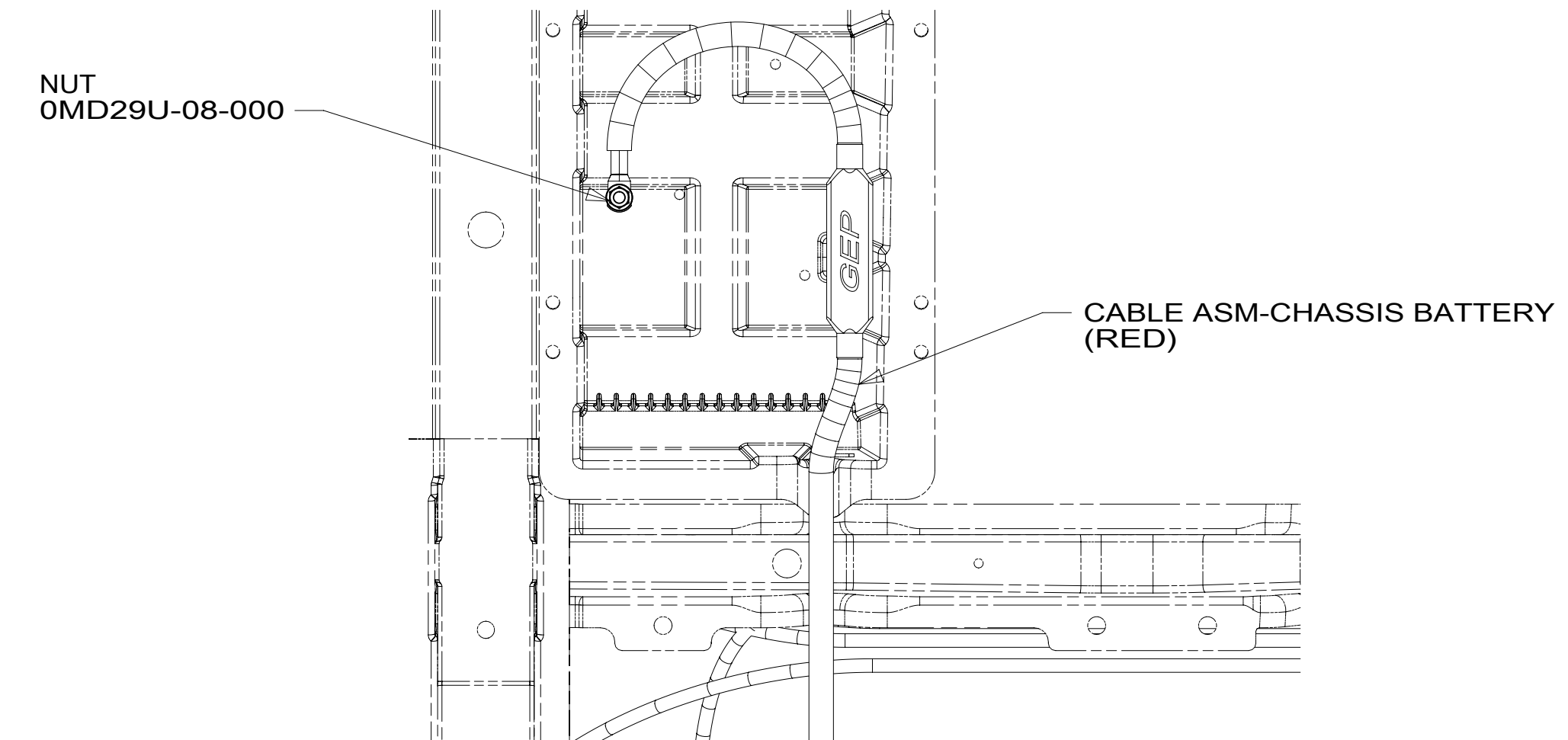
8 7 6 5 4 3 2 1



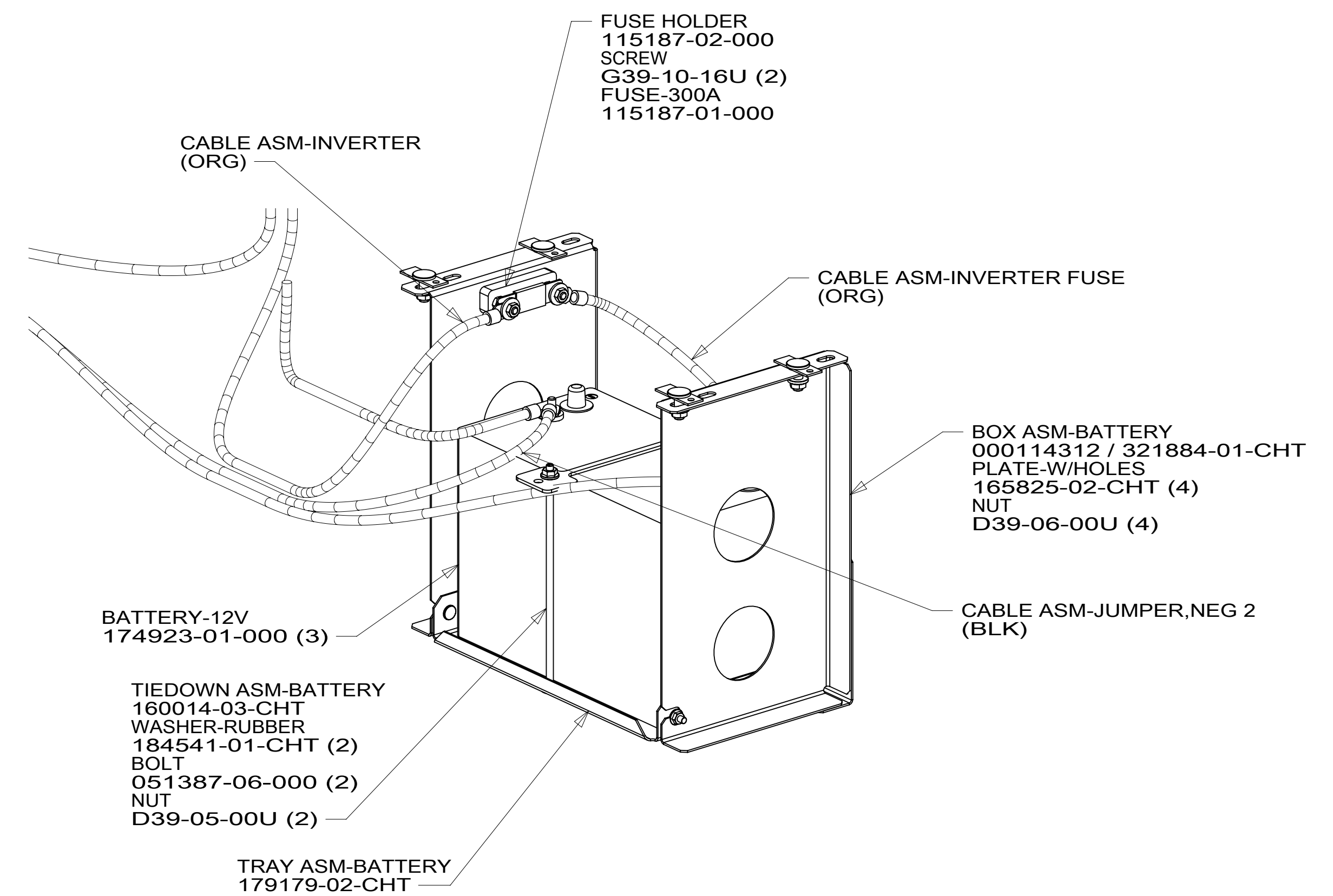
VIEW CA



VIEW CB



VIEW CC



VIEW CD

NOTES:
1. SEE WIRING INSTL-CHASSIS FOR ADDITIONAL INFORMATION.

265 CODES/STANDARDS-CSA/CMVSS

1B1 CODES/STANDARDS USA

1B1 265

FOR ELECTRICAL TORQUE SPECIFICATIONS SEE DWG NO. 128783-01-000

FOR ELECTRICAL CALLOUTS SEE DWG NO. 121339-01-000

DESCRIPTION: BATTERY INSTL		
SHEET: 3 OF 3	ITEM/PART NO: 000041546 / 32074101000	REV

8 7 6 5 4 3 2 1 29-Jan-2018