

- 9 FASTEN PLATFORM TO FLOOR AFTER SIDEWALL IS SET AND HEATER IS ATTACHED TO WALL.
- 8. ALL CRIMP FITTINGS TO 1/2" PEX TUBING REQUIRE 1/2" CLAMP 140171-03-000.
- 7. ALL CRIMP FITTINGS TO 5/8" PEX TUBING REQUIRE 5/8" CLAMP 140171-04-000.
- 6 LABEL HOT AND COLD SUPPLY TUBES AND TAPE FITTING TO TUBE BEFORE CABINET SET TO PREVENT MOVEMENT.
- 5 ADD PIPE WRAP (LADDER SCRAP 110157-02-000) INSULATION.
- 4 ADD TEFLON TAPE 010405-02-000.
- 3. ALL TUBING TO BE SECURED AT 1200 INTERVALS MAXIMUM WITH CLAMP 010495-01-000 AND SCREW 000G67-10-12U OR EQUIVALENT.
- 2. TUBING TO BE INSTALLED WITH SUFFICIENT SLOPE TO PROVIDE DRAINAGE TO NEAREST VALVE.
- 1. PLASTIC FITTINGS TO BE SEALED WITH SEALANT 084456-01-000.

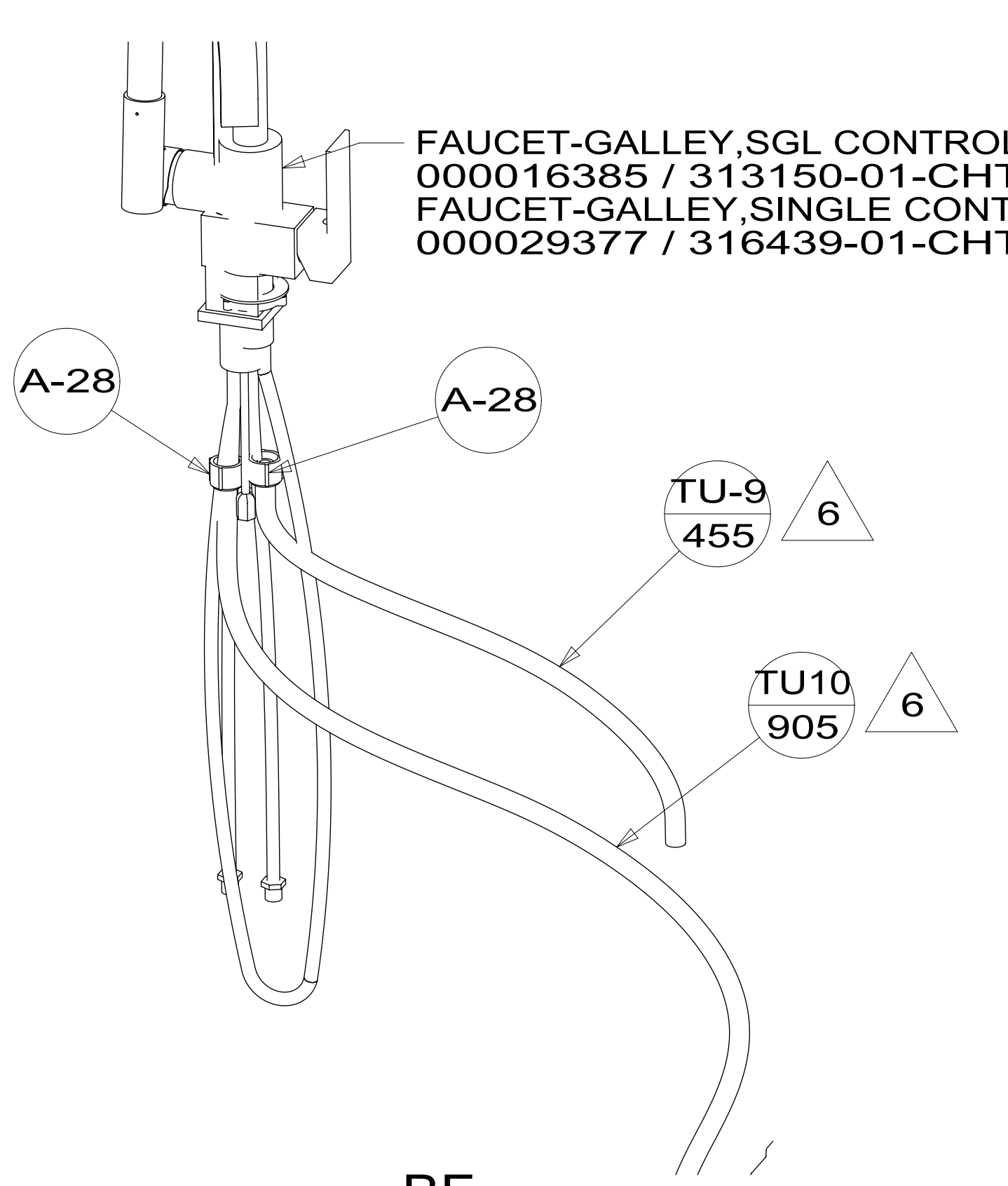
- 09A PREMIUM PACKAGE
- 093 PREMIUM PACKAGE WITHOUT
- 79W REFRIGERATOR-4 DOOR

WINNEBAGO[®]
COPYRIGHT 2017 WINNEBAGO INDUSTRIES, INC.

| | | | |
|--|-------------------------|-----------------------------------|-------------------|
| DSNR: | | ALL DIMENSIONS ARE IN MILLIMETERS | |
| DIFFR: | | | |
| UNSPECIFIED TOLERANCES: | MATERIAL: | | |
| WHOLE DIM (X) : | | 3 | |
| ONE-PLACE (X.X) : | | 1.5 | |
| TWO-PLACE (X.XX) : | | 0.50 | |
| ANGLE : | | 1° | |
| REFER TO ES0018 FOR FASTENER TIGHTENING GUIDELINES | | WEIGHT: (LBS) | FIRST USED: (REF) |
| | | | 18 331K |
| DESCRIPTION: WATER SYSTEM INSTL | | | |
| SHEET: | ITEM/PART NO: | REV | |
| 1 OF 4 | 000040960 / 31960501000 | | |
| REF: | | 1 07-Sep-2017 | |

FOR WATER CALLOUTS
 SEE DWG NO.
 000209446 /
 303369-01-000

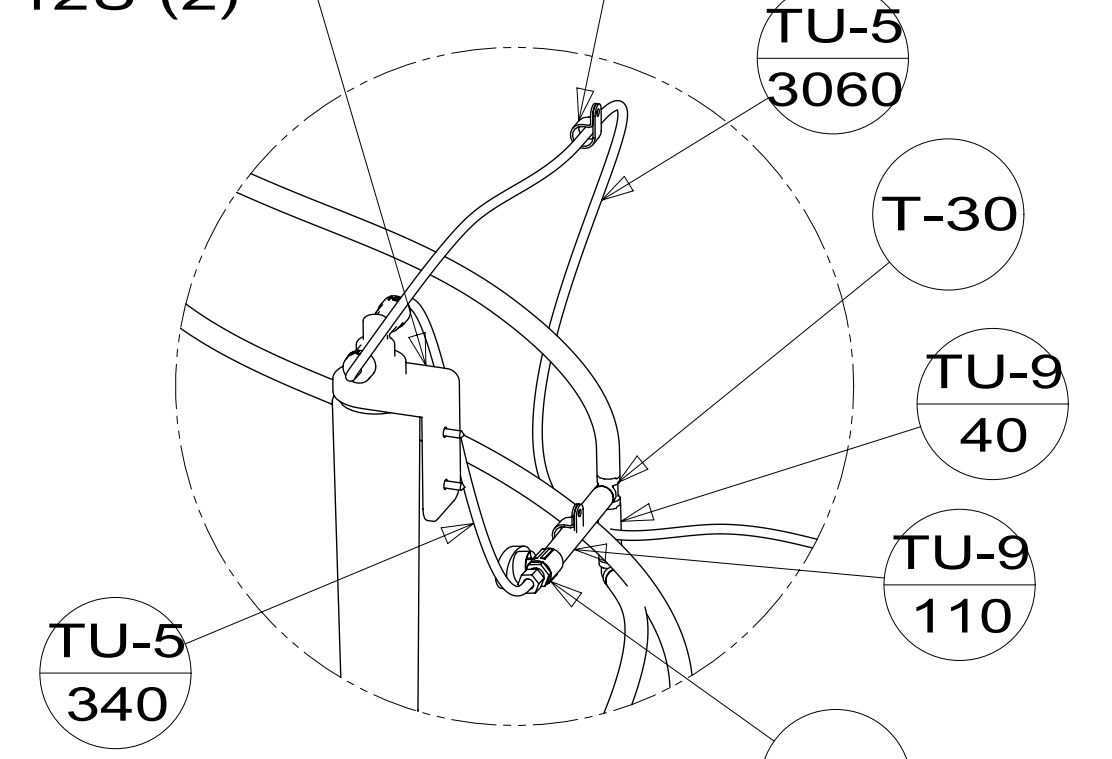
NOTES:



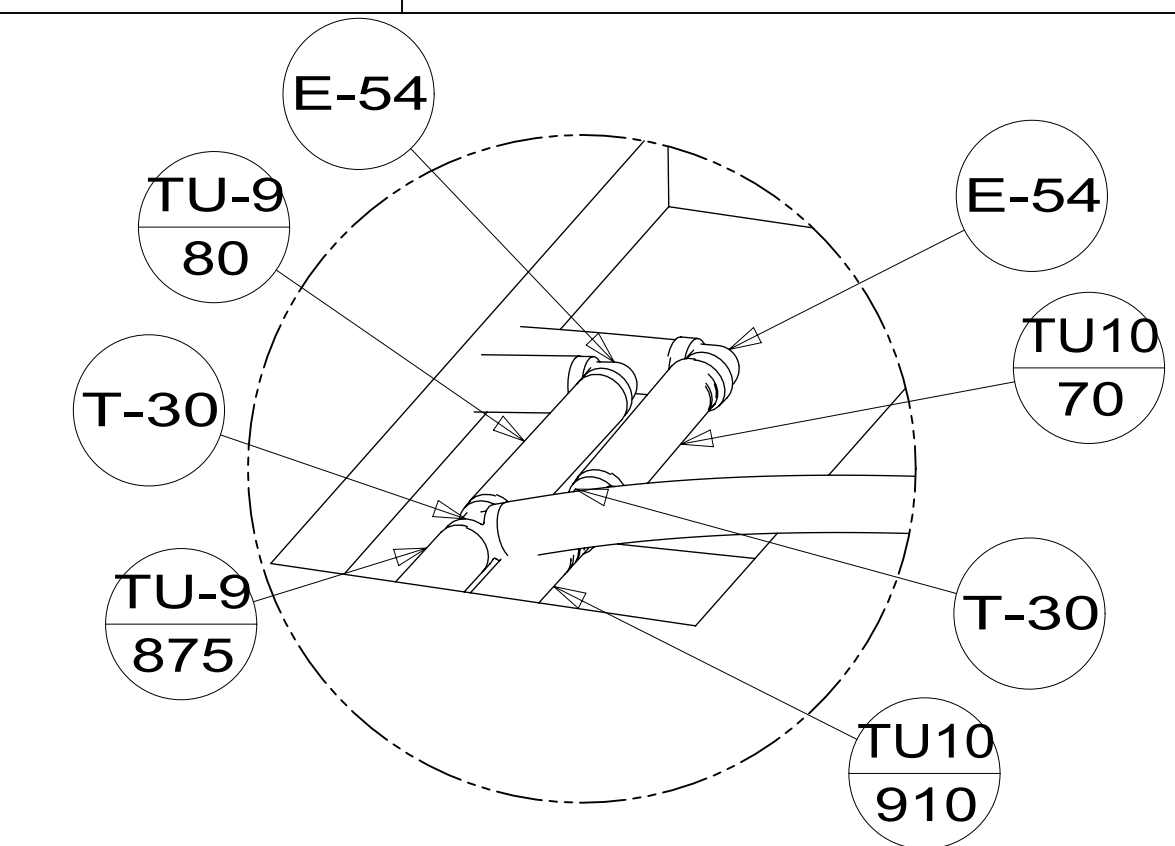
DETAIL BF
(SHOWN W/OUT CABINETS)

FILTER KIT-WATER, SINK
000040604 / 319476-01-000
SCREW
000G67-10-12U (2)

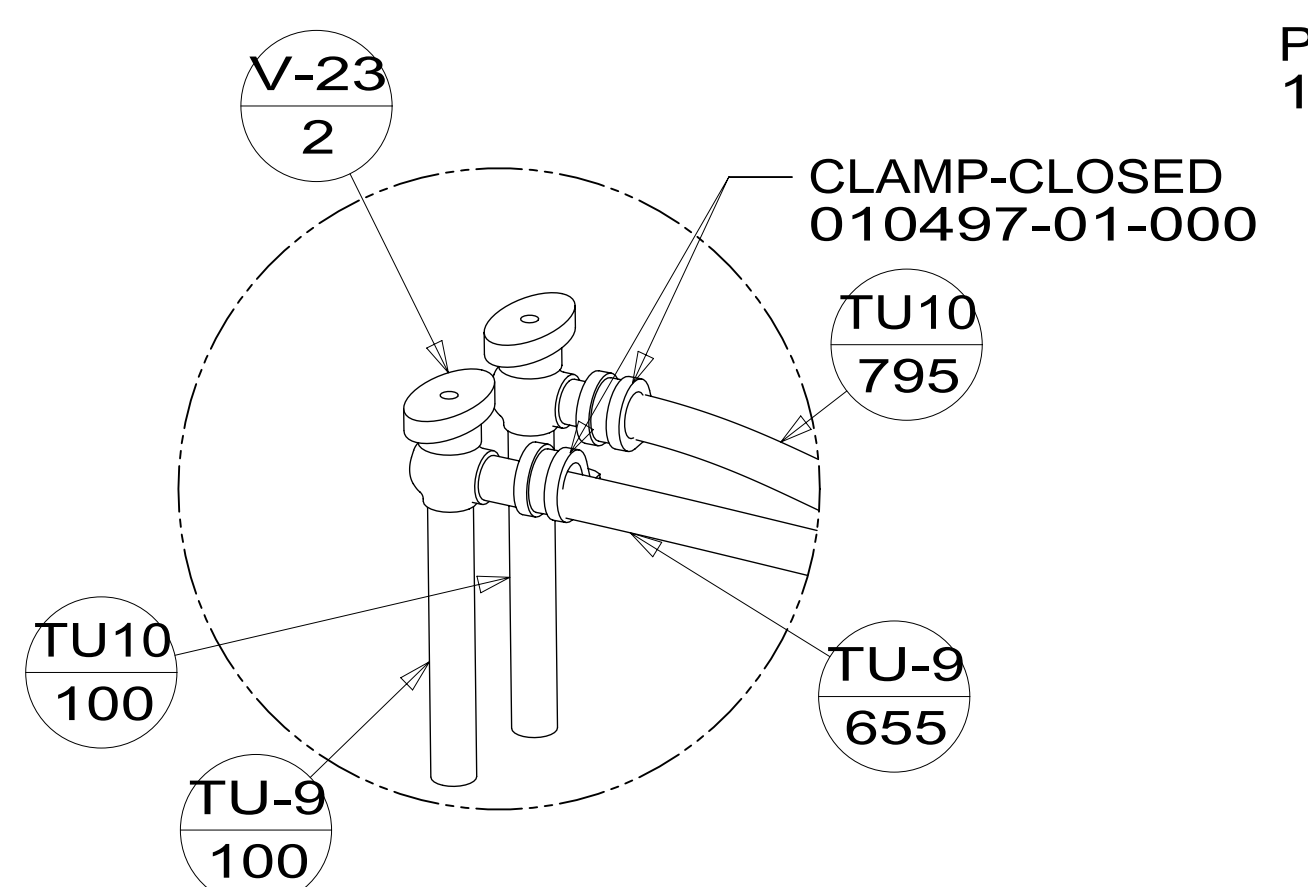
CLAMP
010495-01-000 (2)



DETAIL BK
(79W)

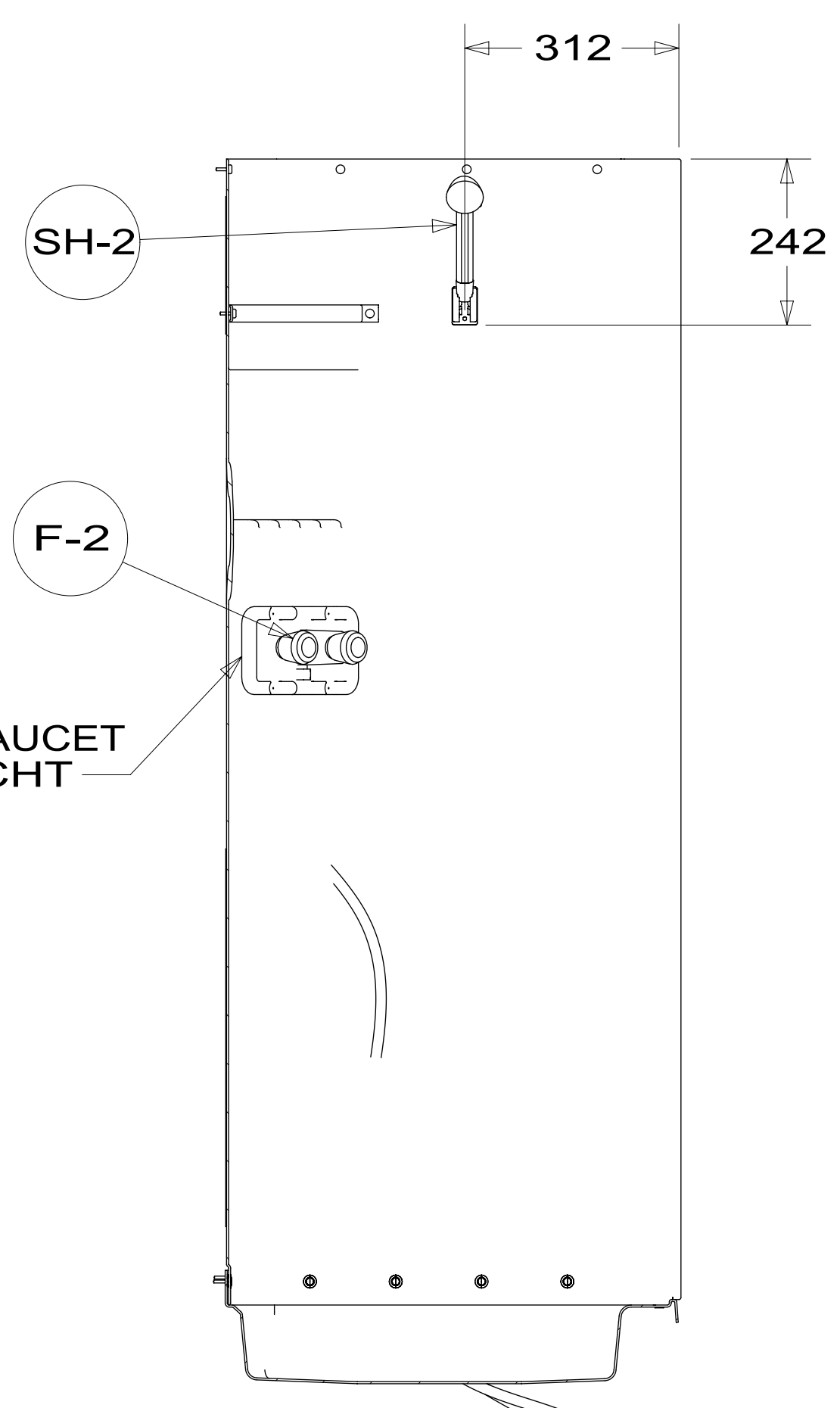


DETAIL BB

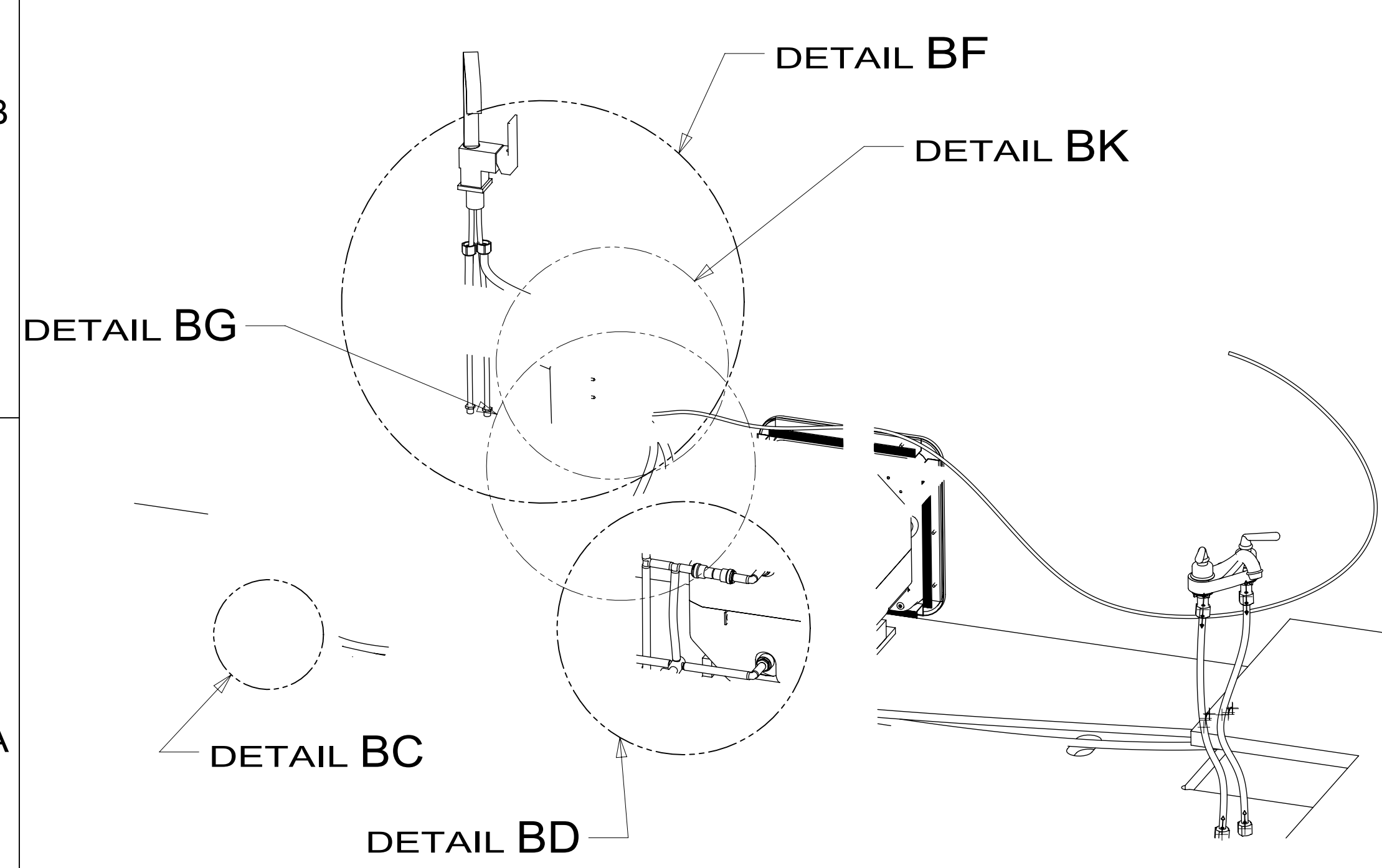


DETAIL BC
(SHOWN W/OUT CABINETS & FLOOR)

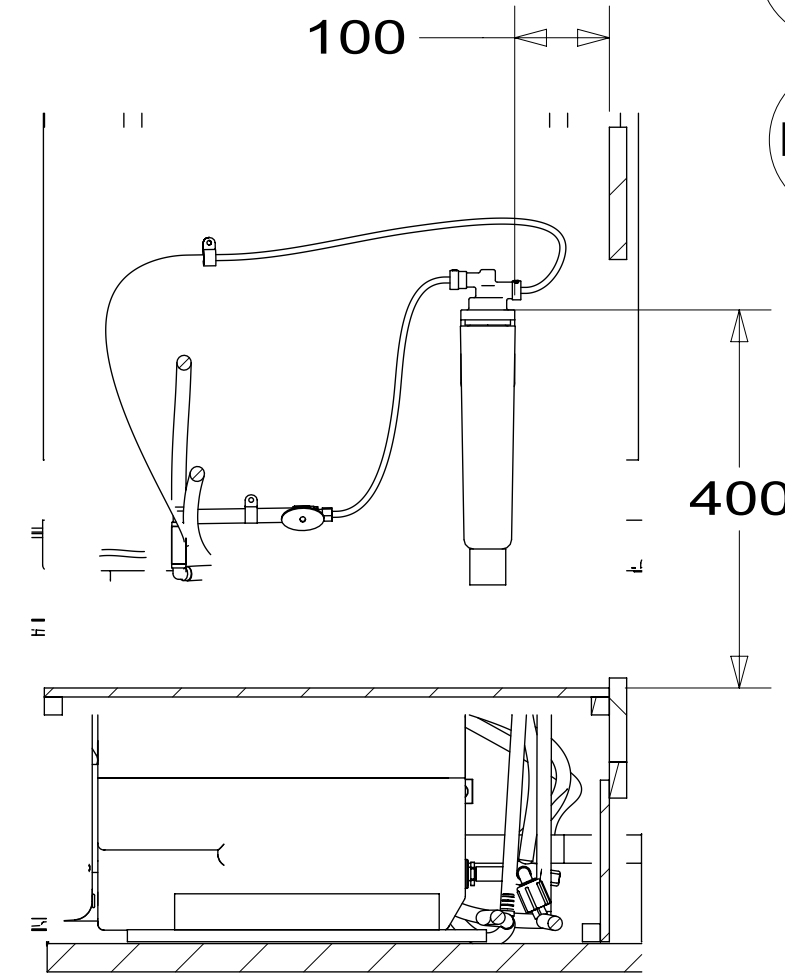
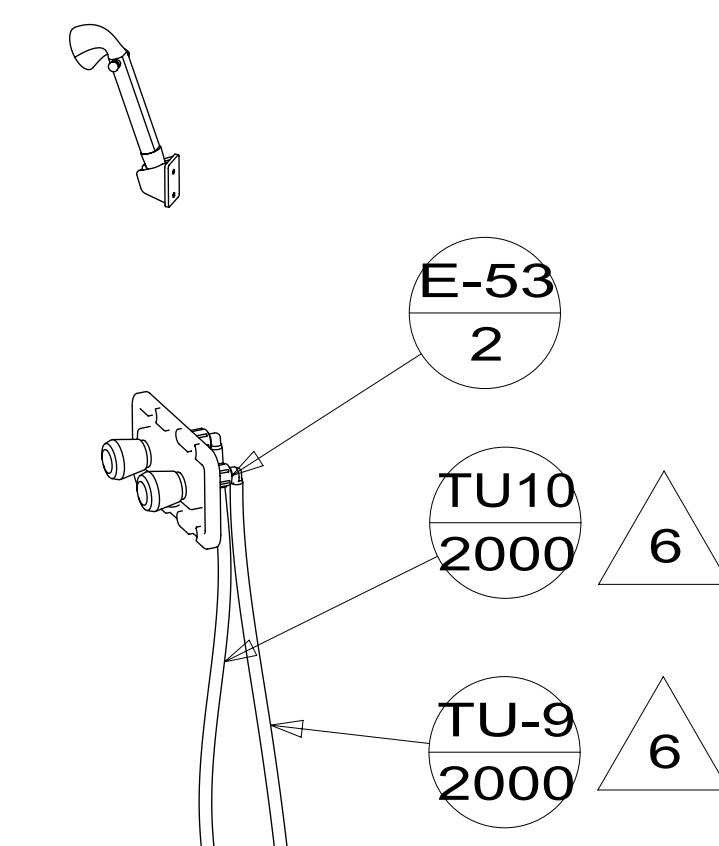
PANEL-SH FAUCET
167738-02-CHT



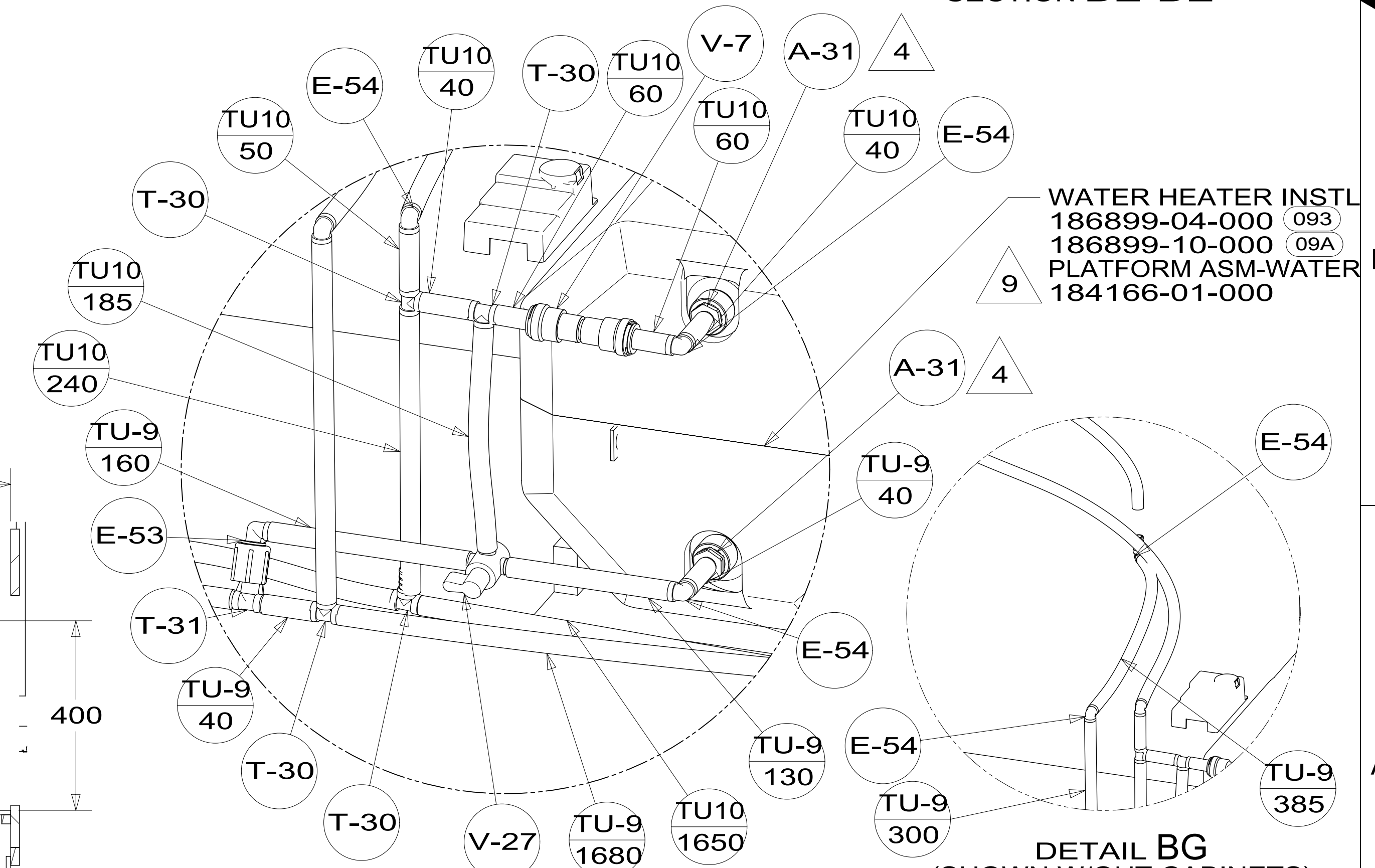
SECTION BE-BE



VIEW BA



SECTION BM-BM

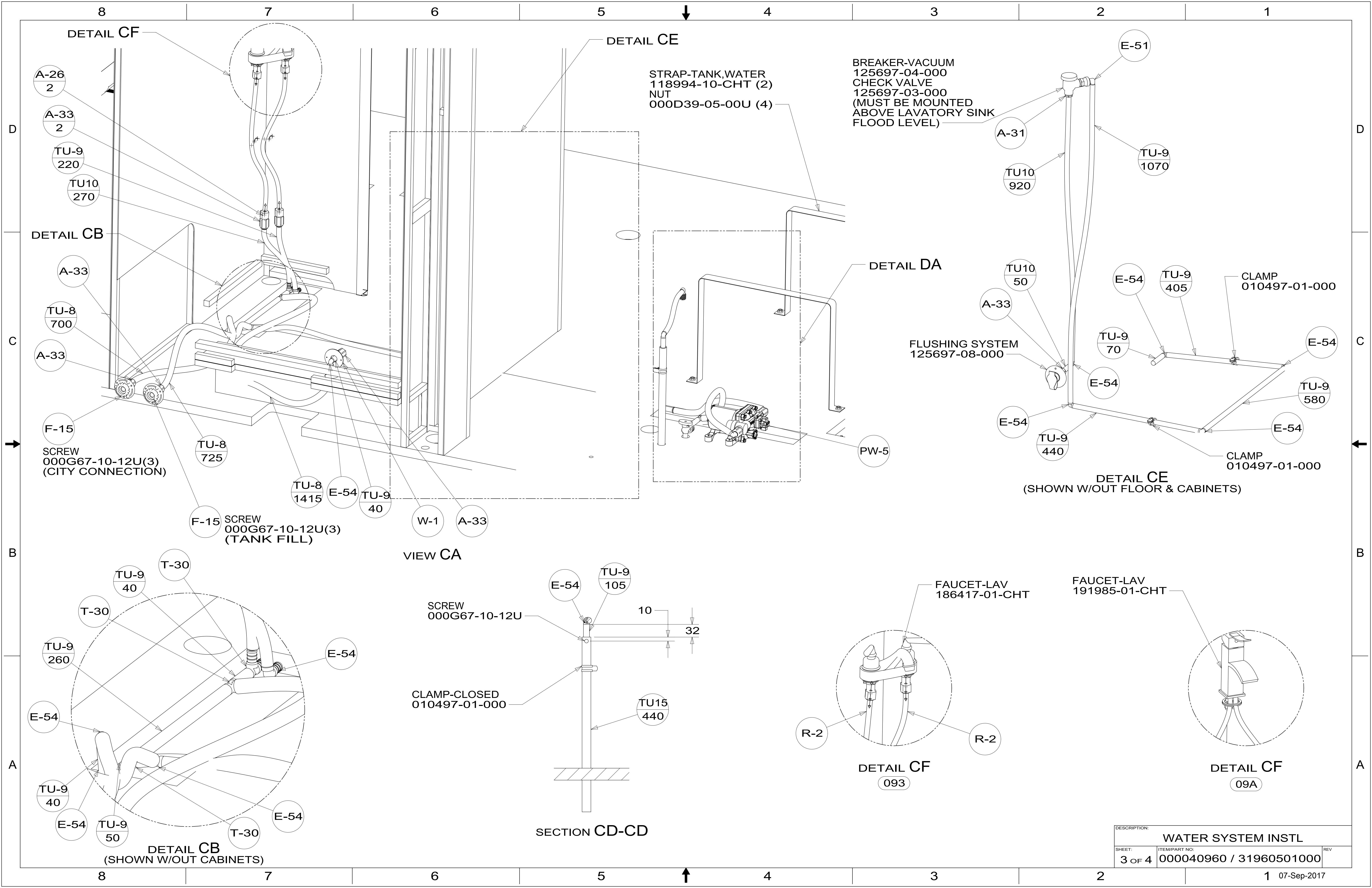


DETAIL BD
(SHOWN W/OUT CABINETS)

WATER HEATER INSTL
186899-04-000 (093)
186899-10-000 (09A)
PLATFORM ASM-WATER
184166-01-000

DETAIL BG
(SHOWN W/OUT CABINETS)

| | | |
|--------------------|-------------------------|-----|
| DESCRIPTION: | | |
| WATER SYSTEM INSTL | | |
| SHEET: | ITEM/PART NO.: | REV |
| 2 OF 4 | 000040960 / 31960501000 | |



| | | |
|--------------------|-------------------------|-----|
| DESCRIPTION: | | |
| WATER SYSTEM INSTL | | |
| SHEET: | ITEM/PART NO: | REV |
| 3 OF 4 | 000040960 / 31960501000 | |
| 1 07-Sep-2017 | | |

8

7

6

5

4

3

2

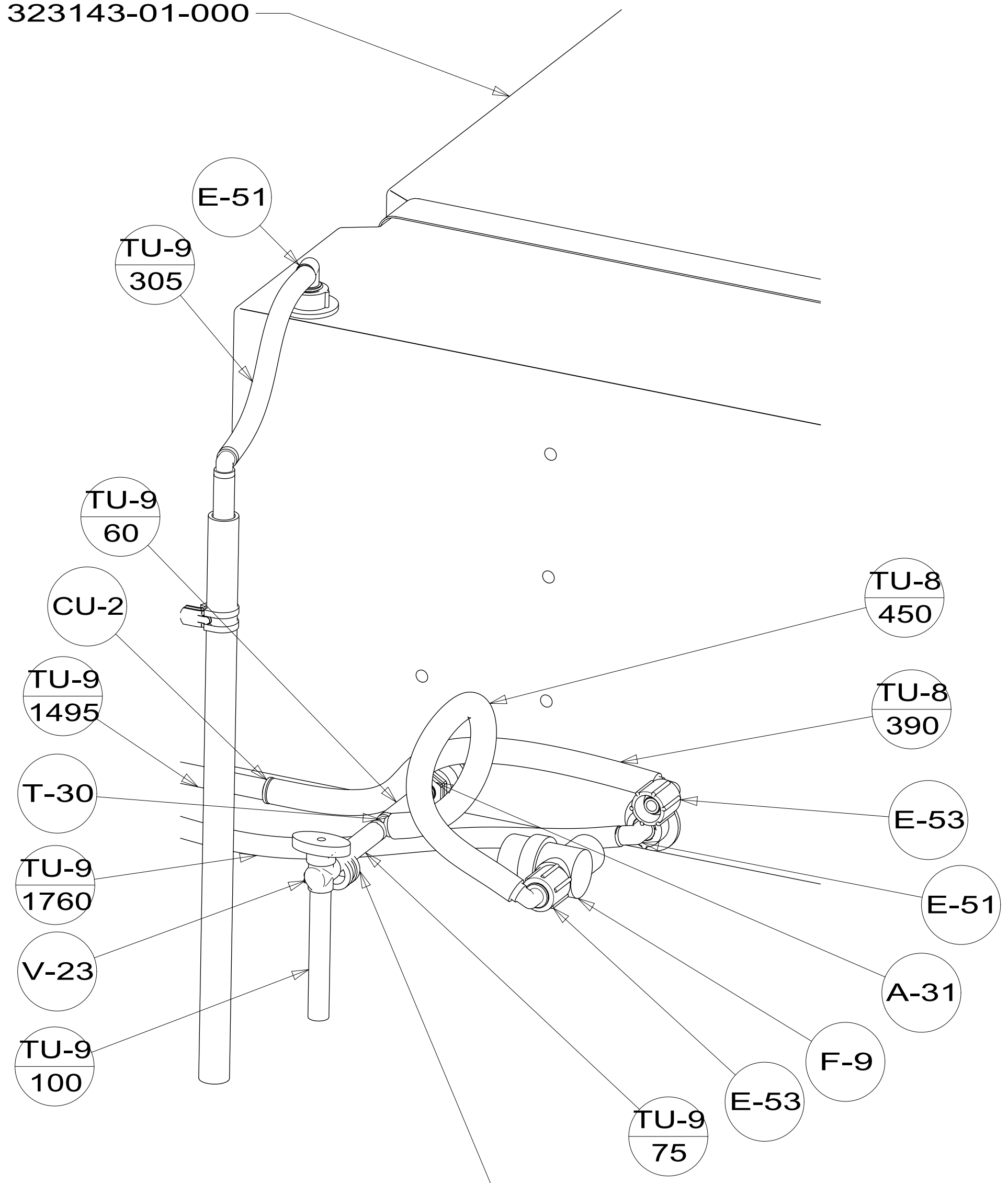
1



D

D

TANK-WATER,44 GAL
000121866 / 323143-01-000



DETAIL DA
(SHOWN W/OUT FLOOR & PUMP-WATER)

C

C



B

B

A

A

| | | |
|--------------------|-------------------------|-----|
| DESCRIPTION: | | |
| WATER SYSTEM INSTL | | |
| SHEET: | ITEM/PART NO: | REV |
| 4 OF 4 | 000040960 / 31960501000 | |

8

7

6

5

4

3

2

1

