

- 13. APPLY 1/4" BEAD OF SILICONE (131264-05-CHT) TO FLANGE BEFORE INSTALLATION AND THEN CAP SEAL SINK/COLIAN COUNTER TOP WITH SILICONE (131264-05-CHT).
- 12. CUT PART TO 90mm.
- 11. PREP THE SURFACE PER MANUFACTURERS INSTRUCTIONS BEFORE APPLYING THE HEATING PAD.
- 10. SEE WIRING INSTL-BODY FOR ELECTRICAL CONNECTION.
- 9. SEE DRAWING 061607 FOR INSTALLATION OF GROMMETS.
- 8. SECURE DRAINAGE PIPES TO CABINET USING WIRE TIE 108046-02-000, AND SCREW 000G67-10-12U AT INTERVALS OF NOT OF NOT MORE THAN 4 FEET APART.
- 7. SECURE VENT PIPE TO FLOOR WITH CLAMP 062401-02-000 (2), SCREW 000G67-10-12U (2), BRACKET 136878-01-CHT (2).
- 6. VENT PIPE MUST PROJECT 51 MIN AND 64 MAX ABOVE ROOF FOR PROPER FIT AND FUNCTION. ADD S-1 (116666-01-CHT SEAL-VENT PIPE) AROUND PIPE ON ROOF BEFORE VENT CAP IS INSTALLED.
- 5. SEAL AROUND SHOWER WITH SILICONE.
- 4. USE SMOOTH PLUMBERS PUTTY 167459-01-000 TO SEAL STRAINER (0.2 PER STRAINER).
- 3. ALL PIPE AND FITTINGS TO BE ASSEMBLED WITH SOLVENT 004020-01-000 (USA), 004020-02-000 (CAN)
- 2. SLOPE OF TRAP ARM MUST BE 6 PER 305 mm.
- 1. SLOPE OF HORIZONTAL PIPING TO BE MINIMUM OF 3 PER 305 mm.

- 093 PREMIUM PACKAGE WITHOUT
- 09A PREMIUM PACKAGE
- 23T DRAINAGE SYSTEM-HEATED
- 265 CODES/STANDARDS-CSA/CMVSS
- 1B1 CODES/STANDARDS USA



|                         |        |                                   |  |
|-------------------------|--------|-----------------------------------|--|
| DSNR:                   |        | ALL DIMENSIONS ARE IN MILLIMETERS |  |
| DIFTR:                  |        | MATERIAL:                         |  |
| UNSPECIFIED TOLERANCES: |        |                                   |  |
| WHOLE DIM (X)           | ± 3    |                                   |  |
| ONE-PLACE (X.X)         | ± 1.5  |                                   |  |
| TWO-PLACE (X.XX)        | ± 0.50 |                                   |  |
| ANGLE                   | ± 1°   |                                   |  |

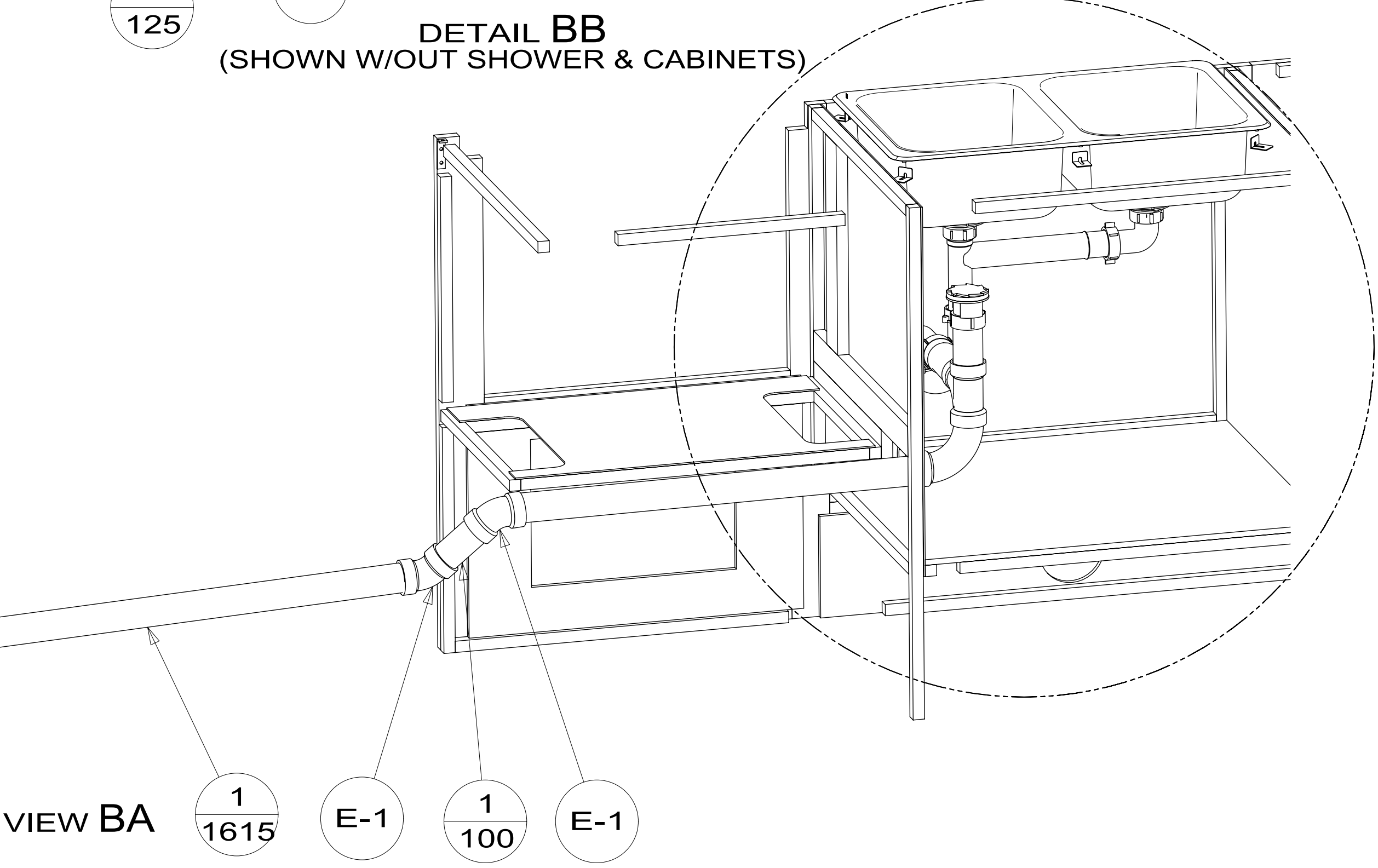
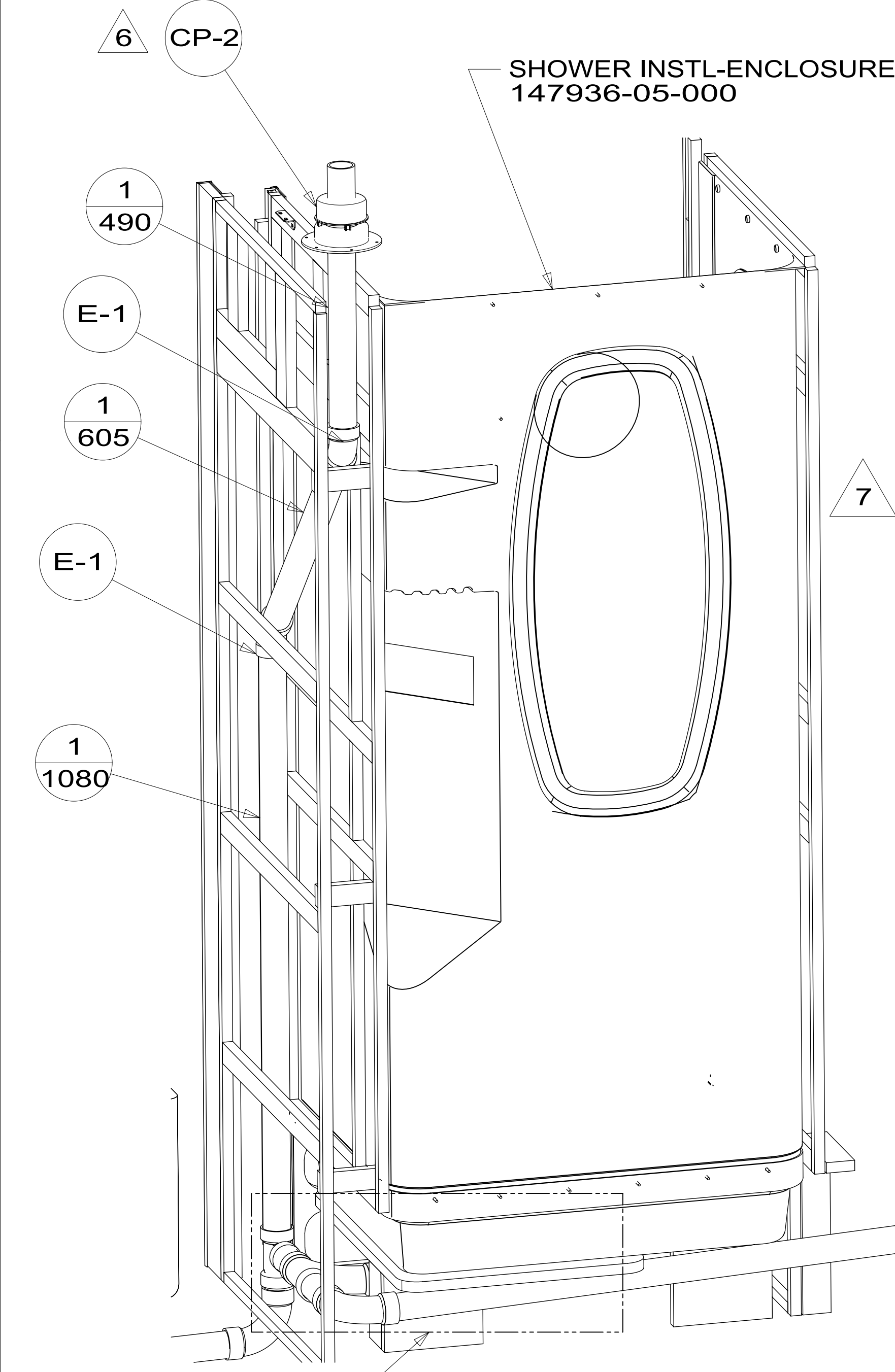
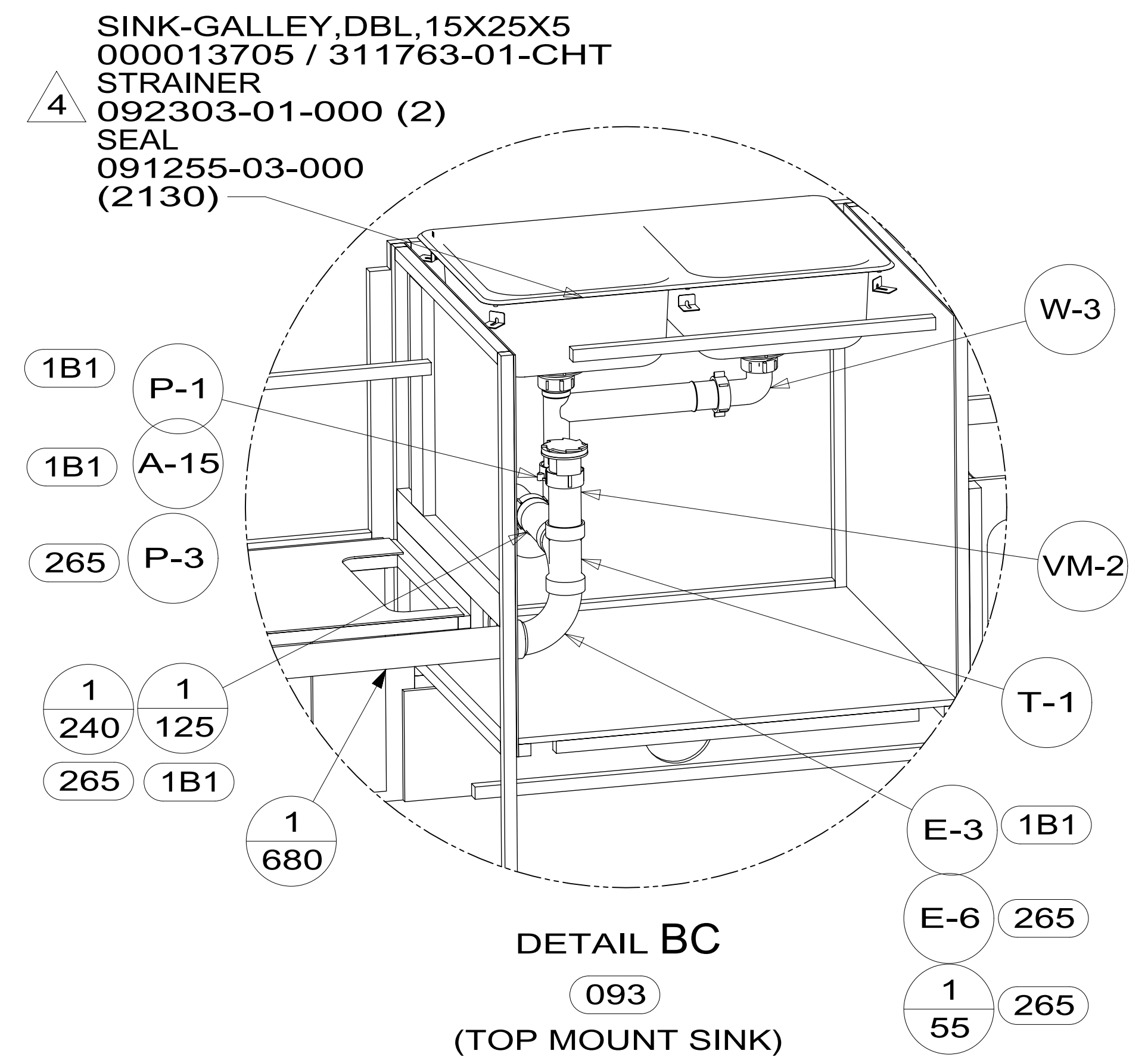
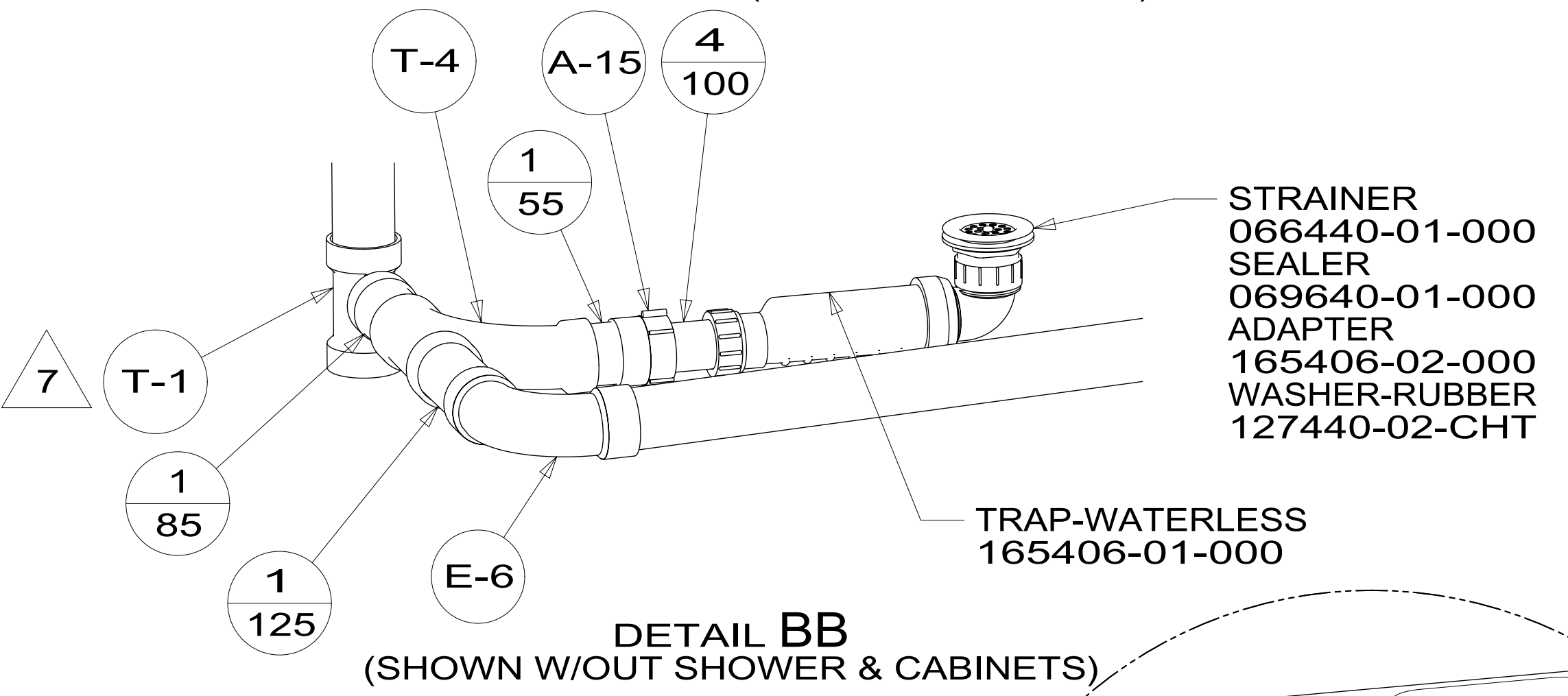
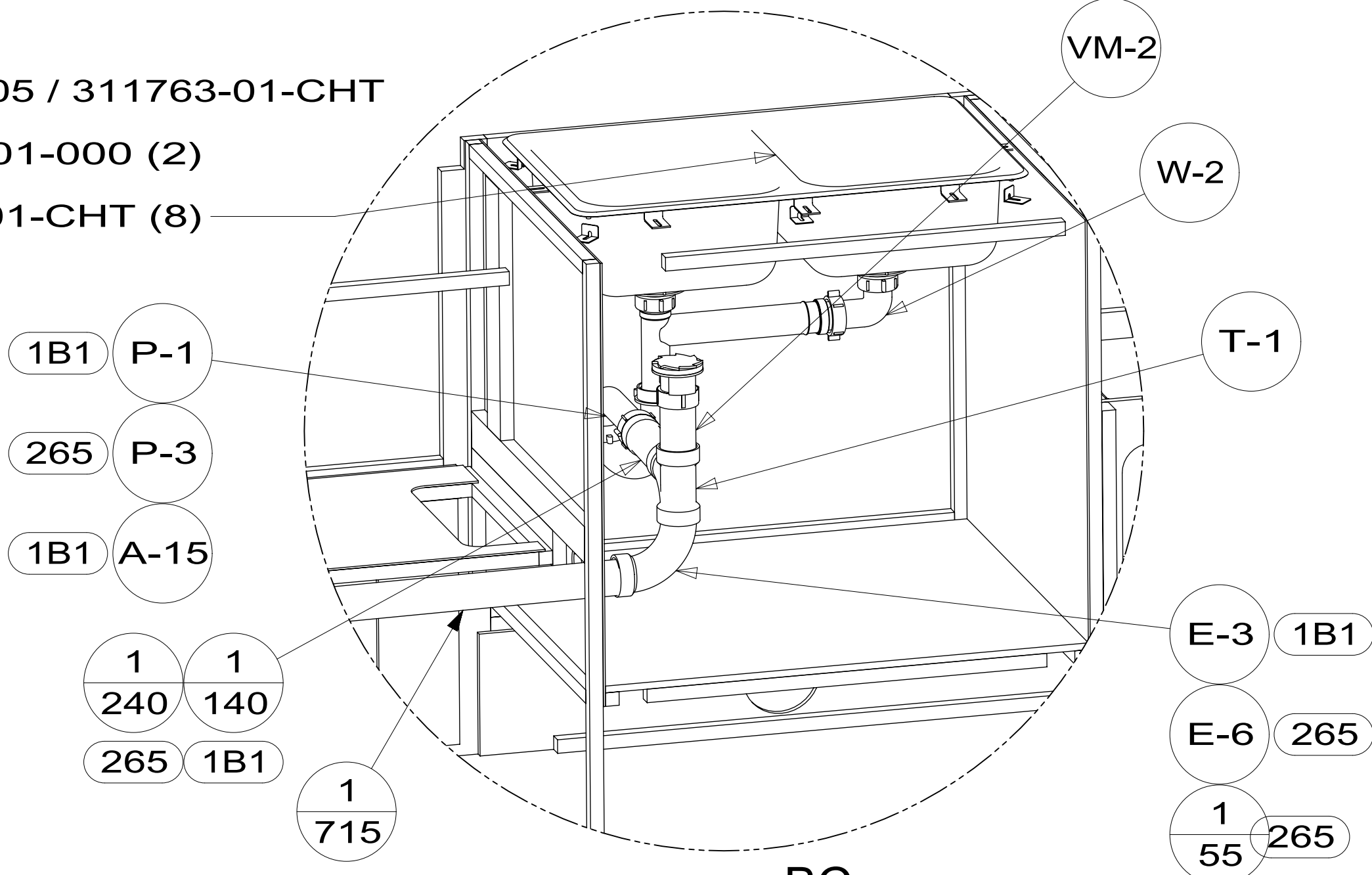
|  |               |                   |
|--|---------------|-------------------|
| REFER TO ES0018 FOR FASTENER TIGHTENING GUIDELINES | WEIGHT: (LBS) | FIRST USED: (REF) |
|  |               | 18 331K           |

X-X  
FOR DRAINAGE CALLOUTS SEE DWG NO. 000211962 / 303370-01-000

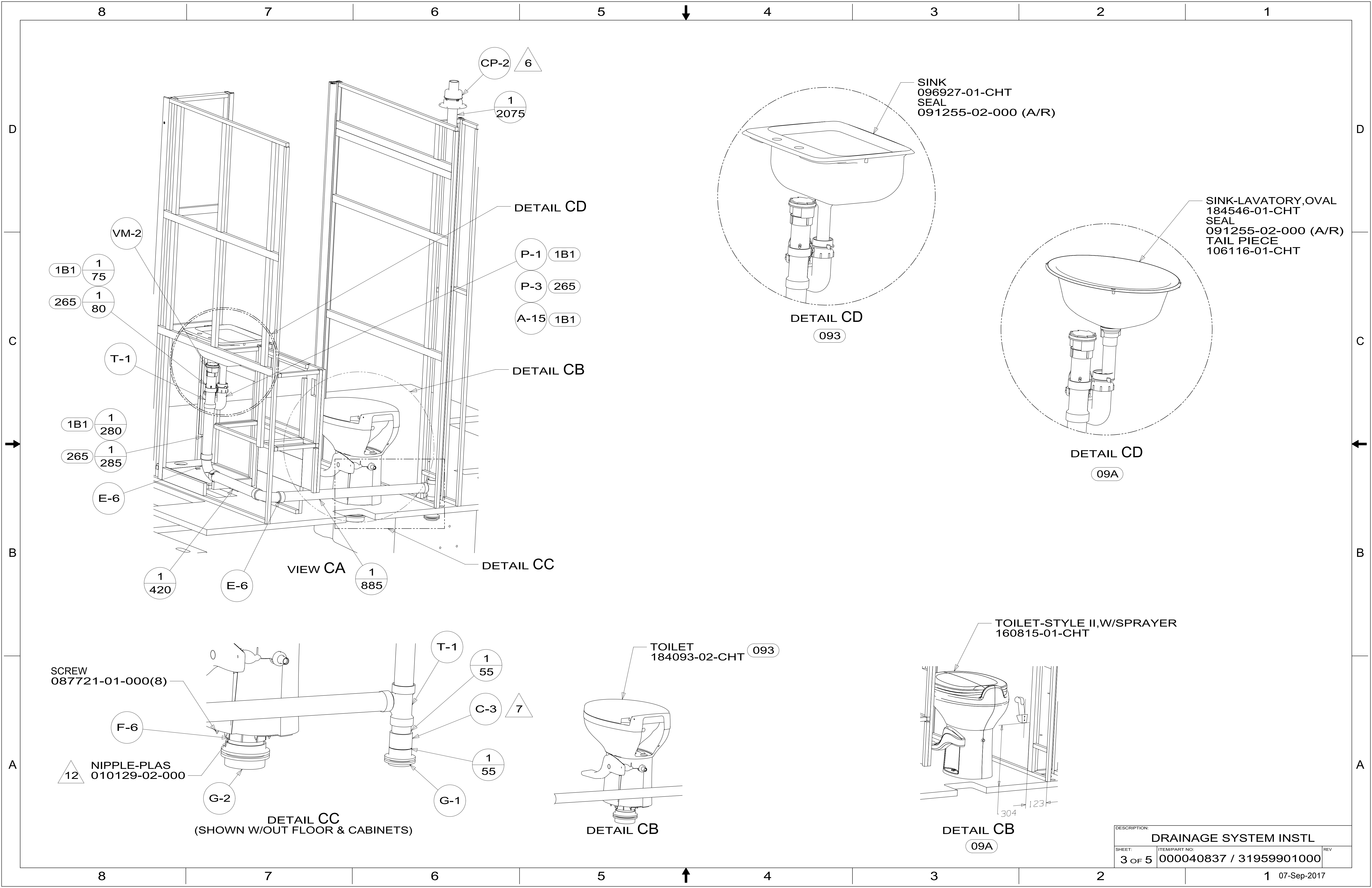
**DRAINAGE SYSTEM INSTL**

|        |                         |      |
|--------|-------------------------|------|
| SHEET: | ITEM/PART NO.:          | REV: |
| 1 OF 5 | 000040837 / 31959901000 |      |

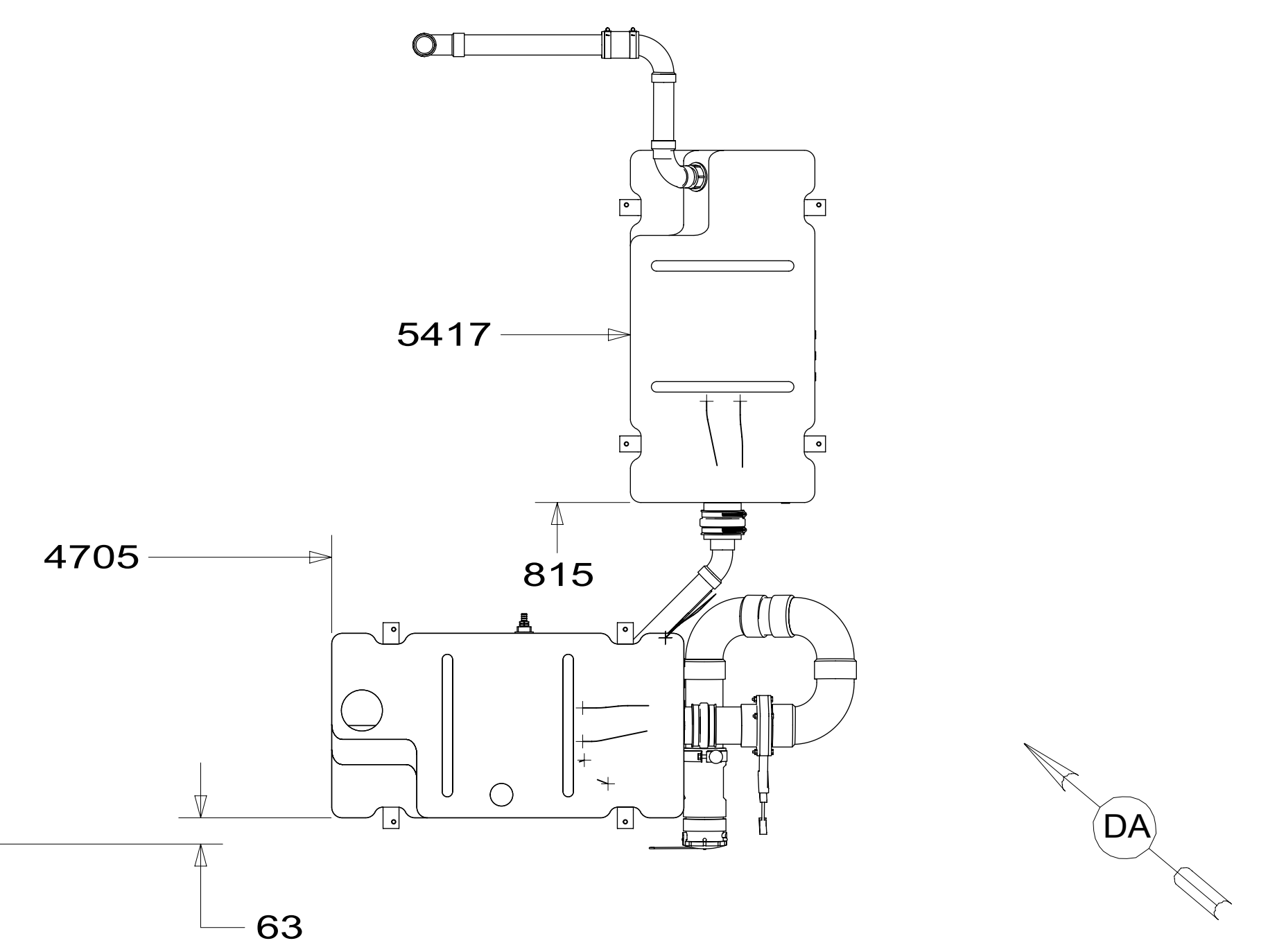
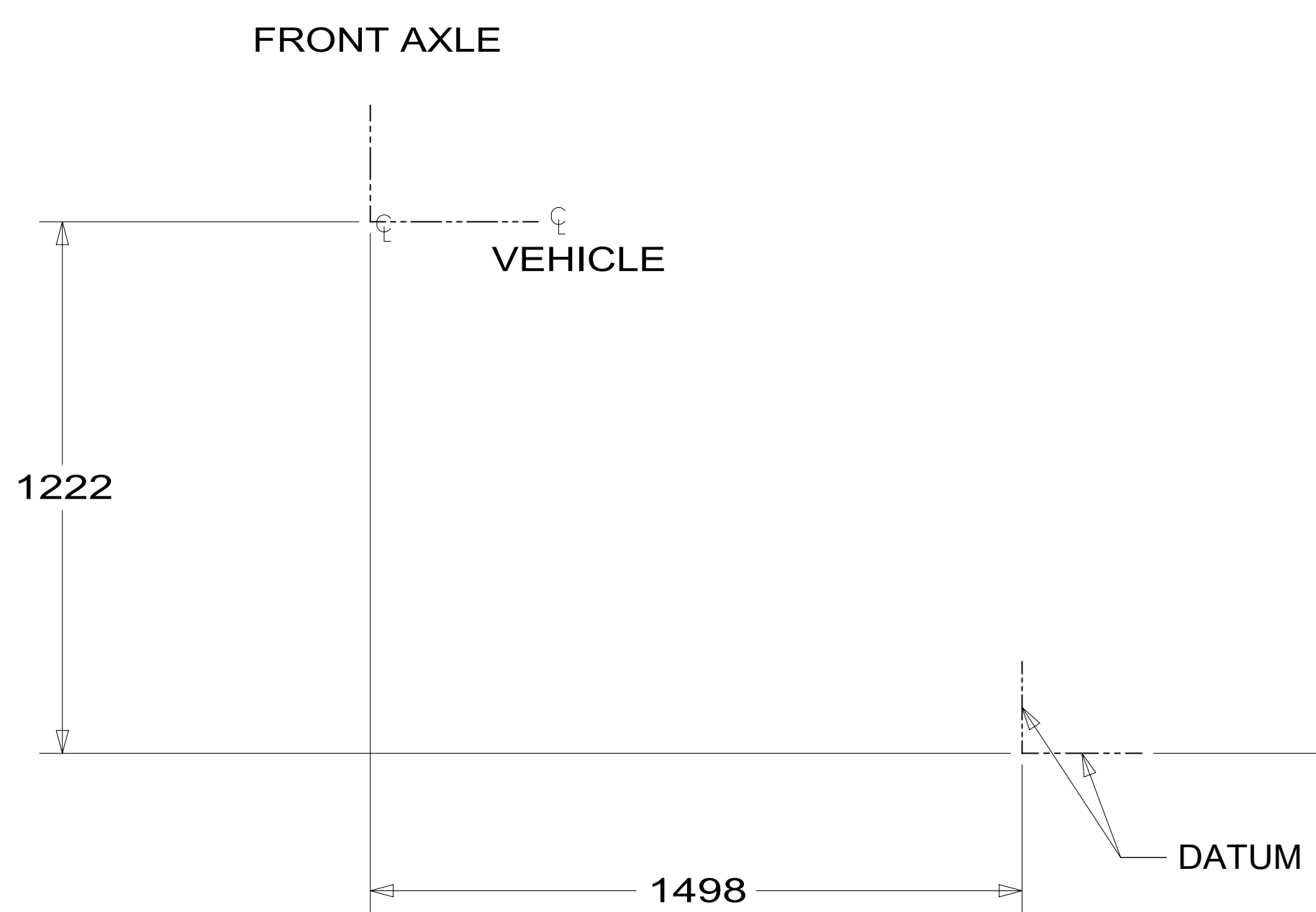
- 13 SINK  
000013705 / 311763-01-CHT
- 4 STRAINER  
092303-01-000 (2)
- ANGLE  
140002-01-CHT (8)



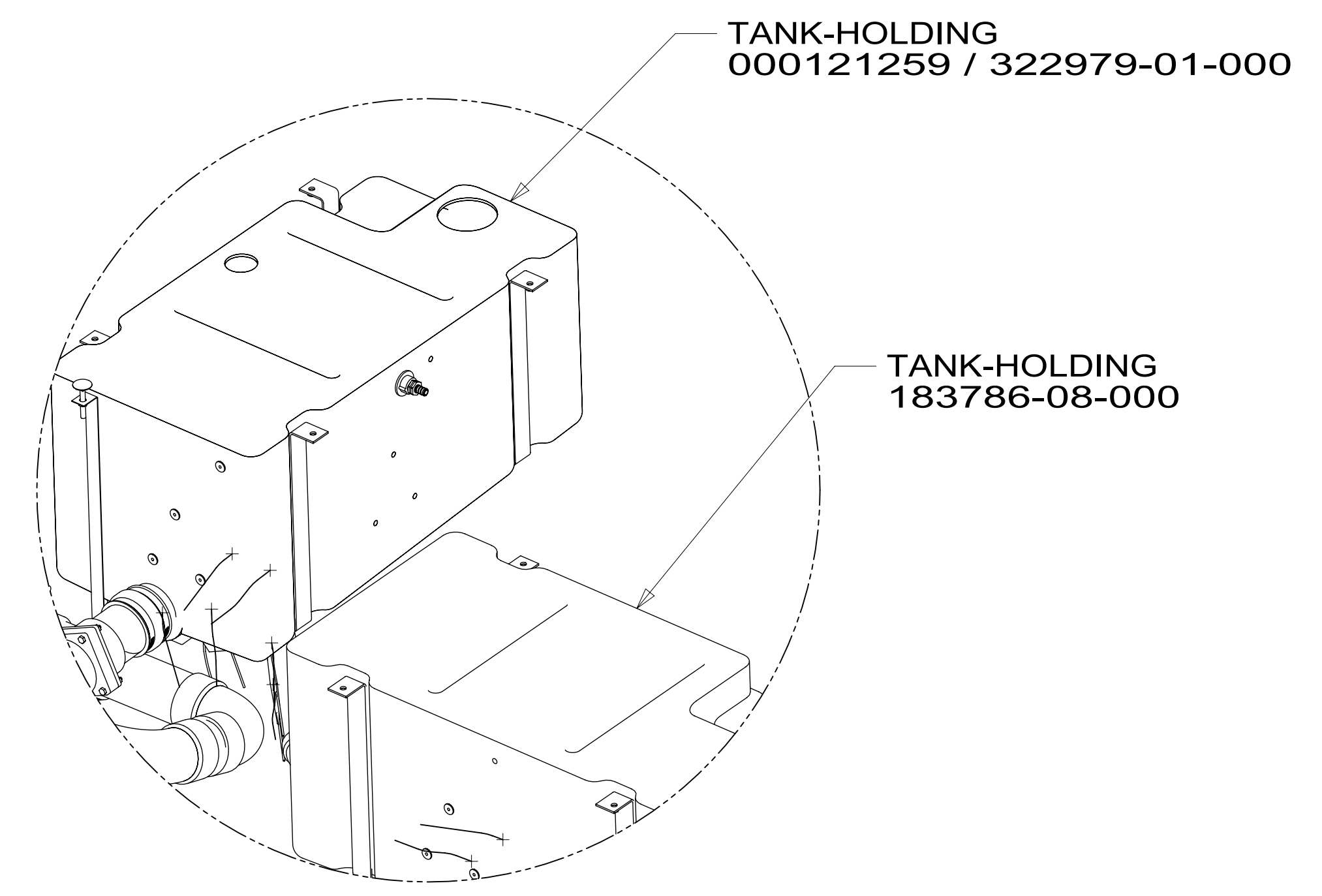
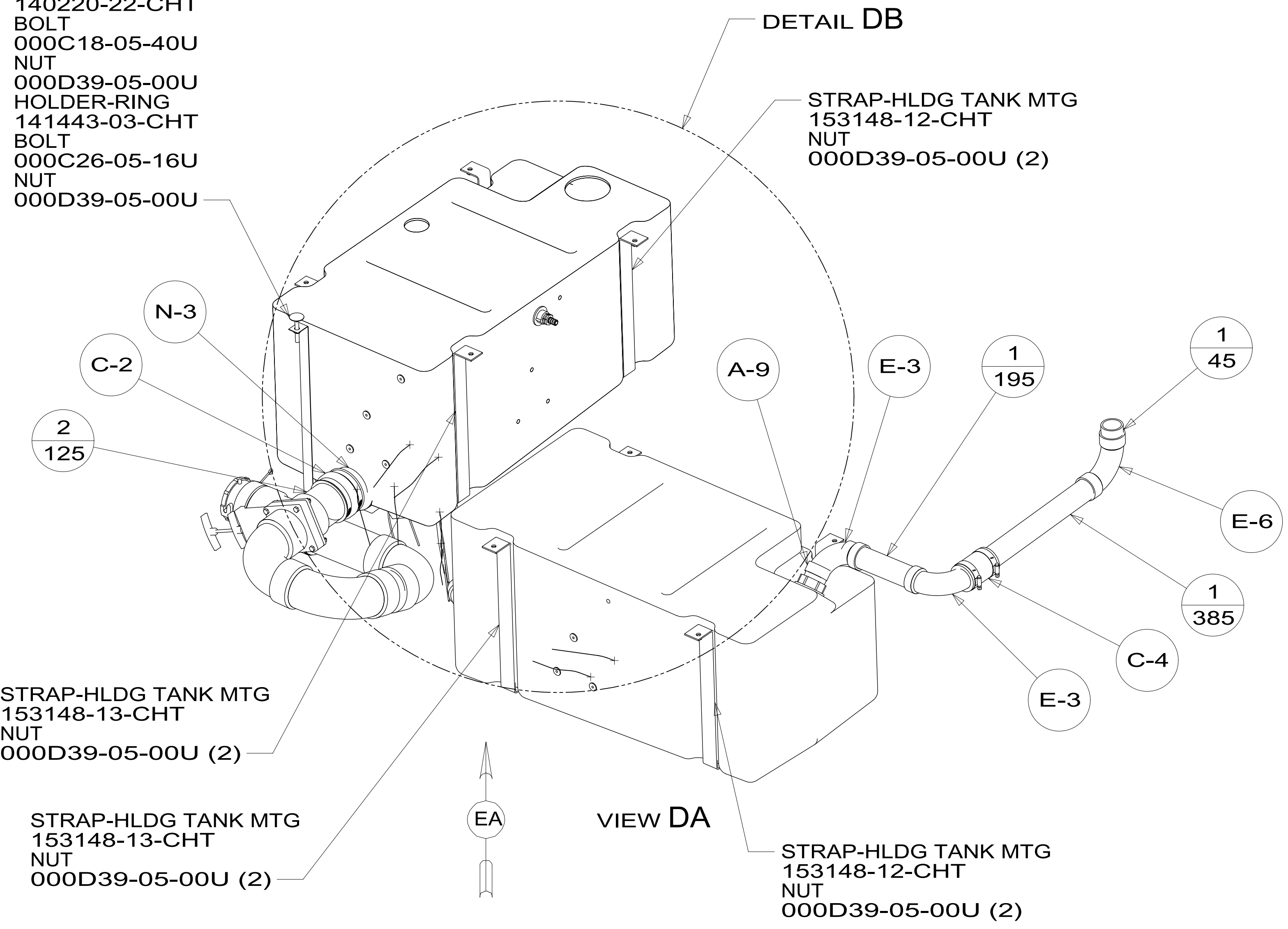
|  |  |     |
|--|--|-----|
| DESCRIPTION:<br><b>DRAINAGE SYSTEM INSTL</b> |  |     |
| SHEET:<br>2 OF 5                             | ITEM/PART NO:<br>000040837 / 31959901000 | REV |



8 7 6 5 4 3 2 1



- HANGER-STRAP  
140220-22-CHT
- BOLT  
000C18-05-40U
- NUT  
000D39-05-00U
- HOLDER-RING  
141443-03-CHT
- BOLT  
000C26-05-16U
- NUT  
000D39-05-00U



DETAIL DB

|  |  |               |
|--|--|---------------|
| DESCRIPTION:<br><b>DRAINAGE SYSTEM INSTL</b> |  |               |
| SHEET:<br>4 OF 5                             | ITEM/PART NO:<br>000040837 / 31959901000 | REV           |
|  |  | 1 07-Sep-2017 |

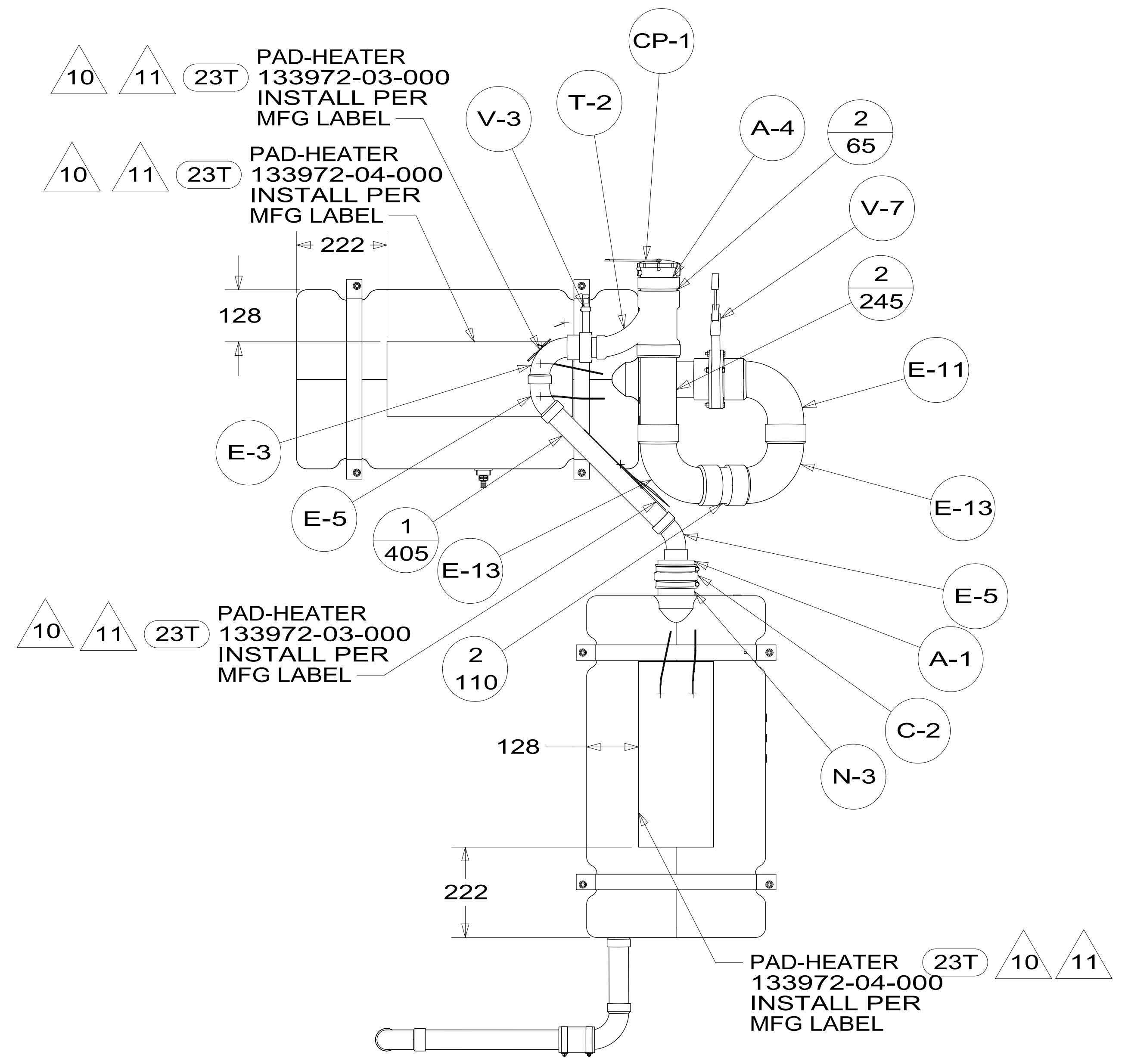
8 7 6 5 4 3 2 1

8 7 6 5 4 3 2 1



D  
C  
B  
A

D  
C  
B  
A



VIEW EA

8 7 6 5 4 3 2 1



|                       |                         |     |
|-----------------------|-------------------------|-----|
| DESCRIPTION:          |                         |     |
| DRAINAGE SYSTEM INSTL |                         |     |
| SHEET:                | ITEM/PART NO:           | REV |
| 5 OF 5                | 000040837 / 31959901000 |     |