

SECTION AB-AB

- NOTES:
- 8 MHP TO INSTALL ON VALVE STEMS PER MANUFACTURER'S INSTRUCTIONS.
  - 7 MOUNT ANTENNA WITH SUPPLIED BRACKET AND SCREWS. ROUTE ANTENNA WIRE ALONG D/S FRAME RAIL AND SECURE WITH OTHER LOOMS. ROUTE UP D/S A-PILLAR AND COIL EXCESS AT TOP.
  - 6 CLAMP 83610-01-000, SCREW G39-08-12U
  - 5 CLAMP 10497-03-000, SCREW G39-08-12U
  - 4 USE TIE-WIRE 8343-04-000 TO SECURE WIRES TO FLOOR SUPPORT FRAME AT LEAST ONCE EVERY 600MM.
  - 3 REST WIRE IN FRAME RAIL WHEN APPLICABLE.
  - 2 SEE WIRING INSTL-FRONT END FOR ADDITIONAL INFORMATION.
  - 1 SEE WIRE ASM-CHASSIS FOR ADDITIONAL INFORMATION.

FOR ELECTRICAL TORQUE SPECIFICATIONS SEE DWG NO. 128783-01-000

FOR ELECTRICAL CALLOUTS SEE DWG NO. 121339-01-000

- 265 CODES/STANDARDS-CSA/CMVSS
- 1B1 CODES/STANDARDS USA
- 1B1 265

<b>WINNEBAGO</b> COPYRIGHT 2016 WINNEBAGO INDUSTRIES, INC.		ALL DIMENSIONS ARE IN MILLIMETERS
DSNR:		
DFFR:		MATERIAL:
UNSPECIFIED TOLERANCES:		WEIGHT: (LBS)
WHOLE DIM (X) :	3	FIRST USED:
ONE-PLACE (X.X) :	1.5	18 R45DL
TWO-PLACE (X.XX) :	0.50	
ANGLE :	1°	
REFER TO ES0018 FOR FASTENER TIGHTENING GUIDELINES		
<b>DESCRIPTION:</b>		
<b>WIRING INSTL-CHASSIS</b>		
SHEET:	ITEM/PART NO.:	REV:
1 OF 7	000040513 / 32019301000	
REF:		

8

7

6

5

4

3

2

1



		ITEM
CABLE ASM (YEL) FROM COACH BATTERY FUSE TO STUD-JUMP START,RED	175207-52-077	1
CABLE ASM (YEL) FROM STUD-JUMP START,RED TO COACH SIDE OF AUX START SOLENOID	175207-52-003	2
CABLE ASM (ORG) FROM COACH BATTERY TO INVERTER FUSE	175207-66-005	3
CABLE ASM (BLK) FROM STUD-JUMP START,BLK TO FRAME RAIL GROUND	175211-01-012	4
CABLE ASM (ORG) FROM INVERTER FUSE TO INVERTER DISCONNECT	175207-67-024	5
CABLE ASM (ORG) FROM INVERTER DISCONNECT TO INVERTER	175207-65-004	17
CABLE ASM (BLK) FROM BATTERY TO INVERTER	175211-01-027	6
CABLE ASM (BLK) FROM COACH BATTERY TO FRAME RAIL GROUND	175211-02-075	7
CABLE ASM (PUR) FROM DISCONNECT SOLENOID TO CHASSIS FUSE PANEL	175207-15-010	8
CABLE ASM (PUR) FROM BATTERY SIDE OF DISCONNECT SOLENOID TO CHASSIS BATTERY FUSE	175207-35-007	9
CABLE ASM (BLU) FROM CHASSIS DISCONNECTED POWER FUSE TO LEVELING SYSTEM POWER	141416-26-070	10
CABLE ASM (BLK) FROM LEVELING SYSTEM TO FRAME RAIL GROUND	133567-11-004	1
CABLE ASM (GRN) FROM BAT DISC RELAY TO PASS THRU STUD	175207-42-146	11
CABLE ASM (GRN) FROM PASS THRU STUD TO GENERATOR	175207-42-031	22
CABLE ASM (BLK) FROM GENERATOR TO FRAME RAIL GROUND	175211-02-022	23
CABLE ASM (YEL) JUMPER BETWEEN POSITIVE POSTS ON COACH BATTERY	141417-52-004	12
	141417-51-002 (4)	13
CABLE ASM (BLK) JUMPER BETWEEN NEGATIVE POSTS ON COACH BATTERY	133568-12-004	14
	133568-11-002 (4)	15
CABLE ASM (RED) JUMPER BETWEEN POSITIVE POSTS IN LEFT FRONT COMPT	141417-32-002	2
CABLE ASM-TEMPERATURE,BATTERY	175385-03-000	16
CABLE ASM (YEL) FROM BATTERY TO BATTERY FUSE	175207-52-007	18
CABLE ASM (PUR) FROM BATTERY TO BATTERY FUSE	CHASSIS SUPPLIED	19
CABLE ASM (YEL) FROM COACH DISCONNECT TO MULTIPLEX BREAKER	141415-57-004	20
CABLE ASM (PUR) FROM CHASSIS DISCONNECT TO MULTIPLEX BREAKER	141415-17-006	21
CABLE ASM (FROM COACH BREAKER TO MULTIPLEX PANEL)	189044-01-035	24
CABLE ASM (FROM CHASSIS BREAKER TO MULTIPLEX PANEL)	189044-02-035	25
CABLE ASM (FROM MULTIPLEX PANEL TO MULTIPLEX PANEL)	189044-01-003	

D

D

C

C

B

B

A

A

- 2 SEE WIRING INSTL-FRONT END FOR ADDITIONAL INFORMATION.
- 1 SEE LEVELING SYSTEM INSTL FOR ADDITIONAL INFORMATION.

NOTES:

265 CODES/STANDARDS-CSA/CMVSS

1B1 CODES/STANDARDS USA

1B1 265

FOR ELECTRICAL TORQUE SPECIFICATIONS SEE DWG NO. 128783-01-000

FOR ELECTRICAL CALLOUTS SEE DWG NO. 121339-01-000

DESCRIPTION: <b>WIRING INSTL-CHASSIS</b>		
SHEET: 2 OF 7	ITEM/PART NO: 000040513 / 32019301000	REV

8

7

6

5

4

3

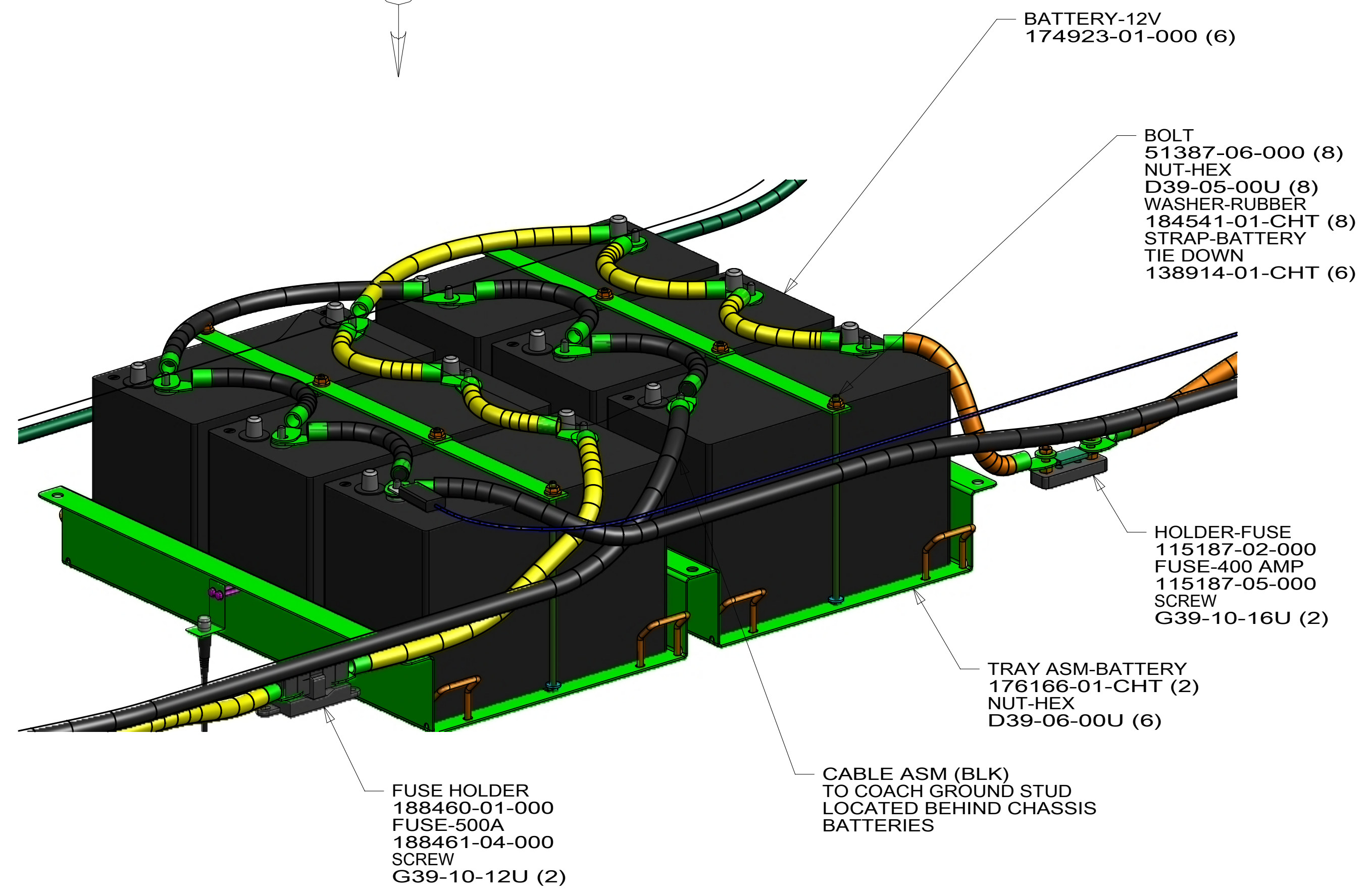
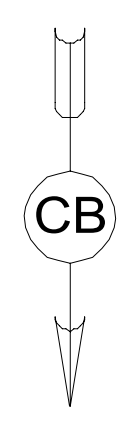
2

1

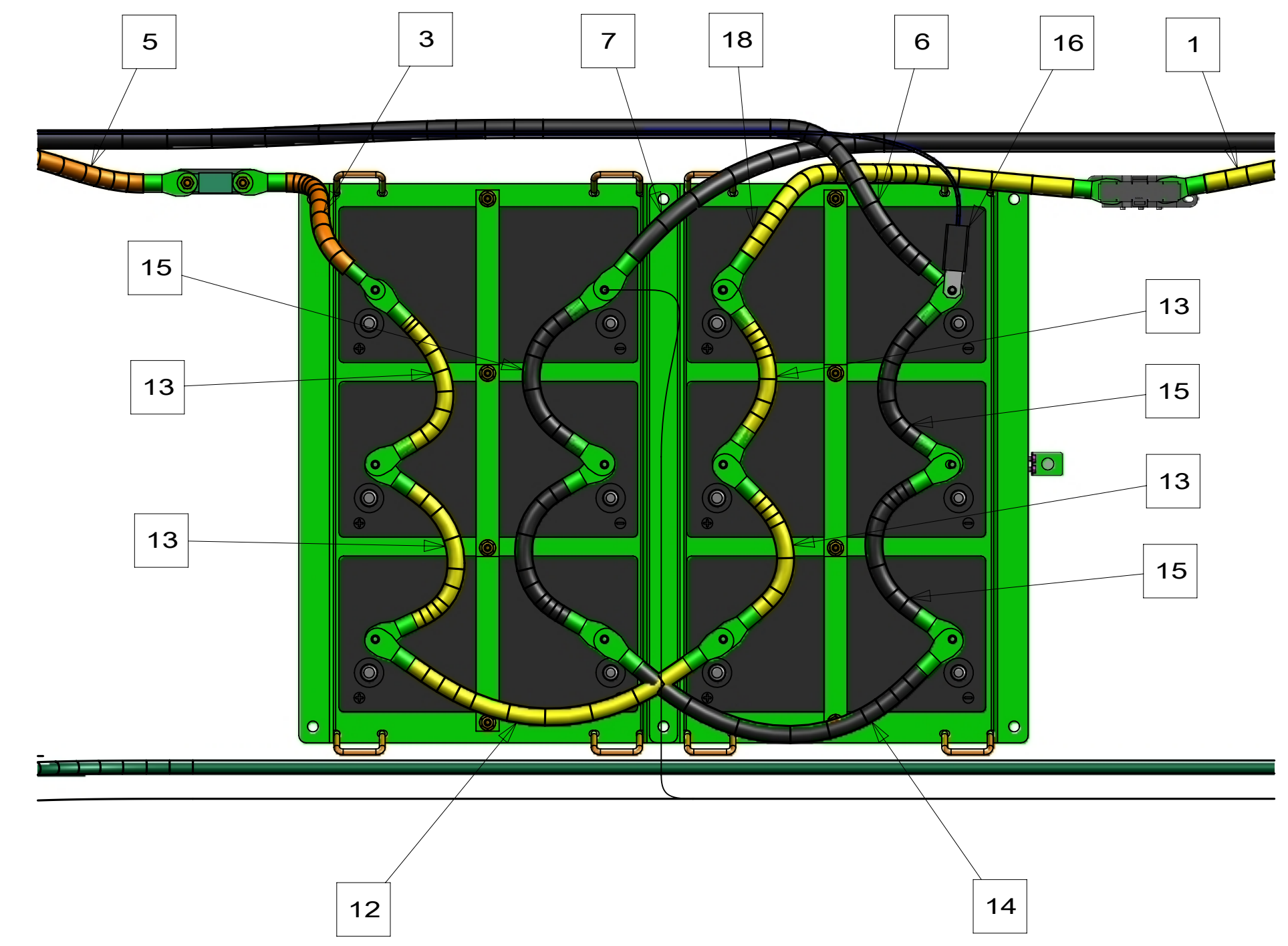


8 7 6 5 4 3 2 1

D  
C  
B  
A



VIEW CA



VIEW CB

265 CODES/STANDARDS-CSA/CMVSS  
1B1 CODES/STANDARDS USA

FOR ELECTRICAL  
TORQUE  
SPECIFICATIONS  
SEE DWG NO.  
128783-01-000

FOR  
ELECTRICAL  
CALLOUTS  
SEE DWG NO.  
121339-01-000

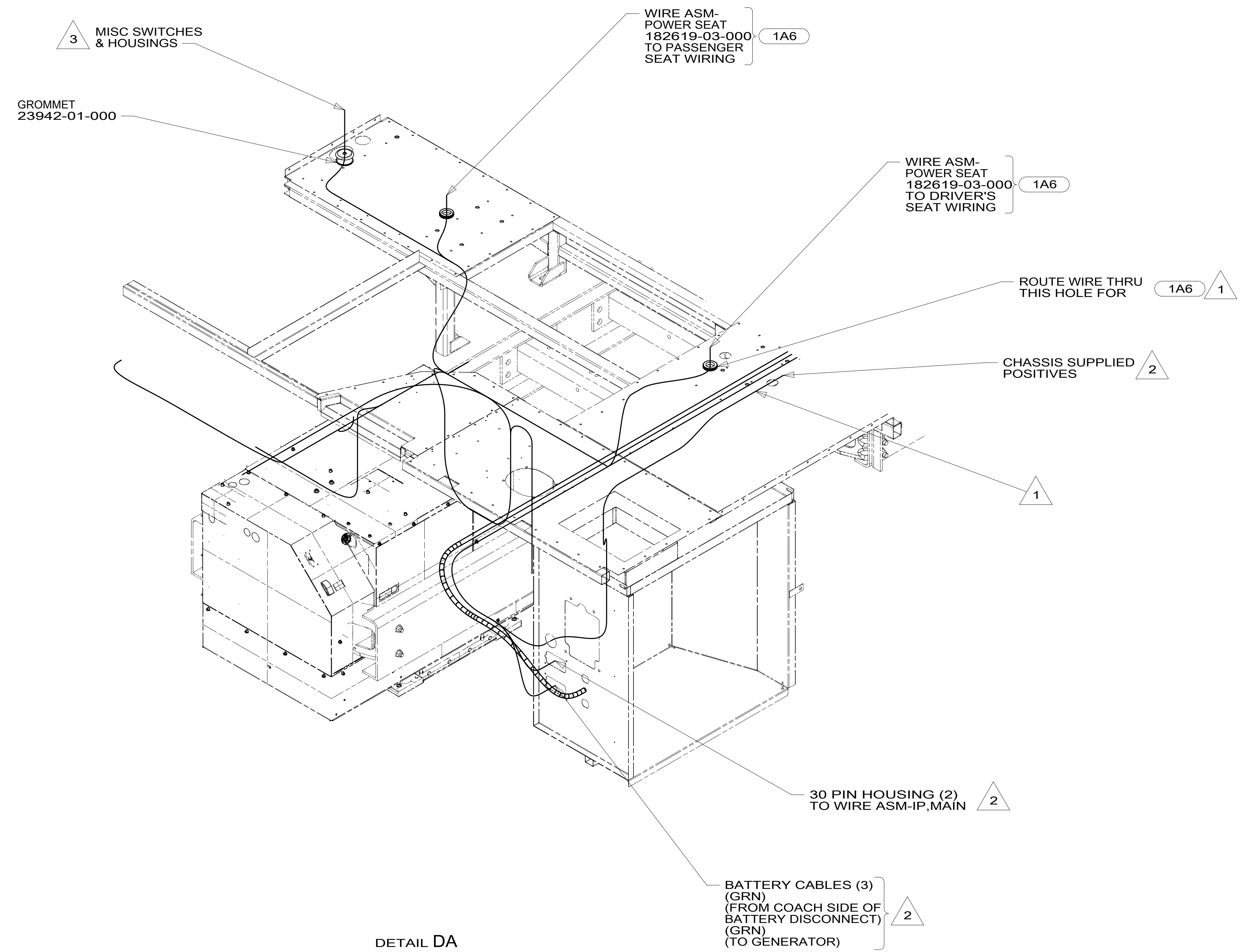
DESCRIPTION:	
1B1 265	
WIRING INSTL-CHASSIS	
SHEET:	ITEM/PART NO:
3 OF 7	000040513 / 32019301000
REV	

8 7 6 5 4 3 2 1 26-Jun-2018



8 7 6 5 4 3 2 1

D  
C  
B  
A



- NOTES:
- 3 SEE WIRE ASM-CHASSIS FOR ADDITIONAL INFORMATION.
  - 2 SEE WIRING INSTL-FRONT END FOR ADDITIONAL INFORMATION.
  - 1 USE PLUG-PLASTIC 61420-12-000 FOR UNUSED HOLE & SEAL.

FOR ELECTRICAL TORQUE SPECIFICATIONS SEE DWG NO. 128783-01-000

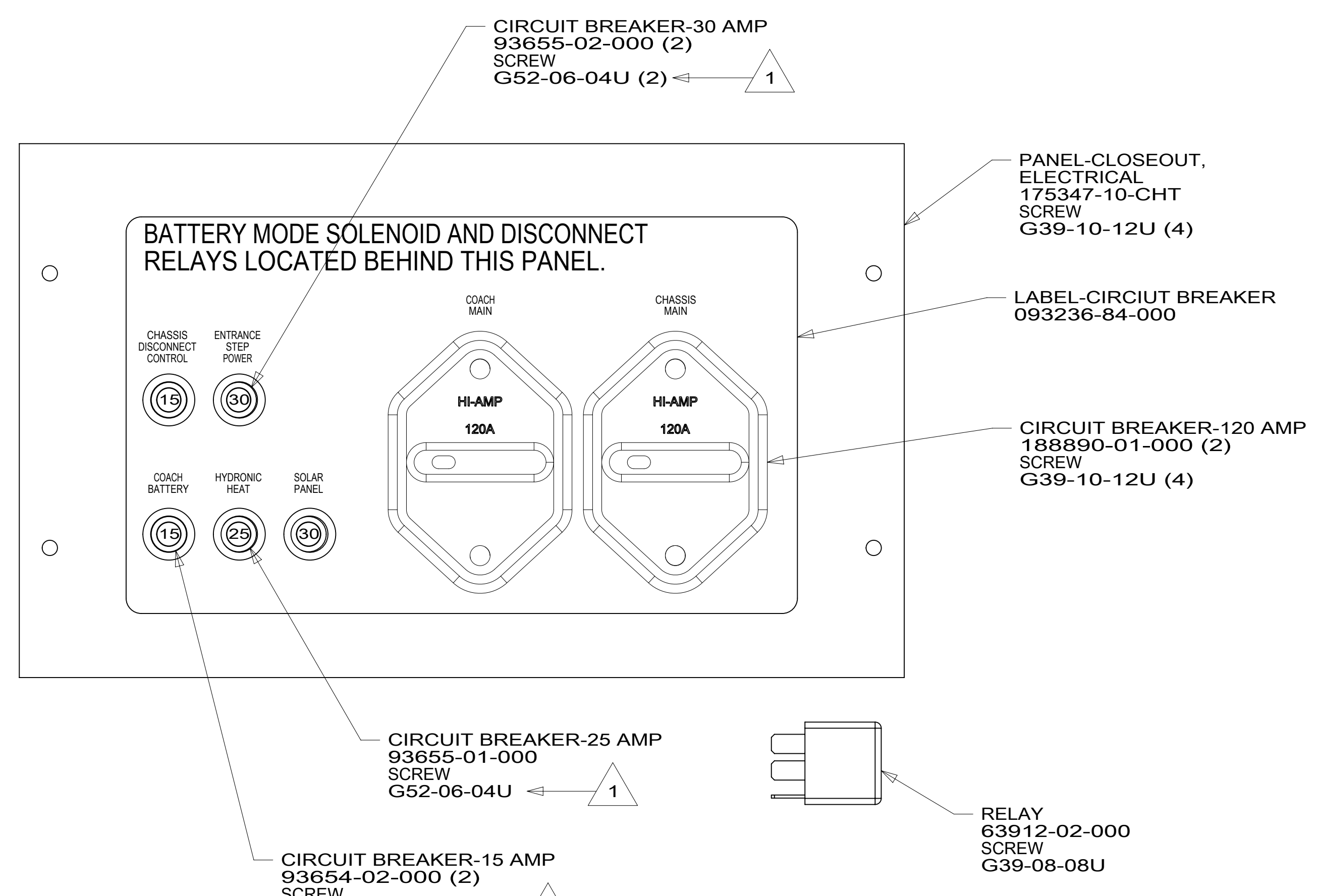
FOR ELECTRICAL CALLOUTS SEE DWG NO. 121339-01-000

- 1A6 SEATS-DRIVER/PASSENGER
- 265 CODES/STANDARDS-CSA/CMVSS
- 1B1 CODES/STANDARDS USA

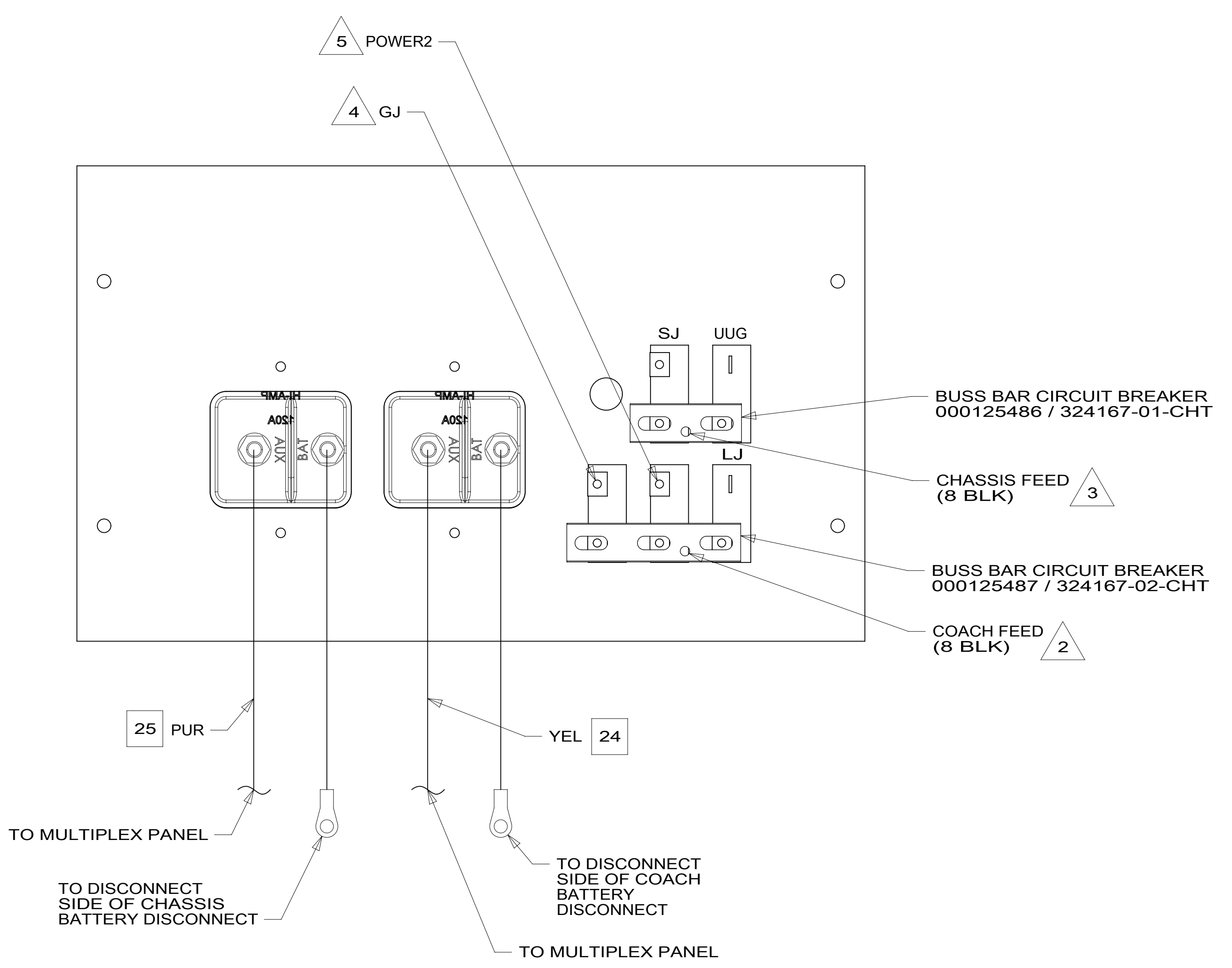
DESCRIPTION: <b>WIRING INSTL-CHASSIS</b>		
SHEET: 4 OF 7	ITEM/PART NO: 000040513 / 32019301000	REV

8 7 6 5 4 3 2 1 26-Jun-2018

8 7 6 5 4 3 2 1



DETAIL EA  
(FRONT VIEW)



DETAIL EA  
(BACK VIEW)

- NOTES:
- 5 MARKED WITH BLUE TAPE.
  - 4 MARKED WITH WHITE TAPE.
  - 3 MARKED WITH GREEN TAPE.
  - 2 MARKED WITH YELLOW TAPE.
  - 1 REPLACE EXISTING SCREW TO PROPERLY ATTACH BREAKER TO BUSS BAR.

FOR ELECTRICAL TORQUE SPECIFICATIONS SEE DWG NO. 128783-01-000

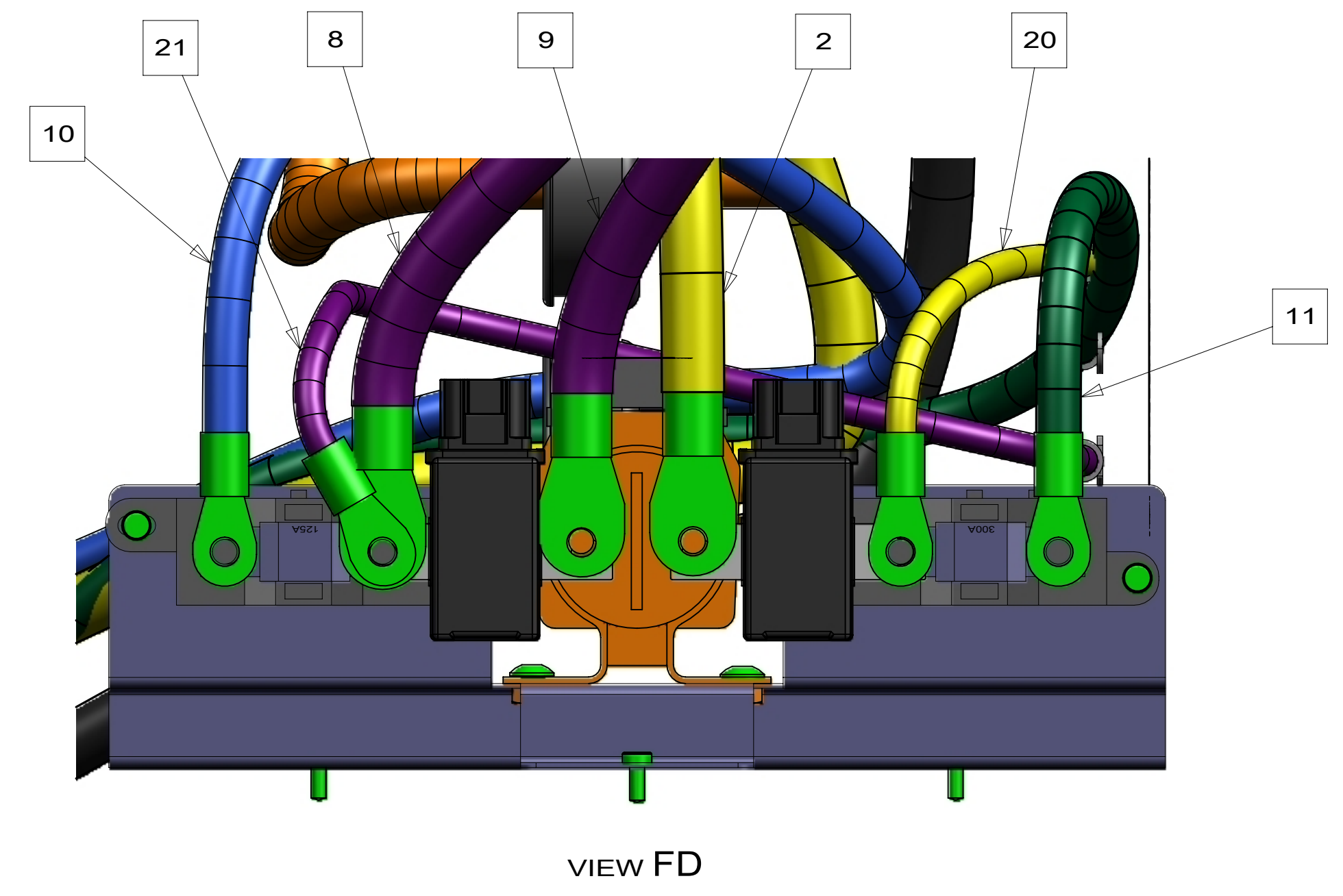
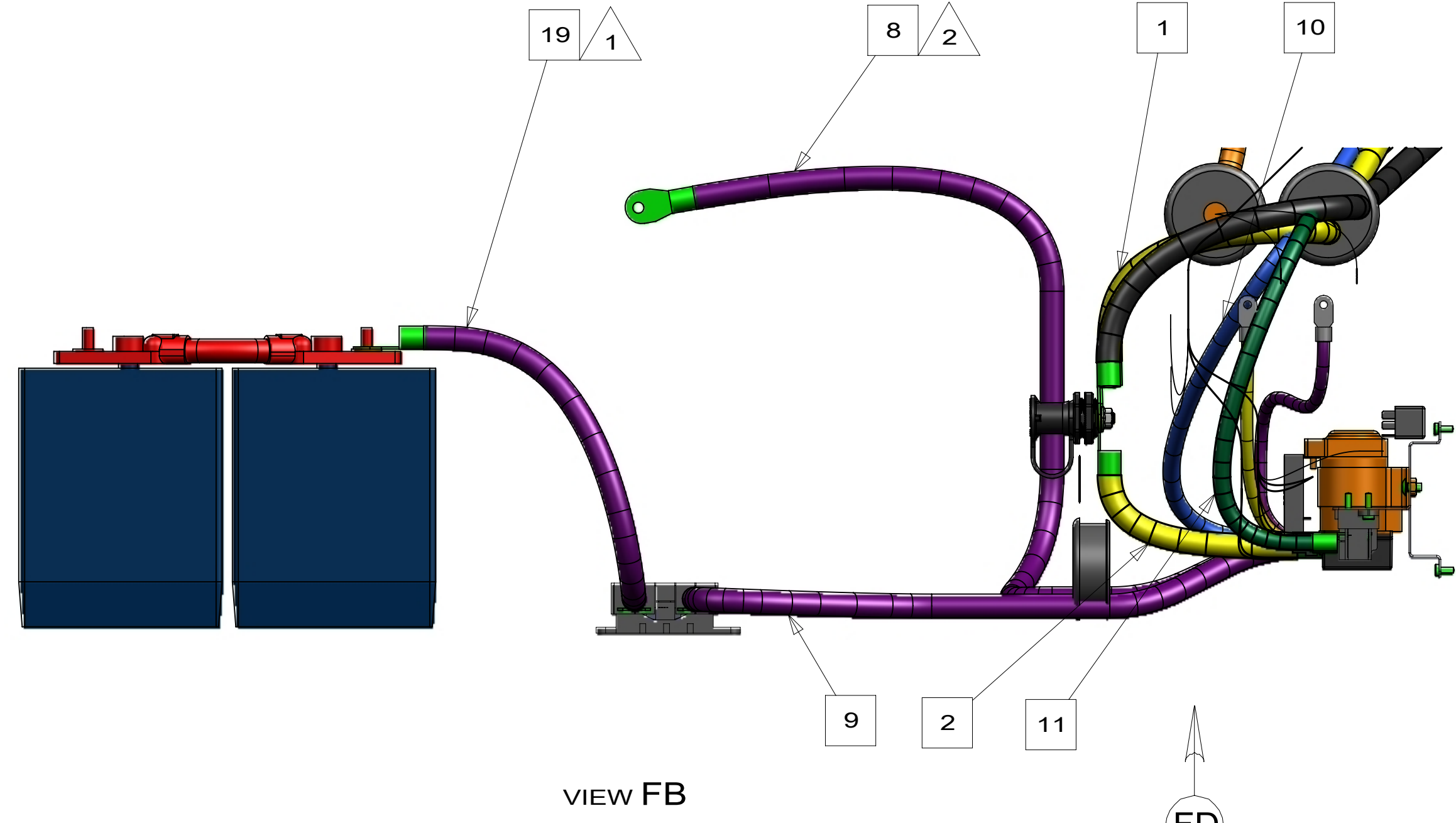
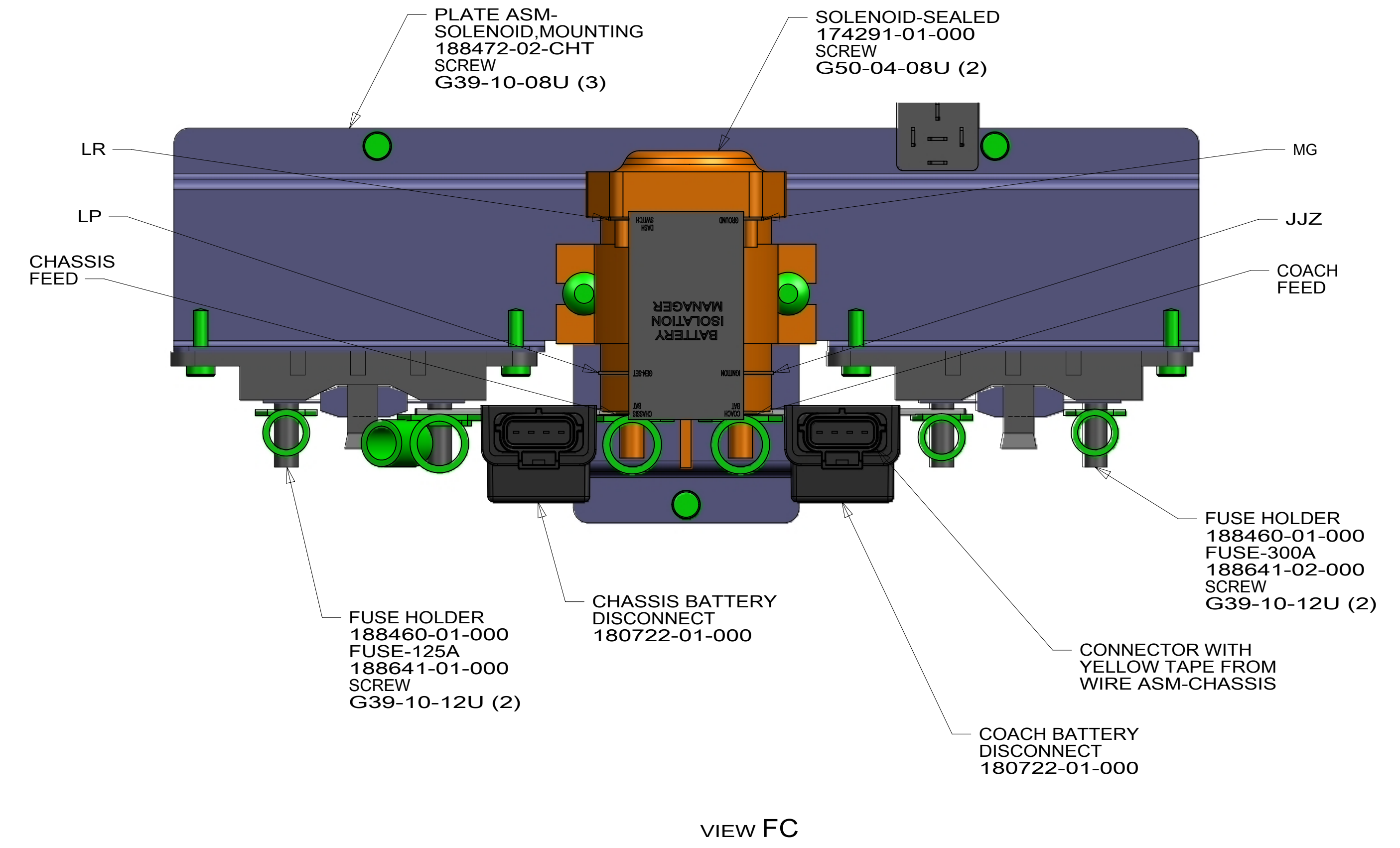
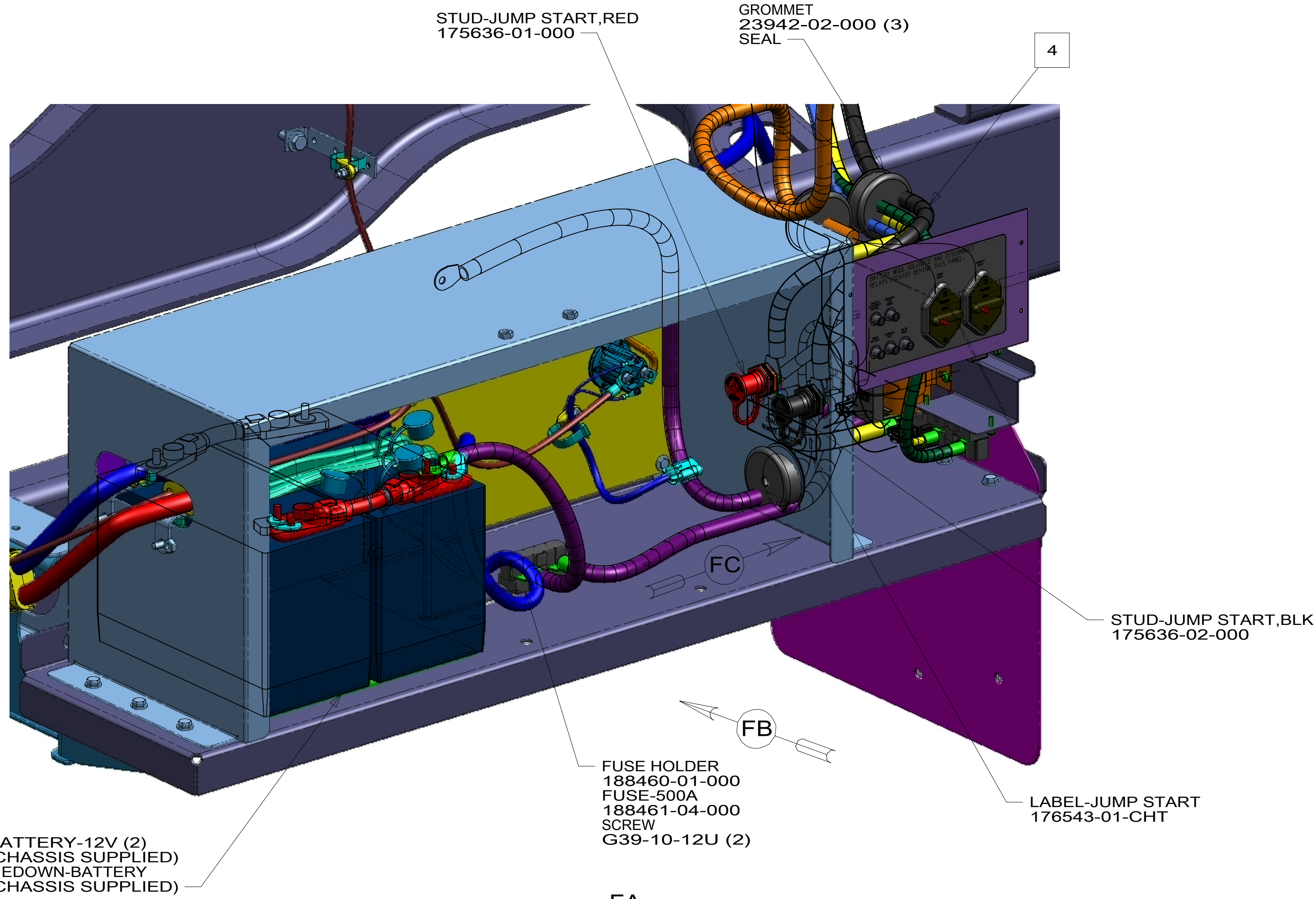
FOR ELECTRICAL CALLOUTS SEE DWG NO. 121339-01-000

265 CODES/STANDARDS-CSA/CMVSS  
1B1 CODES/STANDARDS USA

DESCRIPTION:		1B1 265
<b>WIRING INSTL-CHASSIS</b>		
SHEET:	ITEM/PART NO.:	REV
5 OF 7	000040513 / 32019301000	

8 7 6 5 4 3 2 1 26-Jun-2018





NOTES:

2 PUR CABLE REPLACES CHASSIS SUPPLIED CABLE.

1 REMOVE CABLE FROM CHASSIS PANEL AND INSTALL AS SHOWN ON FUSE.

FOR ELECTRICAL TORQUE SPECIFICATIONS SEE DWG NO. 128783-01-000

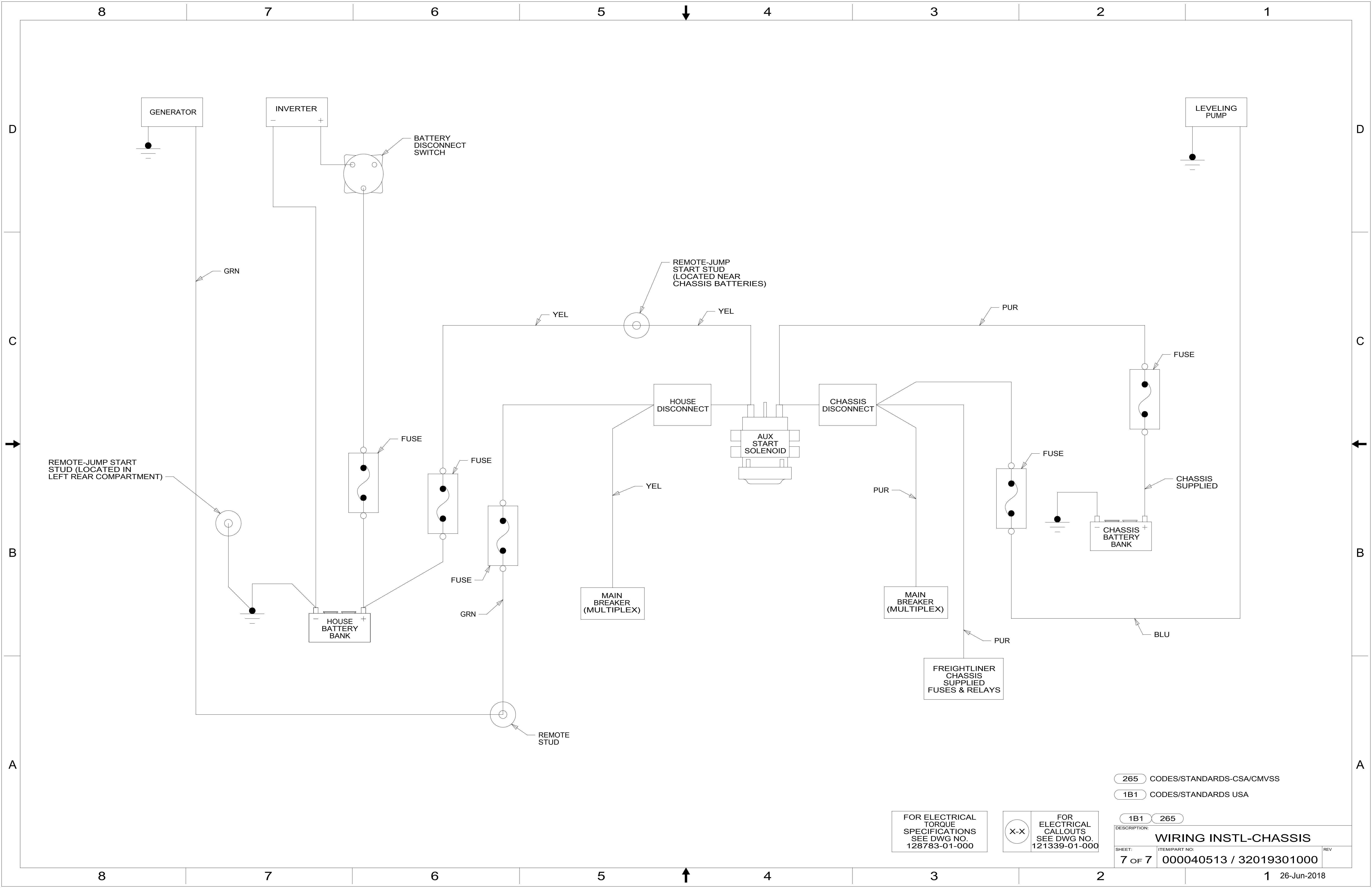
FOR ELECTRICAL CALLOUTS SEE DWG NO. 121339-01-000

265 CODES/STANDARDS-CSA/CMVSS

1B1 CODES/STANDARDS USA

DESCRIPTION:		1B1	265
<b>WIRING INSTL-CHASSIS</b>			
SHEET:	ITEM/PART NO.:	REV	
6 OF 7	000040513 / 32019301000		





265 CODES/STANDARDS-CSA/CMVSS

1B1 CODES/STANDARDS USA

1B1 265

FOR ELECTRICAL TORQUE SPECIFICATIONS SEE DWG NO. 128783-01-000

FOR ELECTRICAL CALLOUTS SEE DWG NO. 121339-01-000

DESCRIPTION:  
**WIRING INSTL-CHASSIS**  
 SHEET: 7 OF 7 ITEM/PART NO.: 000040513 / 32019301000 REV