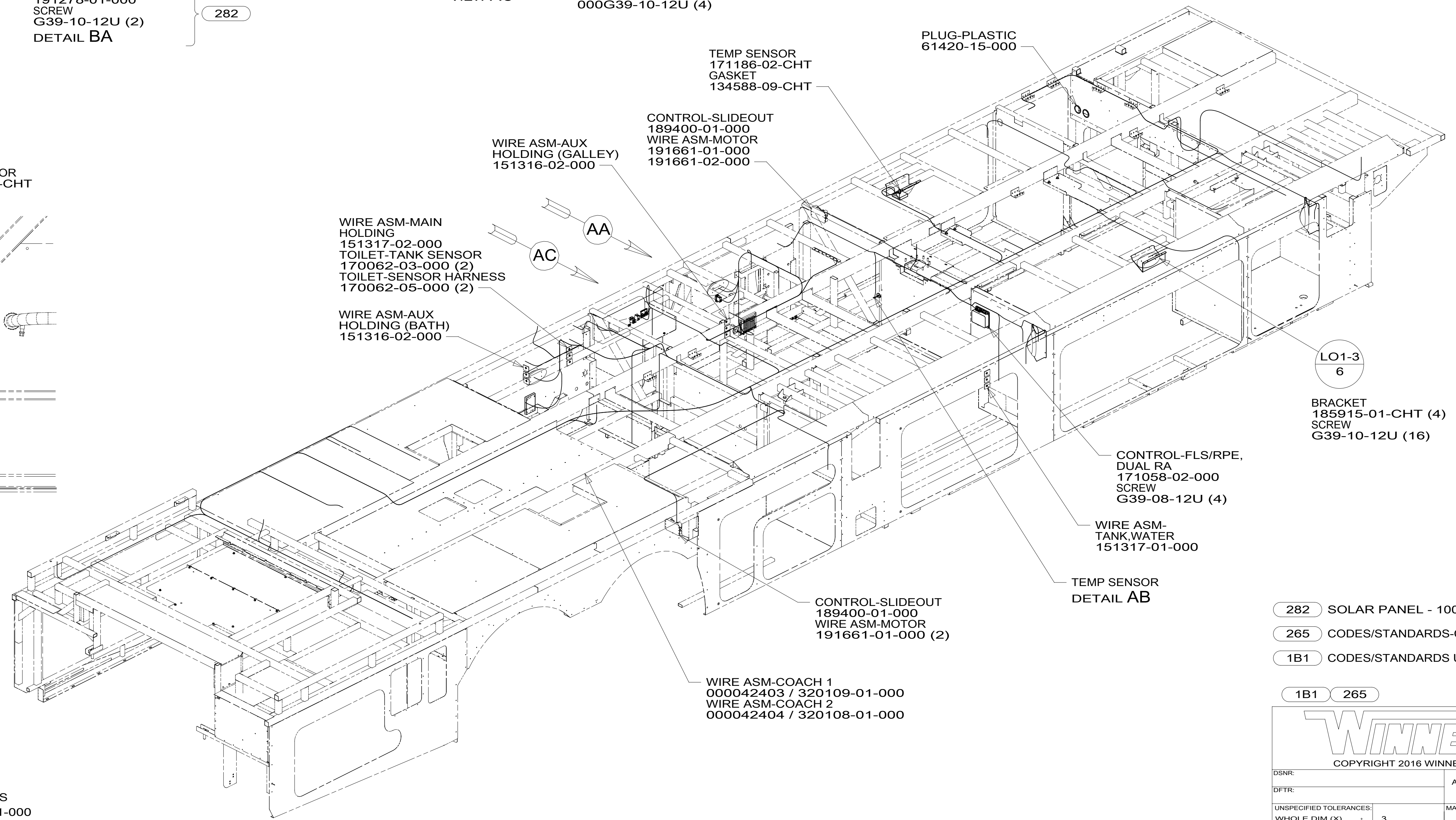
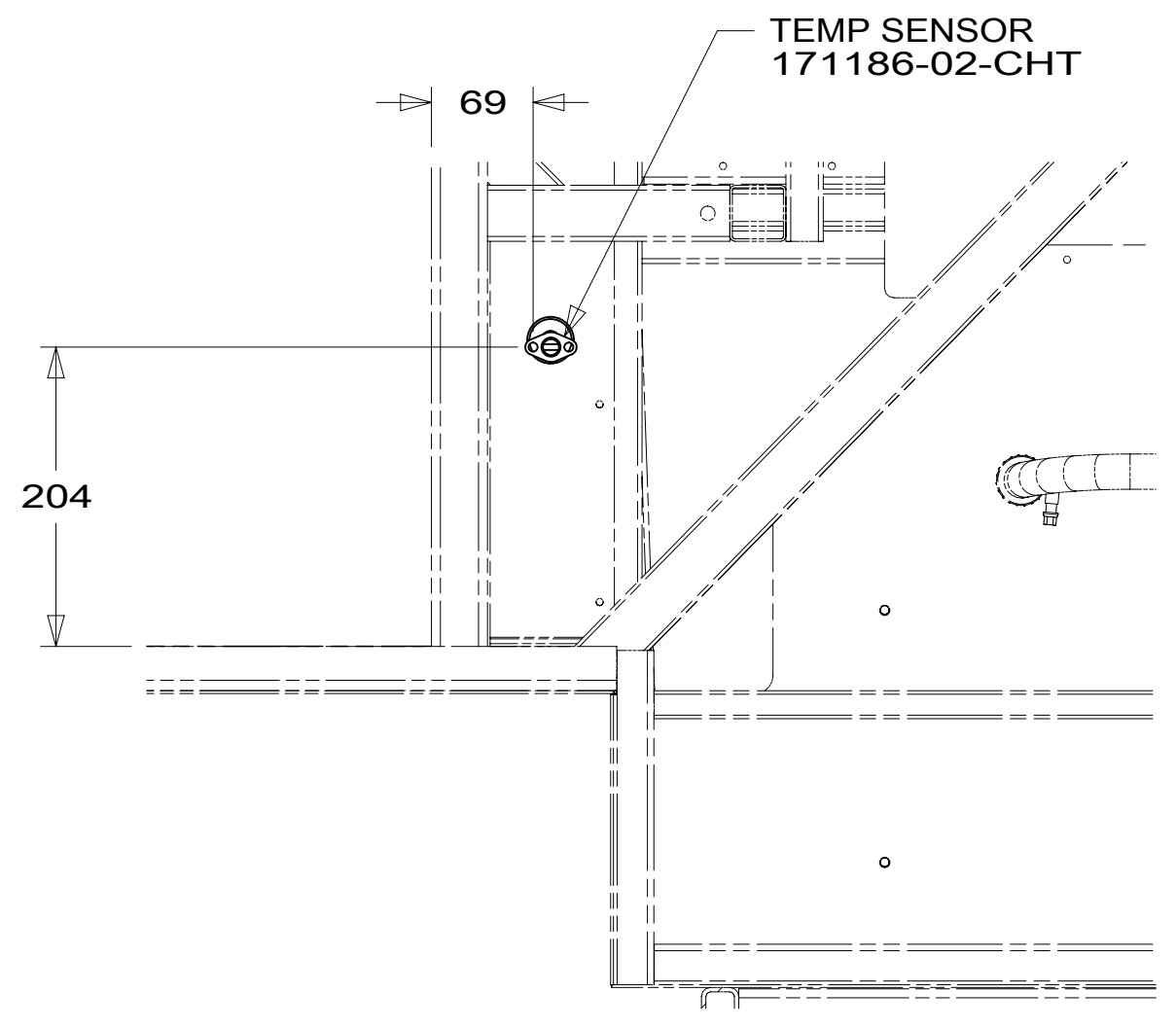
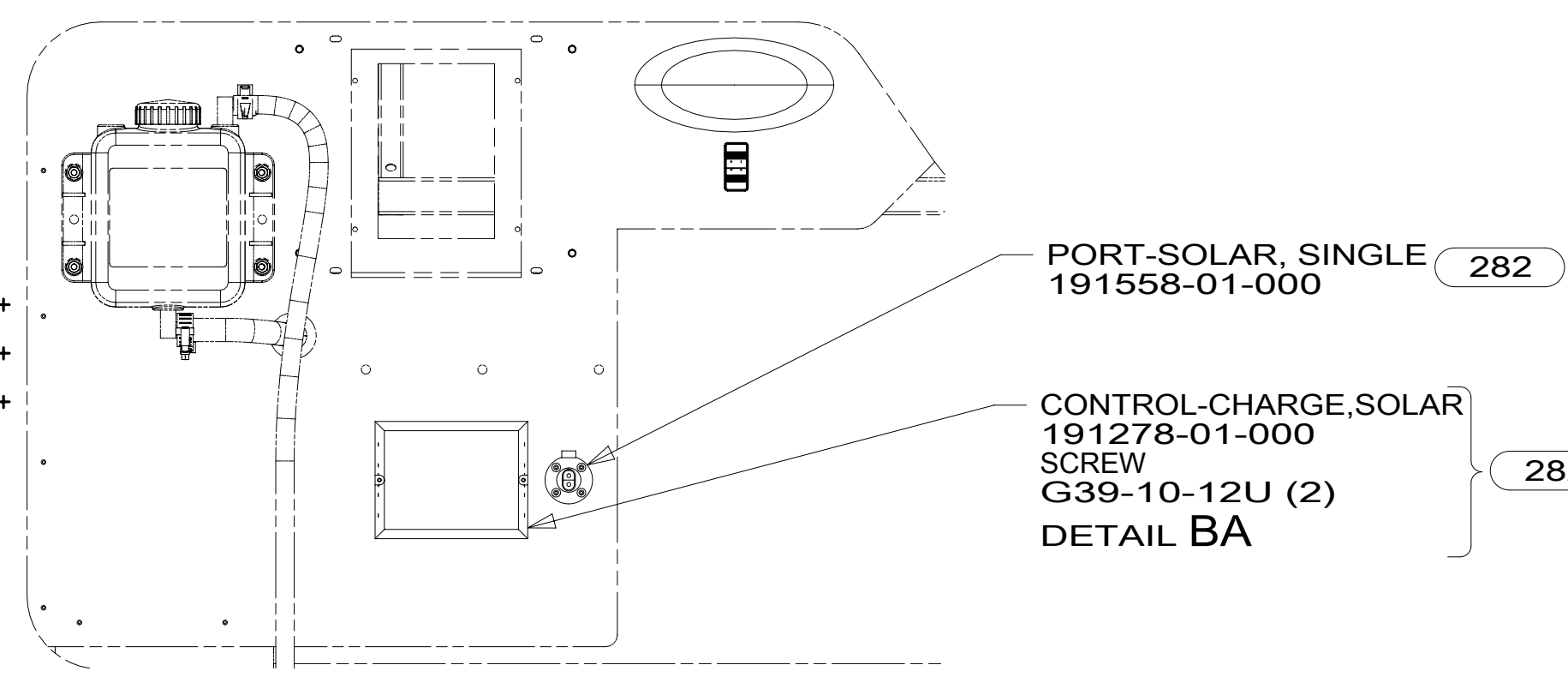
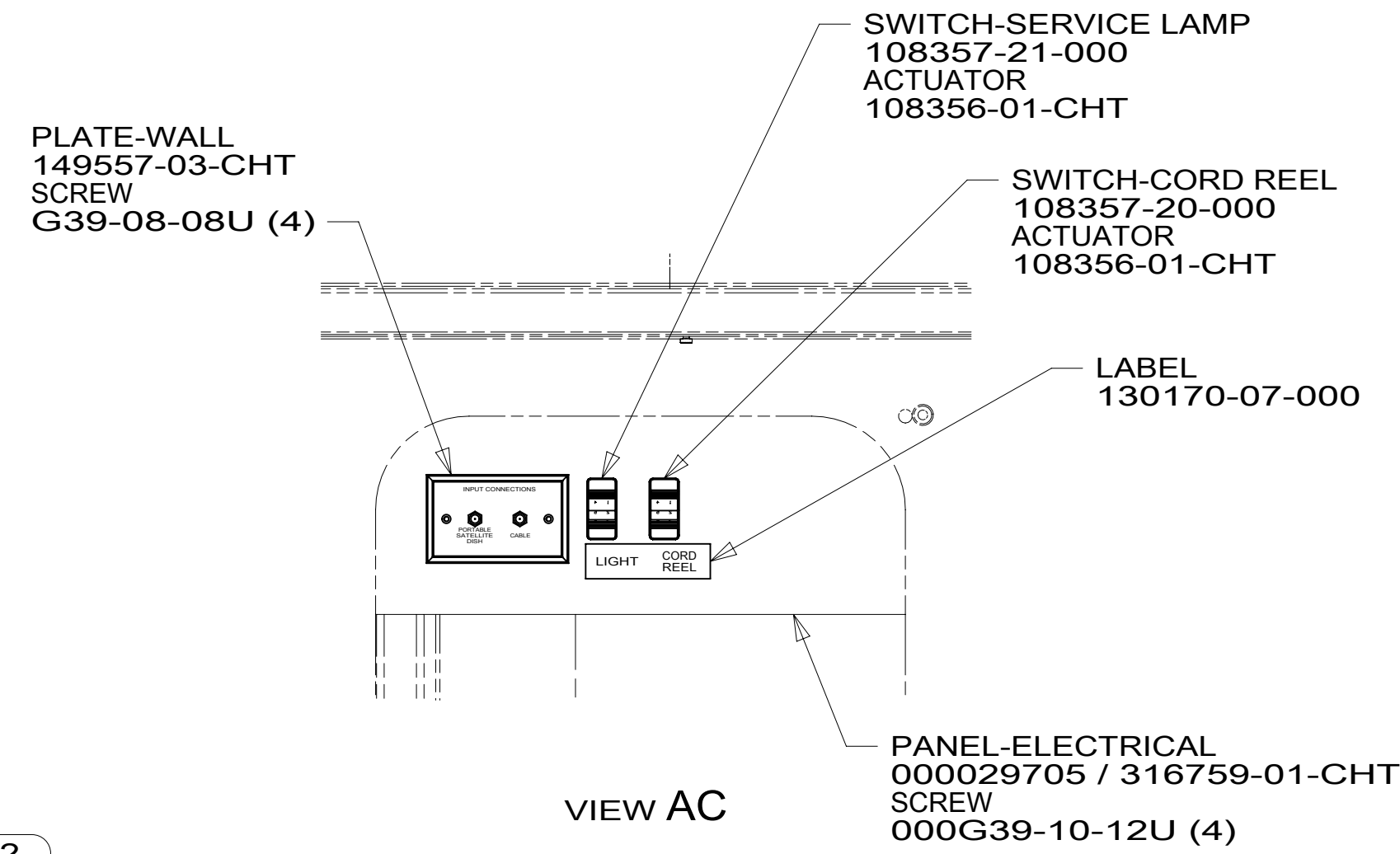


8 7 6 5 4 3 2 1



- NOTES:
1. AT MINIMUM ALL WIRES TO BE SUPPORTED AND SECURED PER CODE REQUIREMENTS. USE CLAMP 10495 OR 10497 OR WIRE TIE 8343 OR 108046 AND SCREW G67-XX-XXX OR G56-XX-XXX AS APPROPRIATE FOR INSTALLATION.
 2. ROUTE TANK SENSOR WIRES SO THEY DO NOT PASS OVER SENSORS. USE WIRE TIE MOUNT 155366-01-000 AND WIRE TIE 8343-01-000 AS NEEDED. TANK SURFACE MUST BE CLEANED USING ISOPROPYL ALCOHOL AND PRIMED WITH PRIMER 94.

- 282 SOLAR PANEL - 100 WATT
- 265 CODES/STANDARDS-CSA/CMVSS
- 1B1 CODES/STANDARDS USA

1B1 265

COPYRIGHT 2016 WINNEBAGO INDUSTRIES, INC.

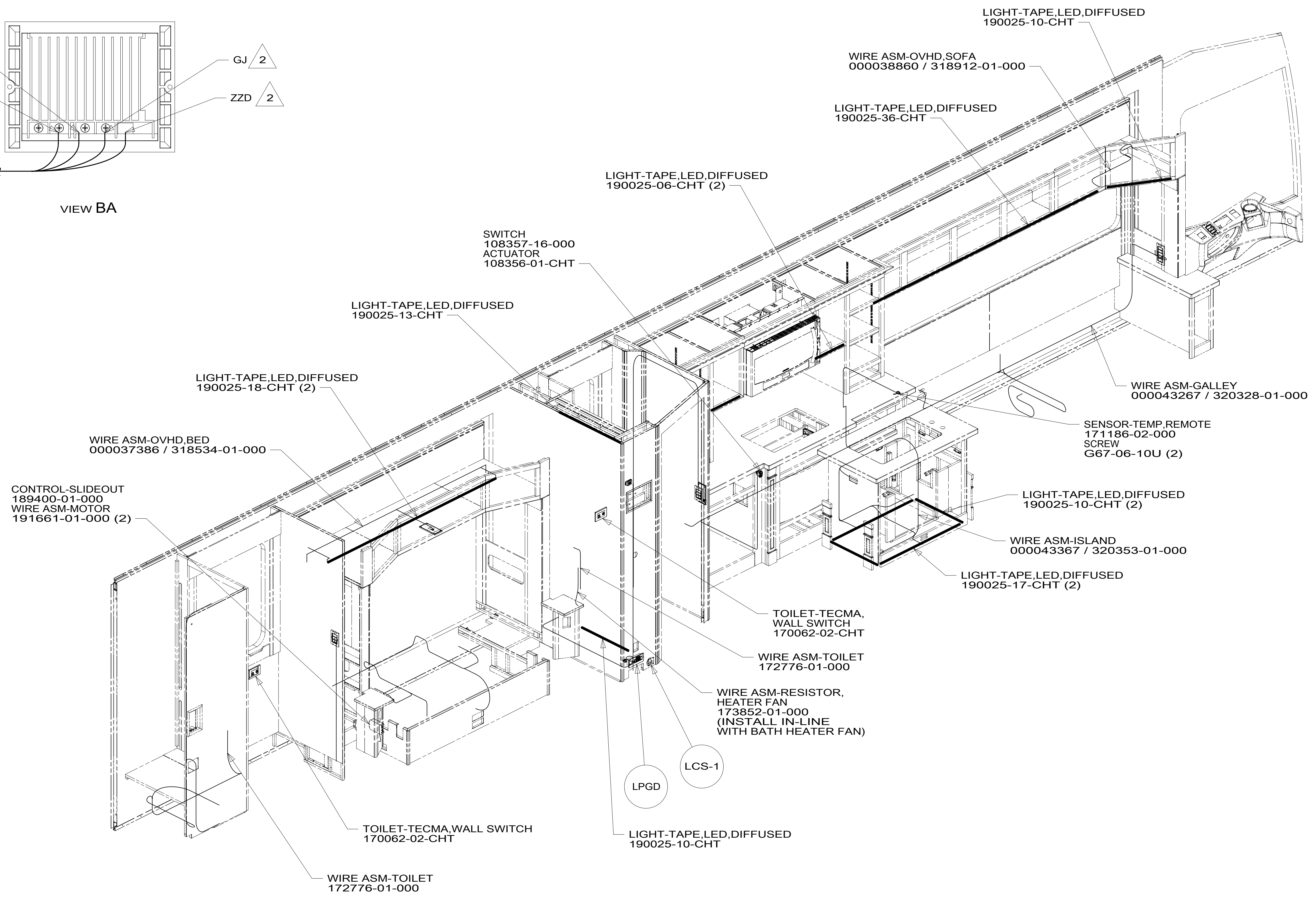
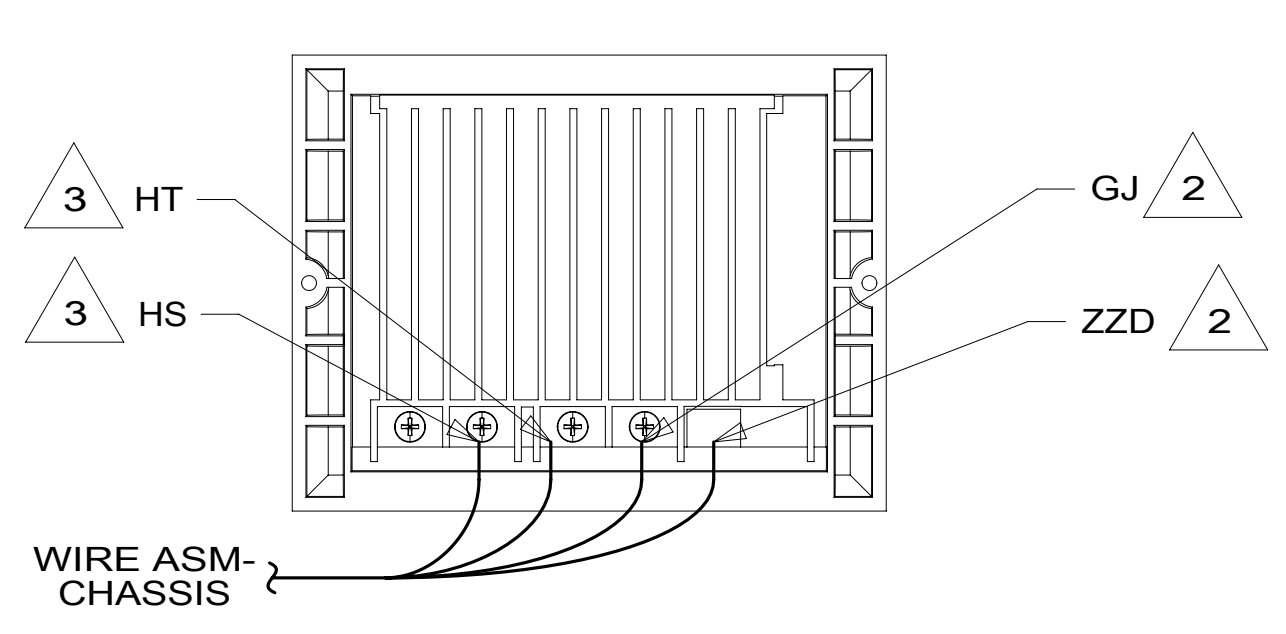
DSNR:	ALL DIMENSIONS ARE IN MILLIMETERS	
DIFFR:		
UNSPECIFIED TOLERANCES:	MATERIAL:	
WHOLE DIM (X) : 3		
ONE-PLACE (X.X) : 1.5		
TWO-PLACE (X.XX) : 0.50		
ANGLE : 1°		
REFER TO ES0018 FOR FASTENER TIGHTENING GUIDELINES	WEIGHT: (LBS)	FIRST USED: 18 R45DL
DESCRIPTION: WIRING INSTL-BODY, 12V		
SHEET: 1 OF 10	ITEM/PART NO: 000040192 / 31944401000	REV:

FOR ELECTRICAL TORQUE SPECIFICATIONS SEE DWG NO. 128783-01-000

FOR ELECTRICAL CALLOUTS SEE DWG NO. 121339-01-000

8 7 6 5 4 3 2 1

8 7 6 5 4 3 2 1



- 3 MARKED WITH RED TAPE.
- 2 MARKED WITH WHITE TAPE.

1. AT MINIMUM ALL WIRES TO BE SUPPORTED AND SECURED PER CODE REQUIREMENTS. USE CLAMP 10495 OR 10497 OR WIRE TIE 8343 OR 108046 AND SCREW G67-XX-XXX OR G56-XX-XXX AS APPROPRIATE FOR INSTALLATION.

NOTES:

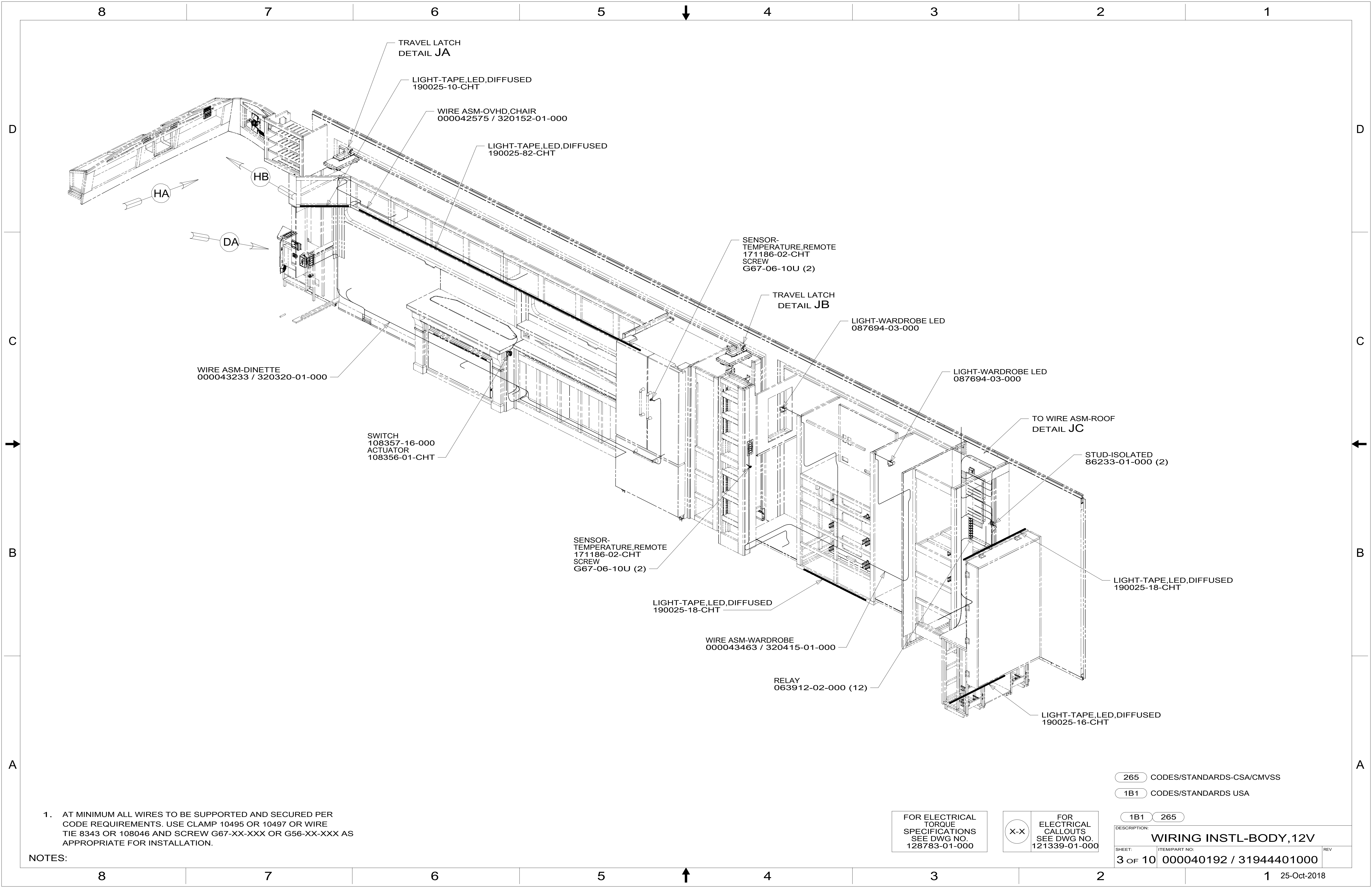
265 CODES/STANDARDS-CSA/CMVSS
1B1 CODES/STANDARDS USA

FOR ELECTRICAL TORQUE SPECIFICATIONS SEE DWG NO. 128783-01-000

FOR ELECTRICAL CALLOUTS SEE DWG NO. 121339-01-000

DESCRIPTION:	1B1 265	
WIRING INSTL-BODY, 12V		
SHEET:	ITEM/PART NO:	REV
2 OF 10	000040192 / 31944401000	

8 7 6 5 4 3 2 1 25-Oct-2018



1. AT MINIMUM ALL WIRES TO BE SUPPORTED AND SECURED PER CODE REQUIREMENTS. USE CLAMP 10495 OR 10497 OR WIRE TIE 8343 OR 108046 AND SCREW G67-XX-XXX OR G56-XX-XXX AS APPROPRIATE FOR INSTALLATION.

NOTES:

FOR ELECTRICAL TORQUE SPECIFICATIONS SEE DWG NO. 128783-01-000

FOR ELECTRICAL CALLOUTS SEE DWG NO. 121339-01-000

265 CODES/STANDARDS-CSA/CMVSS

1B1 CODES/STANDARDS USA

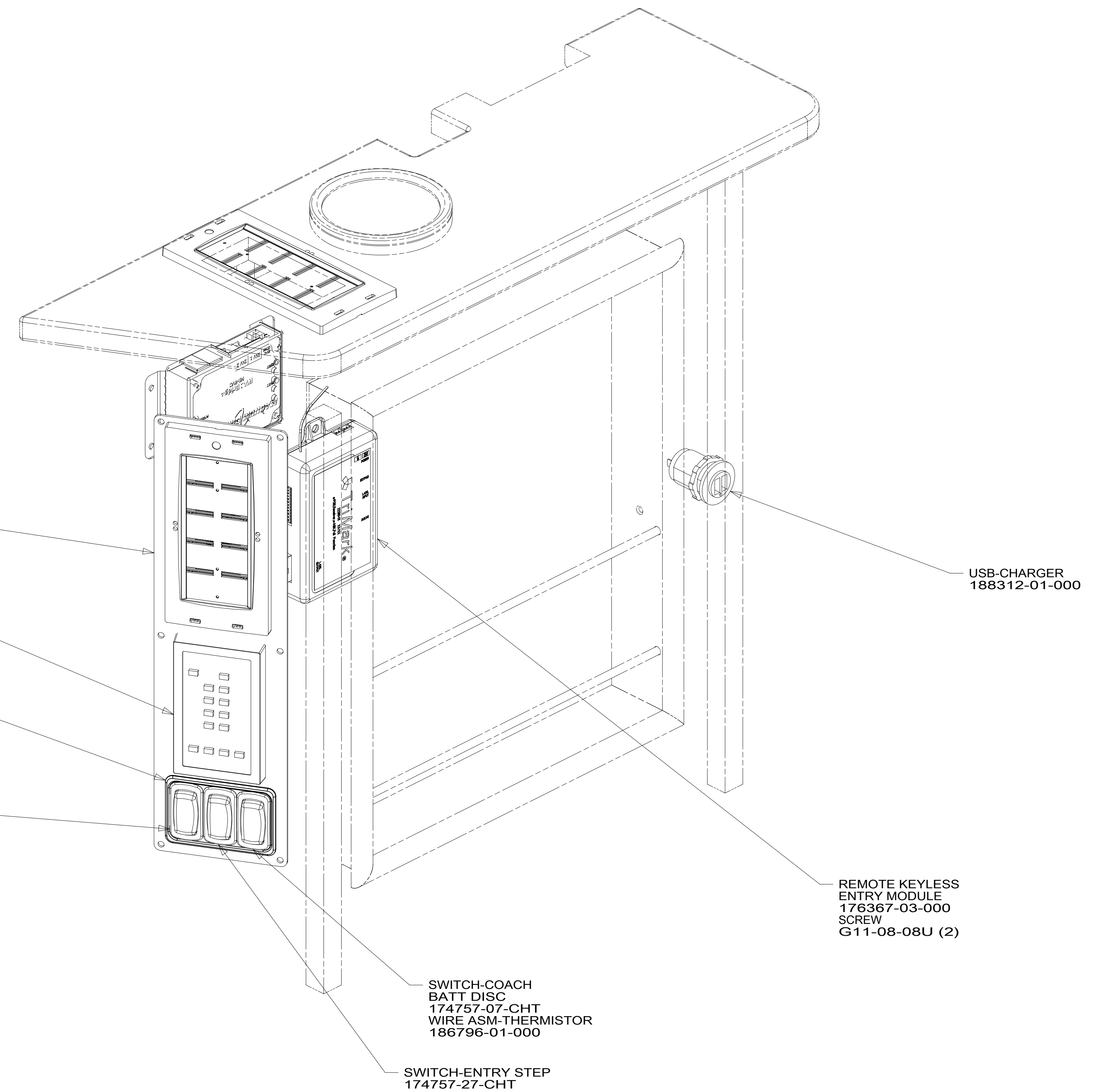
1B1 265

DESCRIPTION: **WIRING INSTL-BODY, 12V**

SHEET: 3 OF 10 ITEM/PART NO: 000040192 / 31944401000 REV

8 7 6 5 4 3 2 1

D
C
B
A



1. AT MINIMUM ALL WIRES TO BE SUPPORTED AND SECURED PER CODE REQUIREMENTS. USE CLAMP 10495 OR 10497 OR WIRE TIE 8343 OR 108046 AND SCREW G67-XX-XXX OR G56-XX-XXX AS APPROPRIATE FOR INSTALLATION.

NOTES:

DETAIL DA

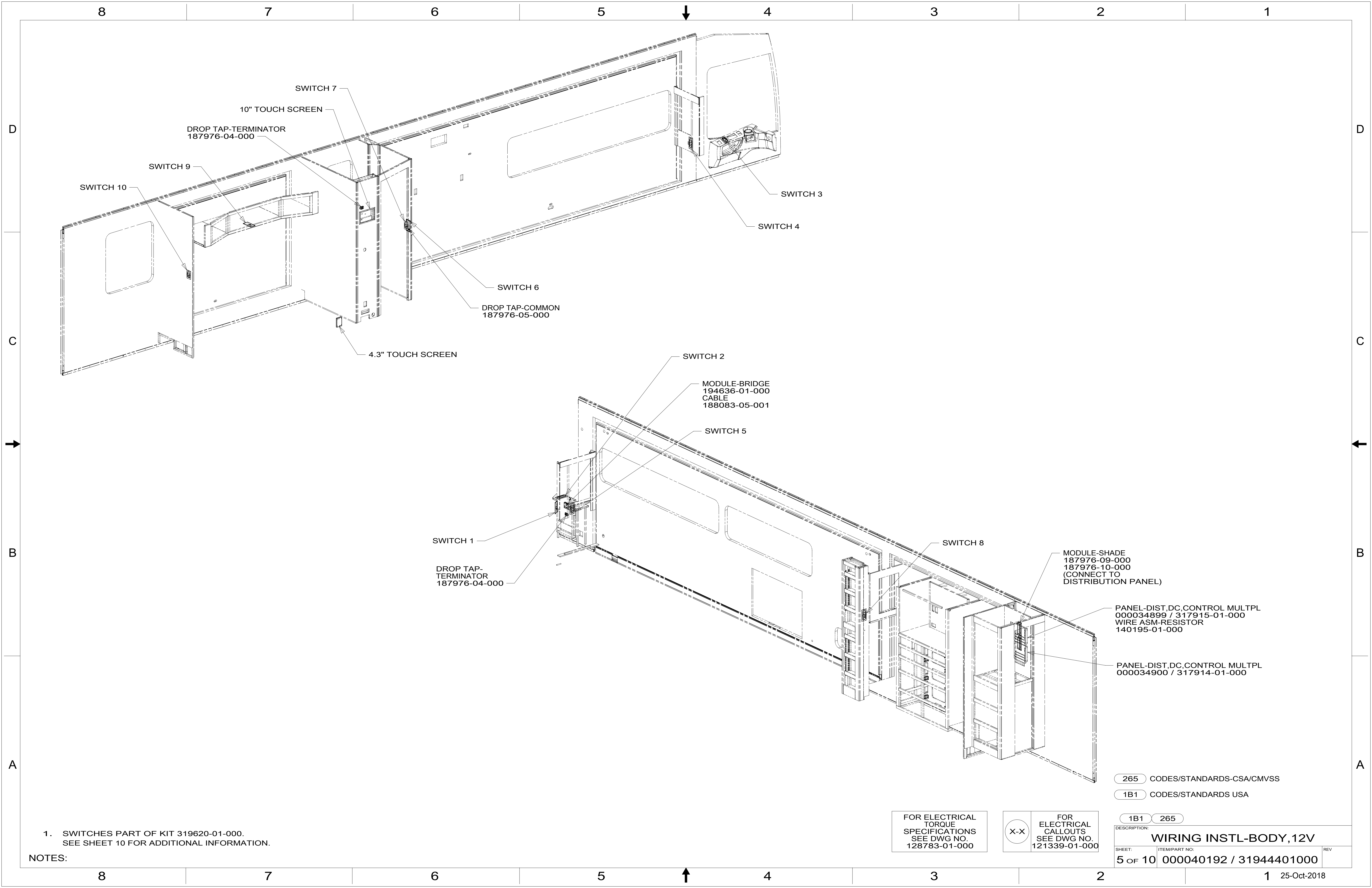
FOR ELECTRICAL
TORQUE
SPECIFICATIONS
SEE DWG NO.
128783-01-000

FOR ELECTRICAL
CALLOUTS
SEE DWG NO.
121339-01-000

265 CODES/STANDARDS-CSA/CMVSS
1B1 CODES/STANDARDS USA

DESCRIPTION:	1B1 265	
WIRING INSTL-BODY, 12V		
SHEET:	ITEM/PART NO:	REV
4 OF 10	000040192 / 31944401000	

8 7 6 5 4 3 2 1 25-Oct-2018



1. SWITCHES PART OF KIT 319620-01-000.
SEE SHEET 10 FOR ADDITIONAL INFORMATION.

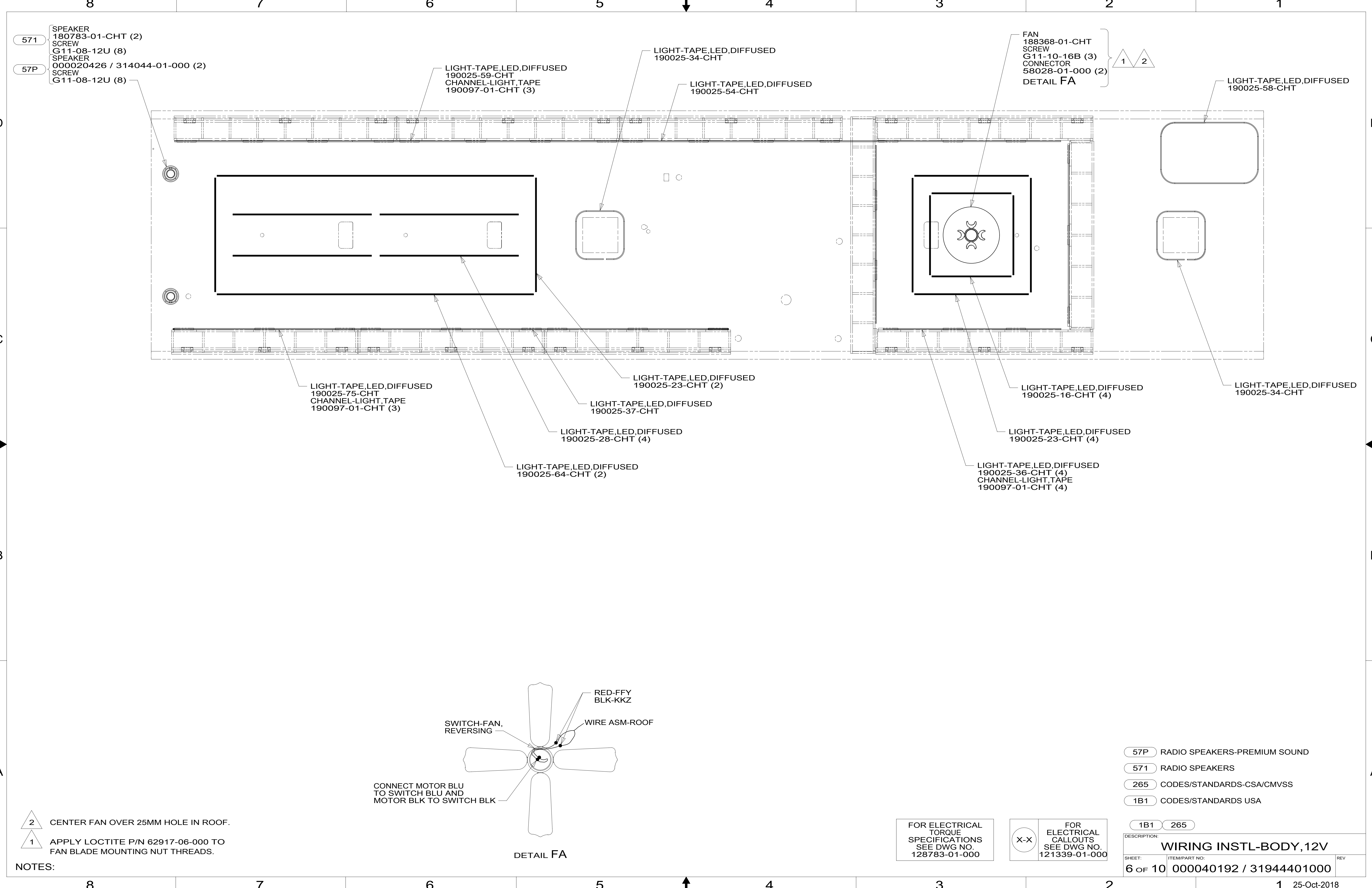
NOTES:

FOR ELECTRICAL TORQUE SPECIFICATIONS SEE DWG NO. 128783-01-000

FOR ELECTRICAL CALLOUTS SEE DWG NO. 121339-01-000

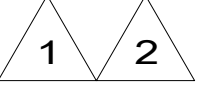
265 CODES/STANDARDS-CSA/CMVSS
1B1 CODES/STANDARDS USA

DESCRIPTION:	1B1 265	
WIRING INSTL-BODY, 12V		
SHEET:	ITEM/PART NO.:	REV
5 OF 10	000040192 / 31944401000	

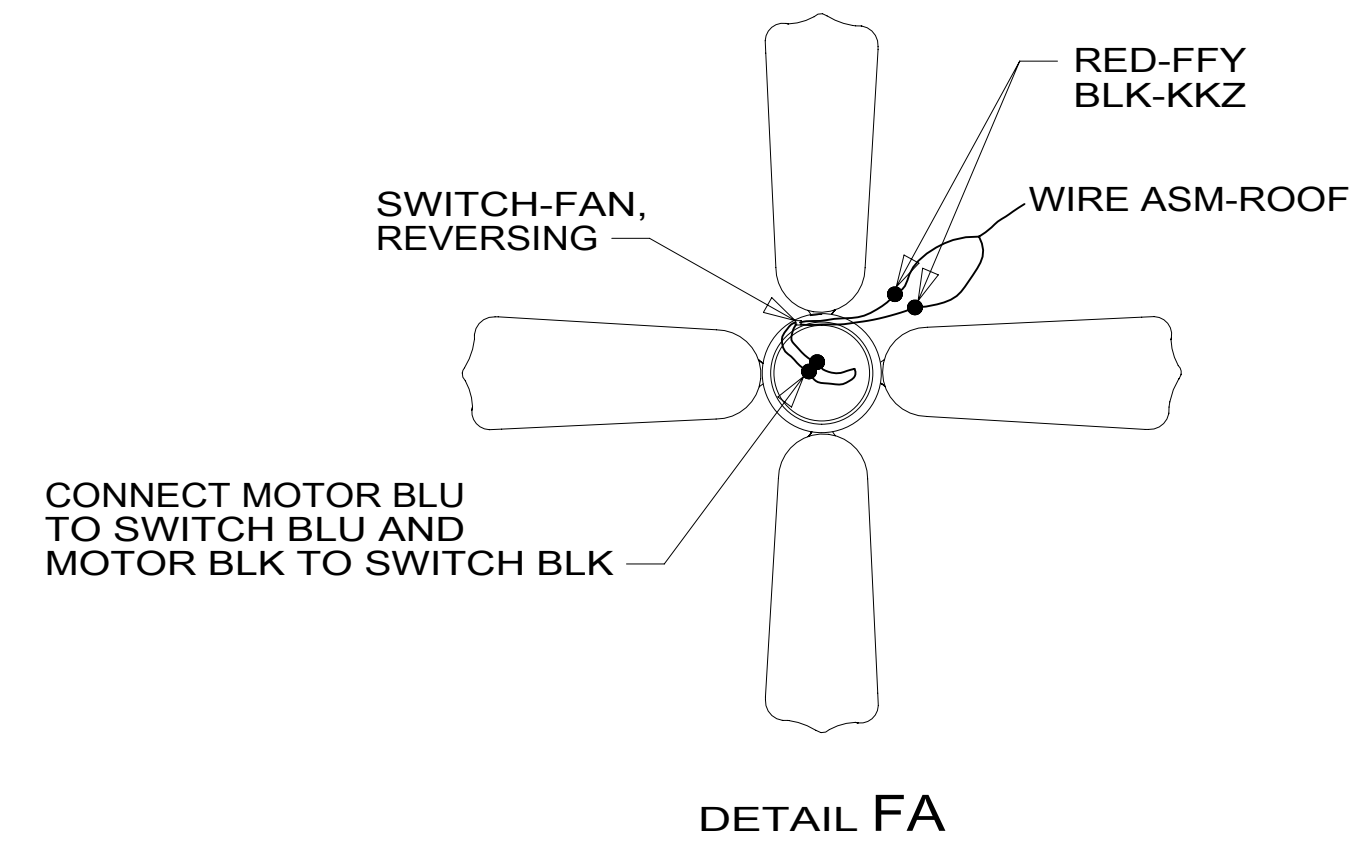


- 571 SPEAKER 180783-01-CHT (2)
- SCREW G11-08-12U (8)
- 57P SPEAKER 000020426 / 314044-01-000 (2)
- SCREW G11-08-12U (8)

- FAN 188368-01-CHT
- SCREW G11-10-16B (3)
- CONNECTOR 58028-01-000 (2)
- DETAIL FA



- 2 CENTER FAN OVER 25MM HOLE IN ROOF.
- 1 APPLY LOCTITE P/N 62917-06-000 TO FAN BLADE MOUNTING NUT THREADS.

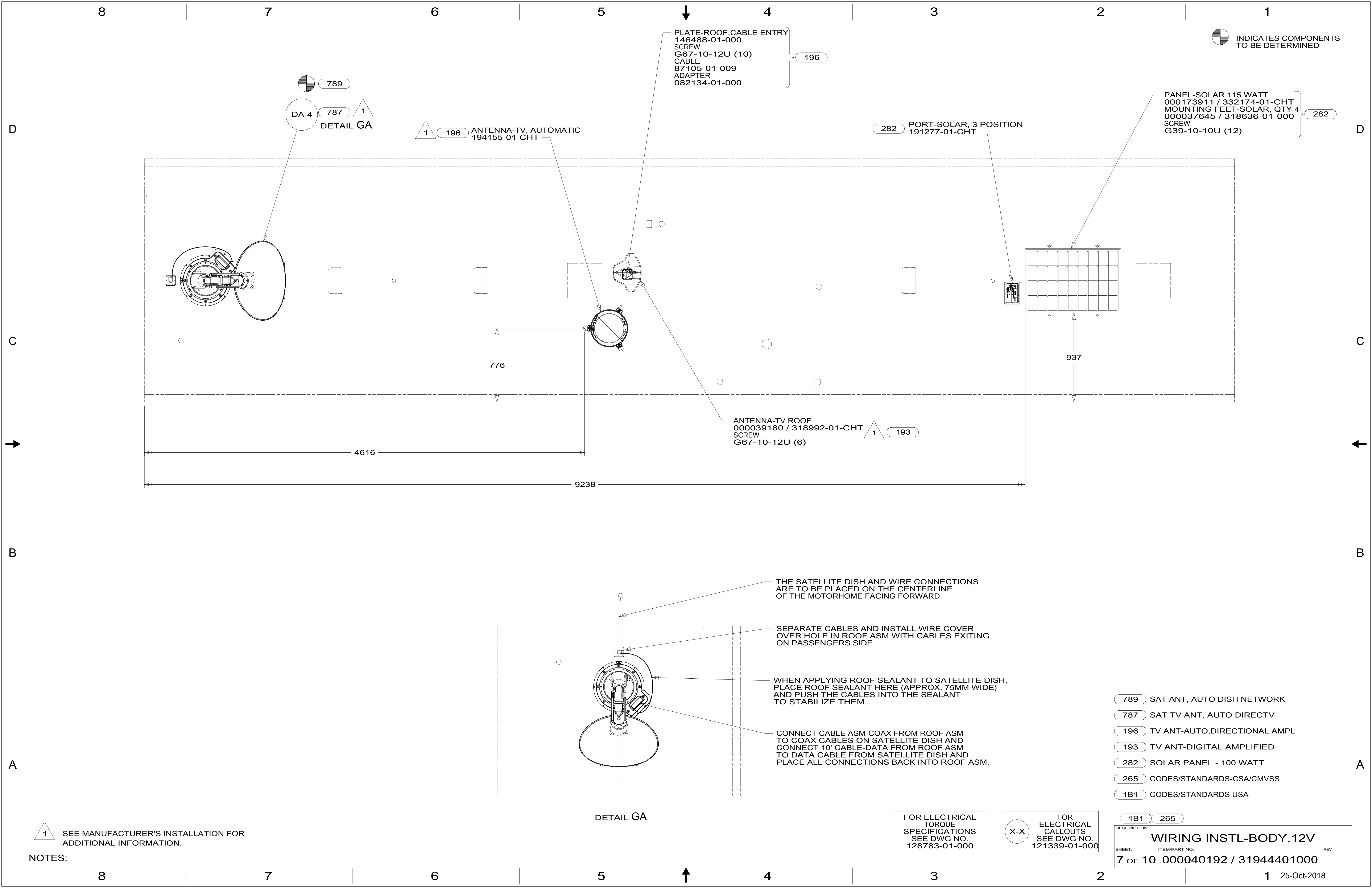


FOR ELECTRICAL TORQUE SPECIFICATIONS SEE DWG NO. 128783-01-000

FOR ELECTRICAL CALLOUTS SEE DWG NO. 121339-01-000

- 57P RADIO SPEAKERS-PREMIUM SOUND
- 571 RADIO SPEAKERS
- 265 CODES/STANDARDS-CSA/CMVSS
- 1B1 CODES/STANDARDS USA

DESCRIPTION:		WIRING INSTL-BODY, 12V	
SHEET:	ITEM/PART NO.:	REV:	
6 OF 10	000040192 / 31944401000		



INDICATES COMPONENTS TO BE DETERMINED

PLATE-ROOF, CABLE ENTRY
 146488-01-000
 SCREW
 G67-10-12U (10)
 CABLE
 87105-01-009
 ADAPTER
 082134-01-000

789
 DA-4 787 1
 DETAIL GA

1 196 ANTENNA-TV, AUTOMATIC
 194155-01-CHT

282 PORT-SOLAR, 3 POSITION
 191277-01-CHT

PANEL-SOLAR 115 WATT
 000173911 / 332174-01-CHT
 MOUNTING FEET-SOLAR, QTY 4
 000037645 / 318636-01-000
 SCREW
 G39-10-10U (12)

ANTENNA-TV ROOF
 000039180 / 318992-01-CHT
 SCREW
 G67-10-12U (6)

THE SATELLITE DISH AND WIRE CONNECTIONS ARE TO BE PLACED ON THE CENTERLINE OF THE MOTORHOME FACING FORWARD.

SEPARATE CABLES AND INSTALL WIRE COVER OVER HOLE IN ROOF ASM WITH CABLES EXITING ON PASSENGERS SIDE.

WHEN APPLYING ROOF SEALANT TO SATELLITE DISH, PLACE ROOF SEALANT HERE (APPROX. 75MM WIDE) AND PUSH THE CABLES INTO THE SEALANT TO STABILIZE THEM.

CONNECT CABLE ASM-COAX FROM ROOF ASM TO COAX CABLES ON SATELLITE DISH AND CONNECT 10' CABLE-DATA FROM ROOF ASM TO DATA CABLE FROM SATELLITE DISH AND PLACE ALL CONNECTIONS BACK INTO ROOF ASM.

DETAIL GA

- 789 SAT ANT, AUTO DISH NETWORK
- 787 SAT TV ANT, AUTO DIRECTV
- 196 TV ANT-AUTO,DIRECTIONAL AMPL
- 193 TV ANT-DIGITAL AMPLIFIED
- 282 SOLAR PANEL - 100 WATT
- 265 CODES/STANDARDS-CSA/CMVSS
- 1B1 CODES/STANDARDS USA

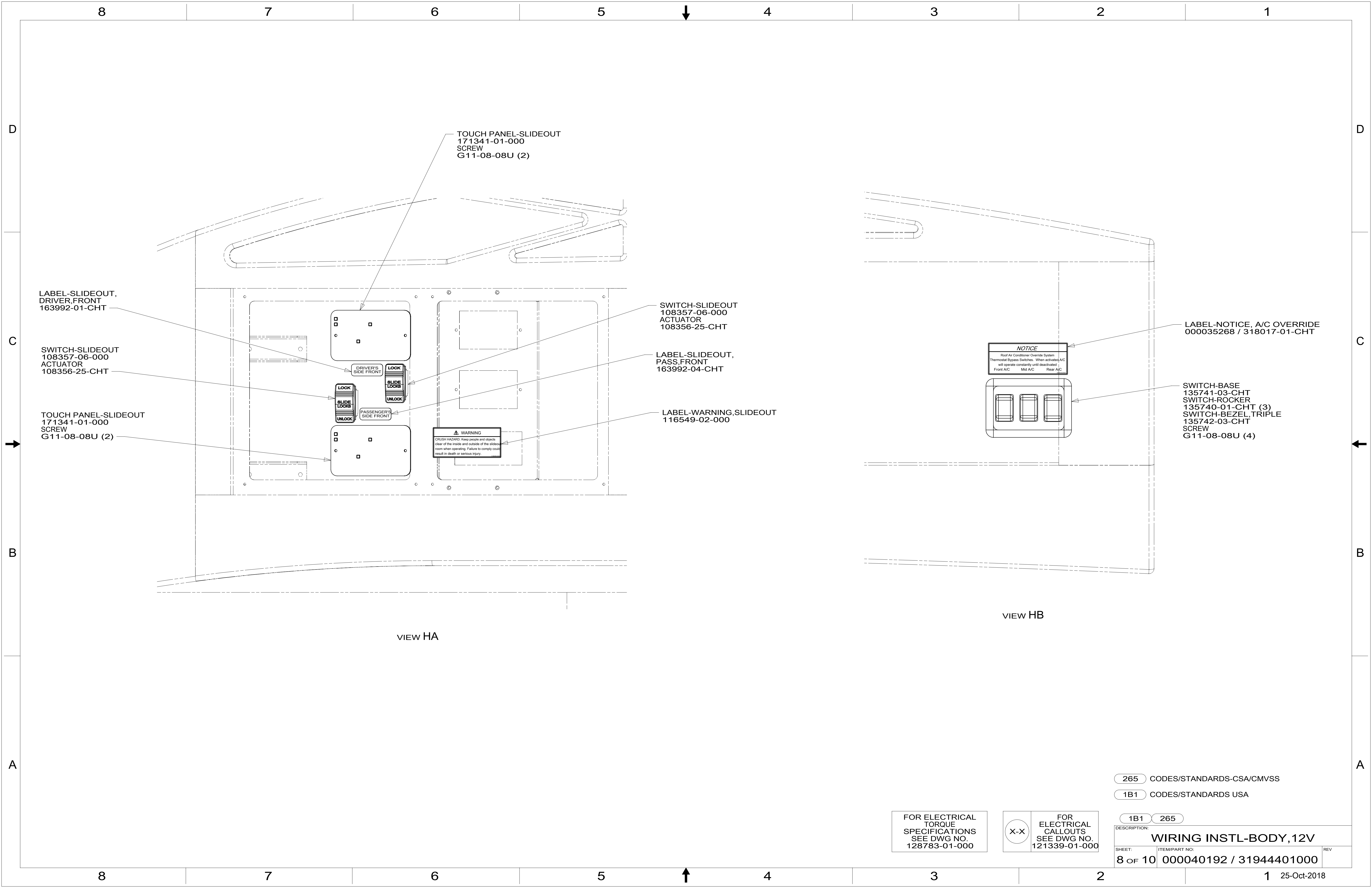
1 SEE MANUFACTURER'S INSTALLATION FOR ADDITIONAL INFORMATION.

FOR ELECTRICAL TORQUE SPECIFICATIONS SEE DWG NO. 128783-01-000

FOR ELECTRICAL CALLOUTS SEE DWG NO. 121339-01-000

DESCRIPTION:	1B1 265	
WIRING INSTL-BODY, 12V		
SHEET:	ITEM/PART NO:	REV
7 of 10	000040192 / 31944401000	

NOTES:



LABEL-SLIDEOUT, DRIVER,FRONT
163992-01-CHT

SWITCH-SLIDEOUT
108357-06-000
ACTUATOR
108356-25-CHT

TOUCH PANEL-SLIDEOUT
171341-01-000
SCREW
G11-08-08U (2)

TOUCH PANEL-SLIDEOUT
171341-01-000
SCREW
G11-08-08U (2)

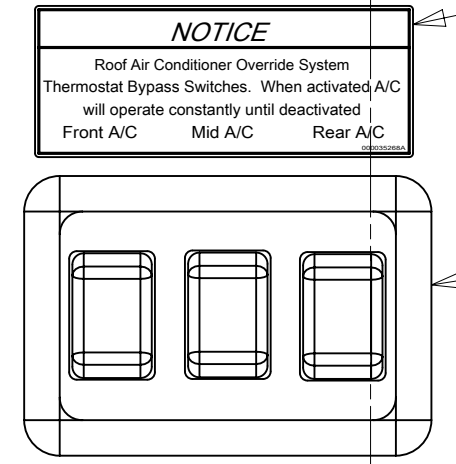
SWITCH-SLIDEOUT
108357-06-000
ACTUATOR
108356-25-CHT

LABEL-SLIDEOUT,
PASS,FRONT
163992-04-CHT

LABEL-WARNING,SLIDEOUT
116549-02-000

LABEL-NOTICE, A/C OVERRIDE
000035268 / 318017-01-CHT

SWITCH-BASE
135741-03-CHT
SWITCH-ROCKER
135740-01-CHT (3)
SWITCH-BEZEL,TRIPLE
135742-03-CHT
SCREW
G11-08-08U (4)



WARNING
CRUSH HAZARD. Keep people and objects clear of the inside and outside of the slide-out room when operating. Failure to comply could result in death or serious injury.

VIEW HA

VIEW HB

265 CODES/STANDARDS-CSA/CMVSS

1B1 CODES/STANDARDS USA

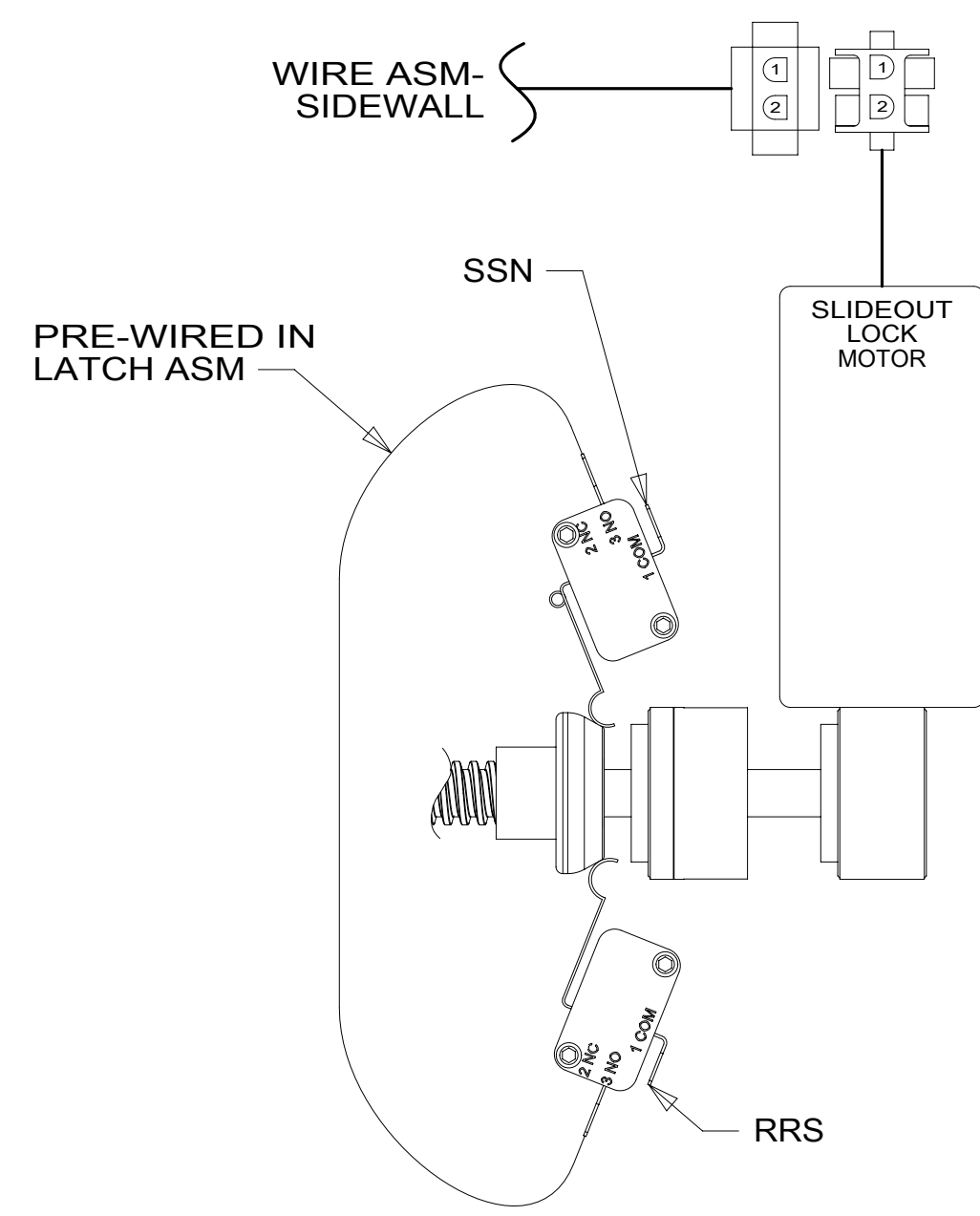
1B1 265

FOR ELECTRICAL TORQUE SPECIFICATIONS SEE DWG NO. 128783-01-000

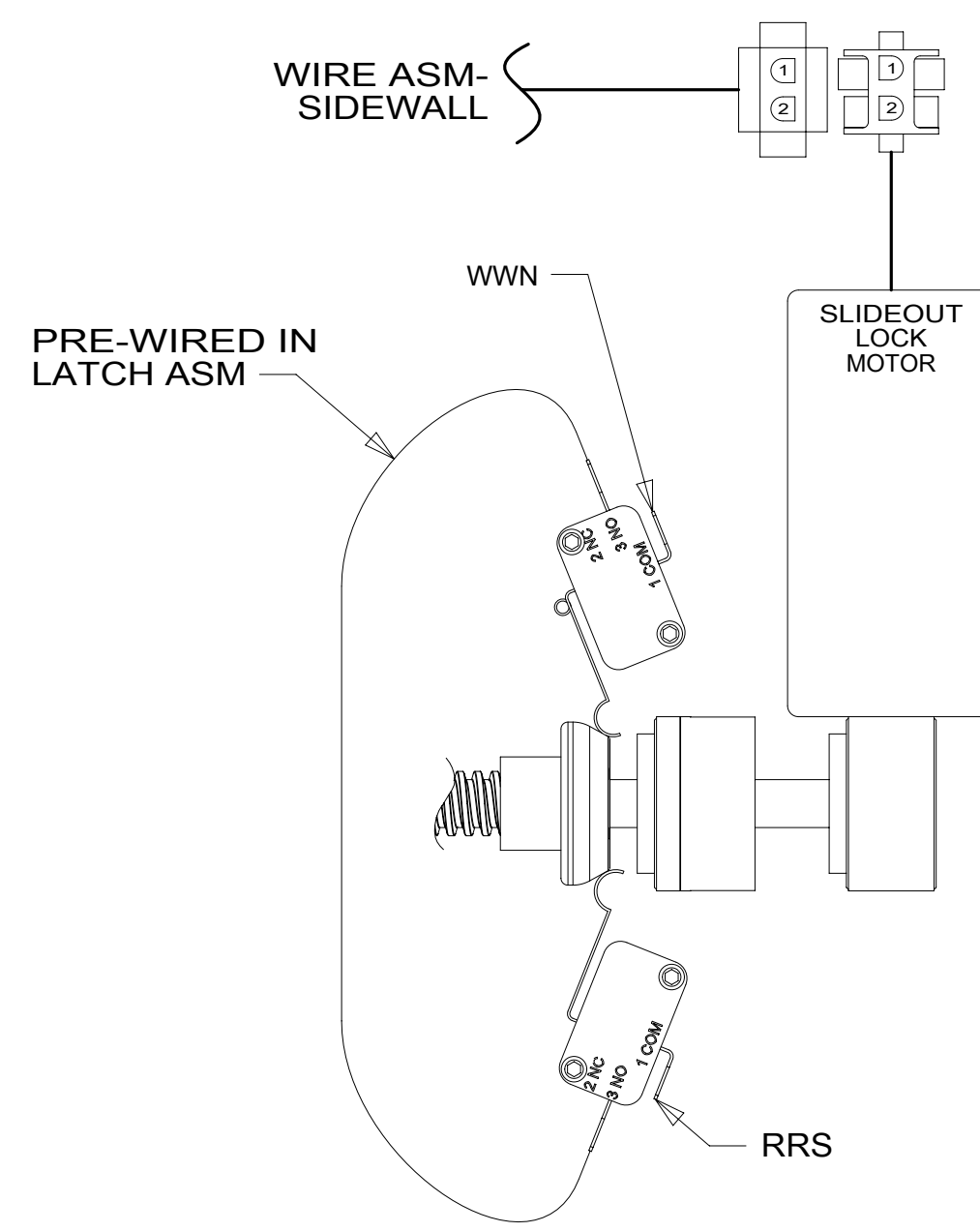
FOR ELECTRICAL CALLOUTS SEE DWG NO. 121339-01-000

DESCRIPTION:
WIRING INSTL-BODY, 12V

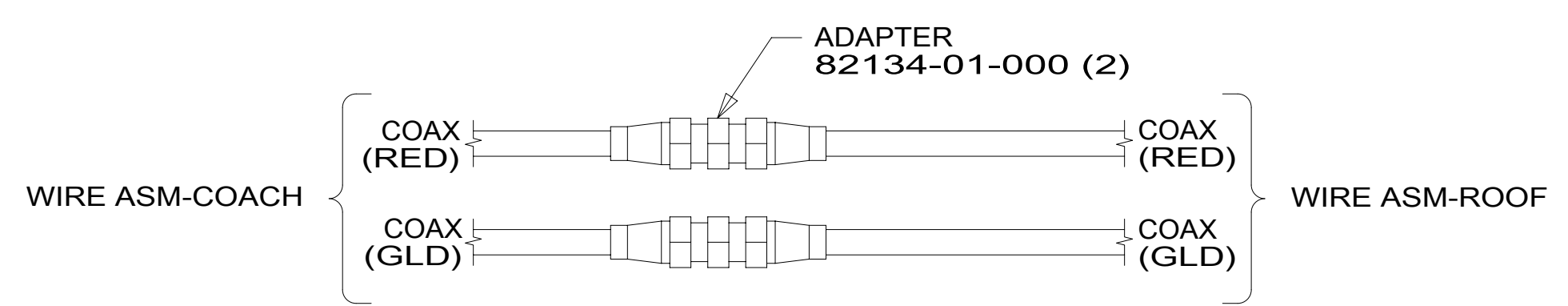
SHEET: 8 OF 10 ITEM/PART NO.: 000040192 / 31944401000 REV



DETAIL JA



DETAIL JB



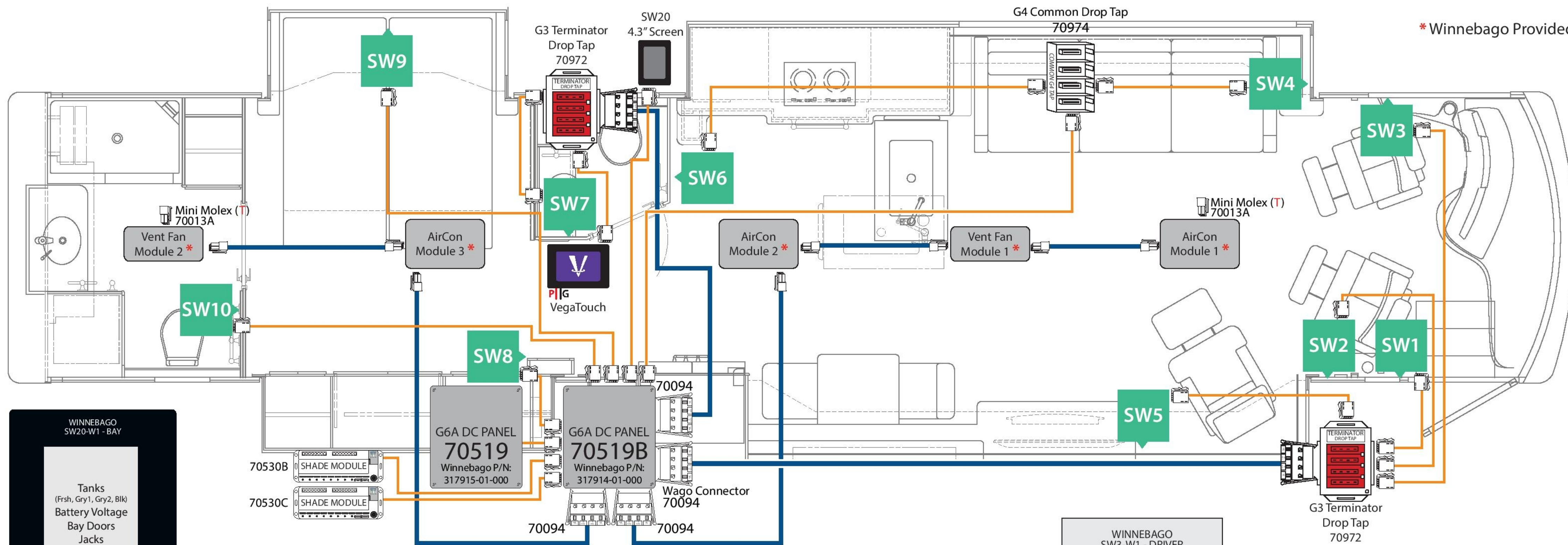
DETAIL JC

265 CODES/STANDARDS-CSA/CMVSS
 1B1 CODES/STANDARDS USA

FOR ELECTRICAL TORQUE SPECIFICATIONS SEE DWG NO. 128783-01-000

FOR ELECTRICAL CALLOUTS SEE DWG NO. 121339-01-000

DESCRIPTION:		1B1 265	
WIRING INSTL-BODY, 12V			
SHEET:	ITEM/PART NO.:	REV	
9 OF 10	000040192 / 31944401000		



* Winnebago Provided

WINNEBAGO SW20-W1 - BAY

- Tanks (Frsk, Gry1, Gry2, Blk)
- Battery Voltage
- Bay Doors
- Jacks
- Gen Start/Stop
- Water Pump
- Lights

Firefly P/N: 92900
Winnebago P/N: 317859-01-000

WINNEBAGO SW9-W1 (P) - BEDROOM OVHD (FW: 6v10)

15	RIGHT OVHD	16
13,14	BEDRM ACCENT	20
17-19	BEDRM TRAY	S14-16
57	GEN	59
58	WATER PUMP	60
	PANEL LIGHTS	
	LIGHT MASTER	
	OFF	

Firefly P/N: 92700
Winnebago P/N: 317861-01-000

WINNEBAGO SW10-W2 (P) - REAR BATH (FW: 6v10)

22,23	BATH	29
30	SHOWER	24
VF2	WATER PUMP	36

Firefly P/N: 92850
Winnebago P/N: 319622-01-000

WINNEBAGO SW8-W2 (P) - BEDROOM (FW: 6v10)

13,14	BEDRM	17-19
20	ACCENT	26
35	WARD ROBE	S14-16
57	LOCK	51,53
58	ALL DOORS	52,54
	PANEL LIGHTS	
	FRT LST MASTER	
	OFF	

Firefly P/N: 92600
Winnebago P/N: 319621-01-000

WINNEBAGO SW6-W1 - GALLEY

1-4	CEILING	5-7
12	GALLEY OVHD	32
9-11	ACCENT	26
S4-8	D/S SHADES	S9-12
VF1	WATER PUMP	S1-12
	ALL FRT SHADES	

Firefly P/N: 92400
Winnebago P/N: 317862-01-000

WINNEBAGO SW5-W1 - TV

1-4	CEILING	5-7
9-11	ACCENT	8
26	CHAIR OVHD	43
S4-8	D/S SHADES	44
	P/S SHADES	S9-12
	PANEL LIGHTS	
	ALL FRT SHADES	S1-12

Firefly P/N: 92250
Winnebago P/N: 317863-01-000

WINNEBAGO SW4-W1 - LOUNGE

1-4	CEILING	5-7
9-11	ACCENT	33
26	SOFA OVHD	43
S4-8	D/S SHADES	44
	P/S SHADES	S9-12
	PANEL LIGHTS	
	ALL FRT SHADES	S1-12

Firefly P/N: 92150
Winnebago P/N: 317864-01-000

WINNEBAGO SW3-W1 - DRIVER

S4-8	D/S SHADES	51
51	LOCK	52
52	ENTRY DOOR	
47	EXT. STEP COVER	27
48	EXT. STEP COVER	

Firefly P/N: 92100
Winnebago P/N: 317867-01-000

WINNEBAGO SW7-W1 (P) - MID BATH (FW: 6v10)

21	BATH	28
36	WATER PUMP	26
	PANEL LIGHTS	
	WATER PUMP	56

Firefly P/N: 92450
Winnebago P/N: 317866-01-000

WINNEBAGO SW2-W1 - PASSENGER

47	EXT. STEP COVER	27
48	EXT. SECURITY	
S2	W/S NIGHT	S9-12
51	LOCK	51
52	ENTRY DOOR	53
	PANEL LIGHTS	54
	LIGHT MASTER	
	OFF	

Firefly P/N: 92050
Winnebago P/N: 317865-01-000

WINNEBAGO SW1-W1 - ENTRY

38	PORCH	1-4
45	DOOR AWNING	25
46	DOOR AWNING	51
39	FRONT AWNING	52
40	REAR AWNING	53
49	JACKS	54
50	REAR AWNING	
	ALL DOORS	
	LIGHT MASTER	
	OFF	

Firefly P/N: 92000
Winnebago P/N: 317868-01-000

WINNEBAGO Orion 10" TouchScreen

Thermostat	Eng Preheat
Auto Generator Start	Burner
Energy Management	Burner Status
Rear Slideouts (D/S RR, P/S RR)	Engine Block Heater
Water Pump	Inverter Controls
Aqua Hot Elec	Tank Levels (Fresh, Gry 1, Gry 2, Blk)

Firefly P/N: 55503A
Winnebago P/N: 317858-01-000

KIT:
Firefly P/N: 90853AC
Winnebago P/N: 319620-01-000

WINNEBAGO - R45DL

Network Wiring Diagram and Switch Panel Layout

SSP-18 (FW: 6v8 & 6v10 Prox.) | REV. 1v3 | 01/19/17

DI: AD
PI: AD

Network Legend

- Trunk Cable
- Drop Cable
- Switch Position

Drop Cable Connections

265 CODES/STANDARDS-CSA/CMVSS
1B1 CODES/STANDARDS USA

THIS SHEET FOR REFERENCE ONLY

FOR ELECTRICAL TORQUE SPECIFICATIONS SEE DWG NO. 128783-01-000

FOR ELECTRICAL CALLOUTS SEE DWG NO. 121339-01-000

DESCRIPTION: **WIRING INSTL-BODY, 12V**

SHEET: 10 OF 10 | ITEM/PART NO.: 000040192 / 31944401000 | REV.