

PANEL-CLOSEOUT  
161260-07-CHT  
SCREW  
G39-08-12U (6)

GROMMET  
23942-02-000 (4)

TO GENERATOR 4

TO SLIDEROOM

BRACKET  
155223-04-CHT  
SCREW  
G39-10-12U (3)  
110V CONNECTION  
(GRY)(PUR)(YEL)(BLU)  
SCREW  
G39-06-24U (16)  
CLAMP  
10495-01-000 (8)  
SCREW  
G39-10-12U (8)

RCP-2 (BLU)  
EXTERIOR

RCP-3 (YEL)  
VACUUM

RCP-1 (BLU)  
FREEZER

110V CONNECTORS  
(PUR)(BRN)  
BRACKET-110V CONNECTOR,MOUNT  
155223-05-CHT  
SCREW  
G39-06-24U (8)  
CLAMP  
10495-01-000 (4)  
SCREW  
G39-10-12U (4)

1100 DROP  
TO LOAD CENTER

3000 LOOP  
TO GALLEY GFI  
(BLU)

TO GROUND BAR

TO AQUA HOT  
(WHT)

DB

EA

DA

ATS ASM  
000035125 / 317975-01-000  
NUT  
D39-04-00U (4)

1600 LOOP  
TO BATH GFI  
(BRN)

RCP-B (PUR)  
BASEMENT

1400 LOOP  
(BRN)  
1600 DROP  
(ORG)(GLD)(GLD-2)

- 4 SEE GENERATOR INSTL FOR ADDITIONAL INFORMATION.
3. WIRES THAT REST ON WIRE TRAYS ARE TO BE TIED DOWN WITH WIRE TIE 8343-04-000.
2. CLAMP TO FLOOR SUPPORT TUBES AS NECESSARY WITH CLAMP 10497-01-000.
1. AT MINIMUM ALL WIRES TO BE SUPPORTED AND SECURED PER CODE REQUIREMENTS. USE CLAMP 10495 OR 10497 OR WIRE TIE 8343 OR 108046 AND SCREW G67-XX-XXX OR G56-XX-XXX AS APPROPRIATE FOR INSTALLATION.

NOTES:

- 265 CODES/STANDARDS-CSA/CMVSS
- 1B1 CODES/STANDARDS USA
- 1B1 265

**WINNEBAGO**  
COPYRIGHT 2016 WINNEBAGO INDUSTRIES, INC.

DSNR:	ALL DIMENSIONS ARE IN MILLIMETERS	
DIFFR:		
UNSPECIFIED TOLERANCES:	MATERIAL:	
WHOLE DIM (X) : 3		
ONE-PLACE (X.X) : 1.5		
TWO-PLACE (X.XX) : 0.50		
ANGLE : 1°		
REFER TO ES0018 FOR FASTENER TIGHTENING GUIDELINES	WEIGHT: (LBS)	FIRST USED: <b>18 R45DL</b>
DESCRIPTION: <b>WIRING INSTL-BODY, 110V</b>		
SHEET: <b>1 OF 8</b>	ITEM/PART NO: <b>000040190 / 31944301000</b>	REV:

FOR ELECTRICAL TORQUE SPECIFICATIONS SEE DWG NO. 128783-01-000

FOR ELECTRICAL CALLOUTS SEE DWG NO. 121339-01-000

8 7 6 5 4 3 2 1

D

D

C

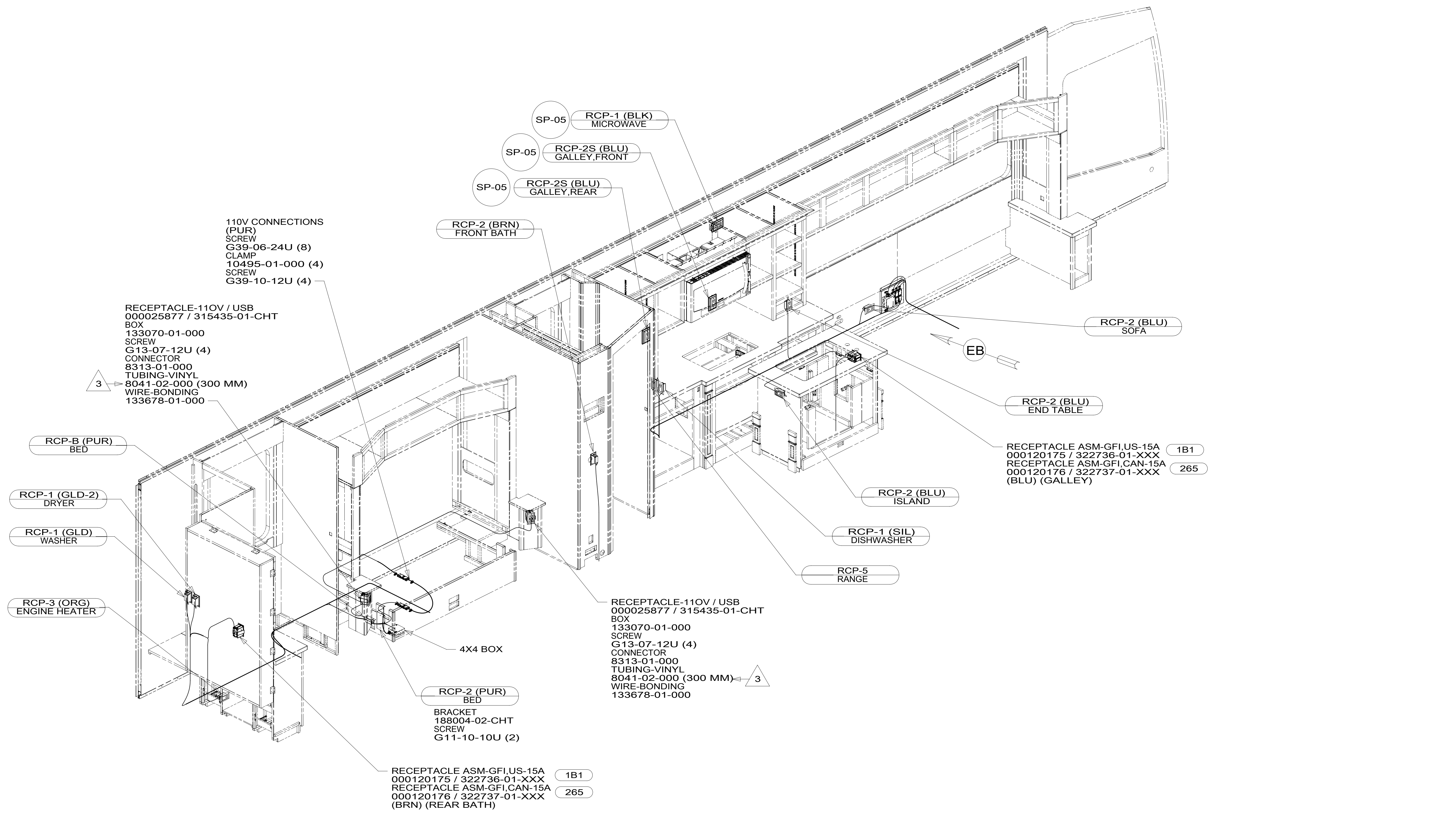
C

B

B

A

A



110V CONNECTIONS  
(PUR)  
SCREW  
G39-06-24U (8)  
CLAMP  
10495-01-000 (4)  
SCREW  
G39-10-12U (4)

RECEPTACLE-110V / USB  
000025877 / 315435-01-CHT  
BOX  
133070-01-000  
SCREW  
G13-07-12U (4)  
CONNECTOR  
8313-01-000  
TUBING-VINYL  
8041-02-000 (300 MM)  
WIRE-BONDING  
133678-01-000

RECEPTACLE ASM-GFI,US-15A  
000120175 / 322736-01-XXX (1B1)  
RECEPTACLE ASM-GFI,CAN-15A  
000120176 / 322737-01-XXX (265)  
(BLU) (GALLEY)

RECEPTACLE-110V / USB  
000025877 / 315435-01-CHT  
BOX  
133070-01-000  
SCREW  
G13-07-12U (4)  
CONNECTOR  
8313-01-000  
TUBING-VINYL  
8041-02-000 (300 MM) (3)  
WIRE-BONDING  
133678-01-000

RECEPTACLE ASM-GFI,US-15A (1B1)  
000120175 / 322736-01-XXX  
RECEPTACLE ASM-GFI,CAN-15A (265)  
000120176 / 322737-01-XXX  
(BRN) (REAR BATH)

(3) APPLY TO BARE GROUND WIRES.

- ALL 110V WIRES TO BE CLAMPED WITH CLAMP 10497-05-000 WITHIN 200MM OF OUTLET BOXES, USE SCREW G67-10-12B.
- AT MINIMUM ALL WIRES TO BE SUPPORTED AND SECURED PER CODE REQUIREMENTS. USE CLAMP 10495 OR 10497 OR WIRE TIE 8343 OR 108046 AND SCREW G67-XX-XXX OR G56-XX-XXX AS APPROPRIATE FOR INSTALLATION.

NOTES:

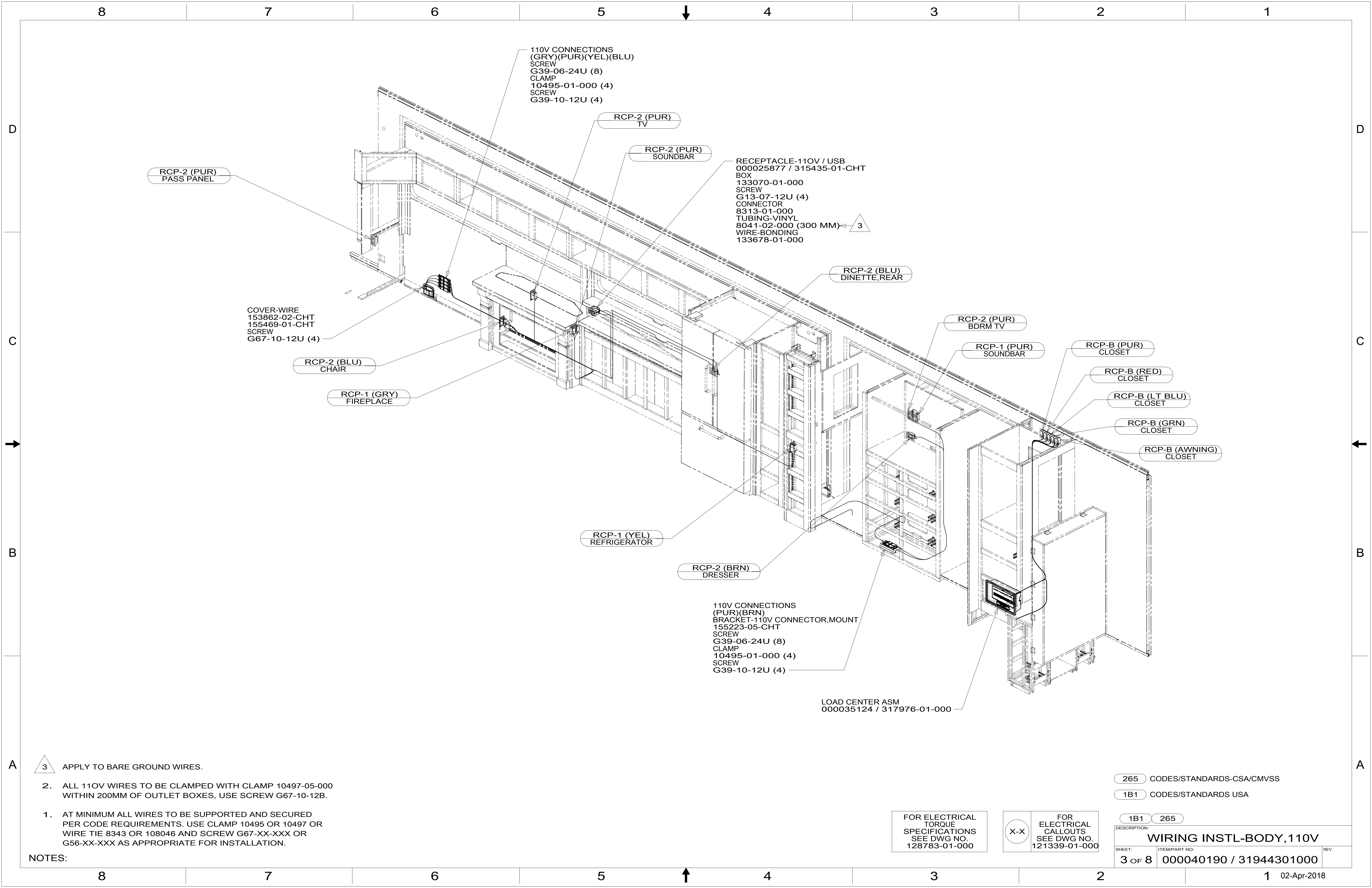
(265) CODES/STANDARDS-CSA/CMVSS  
(1B1) CODES/STANDARDS USA

FOR ELECTRICAL TORQUE SPECIFICATIONS SEE DWG NO. 128783-01-000

FOR ELECTRICAL CALLOUTS SEE DWG NO. 121339-01-000

(1B1)	(265)
DESCRIPTION: <b>WIRING INSTL-BODY, 110V</b>	
SHEET: 2 OF 8	ITEM/PART NO: 000040190 / 31944301000
REV 1 02-Apr-2018	

8 7 6 5 4 3 2 1



RCP-2 (PUR)  
PASS PANEL

110V CONNECTIONS  
(GRY)(PUR)(YEL)(BLU)  
SCREW  
G39-06-24U (8)  
CLAMP  
10495-01-000 (4)  
SCREW  
G39-10-12U (4)

RCP-2 (PUR)  
TV

RCP-2 (PUR)  
SOUNDBAR

RECEPTACLE-110V / USB  
000025877 / 315435-01-CHT  
BOX  
133070-01-000  
SCREW  
G13-07-12U (4)  
CONNECTOR  
8313-01-000  
TUBING-VINYL  
8041-02-000 (300 MM) ← 3  
WIRE-BONDING  
133678-01-000

RCP-2 (BLU)  
DINETTE, REAR

COVER-WIRE  
153862-02-CHT  
155469-01-CHT  
SCREW  
G67-10-12U (4)

RCP-2 (BLU)  
CHAIR

RCP-1 (GRY)  
FIREPLACE

RCP-2 (PUR)  
BDRM TV

RCP-1 (PUR)  
SOUNDBAR

RCP-B (PUR)  
CLOSET

RCP-B (RED)  
CLOSET

RCP-B (LT BLU)  
CLOSET

RCP-B (GRN)  
CLOSET

RCP-B (AWNING)  
CLOSET

RCP-1 (YEL)  
REFRIGERATOR

RCP-2 (BRN)  
DRESSER

110V CONNECTIONS  
(PUR)(BRN)  
BRACKET-110V CONNECTOR, MOUNT  
155223-05-CHT  
SCREW  
G39-06-24U (8)  
CLAMP  
10495-01-000 (4)  
SCREW  
G39-10-12U (4)

LOAD CENTER ASM  
000035124 / 317976-01-000

3 APPLY TO BARE GROUND WIRES.

2. ALL 110V WIRES TO BE CLAMPED WITH CLAMP 10497-05-000 WITHIN 200MM OF OUTLET BOXES, USE SCREW G67-10-12B.

1. AT MINIMUM ALL WIRES TO BE SUPPORTED AND SECURED PER CODE REQUIREMENTS. USE CLAMP 10495 OR 10497 OR WIRE TIE 8343 OR 108046 AND SCREW G67-XX-XXX OR G56-XX-XXX AS APPROPRIATE FOR INSTALLATION.

NOTES:

265 CODES/STANDARDS-CSA/CMVSS

1B1 CODES/STANDARDS USA

1B1 265

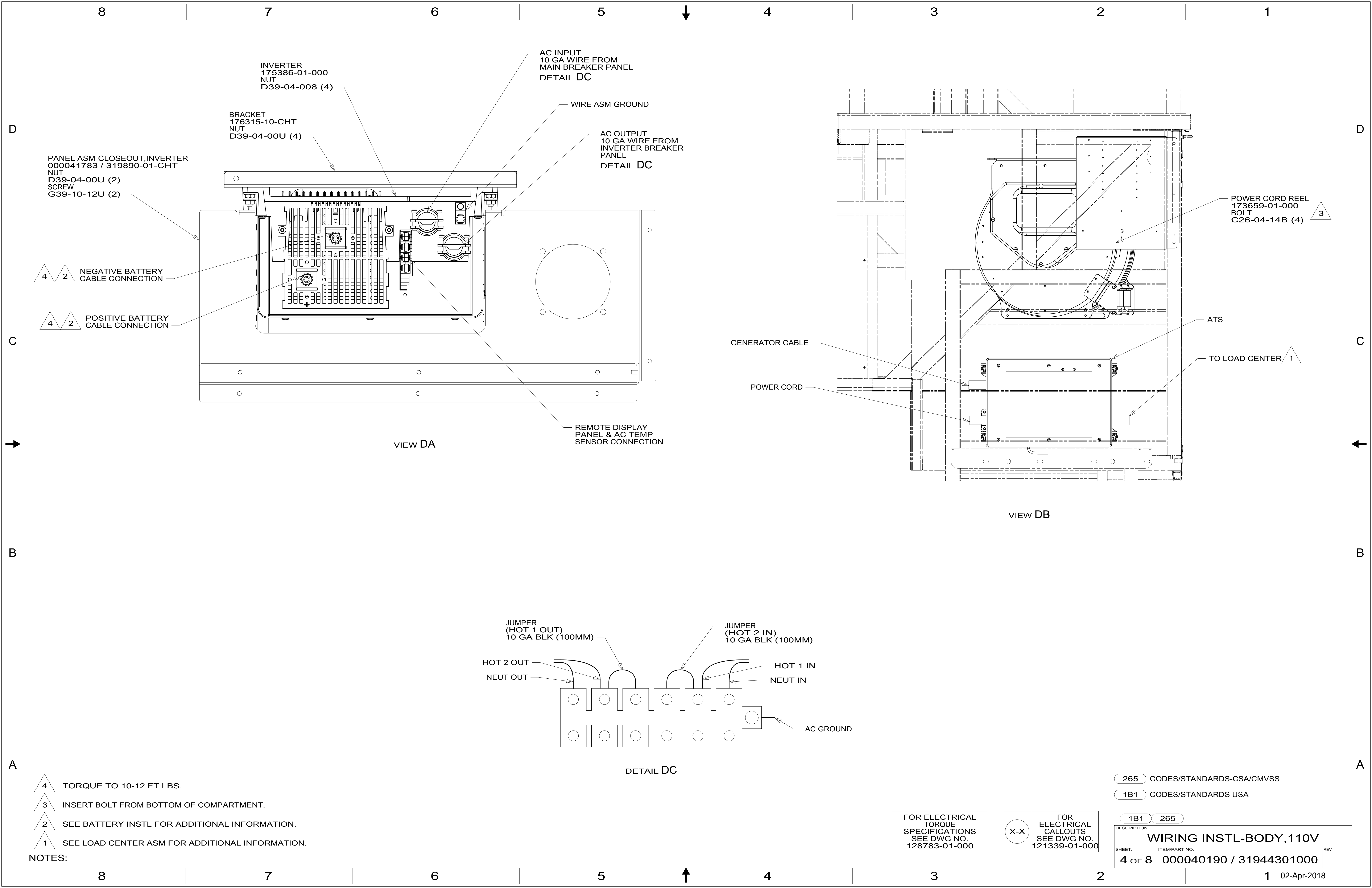
FOR ELECTRICAL TORQUE SPECIFICATIONS SEE DWG NO. 128783-01-000

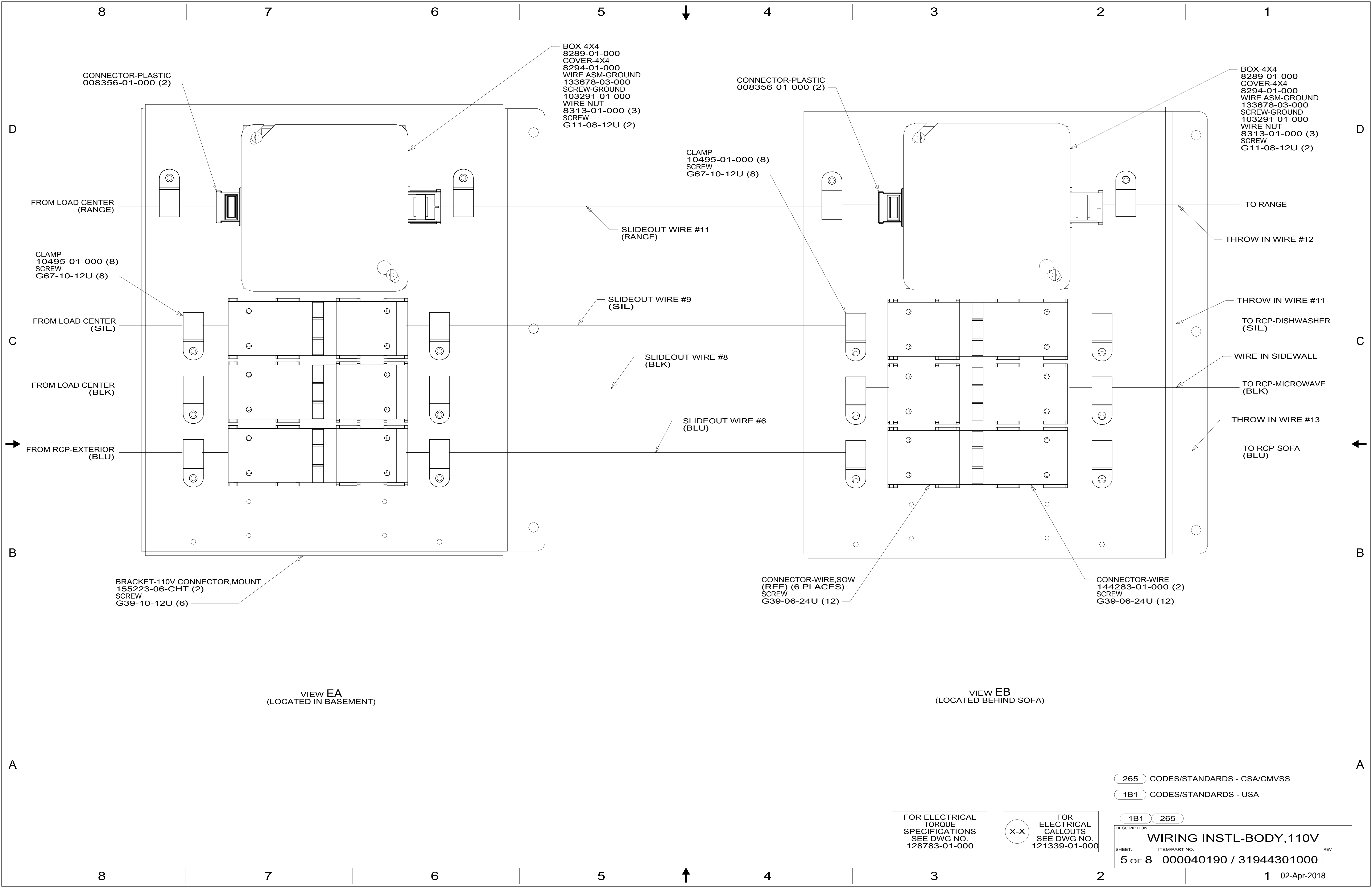
FOR ELECTRICAL CALLOUTS SEE DWG NO. 121339-01-000

DESCRIPTION:  
**WIRING INSTL-BODY, 110V**

SHEET: 3 OF 8 ITEM/PART NO: 000040190 / 31944301000 REV

1 02-Apr-2018





CONNECTOR-PLASTIC  
008356-01-000 (2)

BOX-4X4  
8289-01-000  
COVER-4X4  
8294-01-000  
WIRE ASM-GROUND  
133678-03-000  
SCREW-GROUND  
103291-01-000  
WIRE NUT  
8313-01-000 (3)  
SCREW  
G11-08-12U (2)

CONNECTOR-PLASTIC  
008356-01-000 (2)

BOX-4X4  
8289-01-000  
COVER-4X4  
8294-01-000  
WIRE ASM-GROUND  
133678-03-000  
SCREW-GROUND  
103291-01-000  
WIRE NUT  
8313-01-000 (3)  
SCREW  
G11-08-12U (2)

FROM LOAD CENTER  
(RANGE)

CLAMP  
10495-01-000 (8)  
SCREW  
G67-10-12U (8)

TO RANGE

CLAMP  
10495-01-000 (8)  
SCREW  
G67-10-12U (8)

SLIDEOUT WIRE #11  
(RANGE)

THROW IN WIRE #12

FROM LOAD CENTER  
(SIL)

SLIDEOUT WIRE #9  
(SIL)

THROW IN WIRE #11  
TO RCP-DISHWASHER  
(SIL)

FROM LOAD CENTER  
(BLK)

SLIDEOUT WIRE #8  
(BLK)

WIRE IN SIDEWALL  
TO RCP-MICROWAVE  
(BLK)

FROM RCP-EXTERIOR  
(BLU)

SLIDEOUT WIRE #6  
(BLU)

THROW IN WIRE #13  
TO RCP-SOFA  
(BLU)

BRACKET-110V CONNECTOR,MOUNT  
155223-06-CHT (2)  
SCREW  
G39-10-12U (6)

CONNECTOR-WIRE,SOW  
(REF) (6 PLACES)  
SCREW  
G39-06-24U (12)

CONNECTOR-WIRE  
144283-01-000 (2)  
SCREW  
G39-06-24U (12)

VIEW EA  
(LOCATED IN BASEMENT)

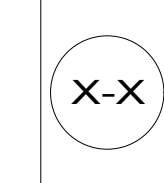
VIEW EB  
(LOCATED BEHIND SOFA)

265 CODES/STANDARDS - CSA/CMVSS

1B1 CODES/STANDARDS - USA

1B1 265

FOR ELECTRICAL  
TORQUE  
SPECIFICATIONS  
SEE DWG NO.  
128783-01-000



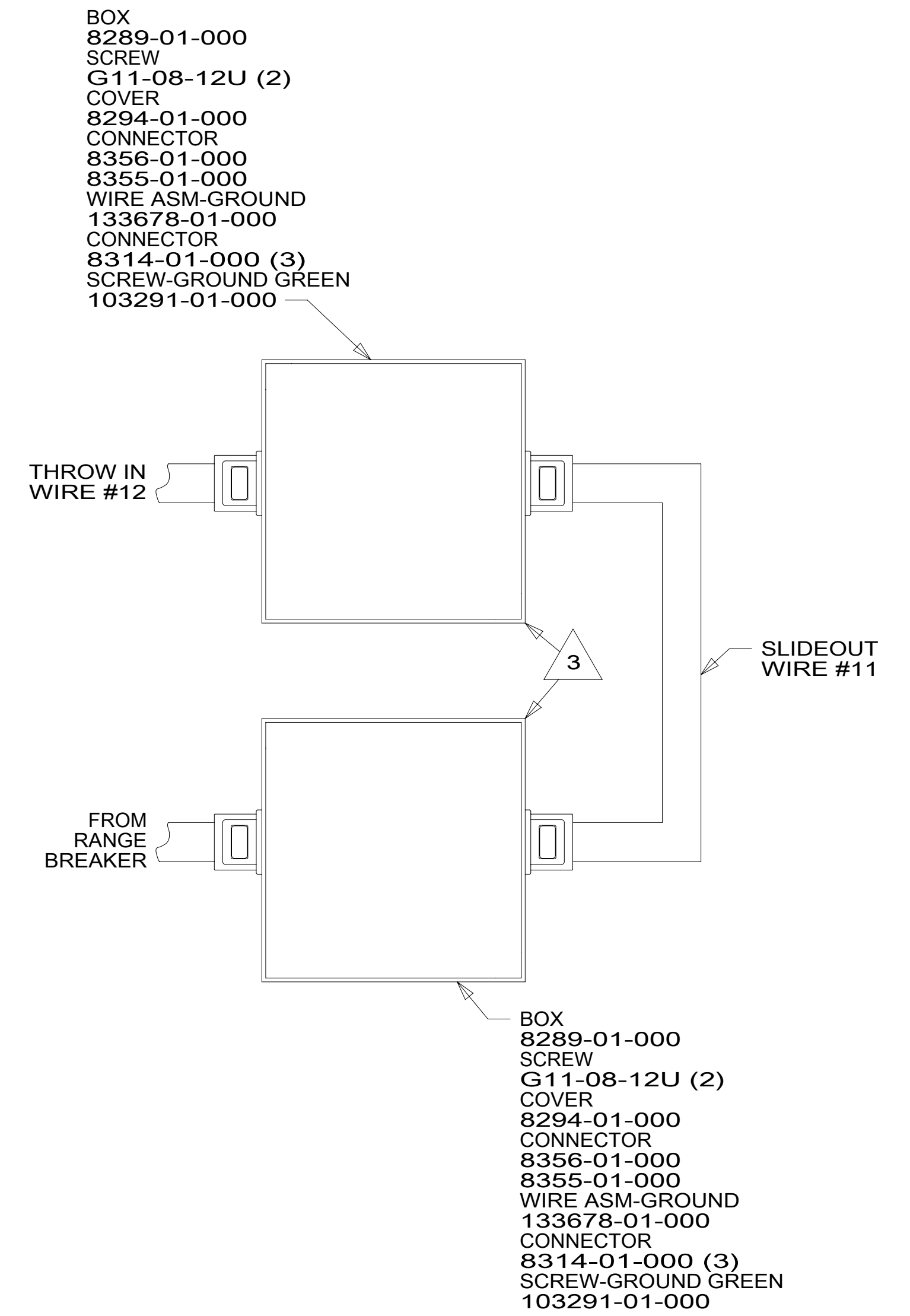
FOR ELECTRICAL  
CALLOUTS  
SEE DWG NO.  
121339-01-000

DESCRIPTION:  
**WIRING INSTL-BODY, 110V**

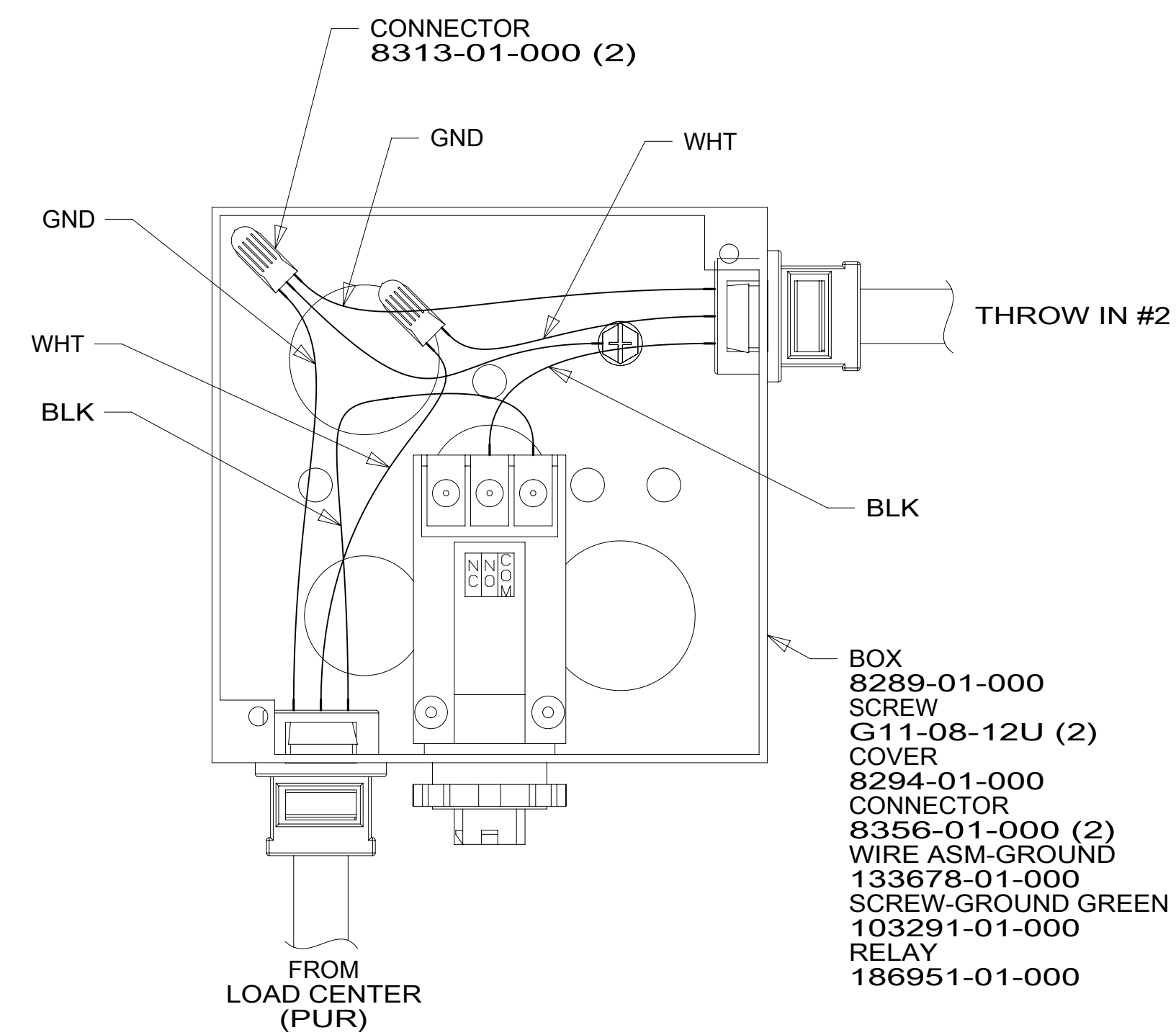
SHEET: 5 OF 8 ITEM/PART NO: 000040190 / 31944301000 REV

RED	1B1	136135-07-039
	265	136136-07-039
MAIN	1B1	174031-01-097
	265	174031-01-097
GRN	1B1	136135-08-039
	265	136136-08-039
LT BLU	1B1	136135-21-039
	265	136136-21-039
INVERTER CHARGER MAIN	1B1	136137-01-147
	265	136138-01-147
YEL	1B1	136131-05-178 <sup>1</sup>
	265	136134-05-178 <sup>1</sup>
GLD	1B1	136131-10-068
	265	136134-10-068
GLD-2	1B1	136131-20-068
	265	136134-20-068
WHT	1B1	136135-09-119
	265	136136-09-119
RANGE	1B1	136135-01-149 <sup>2</sup>
	265	136136-01-149 <sup>2</sup>
AWNING	1B1	136131-01-039
	265	136134-01-039

INVERTER CHARGER SUB MAIN	1B1	136137-01-147
	265	136138-01-147
BLU	1B1	136131-02-284 <sup>1</sup>
	265	136134-02-284 <sup>1</sup>
BRN	1B1	136131-03-208 <sup>1</sup>
	265	136134-03-208 <sup>1</sup>
PUR	1B1	136131-04-059 <sup>4</sup>
	265	136134-04-059 <sup>4</sup>
ORG	1B1	136131-16-061
	265	136134-16-061
BLK	1B1	136131-06-147 <sup>1</sup>
	265	136134-06-147 <sup>1</sup>
SIL	1B1	136131-11-147 <sup>1</sup>
	265	136134-11-147 <sup>1</sup>
GRY	1B1	136131-15-151 <sup>1</sup>
	265	136134-15-151 <sup>1</sup>
GROUND MAIN		136145-01-111
GROUND ATS		136145-01-030
GROUND INVERTER		136145-04-007
CABLE ASM GEN		174031-03-095



DETAIL FA



DETAIL FB

- NOTES:
- <sup>4</sup> SEE DETAIL FB.
  - <sup>3</sup> CONNECT WIRES, WHT TO WHT, BLK TO BLK, GROUNDS TO GROUNDS, KEEPING CIRCUITS SEPERATED.
  - <sup>2</sup> SEE DETAIL FA FOR CONNECTOR INSTALLATION.
  - <sup>1</sup> SEE DETAIL GA FOR CONNECTOR INSTALLATION.

FOR ELECTRICAL TORQUE SPECIFICATIONS SEE DWG NO. 128783-01-000

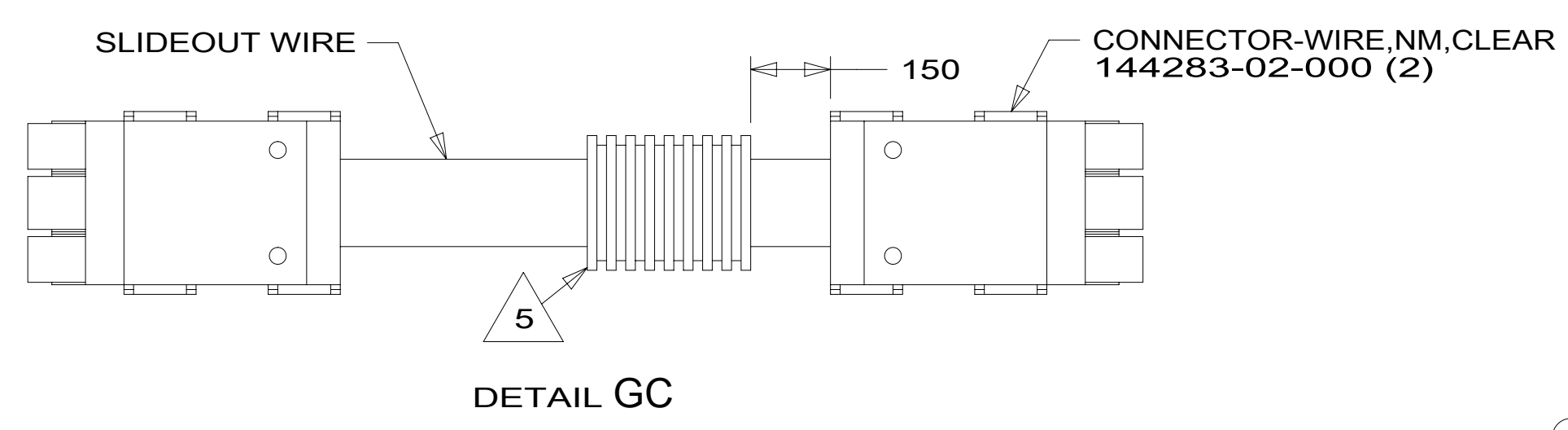
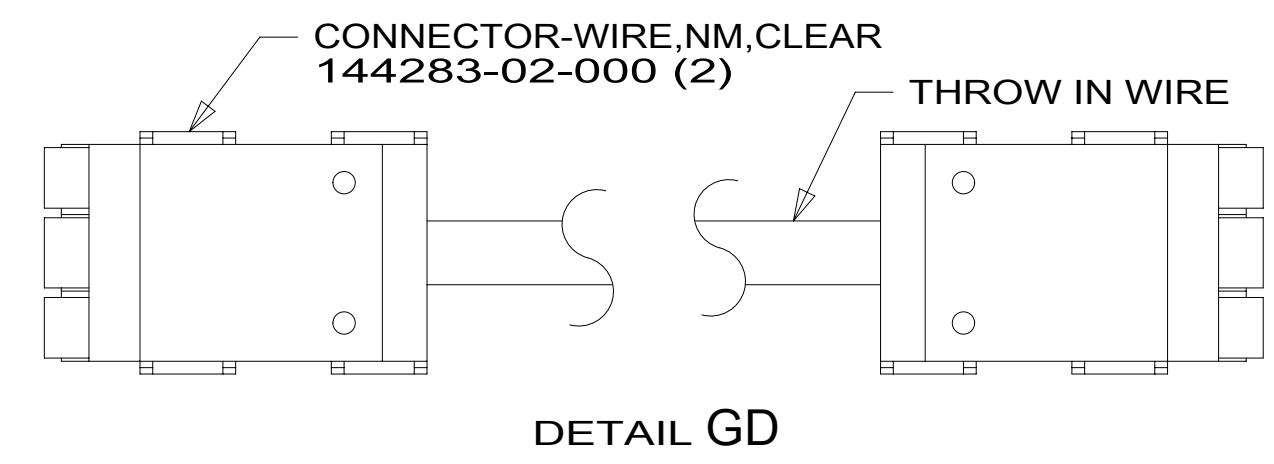
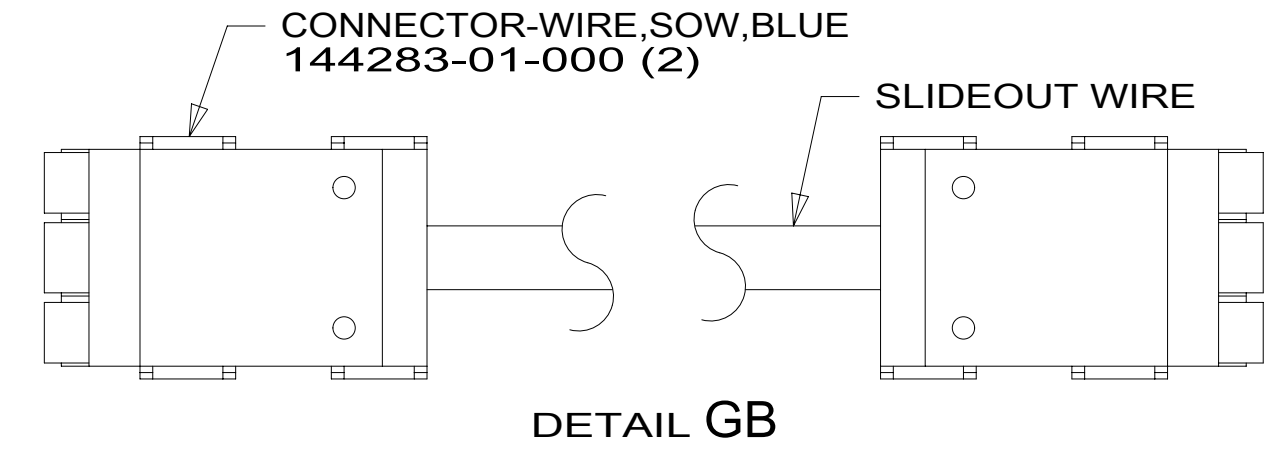
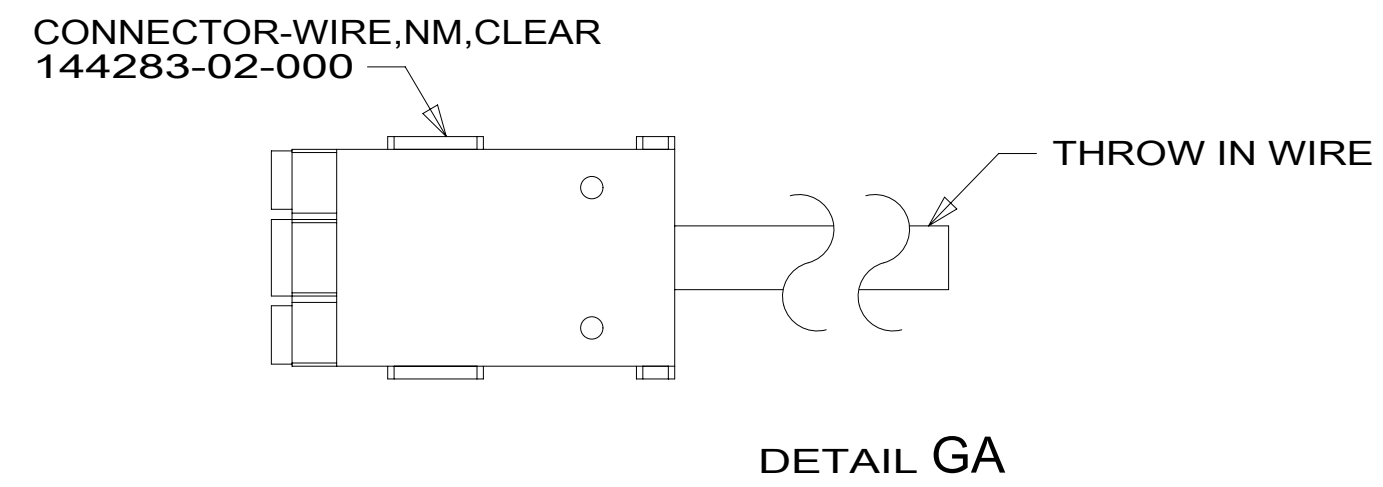
FOR ELECTRICAL CALLOUTS SEE DWG NO. 121339-01-000

- 265 CODES/STANDARDS - CSA/CMVSS
- 1B1 CODES/STANDARDS - USA

DESCRIPTION:	
<b>WIRING INSTL-BODY, 110V</b>	
SHEET: 6 OF 8	ITEM/PART NO: 000040190 / 31944301000
REV	

SLIDEOUT WIRE #1		136151-03-034	△2
SLIDEOUT WIRE #2		136151-04-034	△2
SLIDEOUT WIRE #3		136151-05-037	△4
SLIDEOUT WIRE #4		136151-15-037	△4
SLIDEOUT WIRE #5		136151-04-037	△4
SLIDEOUT WIRE #6		136151-02-037	△4
SLIDEOUT WIRE #7		136151-04-022	△2
SLIDEOUT WIRE #8		136151-06-034	△2
SLIDEOUT WIRE #9		136151-11-034	△2
SLIDEOUT WIRE #10		136151-02-034	△2
SLIDEOUT WIRE #11		136152-01-034	△6
THROW IN WIRE #1	1B1	136131-04-033	△1
	265	136134-04-033	△1
THROW IN WIRE #2	1B1	136131-04-003	
	265	136134-04-003	
THROW IN WIRE #3	1B1	136131-03-026	△1
	265	136134-03-026	△1

THROW IN WIRE #4	1B1	136131-04-082	△3
	265	136134-04-082	△3
THROW IN WIRE #5	1B1	136131-04-065	△1
	265	136134-04-065	△1
THROW IN WIRE #6	1B1	136131-04-051	△1
	265	136134-04-051	△1
THROW IN WIRE #7	1B1	136131-05-075	△1
	265	136134-05-075	△1
THROW IN WIRE #8	1B1	136131-02-012	△1
	265	136134-02-012	△1
THROW IN WIRE #9	1B1	136131-02-068	△1
	265	136134-02-068	△1
THROW IN WIRE #10	1B1	136131-15-035	△1
	265	136134-15-035	△1
THROW IN WIRE #11	1B1	136131-11-041	△1
	265	136134-11-041	△1
THROW IN WIRE #12	1B1	136135-01-041	△6
	265	136136-01-041	△6
THROW IN WIRE #13	1B1	136135-02-023	△1
	265	136136-02-023	△1
THROW IN WIRE #14	1B1	136131-04-074	△1
	265	136134-04-074	△1



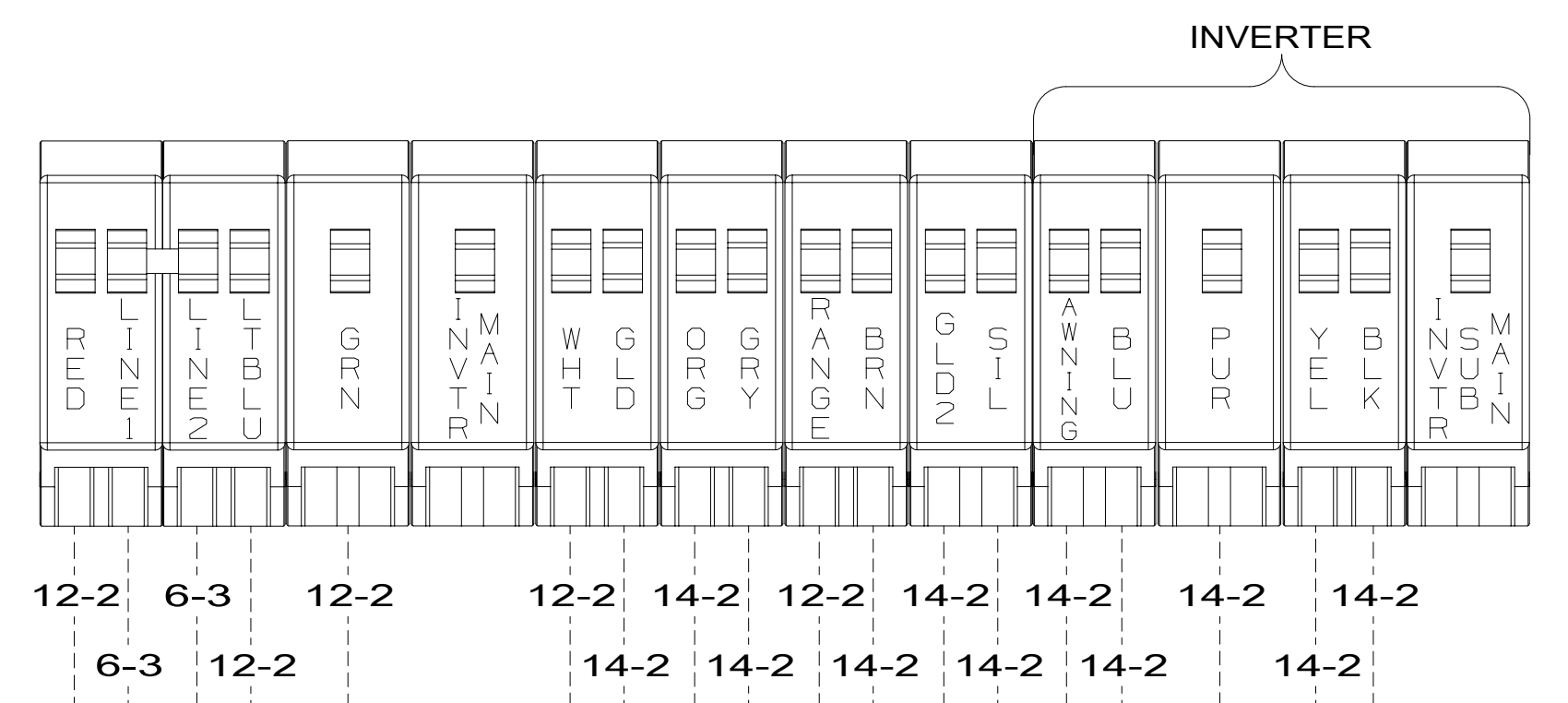
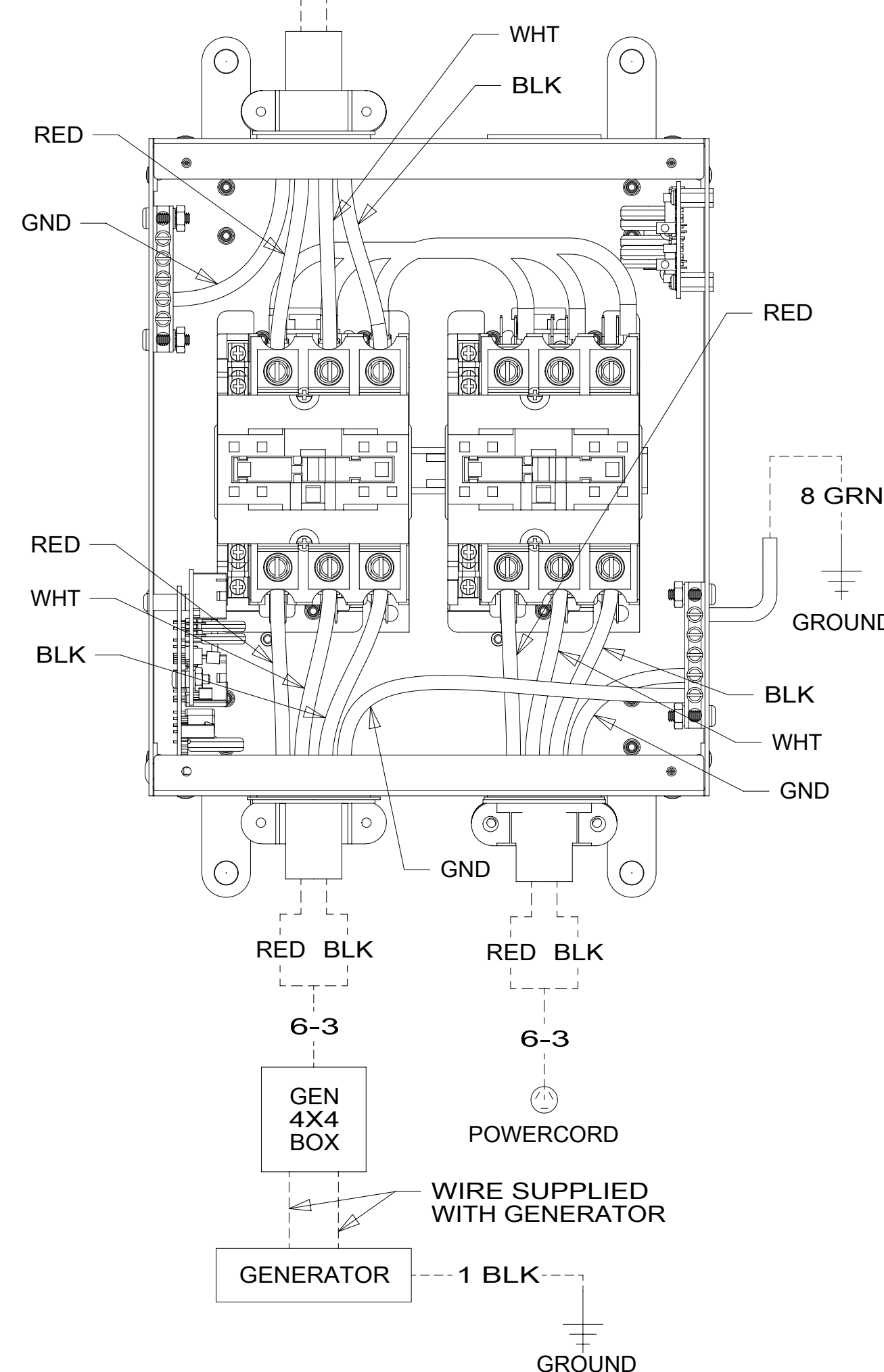
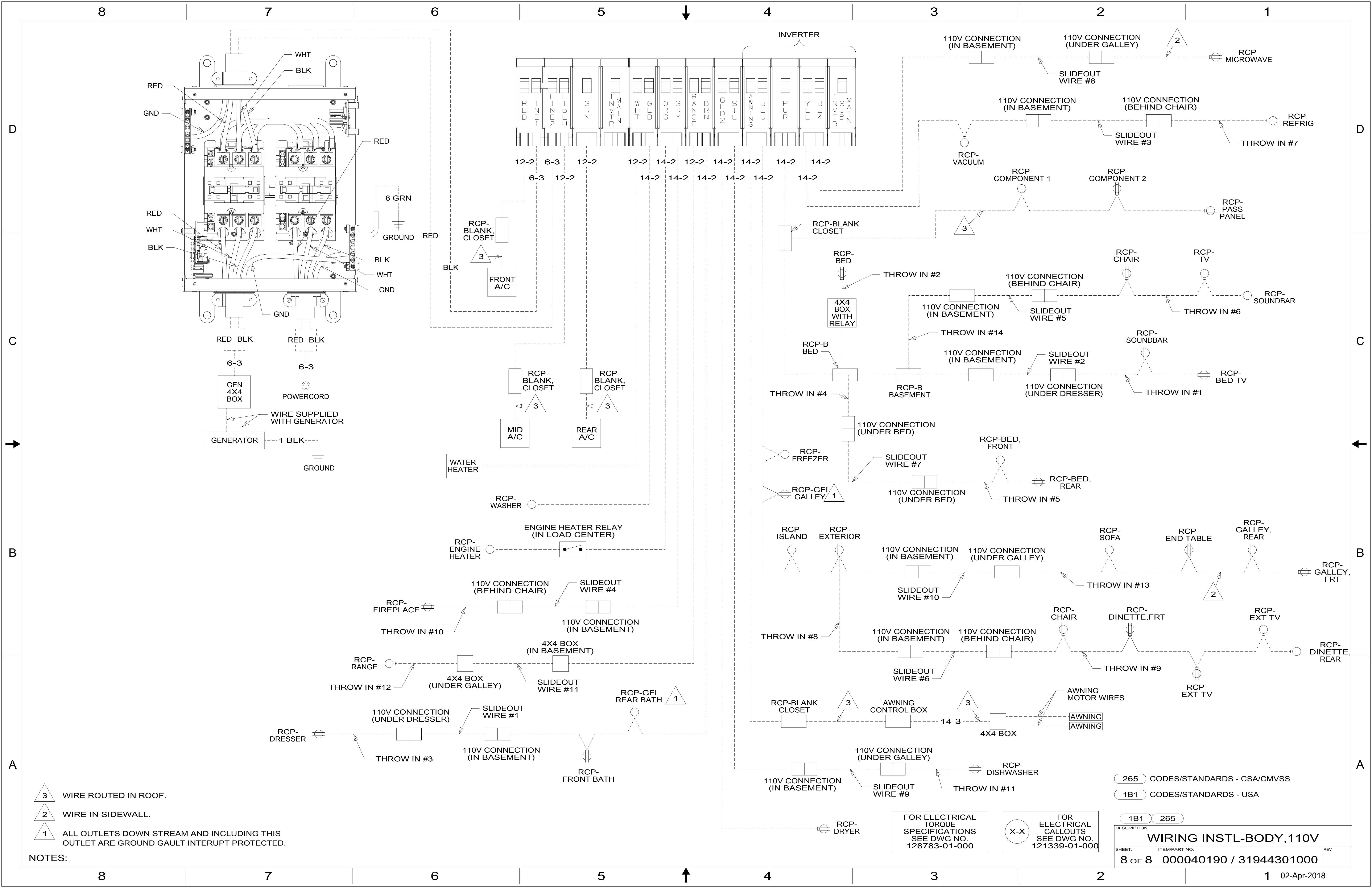
- NOTES:
- △6 SEE DETAIL FA.
  - △5 APPLY 300MM OF CONDUIT-CONVOLUTE 41953-05-000 OVER WIRE AT DIMENSION SHOWN AND SECURE BOTH ENDS OF TUBING TO WIRE WITH TAPE 8363-01-000.
  - △4 SEE DETAIL GC FOR CONNECTOR INSTALLATION.
  - △3 SEE DETAIL GD FOR CONNECTOR INSTALLATION.
  - △2 SEE DETAIL GB FOR CONNECTOR INSTALLATION.
  - △1 SEE DETAIL GA FOR CONNECTOR INSTALLATION.

FOR ELECTRICAL TORQUE SPECIFICATIONS SEE DWG NO. 128783-01-000

FOR ELECTRICAL CALLOUTS SEE DWG NO. 121339-01-000

265 CODES/STANDARDS - CSA/CMVSS  
1B1 CODES/STANDARDS - USA

DESCRIPTION: <b>WIRING INSTL-BODY, 110V</b>		
SHEET: 7 OF 8	ITEM/PART NO: 000040190 / 31944301000	REV



NOTES:

- 3 WIRE ROUTED IN ROOF.
- 2 WIRE IN SIDEWALL.
- 1 ALL OUTLETS DOWN STREAM AND INCLUDING THIS OUTLET ARE GROUND GAULT INTERRUPT PROTECTED.

FOR ELECTRICAL TORQUE SPECIFICATIONS SEE DWG NO. 128783-01-000

FOR ELECTRICAL CALLOUTS SEE DWG NO. 121339-01-000

265	CODES/STANDARDS - CSA/CMVSS
1B1	CODES/STANDARDS - USA
1B1	265
DESCRIPTION: <b>WIRING INSTL-BODY, 110V</b>	
SHEET: 8 OF 8	ITEM/PART NO.: 000040190 / 31944301000
REV 02-Apr-2018	