

D

C

B

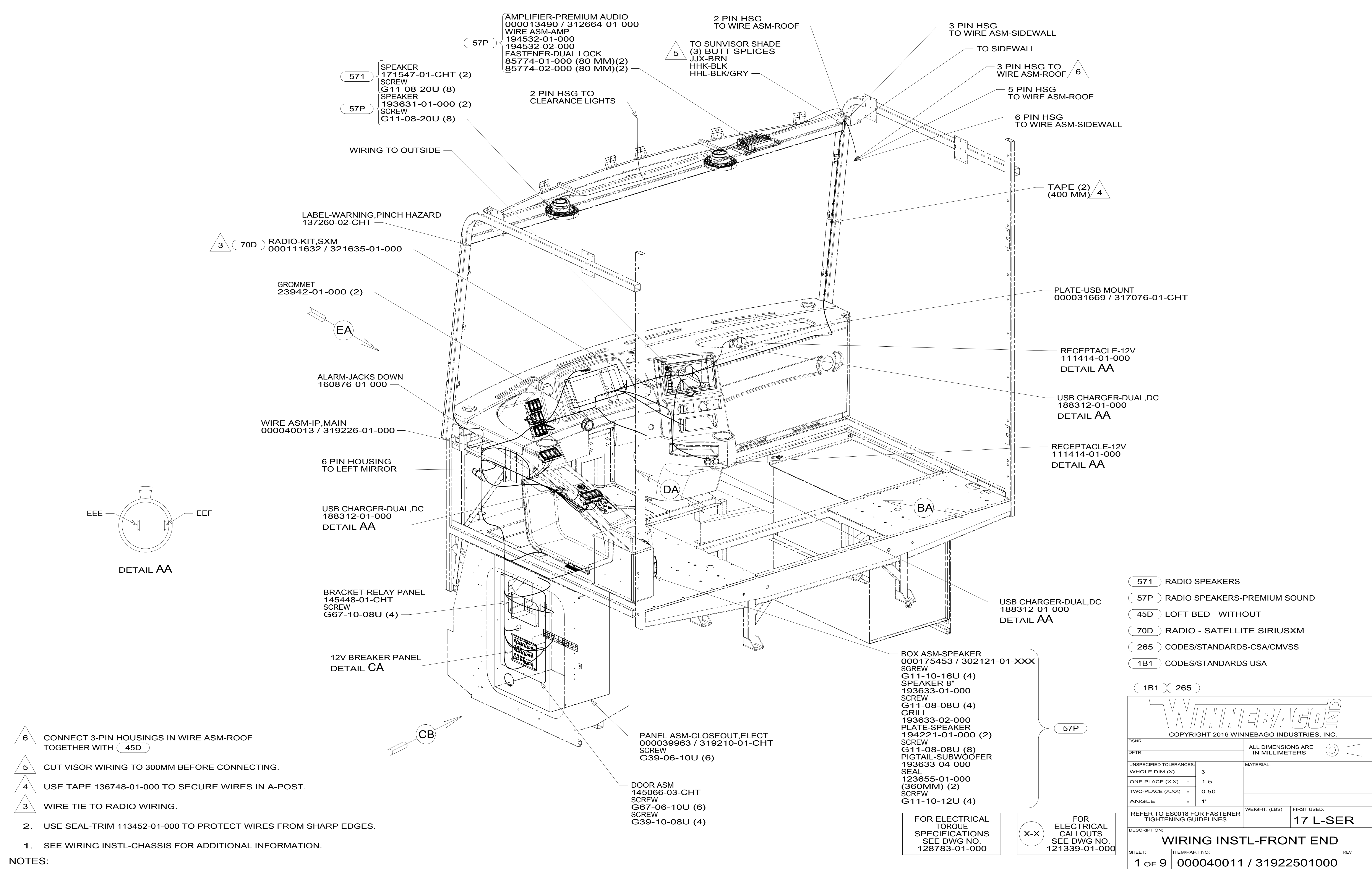
A

D

C

B

A



- 6 CONNECT 3-PIN HOUSINGS IN WIRE ASM-ROOF TOGETHER WITH 45D
- 5 CUT VISOR WIRING TO 300MM BEFORE CONNECTING.
- 4 USE TAPE 136748-01-000 TO SECURE WIRES IN A-POST.
- 3 WIRE TIE TO RADIO WIRING.

- 2. USE SEAL-TRIM 113452-01-000 TO PROTECT WIRES FROM SHARP EDGES.
- 1. SEE WIRING INSTL-CHASSIS FOR ADDITIONAL INFORMATION.

NOTES:

- 571 RADIO SPEAKERS
- 57P RADIO SPEAKERS-PREMIUM SOUND
- 45D LOFT BED - WITHOUT
- 70D RADIO - SATELLITE SIRIUSXM
- 265 CODES/STANDARDS-CSA/CMVSS
- 1B1 CODES/STANDARDS USA

1B1 265

COPYRIGHT 2016 WINNEBAGO INDUSTRIES, INC.

DSNR:	ALL DIMENSIONS ARE IN MILLIMETERS
DFFR:	
UNSPECIFIED TOLERANCES:	MATERIAL:
WHOLE DIM (X) : 3	
ONE-PLACE (X.X) : 1.5	
TWO-PLACE (X.XX) : 0.50	
ANGLE : 1°	
REFER TO ES0018 FOR FASTENER TIGHTENING GUIDELINES	WEIGHT: (LBS) FIRST USED: 17 L-SER
DESCRIPTION: WIRING INSTL-FRONT END	
SHEET: 1 OF 9	ITEM/PART NO: 000040011 / 31922501000
REF:	1 07-Sep-2018

FOR ELECTRICAL TORQUE SPECIFICATIONS SEE DWG NO. 128783-01-000

FOR ELECTRICAL CALLOUTS SEE DWG NO. 121339-01-000

WIRE ASM-IP,MAIN

LABEL-CB PREP OPTION  
104678-01-000

CB POWER PROVISION  
YELLOW +12V  
WHITE GROUND  
COAX ANTENNA  
(SEE REVERSE SIDE ALSO)

WHT YEL

TO CUSTOMERS  
CB RADIO

DETAIL BB 579

1 2 PIN HOUSING  
(2) BUTT SPLICES

TO SWITCHES  
DETAIL DA

RING TERMINALS  
TO GROUND STUD

2 & 6 PIN HOUSINGS  
TO LEFT MIRROR

(2) BUTT SPLICES  
TO CB PREP  
DETAIL BB

TO SWITCHES  
DETAIL DA

SPADE TERMINAL  
TO USB CHARGER

TO SWITCHES  
DETAIL DA

2 & 6 PIN HOUSINGS  
TO HEATER/AC CONTROLS

TO WIRE ASM-RADIO  
DETAIL HA

DETAIL BA

2 EDGE OF LABEL TO HANG JUST BELOW BOTTOM OF DASH.

1 ROUTE WIRES UP LEFT A-PILLAR.

NOTES:

FOR ELECTRICAL  
TORQUE  
SPECIFICATIONS  
SEE DWG NO.  
128783-01-000

X-X FOR  
ELECTRICAL  
CALLOUTS  
SEE DWG NO.  
121339-01-000

579 RADIO - CB WIRE PREP

265 CODES/STANDARDS-CSA/CMVSS

1B1 CODES/STANDARDS USA

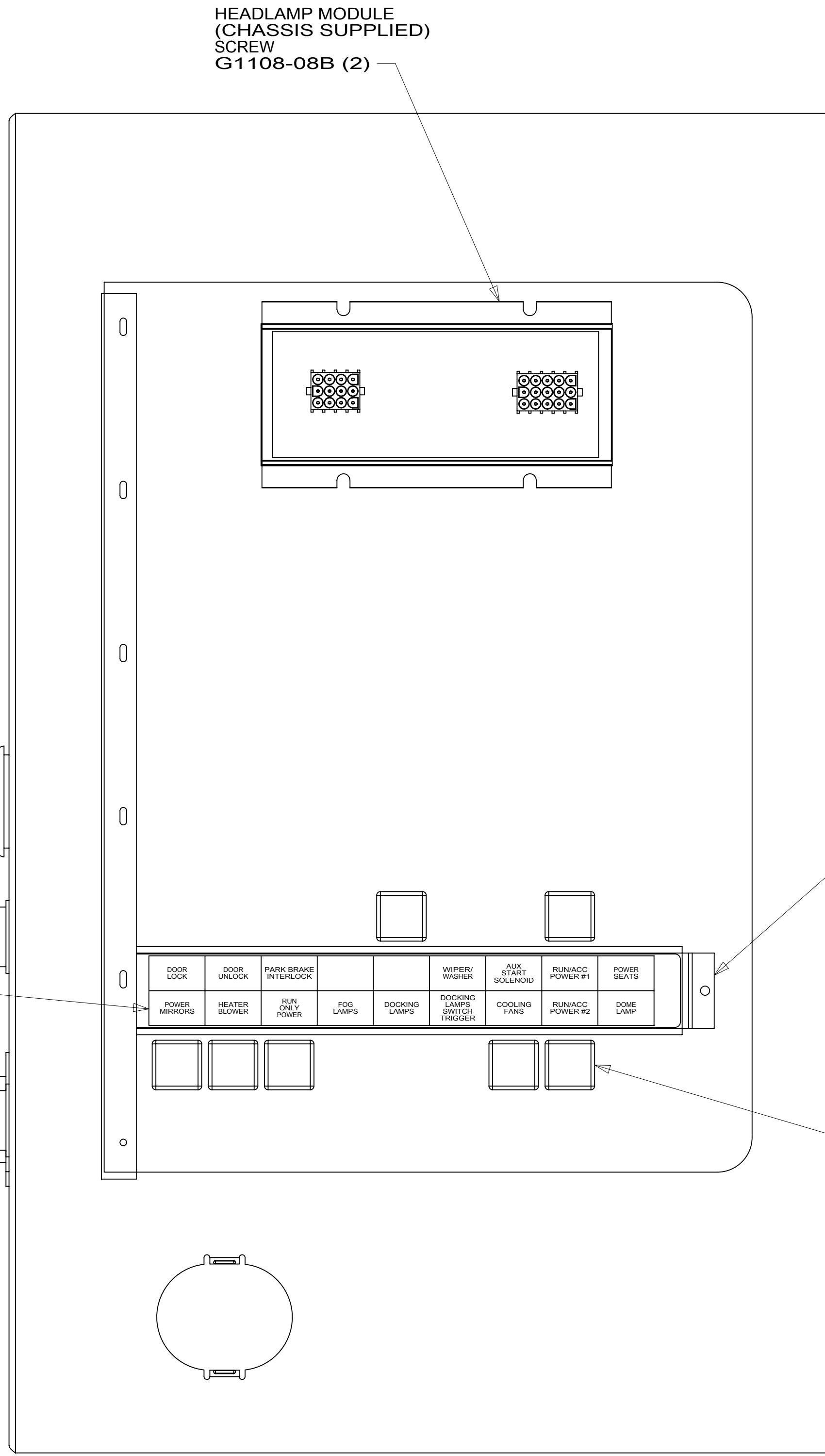
1B1 265

DESCRIPTION:  
WIRING INSTL-FRONT END

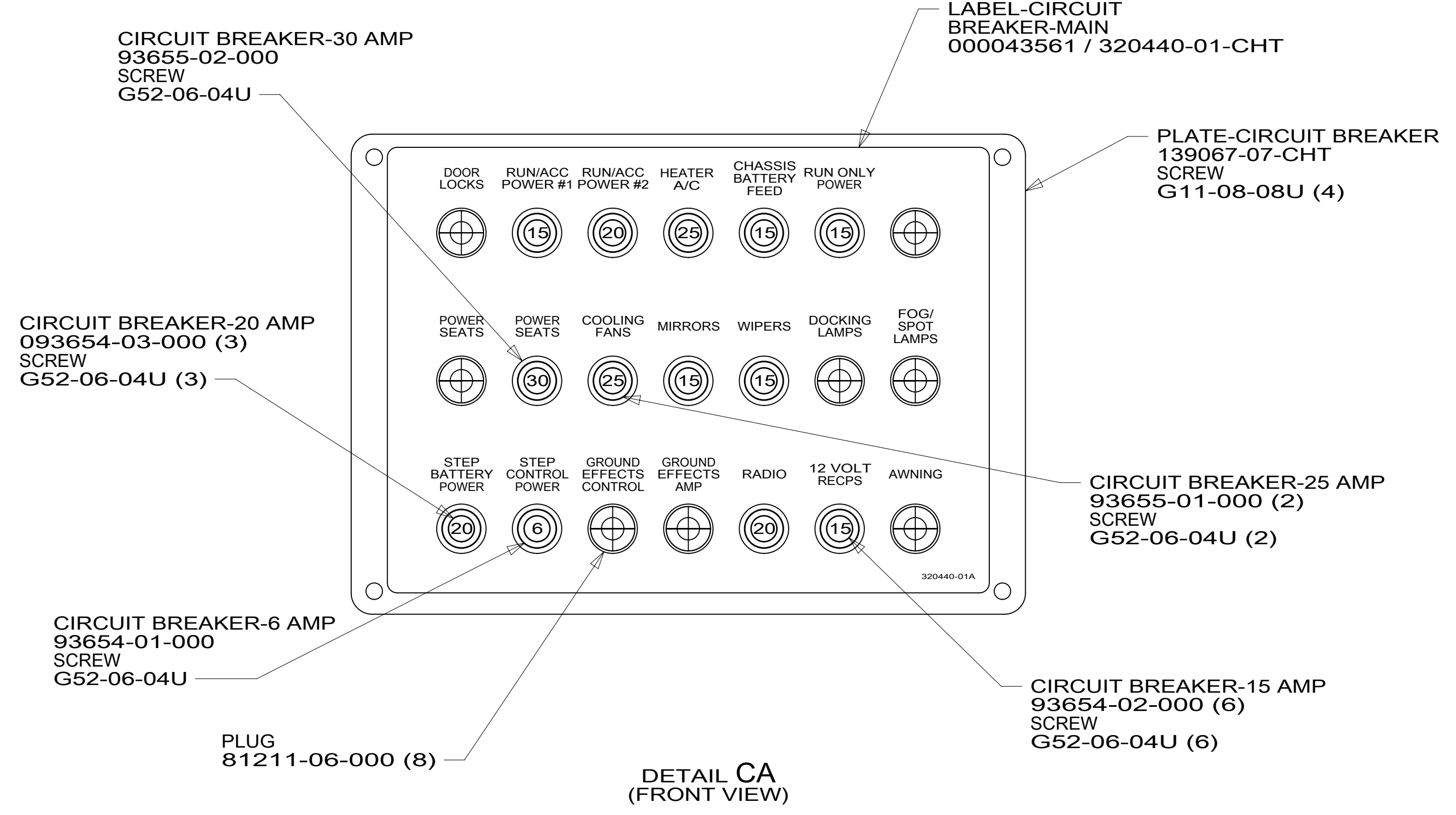
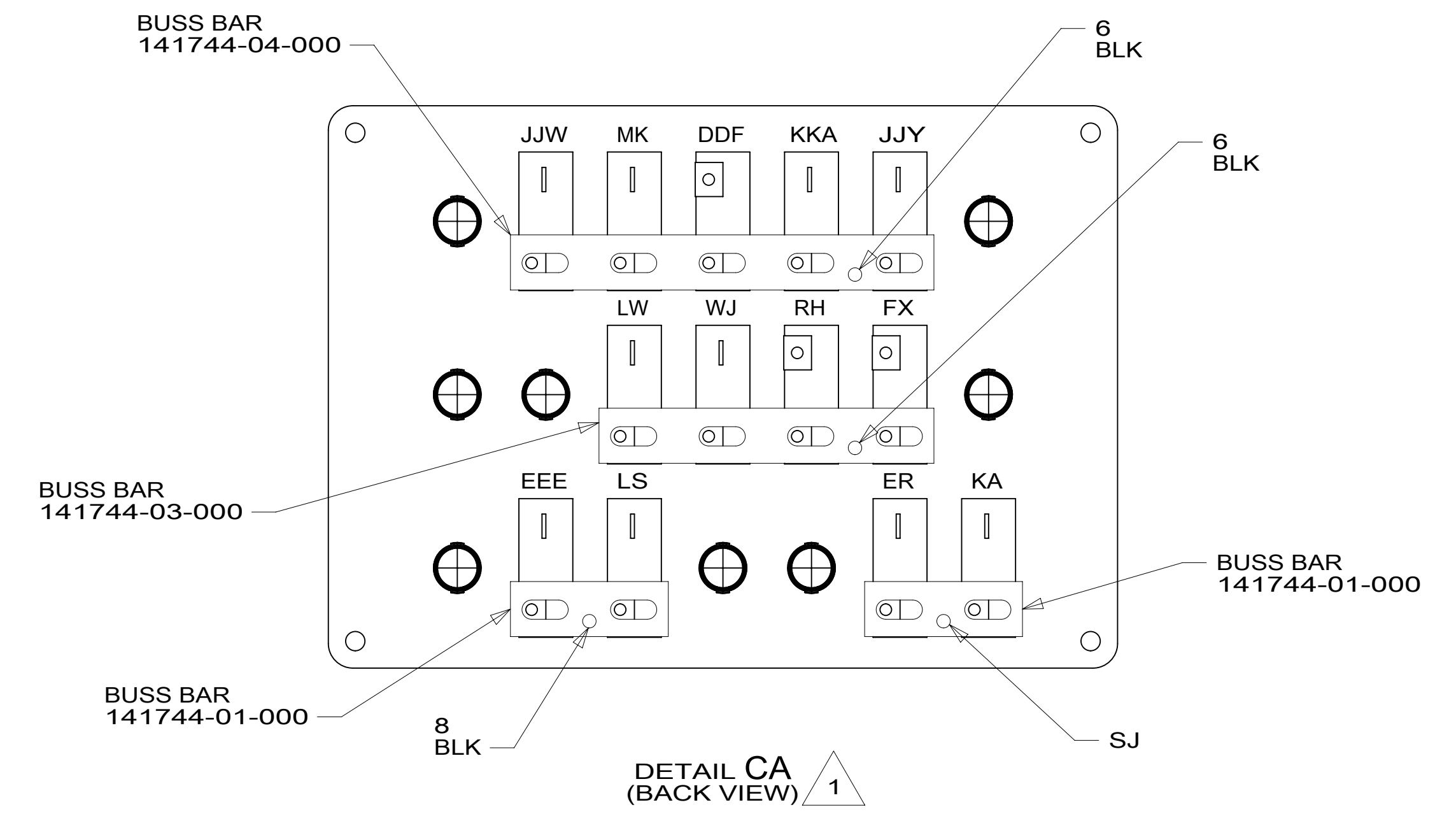
SHEET: 2 OF 9 ITEM/PART NO: 000040011 / 31922501000 REV

1 07-Sep-2018

8 7 6 5 4 3 2 1



VIEW CB  
(WITH COVER REMOVED) 3



- NOTES:
- 3 SEAL ALL SCREWS ON EXTERIOR SIDE OF COMPARTMENT. REFER TO SEALANT MANUAL.
  - 2 CIRCUIT FFD IS PART OF WIRE ASM-CHASSIS.
  - 1 CIRCUITS LABELED ON BREAKER ARE FROM WIRE ASM-IP, MAIN, UNLESS OTHERWISE SPECIFIED.

FOR ELECTRICAL TORQUE SPECIFICATIONS SEE DWG NO. 128783-01-000

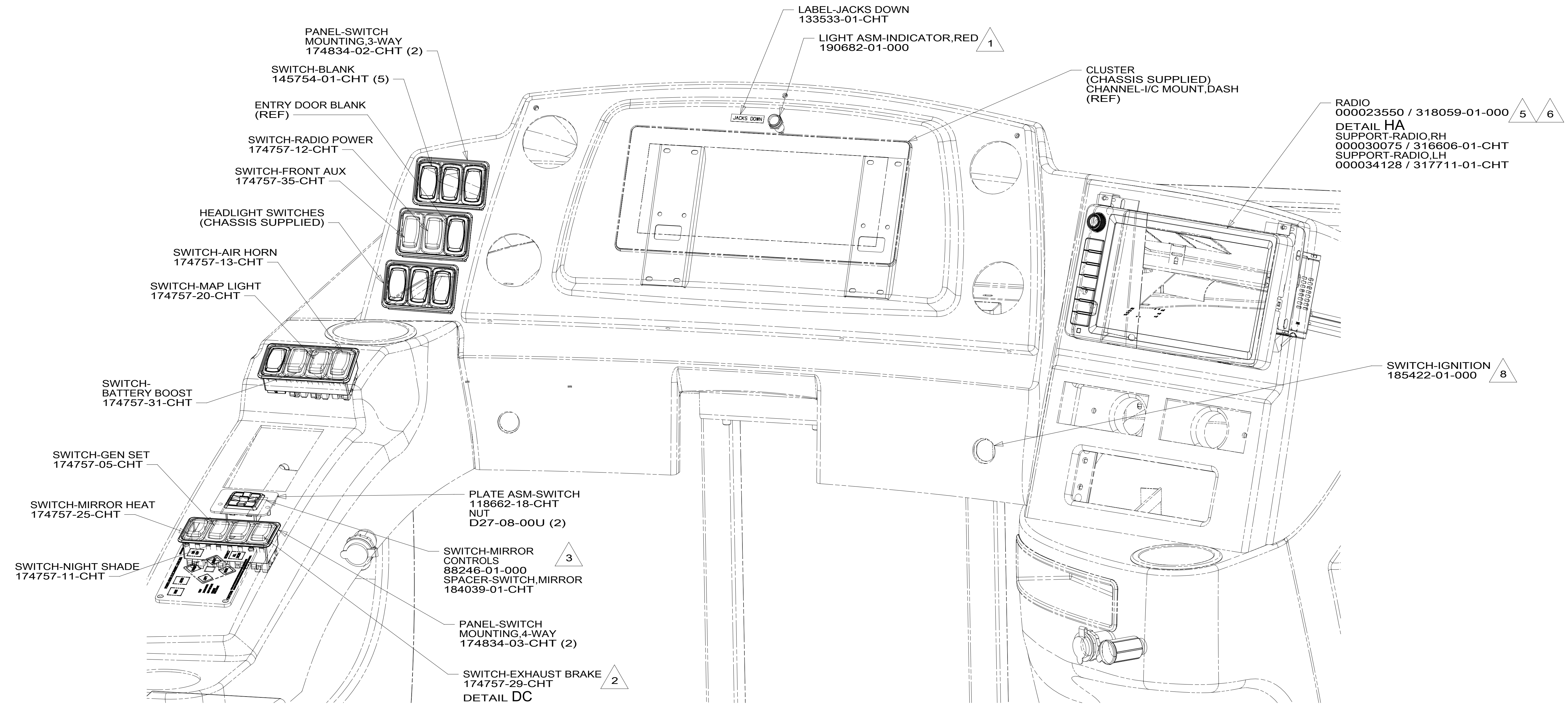
FOR ELECTRICAL CALLOUTS SEE DWG NO. 121339-01-000

265 CODES/STANDARDS-CSA/CMVSS  
1B1 CODES/STANDARDS USA

DESCRIPTION: <b>WIRING INSTL-FRONT END</b>	
SHEET: 3 OF 9	ITEM/PART NO: 000040011 / 31922501000
REV 07-Sep-2018	

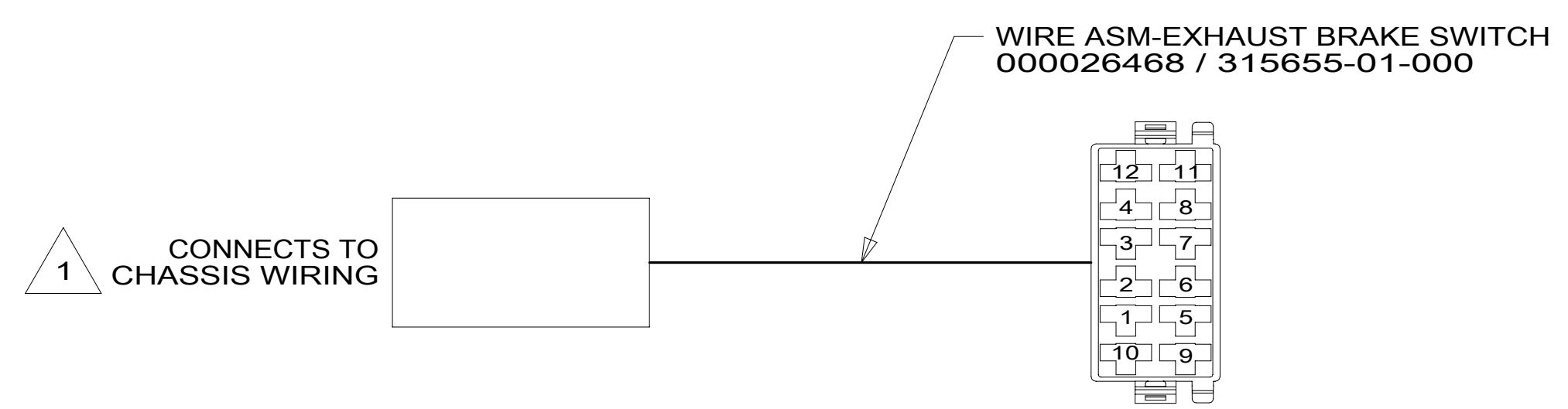
8 7 6 5 4 3 2 1





DETAIL DA

- 8 REPLACE CHASSIS SUPPLIED IGNITION SWITCH.
- 7. APPLY TAPE 8363-01-000 AS NECESSARY TO SECURE NON-LOCKING CONNECTIONS.
- 6 ATTACH TO RADIO WITH SCREW SUPPLIED WITH RADIO.
- 5 PLUG USB CABLE INTO LEAD ON BACK OF RADIO MARKED 'USB' ROUTE CABLE TO DASH POCKET BELOW RADIO.
- 4
- 3 MOUNT SWITCH SO WHEN ACTUATOR IS PUSHED LEFT, THE LETTER L IS SHOWING.
- 2 CONNECT TO MATING LABELED CONNECTOR ON CHASSIS SUPPLIED WIRING.
- 1 CONNECT POSITIVE WIRE TO TERMINAL MARKED WITH A "+", YEL-WINNEBAGO WIRING RED-HWH WIRING



DETAIL DC

FOR ELECTRICAL TORQUE SPECIFICATIONS SEE DWG NO. 128783-01-000

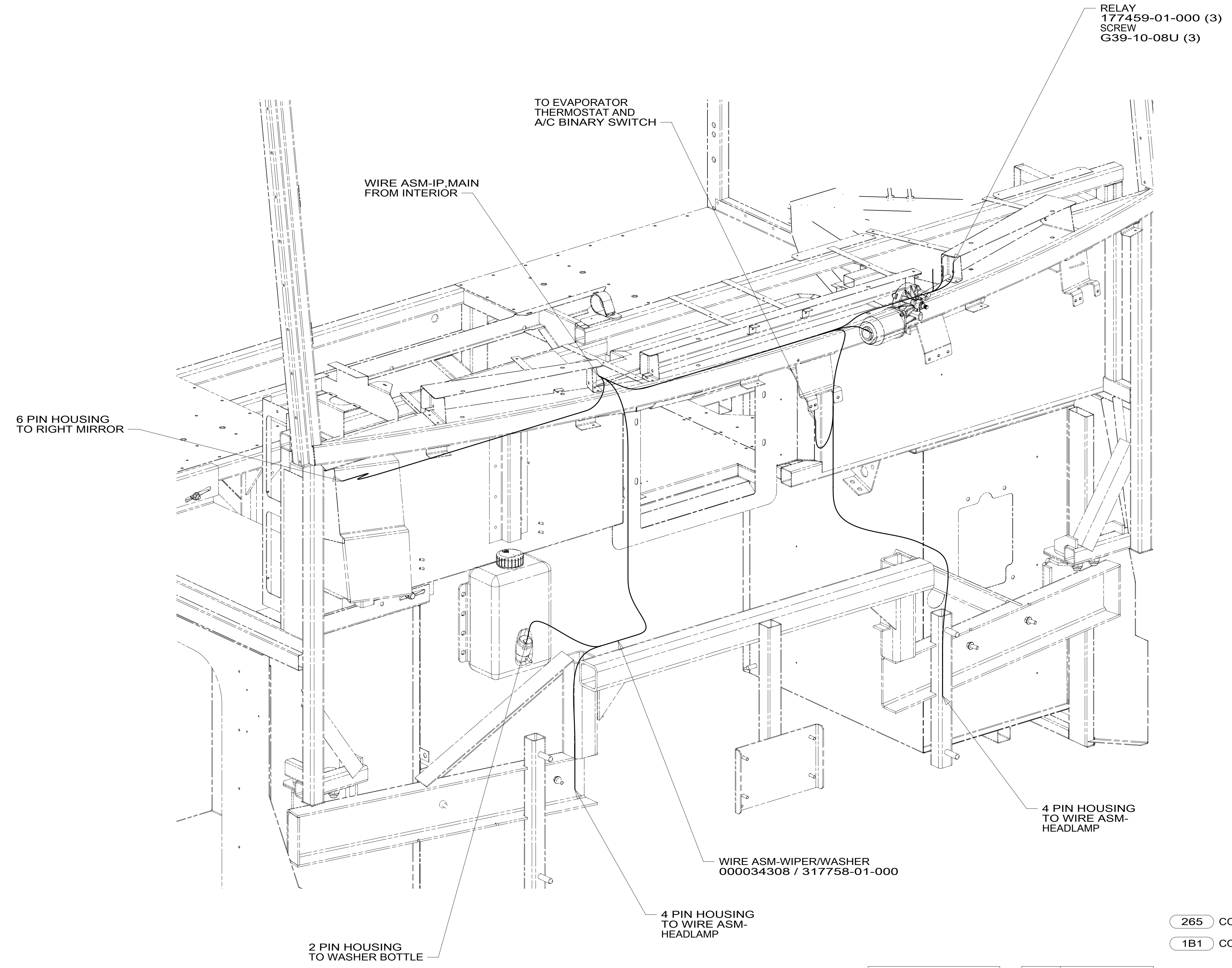
X-X FOR ELECTRICAL CALLOUTS SEE DWG NO. 121339-01-000

265 CODES/STANDARDS-CSA/CMVSS  
1B1 CODES/STANDARDS USA

DESCRIPTION:		1B1 265
<b>WIRING INSTL-FRONT END</b>		
SHEET:	ITEM/PART NO.:	REV
4 OF 9	000040011 / 31922501000	

8 7 6 5 4 3 2 1

D  
C  
B  
A



VIEW EA

FOR ELECTRICAL TORQUE SPECIFICATIONS SEE DWG NO. 128783-01-000

FOR ELECTRICAL CALLOUTS SEE DWG NO. 121339-01-000

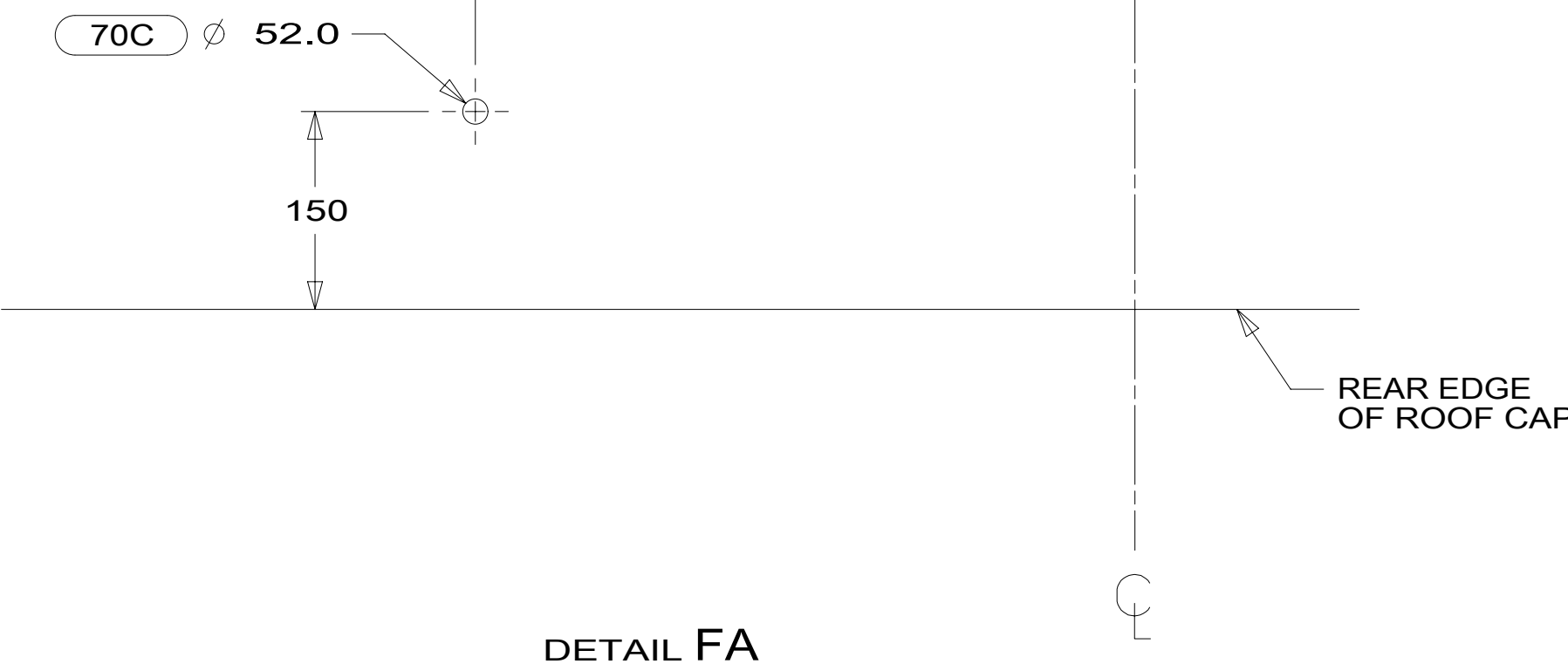
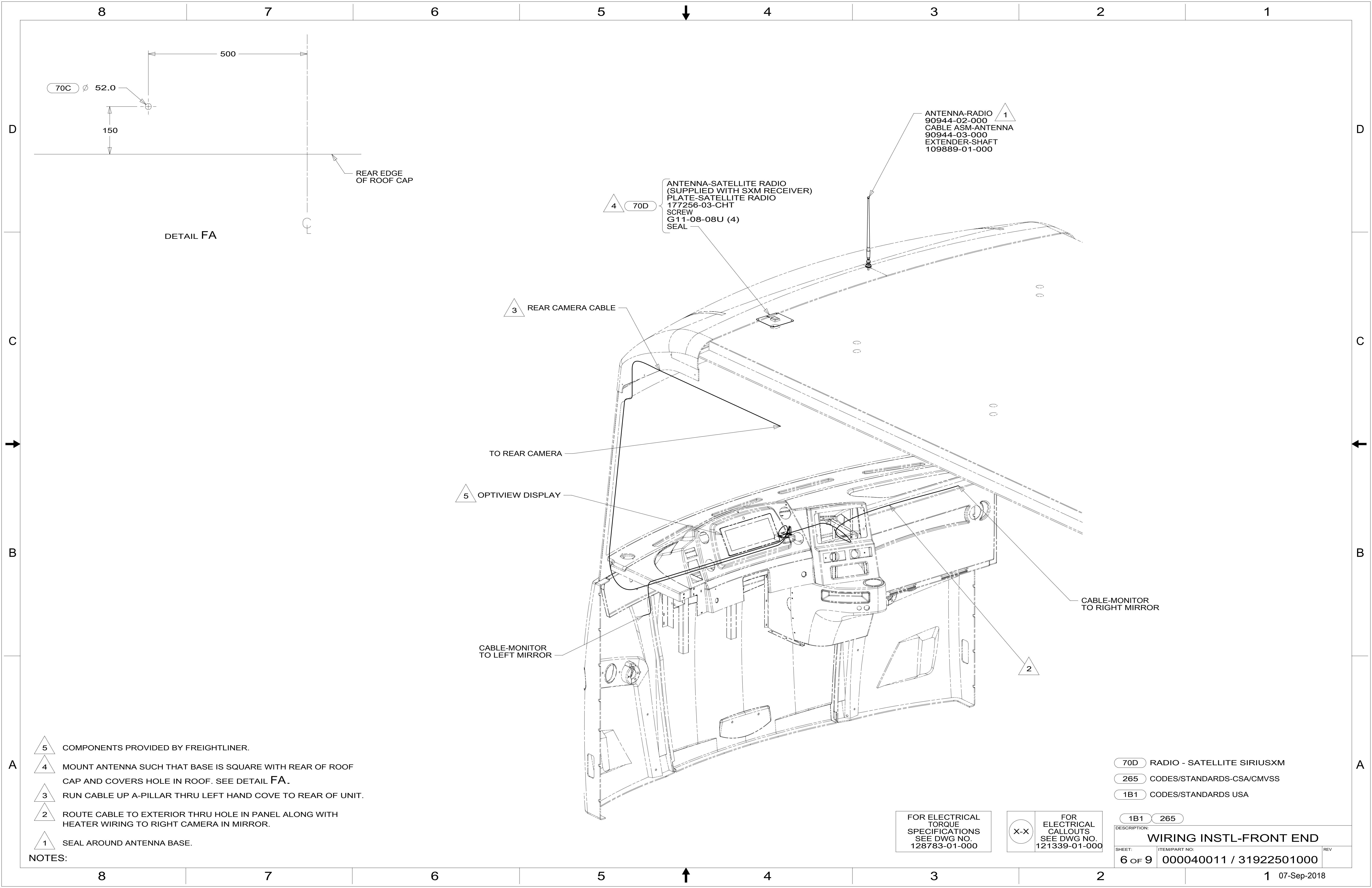
265 CODES/STANDARDS-CSA/CMVSS  
1B1 CODES/STANDARDS USA

1B1 265

DESCRIPTION:  
**WIRING INSTL-FRONT END**

SHEET: 5 OF 9 ITEM/PART NO: 000040011 / 31922501000 REV

8 7 6 5 4 3 2 1 07-Sep-2018



ANTENNA-RADIO  
 90944-02-000  
 CABLE ASM-ANTENNA  
 90944-03-000  
 EXTENDER-SHAFT  
 109889-01-000

ANTENNA-SATELLITE RADIO  
 (SUPPLIED WITH SXM RECEIVER)  
 PLATE-SATELLITE RADIO  
 177256-03-CHT  
 SCREW  
 G11-08-08U (4)  
 SEAL

REAR CAMERA CABLE

TO REAR CAMERA

OPTIVIEW DISPLAY

CABLE-MONITOR  
 TO LEFT MIRROR

CABLE-MONITOR  
 TO RIGHT MIRROR

- NOTES:
- 5 COMPONENTS PROVIDED BY FREIGHTLINER.
  - 4 MOUNT ANTENNA SUCH THAT BASE IS SQUARE WITH REAR OF ROOF CAP AND COVERS HOLE IN ROOF. SEE DETAIL FA.
  - 3 RUN CABLE UP A-PILLAR THRU LEFT HAND COVE TO REAR OF UNIT.
  - 2 ROUTE CABLE TO EXTERIOR THRU HOLE IN PANEL ALONG WITH HEATER WIRING TO RIGHT CAMERA IN MIRROR.
  - 1 SEAL AROUND ANTENNA BASE.

- 70D RADIO - SATELLITE SIRIUSXM
- 265 CODES/STANDARDS-CSA/CMVSS
- 1B1 CODES/STANDARDS USA

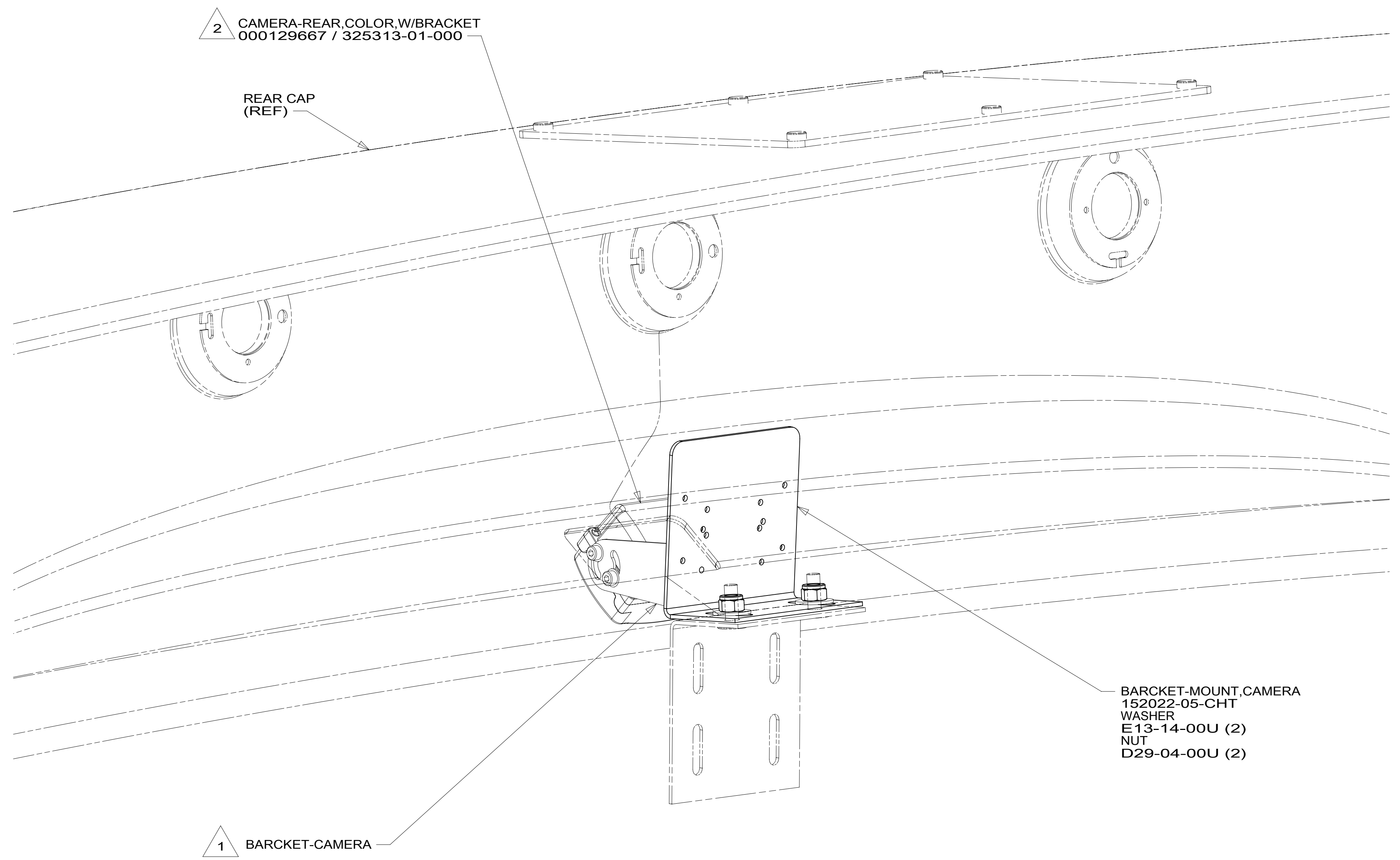
FOR ELECTRICAL  
 TORQUE  
 SPECIFICATIONS  
 SEE DWG NO.  
 128783-01-000

FOR ELECTRICAL  
 CALLOUTS  
 SEE DWG NO.  
 121339-01-000

DESCRIPTION:	
<b>WIRING INSTL-FRONT END</b>	
SHEET:	ITEM/PART NO. REV
6 OF 9	000040011 / 31922501000

8 7 6 5 4 3 2 1

D  
C  
B  
A



2 CAMERA-REAR,COLOR,W/BRACKET  
000129667 / 325313-01-000

REAR CAP  
(REF)

BRACKET-MOUNT,CAMERA  
152022-05-CHT  
WASHER  
E13-14-00U (2)  
NUT  
D29-04-00U (2)

1 BRACKET-CAMERA

2 ALIGN CAMERA IN CENTER OF SHROUD OPENING AND  
ADJUST SO BACKWALL IS JUST VISIBLE.

1 PARTS SUPPLIED WITH REAR CAMERA.

NOTES:

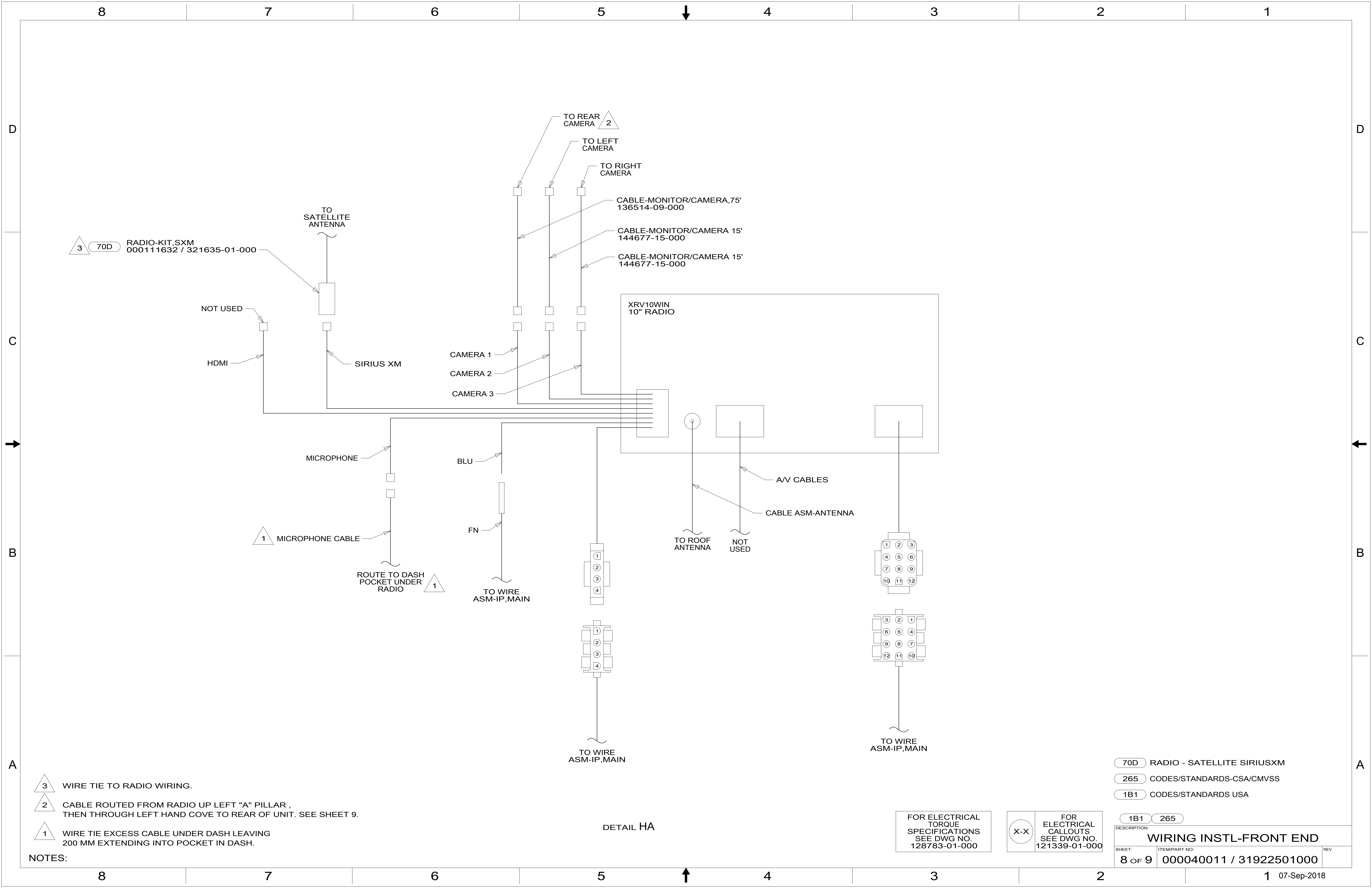
FOR ELECTRICAL  
TORQUE  
SPECIFICATIONS  
SEE DWG NO.  
128783-01-000

X-X  
FOR  
ELECTRICAL  
CALLOUTS  
SEE DWG NO.  
121339-01-000

265 CODES/STANDARDS-CSA/CMVSS  
1B1 CODES/STANDARDS USA

DESCRIPTION:		1B1 265
<b>WIRING INSTL-FRONT END</b>		
SHEET:	ITEM/PART NO:	REV
7 OF 9	000040011 / 31922501000	

8 7 6 5 4 3 2 1 07-Sep-2018



3 70D RADIO-KIT,SXM  
000111632 / 321635-01-000

NOT USED

HDMI

TO SATELLITE ANTENNA

SIRIUS XM

TO REAR CAMERA 2

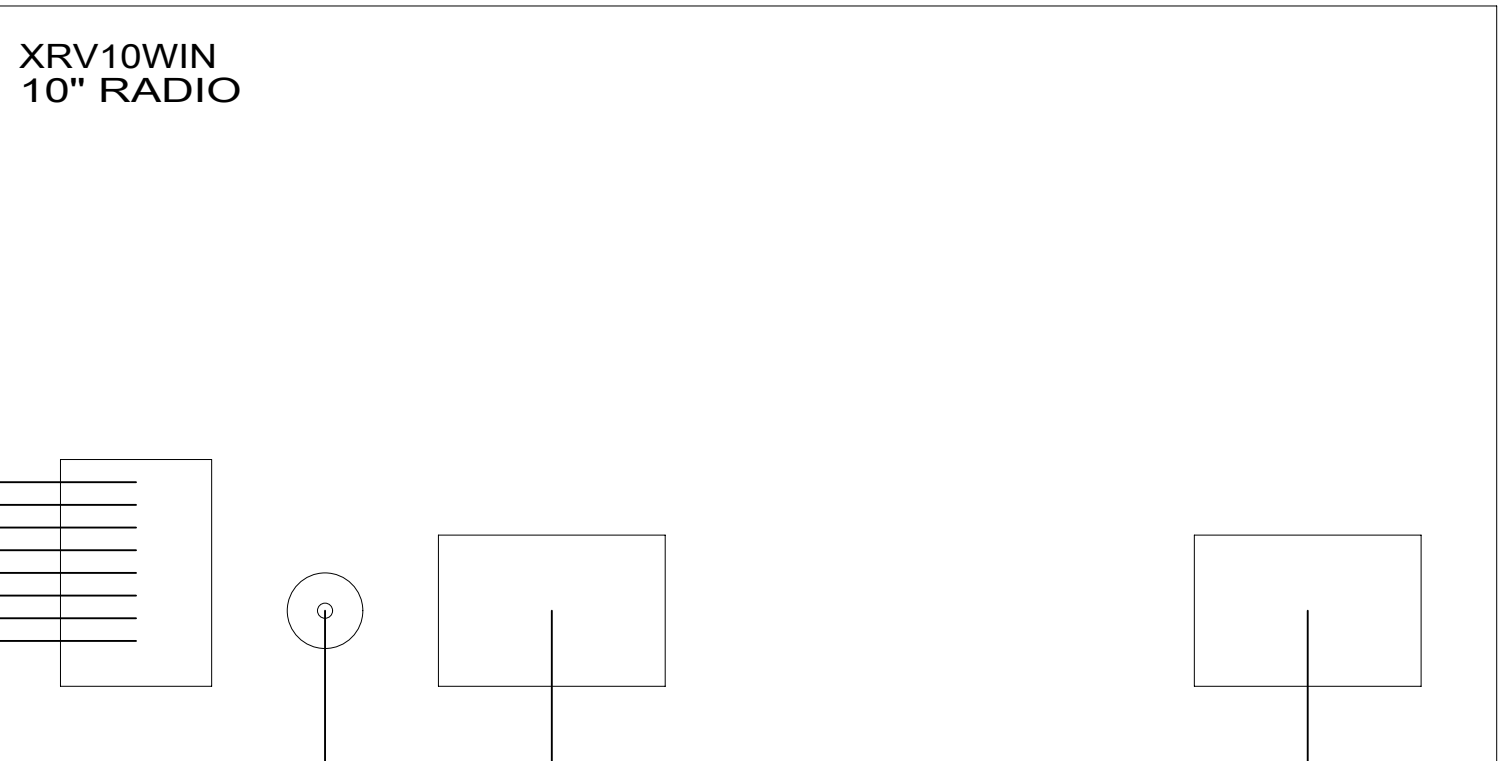
TO LEFT CAMERA

TO RIGHT CAMERA

CABLE-MONITOR/CAMERA,75'  
136514-09-000

CABLE-MONITOR/CAMERA 15'  
144677-15-000

CABLE-MONITOR/CAMERA 15'  
144677-15-000



CAMERA 1

CAMERA 2

CAMERA 3

MICROPHONE

BLU

A/V CABLES

CABLE ASM-ANTENNA

1 MICROPHONE CABLE

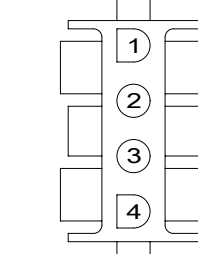
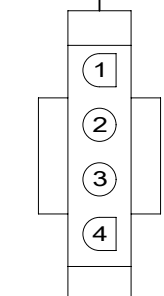
TO ROOF ANTENNA

NOT USED

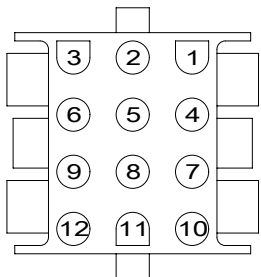
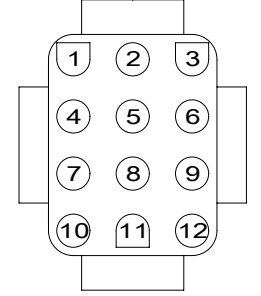
ROUTE TO DASH POCKET UNDER RADIO

FN

TO WIRE ASM-IP,MAIN



TO WIRE ASM-IP,MAIN



TO WIRE ASM-IP,MAIN

- NOTES:
- 3 WIRE TIE TO RADIO WIRING.
  - 2 CABLE ROUTED FROM RADIO UP LEFT "A" PILLAR , THEN THROUGH LEFT HAND COVE TO REAR OF UNIT. SEE SHEET 9.
  - 1 WIRE TIE EXCESS CABLE UNDER DASH LEAVING 200 MM EXTENDING INTO POCKET IN DASH.

DETAIL HA

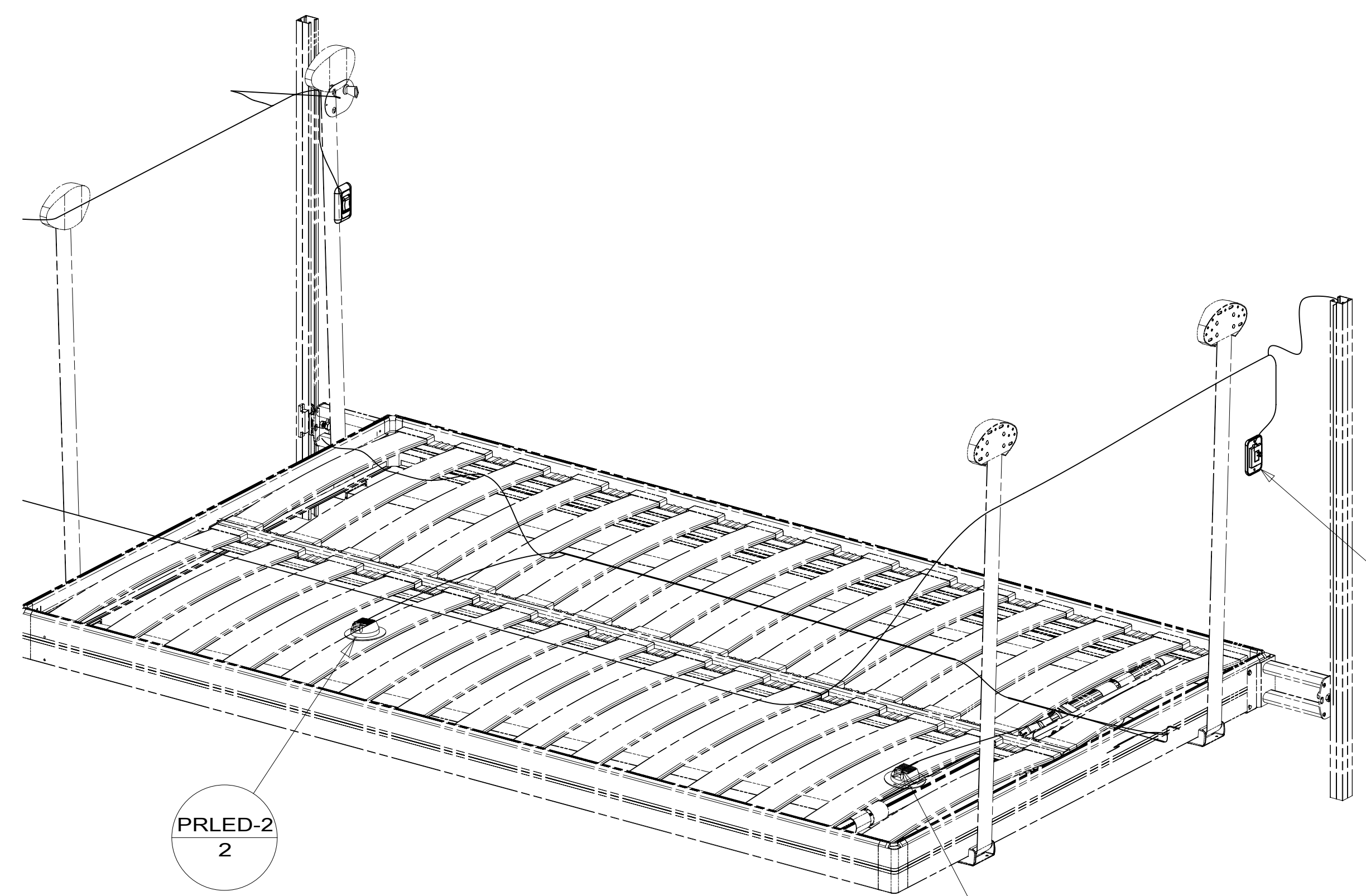
FOR ELECTRICAL TORQUE SPECIFICATIONS SEE DWG NO. 128783-01-000

FOR ELECTRICAL CALLOUTS SEE DWG NO. 121339-01-000

- 70D RADIO - SATELLITE SIRIUSXM
- 265 CODES/STANDARDS-CSA/CMVSS
- 1B1 CODES/STANDARDS USA

DESCRIPTION:		1B1 265	
<b>WIRING INSTL-FRONT END</b>			
SHEET:	ITEM/PART NO.:	REV	
8 OF 9	000040011 / 31922501000		



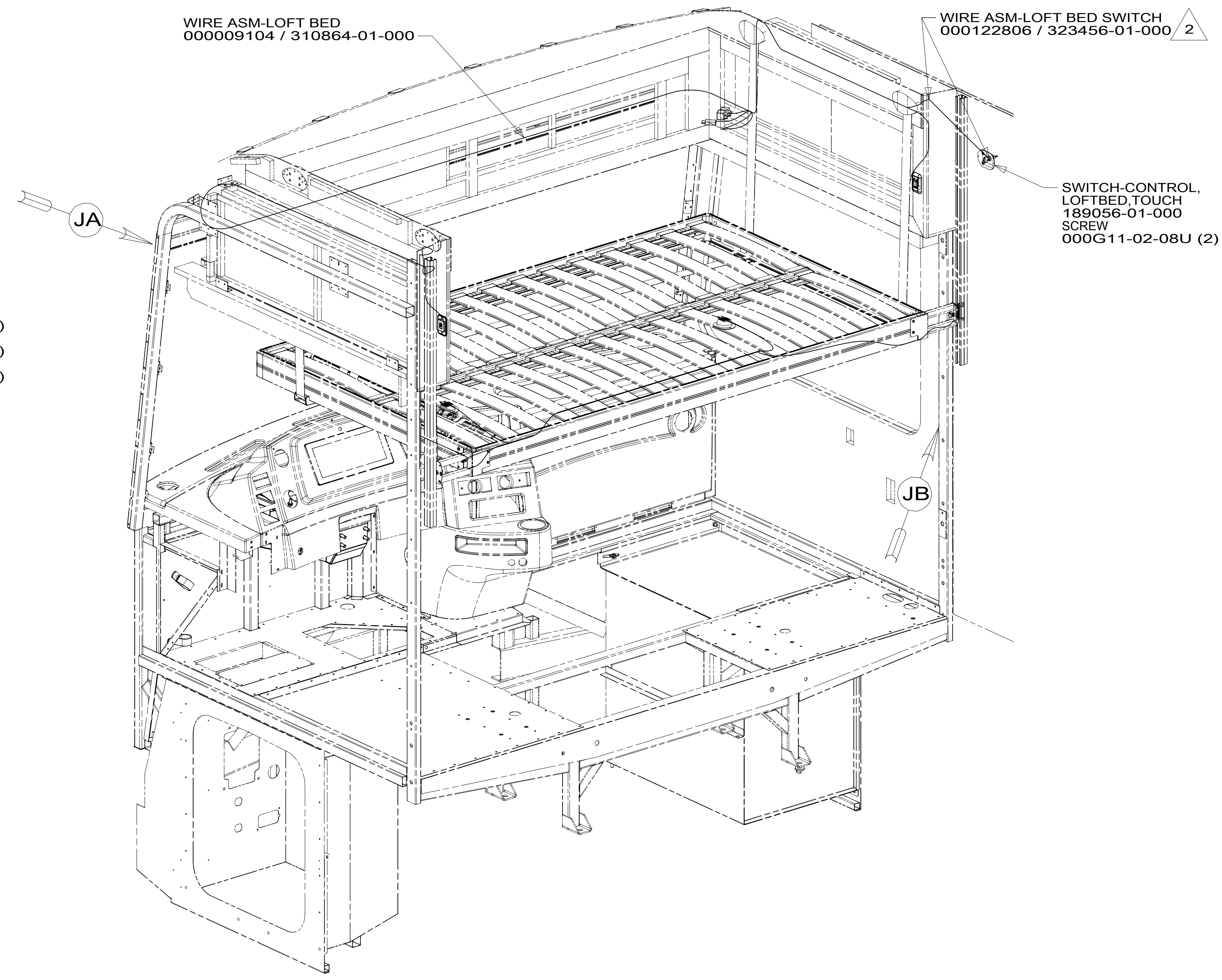


SWITCH-ROCKER  
135740-07-CHT (2)  
SWITCH-BASE  
135741-01-CHT (2)  
SWITCH-BEZEL  
135742-01-CHT (2)  
SCREW  
G11-08-08U (4)

DETAIL JA

TO WIRE ASM-BED LIFT

PRLED-2  
2



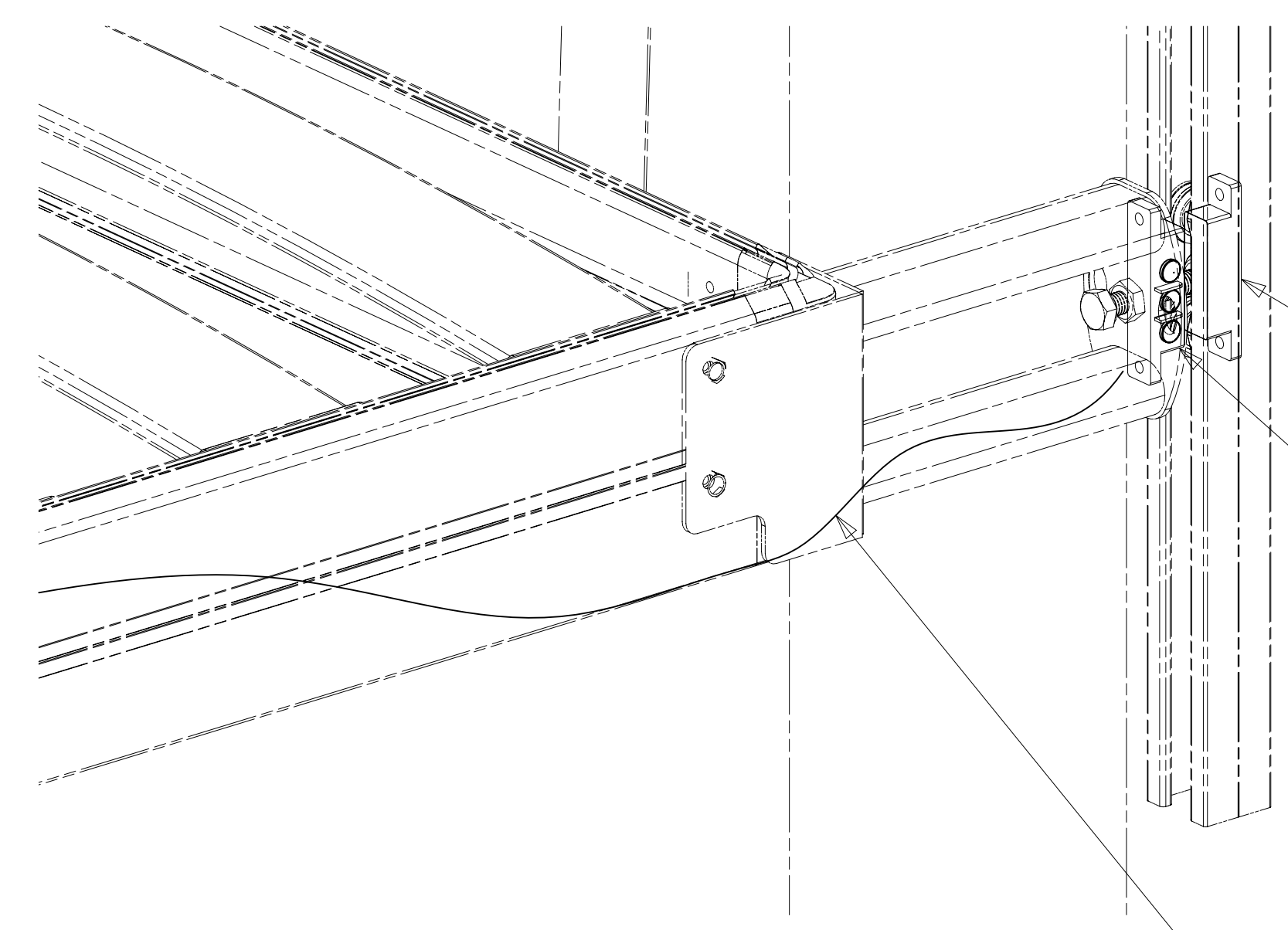
WIRE ASM-LOFT BED  
000009104 / 310864-01-000

WIRE ASM-LOFT BED SWITCH  
000122806 / 323456-01-000 2

SWITCH-CONTROL,  
LOFTBED, TOUCH  
189056-01-000  
SCREW  
000G11-02-08U (2)

JA

JB



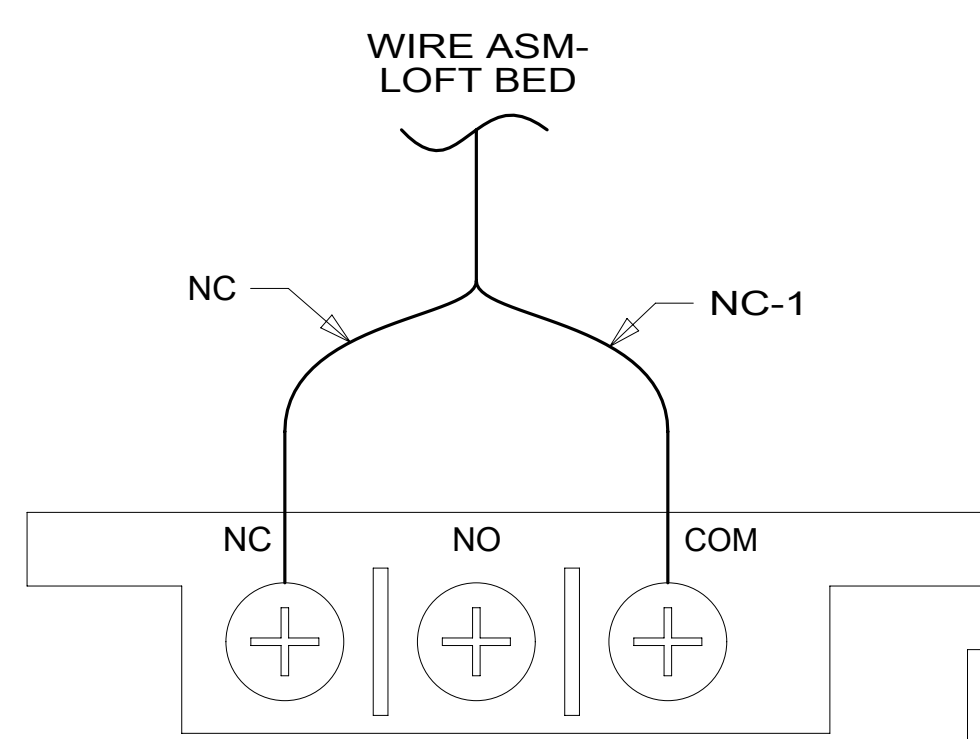
SCREW  
076790-08-000 (2)

SWITCH-MAGNET, SURFACE MOUNT  
187753-01-CHT  
SCREW  
G18-08-10U (2)  
NUT  
D65-08-00U (2)  
SCREW  
(SUPPLIED WITH SWITCH)  
BRACKET  
000005519 / 312324-01-CHT  
TIE-WIRE  
008343-01-000 (2)

1

WIRE ASM-LOFT BED EXTENSION  
000004364 / 312116-01-000

DETAIL JB  
(SWITCH COVER NOT SHOWN)



WIRE ASM-LOFT BED

NC NC-1

NC NO COM

DETAIL JC

2 WIRE ROUTED THROUGH ROUTED PATH IN SIDEWALL BETWEEN ARROWS.

1 ATTACH THE MAGNET WITH WIRE CONNECTIONS TO BRACKET SHOWN AND THEN ATTACH THE MAGNET WITHOUT WIRE CONNECTIONS SO IT IS DIRECTLY ACROSS FROM THE OTHER MAGNET WHEN BED IS IN THE DOWN POSITION.

SEE DETAIL JC FOR WIRING CONNECTIONS.

NOTES:

FOR ELECTRICAL TORQUE SPECIFICATIONS SEE DWG NO. 128783-01-000

X-X FOR ELECTRICAL CALLOUTS SEE DWG NO. 121339-01-000

- 45B LOFT BED
- 265 CODES/STANDARDS-CSA/CMVSS
- 1B1 CODES/STANDARDS USA

DESCRIPTION:	1B1 265 45B	
<b>WIRING INSTL-FRONT END</b>		
SHEET:	ITEM/PART NO:	REV
9 OF 9	000040011 / 31922501000	