

13. ATTACH SEAL TO BRACE WHERE IT CONTACTS HEATER PAD.

12. CUT PART TO 90MM.

11. PREP THE SURFACE PER MANUFACTURERS INSTRUCTIONS BEFORE APPLYING THE HEATING PAD.

10. SEE WIRING INSTL-BODY FOR ELECTRICAL CONNECTION.

9. SEE DRAWING 061607 FOR INSTALLATION OF GROMMETS.

8. SECURE DRAINAGE PIPES TO CABINET USING WIRE TIE 108046-02-000, AND SCREW 000G67-10-12U AT INTERVALS OF NOT MORE THAN 4 FEET APART.

7. SECURE VENT PIPE TO FLOOR WITH CLAMP 000156237 / 326663-02-000 (2), SCREW 000G67-10-12U (2), BRACKET 136878-01-CHT (2).

6. VENT PIPE MUST PROJECT 51 MIN AND 64 MAX ABOVE ROOF FOR PROPER FIT AND FUNCTION. ADD S-1 (000156099 / 326607-01-CHT SEAL-VENT PIPE) AROUND PIPE ON ROOF BEFORE VENT CAP IS INSTALLED.

5. SEAL AROUND SHOWER WITH SILICONE.

4. USE SMOOTH PLUMBERS PUTTY 167459-01-000 TO SEAL STRAINER (0.2 PER STRAINER).

3. ALL PIPE AND FITTINGS TO BE ASSEMBLED WITH SOLVENT 004020-01-000 (USA), 004020-02-000 (CAN)

2. SLOPE OF TRAP ARM MUST BE 6 PER 305 mm.

1. SLOPE OF HORIZONTAL PIPING TO BE MINIMUM OF 3 PER 305 mm.

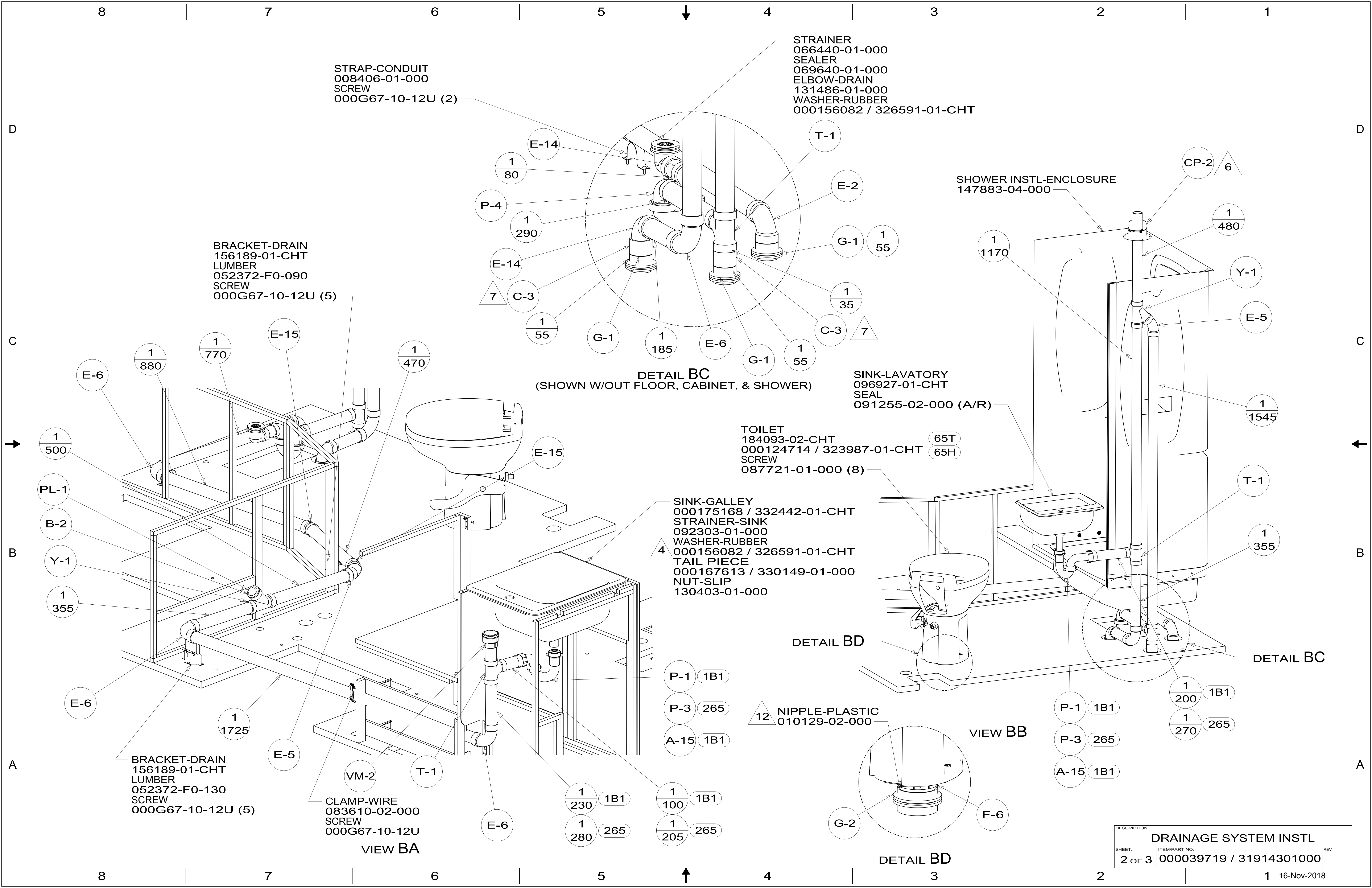
NOTES:

- 65T RENTAL-BEST TIME RV-WITH-OUT
- 65H RENTAL-BEST TIME RV
- 265 CODES/STANDARDS-CSA/CMVSS
- 23T DRAINAGE SYSTEM-HEATED
- 1B1 CODES/STANDARDS USA



DSNR:		ALL DIMENSIONS ARE IN MILLIMETERS	
DIFTR:		MATERIAL:	
UNSPECIFIED TOLERANCES:			
WHOLE DIM (X)	: 3		
ONE-PLACE (X.X)	: 1.5		
TWO-PLACE (X.XX)	: 0.50		
ANGLE	: 1°		
REFER TO ES0018 FOR FASTENER TIGHTENING GUIDELINES		WEIGHT: (LBS)	FIRST USED: (REF)
			18 322R
DESCRIPTION: DRAINAGE SYSTEM INSTL			
SHEET:	ITEM/PART NO.:	REV:	
1 OF 3	000039719 / 31914301000		

X-X
FOR DRAINAGE CALLOUTS SEE DWG NO. 000211962 / 303370-01-000



STRAP-CONDUIT
008406-01-000
SCREW
000G67-10-12U (2)

STRAINER
066440-01-000
SEALER
069640-01-000
ELBOW-DRAIN
131486-01-000
WASHER-RUBBER
000156082 / 326591-01-CHT

BRACKET-DRAIN
156189-01-CHT
LUMBER
052372-F0-090
SCREW
000G67-10-12U (5)

SHOWER INSTL-ENCLOSURE
147883-04-000

DETAIL BC
(SHOWN W/OUT FLOOR, CABINET, & SHOWER)

SINK-LAVATORY
096927-01-CHT
SEAL
091255-02-000 (A/R)

TOILET
184093-02-CHT
000124714 / 323987-01-CHT
SCREW
087721-01-000 (8)

SINK-GALLEY
000175168 / 332442-01-CHT
STRAINER-SINK
092303-01-000
WASHER-RUBBER
000156082 / 326591-01-CHT
TAIL PIECE
000167613 / 330149-01-000
NUT-SLIP
130403-01-000

BRACKET-DRAIN
156189-01-CHT
LUMBER
052372-F0-130
SCREW
000G67-10-12U (5)

CLAMP-WIRE
083610-02-000
SCREW
000G67-10-12U

VIEW BA

DETAIL BD

VIEW BB

DETAIL BD

DESCRIPTION: DRAINAGE SYSTEM INSTL		
SHEET: 2 OF 3	ITEM/PART NO: 000039719 / 31914301000	REV

